

**NOTIFICATION OF ENVIRONMENTAL IMPACT ASSESSMENT PROCESS AND PUBLIC PARTICIPATION PROCESS: PROPOSED KOMSBERG EAST AND WEST WIND ENERGY FACILITIES, WESTERN AND NORTHERN CAPE PROVINCES**

Notice is hereby given of a Public Participation Process to be undertaken in terms of the National Environmental Management Act, 1998 (Act No. 107 of 1998), as amended.

**DEA Reference Number:** To be allocated upon submission of application.

**Nature and Location of Activity:** Komsberg Wind Farms (Pty) Ltd intend to develop Komsberg East and Komsberg West Wind Energy Facilities and their associated grid connections, each of which would have a maximum generation capacity of 275MW. Each Wind Energy Facility would be located in the Western Cape Province, with a small portion also being located across the border of the Northern Cape Province, approximately 60km north of Laingsburg and 40km south east of Sutherland.

**Two applications for a Scoping and Environmental Impact Assessment process for each Wind Energy Facility will be submitted to the competent authority, the Department of Environmental Affairs (DEA), for a decision. A combined Public Participation Process will be undertaken for these processes and two Basic Assessment Processes will be initiated for the two proposed Grid Connections.**

**Listed Activities:** LN1 GN R983\_11(i); 12 (iii, x, xii); 19 (i); 24 (ii); 27; 48 (iii); 56 (i, ii). LN2 GN R984 1; 2; 15. LN3 GN R985 4 (a)(ii) &(f)(i); 10(g)(i); 12(a)(ii) & (d) (ii); 14 (a)(ii) & (f)(i); 18 (a)(ii) & (f)(i); 23(a)(ii) & (g)(i).

A **Draft Scoping Report** will be available for public review and comment from the 1<sup>st</sup> September 2015 to the 1<sup>st</sup> October 2015 at the following locations:

- Sutherland Public Library;
- Laingsburg Public Library; and
- Websites: [www.eims.co.za](http://www.eims.co.za) and [www.arcusconsulting.co.za](http://www.arcusconsulting.co.za).

Should you wish to be registered as an **Interested and Affected Party (I&AP)** and/or receive a copy of the **Background Information Document (BID)**, please respond to this notification by submitting your name, interest in the project, email address, postal address and telephone number as well as any comments in writing to the address below:

**Environmental Impact Management Services (Pty) Ltd**  
**Postal Address: P. O. Box 2083, Pinegowrie, 2123**  
**Telephone: 011 789 7170**  
**Fax: 011 787 3059**  
**Email: [komsberg@eims.co.za](mailto:komsberg@eims.co.za)**  
**Contact person: Ms Nobuhle Hughes**

**Correspondence throughout the remainder of the PPP and EIA Process will only be distributed to Registered I&APs. Registration is possible throughout the EIA Process.**

**KENNISGEWING VAN OMGEWINGSIMPAAKEVALUERINGSPROSES EN OPENBARE DEELNAMEPROSES: VOORGESTELDE KOMSBERG-OOS EN KOMSBERG WES WINDKRAGAAANLEG FASILITEITE, WES-KAAP EN NOORD-KAAP PROVINSIES.**

Kennis geskied in terme van die Wet op Nasionale Omgewingsbestuur, 1998 (Wet 107 van 1998) (NEMA) (soos gewysig), van 'n openbare deelnameproses.

**Nasionale Departement van Omgewingsake (DEA) verwysingsnommer:** Sal toegeken word met die voorlegging van aansoek.

**Aard en ligging van die projek:** Komsberg Wind Farms Edms.Bpk is van plan om die Komsberg-Oos en Komsberg Wes Windkragaanleg Fasiliteite (WEF) en hul verwante infrastruktuur te ontwikkel. Elkeen van die WEF sal 'n maksimum opwekkingskapasiteit van 275MW hê. Beide WEF sal binne die Wes-Kaap Provinsie geleë wees, met 'n klein gedeelte daarvan binne the grense van die Noord-Kaap Provinsie, ongeveer 60km noord van Laingsburg en 40km suidoos van Sutherland.

**Twee aparte aansoeke vir Bestekopname en Omgewingsinvloedbepaling proses vir elk een van die WEF sal ingedien word by die Nasionale Departement van Omgewingsake (DEA). 'n Gesamentlike openbare deelnameproses sal onderneem word vir hierdie prosesse en twee basiese assesseringsprosesse sal ook onderneem word vir die twee gepaardgaande netwerkkonneksie komponente.**

**NEMA gelyste aktiwiteite:** LN1 GN R983 11(i); 12 (iii, x, xii); 19 (i); 24 (ii); 27; 48 (iii); 56 (i, ii). LN2 GN R984 1; 2; 15. LN3 GN R985 4 (a)(ii) &(f)(i); 10(g)(i); 12(a)(ii) & (d) (ii); 14 (a)(ii) & (f)(i); 18 (a)(ii) & (f)(i); 23(a)(ii) & (g)(i).

'n Voorlopige bestekopname verslag sal vanaf 1 September 2015 tot en met 1 Oktober 2015 beskikbaar gestel word vir u kommentaar by die volgende openbare plekke:

- Sutherland Openbare Biblioteek;
- Laingsburg Openbare Biblioteek; en
- Webwerwe: [www.eims.co.za](http://www.eims.co.za) en [www.arcusconsulting.co.za](http://www.arcusconsulting.co.za)

Ten einde te verseker dat u geïdentifiseer en geregistreer word as 'n belangstellende of geaffekteerde party, en / of om 'n afskrif van die Agtergrondinligtingsdokument (AID) te ontvang, stuur asseblief u naam, kontakbesonderhede, rede vir u belangstelling en die kwessies/ besware, skriftelik of telefonies aan:

**Environmental Impact Management Services Edms. Bpk**  
**Posadres: Posbus 2083, Pinegowrie, 2123**  
**Telefoon: 011 789 7170**  
**Faks: 011 787 3059**  
**Epos: [komsberg@eims.co.za](mailto:komsberg@eims.co.za)**  
**Kontak: Nobuhle Hughes**

**Neem asseblief kennis dat slegs geregistreerde belanghebbende en geaffekteerde partye van verdere geleenthede vir betrokkenheid by hierdie proses in kennis gestel sal word.**



## BACKGROUND INFORMATION DOCUMENT

### 1. INTRODUCTION AND BACKGROUND

**Arcus Consulting Services (Pty) Ltd** has been appointed by **Komsberg Wind Farms (Pty) Ltd** to conduct the Environmental Impact Assessment (EIA) process as required by the National Environmental Management Act, 1998 (Act No. 107 of 1998) (NEMA), as amended, for the proposed establishment of two wind energy facilities (WEFs), Komsberg East and West and their associated grid connections.

The proposed grid connections will be subject to two further separate EIA processes (Basic Assessment).

The majority of the study area is located in the Western Cape Province and a smaller portion of the study area, is located on the border of the Northern Cape Province, approximately 60km north of Laingsburg and 40km south east of Sutherland. The proposed sites lie adjacent to each other in the Moordenaars Karoo.

The location of the Project is shown on the Location Plan (**Figure 1**) and covers a total area of approximately 26 832 hectares. The footprint of the proposed infrastructure would equate to less than one percent of the total area.

Most of the proposed site is located in the Laingsburg Local Municipal area, which forms part of the Central Karoo District Municipality in the Western Cape Province. A small portion of the site falls within the Northern Cape Province, within the Karoo Hoogland Local Municipality, which forms part of the Namakwa District Municipality.

The main access route to the proposed site is via the R354 and the Komsberg and Moordenaars Karoo District Roads, approaching the study area from the west.

Currently, there are three occupied homesteads located within the study area, two in the Komsberg East area and one in the Komsberg West area. The main land uses in the area are linked to livestock farming. The proposed site is made up of a number of farms, and are zoned for Agricultural Use.

The aim of the project is to generate electricity, which is likely to be sold through the Department of Energy's (DoE) Renewable Energy Independent Power Producer Procurement Programme (REIPPPP). The WEFs will deliver electricity into the existing Eskom electricity grid via a high voltage grid connection.

### 2. PURPOSE OF THIS DOCUMENT

The purpose of this Background Information Document (BID) is to:

- Provide Interested and Affected Parties (I&APs) with information regarding the proposed development;
- Provide I&APs with an opportunity to register as an I&AP;
- Provide an overview of the proposed activities and the legal framework in which the Project is executed;
- Describe the environmental process being undertaken; and
- Provide I&APs with the early opportunity to raise any environmental issues or concerns that they may have and allow I&APs collaborate in the authorisation process.

This BID is the first to be produced in a series of documents/reports for this application. Further documentation with detailed information will be made available for comment during the process.

### 3. PROJECT DESCRIPTION

The Project comprises two WEFs and their associated grid connections. Each WEF will have a maximum generation capacity of up to 275 megawatts (MW).

The Komsberg East and Komsberg West WEFs will consist of the following infrastructural components:

- Up to 55 wind turbines each of between 2 MW and up to 5MW in capacity with a rotor diameter of up to 140m and a hub height of up to 120m;

#### Arcus Renewable Energy Consulting

Office 220 Cube Workspace, Cnr Long Street and Hans Strijdom Road, Cape Town, 8001

T: +27 21 412 1529 E: [office@arcusconsulting.co.za](mailto:office@arcusconsulting.co.za) W: [www.arcusconsulting.co.za](http://www.arcusconsulting.co.za)

Registered in South Africa No. 2012/215000/10

- Foundations and hardstands associated with the wind turbines;
- Up to 8m wide internal access road to each turbine, the substation complex and the ancillary infrastructure, including underground cabling adjacent the roads. Road length would be up to approximately 40km in total;
- Medium voltage cabling between turbines and the substation, to be laid underground where practical;
- Overhead medium voltage cables between certain turbine strings or rows;
- A 100m x 150m on-site substation complex to facilitate stepping up the voltage from medium to high voltage (up to 400kV) to enable the connection of the wind farm to the national grid;
- A 35km (Komsberg West) and a 55km (Komsberg East) high voltage power line (132kV) from the on-site substation to the national grid at the Eskom Komsberg Main Transmission Substation;
- A 30m x 50m operations and services workshop area/office building for control, maintenance and storage; and
- Temporary infrastructure including a site camp, laydown areas and a batching plant totalling 150m x 100m in extent.

The exact location of each turbine, and the routing of the power lines have not yet been determined. This will be confirmed during the EIA phase of this process, aided through the investigations of environmental, technical and financial constraints.

#### 4. LEGAL REQUIREMENTS

On 4 December 2014, the Minister of Environmental Affairs promulgated new regulations in terms of Chapter 5 of the NEMA, viz, the EIA Regulations 2014 (Government Notices (GN) No. R. 982, R. 983, R. 984 and R. 985 in Government Gazette No. 38282 of 4 December 2014). These regulations came into effect on 8 December 2014.

The EIA Regulations 2014 published in Government Notice (GN) No. R982, provide for the control of certain Listed Activities. These activities are listed in GN No. R983 (Listing Notice 1 – Basic Assessment), R984 (Listing Notice 2 – Scoping & EIA Process) and R985 (Listing Notice 3 – Basic Assessment) of 4 December, and are prohibited until environmental authorisation

has been obtained from the competent authority, in this case, the Department of Environmental Affairs (DEA).

The Western Cape Department of Environmental Affairs and Development Planning (DEA&DP) as well as the Northern Cape Department of Environment and Nature Conservation (DENC) will be Commenting Authorities, amongst others.

The Listed Activities applicable to this proposed project are presented in **Table 1** below. All potential impacts associated with these Listed Activities will be considered and assessed in this EIA.

As this proposal triggers Listed Activities in Listing Notices 1 – 3, a full Scoping and EIA process is to be followed for this application.

**Table 1: Applicable Listed Activities in terms of the NEMA.**

LISTING NOTICE	ACTIVITIES
LN1 GN R983	11(i); 12 (iii, x, xii); 19 (i); 24 (ii); 27; 48 (iii); 56 (i, ii).
LN2 GN R984	1; 2; 15.
LN3 GN R985	4 (a)(ii) & (f)(i); 10(g)(i); 12(a)(ii) & (d)(ii); 14 (a)(ii) & (f)(i); 18 (a)(ii) & (f)(i); 23(a)(ii) & (g)(i).

Depending on the final design of the WEFs there may be a requirement for the following additional permits/ authorisations:

- Waste Management License/s as required by the NEMA;
- Mining Permits as required by the Minerals and Petroleum Resources Development Act, 2002 (MPRDA) (Act No. 28 of 2002)(MPRDA); and
- Water Use Licenses as required by the National Water Act, 1998 (Act No. 36 of 1998) (NWA).

#### 5. EIA PROCESS

An EIA process is a planning and decision making tool used to describe and assess the physical, biological, social, and economic impacts that a proposed development may have. In order to inform the decision-making process, it is important that public comments are timeously collated.

The EIA process allows for the environmental consequences of a proposed project to be

#### Arcus Renewable Energy Consulting

Office 220 Cube Workspace, Cnr Long Street and Hans Strijdom Road, Cape Town, 8001

T: +27 21 412 1529 E: [office@arcusconsulting.co.za](mailto:office@arcusconsulting.co.za) W: [www.arcusconsulting.co.za](http://www.arcusconsulting.co.za)

Registered in South Africa No. 2012/215000/10

identified up-front, investigated through an impact assessment process, and taken into consideration through the design of the development.

An independent Environmental Assessment Practitioner (EAP) and specific specialists identify potential negative and positive impacts that could arise as a result of the proposed project and mitigation measures are recommended which would allow for the avoidance or reduction of negative impacts or which may enhance positive impacts.

Arcus has appointed Environmental Impact Management Services (Pty) Ltd (EIMS) to undertake the Public Participation Process (PPP) component for this EIA process.

The key phases that shall be part of this EIA process are described below:

- **Initial Notification and Call to Register** as I&APs through the following: Advertisements, site notices, posters, letters to landowners and pre-identified I&APs. The aim of this step is to inform people of the proposed activity and to encourage initial comment and feedback.
- **Scoping Phase:** Collation of initial comments and specialist investigations into a concise report (Scoping Report) which provides feedback on the following:
  - Nature of the activity;
  - Description of the receiving environment;
  - Identification of potential feasible alternatives;
  - Identification of potential positive and negative impacts;
  - Identification of knowledge gaps; and
  - A Plan of Study for the EIA phase.
- **EIA Phase:** Investigate and comparatively assess the identified alternatives to determine a preferred alternative. The identified impacts will be assessed and relevant management and mitigation measures listed for inclusion in an Environmental Management Programme (EMPr). The findings are included in an EIA Report.
- **Ongoing Public Consultation:** Throughout the process, registered I&APs will be consulted. This involvement may be through dissemination of information by means of a public event/meeting, opportunities to review and comment on draft reports (Scoping & EIA), and project updates.

Once the relevant processes have been completed and the documentation submitted to the competent authority (DEA), the DEA will review the application and issue a decision (called an Environmental Authorisation). I&APs will be informed of the decision and their rights to appeal.

Four applications will be submitted for the proposed project:

<b>Scoping and EIA Process:</b> <ol style="list-style-type: none"><li>1. Komsberg East Wind Energy Facility, Western Cape Province; and</li><li>2. Komsberg West Wind Energy Facility, Western and Northern Cape Provinces.</li></ol>
<b>Basic Assessment Process:</b> <ol style="list-style-type: none"><li>3. Komsberg East Grid Connection, Western and Northern Cape Provinces; and</li><li>4. Komsberg West Grid Connection, Western and Northern Cape Provinces.</li></ol>

A combined PPP will be conducted for all four applications.

Each application would be subject to a separate application for Environmental Authorisation to the DEA. Should authorisations for the grid connection infrastructure be granted, this will be entirely or partially transferred from the applicant to Eskom Holdings SOC Limited (Eskom) as applicable or if necessary.

## **6. PRELIMINARY ENVIRONMENTAL IMPACTS**

The EIA process will consider the potential impacts of the proposed project through its construction and operation. These impacts will be assessed by the EAP and a team of independent specialists. To date the need for specialist studies has been identified and the specialists appointed as described below. Further potential impacts may be identified during the scoping stage and added to this list.

The following specialist's investigations are being completed:

- Avifauna monitoring;
- Bat monitoring;
- Soils and Agricultural Potential;
- Noise;
- Freshwater Ecology;
- Social;
- Visual;
- Flora and Fauna
- Heritage, Archaeology; and Paleontology.

### **Arcus Renewable Energy Consulting**

Office 220 Cube Workspace, Cnr Long Street and Hans Strijdom Road, Cape Town, 8001

T: +27 21 412 1529 E: [office@arcusconsulting.co.za](mailto:office@arcusconsulting.co.za) W: [www.arcusconsulting.co.za](http://www.arcusconsulting.co.za)

Registered in South Africa No. 2012/215000/10



## 7. HOW TO GET INVOLVED

events to be undertaken during EIA Process.

I&APs are invited to be a part of the public participation process from the start of the EIA process. Issues and comments raised will focus the EIA process and enhance the quality of the decision taken by the authorities.

As an I&AP you need to **ensure that you are registered** for the project and that you forward your comments within the stipulated timeframes to EIMS, contact details below.

You can become involved by:

- Registering your name and contact details through e-mail, fax, or letter;
- Submitting the Registration Form (attached to this document) and mailing or faxing it to the contact person provided;
- Attending the public events/meetings as applicable. As a registered I&AP, you will automatically be invited to these events;
- Reviewing and commenting on the draft Scoping and EIA Reports within the allowed review timeframes; and
- Contacting us with your comments, queries, suggestions, or requests for further project information.

In order to ensure your involvement in this EIA process, please register with EIMS by submitting your contact information (name, contact details, interest in the project) to:

**Environmental Impact Management Services (Pty) Ltd**

**Postal Address: P. O. Box 2083,  
Pinegowrie, 2123**

**Telephone: 011 789 7170**

**Fax: 011 787 3059**

**Email: [komsberg@eims.co.za](mailto:komsberg@eims.co.za)**

**Contact Person: Ms Nobuhle Hughes**

**A Draft Scoping Report** will be available for public review and comment from the **1<sup>st</sup> September 2015 to the 1st October 2015** at the following locations:

- Sutherland Public Library;
- Laingsburg Public Library;
- [www.eims.co.za](http://www.eims.co.za); and
- [www.arcusconsulting.co.za](http://www.arcusconsulting.co.za).

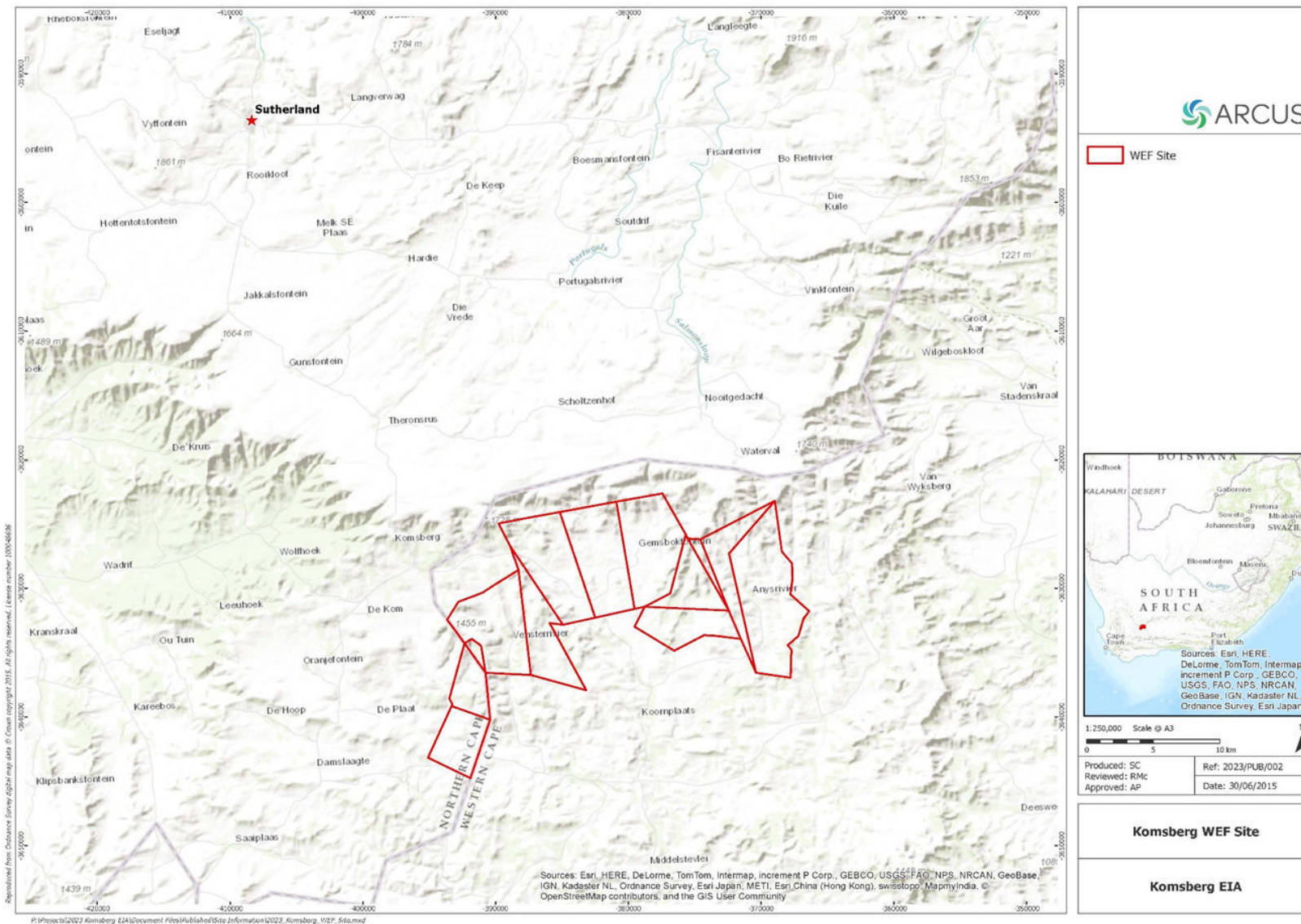
**Registered I&APs** will be notified of public

**Arcus Renewable Energy Consulting**

Office 220 Cube Workspace, Cnr Long Street and Hans Strijdom Road, Cape Town, 8001

**T:** +27 21 412 1529 **E:** [office@arcusconsulting.co.za](mailto:office@arcusconsulting.co.za) **W:** [www.arcusconsulting.co.za](http://www.arcusconsulting.co.za)

Registered in South Africa No. 2012/215000/10



**Figure 1: Locality Plan showing the location of the proposed Komsberg East WEF and Komsberg West WEF.**

## AGTERGRONDINLICHTINGS-DOKUMENT

### 1. INLEIDING EN AGTERGROND

**Arcus Consulting Services (Pty) Ltd** is aangestel deur **Komsberg Wind Farms (Pty) Ltd** om die omgewingsimpakassessering- (OIA) proses uit te voer soos vereis deur die Wet op Nasionale Omgewingsbestuur, 1998 (Wet No. 107 van 1998) (NEMA), soos gewysig, vir die voorgestelde oprigting van twee windkragfasiliteite (WKF's), Komsberg-Oos en -Wes en hulle gepaardgaande netwerkverbindings.

Die voorgestelde netwerkverbindings sal onderhewig wees aan twee verdere afsonderlike basiese assesseringsprosedures.

Die meeste van die studiegebied is in die Wes-Kaap geleë en 'n klein gedeelte van die studiegebied is op die grens van die Noord-Kaap geleë, ongeveer 60 km noord van Laingsburg en 40 km suidoos van Sutherland. Die voorgestelde terreine lê langs mekaar in die Moordenaarskaroo.

Die ligging van die projek word getoon op die liggingsplan (**Figuur 1**) en dek 'n totale gebied van ongeveer 26 832 hektaar. Die voetspoor van die voorgestelde infrastruktuur sal gelyk wees aan minder as een persent van die totale gebied.

Die meeste van die voorgestelde terrein is in die Laingsburg plaaslike munisipale gebied geleë, wat deel vorm van die Sentraal-Karoo-Distrikmunisipaliteit in die Wes-Kaap. 'n Klein deel van die terrein val in die Noord-Kaap, in die Karoo Hoogland plaaslike munisipaliteit, wat 'n deel van die Namakwa-Distrikmunisipaliteit vorm.

Die vernaamste toegangsroete tot die voorgestelde terrein is via die R354 en die Komsberg- en Moodenaarskaroo-streekpad wat die studiegebied vanuit die weste benader.

Daar is tans drie bewoonde opstalle in die studiegebied, twee in die Komsberg-Oos-gebied en een in die Komsberg-Wes-gebied. Die vernaamste grondgebruik in die gebied word gekoppel aan veeboerdery. Die voorgestelde terrein bestaan uit 'n aantal plase

en is gesoneer vir Landbougebruik.

Die oogmerk van die projek is om elektrisiteit op te wek, wat waarskynlik deur die Departement van Energie (DoE) se bodprogram vir hernieubare energie onafhanklike kragprodusente (REIPPPP) verkoop sal word. Die WKF's sal elektrisiteit aan die bestaande Eskom-elektrisiteitsnetwerk lewer via 'n hoëspanningnetwerkverbinding.

### 2. DOEL VAN HIERDIE DOKUMENT

Die doel van hierdie Agtergrondinligtingsdokument (AID) is om:

- Belanghebbende en geaffekteerde partye (B&GP's) van inligting oor die voorgestelde ontwikkeling te voorsien;
- B&GP's die geleentheid te gee om as sodanig geregistreer te word;
- 'n Oorsig te voorsien van die voorgestelde aktiwiteite en die regsraamwerk waarin die projek uitgevoer word;
- Die omgewingsproses wat onderneem word, te beskryf; en
- B&GP's 'n vroeë geleentheid te gee om enige omgewingskwessies of -kwellinge wat hulle het, te opper en om B&GP's toe te laat om met die toestemmingsproses saam te werk.

Hierdie AID is die eerste in 'n reeks dokumente/verslae wat vir hierdie aansoek geproduseer sal word. Verdere dokumentasie met volledige inligting sal gedurende die proses vir kommentaar beskikbaar gestel word.

### 3. BESKRYWING VAN PROJEK

Die projek bestaan uit twee WKF's en hulle gepaardgaande netwerkverbindings. Elke WKF sal 'n maksimum opwekkapasiteit van tot 275 megawatt (MW) hê.

Die Komsberg-Oos- en Komsberg-Wes-WKF sal uit die volgende infrastruktuurkomponente bestaan:

- Tot 55 windturbines waarvan elk 'n vermoë van tussen 2 MW en tot 5 MW



sal hê met 'n draaivlerkdeursnee van tot 140 m en 'n middelpunthoogte van tot 120 m;

- Fondamente en vaste blaaië wat gepaardgaan met die windturbines;
- Tot 8 m breë interne toegangspad na elke turbine, die substasiekompleks en die hulpinfrastruktuur, insluitende ondergrondse kables langs die paaie. Padlengte sal altesaam ongeveer 40 km wees;
- Mediumspanningkabel tussen turbines en die substasie, ondergronds gelê waar prakties;
- Oorhoofse mediumspanningkabel tussen sekere turbinelyne of -rye;
- 'n 100 m x 150 m perseelsubstasiekompleks om die spanning van medium na hoë spanning (tot 400 kV) te verhoog om die verbinding van die windplaas na die nasionale netwerk te bewerkstellig;
- 'n Hoëspanningkraglyn (132 kV) van 35 km (Komsberg-Wes) en 55 km (Komsberg-Oos) van die perseelsubstasie na die nasionale netwerk by die Eskom Komsberg-hooftransmissiesubstasie;
- 'n 30 m x 50 m operasionele en dienstewerkswinkelgebied/kantoorgebied vir beheer, instandhouding en berging; en
- Tydelike infrastruktuur, insluitende 'n perseelkamp, bergingsgebiede en 'n mengaanleg van altesaam 150 m x 100 m.

Die presiese posisie van elke turbine en die roete van die kraglyne is nog nie vasgestel nie. Dit sal bevestig word gedurende die OIA-fase van hierdie proses, met die hulp van die ondersoek van die omgewings-, tegniese en finansiële beperkinge.

#### 4. WETLIKE VEREISTES

Op 4 Desember 2014 het die Minister van Omgewingsake nuwe regulasies uitgevaardig ingevolge Hoofstuk 5 van die NEMA, nl. die OIA-regulasies 2014 (Goewermentskennisgewing (GK) No. R. 982, R. 983 en R. 984 en R. 985 in die Staatskoerant No. 38282 van 4 Desember 2014). Hierdie regulasies het op 8 Desember 2014 in werking getree.

Die OIA-regulasies 2014 wat in Goewermentskennisgewing (GK) No. R982 gepubliseer is, maak voorsiening vir die beheer van sekere gelyste aktiwiteite. Hierdie

aktiwiteite word aangegee in GK No. R983 (Lyskennisgewing 1 – Basiese assessering), R984 (Lyskennisgewing 2 – Omvangsbepaling- & OIA-proses) en R985 (Lyskennisgewing 3 – Basiese assessering) van 4 Desember en word verbied totdat omgewingsmagtigings verkry is van die bevoegde owerheid, in hierdie geval die Departement van Omgewingsake (DEA).

Die Wes-Kaapse Departement van Omgewingsake en Ontwikkelingsbeplanning (DEA&DP) sowel as die Noord-Kaapse Departement van die Omgewing en Natuurbewaring (DENC) sal kommentaarowerhede wees, onder andere.

Die gelyste aktiwiteite wat op hierdie voorgestelde projek van toepassing is, word in **Tabel 1** hieronder uiteengesit. Alle potensiële impakte wat met hierdie gelyste aktiwiteite verband hou, sal in hierdie OIA oorweeg en geassesseer word.

Aangesien hierdie voorlegging aanleiding gee tot gelyste aktiwiteite in Lyskennisgewings 1 – 3, sal 'n volle omvangsbepaling- en OIA-proses vir hierdie aansoek gevolg word.

**Tabel 1: Toepaslike gelyste aktiwiteite ingevolge die NEMA.**

LYSKENNISGEWING	AKTIWITEITE
LN1 GN R983	11(i); 12 (iii, x, xii); 19 (i); 24 (ii); 27; 48 (iii); 56 (i, ii).
LN2 GN R984	1; 2; 15.
LN3 GN R985	4 (a)(ii) & (f)(i); 10(g)(i); 12(a)(ii) & (d)(ii); 14 (a)(ii) & (f)(i); 18 (a)(ii) & (f)(i); 23(a)(ii) & (g)(i).

Na gelang van die finale ontwerp van die WKF's kan die volgende bykomende permitte/magtigings vereis word:

- Afvalbestuurlisensie(s) soos vereis deur die NEMA;
- Mynboupermitte soos vereis deur die Wet op Minerale en Petroleumhulpbronontwikkeling, 2002 (MPRDA) (Wet No. 28 van 2002) (MPRDA); en
- Watergebruiklisensies soos vereis deur die Nasionale Waterwet, 1998 (Wet No. 36 van 1998) (NWA).

#### 5. OIA-PROSES

### Arcus Renewable Energy Consulting

Office 220 Cube Workspace, Cnr Long Street and Hans Strijdom Road, Cape Town, 8001

T: +27 21 412 1529 E: [office@arcusconsulting.co.za](mailto:office@arcusconsulting.co.za) W: [www.arcusconsulting.co.za](http://www.arcusconsulting.co.za)

Registered in South Africa No. 2012/215000/10

'n OIA-proses is 'n beplanning- en besluitnemingsinstrument wat gebruik word om die fisiese, biologiese, maatskaplike en ekonomiese impakte wat 'n voorgestelde ontwikkeling kan hê, te beskryf en assessee. Om die besluitnemingsproses te beïnvloed, is dit belangrik dat openbare kommentaar betyds saamgestel word.

Die OIA-proses maak daarvoor voorsiening dat die omgewingsgevolge van 'n voorgestelde projek vooraf geïdentifiseer kan word, deur 'n impakassesseringsproses ondersoek word en tydens die ontwerp van die ontwikkeling in ag geneem word.

'n Onafhanklike omgewingassesseringspraktisyn (OAP) en spesifieke spesialiste identifiseer potensiële negatiewe en positiewe impakte wat as gevolg van die voorgestelde projek kan ontstaan, en versagtingsmaatreëls word voorgestel wat voorsiening sal maak vir die vermyding of vermindering van negatiewe impakte of die verbetering van positiewe impakte.

Arcus het Environmental Impact Management Services (Pty) Ltd (EIMS) aangestel om die openbare deelnemingsproses- (ODP) komponent van hierdie OIA-proses te onderneem.

Die sleutelfases wat deel van hierdie OIA-proses sal uitmaak, word hieronder beskryf:

- **Aanvanklike kennisgewing en oproep om te registreer** as B&GP's deur middel van die volgende: Advertensies, terreinkennisgewings, plakkaat, briewe aan grondeienaars en vooraf geïdentifiseerde B&GP's. Die doel van hierdie stap is om mense in kennis te stel van die voorgestelde aktiwiteit en om aanvanklike kommentaar en terugvoering te kry.
- **Omvangbepalingsfase:** Saamstelling van aanvanklike kommentaar en spesialisondersoeke in 'n bondige verslag (omvangbepalingsverslag) wat terugvoer gee oor die volgende:
  - Aard van die aktiwiteit;
  - Beskrywing van die ontvangeromgewing;
  - Identifisering van potensiële praktiese alternatiewe;
  - Identifisering van potensiële negatiewe en positiewe impakte;
  - Identifisering van kennisgapings; en
  - 'n Studieplan vir die OIA-fase.
- **OIA-fase:** Ondersoek en doen 'n

vergelijkende assessering van die geïdentifiseerde alternatiewe om die verkieslike alternatief te bepaal. Die geïdentifiseerde impakte sal geassesseer word en toepaslike bestuurs- en versagtingsmaatreëls sal gelys word vir insluiting in 'n omgewingsbestuurprogram (EMPR). Die bevindinge word in 'n OIA-verslag ingesluit.

- **Voortdurende openbare konsultasie:** Geregistreeerde B&GP's sal deur die hele proses geraadpleeg word. Hierdie betrokkenheid kan wees deur verspreiding van inligting deur middel van 'n openbare geleentheid/vergadering, geleentheids om konsepverslae (omvangbepaling & OIA) te ondersoek en daarop kommentaar te lewer asook projeknuus.

Wanneer die toepaslike prosesse afgehandel is en die dokumentasie by die bevoegde owerheid (DEA) ingedien is, sal die DEA die aansoek ondersoek en 'n besluit uitreik (wat 'n omgewingsmagtiging genoem word). B&GP's sal van die besluit asook hulle reg tot appèl in kennis gestel word.

Vier aansoeke sal vir die voorgestelde projek ingedien word:

<b>Omvangbepaling- en OIA-proses:</b> <ol style="list-style-type: none"><li>1. Komsberg-Oos-windkragfasiliteit, Wes-Kaap; en</li><li>2. Komsberg-Wes-windkragfasiliteit, Wes-en Noord-Kaap.</li></ol>
<b>Basiese assesseringsproses:</b> <ol style="list-style-type: none"><li>3. Komsberg-Oos-netwerkverbinding, Wes-en Noord Kaap; en</li><li>4. Komsberg-Wes-netwerkverbinding, Wes-en Noord Kaap,</li></ol>

'n Gesamentlike ODP sal vir al vier aansoeke uitgevoer word.

Elke aansoek sal onderhewig wees aan 'n afsonderlike aansoek om omgewingsmagtiging by die DEA. Indien magtigings vir die netwerkverbindinginfrastruktuur toegestaan word, sal dit heeltemal of gedeeltelik oorgedra word van die aansoeker na Eskom Holdings SOC Limited (Eskom) soos toepaslik of indien nodig.

## 6. VOORLOPIGE OMGEWINGSIMPAKTE

Die OIA-proses sal die potensiële impakte van die voorgestelde projek deur sy konstruksie en werking in aanmerking neem. Hierdie impakte sal deur die OAP en 'n span onafhanklike spesialiste geassesseer word. Tot op hede is

### Arcus Renewable Energy Consulting

Office 220 Cube Workspace, Cnr Long Street and Hans Strijdom Road, Cape Town, 8001

T: +27 21 412 1529 E: [office@arcusconsulting.co.za](mailto:office@arcusconsulting.co.za) W: [www.arcusconsulting.co.za](http://www.arcusconsulting.co.za)

Registered in South Africa No. 2012/215000/10

die nodigheid vir spesialistestudies geïdentifiseer, en die spesialiste hieronder is aangestel. Verdere potensiele impakte kan gedurende die omvangbepalingstadium geïdentifiseer en by hierdie lys gevoeg word.

Die volgende spesialiste-ondersoeke word afgehandel:

- Voëlmonitering;
- Vlermuismonitering;
- Grond- & landboupotensiaal;
- Geraas;
- Varswaterekologie;
- Maatskaplik;
- Visueel;
- Flora en fauna; en
- Erfenis, argeologie en paleontologie

## 7. HOE OM BETROKKE TE RAAK

B&GP's word genooi om vanaf die begin van die OIA-proses 'n deel van die openbare deelnemingsproses te wees. Kwessies en kommentaar wat geopper word, sal die OIA-proses fokus en die gehalte van die besluit wat deur die owerheid geneem word, verbeter.

As 'n B&GP moet u **verseker dat u geregistreer is** vir die projek en dat u kommentaar binne die bepaalde tydraamwerke na EIMS, kontakbesonderhede hieronder, aanstuur.

U kan betrokke raak deur:

- U naam en kontakbesonderhede deur e-pos, faks of brief te registreer;
- Die registrasievorm (aan hierdie dokument geheg) in te dien en dit aan die kontakpersoon te pos of te faks;
- Die openbare geleenthede/vergaderinge soos toepaslik by te woon. As 'n geregistreerde B&GP sal u outomaties na hierdie geleenthede genooi word;
- Die konsepomvangbepalings- en OIA-verslag te ondersoek en daarop kommentaar te lewer binne die toegelate tyd vir hersiening; en
- Ons te kontak met u kommentaar, navrae, wenke of versoeke om verdere projekinligting.

Om u betrokkenheid by hierdie OIA-proses te verseker, registreer asseblief by EIMS deur u kontakinligting (naam, kontakbesonderhede, belang by die projek) te stuur aan:

### Environmental Impact Management Services (Pty) Ltd

**Posadres: Posbus 2083, Pinegowrie, 2123**

**Telefoon: 011 789 7170**

**Faks: 011 787 3059**

**E-pos: [komsberg@eims.co.za](mailto:komsberg@eims.co.za)**

**Kontakpersoon: Me Nobuhle Hughes**

'n **Konsep-omvangbepalingsverslag** sal vanaf **1 September 2015 tot 1 Oktober 2015** by die volgende plekke vir openbare ondersoek en kommentaar beskikbaar wees:

- Sutherland- openbare biblioteek;
- Laingsburg- openbare biblioteek;
- [www.eims.co.za](http://www.eims.co.za); en
- [www.arcusconsulting.co.za](http://www.arcusconsulting.co.za).

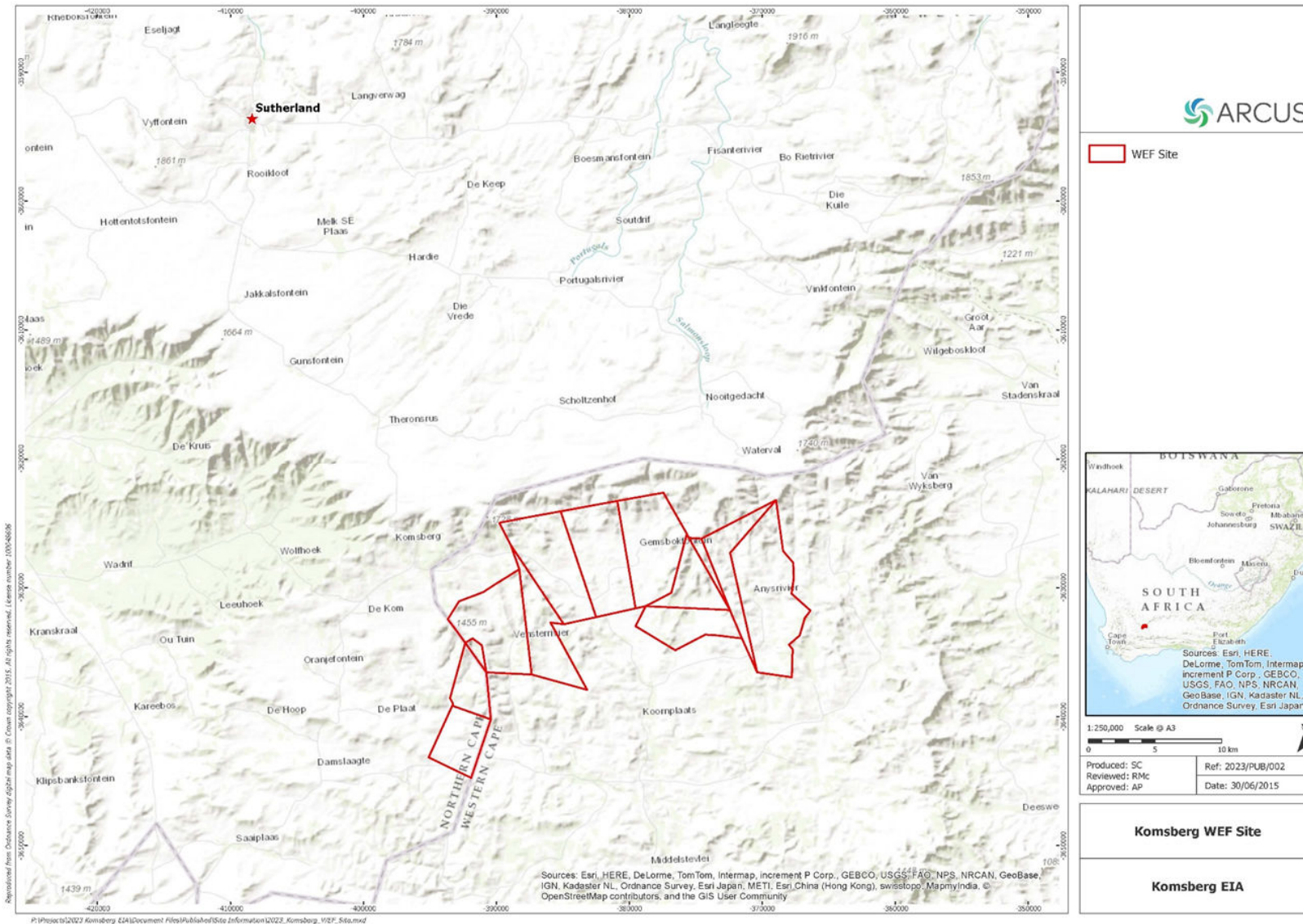
**Geregistreerde B&GP's** sal in kennis gestel word van openbare geleenthede wat gedurende die OIA-proses onderneem sal word.

### Arcus Renewable Energy Consulting

Office 220 Cube Workspace, Cnr Long Street and Hans Strijdom Road, Cape Town, 8001

**T:** +27 21 412 1529 **E:** [office@arcusconsulting.co.za](mailto:office@arcusconsulting.co.za) **W:** [www.arcusconsulting.co.za](http://www.arcusconsulting.co.za)

Registered in South Africa No. 2012/215000/10



**Figuur 1: Liggingplan wat die ligging van die voorgestelde Komsberg-Oos-WKF en Komsberg-Wes-WKF aandui.**