

VIBROCORE		
Point	X	Y
V001	+3 319 879.886	+4 529.801
V002	+3 319 842.482	+4 162.177
V003	+3 319 940.935	+4 435.878
V004	+3 319 953.790	+4 090.331
V005	+3 319 293.298	+3 944.099
V006	+3 319 127.921	+3 722.209
V007	+3 319 260.972	+3 933.298
V008	+3 319 489.921	+3 795.926
V009	+3 319 262.038	+3 487.903
V010	+3 319 082.130	+3 280.989
V011	+3 319 662.432	+3 633.789
V012	+3 319 312.840	+3 408.900
V013	+3 319 062.781	+2 975.847
V014	+3 319 756.374	+2 820.349
V015	+3 319 946.219	+3 295.228
V016	+3 319 299.900	+3 052.482
V017	+3 319 974.201	+2 789.799
V018	+3 319 974.989	+2 939.207
V019	+3 319 062.671	+2 998.841
V020	+3 319 171.028	+2 465.513
V021	+3 319 252.236	+4 694.341
V022	+3 319 052.236	+4 494.341
V023	+3 319 252.236	+4 494.341
V024	+3 319 452.236	+4 494.341
V025	+3 319 252.236	+4 294.341

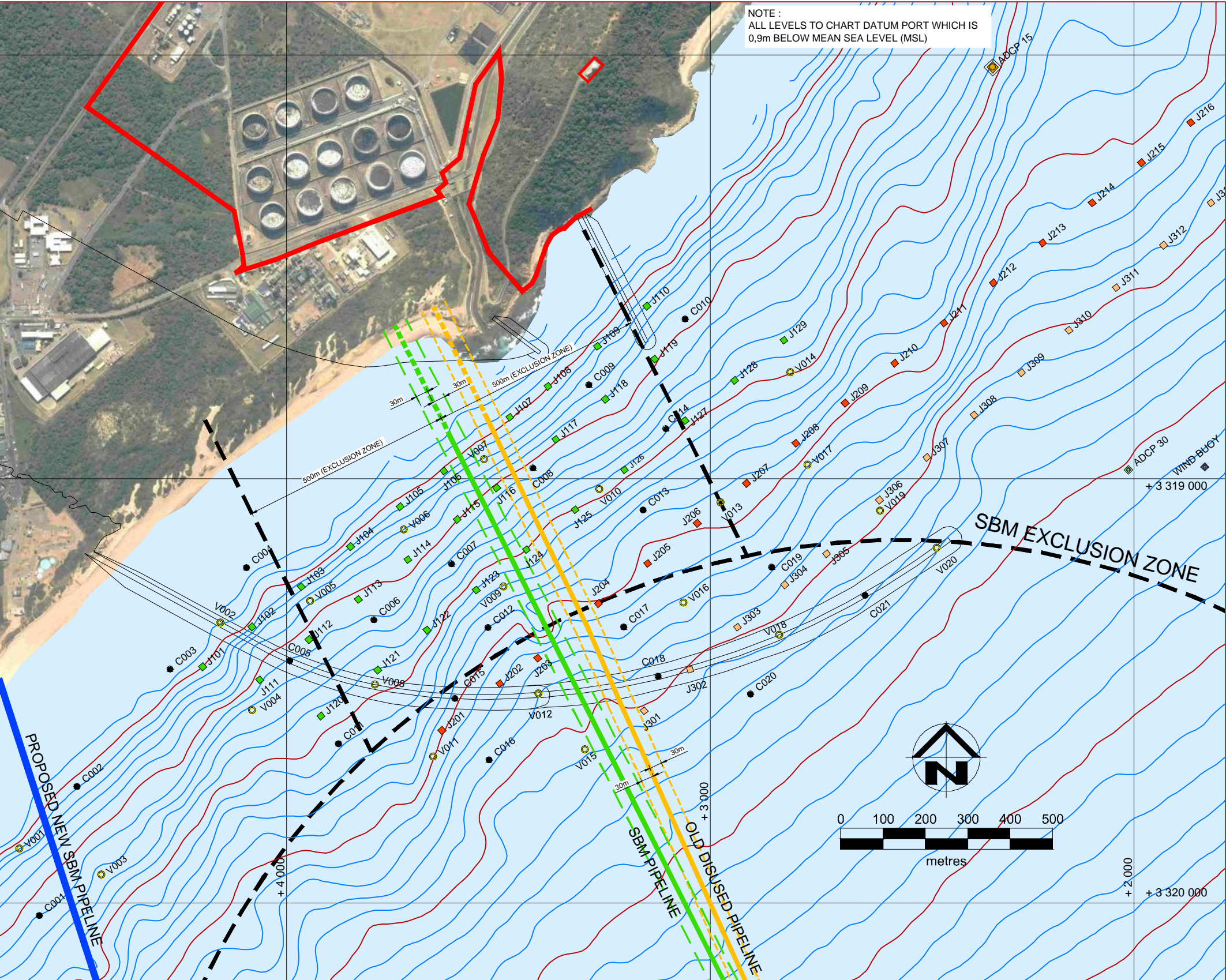
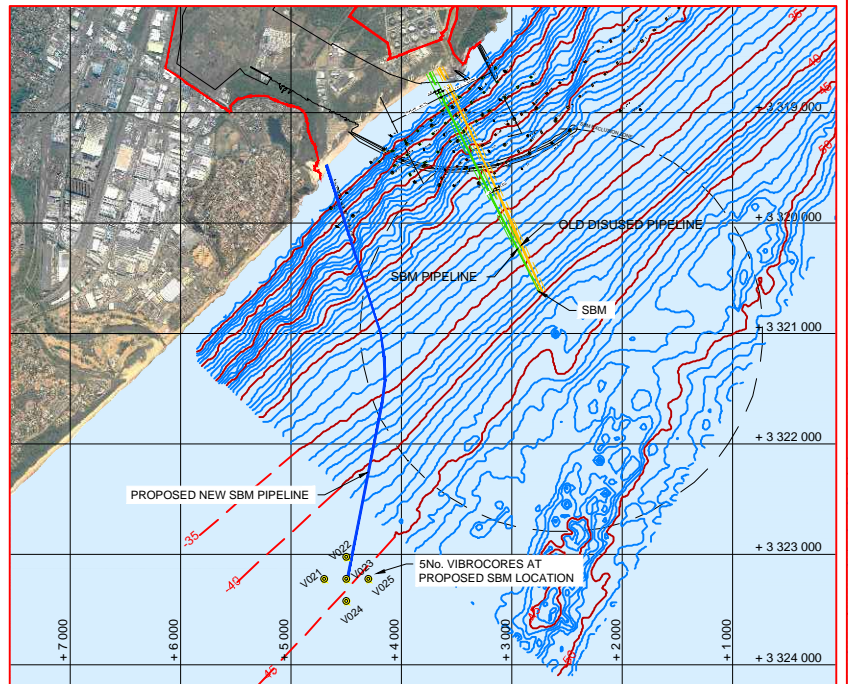
JET PROBES : 12m PENETRATION		
Point	X	Y
J101	+3 319 443.997	+4 198.093
J102	+3 319 349.083	+4 083.624
J103	+3 319 254.998	+3 969.136
J104	+3 319 160.055	+3 846.638
J105	+3 319 065.540	+3 732.182
J106	+3 319 961.448	+3 628.544
J107	+3 319 865.147	+3 472.895
J108	+3 319 761.996	+3 382.748
J109	+3 319 667.484	+3 296.270
J110	+3 319 562.989	+3 218.792
J111	+3 319 473.879	+3 092.282
J112	+3 319 379.964	+3 046.804
J113	+3 319 284.830	+2 930.326
J114	+3 319 190.336	+2 723.848
J115	+3 319 095.822	+2 597.371
J116	+3 319 001.628	+2 504.130
J117	+3 319 906.798	+2 394.425
J118	+3 319 812.179	+2 247.938
J119	+3 319 717.785	+2 131.462
J120	+3 319 623.938	+1 928.900
J121	+3 319 529.190	+1 735.040
J122	+3 319 435.646	+1 568.962
J123	+3 319 342.332	+1 433.084
J124	+3 319 249.132	+1 234.176
J125	+3 319 156.304	+1 079.128
J126	+3 319 66.789	+820.851
J127	+3 319 662.387	+3 039.199
J128	+3 319 767.673	+2 942.721
J129	+3 319 673.939	+2 826.244

JET PROBES : 6m PENETRATION		
Point	X	Y
J301	+3 319 547.354	+3 136.258
J302	+3 319 450.199	+3 047.809
J303	+3 319 350.105	+2 936.084
J304	+3 319 250.016	+2 824.359
J305	+3 319 159.901	+2 723.444
J306	+3 319 048.849	+2 600.909
J307	+3 319 948.755	+2 489.284
J308	+3 318 848.666	+2 377.459
J309	+3 318 748.580	+2 265.734
J310	+3 318 648.489	+2 154.009
J311	+3 318 548.403	+2 042.284
J312	+3 318 448.318	+1 930.559
J313	+3 318 348.230	+1 818.834
J314	+3 318 248.143	+1 707.109
J315	+3 318 148.055	+1 595.384
J316	+3 318 048.968	+1 483.659
J317	+3 317 948.880	+1 371.934
J318	+3 317 848.793	+1 260.209
J319	+3 317 748.705	+1 148.484

CPTU		
Point	X	Y
C001	+3 320 030.578	+4 539.008
C002	+3 319 726.292	+4 494.470
C003	+3 319 448.849	+4 274.479
C004	+3 319 210.139	+4 094.131
C005	+3 319 429.281	+3 991.513
C006	+3 319 933.290	+3 799.793
C007	+3 319 201.409	+3 609.907
C008	+3 318 975.426	+3 417.878
C009	+3 318 779.039	+3 285.919
C010	+3 318 628.611	+3 099.099
C011	+3 318 628.474	+3 878.929
C012	+3 319 933.540	+3 524.624
C013	+3 319 079.742	+3 138.200
C014	+3 318 882.423	+3 104.387
C015	+3 319 518.862	+3 602.298
C016	+3 319 688.944	+3 921.689
C017	+3 319 848.944	+3 209.821
C018	+3 319 468.489	+3 122.349
C019	+3 319 208.796	+2 954.737
C020	+3 319 908.626	+2 905.079
C021	+3 319 174.823	+2 694.864

JET PROBES : 12m PENETRATION		
Point	X	Y
J201	+3 319 989.820	+3 633.034
J202	+3 319 483.290	+3 436.921
J203	+3 319 423.097	+3 407.034
J204	+3 319 294.784	+3 289.868
J205	+3 319 199.748	+3 147.388
J206	+3 319 105.238	+3 030.920
J207	+3 319 010.721	+2 934.432
J208	+3 318 916.207	+2 797.955
J209	+3 318 821.693	+2 662.477
J210	+3 318 727.178	+2 584.999
J211	+3 318 632.664	+2 448.521
J212	+3 318 538.150	+2 332.044
J213	+3 318 443.636	+2 215.566
J214	+3 318 349.121	+2 099.088
J215	+3 318 254.607	+1 982.610
J216	+3 318 160.093	+1 866.132

EQUIPMENT		
Point	X	Y
ADCP 15m	+3 528 029.620	+2 852.970
ADCP 30m	+3 528 979.150	+2 018.590
WIND BUOY	+3 528 973.720	+2 852.480



REFERENCE DRAWINGS	
DRAWING NO.	REFERENCE

NOTES:	
LEGEND:	
•	CPTU (21 No.)
○	VIBRO-CORES (25 No.)
■	JET PROBES : 18m PENETRATION (29 No.)
■	JET PROBES : 12m PENETRATION (16 No.)
■	JET PROBES : 6m PENETRATION (19 No.)
■	WINDBUOY (1 No.)
■	ADCP 15 (1 No.)
■	ADCP 30 (1 No.)
ALL CO-ORDINATES PROVIDED TO WG31.	
—	SITE BOUNDARY
—	MAIN OIL PIPELINE
—	SECONDARY (OLD) OIL PIPELINE
—	PROPOSED NEW SBM PIPELINE

REVISIONS	
NO.	DATE

NAME	SIGNATURE	DATE
DRAWN BY	NA	18/04/2013
DRAWING CHECKED	DJC	
DESIGN CHECKED	GPH	18/04/2013
APPROVED	ARW	6/5/13
FILE NAME		
SCALE	AS SHOWN	
PLOT TIME AND DATE	06 May 2013 03:52:14 PM	A1

**PRESTRIDGE ENTREE DEUSCHER WIJNBERG (PTY) LTD** CLIENT

**TRANSNET**

**PROJECT**  
DURBAN DIG OUT PORT SITE INVESTIGATIONS

**DWG No:**  
1099/00/4004 REV 00

DRAWING TITLE	
MARINE BASED GEOTECHNICAL INVESTIGATION ZOOM IN ON SBM PIPELINE	