

## ENVIRONMENTAL AUTHORISATION PROCESSES

### NOTICE OF THE PROPOSED DEVELOPMENT OF THE CAMDEN RENEWABLE ENERGY COMPLEX, COMPRISING VARIOUS ENVIRONMENTAL AUTHORISATION PROCESSES, ERMELO, MPUMALANGA

Notice is given in terms of:

- Regulation 41(2) of GNR 982 (as amended) published under section 24 and 24D of the National Environmental Management Act (No. 107 of 1998) (NEMA) (as amended) for submission of various applications for environmental authorisations (EAs) in respect of activities identified in terms of GNR 983, GNR 984 and GNR 985 (as amended)
- Section 39 or 41(4) of the National Water Act (36 of 1998) (NWA), for the submission of a General Authorisation (GA) or Water Use Licence (WUL) Application (as applicable)
- Section 38(3)(b) of the National Environmental Management: Air Quality Act, 2004 (Act No. 39 of 2004) (NEM: AQA) of an invitation to register comments with regards to an application for an Atmospheric Emissions Licence (AEL)

#### DESCRIPTION AND LOCATION

ENERTRAG South Africa (Pty) Ltd (ENERTRAG), proposes to establish a renewable energy complex, comprising various applications for environmental authorisation, near Ermelo in Mpumalanga. The proposed authorisations includes the following Basic Assessment (BA) and Scoping and Environmental Impact Reporting (S&EIR) processes:

Proponent	Project	Technology	Process	Farm Names
Camden I Wind RF (Pty) Ltd	Up to 210 MW Wind Energy Facility (WEF) including associated infrastructure	Wind	S&EIR	<ul style="list-style-type: none"> <li>• Portion 0, 1 and 3 of Klipfontein Farm No. 442</li> <li>• Portion 1 and 2 of Welgelegen Farm No. 322</li> <li>• Portion 2 and 10 of Uitkomst Farm No. 292</li> <li>• Portion 3 of Langverwatch Farm No. 293</li> <li>• Portion 3 of Klipbank Farm No. 295</li> <li>• Portion 14 of Mooiplaats Farm No. 290</li> <li>• Portion 0, 2 and 3 of Adrianople Farm No. 296</li> <li>• Portion 3,4 and 5 of Buhmansvallei Farm No. 297</li> <li>• Portion 3 and 6 of De Emigrate Farm No. 327</li> <li>• Portion 5 of Klipfontein Farm No. 326</li> </ul>
	Up to 132kV Powerline, substation and associated infrastructure	Transmission Line and Substation	BA	
Camden II Wind RF (Pty) Ltd	Up to 210MW WEF including associated infrastructure	Wind	S&EIR	
	Up to 132kV Powerline, substation and associated infrastructure	Transmission Line and Substation	BA	
Camden I Solar RF (Pty) Ltd	Up to 100MW Solar Energy Facility (SEF) including associated infrastructure	Solar	S&EIR	
	Up to 132kV Powerline, substation and associated infrastructure	Transmission Line and Substation	BA	
Camden Green Energy RF (Pty) Ltd	Hydrogen and Ammonia Plant and associated infrastructure	Green hydrogen and Ammonia	S&EIR	
ENERTRAG South Africa (Pty) Ltd	Up to 400kV Powerline, Common Collector and Main Transmission Substation including associated infrastructure	Transmission Line and Substation	S&EIR	

#### ENVIRONMENTAL APPLICATIONS

The anticipated listed activity numbers associated with the Proposed Projects are reflected in the table below. Should you wish to obtain a complete copy of these listed activities, please contact the Environmental Assessment Practitioner (EAP), details provided below.

Project Name	Listing Notice	Applicable triggers							
Camden I WEF and SEF and Camden II WEF	GNR 983	11	12	19	24	27	28		
	GNR 984	1	15						
	GNR 985	4	12	14					
Green Hydrogen and Ammonia	GNR 983	9	11	12	13	14	19	25	27
	GNR 984	4	6	15	16				
	GNR 985	4	12	14					
400kV Powerline	GNR 983	12	19	27	28				
	GNR 984	9	15						
	GNR 985	4	12	14					
132kV Powerlines	GNR 983	11	12	19	27	28			
	GNR 985	4	12	14					
GA / WUL (as applicable)	Section 21	21 (a), 21 (c), 21 (i) and 21 (g)							
AEL	GNR 893	Category 7: Inorganic Chemicals Industry Subcategory 7.1: Production and or Use in Manufacturing of Ammonia, Fluorine, Fluorine Compounds, Chlorine, and Hydrogen Cyanide							

#### REGISTRATION

WSP Group Africa (Pty) Ltd (WSP) has been appointed as the EAP by ENERTRAG, to manage the respective BA and S&EIR processes. Parties wishing to formally register as stakeholders in order to offer their comment on the Proposed Projects are requested to forward their full contact details to the EAP at the details provided below. Registered stakeholders will be forwarded all future correspondence and notified individually of additional opportunities to participate in the process.

#### DRAFT SCOPING REPORT REVIEW PERIOD

The Draft Environmental Scoping Reports will be made available from WSP on request and/or at the venues below for review and comment for 30 days from **25 February 2022 to 28 March 2022**.

Area	Venue	Street Address	Contact No
Ermelo	Gert Sibande District Municipality	Cnr Joubert & Oosthuise Streets	017 801 7000
	Ermelo Public Library	Cnr. Tauta St &, Kerk Street	017 801 3500
	Thusiville Public Library	Wesselton Ext 2	082 797 5119
	Msukaligwa Local Municipality Ermelo Office	Cnr. Tauta St &, Kerk Street	017 801 3500
WSP Website	<a href="https://www.wsp.com/en-ZA/services/public-documents">https://www.wsp.com/en-ZA/services/public-documents</a>		
Datafree Website	<a href="https://wsp-engage.com/">https://wsp-engage.com/</a>		

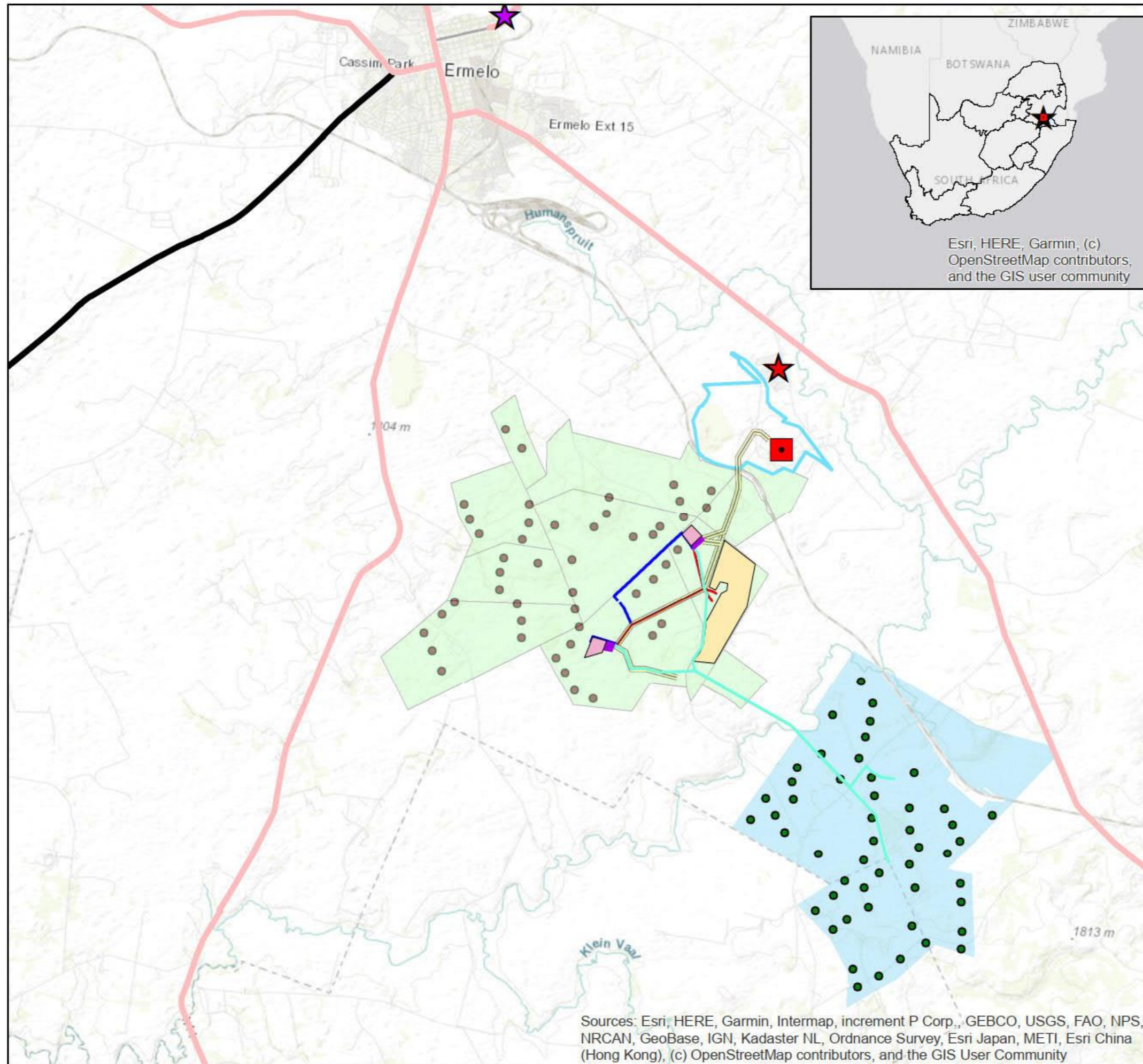
The contact details of the EAP are:

**Name:** Babalwa Mqokeli

**Tel:** 031 240 8804 **Fax:** 011 361 1381 **E-mail:** [babalwa.mqokeli@wsp.com](mailto:babalwa.mqokeli@wsp.com) **Address:** PO Box 98867, Sloane Park, 2152

**Protection of Personal Information:** WSP will be processing certain personal information about you as an interested and affected party (I&AP) for purposes of enabling your registration as an I&AP and storing of your details on our database, if you consent for us to do so. WSP will use these details to contact you about other relevant projects in the future. WSP will always process your personal information in accordance with the Protection of Personal Information Act 4 of 2013. You are entitled to exercise your rights as a data subject and let us know if you wish to be deregistered as an I & AP or if you no longer want your contact details to be included on our database.

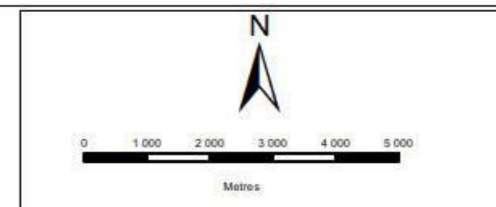




### CAMDEN RENEWABLE ENERGY CLUSTER

#### Legend

- Camden I WEF
- Camden II WEF
- Camden I Solar PV
- Ammonia & Hydrogen Plant Alternatives
- Eskom Camden Power Station
- Collector & Switching SS Alternatives
- CD I WEF 132kV Powerline Alternatives
- CD II WEF 132kV Powerline Alternatives
- Solar Grid up to 132kV Alternatives
- Up to 400kV Grid Connection Alternatives
- National Roads
- Arterial Roads
- Turbine Positions (Camden I)
- Turbine Positions (Camden II)
- Eskom Substation
- Ermelo
- Camden



DATA SOURCE: ESRI  
SOURCE: ARC GIS 10.2 & GIS 10.2

PROJECTION: UTM Zone 35S (WGS1984)

PROJECT TITLE: ENERTRAG MPUMALANGA EIA  
PROJECT NO: 41103247

SCALE: 1:151 400 DATE: 2021/12/10

DRAWN BY: BABALWA MOOKELI  
REVIEWED BY: ASHLEA STRONG



**DISCLAIMER**  
The information on this figure was derived from various digital databases available to WSP Environmental (Pty) Ltd. All information is provided "as is" and it must be acknowledged that data, information, and maps are dynamic and in a constant state of maintenance, correction and update. WSP Environmental (Pty) Ltd cannot accept any responsibility for errors, omissions, or positional accuracy where it has not been directly responsible for the production of the data referenced. There are no warranties, expressed or implied, as to the use of this information, including the warranty of merchantability or fitness for a particular purpose. Notification of any errors will be appreciated.

Figure 1: Camden Renewable Energy Cluster showing the respective projects comprised thereof.

## IZINQUBO ZOKUGUNYAZWA KWEZEMVELO

### ISAZISO NGENTUTHUKO EHLONGOZWAYO YE-CAMDEN RENEWABLE ENERGY COMPLEX, EHLANGANISA IZINQUBO EZAHLUKENE ZEMVELO, ERMELO, MPUMALANGA

Isaziso sinikezwa ngokwemibandela ye:

- Umthethonqubo 41(2) we-GNR 982 (njengoba uchitshiyelwe) oshicilelwe ngaphansi kwesigaba 24 no-24D soMthetho Wokuphathwa Kwemvelo Kazwelonke (No. 107 ka-1998) (NEMA) (njengoba uchitshiyelwe) ukuze kuthunyelwe izicelo ezihlukahlukene zokugunyazwa kwezemvelo (EAs) mayelana nemisebenzi ehlonzwe ngokwe-GNR 983, GNR 984 kanye ne-GNR 985 (njengoba ichitshiyelwe)
- Isigaba sama-39 noma sama-41(4) soMthetho Wamanzi Kazwelonke (36 ka-1998) (NWA), ukuze kuthunyelwe isicelo sokuGunyazwa Okujwayelekile (GA) noma seLayisense Yokusebenzisa Amanzi (WUL) (njengoba sikhona)
- Isigaba sama-38(3)(b) soMthetho Wokuphathwa Kwemvelo Kazwelonke: UMthetho Wekwalithi Yomoya, 2004 (uMthetho No. 39 ka-2004) (NEM: AQA) wesimemo sokubhalisa imibono mayelana nesicelo Selayisensi Yokungcoliswa Komoya (i-AEL)

#### INCAZELO NENDAWO

I-ENERTRAG South Africa (Pty) Ltd (ENERTRAG), ihlongoza ukusungula inxanxathela yamandla avuselelekayo, ehlanganisa izicelo ezihlukahlukene zokugunyazwa kwezemvelo, eduze kwase-Ermelo eMpumalanga. Izigunyazo ezihlongozwayo zihlanganisa lezi zinqubo ezilandelayo Zokuhlola Okuyisisekelo (BA) kanye noMbiko ngokucwaningwa ngokwezemvelo (S&EIR):

Umfakisicelo	iProjekthi	Yobuchwepheshe	Inqubo	Amagama Epulazi
Camden I Wind RF (Pty) Ltd	Ukwakhiwa kwesikhungo esiphehla ugesi ngomoya (WEF) esikhiqiza inani lama-MW afika ku 210, kanye nengqalasizinda ehlobene	Umoya	S&EIR	<ul style="list-style-type: none"> <li>• Portion 0, 1 and 3 of Klipfontein Farm No. 442</li> <li>• Portion 1 and 2 of Welgelegen Farm No. 322</li> <li>• Portion 2 and 10 of Uitkomst Farm No. 292</li> <li>• Portion 3 of Langverwach Farm No. 293</li> <li>• Portion 3 of Klipbank Farm No. 295</li> <li>• Portion 14 of Mooiplaats Farm No. 290</li> <li>• Portion 0, 2 and 3 of Adrianople Farm No. 296</li> <li>• Portion 3,4 and 5 of Buhrmansvallei Farm No. 297</li> <li>• Portion 3 and 6 of De Emigrate Farm No. 327</li> <li>• Portion 5 of Klipfontein Farm No. 326</li> </ul>
	Ulayini odlulisa ugesi ofika kwi nani elingu 132kV, isiteshi esincane kanye nengqalasizinda edingekile	Ulayini Wokudlulisa kanye Nesiteshi Esincane	BA	
Camden II Wind RF (Pty) Ltd	Ukwakhiwa kwesikhungo esiphehla ugesi ngomoya (WEF) esikhiqiza inani lama-MW afika ku 210, kanye nengqalasizinda ehlobene	Umoya	S&EIR	
	Ulayini odlulisa ugesi ofika kwi nani elingu 132kV, isiteshi esincane kanye nengqalasizinda edingekile	Ulayini Wokudlulisa kanye Nesiteshi Esincane	BA	
Camden I Solar RF (Pty) Ltd	Ukwakhiwa kwesikhungo esiphehla ugesi ngelanga (WEF) esikhiqiza inani lama-MW afika ku 100, kanye nengqalasizinda ehlobene	Ilanga	S&EIR	
	Ulayini odlulisa ugesi ofika kwi nani elingu 132kV, isiteshi esincane kanye nengqalasizinda edingekile	Ulayini Wokudlulisa kanye Nesiteshi Esincane	BA	
Camden Green Energy RF (Pty) Ltd	Isikhungo se-Hydrogen and Ammonia kanye nengqalasizinda ehlobene	I-hydrogen eluhlaza ne-ammonia	S&EIR	
ENERTRAG South Africa (Pty) Ltd	Ulayini odlulisa ugesi ofika kwinani elingu 400kV, kuhlanganise nengqalasizinda ehlobene (i-Common Collector kanye ne-Main Transmission Substation, nokunye)	Ulayini Wokudlulisa kanye Nesiteshi Esincane	S&EIR	

#### IZICELO ZEMVELO

Uhlu lwezikhombo ezithintekayo ngalama-Projekthi zivezwe kwi tafula elilandelayo ngezansi. Uma ufisa ukuthola ikhophi ephelele yale misebenzi esohlwini, sicela uthinte I-Environmental Assessment Practitioner (EAP), iminingwane enikezwe ngezansi.

Igama leprojekthi	Isaziso Sohlu	Izibangeli ezisebenzayo							
Camden I WEF and SEF and Camden II WEF	GNR 983	11	12	19	24	27	28		
	GNR 984	1	15						
	GNR 985	4	12	14					
Green Hydrogen and Ammonia	GNR 983	9	11	12	13	14	19	25	27
	GNR 984	4	6	15	16				
	GNR 985	4	12	14					
400kV Ulayini wamandla	GNR 983	12	19	27	28				
	GNR 984	9	15						
	GNR 985	4	12	14					
132kV Izintambo zikagesi	GNR 983	11	12	19	27	28			
	GNR 985	4	12	14					
GA / WUL (njengoba kufanele)	Section 21	21 (a), 21 (c), 21 (i) and 21 (g)							
AEL	GNR 893	Isigaba sesi-7: Isigaba Somkhakha Wamakhemikhali Angaphili 7.1: Ukukhiqizwa kanye noma Ukusetshenziswa Ekukhiqizeni I-Amonia, I-Fluorine, Inhlanganisela Ye-Fluorine, I-Chlorine, ne-Hydrogen Cyanide							

#### UKUBHALISA

I-WSP Group Africa (Pty) Ltd (WSP) iqokwe njenge-EAP yi-ENERTRAG, ukuphatha izinqubo ze-BA kanye ne-S&EIR ezifanele. Abantu abafisa ukubhalisa ngokusemthethweni njengababambe iqhaza ukuze babeke imibono yabo mayelana Nemiklamo Ehlongozwayo bayacelwa ukuba bathumele iminingwane yabo egcwele ku-EAP kule mininingwane enikezwe ngezansi. Ababambiqhaza ababhalisiwe bazothunyelwa zonke izincwadi zesikhathi esizayo futhi baziswe ngamunye ngamanye amathuba okubamba iqhaza kulolu hlelo.

#### ISIKHATHI SOKUBUYEKEZWA KWESIKOPI ESALUNGILE

Imibiko Esalungiswa Yokuhlelwa Kwendawo izotholakala kwa-WSP ngesicelo kanye/noma ezindaweni ezingezansi ukuze ibuyekizwe futhi kuphawulwe ngayo izinsuku ezingamashumi amathathu (30 days) kusukela **25 February 2022 kuya ku-28 March 2022**.

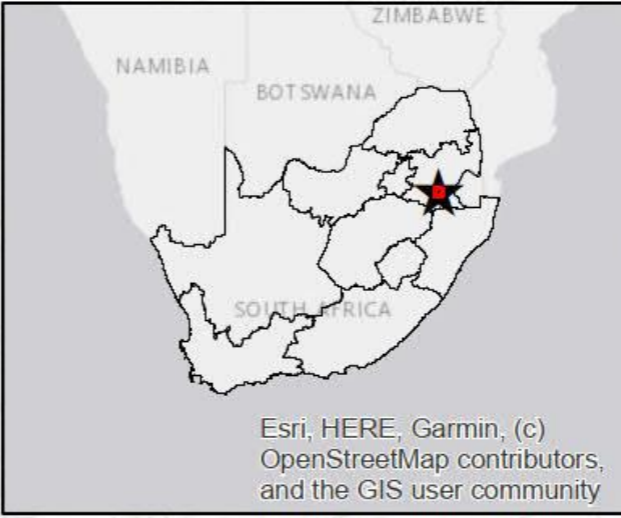
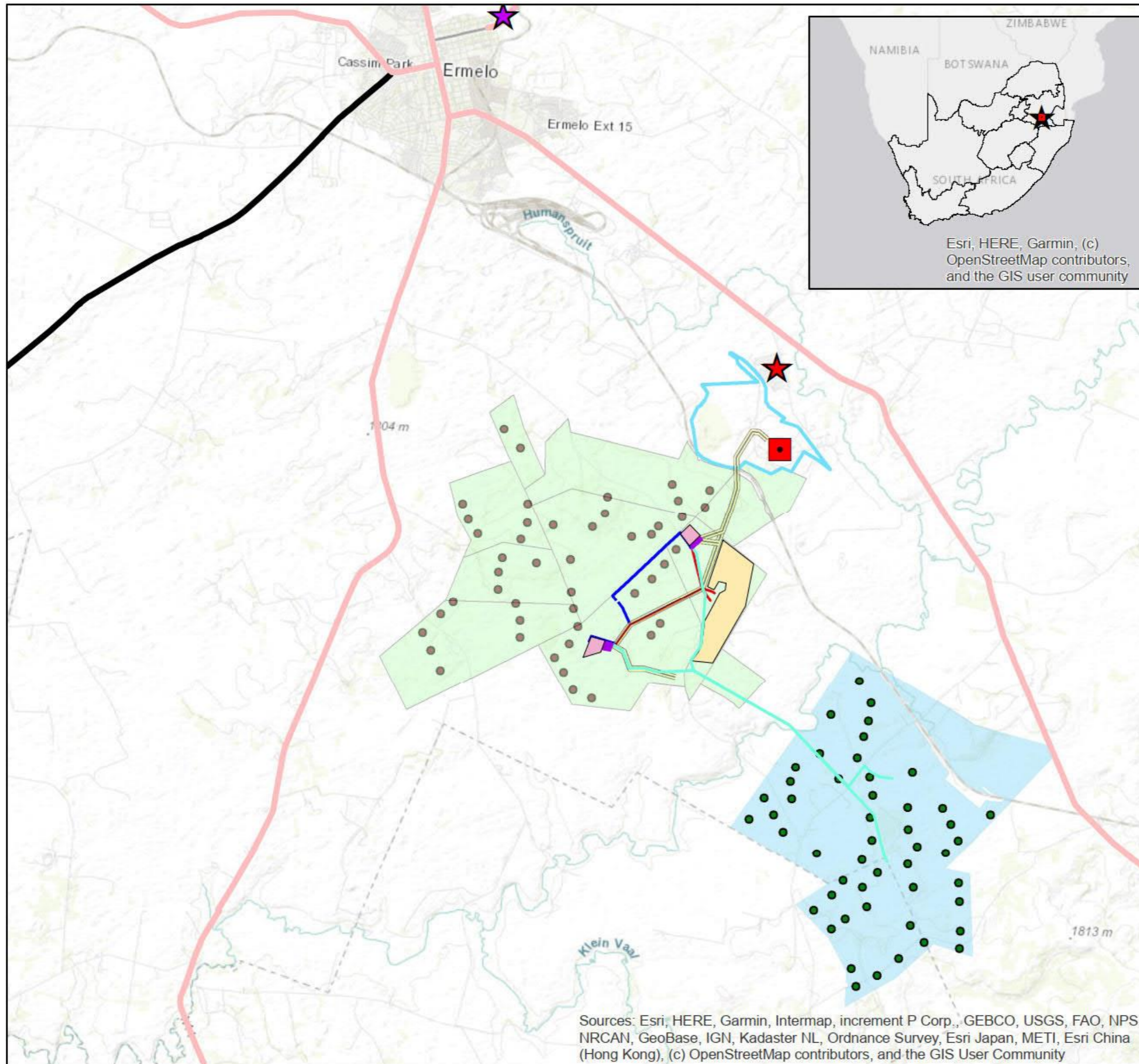
Indawo	Ikheli	Ucingo:
Ermelo	Gert Sibande District Municipality	Cnr Joubert & Oosthuis Streets
	Ermelo Public Library (umtapowolwazi e-Ermelo)	Cnr. Tauta St &, Kerk Street
	Thusiville Public Library (umtapowolwazi e-Thusiville)	Wesselton Ext 2
	Msukaligwa Local Municipality Ermelo Office	Cnr. Tauta St &, Kerk Street
WSP Website	<a href="https://www.wsp.com/en-ZA/services/public-documents">https://www.wsp.com/en-ZA/services/public-documents</a>	
Datafree Website	<a href="https://wsp-engage.com/">https://wsp-engage.com/</a>	

Iminingwane yokuxhumana ye-EAP ithi:

**Igama:** Babalwa Mqokeli **Ucingo:** 031 240 8804 **IFekisi:** 011 361 1381 **i-Imeyili:** babalwa.mqokeli@wsp.com **Ikheli:** PO Box 98867, Sloane Park, 2152

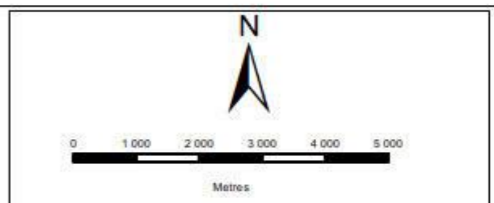
**Ukuvikelwa kweMningwane yoMuntu Siqu:** I-WSP izocubungula iminingwane ethile ngawe njengomuntu onentshisekelo noma othintekayo (I&AP) ngezinjongo zokubhalisa njenge I&AP nokugcina iminingwane yakho kusizindalwazi lwethu, uma usivumela ukwenza njalo. I-WSP izosebenzisa le mininingwane ukuze ixhumane nawe mayelana namanye amaphrojekthi abalulekile esikhathini esizayo. I-WSP izohlezi icubungula iminingwane yakho ngokuhambisana noMthetho Wokuvikela Iminingwane Yomuntu Siqu 4 ka 2013. Unelungelo lokusebenzisa amalungelo akho njengomuntu obhalisile ukuba usazise uma ufisa ukukhishwa kwababhalisiwe njenge-I & AP noma usufuna iminingwane yakho yokuxhumana ikhishwe kusizindalwazi sethu.





**CAMDEN RENEWABLE ENERGY CLUSTER**

- Legend**
- Camden I WEF
  - Camden II WEF
  - Camden I Solar PV
  - Ammonia & Hydrogen Plant Alternatives
  - Eskom Camden Power Station
  - Collector & Switching SS Alternatives
  - CD I WEF 132kV Powerline Alternatives
  - CD II WEF 132kV Powerline Alternatives
  - Solar Grid up to 132kV Alternatives
  - Up to 400kV Grid Connection Alternatives
  - National Roads
  - Arterial Roads
  - Turbine Positions (Camden I)
  - Turbine Positions (Camden II)
  - Eskom Substation
  - Ermelo
  - Camden



DATA SOURCE:  
ARC GIS 10.2

PROJECTION: UTM Zone 35S (WGS1984)

PROJECT TITLE: ENERTRAG MPUMALANGA EIA  
PROJECT NO: 41103247

SCALE: 1:151 400      DATE: 2021/12/10

DRAWN BY: BABALWA MOOKELI  
REVIEWED BY: ASHLEA STRONG



**DISCLAIMER**  
The information on this figure was derived from various digital databases available to WSP Environmental (Pty) Ltd. All information is provided 'as is' and it must be acknowledged that data, information, and maps are dynamic and in a constant state of maintenance, correction and update. WSP Environmental (Pty) Ltd cannot accept any responsibility for errors, omissions, or positional accuracy where it has not been directly responsible for the production of the data referenced. There are no warranties, expressed or implied, as to the use of this information, including the accuracy of merchantability or fitness for a particular purpose. Notification of any errors will be appreciated.

Sources: Esri, HERE, Garmin, Intermap, increment P Corp., GEBCO, USGS, FAO, NPS, NRCAN, GeoBase, IGN, Kadaster NL, Ordnance Survey, Esri Japan, METI, Esri China (Hong Kong), (c) OpenStreetMap contributors, and the GIS User Community

Isithombe 1: Inxanxathela Yamandla Avuselekayo e-Camden ekhombisa amaPhrojekthi ayo.

## OMGEWINGSMAGTIGINGSPROSESSE

### KENNISGEWING VAN DIE VOORGESTELDE ONTWIKKELING VAN DIE CAMDEN HERNUBARE ENERGIEKOMPLEKS, WAT SAL BESTAAN UIT VERSKEIE OMGEWINGSMAGTIGINGSPROSESSE, ERMELO, MPUMALANGA

Kennis word gegee in terme van:

- Regulasie 41(2) van GNR 982 (soos gewysig) gepubliseer in terme van artikel 24 en 24D van die Wet op Nasionale Omgewingsbestuur (No. 107 van 1998) (NEMA) (soos gewysig) vir die indiening van verskeie aansoeke vir omgewingsmagtigings (EA's) ten opsigte van aktiwiteite geïdentifiseer ingevolge GNR 983, GNR 984 en GNR 985 (soos gewysig)
- Artikel 39 of 41(4) van die Nasionale Waterwet (36 van 1998) (NWA), vir die indiening van 'n Algemene Magtiging (GA) of Watergebruiklisensie (WUL) Aansoek (soos van toepassing)
- Artikel 38(3)(b) van die Wet op Nasionale Omgewingsbestuur: Luggehalte, 2004 (Wet No. 39 van 2004) (NEM: AQA) om te registreer en kommentaar te lewer met betrekking tot 'n aansoek vir 'n Atmosferiese Emissielisensie (AEL)

#### BESKRYWING EN LIGGING

ENERTRAG Suid-Afrika (Edms) Bpk (ENERTRAG), stel voor om 'n hernubare energiekompleks, bestaande uit verskeie aansoeke om omgewingsmagtiging, naby Ermelo in Mpumalanga te vestig. Die voorgestelde magtigings sluit die volgende Basiese Evaluering (BE) en Bestekopname en Omgewingsimpakverslagdoening (S&OIR) prosesse in:

Proponent	Projek	Tegnologie	Proses	Plaasname
Camden I Wind RF (Pty) Ltd	Tot en met 210 MW Windenergiefasiliteit (WEF) insluitend verwante infrastruktuur	Wind	S&OIR	<ul style="list-style-type: none"> <li>• Gedeelte 0, 1 en 3 van Klipfontein Plaas No. 442</li> <li>• Gedeelte 1 en 2 van Welgelegen Plaas No. 322</li> <li>• Gedeelte 2 en 10 van Uitkomst Plaas No. 292</li> <li>• Gedeelte 3 van Langverwach Plaas No. 293</li> <li>• Gedeelte 3 van Klipbank Plaas No. 295</li> <li>• Gedeelte 14 van Mooiplaats Plaas No. 290</li> <li>• Gedeelte 0, 2 en 3 van Adrianople Plaas No. 296</li> <li>• Gedeelte 3,4 en 5 van Buhrmansvallei Plaas No. 297</li> <li>• Gedeelte 3 en 6 van De Emigrate Plaas No. 327</li> <li>• Gedeelte 5 van Klipfontein Plaas No. 326</li> </ul>
	Tot en met 132kV Kraglyn, substasie en verwante infrastruktuur	Transmissielyn en substasie	BE	
Camden II Wind RF (Pty) Ltd	Tot en met 210 MW WEF insluitend verwante infrastruktuur	Wind	S&OIR	
	Tot en met 132kV Kraglyn, substasie en verwante infrastruktuur	Transmissielyn en substasie	BE	
Camden I Solar RF (Pty) Ltd	Tot en met 100MW sonkragfasiliteit (SEF) insluitend verwante infrastruktuur	Sonkrag	S&OIR	
	Tot en met 132kV Kraglyn, substasie en verwante infrastruktuur	Transmissielyn en substasie	BE	
Camden Green Energy RF (Pty) Ltd	Waterstof- en Ammoniakaanleg en gepaardgaande infrastruktuur	Green hydrogen and Ammonia	S&OIR	
ENERTRAG South Africa (Pty) Ltd	Tot en met 400kV-kraglyn, gemeenskaplike versamelaar en hooftransmissiesubstasie insluitend geassosieerde infrastruktuur	Transmissielyn en substasie	S&OIR	

#### OMGEWINGSTOEPASSINGS

Die verwagte gelyste aktiwiteitsnommers wat met die voorgestelde projekte geassosieer word, word in die tabel hieronder weerspieël. Indien u die volledige bewoording van hierdie aktiwiteite op die lys wil bekom, kontak asseblief die Omgewingsevalueringpraktisyn (OEP), besonderhede hieronder verskaf.

Projek Naam	Noteringskennisgewing	Toepaslike snellers							
		11	12	19	24	27	28		
Camden I WEF and SEF and Camden II WEF	GNR 983	11	12	19	24	27	28		
	GNR 984	1	15						
	GNR 985	4	12	14					
Green Hydrogen and Ammonia	GNR 983	9	11	12	13	14	19	25	27
	GNR 984	4	6	15	16				
	GNR 985	4	12	14					
400kV Kraglyn	GNR 983	12	19	27	28				
	GNR 984	9	15						
	GNR 985	4	12	14					
132kV Kragdrade	GNR 983	11	12	19	27	28			
	GNR 985	4	12	14					
GA / WUL (soos van toepassing)	Section 21	21 (a), 21 (c), 21 (i) en 21 (g)							
AEL	GNR 893	Kategorie 7: Anorganiese chemikalieë-industrie Subkategorie 7.1: Produksie en of gebruik in die vervaardiging van ammoniak, fluor, fluorverbinding, chloor en waterstofsianied							

#### REGISTRASIE

WSP Group Africa (Edms) Bpk (WSP) is deur ENERTRAG as die OEP aangestel om die onderskeie BA- en S&OIV-prosesse te behartig. Partye wat formeel as belanghebbendes wil registreer om hul kommentaar oor die voorgestelde projekte te lewer, word versoek om hul volledige kontakbesonderhede aan die OEP te stuur by die besonderhede hieronder verskaf. Geregistreeerde belanghebbendes sal alle toekomstige korrespondensie aangestuur word en individueel in kennis gestel word van bykomende geleenthede om aan die proses deel te neem.

#### KONSEP OMFANGVERSLAG OORSIGTYDPERK

Die Konsep Omgewingsbestekverslae sal vir hersiening en kommentaar beskikbaar gestel word op versoek vanaf WSP en by die lokale hieronder, vir 30 dae vanaf **25 Februarie 2022 tot 28 Maart 2022**.

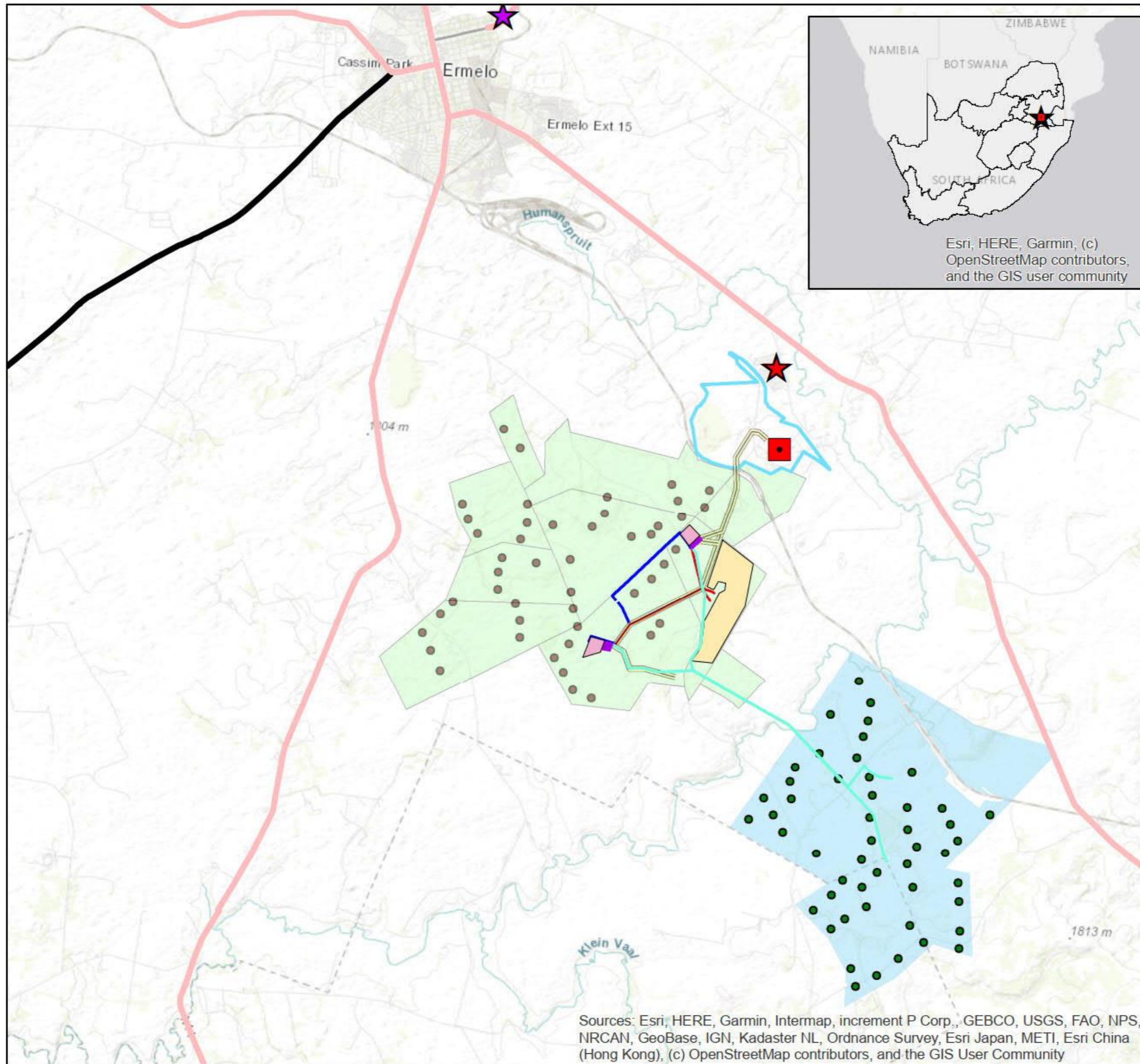
Gebied	Lokaal	Straat Adres	Kontak No
Ermelo	Gert Sibande Distriksmunisipaliteit	Hoek van Joubert & Oosthuise Strate	017 801 7000
	Ermelo Publieke biblioteek	Hoek van Tauta St &, Kerk Strate	017 801 3500
	Thusiville Publieke biblioteek	Wesselton Ext 2	082 797 5119
	Mskuligwa Plaaslike Munisipaliteit Ermelo Kantoor	Cnr. Tauta St &, Kerk Straat	017 801 3500
WSP Webwerf	<a href="https://www.wsp.com/en-ZA/services/public-documents">https://www.wsp.com/en-ZA/services/public-documents</a>		
Datavry Webwerf	<a href="https://wsp-engage.com/">https://wsp-engage.com/</a>		

Die kontakbesonderhede van die OEP is:

**Naam:** Babalwa Mqokeli **Tel:** 031 240 8804 **Fax:** 011 361 1381 **E-pos:** [babalwa.mqokeli@wsp.com](mailto:babalwa.mqokeli@wsp.com) **Adres:** Posbus 98867, Sloane Park, 2152

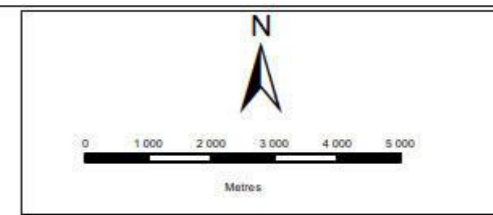
**Beskerming van persoonlike inligting:** WSP sal sekere persoonlike inligting oor jou as 'n belanghebbende en geaffekteerde party (B&GP) verwerk vir doeleindes om jou registrasie as 'n B&GP moontlik te maak en jou besonderhede op ons databasis te stoor, indien jy daartoe instem. WSP sal hierdie besonderhede gebruik om jou te kontak oor ander relevante projekte in die toekoms. WSP sal altyd jou persoonlike inligting verwerk in ooreenstemming met die Wet op die Beskerming van Persoonlike Inligting 4 van 2013. Jy is geregtig om jou regte as 'n datasubjek uit te oefen en ons te laat weet as jy as 'n B & GP gederegistreer wil word of as jy geen langer wil hê dat u kontakbesonderhede op ons databasis ingesluit moet word.





## CAMDEN RENEWABLE ENERGY CLUSTER

- Legend**
- Camden I WEF
  - Camden II WEF
  - Camden I Solar PV
  - Ammonia & Hydrogen Plant Alternatives
  - Eskom Camden Power Station
  - Collector & Switching SS Alternatives
  - CD I WEF 132kV Powerline Alternatives
  - CD II WEF 132kV Powerline Alternatives
  - Solar Grid up to 132kV Alternatives
  - Up to 400kV Grid Connection Alternatives
  - National Roads
  - Arterial Roads
  - Turbine Positions (Camden I)
  - Turbine Positions (Camden II)
  - Eskom Substation
  - Ermelo
  - Camden



DATA SOURCE: ARC GIS 10.2  
 DATA SOURCE: ARC GIS 10.2

PROJECTION: UTM Zone 35S (WSG1984)

PROJECT TITLE: ENERTRAG MPUMALANGA EIA  
 PROJECT NO: 41103247

SCALE: 1:151 400  
 DATE: 2021/12/10

DRAWN BY: BABALWA MOOKELI  
 REVIEWED BY: ASHLEA STRONG



**DISCLAIMER**  
 The information on this figure was derived from various digital databases available to WSP Environmental (Pty) Ltd. All information is provided "as is" and it must be acknowledged that data, information and maps are dynamic and in a constant state of maintenance, correction and update. WSP Environmental (Pty) Ltd cannot accept any responsibility for errors, omissions, or positional accuracy where it has not been directly responsible for the production of the data referenced. There are no warranties, expressed or implied, as to the use of this information, including the warranty of merchantability or fitness for a particular purpose. Notification of any errors will be appreciated.

Sources: Esri, HERE, Garmin, Intermap, increment P Corp., GEBCO, USGS, FAO, NPS, NRCAN, GeoBase, IGN, Kadaster NL, Ordnance Survey, Esri Japan, METI, Esri China (Hong Kong), (c) OpenStreetMap contributors, and the GIS User Community

**Figuur 1: Camden Renewable Energy Cluster wat die onderskeie projekte toon wat daaruit bestaan.**