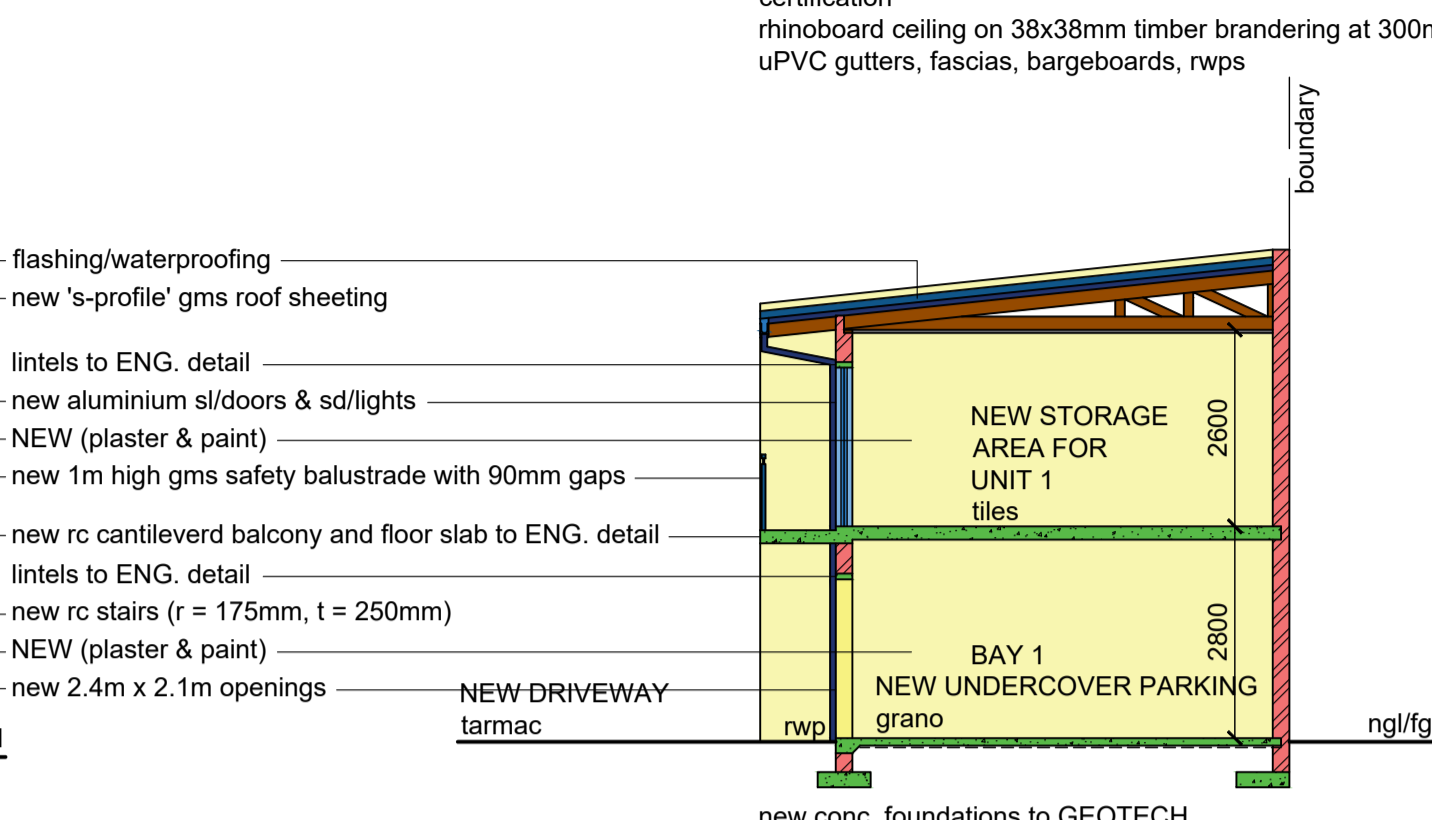
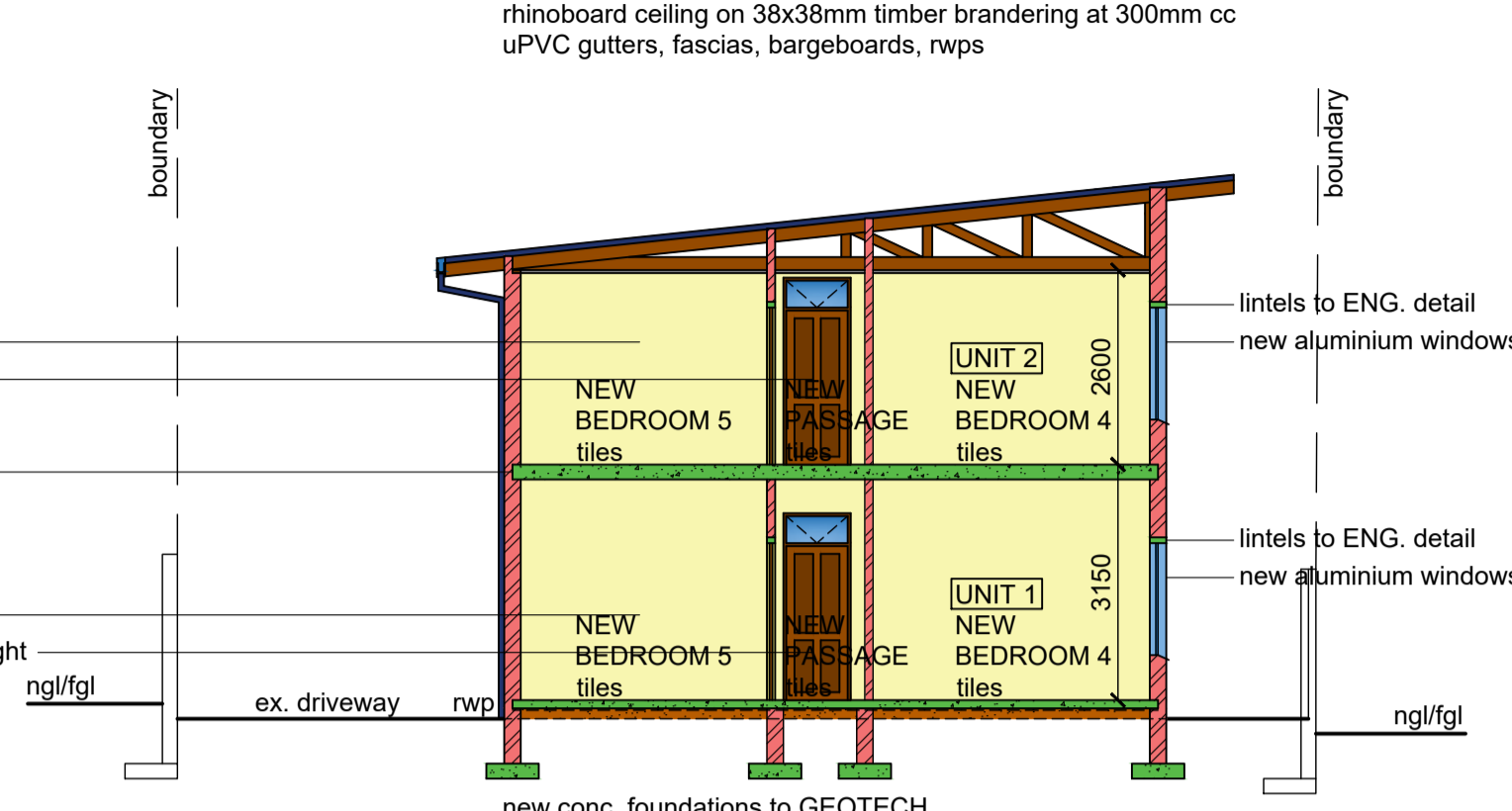


NORTH EAST ELEVATION



SECTION C - C



SECTION B - B

ROOF NOTES:
 roof pitch: 6°
 new factory painted specialized longspan 's-profile' roof sheeting on 50x76mm timber purlins at 1200mm cc on SABS approved underlay on gannailed timber trusses or similar at 1200mm cc on 114x38mm timber wallplate secured with gms roof straps to ENG. design and certification
 rhinoboard ceiling on 38x38mm timber bracing at 300mm cc
 uPVC gutters, fascias, bargeboards, rwps

ROOF NOTES:
 roof pitch: 6°
 new factory painted specialized longspan 's-profile' roof sheeting on 50x76mm timber purlins at 1200mm cc on SABS approved underlay on gannailed timber trusses or similar at 1200mm cc on 114x38mm timber wallplate secured with gms roof straps to ENG. design and certification
 rhinoboard ceiling on 38x38mm timber bracing at 300mm cc
 uPVC gutters, fascias, bargeboards, rwps

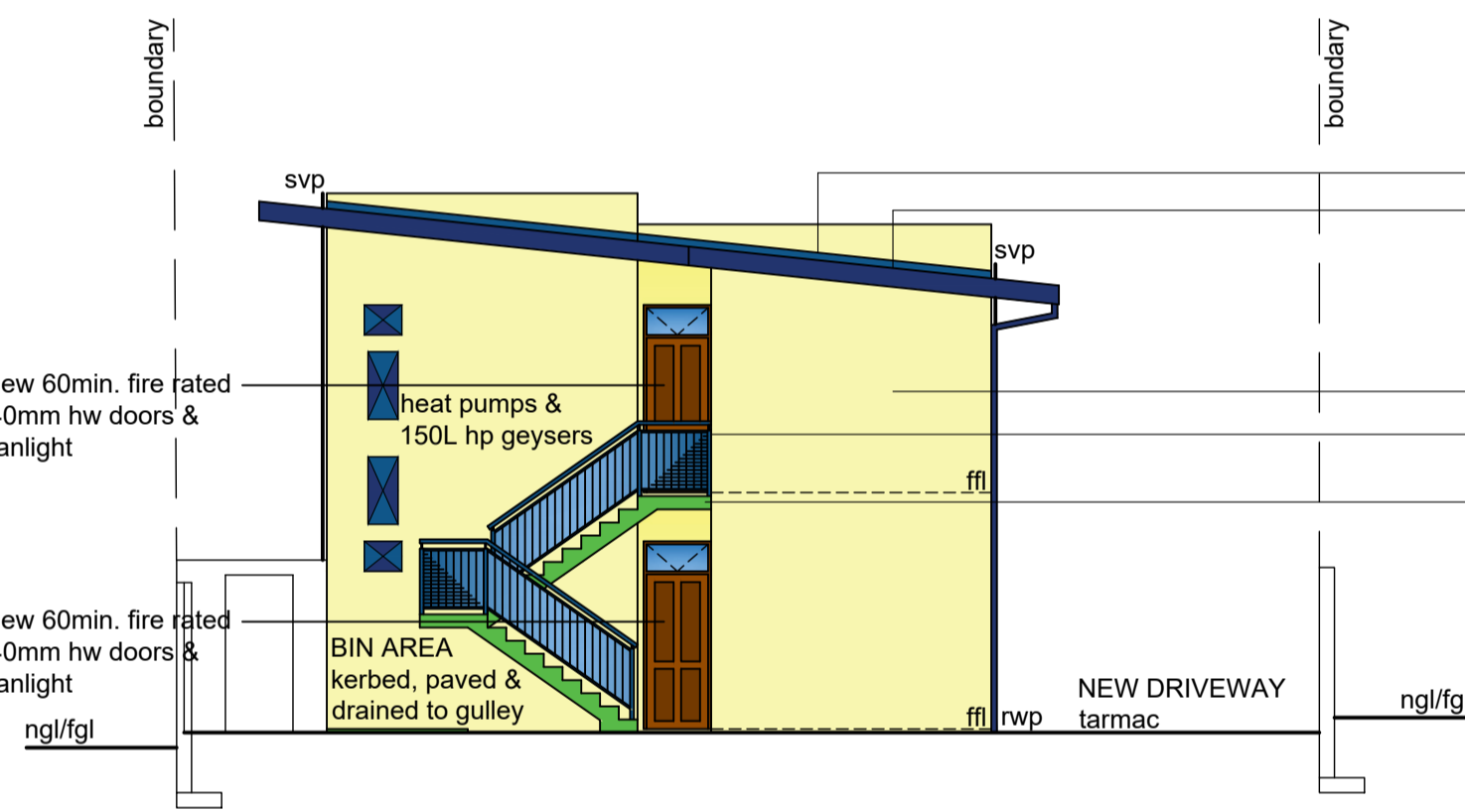
flashing/waterproofing
 new 's-profile' gms roof sheeting
 lintels to ENG. detail
 new aluminium sl/doors & sd/lights
 NEW (plaster & paint)
 new 1m high gms safety balustrade with 90mm gaps
 new rc cantilever balcony and floor slab to ENG. detail
 lintels to ENG. detail
 new rc stairs (r = 175mm, t = 250mm)
 NEW (plaster & paint)
 new 2.4m x 2.1m openings
 NEW DRIVEWAY
 tarmac

NEW (plaster & paint)
 new 60min fire rated hw door & f/light
 new rc floor slab to ENG. details
 NEW (plaster & paint)
 new 60min fire rated hw door & f/light

lintels to ENG. detail
 new aluminium windows
 lintels to ENG. detail
 new aluminium windows

new conc. foundations to GEOTECH
 ENG. report and recommendations
FLOOR NOTES:
 new 110mm thick brc mesh rc surface bed on dpm on well compacted, consolidated, certified poisoned soil

new conc. foundations to GEOTECH
 ENG. report and recommendations
FLOOR NOTES:
 new 110mm thick brc mesh rc surface bed on dpm on well compacted, consolidated, certified poisoned soil

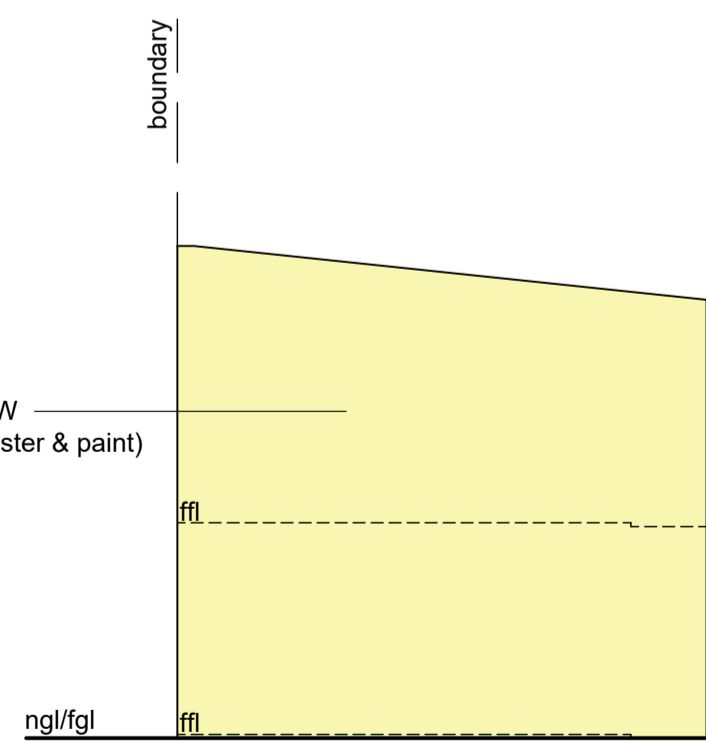


SOUTH WEST ELEVATION

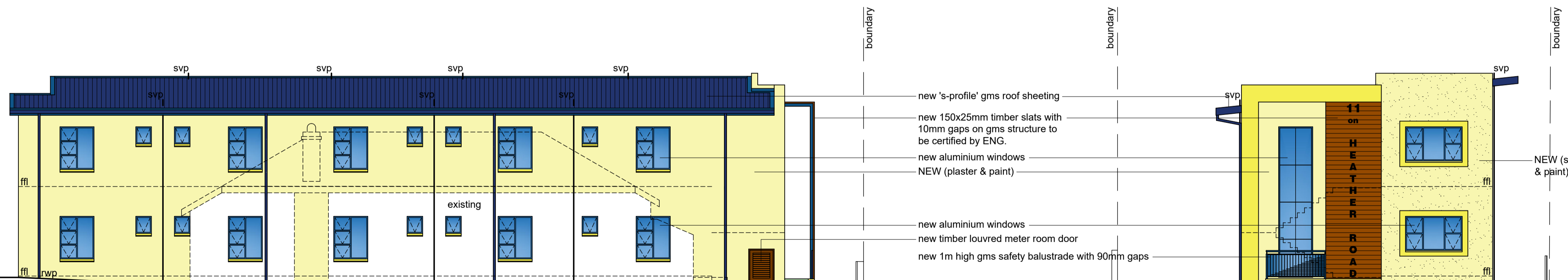


NORTH WEST ELEVATION

flashing/waterproofing
 new 's-profile' gms roof sheeting
 new timber slats on gms structure to be certified by ENG.
 new aluminium windows
 NEW (plaster & paint)
 new 1m high gms safety balustrade with 90mm gaps
 new rc stairs to ENG. detail (r = 175mm, t = 250mm)
 new aluminium windows
 new 1m high gms safety balustrade with 90mm gaps
 NEW DRIVEWAY
 tarmac
 HEATHER ROAD
 pavement
 ex. sewer
 ex. MH1
 100.40
 100.80
 100.80
 800mm
 ex. MH2
 100.66
 100.80
 800mm
 ex. MH3
 101.40
 100.70
 700mm
 new 110mmØ pvc sewer pipe
 16000mm
 1 : 40
 RE1
 101.60
 101.10
 and recommendations and to encroach over boundary



SOUTH EAST ELEVATION



NORTH EAST ELEVATION

new 's-profile' gms roof sheeting
 new 150x25mm timber slats with 10mm gaps on gms structure to be certified by ENG.
 new aluminium windows
 NEW (plaster & paint)
 new aluminium windows
 new timber louvred meter room door
 new 1m high gms safety balustrade with 90mm gaps
 new rc stair (r = 175mm, t = 250mm)
 ex. access scoop
 HEATHER ROAD
 new 110mmØ hd pvc sewer pipe
 12000mm
 1 : 15
 MH4
 100.40
 99.60
 800mm
 MH5
 101.00
 100.40
 600mm
 MH6
 101.00
 100.50
 500mm
 11700mm
 1 : 11.7
 new 110mmØ pvc sewer pipe
 10200mm
 1 : 25.5
 MH4
 100.40
 99.60
 800mm
 ex. MH1
 100.40
 99.20
 1200mm

Total Area = 459.39 m²

Client's Signature: *[Signature]* Contact Number: 083 786 2788
 Rate No. 1075 8035 / 000

PROPOSED ADDITIONS AND ALTERATIONS TO EXISTING HOUSE FOR NEW RESIDENTIAL ACCOMMODATION and NEW OUTBUILDING AT 11 HEATHER ROAD ON PORTION 4 OF ERF 7036 DURBAN FOR 11 ON HEATHER TRUST

GRAHAM BRAUM
 ARCHITECTURAL DESIGNER
 Pr. S. Arch. T
 Reg. No. ST0010
 360 Umbilo Road Durban 4001
 Tel.: 031-2054142
 Cell: 082 454 0441
 Email: gpbdesigners@gmail.com

SCALE: 1 : 100
 CHECKED: G. P. BRAUM
 DRAWN/DESIGNED: M. R. AZMUTH
 DATE: DECEMBER '21-JANUARY '22
 Drawing No.: 6668 / 21 / 2 of 2