

Figure 1: Locality map showing the 500m assessment zone surrounding the Great Karoo Substation proposed for the development of the BESS and associated infrastructure for the authorised Great Karoo Wind Energy Facility

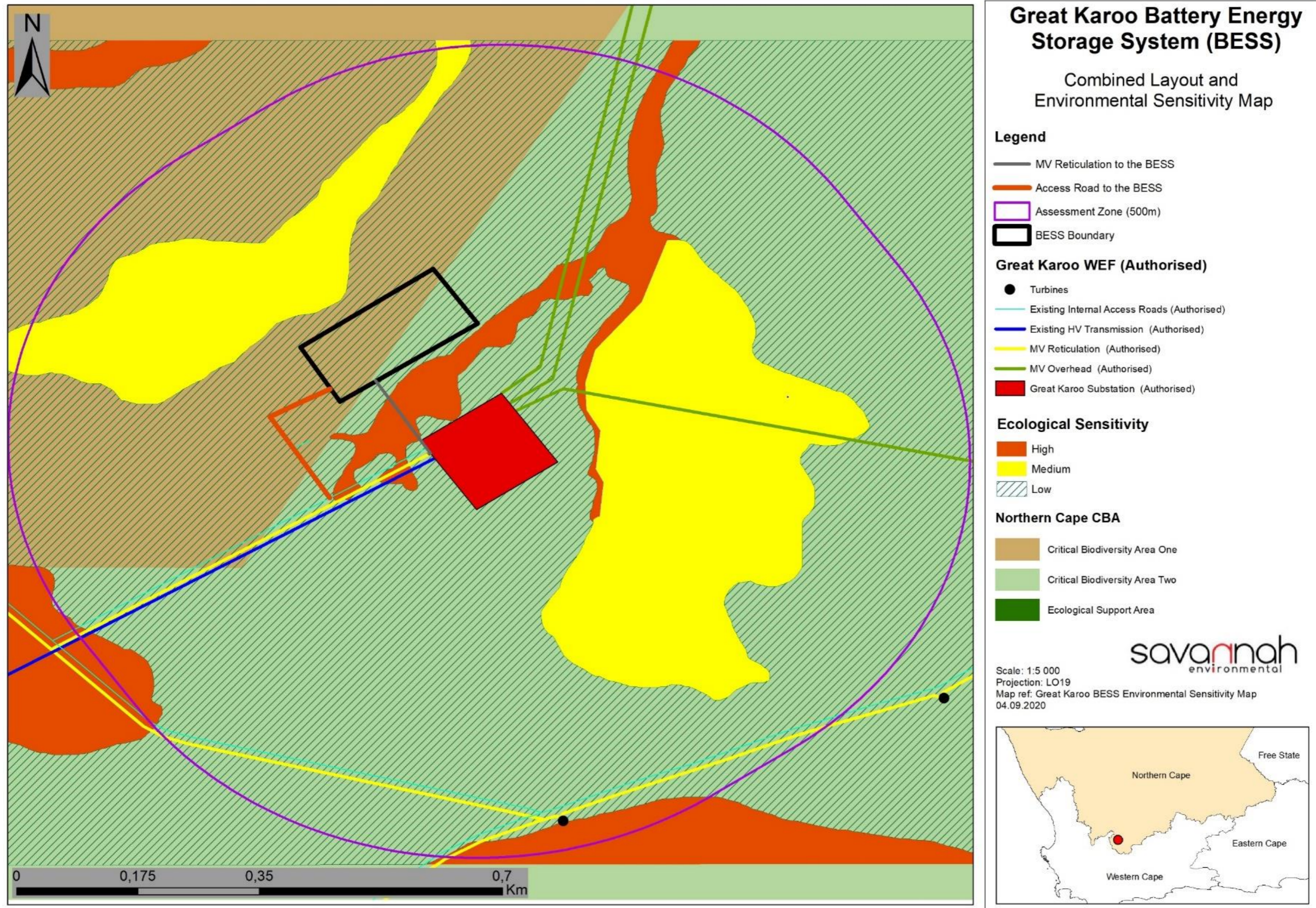


Figure 3: Environmental sensitivity map for the BESS and 500m Assessment Zone surrounding the Great Karoo Substation.

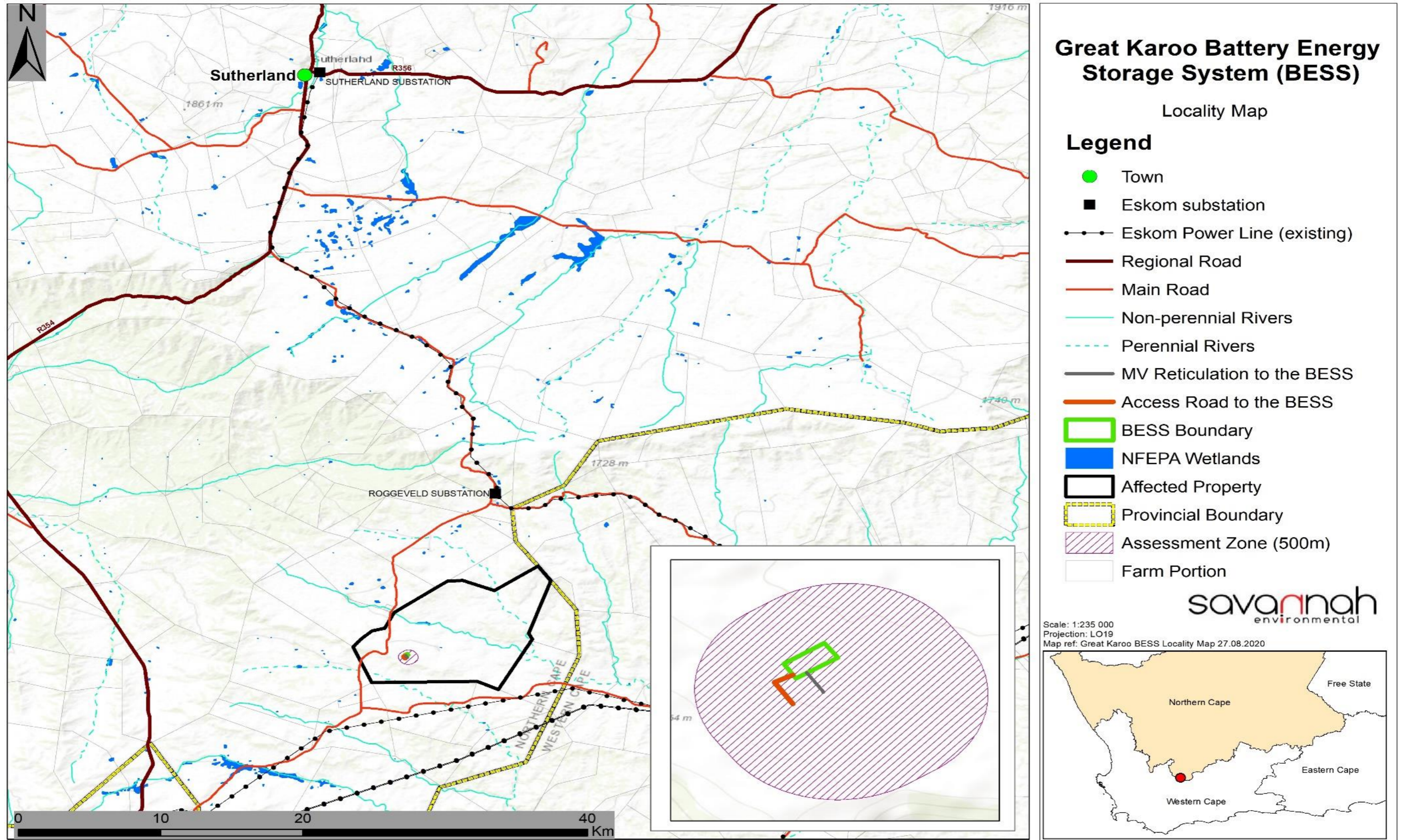


Figure 1.1: Locality map showing the BESS and associated infrastructure for the authorised Great Karoo Energy Facility (refer to Appendix I for A3 map).

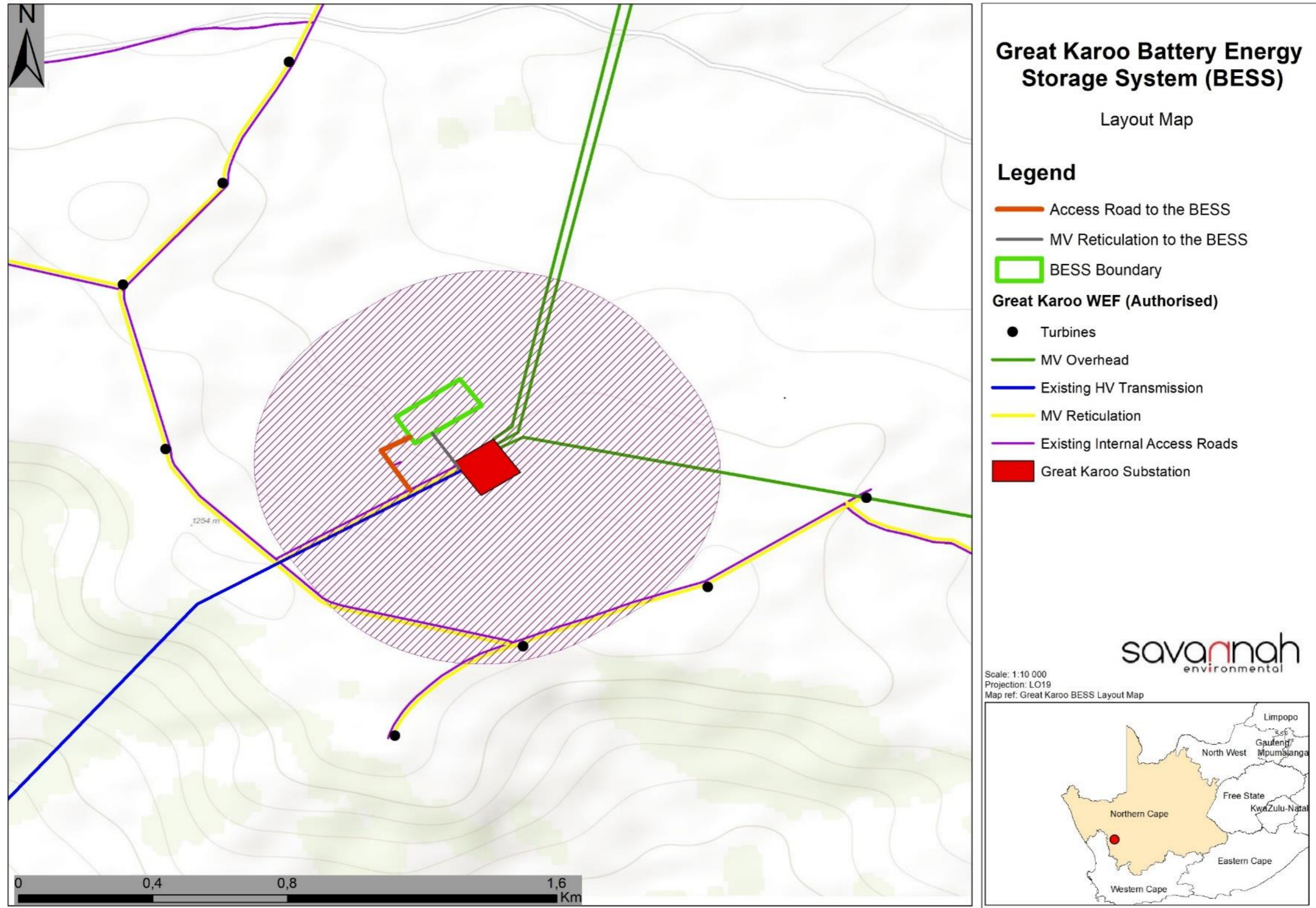


Figure 2.1: Layout Map for Great Karoo BESS and associated Infrastructure for the authorised Great Karoo Wind Energy Facility (refer to Appendix I for A3 map), showing the location of the BESS within the assessment zone.

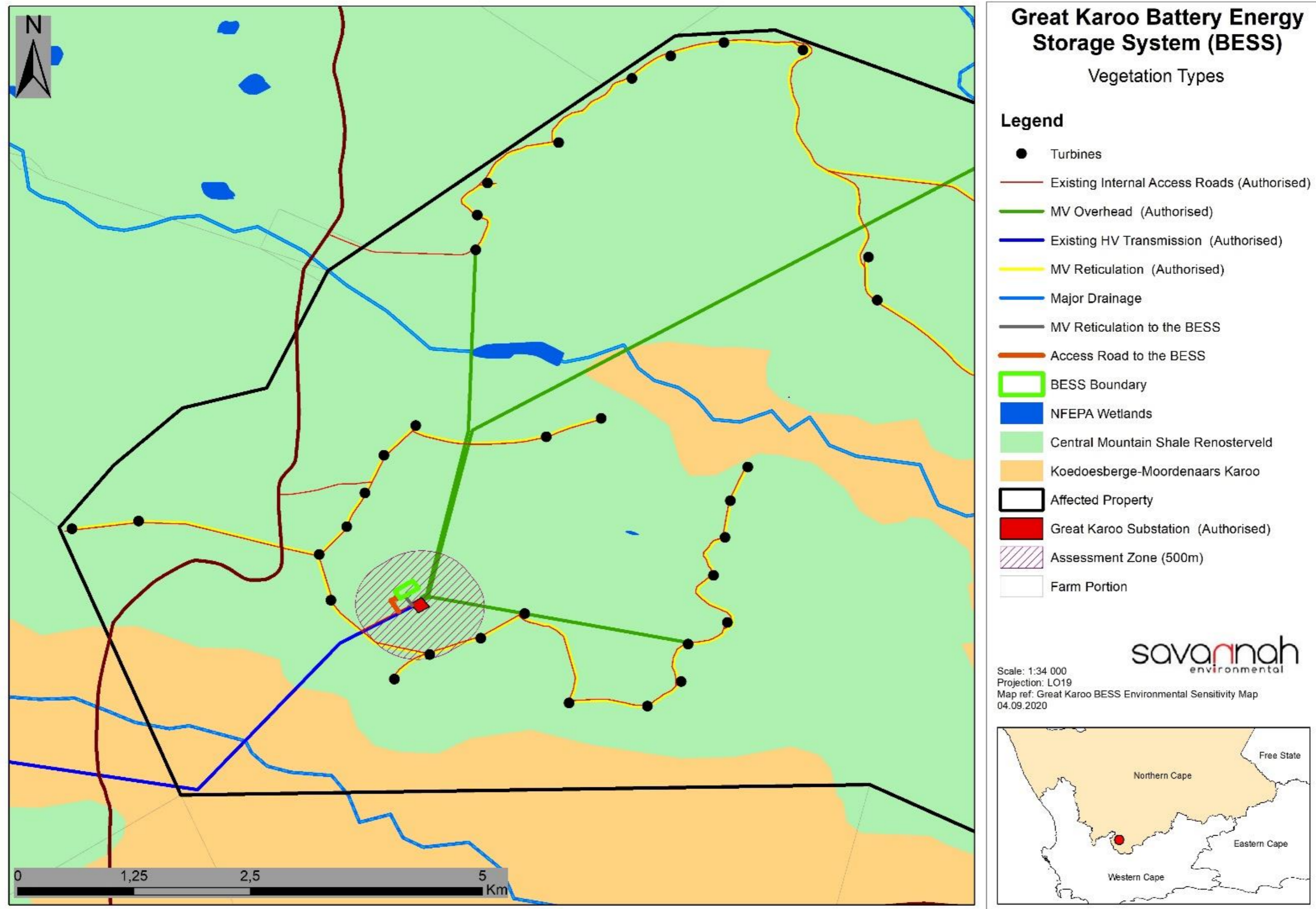


Figure 5.3: Broad-scale overview of the vegetation in and around the Great Karoo substation and BESS study area. The vegetation map is an extract of the national vegetation map (Mucina & Rutherford 2006 & 2018 update) and also includes drainage lines delineated by the NFEPA assessment (Nel et al. 2011).

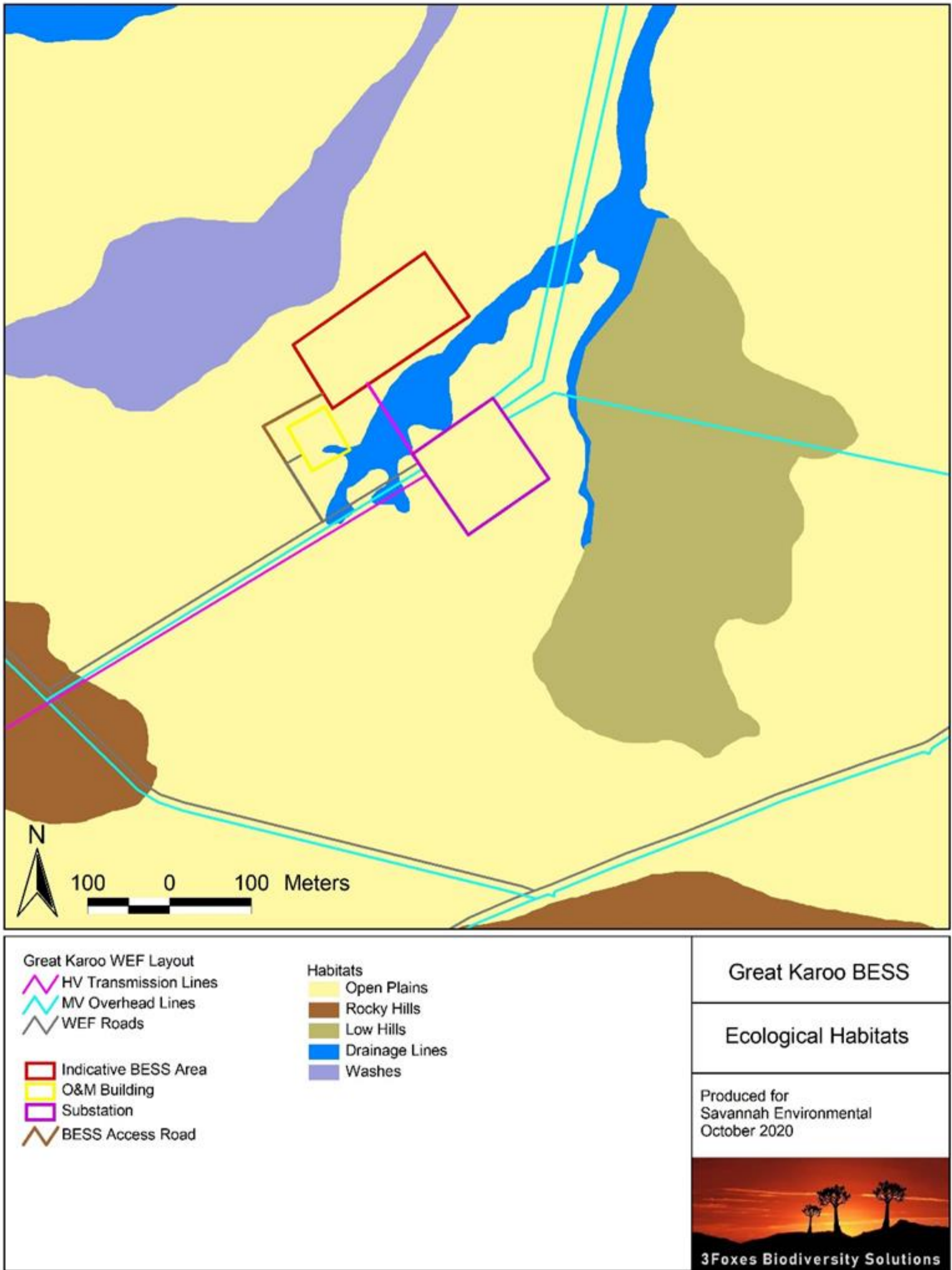


Figure 5.4: Ecological habitats observed within the Great Karoo BESS 500m assessment region and which are described in detail below.

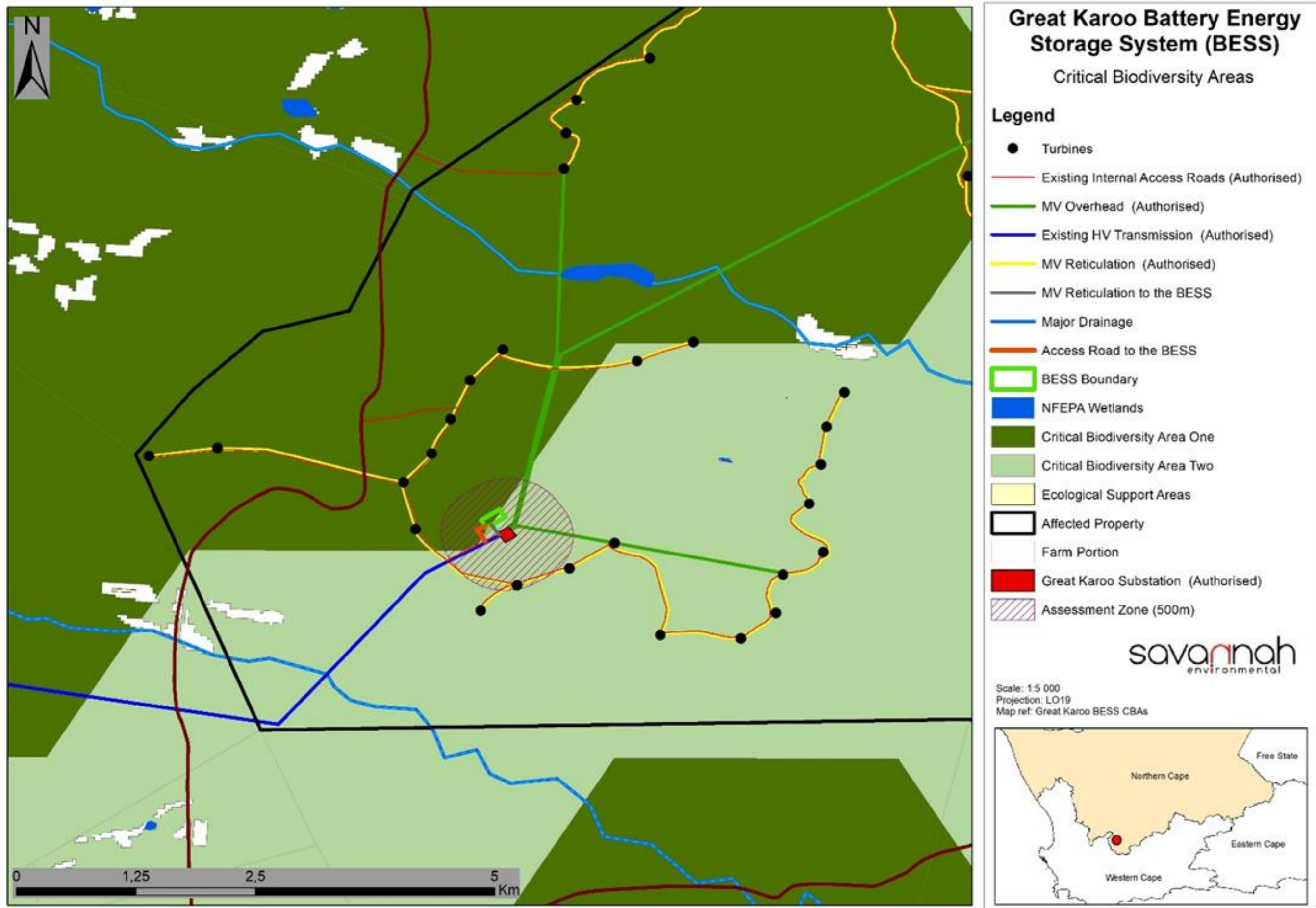


Figure 5.10: Extract of the Northern Cape Critical Biodiversity Areas map for the broader study area around the Great Karoo BESS, showing that the BESS occurs within an area classified as CBA 1 and CBA 2.

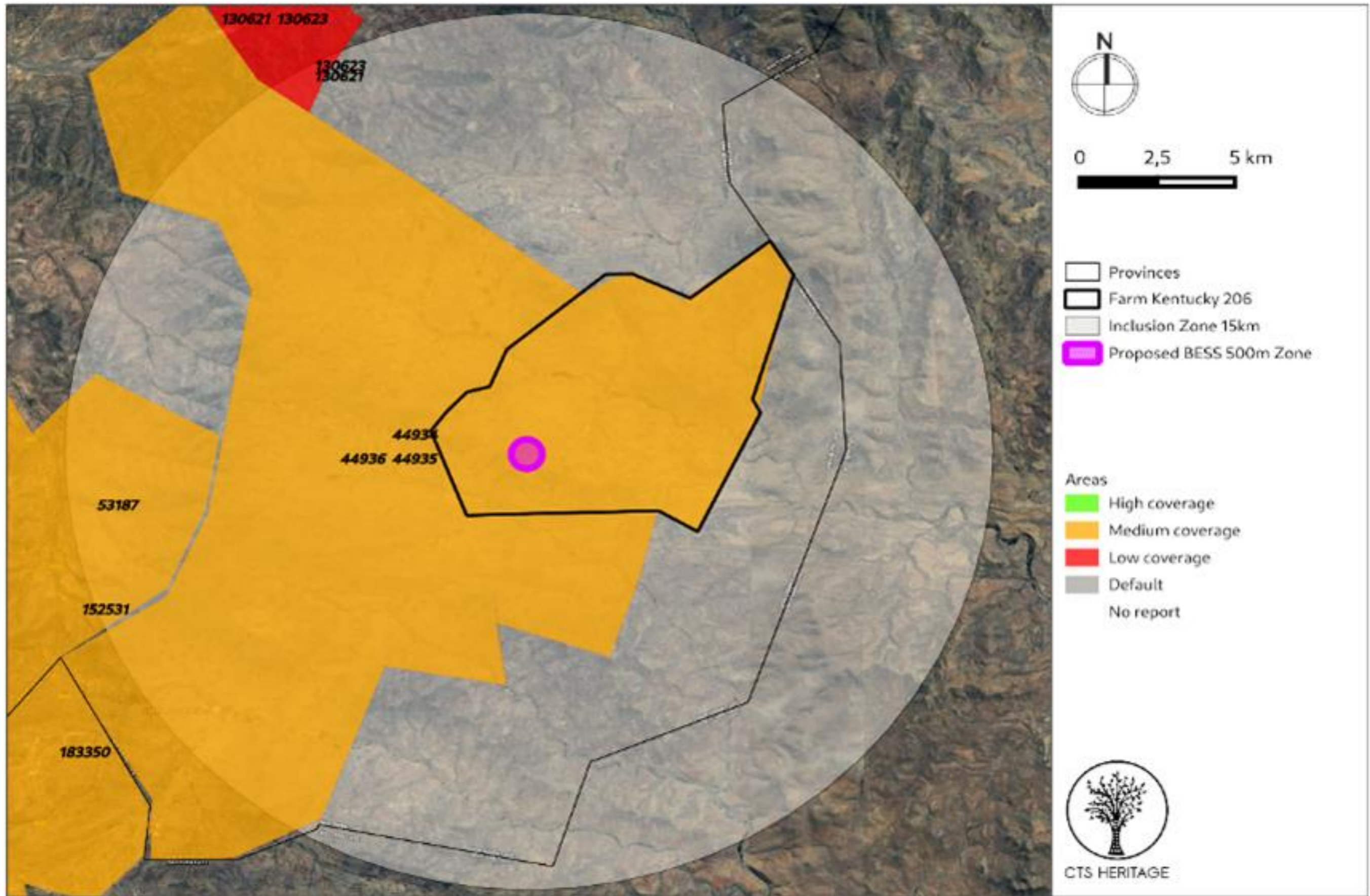


Figure 5.11: Previous HIAs Map. Previous Heritage Impact Assessments covering the proposed development area with SAHRIS NIDS indicated.



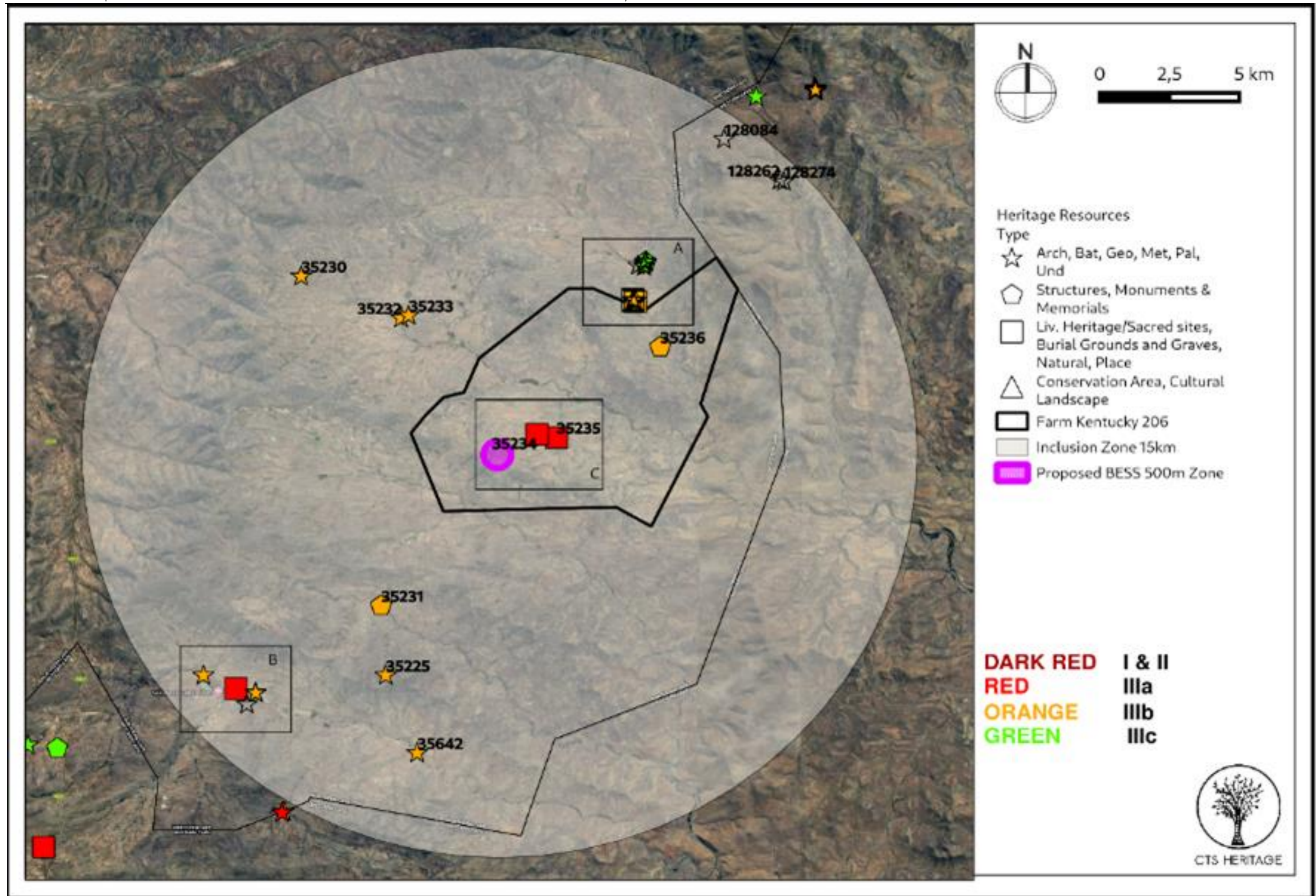


Figure 5.12: Heritage Resources Map. Heritage Resources previously identified within the study area, with SAHRIS Site IDs indicated in the insets below.

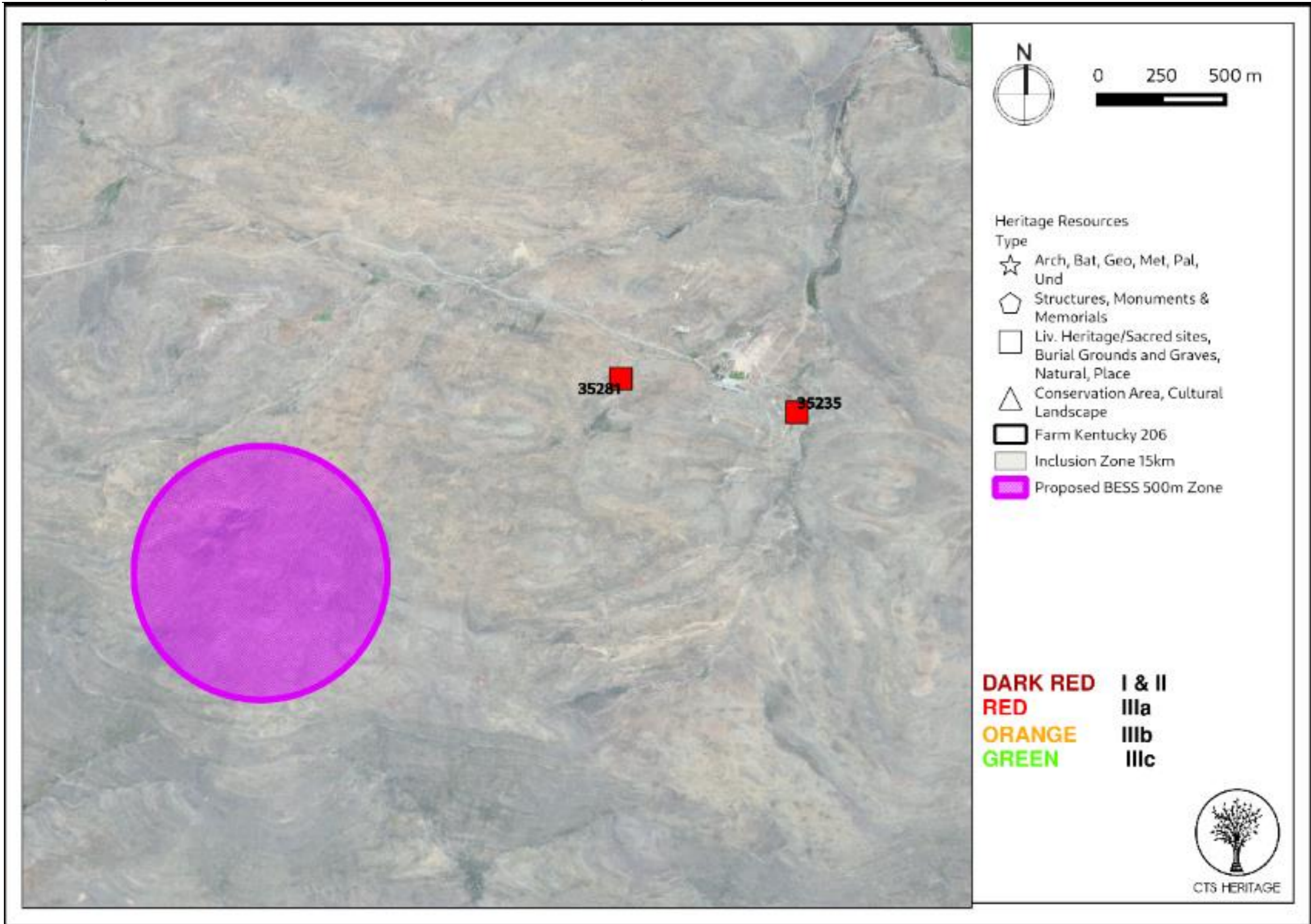






Figure 5.13: Heritage Resources Map. Inset C indicating known sites in relation to the approved WEF layout and proposed BESS.



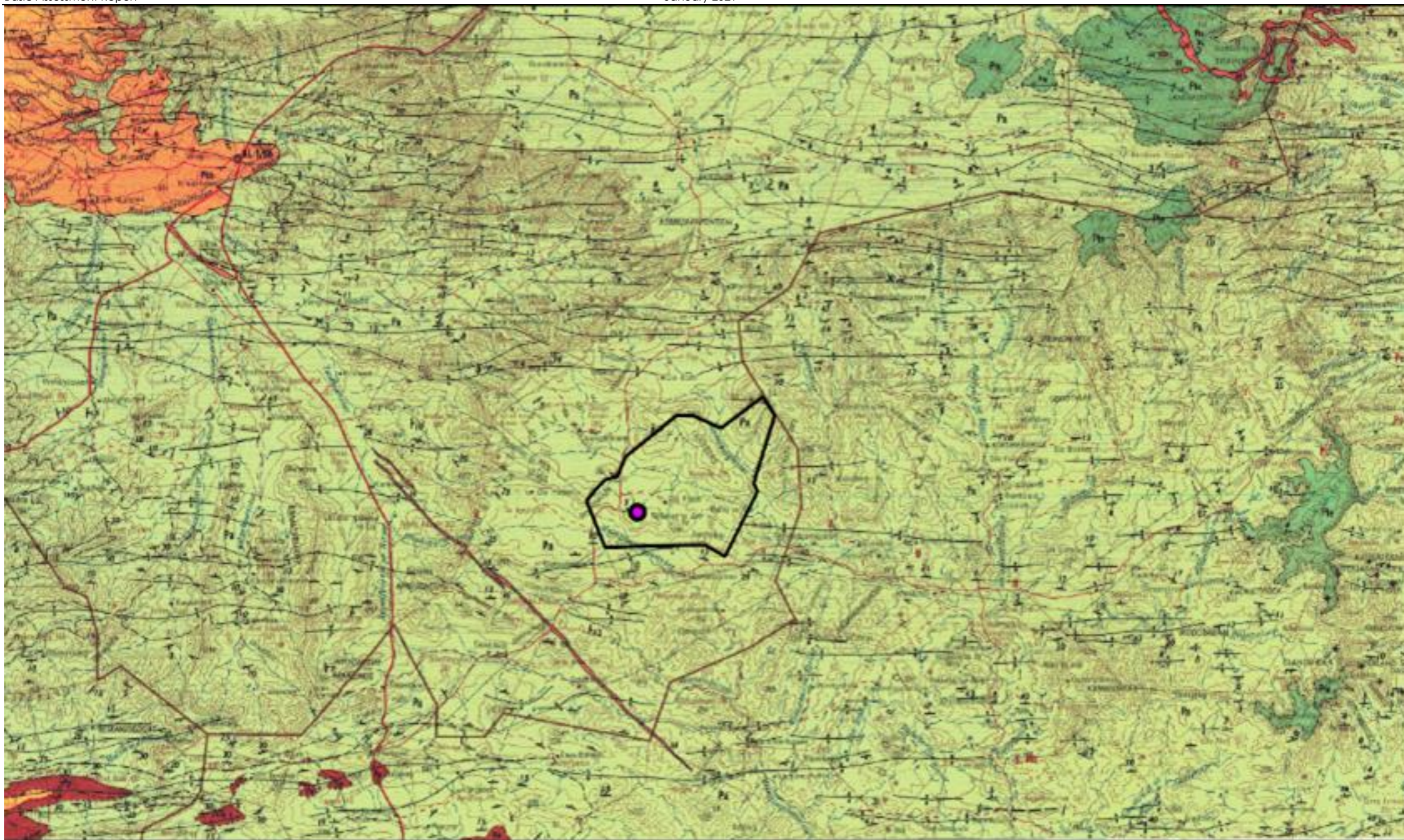
-  Provinces
  -  Farm Kentucky 206
  -  Proposed BESS 500m Zone
- 0      10      20 km
- 



- |        |                    |
|--------|--------------------|
| RED    | Very high          |
| ORANGE | High               |
| GREEN  | Moderate           |
| BLUE   | Low                |
| GREY   | Insignificant/zero |
| WHITE  | Unknown            |



CTS HERITAGE

Figure 5.14: Palaeosensitivity Map. Indicating fossil sensitivity underlying the study area



-  Farm Kentucky 206
-  Proposed BESS 500m Zone

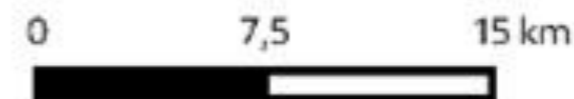


Figure 5.15: Extract from the CGS 3220 Sutherland Map indicating that the development area is underlain by sediments of the Karoo Supergroup assigned to the Beaufort group, within the Abrahamskraal Formation of the Adelaide Subgroup (Pa).

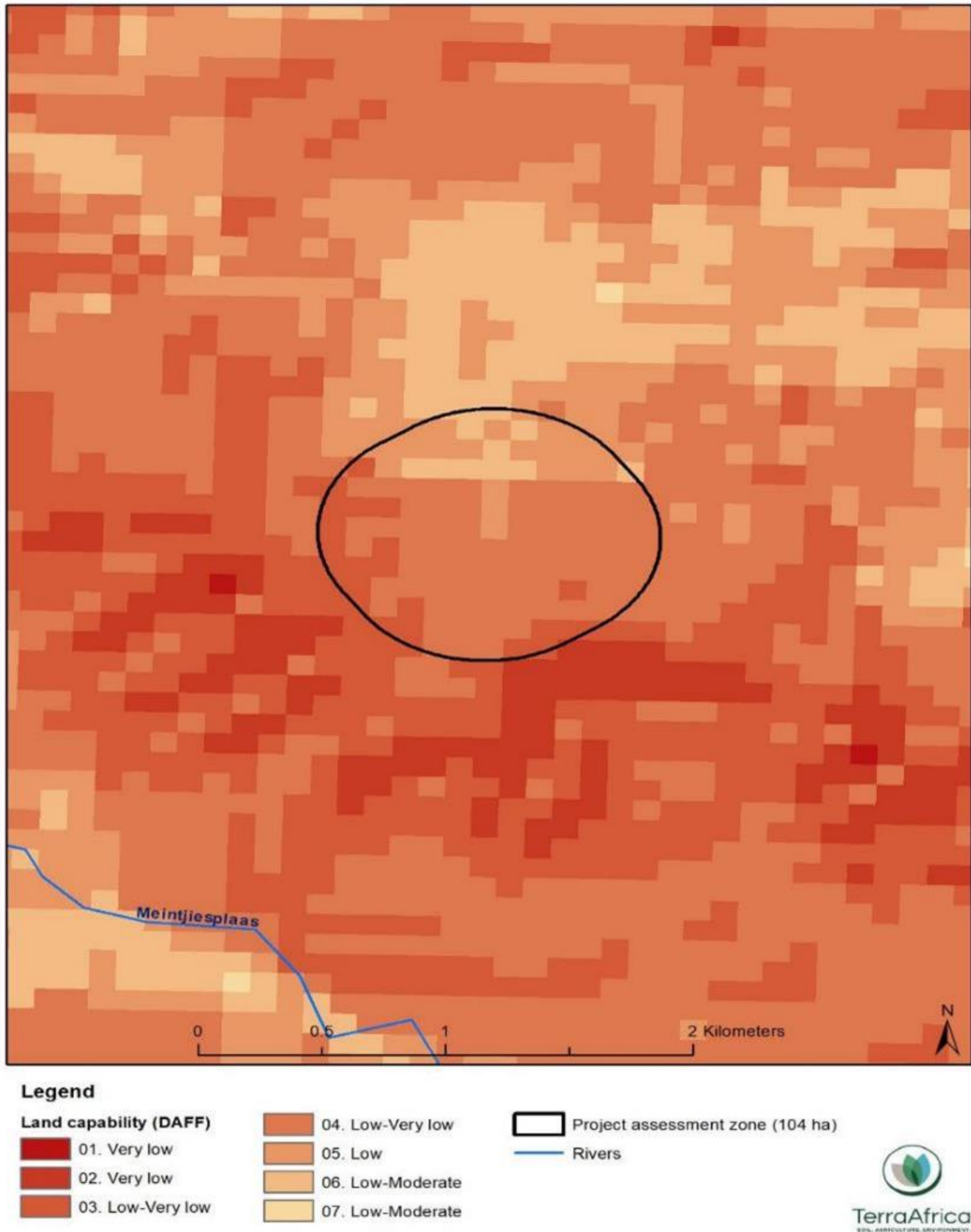
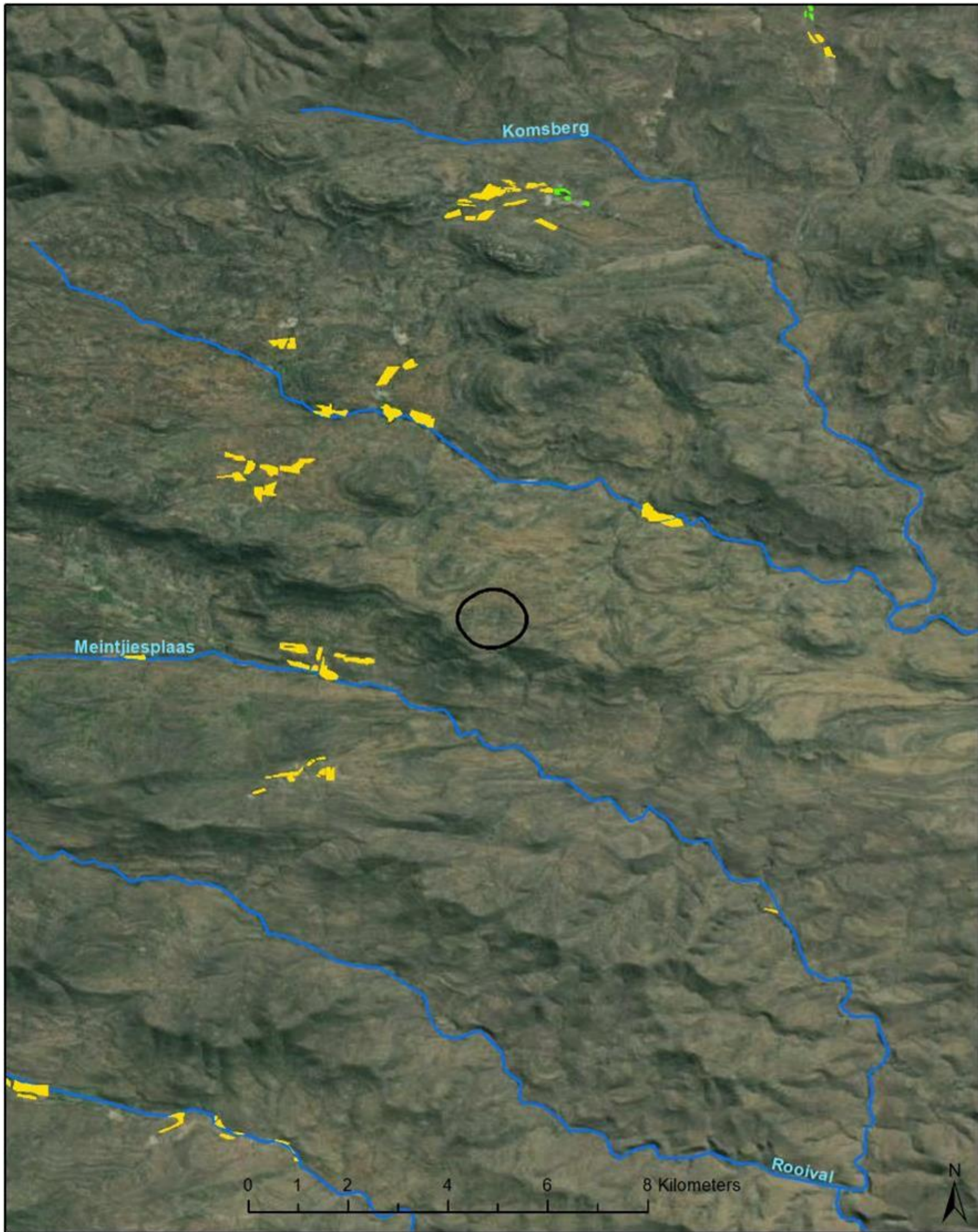



Figure 5.16: Land capability classification of the Great Karoo BESS project assessment zone and surrounding area (data source: DAFF, 2017)



**Legend**

**Field crops**

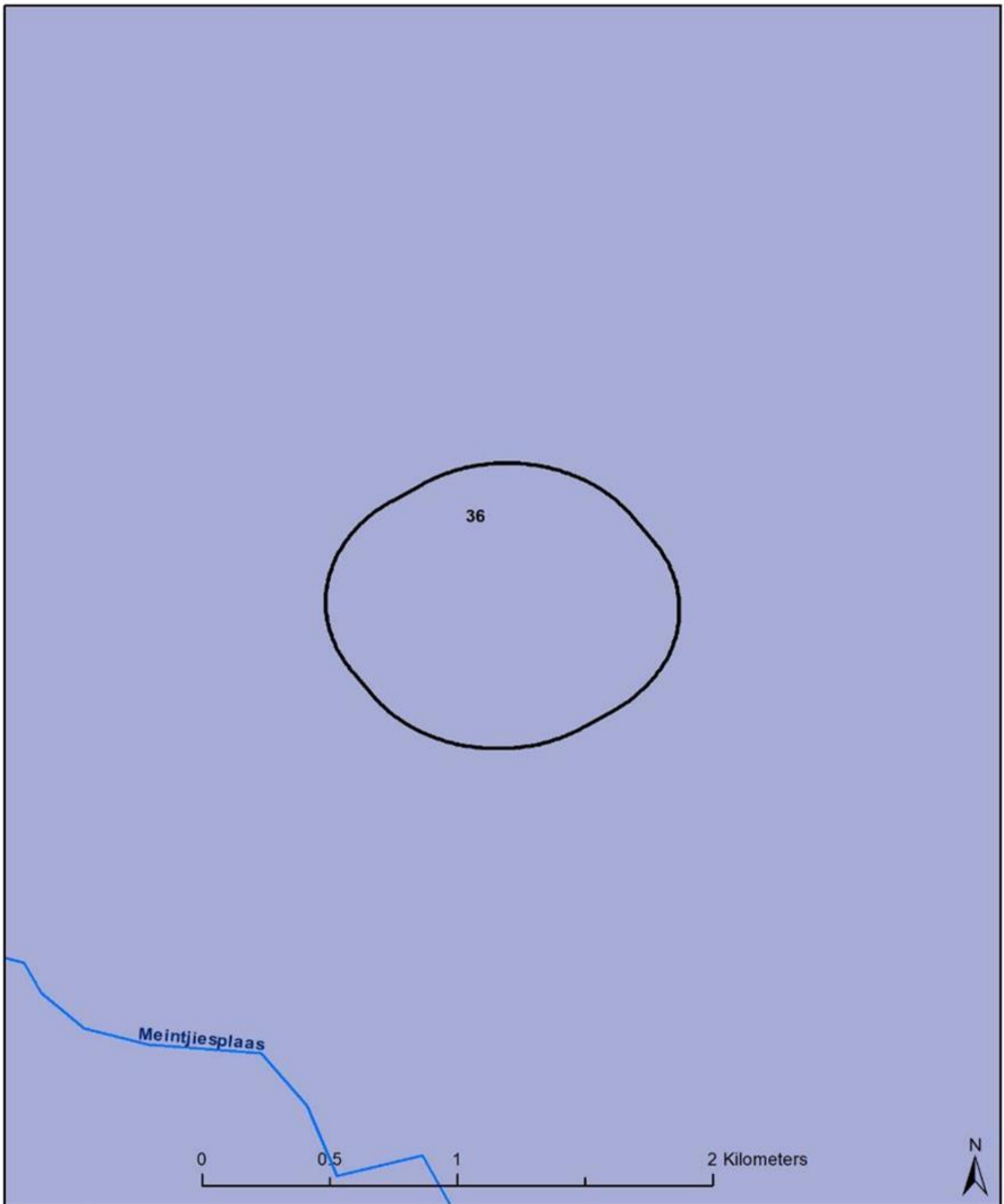
-  Horticulture
-  Rainfed Annual Crop Cultivation / Planted Pastures

 Project assessment zone (104 ha)

 Rivers



Figure 5.17: Location of field crop boundaries in the larger area around the proposed Great Karoo BESS project assessment zone (data source: DAFF, 2019)



**Legend**

**Grazing capacity (ha/LSU)**

36

Project assessment zone (104 ha)

Rivers



**TerraAfrica**  
SOIL. AGRICULTURE. ENVIRONMENT.

Figure 5.18: Grazing capacity in the larger area around the proposed Great Karoo BESS project assessment zone (data source: DAFF, 2019)

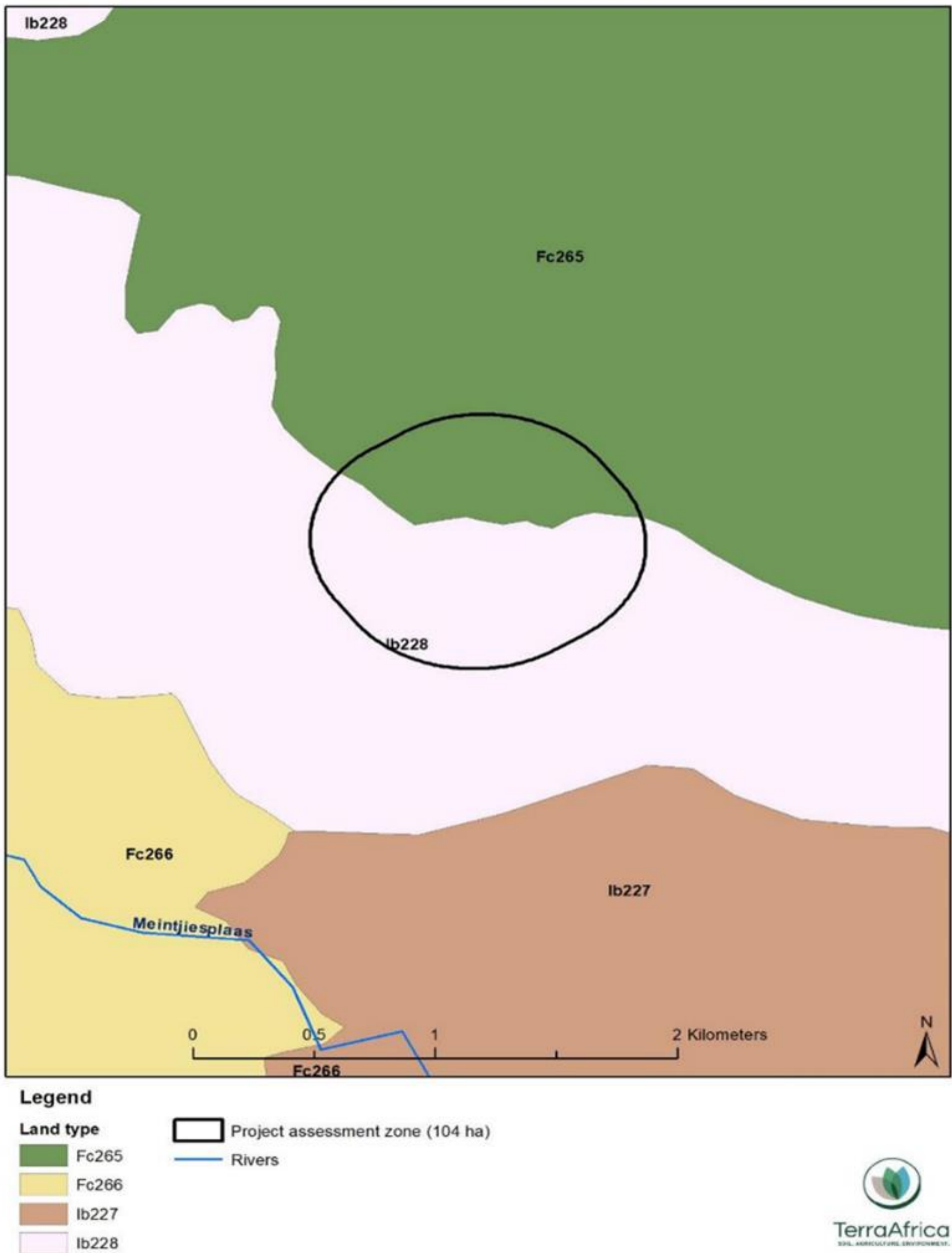


Figure 5.19: Land type classification of the proposed Great Karoo BESS project assessment zone and the surrounding area



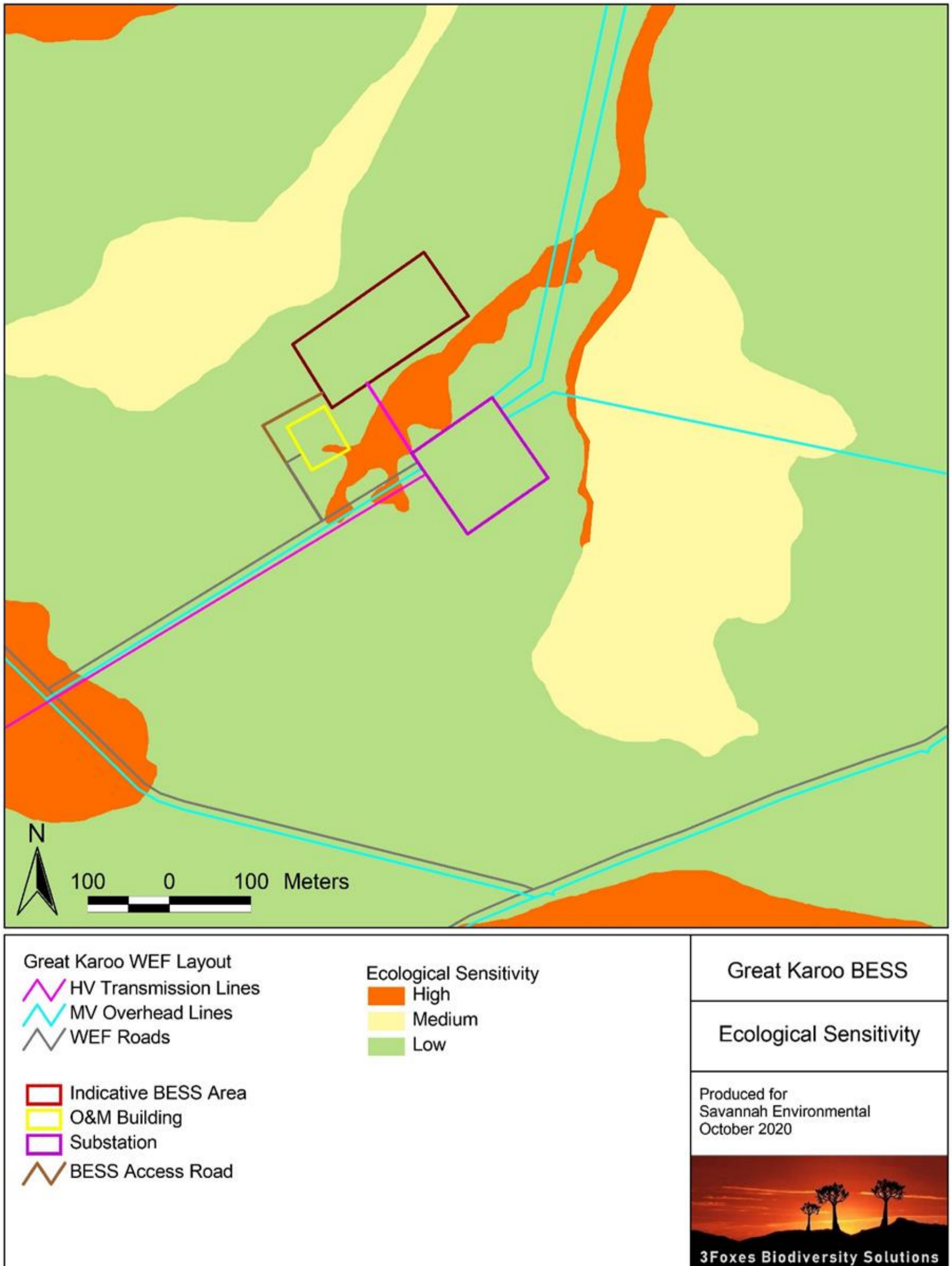


Figure 6.1: Sensitivity map for the Great Karoo BESS 500m assessment region (note 500m assessment region is represented by the entirety of the map).

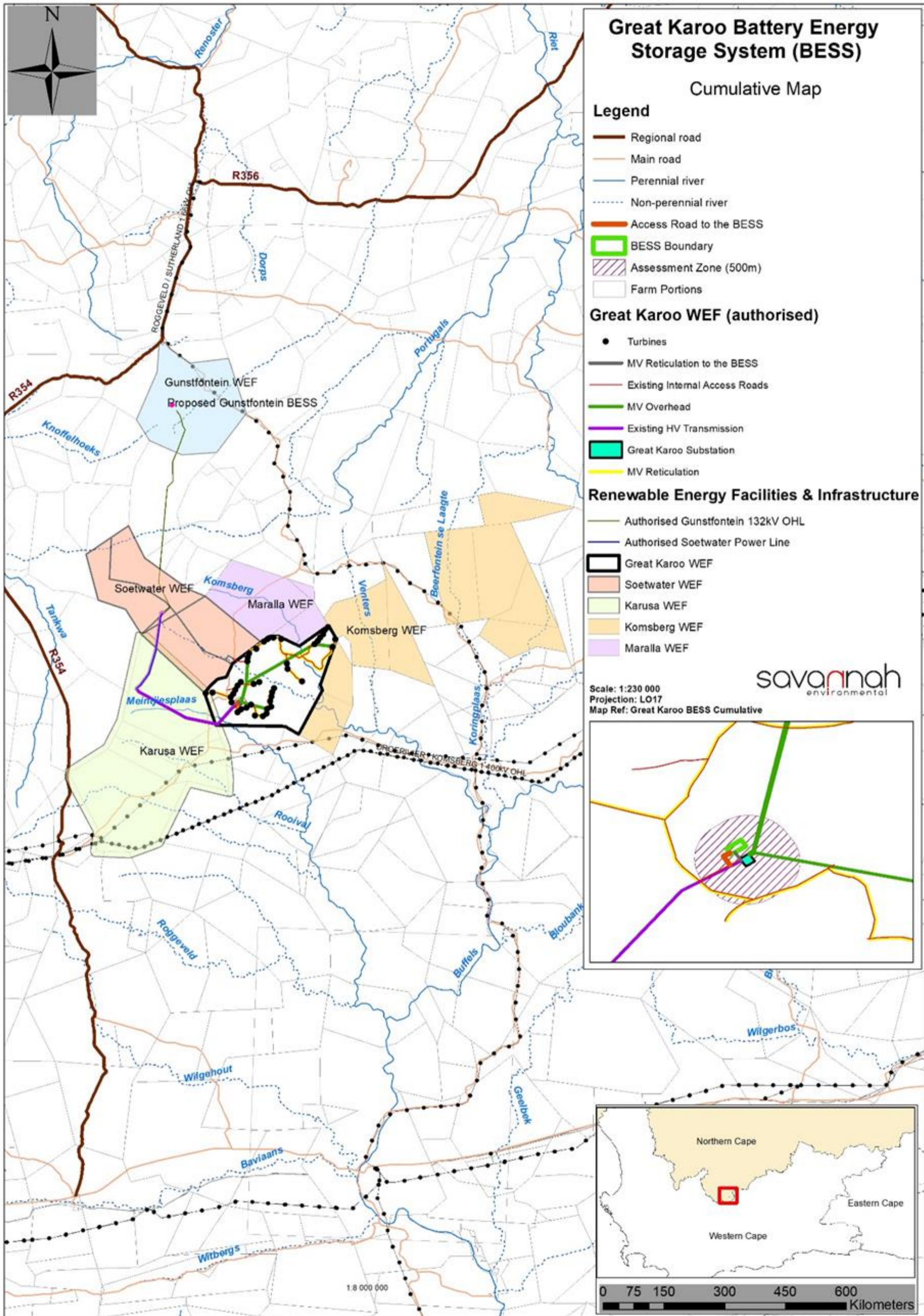


Figure 7.1: Cumulative map for the Great Karoo BESS and associated infrastructure showing electrical infrastructure related to the two BESS projects known to be planned in the area.

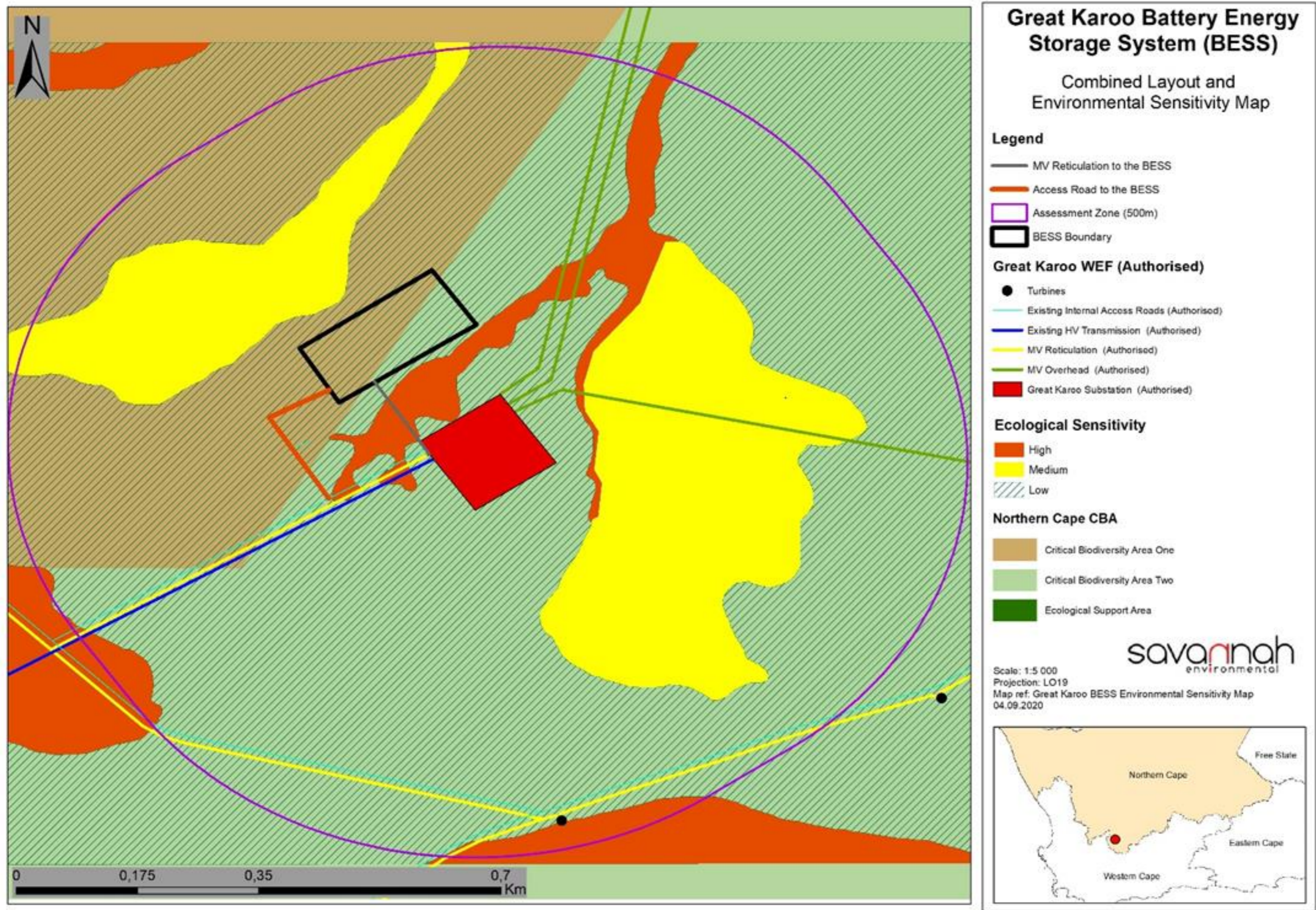


Figure 8.1: Final layout and environmental sensitivity map for the proposed BESS within the 500m assessment zone showing the final layout proposed for approval in this Basic Assessment Report. No heritage features were located within the assessed corridor.