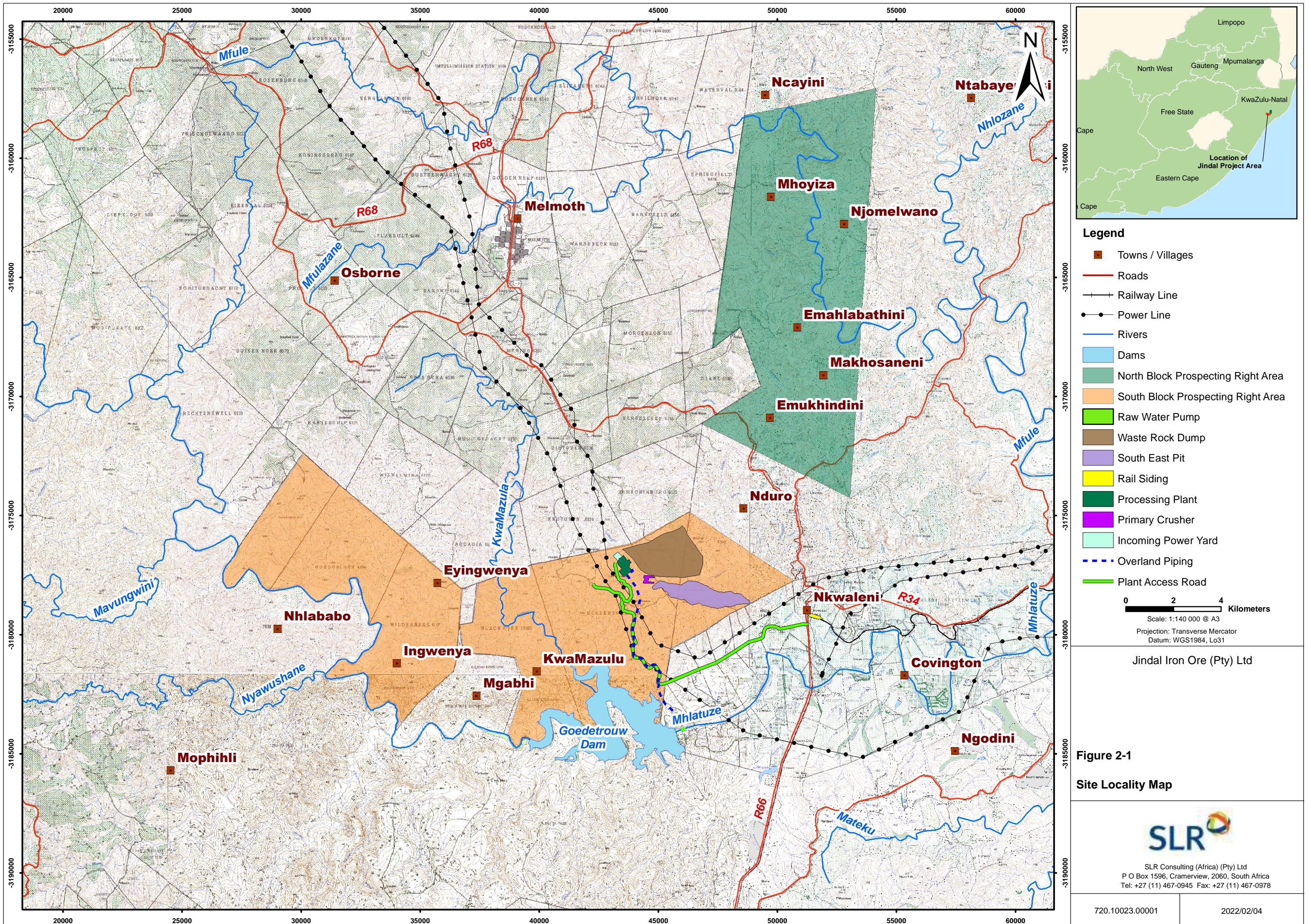
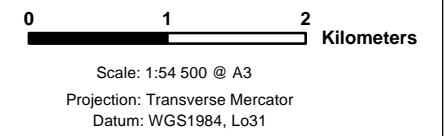
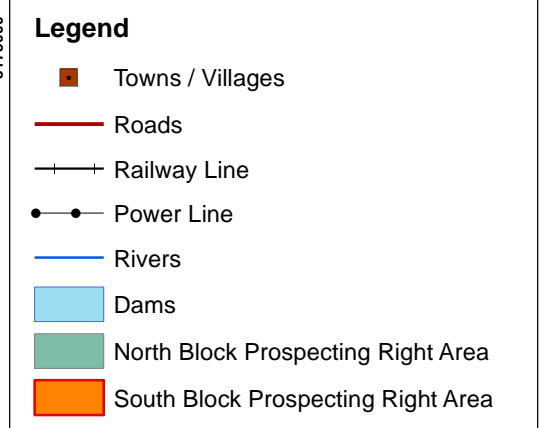
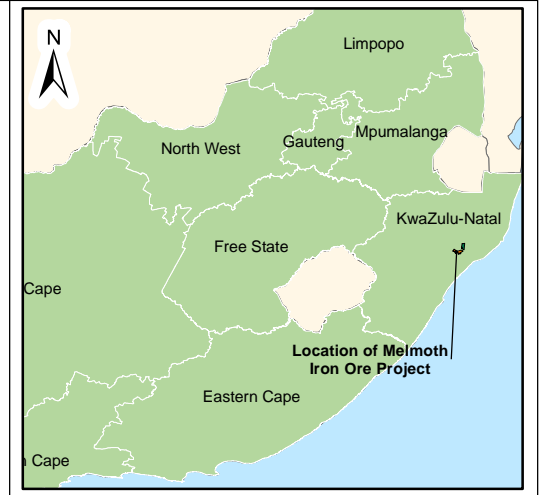
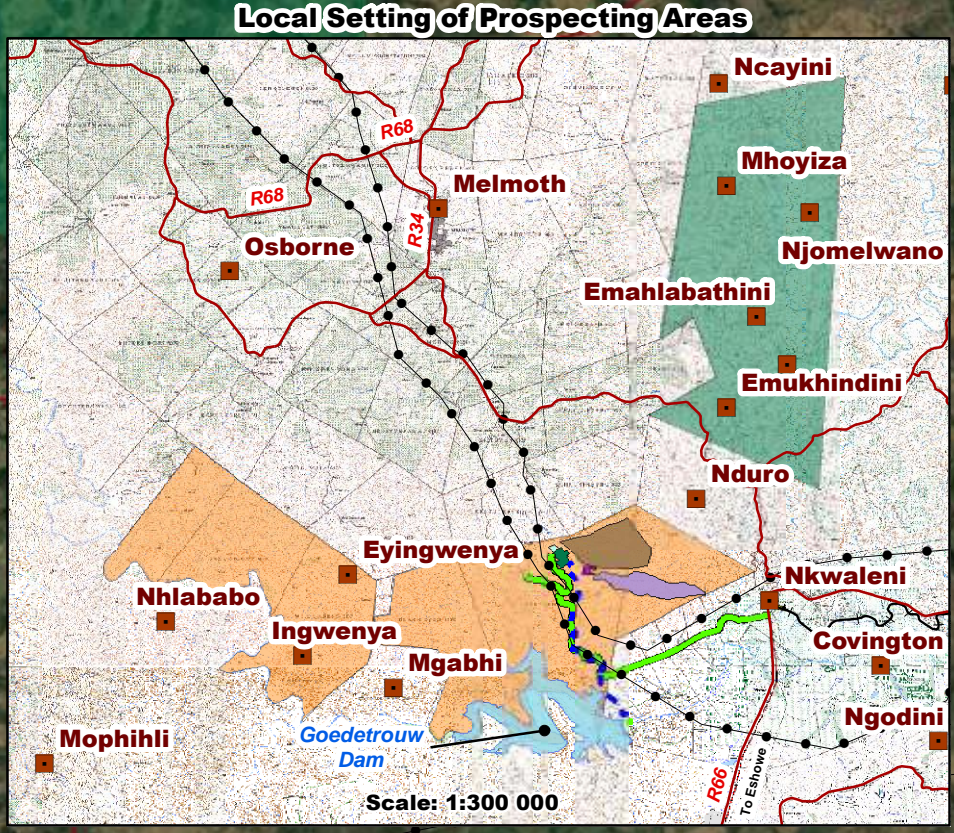
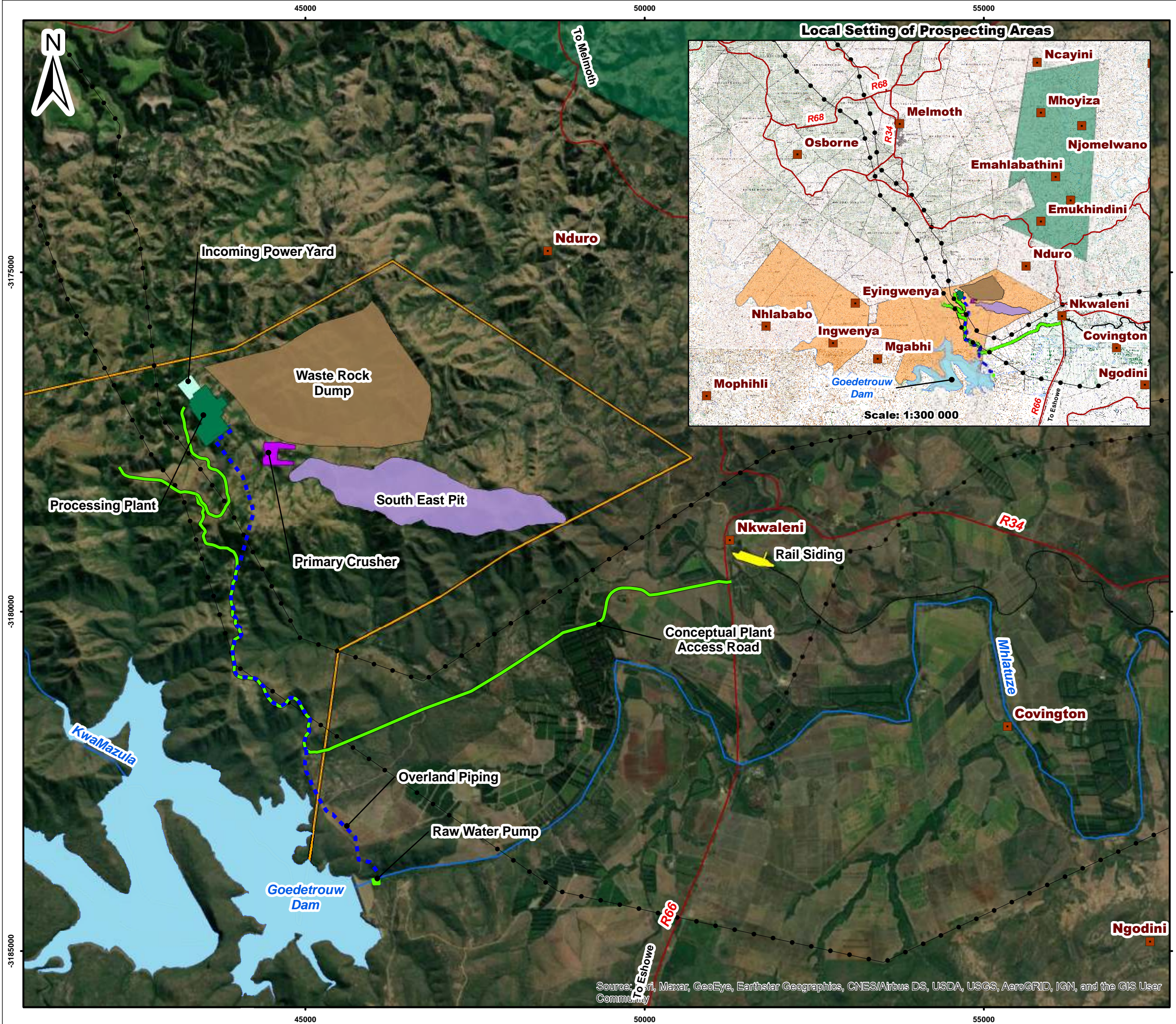


APPENDIX H: A3 MAPS





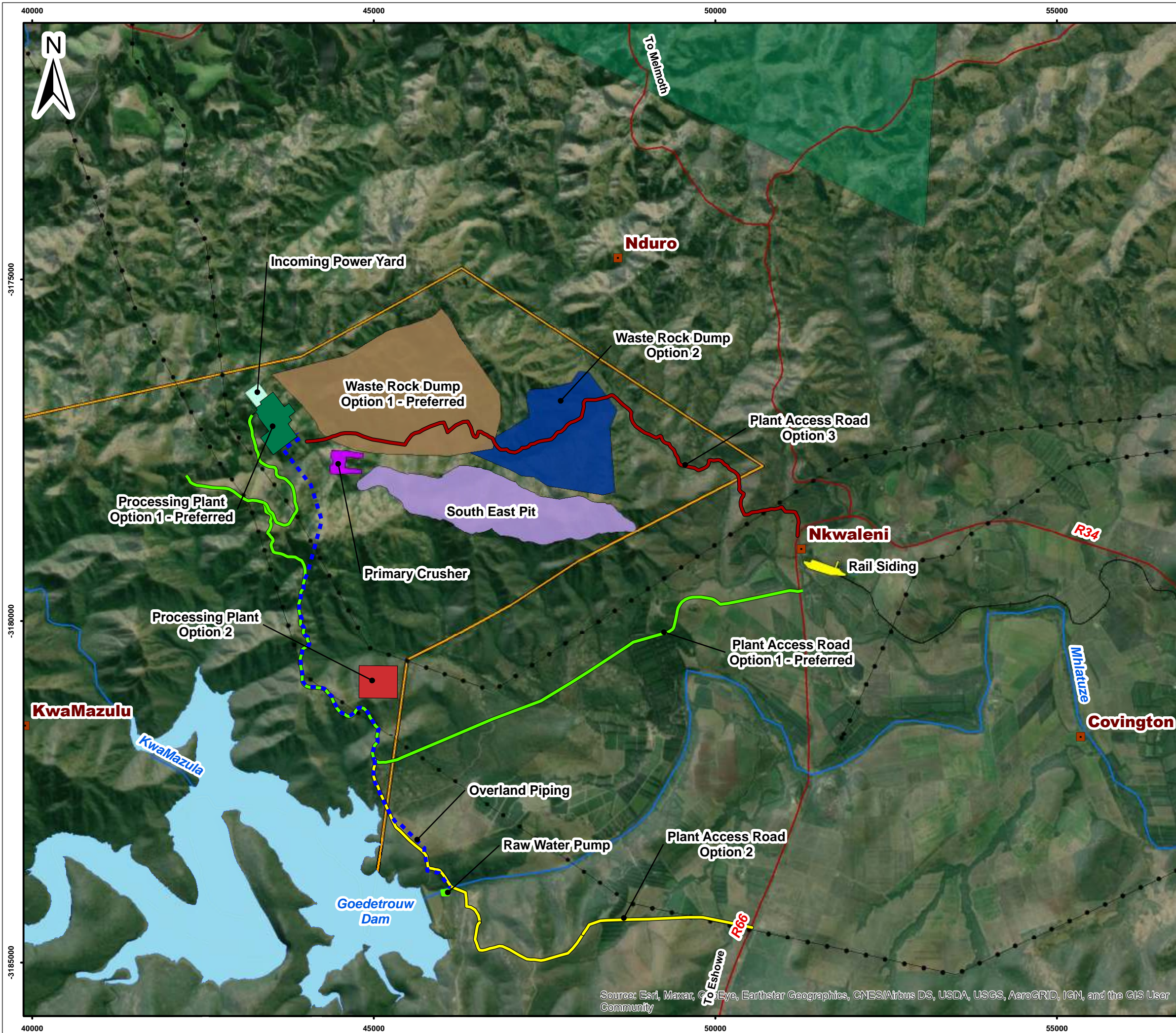
Jindal Iron Ore (Pty) Ltd

Figure 3-2
Jindal Melmoth Iron Ore Project
South Block Proposed Layout

SLR

SLR Consulting (Africa) (Pty) Ltd
 P O Box 1596, Cramerview, 2060, South Africa
 Tel: +27 (11) 467-0945 Fax: +27 (11) 467-0978

Source: Esri, Maxar, GeoEye, Earthstar Geographics, CNES/Airbus DS, USDA, USGS, AeroGRID, IGN, and the GIS User Community



- Legend**
- Towns / Villages
 - Roads
 - Railway Line
 - Power Line
 - Rivers
 - Dams
 - South Block Prospecting Right Area
 - North Block Prospecting Right Area
- Options Considered
- Access Road Option 1 - Preferred
 - Access Road Option 2
 - Access Road Option 3
 - Processing Plant Option 1 - Preferred
 - Processing Plant Option 2
 - Waste Rock Dump Option 1 - Preferred
 - Waste Rock Dump Option 2

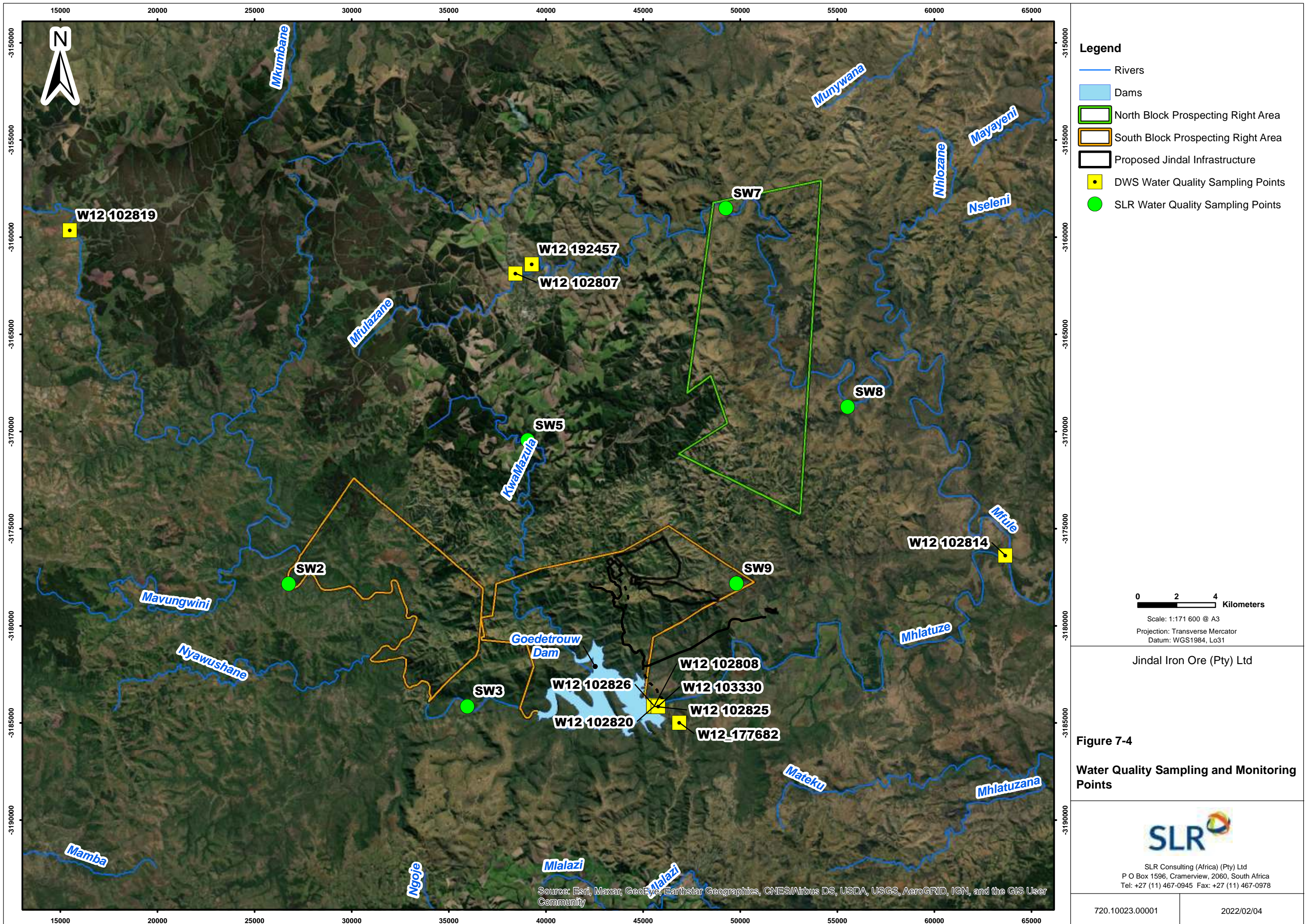
0 1 2 Kilometers
 Scale: 1:54 500 @ A3
 Projection: Transverse Mercator
 Datum: WGS1984, Lo31

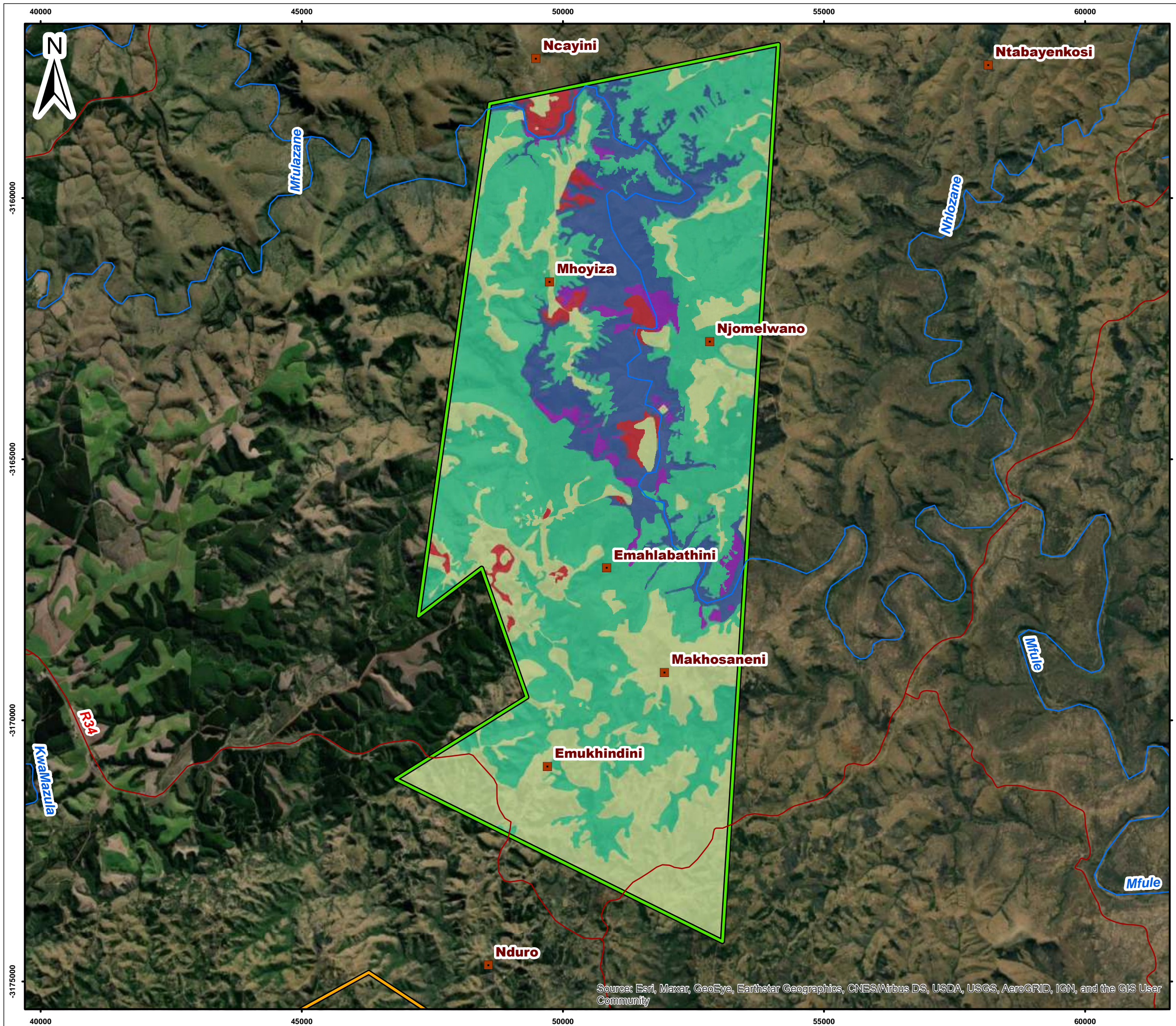
Jindal Iron Ore (Pty) Ltd

Figure 7-1
Alternative Site Layout Options Considered

SLR
 SLR Consulting (Africa) (Pty) Ltd
 P O Box 1596, Cramerville, 2060, South Africa
 Tel: +27 (11) 467-0945 Fax: +27 (11) 467-0978

Source: Esri, Maxar, GeoEye, Earthstar Geographics, CNES/Airbus DS, USDA, USGS, AeroGRID, IGN, and the GIS User Community





Legend

- Towns / Villages
- Roads
- Rivers
- North Block Prospecting Right Area
- South Block Prospecting Right Area

Vegetation Communities

- 6. Ngongoni Veld/Northern Zululand Sourveld Open Savannah
- 7. Scarp Forest /Northern Zululand Sourveld Thicket/Ngongoni Veld Closed Woodland
- 8. Degraded Ngongoni Veld Closed Woodland/Northern Zululand Sourveld Thicket
- 9. Degraded Ngongoni Veld/Northern Zululand Sourveld Open Savannah
- 10. Secondary Open Savannah/Thicket/Closed Woodland

0 1 2 Kilometers
 Scale: 1:70 800 @ A3
 Projection: Transverse Mercator
 Datum: WGS1984, Lo31

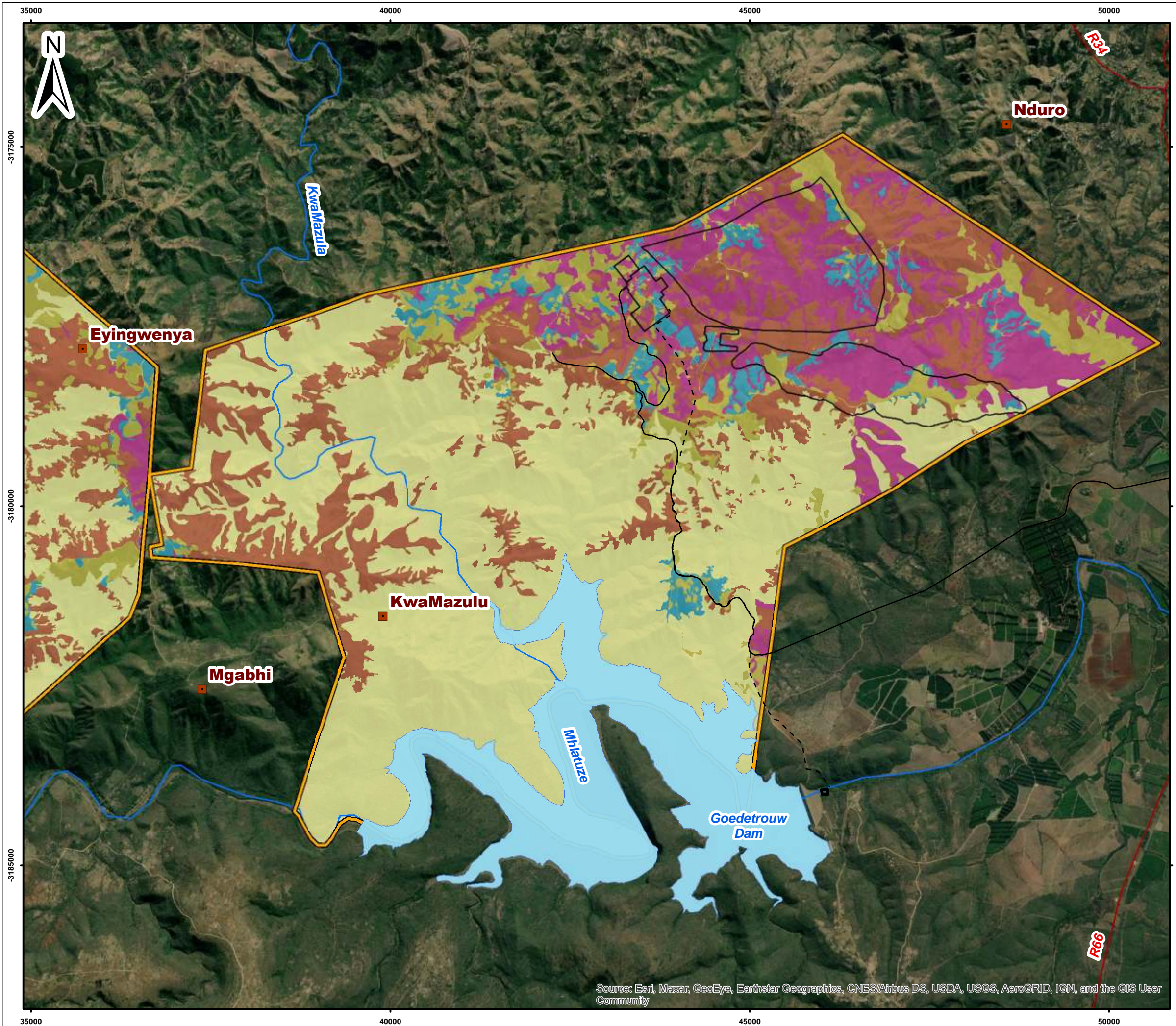
Jindal Iron Ore (Pty) Ltd

Figure 7-5
Map Showing the Various Terrestrial Vegetation Communities and Habitat Types Identified Within the North Block (Source: EcoPulse, 2021)



SLR Consulting (Africa) (Pty) Ltd
 P O Box 1596, Cramerview, 2060, South Africa
 Tel: +27 (11) 467-0945 Fax: +27 (11) 467-0978

Source: Esri, Maxar, GeoEye, Earthstar Geographics, CNES/Airbus DS, USDA, USGS, AeroGRID, IGN, and the GIS User Community



- Legend**
- Towns / Villages
 - Roads
 - Rivers
 - Dams
 - South Block Prospecting Right Area
 - Proposed Jindal Infrastructure
- Vegetation Communities**
1. Ngongoni Veld/Eastern Valley Bushveld Open Savannah
 2. Eastern Valley Bushveld Thicket/Ngongoni Veld Closed Woodland
 3. Degraded Ngongoni Veld/Eastern Valley Bushveld Open Savannah
 4. Degraded Eastern Valley Bushveld Thicket/Ngongoni Veld Closed Woodland
 5. Secondary Open Savannah/Thicket/Closed Woodland

0 0,5 1 Kilometers
 Scale: 1:51 500 @ A3
 Projection: Transverse Mercator
 Datum: WGS1984, Lo31

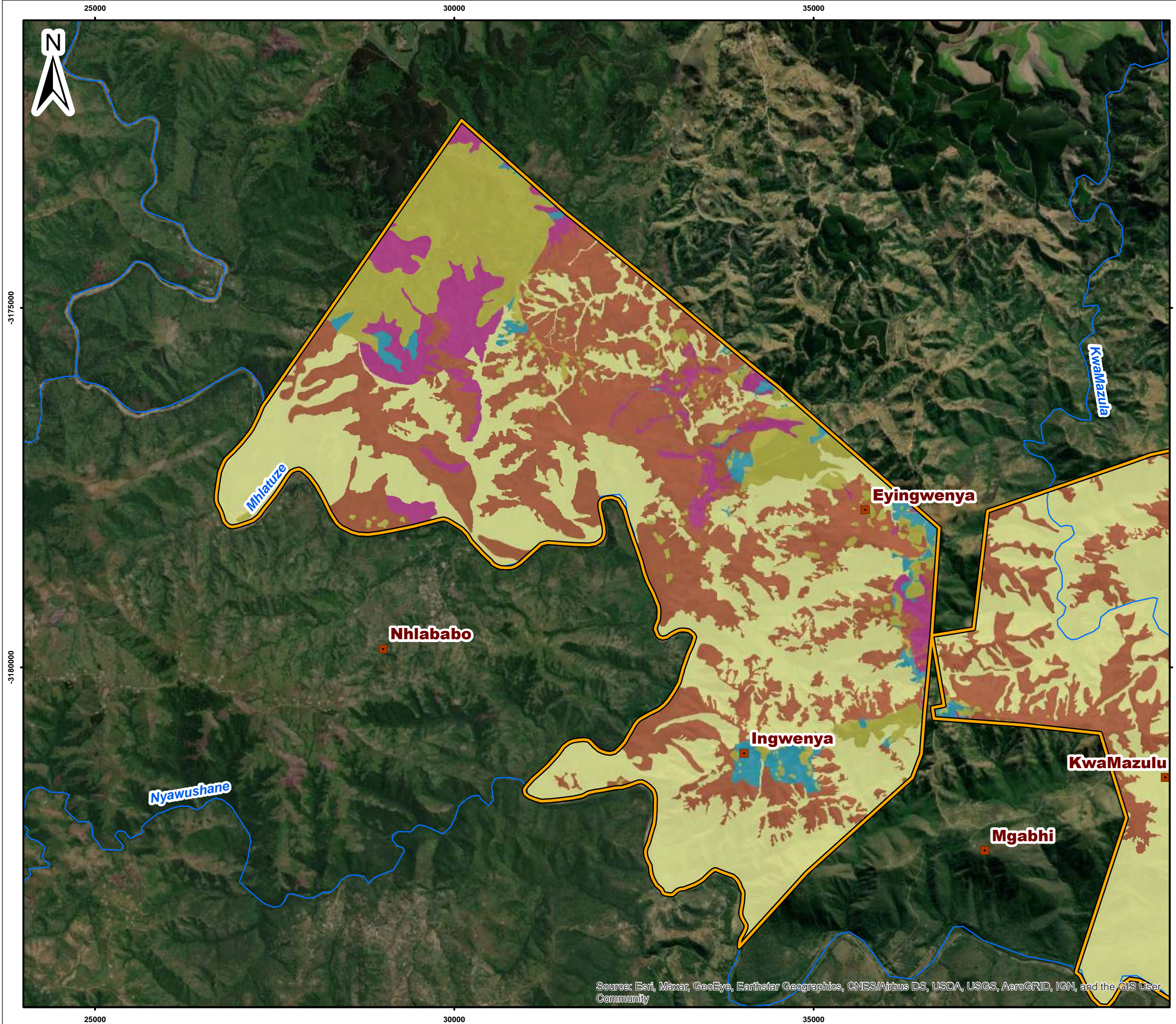
Jindal Iron Ore (Pty) Ltd

Figure 7-6
Map Showing the Various Terrestrial Vegetation Communities and Habitat Types Identified Within the South-Central and South-Eastern Blocks (Source: EcoPulse, 2021)



SLR Consulting (Africa) (Pty) Ltd
 P O Box 1596, Cramerview, 2060, South Africa
 Tel: +27 (11) 467-0945 Fax: +27 (11) 467-0978

Source: Esri, Maxar, GeoEye, Earthstar Geographics, CNES/Airbus DS, USDA, USGS, AeroGRID, IGN, and the GIS User Community



- Legend**
- Towns / Villages
 - Roads
 - Rivers
 - South Block Prospecting Right Area
- Vegetation Communities**
- 1. Ngongoni Veld/Eastern Valley Bushveld Open Savannah
 - 2. Eastern Valley Bushveld Thicket/Ngongoni Veld Closed Woodland
 - 3. Degraded Ngongoni Veld/Eastern Valley Bushveld Open Savannah
 - 4. Degraded Eastern Valley Bushveld Thicket/Ngongoni Veld Closed Woodland
 - 5. Secondary Open Savannah/Thicket/Closed Woodland

0 0,5 1 Kilometers
 Scale: 1:51 500 @ A3
 Projection: Transverse Mercator
 Datum: WGS1984, Lo31

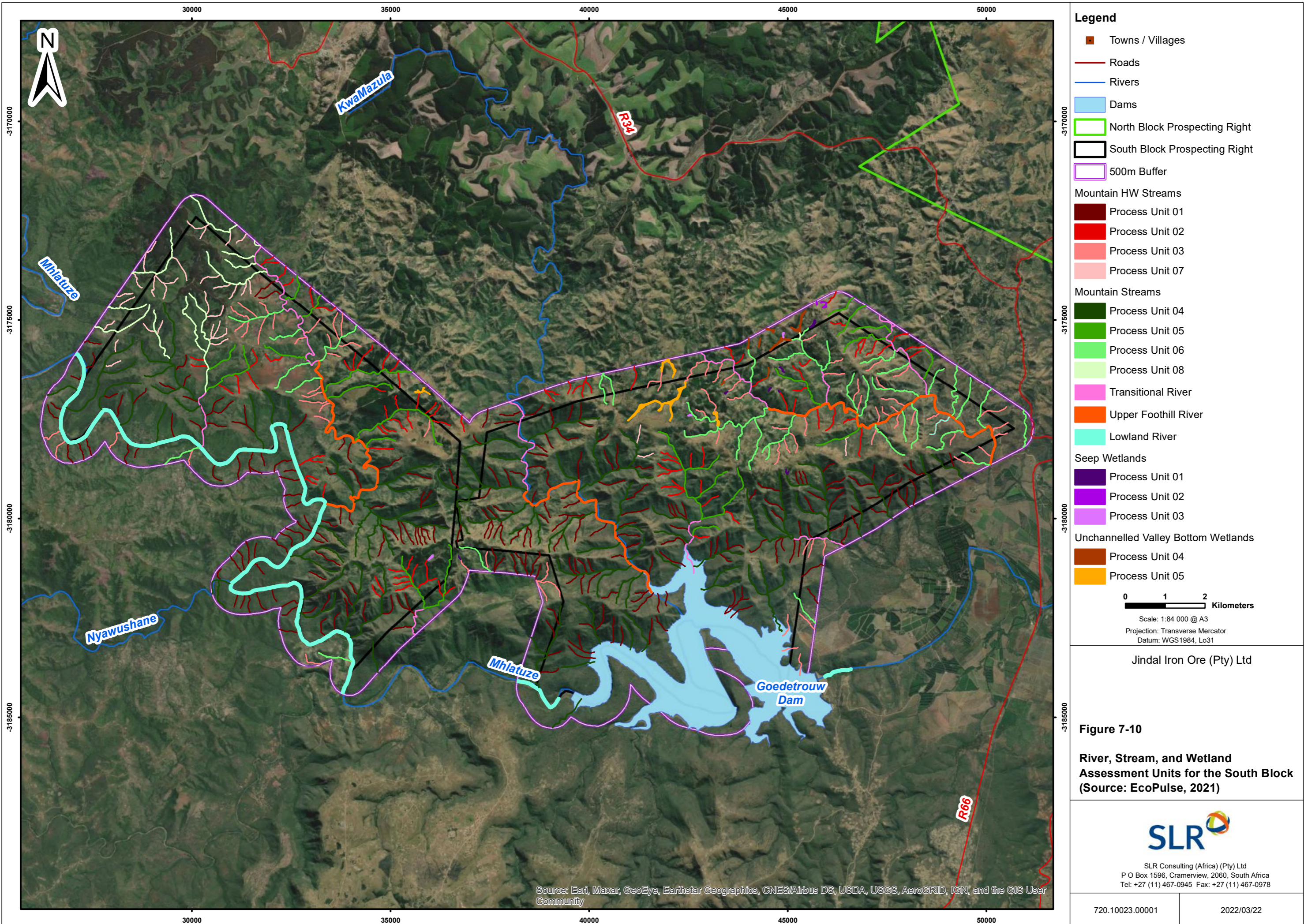
Jindal Iron Ore (Pty) Ltd

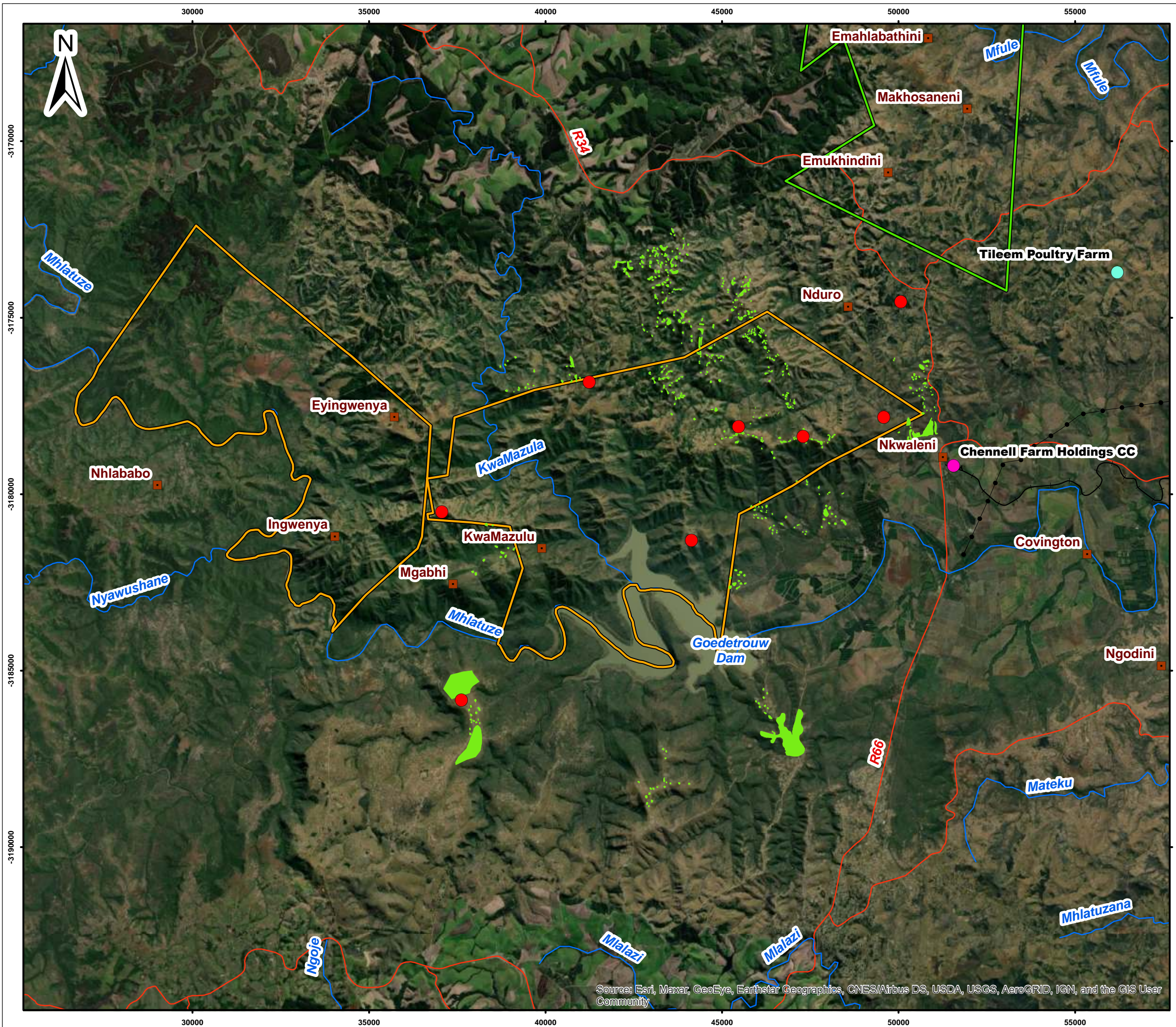
Figure 7-7
Map Showing the Various Terrestrial Vegetation Communities and Habitat Types Identified Within the South-Western Block (Source: EcoPulse, 2021)



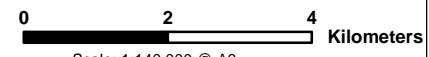
SLR Consulting (Africa) (Pty) Ltd
 P O Box 1596, Cramerview, 2060, South Africa
 Tel: +27 (11) 467-0945 Fax: +27 (11) 467-0978

Source: Esri, Maxar, GeoEye, Earthstar Geographics, CNES/Airbus DS, USDA, USGS, AeroGRID, IGN, and the GIS User Community





- Legend**
- Towns / Villages
 - Roads
 - +— Railway Line
 - Power Line
 - Rivers
 - ▭ South Block Prospecting Right Area
 - ▭ North Block Prospecting Right Area
- Potential Sensitive Receptors
- Homesteads
 - Chennell Farm Holdings CC
 - Tileem Poultry Farm
 - Schools



Scale: 1:140 000 @ A3
 Projection: Transverse Mercator
 Datum: WGS1984, Lo31

Jindal Iron Ore (Pty) Ltd

Figure 7-16
Potential Sensitive Receptors

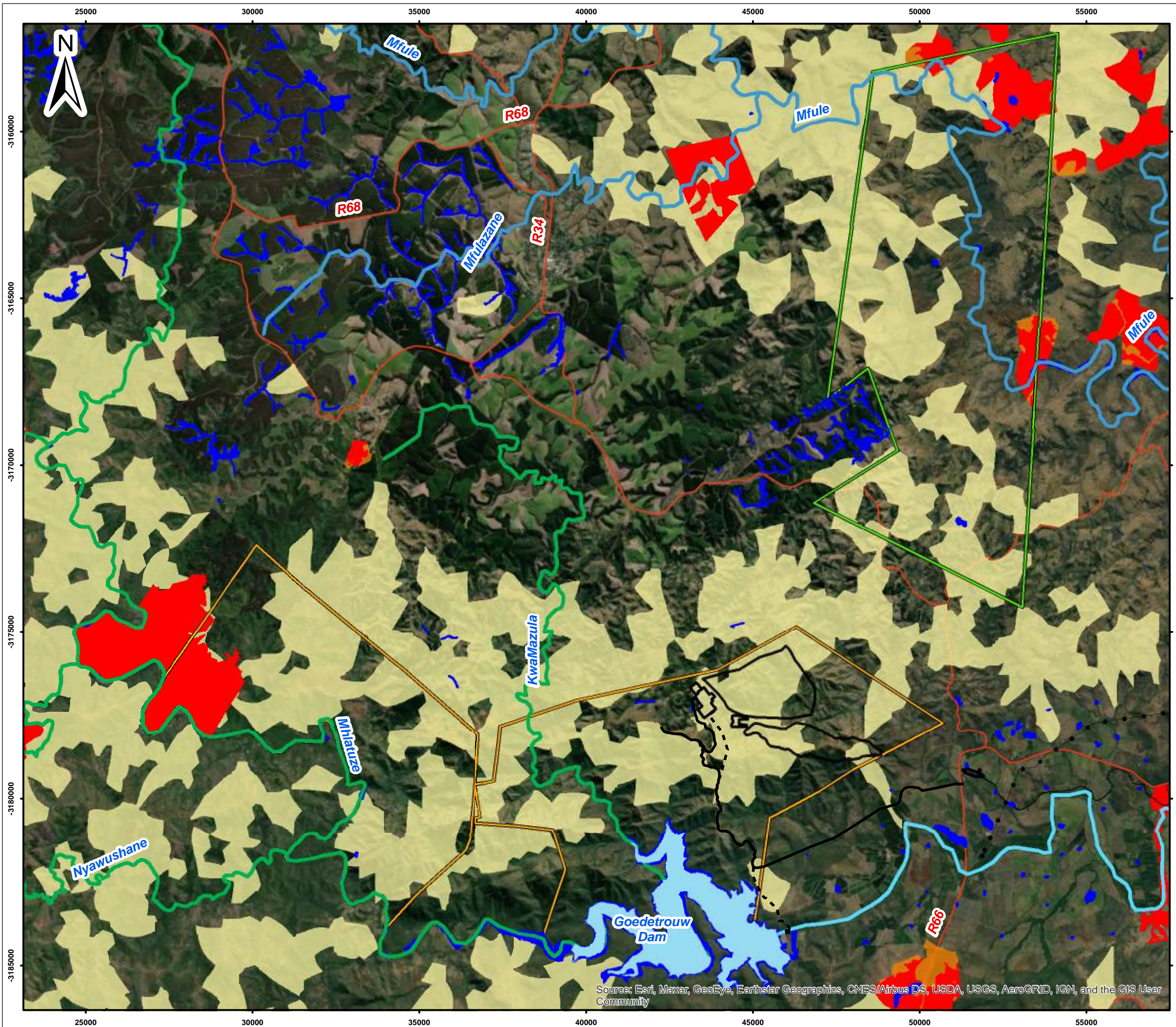


SLR Consulting (Africa) (Pty) Ltd
 P O Box 1596, Cramerview, 2060, South Africa
 Tel: +27 (11) 467-0945 Fax: +27 (11) 467-0978

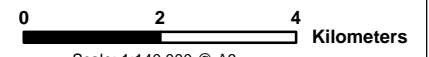
720.10023.00001

2022/02/04

Source: Esri, Maxar, GeoEye, Earthstar Geographics, CNES/Airbus DS, USDA, USGS, AeroGRID, IGN, and the GIS User Community



- Legend**
- Roads
 - +— Railway Line
 - Power Line
 - Rivers
 - Dams
 - North Block Prospecting Right Area
 - South Block Prospecting Right Area
 - Proposed Jindal Infrastructure
 - NFEPA Wetlands
- NFEPA Rivers**
- CLASS A: Unmodified, Natural
 - CLASS B: Largely Natural
 - CLASS C: Moderately Modified
- Critical Biodiversity Areas**
- Irreplaceable
 - Area 1 Mandatory
 - Area 2 Mandatory
 - Area 3 Optimal



Scale: 1:140 000 @ A3
 Projection: Transverse Mercator
 Datum: WGS1984, Lo31

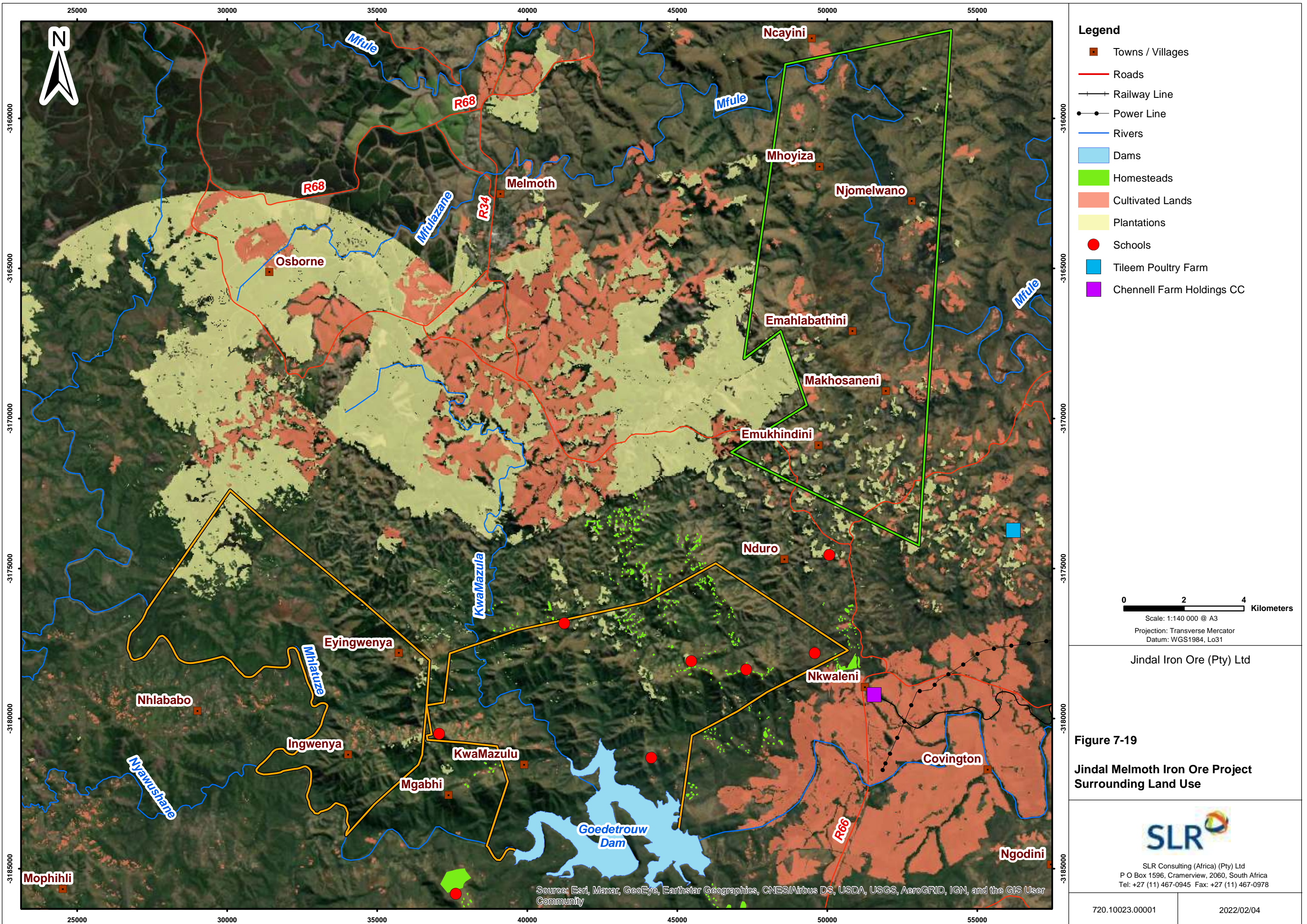
Jindal Iron Ore (Pty) Ltd

Figure 7-20
Environmental Sensitivity



SLR Consulting (Africa) (Pty) Ltd
 P O Box 1596, Cramerview, 2060, South Africa
 Tel: +27 (11) 467-0945 Fax: +27 (11) 467-0978

Source: Esri, Maxar, GeoEye, Earthstar Geographics, CNES/Airbus DS, USDA, USGS, AeroGRID, IGN, and the GIS User Community



- Legend**
- Towns / Villages
 - Roads
 - +— Railway Line
 - Power Line
 - Rivers
 - Dams
 - Homesteads
 - Cultivated Lands
 - Plantations
 - Schools
 - Tileem Poultry Farm
 - Chennell Farm Holdings CC

0 2 4 Kilometers
 Scale: 1:140 000 @ A3
 Projection: Transverse Mercator
 Datum: WGS1984, L031

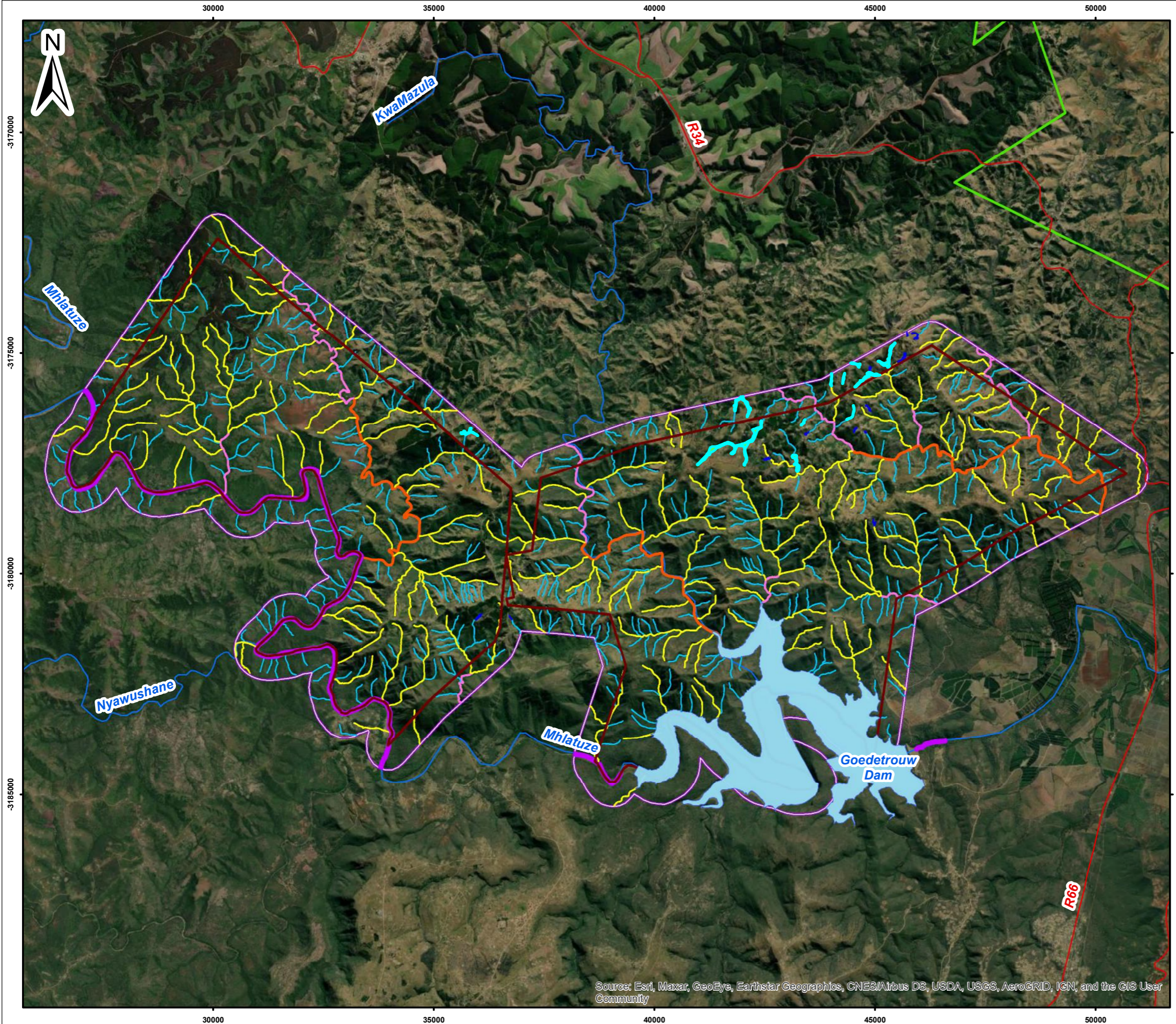
Jindal Iron Ore (Pty) Ltd

Figure 7-19
Jindal Melmoth Iron Ore Project
Surrounding Land Use



SLR Consulting (Africa) (Pty) Ltd
 P O Box 1596, Cramerview, 2060, South Africa
 Tel: +27 (11) 467-0945 Fax: +27 (11) 467-0978

Source: Esri, Maxar, GeoEye, Earthstar Geographics, CNES/Airbus DS, USDA, USGS, AeroGRID, IGN, and the GIS User Community



- Legend**
- Towns / Villages
 - Roads
 - Rivers
 - Dams
 - North Block Prospecting Right
 - South Block Prospecting Right
 - 500m Buffer
- Wetlands**
- Seep
 - Unchanelled Valley Bottom
- South Block Rivers**
- Lowland River
 - Mountain Headwater Stream
 - Mountain Stream
 - Transitional River
 - Upper Foothill River

0 1 2 Kilometers
 Scale: 1:84 000 @ A3
 Projection: Transverse Mercator
 Datum: WGS1984, Lo31

Jindal Iron Ore (Pty) Ltd

Figure 7-9
Watercourse Delineation and Classification Map for the South Block
 (Source: EcoPulse, 2021)



SLR Consulting (Africa) (Pty) Ltd
 P O Box 1596, Cramerview, 2060, South Africa
 Tel: +27 (11) 467-0945 Fax: +27 (11) 467-0978

Source: Esri, Maxar, GeoEye, Earthstar Geographics, CNES/Airbus DS, USDA, USGS, AeroGRID, IGN, and the GIS User Community

AFRICAN OFFICES

South Africa

CAPE TOWN

T: +27 21 461 1118

JOHANNESBURG

T: +27 11 467 0945

DURBAN

T: +27 11 467 0945

Ghana

ACCRA

T: +233 24 243 9716

Namibia

WINDHOEK

T: + 264 61 231 287