

BACKGROUND INFORMATION DOCUMENT

BASIC ASSESSMENT PROCESS FOR THE PROPOSED EASTBURY DRIVE TRUNK SEWER PIPE UPGRADE, MOUNT EDGECOMBE,
ETHEKWINI MUNICIPALITY

INVITATION TO REGISTER AND COMMENT

AURECON REF No: 112774

PURPOSE OF THIS DOCUMENT

The purpose of this Background Information Document (BID) is to provide stakeholders with the opportunity to register as interested and affected parties in the Environmental Authorisation process and to obtain their initial comments on the proposed project.

The purpose of the application process is to identify and assess potential changes in impacts and to recommend measures to avoid or reduce negative impacts and enhance positive impacts. The decision-making authority is the KwaZulu-Natal Department of Economic Development, Tourism and Environmental Affairs (EDTEA) in terms of the Environmental Impact Assessment Regulations, 2014.

Please register yourself as an interested and affected party and submit your comments on the proposed project.

Either complete a Response Form, write a letter, call or e-mail the public participation office.

Public Participation office

Yolandi Meyer
Aurecon South Africa (Pty) Ltd
Tel: (031) 575 5500

Email:
Yolandi.Meyer@aurecongroup.com

YOUR COMMENT IS IMPORTANT

Your comment on any aspect of the proposed project, the proposed amendment of the environmental authorisation, its public participation process and issues that need to be investigated, will help focus the process and assist the authorities in their decision-making.

Background

eThekweni Municipality Water and Sanitation Unit Water appointed Aurecon South Africa (Pty) Ltd to provide environmental services for the Basic Assessment (BA) for the proposed Eastbury Drive Trunk Sewer Pipe Upgrade, Mount Edgecombe, EthekeWini Municipality, KwaZulu-Natal. The pipe proposed to be replaced is located at Erf 607 of the Farm Mount Edgecombe No. 0217 and Portion 359 (of 358) of the Farm LOT 22 No.1543 within the Mount Edgecombe Old Mill Industrial Park. The site can be accessed from Marshall Drive Starting Point (29°42'08.62"S; 31°02'07.28"E) and End Point (29°42'11.68"S; 31°02'05.06"E).

The Comubia Precinct development located in the northern Part of the eThekweni Municipality entails the construction of residential, industrial and commercial units. Due to the catchment topography some of the expected sewer flow generation will collect towards the kwaMashu WWTW. The Eastbury Drive Trunk Sewer (EDTS), in Mount Edgecombe, transports sewage generated from the existing catchment to kwaMashu WWTW. An investigation into the EDTS has indicated that the pipe at Erf 607 of the Farm Mount Edgecombe No. 0217 and Portion 359 (of 358) of the Farm LOT 22 No.1543 will lack capacity when catering for the extra flow from the Comubia development. To service the extra flow from Comubia Precinct development the pipe will need to be upgraded.

The project entails replacing an existing 150m long, 300mm diameter sewer pipe with a 450mm diameter pipe in order to accommodate a projected increase in flow volume. The current pipe has a capacity of 18.1Litres/sec while the total flow expected will be 41.2 Litres/sec.

Legal Requirements

Basic Assessment

A Basic Assessment will be required for the proposed activity. The EIA Regulations (Government Notice No. R983 of 2014) lists activities that may not commence without a Basic Assessment process and environmental authorisation from the competent authority, in this case the KwaZulu-Natal

BACKGROUND INFORMATION DOCUMENT

BASIC ASSESSMENT PROCESS FOR THE PROPOSED EASTBURY DRIVE TRUNK SEWER PIPE UPGRADE, MOUNT EDGECOMBE,
ETHEKWINI MUNICIPALITY
INVITATION TO REGISTER AND COMMENT
AURECON REF No: 112774

BACKGROUND INFORMATION DOCUMENT

Department of Economic Development, Tourism and Environmental Affairs (EDTEA). The following listed activity will be relevant for the proposed substation and saltwater pumping system:

GN 983 of 2014, Activity 19: “The infilling or depositing of any material of more than 5 cubic metres into, or the dredging, excavation, removal or moving of soil, sand, shells, shell grit, pebbles or rocks of more than 5 cubic metres from-

- (i) a watercourse;

What is a Basic Assessment?

A BA is a short environmental impact assessment process used to identify and assess potential negative and positive consequences of a proposed project and recommend ways to enhance positive impacts and to avoid or reduce negative impacts. The BA process will include:

- a) Stakeholder engagement;
- b) Assessment of current site conditions;
- c) A description of the proposed activity;
- d) Description of the environment which may be affected;
- e) Description of the need and desirability of the proposed activity and identification of alternatives.
- f) Description and assessment of the significance of environmental impacts

Authority and stakeholder comment incorporation into documentation will occur during the early Basic Assessment process and when the Draft Basic Assessment Report is provided for public comment.

Authority decision-making process and a public appeal opportunity will occur after this phase.

Process to be followed

The BA process as per the Environmental Impact Assessment Regulations 2014 is to be undertaken for this project. During this process it is usual to consult with:

- Relevant authorities at various levels;
- Relevant stakeholders, including non-governmental organisations and other citizens' groups;
- The applicant; and
- The public at large.

BACKGROUND INFORMATION DOCUMENT

BASIC ASSESSMENT PROCESS FOR THE PROPOSED EASTBURY DRIVE TRUNK SEWER PIPE UPGRADE, MOUNT EDGECOMBE,
ETHEKWINI MUNICIPALITY
INVITATION TO REGISTER AND COMMENT
AURECON REF No: 112774

BACKGROUND INFORMATION DOCUMENT

The following activities will be utilised to achieve the aforementioned objectives:

- Advertising on-site and in local newspapers;
- Supplying all affected parties with the opportunity to comment and register; and
- Interested and Affected Party (I&AP) opportunity to comment of the Draft BA Report (BAR)

prior to submission.

Once the authorisation has been received all registered I&APs will be informed of the authorisation in writing.

Your role in the BA process

You have the right, as an interested or affected party, to submit comments on the environmental implications of the proposed projects and to comment on the draft BA Report. This report will be made available at the following website and notices will be sent to I&APs when it is available for comments <http://www.aurecongroup.com/en/public-participation.aspx>

The following activities will take place to achieve the aforementioned objectives:

- Advertising on-site and in local newspapers;
- Supplying all affected parties with the opportunity to comment and register; and
- Interested and Affected Party (I&AP) opportunity to comment of the draft BA and BA Report prior to submission to the decision-making authorities. You will be informed when these reports will be provided for comment on the following website:

**Please note that some project details
may change as engineering
investigations proceed.**

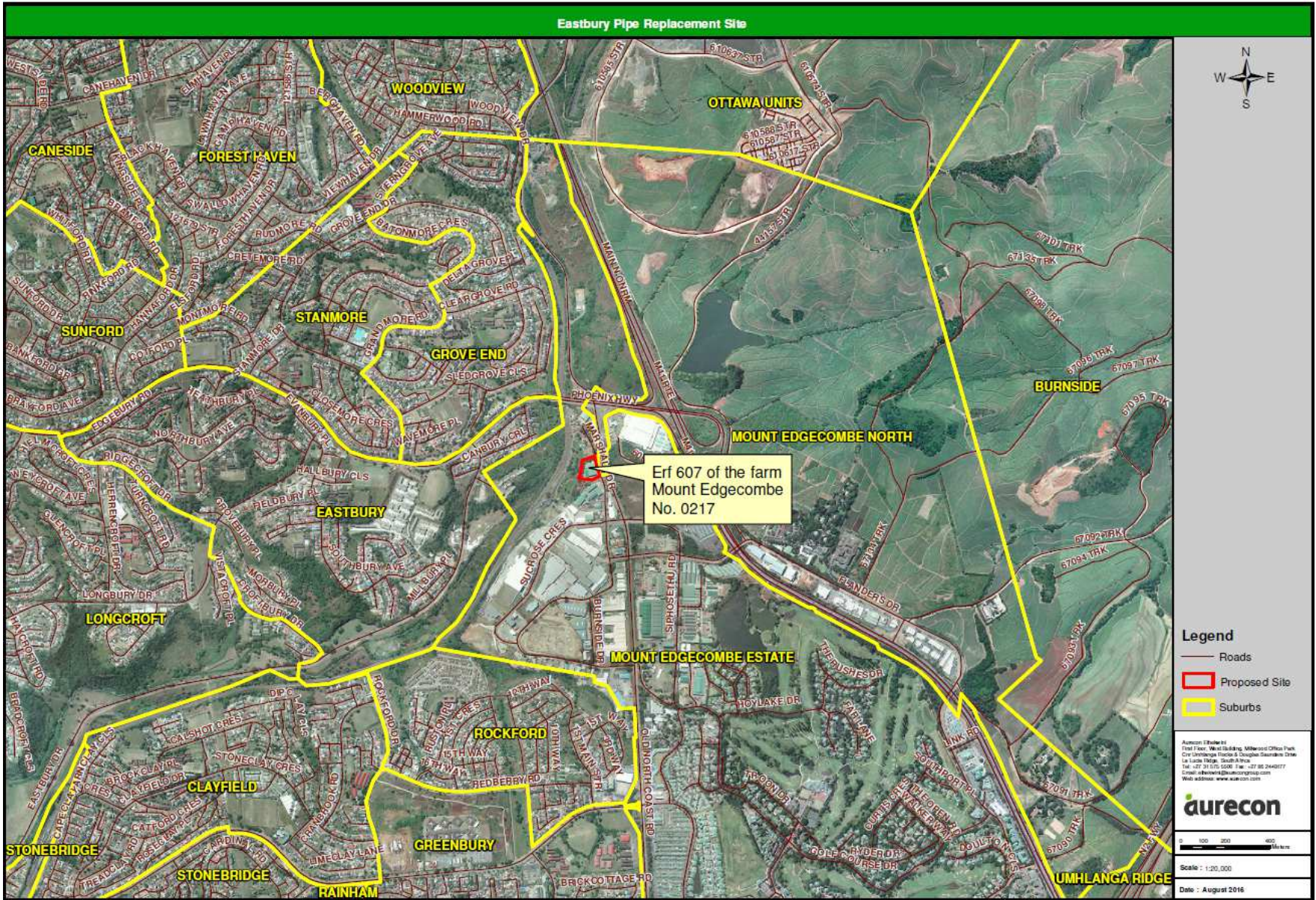


Figure 1: Proposed project details

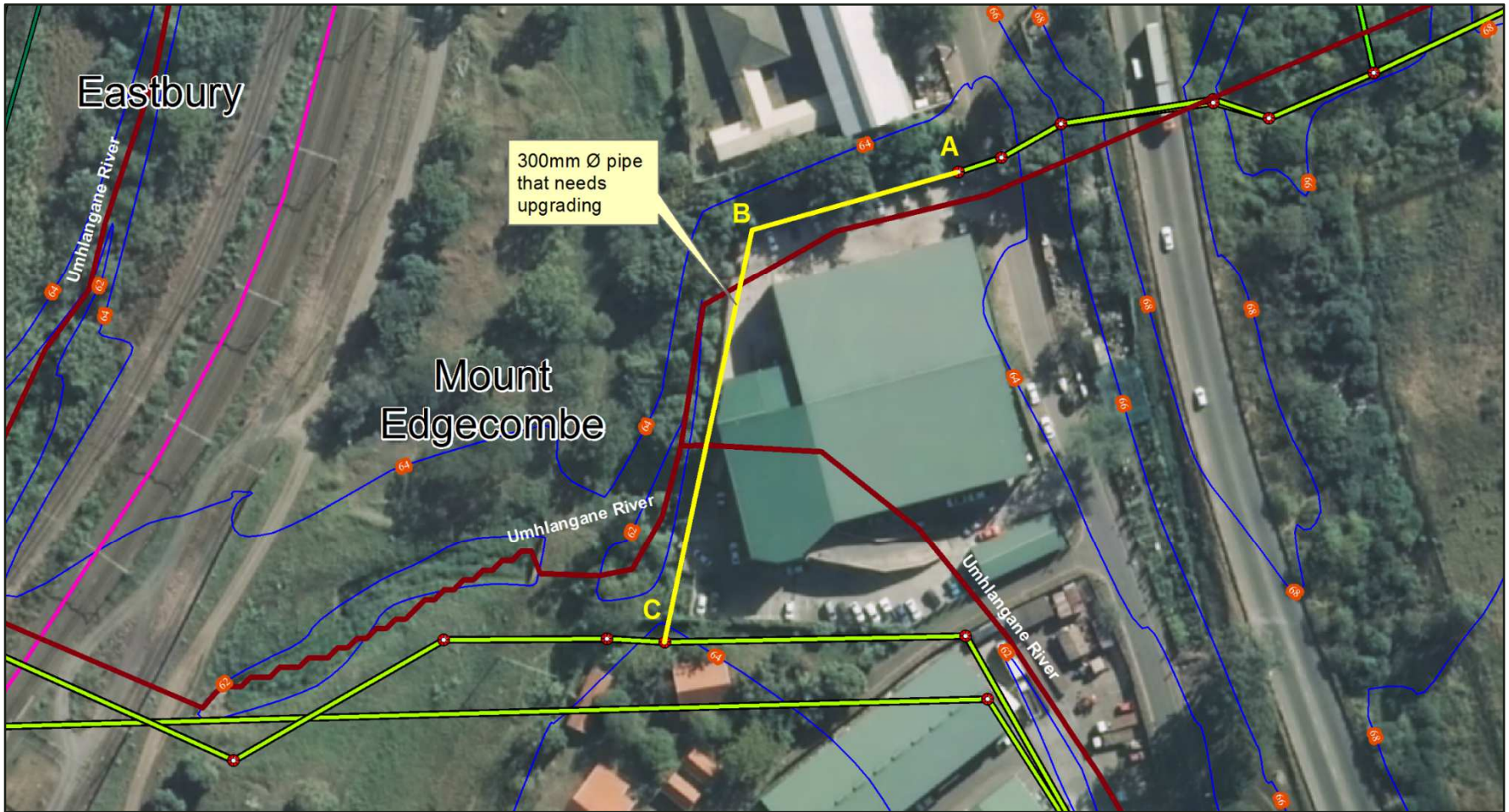


Figure 2: Proposed project details

Basic Assessment Process for the proposed Eastbury Drive Trunk Sewer Pipe Upgrade, Mount Edgecombe, Ethekewini Municipality

INVITATION TO REGISTER AND COMMENT

Please complete and return to Aurecon in order to be included in the public participation process:

Att: Yolandi Meyer

PO Box 335

Umhlanga Rocks

4320

Tel: 031 575 5500

yolandi.meyer@aurecongroup.com

TITLE		FIRST NAME	
INITIALS		SURNAME	
ORGANISATION			
POSTAL ADDRESS			
		POSTAL CODE	
TEL NUMBER		FAX NUMBER	
CELL NUMBER			
E-MAIL			

Yes, I would like to participate in this Basic Assessment YES

No, I am not interested NO

COMMENTS: (please use separate sheets if you wish)

- The following issues must be considered in the Basic Assessment process:

2. Please add the following people / organisations to the mailing list:

.....
.....
.....

We thank you for your participation