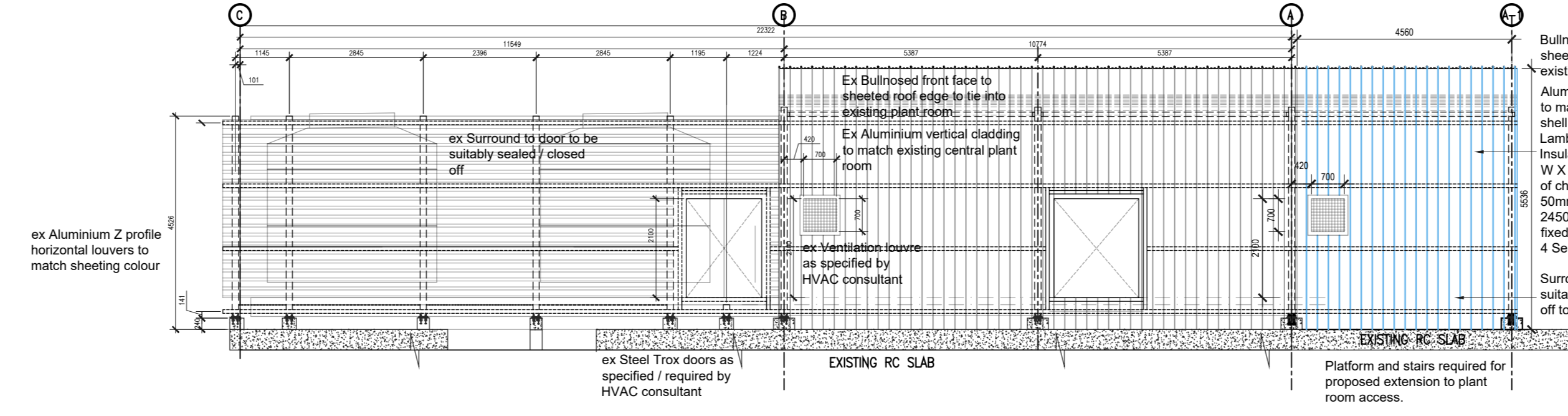
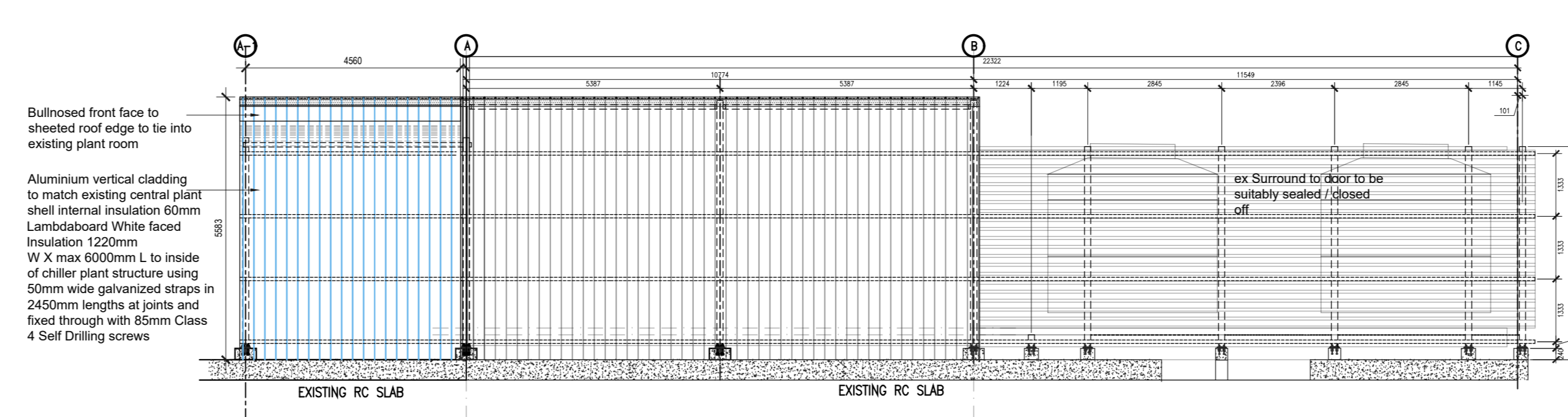


Roof and side cladding specification:
 Substrate is 50mm thick Saffolux 4108 Colortek® AZ 150 interlocking roof sheeting fixed to steel internal purlins at 1700mm centres, and ridge/purlins at 1500mm centres using Saffolux 4108 clips that must be fastened to steel purlins with 'Fasten' or Saffolux approved water head self tapping screws, all in accordance with manufacturer's recommendations. The sheeting will be a double interlocking concrete fire Saffolux 4108 as manufactured by Saffolux, reinforced in concrete lengths from Aluminium or Aluminium/Zinc coated steel.

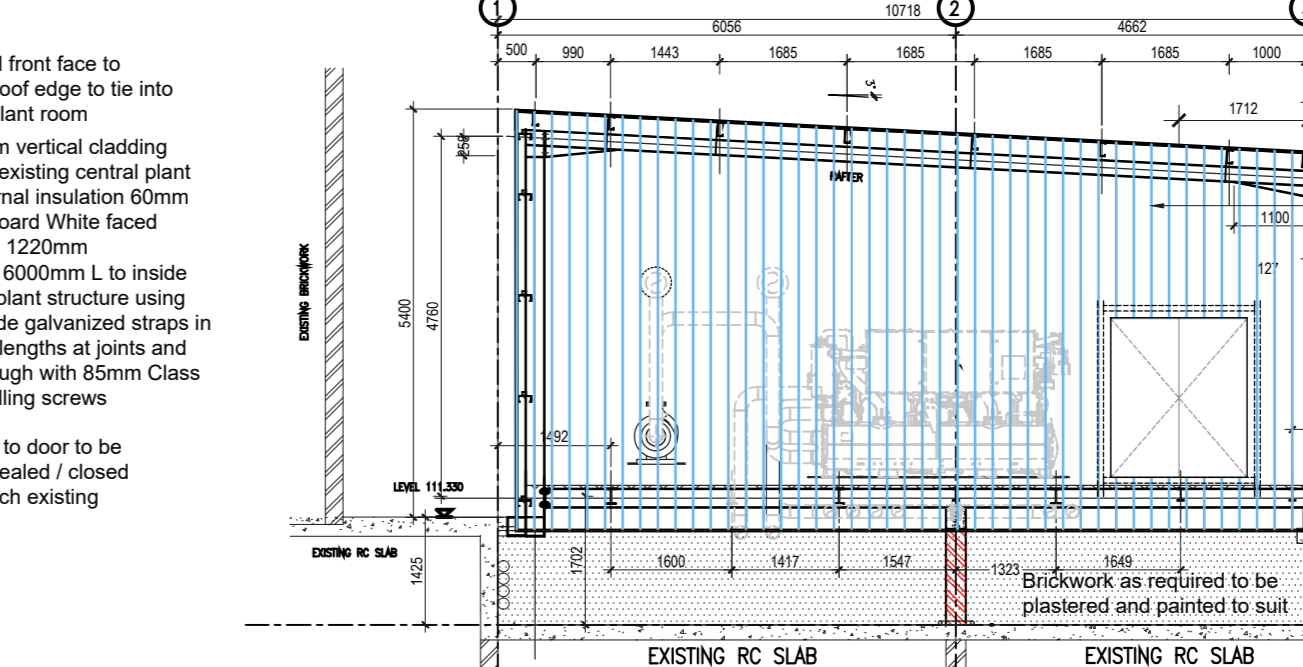
HVAC plant ceiling fire rated ceiling spec:
 3x layer Rhinoboard® FireStop® 15mm (locally manufactured, ISO 9001 & 14001 certification, recycled paper content, Greening Level E) fixed to Gyproframe™ UltraSTEEL Stud 51mm, Fix 2x layer Rhinoboard® FireStop® 10mm (locally manufactured, ISO 9001 & 14001 certification, recycled paper content, Greening Level E) fixed to Gyproframe™ UltraSTEEL Stud 51mm using Gyproc sharp point screws 25mm (for Base layer), 42mm (for Middle layer) and 60mm (for Face layer) at maximum 150mm centres. All joints should be staggered 0.5mm. Down Galvanneal Sheet Steel fixed to Studs using 42mm Rhinoboard Sharp point screws at 150mm centres between Face Layer and Middle Layer. Perimeter suspension shall be less than 400mm from the wall. Fix Gyproc galvanized steel angle 25mm x 25mm to Gyproframe™ UltraSTEEL Studs 51mm using one line of 2 steel post leveler or 1 Gyproc Water head tek screw and fixed to the beam/joist. Gyproc Suspension fixed to Gyproframe™ UltraSTEEL Stud 51mm using one line of 2 Gyproc Water Head Tek screw 15mm. Apply Gyproc® RhinoTape® to all joints and internal corners. Install Gyproframe™ Corner Bead to all external corners. Cover Gyproc® RhinoTape® with 1 layer of Gyproc® RhinoTape® (Multipurpose/Rhinogypsum, locally manufactured).



ELEVATION A - A scale 1:100



ELEVATION B - B scale 1:100



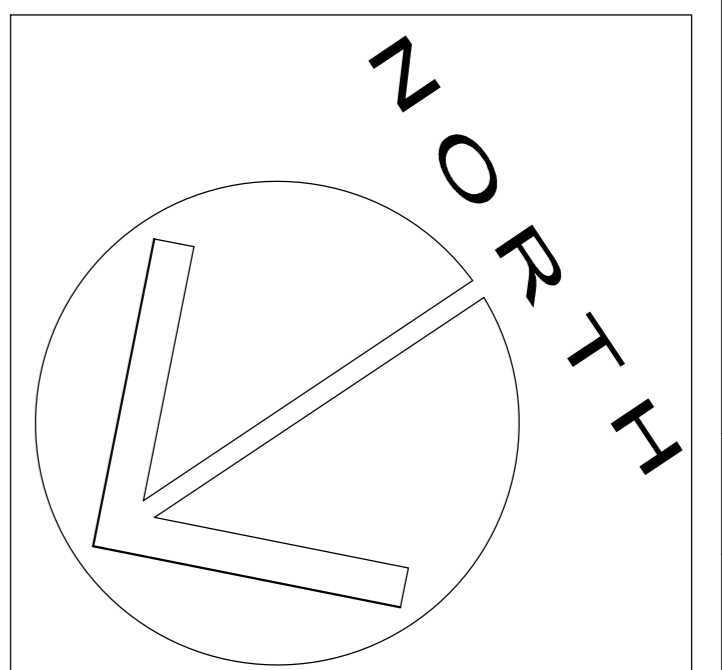
SECTION 3-3 scale 1:100



PHOTO SHOWING EXTERNAL OF EXISTING PLANT ROOM



PHOTO SHOWING FOOTING OF EXISTING PLANT ROOM



GENERAL NOTE:
 The Contractor is to verify all dimensions & levels on site before commencing work or producing shop drawings. Any discrepancies are to be reported to the architect immediately.
 COPYRIGHT NOTE:
 This drawing is subject to copyright and may not be reproduced, in whole or part, or in any manner whatsoever without written permission from the architect.

GENERAL NOTES:
 1. ALL DIMENSIONS ARE IN METRIC MILLIMETRES
 2. WRITTEN DIMENSIONS ARE TO TAKE PREFERENCE OVER SCALED DIMENSIONS
 3. WARD REFS, TABLES, CHAIRS AND ALL LOOSE FITTINGS ARE BY OTHER DIMENSIONS ON SITE PRIOR TO COMMENCING BUILDING WORK
 4. THIS DRAWING TO BE READ IN CONJUNCTION WITH ELECTRICAL, STRUCTURAL, MECHANICAL AND CEILING LAYOUTS
 5. THIS DRAWING TO BE READ IN CONJUNCTION WITH ELECTRICAL, STRUCTURAL, MECHANICAL AND STRUCTURAL ENGINEERS DRAWINGS

6. THE CONTRACTOR IS TO CARRY OUT ALL WORK IN ACCORDANCE WITH SABS 6400
 7. ALL MATERIAL SHALL BE OF NEW, GOOD QUALITY AND CONFORM TO DRAWING SPECIFICATIONS
 8. THE CONTRACTOR SHALL CHECK AND VERIFY ALL DIMENSIONS ON SITE PRIOR TO COMMENCING BUILDING WORK
 9. INTERNAL DOOR OPENINGS POSITIONED 115mm FROM INTERSECTING WALL UNLESS OTHERWISE NOTED

REVISION	DATE	DESCRIPTION	REVISION	DATE	DESCRIPTION	REVISION	DATE	DESCRIPTION	REVISION	DATE	DESCRIPTION
A	25.08.2022	Issue to Town Planning									

project ALTERATIONS TO EXISTING THEATRE BLOCK AND CHANGE ROOMS
 location 107 JB MARKS RD, LOT 5115, DURBAN, LOT 3
 client ST AUGUSTINES HOSPITAL FOR NETCARE PROPERTY HOLDINGS
 drawing no 1165-SD101
 revision A
 scale 1:100
 date 25.08.2022
 drawn RB

drawing COUNCIL SUBMISSION
 GROUND STOREY THEATRE PLANT ROOMS
 CLIENT WAYNE ALLEN - Pr Arch no 20714

