

Figure 1: Location of the proposed Sol Invictus 132kV powerline and proposed Aggeneys substation expansion (source: LOGIS, 2021)

PROPOSED SOL INVICTUS 132KV OVERHEAD POWERLINE NEAR AGGENEYS, NORTHERN CAPE PROVINCE
 Draft BAR – Appendix E - Maps

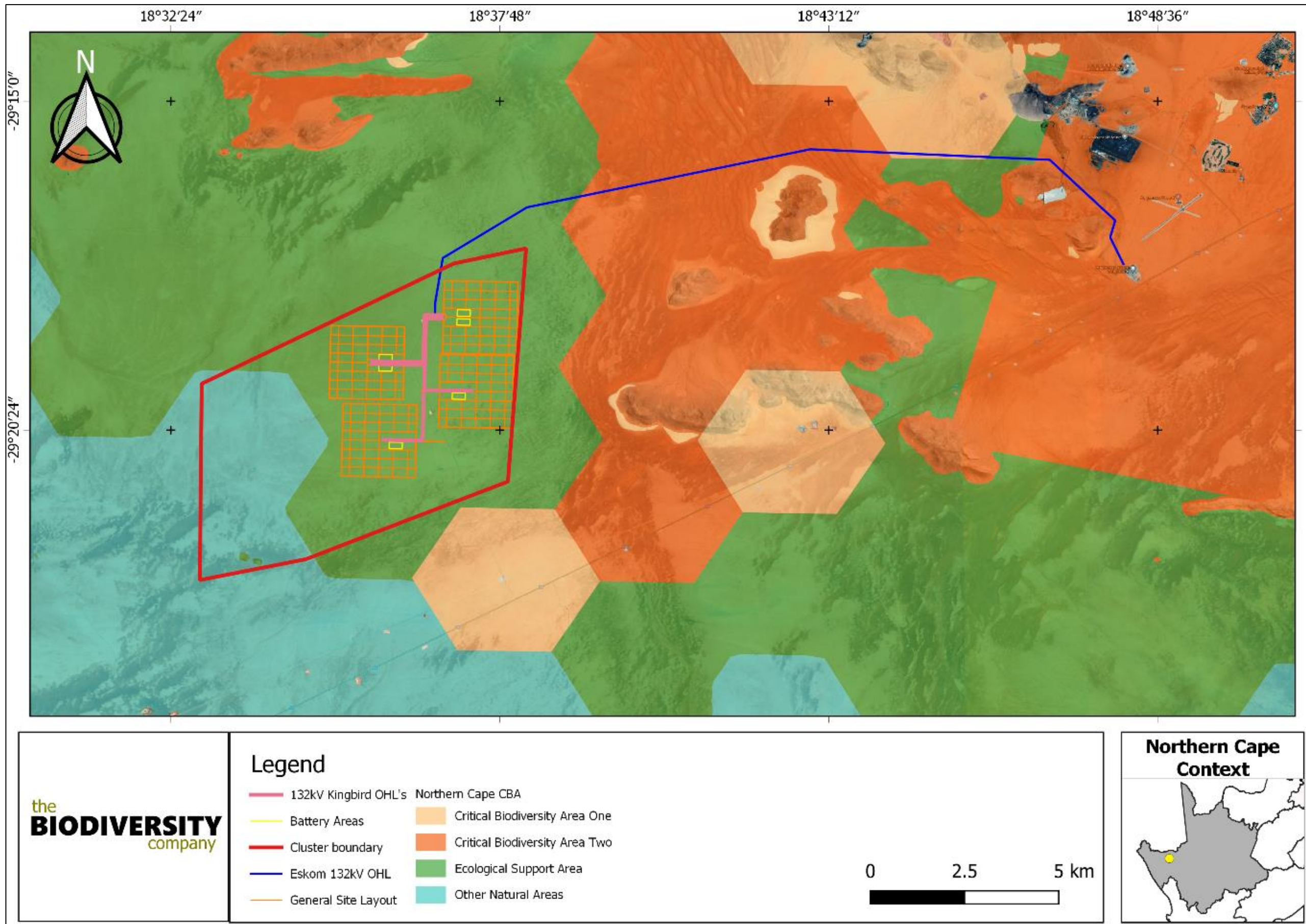


Figure 2: CBAs in relation to the proposed Sol Invictus Powerline and Aggeneis substation (source: The Biodiversity Company, 2021)
 PROPOSED SOL INVICTUS 132KV OVERHEAD POWERLINE NEAR AGGENEIS, NORTHERN CAPE PROVINCE
 Draft BAR – Appendix E - Maps

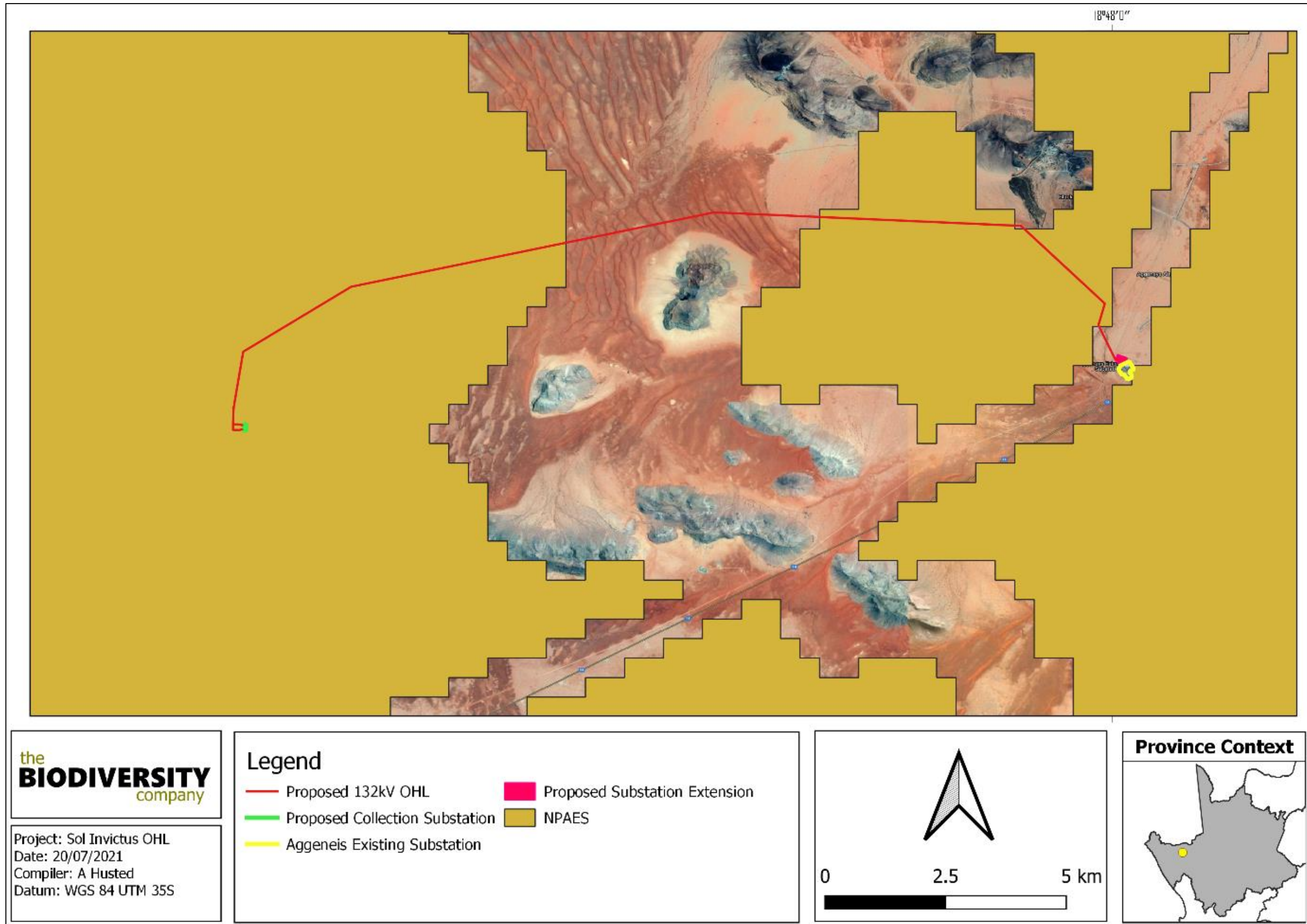


Figure 3: The project area in relation to the Kamiesberg Bushmanland Augrabies NPAES (source: The Biodiversity Company, 2021)
 PROPOSED SOL INVICTUS 132KV OVERHEAD POWERLINE NEAR AGGENEYS, NORTHERN CAPE PROVINCE
 Draft BAR – Appendix E - Maps

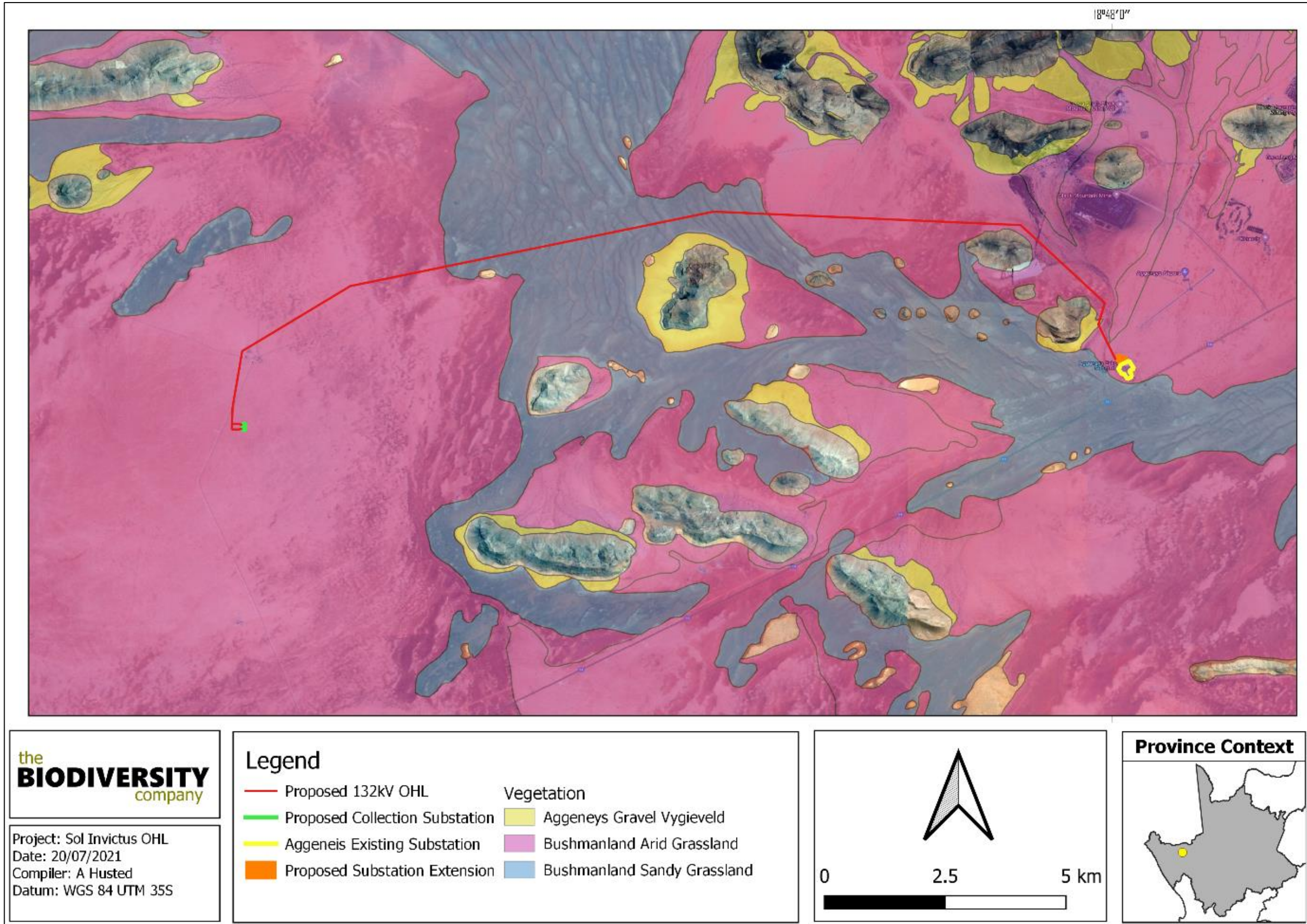


Figure 4: Map illustrating the vegetation type associated with the project area
 PROPOSED SOL INVICTUS 132KV OVERHEAD POWERLINE NEAR AGGENEYS, NORTHERN CAPE PROVINCE
 Draft BAR – Appendix E - Maps

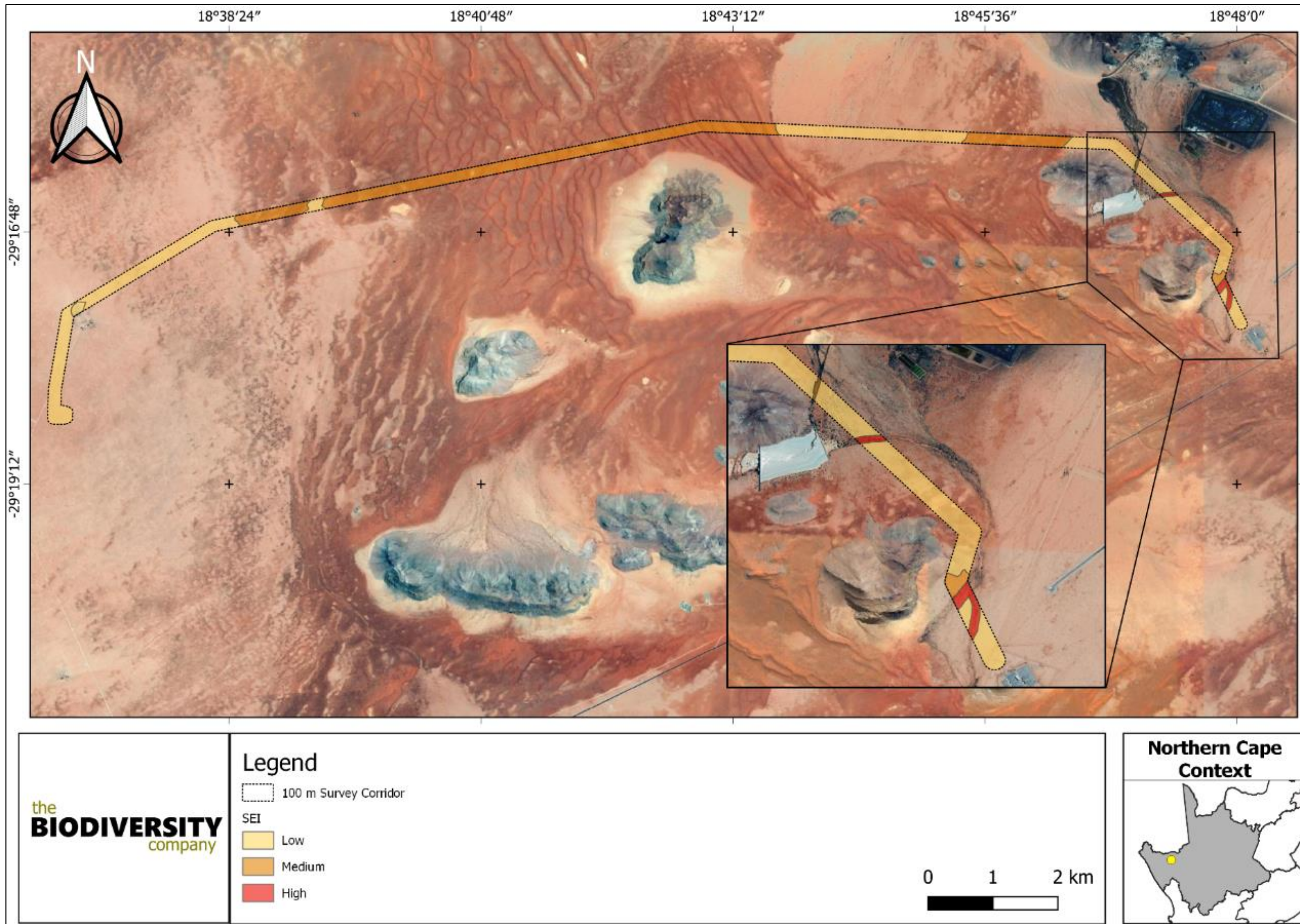


Figure 5: Terrestrial biodiversity sensitivity for the OHPL
 PROPOSED SOL INVICTUS 132KV OVERHEAD POWERLINE NEAR AGGENEYS, NORTHERN CAPE PROVINCE
 Draft BAR – Appendix E - Maps

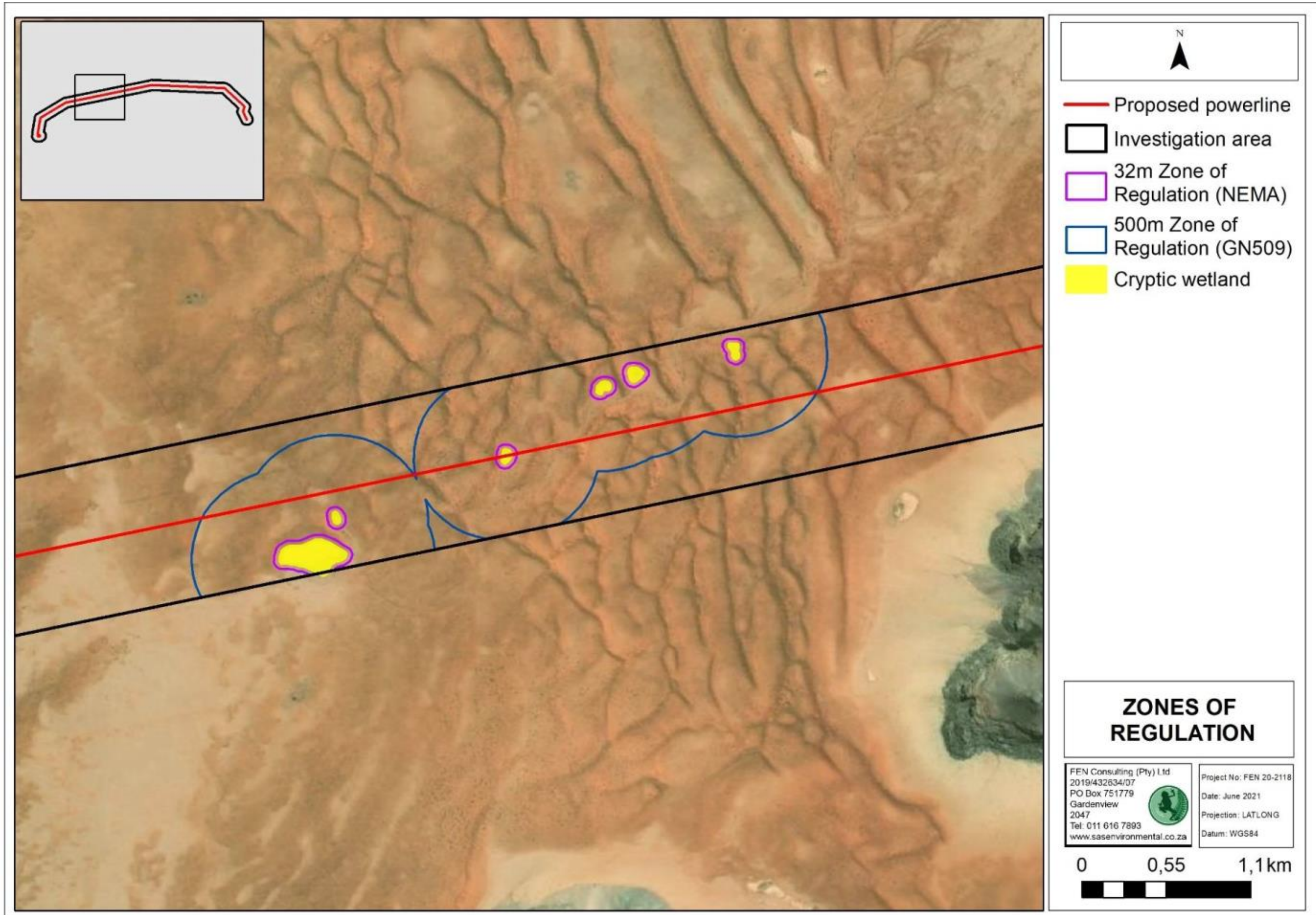


Figure 6 Cryptic wetlands identified within the investigation area of the proposed powerline with the associated zones of regulation in terms of NEMA and GN509 as it relates to the NWA
 PROPOSED SOL INVICTUS 132KV OVERHEAD POWERLINE NEAR AGGENEYS, NORTHERN CAPE PROVINCE
 Draft BAR – Appendix E - Maps

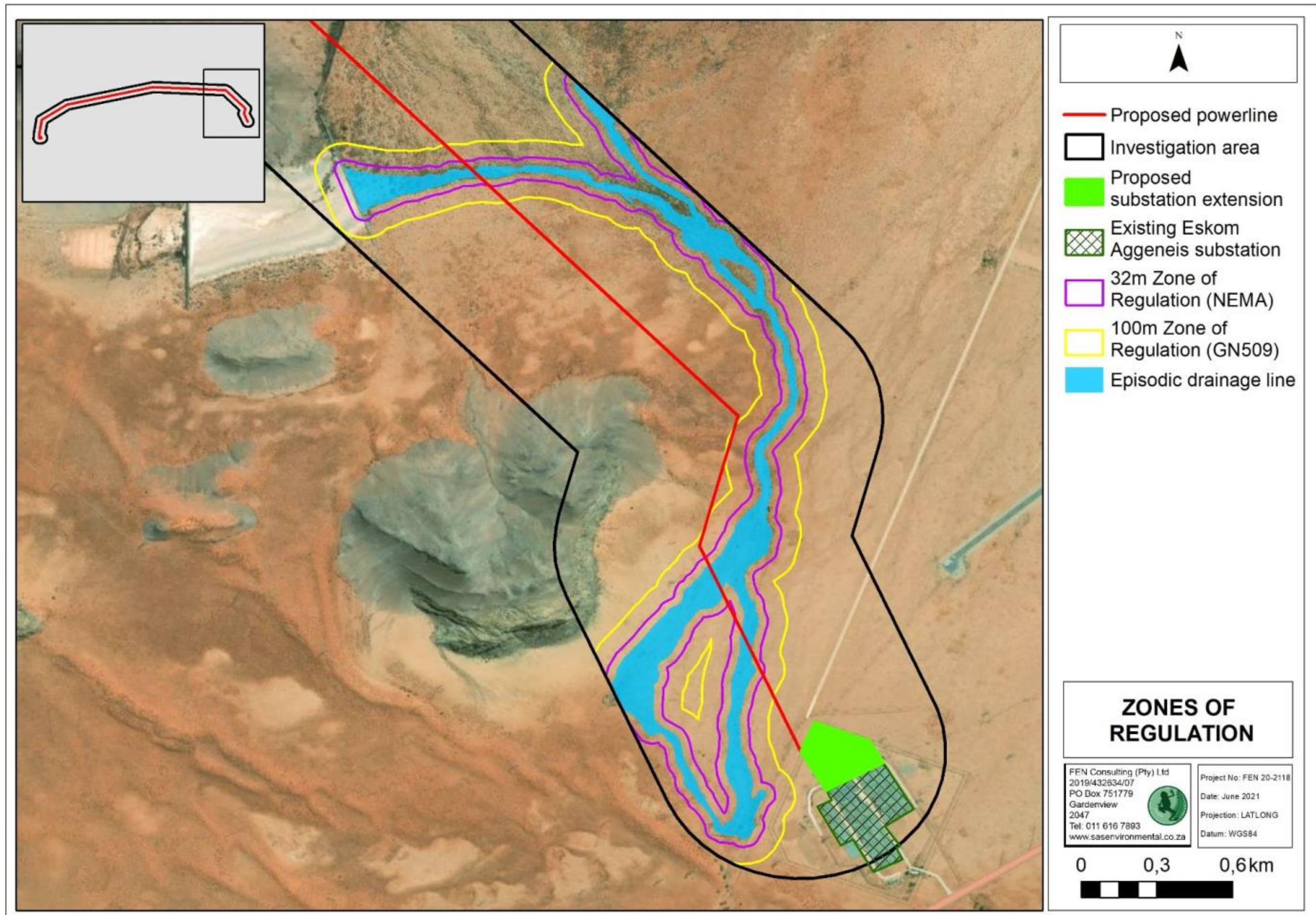


Figure 7 The episodic drainage line associated with the eastern portion of the proposed powerline and investigation area with the associated zones of regulation in terms of NEMA and GN509 as it relates to the NWA
 PROPOSED SOL INVICTUS 132KV OVERHEAD POWERLINE NEAR AGGENEYS, NORTHERN CAPE PROVINCE
 Draft BAR – Appendix E - Maps

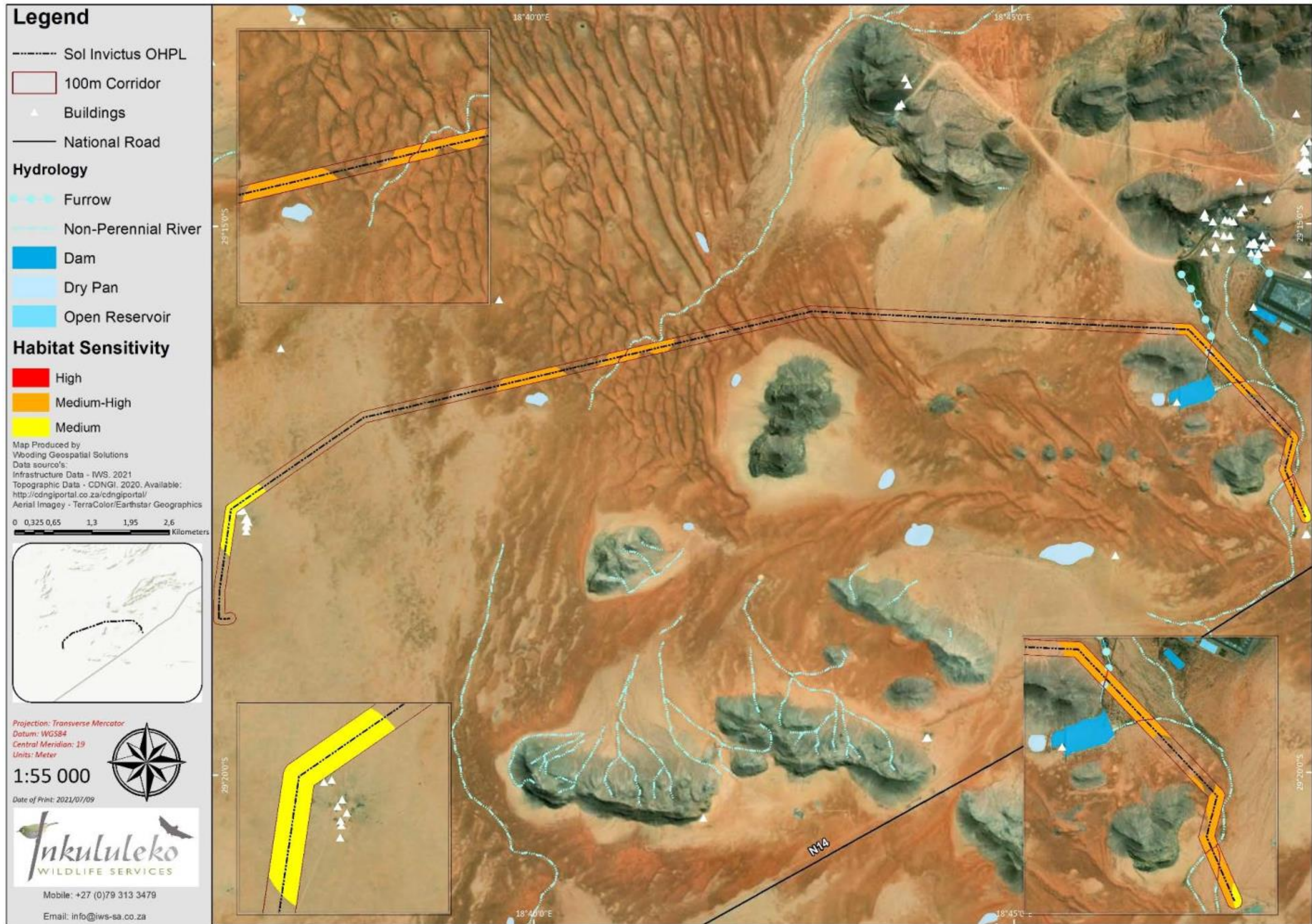


Figure 8: Bat sensitivity map for the proposed Sol Invictus Overhead Power Line
 PROPOSED SOL INVICTUS 132KV OVERHEAD POWERLINE NEAR AGGENEYS, NORTHERN CAPE PROVINCE
 Draft BAR – Appendix E - Maps

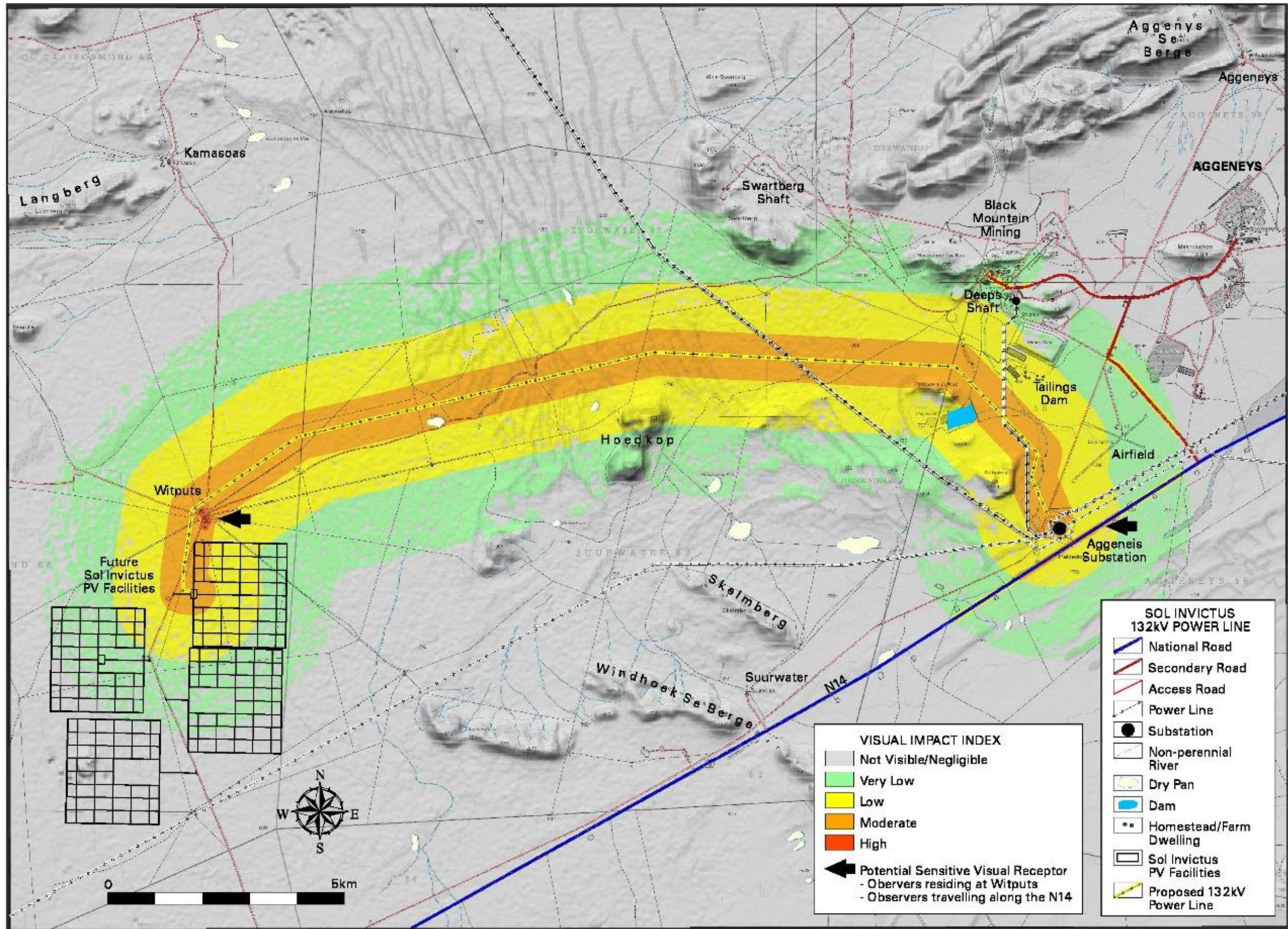


Figure 9: Visual impact index and potentially affected sensitive visual receptors
 PROPOSED SOL INVICTUS 132KV OVERHEAD POWERLINE NEAR AGGENEYS, NORTHERN CAPE PROVINCE
 Draft BAR – Appendix E - Maps