

Appendix E:

Public Participation



Appendix E1: Signboards



NOTICE OF APPLICATIONS FOR ENVIRONMENTAL AUTHORISATIONS

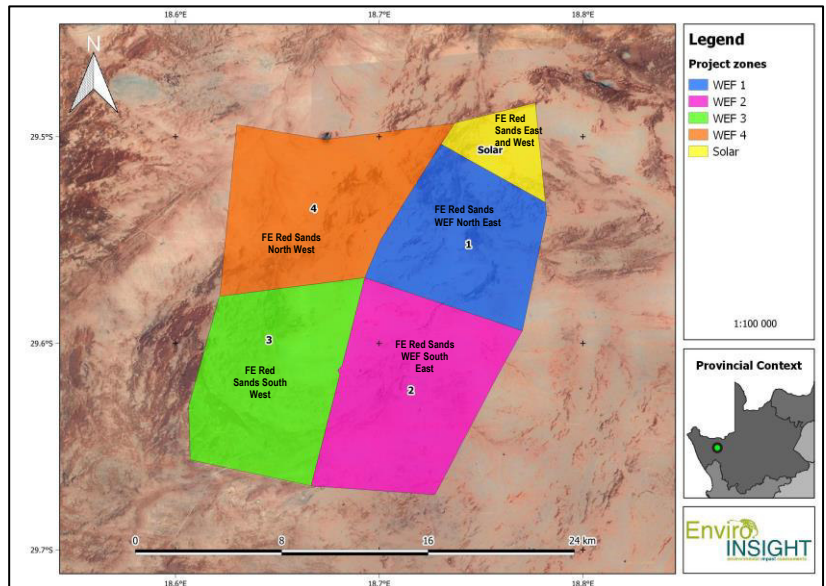
Notice is given in terms of the National Environmental Management Act (Act No. 107 of 1998, as amended), the Environmental Impact Assessment Regulations (2014, as amended) and GN 114 (gazetted on 16 February 2018, as amended) of the Basic Assessment (BA) processes to be followed for the proposed construction of four wind energy facilities (WEF) and its associated infrastructure and two solar energy facility (SEF) and its associated infrastructure to be submitted to the Department of Forestry, Fisheries and the Environment (DFFE) for environmental authorisations (EA).

Project Names:

- FE Red Sands Solar East
- FE Red Sands Solar West
- FE Red Sands WEF North East
- FE Red Sands WEF South East
- FE Red Sands South West
- FE Red Sands North West

Applicant: FE Red Sands (Pty) Ltd

Project Description: The Applicant wishes to apply for environmental authorisations for the proposed development of four (4) WEFs and two (2) SEFs as well as the associated infrastructure southwest of Aggeneys, Northern Cape Province. The proposed WEFs will consist of up to 192 wind turbines with a generation capacity of up to 7.5 MW per turbine, with a hub height of up to 150m and a rotor diameter of up to 200m. Additional ancillary infrastructures will include Battery Energy Storage System (BESS), internal road networks, workshop, storage room, office and laydown area for the construction period.



Location & Property Description: The FE Red Sands WEFs & SEFs project areas are located on the Remaining Extent of the Farm Donkerduispraat 95 (Portion of this will be for solar), Remaining Extent of the Farm Rooi Duin 100, Remaining Extent of the Farm Kliphakskeen 98, Portion 1 of the Farm Kliphakskeen 98, Remaining Extent of the Farm Kraalbosch Vlei 99, Portion 1 of the Farm Kraalbosch Vlei 99, within the Nama-Khoi Local Municipality. The site can be reached via a gravel road from the N14 (GPS: 29°34'44.11"S, 18°41'20.29"E). All six projects are located within Zone 8 (Springbok) of the Renewable Energy Development Zones (REDZ) and accordingly BA processes will be followed.

A total of six (6) EAs applications for BAs will be lodged for the four (4) WEFs and two (2) SEFs, however, an integrated public participation process for the projects will be undertaken as they are located within the same geographical area and comprise the same type of activities. All registered interested and affected parties (I&APs) will receive notification once the draft basic assessment reports for each WEF and SEF are available for public review for a period of 30 days.

To register as an I&AP, receive updated information on the process and to submit comments regarding this matter, individuals are requested to submit their complete contact details to Enviro-Insight CC in writing, as per the details provided below.

Enviro-Insight CC

Reference: FE Red Sands

Attention: Ms Ronell Kuppen

Email: ronell@enviro-insight.co.za

Tel: 012 807 0637

Website: www.enviro-insight.co.za

Postal address:

Unit 8, Oppidraai Office Park

862 Wapadrand Road

Wapadrand Security Village

Pretoria 0081

Enviro
INSIGHT
www.enviro-insight.co.za

KENNISGEWING VAN AANSOEKE VIR OMGEWINGSMAGTIGINGS

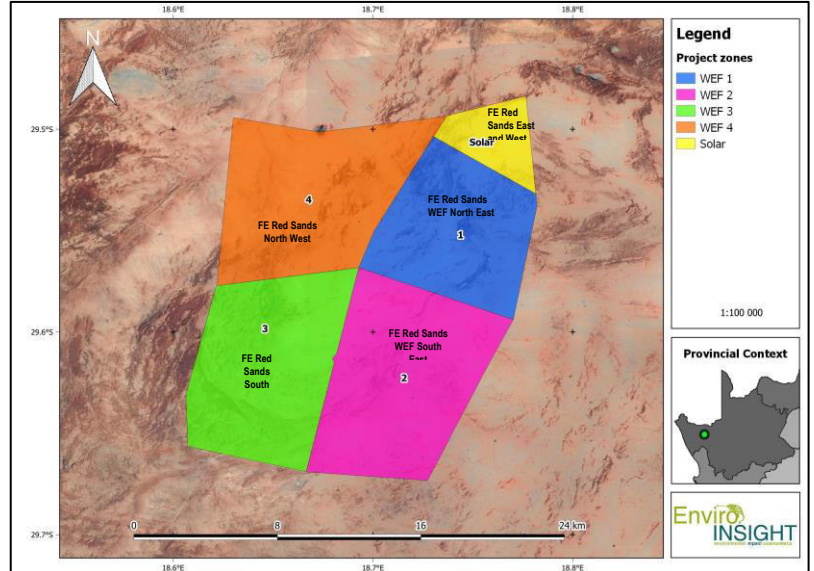
Kennis word gegee ingevolge die Nasionale Wet op Omgewingsbestuur (Wet No. 107 van 1998, soos gewysig), die Regulasies op Omgewingsimpak Evaluering (2014, soos gewysig) en GK 114 (gepubliseer op 16 Februarie 2018, soos gewysig) van die Basiese Assesserings (BA) prosesse wat gevolg moet word vir die voorgestelde konstruksie van vier windenergie fasiliteite (WEF) en geassosieerde infrastruktuur en twee sonkrag fasiliteite (SEF) en geassosieerde infrastruktuur wat by die Departement van Bosbou, Visserye en die Omgewing (DFFE) ingedien moet word vir omgewingsmagtigings.

Projek Name:

- FE Red Sands Solar East
- FE Red Sands Solar West
- FE Red Sands WEF North East
- FE Red Sands WEF South East
- FE Red Sands South West
- FE Red Sands North West

Aansoeker: FE Red Sands (Pty) Ltd

Projekbeskrywing: Die Aansoeker beplan om aansoek te doen vir omgewingsmagtigings vir die voorgestelde ontwikkeling van vier (4) WEFs en twee (2) SEFs sowel as die geassosieerde infrastruktuur suidwes van Aggeneys, Noord-Kaap Provinsie. Die voorgestelde WEF's sal bestaan uit tot 192 windlaaiers met 'n opwekkingskapasiteit van tot 7,5 MW per windlaaier, met 'n naafhoogte van tot 150m en 'n rotor deursnee van tot 200m. Bykomende infrastruktuur sluit in battery-energie-bergingstelsels (BESS), interne padnetwerke, werkswinkel, stoorkamer, kantoor en afleggingsgebied vir die konstruksietyperk.



Ligging & Eiendomsbeskrywing: Die FE Red Sands WEFs & SEFs projek area is geleë op die Restant van die Plaas Donkerduispraat 95 (Gedeelte hiervan sal vir sonkrag wees), Restant van die Plaas Rooi Duin 100, Restant Gedeelte van die Plaas Kliphakskeen 98, Gedeelte 1 van die Plaas Kliphakskeen 98, Restant van die Plaas Kraalbosch Vlei 99, Gedeelte 1 van die Plaas Kraalbosch Vlei 99, binne die Nama-Khoi Plaaslike Munisipaliteit. Die terrein kan bereik word via 'n grondpad vanaf die N14 (GPS: 29°34'44.11"S, 18°41'20.29"O). Die projek area is geleë binne Sone 8 (Springbok) van die Ontwikkelingssones vir Hernubare Energie (REDZ).

'n Totaal van vier (4) WEFs en twee (2) SEFs omgewingsmagtigings aansoeke sal ingedien word, maar 'n geïntegreerde publieke deelname proses vir al ses projekte sal onderneem word aangesien hulle binne dieselfde geografiese gebied geleë is en dieselfde tiepe aktiwiteite behels. Alle geregistreerde belanghebbende en geaffekteerde partye (B&GP'e) sal kennisgewing ontvang sodra die basiese assesseringsverslae vir 'n tydperk van 30 dae vir publieke hersiening beskikbaar is.

Om as 'n B&GP te registreer, opgedateerde inligting oor die proses te ontvang en kommentaar oor hierdie aangeleentheid in te dien, word individue versoek om hul volledige kontakbesonderhede skriftelik by Enviro-Insight CC (EI) in te dien, soos volgens die besonderhede hieronder verskaf.

Enviro-Insight CC

Reference: FE Red Sands

Verwysing: Ms Ronell Kuppen

E-pos: ronell@enviro-insight.co.za

Tel: 012 807 0637

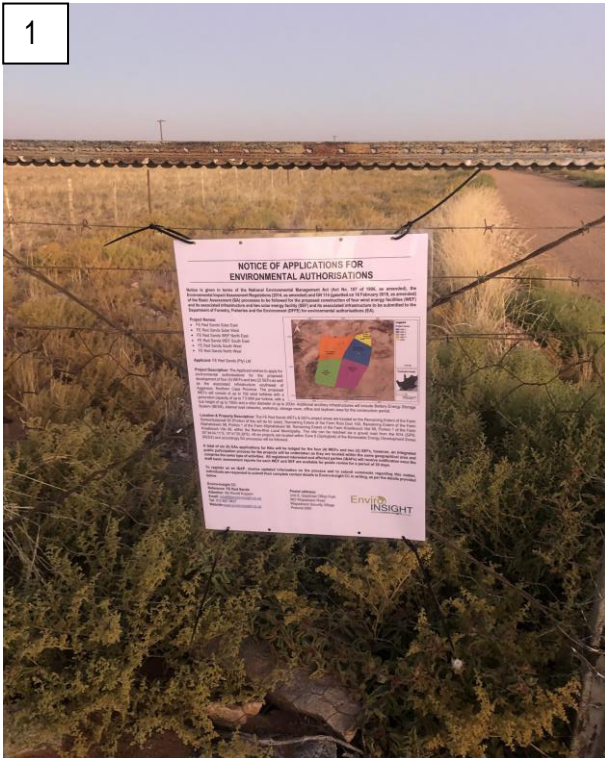
Webwerf: www.enviro-insight.co.za

Posadres:

Unit 8, Oppidraai Office Park
862 Wapadrand Road
Wapadrand Security Village
Pretoria 0081



Deur u persoonlike inligting met EI te deel deur te registreer vir hierdie projek, voorsien u toestemming vir EI om dit te hou en gebruik vir doeleindes van publieke deelname vir die omgewingsmagtigings proses.



5



6



7

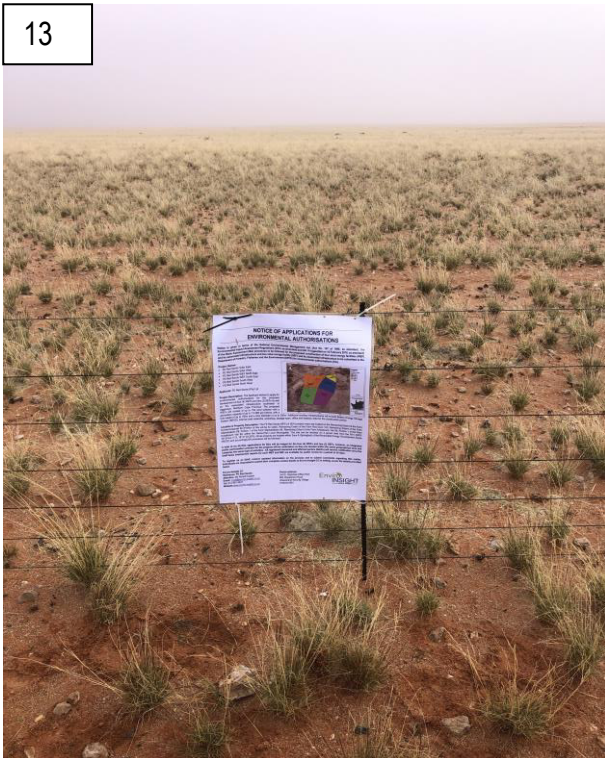


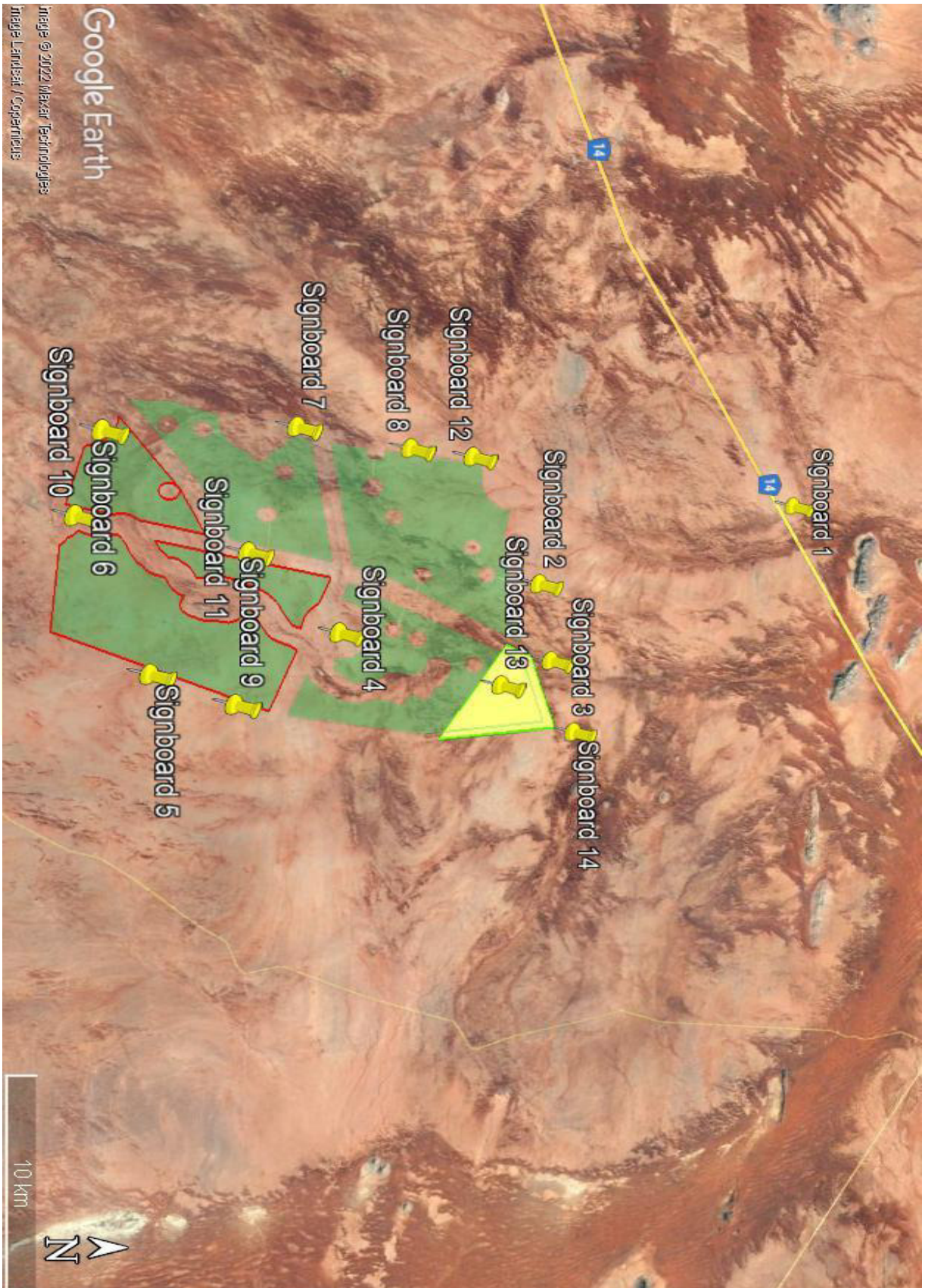
8



Mobile: Sam - 072 437 1742
 Mobile: Luke - 083 784 1997
 Email: info@enviro-insight.co.za
 Website: www.enviro-insight.co.za







Mobile: Sam - 072 437 1742
Mobile: Luke - 083 784 1997
Email: info@enviro-insight.co.za
Website: www.enviro-insight.co.za

Appendix E2: Advertisement



NOTICE OF APPLICATIONS FOR ENVIRONMENTAL AUTHORISATIONS

Notice is given in terms of the National Environmental Management Act (Act No. 107 of 1998, as amended), the Environmental Impact Assessment Regulations (2014, as amended) and GN 114 (gazetted on 16 February 2018, as amended) of the Basic Assessment (BA) processes to be followed for the proposed construction of four wind energy facilities (WEF) and its associated infrastructure and two solar energy facility (SEF) and its associated infrastructure to be submitted to the Department of Forestry, Fisheries and the Environment (DFFE) for environmental authorisations (EA).

Project Names:

- FE Red Sands Solar East
- FE Red Sands WEF South East
- FE Red Sands Solar West
- FE Red Sands WEF South West
- FE Red Sands WEF North East
- FE Red Sands WEF North West

Applicant: FE Red Sands (Pty) Ltd

Project Description: The Applicant wishes to apply for environmental authorisations for the proposed development of four (4) WEFs and two (2) SEFs as well as the associated infrastructure southwest of Aggenays, Northern Cape Province. The proposed WEFs will consist of up to 192 wind turbines with a generation capacity of up to 7.5 MW per turbine, with a hub height of up to 150m and a rotor diameter of up to 200m. Additional ancillary infrastructures will include Battery Energy Storage System (BESS), internal road networks, workshop, storage room, office and laydown area for the construction period.

Location & Property Description: The FE Red Sands WEFs & SEFs project areas are located on the Remaining Extent of the Farm Donkerduispraat 95 (Portion of this will be for solar), Remaining Extent of the Farm Rooi Duin 100, Remaining Extent of the Farm Kiphakskeen 98, Portion 1 of the Farm Kiphakskeen 98, Remaining Extent of the Farm Kraalbosch Vlei 99, Portion 1 of the Farm Kraalbosch Vlei 99, within the Nama-Khoi Local Municipality. The site can be reached via a gravel road from the N14 (GPS: 29°34'44.11"S, 18°41'20.29"E). All six projects are located within Zone 8 (Springbok) of the Renewable Energy Development Zones (REDZ) and accordingly BA processes will be followed.

A total of six (6) EAs applications for BAs will be lodged for the four (4) WEFs and two (2) SEFs, however, an integrated public participation process for the projects will be undertaken as they are located within the same geographical area and comprise the same type of activities. All registered interested and affected parties (I&APs) will receive notification once the draft basic assessment reports for each WEF and SEF are available for public review for a period of 30 days.

To register as an I&AP, receive updated information on the process and to submit comments regarding this matter, individuals are requested to submit their complete contact details to Enviro-Insight CC in writing, as per the details provided below.

Enviro-Insight CC

Reference: FE Red Sands
Attention: Ms Ronell Kuppen
Email: ronell@enviro-insight.co.za
Tel: 012 807 0637
Website: www.enviro-insight.co.za

Postal address:
Unit 8, Oppidraal Office Park
862 Wapadrand Road
Wapadrand Security Village
Pretoria 0081

By sharing your personal information with EI, by registering for this project, you provide consent for EI to keep and use it for purposes of public participation for the environmental assessment process only.

Enviro INSIGHT
www.enviro-insight.co.za

KENNISGEWING VAN AANSOEKE VIR OMGEWINGSMAGTIGINGS

Kennis word gegee ingevolge die Nasionale Wet op Omgewingsbestuur (Wet No. 107 van 1998, soos gewysig), die Regulasies op Omgewingsimpak Evaluering (2014, soos gewysig) en GK 114 (gepubliseer op 16 Februarie 2018, soos gewysig) van die Basiese Asseserings (BA) prosesse wat gevolg moet word vir die voorgestelde konstruksie van vier windenergie fasiliteite (WEF) en geassosieerde infrastruktuur en twee sonkrag fasiliteite (SEF) en geassosieerde infrastruktuur wat by die Departement van Bosbou, Visserye en die Omgewing (DFFE) ingedien moet word vir omgewingsmagtigings.

Projek Name:

- FE Red Sands Solar East
- FE Red Sands WEF South East
- FE Red Sands Solar West
- FE Red Sands WEF South West
- FE Red Sands WEF North East
- FE Red Sands WEF North West

Aansoeker: FE Red Sands (Pty) Ltd

Projekbeskrywing: Die Aansoeker beplan om aansoek te doen vir omgewingsmagtigings vir die voorgestelde ontwikkeling van vier (4) WEFs en twee (2) SEFs sowel as die geassosieerde infrastruktuur suidwes van Aggenays, Noord-Kaap Provinsie. Die voorgestelde WEF's sal bestaan uit tot 192 windlaaiers met 'n opwekkingskapasiteit van tot 7,5 MW per windlaaier, met 'n naafhoogte van tot 150m en 'n rotor deursnee van tot 200m. Bykomende infrastruktuur sluit in battery-energie-bergingstelsels (BESS), interne padnetwerke, werkwinkel, stookkamer, kantoor en afleggingsgebied vir die konstruksie tydperk.

Ligging & Eiendomsbeskrywing: Die FE Red Sands WEFs & SEFs projek area is geleë op die Restant van die Plaas Donkerduispraat 95 (Gedeelte hiervan sal vir sonkrag wees), Restant van die Plaas Rooi Duin 100, Restant Gedeelte van die Plaas Kiphakskeen 98, Gedeelte 1 van die Plaas Kiphakskeen 98, Restant van die Plaas Kraalbosch Vlei 99, Gedeelte 1 van die Plaas Kraalbosch Vlei 99, binne die Nama-Khoi Plaaslike Munisipaliteit. Die terrein kan bereik word via 'n grondpad vanaf die N14 (GPS: 29°34'44.11"S, 18°41'20.29"E). Die projek area is geleë binne Sone 8 (Springbok) van die Ontwikkelingsone vir Herubare Energie (REDZ).

'n Totaal van vier (4) WEFs en twee (2) SEFs omgewingsmagtigings aansoek sal ingedien word, maar 'n geïntegreerde publieke deelname proses vir al ses projekte sal onderneem word aangesien hulle binne dieselfde geografiese gebied geleë is en dieselfde tipe aktiwiteite behels. Alle geregisterde belanghebbende en geïntereerde partye (B&GPe) sal kennisgewing ontvang sodra die basiese assesseringsverslae vir 'n tydperk van 30 dae vir publieke hersiening beskikbaar is.

Om as 'n B&GP te registreer, opgedateerde inligting oor die proses te ontvang en kommentaar oor hierdie aangeleentheid in te dien, word individue versoek om hul volledige kontakbesonderhede skriftelik by Enviro-Insight CC (EI) in te dien, soos volgens die besonderhede hieronder verskaaf.

Enviro-Insight CC

Verwysing: FE Red Sands
Aandag: Ms Ronell Kuppen
E-pos: ronell@enviro-insight.co.za
Tel: 012 807 0637
Webwerf: www.enviro-insight.co.za

Posadres:
Unit 8, Oppidraal Office Park
862 Wapadrand Road
Wapadrand Security Village
Pretoria 0081

Deur u persoonlike inligting met EI te deel deur te registreer vir hierdie projek, voorsien u toestemming vir EI om dit te hou en gebruik vir doeleindes van publieke deelname vir die omgewingsmagtigings proses.

Enviro INSIGHT
www.enviro-insight.co.za

SIGN UP IS EASY CONTACT: 027 712 1242
PLATINUM ONLINE = NO BRAINER
SLIM MENSE MAAK SLIM BESLUITTE

Synonyms for No-brainer

piece of cake cakewalk duck soup cinch
easy decision platinum online

NO BRAINER CONTACT: 027 712 1242

QUALITY TYRES

POFADDER

SERVICE REPAIR

Andries: 0723632552
VOORTREKKER ST 38
andries.qualitytyres@yashoo.com

GENERAL SERVICE OF VEHICLES, NEW AND USED TYRES.

OKIEP
country hotel
NAMAKWALAND

1855

The Perfect Stay Between Cape Town & Windhoek On The N7 - 75m from Springbok

DSTV, AIR-CONDITIONING, SWIMMING POOL, SELF-CATERING ROOMS, BAR & RESTAURANT AND CONFERENCE FACILITIES AVAILABLE
Children under the age of 12 stay free

Okiep Country Hotel. We go above and beyond

Si+

smart-it
accounting software

We specialise in
POS, Stock Control,
Job Cards, Quotations,
Sales Orders, CRM & GL.

FOR A DEMO
Altus: 0277121242
www.smart-it.co.za

johané mason
arbeidsterapeut / occupational therapist

076 577 5719 027 - 712 1101
johanemason.ot@gmail.com Johané Mason Occupational Therapist
Pediatrics - Neurology - Hand Therapy - Physical Rehab

PORT NOLLOTH HOÛRSKOOI MATRIEKAFSKEID-UITRUSTINGS LAAT DIE KOPPE DRAAI



Appendix E3: Background Information Document (BID)



Background Information Document (BID)
Proposed Red Sands Wind Energy Facilities (WEF) and
Solar Energy Facilities (SEF)
Northern Cape Province, South Africa

DFFE Ref. No: TBC

October 2022

Applicant:

FE Red Sands (Pty) Ltd

Environmental Consultant:

Enviro-Insight CC

Tel: 012 807 0637

Email: ronell@enviro-insight.co.za

www.enviro-insight.co.za

TABLE OF CONTENTS

1	Introduction.....	3
2	Project descriptions.....	3
3	Legislative process.....	10
3.1	Screening Report.....	11
3.2	Renewable Energy Development Zone.....	12
3.3	NEMA EIA Regulations (2014, as amended).....	13
4	Specialist Studies.....	16
5	Public Participation Process.....	16
5.1	Objectives of Public Participation (PP).....	16
5.2	Legislation.....	16
5.2.1	Identification of I&APs.....	17
5.3	Notification of availability of Basic Assessment report.....	17

LIST OF FIGURES

Figure 1:	Locality map of the study area for the proposed Renewable Energy Developments.....	5
Figure 2:	Locality map of the study area for Red Sands WEF 1.....	6
Figure 3:	Locality map of the study area for Red Sands WEF 2.....	7
Figure 4:	Locality map of the study area for Red Sands WEF 3.....	8
Figure 5:	Locality map of the study area for Red Sands WEF 4.....	9
Figure 6:	Locality map of the study area for Red Sands Solar.....	10
Figure 7:	Locality map indicating the study area for the proposed Red Sands Renewable Energy Developments located in the RED Zone.....	13
Figure 8:	Basic Assessment Process.....	15

1 INTRODUCTION

FE Red Sands (Pty) Ltd (hereafter the Applicant) proposes the development of four (4) wind energy facility (WEF) and two Solar Energy Facilities (SEF) and its associated infrastructure on a site located approximately 77 km southwest of Pofadder and 81 km east of Springbok. The sites are located in the within the Nama-Khoi Local Municipality, in the Northern Cape Province of South Africa.

The proposed developments, to be known as Red Sands, will generate electricity which will feed into the National Grid. Enviro-Insight CC (hereafter Enviro-Insight) has been appointed as the independent consultancy to undertake the requisite environmental impact assessment (EIA) process for the WEF as required in terms of the National Environmental Management Act (No. 107 of 1998) (NEMA), as amended, on behalf of the Applicant.

A total of six (6) EAs applications for BAs will be lodged for the four (4) WEFs and two (2) SEFs, however, an integrated public participation process for the projects will be undertaken as they are located within the same geographical area and comprise the same type of activities.

This Background Information Document (BID) has been developed to:

- Provide a description of the proposed Project;
- Provide an overview of the environmental regulatory processes which will be undertaken in accordance with the South African legislation; and
- Provide details of the Public Participation Process (PPP) and how Interested and Affected Parties (I&APs) can become involved.

2 PROJECT DESCRIPTIONS

The proposed study area for the renewable energy developments is located approximately 77 km southwest of Pofadder and 81 km east of Springbok within the Nama-Khoi Local Municipality, in the Northern Cape. The site can be reached via a gravel road off the N14.

The FE Red Sands WEFs & SEFs project areas are located on the Remaining Extent of the Farm Donkerduispraat 95 (Portion of this will be for solar), Remaining Extent of the Farm Rooi Duin 100, Remaining Extent of the Farm Kliphakskeen 98, Portion 1 of the Farm Kliphakskeen 98, Remaining Extent of the Farm Kraalbosch Vlei 99, Portion 1 of the Farm Kraalbosch Vlei 99, within the Nama-Khoi Local Municipality. The site can be reached via a gravel road from the N14 (GPS: 29°34'44.11"S, 18°41'20.29"E). All six projects are located within Zone 8 (Springbok) of the Renewable Energy Development Zones (REDZ).

The proposed renewable energy facilities are separated as follows:

- FE Red Sands Solar East
- FE Red Sands Solar West
- FE Red Sands North East WEF
- FE Red Sands South East WEF
- FE Red Sands South West WEF
- FE Red Sands North West WEF

The proposed WEFs will consist of up to 207 wind turbines in total, with a generation capacity of up to 7.5 MW per turbine. Each turbine will have a hub height of up to 150m and a rotor diameter of up to 200m. The final turbine model to be utilised will only be determined closer to the time of construction, depending on the technology available at the time. Additional ancillary infrastructure would include underground and above-ground cabling between project components, onsite substation/s, Battery Energy Storage System (BESS), foundations to support turbine towers, internal/ access roads (up to 10 m in width) linking the wind turbines and other infrastructure on the site, and permanent workshop area and office for control, maintenance and storage. As far as possible, existing roads will be utilised and upgraded (where needed) with the relevant stormwater infrastructure and gates constructed as required. The perimeter of the proposed WEF may be enclosed with suitable fencing. A formal laydown area for the construction period, containing a temporary maintenance and storage building along with a guard cabin will also be established.

Additionally, the Applicant is proposing to construct a power line, with a capacity of up to 132kV that will facilitate the developments by feeding into the existing national electricity grid. This associated electrical infrastructure will require a separate Environmental Authorisation and will be conducted as a part of a separate Basic Assessment (BA) process.

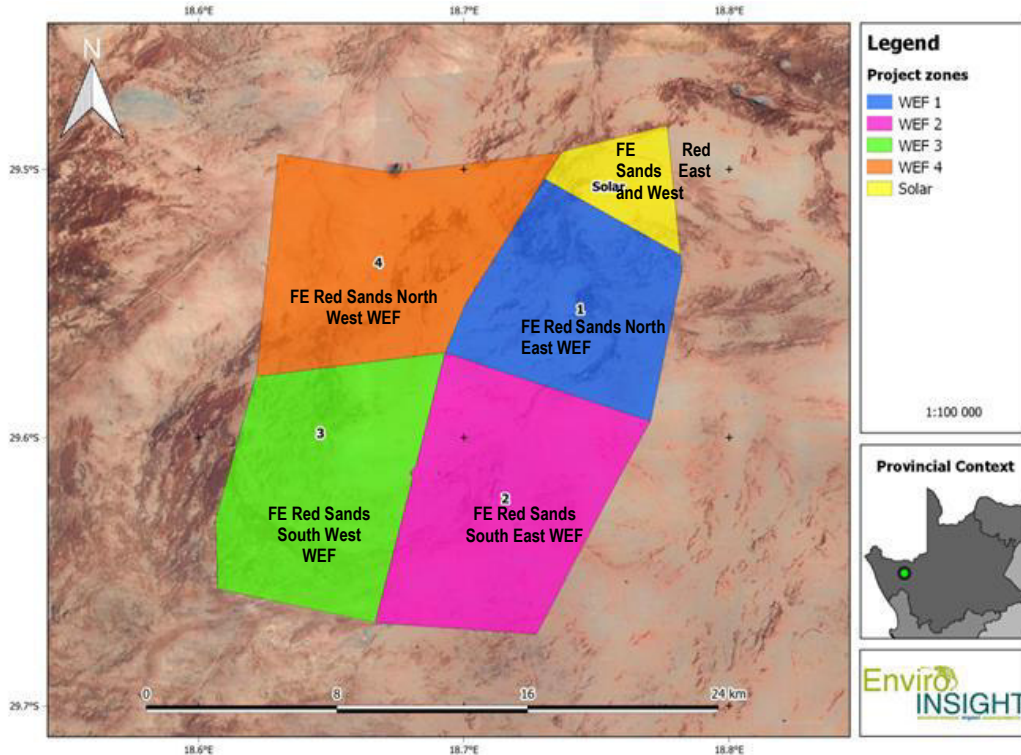


Figure 1: Locality map of the study area for the proposed Renewable Energy Developments.

Project Specific Information:

FE Red Sands North East WEF		
Farm name(s)/ Erf No	Remaining Extent of the Farm Donkerduispraat 95	
Number of Turbines	36	
Ward	Ward 4	
Local Municipality	Nama-Khoi Local Municipality	
District Municipality	Namakwa District Municipality	
Co-ordinates of the proposed site/s (DDMMSS)	Latitude (S)	Longitude (E)
Point A	29°30'15.44"S	18°43'48.93"E
Point B	29°31'57.14"S	18°46'54.32"E
Point C	29°32'19.10"S	18°46'56.11"E
Point D	29°35'37.77"S	18°46'12.85"E
Point E	29°34'5.84"S	18°41'35.44"E
Mid-Point	29°33'19.46"S	18°44'44.07"E
State the extent of proposed development	5 090 ha	
What is the current zoning and current land use of the site(s)?	Agricultural	

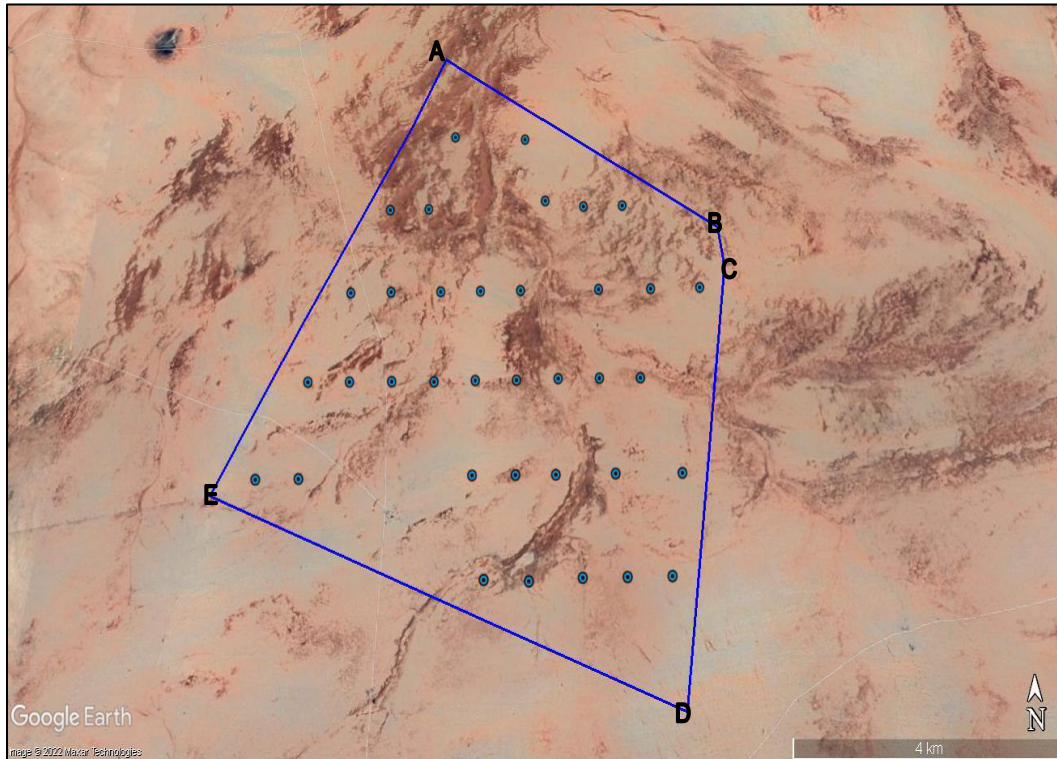


Figure 2: Locality map of the study area for Red Sands WEF 1.

FE Red Sands South East WEF		
Farm name(s)/ Erf No	Remaining Extent of the Farm Rooi Duin 101	
Number of Turbines	57	
Ward	Ward 4	
Local Municipality	Nama-Khoi Local Municipality	
District Municipality	Namakwa District Municipality	
Co-ordinates of the proposed site/s (DDMMSS)	Latitude (S)	Longitude (E)
Point A	29°34'8.48"S	18°41'33.86"E
Point B	29°35'39.00"S	18°46'12.21"E
Point C	29°40'24.08"S	18°43'38.78"E
Point D	29°40'10.12"S	18°40'0.34"E
Mid-Point	29°37'49.34"S	18°42'58.38"E
State the extent of proposed development	7 242 ha	
What is the current zoning and current land use of the site(s)?	Agricultural	

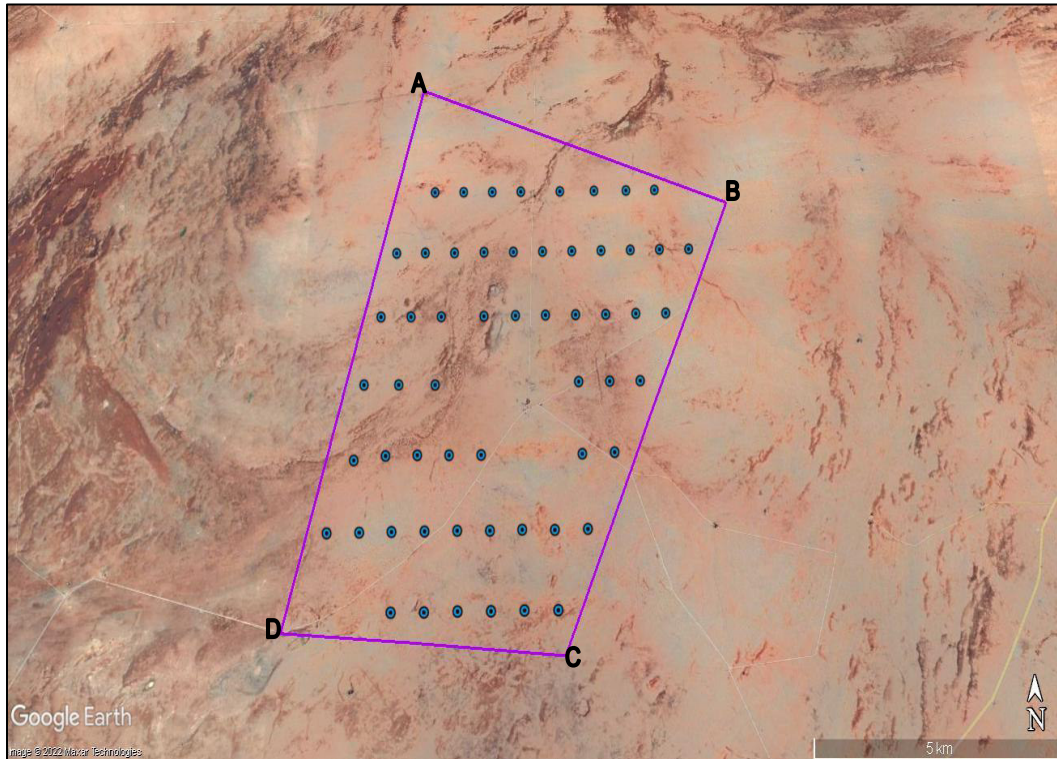


Figure 3: Locality map of the study area for Red Sands WEF 2.

FE Red Sands South West WEF		
Farm name(s)/ Erf No	Remaining Extent of the Farm Kraalbosch Vlei 99 Portion 1 of the Farm Kraalbosch Vlei 99	
Number of Turbines	53	
Ward	Ward 4	
Local Municipality	Nama-Khoi Local Municipality	
District Municipality	Namakwa District Municipality	
Co-ordinates of the proposed site/s (DDMMSS)	Latitude (S)	Longitude (E)
Point A	29°34'39.02"S	18°37'18.36"E
Point B	29°34'7.14"S	18°41'33.95"E
Point C	29°40'8.70"S	18°39'59.84"E
Point D	29°39'22.66"S	18°36'27.02"E
Point E	29°37'49.55"S	18°36'22.74"E
Mid-Point	29°37'1.77"S	18°38'48.48"E
State the extent of proposed development	6 582 ha	
What is the current zoning and current land use of the site(s)?	Agricultural	

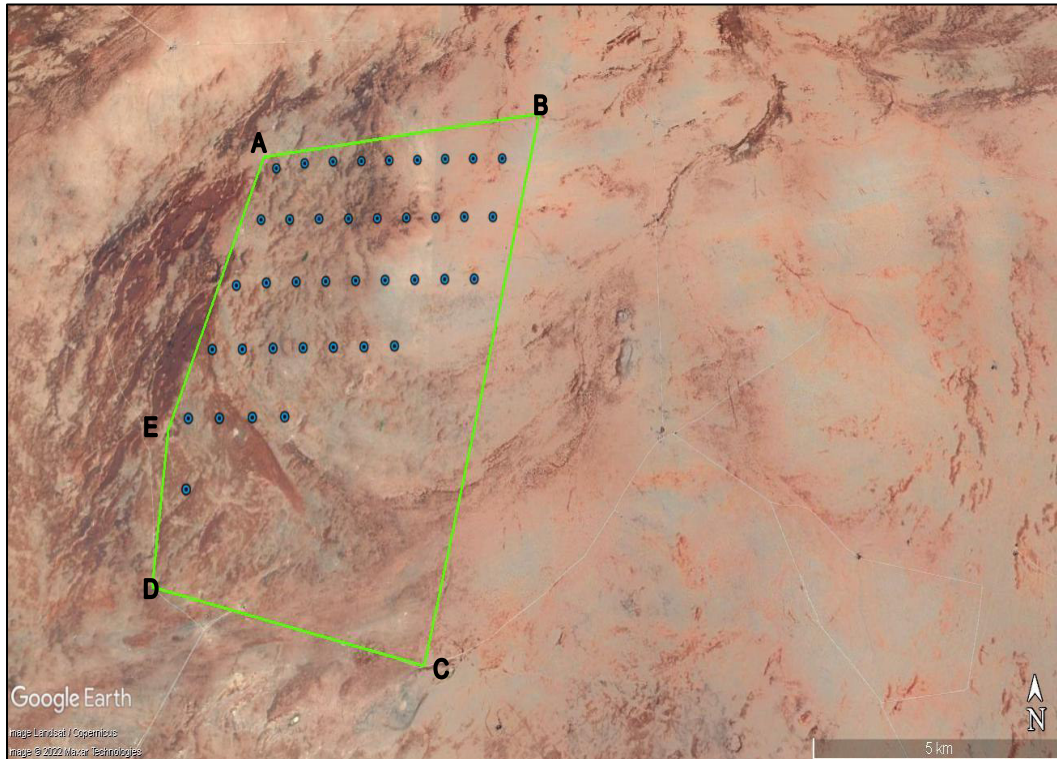


Figure 4: Locality map of the study area for Red Sands WEF 3.

FE Red Sands North West WEF		
Farm name(s)/ Erf No	Remaining Extent of the Farm Kliphakskeen 98 Portion 1 of the Farm Kliphakskeen 98	
Number of Turbines	61	
Ward	Ward 4	
Local Municipality	Nama-Khoi Local Municipality	
District Municipality	Namakwa District Municipality	
Co-ordinates of the proposed site/s (DDMMSS)	Latitude (S)	Longitude (E)
Point A	29°29'38.08"S	18°37'48.62"E
Point B	29°30'5.16"S	18°40'24.56"E
Point C	29°29'38.39"S	18°44'10.77"E
Point D	29°34'6.94"S	18°41'34.56"E
Point E	29°34'38.93"S	18°37'17.93"E
Mid-Point	29°32'13.91"S	18°40'9.08"E
State the extent of proposed development	7 020 ha	
What is the current zoning and current land use of the site(s)?	Agricultural	

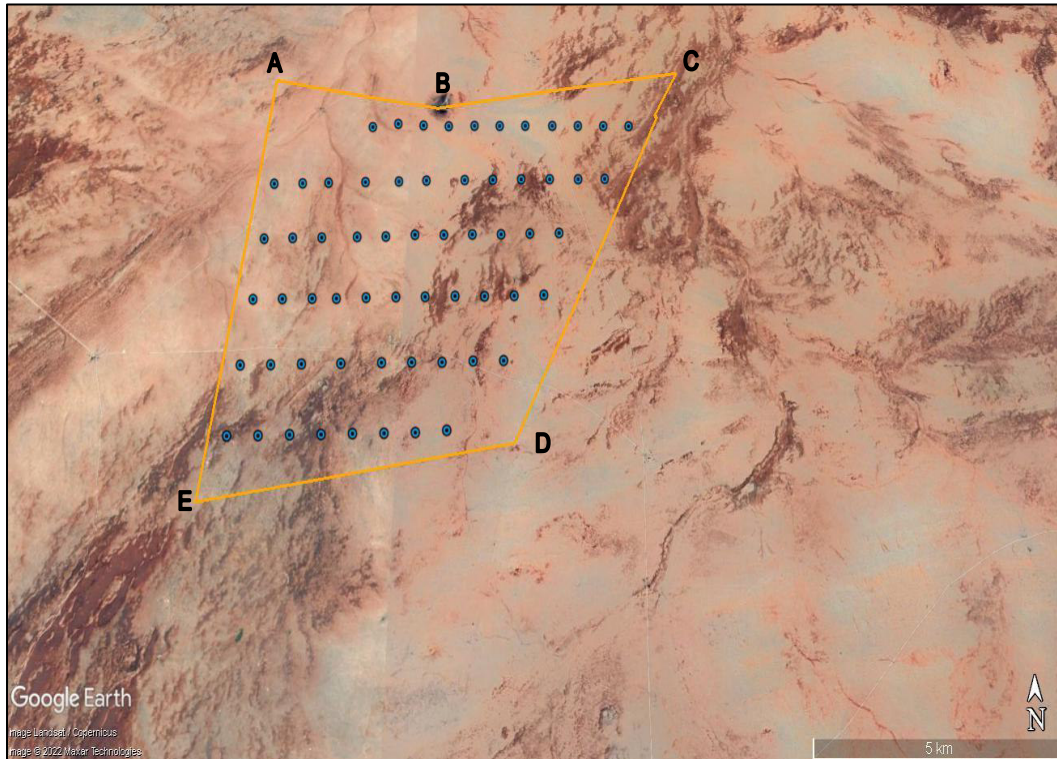


Figure 5: Locality map of the study area for Red Sands WEF 4.

Red Sands Solar East and West		
Farm name(s)/ Erf No	Remaining Extent of the Farm Donkerduispraat 95	
Ward	Ward 4	
Local Municipality	Nama-Khoi Local Municipality	
District Municipality	Namakwa District Municipality	
Co-ordinates of the proposed site/s (DDMMSS)	Latitude (S)	Longitude (E)
Point A	29°29'39.61"S	18°44'11.96"E
Point B	29°28'59.81"S	18°46'36.60"E
Point C	29°31'56.69"S	18°46'54.18"E
Point D	29°30'12.79"S	18°43'49.94"E
Mid-Point	29°30'11.03"S	18°45'38.08"E
State the extent of proposed development	1 451 ha	
What is the current zoning and current land use of the site(s)?	Agricultural	

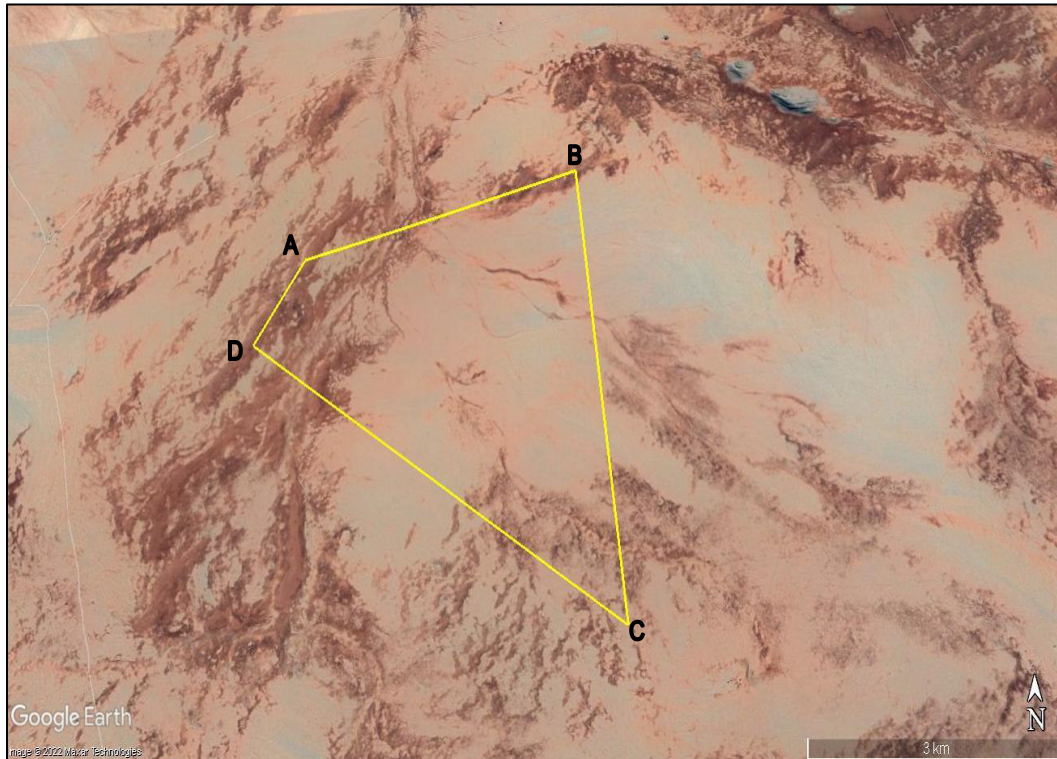


Figure 6: Locality map of the study area for Red Sands Solar.

3 LEGISLATIVE PROCESS

Section 24C(2)(a)(i) of the NEMA stipulates that the Minister of Environment must be identified as the competent authority if the activity has implications for international environmental commitments or relations and where it is identified by the Minister by notice in the Gazette. Accordingly, the National Department of Forestry, Fisheries and the Environment is the competent authority for this environmental authorisation application. The Northern Cape Department: Agriculture, Environmental Affairs, Rural Development and Land Reform will be regarded as a commenting authority.

The application will be conducted in terms of the National Environmental Management Act (Act No. 107 of 1998, as amended), the Environmental Impact Assessment Regulations (2014, as amended) and GN 114 (gazetted on 16 February 2018, as amended) of the Basic Assessment (BA) processes to be followed for the proposed construction of four wind energy facilities (WEF).

3.1 SCREENING REPORT

The Minister of Environment, Forestry and Fisheries, gave notice that the submission of a report generated from the national web-based environmental screening tool¹, as contemplated in Regulation 16(1)(b)(v) of the Environmental Impact Assessment Regulations, 2014, published under Government Notice No. R982 in Government Gazette No. 38282 of 4 December 2014, as amended, will be compulsory from 4 October 2019 when submitting an application for environmental authorisation in terms of regulation 19 and regulation 21 of the Environmental Impact Assessment Regulations, 2014.

In addition, a set of protocols that an applicant needs to adhere to in the Environmental Authorisation (EA) process were developed and on 20 March 2020 the Minister of Forestry, Fisheries and the Environment gazetted the Protocols for national implementation purposes. The gazette 'Procedures to be followed for the Assessment and Minimum Criteria for Reporting of Identified Environmental Themes in terms of Section 24(5)(a) and (h) of the National Environmental Management Act (1998) when Applying for Environmental Authorisation', has protocols that have been developed for environmental themes which include agriculture, avifauna, biodiversity (Terrestrial and Aquatic Biodiversity), noise, defence and civil aviation. On 30 October 2020, the Minister published the protocol for the Terrestrial animal and plant species themes which was accompanied by the Species Environmental Assessment Guideline (SANBI, 2020)².

The protocols set requirements for the assessment and reporting of environmental impacts of activities requiring EA. The higher the sensitivity rating of the features on the proposed site as identified by the screening tool report, the more rigorous the assessment and reporting requirements.

Based on the generated screening report, all environmental theme sensitivities are indicated in Table 3-1 below.

Table 3-1: Environmental themes from Screening Tool which needs to adhere to in the Environmental Authorisation process.

Theme	Very High sensitivity*	High sensitivity*	Medium sensitivity	Low sensitivity
Agriculture Theme				
Animal Species Theme*				
Aquatic Biodiversity Theme*				
Archaeological and Cultural Heritage Theme *				
Avian (Wind) Theme*				
Bats (Wind) Theme*				
Civil Aviation (Wind) Theme				

¹ <https://screening.environment.gov.za/screeningtool/#/pages/welcome>

² Guidelines for the implementation of the Terrestrial Fauna and Terrestrial Flora Species Protocols for environmental impact assessments in South Africa.

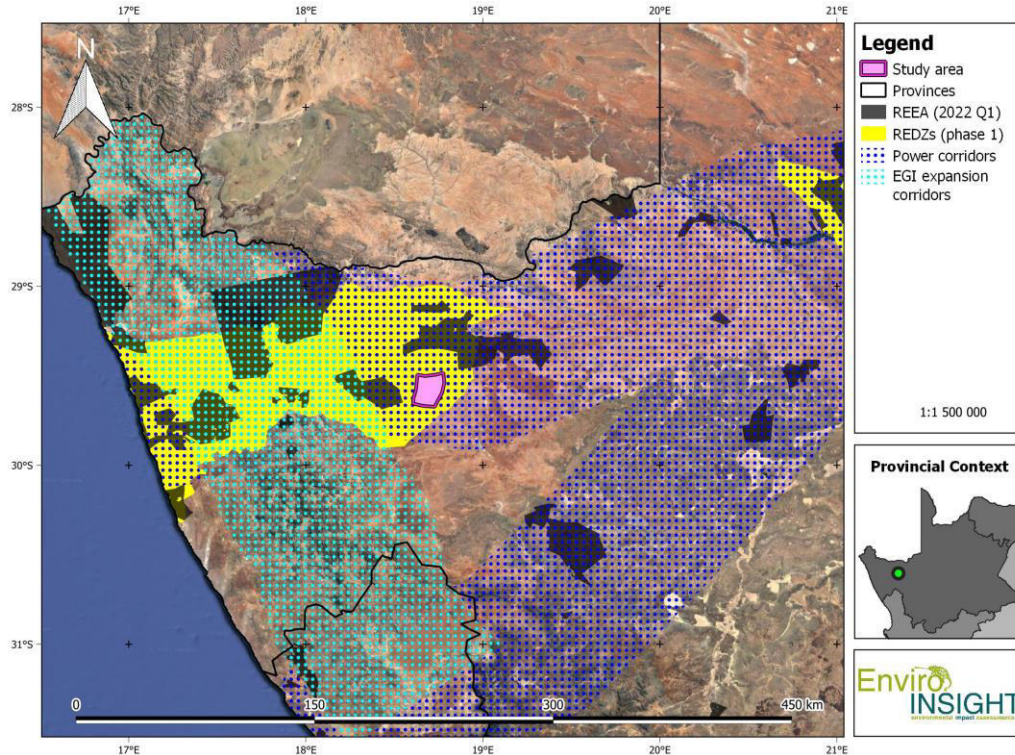


Figure 7: Locality map indicating the study area for the proposed Red Sands Renewable Energy Developments located in the RED Zone.

3.3 NEMA EIA REGULATIONS (2014, AS AMENDED)

The proposed Red Sands Renewable Energy Development constitutes various listed activities which have been listed within the scheduled activities in Government Notice EIA Regulation No 324, 325 and 327 (as amended on 7 April 2017) and therefore require a Basic Assessment (BA) process to be followed. Prior to any listed activity being approved by the DFFE, it is required that an environmental process is undertaken, and a report is submitted to the relevant environmental authority for consideration.

The purpose of the BA process is to ensure that potential environmental, economic and social impacts associated with operation and closure/ rehabilitation of a project are identified, assessed and appropriately managed.

Basic Assessment Process:

The Basic Assessment process will follow the following procedures:

- Project and baseline environmental information is collated. Baseline information for the report is gathered through visual inspections during field visits of the proposed project area and surroundings, desktop studies which include GIS mapping, and review of existing reports, guidelines and legislation.

- Landowners, adjacent landowners, local authorities, environmental authorities, as well as other stakeholders which may be affected by the project, or that may have an interest in the environmental impacts of the project are identified.
- Interested and affected parties (I&APs) are informed about the proposed project.
- Environmental authorities are consulted to confirm legal and administrative requirements.
- Environmental issues and impacts are identified and described.
- Development alternatives are identified and evaluated, and non-feasible development alternatives are eliminated.
- Specialist investigations are undertaken in accordance Appendix 6 of the EIA regulations as well as the relevant and applicable protocols;
- An evaluation of development alternatives and identification of a proposed option.
- An assessment of existing impacts (no-go development option), environmental impacts that may be associated with the proposed project option, and cumulative impacts using the impact assessment methodology.
- Identification of mitigation measures to address the environmental impacts and development of actions required to achieve the mitigation required.
- Consultation with I&APs.
- Incorporation of public comment received during the 30-day comment period.
- After the draft BAR is reviewed, comments received are incorporated in the final BAR and Environmental Management Program (EMPr) is submitted to the Competent Authority for review.
- Issuing of the final BAR for review by the Competent Authority.

The requirements for the BAR process are specifically contained in Chapter 4 Part 2 of the NEMA Reg No 326 (amended on 7 April 2017) and Appendix 1 of the regulations. The BAR process can take up to of 147 days (90 day BA process and 57 decision-making process).

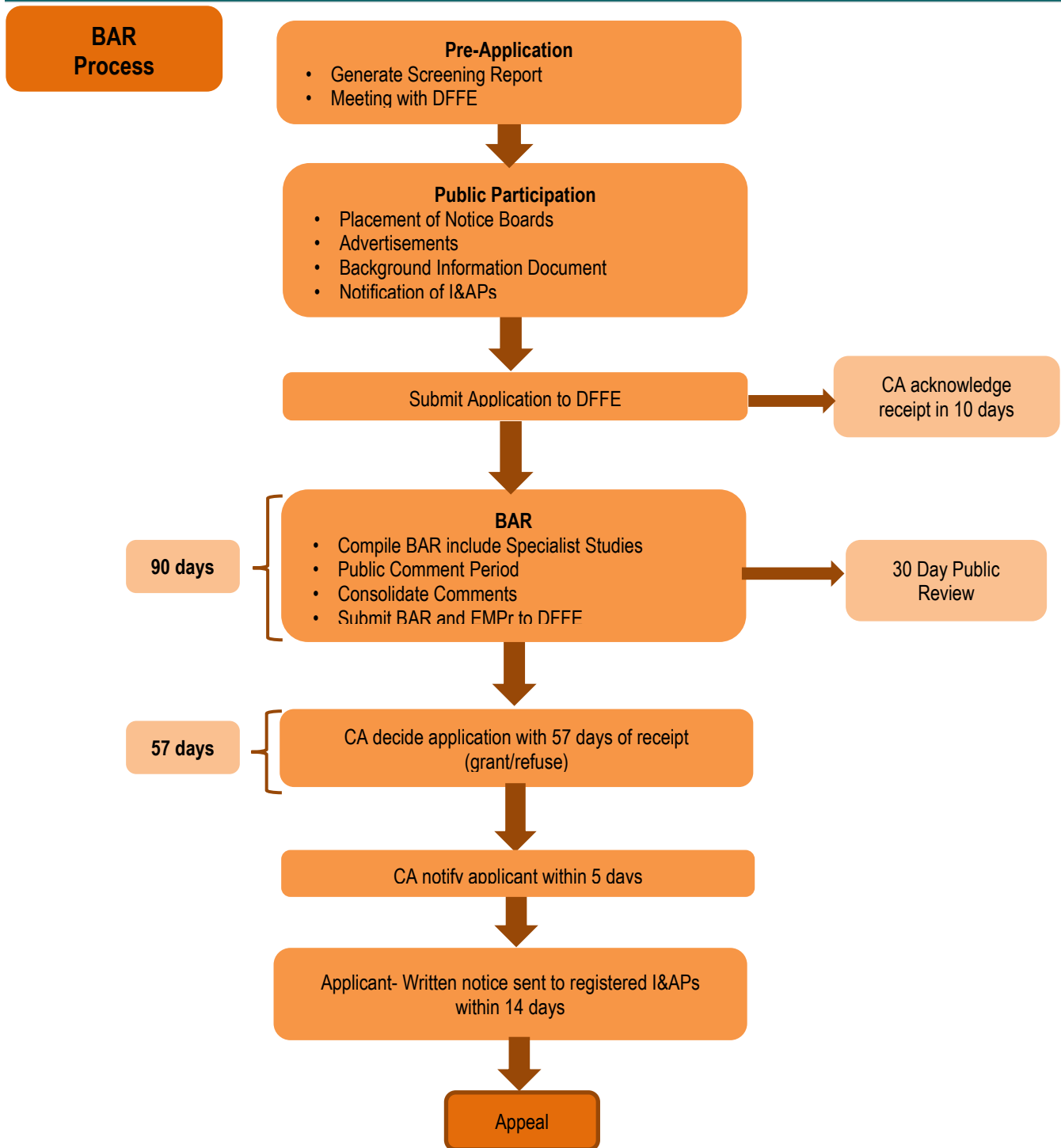


Figure 8: Basic Assessment Process.

4 SPECIALIST STUDIES

Specialist studies as per the screening report and national protocols to assess the environmental impacts:

- Aquatic Biodiversity Assessment;
- Terrestrial Biodiversity Assessment;
- Sensitive Plant Species Assessment;
- Sensitive Animal Species Compliance Statement;
- Avifauna pre-construction monitoring and Impact Assessment;
- Bat pre-construction monitoring and Impact Assessment;
- Noise Assessment;
- Agricultural Compliance Statement;
- Visual and Flicker Impact Assessment;
- Traffic and Transportation Impact Assessment;
- Socio-economic Assessment;
- Heritage Impact Assessment; and
- Paleontological Desktop Assessment.

5 PUBLIC PARTICIPATION PROCESS

5.1 OBJECTIVES OF PUBLIC PARTICIPATION (PP)

- Provides Interested and Affected Parties (I&APs) with an opportunity to voice their support, concerns and questions regarding the project, application or decision;
- Provides an opportunity for I&APs, EAP and the Competent Authority (CA) to obtain clear, accurate and understandable information about the environmental, social and economic impacts of the proposed activity or implications of a decision;
- Provides I&APs with the opportunity of suggesting ways of reducing or mitigating negative impacts of an activity and for enhancing positive impacts
- Enables the applicant to incorporate the needs, preferences and values of affected parties into the application;

5.2 LEGISLATION

The PP Process must comply with the several important sets of legislation that require public participation as part of an application for authorisation or approval; namely:

- The National Environmental Management Act (Act No. 107 of 1998 - NEMA);
- The EIA Regulations (2014, as amended) and

- Guidelines for Public Participation (2017)

Adherence to the requirements of the above-mentioned Acts and Regulations will allow for effective PPP to be conducted, and in so doing, satisfy the requirement for public participation referenced in the Acts.

The details of the PP Process are provided below.

5.2.1 Identification of I&APs

An I&AP database will be compiled of key stakeholders and I&AP's identified for notification of the Environmental Authorisation Application. The I&AP database includes, amongst others; landowners, affected communities, regulatory authorities and other specialist interest groups.

5.3 NOTIFICATION OF AVAILABILITY OF BASIC ASSESSMENT REPORT

The Draft Basic Assessment (DBAR) will be available to stakeholders and I&APs for a period of 30 days to review and provide comments. All registered I&APs will be notified via email of the availability of the DBAR. Electronic copies can be obtained from the Enviro-Insight website: <http://www.enviro-insight.co.za/download-it/project-downloads/>.

Comments raised by stakeholders will assist in informed decision-making for authorities and provides information to be considered by the project team and specialists conducting studies.

REGISTRATION AND COMMENT FORM

September 2022

Registered Interested and Affected Parties (I&APs) will be informed of ongoing developments. The draft Basic Assessment Report will be available for comment on <http://www.enviro-insight.co.za/download-it/project-downloads/> and all registered I&APs will be notified of its availability in an announcement letter.

Comments raised by stakeholders will assist in informed decision-making for authorities and provides information to be considered by the project team and specialists conducting the Basic Assessment process. Please register as an I&AP and provide comments by sending this form, or other written correspondence, to the contact details provided below:

Enviro-Insight CC

Reference: Red Sands WEF and SEF

Attention: Ms Ronell Kuppen & Mr Corné Niemandt

Tel: 012 807 0637

Email: ronell@enviro-insight.co.za / corne@enviro-insight.co.za

www.enviro-insight.co.za

Postal address:

Unit 8, Oppidraai Office Park

862 Wapadrand Rd

Wapadrand Security Village

Pretoria 0081

Please fill in your contact details below for the project database

Project Name			
Title, Full Name			
Designation			
Cellphone	Tel	Fax	
Email			
Postal Address			Code

Please indicate which sector you represent and also provide a name (if applicable)

Landowner	
Government Department	
Municipality	
Community	
Non-Government Organisation	
Business	

If you are a landowner or land occupier, please indicate which farm(s) and portion(s) you reside on, as well as the number of people living on the property.

	Farm portion and name	Number of people
Landowner		
Land occupier		

Please complete the questions below to assist with the stakeholder engagement process:

How do you think the project might impact (affect) you?
If you are a landowner or occupier, what is your land currently being used for?
How do you think the project might impact (affect) the socio-economic or biophysical conditions of the area?
Suggest ways that these impacts can be managed or mitigated, or avoided?
Are there any environmental, social or heritage features on the proposed project area we need to be aware of? If possible, please indicate these locations on a map or by providing GPS coordinates.

General Comments

Please sign this document to confirm receipt of this document as well as to verify that the information you provided herein are correct. The information will be captured in the Project database and will ensure that your comments and concerns are captured. By sharing your personal information with EI, by registering for this project, you provide consent for EI to keep and use it for purposes of public participation for the environmental assessment process only. No personal information will be made publicly available, but the information will be shared with the competent authority.

Signature: **Name:** **Date:**

If there are any other stakeholders we should include onto the stakeholder database for the proposed project, please forward this BID to them or please provide their contact details (with their permission).

Title, Full Name			
Cellphone	Tel	Fax	
Email			

Title, Full Name			
Cellphone	Tel	Fax	
Email			

Title, Full Name			
Cellphone	Tel	Fax	
Email			

Title, Full Name			
Cellphone	Tel	Fax	
Email			

Appendix E4: Interested and Affect Parties List



REGISTERED INTERESTED AND AFFECTED PARTIES

Please include all authorities as well as attendees from the public meeting

PROJECT TITLE: Red Sands Solar

CONTACT	NAME
Client	EnergyTeam
Competent Authority Department of Environment, Forestry and Fisheries (DEFF)	Azrah Essop/ Lerato Mokoena/ Wayne Hector
Northern Cape Department of Agriculture, Environmental Affairs, Rural Development and Land Reform	Brian Fisher/Peter Cloete/Aviwe Nyakaza/Conrad Geldenhuys/Elsabe Swart
Department of Agriculture, Land Reform and Rural Development (DALRRD)	Itumeleng Mashune/ Ntanganedzeni Ramasunz/ Zongezile Bango/ Magezi Mhlanga
Department of Mineral Resources and Energy	Jasper Nieuwoudt/ Ndlelenhle Zindela
Department of Energy: Clean Energy Directorate	Mokgadi Modise/ Pheladi Masipa/ Niveshen Govender/ Noma Qase
Eskom	John Geeringh/ Carol Streaton/ Mpilo Masondo/ Pumza Jizana/ Martina Phiri
Department of Roads and Public Works	Kholekile Nogwili/ R Van Hinsbergen
Northern Cape Department: Transport, Safety and Liaison (DTSL) Namakwa District Office	Mr Sekia
Department of Water and Sanitation	Shaun Cloete/ A Abrahams/ Darril Daniels/ Gawie van Dyk
Department of Defence	Colonel Loy de Jager/ General Fordred
South African Civil Aviation Authority	Lizell Stroh/Gugulethu Khanyile
Air Traffic and Navigation Services (ATNS)	Obstacle Evaluator
Endangered Wildlife Trust (EWT) – Wildlife & Energy Programme Manager	L Leeuwener

Heritage Authority South African Heritage Resources Agency (SAHRA) / Northern Cape Heritage Resources Authority (NCHRA)	Natasha Higgit/ Phillip Hine
BirdlifeSA	Samantha Ralston-Paton
South African Bat Assessment Association (SABAA)	Dr Caroline Lötter/ Eleanor J. (Kate) Richardson
SANRAL	Coleen Runkel
Nama-Khoi Local Municipality	Mr Deon Magerman
Khâi-Ma Local Municipality	Edward Cloete
Namakwa District Municipality	Christiaan Fortuin
Ward 4 Councillor	Mr Rodney Kritzingen
Community Assosiation	
Newspaper	Die Plattelander

Appendix E5: Communication





Ronell Kuppen <ronell@enviro-insight.co.za>

Proposed Red Sands Renewable Energy Projects located near Aggeneys, in the Northern Cape

Ronell Kuppen <ronell@enviro-insight.co.za>

11 October 2022 at 10:26

Cc: Corné Niemandt <corne@enviro-insight.co.za>

Bcc: Azrah Essop <AEssop@dffe.gov.za>, LMOKOENA@dffe.gov.za, WHECTOR@dffe.gov.za, johanjonk1@vodamail.co.za, bfisher@ncpg.gov.za, judyscholtz@ncpg.gov.za, dmoleko@ncpg.gov.za, "Peter.denc87@gmail.com" <peter.denc87@gmail.com>, "aviwenyakaza.denc@gmail.com" <aviwenyakaza.denc@gmail.com>, "c.geldenhuis@hotmail.com" <c.geldenhuis@hotmail.com>, "elsabe.dtec@gmail.com" <elsabe.dtec@gmail.com>, Itumeleng.Mashune@drdlr.gov.za, ngoltz@ncpg.co.za, cfortune@agri.ncape.gov.za, darrenlengelbrecht@gmail.com, Ntanganedzeni.Ramasunzi@drdlr.gov.za, magezi.mhlanga@drdlr.gov.za, zongezile.bango@drdlr.gov.za, Jasper.Nieuwoudt@dmr.gov.za, Ndlelenhle.zindela@dmr.gov.za, Mokgadi.modise@energy.gov.za, Noma.Qase@energy.gov.za, Niveshen.Govender@energy.gov.za, Pheladi.Masipa@energy.gov.za, john.geeringh@eskom.co.za, carol.streaton@eskom.co.za, mpilo.masondo@eskom.co.za, jizanaP@eskom.co.za, phiriM@eskom.co.za, wpike@ncpg.gov.za, cloetes@dws.gov.za, abrahamsA@dwa.gov.za, DanielsD@dws.gov.za, VanDykG@dws.gov.za, loydejager@hotmail.com, cnian.fordred@dod.mil.za, Strohl@caa.co.za, Khanyileg@caa.co.za, Obstacles@atns.co.za, obstacleevaluators@atns.co.za, lourensl@ewt.org.za, Natasha Higgitt <nhiggitt@sahra.org.za>, energy@birdlife.org.za, caroline@iws-sa.co.za, chair@sabaa.org.za, Runkelc@nra.co.za, deon.magerman@namakhoi.gov.za, monique.kleinbooi@namakhoi.gov.za, munman@khaima.gov.za, chrisf@namakwa-dm.gov.za, munmansek@namakwa-dm.gov.za, leandra.vries@namakhoi.gov.za, hommelmroux@gmail.com, krymekaar@gmail.com, nbrand303@gmail.com, nicol@schreuders-attorneys.co.za, neljh11@telkomsa.net, dabeep@gmail.com, vries@khaima.gov.za, ajengelbrecht@vedantaresources.co.za, Dreull De Beer <dreull@wfa.africa>

Dear Interested and Affected Parties (I&APs),

Enviro-Insight has been appointed as the independent Environmental Consultancy to undertake the Environmental Impact Assessments for the proposed Renewable Energy Projects, in the Northern Cape, to be known as the Red Sands Wind Energy and Solar Energy Facilities.

FE Red Sands (Pty) Ltd proposes the development of four (4) wind energy facilities (WEF) and two Solar Energy Facilities (SEF) and its associated infrastructure on sites located approximately 77 km southwest of Pofadder and 81 km east of Springbok. The sites are located within Ward 4 of the Nama-Khoi Local Municipality, in the Northern Cape Province of South Africa.

The proposed renewable energy facilities are as follows:

- FE Red Sands Solar East
- FE Red Sands Solar West
- FE Red Sands North East WEF
- FE Red Sands South East WEF
- FE Red Sands South West WEF
- FE Red Sands North West WEF

Please find attached the Notification of the Application and the Background Information Document for the proposed Renewable Energy Projects.

Should you have any queries please do not hesitate to contact us.

Kind Regards

Ronell Kuppen
Senior Environmental Consultant
www.enviro-insight.co.za

3 attachments



Red Sands WEF & SEF - Notice of Application.pdf
182K



Red Sands WEF & SEF- Notice of Application Afrikaans .pdf
199K



Red Sands_BID_October 2022.pdf

1268K

Appendix E6: Comments and Response Report



Project: Red Sands Renewable Energy Projects					
Interested and Affected Party		Date of Comment Received	Issues or comments raised	EAPs response	
Name	Designation				
Comments / letters received before submission of draft BAR					
1	D'Reull de Beer	Facilitator: Northern Cape Land Project Wilderness Foundation	27 September 2022	<p>Good day Ronell,</p> <p>Wilderness Foundation Africa (WFA) hereby requests to be registered as an Interested and Affected Part (I & AP) with regards to the application by FE Red Sands (Pty) Ltd for Environmental Authorisation for the proposed FE Red Sands renewable energy development, southwest of Aggeneys.</p> <p>Please notify in writing the registration of WFA as an I & AP along with all relevant information, including the Draft Basic Assessment Report and Background Information Document.</p> <p>Kind Regards,</p>	<p>Good Morning D'Reull ,</p> <p>Thank you for your correspondence.</p> <p>This email serves as confirmation of the Wilderness Foundation Africa registration on all Red Sands projects.</p> <p>Enviro-Insight will keep you updated on all environmental processes relating to the project moving forward.</p> <p>Thank you</p>
2	Lourens Leeuwner	Senior Conservation Manager: Business and Wildlife Endangered Wildlife Trust	11 October 2022	<p>Good day</p> <p>Going forward, please send all correspondence to eia@ewt.org.za, and remove me from the list. Thanks!</p>	<p>Good Afternoon Lourens,</p> <p>Thank you for the feedback.</p> <p>We will update the I&Ap register accordingly and remove your email address from the mail list.</p> <p>Thank you</p>
3	John Geeringh	Senior Consultant Environmental Management Grid Planning: Land and Rights Eskom Transmission Division	11 October 2022	<p>Please find attached Eskom requirements or work at or near Eskom infrastructure and servitudes, as well as a renewable energy setbacks guideline. Please send me a KMZ file of the affected properties, proposed development areas and proposed grid connection.</p> <p>(Please refer to Appendix E for the Eskom work requirements)</p>	<p>Good Afternoon John,</p> <p>I hope that this email finds you well.</p> <p>Kindly find attached the most updated kml for the 6 proposed renewable energy developments.</p> <p>Please note in regards to the Grid Connection, although it is included in this kml, it has yet to be finalised as it is awaiting consultation with the landowners and Eskom. The Grid connection has been excluded from these 6 applications.</p> <p>Should you have any queries please do not hesitate to contact me.</p> <p>Thank you</p>
			12 October 2022	Thanks	

Project: Red Sands Renewable Energy Projects

Interested and Affected Party		Date of Comment Received	Issues or comments raised	EAPs response
Name	Designation			
4	Yanga Nofuma	Obstacle Administrator COO - Air Traffic Services Bruma	<p>11 October 2022</p> <p>Good day Ronell,</p> <p>RE: Proposed Solar PV Facility</p> <p>This is to acknowledge that ATNS has received your query.</p> <p>Below is the criteria for obstacle evaluation according to the regulations:</p> <p>If the Solar PV installation is equal to or bigger than 5000 square meters;</p> <p>If the Solar PV installation falls within a 8km radius around any aerodrome/airstrip or helipad;</p> <p>If the Solar PV installation falls within the Approach and Departure area of any aerodrome/airstrip or helipad and</p> <p>If the Solar PV installation falls within 3km radius of any aerodrome/airstrip or helipad a glint and glare assessment is required from the applicant.</p> <p>*Please Note the above is requirements for aviation purposes but if your development does fall outside of the above and you still need approval or letter based on other departments within the EIA process, you will still need to apply for assessments before we or the CAA can issue this approval or letter.</p> <p>Kindly note that ATNS charge for the assessment, and before the process start our Business Development department will forward a proposal to the client.</p> <p>The proposal and payment process are as follows if applicable:</p> <p>You will receive the proposal from our Business Development department, it will contain the work that will be done as well as what it will cost.</p> <p>They will provide you with all the information needed to make payment. For this reason, please provide a billing address and the details of the person to whom the proposal should be addressed.</p> <p>We will start with the assessments when our Business Development department received an accepted and signed proposal back from the client.</p>	<p>The Applicant will commence with communication with ATNS regarding the procedure. The site is not located within any aerodrome/airstrip or helipad.</p>

Project: Red Sands Renewable Energy Projects

Interested and Affected Party		Date of Comment Received	Issues or comments raised	EAPs response	
Name	Designation				
			<p>We will conduct an assessment to evaluate whether the proposed structures will affect the safety of flight for aerodromes in close vicinity as well as communication, navigation and surveillance (CNS) equipment.</p> <p>Please see required information below before we can proceed with our assessment:</p> <ul style="list-style-type: none"> • Elevation above mean sea level • Coordinate list for each structure - WGS84 (degrees, min and sec – S302515.32 E0180102.52) • A KMZ file with the positions of the proposed structures. • We also require the dimensions/specs of the structures. • Height to the top of structure. • A Glint and Glare assessment report (if it is within the 3km radius of any aerodrome/airstrip or helipad). • If there will be power lines erected, and/or a substation the position and heights for each structure (Pole/substation) must be provided. <p>This whole process can take up to 120 working days' minimum that will commence after the proposal is accepted, signed and received by our Business Development department.</p> <p>Please note that ATNS also liaise with the South Africa Civil Aviation Authority (SACAA) and will provide the client with the conditional/final approval from the SACAA.</p> <p>The client will have to liaise with SACAA to finalise the "As build" and for any queries with the lighting.</p> <p>Regards,</p>		
5	Kathryn Winstanley	Environmental Project Developer G7 Renewable Energies (Pty) Ltd	1 November 2022	<p>Dear Marvin,</p> <p>I trust you are well.</p> <p>Could I please request that Caryn Clarke with e-mail address eia@g7energies.com be registered as an I&AP for the proposed Red Sands East and West Solar Energy Facilities, as well as the proposed Red Sands North East, North West, South East, and South West Wind</p>	<p>Good Morning Ms Winstanley,</p> <p>Thank you for your interest in the project,</p> <p>Kindly note that you have been registered as an I&AP and you will be kept updated on the progress of the applications.</p> <p>Thank you</p>

Project: Red Sands Renewable Energy Projects

Interested and Affected Party		Date of Comment Received	Issues or comments raised	EAPs response
Name	Designation			
			<p>Energy Facilities. Could I also ask that relevant documents be sent through, if there are any available.</p> <p>Could you please reply with confirmation of registration.</p> <p>Thank you very much. With kind regards,</p>	

Appendix E7: Comments





Ronell Kuppen <ronell@enviro-insight.co.za>

FE Red Sands: Request to be registered as I & AP

2 messages

Dreull De Beer <dreull@wfa.africa>

27 September 2022 at 08:26

To: "ronell@enviro-insight.co.za" <ronell@enviro-insight.co.za>

Cc: Kerry Purnell <kerry@wfa.africa>, Matthew Norval <matthew@wfa.africa>, Ben-Jon Dreyer <ben-jon@wfa.africa>

Good day Ronell,

Wilderness Foundation Africa (WFA) hereby requests to be registered as an Interested and Affected Part (I & AP) with regards to the application by FE Red Sands (Pty) Ltd for Environmental Authorisation for the proposed FE Red Sands renewable energy development, southwest of Aggeneys.

Please notify in writing the registration of WFA as an I & AP along with all relevant information, including the Draft Basic Assessment Report and Background Information Document.

Kind Regards,

D'Reull de Beer*Facilitator: Northern Cape Land Project*

M: +27 (0)82 485 2961

E: dreull@wfa.africa

www.wfa.africa

Ronell Kuppen <ronell@enviro-insight.co.za>

27 September 2022 at 11:53

To: Dreull De Beer <dreull@wfa.africa>

Cc: Kerry Purnell <kerry@wfa.africa>, Matthew Norval <matthew@wfa.africa>, Ben-Jon Dreyer <ben-jon@wfa.africa>, Corné Niemandt <corne@enviro-insight.co.za>

Good Morning D'Reull ,

Thank you for your correspondence.

This email serves as confirmation of the Wilderness Foundation Africa registration on all Red Sands projects.

Enviro-Insight will keep you updated on all environmental processes relating to the project moving forward.

Thank you

Kind Regards

Ronell Kuppen
Senior Environmental Consultant
www.enviro-insight.co.za

Kind Regards

Ronell Kuppen
Senior Environmental Consultant
www.enviro-insight.co.za

On Tue, 27 Sept 2022 at 08:26, Dreull De Beer <dreull@wfa.africa> wrote:

>
> Good day Ronell,
>
>
>
> Wilderness Foundation Africa (WFA) hereby requests to be registered as an Interested and Affected Part (I & AP) with regards to the application by FE Red Sands (Pty) Ltd for Environmental Authorisation for the proposed FE Red Sands renewable energy development, southwest of Aggeneys.
>
>
>
> Please notify in writing the registration of WFA as an I & AP along with all relevant information, including the Draft Basic Assessment Report and Background Information Document.
>
>
>
> Kind Regards,
>
>
>
> D'Reull de Beer
> Facilitator: Northern Cape Land Project
>

[Quoted text hidden]



Ronell Kuppen <ronell@enviro-insight.co.za>

Proposed Red Sands Renewable Energy Projects located near Aggeneys, in the Northern Cape

Ronell Kuppen <ronell@enviro-insight.co.za>
To: Lourens Leeuwner <lourensl@ewt.org.za>
Cc: Corné Niemandt <corne@enviro-insight.co.za>

11 October 2022 at 15:43

Good Afternoon Lourens,

Thank you for the feedback.

We will update the I&Ap register accordingly and remove your email address from the mail list.

Thank you
Kind Regards

Ronell Kuppen
Senior Environmental Consultant
www.enviro-insight.co.za

On Tue, 11 Oct 2022 at 14:11, Lourens Leeuwner <lourensl@ewt.org.za> wrote:

Good day

Going forward, please send all correspondence to eia@ewt.org.za , and remove me from the list. Thanks!

Regards

Lourens Leeuwner

Senior Conservation Manager: Business and Wildlife

Endangered Wildlife Trust

W +27 21 7998460 | **C** +27 72 775 5111

Email: lourensl@ewt.org.za | **Web:** www.ewt.org.za | **Skype:** lourenslleeu

Physical Address: Office 31 & 32, CBC building, SANBI, 99 Rhodes drive, Newlands, Cape Town, 7700

Postal Address: Postnet Suite # 027, Postnet Suite 002, Private Bag X08, Wierda Park 0149, Gauteng, South Africa



Broad-Based Black Economic Empowerment – BBBEE Level 4 Certificate & 95% Civil Society Organisation

PBO number: 930 001 777

NPO number: 015-502 NPO

IT number: IT 6247



This E-mail message and its attachments are subject to the disclaimer published at <http://www.ewt.org.za>

From: Ronell Kuppen <ronell@enviro-insight.co.za>
Sent: Tuesday, 11 October 2022 10:27
Cc: Corné Niemandt <corne@enviro-insight.co.za>
Subject: Proposed Red Sands Renewable Energy Projects located near Aggeneys, in the Northern Cape

Mimecast Attachment Protection has deemed this file to be safe, but always exercise caution when opening files.

Dear Interested and Affected Parties (I&APs),

Enviro-Insight has been appointed as the independent Environmental Consultancy to undertake the Environmental Impact Assessments for the proposed Renewable Energy Projects, in the Northern Cape, to be known as the Red Sands Wind Energy and Solar Energy Facilities.

FE Red Sands (Pty) Ltd proposes the development of four (4) wind energy facilities (WEF) and two Solar Energy Facilities (SEF) and its associated infrastructure on sites located approximately 77 km southwest of Pofadder and 81 km east of Springbok. The sites are located within Ward 4 of the Nama-Khoi Local Municipality, in the Northern Cape Province of South Africa.

The proposed renewable energy facilities are as follows:

- FE Red Sands Solar East
- FE Red Sands Solar West
- FE Red Sands North East WEF
- FE Red Sands South East WEF
- FE Red Sands South West WEF
- FE Red Sands North West WEF

Please find attached the Notification of the Application and the Background Information Document for the proposed Renewable Energy Projects.

Should you have any queries please do not hesitate to contact us.

Kind Regards

Ronell Kuppen
Senior Environmental Consultant

www.enviro-insight.co.za



Ronell Kuppen <ronell@enviro-insight.co.za>

RE: [CAUTION:EXTERNAL EMAIL] - Proposed Red Sands Renewable Energy Projects located near Aggeneys, in the Northern Cape

John Geeringh <GeerinJH@eskom.co.za>
To: Ronell Kuppen <ronell@enviro-insight.co.za>
Cc: Corné Niemandt <corne@enviro-insight.co.za>

12 October 2022 at 14:44

Thanks

John

From: Ronell Kuppen <ronell@enviro-insight.co.za>
Sent: Wednesday, 12 October 2022 14:33
To: John Geeringh <GeerinJH@eskom.co.za>
Cc: Corné Niemandt <corne@enviro-insight.co.za>
Subject: Re: [CAUTION:EXTERNAL EMAIL] - Proposed Red Sands Renewable Energy Projects located near Aggeneys, in the Northern Cape

Good Afternoon John,

I hope that this email finds you well.

Kindly find attached the most updated kml for the 6 proposed renewable energy developments.

Please note in regards to the Grid Connection, although it is included in this kml, it has yet to be finalised as it is awaiting consultation with the landowners and Eskom. The Grid connection has been excluded from these 6 applications.

Should you have any queries please do not hesitate to contact me.

Thank you

Kind Regards

Ronell Kuppen

Senior Environmental Consultant

www.enviro-insight.co.za

On Tue, 11 Oct 2022 at 10:45, John Geeringh <GeerinJH@eskom.co.za> wrote:

Should you have any queries please do not hesitate to contact us.

Kind Regards

Ronell Kuppen

Senior Environmental Consultant

www.enviro-insight.co.za

NB: This Email and its contents are subject to the Eskom Holdings SOC Ltd EMAIL LEGAL NOTICE which can be viewed at http://www.eskom.co.za/Pages/Email_Legal_Spam_Disclaimer.aspx

NB: This Email and its contents are subject to the Eskom Holdings SOC Ltd EMAIL LEGAL NOTICE which can be viewed at http://www.eskom.co.za/Pages/Email_Legal_Spam_Disclaimer.aspx

TO WHOM IT MAY CONCERN

Eskom requirements for work in or near Eskom servitudes.

1. Eskom's rights and services must be acknowledged and respected at all times.
2. Eskom shall at all times retain unobstructed access to and egress from its servitudes.
3. Eskom's consent does not relieve the developer from obtaining the necessary statutory, land owner or municipal approvals.
4. Any cost incurred by Eskom as a result of non-compliance to any relevant environmental legislation will be charged to the developer.
5. If Eskom has to incur any expenditure in order to comply with statutory clearances or other regulations as a result of the developer's activities or because of the presence of his equipment or installation within the servitude restriction area, the developer shall pay such costs to Eskom on demand.
6. The use of explosives of any type within 500 metres of Eskom's services shall only occur with Eskom's previous written permission. If such permission is granted the developer must give at least fourteen working days prior notice of the commencement of blasting. This allows time for arrangements to be made for supervision and/or precautionary instructions to be issued in terms of the blasting process. It is advisable to make application separately in this regard.
7. Changes in ground level may not infringe statutory ground to conductor clearances or statutory visibility clearances. After any changes in ground level, the surface shall be rehabilitated and stabilised so as to prevent erosion. The measures taken shall be to Eskom's satisfaction.
8. Eskom shall not be liable for the death of or injury to any person or for the loss of or damage to any property whether as a result of the encroachment or of the use of the servitude area by the developer, his/her agent, contractors, employees, successors in title, and assignees. The developer indemnifies Eskom against loss, claims or damages including claims pertaining to consequential damages by third parties and whether as a result of damage to or interruption of or interference with Eskom's services or apparatus or otherwise. Eskom will not be held responsible for damage to the developer's equipment.
9. No mechanical equipment, including mechanical excavators or high lifting machinery, shall be used in the vicinity of Eskom's apparatus and/or services, without prior written permission having been granted by Eskom. If such permission is granted the developer must give at least seven working days' notice prior to the commencement of work. This allows time for arrangements to be made for supervision and/or precautionary instructions to be issued by the relevant Eskom Manager

Note: Where and electrical outage is required, at least fourteen work days are required to arrange it.

10. Eskom's rights and duties in the servitude shall be accepted as having prior right at all times and shall not be obstructed or interfered with.
11. Under no circumstances shall rubble, earth or other material be dumped within the servitude restriction area. The developer shall maintain the area concerned to Eskom's satisfaction. The developer shall be liable to Eskom for the cost of any remedial action which has to be carried out by Eskom.
12. The clearances between Eskom's live electrical equipment and the proposed construction work shall be observed as stipulated by *Regulation 15* of the *Electrical Machinery Regulations of the Occupational Health and Safety Act, 1993 (Act 85 of 1993)*.
13. Equipment shall be regarded electrically live and therefore dangerous at all times.
14. In spite of the restrictions stipulated by Regulation 15 of the Electrical Machinery Regulations of the Occupational Health and Safety Act, 1993 (Act 85 of 1993), as an additional safety precaution, Eskom will not approve the erection of houses, or structures occupied or frequented by human beings, under the power lines or within the servitude restriction area.
15. Eskom may stipulate any additional requirements to highlight any possible exposure to Customers or Public to coming into contact or be exposed to any dangers of Eskom plant.
16. It is required of the developer to familiarise himself with all safety hazards related to Electrical plant.
17. Any third party servitudes encroaching on Eskom servitudes shall be registered against Eskom's title deed at the developer's own cost. If such a servitude is brought into being, its existence should be endorsed on the Eskom servitude deed concerned, while the third party's servitude deed must also include the rights of the affected Eskom servitude.

John Geeringh (Pr Sci Nat)(EAPASA)
Senior Consultant Environmental Management
Eskom Transmission Division: Land & Rights
Megawatt Park, D1Y42, Maxwell Drive, Sunninghill, Sandton.
P O Box 1091, Johannesburg, 2000.
Tel: 011 516 7233
Cell: 083 632 7663
Fax: 086 661 4064
E-mail: john.geeringh@eskom.co.za

2.3 DEFINITIONS

Definition	Description
Setback	The minimum distance between a wind turbine and boundary line/dwelling/road/infrastructure/servitude etc.
Flicker	Effect caused when rotating wind turbine blades periodically cast shadows
Tip Height	The total height of the wind turbine ie. Hub height plus half rotor diameter (see Figure1)

2.3.1 Disclosure Classification

Controlled disclosure: controlled disclosure to external parties (either enforced by law, or discretionary).

2.4 ABBREVIATIONS

Abbreviation	Description
None	

2.5 ROLES AND RESPONSIBILITIES

All parties involved in the positioning wind turbines, concentrated solar plants and photovoltaic plants near power lines/substations should endeavour to follow the setbacks outlined in this guideline.

2.6 PROCESS FOR MONITORING

Agreement by Eskom in writing on any encroachment of the setbacks distance should be requested via the Grid Access Unit. Eskom should ensure that every application for renewable energy (RE) developments are informed about the existence of the setbacks document early in the RE planning process to ensure maximum effect. This includes Eskom RE development.

2.7 RELATED/SUPPORTING DOCUMENTS

None

3. DOCUMENT CONTENT

3.1 INTERNATIONAL SETBACK COMPARISON

Wind Turbine setbacks employed by various countries were considered. It was found that setbacks were determined for various reasons that include noise, flicker, turbine blade failure and wind effects as well as

CONTROLLED DISCLOSURE



Ronell Kuppen <ronell@enviro-insight.co.za>

Proposed Red Sands Renewable Energy Projects located near Aggeneys, in the Northern Cape

obstacles <obstacles@atns.co.za>

11 October 2022 at 10:36

To: Ronell Kuppen <ronell@enviro-insight.co.za>

Cc: Vusi Nkosi <vusin@atns.co.za>, Graham Mondzinger <grahamm@atns.co.za>

Good day Ronell,

RE: Proposed Solar PV Facility

This is to acknowledge that ATNS has received your query.

Below is the criteria for obstacle evaluation according to the regulations:

- If the Solar PV installation is equal to or bigger than 5000 square meters;
- If the Solar PV installation falls within a 8km radius around any aerodrome/airstrip or helipad;
- If the Solar PV installation falls within the Approach and Departure area of any aerodrome/airstrip or helipad and
- If the Solar PV installation **falls within 3km** radius of any aerodrome/airstrip or helipad **a glint and glare assessment is required** from the applicant.

***Please Note the above is requirements for aviation purposes but if your development does fall outside of the above and you still need approval or letter based on other departments within the EIA process, you will still need to apply for assessments before we or the CAA can issue this approval or letter.**

Kindly note that ATNS charge for the assessment, and before the process start our Business Development department will forward a proposal to the client.

The proposal and payment process are as follows if applicable:

- You will receive the proposal from our Business Development department, it will contain the work that will be done as well as what it will cost.
- They will provide you with all the information needed to make payment. **For this reason, please provide a billing address and the details of the person to whom the proposal should be addressed.**
- We will start with the assessments when our Business Development department received an accepted and signed proposal back from the client.

We will conduct an assessment to evaluate whether the proposed structures will affect the safety of flight for aerodromes in close vicinity as well as communication, navigation and surveillance (CNS) equipment.

Please see required information below before we can proceed with our assessment:

- Elevation above mean sea level
- Coordinate list for each structure - WGS84 (**degrees, min and sec – S302515.32 E0180102.52**)
- A KMZ file with the positions of the proposed structures.
- We also require the dimensions/specs of the structures.
- Height to the top of structure.
- A Glint and Glare assessment report (if it is within the 3km radius of any aerodrome/airstrip or helipad).
 - If there will be power lines erected, and/or a substation the position and heights for each structure (Pole/substation) must be provided.

This whole process can take up to 120 working days' minimum that will commence after the proposal is accepted, signed and received by our Business Development department.

Please note that ATNS also liaise with the South Africa Civil Aviation Authority (SACAA) and will provide the client with the conditional/final approval from the SACAA.

The client will have to liaise with SACAA to finalise the "As build" and for any queries with the lighting.

Regards,

Yanga Nofuma

Obstacle Administrator | COO - Air Traffic Services

Bruma

T: 011 607 1474 • F: 086 695 2610 • C:

E: obstacles@atns.co.za • W: www.atns.com

From: Ronell Kuppen <ronell@enviro-insight.co.za>

Sent: Tuesday, 11 October 2022 10:27

Cc: Corné Niemandt <corne@enviro-insight.co.za>

Subject: Proposed Red Sands Renewable Energy Projects located near Aggeneys, in the Northern Cape

Dear Interested and Affected Parties (I&APs),

Enviro-Insight has been appointed as the independent Environmental Consultancy to undertake the Environmental Impact Assessments for the proposed Renewable Energy Projects, in the Northern Cape, to be known as the Red Sands Wind Energy and Solar Energy Facilities.

FE Red Sands (Pty) Ltd proposes the development of four (4) wind energy facilities (WEF) and two Solar Energy Facilities (SEF) and its associated infrastructure on sites located approximately 77 km southwest of Pofadder and 81 km east of Springbok. The sites are located within Ward 4 of the Nama-Khoi Local Municipality, in the Northern Cape Province of South Africa.

The proposed renewable energy facilities are as follows:

- FE Red Sands Solar East
- FE Red Sands Solar West
- FE Red Sands North East WEF
- FE Red Sands South East WEF
- FE Red Sands South West WEF
- FE Red Sands North West WEF

Please find attached the Notification of the Application and the Background Information Document for the proposed Renewable Energy Projects.

Should you have any queries please do not hesitate to contact us.

Kind Regards

Ronell Kuppen

Senior Environmental Consultant

www.enviro-insight.co.za

The contents of this e-mail are confidential and intended for the named recipient(s) only. The information may be privileged or otherwise protected from disclosure. This e-mail is also subject to copyright. No part hereto may be reproduced, adapted, transmitted, or used in any way without the written consent of ATNS SOC Limited. Please do not hesitate to contact us immediately should you have any doubts regarding the authenticity of an email purportedly sent by the sender. The provision of Section 11, 12 and 13 of the Electronic Communication and Transaction Act, 25 of 2002, in so far as e-contracting is concerned are expressly excluded and contracted out of by Air Traffic and Navigation Services SOC Limited (ATNS) and, unless clearly stated to the contrary in the body of the data message or electronic communication. No data message or electronic communication will be recognised as having legal contractual status as per the aforementioned provisions under any circumstances. All contracts concluded by ATNS and its Business Units will only be legally binding and recognised once reduced to physical writing and physically signed by a duly authorised representative of ATNS. All other provisions of the Electronic Communication and Transaction Act, 25 of 2002 are accepted. Although ATNS has taken all reasonable precautions to ensure that this e-mail is virus free, ATNS does not accept any liability for any damage caused by any virus transmitted by this e-mail.



Template for Solar PV information.xlsx

18K [View as HTML](#) [Download](#)



Ronell Kuppen <ronell@enviro-insight.co.za>

Fwd: I&AP Registration: Red Sands Solar and Wind Energy Facilities

Ronell Kuppen <ronell@enviro-insight.co.za>
To: kathryn@g7energies.com
Cc: Marvin Grimett <marvin.grimett@gmail.com>

1 November 2022 at 11:06

Good Morning Ms Winstanley,

Thank you for your interest in the project,

Kindly note that you have been registered as an I&AP and you will be kept updated on the progress of the applications.

Thank you

Kind Regards

Ronell Kuppen
Senior Environmental Consultant
www.enviro-insight.co.za

----- Forwarded message -----

From: **Kathryn Winstanley** <kathryn@g7energies.com>
Date: Tue, Nov 1, 2022 at 10:23 AM
Subject: I&AP Registration: Red Sands Solar and Wind Energy Facilities
To: marvin.grimett@gmail.com <marvin.grimett@gmail.com>
Cc: Caryn Clarke <caryn@g7energies.com>, Colette Alisha Stander <Colette@g7energies.com>, Skye Clarke-McLeod <skye@g7energies.com>, Kaylene Moodley <kaylene@g7energies.com>

Dear Marvin,

I trust you are well.

Could I please request that **Caryn Clarke** with e-mail address eia@g7energies.com be registered as an I&AP for the proposed Red Sands East and West Solar Energy Facilities, as well as the proposed Red Sands North East, North West, South East, and South West Wind Energy Facilities. Could I also ask that relevant documents be sent through, if there are any available.

Could you please reply with confirmation of registration.

Thank you very much.

With kind regards,



Kathryn Winstanley
Environmental Project Developer

G7 Renewable Energies (Pty) Ltd
5th Floor, 125 Buitengracht Street
Cape Town 8001, South Africa
+27 81 317 7512 (Mobile)
+27 21 300 0610 (Office)
+27 86 514 1735 (Fax)
www.g7energies.com

Disclaimer: This email and any attachments are confidential and may be privileged. If you are not a named recipient, please consider this notice that any disclosure, copying, distribution or doing anything with the information and/ or contents of this email is strictly

prohibited and unlawful. In case of strong suspicion of phishing, report the email through the reporting tool on your email toolbar or send it as an attachment to info@g7energies.com