

## APPENDIX E2: PROOF OF I&AP NOTIFICATION

# BACKGROUND INFORMATION DOCUMENT

## EIA FOR THE PROPOSED GAMSBERG SMELTER PROJECT, NEAR AGGENEYS NORTHERN CAPE

OCTOBER 2019

### INTRODUCTION

Black Mountain Mining (Pty) Ltd, part of the Vedanta Zinc International, owns and operates the Gamsberg Zinc Mine in terms of the following licences:

- Environmental Authorisation (Ref: NC/EIA/NAM/KHA/AGG/2012);
- Waste Management Licence (Ref: 12/9/11/L955/8); and
- Water Use Licence for the Gamsberg Mine (Ref:14/D82C/ABCGL/2654).

The Gamsberg Zinc Mine is an up to 10 million ton per annum (mtpa) open pit zinc mine together with a concentrator plant and associated infrastructure. The Gamsberg Zinc Mine is located 14km east of the town of Aggeneys, Northern Cape Province, on the farms Bloemhoek 61 Ptn 1, Gams 60 Ptn 1, and Aroams 57 RE.

Black Mountain Mining (Pty) Ltd is proposing to construct a new zinc smelter (Figure 1) and associated infrastructure (new secured landfill site, transmission line and access roads). The Sedibeng Water underground pipeline from the Orange River (near Pella Town) to the smelter (Figure 2) also requires upgrade to support the smelter project. The upgrade of the old underground pipeline is required to improve the pipeline stability and to cater for additional bulk water supply.

### ENVIRONMENTAL AUTHORISATION PROCESS

In order for the proposed project (zinc smelter, associated infrastructure and upgrade of the bulk water pipeline) to proceed an Environmental and Social Impact Assessment (EIA) is required, including an application phase, scoping phase, and an Environmental Impact Assessment (EIA) phase and associated compilation of an Environmental Management Programme (EMP). The assessment is required to be undertaken in terms of the National Environmental Management Act, 107 of 1998 (NEMA) and the associated Regulations (2014). In addition to this, the proposed project will require authorisation in terms of the National Water Act, 36 of 1998, the National Environmental Management: Waste Act 59 of 2008 (NEM:WA) as well as the National Environmental Management: Air Quality Act 39 of 2004 (NEM:AQA).

SLR Consulting (South Africa) (Pty) Ltd (SLR), an independent firm of environmental consultants, has been appointed to manage the environmental regulatory processes and conduct the public participation in support of the applications for the proposed zinc smelter and upgrade of the associated bulk water pipeline.

### PURPOSE

This Background Information Document (BID) provides initial information to stakeholders about the EIA process to be undertaken for the proposed project.

### YOUR ROLE

You have been identified as an interested and affected party (I&AP) who would like to be informed about the proposed project and have input into the EIA process.

You have an opportunity to review this Background Information Document and to provide your initial comments to SLR for incorporation in the EIA process.

You will also be given the opportunity to register as a stakeholder, provide input at a public meeting, and to review and comment on the Scoping Report and EIA Report.

All comments will be recorded and included in the reports submitted to the Competent Authorities for decision-making.

### HOW TO RESPOND

Responses to this document can be submitted by means of the attached comments sheet and/or through communication with the person listed below.

### WHO TO CONTACT

#### SLR Consulting

Candice Sadan

(021) 461 1118 (Tel)

(011) 467 0978 (Fax)

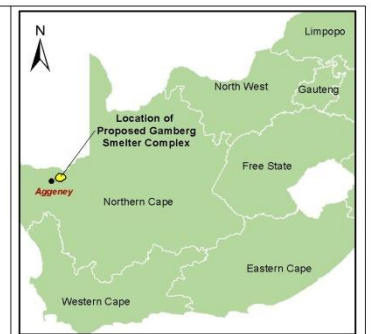
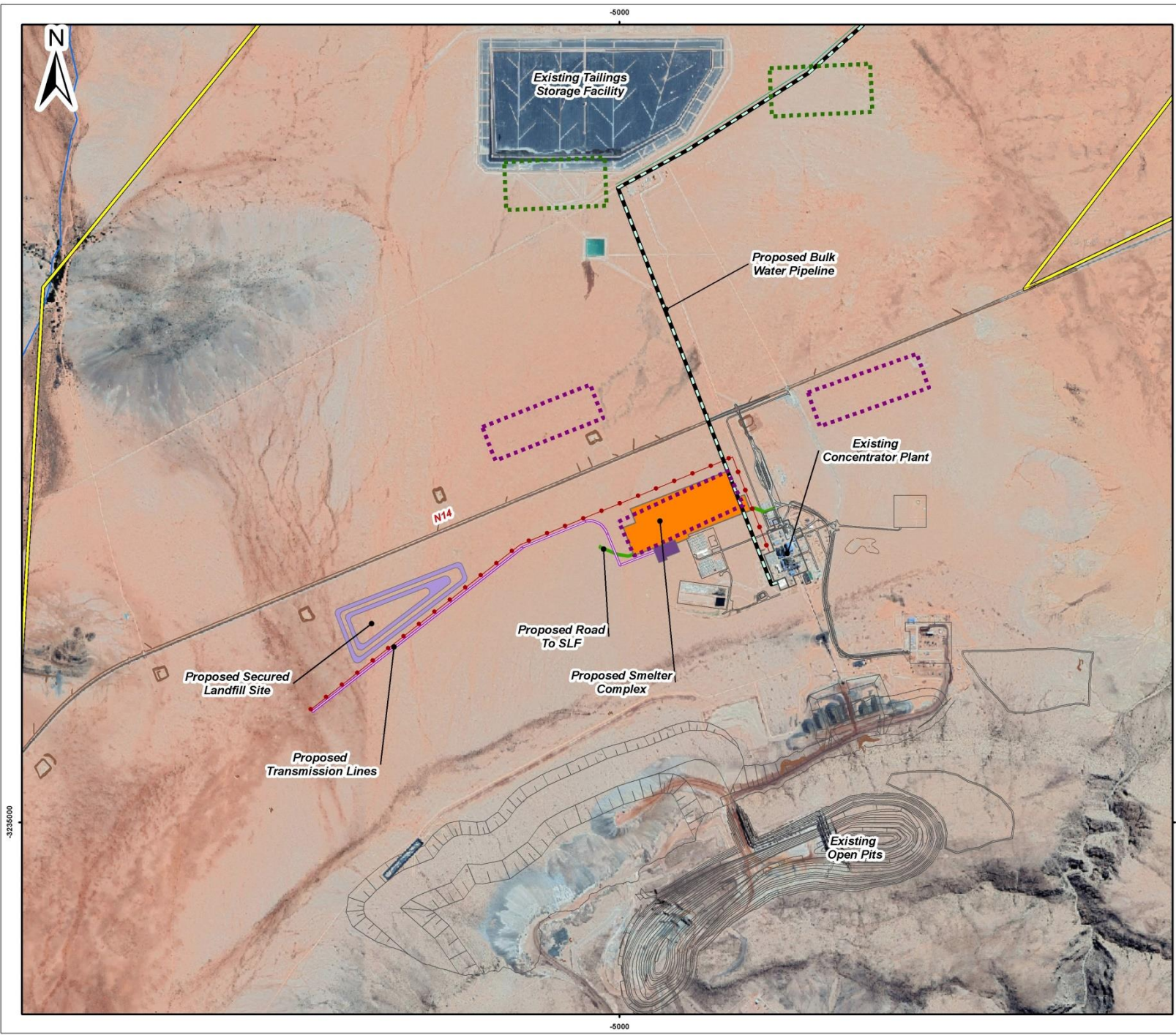
[csadan@slrconsulting.com](mailto:csadan@slrconsulting.com)

PO Box 1596, Cramerview 2060

**Please submit initial comments to SLR by 15 November 2019. You will also have an opportunity to comment on the Scoping and EIA reports.**

**All registered I&APs will be notified when public meetings are taking place.**





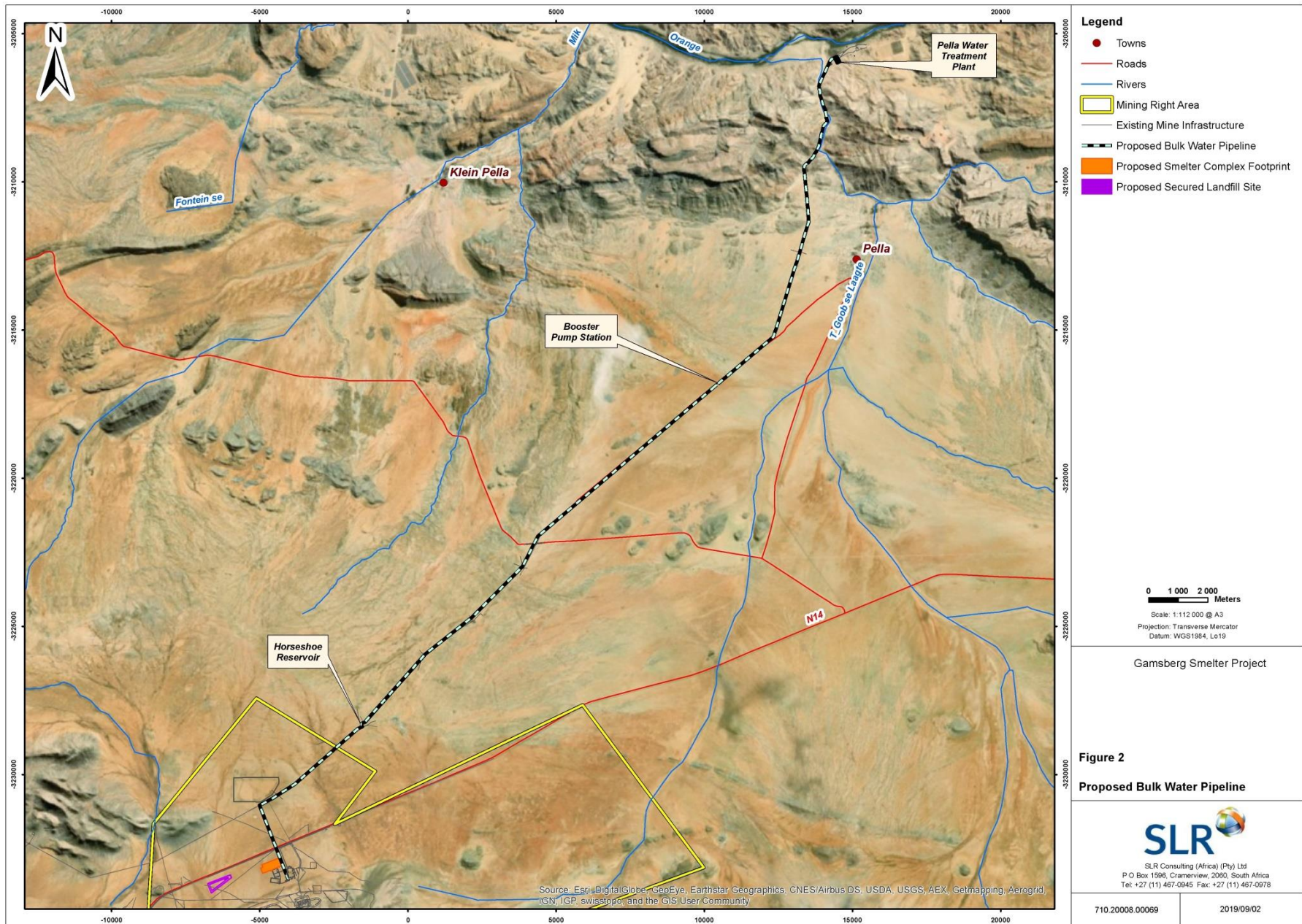
- Legend**
- Mining Right Area
  - Existing Infrastructure
  - Alternative SLF Locations
  - Alternative Smelter Complex Locations
- Proposed Infrastructure**
- Bulk Water Pipeline
  - Secured Landfill Site
  - Switch Yard
  - Smelter Complex Footprint
  - Smelter Roads
  - Transmission Line
  - 66kv Transmission Line

0 200 400 Meters  
 Scale: 1:23 000 @ A3  
 Projection: Transverse Mercator  
 Datum: WGS1984, Lo23

Gamsberg Smelter Project

**Figure 1**  
**Proposed Gamsberg Smelter Complex**

**SLR**  
 SLR Consulting (Africa) (Pty) Ltd  
 P O Box 1596, Cramerview, 2060, South Africa  
 Tel: +27 (11) 487-0945 Fax: +27 (11) 487-0978



## PURPOSE OF THIS DOCUMENT

This BID has been prepared by SLR to inform you about:

- \* The proposed project;
- \* The baseline environment of the project area;
- \* The EIA process to be followed;
- \* Possible environmental and social issues; and
- \* How you can have input into the process.

## GAMSBURG SMELTER PROJECT OVERVIEW

### INTRODUCTION

The Gamsberg Zinc Mine is an existing mine producing up to 4 mtpa of ore with associated waste rock dumps; mine machinery fleet and workshops. The concentrator plant (Figure 3) would produce up to 300 000 tons of zinc (metal in concentrate) per annum with associated stockpile areas, tailings facility and supporting infrastructure (i.e. water supply distribution network, laboratories, sewage works and an office complex). Water is currently extracted from the Orange River and transferred to the Gamsberg Zinc Mine via the existing aboveground Sedibeng Water pipeline.



Figure 3. Gamsberg Mine Existing Infrastructure

### MOTIVATION

In order to add value to the zinc concentrate being produced at the Gamsberg Zinc Mine, Black Mountain Mining (Pty) Ltd wishes to develop a smelter and produce higher value zinc ingots for export. This is in line with the Government of South Africa's National Industrial Policy Framework that aims to attract Foreign Direct Investment, fully beneficiate minerals and export of value-added commodities.

### GAMSBURG SMELTER PROJECT

Black Mountain Mining (Pty) Ltd is proposing to construct an electrolytic zinc smelter (the "smelter") for treating concentrates produced solely from the recently commissioned ore concentrator plant. The proposed smelter will produce 300 000 tons per annum (tpa) of zinc ingots and other products which can then be sold on the open market.

The proposed smelter will generate numerous products through a process of roasting (acid forming), leaching (jarosite forming) and purification (removal of metallic impurities as well as gypsum) and electrowinning where zinc deposition on a cathode occurs. (. The deposited zinc is

stripped from the cathodes and is converted into zinc ingots in the melting and casting section.

The zinc ingots and sulphuric acid will be sold and waste products will need to be safely disposed. Mineral wastes will either be disposed of via a secured landfill site to the west of the smelter or into the existing tailings storage facility.

The primary support services and infrastructure associated with the proposed smelter project includes an internal site entrance and access controls, weigh bridge, clean and dirty storm water management, overhead transmission lines, and a secure landfill site (Figure 1). Access to the facility would remain via the N14, as per current operations. Potable water would be sourced from Sedibeng Water and electricity from Eskom Aggeneys Substation. Liquid effluent from the site is planned to be treated on-site by sewage and effluent treatment plants.

### PELLA BULK WATER PIPELINE

A new 39km bulk water pipeline would be constructed from the existing Orange River abstraction point to replace the old underground pipeline (Figure 2). The existing Pella Water Works would also be upgraded. The existing Pella Water Works would also be upgraded. The new pipeline would supply the increased potable water demands as a result of the smelter development. The new pipeline will be constructed within the old underground pipeline servitude.

The existing Eskom transmission line and Eskom Substation providing power to the booster pump station for the pipeline would also need to be upgraded.

### PROJECT ALTERNATIVES

The process of considering alternatives is on-going and will form part of the EIA process. Alternatives considered for the proposed project include footprint, locality and technology alternatives.

## STATUS OF EXISTING ENVIRONMENT

The biodiversity of the Gamsberg inselberg and surrounds is considered as extremely sensitive and the Gamsberg Mine already has a number of 'set aside' areas and offset agreements in place as required by the existing EA issued by the Northern Cape Department of Environment and Nature Conservation (NCDENC).

In a water scarce environment groundwater resources in the Namakwa District, although more abundant than surface water features, are very important especially for livestock farmers.

In addition, the region has high unemployment rates at municipal, district and provincial level with mining activities forming the cornerstone of the local economy.

As a result the EIA will need to consider biophysical and social aspects of the area to better understand the social and environmental sensitivities.

## REGULATORY PROCESS TO BE FOLLOWED

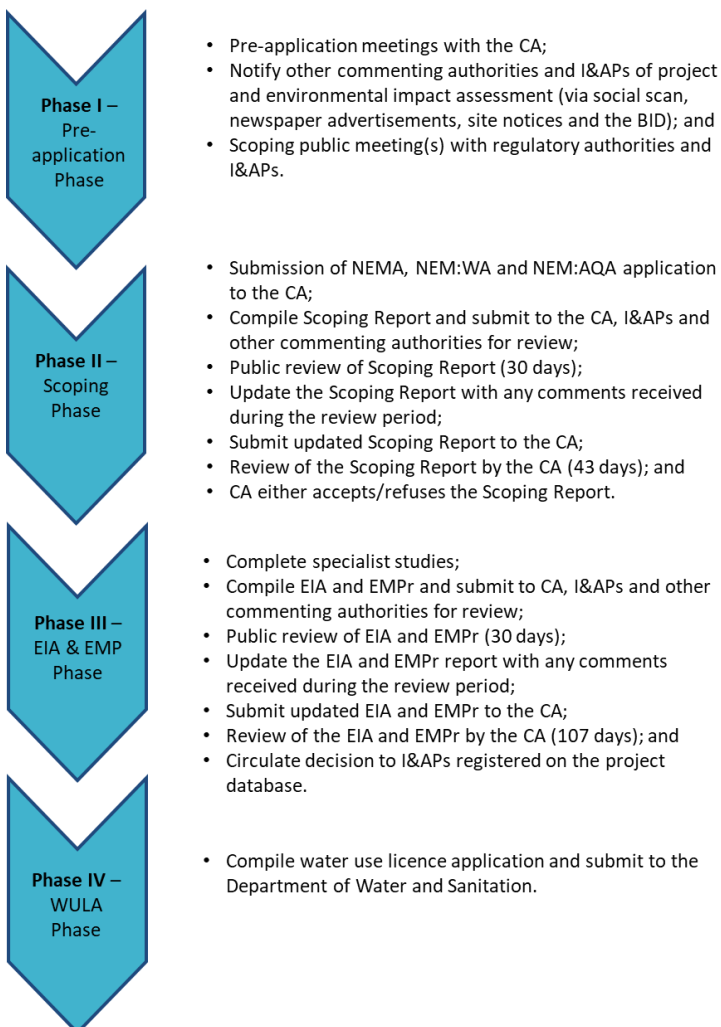
The EIA regulatory process that will be followed:

- provides information on the project;
- documents the affected environment in which it is being undertaken;
- identifies, in consultation with interested and/or affected parties (I&APs), the potential negative as well as positive impacts of the proposed project; and
- reports on management measures required to mitigate impacts to an acceptable level.

The process steps and timeframes are in accordance with the EIA Regulations, 2014 and are outlined below.

### STEPS IN THE EIA PROCESS

The likely process steps and timeframes are provided below. Registered I&APs and other stakeholders on the project's database will receive notification of public participation opportunities in advance.



## PARTIES INVOLVED IN THE ENVIRONMENTAL APPLICATION PROCESS

### REGULATORY AUTHORITIES

- \* Northern Cape Department of Environment and Nature Conservation (NCDENC);
- \* Department of Human Settlements, Water and Sanitation (DHSWS).
- \* Department of Minerals Resources and Energy (DMRE)
- \* South Africa Heritage Resource Agency (SAHRA);
- \* Department of Agriculture, Forestry and Fisheries (DAFF);
- \* Northern Cape Department of Roads and Transport (NCDRT); and
- \* Northern Cape Department of Rural Development and Land Reform (NCDRLR), including land claims commissioner.

### LOCAL AUTHORITIES

- \* Namakwa District Municipality;
- \* Khai-Ma Local Municipality; and
- \* Ward Councillors.

### I&APs

- \* Adjacent land owners and surrounding communities, land users and owners;
- \* Interested Parties
- \* Non-governmental organisations and associations; and
- \* Parastatals.

**Please let us know of additional parties that should be involved.**

**BLACK MOUNTAIN MINING (PTY) LIMITED**

**BACKGROUND INFORMATION DOCUMENT FOR THE PROPOSED GAMSBERG SMELTER AND BULK WATER PIPELINE PROJECT.**

**REGISTRATION AND RESPONSE FORM FOR INTERESTED AND AFFECTED PARTIES**

**OCTOBER 2019**

<b>DATE</b>		<b>TIME</b>	
<b>PARTICULARS OF THE INTERESTED AND AFFECTED PARTY</b>			
<b>NAME</b>			
<b>POSTAL ADDRESS</b>			
		<b>POSTAL CODE</b>	
<b>STREET ADDRESS</b>			
		<b>CODE</b>	
<b>WORK/ DAY TELEPHONE NUMBER</b>		<b>WORK/ DAY FAX NUMBER</b>	
<b>CELL PHONE NUMBER</b>		<b>E-MAIL ADDRESS</b>	

**PLEASE IDENTIFY YOUR INTEREST IN THE PROPOSED PROJECT**

--

**PLEASE WRITE YOUR COMMENTS AND QUESTIONS HERE**

--

**PLEASE NOTIFY SLR OF ANY OTHER INTERESTED AND AFFECTED PARTY THAT SHOULD BE INCLUDED IN THIS ESIA PROCESS.**

--

**Please return completed forms to:**

**SLR Consulting, attention: Candice Sadan**

**(Tel) (021) 461 1118**

**(011) 467 0978 (Fax)**

[csadan@slrconsulting.com](mailto:csadan@slrconsulting.com)

**PO Box 1596, Cramerview 2060**

**Please submit initial comments to SLR by 15 November 2019. You will also have an opportunity to comment on the S&EIA. All registered I&APs will be notified when public meetings are taking place.**

# AGTERGRONDINLIGTINGSDOKUMENT

## OIE VIR DIE BEOOGDE GAMSBERG SMELTERYPROJEK NABY

### AGGENEYS, NOORD-KAAP

OKTOBER 2019

#### INLEIDING

Black Mountain Mining (Edms.) Bpk., deel van die Vedanta-groep, besit en bedryf die Gamsberg Sinkmyn. Die Gamsberg Sinkmyn Fase 1 word bedryf ingevolge 'n Omgewingsmagtiging (Verw.: NC/EIA/NAM/KHA/AGG/2012) gedateer 12 Augustus 2013. Die Gamsberg Sinkmyn is 'n tot 10 miljoen ton per jaar (mtpa) oopgroefsinkmyn, tesame met 'n konsentratooraanleg en verwante infrastruktuur. Die Gamsberg Sinkmyn is 14 km oos van die dorp Aggeneys, Noord-Kaapprovinsie, op Gedeelte 1 van die plaas Bloemhoek 61, Gedeelte 1 van Gams 60, en die Restant van Aroams 57.

Black Mountain Mining (Edms.) Bpk. beoog om 'n nuwe sinksmeltery (Figuur 1) en verwante infrastruktuur (nuwe beveiligde stortingsterrein, transmissiekraglyn en interne toegangspaaie) op te rig. Sedibeng Water se ondergrondse pyplyn vanaf die Oranjerivier (naby die dorp Pella) tot by die smeltery (Figuur 2) vereis ook opgradering om die smelteryprojek te ondersteun. Die opgradering van die ou ondergrondse pyplyn is nodig om die pyplyn se stabiliteit te verbeter en om voorsiening te maak vir addisionele grootmaatwatertoevoer.

#### OMGEWINGSMAGTIGINGSPROSES

Vir die beoogde projek (sinksmeltery, verwante infrastruktuur en opgradering van die grootmaatwaterpyplyn) om voort te gaan, word 'n Omgewings- en Maatskaplike Impakevaluering (OIE) vereis, wat 'n aansoek-, bestekopname- en Omgewingsimpakevalueringfase (OIE-fase) insluit, asook die opstel van 'n verwante Omgewingsbestuursprogram (OBP). Die evaluering moet ingevolge die Nasionale Wet op Omgewingsbestuur, 1998 (Wet 107 van 1998) (NEMA) en die verwante Regulasies (2014) onderneem word. Daarbenewens sal die beoogde projek ook 'n magtiging vereis ingevolge die Nasionale Waterwet, Wet 36 van 1998; die Nasionale Wet op Omgewingsbestuur: Afval, Wet 59 van 2008 (NEM:WA), asook die Nasionale Wet op Omgewingsbestuur: Luggehalte, Wet 39 van 2004 (NEM:AQA).

SLR Consulting (South Africa) (Edms.) Bpk. (SLR), 'n onafhanklike firma van omgewingskonsultante, is aangestel om die omgewingsreguleringsprosesse te bestuur en om die openbare deelname ter ondersteuning van die aansoeke vir die beoogde sinksmeltery en opgradering van die verwante grootmaatwaterpyplyn te onderneem.

#### DOELWIT

Hierdie Agtergrondinligtingsdokument (AID) bied voorlopige inligting aan belanghebbers oor die OIE-proses wat vir die beoogde projek onderneem moet word.

#### U ROL

U is as 'n belangstellende en geaffekteerde party (B&GP) geïdentifiseer wat ingelig wil word oor die beoogde projek en wat insae in die OIE-proses wil hê.

U het 'n geleentheid om hierdie Agtergrondinligtingsdokument na te gaan en om u voorlopige kommentaar aan SLR te voorsien vir insluiting in die OIE-proses.

U sal ook die geleentheid kry om as 'n belanghebbende te registreer, insette by 'n openbare vergadering te lewer en om die Bestekopname- en OIE-verslag na te gaan en daarop kommentaar te lewer.

Alle kommentaar sal aangeteken en ingesluit word in die verslae wat by die Bevoegde Owerhede ingedien word vir besluitneming.

#### HOE OM TE REAGEER

Reaksie op hierdie dokument kan ingedien word by wyse van die aangehegte kommentaarvorm en/of deur kommunikasie met die onderstaande persoon.

#### WIE OM TE KONTAK

##### SLR Consulting

Candice Sadan

Tel: 021 461 1118

Faks: 011 467 0978

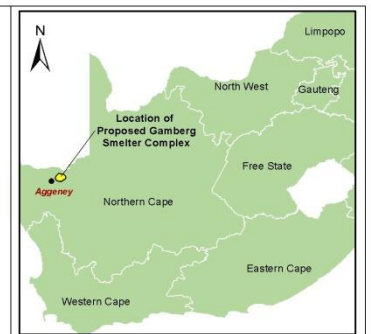
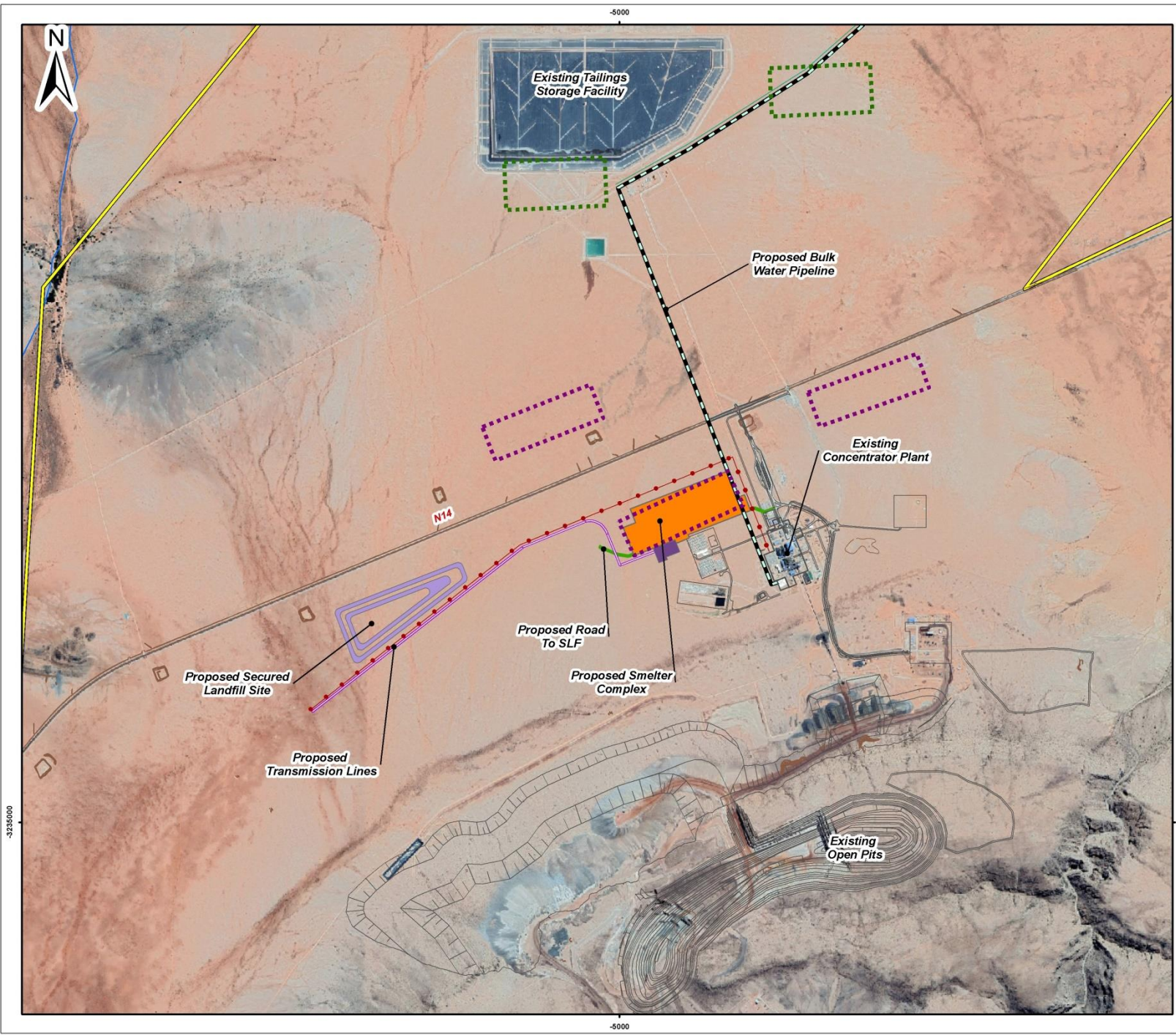
E-pos: [csadan@slrconsulting.com](mailto:csadan@slrconsulting.com)

Pos: Posbus 1596, Cramerview 2060

**Dien asseblief voorlopige kommentaar in by SLR teen 15 November 2019. U sal ook 'n geleentheid hê om kommentaar te lewer op die Bestekopname- en OIE-verslag.**

**Alle geregistreeerde B&GP's sal in kennis gestel word wanneer openbare vergaderings plaasvind.**





- Legend**
- Mining Right Area
  - Existing Infrastructure
  - Alternative SLF Locations
  - Alternative Smelter Complex Locations
- Proposed Infrastructure**
- Bulk Water Pipeline
  - Secured Landfill Site
  - Switch Yard
  - Smelter Complex Footprint
  - Smelter Roads
  - Transmission Line
  - 66kv Transmission Line

0 200 400 Meters  
 Scale: 1:23 000 @ A3  
 Projection: Transverse Mercator  
 Datum: WGS1984, Lo23

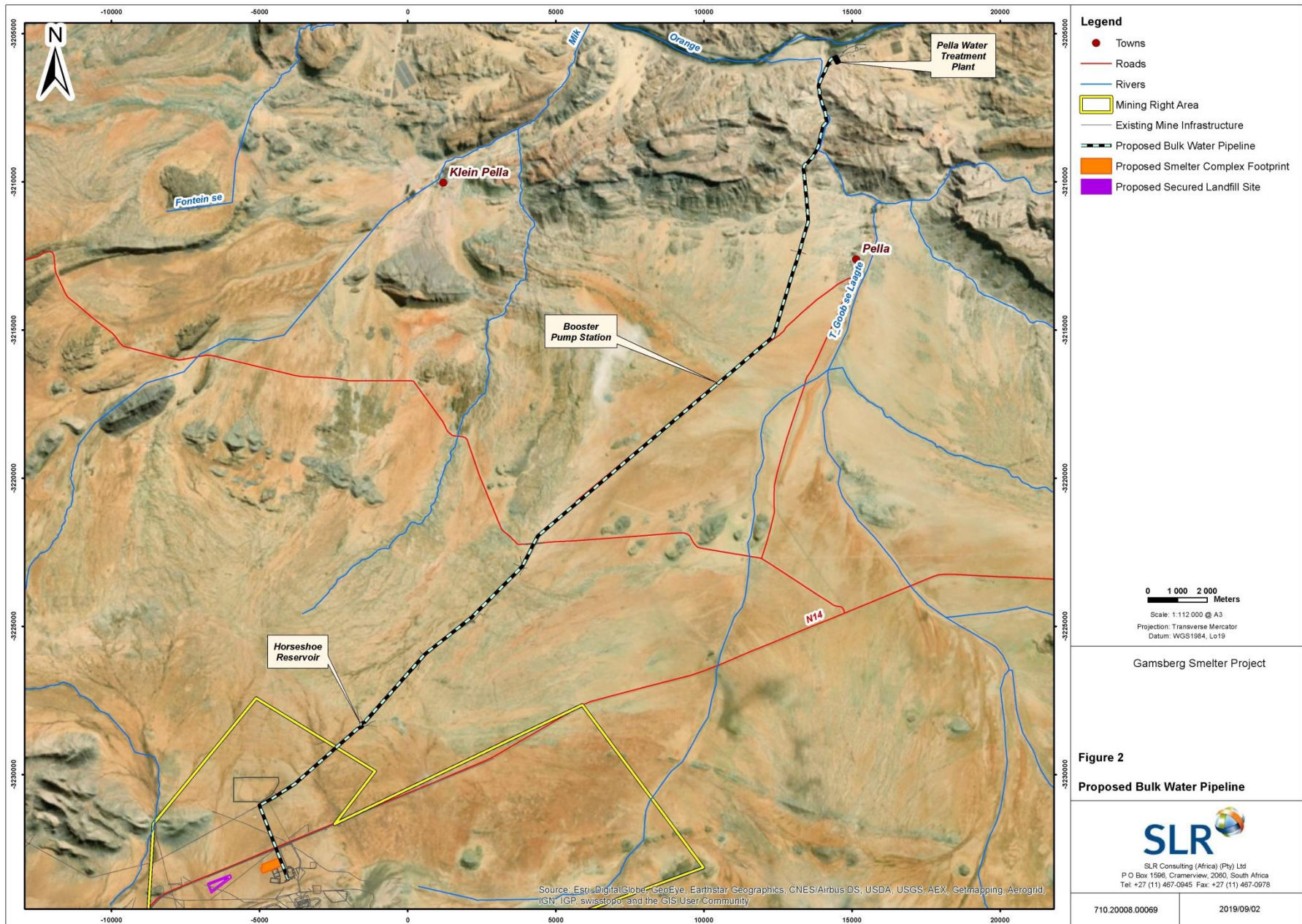
Gamsberg Smelter Project

**Figure 1**  
**Proposed Gamsberg Smelter Complex**

**SLR**  
 SLR Consulting (Africa) (Pty) Ltd  
 P O Box 1596, Cramerview, 2060, South Africa  
 Tel: +27 (11) 487-0945 Fax: +27 (11) 487-0978

720.22013.00002

2019/09/02



- Legend**
- Towns
  - Roads
  - Rivers
  - ▭ Mining Right Area
  - Existing Mine Infrastructure
  - - - Proposed Bulk Water Pipeline
  - Proposed Smelter Complex Footprint
  - Proposed Secured Landfill Site

0 1 000 2 000 Meters  
 Scale: 1:112 000 @ A3  
 Projection: Transverse Mercator  
 Datum: WGS1984, Lo19

Gamsberg Smelter Project

**Figure 2**  
**Proposed Bulk Water Pipeline**



SLR Consulting (Africa) (Pty) Ltd  
 P O Box 1596, Cramerview, 2090, South Africa  
 Tel: +27 (11) 467-0945 Fax: +27 (11) 467-0978

710.20008.00069

2019/09/02

Source: Esri, DigitalGlobe, GeoEye, Earthstar Geographics, CNES/Airbus DS, USDA, USGS, AEX, Getmapping, Aerogrid, IGN, IGP, swisstopo, and the GIS User Community

## DOEL VAN HIERDIE DOKUMENT

Hierdie AID is opgestel deur SLR om u toe te lig oor:

- \* die beoogde projek;
- \* die projekgebied se huidige (grondlyn-) omgewing;
- \* die OIE-proses wat gevolg moet word;
- \* moontlike omgewings- en maatskaplike kwessies; en
- \* hoe u insette in die proses kan lewer.

## OORSIG VAN DIE GAMSBERG SMELTERYPROJEK

### INLEIDING

Die Gamsberg Sinkmyn is 'n bestaande myn wat tot 4 mtpa erts produseer, met verwante afvalkliphope; 'n mynmasjinerievloot en werkswinkels. Die konsentratoraanleg (Figuur 3) sal tot 300 000 ton sink (metaal in konsentraat) per jaar produseer, met verwante voorraadstapelwerfgebiede, 'n uitskootaanleg en steun-infrastruktuur (d.i. 'n watertoevoerdistribusienetwerk, laboratoriums, rioolwerke en 'n kantoor kompleks). Water word tans uit die Oranjerivier onttrek en na die Gamsberg Sinkmyn via die bestaande boggrondse Sedibeng Waterpyplyn vervoer.



**Figuur 3. Gamsberg-myn Bestaande Infrastruktuur**

### MOTIVERING

Ten einde waarde toe te voeg tot die sinkkonsentraat wat by die Gamsberg Sinkmyn geproduseer word, is Black Mountain Mining (Edms.) Bpk. van voorneme om 'n smeltery te ontwikkel en om hoër waarde sinkgietblokke vir uitvoer te produseer. Dit is in lyn met die Suid-Afrikaanse Regering se Nasionale Nywerheidsbeleidsraamwerk wat poog om Buitelandse Regstreekse Belegging te lok, minerale ten volle te veredel en waardetoegevoegde kommoditeite uit te voer.

### GAMSBERG SMELTERYPROJEK

Black Mountain Mining (Edms.) Bpk. beoog die oprigting van 'n elektrolitiese sinksmeltery (die "smeltery") vir die behandeling van konsentrate wat uitsluitlik uit die ertskonsentratoraanleg wat onlangs in bedryf gestel is, geproduseer word. Die beoogde smeltery sal 300 000 ton per jaar (tpa) sinkgietblokke en ander produkte wat dan op die opemark verkoop kan word, produseer.

Die beoogde smeltery sal verskeie produkte genereer deur 'n proses van rooster (suurvormend), uitloging (jarosietvormend), suiwing (verwydering van metaalagtige onsuierhede, asook gips) en elektrowinning, waar sinkafsetting op 'n katode plaasvind. Die afgesette sink word

van die katodes af gestroop en in die smelt- en gietafdeling omgeskakel in sinkgietblokke.

Die sinkgietblokke en swaelsuur sal verkoop word en afvalprodukte sal veilig mee weggedoen moet word. Mineraleafval sal hetsy mee weggedoen word via 'n beveiligde stortingsterrein wes van die smeltery of na die bestaande uitskotbergingsaanleg.

Die primêre steundienste en infrastruktuur wat verband hou met die beoogde smelteryprojek, sluit 'n interne terrein-ingang en toegangsbeheer, weegbrug, skoon en vuil stormwaterbestuur, oorhoofse transmissiekraglyne en 'n beveiligde stortingsterrein in (Figuur 1). Toegang tot die aanleg sal steeds via die N14 wees, soos met huidige bedrywighede. Drinkwater sal by Sedibeng Water bekom word en elektrisiteit by Eskom se Aggeneys Substasie. Die beplanning is om die terrein se vloeibare afloopwater intern deur riool- en afloopwaterbehandelingsaanlegte te behandel.

### PELLA GROOTMAATWATERPYPLYN

'n Nuwe 39 km grootmaatwaterpyplyn sal vanaf die bestaande Oranjerivier onttrekkingspunt opgerig word om die ou ondergrondse pyplyn te vervang (Figuur 2). Die bestaande Pella Waterwerke sal ook opgegradeer word. Die nuwe pyplyn sal voorsien in die groter vraag na drinkwater as gevolg van die smelteryontwikkeling. Die nuwe pyplyn sal binne-in die ou ondergrondse pyplynserwituut opgerig word.

Die bestaande Eskom transmissiekraglyn en Eskom substasie wat krag aan die aanjaagpompstasie vir die pyplyn voorsien, sal ook opgegradeer moet word.

### PROJEKALTERNATIEWE

Die oorweging van alternatiewe is deurlopend en sal deel vorm van die OIE-proses. Alternatiewe wat vir die beoogde projek oorweeg word, sluit in voetspoor-, liggings- en tegnologie-alternatiewe.

## STATUS VAN HUIDIGE OMGEWING

Die Gamsberg eilandberg en omstreke se biodiversiteit word as uiters sensitief geag en die Gamsberg-myn het reeds 'n aantal gebiede 'opsy gesit' en het teenwigooreenkomste in plek, soos vereis word deur die bestaande OM wat uitgereik is deur die Noord-Kaapse Departement van Omgewingsake en Natuurbewaring (NCDENC).

Hoewel grondwaterhulpbronne meer volop as oppervlakwaterkenmerke in die Namakwadistrik is, is dit baie belangrik in 'n waterskaars omgewing, veral vir boere met lewendehawe.

Voorts het die streek ook hoë werkloosheidsyfers op munisipale, distriks- en provinsiale vlak, met mynbou-bedrywighede wat die hoeksteen van die plaaslike ekonomie vorm.

Gevolglig sal die OIE biofisiese en maatskaplike aspekte van die gebied in ag moet neem om 'n beter begrip van die maatskaplike en omgewingsensitiwiteit te kry.

## REGULERINGSPROSES WAT GEVOLG MOET WORD

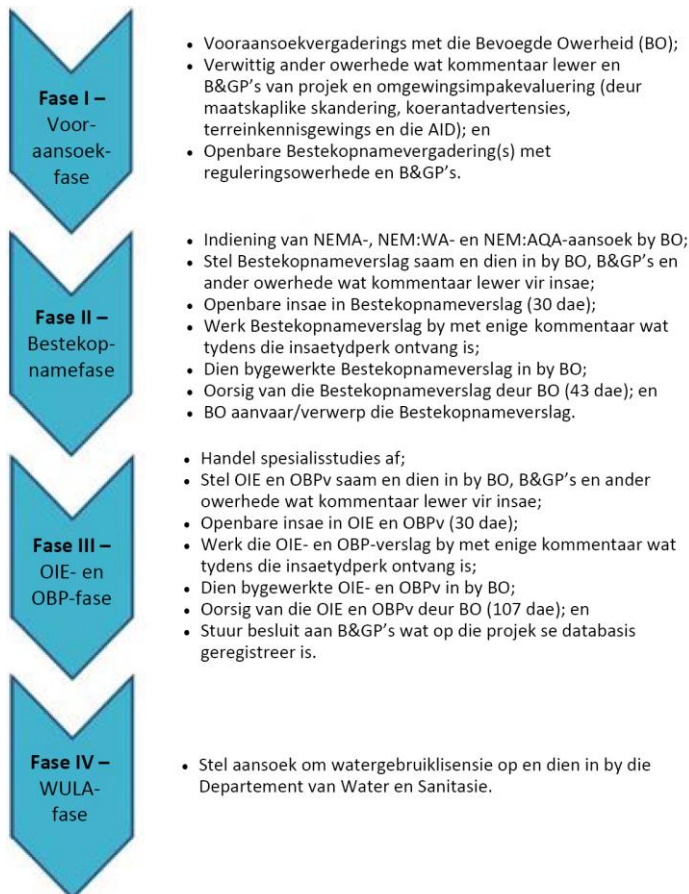
Die OIE-reguleringsproses wat gevolg sal word:

- bied inligting oor die projek;
- boekstaaf die geaffekteerde omgewing waarin dit onderneem word;
- identifiseer die potensiële negatiewe en positiewe impakte van die beoogde projek in oorleg met belangstellende en/of geaffekteerde partye (B&GP's); en
- doen verslag oor bestuursmaatreëls wat benodig word om impakte tot op 'n aanvaarbare vlak te versag.

Die stappe en tydsraamwerke van die proses is ooreenkomstig die OIE-regulasies, 2014 en word hieronder uiteengesit.

### STAPPE IN DIE OIE-PROSES

Die proses se waarskynlike stappe en tydsraamwerke word hieronder verskaf. Geregistreeerde B&GP's en ander belanghebbers op die projek se databasis, sal voortydig in kennis gestel word van geleentheid vir openbare deelname.



## PARTYE BETROKKE BY DIE OMGEWINGSAANSOEKPROSES

### REGULERINGSOWERHEDE

- \* Noord-Kaapse Departement van Omgewingsake en Natuurbewaring (NCDENC);
- \* Departement van Menslike Nedersettings, Water en Sanitasie (DHSWS);
- \* Departement van Minerale Hulpbronne en Energie (DMRE);
- \* Suid-Afrikaanse Erfenisulphronagentskap (SAHRA);
- \* Departement van Landbou, Bosbou en Visserye (DAFF);
- \* Noord-Kaapse Departement van Paaie en Vervoer (NCDRT); en
- \* Noord-Kaapse Departement van Landelike Ontwikkeling en Grondhervorming (NCDRDLR); met insluiting van die Kommissaris van Grondeise.

### PLAASLIKE OWERHEDE

- \* Namakwa Distriksmunisipaliteit;
- \* Khai-Ma Plaaslike Munisipaliteit; en
- \* Wyksraadslede.

### B&GP's

- \* Naasliggende grondeienaars en omliggende gemeenskappe, grondgebruikers en -eienaars;
- \* Belangstellende partye;
- \* Nie-regeringsorganisasies en -verenigings; en
- \* Semi-staatsinstansies.

**Verwittig ons asseblief van addisionele partye wat betrokke moet wees.**

**BLACK MOUNTAIN MINING (EDMS.) BEPERK**

**AGTERGRONDINLIGTINGSDOKUMENT VIR DIE BEOOGDE GAMSBERG SMELTERY EN GROOTMAATWATERPYPLYNPROJEK.  
REGISTRASIE- EN ANTWOORDVORM VIR BELANGSTELLEDE EN GEAFFEKTEERDE PARTYE**

**OKTOBER 2019**

<b>DATUM</b>		<b>TYD</b>	
<b>BESONDERHEDE VAN DIE BELANGSTELLEDE EN GEAFFEKTEERDE PARTY</b>			
<b>NAAM</b>			
<b>POSADRES</b>			
		<b>POSKODE</b>	
<b>STRAATADRES</b>			
		<b>KODE</b>	
<b>TELEFOONNOMMER BY DIE WERK/BEDAGS</b>		<b>FAKSNOMMER BY DIE WERK/BEDAGS</b>	
<b>SELFOONNOMMER</b>		<b>E-POSADRES</b>	

**IDENTIFISEER ASSEBLIEF U BELANG BY DIE BEOOGDE PROJEK**

**SKRYF U VRAE EN KOMMENTAAR ASSEBLIEF HIER NEER**

**VERWITTIG SLR ASSEBLIEF VAN ENIGE ANDER BELANGSTELLEDE EN GEAFFEKTEERDE PARTY WAT IN HIERDIE OIE-PROSES INGESLUIT MOET WORD.**

**Stuur ingevulde vorms asseblief terug aan:**

**SLR Consulting, vir aandag: Candice Sadan**

**Tel: 021 461 1118**

**Faks: 011 467 0978**

**E-pos: [csadan@slrconsulting.com](mailto:csadan@slrconsulting.com)**

**Pos: Posbus 1596, Cramerview 2060**

Dien voorlopige kommentaar asseblief in by SLR teen 15 November 2019.

U sal ook 'n geleentheid hê vir kommentaar op die B&OIE.

Alle geregistreerde B&GP's sal in kennis gestel word wanneer openbare vergaderings plaasvind.

## Edwynn Louw

---

**From:** Candice Sadan  
**Sent:** Wednesday, 16 October 2019 15:09  
**To:** Candice Sadan  
**Cc:** Kate Hamilton; Edwynn Louw  
**Subject:** Proposed Gamsberg Smelter Project, near Aggeneys, Northern Cape  
**Attachments:** 2019-10-16 Gamsberg smeltery en Grootmaatpyplyn\_AID-V0.3.pdf; 2019-10-16 Gamsberg smelter and pipeline\_BID-V0.13.pdf

Tracking:	Recipient	Delivery
	Candice Sadan	Delivered: 2019/10/16 15:10
	Kate Hamilton	Delivered: 2019/10/16 15:10
	Edwynn Louw	Delivered: 2019/10/16 15:10

### Notice of an initial Public Participation Process

Dear sir / madam

Herewith please find a Background Information Document (BID) regarding the Environmental Impact Assessment (EIA) for the proposed Gamsberg Smelter Project, near Aggeneys, Northern Cape.

This Background Information Document (BID) provides initial information to stakeholders about the EIA process to be undertaken for the proposed project.

You have been sent this communication as you have been identified as a potential Interested and Affected Party (I&AP). Please let SLR know should you no longer wish to receive communications in this regard.

Should you wish to be registered as an I&AP for the Project and have the opportunity to comment on the Scoping and EIA process, please complete and return the attached form.

Kind regards



**Candice Sadan**  
Office Administrator

+27 21 461 1118  
[csadan@slrconsulting.com](mailto:csadan@slrconsulting.com)

SLR Consulting  
SLR Consulting (Cape Town office)  
Unit 39, Roeland Square  
Cnr Roeland Street and Drury Lane, Cape Town, Western Cape, 8001



# BACKGROUND INFORMATION DOCUMENT

## EIA FOR THE PROPOSED GAMSBERG SMELTER PROJECT, NEAR AGGENEYS NORTHERN CAPE

OCTOBER 2019

### INTRODUCTION

Black Mountain Mining (Pty) Ltd, part of the Vedanta Zinc International, owns and operates the Gamsberg Zinc Mine in terms of the following licences:

- Environmental Authorisation (Ref: NC/EIA/NAM/KHA/AGG/2012);
- Waste Management Licence (Ref: 12/9/11/L955/8); and
- Water Use Licence for the Gamsberg Mine (Ref:14/D82C/ABCGL/2654).

The Gamsberg Zinc Mine is an up to 10 million ton per annum (mtpa) open pit zinc mine together with a concentrator plant and associated infrastructure. The Gamsberg Zinc Mine is located 14km east of the town of Aggeneys, Northern Cape Province, on the farms Bloemhoek 61 Ptn 1, Gams 60 Ptn 1, and Aroams 57 RE.

Black Mountain Mining (Pty) Ltd is proposing to construct a new zinc smelter (Figure 1) and associated infrastructure (new secured landfill site, transmission line and access roads). The Sedibeng Water underground pipeline from the Orange River (near Pella Town) to the smelter (Figure 2) also requires upgrade to support the smelter project. The upgrade of the old underground pipeline is required to improve the pipeline stability and to cater for additional bulk water supply.

### ENVIRONMENTAL AUTHORISATION PROCESS

In order for the proposed project (zinc smelter, associated infrastructure and upgrade of the bulk water pipeline) to proceed an Environmental and Social Impact Assessment (EIA) is required, including an application phase, scoping phase, and an Environmental Impact Assessment (EIA) phase and associated compilation of an Environmental Management Programme (EMP). The assessment is required to be undertaken in terms of the National Environmental Management Act, 107 of 1998 (NEMA) and the associated Regulations (2014). In addition to this, the proposed project will require authorisation in terms of the National Water Act, 36 of 1998, the National Environmental Management: Waste Act 59 of 2008 (NEM:WA) as well as the National Environmental Management: Air Quality Act 39 of 2004 (NEM:AQA).

SLR Consulting (South Africa) (Pty) Ltd (SLR), an independent firm of environmental consultants, has been appointed to manage the environmental regulatory processes and conduct the public participation in support of the applications for the proposed zinc smelter and upgrade of the associated bulk water pipeline.

### PURPOSE

This Background Information Document (BID) provides initial information to stakeholders about the EIA process to be undertaken for the proposed project.

### YOUR ROLE

You have been identified as an interested and affected party (I&AP) who would like to be informed about the proposed project and have input into the EIA process.

You have an opportunity to review this Background Information Document and to provide your initial comments to SLR for incorporation in the EIA process.

You will also be given the opportunity to register as a stakeholder, provide input at a public meeting, and to review and comment on the Scoping Report and EIA Report.

All comments will be recorded and included in the reports submitted to the Competent Authorities for decision-making.

### HOW TO RESPOND

Responses to this document can be submitted by means of the attached comments sheet and/or through communication with the person listed below.

### WHO TO CONTACT

#### SLR Consulting

Candice Sadan

(021) 461 1118 (Tel)

(011) 467 0978 (Fax)

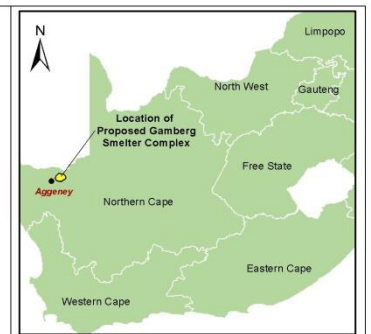
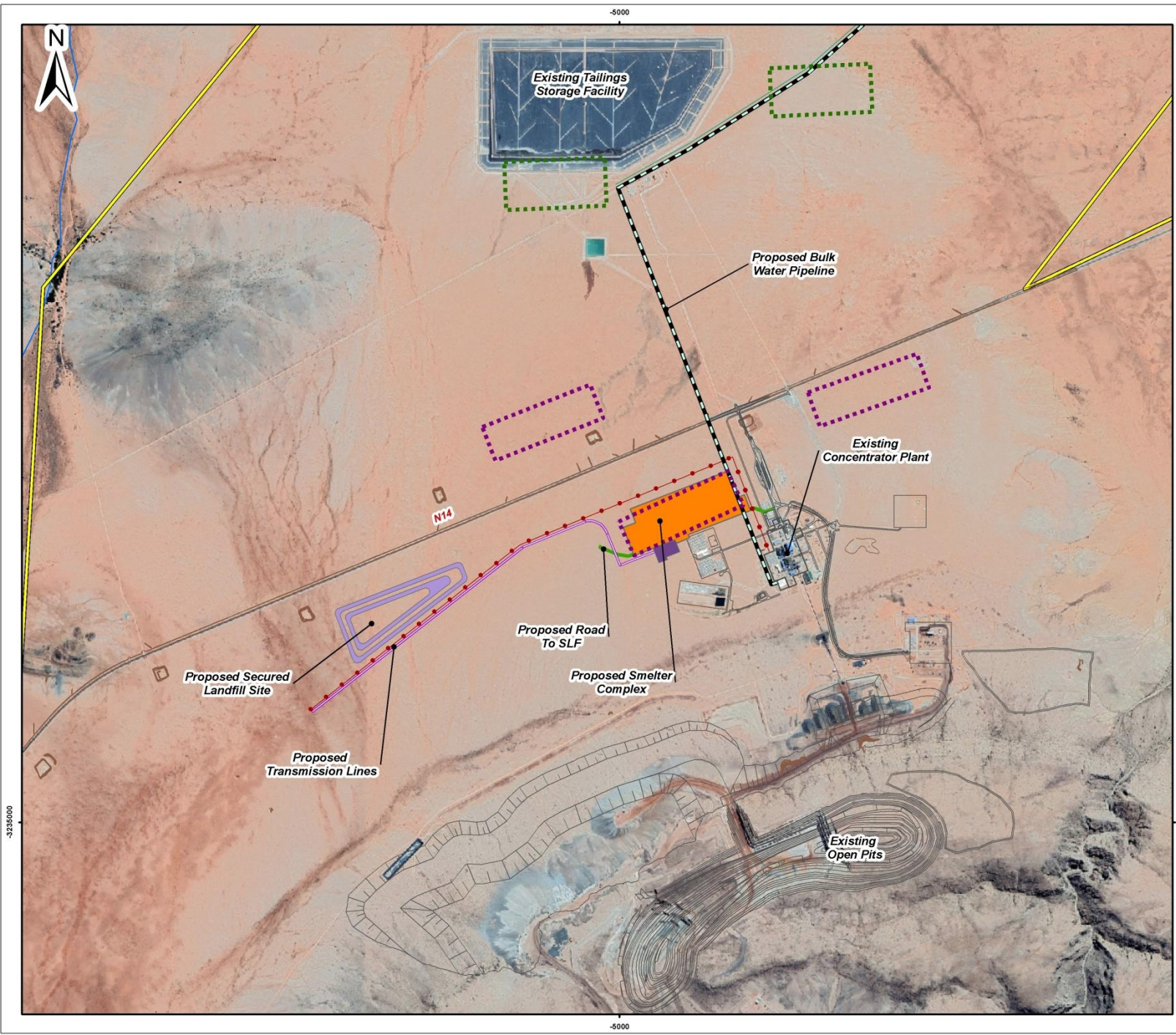
[csadan@slrconsulting.com](mailto:csadan@slrconsulting.com)

PO Box 1596, Cramerview 2060

**Please submit initial comments to SLR by 15 November 2019. You will also have an opportunity to comment on the Scoping and EIA reports.**

**All registered I&APs will be notified when public meetings are taking place.**





- Legend**
- Mining Right Area
  - Existing Infrastructure
  - Alternative SLF Locations
  - Alternative Smelter Complex Locations
- Proposed Infrastructure**
- Bulk Water Pipeline
  - Secured Landfill Site
  - Switch Yard
  - Smelter Complex Footprint
  - Smelter Roads
  - Transmission Line
  - 66kv Transmission Line

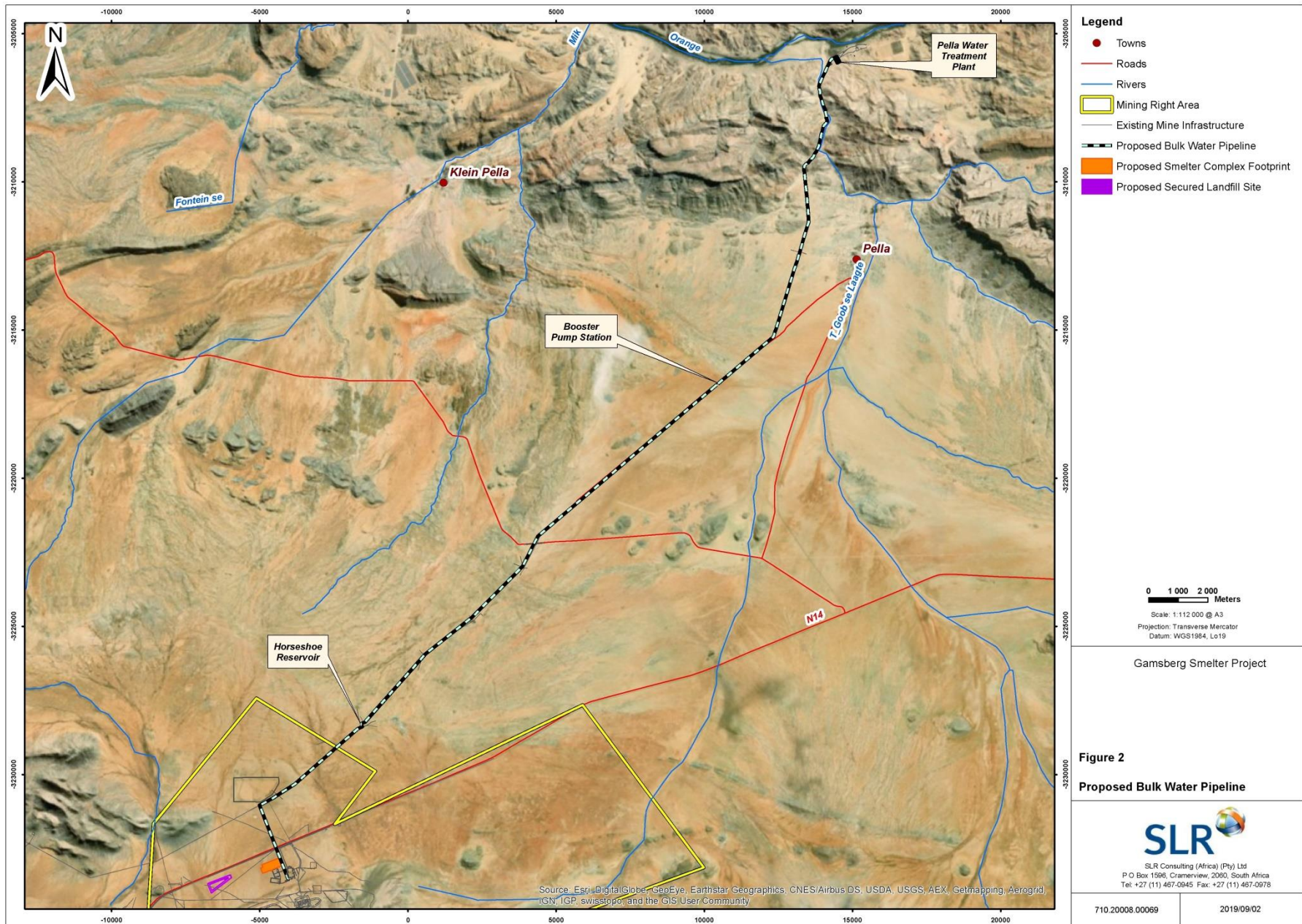
0 200 400 Meters  
 Scale: 1:23 000 @ A3  
 Projection: Transverse Mercator  
 Datum: WGS1984, Lo23

Gamsberg Smelter Project

**Figure 1**  
**Proposed Gamsberg Smelter Complex**

**SLR**  
 SLR Consulting (Africa) (Pty) Ltd  
 P O Box 1596, Cramerview, 2060, South Africa  
 Tel: +27 (11) 487-0945 Fax: +27 (11) 487-0978





- Legend**
- Towns
  - Roads
  - Rivers
  - Mining Right Area
  - Existing Mine Infrastructure
  - Proposed Bulk Water Pipeline
  - Proposed Smelter Complex Footprint
  - Proposed Secured Landfill Site

0 1 000 2 000 Meters  
 Scale: 1:112 000 @ A3  
 Projection: Transverse Mercator  
 Datum: WGS1984, Lo19

Gamsberg Smelter Project

**Figure 2**  
**Proposed Bulk Water Pipeline**

**SLR**  
 SLR Consulting (Africa) (Pty) Ltd  
 P O Box 1596, Cramerville, 2060, South Africa  
 Tel: +27 (11) 467-0945 Fax: +27 (11) 467-0976

710.20008.00069 2019/09/02

Source: Esri, DigitalGlobe, GeoEye, Earthstar Geographics, CNES/Airbus DS, USDA, USGS, AEX, Getmapping, Aerogrid, IGN, IGP, swisstopo, and the GIS User Community

## PURPOSE OF THIS DOCUMENT

This BID has been prepared by SLR to inform you about:

- \* The proposed project;
- \* The baseline environment of the project area;
- \* The EIA process to be followed;
- \* Possible environmental and social issues; and
- \* How you can have input into the process.

## GAMSBERG SMELTER PROJECT OVERVIEW

### INTRODUCTION

The Gamsberg Zinc Mine is an existing mine producing up to 4 mtpa of ore with associated waste rock dumps; mine machinery fleet and workshops. The concentrator plant (Figure 3) would produce up to 300 000 tons of zinc (metal in concentrate) per annum with associated stockpile areas, tailings facility and supporting infrastructure (i.e. water supply distribution network, laboratories, sewage works and an office complex). Water is currently extracted from the Orange River and transferred to the Gamsberg Zinc Mine via the existing aboveground Sedibeng Water pipeline.



Figure 3. Gamsberg Mine Existing Infrastructure

### MOTIVATION

In order to add value to the zinc concentrate being produced at the Gamsberg Zinc Mine, Black Mountain Mining (Pty) Ltd wishes to develop a smelter and produce higher value zinc ingots for export. This is in line with the Government of South Africa's National Industrial Policy Framework that aims to attract Foreign Direct Investment, fully beneficiate minerals and export of value-added commodities.

### GAMSBERG SMELTER PROJECT

Black Mountain Mining (Pty) Ltd is proposing to construct an electrolytic zinc smelter (the "smelter") for treating concentrates produced solely from the recently commissioned ore concentrator plant. The proposed smelter will produce 300 000 tons per annum (tpa) of zinc ingots and other products which can then be sold on the open market.

The proposed smelter will generate numerous products through a process of roasting (acid forming), leaching (jarosite forming) and purification (removal of metallic impurities as well as gypsum) and electrowinning where zinc deposition on a cathode occurs. (. The deposited zinc is

stripped from the cathodes and is converted into zinc ingots in the melting and casting section.

The zinc ingots and sulphuric acid will be sold and waste products will need to be safely disposed. Mineral wastes will either be disposed of via a secured landfill site to the west of the smelter or into the existing tailings storage facility.

The primary support services and infrastructure associated with the proposed smelter project includes an internal site entrance and access controls, weigh bridge, clean and dirty storm water management, overhead transmission lines, and a secure landfill site (Figure 1). Access to the facility would remain via the N14, as per current operations. Potable water would be sourced from Sedibeng Water and electricity from Eskom Aggeneys Substation. Liquid effluent from the site is planned to be treated on-site by sewage and effluent treatment plants.

### PELLA BULK WATER PIPELINE

A new 39km bulk water pipeline would be constructed from the existing Orange River abstraction point to replace the old underground pipeline (Figure 2). The existing Pella Water Works would also be upgraded. The existing Pella Water Works would also be upgraded. The new pipeline would supply the increased potable water demands as a result of the smelter development. The new pipeline will be constructed within the old underground pipeline servitude.

The existing Eskom transmission line and Eskom Substation providing power to the booster pump station for the pipeline would also need to be upgraded.

### PROJECT ALTERNATIVES

The process of considering alternatives is on-going and will form part of the EIA process. Alternatives considered for the proposed project include footprint, locality and technology alternatives.

## STATUS OF EXISTING ENVIRONMENT

The biodiversity of the Gamsberg inselberg and surrounds is considered as extremely sensitive and the Gamsberg Mine already has a number of 'set aside' areas and offset agreements in place as required by the existing EA issued by the Northern Cape Department of Environment and Nature Conservation (NCDENC).

In a water scarce environment groundwater resources in the Namakwa District, although more abundant than surface water features, are very important especially for livestock farmers.

In addition, the region has high unemployment rates at municipal, district and provincial level with mining activities forming the cornerstone of the local economy.

As a result the EIA will need to consider biophysical and social aspects of the area to better understand the social and environmental sensitivities.

## REGULATORY PROCESS TO BE FOLLOWED

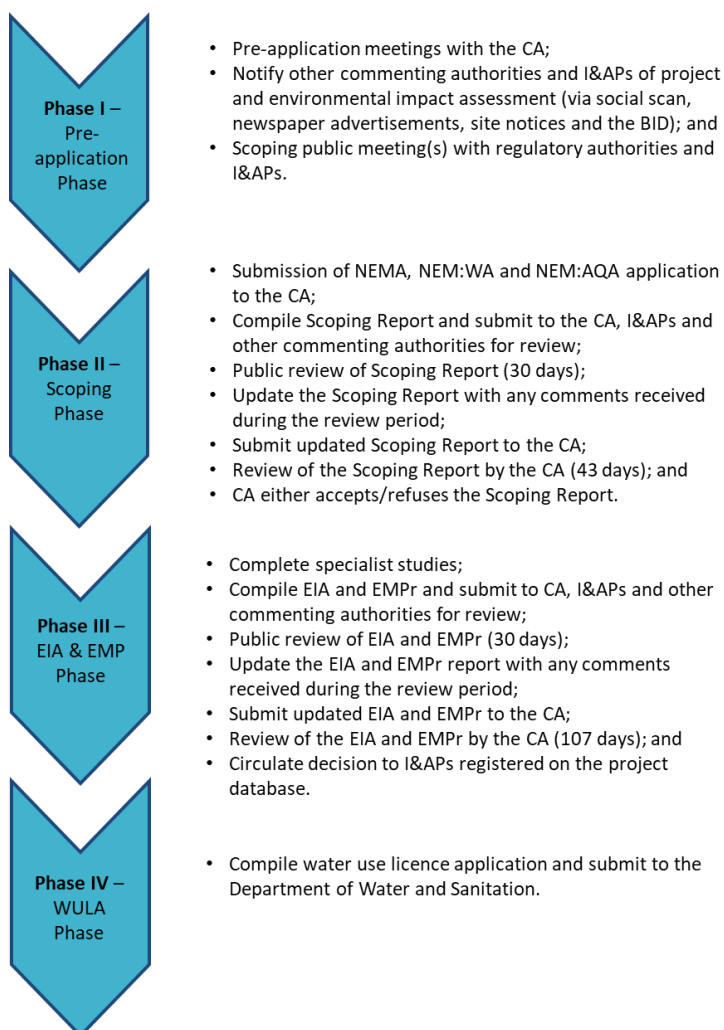
The EIA regulatory process that will be followed:

- provides information on the project;
- documents the affected environment in which it is being undertaken;
- identifies, in consultation with interested and/or affected parties (I&APs), the potential negative as well as positive impacts of the proposed project; and
- reports on management measures required to mitigate impacts to an acceptable level.

The process steps and timeframes are in accordance with the EIA Regulations, 2014 and are outlined below.

### STEPS IN THE EIA PROCESS

The likely process steps and timeframes are provided below. Registered I&APs and other stakeholders on the project's database will receive notification of public participation opportunities in advance.



## PARTIES INVOLVED IN THE ENVIRONMENTAL APPLICATION PROCESS

### REGULATORY AUTHORITIES

- \* Northern Cape Department of Environment and Nature Conservation (NCDENC);
- \* Department of Human Settlements, Water and Sanitation (DHSWS).
- \* Department of Minerals Resources and Energy (DMRE)
- \* South Africa Heritage Resource Agency (SAHRA);
- \* Department of Agriculture, Forestry and Fisheries (DAFF);
- \* Northern Cape Department of Roads and Transport (NCDRT); and
- \* Northern Cape Department of Rural Development and Land Reform (NCDRLR), including land claims commissioner.

### LOCAL AUTHORITIES

- \* Namakwa District Municipality;
- \* Khai-Ma Local Municipality; and
- \* Ward Councillors.

### I&APs

- \* Adjacent land owners and surrounding communities, land users and owners;
- \* Interested Parties
- \* Non-governmental organisations and associations; and
- \* Parastatals.

Please let us know of additional parties that should be involved.

BLACK MOUNTAIN MINING (PTY) LIMITED

BACKGROUND INFORMATION DOCUMENT FOR THE PROPOSED GAMSBERG SMELTER AND BULK WATER PIPELINE PROJECT.

REGISTRATION AND RESPONSE FORM FOR INTERESTED AND AFFECTED PARTIES

OCTOBER 2019

DATE		TIME	
<b>PARTICULARS OF THE INTERESTED AND AFFECTED PARTY</b>			
<b>NAME</b>			
<b>POSTAL ADDRESS</b>			
		<b>POSTAL CODE</b>	
<b>STREET ADDRESS</b>			
		<b>CODE</b>	
<b>WORK/ DAY TELEPHONE NUMBER</b>		<b>WORK/ DAY FAX NUMBER</b>	
<b>CELL PHONE NUMBER</b>		<b>E-MAIL ADDRESS</b>	

**PLEASE IDENTIFY YOUR INTEREST IN THE PROPOSED PROJECT**

--

**PLEASE WRITE YOUR COMMENTS AND QUESTIONS HERE**

--

**PLEASE NOTIFY SLR OF ANY OTHER INTERESTED AND AFFECTED PARTY THAT SHOULD BE INCLUDED IN THIS ESIA PROCESS.**

--

**Please return completed forms to:**

**SLR Consulting, attention: Candice Sadan**

**(Tel) (021) 461 1118**

**(011) 467 0978 (Fax)**

**[csadan@slrconsulting.com](mailto:csadan@slrconsulting.com)**

**PO Box 1596, Cramerview 2060**

**Please submit initial comments to SLR by 15 November 2019. You will also have an opportunity to comment on the S&EIA. All registered I&APs will be notified when public meetings are taking place.**

# AGTERGRONDINLIGTINGSDOKUMENT

## OIE VIR DIE BEOOGDE GAMSBERG SMELTERYPROJEK NABY

### AGGENEYS, NOORD-KAAP

OKTOBER 2019

#### INLEIDING

Black Mountain Mining (Edms.) Bpk., deel van die Vedanta-groep, besit en bedryf die Gamsberg Sinkmyn. Die Gamsberg Sinkmyn Fase 1 word bedryf ingevolge 'n Omgewingsmagtiging (Verw.: NC/EIA/NAM/KHA/AGG/2012) gedateer 12 Augustus 2013. Die Gamsberg Sinkmyn is 'n tot 10 miljoen ton per jaar (mtpa) oopgroefsinkmyn, tesame met 'n konsentratooraanleg en verwante infrastruktuur. Die Gamsberg Sinkmyn is 14 km oos van die dorp Aggeneys, Noord-Kaapprovinsie, op Gedeelte 1 van die plaas Bloemhoek 61, Gedeelte 1 van Gams 60, en die Restant van Aroams 57.

Black Mountain Mining (Edms.) Bpk. beoog om 'n nuwe sinksmeltery (Figuur 1) en verwante infrastruktuur (nuwe beveiligde stortingsterrein, transmissiekraglyn en interne toegangspaaie) op te rig. Sedibeng Water se ondergrondse pyplyn vanaf die Oranjerivier (naby die dorp Pella) tot by die smeltery (Figuur 2) vereis ook opgradering om die smelteryprojek te ondersteun. Die opgradering van die ou ondergrondse pyplyn is nodig om die pyplyn se stabiliteit te verbeter en om voorsiening te maak vir addisionele grootmaatwatertoevoer.

#### OMGEWINGSMAGTIGINGSPROSES

Vir die beoogde projek (sinksmeltery, verwante infrastruktuur en opgradering van die grootmaatwaterpyplyn) om voort te gaan, word 'n Omgewings- en Maatskaplike Impakevaluering (OIE) vereis, wat 'n aansoek-, bestekopname- en Omgewingsimpakevalueringfase (OIE-fase) insluit, asook die opstel van 'n verwante Omgewingsbestuursprogram (OBP). Die evaluering moet ingevolge die Nasionale Wet op Omgewingsbestuur, 1998 (Wet 107 van 1998) (NEMA) en die verwante Regulasies (2014) onderneem word. Daarbenewens sal die beoogde projek ook 'n magtiging vereis ingevolge die Nasionale Waterwet, Wet 36 van 1998; die Nasionale Wet op Omgewingsbestuur: Afval, Wet 59 van 2008 (NEM:WA), asook die Nasionale Wet op Omgewingsbestuur: Luggehalte, Wet 39 van 2004 (NEM:AQA).

SLR Consulting (South Africa) (Edms.) Bpk. (SLR), 'n onafhanklike firma van omgewingskonsultante, is aangestel om die omgewingsreguleringsprosesse te bestuur en om die openbare deelname ter ondersteuning van die aansoeke vir die beoogde sinksmeltery en opgradering van die verwante grootmaatwaterpyplyn te onderneem.

#### DOELWIT

Hierdie Agtergrondinligtingsdokument (AID) bied voorlopige inligting aan belanghebbers oor die OIE-proses wat vir die beoogde projek onderneem moet word.

#### U ROL

U is as 'n belangstellende en geaffekteerde party (B&GP) geïdentifiseer wat ingelig wil word oor die beoogde projek en wat insae in die OIE-proses wil hê.

U het 'n geleentheid om hierdie Agtergrondinligtingsdokument na te gaan en om u voorlopige kommentaar aan SLR te voorsien vir insluiting in die OIE-proses.

U sal ook die geleentheid kry om as 'n belanghebbende te registreer, insette by 'n openbare vergadering te lewer en om die Bestekopname- en OIE-verslag na te gaan en daarop kommentaar te lewer.

Alle kommentaar sal aangeteken en ingesluit word in die verslae wat by die Bevoegde Owerhede ingedien word vir besluitneming.

#### HOE OM TE REAGEER

Reaksie op hierdie dokument kan ingedien word by wyse van die aangehegte kommentaarvorm en/of deur kommunikasie met die onderstaande persoon.

#### WIE OM TE KONTAK

##### SLR Consulting

Candice Sadan

Tel: 021 461 1118

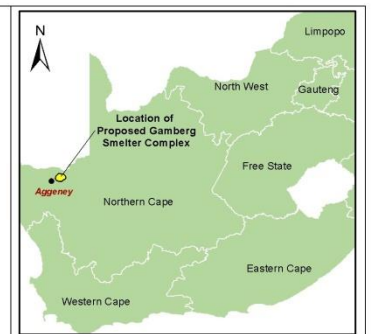
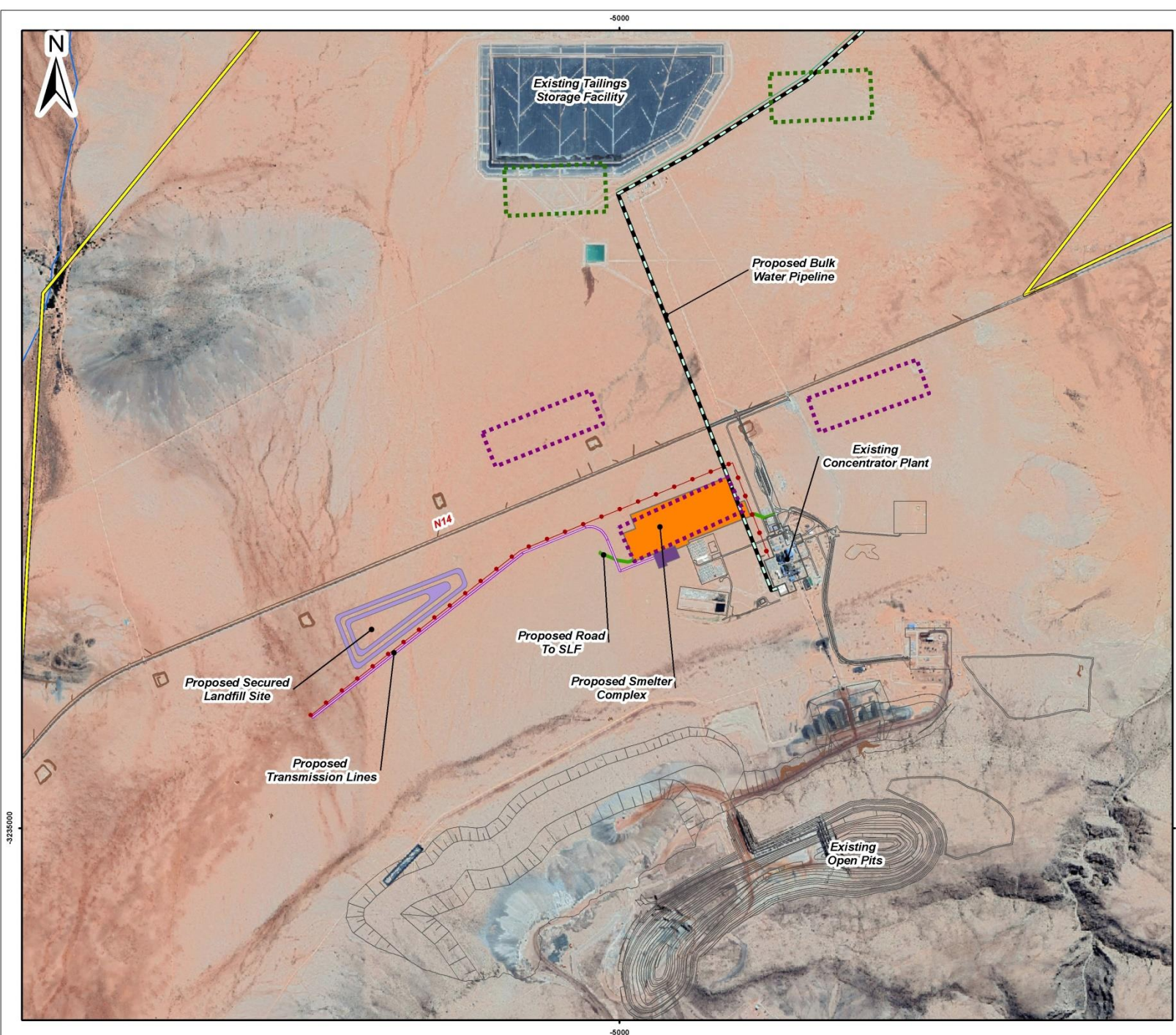
Faks: 011 467 0978

E-pos: [csadan@slrconsulting.com](mailto:csadan@slrconsulting.com)

Pos: Posbus 1596, Cramerview 2060

**Dien asseblief voorlopige kommentaar in by SLR teen 15 November 2019. U sal ook 'n geleentheid hê om kommentaar te lewer op die Bestekopname- en OIE-verslag.**

**Alle geregistreeerde B&GP's sal in kennis gestel word wanneer openbare vergaderings plaasvind.**



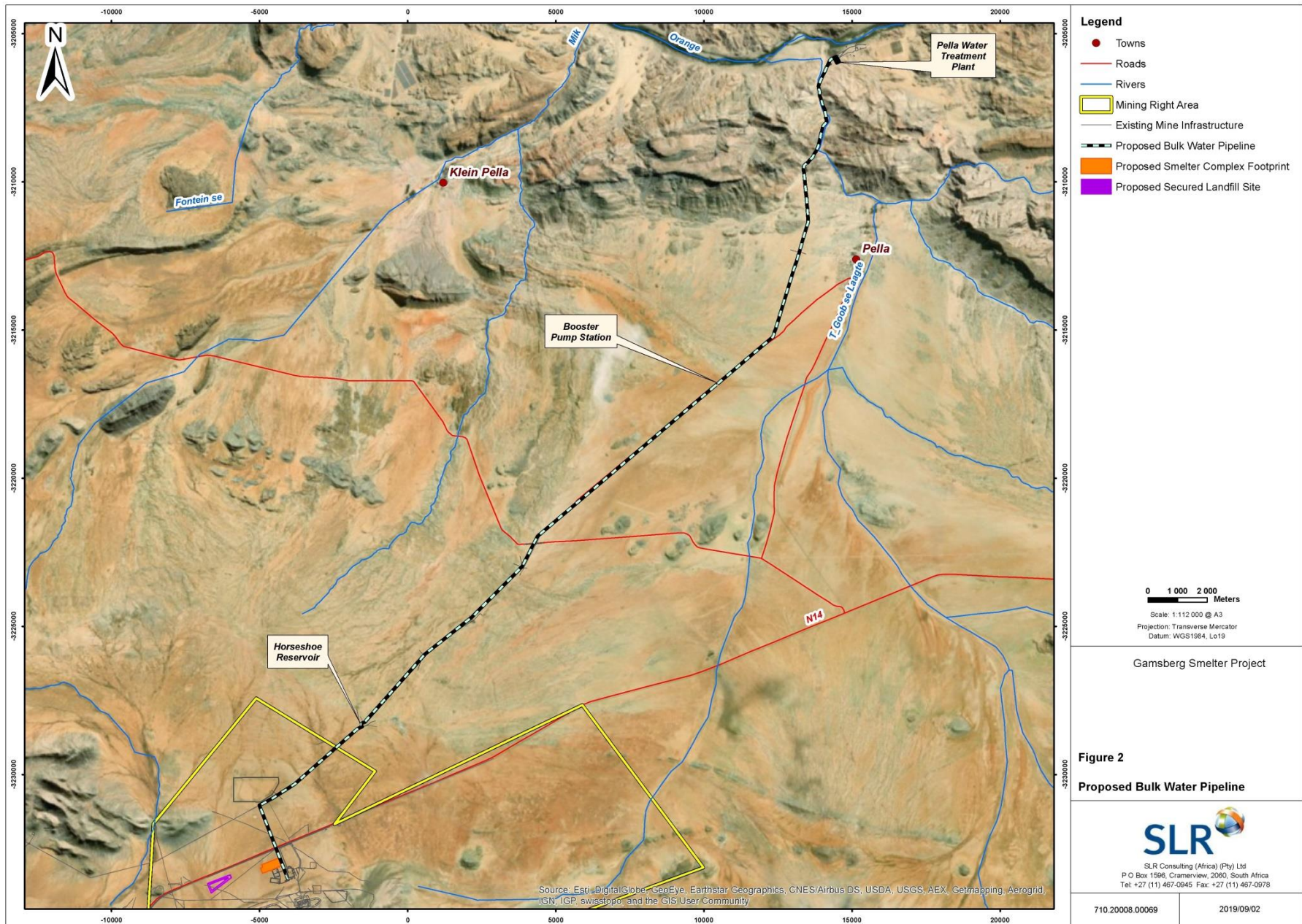
- Legend**
- Mining Right Area
  - Existing Infrastructure
  - Alternative SLF Locations
  - Alternative Smelter Complex Locations
- Proposed Infrastructure**
- Bulk Water Pipeline
  - Secured Landfill Site
  - Switch Yard
  - Smelter Complex Footprint
  - Smelter Roads
  - Transmission Line
  - 66kv Transmission Line

0 200 400 Meters  
 Scale: 1:23 000 @ A3  
 Projection: Transverse Mercator  
 Datum: WGS1984, Lo23

Gamsberg Smelter Project

**Figure 1**  
**Proposed Gamsberg Smelter Complex**

**SLR**  
 SLR Consulting (Africa) (Pty) Ltd  
 P O Box 1596, Cramerview, 2060, South Africa  
 Tel: +27 (11) 487-0945 Fax: +27 (11) 487-0978



- Legend**
- Towns
  - Roads
  - Rivers
  - ▭ Mining Right Area
  - Existing Mine Infrastructure
  - - - Proposed Bulk Water Pipeline
  - Proposed Smelter Complex Footprint
  - Proposed Secured Landfill Site

0 1 000 2 000 Meters  
 Scale: 1:112 000 @ A3  
 Projection: Transverse Mercator  
 Datum: WGS1984, Lo19

Gamsberg Smelter Project

**Figure 2**  
**Proposed Bulk Water Pipeline**

**SLR**

SLR Consulting (Africa) (Pty) Ltd  
 P O Box 1596, Cramerville, 2090, South Africa  
 Tel: +27 (11) 467-0945 Fax: +27 (11) 467-0978

710.20008.00069 | 2019/09/02

Source: Esri, DigitalGlobe, GeoEye, Earthstar Geographics, CNES/Airbus DS, USDA, USGS, AEX, Getmapping, Aerogrid, IGN, IGP, swisstopo, and the GIS User Community

## DOEL VAN HIERDIE DOKUMENT

Hierdie AID is opgestel deur SLR om u toe te lig oor:

- \* die beoogde projek;
- \* die projekgebied se huidige (grondlyn-) omgewing;
- \* die OIE-proses wat gevolg moet word;
- \* moontlike omgewings- en maatskaplike kwessies; en
- \* hoe u insette in die proses kan lewer.

## OORSIG VAN DIE GAMSBERG SMELTERYPROJEK

### INLEIDING

Die Gamsberg Sinkmyn is 'n bestaande myn wat tot 4 mtpa erts produseer, met verwante afvalkliphope; 'n mynmasjinerievloot en werkswinkels. Die konsentratoraanleg (Figuur 3) sal tot 300 000 ton sink (metaal in konsentraat) per jaar produseer, met verwante voorraadstapelwerfgebiede, 'n uitskootaanleg en steun-infrastruktuur (d.i. 'n watertoevoerdistribusienetwerk, laboratoriums, rioolwerke en 'n kantoorkompleks). Water word tans uit die Oranjerivier onttrek en na die Gamsberg Sinkmyn via die bestaande boggrondse Sedibeng Waterpyplyn vervoer.



**Figuur 3. Gamsberg-myn Bestaande Infrastruktuur**

### MOTIVERING

Ten einde waarde toe te voeg tot die sinkkonsentraat wat by die Gamsberg Sinkmyn geproduseer word, is Black Mountain Mining (Edms.) Bpk. van voorneme om 'n smeltery te ontwikkel en om hoër waarde sinkgietblokke vir uitvoer te produseer. Dit is in lyn met die Suid-Afrikaanse Regering se Nasionale Nywerheidsbeleidsraamwerk wat poog om Buitelandse Regstreekse Belegging te lok, minerale ten volle te veredel en waardetoegevoegde kommoditeite uit te voer.

### GAMSBERG SMELTERYPROJEK

Black Mountain Mining (Edms.) Bpk. beoog die oprigting van 'n elektrolitiese sinksmeltery (die "smeltery") vir die behandeling van konsentrate wat uitsluitlik uit die ertskonsentratoraanleg wat onlangs in bedryf gestel is, geproduseer word. Die beoogde smeltery sal 300 000 ton per jaar (tpa) sinkgietblokke en ander produkte wat dan op die opemark verkoop kan word, produseer.

Die beoogde smeltery sal verskeie produkte genereer deur 'n proses van rooster (suurvormend), uitloging (jarosietvormend), suiwing (verwydering van metaalagtige onsuierhede, asook gips) en elektrowinning, waar sinkafsetting op 'n katode plaasvind. Die afgesette sink word

van die katodes af gestroop en in die smelt- en gietafdeling omgeskakel in sinkgietblokke.

Die sinkgietblokke en swaelsuur sal verkoop word en afvalprodukte sal veilig mee weggedoen moet word. Mineraleafval sal hetsy mee weggedoen word via 'n beveiligde stortingsterrein wes van die smeltery of na die bestaande uitskotbergingsaanleg.

Die primêre steundienste en infrastruktuur wat verband hou met die beoogde smelteryprojek, sluit 'n interne terrein-ingang en toegangsbeheer, weegbrug, skoon en vuil stormwaterbestuur, oorhoofse transmissiekraglyne en 'n beveiligde stortingsterrein in (Figuur 1). Toegang tot die aanleg sal steeds via die N14 wees, soos met huidige bedrywighede. Drinkwater sal by Sedibeng Water bekom word en elektrisiteit by Eskom se Aggeneys Substasie. Die beplanning is om die terrein se vloeibare afloopwater intern deur riool- en afloopwaterbehandelingsaanlegte te behandel.

### PELLA GROOTMAATWATERPYPLYN

'n Nuwe 39 km grootmaatwaterpyplyn sal vanaf die bestaande Oranjerivier onttrekkingspunt opgerig word om die ou ondergrondse pyplyn te vervang (Figuur 2). Die bestaande Pella Waterwerke sal ook opgegradeer word. Die nuwe pyplyn sal voorsien in die groter vraag na drinkwater as gevolg van die smelteryontwikkeling. Die nuwe pyplyn sal binne-in die ou ondergrondse pyplynserwituut opgerig word.

Die bestaande Eskom transmissiekraglyn en Eskom substasie wat krag aan die aanjaagpompstasie vir die pyplyn voorsien, sal ook opgegradeer moet word.

### PROJEKALTERNATIEWE

Die oorweging van alternatiewe is deurlopend en sal deel vorm van die OIE-proses. Alternatiewe wat vir die beoogde projek oorweeg word, sluit in voetspoor-, liggings- en tegnologie-alternatiewe.

## STATUS VAN HUIDIGE OMGEWING

Die Gamsberg eilandberg en omstreke se biodiversiteit word as uiters sensitief geag en die Gamsberg-myn het reeds 'n aantal gebiede 'opsy gesit' en het teenwigooreenkomste in plek, soos vereis word deur die bestaande OM wat uitgereik is deur die Noord-Kaapse Departement van Omgewingsake en Natuurbewaring (NCDENC).

Hoewel grondwaterhulpbronne meer volop as oppervlakwaterkenmerke in die Namakwadistrik is, is dit baie belangrik in 'n waterskaars omgewing, veral vir boere met lewendehawe.

Voorts het die streek ook hoë werkloosheidsyfers op munisipale, distriks- en provinsiale vlak, met mynbou-bedrywighede wat die hoeksteen van die plaaslike ekonomie vorm.

Gevolglik sal die OIE biofisiese en maatskaplike aspekte van die gebied in ag moet neem om 'n beter begrip van die maatskaplike en omgewingsensitiwiteit te kry.



## REGULERINGSPROSES WAT GEVOLG MOET WORD

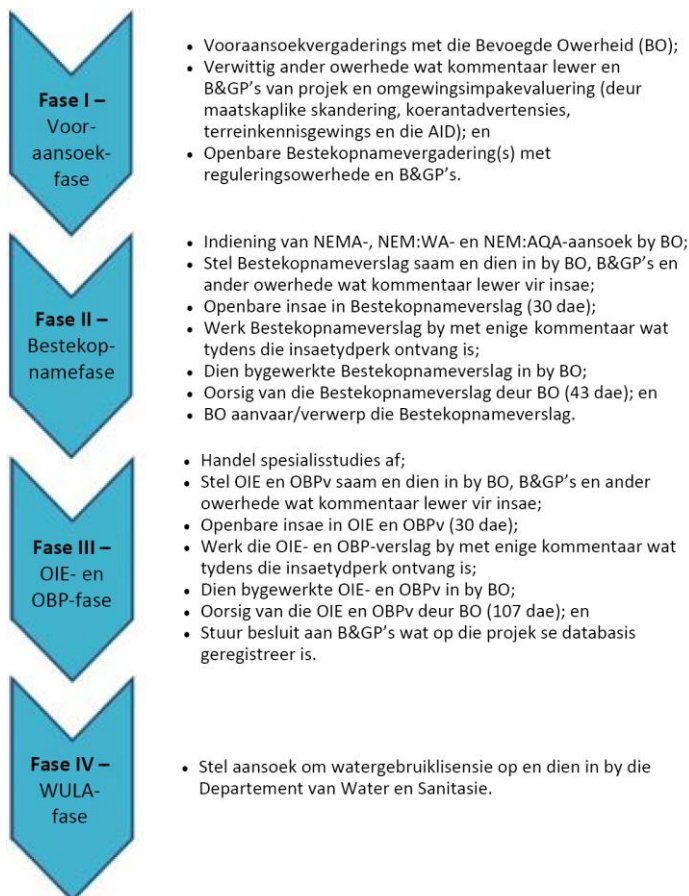
Die OIE-reguleringsproses wat gevolg sal word:

- bied inligting oor die projek;
- boekstaaf die geaffekteerde omgewing waarin dit onderneem word;
- identifiseer die potensiële negatiewe en positiewe impakte van die beoogde projek in oorleg met belangstellende en/of geaffekteerde partye (B&GP's); en
- doen verslag oor bestuursmaatreëls wat benodig word om impakte tot op 'n aanvaarbare vlak te versag.

Die stappe en tydsraamwerke van die proses is ooreenkomstig die OIE-regulasies, 2014 en word hieronder uiteengesit.

### STAPPE IN DIE OIE-PROSES

Die proses se waarskynlike stappe en tydsraamwerke word hieronder verskaf. Geregistreeerde B&GP's en ander belanghebbers op die projek se databasis, sal voortydig in kennis gestel word van geleentheid vir openbare deelname.



## PARTYE BETROKKE BY DIE OMGEWINGSAANSOEKPROSES

### REGULERINGSOWERHEDE

- \* Noord-Kaapse Departement van Omgewingsake en Natuurbewaring (NCDENC);
- \* Departement van Menslike Nedersettings, Water en Sanitasie (DHSWS);
- \* Departement van Minerale Hulpbronne en Energie (DMRE);
- \* Suid-Afrikaanse Erfenisulphronagentskap (SAHRA);
- \* Departement van Landbou, Bosbou en Visserie (DAFF);
- \* Noord-Kaapse Departement van Paaie en Vervoer (NCDRT); en
- \* Noord-Kaapse Departement van Landelike Ontwikkeling en Grondhervorming (NCDRDLR); met insluiting van die Kommissaris van Grondeise.

### PLAASLIKE OWERHEDE

- \* Namakwa Distriksmunisipaliteit;
- \* Khai-Ma Plaaslike Munisipaliteit; en
- \* Wyksraadslede.

### B&GP's

- \* Naasliggende grondeienaars en omliggende gemeenskappe, grondgebruikers en -eienaars;
- \* Belangstellende partye;
- \* Nie-regeringsorganisasies en -verenigings; en
- \* Semi-staatsinstansies.

**Verwittig ons asseblief van addisionele partye wat betrokke moet wees.**

**BLACK MOUNTAIN MINING (EDMS.) BEPERK**

**AGTERGRONDINLIGTINGSDOKUMENT VIR DIE BEOOGDE GAMSBERG SMELTERY EN GROOTMAATWATERPYPLYNPROJEK.  
REGISTRASIE- EN ANTWOORDVORM VIR BELANGSTELLEDE EN GEAFFEKTEERDE PARTYE  
OKTOBER 2019**

<b>DATUM</b>		<b>TYD</b>	
<b>BESONDERHEDE VAN DIE BELANGSTELLEDE EN GEAFFEKTEERDE PARTY</b>			
<b>NAAM</b>			
<b>POSADRES</b>			
		<b>POSKODE</b>	
<b>STRAATADRES</b>			
		<b>KODE</b>	
<b>TELEFOONNOMMER BY DIE WERK/BEDAGS</b>		<b>FAKSNOMMER BY DIE WERK/BEDAGS</b>	
<b>SELFOONNOMMER</b>		<b>E-POSADRES</b>	

**IDENTIFISEER ASSEBLIEF U BELANG BY DIE BEOOGDE PROJEK**

**SKRYF U VRAE EN KOMMENTAAR ASSEBLIEF HIER NEER**

**VERWITIG SLR ASSEBLIEF VAN ENIGE ANDER BELANGSTELLEDE EN GEAFFEKTEERDE PARTY WAT IN HIERDIE OIE-PROSES INGESLUIT MOET WORD.**

**Stuur ingevulde vorms asseblief terug aan:**  
**SLR Consulting, vir aandag: Candice Sadan**  
 Tel: 021 461 1118  
 Faks: 011 467 0978  
 E-pos: [csadan@slrconsulting.com](mailto:csadan@slrconsulting.com)  
 Pos: Posbus 1596, Cramerview 2060

Dien voorlopige kommentaar asseblief in by SLR teen 15 November 2019.  
 U sal ook 'n geleentheid hê vir kommentaar op die B&OIE.  
 Alle geregistreerde B&GP's sal in kennis gestel word wanneer openbare vergaderings plaasvind.

**From:** Candice Sadan  
**Sent:** Monday, 18 November 2019 11:23  
**To:** Candice Sadan  
**Cc:** Kate Hamilton  
**Subject:** Gamsberg Smelter Project AND Pella Bulk Water Pipeline: Public Meeting Notification  
**Attachments:** 2019-10-16 Gamsberg smelter and pipeline\_BID-V0.13.pdf; 2019-10-16 Gamsberg smeltery en Grootmaatpyplyn\_AID-V0.3.pdf

**EIA FOR THE PROPOSED GAMSBERG SMELTER PROJECT, NEAR AGGENEYS NORTHERN CAPE AND BASIC  
ASSESSMENT PROCESS FOR THE PELLA BULK WATER PIPELINE  
PUBLIC PARTICIPATION PROCESS**

Dear Sir/Madam

Black Mountain Mining (Pty) Ltd, part of the Vedanta Zinc International, owns and operates the Gamsberg Zinc Mine. In 2010 Vedanta Resources acquired Black Mountain Mining (Pty) Ltd from Anglo American as part of the acquisition of the Zinc base metal mine take over. Following the acquisition of the Black Mountain Mining properties and rights a feasibility and optimisation of technology for the Gamsberg Zinc Mine was done.

Black Mountain Mining (Pty) Ltd is now proposing to construct a new zinc smelter and associated infrastructure to beneficiate the 250 000 to 300 000 tonnes per annum (tpa) of zinc concentrate produced at the Gamsberg Zinc Mine Phase-1 Concentrator Plant into final metal. The proposed smelter would treat the zinc concentrate from the Gamsberg mine to produce 99% pure special high grade zinc metal for export. As a by-product 99% Sulphuric Acid will also be produced for export and consumption in South Africa.

The relevant legislation and associated activities include but are not limited to the following:

- Environmental Authorisation from the Department of Mineral Resources (DMR) in terms of the National Environmental Management Act (NEMA). The proposed project incorporates several activities listed in the Environmental Impact Assessment Regulations, 2014 (EIA Regulations): Listing Notice's 1, 2 and 3, published in Government Notice (GN) No. 983, 984 and 985 of 4 December 2014 and amended by GN No. 327, 325 and 324 of 7 April 2017. The EIA regulations being followed in this study are the EIA Regulations, 2014 published in GN No. 982 of 4 December 2014 and amended by GN No. 326 of 7 April 2017.
- A Waste Management Licence (WML) from the DMR in terms of the National Environmental Management Waste Act (NEM:WA). The proposed project incorporates waste management activities listed in GNR 921 of 29 November 2013, as amended.
- A Water Use Licence (WUL) from the Department of Water and Sanitation (DWS) in terms of the National Water Act, 1998 (No. 36 of 1998) (NWA). The proposed project incorporates water uses in terms of Section 21 of the NWA.
- An Atmospheric Emissions Licence (AEL) in terms of the National Environmental Management: Air Quality Act, 2004 (Act No. 39 of 2004) (NEM:AQA).

In addition, A new 39km bulk water pipeline is proposed to be constructed from the existing Orange River abstraction point to replace the old underground pipeline. The existing Pella Water Works would also be upgraded. The new pipeline would supply the increased potable water demands as a result of the smelter development and would be constructed within the old underground pipeline servitude. A separate Water Use Licence Application (WULA) and Basic Assessment are being undertaken for the upgraded Pella Bulk Water Pipeline.

SLR Consulting (South Africa) (Pty) Ltd has been appointed as the independent environmental assessment practitioners responsible for undertaking the necessary environmental assessment and public participation process for the project. Given that the project triggers new listed activities, the environmental assessment will include both a Scoping and Environmental Impact Assessment phase in terms of the EIA Regulations (Government Notice 982 to 986, 4 December 2014).

You have been identified as a key stakeholder who may be interested in hearing more about the proposed project and to provide input into the environmental assessment process. This email therefore serves to invite you to a public meeting which has been arranged as part of the public participation process. There are meetings planned in each of the following: Aggeneys, Pella and Pofadder for your convenience. The details of the public meetings are provided below:

**Date:** 2 December 2019

**Venue:** Aggeneys North Recreation Club, Aggeneys, 8893

**Time:** 16:00 to 18:00

**Date:** 3 December 2019

**Venue:** Pella Community Hall, 129 Katedraal Str. Pella, 8892

**Time:** 10:00 to 12:00

**Date:** 4 December 2019

**Venue:** Pofadder Community Hall, Corner of Voortrekker and Skool Street, Pofadder, 8890

**Time:** 14:00 to 16:00

Please again see the attached Background Information Document for your information.

Comments can be submitted at various stages of the project as follows: in writing to the undersigned, at the public meetings and after review of the various reports.

Kind regards

**Candice Sadan**

Office Administrator

+27 21 461 1118

[csadan@slrconsulting.com](mailto:csadan@slrconsulting.com)

SLR Consulting  
SLR Consulting (Cape Town office)  
5th Floor, Letterstedt House, Newlands on Main  
Cnr Main and Campground Roads  
Newlands, Cape Town, Western Cape, 7700