

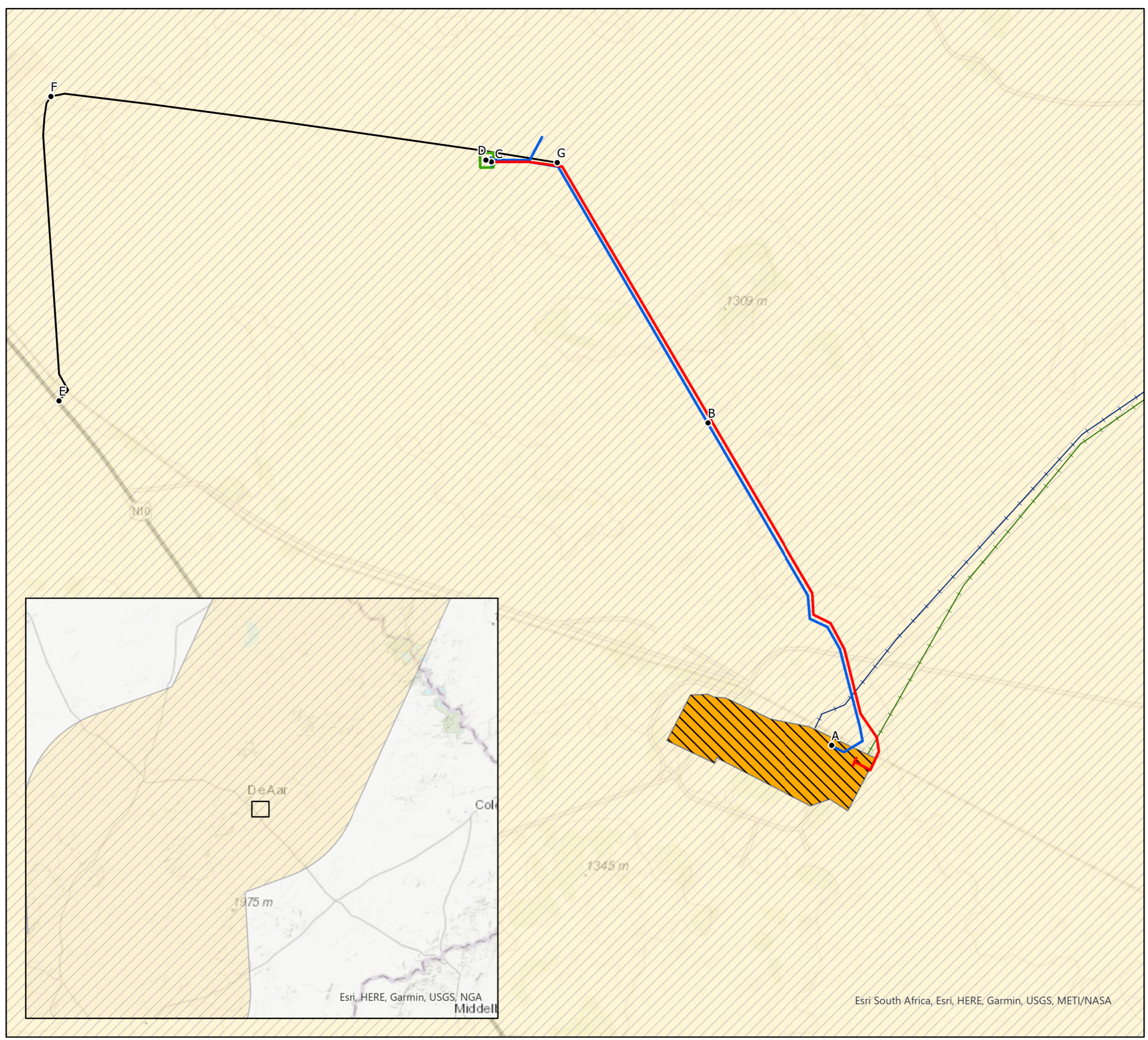
- Preferred Route - 132kV
- Hydra-Bushbuck Restriring Route 132kV
- Switching Station
- Access Road
- Hydra Substation
- Central Strategic Transmission Corridor
- Existing Longyuan Mulilo De Aar 2 North WEF Transmission Line
- Existing Hydra Roodekuil 220kV Transmission Line
- Development Points of Interest



Produced By: AVH	Ref: 4194-REP-006
Checked By: AB	Date: 2021/03/08

Proposed Site Development Plan
Figure 8.1

Mulilo Total Hydra Storage Project: Grid Interconnection Basic Assessment



Esri, HERE, Garmin, USGS, NGA Middell Esri South Africa, Esri, HERE, Garmin, USGS, METI/NASA