

Durban Office

P O Box 1692
Wandsbeck 3631
46 Essex Terrace, Westville, 3629
Tel: +27 (031) 266 7332
Fax : +27 (031) 266 7340
email: ibuya@ibuya.co.za

Johannesburg Office

P O Box 673
Halfway House, 1685
50 Bristol Road, Saxonwold, 2196
Tel : +27 (011) 447 7268
Fax: +27 (011) 442 0759
www.ibuya.co.za

OUR REF: 12017/0124/WL/jb

DATE: 23 August 2013

SAKHISIZWE ARCHITECTS
41 Swapo Road
Durban North
4051

Attention: Mrs L.Napier

Email: lanapier@mindscope.co.za

Dear Mrs L. Napier

PIETERITZBURG RAIL STATION GENERATOR POSITION MOTIVATION

This letter serves to motivate the proposed position of the new generator canopy.

After considering various options for the position of the sound attenuated generator it was concluded by the PRASA representative that the most feasible option would be adjacent to the existing electrical room as indicated on the attached layout.

The reasons being:

- It is behind a lockable security gate, therefore lowering the chances of vandalism or theft.
- Area is open aired allowing for ease of exhaust fume and sound dilution.
- Area has existing cable trench provisions into the PMB station. Allowing for ease of power reticulation.

It is proposed that the existing dilapidated redundant store room be demolished to accommodate the new generator canopy.

Due to the following:

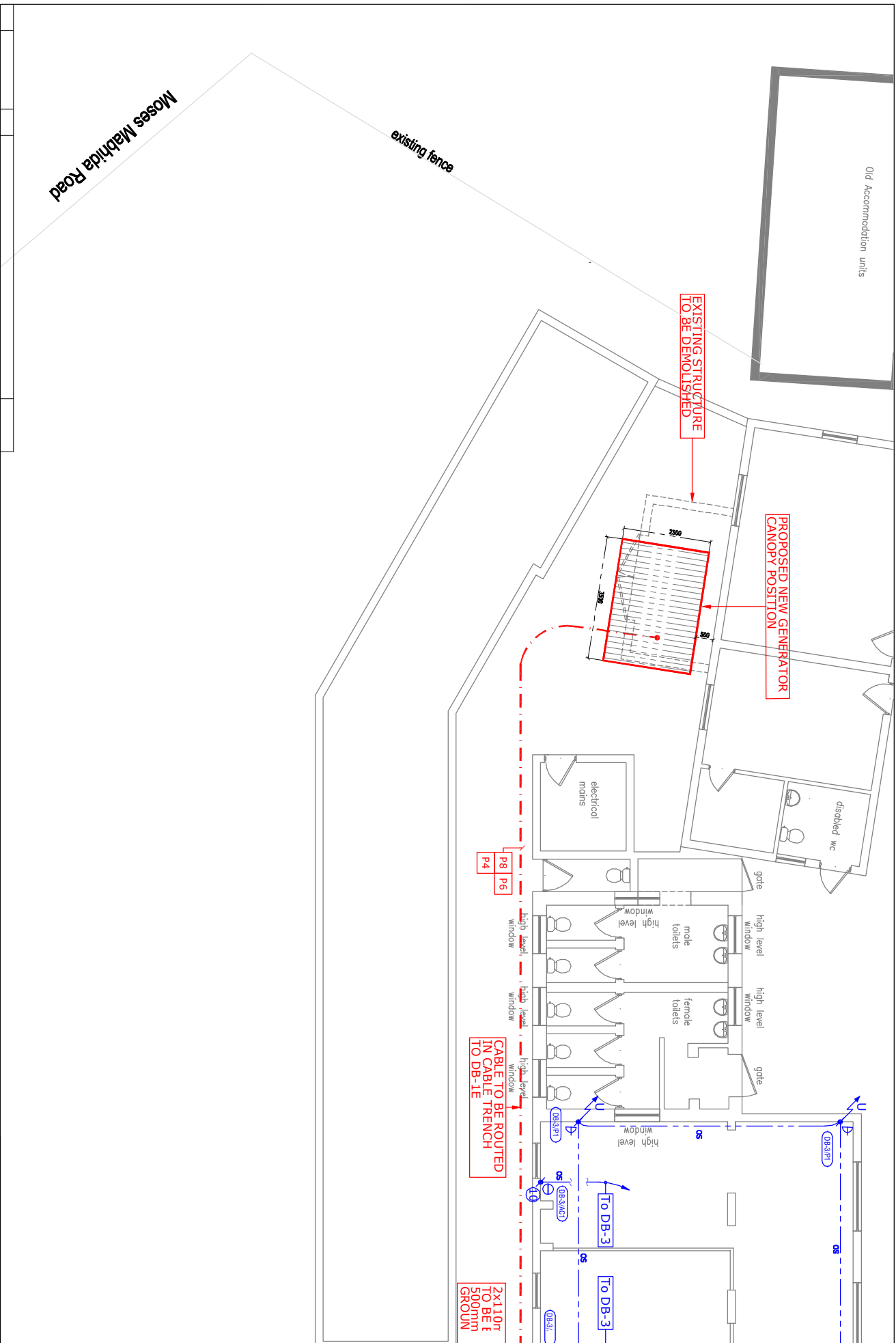
- The storeroom structure would unfortunately not be able to house the standby generator. Due to lack of manoeuvrability as well as sound attenuation and ventilation requirements.
- The generator would also not be able to be positioned outside the storeroom due to a lack of space.
- The structure itself is also in a bad state and may not be able to handle the generator vibrations without causing more damage or even failure.

We await your direction to proceed with placing the generator canopy into position.

Please revert to the undersigned with any queries.

Yours faithfully

WAYNE LEHMKUHL
On behalf of
IBUYA CONSULTING ENGINEERS
Proposed generator position layout
Generator specification



REV	DATE	BY	DESCRIPTION	SIGN	SCALE	TITLE:
0	12/08/13	CO	Amafa requirements added	SN	1/150	Business Express Lounge and Shosholoza Meyl relocation for PRASA at PMB Station Small Power layout (Part)
BLOCK D 56 ESSEX TERRACE WINDSORCK 3631 TEL: +27 (031) 2667332 FAX: +27 (031) 2667340 Email: info@ibua.co.za						
IBU A Consulting Engineers			POWERING DEVELOPMENT			
DESIGNED	DATE	SCALE	DRAWN	TITLE:		
WI	July 2013	1/150	CO	Business Express Lounge and Shosholoza Meyl relocation for PRASA at PMB Station Small Power layout (Part)		
DRAWING No.				REV.		
200				C		
SHEET:				CHKC:		
1				SN		
COPYRIGHT PROTECTED. ALL RIGHTS RESERVED AGAINST REPRODUCTION OR COPYING IN ANY MANNER WHATSOEVER.						
FILE NAME: 12017_200						



ample power
SUSTAINABLE ENERGY MANAGEMENT

Customer Details

Date : 21/08/2013
Customer : Jireh Electrical
Site : PRASA BUSINESS CENTRE - PMB
Tel : -
Name : Kiren

**We thank you for your enquiry, please see detail below for your consideration.
All prices are exclusive of VAT.**

50KVA PRIME POWERED FAW GENERATOR PROPOSAL

This Quotation includes:

- 1) **Engine:** 50kVA Prime Powered FAW in line 4 cylinder turbo charged tier 2 diesel engine fitted with a water jacket heater.
- 2) **Base:** Steel fabricated simplex base frame powder coated and fitted with anti-vibration mountings.
- 3) **Batteries:** Royal maintenance free 12V 105A/H (X1).
- 4) **Exhaust:** Stainless Steel Residential grade Silencer.
- 5) **Fuel Tank:** 12 Hour Fuel tank @ full load situated in the base frame complete with a wall mounted electrical fuel transfer pump for easy refuelling.
- 6) **Canopy:** Mild Steel Sound Attenuated Canopy Powder Coated Ocean Grey.
(All hinges, nuts and bolts are stainless steel)
- 7) **Control Panel:** Smartgen 7120 AMF Control Panel with the following Functions:
 - Accurate metering of Mains and Generator Voltage, Current and Frequency.
 - Running hours & all engine protection including (Low oil, high temp, over speed, under speed, over Voltage, under Voltage, low fuel level, battery charge failure.
 - Alternator Breaker
 - Motorised changeover switch
- 8) **12 Months/1000 Hours Guarantee:** Included

Specifications

Model:	4DX23-65D (48kW) @ 1500 RPM
Engine:	FAW in line 4 cylinder Turbo Charged Diesel
Alternator:	Marelli/Mecc-Alte/Engga
Nominal speed (r.p.m):	1 500
Generator prime power (KVA):	50kVA (Standby Power 55kVA)
Ampere (A):	72 AMPS per Phase continuous Current
Volts (V):	400 Volts, 50Hz, @ 0.8 Power Factor
Dimensions (L x W x Hmm):	2300mm x 1000mm x 1500mm
Weight (KG):	800 KG
Controller:	Smartgen 7120 AMF Controller
Fuel consumption at 75% load	9 L/h
Fuel tank:	12 hour base tank

Pricing Excluding VAT

50kVA FAW Generator with AMF Control Panel	
Sound Attenuated Canopy Powder Coated	
Delivery to PMB (major rigging excluded)	

TOTAL PRICE EX VAT	
First Fill Of Diesel – per litre	

Electrical Installation & Commissioning

Electrical installation is excluded unless requested.

Onsite Commissioning is included.

Documentation

- Electrical drawings, operating instructions and service schedule.
- One engine manual.
- One alternator manual.
- Load Test Certificate.

Delivery

3 – 4 Weeks from date of order and deposit.

Payment

50% deposit on placement of order and balance upon successful FAT.

Warranty

The generator is warranted for a period of 12 months or 1000 hours from date of delivery, against faulty workmanship, design and material.

For any claim under this warranty to be considered valid, the equipment should at all times be operated in accordance with manufacturer's instruction: no additives, repairs or adjustments may be made to the equipment without the authorization of the manufacturer. We will not hold ourselves responsible for any consequential damage caused directly or indirectly by any possible failure or defect with the equipment. The generator remains property of Ample Power until paid in full.

After Sales

Parts: A comprehensive range of genuine spare parts is stocked and available from our Durban office and from local parts dealers all around SA.

Service: A dedicated team of specialist servicemen are based throughout our network to ensure a swift reaction to any calls for after sales service.

Product Support: A team of Product Support servicemen are employed by us to maintain strong links with the end user of the equipment by providing condition reports when required.

Validity: This quotation is valid for a period of 21 days.

We trust that our offer will meet with your favourable consideration. Should you require any further information please feel free to contact us.

Yours Faithfully
James Siedle
AMPLE POWER