







**EMANSOMINI  
PEDESTRAIN  
BRIDGE  
BASIC ASSESSMENT  
(ETHEKWINI MUNICIPALITY)  
DESKTOP STUDY:  
SENSITIVITY MAP**



**Legend:**

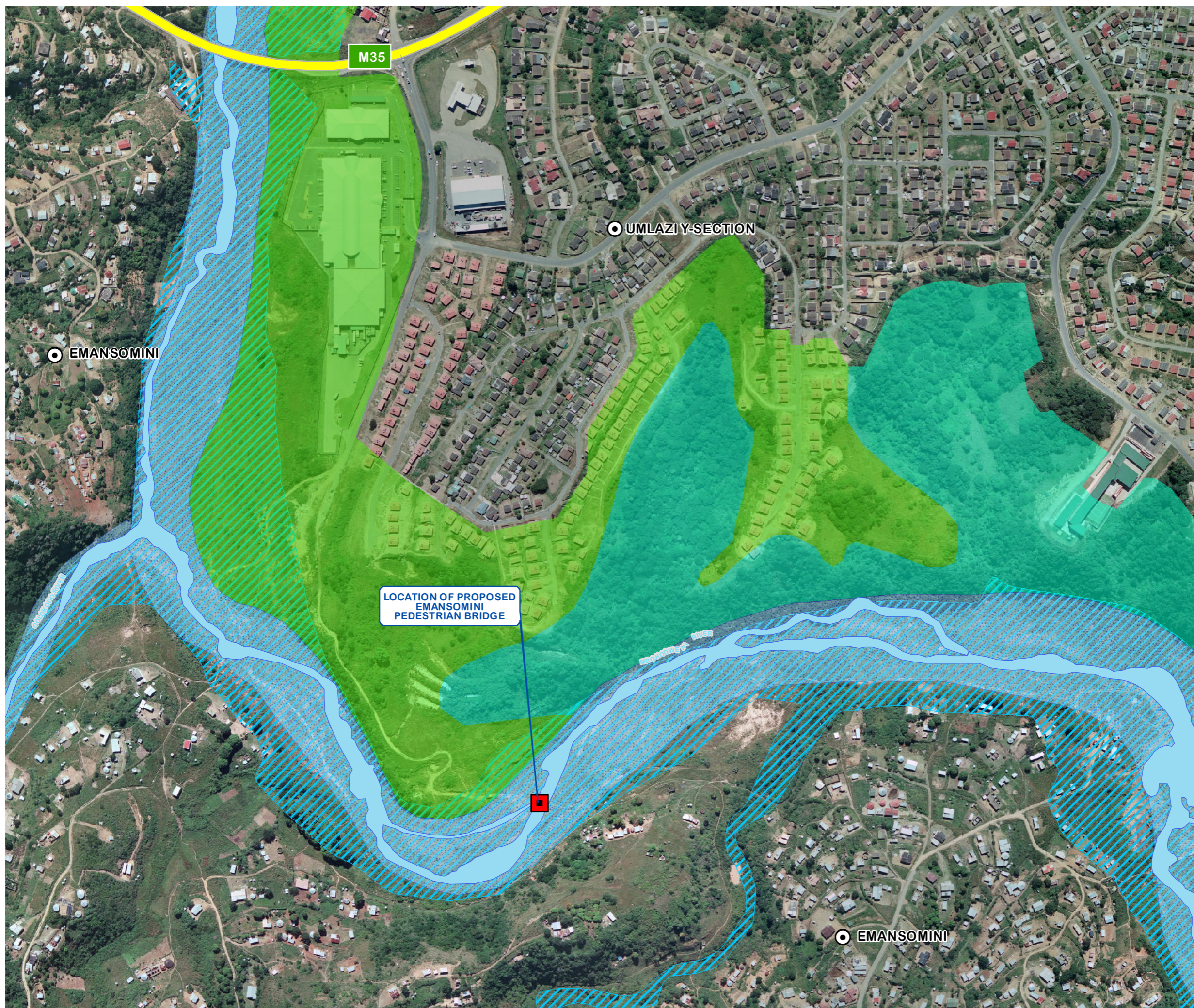
-  Main Roads
-  Emansomini Pedestrian Bridge
-  Main Settlements

**Surface Water/Hydrology**

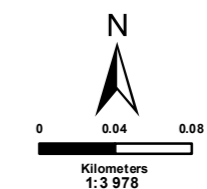
-  River/Watercourse
-  1:100 Year Floodline
-  Wetland

**D'Moss Classification**

-  Alien Thicket
-  Alien Woodland



SOURCE:  
SURVEYOR GENERAL  
ETHEKWINI MUNICIPALITY  
ENPAT  
D'MOSS



**SIVEST**  
ENVIRONMENTAL DIVISION  
51 WESSELS ROAD  
RIVONIA, 2128  
JOHANNESBURG  
SOUTH AFRICA  
Phone: +27 11 798 0600  
Fax: +27 11 803 7272  
e-mail: info@sivest.co.za

Project No	Map Ref No	Prepared By	Date
12527	12527/T2/02	LMN	04/07/2014

"COPYRIGHT IS VESTED IN SIVEST IN TERMS OF THE COPYRIGHT ACT (ACT 98 OF 1978) AND NO USE OR REPRODUCTION OR DUPLICATION THEREOF MAY OCCUR WITHOUT THE WRITTEN CONSENT OF THE AUTHOR"

THIS MAP HAS BEEN PREPARED UNDER THE CONTROLS ESTABLISHED BY THE SIVEST QUALITY MANAGEMENT SYSTEM AND MEETS THE REQUIREMENTS OF THE SETA QUALITY GRADING SYSTEM THAT IS ISO COMPLIANT