







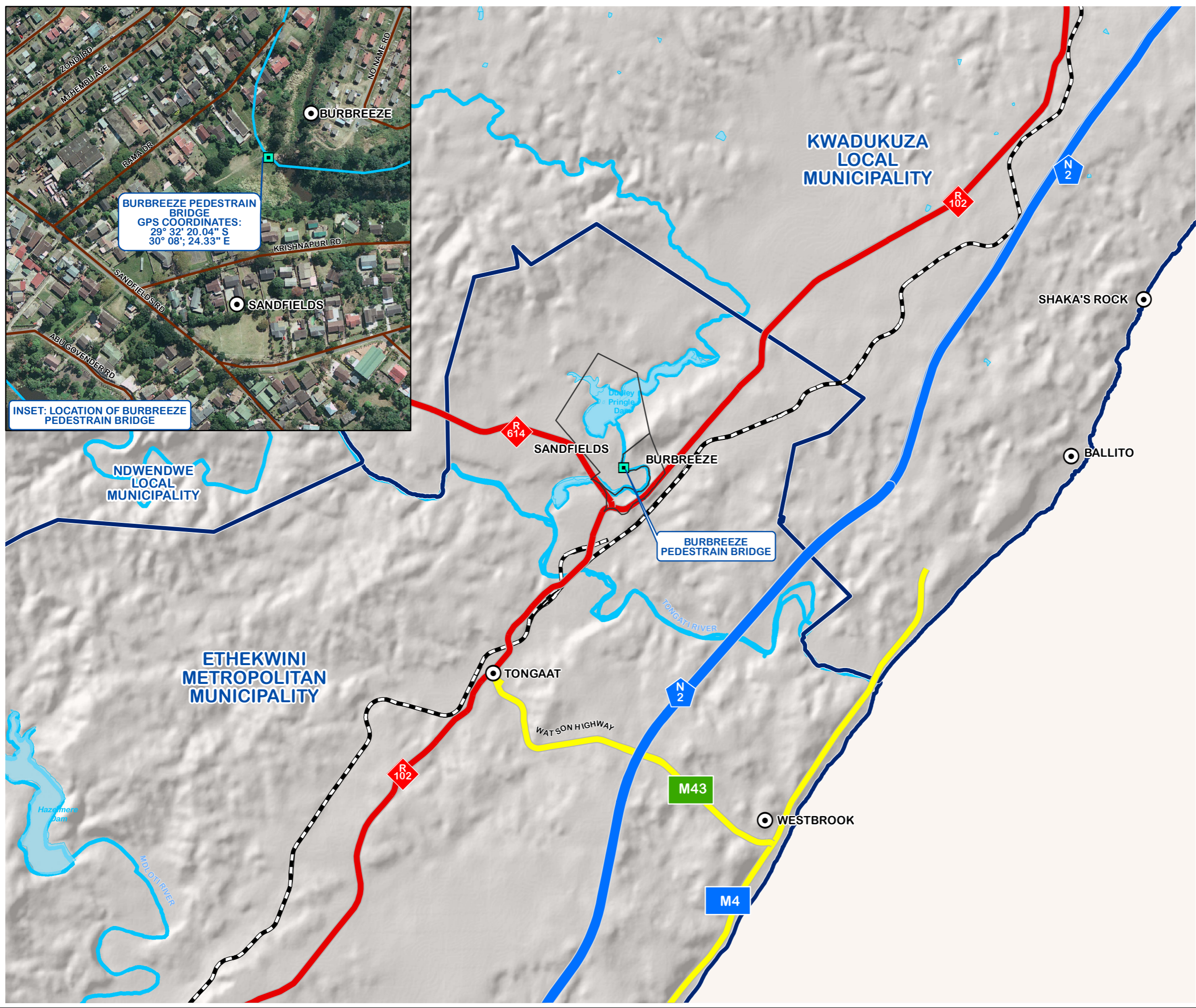


BURBREEZE PEDESTRAIN BRIDGE BASIC ASSESSMENT

TONGAAT
(ETHEKWINI MUNICIPALITY)

1:50 000 LOCALITY

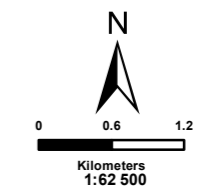
- Legend:**
-  Local Municipal Boundaries
 -  National Routes
 -  Main Arterial Routes
 -  Railways
 -  Rivers
 -  Burbreeze Pedestrian Bridge
 -  Main Suburbs
 -  Sandfields/Burbreeze Boundaries



BURBREEZE PEDESTRAIN BRIDGE
GPS COORDINATES:
29° 32' 20.04" S
30° 08' 24.33" E

INSET: LOCATION OF BURBREEZE PEDESTRAIN BRIDGE

SOURCE:
SURVEYOR GENERAL
ETHEKWINI MUNICIPALITY
ENPAT



SIVEST

ENVIRONMENTAL DIVISION
51 WESSELS ROAD
RIVONIA, 2128
JOHANNESBURG
SOUTH AFRICA

Phone: +27 11 798 0600
Fax: +27 11 803 7272
e-mail: info@sivest.co.za

Project No	Map Ref No	Prepared By	Date
12622	12622/T2/01	LMN	11/04/2014

"COPYRIGHT IS VESTED IN SIVEST IN TERMS OF THE COPYRIGHT ACT (ACT 98 OF 1978) AND NO USE OR REPRODUCTION OR DUPLICATION THEREOF MAY OCCUR WITHOUT THE WRITTEN CONSENT OF THE AUTHOR"

THIS MAP HAS BEEN PREPARED UNDER THE CONTROLS ESTABLISHED BY THE SIVEST QUALITY MANAGEMENT SYSTEM AND MEETS THE REQUIREMENTS OF THE SETA QUALITY GRADING SYSTEM THAT IS ISO COMPLIANT