



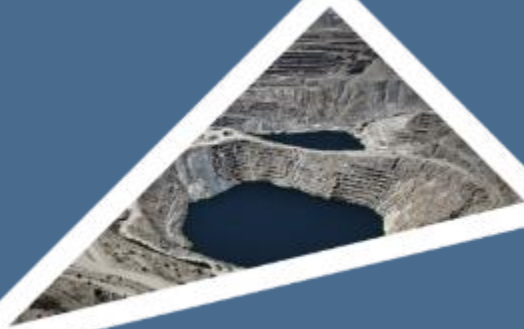
ENVIRONMENTAL
IMPACT
MANAGEMENT
SERVICES

T 011 789 7170 E info@eims.co.za W www.eims.co.za

EXTERNAL FINAL NEMA EA AND EMPR AUDIT REPORT 2022

ENEL GREEN POWER – SOETWATER WIND ENERGY FACILITY

DEA REF: 12/12/20/2370/2





DOCUMENT DETAILS

EIMS REFERENCE: 1322
DOCUMENT TITLE: EXTERNAL FINAL NEMA EA AND EMPR AUDIT REPORT

DOCUMENT CONTROL

	NAME	SIGNATURE	DATE
COMPILED:	Sikhumbuzo Mahlangu	Sent Electronically	2022/12/20
CHECKED:	Bongani Khupe	Sent Electronically	2022/12/20
AUTHORIZED:	Liam Whitlow	Sent Electronically	2022/12/20

REVISION AND AMENDMENTS

REVISION DATE:	REV #	DESCRIPTION
2022/12/20	ORIGINAL DOCUMENT	Draft Audit Report
2023/01/25	REVISION 1	Final Audit Report



Table of Contents

Executive Summary.....	3
1 Introduction	7
1.1 Details of the Applicant	7
1.2 Brief Project Description	8
2 Details of the Auditor.....	8
2.1 Expertise of the Auditor	8
2.2 Declaration of Independence	9
3 Scope, Purpose and Objective of the Audit	9
3.1 Purpose and Scope of the Audit.....	9
3.2 Objectives of the Audit.....	9
4 Audit Methodology	10
4.1 Procedure for the Audit.....	10
4.2 Evaluation Criteria Used During the Audit	10
4.3 Consultation Process Undertaken	11
5 Results of the Assessment	11
5.1 Compliance Summary.....	11
5.1.1 Compliance with the EA	11
5.1.2 Compliance with the EMPr.....	12
5.2 Compliance Evaluation	13
5.2.1 Compliance Evaluation of The EA	14
5.2.2 Compliance Evaluation of The EMPr.....	38
5.3 Findings of the Audit	75
5.3.1 Findings from The Compliance Evaluation Of The EA AND EMPr	75
5.4 Continued Adequacy of the EMPr.....	80
5.4.1 New Impacts Identified	80
5.4.2 Effectiveness of the EMPr	80
5.4.3 Shortcomings in the EMPr.....	80
6 Photographic Record.....	81
7 Conclusion.....	86
8 Assumptions, Limitations and Gaps in Knowledge	86

List of Figures

Figure 1: Summary of EA compliance statistics.....	12
--	----



Figure 2: Summary of EMPr compliance statistics.....	13
Figure 3: View of rehabilitated area signage along the access road to the main camp.	81
Figure 4: View of the access road to the main camp.....	81
Figure 5: View of some of the Soetwater Wind Farm turbines.	82
Figure 6: View of office containers remaining at the main camp.....	82
Figure 7: Western view of the main camp.....	83
Figure 8: View of topsoil windrowed along the western boundary of the main camp.	83
Figure 9: View of some of the materials that remain at the main camp.	84
Figure 10: View of the materials remaining at the batch plant.....	84
Figure 11: Aircraft Detection Lighting System used on the wind turbines.	85
Figure 12: View of the crushing area along road 6.	Error! Bookmark not defined.
Figure 13: View of some materials that remain at the satellite camp.....	85

List of Tables

Table 1: Summary of findings of the EA and EMPr.....	4
Table 2: Details of the applicant.....	7
Table 3: General Environmental Legislation.....	10
Table 4: Compliance Rating Protocol.....	11
Table 5: Compliance evaluation of EA conditions.....	14
Table 6: Compliance evaluation of EMPr conditions.....	38
Table 7: Table of findings of the audit.....	75



EXECUTIVE SUMMARY

Soetwater Wind Farm (Pty) Ltd (Soetwater) was granted an Environmental Authorisation (EA) (DEA Ref. no: 12/12/20/2370/2) for the proposed 140 MW Soetwater Wind Energy Facility (Phase 2) on portions 1, 2, 4 and the remainder of the farm Orange Fontein 203, the farm Annex Orange Fontein 185, the farm Leeuwe Hoek 183 and the farm Zwanepoel Hoek 184 within the Karoo Hoogland Local Municipality, Northern Cape on the 12th of August 2014. Soetwater appointed Environmental Impact Management Services (Pty) Ltd (EIMS) to conduct an external final audit of the EA and accompanying Environmental Management Programme (EMPr), in compliance with conditions 29 and 30 of the EA as well as section 6.5.3 of the approved EMPr.

Additional to the EA and EMPr requirements, scheduled Environmental Compliance Audits are required to be undertaken in terms of Regulation 34 of the National Environmental Management Act, Act 107 of 1998 (NEMA) Environmental Impact Assessment (EIA) Regulations, 2014. Regulation 34 states:

- 1) *“The holder of an environmental authorisation must, for the period during which the environmental authorisation, EMPr, and the closure plan in the case of a closure activity, remain valid-*
 - (a) *Ensure that the compliance with the conditions of the environmental authorisation, the EMPr, and the closure plan in the case of a closure activity, is audited; and*
 - (b) *Submit an environmental audit report to the relevant competent authority.*
- 2) *The environmental audit report contemplated in sub-regulation (1) must-*
 - (a) *be prepared by an independent person with the relevant environmental auditing expertise;*
 - (b) *provide verifiable findings, in a structured and systematic manner, on*
 - i) *The level of performance against and compliance of an organisation or project with the provisions of the requisite environmental authorisation, EMPr and the closure plan in the case of a closure activity; and*
 - ii) *The ability of the measures contained in the EMPr and the closure plan to sufficiently provide for the avoidance, management and mitigation of environmental impacts associated with the undertaking of the activity;*
 - (c) *Contain the information set out in Appendix 7; and*
 - (d) *Be conducted and submitted to the competent authority at intervals as indicated in the environmental authorisation”.*

This Audit represents the Final Environmental Audit of the EA and EMPr in line with the requirements of NEMA, the EA and EMPr.

The scope of the audit is to assess compliance with the conditions of the EA and EMPr as well as to confirm the continued adequacy of the EMPr. The purpose of the audit is to ensure compliance with the requirements of the EA and EMPr. The objectives of the audit are to determine:

- The level of performance against, and compliance of the organisation or project with, the provisions of the EA and EMPr; and
- The ability of the measures contained in the EMPr, to sufficiently provide for the avoidance, management and mitigation of environmental impacts associated with the undertaking of the activity.

An audit checklist was prepared to evaluate the compliance with each condition contained in the EA and EMPr. Following the initial checklist preparation, a site visit was undertaken on the 24th of November 2022. The findings of this audit are based on visual inspection of rehabilitated areas, interviews, as well as documentation reviewed.

Compliance with the requirements of the EA and EMPr was evaluated using pre-determined scoring criteria as described in Section 4.2. The results of the evaluation are provided in Section 5.2 and the findings are described in Section 5.3. Each condition in the EA and EMPr was weighted equally in order to determine a compliance



score. Utilising this scoring system, a compliance score of 64,29% was obtained for EA and 90,00% obtained for the EMPr during this audit. The key findings of the audit are provided in Table 1.

Table 1: Summary of findings of the EA and EMPr.

Finding #	EA / EMPr Ref #	Requirement Description	Findings and Recommendations
Environmental Authorization (EA)			
1	10 & 11	<p>The holder of the authorisation must notify every registered interested and affected party, in writing and within 12 (twelve) calendar days of the date of this environmental authorisation, of the decision to authorise the activity.</p> <p>"The notification referred to must -</p> <p>11.1. specify the date on which the authorisation was issued;</p> <p>11.2. inform the interested and affected party of the appeal procedure provided for in Chapter 7 of the Environmental Impact Assessment Regulations, 2010;</p> <p>11.3. advise the interested and affected party that a copy of the authorisation will be furnished on request; and,</p> <p>11.4. give the reasons of the competent authority for the decision"</p>	<p>Proof of notifying interested and affected parties of the decision within 14 days was not available at the time of the audit.</p>
2	12	<p>The holder of the authorisation must publish a notice -</p> <p>12.1. informing interested and affected parties of the decision;</p> <p>12.2. informing interested and affected parties where the decision can be accessed; and,</p> <p>12.3. drawing the attention of interested and affected parties to the fact that an appeal may be lodged against this decision in the newspaper(s) contemplated and used in terms of regulation 54(2)(c) and (d) and which newspaper was used for the placing of advertisements as part of the public participation process.</p>	<p>Proof of publishing a notice informing interested and affected parties of the decision; where it can be accessed; and drawing the attention of I&APs to the fact that an appeal may be lodged against the EA decision in terms of the National Appeal Regulations, 2014 was not available at the time of the audit.</p>
3	27	<p>The holder of this authorisation must keep all records pertaining to monitoring and auditing on site and make it available for inspection to any relevant and competent authority in respect of this development</p>	<p>It was reported that all monitoring and auditing records are kept on site on an external hard drive. This hard drive was not available on site during the audit.</p>



Finding #	EA / EMPr Ref #	Requirement Description	Findings and Recommendations
4	40	Avifauna and bats-A bird and bat monitoring programme must be implemented to document the effect of the operation of the energy facility on avifauna and bats. Active breeding nests in the immediate surroundings must be monitored during the construction phase and further mitigation measures must be discussed with the avifaunal specialist and implemented if necessary.	It was reported that the bird and bat monitoring programme has not been implemented yet. Therefore, no reports have been submitted to the relevant provincial environmental department, BirdLife South Africa, the Endangered Wildlife Trust (EWT) and the DFFE. It is recommended that this monitoring be implemented as a matter of urgency.
43	Post-construction avifauna and bat monitoring by an independent monitor should take place for at least two years after operation has commenced. It is recommended that this is done in accordance with BirdLife South Africa/Endangered Wildlife Trust: Best practice guidelines for avian monitoring and impact mitigation at proposed wind energy development sites in Southern Africa.		
44	Reports regarding bird monitoring must be submitted to the relevant provincial environmental department, BirdLife South Africa, the Endangered Wildlife Trust (EWT) and this Department on a quarterly basis. The report will assist all stakeholders in identifying potential and additional mitigation measures and to establish protocols for a bird monitoring programme for wind energy development in the country.		
5	53	All areas of disturbed soil must be reclaimed using only indigenous grass and shrubs. Reclamation activities shall be undertaken according to the rehabilitation plan to be included in the final EMPr	Reclamation activities were undertaken according to the rehabilitation plan, however, some disturbed areas such as the camps had not been fully rehabilitated at the time of the audit.
6	54	Topsoil from all excavations and construction activities must be salvaged and reapplied during reclamation.	Topsoil was observed windrowed along the western side of the main camp.



Finding #	EA / EMPr Ref #	Requirement Description	Findings and Recommendations
7	65	Disturbed areas must be rehabilitated as soon as possible after construction with locally indigenous plants to enhance the conservation of existing natural vegetation on site.	Rehabilitation activities were undertaken according to the rehabilitation plan, however, some disturbed areas such as the camps had not been fully rehabilitated at the time of the audit. Furthermore, topsoil was observed windrowed along the western side of the main camp.
8	132	A copy of this authorisation and the approved EMPr must be kept at the property where the activity will be undertaken. The authorisation and approved EMPr must be produced to any authorised official of the Department who requests to see it and must be made available for inspection by any employee or agent of the holder of the authorisation who works or undertakes work at the property.	It was reported that all monitoring and auditing records are kept on site on an external hard drive. This hard drive was not on site during the audit. Furthermore, no proof that documents were made available on the EGP website as required by the EA could be provided during the audit.
Environmental Management Programme (EMPr)			
1	7.1	All temporary facilities, equipment and waste materials must be removed from site and appropriately disposed of.	Not all materials had been removed from site at the time of the audit. Some materials still remained at the contractor's main and satellite camps, in some instances these included waste materials, old bunds, hydrocarbon spillages and topsoil.
2		On-going alien plant monitoring (as per the Alien invasive Management Plan- refer to Appendix C) and removal should be undertaken on all areas of natural vegetation on an annual basis.	Invasive alien Plant Management Plan is in place however monitoring programme is not yet established

Based on the audit, no shortcomings were noted regarding the adequacy and effectiveness of the EMPr to manage and mitigate the impacts of this project.



1 INTRODUCTION

Soetwater Wind Farm (Pty) Ltd (Soetwater) was granted an EA (DEA Ref. no: 12/12/20/2370/2) for the proposed 140 MW Soetwater Wind Energy Facility (Phase 2) on portions 1, 2, 4 and the remainder of the farm Orange Fontein 203, the farm Annex Orange Fontein 185, the farm Leeuwe Hoek 183 and the farm Zwanepoel Hoek 184 within the Karoo Hoogland Local Municipality, Northern Cape on the 12th of August 2014. Soetwater appointed Environmental Impact Management Services (Pty) Ltd (EIMS) to conduct an external final environmental audit of the issued EA (DEA Ref. no: 12/12/20/2370/1) and approved Environmental Management Programme (EMPr), in compliance with conditions 22, 23, 24 and 25 of the EA as well as section 6.5.3 of the approved EMPr.

Additional to the EA and EMPr requirements, scheduled Environmental Compliance Audits are required to be undertaken in terms of Regulation 34 of the National Environmental Management Act, Act 107 of 1998 (NEMA) Environmental Impact Assessment (EIA) Regulations, 2014. Regulation 34 states:

- 1) *“The holder of an environmental authorisation must, for the period during which the environmental authorisation, EMPr, and the closure plan in the case of a closure activity, remain valid-*
 - (c) *Ensure that the compliance with the conditions of the environmental authorisation, the EMPr, and the closure plan in the case of a closure activity, is audited; and*
 - (d) *Submit an environmental audit report to the relevant competent authority.*
- 2) *The environmental audit report contemplated in sub-regulation (1) must-*
 - (e) *be prepared by an independent person with the relevant environmental auditing expertise;*
 - (f) *provide verifiable findings, in a structured and systematic manner, on*
 - i) *The level of performance against and compliance of an organisation or project with the provisions of the requisite environmental authorisation, EMPr and the closure plan in the case of a closure activity; and*
 - ii) *The ability of the measures contained in the EMPr and the closure plan to sufficiently provide for the avoidance, management and mitigation of environmental impacts associated with the undertaking of the activity;*
 - (g) *Contain the information set out in Appendix 7; and*
 - (h) *Be conducted and submitted to the competent authority at intervals as indicated in the environmental authorisation”.*

This Audit represents the Final Environmental Audit of the EA and EMPr in line with the requirements of NEMA, the EA and EMPr.

1.1 DETAILS OF THE APPLICANT

Details of the Applicant are summarised in Table 2 below.

Table 2: Details of the applicant

Company	Soetwater Wind Farm (Pty) Ltd
Postal address	P.O. Box 651286
	Benmore
	2010
Operations physical address	Soetwater Wind Farm (Pty) Ltd,



	Sutherland, 6920
Head Office Telephone number	+27 10 344 0220
Head Office Fax Number	N/A

1.2 BRIEF PROJECT DESCRIPTION

Soetwater Wind Facility site is located within the Karoo Hoogland Local Municipality (approximately 30 km south of Sutherland in the Northern Cape Province). The facility will be powered by wind, no other fuels will be used as a generating fuel during the operational phase of the project. The Soetwater Wind Facility is proposed on the following farm portions (which collectively occupies land of approximately 136.2 km² in extent):

- Farm Annex Orange Fontein 185;
- Farm Leeuwe Hoek 183;
- Farm Zwanepoels Hoek 184;
- Portion 1, 2, 4 and the remainder of farm Orange Fontein 203;
- Farm De Hoop 202; and
- Portion 1 of the Farm Rheeboeke Fontein 209.

The project will include the following infrastructure:

- 35 wind turbines appropriately spaced to make use of the wind resource on the site. The facility would be operated as a single facility with each turbine being capable of producing 4.2MW.
- Each wind turbine will consist of a Tubular Steel foundation (approximately 50m x 60m - circular base of approximately 25m diameter), a steel tower, a hub (82m above ground level) and three blades with a rotor diameter of 136m.
- Permanent laydown/ hardstand areas (approximately 50m x 60m).
- Temporary infrastructure, including a site camp, laydown areas and a batching plant.
- Cabling (medium voltage) between wind turbines and other relevant components, laid approximately 1 m underground where underground cabling is feasible. In as far as possible, cabling will follow the internal access roads.
- Internal roads (approximately 8 m in width) linking the wind turbines and other infrastructure on the site. Existing farm roads will be used as far as possible. However, the dispersed distribution pattern of wind turbines and the vast areas of the site which are not currently accessible will necessitate the construction of ~30 km of new access roads.
- Operations and services workshop area / office building for control, maintenance and storage (approximately 2000m²).
- Guard house for access security of 50m².

2 DETAILS OF THE AUDITOR

The audit was undertaken by Mr Sikhumbuzo Mahlangu from EIMS and the details of the auditor are described below.

2.1 EXPERTISE OF THE AUDITOR

Sikhumbuzo holds a BSc. Master's degree in Zoology (Aquatic Health) from the University of Johannesburg. He is an aquatic and research scientist with over 2 years' experience, and over 10 years' experience as an environmental scientist. He has also completed an advanced course on Tools for Wetland Assessments. His expertise lies mainly in environmental management, auditing, monitoring, surface and ground water quality assessments, biomonitoring, wetland assessments and reporting.



Sikhumbuzo has played a vital role in providing advice on general environmental management issues on site to projects such as Transnet New Multi Product Pipeline (NMPP), Mokolo Crocodile Water Augmentation Project Phase 1 (MCWAP1), Eskom Grootvlei Power Station and Eskom Kusile Power Station Construction Project among others. He has also been involved on numerous projects in the energy, mining and infrastructure development sectors as well as management and preparation of documentation required for Integrated Water Use Licence Applications (IWULA). He has also played a role in assisting and advising various contractors on the practical implementation of Water Use Licences, Environmental Management Plans and conditions of Environmental Authorisations.

2.2 DECLARATION OF INDEPENDENCE

I, Sikhumbuzo Mahlangu declare that –

- *I act as the independent environmental auditor;*
- *I will perform the work relating to the audit in an objective manner, even if this results in views and findings that are not favourable to the Client;*
- *I declare that there are no circumstances that may compromise my objectivity in performing such work;*
- *I have expertise in conducting environmental audits, including knowledge of the environmental Acts, regulations and any guidelines that have relevance to the audited operations;*
- *I will comply with the relevant Acts, regulations and all other applicable legislation;*
- *I have no, and will not engage in, conflicting interests in the audit process;*
- *I realise that a false declaration is an offence in terms of regulation 48 and is punishable in terms of section 24F of the NEMA.*

I do not have and will not have any vested interest (either business, financial, personal or other) in the audit other than remuneration for work performed.

3 SCOPE, PURPOSE AND OBJECTIVE OF THE AUDIT

3.1 PURPOSE AND SCOPE OF THE AUDIT

The purpose of the audit is to ensure compliance with the requirement of the EA and EMPr as well as the NEMA EIA Regulation 34 to undertake scheduled compliance audits of the EA and EMPr.

The environmental audit seeks to cover the following scope of work or part thereof:

- The extent of EA / EMPr compliance;
- The consistency of site activities with activities provided for in the EA and EMPr;
- The accuracy and effectiveness of data reporting processes to ensure the integrity of the reported data;
- The effectiveness of incident identification, classification, recording, reporting and management including follow-up processes;
- To identify opportunities for improvement and make recommendations

3.2 OBJECTIVES OF THE AUDIT

In terms of Regulation 34 of the 2014 EIA Regulations (Government Notice R. 982), objectives of the environmental audit report are;

- Report on:
 - The level of compliance with the conditions of the environmental authorisation and the EMPr;
 - and



- The extent to which the avoidance, management and mitigation measures provided for in the EMPr achieve the objectives and outcomes of the EMPr.
- Identify and assess any new impacts and risks as a result of undertaking the activity;
- Evaluate the effectiveness of the EMPr;
- Identify shortcomings in the EMPr;
- Identify the need for any changes to the avoidance, management and mitigation measures provided for in the EMPr

4 AUDIT METHODOLOGY

4.1 PROCEDURE FOR THE AUDIT

Initial documentation was obtained and reviewed in preparation for the audit. A checklist was prepared based on the requirements of the EA and EMPr. Following the initial checklist preparation and documentation review, a site visit was undertaken on 24th of November 2022 to determine compliance with the EA and EMPr. Compliance with the requirements of the EA and EMPr was evaluated using the pre-determined scoring criteria as described in Section 4.2. The results of the evaluation are provided in Section 5.2 and the findings are described in Section 5.3 of this report.

The report provides recommendations for improvement based on general findings and site observations. Findings from the audit and site inspection that did not relate to a particular EA and EMPr condition did not contribute to the audit score. However, where deficiencies have been identified that do not necessarily correspond to EMPr conditions, these findings have been used to provide recommendations for improvement.

Various documentation and records were required during the audit to confirm compliance with the EA and EMPr conditions. Where possible, documentation and records were made available electronically for review prior to the site visit. The rest of the information required for verification of compliance was provided following the site inspection. No physical testing or chemical analysis was performed during the assessment and information provided by employees was verified by inspection only.

There is wide variety of South African environmental legislation, and the Soetwater Wind farm is required to comply with all relevant legislation in their operations. For the purposes of this report, some of the main environmental legislation applicable to the Soetwater Wind farm, and considered during the audit, has been listed in Table 3 below.

Table 3: General Environmental Legislation.

Title of legislation, policy or guideline:	Administering authority:
National Water Act (Act No. 36 of 1998)	Department of Water and Sanitation
National Environmental Management Act (Act No. 107 of 1998) - and associated Regulations	National Department of Environment, Forestry and Fisheries

Whilst consideration was given to the legislation listed in the table above, a full comprehensive legal compliance audit is beyond the scope of this audit. Where reference is made to legislation or other statutory provisions in this report, the original legislation or other statutory provisions will always take precedence and the reader is directed to revert to the original legislation or statutes.

4.2 EVALUATION CRITERIA USED DURING THE AUDIT

The scoring criteria used during the audit are as follows:



Table 4: Compliance Rating Protocol.

Compliance Rating	Score	Description
Full-Compliance	4	Indicating that the condition was fully complied with
Partial-Compliance	2	Indicating that the condition has not been fully complied with and that additional measures are required to obtain full compliance.
Non-Compliance	0	Indicating that the condition has not been complied with
Not Applicable	N/A	Indicating that the condition is not currently applicable. Not applicable conditions were removed from the total number of conditions from which the compliance score was calculated.
Not Verified	-	Indicating that the condition was not verified for various reasons. Non-verifiable conditions were removed from the total number of conditions from which the compliance score was calculated

Certain conditions have been included in the EA and EMPr for information purposes and are either not possible, or within the scope of this audit, to verify compliance with these conditions. These conditions do not contribute to the audit scoring and as such have been marked as not-applicable (N/A). It is important however to note that despite certain conditions not being scored in the audit checklist, these conditions remain binding on the applicant and must be implemented and complied with by Soetwater Wind farm as and when relevant to ensure compliance.

According to the scoring criteria, findings have been given a straight compliance score and a weighted compliance score. The straight compliance score is calculated based on the compliance with the relevant conditions (i.e. yes or no). The weighted compliance score is calculated by using the compliance rating protocol (0, 2, 4) and scoring the individual conditions and calculating the percentage compliance.

4.3 CONSULTATION PROCESS UNDERTAKEN

The findings of this audit are based on visual inspection of the construction areas, interviews, as well as documentation reviewed. No physical testing or chemical analysis was performed during the assessment and information provided by employees was verified by inspection and review only. The personnel that were interviewed and assisted with the audit includes, inter alia:

- Pamela Mabece (Environmental Officer – Enel Green Power); and
- Sandile Mazibuko (Site Manager – Enel Green Power).

5 RESULTS OF THE ASSESSMENT

5.1 COMPLIANCE SUMMARY

5.1.1 COMPLIANCE WITH THE EA

A total of 134 conditions of the EA were identified and evaluated. Of these conditions 105 of these conditions were considered not applicable to the current phase of the project and 29 were deemed applicable. Of the applicable conditions a total of 18 conditions were noted to be fully compliant, 2 partially compliant and 9 conditions were non-compliant. The level of compliance for each condition was calculated according to the methodology described in section 4.2. Utilising this scoring system, a total straight compliance score of 62,07% and a total weighted compliance score of 65,52% was obtained for this audit. A summary of compliance is presented in Figure 1 below.

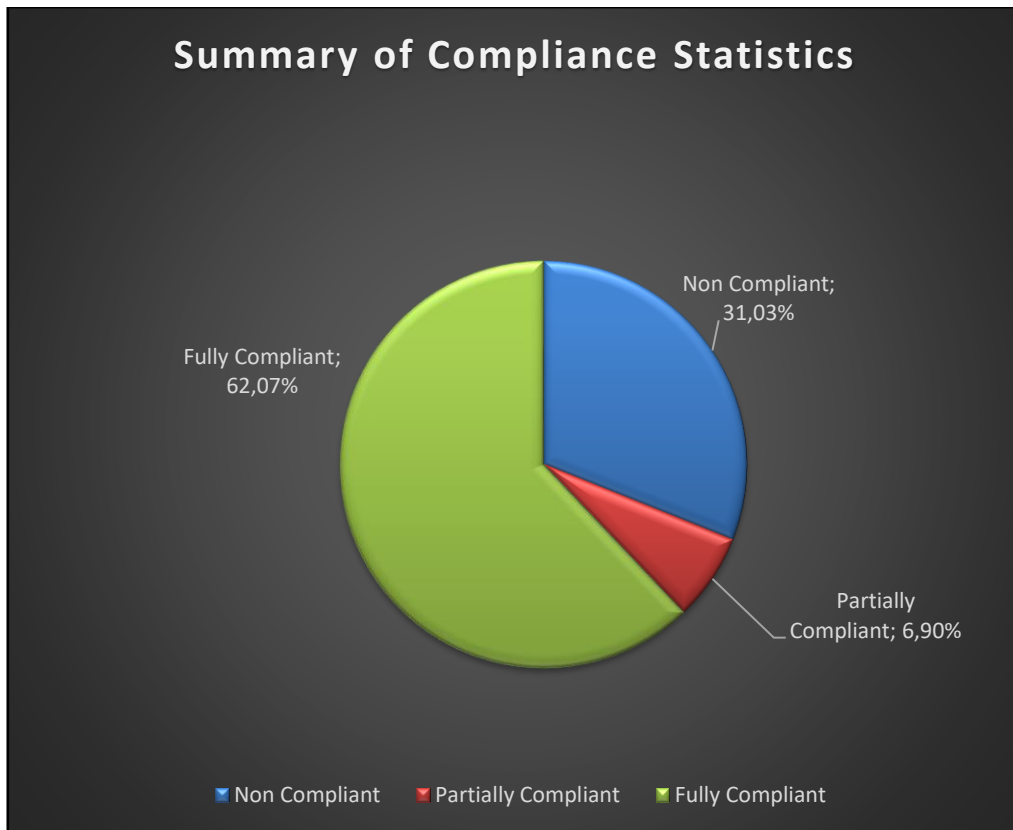


Figure 1: Summary of EA compliance statistics.

5.1.2 COMPLIANCE WITH THE EMPr

A total of 300 commitments of the EMPr were identified and evaluated. Of these conditions 290 of these commitments were considered not applicable to the current phase of the project and 10 were deemed applicable. Of the applicable commitments a total of 8 commitments were noted to be fully compliant and 2 partially compliant. The level of compliance for each commitment was calculated according to the methodology described in section 4.2. Utilising this scoring system, a total straight compliance score of 80,00% and a total weighted compliance score of 90,00% was obtained for this audit. A summary of compliance is presented in Figure 2 below.

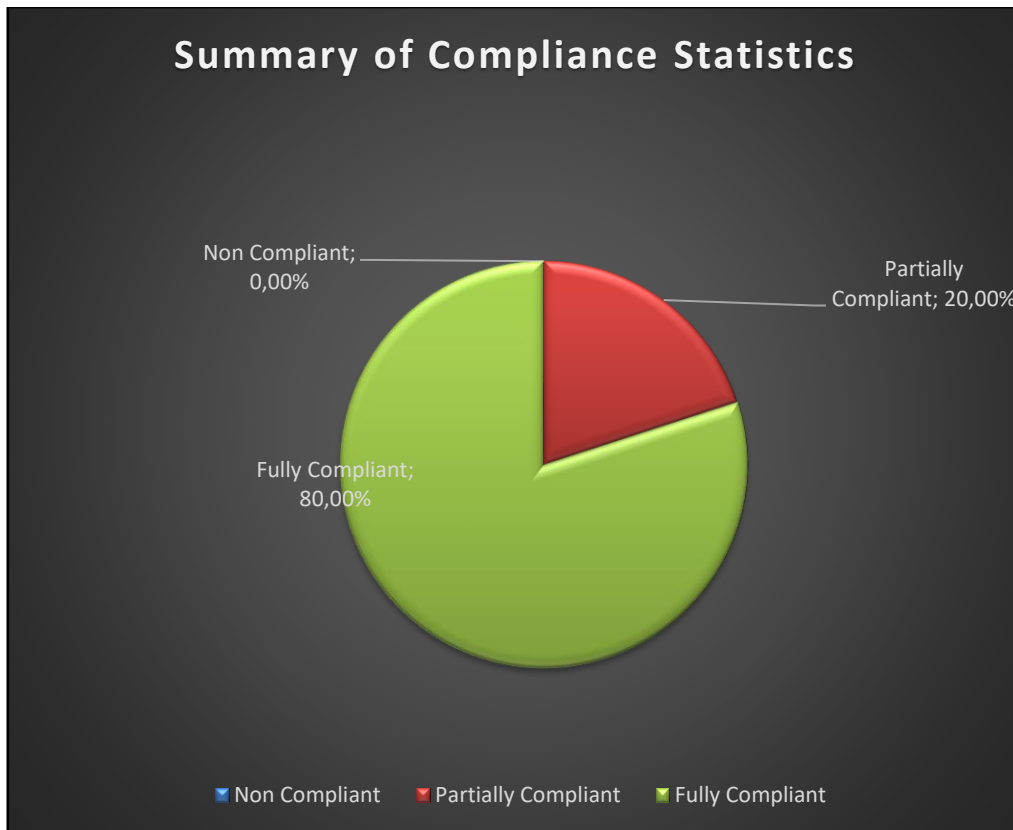


Figure 2: Summary of EMPr compliance statistics

5.2 COMPLIANCE EVALUATION

Sections below present findings from the EA and EMPr compliance evaluation.



5.2.1 COMPLIANCE EVALUATION OF THE EA

A total of 134 conditions were assessed according to the assessment methodology as described in section 4.2 and the findings of the audit are presented in Table 5 below.

Table 5: Compliance evaluation of EA conditions

Ref #	Condition	Compliance Y/N	Compliance Rating	Comments/ Verification
Scope of Authorisation				
1.	The preferred alternative for the construction of the 140MW Soetwater Wind Energy Facility (Phase 2) and its associated infrastructure as described above is hereby approved,	N/A	N/A	Information item, noted by the Applicant.
2.	Authorisation of the activity is subject to the conditions contained in this authorisation, which form part of the environmental authorisation and are binding on the holder of the authorisation.	N/A	N/A	Information item, noted by the Applicant.
3.	The holder of the authorisation is responsible for ensuring compliance with the conditions contained in this environmental authorisation. This includes any person acting on the holder's behalf, including but not limited to, an agent, servant, contractor, sub-contractor, employee, consultant or person rendering a service to the holder of the authorisation.	N/A	N/A	Information item, noted by the Applicant.
4.	The activities authorised may only be carried out at the property as described above.	Y	4	All construction activities were limited to the authorised properties.
5.	Any changes to, or deviations from, the project description set out in this authorisation must be approved, in writing, by the Department before such changes or deviations may be effected. In assessing whether to grant such approval or not, the Department may request such information as it deems necessary to evaluate the significance and impacts of such changes or deviations and it may be necessary for the holder of the authorisation to apply for further authorisation in terms of the regulations.	N/A	N/A	No changes to, or deviations from, the project description set out in this environmental authorisation were noted and/or reported to the auditor during the audit.
6.	This activity must commence within a period of seven (07) years from the date of issue of this authorisation. If commencement of the activity does not occur within that period, the authorisation	N/A	N/A	Activity commenced within the prescribed timeframe.



Ref #	Condition	Compliance Y/N	Compliance Rating	Comments/ Verification
	lapses and a new application for environmental authorisation must be made in order for the activity to be undertaken.			
7.	Commencement with one activity listed in terms of this authorisation constitutes commencement of all authorised activities.	N/A	N/A	Information Item. Noted by the Applicant.
8.	This authorisation does not negate the holder of the authorisations responsibility to comply with any other statutory requirements that may be applicable to the undertaking of the activity.	N/A	N/A	Information Item. Noted by the Applicant.
9.	The holder of an environmental authorisation must notify the competent authority of any alienation, transfer and change of ownership rights in the property on which the activity is to take place.	N/A	N/A	Information Item. Noted by the Applicant. No alienation, transfer and change of ownership rights has taken place on the authorised properties.
Notification of authorisation and right to appeal				
10.	The holder of the authorisation must notify every registered interested and affected party, in writing and within 12 (twelve) calendar days of the date of this environmental authorisation, of the decision to authorise the activity.	N	0	Proof of notifying interested and affected parties of the decision within 14 days was not available at the time of the audit.
11.1-11.4	The notification referred to must – 1 1.1. specify the date on which the authorisation was issued; 11.2. inform the interested and affected party of the appeal procedure provided for in Chapter 7 of the Environmental Impact Assessment Regulations, 2010; 11.3. advise the interested and affected party that a copy of the authorisation will be furnished on request; and, 11.4. give the reasons of the competent authority for the decision	N	0	Proof of notifying interested and affected parties of the decision within 14 days was not available at the time of the audit.



Ref #	Condition	Compliance Y/N	Compliance Rating	Comments/ Verification
12.1-12.3	The holder of the authorisation must publish a notice 12.1. informing interested and affected parties of the decision; 12.2. informing interested and affected parties where the decision can be accessed; and, 12.3. drawing the attention of interested and affected parties to the fact that an appeal may be lodged against this decision in the newspaper(s) contemplated and used in terms of regulation 54(2)(c) and (d) and which newspaper was used for the placing of advertisements as part of the public participation process.	N	0	Proof of publishing a notice informing interested and affected parties of the decision; where it can be accessed; and drawing the attention of I&APs to the fact that an appeal may be lodged against the EA decision in terms of the National Appeal Regulations, 2014 was not available at the time of the audit.
Management of the activity				



Ref #	Condition	Compliance Y/N	Compliance Rating	Comments/ Verification
13.1.- 13.15	<p>13. A copy of the final development layout map must be made available for comments by registered Interested and Affected Parties and the applicant must consider such comments. Once amended, the final development layout map must be submitted to the Department for written approval prior to commencement of the activity. All available biodiversity information must be used in the finalisation of the layout map. Existing infrastructure must be used as far as possible e.g. roads. The layout map must indicate the following:</p> <p>13.1 Cable routes and trench dimensions (where they are not along internal roads);</p> <p>13.2 A 150 m and 100m buffer respectively between watercourses; ridge edge and the turbines/construction activities;</p> <p>13.3 Position of wind turbines and associated infrastructure;</p> <p>13.4 Foundation footprint;</p> <p>13.5 Internal roads indicating width;</p> <p>13.6 Wetlands, drainage lines, rivers, stream and water crossing of roads and cables;</p> <p>13.7 All sensitive features e.g. heritage sites, wetlands, pans and drainage channels that will be affected by the facility and associated infrastructure;</p> <p>13.8 Substation(s) inverters and/or transformer(s) sites including their entire footprint;</p> <p>13.9 Connection routes (including pylon positions) to the distribution/transmission network;</p> <p>13.10 All existing infrastructure on the site, especially roads;</p> <p>13.11 Soil heaps (temporary for topsoil and subsoil and permanently for excess material);</p> <p>13.12 Temporary construction laydown areas;</p> <p>13.13 Borrow pits;</p> <p>13.14 Buildings, including accommodation; and,</p> <p>13.15 All "no-go" and buffer areas</p>	N/A	N/A	Condition is no longer applicable at this stage of the project.



Ref #	Condition	Compliance Y/N	Compliance Rating	Comments/ Verification
14.	<p>Furthermore, a shapefile of the approved development layout/footprint must be submitted to this Department within two months from the date of this decision. The shapefile must be created using the Hartebeesthoek 94 Datum and the data should be in Decimal Degree Format using the WGS 84 Spheroid. The shapefile must include at a minimum the following extensions i.e. .shp; .shx; .dbf; prj; and, .xml (Metadata file). If specific symbology was assigned to the file, then the .avl and/or the .lyr file must also be included. Data must be mapped at a scale of 1:10 000 (please specify if an alternative scale was used). The metadata must include a description of the base data used for digitizing. The shapefile must be submitted in a zip file using the EIA application reference number as the title. The shape file must be submitted to:</p> <p>Postal Address: Department of Environmental Affairs Private Bag x447 Pretoria 0001</p> <p>Physical address: Department of Environmental Affairs Environment House 473 Steve Biko, Arcadia, Pretoria, 0083.</p> <p>For Attention: Mr Muhammad Essop Integrated Environmental Authorisations Strategic Infrastructure Developments Telephone Number: (012) 399 9406 Email Address: MEssop@environment.gov.za</p>	N/A	N/A	Condition is no longer applicable at this stage of the project.
15.	<p>The Environmental Management Programme (EMPr) submitted as part of the EMPr is not approved and must be amended to include measures as dictated by the final site lay-out map and micro-siting; and the provisions of this environmental authorisation. The EMPr must be made available for comments by registered Interested and Affected Parties and the applicant</p>	N/A	N/A	Condition is no longer applicable at this stage of the project.



Ref #	Condition	Compliance Y/N	Compliance Rating	Comments/ Verification
	must consider such comments. Once amended, the final EMPr must be submitted to the Department for written approval prior to commencement of the activity. Once approved the EMPr must be implemented and adhered to			
16.	The EMPr is amendable and must be implemented and strictly enforced during all phases of the project. It shall be seen as a dynamic document and shall be included in all contract documentation for all phases of the development when approved.	N/A	N/A	Information item. Noted by the Holder of the EA.
17.	Changes to the EMPr, which are environmentally defensible, shall be submitted to this Department for acceptance before such changes could be effected.	N/A	N/A	Information item. Noted by the Holder of the EA.
18.	The Department reserves the right to amend the EMPr should any impacts that were not anticipated or covered in the EMPr be discovered.	N/A	N/A	Information item. Noted by the Holder of the EA.
19.	The provisions of the approved EMPr including recommendations and mitigation measures in the EMPr and specialist studies shall be an extension of the conditions of this EA and therefore noncompliance with them would constitute noncompliance with the EA.	N/A	N/A	Information item. Noted by the Holder of the EA.
20.1-20.15	20. The EMPr amendment must include the following: 20.1. The requirements and conditions of this authorisation. 20.2. All mitigation measure arising from compliance with conditions 49 of this EA. 20.3. All recommendations and mitigation measures recorded in the EIAr. 20.4. All mitigation measures as listed in the specialist reports must be included in the EMPr and implemented. 20.5. The final site layout map. 20.6. An alien invasive management plan to be implemented during construction and operation of the facility. The plan must include mitigation measures to reduce the invasion of alien species and ensure that the continuous monitoring and removal of alien species is undertaken.	N/A	N/A	Condition is no longer applicable at this stage of the project.



Ref #	Condition	Compliance Y/N	Compliance Rating	Comments/ Verification
	<p>20.7. A plant rescue and protection plan which allows for the maximum transplant of conservation important species from areas to be transformed. This plan must be compiled by a vegetation specialist familiar with the site in consultation with the ECO and be implemented prior to commencement of the construction phase.</p> <p>20.8. A re-vegetation and habitat rehabilitation plan to be implemented during the construction and operation of the facility. Restoration must be undertaken as soon as possible after completion of construction activities to reduce the amount of habitat converted at any one time and to speed up the recovery to natural habitats.</p> <p>20.9. A traffic management plan for the site access roads to ensure that no hazards would results from the increased truck traffic and that traffic flow would not be adversely impacted. This plan must include measures to minimize impacts on local commuters e.g. limiting construction vehicles travelling on public roadways during the morning and late afternoon commute time and avoid using roads through densely populated built-up areas so as not to disturb existing retail and commercial operations.</p> <p>20.10.A storm water management plan to be implemented during the construction and operation of the facility. The plan must ensure compliance with applicable regulations and prevent off-site migration of contaminated storm water or increased soil erosion. The plan must include the construction of appropriate design measures that allow surface and subsurface movement of water along drainage lines so as not to impede natural surface and subsurface flows. Drainage measures must promote the dissipation of storm water run-off.</p> <p>20.11. An erosion management plan for monitoring and rehabilitating erosion events associated with the facility. Appropriate erosion mitigation must form part of this plan to prevent and reduce the risk of any potential erosion.</p>			



Ref #	Condition	Compliance Y/N	Compliance Rating	Comments/ Verification
	<p>20.12. An effective monitoring system to detect any leakage or spillage of all hazardous substances during their transportation, handling, use and storage. This must include precautionary measures to limit the possibility of oil and other toxic liquids from entering the soil or storm water systems.</p> <p>20.13. Measures to protect hydrological features such as streams, rivers, pans, wetlands, dams and their catchments, and other environmental sensitive areas from construction impacts including the direct or indirect spillage of pollutants.</p> <p>20.14. An environmental sensitivity map indicating environmental sensitive areas and features identified during the EIA process.</p> <p>20.15. A map combining the final layout map superimposed (overlain) on the environmental sensitivity map. This map must reflect the proposed location of the Wind Energy Facility as stated in the EMPr and this authorisation.</p>			
Environmental Control Officer (ECO) and duties				
21.	The holder of this authorisation must appoint an independent Environmental Control Officer (ECO) with experience or expertise in the field for the construction phase of the development. The ECO will have the responsibility to ensure that the conditions referred to in this authorisation are implemented and to ensure compliance with the provisions of the EMPr.	N/A	N/A	EIMS (Pty) Ltd was appointed to provide ECO services to the project.
22.	The ECO must be appointed before commencement of any authorised activity.	N/A	N/A	EIMS (Pty) Ltd was appointed to provide ECO services to the project.
23.	Once appointed, the name and contact details of the ECO must be submitted to the Director: Compliance Monitoring of this Department.	N/A	N/A	ECO details were submitted on the 25th of September 2019.
24.	The ECO must meet with the contractors to discuss the conditions of the EA and the contents of the EMPr prior to any site clearing occurring.	N/A	N/A	ECOs conducted a high-level training to the contractor on the requirements of the EA and EMPr.
25.	The ECO must remain employed until all rehabilitation measures, as required for implementation due to construction damage, are completed and the site is ready for operation.	N/A	N/A	The ECO was employed until the rehabilitation measures.



Ref #	Condition	Compliance Y/N	Compliance Rating	Comments/ Verification
26.1-26.7	<p>26. The ECO must:</p> <p>26.1. Keep record of all activities on site, problems identified, transgressions noted, and a schedule of tasks undertaken by the ECO,</p> <p>26.2. Keep and maintain a detailed incident (including spillage of bitumen, fuels, chemicals, or any other material) and complaint register on site indicating how these issues were addressed, what rehabilitation measures were taken and what preventative measures were implemented to avoid re-occurrence of incidents/complaints.</p> <p>26.3. Keep and maintain a daily site diary.</p> <p>26.4. Keep copies of all reports submitted to the Department.</p> <p>26.5. Keep and maintain a schedule of current site activities including the monitoring of such activities.</p> <p>26.6. Obtain and keep record of all documentation, permits, licences and authorisations such as waste disposal certificates, hazardous waste landfill site licences etc, required by this facility.</p> <p>26.7. Compile a monthly monitoring report.</p>	N/A	N/A	Condition is no longer applicable at this stage of the project.
Recording and reporting to the Department				
27.	The holder of this authorisation must keep all records relating to monitoring and auditing on site and make it available for inspection to any relevant and competent authority in respect of this development	N	0	It was reported that all monitoring and auditing records are kept on site on an external hard drive. This hard drive was not available on site during the audit.
28.	All documentation e.g. audit/monitoring/compliance reports and notifications, required to be submitted to the Department in terms of this authorisation, must be submitted to the Director: Compliance Monitoring at this Department.	Y	4	All ECO reports were submitted to the department.
Environmental audit report				



Ref #	Condition	Compliance Y/N	Compliance Rating	Comments/ Verification
29.	The holder of the authorisation must submit an environmental audit report to the Director: Compliance Monitoring of the Department within 30 days of completion of the construction phase (i.e. within 30 days of site handover) and within 30 days of completion of rehabilitation activities.	Y	4	Environmental audit reports were submitted to the department within 30 days of completion of the construction phase and a final environmental audit was undertaken on 24 November 2022. It must however, be noted that rehabilitation had not been undertaken at the camps (at the landowners request) and no written confirmation of the proposed future use of these areas was available at the time of the audit.
30.1-30.9	30. The environmental audit report must: 30.1. Be compiled by an independent environmental auditor; 30.2. Indicate the date of the audit, the name of the auditor and the outcome of the audit; 30.3. Evaluate compliance with the requirements of the approved EMPr and this environmental authorisation; 30.4. Include measures to be implemented to attend to any non-compliances or degradation noted; 30.5. Include copies of any approvals granted by other authorities relevant to the development for the reporting period; 30.6. Highlight any outstanding environmental issues that must be addressed, along with recommendations for ensuring these issues are appropriately addressed; 30.7. Include a copy of this authorisation and the approved EMPr; 30.8. Include all documentation such as waste disposal certificates, hazardous waste landfill site licences etc. pertaining to this authorisation; and 30.9. Include evidence of adherence to the conditions of this authorisation and the EMPr where relevant such as training records and attendance records.	Y	4	EIMS (Pty) Ltd was appointed to provide an independent Auditor to the project. The audit report was compiled in accordance to the requirements of this EA.
Commencement of the activity				
31.	The authorised activity shall not commence within twenty (20) days of the date of signature of the authorisation.	Y	4	Authorised activity commenced well after twenty (20) days of the date of signature of the authorisation.



Ref #	Condition	Compliance Y/N	Compliance Rating	Comments/ Verification
32.	An appeal under section 43 of the National Environmental Management Act (NEMA), Act 107 of 1998 (as amended), does not suspend an environmental authorisation or exemption, or any provisions or conditions attached thereto, or any directive, unless the Minister, MEC or delegated organ of state directs otherwise.	N/A	N/A	Information item. Noted by the Holder of the EA.
33.	Should you be notified by the Minister of a suspension of the authorisation pending appeal procedures, you may not commence with the activity until such time that the Minister allows you to commence with such an activity in writing.	N/A	N/A	Information item. Noted by the Holder of the EA.
34.	The holder of this authorisation must obtain a Water Use Licence from the Department of Water Affairs (DWA) prior to the commencement of the project should the holder impact on any wetland or water resource. A copy of the license must be kept by the ECO.	N/A	N/A	Information item. Noted by the Holder of the EA.
Notification to authorities				
35.	Fourteen (14) days written notice must be given to the Department that the activity will commence. Commencement for the purposes of this condition includes site preparation. The notice must include a date on which it is anticipated that the activity will commence. This notification period may coincide with the Notice of Intent to Appeal period, within which construction may not commence.	Y	4	The Department of Environmental Affairs was notified on the 25th of September 2019 of commencement of the activity.
Operation of the activity				
36.	Fourteen (14) days written notice must be given to the Department that the activity operational phase will commence.	Y	4	The Department of Environmental Affairs was notified on the 25th of September 2019 for commencement of the activity.
37.	The holder of this authorisation must compile an operational EMPr for the operational phase of the activity or alternatively, if the holder has an existing operational environmental management system, it must be amended to include the operation of the authorised activity.	Y	4	EMPr revision 2 of August 2019 covers both construction and the operational phase.



Ref #	Condition	Compliance Y/N	Compliance Rating	Comments/ Verification
38	The EMPr must form part of the contract with the EPC Contractor appointed to construct the proposed facility and must be used to ensure compliance with environmental specifications and management measures.	N/A	N/A	Condition is no longer applicable at this stage of the project.
Site closure and decommissioning				
39.	Should the activity ever cease or become redundant, the applicant shall undertake the required actions as prescribed by legislation at the time and comply with all relevant legal requirements administered by any relevant and competent authority at that time.	N/A	N/A	Information item. Noted by the Holder of the EA.
Specific conditions-Avifauna and bats				
40.	Avifauna and bats-A bird and bat monitoring programme must be implemented to document the effect of the operation of the energy facility on avifauna and bats. Active breeding nests in the immediate surroundings must be monitored during the construction phase and further mitigation measures must be discussed with the avifaunal specialist and implemented if necessary.	N	0	It was reported that the bird and bat monitoring programme has not been implemented as yet.
41.	The results of the pre-construction bat monitoring programme dated April 2014 must inform the final layout and the construction schedule of the energy facility.	N/A	N/A	Information item. Noted by the Holder of the EA.
42.	A construction monitoring plan must survey bird communities on the Wind Energy Facility and must be implemented to monitor impacts resulting from the infrastructure installations. This plan must have a minimum duration of at least 1 (one) year.	N/A	N/A	Condition is no longer applicable at this stage of the project.
43.	Post-construction avifauna and bat monitoring by an independent monitor should take place for at least two years after operation has commenced. It is recommended that this is done in accordance with BirdLife South Africa/Endangered Wildlife Trust: Best practice guidelines for avian monitoring and impact mitigation at proposed wind energy development sites in Southern Africa.	N	0	It was reported that the bird and bat monitoring programme has not been implemented as yet.



Ref #	Condition	Compliance Y/N	Compliance Rating	Comments/ Verification
44.	Reports regarding bird monitoring must be submitted to the relevant provincial environmental department, BirdLife South Africa, the Endangered Wildlife Trust (EWT) and this Department on a quarterly basis. The report will assist all stakeholders in identifying potential and additional mitigation measures and to establish protocols for a bird monitoring programme for wind energy development in the country.	N	0	It was reported that the bird and bat monitoring programme has not been implemented as yet. Therefore no reports have been submitted to the relevant provincial environmental department, BirdLife South Africa, the Endangered Wildlife Trust (EWT) and the DFFE. It is recommended that this monitoring be implemented as a matter of urgency.
45.	The facility must be designed to discourage the use of infrastructure components as perching or roosting substrates by birds and bats.	N/A	N/A	Condition is no longer applicable at this stage of the project.
46.	During construction the applicant must restrict the construction activities to the footprint area. No access to the remainder of the property is allowed.	N/A	N/A	Condition is no longer applicable at this stage of the project.
47.	Anti-collision devices such as bird flappers must be installed where power lines cross avifaunal corridors (e.g. grasslands, rivers, wetlands, and dams). The input of an avifaunal specialist must be obtained for the fitting of the anti-collision devices onto specific sections of the line once the exact positions of the towers have been surveyed and pegged. Additional areas of high sensitivity along the preferred alignment must also be identified by the avifaunal specialist for the fitment of anti-collision devices. These devices must be according to Eskom's Transmission and EWT's Guidelines	Y	4	Bird divertors were installed on certain portions of the overhead powerlines in consultation with the Ecologist.
48.	A pre-construction walk through on the selected power line alignment by a bat specialist, avifaunal specialist and ecologist, must be conducted to ensure that the micro-siting of the turbines has the least possible impact, there are no nests sites of priority species on or close to the construction corridor, and all protected plant species impacted are identified.	N/A	N/A	A pre-construction walk through was done with the bat specialist
Specific conditions-Vegetation, wetlands and water resources				
49.	A 150 m between watercourses and 100m buffer between the ridge edge and the turbines/construction activities must be implemented.	N/A	N/A	Condition is no longer applicable at this stage of the project.



Ref #	Condition	Compliance Y/N	Compliance Rating	Comments/ Verification
50.	Vegetation clearing must be limited to the authorised footprint.	N/A	N/A	Condition is no longer applicable at this stage of the project.
51.	Before the clearing of the site, the appropriate permits must be obtained from the Department of Agriculture, Forestry and Fisheries (DAFF) for the removal of plants listed in the National Forest Act and from the relevant provincial department for the destruction of species protected in terms of the specific provincial legislation. Copies of the permits must be kept by the ECO.	N/A	N/A	Permit for removal of protected flora was obtained.
52.	Construction activities must be restricted to demarcated areas to restrict the impact on sensitive environmental features	N/A	N/A	Condition is no longer applicable at this stage of the project.
53.	All areas of disturbed soil must be reclaimed using only indigenous grass and shrubs. Reclamation activities shall be undertaken according to the rehabilitation plan to be included in the final EMPr	N	2	Reclamation activities were undertaken according to the rehabilitation plan, however, some disturbed areas such as the camps had not been fully rehabilitated at the time of the audit.
54.	Topsoil from all excavations and construction activities must be salvaged and reapplied during reclamation.	N	0	Topsoil was observed windrowed along the western side of the main camp.
55.	No exotic plants may be used for rehabilitation purposes; only indigenous plants of the area may be utilised.	Y	4	Seeding was done according to the rehabilitation plan drafted by an Ecologist which only suggested the use of indigenous seeds.
56.	No activities will be allowed to encroach into a water resource without a water use license being in place from the Department of Water Affairs.	Y	4	General Authorisations for crossing the drainage lines, abstraction for construction purposes were granted
57.	Cleared alien vegetation must not be dumped on adjacent intact vegetation during clearing but must be temporarily stored in a demarcated area.	N/A	N/A	Condition is no longer applicable at this stage of the project.
58.	Removal of alien invasive species or other vegetation and follow-up procedures must be in accordance with the Conservation of Agricultural Resources Act, 1983 (Act 43 of 1983).	Y	4	No concerns were noted with regards to removal of alien vegetation. An alien management plan was developed by an Ecologist during the construction phase.
59.	The holder of this authorisation must ensure that all the "No-go" and buffer areas are clearly demarcated (using fencing and appropriate signage) before construction commences.	N/A	N/A	Condition is no longer applicable at this stage of the project.
60.	Contractors and construction workers must be clearly informed of the no-go areas.	N/A	N/A	Condition is no longer applicable at this stage of the project.



Ref #	Condition	Compliance Y/N	Compliance Rating	Comments/ Verification
61.	Where roads pass right next to major water bodies, provision shall be made for fauna such as toads to pass under the roads by using culverts or similar structures	N/A	N/A	Condition is no longer applicable at this stage of the project.
62.	Bridge design must be such that it minimises impact to riparian areas with minimal alterations to water flow and must allow the movement of fauna and flora.	N/A	N/A	Condition is no longer applicable at this stage of the project.
63.	The final development area should be surveyed for species suitable for search and rescue, which should be trans-located prior to the commencement of construction.	N/A	N/A	Botanist specialist (Brian Colloty) conducted search and rescue for the project footprint.
64.	Electric fencing should not have any strands within 30cm of the ground, which should be sufficient to allow smaller mammals, reptiles and leopard tortoises to pass through, but stiff remain effective as a security barrier.	N/A	N/A	Condition is no longer applicable at this stage of the project.
65.	Disturbed areas must be rehabilitated as soon as possible after construction with locally indigenous plants to enhance the conservation of existing natural vegetation on site.	N	2	Rehabilitation activities were undertaken according to the rehabilitation plan, however, some disturbed areas such as the camps had not been fully rehabilitated at the time of the audit. Furthermore, topsoil was observed windrowed along the western side of the main camp.
66.	Wetlands, rivers and river riparian areas must be treated as "no-go" areas and appropriately demarcated as such. No vehicles, machinery, personnel, construction material, fuel, oil, bitumen or waste must be allowed into these areas without the express permission of and supervision by the ECO, except for rehabilitation work in these areas.	N/A	N/A	Condition is no longer applicable at this stage of the project.
67.	Workers must be made aware of the importance of not destroying or damaging the vegetation along rivers and in wetland areas and this awareness must be promoted throughout the construction phase.	N/A	N/A	Condition is no longer applicable at this stage of the project.
68.	Freshwater ecosystems located in close proximity to the construction areas must be inspected on a regular basis by the ECO for signs of disturbance from construction activities. If signs of disturbance are noted, immediate action must be taken to remedy the situation and, if necessary, a freshwater ecologist must be consulted for advice on the most suitable remediation measures	N/A	N/A	Condition is no longer applicable at this stage of the project.



Ref #	Condition	Compliance Y/N	Compliance Rating	Comments/ Verification
69.	No discharge of effluents or polluted water must be allowed into any rivers or wetland areas.	Y	4	No discharge of any kind into rivers or wetlands was noted during the audit inspection.
70.	If construction areas are to be pumped of water (e.g. after rains), this water must be pumped into an appropriate settlement area, and not allowed to flow into any rivers or wetland areas.	N/A	N/A	Condition is no longer applicable at this stage of the project.
71.	Workers must be made aware of the importance of not polluting rivers or wetlands and of not undertaking activities that could result in such pollution, and this awareness must be promoted throughout the construction phase	N/A	N/A	Condition is no longer applicable at this stage of the project.
72.	Freshwater ecosystems located in close proximity to the site must be inspected on a regular basis (but especially after rainfall) by the ECO for signs of sedimentation and pollution. If signs of sedimentation or pollution are noted, immediate action must be taken to remedy the situation and, if necessary, a freshwater ecologist must be consulted for advice on the most suitable remediation measures.	N/A	N/A	Condition is no longer applicable at this stage of the project.
Specific conditions-Roads and transportation				
73.	Existing road infrastructure must be used as far as possible for providing access to the proposed turbine positions. Where no road infrastructure exists, new roads should be placed within existing disturbed areas or environmental conditions must be taken into account to ensure the minimum amount of damage is caused to natural habitats.	N/A	N/A	Condition is no longer applicable at this stage of the project.
74.	Signs must be placed along construction roads to identify speed limits, travel restrictions, and other standard traffic control information. To minimize impacts on local commuter, consideration should be given to limiting construction vehicles travelling on public roadways during the morning and late afternoon commute time.	N/A	N/A	Condition is no longer applicable at this stage of the project.
75.	Internal access roads must be located to minimize stream crossings. All structures crossing streams must be located and constructed so that they do not decrease channel stability or increase water velocity	N/A	N/A	Condition is no longer applicable at this stage of the project.



Ref #	Condition	Compliance Y/N	Compliance Rating	Comments/ Verification
76.	A designated access to the site must be created and clearly marked to ensure safe entry and exit.	Y	4	Designated access to site were observed with security personnel.
77.	Signage must be erected at appropriate points warning of turning traffic and the construction site.	N/A	N/A	Condition is no longer applicable at this stage of the project.
78.	Construction vehicles carrying materials to the site should avoid using roads through densely populated built-up areas so as not to disturb existing retail and commercial operations.	N/A	N/A	Condition is no longer applicable at this stage of the project.
79.	Road borders should be regularly maintained to ensure that vegetation remains short and that they therefore serve as an effective firebreak.	N/A	N/A	Condition is no longer applicable at this stage of the project.
80.	Roads must be designed so that changes to surface water runoff are avoided and erosion is not initiated.	N/A	N/A	Condition is no longer applicable at this stage of the project.
81.	All construction vehicles should adhere to a low speed limit to avoid collisions with susceptible species such as snakes and tortoises.	N/A	N/A	Condition is no longer applicable at this stage of the project.
82.	The holder of this authorisation must ensure that the National Noise Control Regulations and SANS10103:2008 are adhered to and measures to limit noise from the work site are implemented.	N/A	N/A	Condition is no longer applicable at this stage of the project.
83.	The holder of this authorisation must ensure that the construction staff working in areas where the 8-hour ambient noise levels exceed 75dBA must wear ear protection equipment.	N/A	N/A	Condition is no longer applicable at this stage of the project.
Specific conditions-Noise				
84.	The holder of this authorisation must ensure that all equipment and machinery are well maintained and equipped with silencers	N/A	N/A	Condition is no longer applicable at this stage of the project.
85.	The holder of this authorisation must provide a prior warning to the community when a noisy activity e.g. blasting is to take place,	N/A	N/A	Condition is no longer applicable at this stage of the project.
86.	All wind turbines should be located at a setback distance of 500m from any homestead and a day/night noise criteria level at the nearest residents of 45dB(A) should be used to locate the turbines. The 500m setback distance can be relaxed if local factors; such as high ground between the noise source and the receiver, indicates that a noise disturbance will not occur.	N/A	N/A	Condition is no longer applicable at this stage of the project.



Ref #	Condition	Compliance Y/N	Compliance Rating	Comments/ Verification
87.	Positions of turbines jeopardizing compliance with accepted noise levels should be revised during the micro-siting of the units in question and predicted noise levels re-modelled by the noise specialist, in order to ensure that the predicted noise levels are less than 45dB(A).	N/A	N/A	Condition is no longer applicable at this stage of the project.
88.	Construction staff must be trained in actions to minimise noise impacts.	N/A	N/A	Condition is no longer applicable at this stage of the project.
Specific conditions-Visual resources				
89.	The holder of this authorisation must reduce visual impacts during construction by minimising areas of surface disturbance, controlling erosion, using dust suppression techniques and restoring exposed soil as closely as possible to their original contour and vegetation	N/A	N/A	Condition is no longer applicable at this stage of the project.
90.	A lighting engineer must be consulted to assist in the planning and placement of light fixtures in order to reduce visual impacts associated with glare and light trespass.	N/A	N/A	Condition is no longer applicable at this stage of the project.
91.	Lighting of main structures (turbines) and ancillary buildings should be designed to minimise light pollution without compromising safety, and turbines must be lit according to Civil Aviation Regulations.	Y	4	Turbines are lit in accordance with the
92.	Signage on or near wind turbines must be avoided unless they serve to inform the public about wind turbines and their function,	Y	4	Only necessary signage was noted near turbines.
93.	Commercial messages and graffiti on turbines must be avoided.	Y	4	No commercial messages and/or graffiti was noted on turbines
Specific conditions-Human health and safety				
94.	A health and safety programme must be developed to protect both workers and the general public during construction, operation and decommissioning of the energy facility. The programme must establish a safety zone for wind turbines from residences and occupied buildings, roads, rights-of-way and other public access areas that is sufficient to prevent accidents resulting from the operation of the wind turbines	N/A	N/A	Health and Safety Specification was developed and accepted by client in the month of October 2019.



Ref #	Condition	Compliance Y/N	Compliance Rating	Comments/ Verification
95.	Potentials interference with public safety communication systems (e.g. radio traffic related to emergency activities) must be avoided.	N/A	N/A	Condition is no longer applicable at this stage of the project.
96.	The holder of this authorisation must ensure that the operation of the wind facility shall comply with the relevant communication regulations or guidelines relating to electromagnetic interference, e.g. microwave, radio and television transmissions	N/A	N/A	Condition is no longer applicable at this stage of the project.
97.	The holder of this authorisation must obtain approval from the South Africa Civil Aviation Authority that the wind facility will not interfere with the performance of aerodrome radio Communication, Navigation and Surveillance (CNS) equipment, especially the radar, prior to commencement of the activity. A copy of the approval must be kept on site by the ECO.	N/A	N/A	Condition is no longer applicable at this stage of the project.
98.	The holder of this authorisation must obtain approval from the South Africa Weather Services (WeatherSA) that the energy facility will not interfere with the performance of their equipment especially radar, prior to commencement of the activity. A copy of the approval must be kept on site by the ECO.	N/A	N/A	Condition is no longer applicable at this stage of the project.
99.	The holder of this authorisation must train safety representatives, managers and workers in workplace safety, the construction process must be compliant with all safety and health measures as prescribed by the relevant act.	N/A	N/A	Condition is no longer applicable at this stage of the project.
100.	Liaison with landowners/farm managers must be done prior to construction in order to provide sufficient time for them to plan agricultural activities.	N/A	N/A	Condition is no longer applicable at this stage of the project.
101.	No unsupervised open fires for cooking or heating must be allowed on site.	N/A	N/A	Condition is no longer applicable at this stage of the project.
Specific conditions-Hazardous materials and waste management				
102.	The Batching plant must preferably be located within laydown areas outside sensitive ecological, heritage and paleontological areas.	N/A	N/A	Condition is no longer applicable at this stage of the project.



Ref #	Condition	Compliance Y/N	Compliance Rating	Comments/ Verification
103.	Areas around fuel tanks must be bunded or contained in an appropriate manner as per the requirements of SABS 089:1999 Part 1.	N/A	N/A	Condition is no longer applicable at this stage of the project.
104.	Leakage of fuel must be avoided at all times and if spillage occurs, it must be remedied immediately.	N/A	N/A	Condition is no longer applicable at this stage of the project.
105	Hazardous waste such as bitumen, oils, oily rags, paint tins etc. must be disposed of at an approved waste landfill site licensed to accept such waste.	N/A	N/A	Condition is no longer applicable at this stage of the project.
106.	No dumping or temporary storage of any materials may take place outside designated and demarcated laydown areas, and these must all be located within areas of low environmental sensitivity	N/A	N/A	Condition is no longer applicable at this stage of the project.
107.	Hazardous substances must not be stored where there could be accidental leakage into surface or subterranean water.	N/A	N/A	Condition is no longer applicable at this stage of the project.
108.	Hazardous and flammable substances must be stored and used in compliance to the applicable regulations and safety instructions. Furthermore, no chemicals must be stored nor may any vehicle maintenance occur within 350m of the temporal zone of wetlands, a drainage line with or without an extensive floodplain or hillside wetlands.	N/A	N/A	Condition is no longer applicable at this stage of the project.
109.	Temporary bunds must be constructed around chemical storage to contain possible spills	N/A	N/A	Condition is no longer applicable at this stage of the project.
110.	Spill kits must be made available on-site for the clean-up of spills.	N/A	N/A	Condition is no longer applicable at this stage of the project.
111.	An integrated waste management approach must be implemented that is based on waste minimisation and must incorporate reduction, recycling and re-use options where appropriate. Where solid waste is disposed of, such disposal shall only occur at a landfill licensed in terms of section 20(b) of the National Environment Management Waste Act, 2008 (Act 59 of 2008).	N/A	N/A	Condition is no longer applicable at this stage of the project.
112.	The holder of this authorisation must provide sanitation facilities within the construction camps and along the road so that workers do not pollute the surrounding environment. These facilities must be removed from the site when the construction phase is	N/A	N/A	Condition is no longer applicable at this stage of the project.



Ref #	Condition	Compliance Y/N	Compliance Rating	Comments/ Verification
	completed as well as associated waste to be disposed of at a registered waste disposal site			
113.	The holder of this authorisation must take note that no temporary site camps will be allowed outside the footprint of the development area as the establishment of such structures might trigger a listed activity as defined in the Environmental Impact Assessment Regulations, 2010.	N/A	N/A	Condition is no longer applicable at this stage of the project.
Specific conditions-Excavation and blasting activities				
114.	Underground cables and internal access roads must be aligned as much as possible along existing infrastructure to limit damage to vegetation and watercourses.	N/A	N/A	Condition is no longer applicable at this stage of the project.
115.	Cabling routes outside internal access routes must be approved by this Department.	N/A	N/A	Condition is no longer applicable at this stage of the project.
116.	Foundations and trenches must be backfilled with originally excavated materials as much as possible. Excess excavation materials must be disposed of only in approved areas or, if suitable, stockpiled for use in reclamation activities.	N/A	N/A	Condition is no longer applicable at this stage of the project.
117.	Borrow materials must be obtained only from authorized and permitted sites. Permits must be kept on site by the ECO.	N/A	N/A	Condition is no longer applicable at this stage of the project.
118.	Anti-erosion measures such as silt fences must be installed in disturbed areas.	N/A	N/A	Condition is no longer applicable at this stage of the project.
Specific conditions-Air emissions				
119.	Dust abatement techniques must be used before and during surface clearing, excavation, or blasting activities.	N/A	N/A	Condition is no longer applicable at this stage of the project.



Ref #	Condition	Compliance Y/N	Compliance Rating	Comments/ Verification
120.	Appropriate dust suppression techniques must be implemented on all exposed surfaces during periods of high wind. Such measures may include wet suppression, chemical stabilisation, the use of a wind fence, covering surfaces with straw chippings and re-vegetation of open areas.	N/A	N/A	Condition is no longer applicable at this stage of the project.
Specific conditions-Historical / cultural / paleontological resources				
121.	All buffer zones recommended in the specialist environmental reports be respected.	N/A	N/A	Condition is no longer applicable at this stage of the project.
122.	The locations identified as sensitive such as grave sites, should also be protected by buffers. A buffer of 30m from heritage features must be implemented throughout the development footprint.	N/A	N/A	Condition is no longer applicable at this stage of the project.
123.	If concentrations of archaeological heritage material, fossils and human remains are uncovered during construction, all work must cease immediately and be reported to the South African Heritage Resources Agency (SAHRA) so that a systematic and professional investigation/ excavation can be undertaken.	N/A	N/A	Condition is no longer applicable at this stage of the project.
124.	Construction managers/foremen must be informed before construction starts on the possible types of heritage sites and cultural material they may be encountered and the procedures to follow when they find sites.	N/A	N/A	Condition is no longer applicable at this stage of the project.
125.	All buffers and no-go areas stipulated in this report must be adhered to for both the facilities and all roads and power lines.	N/A	N/A	Condition is no longer applicable at this stage of the project.
126.	Should any human remains be uncovered during development they must be immediately protected in situ and reported to the heritage authorities or to an archaeologist. The remains will need to be exhumed at the cost of the developer.	N/A	N/A	Condition is no longer applicable at this stage of the project.



Ref #	Condition	Compliance Y/N	Compliance Rating	Comments/ Verification
127.	All construction and maintenance crew and vehicles (except small vehicles which may use existing farm tracks) should be kept out of the buffer zones.	N/A	N/A	Condition is no longer applicable at this stage of the project.
128.	The final layout should be shown to the appointed archaeologist before implementation to confirm that all significant heritage resources have been adequately protected.	N/A	N/A	Condition is no longer applicable at this stage of the project.
Specific conditions-Turbines position				
129.	Turbines must be positioned in such a way that shadow flicker does not affect any farm buildings.	N/A	N/A	Condition is no longer applicable at this stage of the project.
130.	The final placement of turbines must follow a micro sitting procedure involving a walk-through and identification of any sensitive areas by botanical and avifaunal specialists	N/A	N/A	Condition is no longer applicable at this stage of the project.
131.	Exclusion of sensitive ecological, heritage and paleontological areas from construction activities must inform micro sitting of all development activities. Proof thereof may be requested by this Department.	N/A	N/A	Condition is no longer applicable at this stage of the project.
General				
132.	A copy of this authorisation and the approved EMPr must be kept at the property where the activity will be undertaken. The authorisation and approved EMPr must be produced to any authorised official of the Department who requests to see it and must be made available for inspection by any employee or agent of the holder of the authorisation who works or undertakes work at the property.	N	0	It was reported that all monitoring and auditing records are kept on site on an external hard drive. This hard drive was not on site during the audit. Furthermore, no proof that documents were made available on the EGP website as required by the EA could be provided during the audit.
133.	The holder of the authorisation must notify both the Director: Integrated Environmental Authorisations and the Director: Compliance Monitoring at the Department, in writing and within 48 (forty-eight) hours, if any condition of this authorisation cannot be or is not adhered to. Any notification in terms of this condition must be accompanied by reasons for the non-compliance.	N/A	N/A	Information item. Noted by the Holder of the EA.



Ref #	Condition	Compliance Y/N	Compliance Rating	Comments/ Verification
134.	National government, provincial government, local authorities or committees appointed in terms of the conditions of this authorisation or any other public authority shall not be held responsible for any damages or losses suffered by the applicant or his successor in title in any instance where construction or operation subsequent to construction be temporarily or permanently stopped for reasons of non-compliance by the applicant with the conditions of authorisation as set out in this document or any other subsequent document emanating from these conditions of authorisation.	N/A	N/A	Information item. Noted by the Holder of the EA.



5.2.2 COMPLIANCE EVALUATION OF THE EMPR

A total of 292 commitments were assessed according to the assessment methodology as described in section 4.2 and the findings of the audit are presented in Table 6 below

Table 6: Compliance evaluation of EMPr conditions

Ref #	Condition	Compliance Y/N	Compliance Rating	Comments/ Verification
5.2	Design and Planning-Objective 1			
	Subject to acceptance from DEA, the layout as detailed in Appendix B must be implemented.	N/A	N/A	Condition is no longer applicable at this stage of the project.
	To ensure that pre-construction activities are undertaken in an environmentally friendly manner by e.g. avoiding identified sensitive areas.	N/A	N/A	Condition is no longer applicable at this stage of the project.
	To ensure the selection of the best environmental option for design of infrastructure.	N/A	N/A	Condition is no longer applicable at this stage of the project.
	To ensure that the design of the facility responds to the identified constraints identified through pre-construction bird and bat monitoring.	N/A	N/A	Condition is no longer applicable at this stage of the project.
	The Proponent to finalise layout of all components and submit to DEA for approval.	N/A	N/A	Condition is no longer applicable at this stage of the project.
	Bridge design must be such that it minimises impact to riparian areas with minimal alterations to water flow and must allow the movement of fauna and flora.	N/A	N/A	Condition is no longer applicable at this stage of the project.
	Ensure that proper planning is undertaken regarding the placement of lighting structures for the facility substation and that light fixtures only illuminate areas inside the facility substation site.	N/A	N/A	Condition is no longer applicable at this stage of the project.
	A comprehensive stormwater management must be compiled and detail how stormwater off hard surfaces will be managed to reduce velocities and volumes of water that could lead to erosion of surfaces (refer to Appendix G).	N/A	N/A	Condition is no longer applicable at this stage of the project.



Ref #	Condition	Compliance Y/N	Compliance Rating	Comments/ Verification
	The EMPr should form part of the contract with the Contractors appointed to construct and maintain the proposed wind energy facility and will be used to ensure compliance with environmental specifications and management measures. The implementation of this EMPr for all life cycle phases of the proposed project is considered to be key in achieving the appropriate environmental management standards as detailed for this project.	N/A	N/A	Condition is no longer applicable at this stage of the project.
	The final location of the wind turbines and associated infrastructure (including access roads) was informed by a survey undertaken by an ecological specialist to identify any of the Red List plant species that have a geographic distribution in the areas, this includes » Vulnerable species (Romulea eburnea, Lotononis venosa and Geissorhiza karooica); and » Rare species (Cleretum Iyratifolium and Strumaria karooica).	N/A	N/A	Condition is no longer applicable at this stage of the project.
	Water use license/ General Authorisation to be obtained for any impacts on wetlands / drainage lines (if applicable).	N/A	N/A	Condition is no longer applicable at this stage of the project.
	Water use license or General Authorisation to be obtained for abstraction of water from on-site borehole/s for construction or operation purposes.	N/A	N/A	Condition is no longer applicable at this stage of the project.
	Mining permit/license to be obtained for any borrow pits to be established for the project (if applicable).	N/A	N/A	Condition is no longer applicable at this stage of the project.
	Obtain required abnormal load permits for transportation of project components to site.	N/A	N/A	Condition is no longer applicable at this stage of the project.
	Determine an appropriate location for onsite batching outside of identified sensitive areas.	N/A	N/A	Condition is no longer applicable at this stage of the project.
	A detailed geotechnical investigation is required for the design phase.	N/A	N/A	Condition is no longer applicable at this stage of the project.



Ref #	Condition	Compliance Y/N	Compliance Rating	Comments/ Verification
	The facility must be designed to discourage the use of infrastructure components as perching or roosting substrates by birds.	N/A	N/A	Condition is no longer applicable at this stage of the project.
	Develop an alien invasive plant management plan for the site (refer to Appendix C).	N/A	N/A	Condition is no longer applicable at this stage of the project.
	Develop a plant rescue and protection plan for the site (refer to Appendix D).	N/A	N/A	Condition is no longer applicable at this stage of the project.
	Develop a re-vegetation and habitat rehabilitation plan for the site (refer to Appendix E).	N/A	N/A	Condition is no longer applicable at this stage of the project.
	Develop a traffic management plan for the site (refer to Appendix F).	N/A	N/A	Condition is no longer applicable at this stage of the project.
	Develop a storm water management plan for the site (refer to Appendix G).	N/A	N/A	Condition is no longer applicable at this stage of the project.
	Develop an erosion management plan for the site (refer to Appendix H).	N/A	N/A	Condition is no longer applicable at this stage of the project.
	Develop an effective monitoring system to detect any leakage or spillage of all hazardous substances during their transportation, handling, use and storage. This must include precautionary measures to limit the possibility of oil and other toxic liquids from entering the soil or storm water systems.	N/A	N/A	Condition is no longer applicable at this stage of the project.
	The holder of an environmental authorisation has the responsibility to notify the competent authority of any alienation, transfer and, change of ownership rights in the property on which the activity is to take place.	N/A	N/A	Condition is no longer applicable at this stage of the project.
	Submit a final development layout map for the entire wind farm for approval to the department, as required by the Environmental Authorisation (refer to Appendix B).	N/A	N/A	Condition is no longer applicable at this stage of the project.
	Fourteen (14) days written notice must be given to the Department that the activity will commence. The notification must include a date on which the activity will commence as well as the reference number.	N/A	N/A	Condition is no longer applicable at this stage of the project.



Ref #	Condition	Compliance Y/N	Compliance Rating	Comments/ Verification
	ECO to be appointed prior to the commencement of any authorised activities. Once appointed the name and contact details of the ECO must be submitted to the Director: Compliance Monitoring at the DEA.	N/A	N/A	Condition is no longer applicable at this stage of the project.
	Design meets objectives and does not unnecessarily degrade the environment.	N/A	N/A	Condition is no longer applicable at this stage of the project.
	Design and layouts etc. respond to the mitigation measures and recommendations in the EIA and walkthrough reports.	N/A	N/A	Condition is no longer applicable at this stage of the project.
	Ensure that the design implemented meets the objectives and mitigation measures in the EIA Report through review of the design by the Project Manager and Environmental Control Officer (ECO) Contractor and the Environmental Officer (EO) prior to the commencement of construction.	N/A	N/A	Condition is no longer applicable at this stage of the project.
Design and Planning-Objective 2				
	On-going communication with affected and surrounding landowners is important to maintain during the construction and operational phases of the wind farm. Any issues and concerns raised should be addressed as far as possible in as short a timeframe as possible.	N/A	N/A	Condition is no longer applicable at this stage of the project.
	Compile and implement a grievance mechanism procedure for the public (using Appendix I) to be implemented during both the construction and operational phases of the facility and if applicable during decommissioning. This procedure should include details of the contact person who will be receiving issues raised by interested and affected parties, and the process that will be followed to address issues. A Project Specific Grievance Mechanism will be developed and implemented prior to construction.	N/A	N/A	Condition is no longer applicable at this stage of the project.
	Develop and implement a grievance mechanism for the construction, operational and closure phases of the project for all employees, contractors, subcontractors and site personnel. This procedure should be in line with the South African Labour Law.	N/A	N/A	Condition is no longer applicable at this stage of the project.



Ref #	Condition	Compliance Y/N	Compliance Rating	Comments/ Verification
	Liaison with landowners is to be undertaken prior to the commencement of construction in order to agree on landowner-specific conditions during construction and maintenance.	N/A	N/A	Condition is no longer applicable at this stage of the project.
	An incident reporting system must be developed and used to record non-conformances to the EMPr.	N/A	N/A	Condition is no longer applicable at this stage of the project.
	Public complaints register must be developed and maintained on site in line with the Grievance mechanism (Appendix I).	N/A	N/A	Condition is no longer applicable at this stage of the project.
Design and Planning-Objective 3				
	All palaeontological specialist work should conform to international best practice for palaeontological fieldwork and (e.g. data recording fossil collection and curation) should adhere as far as possible to the minimum standards for Phase 2 palaeontological studies recently developed by SAHRA (2013).	N/A	N/A	Condition is no longer applicable at this stage of the project.
	On-site investigation to identify and cordon off sensitive heritage sites/areas must be undertaken prior to commencement of construction.	N/A	N/A	Condition is no longer applicable at this stage of the project.
	A realistic, collaborative monitoring programme and protocol should be drawn up by the palaeontologist in conjunction with the proponent.	N/A	N/A	Condition is no longer applicable at this stage of the project.
	If any changes are made to the final layout of the Soetwater Wind Energy Facility, an archaeological walk-through survey of the changes must be conducted and further mitigatory recommendations may be made if necessary.	N/A	N/A	Condition is no longer applicable at this stage of the project.
	All buffers and no-go areas stipulated in the Heritage Report must be adhered to for both facilities, roads and power lines.	N/A	N/A	Condition is no longer applicable at this stage of the project.



Ref #	Condition	Compliance Y/N	Compliance Rating	Comments/ Verification
	No impacts on valuable fossil heritage and heritage resources.	N/A	N/A	Condition is no longer applicable at this stage of the project.
	Contractor to cordon off sensitive sites	N/A	N/A	Condition is no longer applicable at this stage of the project.
6.1	Construction: Goal for Construction			
	The construction phase of the wind energy facility should be undertaken in such a way that ensures the construction activities are properly managed in respect of environmental aspects and impacts and enables the wind energy facility construction activities to be undertaken without significant disruption to other land uses in the area, in particular with regard to noise impacts, traffic and road use, and effects on local residents	N/A	N/A	Condition is no longer applicable at this stage of the project.
	The construction phase of the facility should also be undertaken in such a way as to minimise the impact on the watercourses, vegetation, fauna and avifauna on the site as well as on any archaeological and historical value the site may have, as determined by the EIA and resultant walkthrough surveys.	N/A	N/A	Condition is no longer applicable at this stage of the project.
6.2	Construction: Institutional Arrangements			
	The Proponent must ensure that the implementation of the facility complies with the requirements of any and all environmental authorisations and permits, and obligations emanating from other relevant environmental legislation. The Proponent will retain various key and facilitation roles and responsibilities during the construction of the wind energy facility; however, the EPC Contractor will be responsible for implementing the conditions of the EMPr.	N/A	N/A	Condition is no longer applicable at this stage of the project.
Construction- (a) Objective 1: Reporting, Communication, and Responsibilities				



Ref #	Condition	Compliance Y/N	Compliance Rating	Comments/ Verification
	Formal responsibilities are necessary to ensure that key procedures are executed. Specific responsibilities of the Project Manager, Site Manager, Contractor's Environmental Officer (EO)/ Environmental Representative, ECO and Contractor for the construction phase of this project are as detailed below. Formal responsibilities are necessary to ensure that key procedures are executed.	N/A	N/A	Condition is no longer applicable at this stage of the project.
6.3	Construction- Objective 2: Securing Site and Site Establishment			
	Secure site, working areas and excavations in an appropriate manner, as agreed with the Site Manager, ECO/ EO. Environmental Representative.	N/A	N/A	Condition is no longer applicable at this stage of the project.
	Where necessary to control access, fence and secure area using appropriate means, and implement access control procedures – fencing should take cognisance of farming activities, e.g. not limiting game and/or sheep and other animals from accessing water/ food (fencing should be discussed and planned in conjunction with the landowners prior to construction).	N/A	N/A	Condition is no longer applicable at this stage of the project.
	Fence and secure Contractor's equipment camp.	N/A	N/A	Condition is no longer applicable at this stage of the project.
	Develop and implement an efficient access control system which allows for the identification of all people on site.	N/A	N/A	Condition is no longer applicable at this stage of the project.
	Concrete batching plant/s to be located in areas of low sensitivity within the approved development area.	N/A	N/A	Condition is no longer applicable at this stage of the project.
	All unattended open excavations must be adequately demarcated and/or fenced (fencing shall consist of a minimum of three strands of wire wrapped with danger tape).	N/A	N/A	Condition is no longer applicable at this stage of the project.



Ref #	Condition	Compliance Y/N	Compliance Rating	Comments/ Verification
	Establish appropriately bunded areas for storage of hazardous materials (i.e. fuel to be required during construction). Bunds must be constructed in order to accommodate 110% of the volume of the substance stored.	N/A	N/A	Condition is no longer applicable at this stage of the project.
	Establish the necessary ablution facilities with chemical toilets and provide adequate sanitation facilities and ablutions for construction workers (1 toilet per every 15 workers) at appropriate locations on site.	N/A	N/A	Condition is no longer applicable at this stage of the project.
	Ablution or sanitation facilities should not be located within 100 m from a 1:100-year flood line or within 32m of a watercourse if the aforementioned is unknown.	N/A	N/A	Condition is no longer applicable at this stage of the project.
	No members of the public/ landowners injured as a result of construction activities.	N/A	N/A	Condition is no longer applicable at this stage of the project.
	Fauna and flora is protected as far as practically possible	N/A	N/A	Condition is no longer applicable at this stage of the project.
	Appropriate and adequate waste management and sanitation facilities provided at construction site.	N/A	N/A	Condition is no longer applicable at this stage of the project.
	Regular visual inspection of fence for signs of deterioration/forced access.	N/A	N/A	Condition is no longer applicable at this stage of the project.
	ECO/ EO/ Environmental Representative to monitor all construction areas on a continuous basis until all construction is completed; immediate report backs to site manager.	N/A	N/A	Condition is no longer applicable at this stage of the project.
	ECO/ EO/ Environmental Representative to address any infringements with responsible contractors as soon as these are recorded.	N/A	N/A	Condition is no longer applicable at this stage of the project.
6.3	Construction-Objective 3: Local Employment			
	Employ as many workers (skilled, semi-skilled / low-skilled) from the local area/ nearby towns as possible.	N/A	N/A	Condition is no longer applicable at this stage of the project.



Ref #	Condition	Compliance Y/N	Compliance Rating	Comments/ Verification
	Where required, implement appropriate training and skills development programmes prior to the initiation of the construction phase to ensure that local employment target is met.	N/A	N/A	Condition is no longer applicable at this stage of the project.
	Develop a database of local BBBEEE service providers and ensure that they are informed of relevant tenders and job opportunities. » Database of potential local BBBEEE services providers in place before construction phase commences.	N/A	N/A	Condition is no longer applicable at this stage of the project.
	Skills audit to be undertaken as per Renewable Energy Independent Power Producer Procurement Process (REIPPPP) Enterprise Development (ED) and Socio-Economic Development (SED) Requirements to determine training and skills development requirements.	N/A	N/A	Condition is no longer applicable at this stage of the project.
	Identify potential opportunities for local businesses.	N/A	N/A	Condition is no longer applicable at this stage of the project.
	Skills audit to determine need for training and skills development programme undertaken within 1 month of commencement of construction phase.	N/A	N/A	Condition is no longer applicable at this stage of the project.
	The proponent's Community Liaison Officer (CLO) and or appointed ECO must monitor indicators listed above to ensure that they have been met for the construction phase.	N/A	N/A	Condition is no longer applicable at this stage of the project.
Construction- Objective 4: Social Impact				
	The presence of construction workers can impact negatively on family structures and social networks, especially in small, rural communities. The presence of construction workers on the site can result in stock thefts or illegal hunting/ trapping of fauna and or game and damage to farm infrastructure.	N/A	N/A	Condition is no longer applicable at this stage of the project.
	Establish contact with the adjacent farmers and develop a Code of Conduct for construction workers. Ensure that construction workers attend a brief session before they commence activities. The aim of the briefing session is to inform them of the rules and regulations governing activities on the site as set out in the Code of Conduct.	N/A	N/A	Condition is no longer applicable at this stage of the project.



Ref #	Condition	Compliance Y/N	Compliance Rating	Comments/ Verification
	Ensure that construction workers who are found guilty of breaching the Code of Conduct are disciplined accordingly. All disciplinary hearings and/or dismissals must be in accordance with South African labour legislation.	N/A	N/A	Condition is no longer applicable at this stage of the project.
	The housing of construction workers on the site should be limited to security personnel, if required.	N/A	N/A	Condition is no longer applicable at this stage of the project.
	Compensate farmers / community members for any proven cost for any losses, such as livestock, damage to infrastructure etc.	N/A	N/A	Condition is no longer applicable at this stage of the project.
	Ensure that all farm gates are locked (when not in use) and secure (when in use) at all times, Gate Management to be discussed to the landowners prior to construction activities. The Landowner Condition including gate management must be documented in the Access and/or Gate Management Method Statements.	N/A	N/A	Condition is no longer applicable at this stage of the project.
	Inform the landowner of activity on their land as per agreed landowner construction requirements or at least two (2) days in advance of planned activities	N/A	N/A	Condition is no longer applicable at this stage of the project.
	Procedures and measures to prevent, and in worst cases, attend to fires should be developed in consultation with the surrounding property owners.	N/A	N/A	Condition is no longer applicable at this stage of the project.
	Contact details of emergency and police services should be prominently displayed on site.	N/A	N/A	Condition is no longer applicable at this stage of the project.
	Appropriate fire-fighting equipment must be present on site and members of the workforce should be appropriately trained in using this equipment in the fighting of veld fires.	N/A	N/A	Condition is no longer applicable at this stage of the project.
	Employees, visitors and/or subcontractors should be made well aware of the consequences of any damage to private property and/or loss of livestock, game and/or other fauna.	N/A	N/A	Condition is no longer applicable at this stage of the project.
	Should there be any damage to private property and/or loss of livestock, game and/or other fauna that can be linked to the Contractor, or any sub-contractor, the landowner shall be compensated accordingly upon sufficient proof thereof.	N/A	N/A	Condition is no longer applicable at this stage of the project.



Ref #	Condition	Compliance Y/N	Compliance Rating	Comments/ Verification
	Reasonable site access control should be implemented.	N/A	N/A	Condition is no longer applicable at this stage of the project.
Construction- Objective 5: Noise Control				
	Ensure as far as possible that maximum noise levels at potentially sensitive receptors be less than 65 dBA.	N/A	N/A	Condition is no longer applicable at this stage of the project.
	On-site construction activities should be limited to daylight hours as far as possible. No construction activities after 13:00 on Saturdays, Sundays and public holidays. Should construction activities need to be undertaken outside of these times, landowners need to be consulted. Where work takes place outside of normal working hours, the relevant legislation should be adhered to.	N/A	N/A	Condition is no longer applicable at this stage of the project.
	Construction staff working in areas where the 8-hour ambient noise levels exceed 75dBA must wear ear protection equipment.	N/A	N/A	Condition is no longer applicable at this stage of the project.
	Construction noise must be managed according to the Noise Control Regulations and SANS 10103. The construction crew must abide by the national standards and local by-laws, if any, regarding noise.	N/A	N/A	Condition is no longer applicable at this stage of the project.
	All construction equipment, including vehicles, must be properly and appropriately maintained in order to minimise noise generation.	N/A	N/A	Condition is no longer applicable at this stage of the project.
	Establish a line of communication and notify all stakeholders and sensitive receptors of the means of registering any issues, complaints or comments.	N/A	N/A	Condition is no longer applicable at this stage of the project.



Ref #	Condition	Compliance Y/N	Compliance Rating	Comments/ Verification
	Notify potentially sensitive receptors about work to take place at least 2 days before the activity in the vicinity (within 500 m) of the potentially sensitive receptors (PSR) is to start. The following information to be presented in writing » Description of activity to take place; » Estimated duration of activity; » Working hours; and » Contact details of responsible party.	N/A	N/A	Condition is no longer applicable at this stage of the project.
Construction- Objective 6: Dust Emissions and Roads				
	To avoid and or minimise the potential noise and dust impacts associated with heavy vehicles, and also minimise damage to roads.	N/A	N/A	Condition is no longer applicable at this stage of the project.
	To ensure emissions from all vehicles are minimised, where possible, for the duration of the construction phase.	N/A	N/A	Condition is no longer applicable at this stage of the project.
	Implement appropriate dust suppression measures on site such as wetting roads on a regular basis including during site clearing and periods of high winds (by using non-potable water as far as practically possible).	N/A	N/A	Condition is no longer applicable at this stage of the project.
	Haul vehicles moving outside the construction site carrying material that can be wind-blown should be covered with tarpaulins if determined necessary by the ECO.	N/A	N/A	Condition is no longer applicable at this stage of the project.
	Ensure vehicles adhere to speed limits on public roads and speed limits set within the site by the Site Manager/ ECO/ EO/ Environmental Representative.	N/A	N/A	Condition is no longer applicable at this stage of the project.
	Disturbed areas must be re-vegetated as soon as practicable after construction is complete in an area.	N/A	N/A	Condition is no longer applicable at this stage of the project.
	Vehicles and equipment must be maintained in a road-worthy condition at all times.	N/A	N/A	Condition is no longer applicable at this stage of the project.



Ref #	Condition	Compliance Y/N	Compliance Rating	Comments/ Verification
	Ensure that damage to gravel public roads and access roads attributable to construction vehicles use for the construction of the Soetwater Wind Farm is repaired before completion of construction phase.	N/A	N/A	Condition is no longer applicable at this stage of the project.
	Regular dust control of materials (sand, soil, concrete) must be used at concrete batching plants on site.	N/A	N/A	Condition is no longer applicable at this stage of the project.
	Strictly control vibration pollution from compaction plant or excavation plant as far as practically possible	N/A	N/A	Condition is no longer applicable at this stage of the project.
	Disturbed areas must be re-vegetated as soon as practicable.	N/A	N/A	Condition is no longer applicable at this stage of the project.
	If monitoring results or complaints indicate inadequate performance against the criteria indicated, then the source of the problem will be identified, and existing procedures or equipment modified to ensure the problem is rectified.	N/A	N/A	Condition is no longer applicable at this stage of the project.
	Road worthy certificates in place for all heavy vehicles at outset of construction phase and updated on a monthly basis.	N/A	N/A	Condition is no longer applicable at this stage of the project.
Construction-Objective 7: Soil Management and Erosion Control				
	Stockpile topsoil separately from subsoil for re-use in rehabilitation phase. Maintain stockpile shape and protect from erosion. All stockpiles must be positioned at least 50 m away from drainage lines. Limit the height of stockpiles to 2m as far as possible to reduce compaction.	N/A	N/A	Condition is no longer applicable at this stage of the project.
	New access roads to be carefully planned and constructed to minimise the impacted area and prevent unnecessary excavation, placement and compaction of soil.	N/A	N/A	Condition is no longer applicable at this stage of the project.
	Identify and demarcate construction areas for general construction work and restrict construction activity to these areas.	N/A	N/A	Condition is no longer applicable at this stage of the project.
	Rehabilitate disturbance areas as soon as construction in an area is completed, if practically and logistically possible.	N/A	N/A	Condition is no longer applicable at this stage of the project.



Ref #	Condition	Compliance Y/N	Compliance Rating	Comments/ Verification
	Stockpiles not used in three (3) months after stripping must be seeded or appropriately covered to prevent dust and erosion - only if natural seeding does not occur.	N/A	N/A	Condition is no longer applicable at this stage of the project.
	Erosion control measures: Implement run-off attenuation on slopes (sandbags, logs), silt fences, stormwater catch-pits, shade nets or temporary mulching over denuded areas.	N/A	N/A	Condition is no longer applicable at this stage of the project.
	Particular care should be taken in the design of road drainage line crossings in order to ensure there is no step in the channel bed, substrate continuity is maintained, and no undue constriction of flow takes place.	N/A	N/A	Condition is no longer applicable at this stage of the project.
	Where access roads cross natural drainage lines, culverts (or other appropriate measures) must be designed to allow free flow. Regular maintenance of the culverts must be carried out.	N/A	N/A	Condition is no longer applicable at this stage of the project.
	Control depth of all excavations and stability of cut faces/sidewalls.	N/A	N/A	Condition is no longer applicable at this stage of the project.
	Compile a comprehensive stormwater management plan as part of the final design of the project and implement during construction and operation (refer to Appendix H).	N/A	N/A	Condition is no longer applicable at this stage of the project.
	Cement/Concrete batching to take place in designated areas only, as detailed on the approved facility layout map (if applicable).	N/A	N/A	Condition is no longer applicable at this stage of the project.
	Spillages of cement/concrete to be cleaned up immediately and disposed of.	N/A	N/A	Condition is no longer applicable at this stage of the project.
	Spill kits to be kept on active parts of the construction site & at site offices.	N/A	N/A	Condition is no longer applicable at this stage of the project.
	Soil erosion control measures (such as hessian mats and gabions) be used for in erosion prone areas such as steep slopes.	N/A	N/A	Condition is no longer applicable at this stage of the project.
	Storm water Management Plan to be updated and implemented as soon as the designs have been finalised.	N/A	N/A	Condition is no longer applicable at this stage of the project.
	Daily monitoring for the water crossing construction period.	N/A	N/A	Condition is no longer applicable at this stage of the project.



Ref #	Condition	Compliance Y/N	Compliance Rating	Comments/ Verification
Construction-Objective 8: Protection of drainage lines/ watercourse				
	Minimise damage to watercourse areas where crossing will be built.	N/A	N/A	Condition is no longer applicable at this stage of the project.
	No increase in runoff into drainage lines as a result of construction of project related infrastructure	N/A	N/A	Condition is no longer applicable at this stage of the project.
	Align underground cables and internal access roads as far as possible along existing infrastructure and disturbances, e.g. within the internal access road construction corridor.	N/A	N/A	Condition is no longer applicable at this stage of the project.
	For any new construction where direct impacts on drainage lines are unavoidable cross watercourses perpendicularly to minimise disturbance footprints.	N/A	N/A	Condition is no longer applicable at this stage of the project.
	Rehabilitate any disturbed areas as soon as possible once construction is completed in an area.	N/A	N/A	Condition is no longer applicable at this stage of the project.
	Infrastructure (bridges or culverts) must not be placed within drainage line channels but should span them completely	N/A	N/A	Condition is no longer applicable at this stage of the project.
	Obtain required water use license/ GA for impacting on drainage lines (if applicable).	N/A	N/A	Condition is no longer applicable at this stage of the project.
	Construction must not result in the width of the watercourse being narrowed.	N/A	N/A	Condition is no longer applicable at this stage of the project.
	Control storm water and runoff water through the implementation of a storm water management plan for the site (refer to Appendix G).	N/A	N/A	Condition is no longer applicable at this stage of the project.
	Contaminated runoff from the construction site(s) should be prevented from entering the rivers/streams.	N/A	N/A	Condition is no longer applicable at this stage of the project.
	Ablution facilities at the construction sites, i.e. outside the construction camp must be located at least 100m away from drainage lines and regularly serviced.	N/A	N/A	Condition is no longer applicable at this stage of the project.
	Concrete batching plants and stockpiles to be located more than 50m away from drainage lines wherever practically possible. If not possible, the ECO/ EO/ Environmental Representative must be consulted to ensure the relevant mitigation measures are implemented.	N/A	N/A	Condition is no longer applicable at this stage of the project.



Ref #	Condition	Compliance Y/N	Compliance Rating	Comments/ Verification
	Utilise erosion control measures on access roads, wetland areas and drainage lines.	N/A	N/A	Condition is no longer applicable at this stage of the project.
	Capture runoff from roofs in rainwater tanks or disperse runoff from impervious surfaces onto adjacent areas.	N/A	N/A	Condition is no longer applicable at this stage of the project.
Construction-Objective 9: Protection of indigenous vegetation/control of alien invasive plants				
	All protected plants that occur on access routes and turbine sites will be affected by the development and permits from the relevant authority (Northern Cape Nature Conservation) should be obtained for these species prior to any form of disturbance.	N/A	N/A	Condition is no longer applicable at this stage of the project.
	Remove and store all topsoil on areas that are to be excavated wherever practically possible; and use this topsoil in subsequent rehabilitation of disturbed areas;	N/A	N/A	Condition is no longer applicable at this stage of the project.
	Unnecessary impacts on surrounding natural vegetation must be avoided, e.g. driving around in the veld. The construction impacts must be contained to the footprint of the infrastructure.	N/A	N/A	Condition is no longer applicable at this stage of the project.
	Keep disturbance of indigenous vegetation to a minimum and rehabilitate disturbed areas as quickly as possible	N/A	N/A	Condition is no longer applicable at this stage of the project.
	No importing of soil from areas with alien plants	N/A	N/A	Condition is no longer applicable at this stage of the project.
	Internal access roads and cables should be aligned as far as possible along existing linear disturbances, e.g. access road corridors on site and away from steep slopes and drainage lines as much as possible. Where new roads are to be constructed, these should follow existing tracks or disturbed areas or the edges of disturbed areas as far as possible.	N/A	N/A	Condition is no longer applicable at this stage of the project.
	Identify and demarcate areas within which activities are to be undertaken. Ensure that activities are restricted to these areas to ensure unnecessary impacts on surrounding natural vegetation are avoided.	N/A	N/A	Condition is no longer applicable at this stage of the project.



Ref #	Condition	Compliance Y/N	Compliance Rating	Comments/ Verification
	Establish an on-going monitoring programme to detect, quantify and remove any alien species that may become established and identify the problem species (as per Conservation of Agricultural Resources Act, Act 43 of 1983 and NEM: Biodiversity Act).	N/A	N/A	Condition is no longer applicable at this stage of the project.
	Control any alien plants that become established using registered control methods.	N/A	N/A	Condition is no longer applicable at this stage of the project.
	Salvaging topsoil: Topsoil must always be salvaged and stored separately from subsoil and lower-lying parent rock or other spoil material. Topsoil stripping removes up to 30 cm or less of the upper soils. In cultivated areas, depth of topsoil may increase and needs to be confirmed with the landowner	N/A	N/A	Condition is no longer applicable at this stage of the project.
	Prior to salvaging topsoil, the depth, quality and characteristics of topsoil should be known for every management area. This will give an indication of total volumes of topsoil that need to be stored to enable the proper planning and placement of topsoil storage.	N/A	N/A	Condition is no longer applicable at this stage of the project.
	Different types of topsoil – rocky soils and sands or loams must be stored separately	N/A	N/A	Condition is no longer applicable at this stage of the project.
	Topsoil should be removed (and stored) under dry conditions to avoid excessive compaction whenever topsoil will have to be stored for longer than one year.	N/A	N/A	Condition is no longer applicable at this stage of the project.
	Storing topsoil: Viability of stored topsoil depends on moisture, temperature, oxygen, nutrients and time stored	N/A	N/A	Condition is no longer applicable at this stage of the project.
	Rapid decomposition of organic material in warm, moist topsoil rapidly decreases microbial activity necessary for nutrient cycling and reduces the amount of beneficial micro-organisms in the soil.	N/A	N/A	For information to the contractor
	Stockpile location, if not adjacent to a linear development: At least 50 m from any watering point, ideally a disturbed but weed-free area.	N/A	N/A	Condition is no longer applicable at this stage of the project.



Ref #	Condition	Compliance Y/N	Compliance Rating	Comments/ Verification
	Topsoil is typically stored in berms with a width of 150 – 200 cm, and a maximum height of 2m: Place berms along contours or perpendicular to the prevailing wind direction. Adhere to the following general rule: the larger the pile of topsoil storage needs to be, the shorter should be the time it is stored	N/A	N/A	Condition is no longer applicable at this stage of the project.
	Topsoil handling should be reduced to stripping, piling (once), and re-application. Between the stockpiling and reapplication, stored topsoil should not undergo any further handling except control of erosion and (alien) invasive vegetation	N/A	N/A	Condition is no longer applicable at this stage of the project.
	Where topsoil can be reapplied within six months to one year after excavation, it will be useful to store the topsoil as close as possible to the area of excavation and re-application, e.g. next to cabling trenches	N/A	N/A	Condition is no longer applicable at this stage of the project.
	In such case, use one side of the linear development for machinery and access only	N/A	N/A	Condition is no longer applicable at this stage of the project.
	Place topsoil on the other/far side of this development, followed by the subsoil (e.g. on geotextile)	N/A	N/A	Condition is no longer applicable at this stage of the project.
	In cases where topsoil has to be stored longer than 6 months or during the rainy season, soils should be kept as dry as possible and protected from erosion and degradation by: -Preventing puddling on or between heaps of topsoil -Or covering topsoil berms -Preventing all forms of contamination or pollution -Preventing any form of compaction -Monitoring establishment of all invasive vegetation and removing such if it appears -Keeping slopes of topsoil at a maximal 2:1 ratio -Monitoring and mitigating erosion where it appear -Where topsoil needs to be stored in excess of more than 6 months, it is recommended to either cover the topsoil or allow an indigenous grass cover to grow on it – if this does not happen spontaneously, seeding should be considered. This must be implemented only after consultation with the ECO.	N/A	N/A	Condition is no longer applicable at this stage of the project.



Ref #	Condition	Compliance Y/N	Compliance Rating	Comments/ Verification
	<p>Storing topsoil:</p> <ul style="list-style-type: none"> -Viability of stored topsoil depends on moisture, temperature, oxygen, nutrients and time stored. -Rapid decomposition of organic material in warm, moist topsoil rapidly decreases microbial activity necessary for nutrient cycling and reduces the amount of beneficial micro-organisms in the soil. -Stockpile location, if not adjacent to a linear development: <ul style="list-style-type: none"> -At least 50 m from any watering point -Ideally a disturbed but weed-free area -Topsoil is typically stored in berms with a width of 150 – 200 cm, and a maximum height of 2m: <ul style="list-style-type: none"> -Place berms along contours or perpendicular to the prevailing wind direction -Adhere to the following general rule: the larger the pile of topsoil storage needs to be, the shorter should be the time it is stored -Topsoil handling should be reduced to stripping, piling (once), and re-application. Between the stockpiling and reapplication, stored topsoil should not undergo any further handling except control of erosion and (alien) invasive vegetation -Where topsoil can be reapplied within six months to one year after excavation, it will be useful to store the topsoil as close as possible to the area of excavation and re-application, e.g. next to cabling trenches,-In such case, use one side of the linear development for machinery and access only -Place topsoil on the other/far side of this development, followed by the subsoil (e.g. on geotextile) -In cases where topsoil has to be stored longer than 6 months or during the rainy season, soils should be kept as dry as possible and protected from erosion and degradation by: <ul style="list-style-type: none"> -Preventing puddling on or between heaps of topsoil -Or covering topsoil berms -Preventing all forms of contamination or pollution -Preventing any form of compaction -Monitoring establishment of all invasive vegetation and removing such if it appears -Keeping slopes of topsoil at a maximal 2:1 ratio -Monitoring and mitigating erosion where it appears 	N/A	N/A	Condition is no longer applicable at this stage of the project.



Ref #	Condition	Compliance Y/N	Compliance Rating	Comments/ Verification
	-Where topsoil needs to be stored in excess of more than 6 months, it is recommended to either cover the topsoil or allow an indigenous grass cover to grow on it – if this does not happen spontaneously, seeding should be considered. This must be implemented only after consultation with the ECO.			
	Continued monitoring will be necessary to detect any sign of erosion early enough to allow timeous mitigation	N/A	N/A	Condition is no longer applicable at this stage of the project.
	Re-applied topsoil needs to be re-vegetated as soon as possible, following the specifications of the revegetation and rehabilitation plan (refer to Appendix E)	N/A	N/A	Condition is no longer applicable at this stage of the project.
Construction-Objective 10: Protection of fauna & avifauna				
	The extent of clearing and disturbance to the native vegetation must be kept to a minimum so that impact on fauna and their habitats is restricted.	N/A	N/A	Condition is no longer applicable at this stage of the project.
	Should any animals be found these should be relocated prior to construction, the ECO/ EO/ Environmental Representative should first be consulted to ensure that no permits are required for relocation. If permits are required these must first be obtained.	N/A	N/A	Condition is no longer applicable at this stage of the project.
	No poaching or hunting of wildlife on site during construction	N/A	N/A	Condition is no longer applicable at this stage of the project.
	The site Rehabilitation Programme should be implemented (refer to Appendix E).	N/A	N/A	Condition is no longer applicable at this stage of the project.
	No animals are to be harmed or killed. Employees should be trained (e.g. during toolbox talks) that poisonous animals should not be killed and if encountered the ECO/ EO/ Environmental Representative should be informed.	N/A	N/A	Condition is no longer applicable at this stage of the project.



Ref #	Condition	Compliance Y/N	Compliance Rating	Comments/ Verification
	The ECO/ EO/ Environmental Representative must have the required Competency Certificates, received from the attendance of a Reptile Husbandry and Handling Course as there may be many poisonous snakes to be moved. Alternatively, if any poisonous animals are encountered on site, they should either be allowed sufficient space and time to relocate, or a relevantly qualified person must be contacted to remove/relocate the animal. Employees must be prohibited from harvesting wild plants for any purpose	N/A	N/A	Condition is no longer applicable at this stage of the project.
	Active breeding in the immediate surroundings must be monitored during construction by the ECO/EO/ Environmental Representative. Should any bird nests be found that are likely to be disturbed by construction activities, these should then be relocated, or other mitigations should be discussed with the avifaunal specialist.	N/A	N/A	Condition is no longer applicable at this stage of the project.
Construction-Objective 11: Protection of heritage and archaeological sites				
	The stone walls must be recorded in detail and a destruction permit for portions of the dry packed stone walls on the Farm Standvastigheid 210 must be applied for to continue upgrade of the detour road south of the Saaiplaas farmstead	N/A	N/A	Condition is no longer applicable at this stage of the project.
	The ECO/ EO/ Environmental Representative for the project should be well versed before construction starts on the possible types of heritage sites/materials they may encounter and the procedures to follow when they find sites. They should be trained by the Heritage Specialist to identify, follow the relevant procedure and report to the site manager if sites are found.	N/A	N/A	Condition is no longer applicable at this stage of the project.
	If a heritage object is found, work in that area must be stopped immediately, and appropriate specialists brought in to assess to site, notify the administering authority of the item/site, and undertake due/required processes.	N/A	N/A	Condition is no longer applicable at this stage of the project.



Ref #	Condition	Compliance Y/N	Compliance Rating	Comments/ Verification
	The existing access road on the Farm De Hoop 202 would need to be at least 30 m from any sensitive heritage features at the HVDVS table and HVDHOLD Farmstead Complex.	N/A	N/A	Condition is no longer applicable at this stage of the project.
	If at any stage during the construction phase any semblance of a fossil were to be observed, it would be vital to recover the fossil and report the occurrence to the geological staff at the closest repository in the Northern Cape and/or the South African Heritage Resources Agency (SAHRA) (021 642 4502) so that systematic and professional investigation/ excavation can be undertaken.	N/A	N/A	Condition is no longer applicable at this stage of the project.
	If concentrations of archaeological materials are exposed during construction, then all work must stop for an archaeologist to investigate.	N/A	N/A	Condition is no longer applicable at this stage of the project.
	If any human remains (or any other concentrations of archaeological heritage material) are exposed during construction, all work in the immediate area affecting the find, must cease and it must be reported immediately to the nearest museum/archaeologist or to the South African Heritage Resources Agency, so that a systematic and professional investigation can be undertaken. Sufficient time should be allowed to investigate and to remove/collect such material.	N/A	N/A	Condition is no longer applicable at this stage of the project.
	The ECO/ EO /Environmental Representative for the project should be alerted to the potential for, and scientific significance of, new fossil finds during the construction phase of the development. They should familiarise themselves with the sort of fossils concerned through museum displays and accessible, well-illustrated literature.	N/A	N/A	Condition is no longer applicable at this stage of the project.
Construction-Objective 12: Visual impacts associated with construction				
	The general appearance of construction activities, construction equipment camps and lay-down areas must be maintained and kept neat and tidy by means of the timely removal of rubble and disused construction materials.	N/A	N/A	Condition is no longer applicable at this stage of the project.



Ref #	Condition	Compliance Y/N	Compliance Rating	Comments/ Verification
	Reduce visual disturbances by minimising areas of surface disturbance, controlling erosion, using dust suppression techniques and restoring exposed soil as close as possible to their original contour and vegetation	N/A	N/A	Condition is no longer applicable at this stage of the project.
	Limit access to the construction sites (during both construction and operational phases) along existing access roads as far as possible.	N/A	N/A	Condition is no longer applicable at this stage of the project.
	Vehicle movements on local roads must be limited to standard construction operating hours wherever possible to limit noise impacts and dust nuisance.	N/A	N/A	Condition is no longer applicable at this stage of the project.
	Times for arrival and departure of heavy vehicles must be co-ordinated as far as possible in order to minimise congestion.	N/A	N/A	Condition is no longer applicable at this stage of the project.
	The movement of all vehicles within the site must be on designated roadways.	N/A	N/A	Condition is no longer applicable at this stage of the project.
	Signage must be established at appropriate points warning of turning traffic and the construction site (all signage to be in accordance with prescribed standards and must be managed on an ongoing basis).	N/A	N/A	Condition is no longer applicable at this stage of the project.
	All vehicles travelling on public roads must adhere to the specified speed limits and all drivers must be in possession of an appropriate valid driver's license.	N/A	N/A	Condition is no longer applicable at this stage of the project.
	Ensure all disturbed areas are appropriately rehabilitated once construction in an area is complete.	N/A	N/A	Condition is no longer applicable at this stage of the project.
Construction-Objective 13: Hazardous Substance Management				
	An effective monitoring system must be implemented during the construction phase to detect any leakage or spillage of hazardous substances during their transportation, handling, use and storage.	N/A	N/A	Condition is no longer applicable at this stage of the project.



Ref #	Condition	Compliance Y/N	Compliance Rating	Comments/ Verification
	The storage of flammable and combustible liquids such as oils must be in designated areas which are appropriately bunded and stored in compliance with Material Safety Data Sheets (MSDS) files.	N/A	N/A	Condition is no longer applicable at this stage of the project.
	Any spills must receive the necessary clean-up action. Bioremediation kits must be kept on-site and used to remediate any spills that may occur. Appropriate arrangements to be made for appropriate collection and disposal of all cleaning materials, absorbents and contaminated soils (in accordance with a waste management plan- refer to Appendix J).	N/A	N/A	Condition is no longer applicable at this stage of the project.
	Any storage and disposal permits/approvals which may be required must be obtained, and the conditions attached to such permits and approvals will be complied with.	N/A	N/A	Condition is no longer applicable at this stage of the project.
	Routine servicing and maintenance of vehicles is not to take place on-site (except for emergency situations or large cranes which cannot be moved off-site). If repairs of vehicles must take place on site, e.g. during emergencies, an appropriate drip tray must be used to contain any fuel or oils.	N/A	N/A	Condition is no longer applicable at this stage of the project.
	Transport of all hazardous substances must be in accordance with the relevant legislation and regulations.	N/A	N/A	Condition is no longer applicable at this stage of the project.
	Waste disposal records must be available for ECO review at all times.	N/A	N/A	Condition is no longer applicable at this stage of the project.
	Construction contractors must provide specific detailed waste management plans to deal with all waste streams.	N/A	N/A	Condition is no longer applicable at this stage of the project.
	Specific areas must be designated on-site for the temporary management of various waste streams, i.e. general refuse, construction waste (wood and metal scrap) and contaminated waste. Location of such areas must seek to minimise the potential for impact on the surrounding environment, including prevention of contaminated runoff, seepage and vermin control.	N/A	N/A	Condition is no longer applicable at this stage of the project.



Ref #	Condition	Compliance Y/N	Compliance Rating	Comments/ Verification
	Where possible, construction and general wastes on-site must be reused or recycled. Bins and skips must be available on-site for collection, separation and storage of waste streams (such as wood, metals, general refuse etc.).	N/A	N/A	Condition is no longer applicable at this stage of the project.
	Disposal of waste must be in accordance with relevant legislative requirements, including the use of licensed contractors and licensed waste disposal sites.	N/A	N/A	Condition is no longer applicable at this stage of the project.
	Hydrocarbon waste must be contained and stored in sealed containers within an appropriately bunded area.	N/A	N/A	Condition is no longer applicable at this stage of the project.
	Waste and surplus dangerous goods must be kept to a minimum and must be transported by approved waste transporters to sites designated for their disposal.	N/A	N/A	Condition is no longer applicable at this stage of the project.
	Documentation (waste manifest) must be maintained detailing the quantity, nature and fate of any hazardous waste.	N/A	N/A	Condition is no longer applicable at this stage of the project.
	An incident/complaints register must be established and maintained on-site.	N/A	N/A	Condition is no longer applicable at this stage of the project.
	Hazardous and non-hazardous waste must be separated at source. Separate waste collection bins must be provided for this purpose. These bins must be clearly marked and appropriately covered.	N/A	N/A	Condition is no longer applicable at this stage of the project.
	All solid waste collected must be disposed of at a registered waste disposal site. A certificate of disposal must be obtained and kept on file. The disposal of waste must be in accordance with all relevant legislation. Under no circumstances may solid waste be burnt or buried on site.	N/A	N/A	Condition is no longer applicable at this stage of the project.
	Supply waste collection bins at construction equipment and construction crew camps.	N/A	N/A	Condition is no longer applicable at this stage of the project.
	Construction equipment must be refuelled within designated refuelling locations, or where remote refuelling is required, appropriate drip trays must be utilised.	N/A	N/A	Condition is no longer applicable at this stage of the project.



Ref #	Condition	Compliance Y/N	Compliance Rating	Comments/ Verification
	All stored fuels to be maintained within a bund and on a sealed surface.	N/A	N/A	Condition is no longer applicable at this stage of the project.
	Fuel storage areas must be inspected regularly to ensure bund stability, integrity and function.	N/A	N/A	Condition is no longer applicable at this stage of the project.
	Construction machinery must be stored in an appropriately sealed area.	N/A	N/A	Condition is no longer applicable at this stage of the project.
	Oily water from bunds at the substation must be removed from site by licensed contractors.	N/A	N/A	Condition is no longer applicable at this stage of the project.
	Spilled cement/concrete must be cleaned up as soon as possible and disposed of at a suitably licensed waste disposal site.	N/A	N/A	Condition is no longer applicable at this stage of the project.
	Corrective action must be undertaken immediately if a complaint is made, or potential/actual leak or spill of polluting substance identified. This includes stopping the contaminant from further escaping, cleaning up the affected environment as much as practically possible and implementing preventive measures.	N/A	N/A	Condition is no longer applicable at this stage of the project.
	In the event of a major spill or leak of contaminants, the relevant administering authority must be immediately notified as per the notification of emergencies/incidents. Spill kits to be kept on-site.	N/A	N/A	Condition is no longer applicable at this stage of the project.
	Any contaminated/polluted soil removed from the site must be disposed of at a licensed hazardous waste disposal facility.	N/A	N/A	Condition is no longer applicable at this stage of the project.
	Upon the completion of construction, the area will be cleared of potentially polluting materials.	N/A	N/A	Condition is no longer applicable at this stage of the project.
	Supply adequate weather and vermin proof waste collection bins and skips (covered at minimum with secured netting or shade cloth) at site where construction is being undertaken. Separate labelled bins should be provided for general and hazardous waste. As far as possible, provision should be made for separation of waste for recycling.	N/A	N/A	Condition is no longer applicable at this stage of the project.



Ref #	Condition	Compliance Y/N	Compliance Rating	Comments/ Verification
	All work sites must be kept free of waste. No solid waste may be burned or buried on site or disposed of by any other method on site or within quarries or borrows pits. Solid waste (general waste) to be disposed of at the nearest municipal landfill site. Slips of disposal to be retained as proof of responsible disposal.	N/A	N/A	Condition is no longer applicable at this stage of the project.
	Liquid waste: No liquid waste, including grey water, may be discharged into any water body or drainage line. All sewage disposal to take place at a registered and operational wastewater treatment works. Slips of disposal to be retained as proof of responsible disposal; Hazardous substances and hazardous waste: Ensure compliance with all national, regional and local legislation with regard to the storage, handling and disposal of hydrocarbons, chemicals, solvents and any other harmful and hazardous substances and materials	N/A	N/A	Condition is no longer applicable at this stage of the project.
	The onus is on the Contractor to identify and interpret the applicable legislation. Hazardous waste to be disposed of at a registered h:H or H:H landfill site. Depending on the classification of the waste, a registered service provider with the necessary permits is to collect, transport and dispose of hazardous waste. Proof of appropriate disposal to be provided to the ECO	N/A	N/A	Condition is no longer applicable at this stage of the project.
	Keep a record of all hazardous substances stored on site for submission to the ECO. Clearly label all the containers storing hazardous waste.	N/A	N/A	Condition is no longer applicable at this stage of the project.
	An effective monitoring system must be put in place to detect any leakage or spillage of all hazardous substances during their transportation, handling, installation and storage.	N/A	N/A	Condition is no longer applicable at this stage of the project.
	Precautions must be in place to limit the possibility of oil and other toxic liquids from entering the soil or clean stormwater system.	N/A	N/A	Condition is no longer applicable at this stage of the project.
	Implement an integrated waste management approach that is based on waste minimisation and incorporates reduction, recycling, re-use and disposal where appropriate.	N/A	N/A	Condition is no longer applicable at this stage of the project.



Ref #	Condition	Compliance Y/N	Compliance Rating	Comments/ Verification
	Upon the completion of construction, the area must be cleared of potentially polluting materials. Spoil stockpiles must also be removed and appropriately disposed of or the material re-used for an appropriate purpose.	N/A	N/A	Condition is no longer applicable at this stage of the project.
Construction-Objective 14: Discipline conduct on site				
	Contractors must use chemical toilets/ablution facilities situated at designated areas of the site; no abluting must be permitted outside the designated area. These facilities must be regularly serviced by appropriate contractors. Ablution facilities must not be placed within 50m from any river or drainage line.	N/A	N/A	Condition is no longer applicable at this stage of the project.
	Cooking must take place in a designated area. No firewood or kindling may be gathered from the site or surrounds.	N/A	N/A	Condition is no longer applicable at this stage of the project.
	All litter must be deposited in a clearly marked, closed, animal-proof disposal bin in the construction area; particular attention needs to be paid to food waste.	N/A	N/A	Condition is no longer applicable at this stage of the project.
	No one must disturb flora or fauna outside of the demarcated construction area/s.	N/A	N/A	Condition is no longer applicable at this stage of the project.
Construction-Objective 15: Fire Management				
	No open fires for cooking or heating must be allowed on site.	N/A	N/A	Condition is no longer applicable at this stage of the project.
	Provide adequate fire-fighting equipment on-site.	N/A	N/A	Condition is no longer applicable at this stage of the project.
	Provide fire-fighting training to selected construction staff.	N/A	N/A	Condition is no longer applicable at this stage of the project.
	Compensate farmers / community members at full market related replacement cost for any losses due to the wind energy facility project, such as livestock, damage to infrastructure etc. as a result of fires that can be directly attributed to construction activities.	N/A	N/A	Condition is no longer applicable at this stage of the project.



Ref #	Condition	Compliance Y/N	Compliance Rating	Comments/ Verification
	Designated areas for fires identified on site at the outset of the construction phase.	N/A	N/A	Condition is no longer applicable at this stage of the project.
Construction-Objective 16: Traffic Management				
	Develop and implement a traffic management plan (Refer to Appendix F).	N/A	N/A	Condition is no longer applicable at this stage of the project.
	Existing road infrastructure must be used as far as possible for providing access to the proposed turbine positions. Where no road infrastructure exist, new roads should be placed within existing disturbed areas or environmental conditions must be taken into account to ensure the minimum amount of damage is caused to natural habitats	N/A	N/A	Condition is no longer applicable at this stage of the project.
	Internal roads must be located to minimize stream crossings. All structures crossing streams must be located and constructed so that they do not decrease channel stability or increase water velocity.	N/A	N/A	Condition is no longer applicable at this stage of the project.
	All relevant permits for abnormal loads must be applied for from the relevant authority.	N/A	N/A	Condition is no longer applicable at this stage of the project.
	A designated access (or accesses) to the proposed site must be created to ensure safe entry and exit.	N/A	N/A	Condition is no longer applicable at this stage of the project.
	Appropriate road management strategies must be Implemented on external and internal roads with all employees and contractors required to abide by standard road and safety procedures.	N/A	N/A	Condition is no longer applicable at this stage of the project.
	Any traffic delays because of construction traffic must be co-ordinated with the appropriate authorities.	N/A	N/A	Condition is no longer applicable at this stage of the project.
	Signage must be established at appropriate points warning of turning traffic and the construction site (all signage to be in accordance with prescribed standards). Signage must be maintained on an on-going basis.	N/A	N/A	Condition is no longer applicable at this stage of the project.
	Appropriate maintenance of all vehicles must be ensured.	N/A	N/A	Condition is no longer applicable at this stage of the project.



Ref #	Condition	Compliance Y/N	Compliance Rating	Comments/ Verification
	Signs must be placed along construction roads to identify speed limits, travel restrictions, and other standard traffic control information. All vehicles travelling on public roads must adhere to the specified speed limits and all drivers must be in possession of an appropriate valid driver's license.	N/A	N/A	Condition is no longer applicable at this stage of the project.
	Keep hard road surfaces as narrow as possible.	N/A	N/A	Condition is no longer applicable at this stage of the project.
	Construction vehicles carrying material to the site should avoid using roads through densely populated built-up areas.	N/A	N/A	Condition is no longer applicable at this stage of the project.
	The movement of all vehicles within the site must be on designated roadways.	N/A	N/A	Condition is no longer applicable at this stage of the project.
	All hazardous substances must be transported in accordance with the relevant legislation and regulations.	N/A	N/A	Condition is no longer applicable at this stage of the project.
	Road borders should be regularly maintained to ensure that vegetation remains short and that they therefore serve as an effective firebreak.	N/A	N/A	Condition is no longer applicable at this stage of the project.
	Roads must be designed so that changes to surface water runoff are avoided and erosion is not initiated.	N/A	N/A	Condition is no longer applicable at this stage of the project.
Construction-Objective 17: Batching Plants				
	Where possible concrete batching plants should be sited such that impacts on the environment or the amenity of the local community from noise, odour or polluting emissions are minimised	N/A	N/A	Condition is no longer applicable at this stage of the project.
	The provision of natural or artificial wind barriers such as trees, fences and landforms may help control the emission of dust from the plant.	N/A	N/A	Condition is no longer applicable at this stage of the project.
	Where there is a regular movement of vehicles. Access and exit routes for heavy transport vehicles should be planned to minimise noise and dust impacts on the environment	N/A	N/A	Condition is no longer applicable at this stage of the project.



Ref #	Condition	Compliance Y/N	Compliance Rating	Comments/ Verification
	The concrete batching plant site should demonstrate good maintenance practices, including regular sweeping to prevent dust build-up	N/A	N/A	Condition is no longer applicable at this stage of the project.
	The prevailing wind direction should be considered to ensure that bunkers and conveyors are sited in a sheltered position to minimise the effects of the wind.	N/A	N/A	Condition is no longer applicable at this stage of the project.
	Aggregate material should be delivered in a damp condition, and water sprays or a dust suppression agent should be correctly applied to reduce dust emissions and reduce water usage	N/A	N/A	Condition is no longer applicable at this stage of the project.
	Conveyors must be designed and constructed to prevent fugitive dust emissions. This may include covering the conveyor with a roof, installing side protection barriers and equipping the conveyor with spill trays, which direct material to a collection point. Belt cleaning devices at the conveyor head may also assist to reduce spillage	N/A	N/A	Condition is no longer applicable at this stage of the project.
	The site should be designed and constructed such that clean stormwater, including roof runoff, is diverted away from contaminated areas and directed to the stormwater discharge system.	N/A	N/A	Condition is no longer applicable at this stage of the project.
	Any liquids stored on site, including admixtures, fuels and lubricants, should be stored in accordance with applicable legislation	N/A	N/A	Condition is no longer applicable at this stage of the project.
	Contaminated stormwater and process wastewater should be captured and recycled where possible. A wastewater collection and recycling system should be designed to collect contaminated water.	N/A	N/A	Condition is no longer applicable at this stage of the project.
	Process wastewater and contaminated stormwater collected from the entire site should be diverted to a settling pond, or series of ponds, such that the water can be reused in the concrete batching process. The settling pond or series of ponds should be lined with an impervious liner capable of containing all contaminants found within the water they are designed to collect	N/A	N/A	Condition is no longer applicable at this stage of the project.



Ref #	Condition	Compliance Y/N	Compliance Rating	Comments/ Verification
	Areas where spills of oils and chemicals may occur should be equipped with easily accessible spill control kits to assist in prompt and effective spill control	N/A	N/A	Condition is no longer applicable at this stage of the project.
	Ensure that all practicable steps are taken to minimise the adverse effect that noise emissions. This responsibility includes not only the noise emitted from the plant and equipment but also associated noise sources, such as radios, loudspeakers and alarms	N/A	N/A	Condition is no longer applicable at this stage of the project.
	Where possible, waste concrete should be used for construction purposes at the batching plant or project site.	N/A	N/A	Condition is no longer applicable at this stage of the project.
	The batching plant should be monitored by the ECO/EO/Environmental Representative to ensure that the plant is operating according to its environmental objectives and within legislative requirements.	N/A	N/A	Condition is no longer applicable at this stage of the project.
6.4	Construction-Objective 18: Method Statements			
	Method Statements must be compiled for all activities which affect any aspect of the environment and should be applied consistently to all activities.-Site establishment; Preparation of the site i.e. clearing vegetation; Soil management/stockpiling and erosion control; Excavations and backfilling procedure; Batching procedures; Stipulate norms and standards for water supply and usage-comply strictly to licence and legislation requirements and restrictions);storm water management procedures; Ablution facilities; Solid Waste Management; Liquid waste management; Dust and noise pollution; Hazardous substance storage; Fire prevention and management measures on site; Fauna and flora protection; Rehabilitation and re-vegetation process; Incident and accident reporting protocol;» General administration; Designate access road and gate control protocols.	N/A	N/A	Condition is no longer applicable at this stage of the project.
	The Contractor may not commence the activity covered by the Method Statement until it has been provided to, reviewed and accepted by the Site Manager /Project Manager and/or ECO, except in the case of emergency activities and then only with the consent of the Site Manager.	N/A	N/A	Condition is no longer applicable at this stage of the project.



Ref #	Condition	Compliance Y/N	Compliance Rating	Comments/ Verification
6.5	Construction-Objective 19			
	All employees must have a basic understanding of the key environmental features of the construction site and the surrounding environment	N/A	N/A	Condition is no longer applicable at this stage of the project.
	The content and requirements of Method Statements are to be clearly explained to all plant operators and general workers	N/A	N/A	Condition is no longer applicable at this stage of the project.
	Ensuring that a copy of the EMPr is readily available on-site, and that all site staff are aware of the location and have access to the document	N/A	N/A	Condition is no longer applicable at this stage of the project.
	Senior site staff will be familiar with the requirements of the EMPr and the environmental specifications as they apply to the construction of the facility	N/A	N/A	Condition is no longer applicable at this stage of the project.
	Employees must undergo training for the operation and maintenance activities associated with a wind energy facility and have a basic knowledge of the potential environmental impacts that could occur and how they can be minimised and mitigated	N/A	N/A	Condition is no longer applicable at this stage of the project.
	Ensuring that, prior to commencing any site works, all employees and sub-contractors have attended an Environmental Awareness Training course which can be done by the contractor's environmental representative or the ECO.	N/A	N/A	Condition is no longer applicable at this stage of the project.
	The course should be sufficient to provide the site staff with an appreciation of the project's environmental requirements, and how they are to be implemented.	N/A	N/A	Condition is no longer applicable at this stage of the project.
	Awareness of any other environmental matters, which are deemed to be necessary by the ECO.	N/A	N/A	Condition is no longer applicable at this stage of the project.
	Ensuring that employee information posters, outlining the environmental "do's" and "don'ts" (as per the environmental awareness training course) are erected at prominent locations throughout the site	N/A	N/A	Condition is no longer applicable at this stage of the project.



Ref #	Condition	Compliance Y/N	Compliance Rating	Comments/ Verification
	Ensure that construction workers have received basic training in environmental management, including the storage and handling of hazardous substances, minimisation of disturbance to sensitive areas, management of waste, and prevention of water pollution.	N/A	N/A	Condition is no longer applicable at this stage of the project.
	Records must be kept of those that have completed the relevant training	N/A	N/A	Condition is no longer applicable at this stage of the project.
	All sub-contractors must have a copy of the EMPr and sign a declaration/acknowledgement that they are aware and familiar with the contents and requirements of the EMPr and that they will conduct work in such a manner as to ensure compliance with the requirements of the EMPr. All subcontractors performing the works should appoint a qualified Environmental Officer for the implementation of this EMPr and other project permits and authorisations. » Contractors and main sub-contractors should have a basic training in the identification of archaeological sites/objects, and protected flora and fauna that may be encountered on the site.	N/A	N/A	Condition is no longer applicable at this stage of the project.
	Environmental Awareness Training must take the form of an on-site talk and demonstration by the ECO before the commencement of site establishment and construction on site.	N/A	N/A	Condition is no longer applicable at this stage of the project.
	Environmental induction training must be presented to all persons who are to work on the site	N/A	N/A	Condition is no longer applicable at this stage of the project.
	Toolbox talks should be held on a scheduled and regular basis (at least twice a month/ if necessary) where foremen, environmental and safety representatives of different components of the Works and sub-consultants hold talks relating to environmental practices and safety awareness on site.	N/A	N/A	Condition is no longer applicable at this stage of the project.
6.6	Construction-Objective 20			
	The independent ECO will be responsible for monitoring (on a monthly basis) for the most part on a monthly basis although will include others on a need's basis	N/A	N/A	Condition is no longer applicable at this stage of the project.



Ref #	Condition	Compliance Y/N	Compliance Rating	Comments/ Verification
	The EO for the Contractor/s performing different aspects of activities on site must be appointed prior to site mobilisation and will be responsible for the day to day implementation of the EMPr and other project permits and authorisations. The EO will be responsible for weekly and monthly reporting to the ECO and Site Manager	N/A	N/A	Condition is no longer applicable at this stage of the project.
	All supervisory staff including Foremen, Resident Engineers, and the ECO/ EO/ Environmental Representative must be provided the means to be able to submit non-conformance reports to the Site Manager	N/A	N/A	Condition is no longer applicable at this stage of the project.
	Non-conformance reports will describe, in detail, the cause, nature and effects of any environmental non-conformance by the Contractor. Records of penalties imposed may be required by the relevant authority	N/A	N/A	Condition is no longer applicable at this stage of the project.
	The non-conformance report will be updated on completion of the corrective measures indicated on the finding sheet. The report must indicate that the remediation measures have been implemented timeously and that the non-conformance can be closed-out to the satisfaction of the Site Manager and ECO	N/A	N/A	Condition is no longer applicable at this stage of the project.
	A monitoring report will be compiled by the ECO on a monthly basis and must be submitted to DEA for their records (Director: Compliance Monitoring).	N/A	N/A	Condition is no longer applicable at this stage of the project.
	The EO will be responsible for the weekly and monthly reports which will be submitted internally which will aid the ECO in compiling the monitoring report. The monitoring report must be submitted to the DEA on the first week of the following month.	N/A	N/A	Condition is no longer applicable at this stage of the project.
	The Proponent must ensure that project compliance with the conditions of the Environmental Authorisation is audited, and that the audit reports re submitted to the Director: Compliance Monitoring at the DEA.	N/A	N/A	Condition is no longer applicable at this stage of the project.



Ref #	Condition	Compliance Y/N	Compliance Rating	Comments/ Verification
	A final external audit should be conducted following the completion of rehabilitation after construction is completed. The audit report must be submitted to the DEA within 30 days of completion of the audit (i.e. within 30 days of site handover) and within 30 days of completion of rehabilitation activities.	Y	4	Environmental audit reports were submitted to the department within 30 days of completion of the construction phase and a final environmental audit was undertaken on 24 November 2022. It must however, be noted that rehabilitation had not been undertaken at the camps (at the landowners request) and no written confirmation of the proposed future use of these areas was available at the time of the audit.
	<p>30. The environmental audit report must:</p> <p>30.1. Be compiled by an independent environmental auditor;</p> <p>30.2. Indicate the date of the audit, the name of the auditor and the outcome of the audit;</p> <p>30.3. Evaluate compliance with the requirements of the approved EMPr and this environmental authorisation;</p> <p>30.4. Include measures to be implemented to attend to any non-compliances or degradation noted;</p> <p>30.5. Include copies of any approvals granted by other authorities relevant to the development for the reporting period;</p> <p>30.6. Highlight any outstanding environmental issues that must be addressed, along with recommendations for ensuring these issues are appropriately addressed;</p> <p>30.7. Include a copy of this authorisation and the approved EMPr;</p> <p>30.8. Include all documentation such as waste disposal certificates, hazardous waste landfill site licences etc. pertaining to this authorisation; and</p> <p>30.9. Include evidence of adherence to the conditions of this authorisation and the EMPr where relevant such as training records and attendance records.</p>	Y	4	EIMS (Pty) Ltd was appointed to provide an independent Auditor to the project. The audit report was compiled in accordance to the requirements of this EA.
7.1	Post Construction-Objective 1			
	A site rehabilitation programme must be compiled and implemented (refer to Appendix E).	Y	4	Site rehabilitation programme was developed by the Ecologist and implemented during rehabilitation.



Ref #	Condition	Compliance Y/N	Compliance Rating	Comments/ Verification
	All temporary facilities, equipment and waste materials must be removed from site and appropriately disposed of.	N	2	Not all materials had been removed from site at the time of the audit. Some materials still remained at the contractor's main and satellite camps, in some instances these included waste materials, old bunds, hydrocarbon spillages and topsoil.
	Necessary drainage works and anti-erosion measures must be installed, where required, to minimise loss of topsoil and control erosion.	Y	4	No concerns were noted with regards to erosion or drainage during the audit inspection.
	Disturbed areas must be rehabilitated/re-vegetated with appropriate natural vegetation and/or local seed mix. Re-use native/indigenous plant species removed from disturbance areas in the rehabilitation phase as far as practically possible.	Y	4	Rehabilitation was undertaken as per the rehabilitation plan. Some vegetation regrowth was noted along the reserves of the access roads
	No exotic plants may be used for rehabilitation purposes. Only indigenous plants of the area may be utilised.	Y	4	No exotic plants were noted on site.
	Newly rehabilitated areas must be adequately demarcated and access restricted (specifically vehicular access) until vegetation is established. Appropriate signage must be established and maintained to ensure personnel are aware of these areas.	Y	4	Signage notifying people of rehabilitated areas was noted during the audit inspection.
	Re-vegetated areas may have to be protected from wind erosion and maintained until an acceptable plant cover has been achieved.	Y	4	Not yet applicable since bulk earthworks are taking place.
	On-going alien plant monitoring (as per the Alien invasive Management Plan- refer to Appendix C) and removal should be undertaken on all areas of natural vegetation on an annual basis.	N	2	Invasive alien Plant Management Plan is in place however monitoring programme is not yet established



5.3 FINDINGS OF THE AUDIT

Findings from the compliance evaluation are presented below.

5.3.1 FINDINGS FROM THE COMPLIANCE EVALUATION OF THE EA AND EMPR


Table 7: Table of findings of the audit.

Finding #	EA / EMPR Ref #	Requirement Description	Findings and Recommendations
Environmental Authorization (EA)			
1	10 & 11	<p>The holder of the authorisation must notify every registered interested and affected party, in writing and within 12 (twelve) calendar days of the date of this environmental authorisation, of the decision to authorise the activity.</p> <p>"The notification referred to must -</p> <p>11.1. specify the date on which the authorisation was issued;</p> <p>11.2. inform the interested and affected party of the appeal procedure provided for in Chapter 7 of the Environmental Impact Assessment Regulations, 2010;</p> <p>11.3. advise the interested and affected party that a copy of the authorisation will be furnished on request; and,</p> <p>11.4. give the reasons of the competent authority for the decision"</p>	<p>Proof of notifying interested and affected parties of the decision within 14 days was not available at the time of the audit.</p>
2	12	<p>The holder of the authorisation must publish a notice -</p> <p>12.1. informing interested and affected parties of the decision;</p> <p>12.2. informing interested and affected parties where the decision can be accessed; and,</p> <p>12.3. drawing the attention of interested and affected parties to the fact that an appeal may be lodged against this decision in the newspaper(s) contemplated and used in terms of regulation 54(2)(c) and (d) and which</p>	<p>Proof of publishing a notice informing interested and affected parties of the decision; where it can be accessed; and drawing the attention of I&APs to the fact that an appeal may be lodged against the EA decision in terms of the National Appeal Regulations, 2014 was not available at the time of the audit.</p>



Finding #	EA / EMPr Ref #	Requirement Description	Findings and Recommendations
		newspaper was used for the placing of advertisements as part of the public participation process.	
3	27	The holder of this authorisation must keep all records pertaining to monitoring and auditing on site and make it available for inspection to any relevant and competent authority in respect of this development	It was reported that all monitoring and auditing records are kept on site on an external hard drive. This hard drive was not available on site during the audit.
4	40	Avifauna and bats-A bird and bat monitoring programme must be implemented to document the effect of the operation of the energy facility on avifauna and bats. Active breeding nests in the immediate surroundings must be monitored during the construction phase and further mitigation measures must be discussed with the avifaunal specialist and implemented if necessary.	It was reported that the bird and bat monitoring programme has not been implemented yet. Therefore, no reports have been submitted to the relevant provincial environmental department, BirdLife South Africa, the Endangered Wildlife Trust (EWT) and the DFFE. It is recommended that this monitoring be implemented as a matter of urgency.
	43	Post-construction avifauna and bat monitoring by an independent monitor should take place for at least two years after operation has commenced. It is recommended that this is done in accordance with BirdLife South Africa/Endangered Wildlife Trust: Best practice guidelines for avian monitoring and impact mitigation at proposed wind energy development sites in Southern Africa.	
	44	Reports regarding bird monitoring must be submitted to the relevant provincial environmental department, BirdLife South Africa, the Endangered Wildlife Trust (EWT) and this Department on a quarterly basis. The report will assist all stakeholders in identifying potential and additional mitigation measures and to establish protocols for a bird monitoring programme for wind energy development in the country.	
5	53	All areas of disturbed soil must be reclaimed using only indigenous grass and shrubs. Reclamation activities shall be undertaken according to the rehabilitation plan to be included in the final EMPr	Reclamation activities were undertaken according to the rehabilitation plan, however, some disturbed areas such as the camps had not been fully rehabilitated at the time of the audit.



Finding #	EA / EMPR Ref #	Requirement Description	Findings and Recommendations
6	54	Topsoil from all excavations and construction activities must be salvaged and reapplied during reclamation.	Topsoil was observed windrowed along the western side of the main camp.
			
7	65	Disturbed areas must be rehabilitated as soon as possible after construction with locally indigenous plants to enhance the conservation of existing natural vegetation on site.	Rehabilitation activities were undertaken according to the rehabilitation plan, however, some disturbed areas such as the camps had not been fully rehabilitated at the time of the audit. Furthermore, topsoil was observed windrowed along the western side of the main camp.



Finding #	EA / EMPr Ref #	Requirement Description	Findings and Recommendations
8	132	A copy of this authorisation and the approved EMPr must be kept at the property where the activity will be undertaken. The authorisation and approved EMPr must be produced to any authorised official of the Department who requests to see it and must be made available for inspection by any employee or agent of the holder of the authorisation who works or undertakes work at the property.	It was reported that all monitoring and auditing records are kept on site on an external hard drive. This hard drive was not on site during the audit. Furthermore, no proof that documents were made available on the EGP website as required by the EA could be provided during the audit.
Environmental Management Programme (EMPr)			
1	7.1	All temporary facilities, equipment and waste materials must be removed from site and appropriately disposed of.	Not all materials had been removed from site at the time of the audit. Some materials still remained at the contractor's main and satellite camps, in some instances these included waste materials, old bunds, hydrocarbon spillages and topsoil.



Finding #	EA / EMPr Ref #	Requirement Description	Findings and Recommendations
2	7.1	On-going alien plant monitoring (as per the Alien invasive Management Plan- refer to Appendix C) and removal should be undertaken on all areas of natural vegetation on an annual basis.	Invasive alien Plant Management Plan is in place however monitoring programme is not yet established



5.4 CONTINUED ADEQUACY OF THE EMPr

Based on the information review, and areas inspected at the time of the audit. The EMPr is currently considered adequate and effective to manage and mitigate the current activities and impacts of the Soetwater Wind farm. No shortcomings in the effectiveness or adequacy of the EMPr were noted during the audit.

5.4.1 NEW IMPACTS IDENTIFIED

No new impacts were identified.

5.4.2 EFFECTIVENESS OF THE EMPr

Based on the information review, and areas inspected at the time of the audit, the EMPr is currently considered adequate and effective to manage and mitigate the impacts.

5.4.3 SHORTCOMINGS IN THE EMPr

No shortcomings were identified in the EMPr.



6 PHOTOGRAPHIC RECORD



Figure 3: View of rehabilitated area signage along the access road to the main camp.



Figure 4: View of chemical toilets at the entrance to the Soetwater Wind Farm.



Figure 5: View of some of the Soetwater Wind Farm turbines.



Figure 6: View of office containers remaining at the main camp.



Figure 7: Western view of the main camp.



Figure 8: View of topsoil windrowed along the western boundary of the main camp.



Figure 9: View of some of the materials that remain at the main camp.



Figure 10: View of the materials remaining at the batch plant.



Figure 11: View of the Met Mast at the Soetwater Wind Farm.



Figure 12: View of some materials that remain at the satellite camp.



7 CONCLUSION

Soetwater appointed EIMS to conduct the final external NEMA audit of the EA and approved EMPr, in compliance with the issued EA and approved EMPr. Additional to the EA and EMPr requirements, scheduled Environmental Compliance Audits are required to be undertaken in terms of Regulation 34 of the National Environmental Management Act, Act 107 of 1998 (NEMA) Environmental Impact Assessment (EIA) Regulations, 2014 (as amended).

A total of 134 conditions of the EA were identified and evaluated. Of these conditions 106 were considered not applicable to the current phase of the project and 28 were deemed applicable. Of the applicable conditions a total of 17 conditions were noted to be fully compliant, 2 partially compliant and 9 conditions were non-compliant. The level of compliance for each condition was calculated according to the methodology described in section 4.2. Utilising this scoring system, a total straight compliance score of 60,71% and a total weighted compliance score of 64,29% was obtained for this audit.

A total of 300 commitments of the EMPr were identified and evaluated. Of these commitments 290 were considered not applicable to the current phase of the project and 10 were deemed applicable. Of the applicable commitments a total of 8 commitments were noted to be fully compliant and 2 partially compliant. The level of compliance for each commitment was calculated according to the methodology described in section 4.2. Utilising this scoring system, a total straight compliance score of 80,00% and a total weighted compliance score of 90,00% was obtained for this audit.

8 ASSUMPTIONS, LIMITATIONS AND GAPS IN KNOWLEDGE

The following assumptions, limitations and gaps in knowledge apply to the audit:

- The information contained in this report was sourced from information and data supplied by third parties that is assumed to be complete, valid and true.
- This audit is undertaken on compliance with the EMPr prepared by Savannah Environmental (Pty) Ltd dated August 2019.
- This report is based on information available at the time of the assessment. The information, data, observations and evidence on what this report is based is beyond the control of EIMS and may change without notice. EIMS will not be liable for any loss or damage which may arise directly or indirectly because of such changes.
- This audit does not specifically assess compliance with any other permits, licences or authorisations applicable to the construction.
- No representation or warranty, express or implied, is or will be made in relation to, and no responsibility or liability is or will be accepted by EIMS in relation to the accuracy of this report.
- Where reference is made to legislation or other statutory provisions in this report the original legislation or other statutory provisions will always take precedence and the reader is directed to revert to the original legislation or statutes.