

Appendix G:

Other



Appendix G1: Screening Report



**SCREENING REPORT FOR AN ENVIRONMENTAL AUTHORIZATION AS
REQUIRED BY THE 2014 EIA REGULATIONS – PROPOSED SITE
ENVIRONMENTAL SENSITIVITY**

EIA Reference number: N/A

Project name: Red Sands Solar

Project title: Red Sands Solar

Date screening report generated: 06/10/2022 18:51:28

Applicant: EnergyTeam

Compiler: Enviro-Insight

Compiler signature:
.....

Application Category: Utilities Infrastructure | Electricity | Generation | Renewable | Solar | PV

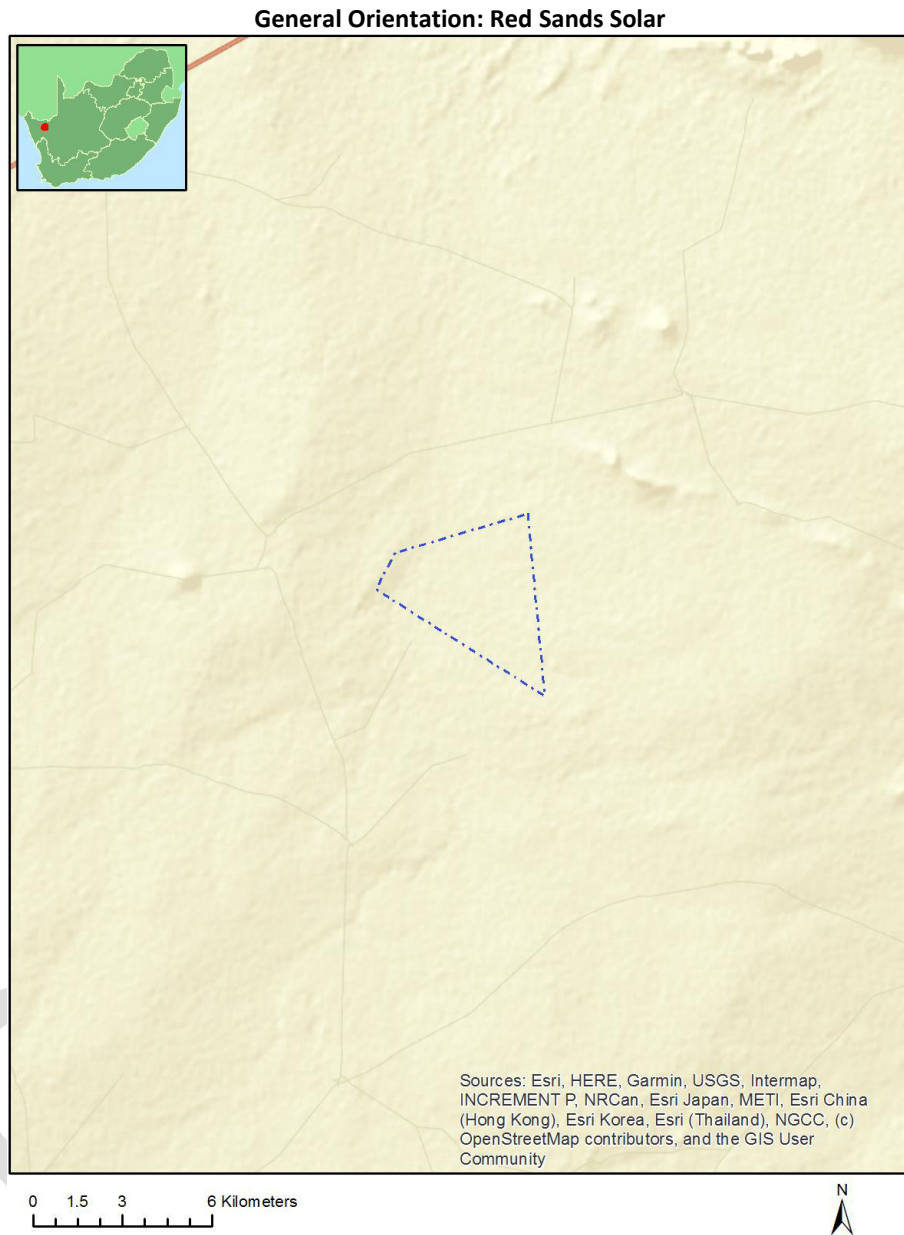


Table of Contents

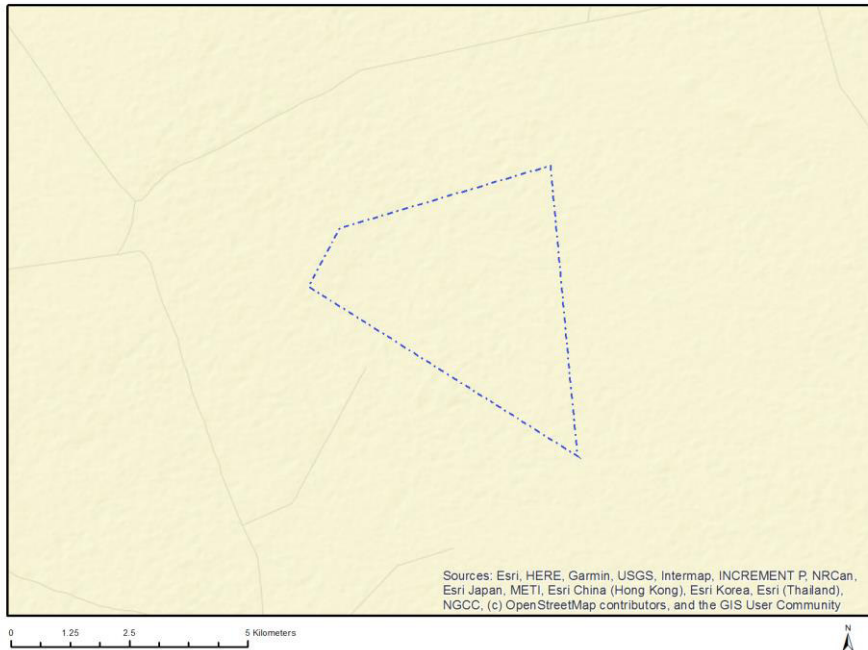
- Proposed Project Location 3
 - Orientation map 1: General location 3
- Map of proposed site and relevant area(s) 4
 - Cadastral details of the proposed site 4
 - Wind and Solar developments with an approved Environmental Authorisation or applications under consideration within 30 km of the proposed area 4
 - Environmental Management Frameworks relevant to the application 5
- Environmental screening results and assessment outcomes 5
 - Relevant development incentives, restrictions, exclusions or prohibitions 5
- Map indicating proposed development footprint within applicable development incentive, restriction, exclusion or prohibition zones 7
 - Proposed Development Area Environmental Sensitivity 7
 - Specialist assessments identified 8
- Results of the environmental sensitivity of the proposed area 10
 - MAP OF RELATIVE AGRICULTURE THEME SENSITIVITY 10
 - MAP OF RELATIVE ANIMAL SPECIES THEME SENSITIVITY 11
 - MAP OF RELATIVE AQUATIC BIODIVERSITY THEME SENSITIVITY 12
 - MAP OF RELATIVE ARCHAEOLOGICAL AND CULTURAL HERITAGE THEME SENSITIVITY 13
 - MAP OF RELATIVE AVIAN THEME SENSITIVITY 14
 - MAP OF RELATIVE CIVIL AVIATION (SOLAR PV) THEME SENSITIVITY 15
 - MAP OF RELATIVE DEFENCE THEME SENSITIVITY 16
 - MAP OF RELATIVE LANDSCAPE (SOLAR) THEME SENSITIVITY 17
 - MAP OF RELATIVE PALEONTOLOGY THEME SENSITIVITY 18
 - MAP OF RELATIVE PLANT SPECIES THEME SENSITIVITY 19
 - MAP OF RELATIVE RFI THEME SENSITIVITY 20
 - MAP OF RELATIVE TERRESTRIAL BIODIVERSITY THEME SENSITIVITY 21

Proposed Project Location

Orientation map 1: General location



Map of proposed site and relevant area(s)



Cadastral details of the proposed site

Property details:

No	Farm Name	Farm/ Erf No	Portion	Latitude	Longitude	Property Type
1	KLIPHAKSKEEN	98	0	29°31'57.51S	18°40'10.92E	Farm
2	DONKERDUISPRAAT	95	0	29°32'27.06S	18°44'48.09E	Farm
3	KLIPHAKSKEEN	98	1	29°33'2.83S	18°42'3.15E	Farm Portion
4	DONKERDUISPRAAT	95	0	29°32'27.06S	18°44'48.09E	Farm Portion

Development footprint¹ vertices:
No development footprint(s) specified.

Wind and Solar developments with an approved Environmental Authorisation or applications under consideration within 30 km of the proposed area

No	EIA Reference No	Classification	Status of application	Distance from proposed area (km)
1	14/12/16/3/3/2/970	Solar PV	Approved	9.7
2	14/12/16/3/3/2/964	Solar PV	Approved	9.7

¹ “development footprint”, means the area within the site on which the development will take place and includes all ancillary developments for example roads, power lines, boundary walls, paving etc. which require vegetation clearance or which will be disturbed and for which the application has been submitted.

3	14/12/16/3/3/2/448/7	Solar PV	Approved	20.1
4	14/12/16/3/3/2/968	Solar PV	Approved	9.7
5	14/12/16/3/3/2/965	Solar PV	Approved	9.7
6	14/12/16/3/3/2/969	Solar PV	Approved	9.7
7	14/12/16/3/3/2/873	Solar PV	Approved	21.3
8	12/12/20/2151	Solar PV	Approved	26.2
9	14/12/16/3/3/2/448/2	Solar PV	Approved	20.1
10	14/12/16/3/3/2/448/13	Solar PV	Approved	20.1
11	14/12/16/3/3/2/448/1	Solar PV	Approved	20.1
12	14/12/16/3/3/2/448/10	Solar PV	Approved	20.1
13	14/12/16/3/3/2/448/8	Solar PV	Approved	20.1
14	14/12/16/3/3/2/972	Solar PV	Approved	9.7
15	14/12/16/3/3/2/448/12	Solar PV	Approved	20.1
16	14/12/16/3/3/2/448/9	Solar PV	Approved	20.1
17	14/12/16/3/3/1/2221	Solar PV	Approved	20.1
18	14/12/16/3/3/2/222	Solar PV	Approved	26.5
19	14/12/16/3/3/1/2222	Solar PV	Approved	20.1
20	14/12/16/3/3/2/869	Solar PV	Approved	21.3
21	14/12/16/3/3/2/448/15	Solar PV	Approved	20.1
22	12/12/20/2334/5	Solar PV	Approved	17.5
23	14/12/16/3/3/2/871	Solar PV	Approved	21.3
24	14/12/16/3/3/2/971	Solar PV	Approved	9.7
25	14/12/16/3/3/2/448/14	Solar PV	Approved	20.1
26	14/12/16/3/3/2/448/1	Solar PV	Approved	20.1
27	14/12/16/3/3/2/448/16	Solar PV	Approved	20.1
28	14/12/16/3/3/2/448/10	Solar PV	Approved	20.1
29	12/12/20/2602	Solar PV	Approved	26.5
30	14/12/16/3/3/2/448/11	Solar PV	Approved	20.1
31	14/12/16/3/3/2/448/6	Solar PV	Approved	20.1
32	14/12/16/3/3/2/448/4	Solar PV	Approved	20.1
33	14/12/16/3/3/2/872	Solar PV	Approved	21.3
34	12/12/20/2334/4	Solar PV	Approved	17.5
35	14/12/16/3/3/2/448/5	Solar PV	Approved	20.1
36	14/12/16/3/3/2/448/3	Solar PV	Approved	20.1

Environmental Management Frameworks relevant to the application

No intersections with EMF areas found.

Environmental screening results and assessment outcomes

The following sections contain a summary of any development incentives, restrictions, exclusions or prohibitions that apply to the proposed development site as well as the most environmental sensitive features on the site based on the site sensitivity screening results for the application classification that was selected. The application classification selected for this report is:

Utilities Infrastructure | Electricity | Generation | Renewable | Solar | PV.

Relevant development incentives, restrictions, exclusions or prohibitions

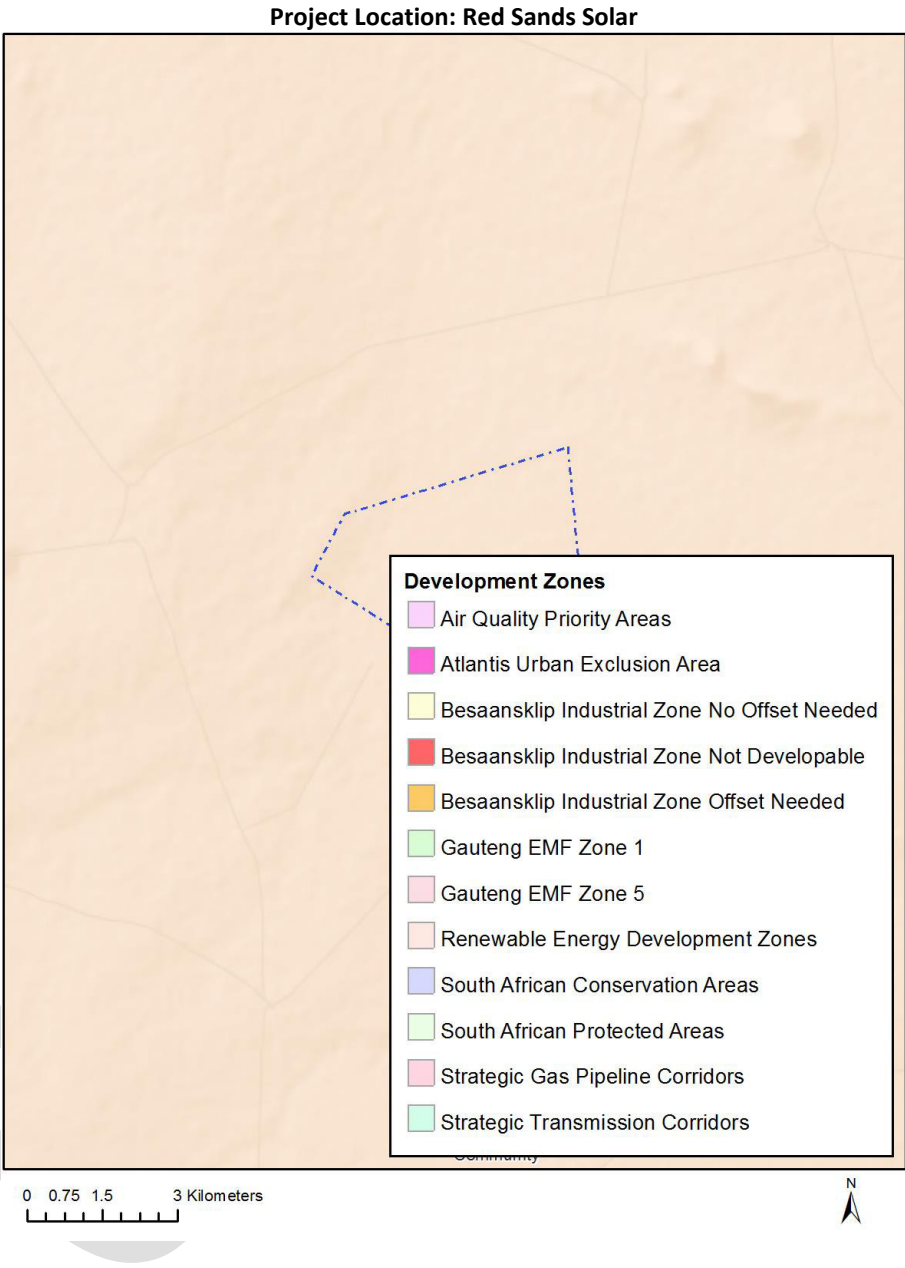
The following development incentives, restrictions, exclusions or prohibitions and their implications that apply to this site are indicated below.

Incentiv	Implication
----------	-------------

e, restrictio n or prohibiti on	
Strategic Transmissi on Corridor- Northern corridor	https://screening.environment.gov.za/ScreeningDownloads/DevelopmentZones/Combined_EGI.pdf
Renewable energy developme nt zones 8- Springbok	https://screening.environment.gov.za/ScreeningDownloads/DevelopmentZones/Combined_REDZ.pdf

OFFICIAL

Map indicating proposed development footprint within applicable development incentive, restriction, exclusion or prohibition zones



Proposed Development Area Environmental Sensitivity

The following summary of the development site environmental sensitivities is identified. Only the highest environmental sensitivity is indicated. The footprint environmental sensitivities for the proposed development footprint as identified, are indicative only and must be verified on site by a suitably qualified person before the specialist assessments identified below can be confirmed.

Theme	Very High sensitivity	High sensitivity	Medium sensitivity	Low sensitivity
Agriculture Theme				X
Animal Species Theme		X		

Aquatic Biodiversity Theme				X
Archaeological and Cultural Heritage Theme				X
Avian Theme	X			
Civil Aviation (Solar PV) Theme				X
Defence Theme				X
Landscape (Solar) Theme	X			
Paleontology Theme				X
Plant Species Theme			X	
RFI Theme	X			
Terrestrial Biodiversity Theme				X

Specialist assessments identified

Based on the selected classification, and the environmental sensitivities of the proposed development footprint, the following list of specialist assessments have been identified for inclusion in the assessment report. It is the responsibility of the EAP to confirm this list and to motivate in the assessment report, the reason for not including any of the identified specialist study including the provision of photographic evidence of the site situation.

N o	Specialist assessment	Assessment Protocol
1	Agricultural Impact Assessment	https://screening.environment.gov.za/ScreeningDownloads/AssessmentProtocols/Gazetted_WindAndSolar_Agriculture_Assessment_Protocols.pdf
2	Landscape/Visual Impact Assessment	https://screening.environment.gov.za/ScreeningDownloads/AssessmentProtocols/Gazetted_General_Requirement_Assessment_Protocols.pdf
3	Archaeological and Cultural Heritage Impact Assessment	https://screening.environment.gov.za/ScreeningDownloads/AssessmentProtocols/Gazetted_General_Requirement_Assessment_Protocols.pdf
4	Palaeontology Impact Assessment	https://screening.environment.gov.za/ScreeningDownloads/AssessmentProtocols/Gazetted_General_Requirement_Assessment_Protocols.pdf
5	Terrestrial Biodiversity Impact Assessment	https://screening.environment.gov.za/ScreeningDownloads/AssessmentProtocols/Gazetted_Terrestrial_Biodiversity_Assessment_Protocols.pdf
6	Aquatic Biodiversity	https://screening.environment.gov.za/ScreeningDownloads/AssessmentProtocols/Gazetted_Aquatic_Biodiversity_Assessment_Protocols.pdf

	Impact Assessment	
7	Civil Aviation Assessment	https://screening.environment.gov.za/ScreeningDownloads/AssessmentProtocols/Gazetted_Civil_Aviation_Installations_Assessment_Protocols.pdf
8	Defense Assessment	https://screening.environment.gov.za/ScreeningDownloads/AssessmentProtocols/Gazetted_Defence_Installations_Assessment_Protocols.pdf
9	RFI Assessment	https://screening.environment.gov.za/ScreeningDownloads/AssessmentProtocols/Gazetted_General_Requirement_Assessment_Protocols.pdf
10	Geotechnical Assessment	https://screening.environment.gov.za/ScreeningDownloads/AssessmentProtocols/Gazetted_General_Requirement_Assessment_Protocols.pdf
11	Socio-Economic Assessment	https://screening.environment.gov.za/ScreeningDownloads/AssessmentProtocols/Gazetted_General_Requirement_Assessment_Protocols.pdf
12	Plant Species Assessment	https://screening.environment.gov.za/ScreeningDownloads/AssessmentProtocols/Gazetted_Plant_Species_Assessment_Protocols.pdf
13	Animal Species Assessment	https://screening.environment.gov.za/ScreeningDownloads/AssessmentProtocols/Gazetted_Animal_Species_Assessment_Protocols.pdf

Results of the environmental sensitivity of the proposed area.

The following section represents the results of the screening for environmental sensitivity of the proposed site for relevant environmental themes associated with the project classification. It is the duty of the EAP to ensure that the environmental themes provided by the screening tool are comprehensive and complete for the project. Refer to the disclaimer.

MAP OF RELATIVE AGRICULTURE THEME SENSITIVITY

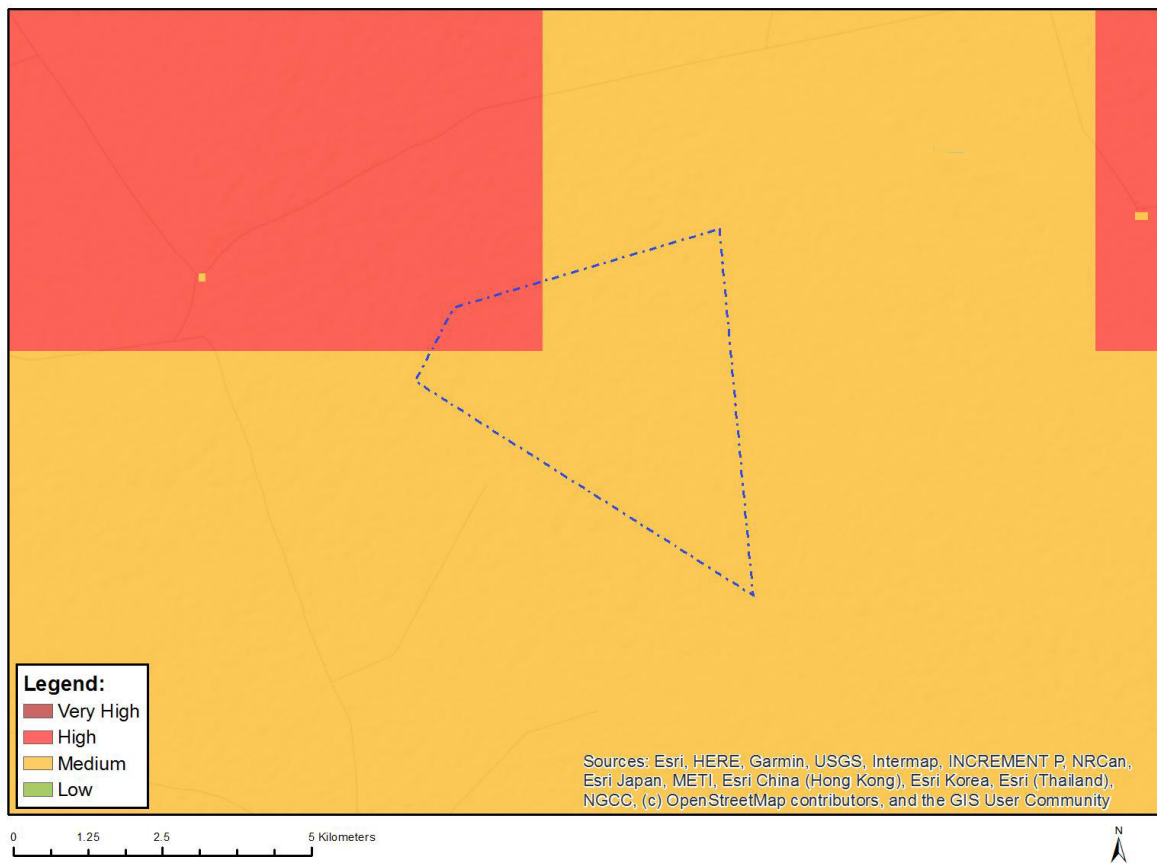


Very High sensitivity	High sensitivity	Medium sensitivity	Low sensitivity
			X

Sensitivity Features:

Sensitivity	Feature(s)
Low	Land capability;01. Very low/02. Very low/03. Low-Very low/04. Low-Very low/05. Low

MAP OF RELATIVE ANIMAL SPECIES THEME SENSITIVITY



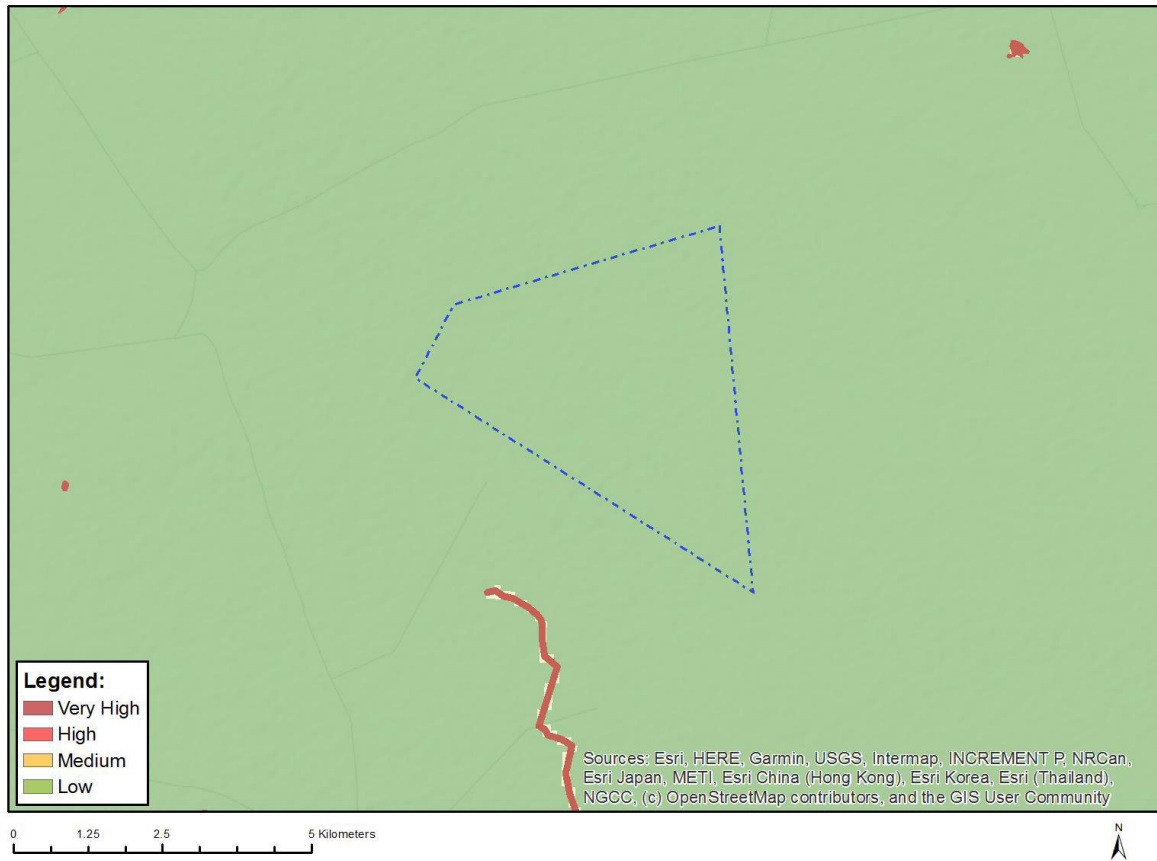
Where only a sensitive plant unique number or sensitive animal unique number is provided in the screening report and an assessment is required, the environmental assessment practitioner (EAP) or specialist is required to email SANBI at eiadatarequests@sanbi.org.za listing all sensitive species with their unique identifiers for which information is required. The name has been withheld as the species may be prone to illegal harvesting and must be protected. SANBI will release the actual species name after the details of the EAP or specialist have been documented.

Very High sensitivity	High sensitivity	Medium sensitivity	Low sensitivity
	X		

Sensitivity Features:

Sensitivity	Feature(s)
High	Aves-Neotis ludwigii
Medium	Aves-Neotis ludwigii
Medium	Aves-Sagittarius serpentarius
Medium	Aves-Calendulauda burra

MAP OF RELATIVE AQUATIC BIODIVERSITY THEME SENSITIVITY



Very High sensitivity	High sensitivity	Medium sensitivity	Low sensitivity
			X

Sensitivity Features:

Sensitivity	Feature(s)
Low	Low sensitivity

MAP OF RELATIVE ARCHAEOLOGICAL AND CULTURAL HERITAGE THEME SENSITIVITY

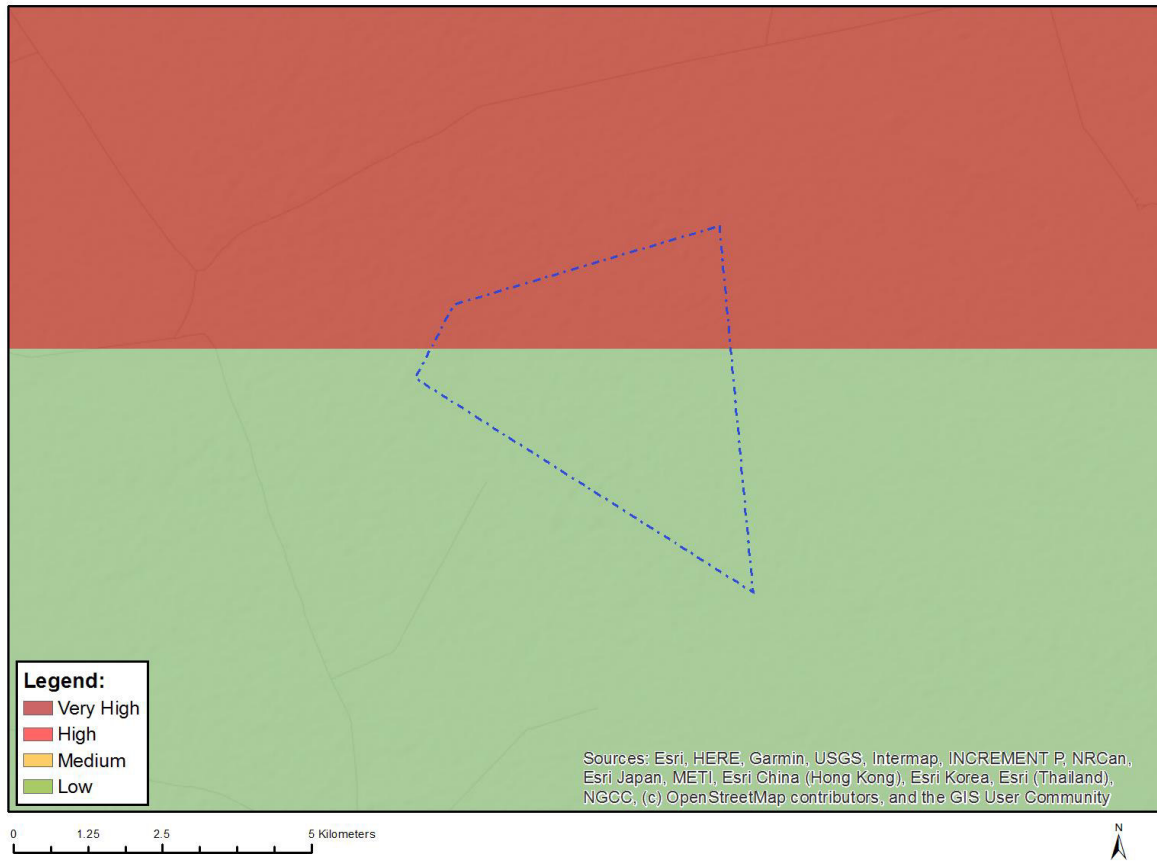


Very High sensitivity	High sensitivity	Medium sensitivity	Low sensitivity
			X

Sensitivity Features:

Sensitivity	Feature(s)
Low	Low sensitivity

MAP OF RELATIVE AVIAN THEME SENSITIVITY

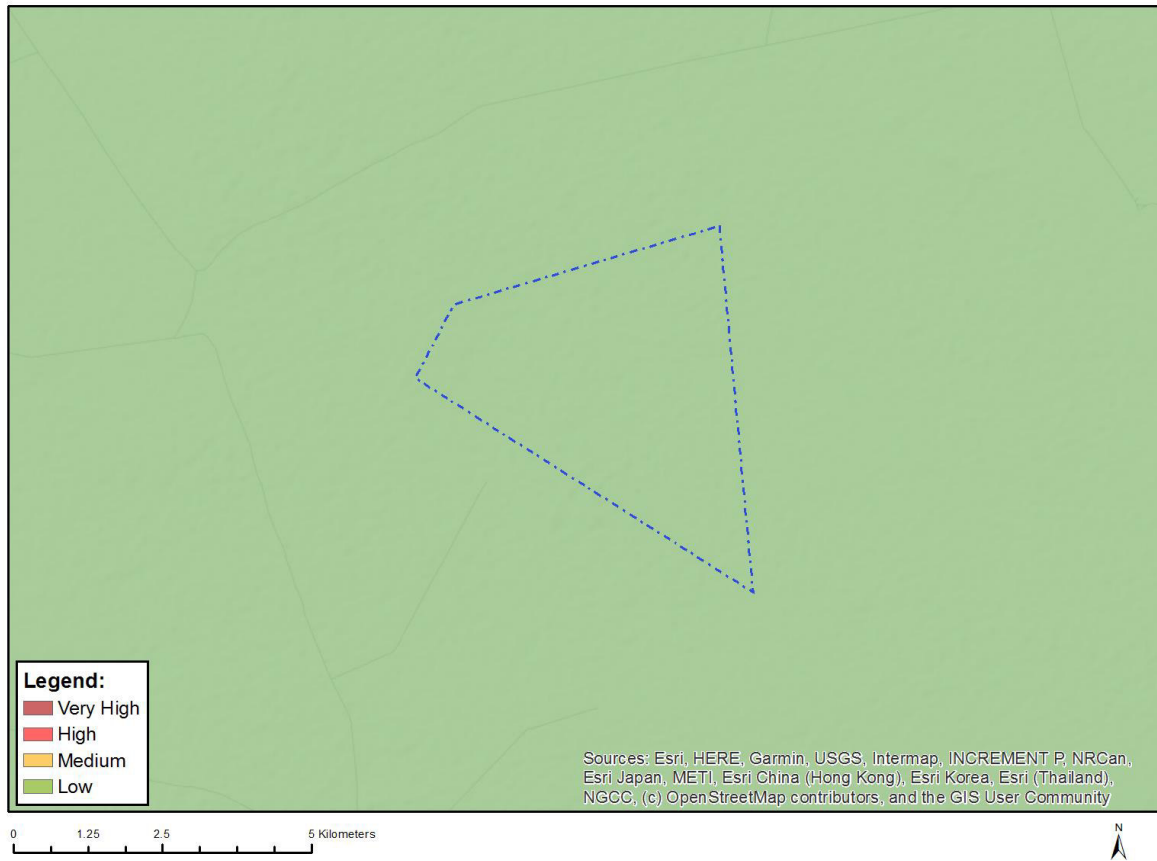


Very High sensitivity	High sensitivity	Medium sensitivity	Low sensitivity
X			

Sensitivity Features:

Sensitivity	Feature(s)
Low	Low Sensitivity
Very High	areas where Red Larks were found to be present

MAP OF RELATIVE CIVIL AVIATION (SOLAR PV) THEME SENSITIVITY

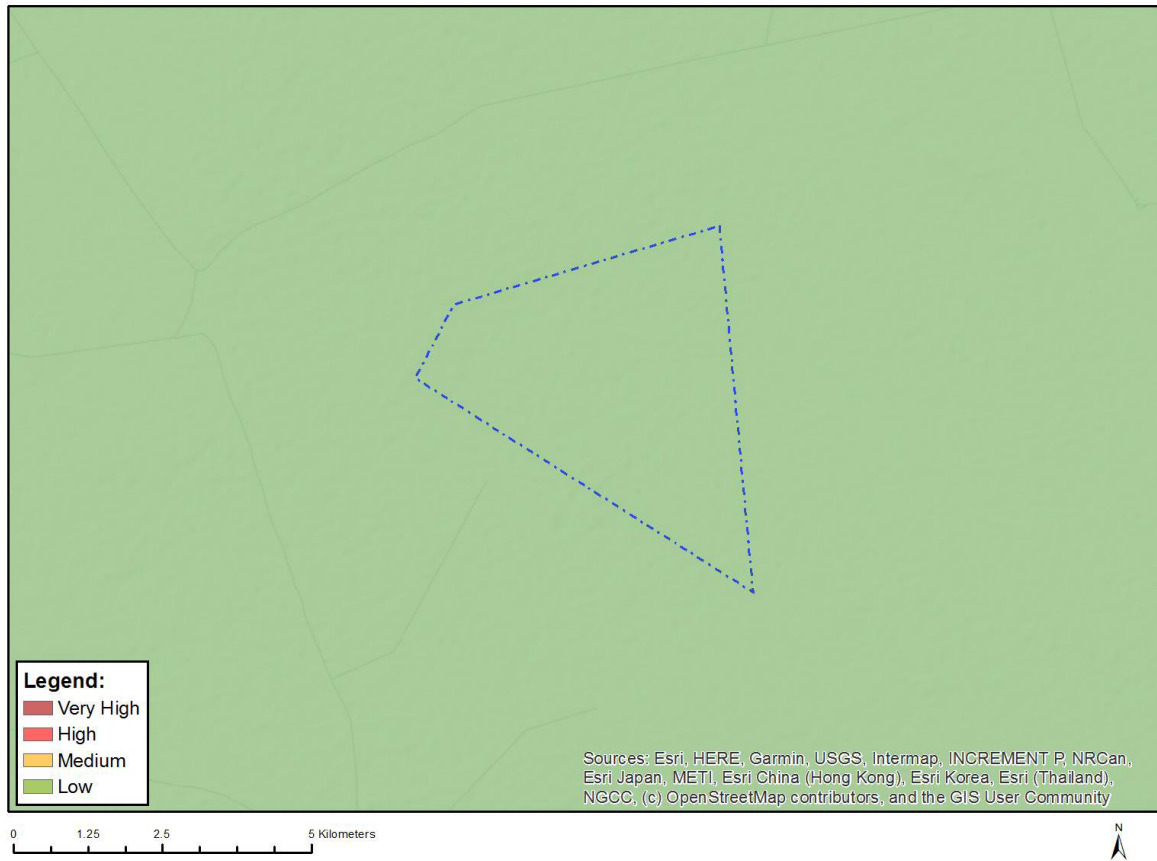


Very High sensitivity	High sensitivity	Medium sensitivity	Low sensitivity
			X

Sensitivity Features:

Sensitivity	Feature(s)
Low	No major or other types of civil aviation aerodromes

MAP OF RELATIVE DEFENCE THEME SENSITIVITY

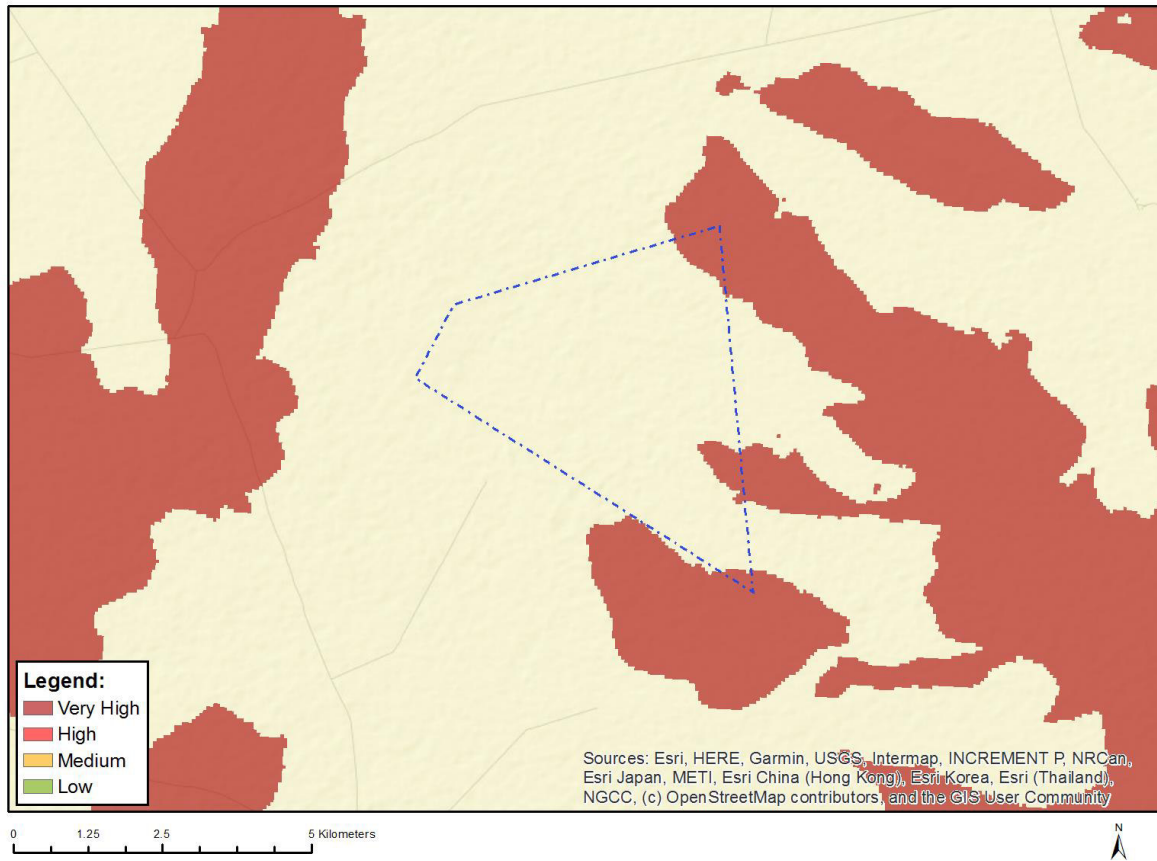


Very High sensitivity	High sensitivity	Medium sensitivity	Low sensitivity
			X

Sensitivity Features:

Sensitivity	Feature(s)
Low	Low sensitivity

MAP OF RELATIVE LANDSCAPE (SOLAR) THEME SENSITIVITY



Very High sensitivity	High sensitivity	Medium sensitivity	Low sensitivity
X			

Sensitivity Features:

Sensitivity	Feature(s)
Very High	Mountain tops and high ridges

MAP OF RELATIVE PALEONTOLOGY THEME SENSITIVITY

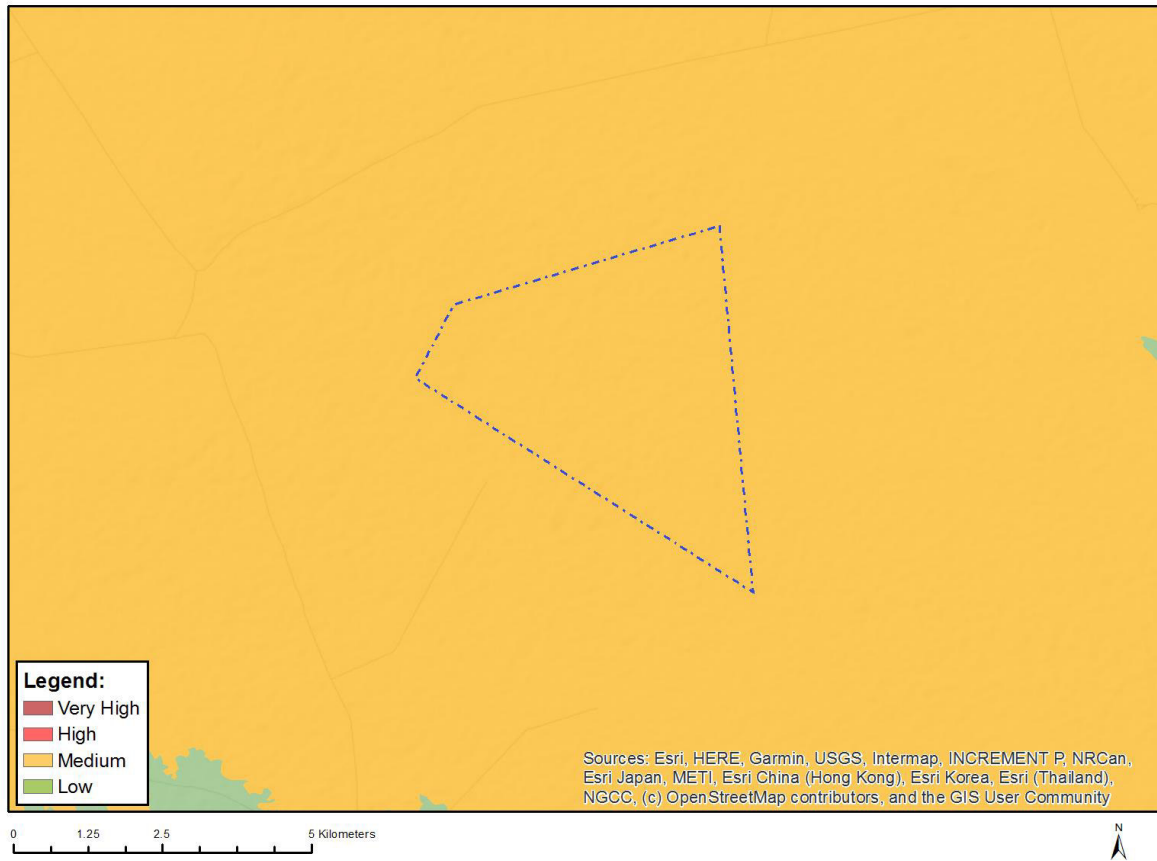


Very High sensitivity	High sensitivity	Medium sensitivity	Low sensitivity
			X

Sensitivity Features:

Sensitivity	Feature(s)
Low	Features with a Low paleontological sensitivity

MAP OF RELATIVE PLANT SPECIES THEME SENSITIVITY



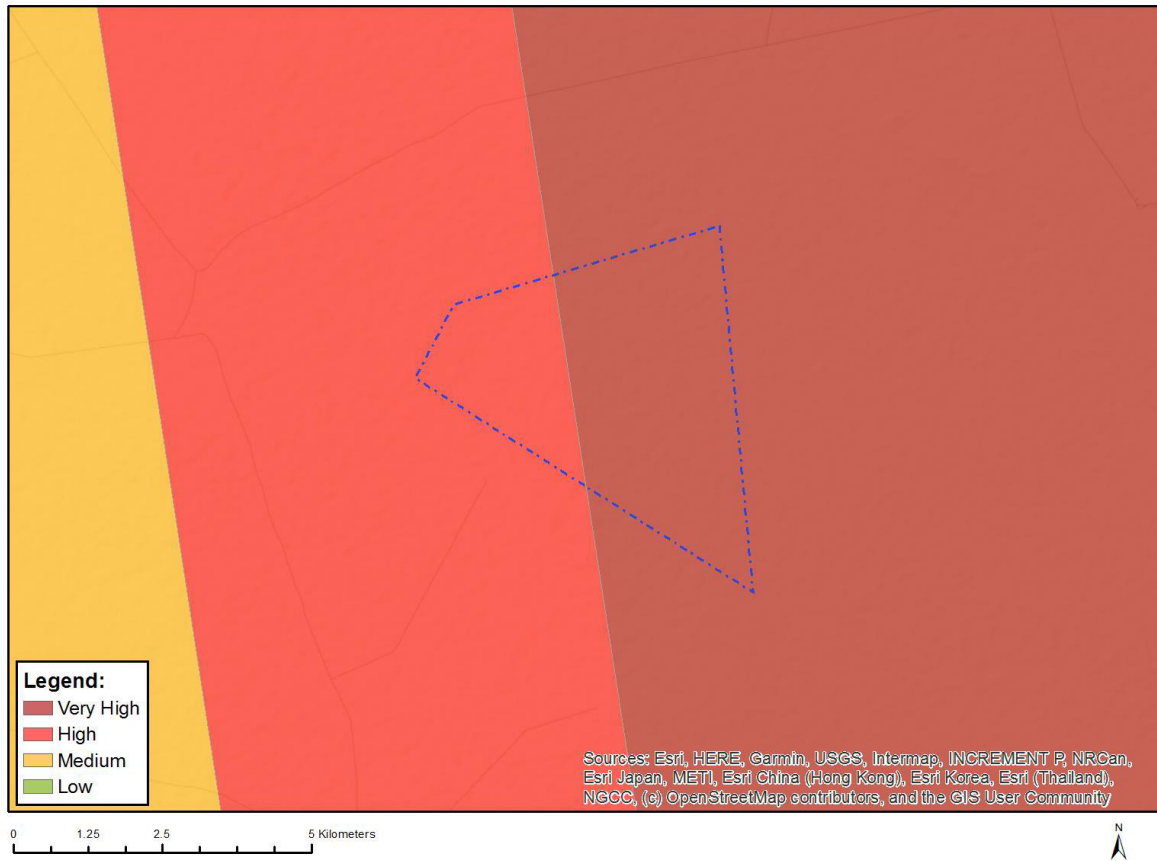
Where only a sensitive plant unique number or sensitive animal unique number is provided in the screening report and an assessment is required, the environmental assessment practitioner (EAP) or specialist is required to email SANBI at eiadatarequests@sanbi.org.za listing all sensitive species with their unique identifiers for which information is required. The name has been withheld as the species may be prone to illegal harvesting and must be protected. SANBI will release the actual species name after the details of the EAP or specialist have been documented.

Very High sensitivity	High sensitivity	Medium sensitivity	Low sensitivity
		X	

Sensitivity Features:

Sensitivity	Feature(s)
Low	Low Sensitivity
Medium	Sensitive species 144

MAP OF RELATIVE RFI THEME SENSITIVITY

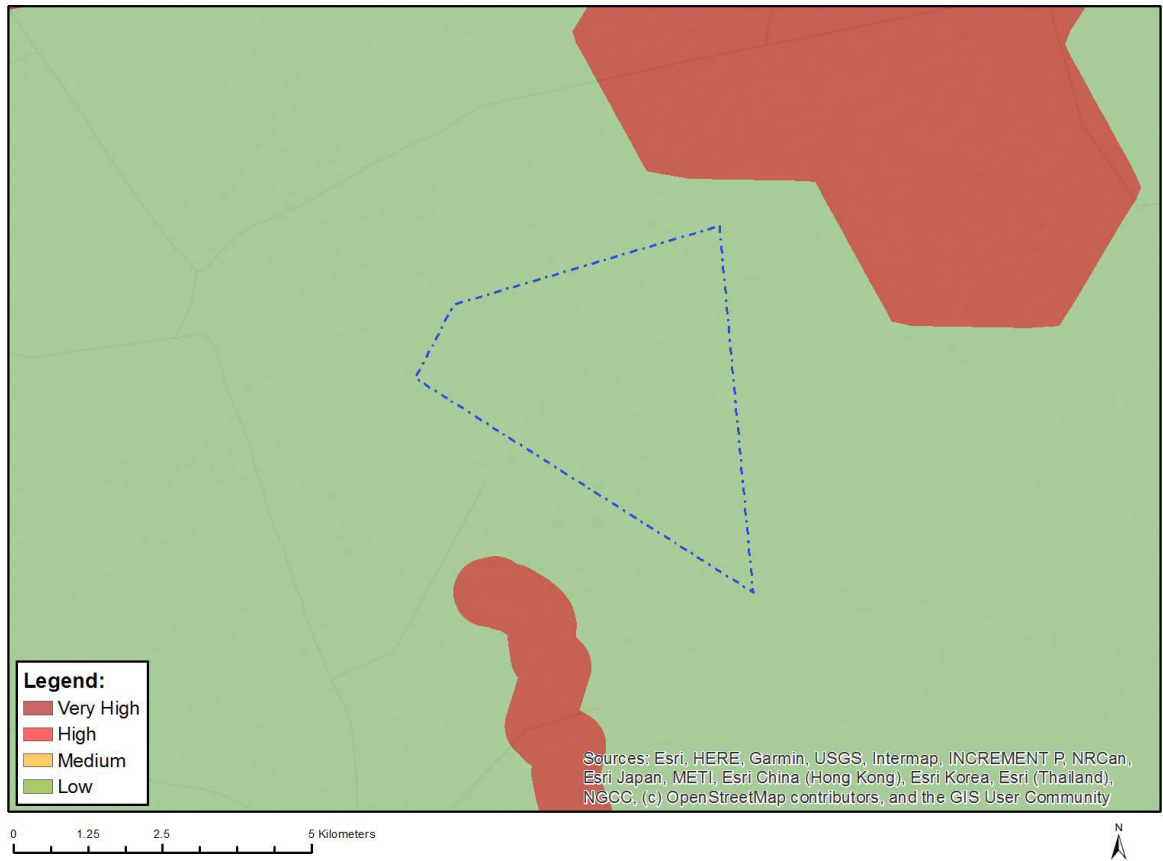


Very High sensitivity	High sensitivity	Medium sensitivity	Low sensitivity
X			

Sensitivity Features:

Sensitivity	Feature(s)
High	Between 8 and 14 km of the Radio Astronomy Advantage Area
Medium	Between 14 and 32 km of the Radio Astronomy Advantage Area
Very High	Inside or within 8 km of the Radio Astronomy Advantage Area

MAP OF RELATIVE TERRESTRIAL BIODIVERSITY THEME SENSITIVITY



Very High sensitivity	High sensitivity	Medium sensitivity	Low sensitivity
			X

Sensitivity Features:

Sensitivity	Feature(s)
Low	Low Sensitivity