

CTS HERITAGE

10 November 2021

Ashlea Strong
WSP

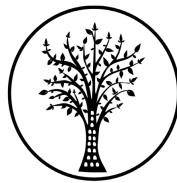
Dear Ms Strong,

**RE: PART TWO AMENDMENT FOR THE APPROVED BRANDVALLEY WEF NEAR MATJIESFONTEIN
IN THE WESTERN AND NORTHERN CAPE**

Brandvalley Wind Farm (Pty) Ltd, a subsidiary of G7 Renewable Energies (Pty) Ltd, has received approval to develop a 140 megawatt (MW) Wind Energy Facility (WEF) near Laingsburg, on the border of the Northern Cape Province and the Western Cape Province in South Africa. The authorised WEF is located in the Karoo Hoogland, the Witzenberg (Ceres) and the Laingsburg Local Municipalities, which fall within the Namakwa, the Cape Winelands and the Central Karoo District Municipalities, respectively. It comprises of up to 58 turbines, with a generating capacity of between 1.5MW and 4MW each.

The Brandvalley Wind Energy Facility (WEF) is proposed on the border of the Northern Cape and Western Cape along the R354 road which connects Matjiesfontein to Sutherland. This project is the third phase (Phase 3) of a series of projects which started in 2011 with the proposed establishment of the Roggeveld Wind Energy Facility (CaseID 473). The original Roggeveld WEF project was broken down into smaller WEFs in 2013. The first of these was the Roggeveld Wind Farm Phase 1 (CaseID 4503). This was followed by the Karreebosch Wind Energy Project (Roggeveld Phase 2) (CaseID 6884) in 2014/2015. The proposed Brandvalley and Rietkloof WEFs are Phases 3 and 4 of the original project although the extent of the farms affected by the various developments have changed since the inception of the project.

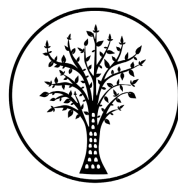
EA was granted for the Brandvalley WEF on 23 November 2016. In the EA, various requirements were stipulated in terms of impacts to Historical, Cultural and Palaeontological sites. In their responses, both SAHRA and HWC, as well as the EA, required that the Final Layout of the proposed development be subject to a walkdown by an archaeologist. This walkdown was completed by CTS Heritage between 24 and 28 July 2021 with the Walkdown Report completed in September 2021. Subsequent to the completed walkdown assessment, the layout was amended in November 2021.



CTS HERITAGE

Table 1: EA requirements for Heritage

| <i>EA Requirements</i> | <i>Implementation</i> |
|--|---|
| A 30m buffer must be applied around all identified archaeological sites | Adhered to in the final layout |
| After initial vegetation clearance has taken place but before the ground is levelled for construction, a professional palaeontologist must undertake a walkthrough and document any identified paleontological findings. The survey/walkthrough must be conducted as per the South African Heritage Resources Agency (SAHRA) requirements. | At construction |
| Should any archaeological sites, artefacts, paleontological fossils or graves be exposed during construction work, work in the immediate vicinity of the find must be stopped, SAHRA must be informed and the services of an accredited heritage professional obtained for an assessment of the heritage resources to be made | During construction |
| Construction managers/foremen must be informed before construction starts on the possible types of heritage sites and cultural material that may be encountered and the procedures to follow when they find sites. | At construction |
| All buffers and no-go areas stipulated in this report must be adhered to for both the facilities and all roads and powerlines. | During construction |
| Should any human remains be uncovered during development they must be immediately protected in situ and reported to the heritage authorities or to an archaeologist. The remains will need to be exhumed at the cost of the developer. | During construction |
| All construction and maintenance crew and vehicles (except small vehicles which may use existing farm tracks) should be kept out of the buffer zones. | During construction |
| The final layout should be shown to the appointed archaeologist before implementation to confirm that all significant heritage resources have been adequately protected. | Final Layout Walkdown Report drafted September 2021 |



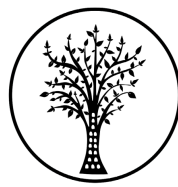
CTS HERITAGE

The following amendments are proposed to the Authorised Brandvalley WEF as part of this Part 2 Amendment Process:

- Turbine positions: - 34 turbines per project so reduced substantially from the +/- 60 positions permitted in the EIA.
- Hardstands - The exact orientation, position and dimensions of the hardstands will be subject to minor change pending the final selection of the TSA. The footprint shown is less than the 3500 m2 per hardstand as per the EIA. The client has indicated that this should be achievable but is very tight - it would be preferable if an increase to 4500 m2 per hardstand can be substantiated due to the reduction in total number of positions (3500 m2 x 60 / 34 = 6000 m2 so total footprint would still be substantially less than assessed in EIA)
- Roads - the 9m and 12m widths stipulated in the respective EIAs - this is assumed to be the riding surface of the roads - additional width for cut / fill earthworks are not included
- Substation & O&M facility - No variation from size and position in EIA
- MV Collectors buried cables - All buried cables follow the road routes
- Site Camp & Laydown area & Batch Plant - Preferred site camp, laydown area and batch plant areas shown as indicated by the contractors. The total / cumulative area is within the limits prescribed in the EIA. The contractors have indicated that for logistic reasons they would prefer to have the batch plants more centrally located and slightly away from the site camp and laydown area. This is preferable but not essential - if, for environmental reasons, we need to relocate the batch plants adjacent to the site camp / laydown area then we can live with this.

Table 2: Proposed Turbine Specification Amendments

| | NEW Specs for ALL WEFS | Approved for Rietkloof WEF |
|------------------------------------|-------------------------------|---|
| Turbine Generation Capacity | 7 MW | Not specified (140MW - with 58 turbines) |
| Hub Height | 125m | Up to 125m |
| Rotor Diameter | 180m | Up to 160 m |
| Blade Length | 90m | Up to 80 m |
| Max upper tip height | 215m | Not specified |



CTS HERITAGE

As with the previous layout, some of the heritage resources known from this area are located along the proposed road alignments. The road alignments have been slightly amended in the proposed amended layout, however it is not anticipated that these amended road alignments will negatively impact on significant archaeological heritage. Furthermore, it is not anticipated that the proposed change in turbine height and reduction in turbine numbers will negatively impact on heritage resources.

This letter is therefore drafted to confirm that the final amended layout dated November 2021 for the Brandvalley WEF does not impact any known heritage resources and adheres to the recommendations included in the CTS Heritage Walkdown report for this development (September 2021) which concludes that “The final layout for the Brandvalley WEF avoids impact to all known significant heritage resources present within the development area. The walkdown of the final layout revealed no new significant heritage resources that are likely to be impacted. It is therefore recommended that this report is accepted as satisfying this condition of the Environmental Authorisation issued for the Brandvalley West WEF project.”

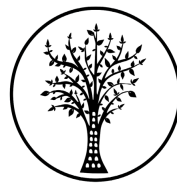
However, please note that the proposed alignments for the 33kV Overhead Lines (OHL) were not assessed as part of the Walkdown process (Figure 2). As such, there remains a risk that the construction of these overhead lines may negatively impact on significant archaeological or palaeontological heritage and as such, it is recommended that the proposed locations of the footings for the pylons for the OHL be inspected for such impacts during the construction phase of the development.

Please see the attached maps as confirmation.

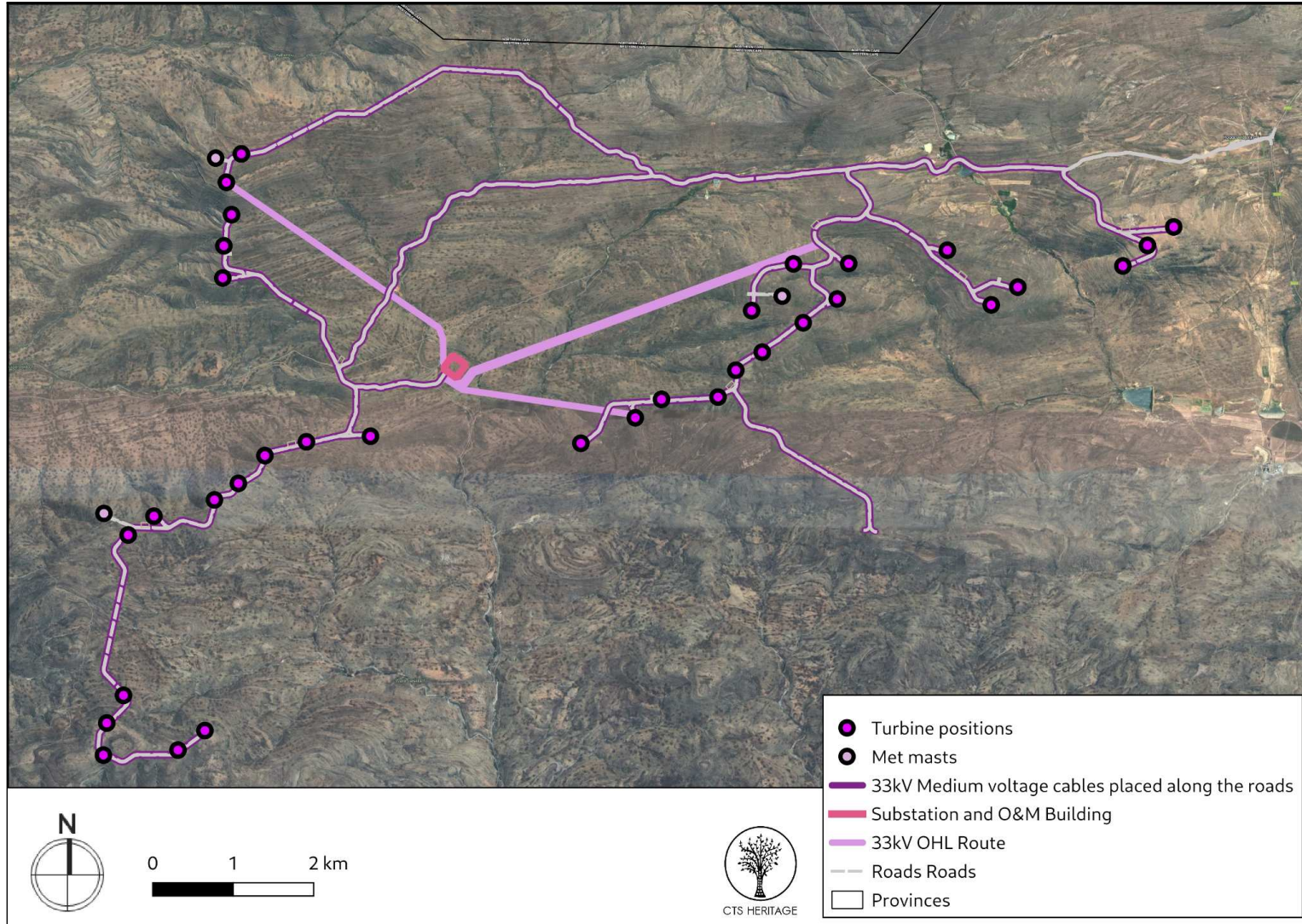
Please feel free to contact me should you have any further questions or concerns in this regard.

Yours sincerely

Jenna Lavin
Archaeologist
Heritage Assessment Practitioner

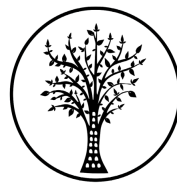


CTS HERITAGE

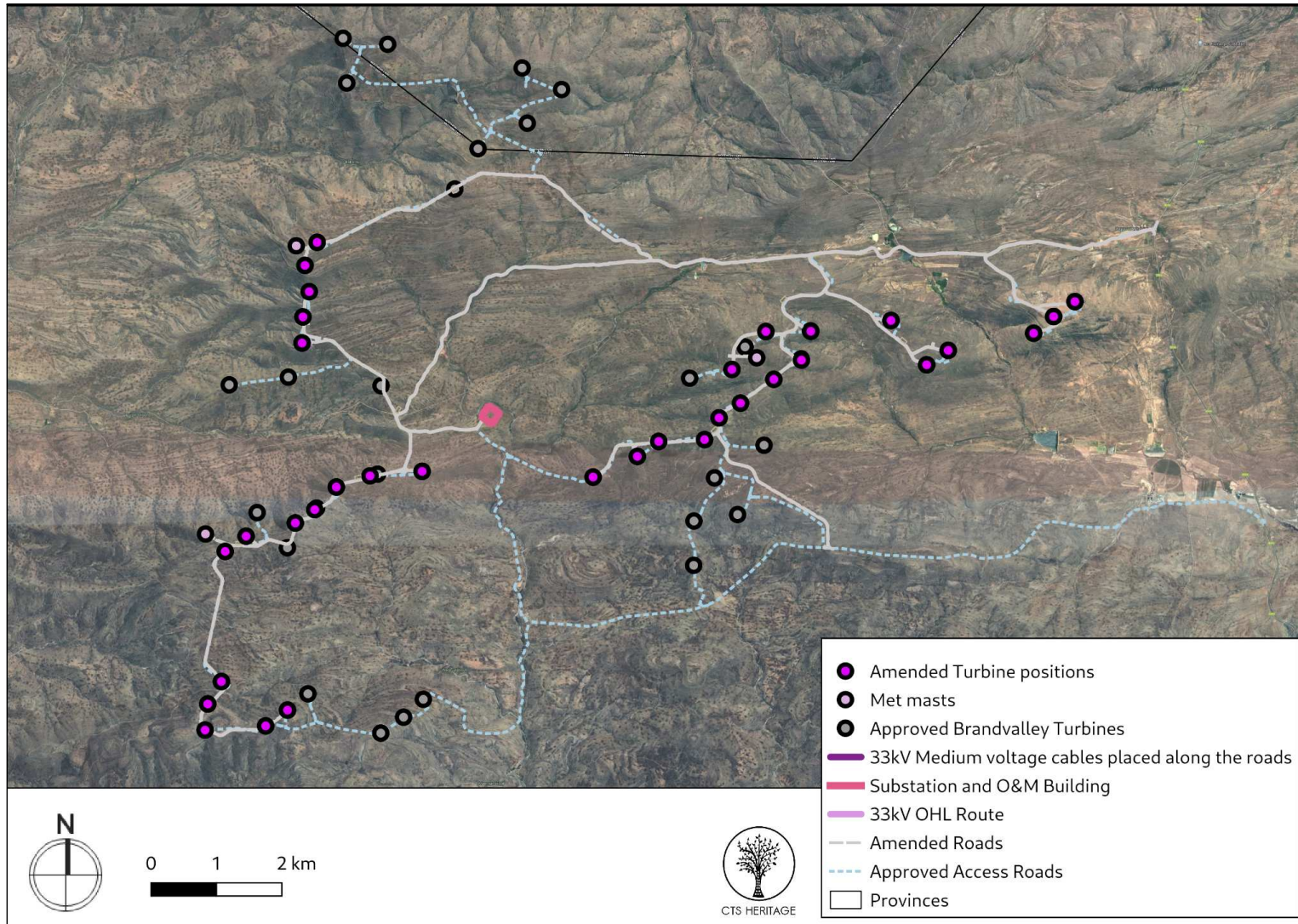


Map 1: Amended final layout of the Brandvalley WEF

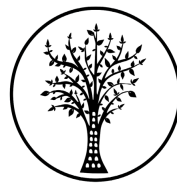
Cedar Tower Services (Pty) Ltd t/a CTS Heritage
Reg: 2013/211135/07 VAT No: 4160278950
34 Harries Street, Plumstead, Cape Town, 7945
Tel: +27 (0)87 073 5739 Email: info@ctsheritage.com Web: www.ctsheritage.com



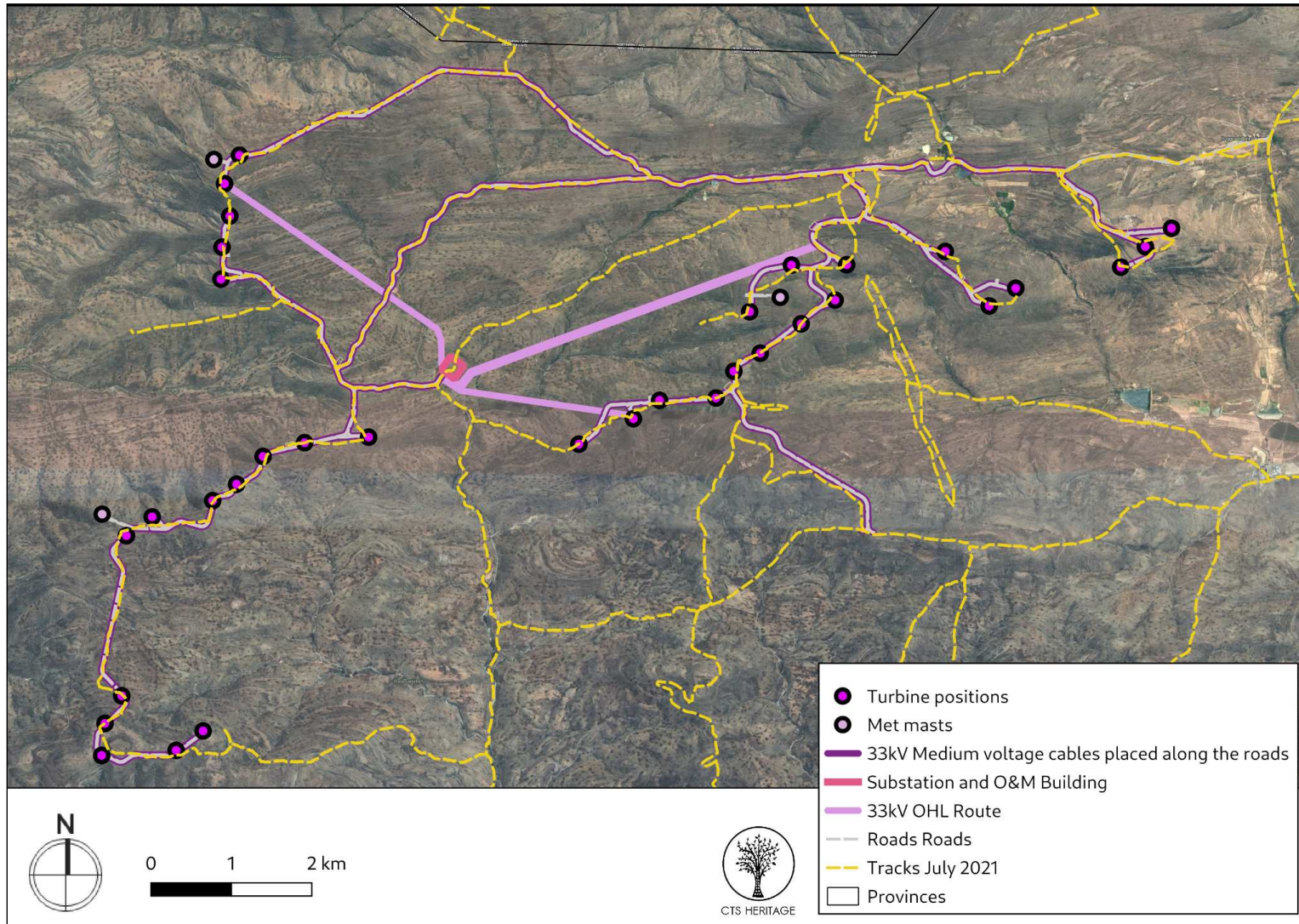
CTS HERITAGE



Map 2: Amended final layout of the Brandvalley WEF overlain with the Approved Brandvalley WEF Layout

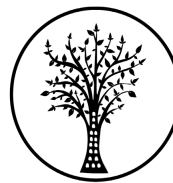


CTS HERITAGE

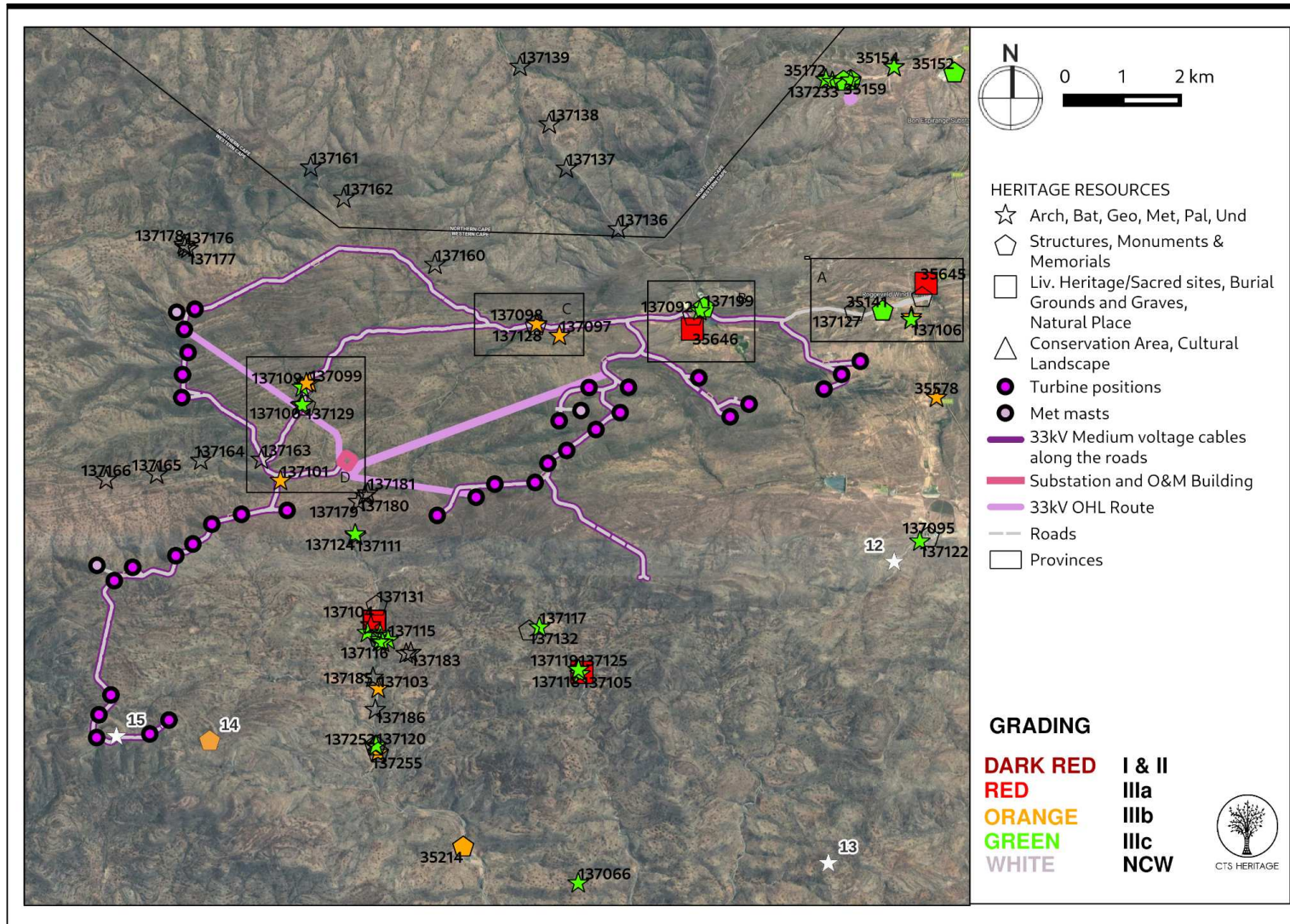


Map 3: Track paths followed for the walkdown of the Final Layout

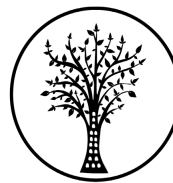
Cedar Tower Services (Pty) Ltd t/a CTS Heritage
Reg: 2013/211135/07 VAT No: 4160278950
34 Harries Street, Plumstead, Cape Town, 7945
Tel: +27 (0)87 073 5739 Email: info@ctsheritage.com Web: www.ctsheritage.com



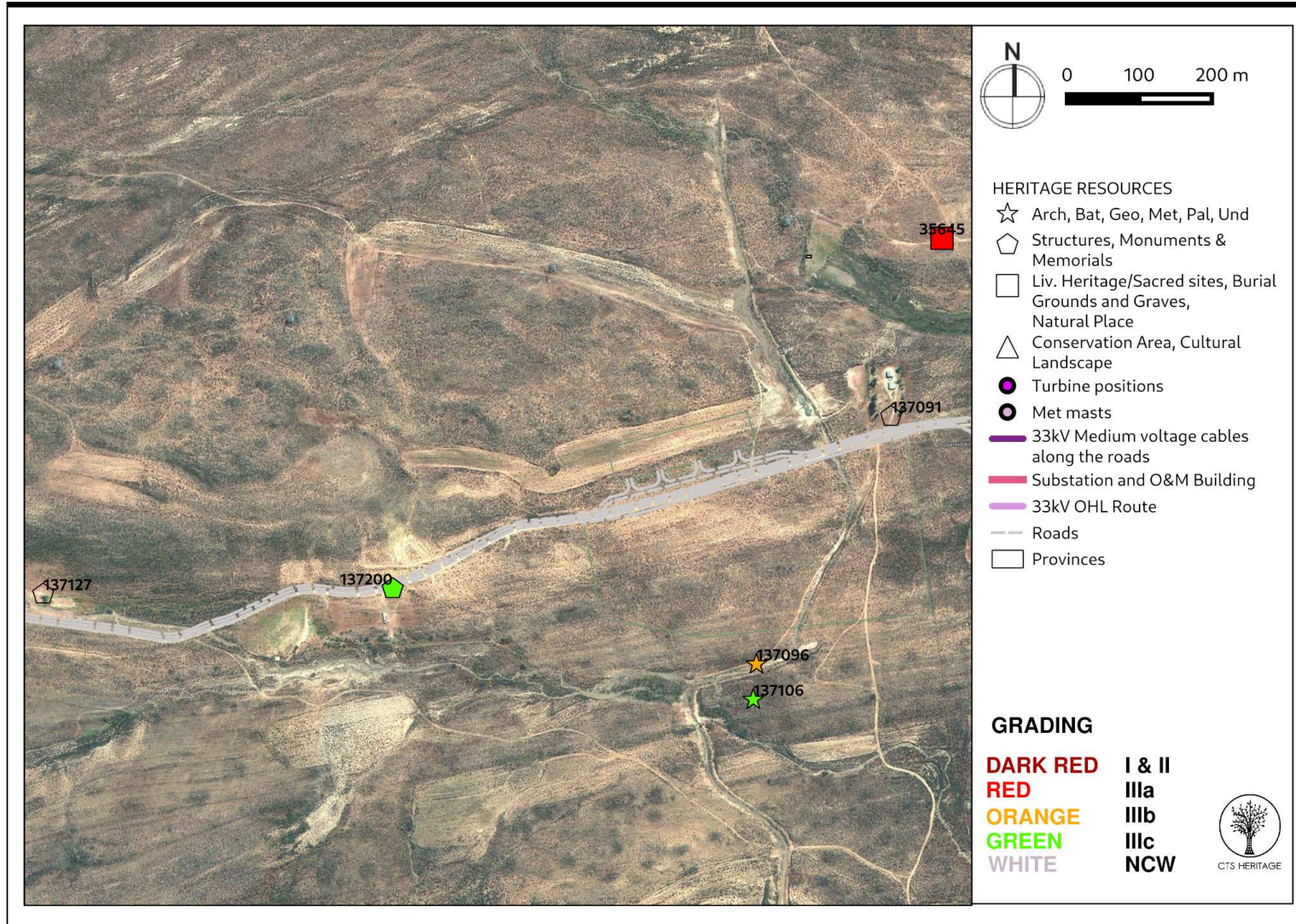
CTS HERITAGE



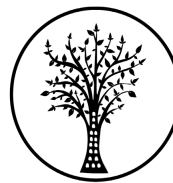
Map 4: Known heritage resources overlain with the proposed amended layout (refer to Walkdown Report September 2021 for the Site details)



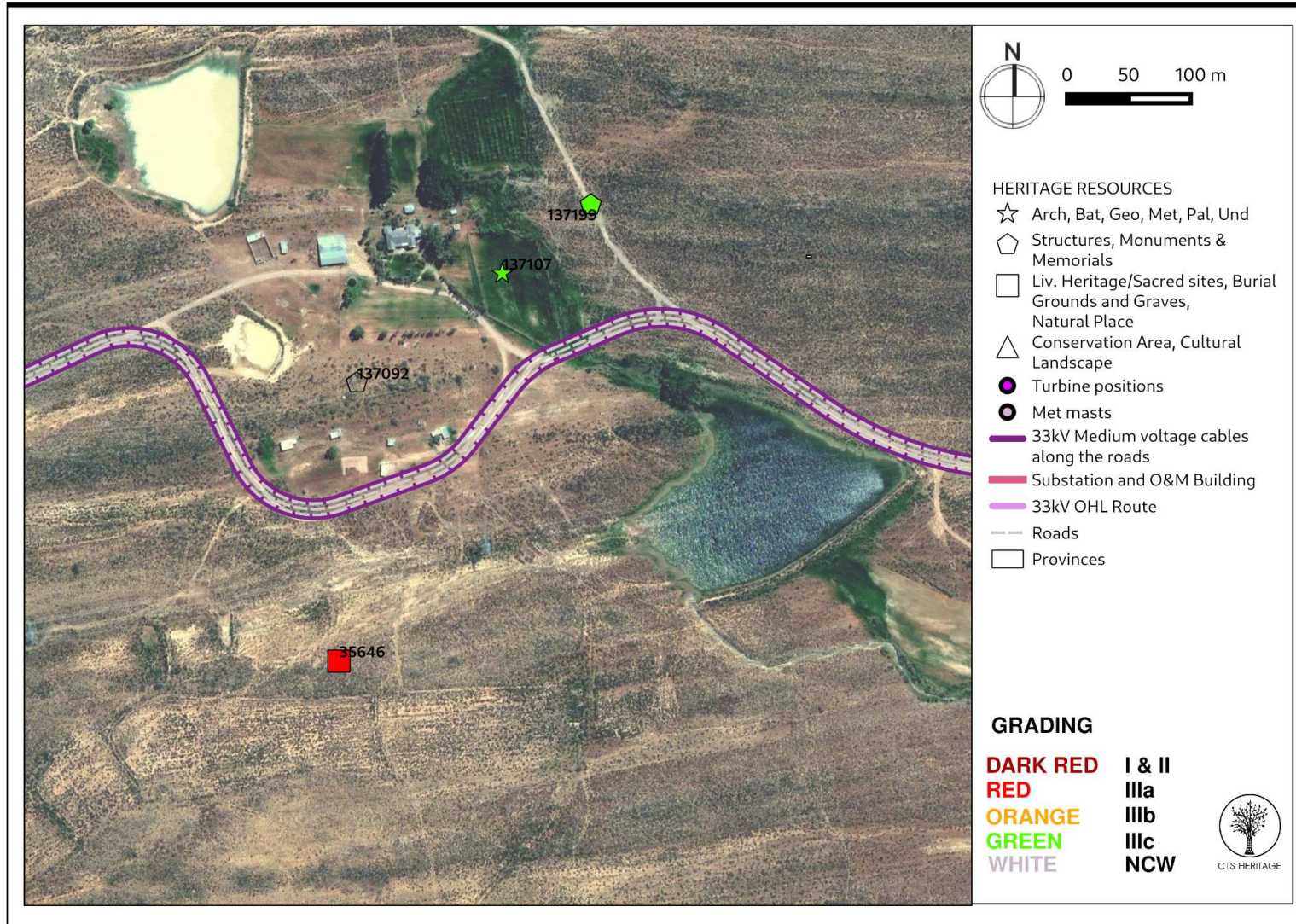
CTS HERITAGE



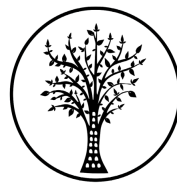
Map 4a: Known heritage resources overlain with the proposed amended layout - Inset A



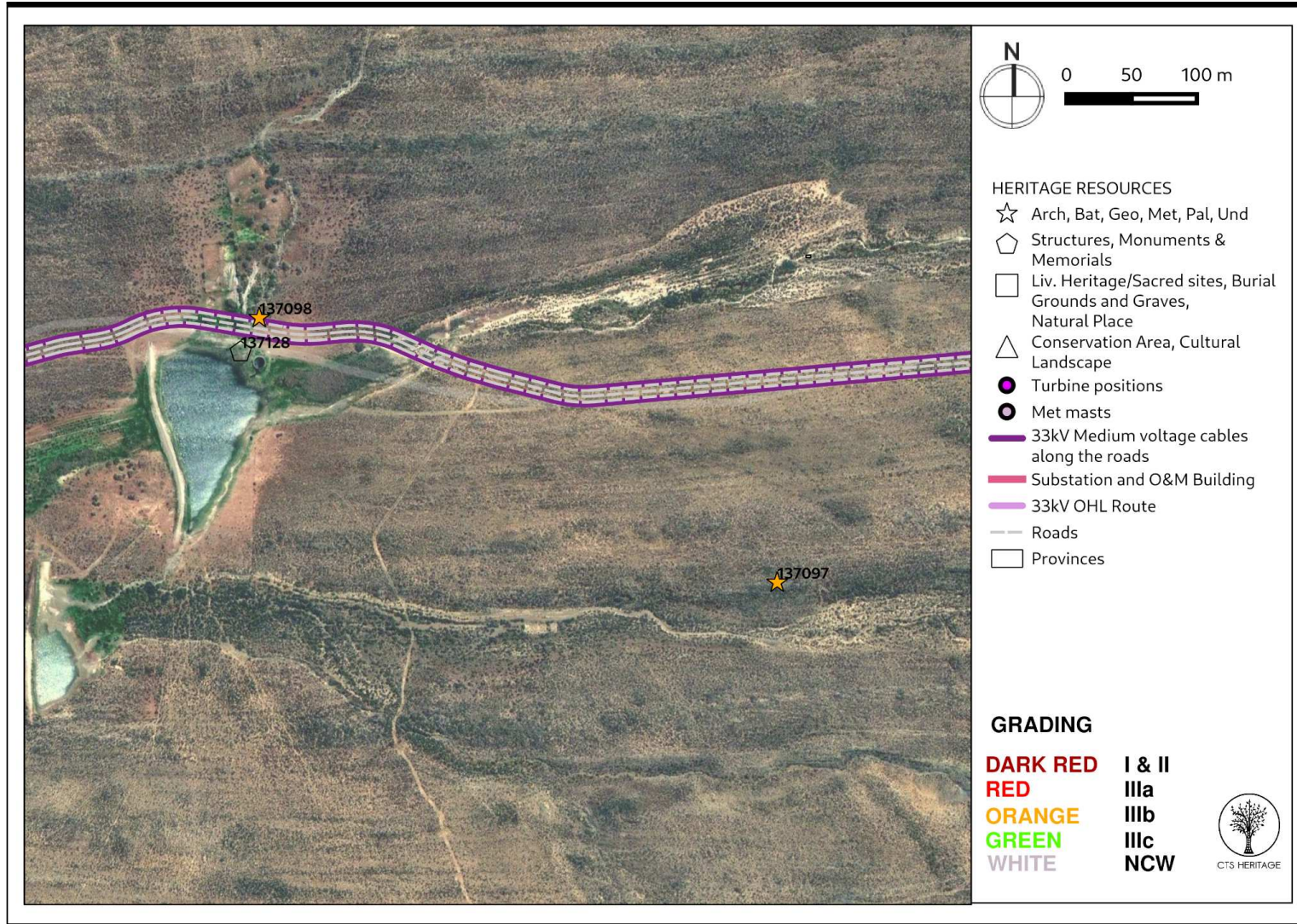
CTS HERITAGE



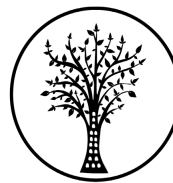
Map 4b: Known heritage resources overlain with the proposed amended layout - Inset B



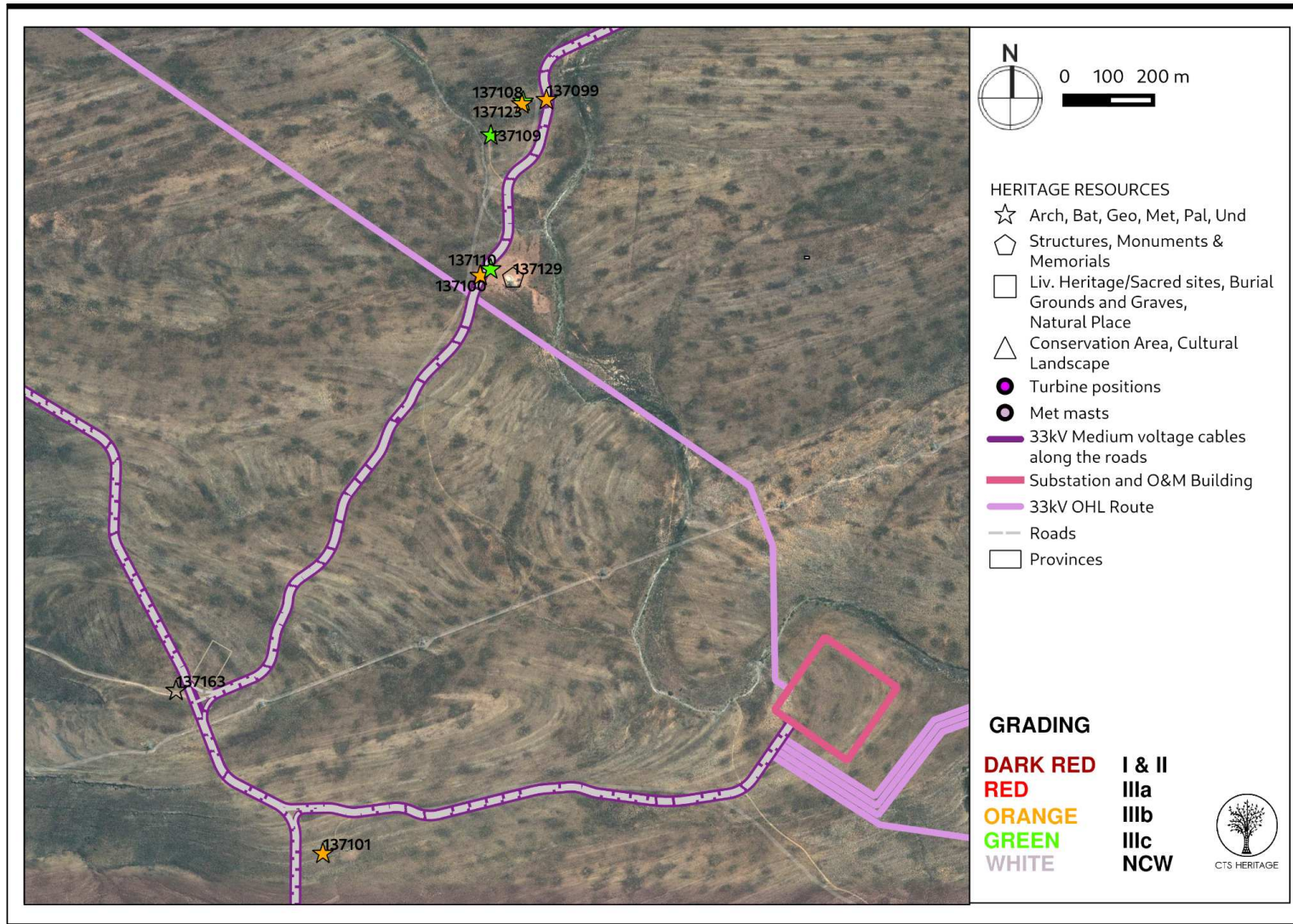
CTS HERITAGE



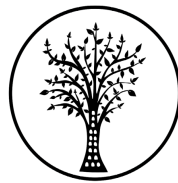
Map 4c: Known heritage resources overlain with the proposed amended layout - Inset C



CTS HERITAGE



Map 4d: Known heritage resources overlain with the proposed amended layout - Inset D



CTS HERITAGE

14 April 2022

Ashlea Strong
WSP

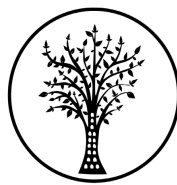
Dear Ms Strong,

RE: AMENDED LAYOUT FOR THE APPROVED BRANDVALLEY WEF NEAR MATJIESFONTEIN IN THE WESTERN AND NORTHERN CAPE

Brandvalley Wind Farm (Pty) Ltd, a subsidiary of G7 Renewable Energies (Pty) Ltd, has received approval to develop a 140 megawatt (MW) Wind Energy Facility (WEF) near Laingsburg, on the border of the Northern Cape Province and the Western Cape Province in South Africa. The authorised WEF is located in the Karoo Hoogland, the Witzenberg (Ceres) and the Laingsburg Local Municipalities, which fall within the Namakwa, the Cape Winelands and the Central Karoo District Municipalities, respectively. It comprises of up to 58 turbines, with a generating capacity of between 1.5MW and 4MW each.

The Brandvalley Wind Energy Facility (WEF) is proposed on the border of the Northern Cape and Western Cape along the R354 road which connects Matjiesfontein to Sutherland. This project is the third phase (Phase 3) of a series of projects which started in 2011 with the proposed establishment of the Roggeveld Wind Energy Facility (CaseID 473). The original Roggeveld WEF project was broken down into smaller WEFs in 2013. The first of these was the Roggeveld Wind Farm Phase 1 (CaseID 4503). This was followed by the Karreebosch Wind Energy Project (Roggeveld Phase 2) (CaseID 6884) in 2014/2015. The proposed Brandvalley and Rietkloof WEFs are Phases 3 and 4 of the original project although the extent of the farms affected by the various developments have changed since the inception of the project.

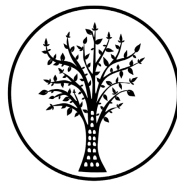
EA was granted for the Brandvalley WEF on 23 November 2016. In the EA, various requirements were stipulated in terms of impacts to Historical, Cultural and Palaeontological sites. In their responses, both SAHRA and HWC, as well as the EA, required that the Final Layout of the proposed development be subject to a walkdown by an archaeologist. This walkdown was completed by CTS Heritage between 24 and 28 July 2021 with the Walkdown Report completed in September 2021. Subsequent to the completed walkdown assessment, the layout was amended in November 2021 and again in April 2022.



CTS HERITAGE

Table 1: EA requirements for Heritage

| <i>EA Requirements</i> | <i>Implementation</i> |
|--|---|
| A 30m buffer must be applied around all identified archaeological sites | Adhered to in the final layout |
| After initial vegetation clearance has taken place but before the ground is levelled for construction, a professional palaeontologist must undertake a walkthrough and document any identified paleontological findings. The survey/walkthrough must be conducted as per the South African Heritage Resources Agency (SAHRA) requirements. | At construction |
| Should any archaeological sites, artefacts, paleontological fossils or graves be exposed during construction work, work in the immediate vicinity of the find must be stopped, SAHRA must be informed and the services of an accredited heritage professional obtained for an assessment of the heritage resources to be made | During construction |
| Construction managers/foremen must be informed before construction starts on the possible types of heritage sites and cultural material that may be encountered and the procedures to follow when they find sites. | At construction |
| All buffers and no-go areas stipulated in this report must be adhered to for both the facilities and all roads and powerlines. | During construction |
| Should any human remains be uncovered during development they must be immediately protected in situ and reported to the heritage authorities or to an archaeologist. The remains will need to be exhumed at the cost of the developer. | During construction |
| All construction and maintenance crew and vehicles (except small vehicles which may use existing farm tracks) should be kept out of the buffer zones. | During construction |
| The final layout should be shown to the appointed archaeologist before implementation to confirm that all significant heritage resources have been adequately protected. | Final Layout Walkdown Report drafted September 2021 |



CTS HERITAGE

The proposed amendments consist of minor deviations (maximum deviation of approx. 600m). As with the previous layout, some of the heritage resources known from this area are located along the proposed road alignments. The road alignments have been slightly amended in the proposed amended layout, however it is not anticipated that these amended road alignments will negatively impact on significant archaeological heritage.

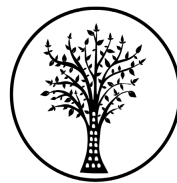
This letter is therefore drafted to confirm that the amended layout dated April 2022 for the Brandvalley WEF does not impact any known heritage resources and adheres to the recommendations included in the CTS Heritage Walkdown report for this development (September 2021) which concludes that “The final layout for the Brandvalley WEF avoids impact to all known significant heritage resources present within the development area. The walkdown of the final layout revealed no new significant heritage resources that are likely to be impacted. It is therefore recommended that this report is accepted as satisfying this condition of the Environmental Authorisation issued for the Brandvalley West WEF project.”

Please see the attached maps as confirmation.

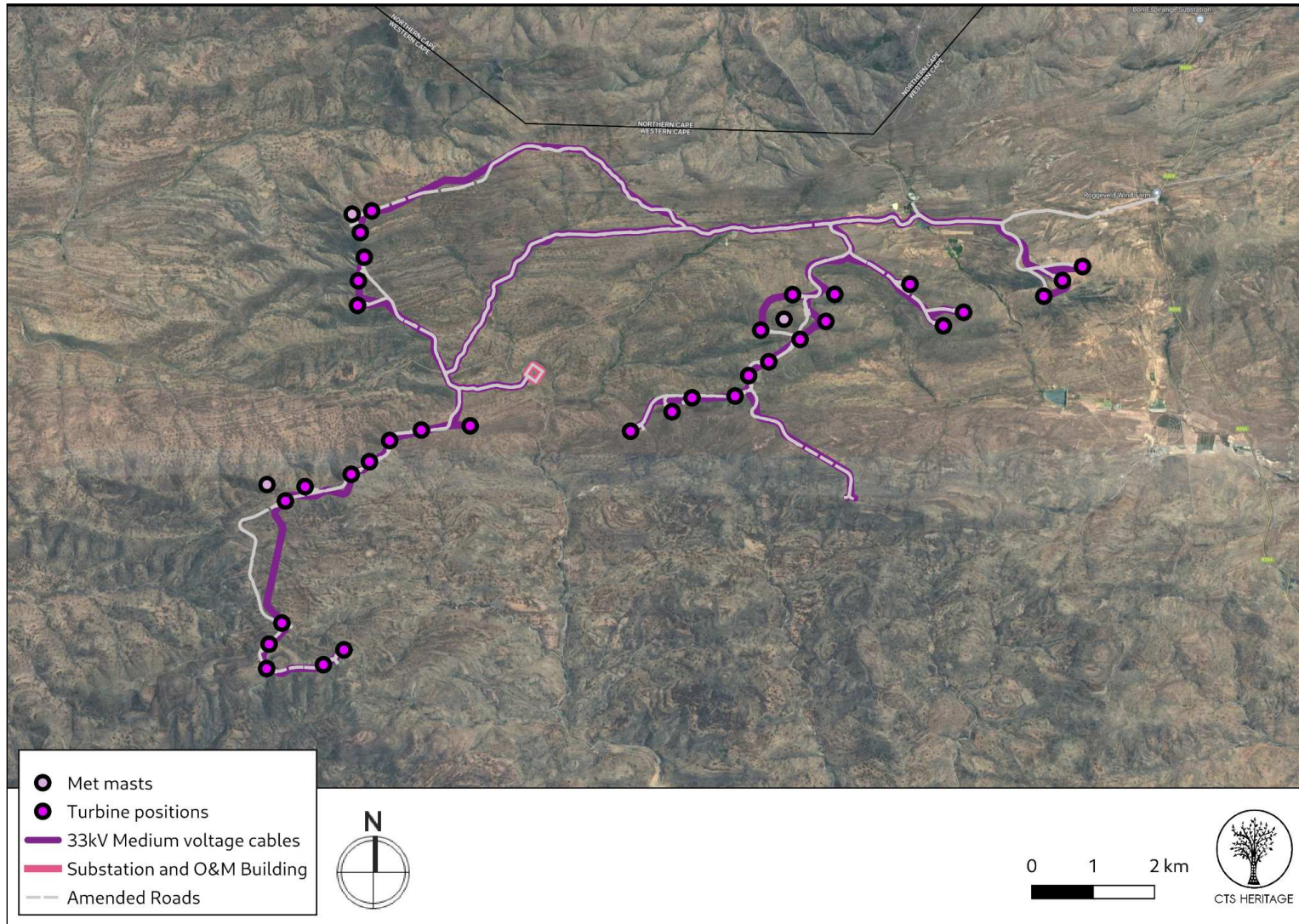
Please feel free to contact me should you have any further questions or concerns in this regard.

Yours sincerely

Jenna Lavin
Archaeologist
Heritage Assessment Practitioner

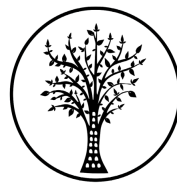


CTS HERITAGE

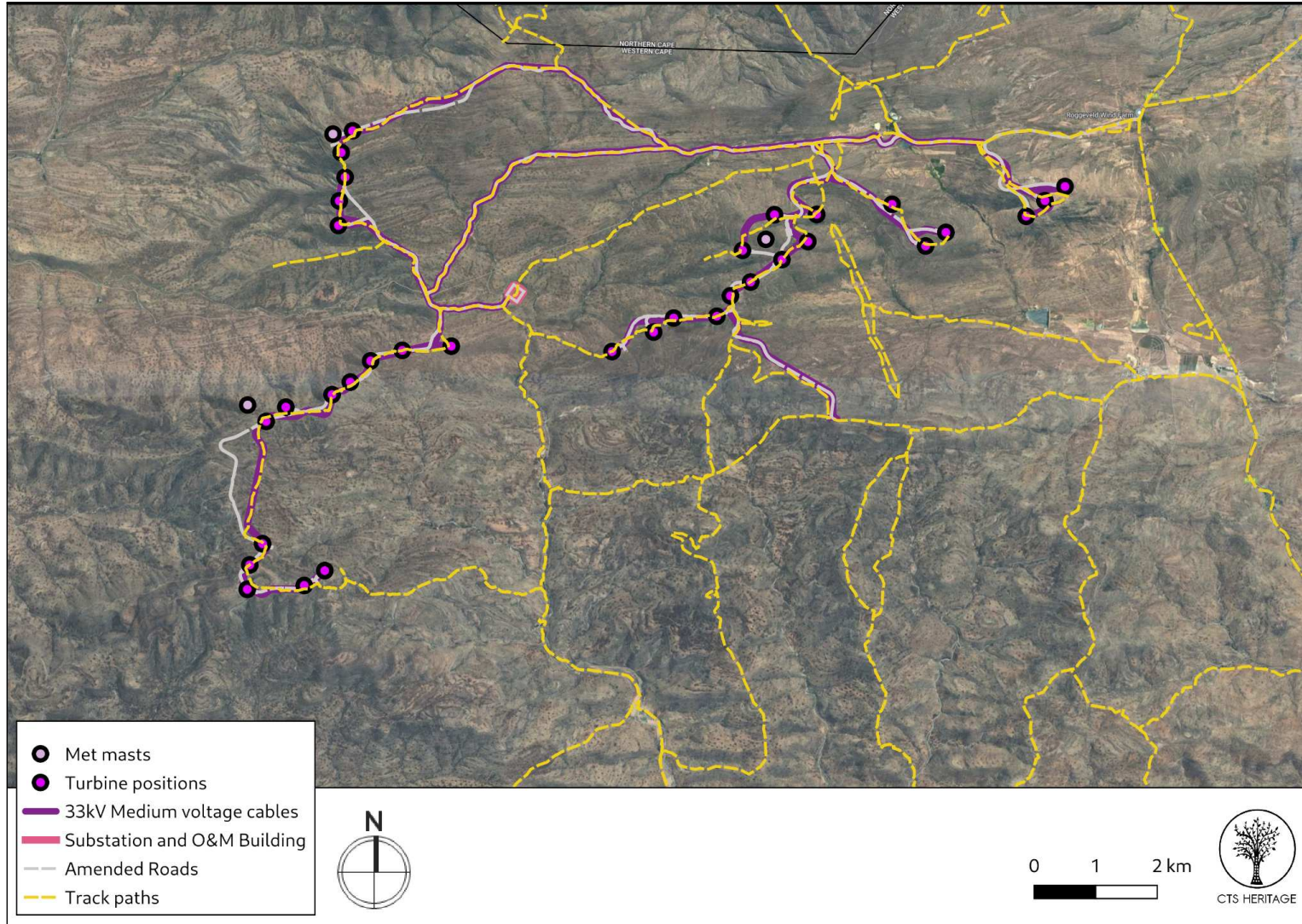


Map 1: Amended final layout of the Brandvalley WEF

Cedar Tower Services (Pty) Ltd t/a CTS Heritage
Reg: 2013/211135/07 VAT No: 4160278950
34 Harries Street, Plumstead, Cape Town, 7945
Tel: +27 (0)87 073 5739 Email: info@ctsheritage.com Web: www.ctsheritage.com

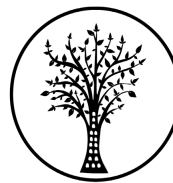


CTS HERITAGE

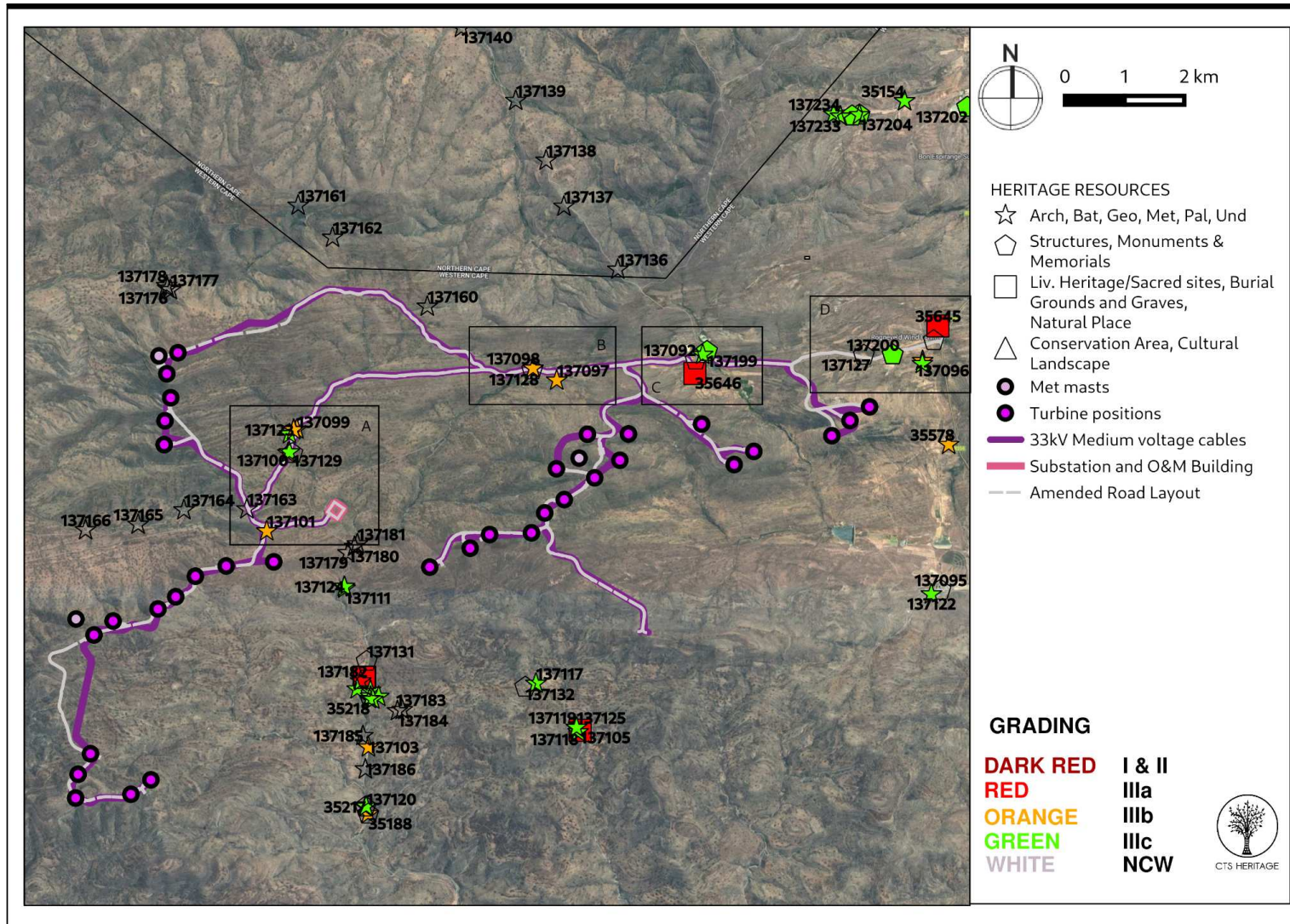


Map 2: Track paths followed for the walkdown of the Final Layout

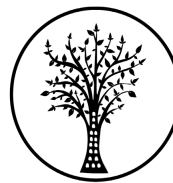
Cedar Tower Services (Pty) Ltd t/a CTS Heritage
Reg: 2013/211135/07 VAT No: 4160278950
34 Harries Street, Plumstead, Cape Town, 7945
Tel: +27 (0)87 073 5739 Email: info@ctsheritage.com Web: www.ctsheritage.com



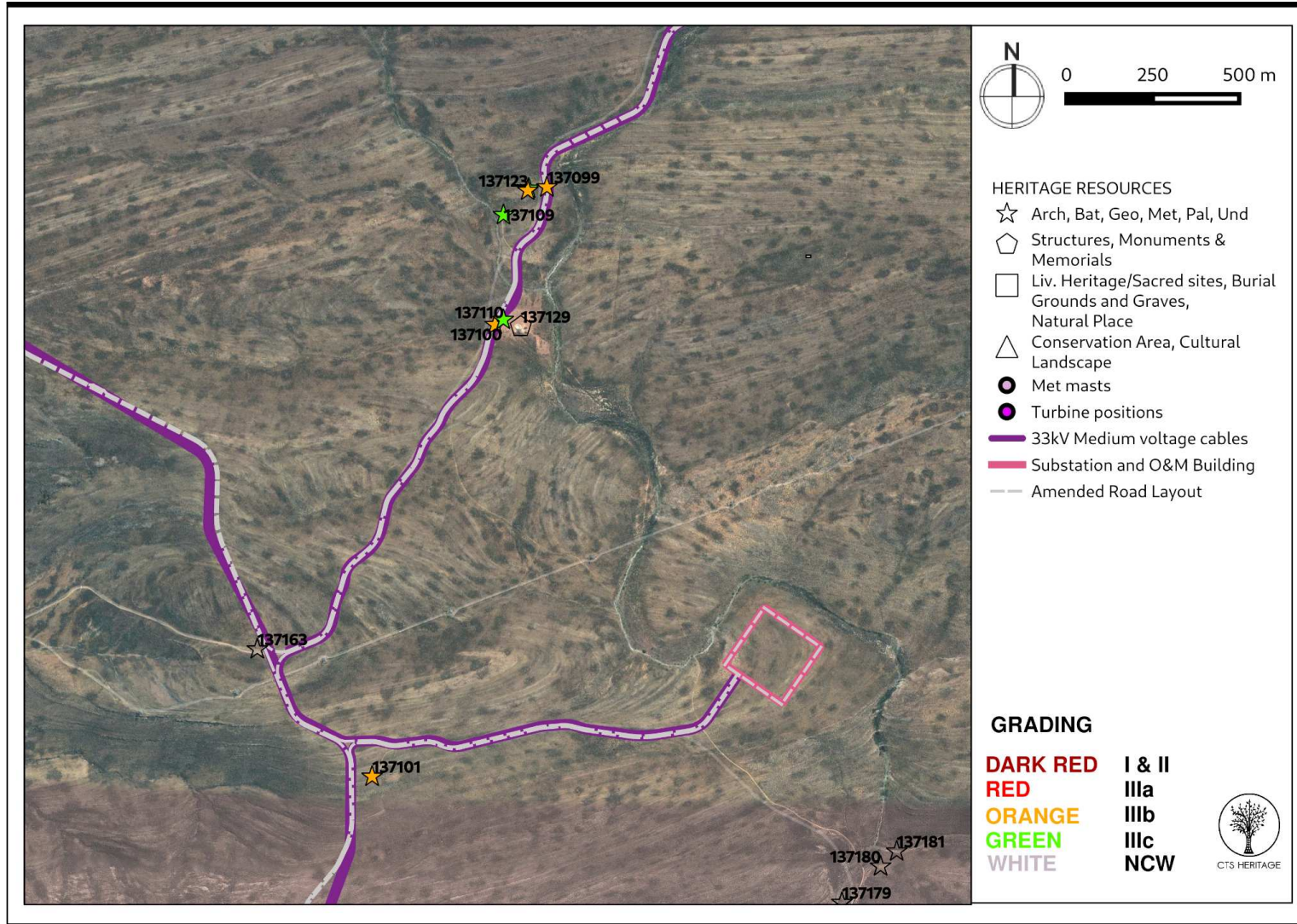
CTS HERITAGE



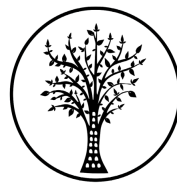
Map 3: Known heritage resources overlain with the proposed amended layout (refer to Walkdown Report September 2021 for the Site details)



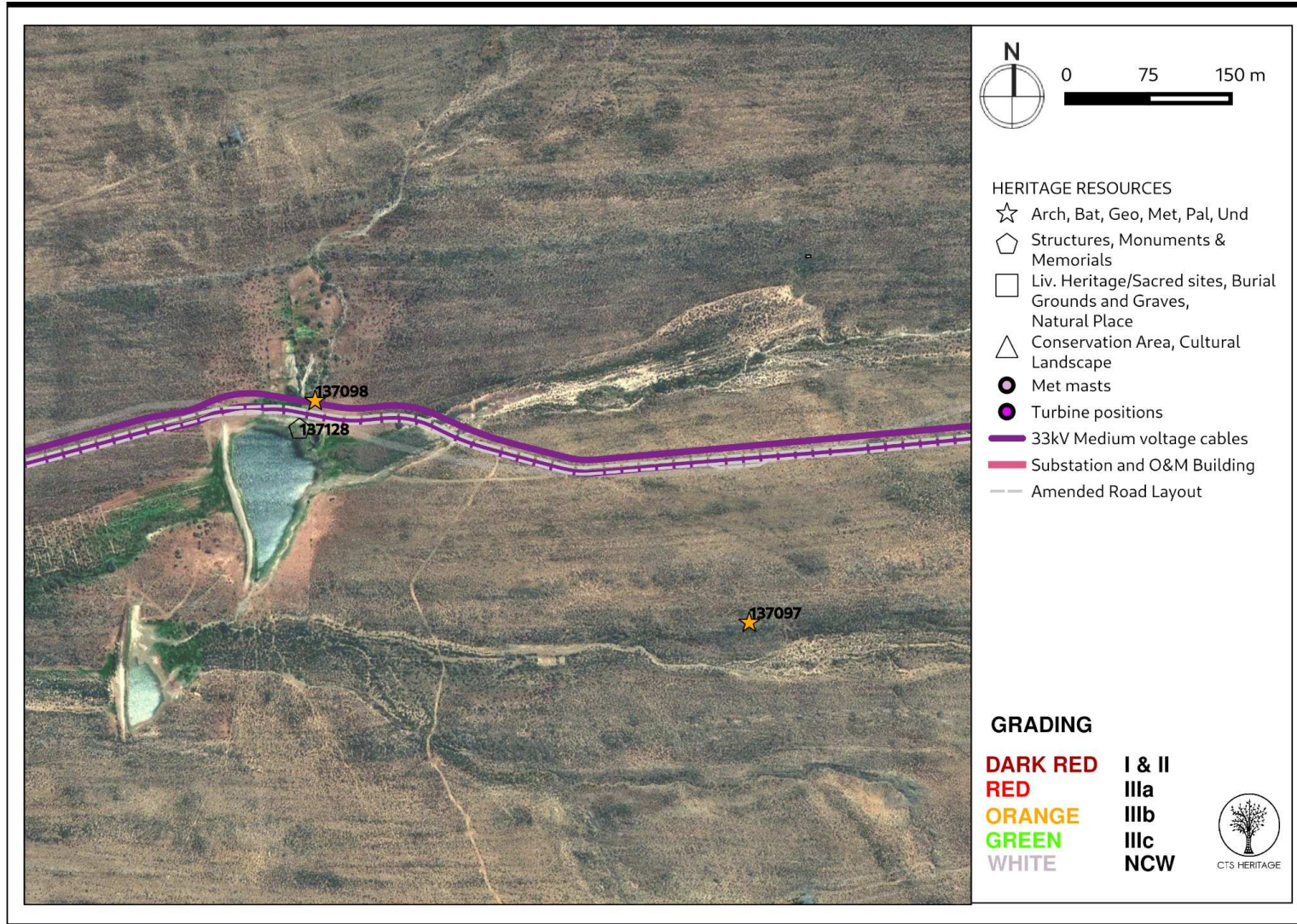
CTS HERITAGE



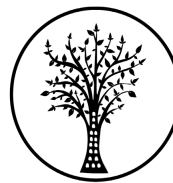
Map 3a: Known heritage resources overlain with the proposed amended layout - Inset A



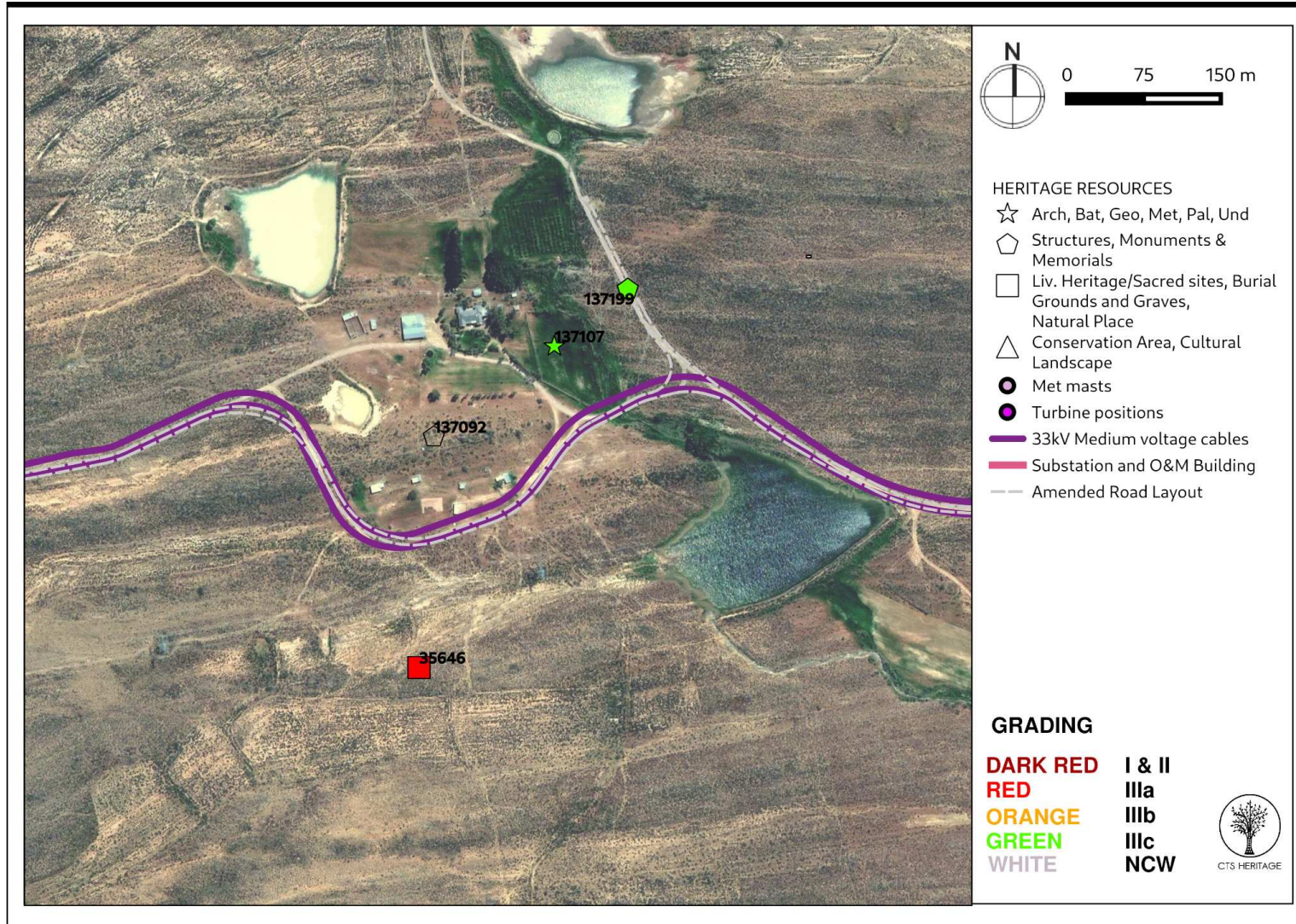
CTS HERITAGE



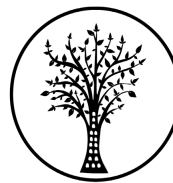
Map 3b: Known heritage resources overlain with the proposed amended layout - Inset B



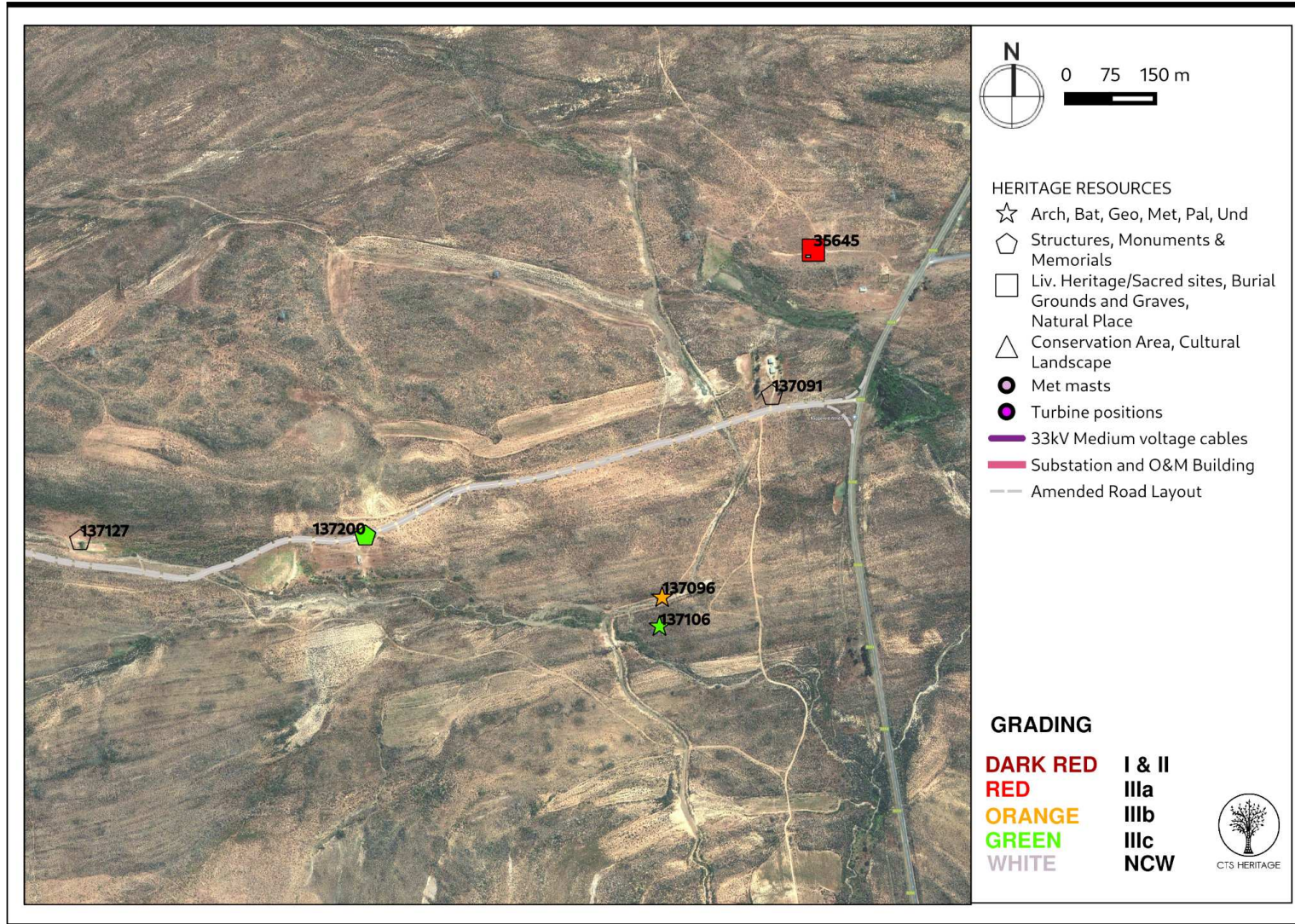
CTS HERITAGE



Map 3c: Known heritage resources overlain with the proposed amended layout - Inset C



CTS HERITAGE



Map 3d: Known heritage resources overlain with the proposed amended layout - Inset D