

Site Notice:

NOTIFICATION: ENVIRONMENTAL AUTHORIZATION APPLICATION PROCESS.

In accordance with the requirements of Chapter 6 of the Environmental Impact Assessment (EIA) Regulations (Government Notice R982 as amended, promulgated under the National Environmental Management Act 107 of 1998-NEMA), notice is herewith given of an application/s which will be subjected to a public participation process.

Mulilo Renewable Project Developments (Pty) Ltd (hereafter referred to as Applicant) has appointed Environmental Impact Management Services (Pty) Ltd (EIMS) as the Environmental Assessment Practitioner (EAP) to assist with undertaking the required environmental authorization processes, including the statutory public participation, and to compile and submit the required documentation in support of applications for:

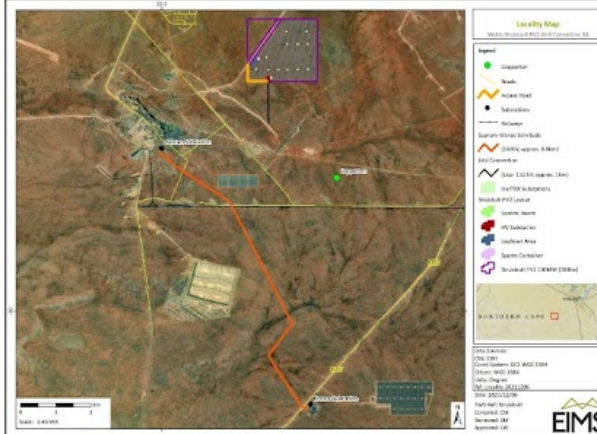
Applications:

- Environmental Authorisation (EA) in accordance with the NEMA- Listed activity/ies: NEMA GNR 983: Activity 11.
- Water Use Licence (WUL) in accordance with the National Water Act (Act 36 of 1998 – NWA): Listed Water uses: Section 21 (c) and Section 21 (i) (if applicable)
- Update of the Environmental Management Programme (EMP) and layout.

Additional listed activities end/or water uses may be identified during the process.

Activity: The Applicant is in the process of preparing Struisbult PV2 solar facility for a private off-taker. One of the Eskom conditions received for connecting the project to the grid is to build an additional 8.8 km 132 kV line between Kronos and Cuprum substations. The Applicant proposes construction of the required 132 kV line alongside an existing powerline servitude with associated grid connection infrastructure as follows:

- An access road to the Struisbult PV2 Substation;
- An approximately 1 km Loop-In Loop-Out line (LULO); and
- An approximately 8.8 km 132 kV Transmission Line along the existing Kronos-Cuprum Transmission Line.



OMGAWING KENNISGEWING: VOORGESTELDE KROKONTREIN REGTE AANSOEK VIR OMGAWINGSMACTIGING

Kennis-geekied hiermee in terme van Hoofstuk 6 van die Regulasies oor Omgawingsimpakbeoordeling, 2014, uitgevaardig kragtens die Nasionale Wet op Omgawingsbestuur (Wet 107 van 1998) (NEMA), soos gewysig vir aansoek om Omgawingsmagtiging (EA).

Mulilo Renewable Project Developments (Edms) Bpk (hierna bekend as Aansoeker) het Environmental Impact Management Services (Edms) Bpk (EIMS) as die Omgawingsassesseringspraktisyn (EAP) aangestel om te help met die onderneem van die vereiste omgawingsmagtigings proses, insluitend die statutêre publieke deelname, en om die nodige dokumentasie voor te berei en in te dien ter ondersteuning van aansoek vir:

Aansoek:

- Omgawingsmagtiging (EA) in ooreenstemming met die Wet op Nasionale Omgawingsbestuur (Wet 107 van 1998 – NEMA) – Gelyke aktiwiteit: GNR983 Noteringskennisgewing 1: Aktiwiteit 11.
- Watergebruiksensie (WUL) ooreenkomstig die Nasionale Waterwet (Wet 36 van 1998 – NWA): Gelyke Watergebruik: Artikel 21 (c) en Artikel 21 (i) (indien van toepassing).
- Opdatering van die Omgawingsbestuursprogram (EMP) en aaltig.

Bykomende gelyke aktiwiteite en/of watergebruik kan tydens die proses geïdentifiseer word.

Aktiwiteit: Die Aansoeker is in die proses om Struisbult PV2 sonkragfasiliteit vir 'n private geleëner voor te berei. Een van die Eskom voorwaardes om die projek aan die kragnetwerk te koppel, is om 'n bykomende 8,8 km 132 kV lyn tussen Kronos en Cuprum-substasies te bou. Die Aansoeker stel die konstruksie van die vereiste 132 kV lyn langs 'n bestaande kraglyn servituut voor met gepaardgaande verbinding infrastruktuur soos volg:

- 'n Toegangspad na die Struisbult PV2 Substasie;
- 'n Ongeveer 1 km Loop-in Loop-Out lyn (LULO); en
- 'n Ongeveer 8,8 km 132 kV Transmissie lyn langs die bestaande Kronos-Cuprum Transmissie lyn.

Location: The proposed project site is within the following properties: Farm Vogelstruisbult 104, Farm Klippats Pan 117 and Farm Hoekplaas 146 near Copperton, Siyathemba Local Municipality, Northern Cape.

Site	Start	Middel	End
Access road to the Struisbult PV2 Substation	29°56'16.91"S and 22°19'20.32"E	29°56'31.73"S and 22°19'20.36"E	29°56'31.76"S and 22°19'37.80"E
LULO Line	29°56'31.94"S and 22°19'38.99"E	29°56'40.14"S and 22°19'39.43"E	29°57'9.54"S and 22°19'39.64"E
New 132 kV Transmission Line	30°01'25.43"S and 22°20'17.36"E	29°59'24.65"S and 22°19'39.06"E	29°57'33.45"S and 22°18'02.27"E

EIMS will be following the procedures defined in the Environmental Impact Assessment (EIA) Regulations (GNR982 of 2014, as amended) for undertaking of a Basic Assessment and EMP update process. In accordance with Chapter 6 of the EIA Regulations, a public participation process will be undertaken. You are hereby invited to register and comment on the proposed project and application/s. In order to ensure that you are identified and registered as an Interested and Affected Party (I&AP) and that your comments are captured, please submit your name, contact details, the reason for your interest or any comments, in writing or telephonically, to EIMS by no later than 28 January 2022. Please note that only registered I&AP's will be informed of future project information and opportunities for participation. By registering as an I&AP you consent to the collection and processing of your personal information as per the EIMS Privacy notice available at www.eims.co.za/public-participation. In order to avoid missing out on opportunities for public participation please submit I&AP registrations, or any queries, comments, or concerns with regards to this application, as soon as possible to EIMS at:

EIMS Contact Details / EIMS Kontakbesonderhede:

Environmental Impact Management Services (Pty) Ltd (EIMS)
 Contact Person/ Kontak Persoon: Sinalo Matshona
 Postal Address/Posadres: Posbus 2083, Pirajagwale, 2123

Phone/ Telefoon: 011 789 7170 Fax/ Faks: 011 787 3059
 EIMS Reference Number/ EIMS Vervysingsnommer: 1480
 Email/ Epos: struisbult@eims.co.za

Ligging: Die voorgestelde projekterrein is binne die volgende eiendomme: Plaas Vogelstruisbult 104, Plaas Klippats Pan 117 en Plaas Hoekplaas 146 naby Copperton, Siyathemba Plaaslike Munisipaliteit, Noord-Kaap.

Terrein	Begin	Middel	Einde
Toegangspad na die Struisbult PV2 Substasie	29°56'16.91"S en 22°19'20.32"E	29°56'31.73"S en 22°19'20.36"E	29°56'31.76"S en 22°19'37.80"E
LULO lyn	29°56'31.94"S en 22°19'38.99"E	29°56'40.14"S en 22°19'39.43"E	29°57'9.54"S en 22°19'39.64"E
Nuwe 132 kV Transmissie lyn	30°01'25.43"S en 22°20'17.36"E	29°59'24.65"S en 22°19'39.06"E	29°57'33.45"S en 22°18'02.27"E

EIMS sal die prosedures volg wat in die Omgawingsimpakassesseringsregulasies (GNR982 van 2014, soos gewysig) gedefinieer word vir die onderneem van 'n Basiese Assesering- en EMP-opdateringsproses. In ooreenstemming met hoofstuk 6 van die GIS Regulasies, sal 'n publieke deelname proses onderneem word. U word hiermee uitgenooi om te registreer en kommentaar te lewer op die voorgestelde projek en aansoek/e. Ten einde te verseker dat u geïdentifiseer en geregistreer is as 'n Belanghebbende en Geaffekteerde Party (I&AP) en dat u kommentaar opgevoeg word, dien asseblief u naam, kontakbesonderhede, die rede vir u belangstelling of enige kommentaar, skriftelik of telefonies, aan EIMS teen nie later nie as 28 Januarie 2022. Let asseblief daarop dat slegs geregistreerde I&AP's ingelig sal word oor toekomstige projek inligting en geleenthede vir deelname. Deur te registreer as 'n I&AP stem u in tot die versameling en verwerking van jou persoonlike inligting soos per die EIMS Privaatheids kennisgewing beskikbaar by www.eims.co.za/public-participation. Ten einde te verseker dat u geleentheid het om deel te neem aan die publieke deelname, dien asseblief I&AP registrasies, of enige navraag, kommentaar, of bekommernisse met betrekking tot hierdie aansoek, so gou as moontlik aan EIMS by:



Locality Map:



09/12/2021 13:46:00; GPS Coordinates: -30.022102, 22.338157

b10374a0.Photo.114717

A1 Near



A1 Far

09/12/2021 14:37:00; GPS Coordinates: -29.973302, 22.319813



A1 Near



A1 Far

09/12/2021 14:52:00; GPS Coordinates: -29.957141, 22.320419



A1 Near



A1 Far

09/12/2021 15:34:00; GPS Coordinates: -29.920857, 22.297084

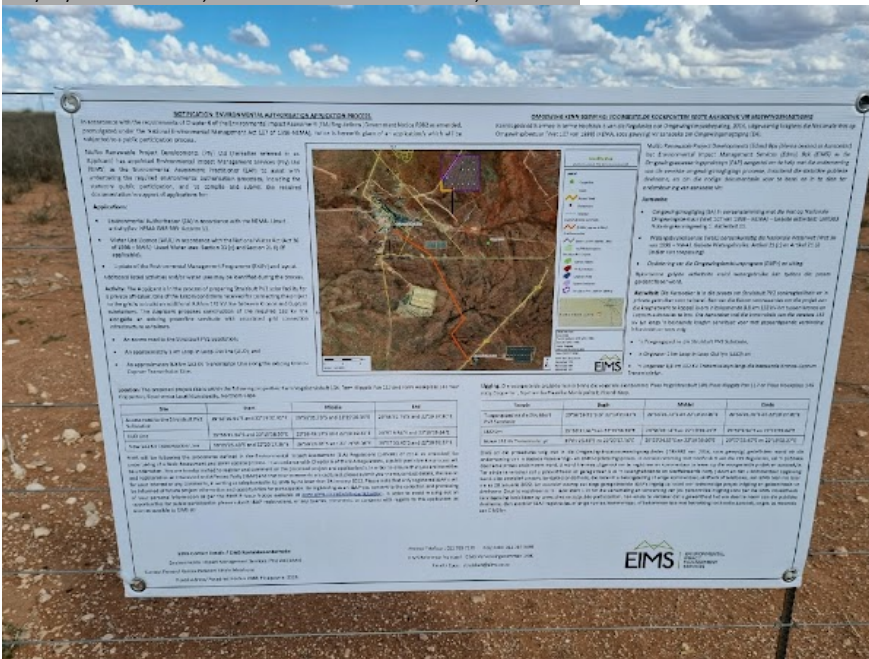


A1 Near



A1 Far

09/12/2021 15:52:00; GPS Coordinates: -29.937900, 22.322456



A1 Near



A1 Far

10/12/2021 06:56:00; GPS Coordinates: -29.958352, 22.302147



A1 Near



A1 Far