

9 December 2021

Our ref: 1480/GP/sm

To whom it may concern

Dear Sir or Madam:

NOTIFICATION REGARDING OPPORTUNITY TO PARTICIPATE IN THE ENVIRONMENTAL AUTHORISATION APPLICATION PROCESS FOR THE PROPOSED MULILO STRUISBULT PV2 PROJECT, IN THE SIYATHEMBA LOCAL MUNICIPALITY, WITHIN THE PIXLEY KA SEME DISTRICT MUNICIPALITY, NORTHERN CAPE, SOUTH AFRICA.

Mulilo Renewable Project Developments (Pty) Ltd (hereafter referred to as Applicant) has appointed Environmental Impact Management Services (Pty) Ltd (EIMS) as the Environmental Assessment Practitioner (EAP) to assist with undertaking the required environmental authorisation processes, including the statutory public participation, and to compile and submit the required documentation in support of applications for:

- Environmental Authorisation (EA) in accordance with the National Environmental Management Act (Act 107 of 1998 – NEMA) – Listed activity:
 - GNR983 Listing Notice 1: Activity 11.
- Water Use Licence (WUL) in accordance with the National Water Act (Act 36 of 1998 – NWA):
 - Listed Water uses: Section 21 (c) and Section 21 (i) (if applicable).
- Update of the Environmental Management Programme (EMPr) and layout.

Additional listed activities and/or water uses may be identified during the process.

The Applicant is in the process of preparing Struisbult PV2 solar facility for a private off-taker. One of the Eskom conditions received for connecting the project to the grid is to build an additional 8.8 km 132 kV line between Kronos and Cuprum substations. The Applicant proposes construction of the required 132 kV line alongside an existing powerline servitude with associated grid connection infrastructure as follows:

- An access road to the Struisbult PV2 Substation;
- An approximately 1 km Loop-In Loop-Out line (LILO); and
- An approximately 8.8 km 132 KV Transmission Line along the existing Kronos-Cuprum Transmission Line.

The proposed project site is within the following properties: Farm Vogelstruisbult 104, Farm Klipgats Pan 117 and Farm Hoekplaas 146 near Copperton, Siyathemba Local Municipality, Northern Cape.

- The access road to the Struisbult PV2 Substation has the following coordinates:
 - Start: 29°56'16.91"S and 22°19'20.32"E;
 - Middle: 29°56'31.73"S and 22°19'20.36"E; and
 - End: 29°56'31.76"S and 22°19'37.80"E.

A 8 Dalmeny Road, Pine Park, Randburg | PO Box 2083, Pinetown 2123, South Africa
T (011) 789-7170 | F (086) 571- 9047

A Regus Business Centre, 14 Stewart Drive, Berea, East London | PO Box 19731, Tecoma, 5214, South Africa
T (043) 783-9826 | F (086) 571- 9047

W www.eims.co.za | E mail@eims.co.za | Co Reg 1992/005927/07 | VAT 489 013 9027

Directors: L Whitlow, A Smith.

- The LILO Line has the following coordinates:
 - Start: 29°56'31.94"S and 22°19'38.99"E;
 - Middle: 29°56'49.14"S and 22°19'39.43"E; and
 - End: 29°57'9.54"S and 22°19'39.64"E.
- The new 132 KV Transmission Line has the following coordinates:
 - Start: 30°01'25.43"S and 22°20'17.36"E;
 - Middle: 29°59'24.65"S and 22°19'39.06"E; and
 - End: 29°57'33.45"S and 22°18'02.27"E.

EIMS will be following the procedures defined in the Environmental Impact Assessment (EIA) Regulations (GRN982 of 2014, as amended) for undertaking of a Basic Assessment and EMPr update process. In accordance with Chapter 6 of the EIA Regulations, a public participation process will be undertaken.

You are hereby invited to register and comment on the proposed project and application/s. In order to ensure that you are identified and registered as an Interested and Affected Party (I&AP) and that your comments are captured, please submit your name, contact details, the reason for your interest or any comments, in writing or telephonically, to EIMS by no later than 28 January 2022. Please note that only registered I&AP's will be informed of future project information and opportunities for participation.

By registering as an I&AP you consent to the collection and processing of your personal information as per the EIMS Privacy Notice available at www.eims.co.za/public-participation. In order to avoid missing out on opportunities for public participation please submit I&AP registrations, or any queries, comments, or concerns with regards to this application, as soon as possible to EIMS at:

Contact Person: Sinalo Matshona

EIMS Reference Number: 1480

Postal Address: P.O. Box 2083; Pinetown; 2123

Telephone: (011) 789 7170/ Fax: (086) 571 9047

E-mail: struisbult@eims.co.za

Please include the project reference number 1480 in all correspondence.

Please feel free to contact the undersigned if you have any queries or concerns.

Sincerely,

Sinalo Matshona

9 Desember 2021

Ons verw.: 1480/GP/sm

Vir wie dit mag aangaan

Geagte Meneer of Mevrou:

KENNISGEWING RAKENDE DIE GELEENTHEID OM DEEL TE NEEM AAN DIE OMGEWINGSMAGTIGINGS AANSOEKPROSES VIR DIE VOORGESTELDE MULILO STRUISBULT PV2 PROJEK, IN DIE SIYATHEMBA PLAASLIKE MUNISIPALITEIT, BINNE DIE PIXLEY KA SEME-DISTRIKSMUNISIPALITEIT, NOORD-KAAP, SUID-AFRIKA.

Mulilo Renewable Project Developments (Edms) Bpk (hierna bekend as Aansoeker) het Environmental Impact Management Services (Edms) Bpk (EIMS) as die Omgewingsassesseringspraktisyn (EAP) aangestel om te help met die onderneming van die vereiste omgewingsmagtigings prosesse, insluitend die statutêre publieke deelname, en om die nodige dokumentasie voor te berei en in te dien ter ondersteuning van aansoeke vir:

- Omgewingsmagtiging (EA) in ooreenstemming met die Wet op Nasionale Omgewingsbestuur (Wet 107 van 1998 – NEMA) – Gelyste aktiwiteit:
 - GNR983 Noteringskennisgewing 1: Aktiwiteit 11.
- Watergebruikslisensie (WUL) ooreenkomstig die Nasionale Waterwet (Wet 36 van 1998 – NWA):
 - Gelyste Watergebruike: Artikel 21 (c) en Artikel 21 (i) (indien van toepassing).
- Opdatering van die Omgewingsbestuursprogram (EMPr) en uitleg.

Bykomende gelyste aktiwiteite en/of watergebruike kan tydens die proses geïdentifiseer word.

Die Aansoeker is in die proses om Struisbult PV2 sonkragfasiliteit vir 'n private gebruiker voor te berei. Een van die Eskom voorwaardes om die projek aan die kragnetwerk te koppel, is om 'n bykomende 8,8 km 132 kV-lyn tussen Kronos en Cuprum-substasies te bou. Die Aansoeker stel die konstruksie van die vereiste 132 kV lyn langs 'n bestaande kraglyn serwituuat voor met gepaardgaande verbinding infrastruktuur soos volg:

- 'n Toegangspad na die Struisbult PV2 Substasie;
- 'n Ongeveer 1 km Loop-In Loop-Out lyn (LILO); En
- 'n Ongeveer 8,8 km 132 KV Transmissielyn langs die bestaande Kronos-Cuprum Transmissielyn.

Die voorgestelde projekterrein is binne die volgende eiendom: Plaas Vogelstruisbult 104, Plaas Klipgats Pan 117 en Plaas Hoekplaas 146 naby Copperton, Siyathemba Plaaslike Munisipaliteit, Noord-Kaap.

- Die toegangspad na die Struisbult PV2 Substasie het die volgende koördinate:
 - Begin: 29°56'16.91"S en 22°19'20.32"E;
 - Middel: 29°56'31.73"S en 22°19'20.36"E; and
 - Einde: 29°56'31.76"S en 22°19'37.80"E.

- Die LILO Lyn het die volgende koördinate:
 - Begin: 29°56'31.94"S en 22°19'38.99"E;
 - Middel: 29°56'49.14"S en 22°19'39.43"E; and
 - Einde: 29°57'9.54"S en 22°19'39.64"E.
- Die nuwe 132 KV Transmissielyn het die volgende koördinate:
 - Begin: 30°01'25.43"S en 22°20'17.36"E;
 - Middel: 29°59'24.65"S en 22°19'39.06"E; and
 - Einde: 29°57'33.45"S en 22°18'02.27"E.

EIMS sal die prosedures volg wat in die Omgewingsimpakassesseringsregulasies (GRN982 van 2014, soos gewysig) gedefinieer word vir die onderneming van 'n Basiese Assesserings- en EMPr-opdateringsproses. In ooreenstemming met Hoofstuk 6 van die OIS Regulasies, sal 'n publieke deelname proses onderneem word.

U word hiermee uitgenooi om te registreer en kommentaar te lewer op die voorgestelde projek en aansoek/e. Ten einde te verseker dat u geïdentifiseer en geregistreer is as 'n Belanghebbende en Geaffekteerde Party (I&AP) en dat u kommentaar opgevang word, dien asseblief u naam, kontakbesonderhede, die rede vir u belangstelling of enige kommentaar, skriftelik of telefonies, aan EIMS teen nie later nie as 28 Januarie 2022. Let asseblief daarop dat slegs geregistreeerde I&AP's ingelig sal word oor toekomstige projekinligting en geleentheid vir deelname.

Deur te registreer as 'n I &AP stem u in tot die versameling en verwerking van jou persoonlike inligting soos per die EIMS Privaatheids kennisgewing beskikbaar by www.eims.co.za/public-participation. Ten einde te verseker dat u geleentheid het om deel te neem aan die publieke deelname, dien asseblief I&AP registrasies, of enige navrae, kommentaar, of bekommernisse met betrekking tot hierdie aansoek, so gou as moontlik aan EIMS by:

Kontak persoon: Sinalo Matshona

EIMS Verwysingsnommer: 1480

Posadres: Posbus 2083; Pinegowrie; 2123

Telefoon: (011) 789 7170/ Faks: (086) 571 9047

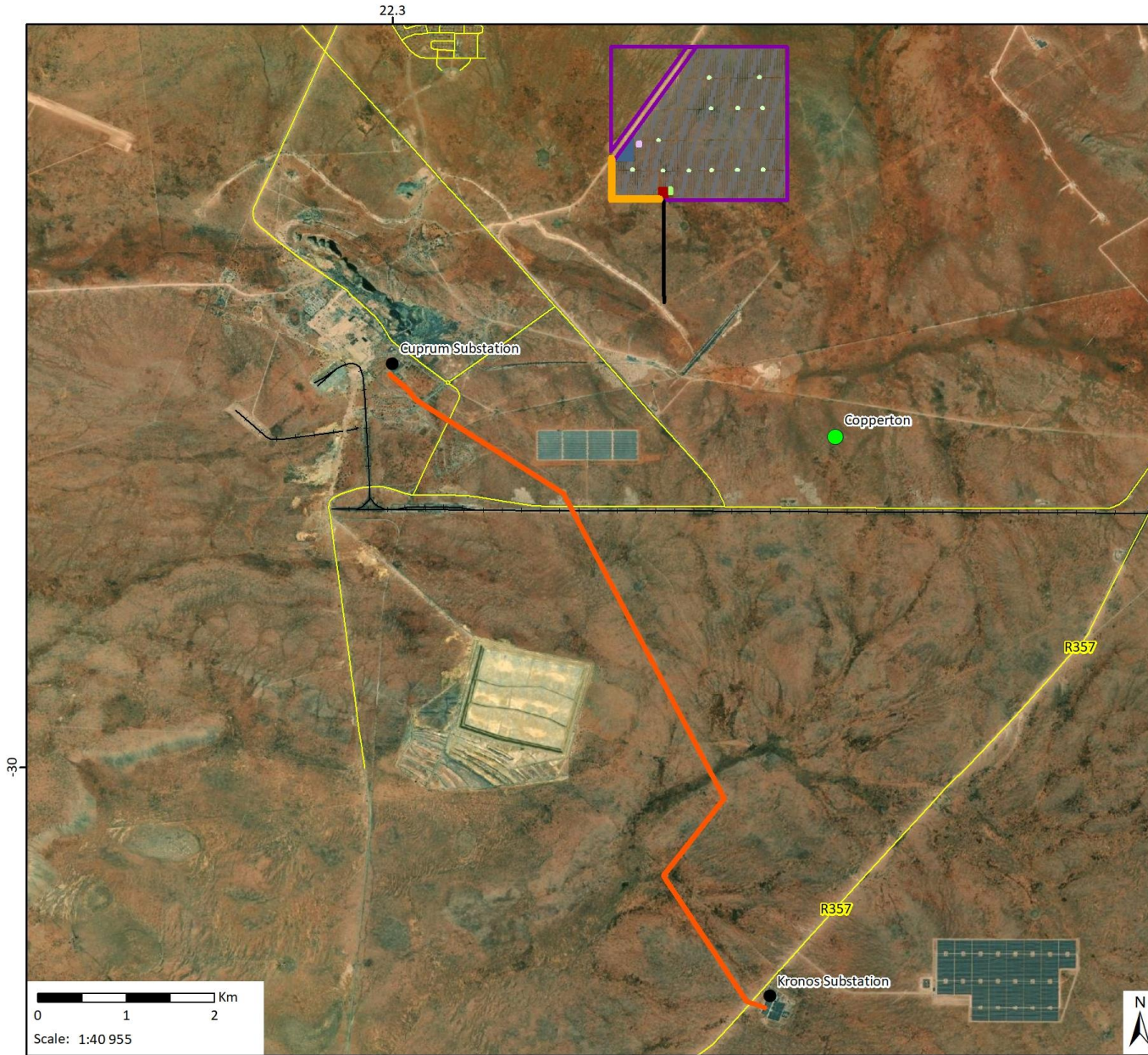
E-pos: struisbult@eims.co.za

Sluit asseblief die projek verwysingsnommer 1480 in alle korrespondensie in.

Kontak asseblief die ondergetekende as u enige navrae of bekommernisse het.

Vriendelike groete,

Sinalo Matshona



Locality Map

Mulilo Struisbult PV2 Grid Connection BA

- Legend**
- Copperton
 - Roads
 - Access Road
 - Substations
 - +— Railways
 - Cuprum-Kronos Servitude
 - (132kV; approx. 8.8km)
 - Grid Connection
 - (LiLo- 132 kV; approx. 1km)
 - Inv/TRX Substations
 - Struisbult PV2 Layout
 - Control Room
 - HV Substation
 - Laydown Area
 - Spares Container
 - Struisbult PV2 100MW (288ha)



Data Sources:
 CSG; ESRI
 Coord System: GCS WGS 1984
 Datum: WGS 1984
 Units: Degree
 Ref: Locality 20211206
 Date: 2021/12/06

EIMS Ref: Struisbult
 Compiled: CM
 Reviewed: SM
 Approved: LW

