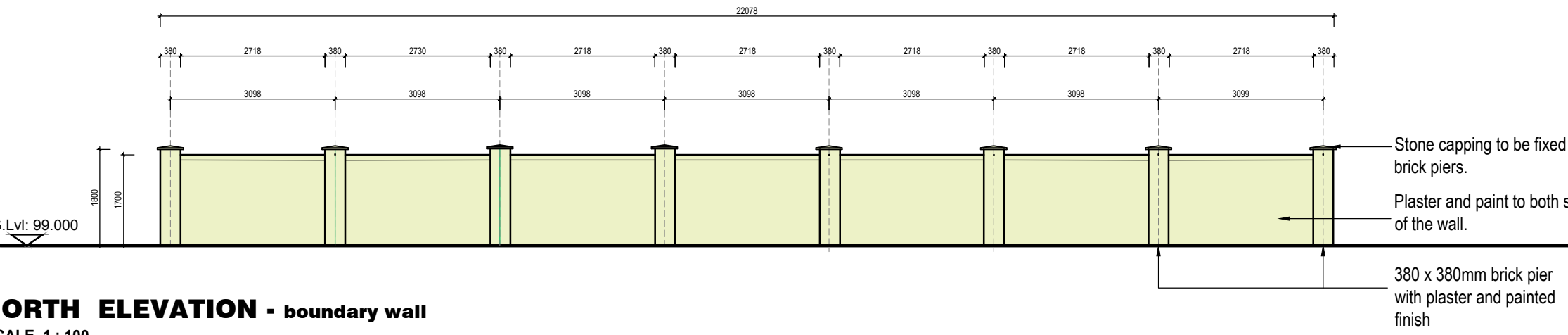
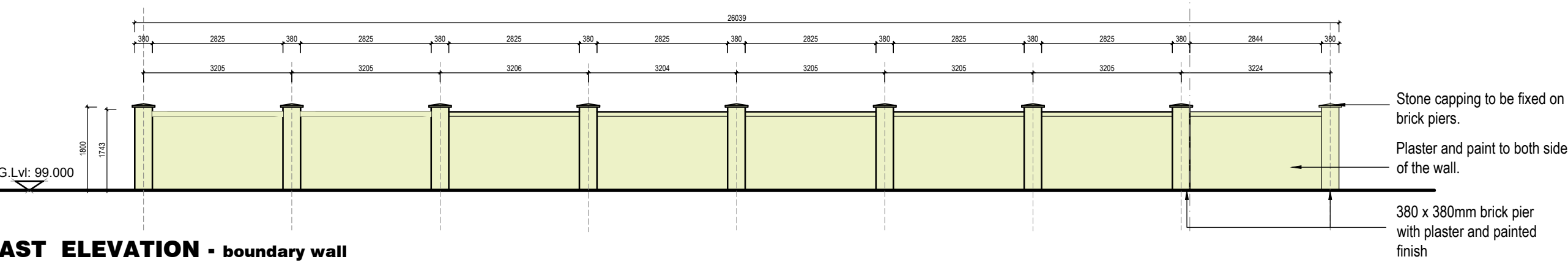


Required soakpit @ 1m<sup>3</sup> per 40m<sup>2</sup>  
 Total Roofed area = 228m<sup>2</sup>  
 Total New Driveway, Parking and Paved area = 282m<sup>2</sup>  
 Required Soakpit : 510 /40 = 12.5m<sup>2</sup> , 2 x 7.2m<sup>2</sup> soakpits

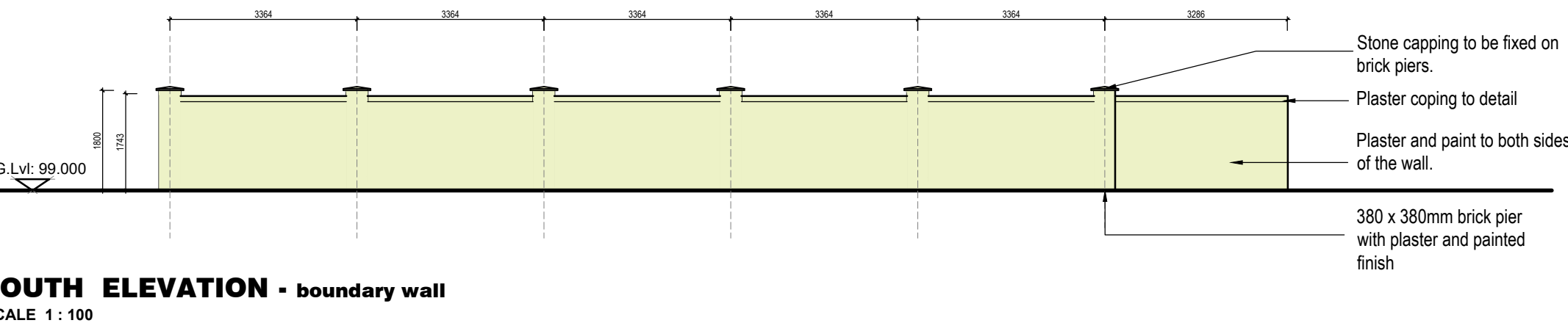
● SOAK PIT  
 SCALE 1 : 50



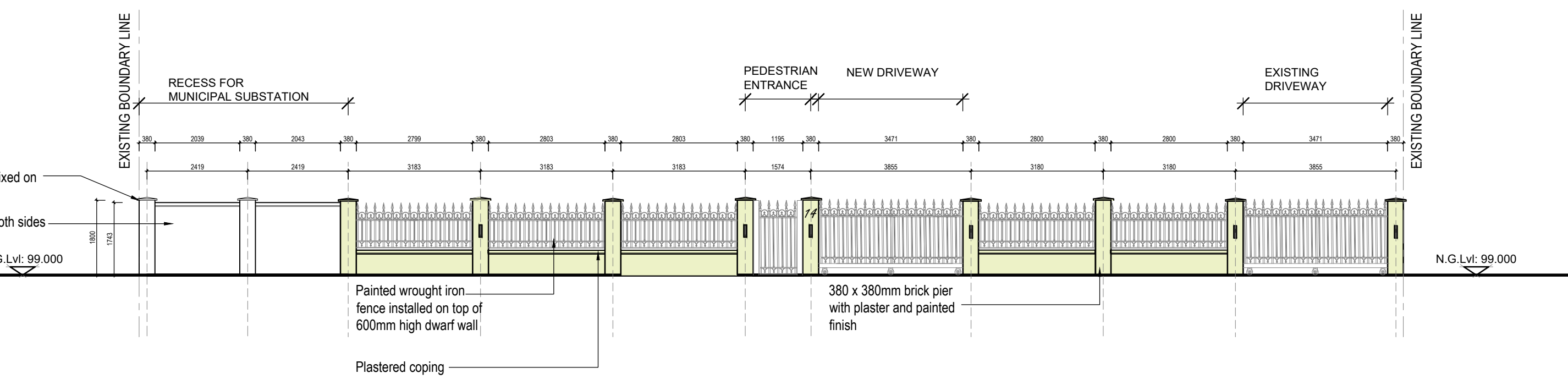
● NORTH ELEVATION - boundary wall  
 SCALE 1 : 100



● EAST ELEVATION - boundary wall  
 SCALE 1 : 100



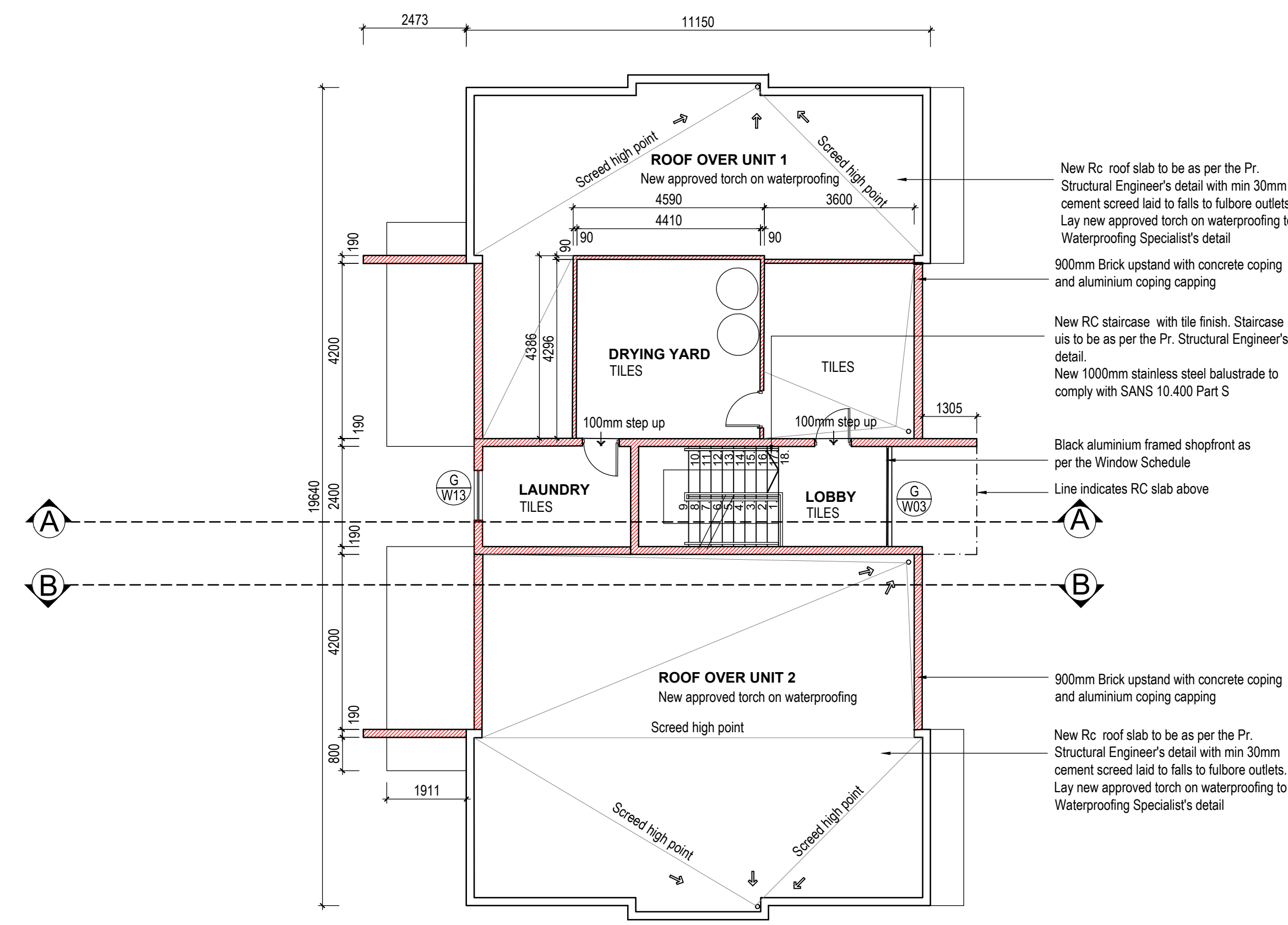
● SOUTH ELEVATION - boundary wall  
 SCALE 1 : 100



● WEST ELEVATION - boundary wall  
 SCALE 1 : 100

DOOR/WINDOW TYPE 01	TYPE 01	TYPE 02	TYPE 03	TYPE 04	TYPE 05
NUMBERS:	W01, W05, W07, W11	W02, W04	W03	W06, W11	W08, W10
DESCRIPTION	2000(w) x 1200(h)mm powder coated aluminium windows comprising of four no. equal panels, two no. of which are to be side hung opening outward. Window is to have a 300mm sightline. All windows are to be supplied complete with all screws and building in lugs. Glazed panels are to be provided with all glazing beads relevant to suit glazing system.	2000(w) x 900(h)mm powder coated aluminium windows comprising of four no. opening glazed panel which is to be side hung opening outward. All windows are to be supplied complete with all screws and building in lugs. Glazed panels are to be provided with all glazing beads relevant to suit glazing system.	2400(w) x 2830(h)mm powder coated aluminium shopfront comprising of a glazed double door, two fixed sideights and a fanlight over. 2400mm(w) x 2100mm(h) window divided into 3 sections as indicated. All windows are to be supplied complete with all screws and building in lugs. Glazed panels are to be provided with all glazing beads relevant to suit glazing system.	1220(w) x 900(h)mm powder coated aluminium window comprising of two side hung opening outward windows. All glazed panels are to be supplied complete with all screws and building in lugs. Glazed panels are to be provided with all glazing beads relevant to suit glazing system.	3000(w) x 2125(h)mm powder coated aluminium sliding folding door comprising of 5 no. fixed glazed panels. All glazed panels are to be supplied complete with all screws and building in lugs. Glazed panels are to be provided with all glazing beads relevant to suit glazing system. Doors are to be supplied with approved weather bar doors are to have Hiltiam on a sliding door head gear.
WINDOW/DOOR FRAME	Powder coated aluminium - COLOUR: Black	Powder coated aluminium - COLOUR: Black	Powder coated aluminium - COLOUR: Black	Powder coated aluminium - COLOUR: Black	Powder coated aluminium - COLOUR: Black
GLAZING	4mm Clear monolithic annealed glazing to comply with SANS 10 400 Part N	4mm Clear monolithic annealed glazing to comply with SANS 10 400 Part N	6.38mm Clear laminated safety glazing to comply with SANS 10 400 Part N All safety glazing is to have the laminated safety glass logo.	6.38mm Clear laminated safety glazing to comply with SANS 10 400 Part N All safety glazing is to have the laminated safety glass logo.	6.38mm Clear laminated safety glazing to comply with SANS 10 400 Part N All safety glazing is to have the laminated safety glass logo.
LOCATION	BEDROOM 1 (unit 1 and unit 2), BEDROOM 2 (unit 1 and unit 2)	KITCHEN (Unit 1 and Unit 2)	ENTRANCE LOBBY	BATHROOM WINDOW (Unit 1 and Unit 2)	LIVING ROOM (Unit 1 and Unit 2)
GENERAL	All glazing to be in accordance with SANS 10400 part N, SANS 10137 and SANS 1263, 2012 Edition 3.1 regulations - include neoprene washers to prevent "bimetallic corrosion" of metals. Frames to be extruded aluminium alloy with milled corners to form close joints, fixed with stainless steel self-tapping screws. All aluminium joints to be sealed with suitable construction silicone. All to comply with AAAMSA specifications.	All glazing to be in accordance with SANS 10400 part N, SANS 10137 and SANS 1263, 2012 Edition 3.1 regulations - include neoprene washers to prevent "bimetallic corrosion" of metals. Frames to be extruded aluminium alloy with milled corners to form close joints, fixed with stainless steel self-tapping screws. All aluminium joints to be sealed with suitable construction silicone. All to comply with AAAMSA specifications.	All glazing to be in accordance with SANS 10400 part N, SANS 10137 and SANS 1263, 2012 Edition 3.1 regulations - include neoprene washers to prevent "bimetallic corrosion" of metals. Frames to be extruded aluminium alloy with milled corners to form close joints, fixed with stainless steel self-tapping screws. All aluminium joints to be sealed with suitable construction silicone. All to comply with AAAMSA specifications.	All glazing to be in accordance with SANS 10400 part N, SANS 10137 and SANS 1263, 2012 Edition 3.1 regulations - include neoprene washers to prevent "bimetallic corrosion" of metals. Frames to be extruded aluminium alloy with milled corners to form close joints, fixed with stainless steel self-tapping screws. All aluminium joints to be sealed with suitable construction silicone. All to comply with AAAMSA specifications.	All glazing to be in accordance with SANS 10400 part N, SANS 10137 and SANS 1263, 2012 Edition 3.1 regulations - include neoprene washers to prevent "bimetallic corrosion" of metals. Frames to be extruded aluminium alloy with milled corners to form close joints, fixed with stainless steel self-tapping screws. All aluminium joints to be sealed with suitable construction silicone. All to comply with AAAMSA specifications.
DOOR/WINDOW NUMBERS:	TYPE 06 W09, W13				
DESCRIPTION	1200(w) x 900(h)mm powder coated aluminium window comprising of two no. equal panels, which are to be side hung opening outward. All windows are to be supplied complete with all screws and building in lugs. Glazed panels are to be provided with all glazing beads relevant to suit glazing system.				
WINDOW/DOOR FRAME	Powder coated aluminium - COLOUR: Black				
GLAZING	4mm Clear monolithic annealed glazing to comply with SANS 10 400 Part N				
LOCATION	LAUNDRY (Unit 1 and Unit 2 and the LAUNDRY @ roof level)				
GENERAL	All glazing to be in accordance with SANS 10400 part N, SANS 10137 and SANS 1263, 2012 Edition 3.1 regulations - include neoprene washers to prevent "bimetallic corrosion" of metals. Frames to be extruded aluminium alloy with milled corners to form close joints, fixed with stainless steel self-tapping screws. All aluminium joints to be sealed with suitable construction silicone. All to comply with AAAMSA specifications.				

● WINDOW SCHEDULE  
 SCALE 1 : 100



● ROOF PLAN  
 SCALE 1 : 100

**GENERAL**  
 All work is to be done in accordance with the SANS 10400 National Building Regulations.  
 All materials and workmanship are to comply with the relevant SAN 10400 codes and or the specified international codes where applicable in the Architectural specifications. Where relevant South African National Standards, British Standards, BS codes of practice, or Agreement Certificates applicable to the design exists, the recommendations and requirements of such documents to be considered a minimum standard for the works.  
 The contractor shall in all aspects of the works comply with the provisions of the Occupational Health and Safety Act, 1993 (Act No 85 of 1993) and any regulations promulgated in terms of that Act or the Factories Machinery and Building Works Act of 1941.  
 The contractor shall set up, document and maintain a quality assurance and quality control system, in accordance with SANS 9001/ISO 9001, able to be checked to the satisfaction of the Architect. That all materials and workmanship, whenever these sources meet the requirements of the Specification. Should the Contractor or any of his sub-contractors be certified to the SANS 9001 family of standards then monitor these works accordingly.  
 This drawing must be read in conjunction with all the relevant

REV	DATE	DRAWN	DESCRIPTION
-	15-11-2022	LMS	FOR INFORMATION ONLY

SEE POWER OF ATTORNEY 5-01-2023  
 SIGNATURE OF CLIENT /AGENT DATE  
 SIGNATURE OF AUTHOR 5-01-2023  
 LEANNE GREY PR. SNR. ARCH. TECH ST 2226  
 NAME REG. CATEGORY REG. NO.

**LEANNE GREY ARCHITECTURAL SERVICES**  
 ARCHITECTURAL DRAFTING  
 15 CONSTITUTION AVENUE, PARKBELL  
 2140 WENTWORTH, 2140  
 E-mail: leanne@lga.co.za

**PROJECT TITLE**  
 PROPOSED 2 NEW DWELLING UNITS  
 FOR  
 MR. & MRS C WAGNER  
 14 LOBELIA ROAD, BLUFF  
 REM OF PORTION 10 OF ERF 1825  
 OF WENTWORTH  
**SCHEDULE**  
 ROOF PLAN, WINDOW  
 SOAK PIT DETAILS  
 SCALE: AS SHOWN

PROJECT NUMBER: 12-200  
 DRAWING STATUS: CONSTRUCTION  
 SUBMISSION TENDER CHECKED BY: LMS  
 DATE: 08-08-2022  
 SIGNED: