

SIZES METRES	DIAGRAMS ANGLES		CO-ORDINATES Y SYSTEM U.O.	
	A	B	C	D
AE	19.81	A 57 41 00		
BE	35.54	B 96 34 10		
CE	15.85	C 98 11 50		
DE	40.82	D 57 35 00		

The figure A B C D E F represents a Sewer and Drain Servitude 1.83 metres wide vide diagram Sub Vol 654 fol 90 relating to Deed of Transfer No 3774/1944.

Comments

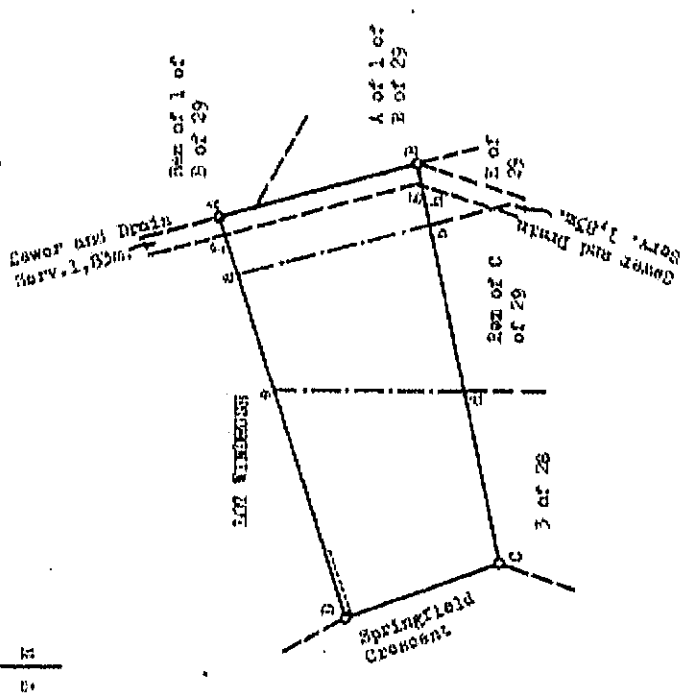
- The figure A B C D E F represents Sub ~~Vol 654 fol 90~~ ^{Lot 772} ~~Block 2~~ ^{of the Town Lands of Durban No 1737 vide diagram Sub. Vol. 654 fol 90} relating to Deed of Transfer No 3774/1944.
- The figure A B C D E F represents Sub ~~Vol 654 fol 90~~ ^{Lot 772} ~~Block 2~~ ^{of the Town Lands of Durban No 1737 vide diagram Sub. Vol. 654 fol 72} relating to Deed of Transfer No 3774/1944.
- The figure A B C D E F represents Sub ~~Vol 654 fol 90~~ ^{Lot 772} ~~Block 2~~ ^{of the Town Lands of Durban No 1737 vide diagram Sub. Vol. 654 fol 70} relating to Deed of Transfer No 3774/1944.

The figure A B C D E F represents 712 Square Metres of land being **Lot 771 DURBAN** LOT POSNER BLOCK D BEREA OF THE TOWN LANDS OF DURBAN 101737 and comprises the properties 1 2 and 3 quoted above situated in the City of Durban Province of Natal.
Compiled in October 1980
by me *C. M. Stacey* Lead Surveyor

This diagram relates to		The Original Diagram's	
No. <i>657</i>	8897/1982	No. <i>19/1</i>	File No. <i>19/1</i>
Register of Deeds		Comp. Plan Q 47	
No. <i>9897/1982</i>		Durban Street 59	

S.G. No. **3278/1980**
Approved *[Signature]*
I, Surveyor-General

Special Plan No. *771/1980*
Prop. U.O. No. *88197/1980*



REG. OFF. **FU**
REG. OFF. **FU**