



6 April 2023  
581877

Assistant Director  
Department of Forestry, Fisheries and the Environment: Integrated Environmental Authorisation  
Cnr. Steve Biko and Soutpansberg Road  
473 Steve Biko, Arcadia,  
Pretoria, 8000

**Attention: Mohammad Essop**

Dear Mohammed

**Environmental Authorisation for the Basic Assessment for the Stilfontein Photovoltaic Facilities Cluster and Associated Infrastructure, North West Province: Site Sensitivity Verification Report for Sunbird PV**

**1. Introduction**

South Africa Mainstream Renewable Power (Pty) Ltd (Mainstream) propose to construct up to nine Photovoltaic (PV) facilities (or “projects”) and associated infrastructure for the Stilfontein PV Cluster. The Stilfontein Cluster is located ~20 km south-west of Potchefstroom and ~6 km north-east of Stilfontein, in the in the City of Matlosana and JB Marks Local Municipalities and Dr Kenneth Kaunda District Municipality (DKKDM) in North West Province (Figure 1-1). The Stilfontein Cluster lies within the Klerksdorp Renewable Energy Development Zone (REDZ).

A Basic Assessment (BA) process in terms of the National Environmental Management Act 107 of 1998, as amended (NEMA) and the EIA Regulations, 2014, as amended, is required to support an application for EA for the project(s). SRK Consulting (South Africa) (Pty) Ltd (SRK) was appointed by Mainstream to undertake the BA processes for each project in the Stilfontein PV Cluster.

**Partners** R Armstrong, P Aucamp, JS Bartels, CM Bauman, N Brien, LSE Coetser, CD Dalglish, IT Doku, BM Engelsman, R Gardiner, M Hinsch, SG Jones, W Jordaan, WC Joughin, DA Kilian, F Lake, JA Lake, LM Linzer, NG Macfarlane, V Maharaj, I Mahomed, JI Mainama, HAC Meintjes, MJ Morris, DH Mossop, GP Nel, RD O'Brien, VS Reddy, PJ Shepherd, T Shepherd, MJ Sim, JS Stiff, M van Huyssteen, AT van Zyl, MD Wanless, ML Wertz

**Directors** R Armstrong, V Maharaj, TJ McGurk, VS Reddy, T Shepherd, JS Stiff, AT van Zyl

**Associate Partners** PL Burmeister, LI Boshoff, T Claassen, SA de Villiers, M du Toit, AM Robertshaw, N Rump, LC Shand, LH Spies, JM Walls


**Consultants** JM Brown, PrSci Nat, JR Dixon, PrEng, GC Howell, PrEng, PhD, WC Joughin, PrEng, MSc, PR Labrum, PrEng, LM Linzer, PrSci Nat, PhD, SA Lorentz, Agric. Eng, PhD, RRW McNeill, PrTech Eng, HAC Meintjes, PrEng, MSc, PN Rosewarne, PrSci Nat, MSc, VM Simposya, PrSci Nat, TR Stacey, PrEng, DSc, PJ Terbrugge, PrSci Nat, MSc, HFJ Theart, PrSci Nat, PhD, DJ Venter, PrTech Eng, A Wood, PrSci Nat, PhD

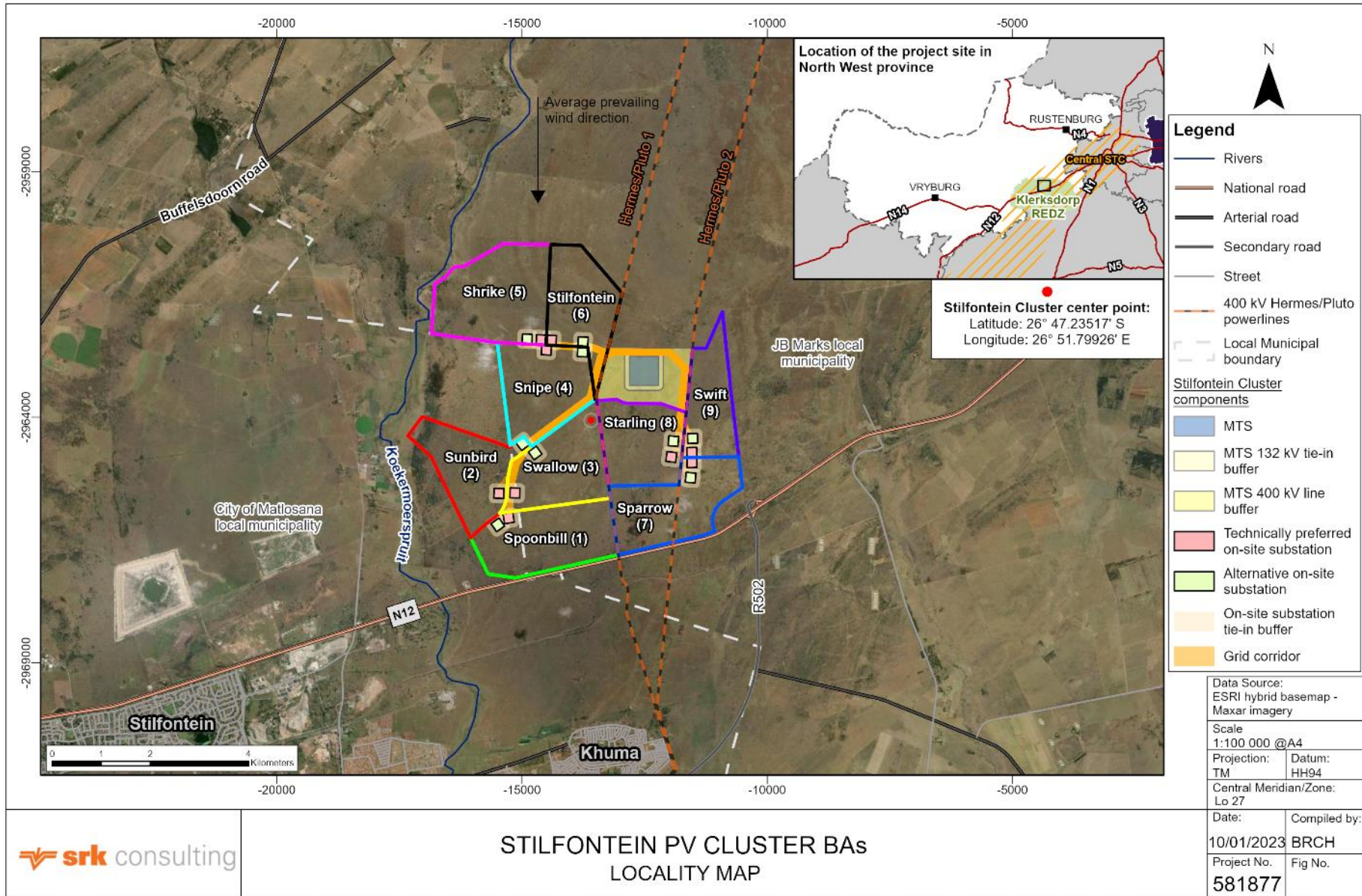
**African Offices:**

Cape Town	+27 (0) 21 659 3060
Durban	+27 (0) 31 279 1200
East London	+27 (0) 43 748 6292
Johannesburg	+27 (0) 11 441 1111
Pietermaritzburg	+27 (0) 33 347 5069
Gqeberha (Port Elizabeth)	+27 (0) 41 509 4800
Pretoria	+27 (0) 12 361 9821
Accra	+23 (3) 24 485 0928
Lubumbashi	+243 (0) 81 999 9775

**Group Offices:**

Africa  
Asia  
Australia  
Europe  
North America  
South America





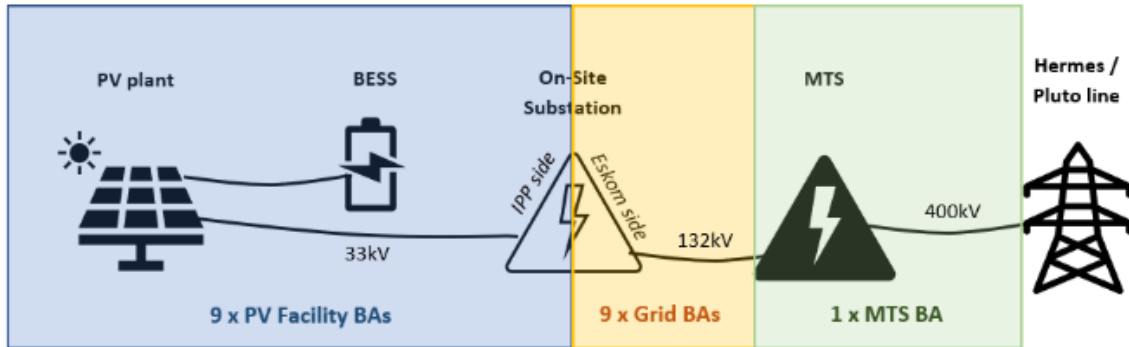
Path: \\CTN-SVR0.ctn.za.srk.ad\vol1\Root\Proj\New Proj\581877\_Stilfontein PV BA\GIS\GISPROJ\APR\581877\_STILFONTEIN\_SOLAR.aprx\581877\_STILFONTEIN\_SOLAR\_BA\_LocalityMap\_A4L\_20220309

Revision: A Date: 14 02 2023

**Figure 1-1: Locality Map**

Separate EAs are to be applied for the individual projects in the Stilfontein Cluster (as well as the associated grid connections):

- 9 x PV facilities, including 11-33 kV transmission lines, each including Battery Energy Storage Systems (BESS), and 9 x Independent Power Producer (IPP)-side on-site substations;
- 9 x Eskom-side on-site substations and 132 kV transmission lines to the Main Transmission Station (MTS); and
- 1 x MTS and 400 kV lines to existing Hermes Pluto transmission lines.



**Figure 1-2: Components included in the individual BA processes for the Stilfontein Cluster**

In terms of Regulation 16(1)(b)(v) of the NEMA EIA Regulation, 2014, an application for EA must include “the report generated by the national web based environmental screening tool”, and on 5 July 2019, notice was given that that the submission of such a report would be compulsory after 90 days of publication of this notice (i.e. by 4 October 2019 – GN R 960). As such, the national web based environmental screening report is hereby appended for the Sunbird PV application.

**2. Site Sensitivity Verification**

The DFFE have advised that it is the responsibility of the Environmental Assessment Practitioner (EAP) to confirm whether these specialist studies will be conducted or provide a motivation as to why the specialist studies will not be conducted as part of the BA processes. SRK’s opinion in this regard (as presented below) and the proposed specialist studies were discussed and agreed on during the Pre-Application Meeting held on 1 March 2022.

This site sensitivity verification report relates specifically to Sunbird PV project.

All specialists, except the Socio-Economic Specialist, conducted site visits in February 2022, and confirmed that it was the appropriate time and season to undertake a site visit to adequately verify the site sensitivity.



**Figure 2-1: Photograph of the Stilfontein Cluster from the N12 highway**



## 2.1 Site Sensitivity Verification

An indication of which specialist studies are to be undertaken and a motivation as to why certain specialist studies will not be undertaken, based on site verification, is provided in Table 2-1 below.

**Table 2-1: Site sensitivity verification of the Sunbird PV**

Studies Required in Terms of the Screening Tool	Screening Sensitivity	Sensitivity Verification <sup>1</sup>	Reference / Motivation as to why not conducted
<b>Agricultural Impact Assessment</b>	High	Very Low	A soil and land capability study has been undertaken and identified that the agricultural sensitivity of the site is Very Low due to soil, slope, temperatures or rainfall. Non-arable land.
<b>Landscape (solar) Impact Assessment</b>	High	High	
<b>Archaeological and Cultural Heritage Impact Assessment</b>	Very High	High	The site is rated as Very High heritage sensitivity because it is located within 2 km of a Grade II heritage site and of very high paleontological sensitivity. The specialist identified a burial ground on the site and therefore has been verified as having a High Heritage sensitivity. A combined heritage study will be undertaken to address the archaeological and paleontological impact of the development.
<b>Paleontology Impact Assessment</b>	Very High		
<b>Aquatic Biodiversity Impact Assessment</b>	Low	Low	Small portions of the project site overlap with areas classified as Aquatic Critical Biodiversity Areas (CBA). An Aquatic Biodiversity Impact Assessment report has been compiled.
<b>Terrestrial Biodiversity Impact Assessment</b>	Very High	High	Most of the project footprint is located within areas classified as Terrestrial Ecological Support Area (ESA) and Critical Biodiversity Area (CBA).
<b>Plant Species Assessment</b>	Medium	Medium	While no SCC were identified on the site, specialist confirmed that SCC are likely to be present in the habitats identified on site.
<b>Animal Species Assessment</b>	Medium	Medium	While no SCC were identified on the site, the specialist confirmed that SCC are likely to be present in the habitats identified on site, specifically the degraded and rocky habitats.
<b>Avian Assessment</b>	Low	High	An avian specialist has been appointed by the proponent to compile an impact assessment.
<b>Geotechnical Assessment</b>	N/A	N/A	The proponent will obtain geotechnical input for the design of the facility.
<b>Socio-Economic Assessment</b>	N/A	N/A	The development and operation of the facility may result in an increase in revenue and / or jobs and may have regional economic benefits. As such, SRK considers it necessary to conduct a Socio-Economic Impact Assessment.
<b>Civil Aviation Assessment</b>	Low	Insignificant	No major or other types of civil aviation aerodromes are located near the Stilfontein Cluster, therefore it is anticipated that impacts to civil aviation will be insignificant. Comments from relevant authorities, e.g. the SACAA, will be sought through the stakeholder engagement process.
<b>Defence Assessment</b>	Low	Insignificant	It is anticipated that impacts to defense will be insignificant. Comment from relevant authorities will be sought through the stakeholder engagement process.

<sup>1</sup> An EAP or specialist is only required to confirm the sites sensitivity (by means of "site sensitivity verification") for themes for which a Protocol exists, in accordance with the requirements set out in the relevant Protocol. Where N/A is indicated, there is no Protocol and therefore "site sensitivity verification" has not been provided, rather a motivation as to why no specialist study is required.

Studies Required in Terms of the Screening Tool	Screening Sensitivity	Sensitivity Verification <sup>1</sup>	Reference / Motivation as to why not conducted
Radio Frequency Interference (RFI)	Low	Insignificant	It is anticipated that impacts to civil aviation will be insignificant. However, comment from relevant authorities will be sought through the stakeholder engagement process.

### 3. Proposed Specialist Studies

To summarise, SRK has undertaken the following specialist studies to inform this project:

- Biodiversity Impact Assessment (including terrestrial and aquatic ecology);
- Soil and Land Capability Assessment;
- Socio-Economic Assessment;
- Heritage Assessment (including archaeology and palaeontology); and
- Visual Impact Assessment.

Yours faithfully,

#### SRK Consulting (South Africa) (Pty) Ltd

SRK Consulting - Certified Electronic Signature



581577/45020/Report  
7445-222-5482-STEY-06/04/2023

This signature has been printed digitally. The Author has given permission for its use for this document. The details are stored in the SRK Signature Database

Kate Steyn

Principal Environmental Consultant

**SCREENING REPORT FOR AN ENVIRONMENTAL AUTHORIZATION AS  
REQUIRED BY THE 2014 EIA REGULATIONS – PROPOSED DEVELOPMENT  
FOOTPRINT ENVIRONMENTAL SENSITIVITY**

**EIA Reference number:** TBC

**Project name:** Stilfontein Cluster PV

**Project title:** Sunbird up to 150 MW Photovoltaic (PV) facility, including 11-33 kV powerline, Battery Energy Storage System (BESS), Independent Power Producer (IPP)-side of on-site substation and associated internal infrastructure and structures, Stilfontein, North West Province, South Africa

**Date screening report generated:** 16/03/2023 20:43:08

**Applicant:** Mainstream Renewable Power South Africa (Pty) Ltd

**Compiler:** SRK Consulting (South Africa) (Pty) Ltd

**Compiler signature:**

.....

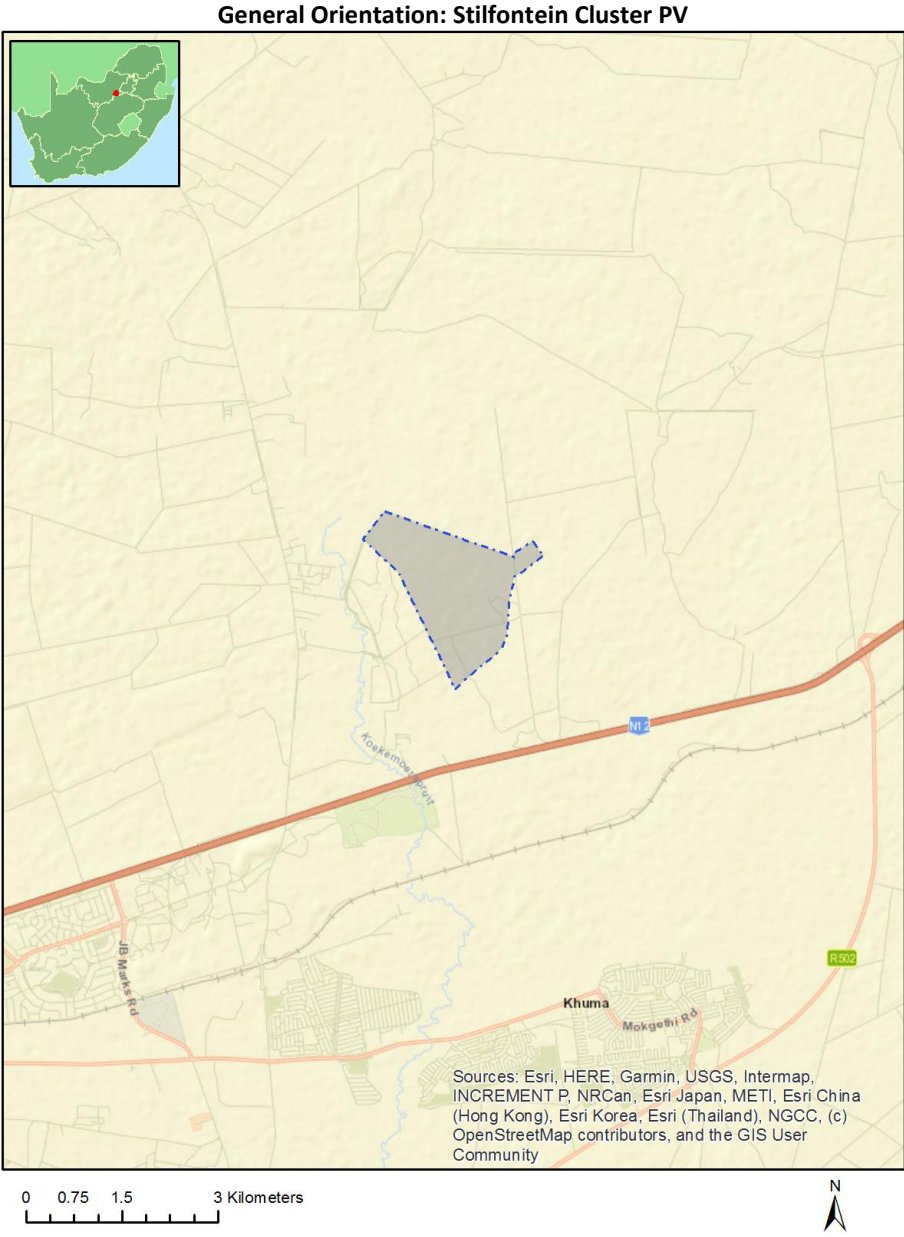
**Application Category:** Utilities Infrastructure|Electricity|Generation|Renewable|Solar|PV

# Table of Contents

- Proposed Project Location ..... 3
  - Orientation map 1: General location ..... 3
- Map of proposed site and relevant area(s) ..... 4
  - Cadastral details of the proposed site ..... 4
  - Wind and Solar developments with an approved Environmental Authorisation or applications under consideration within 30 km of the proposed area ..... 5
  - Environmental Management Frameworks relevant to the application ..... 6
- Environmental screening results and assessment outcomes ..... 6
  - Relevant development incentives, restrictions, exclusions or prohibitions ..... 6
  - Proposed Development Area Environmental Sensitivity ..... 6
  - Specialist assessments identified ..... 7
- Results of the environmental sensitivity of the proposed area ..... 9
  - MAP OF RELATIVE AGRICULTURE THEME SENSITIVITY ..... 9
  - MAP OF RELATIVE ANIMAL SPECIES THEME SENSITIVITY ..... 10
  - MAP OF RELATIVE AQUATIC BIODIVERSITY THEME SENSITIVITY ..... 11
  - MAP OF RELATIVE ARCHAEOLOGICAL AND CULTURAL HERITAGE THEME SENSITIVITY ..... 12
  - MAP OF RELATIVE AVIAN THEME SENSITIVITY ..... 13
  - MAP OF RELATIVE CIVIL AVIATION (SOLAR PV) THEME SENSITIVITY ..... 14
  - MAP OF RELATIVE DEFENCE THEME SENSITIVITY ..... 15
  - MAP OF RELATIVE LANDSCAPE (SOLAR) THEME SENSITIVITY ..... 16
  - MAP OF RELATIVE PALEONTOLOGY THEME SENSITIVITY ..... 17
  - MAP OF RELATIVE PLANT SPECIES THEME SENSITIVITY ..... 18
  - MAP OF RELATIVE RFI THEME SENSITIVITY ..... 19
  - MAP OF RELATIVE TERRESTRIAL BIODIVERSITY THEME SENSITIVITY ..... 20

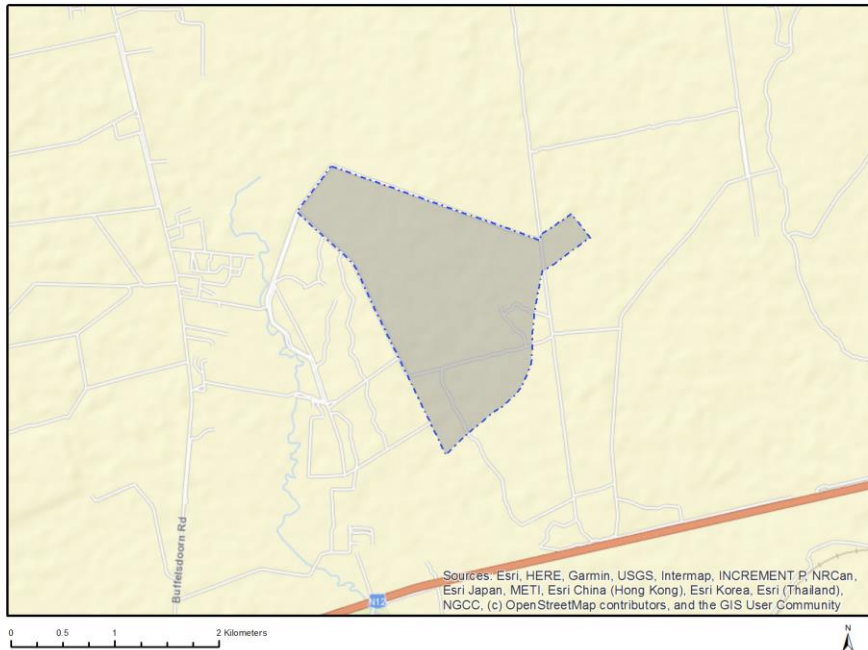
# Proposed Project Location

Orientation map 1: General location





## Map of proposed site and relevant area(s)



## Cadastral details of the proposed site

Property details:

No	Farm Name	Farm/ Erf No	Portion	Latitude	Longitude	Property Type
1	STILFONTEIN	408	0	26°48'14.48S	26°48'16.57E	Farm
2	WITSTINKHOUTBAKEN	409	0	26°48'38.11S	26°51'8.01E	Farm
3	DOORNPLAAT	410	0	26°47'43.21S	26°52'17.45E	Farm
4	DOORNPLAAT	410	4	26°47'34.98S	26°51'30.29E	Farm Portion
5	STILFONTEIN	408	0	26°46'51S	26°50'8.61E	Farm Portion
6	STILFONTEIN	408	26	26°48'3.17S	26°50'33.31E	Farm Portion
7	WITSTINKHOUTBAKEN	409	1	26°48'17.64S	26°51'4.01E	Farm Portion

Development footprint<sup>1</sup> vertices:

Footprint	Latitude	Longitude
1	26°48'23.27S	26°50'14.38E
1	26°47'51.41S	26°49'57.13E
1	26°47'38.23S	26°49'50E
1	26°47'29.36S	26°49'39.2E
1	26°47'28.56S	26°49'38.24E
1	26°47'24.05S	26°49'32.76E
1	26°47'11.45S	26°49'43.45E
1	26°47'16.27S	26°49'58.69E

<sup>1</sup> “development footprint”, means the area within the site on which the development will take place and includes all ancillary developments for example roads, power lines, boundary walls, paving etc. which require vegetation clearance or which will be disturbed and for which the application has been submitted.

1	26°47'16.24S	26°49'58.7E
1	26°47'24.2S	26°50'23.79E
1	26°47'25.29S	26°50'27.23E
1	26°47'29.26S	26°50'39.77E
1	26°47'31.55S	26°50'47.03E
1	26°47'32.04S	26°50'48.57E
1	26°47'30.47S	26°50'48.35E
1	26°47'29.84S	26°50'49.59E
1	26°47'29.25S	26°50'50.58E
1	26°47'28.84S	26°50'51.27E
1	26°47'27.19S	26°50'54.04E
1	26°47'24.9S	26°50'57.85E
1	26°47'24.65S	26°50'58.26E
1	26°47'29.45S	26°51'2.4E
1	26°47'30.07S	26°51'2.93E
1	26°47'30.31S	26°51'3.13E
1	26°47'31.36S	26°51'4E
1	26°47'38.73S	26°50'52.86E
1	26°47'38.73S	26°50'52.85E
1	26°47'38.73S	26°50'52.85E
1	26°47'39.2S	26°50'51.95E
1	26°47'40.11S	26°50'50.23E
1	26°47'40.72S	26°50'49.04E
1	26°47'42.79S	26°50'48.57E
1	26°47'46.05S	26°50'47.83E
1	26°47'47.07S	26°50'47.57E
1	26°47'52.49S	26°50'46.45E
1	26°47'57.72S	26°50'45.99E
1	26°47'57.85S	26°50'45.98E
1	26°48'0.1S	26°50'45.91E
1	26°48'3.59S	26°50'45.72E
1	26°48'6.05S	26°50'45.58E
1	26°48'6.17S	26°50'45.54E
1	26°48'10.42S	26°50'43.87E
1	26°48'13.13S	26°50'42.35E
1	26°48'14.97S	26°50'40.72E
1	26°48'15.5S	26°50'40.23E
1	26°48'18.29S	26°50'36.66E
1	26°48'19.94S	26°50'33.82E
1	26°48'27.29S	26°50'24.18E
1	26°48'31.47S	26°50'19.37E
1	26°48'31.81S	26°50'19.06E
1	26°48'30.24S	26°50'18.18E
1	26°48'29.17S	26°50'17.59E
1	26°48'23.27S	26°50'14.38E

Wind and Solar developments with an approved Environmental Authorisation or applications under consideration within 30 km of the proposed area

No	EIA Reference No	Classification	Status of application	Distance from proposed area (km)
1	12/12/20/2122	Solar PV	Approved	24.7
2	12/12/20/2513/3	Solar PV	Approved	15.4
3	12/12/20/2629	Solar PV	Approved	24.7
4	14/12/16/3/3/2/778	Solar PV	Approved	7.4
5	12/12/20/2513/1	Solar PV	Approved	15.4

6	12/12/20/2513/2	Solar PV	Approved	21
7	12/12/20/2513/1/AM3	Solar PV	Approved	15.4
8	14/12/16/3/3/2/777	Solar PV	Approved	8.5
9	12/12/20/2513/4	Solar PV	Approved	15.4

## Environmental Management Frameworks relevant to the application

No intersections with EMF areas found.

## Environmental screening results and assessment outcomes

The following sections contain a summary of any development incentives, restrictions, exclusions or prohibitions that apply to the proposed development footprint as well as the most environmental sensitive features on the footprint based on the footprint sensitivity screening results for the application classification that was selected. The application classification selected for this report is:

**Utilities Infrastructure | Electricity | Generation | Renewable | Solar | PV.**

### Relevant development incentives, restrictions, exclusions or prohibitions

The following development incentives, restrictions, exclusions or prohibitions and their implications that apply to this footprint are indicated below.

Incentive, restriction or prohibition	Implication
Strategic Transmission Corridor-Central corridor	<a href="https://screening.environment.gov.za/ScreeningDownloads/DevelopmentZones/Combined_EGI.pdf">https://screening.environment.gov.za/ScreeningDownloads/DevelopmentZones/Combined_EGI.pdf</a>
Renewable energy development zones 10-Klerksdorp	<a href="https://screening.environment.gov.za/ScreeningDownloads/DevelopmentZones/Combined_REDZ.pdf">https://screening.environment.gov.za/ScreeningDownloads/DevelopmentZones/Combined_REDZ.pdf</a>

### Proposed Development Area Environmental Sensitivity

The following summary of the development footprint environmental sensitivities is identified. Only the highest environmental sensitivity is indicated. The footprint environmental sensitivities for the proposed development footprint as identified, are indicative only and must be verified on site by a suitably qualified person before the specialist assessments identified below can be confirmed.

Theme	Very High sensitivity	High sensitivity	Medium sensitivity	Low sensitivity
Agriculture Theme		X		
Animal Species Theme			X	
Aquatic Biodiversity Theme				X
Archaeological and Cultural Heritage Theme	X			
Avian Theme				X
Civil Aviation (Solar PV) Theme				X
Defence Theme				X

Landscape (Solar) Theme		X		
Paleontology Theme	X			
Plant Species Theme			X	
RFI Theme				X
Terrestrial Biodiversity Theme	X			

### Specialist assessments identified

Based on the selected classification, and the known impacts associated with the proposed development, the following list of specialist assessments have been identified for inclusion in the assessment report. It is the responsibility of the EAP to confirm this list and to motivate in the assessment report, the reason for not including any of the identified specialist study including the provision of photographic evidence of the footprint situation.

No	Specialist assessment	Assessment Protocol
1	Agricultural Impact Assessment	<a href="https://screening.environment.gov.za/ScreeningDownloads/AssessmentProtocols/Gazetted_WindAndSolar_Agriculture_Assessment_Protocols.pdf">https://screening.environment.gov.za/ScreeningDownloads/AssessmentProtocols/Gazetted_WindAndSolar_Agriculture_Assessment_Protocols.pdf</a>
2	Landscape/Visual Impact Assessment	<a href="https://screening.environment.gov.za/ScreeningDownloads/AssessmentProtocols/Gazetted_General_Requirement_Assessment_Protocols.pdf">https://screening.environment.gov.za/ScreeningDownloads/AssessmentProtocols/Gazetted_General_Requirement_Assessment_Protocols.pdf</a>
3	Archaeological and Cultural Heritage Impact Assessment	<a href="https://screening.environment.gov.za/ScreeningDownloads/AssessmentProtocols/Gazetted_General_Requirement_Assessment_Protocols.pdf">https://screening.environment.gov.za/ScreeningDownloads/AssessmentProtocols/Gazetted_General_Requirement_Assessment_Protocols.pdf</a>
4	Palaeontology Impact Assessment	<a href="https://screening.environment.gov.za/ScreeningDownloads/AssessmentProtocols/Gazetted_General_Requirement_Assessment_Protocols.pdf">https://screening.environment.gov.za/ScreeningDownloads/AssessmentProtocols/Gazetted_General_Requirement_Assessment_Protocols.pdf</a>
5	Terrestrial Biodiversity Impact Assessment	<a href="https://screening.environment.gov.za/ScreeningDownloads/AssessmentProtocols/Gazetted_Terrestrial_Biodiversity_Assessment_Protocols.pdf">https://screening.environment.gov.za/ScreeningDownloads/AssessmentProtocols/Gazetted_Terrestrial_Biodiversity_Assessment_Protocols.pdf</a>
6	Aquatic Biodiversity Impact Assessment	<a href="https://screening.environment.gov.za/ScreeningDownloads/AssessmentProtocols/Gazetted_Aquatic_Biodiversity_Assessment_Protocols.pdf">https://screening.environment.gov.za/ScreeningDownloads/AssessmentProtocols/Gazetted_Aquatic_Biodiversity_Assessment_Protocols.pdf</a>
7	Civil Aviation Assessment	<a href="https://screening.environment.gov.za/ScreeningDownloads/AssessmentProtocols/Gazetted_Civil_Aviation_Installations_Assessment_Protocols.pdf">https://screening.environment.gov.za/ScreeningDownloads/AssessmentProtocols/Gazetted_Civil_Aviation_Installations_Assessment_Protocols.pdf</a>
8	Defense Assessment	<a href="https://screening.environment.gov.za/ScreeningDownloads/AssessmentProtocols/Gazetted_Defence_Installations_Assessment_Protocols.pdf">https://screening.environment.gov.za/ScreeningDownloads/AssessmentProtocols/Gazetted_Defence_Installations_Assessment_Protocols.pdf</a>
9	RFI Assessment	<a href="https://screening.environment.gov.za/ScreeningDownloads/AssessmentProtocols/Gazetted_General_Requirement_Assessment_Protocols.pdf">https://screening.environment.gov.za/ScreeningDownloads/AssessmentProtocols/Gazetted_General_Requirement_Assessment_Protocols.pdf</a>
10	Geotechnical Assessment	<a href="https://screening.environment.gov.za/ScreeningDownloads/AssessmentProtocols/Gazetted_General_Requirement_Assessment_Protocols.pdf">https://screening.environment.gov.za/ScreeningDownloads/AssessmentProtocols/Gazetted_General_Requirement_Assessment_Protocols.pdf</a>
11	Socio-Economic Assessment	<a href="https://screening.environment.gov.za/ScreeningDownloads/AssessmentProtocols/Gazetted_General_Requirement_Assessment_Protocols.pdf">https://screening.environment.gov.za/ScreeningDownloads/AssessmentProtocols/Gazetted_General_Requirement_Assessment_Protocols.pdf</a>
12	Plant Species Assessment	<a href="https://screening.environment.gov.za/ScreeningDownloads/AssessmentProtocols/Gazetted_Plant_Species_Assessment_Protocols.pdf">https://screening.environment.gov.za/ScreeningDownloads/AssessmentProtocols/Gazetted_Plant_Species_Assessment_Protocols.pdf</a>

		<a href="#">pdf</a>
13	Animal Species Assessment	<a href="https://screening.environment.gov.za/ScreeningDownloads/AssessmentProtocols/Gazetted_Animal_Species_Assessment_Protocols.pdf">https://screening.environment.gov.za/ScreeningDownloads/AssessmentProtocols/Gazetted_Animal_Species_Assessment_Protocols.pdf</a>

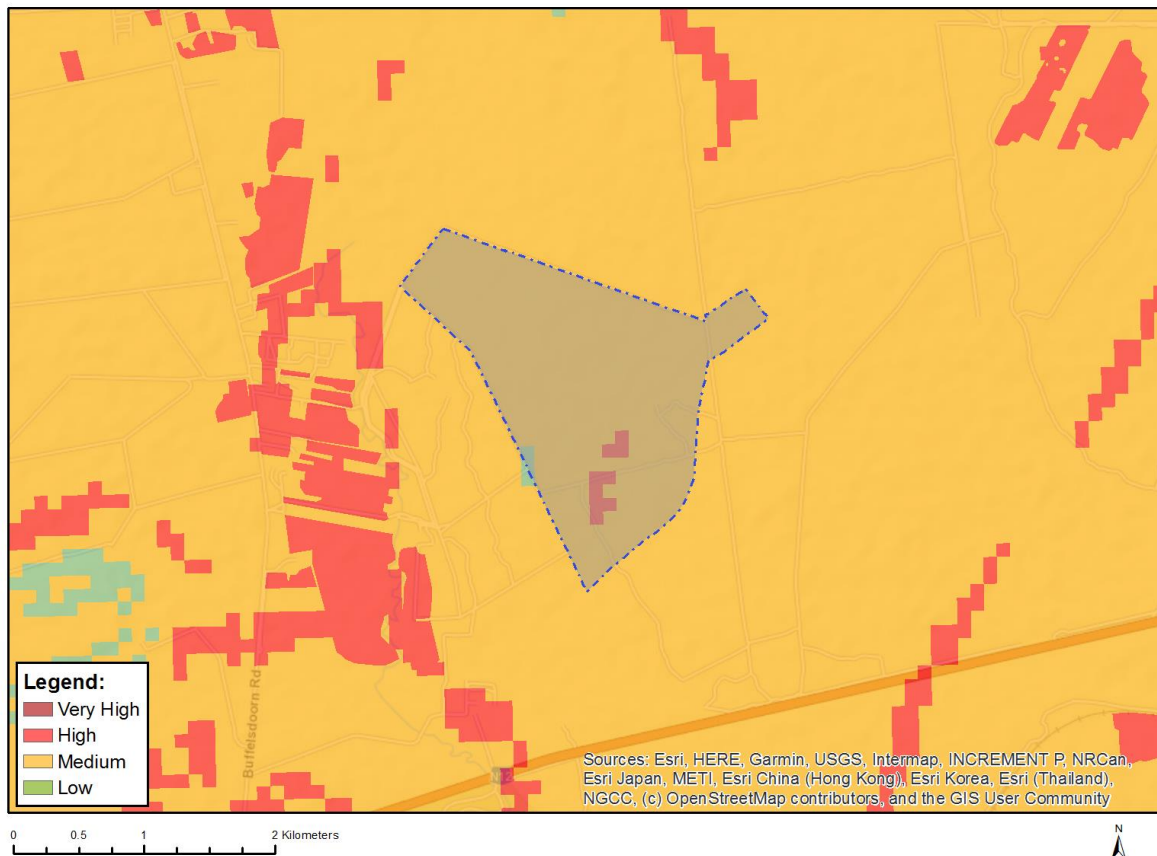
OFFICIAL



## Results of the environmental sensitivity of the proposed area.

The following section represents the results of the screening for environmental sensitivity of the proposed footprint for relevant environmental themes associated with the project classification. It is the duty of the EAP to ensure that the environmental themes provided by the screening tool are comprehensive and complete for the project. Refer to the disclaimer.

### MAP OF RELATIVE AGRICULTURE THEME SENSITIVITY

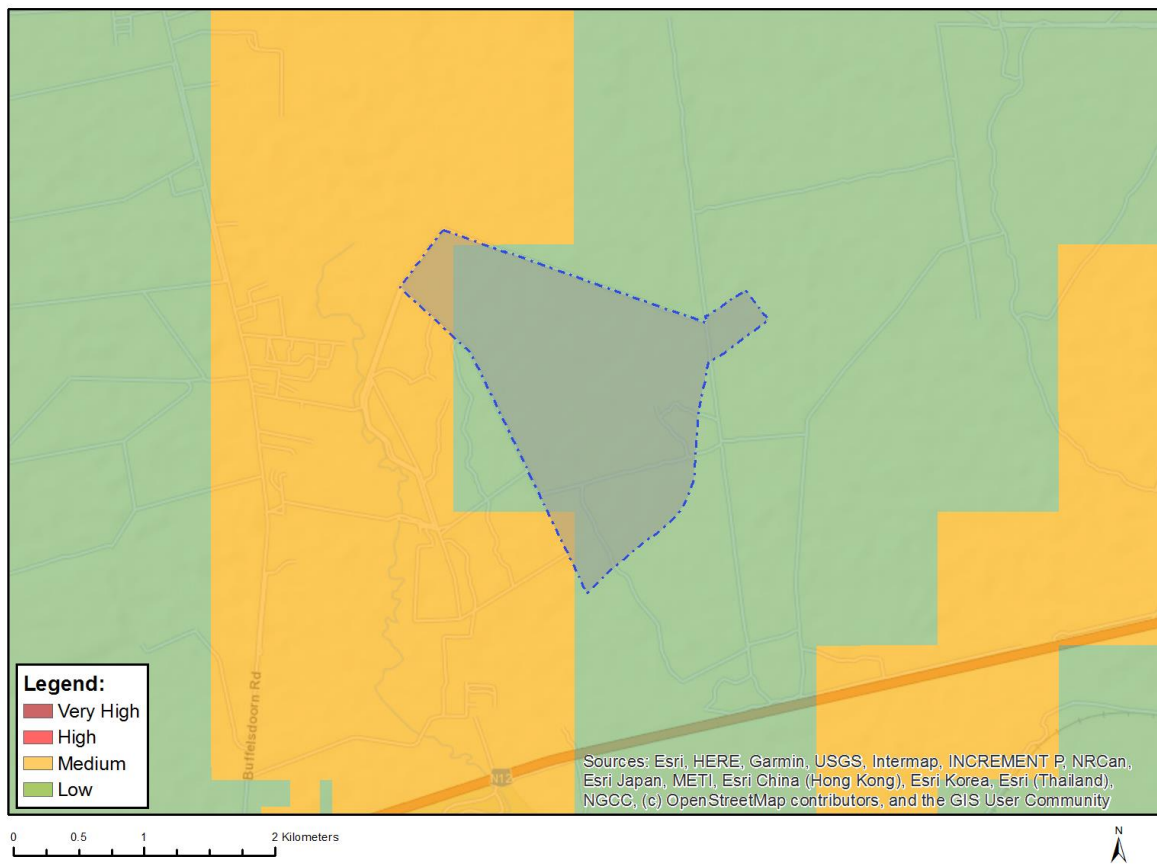


Very High sensitivity	High sensitivity	Medium sensitivity	Low sensitivity
	X		

#### Sensitivity Features:

Sensitivity	Feature(s)
High	Land capability;09. Moderate-High/10. Moderate-High
Low	Land capability;01. Very low/02. Very low/03. Low-Very low/04. Low-Very low/05. Low
Medium	Land capability;06. Low-Moderate/07. Low-Moderate/08. Moderate

## MAP OF RELATIVE ANIMAL SPECIES THEME SENSITIVITY



Where only a sensitive plant unique number or sensitive animal unique number is provided in the screening report and an assessment is required, the environmental assessment practitioner (EAP) or specialist is required to email SANBI at [eiadatarequests@sanbi.org.za](mailto:eiadatarequests@sanbi.org.za) listing all sensitive species with their unique identifiers for which information is required. The name has been withheld as the species may be prone to illegal harvesting and must be protected. SANBI will release the actual species name after the details of the EAP or specialist have been documented.

Very High sensitivity	High sensitivity	Medium sensitivity	Low sensitivity
		X	

### Sensitivity Features:

Sensitivity	Feature(s)
Low	Subject to confirmation
Medium	Mammalia-Hydriectis maculicollis

## MAP OF RELATIVE AQUATIC BIODIVERSITY THEME SENSITIVITY



Very High sensitivity	High sensitivity	Medium sensitivity	Low sensitivity
			X

### Sensitivity Features:

Sensitivity	Feature(s)
Low	Low sensitivity

# MAP OF RELATIVE ARCHAEOLOGICAL AND CULTURAL HERITAGE THEME SENSITIVITY



Very High sensitivity	High sensitivity	Medium sensitivity	Low sensitivity
X			

**Sensitivity Features:**

Sensitivity	Feature(s)
Low	Low sensitivity
Very High	Within 2km of a Grade II Heritage site

# MAP OF RELATIVE AVIAN THEME SENSITIVITY



Very High sensitivity	High sensitivity	Medium sensitivity	Low sensitivity
			X

**Sensitivity Features:**

Sensitivity	Feature(s)
Low	Low Sensitivity



## MAP OF RELATIVE CIVIL AVIATION (SOLAR PV) THEME SENSITIVITY



Very High sensitivity	High sensitivity	Medium sensitivity	Low sensitivity
			X

### Sensitivity Features:

Sensitivity	Feature(s)
Low	No major or other types of civil aviation aerodromes

# MAP OF RELATIVE DEFENCE THEME SENSITIVITY

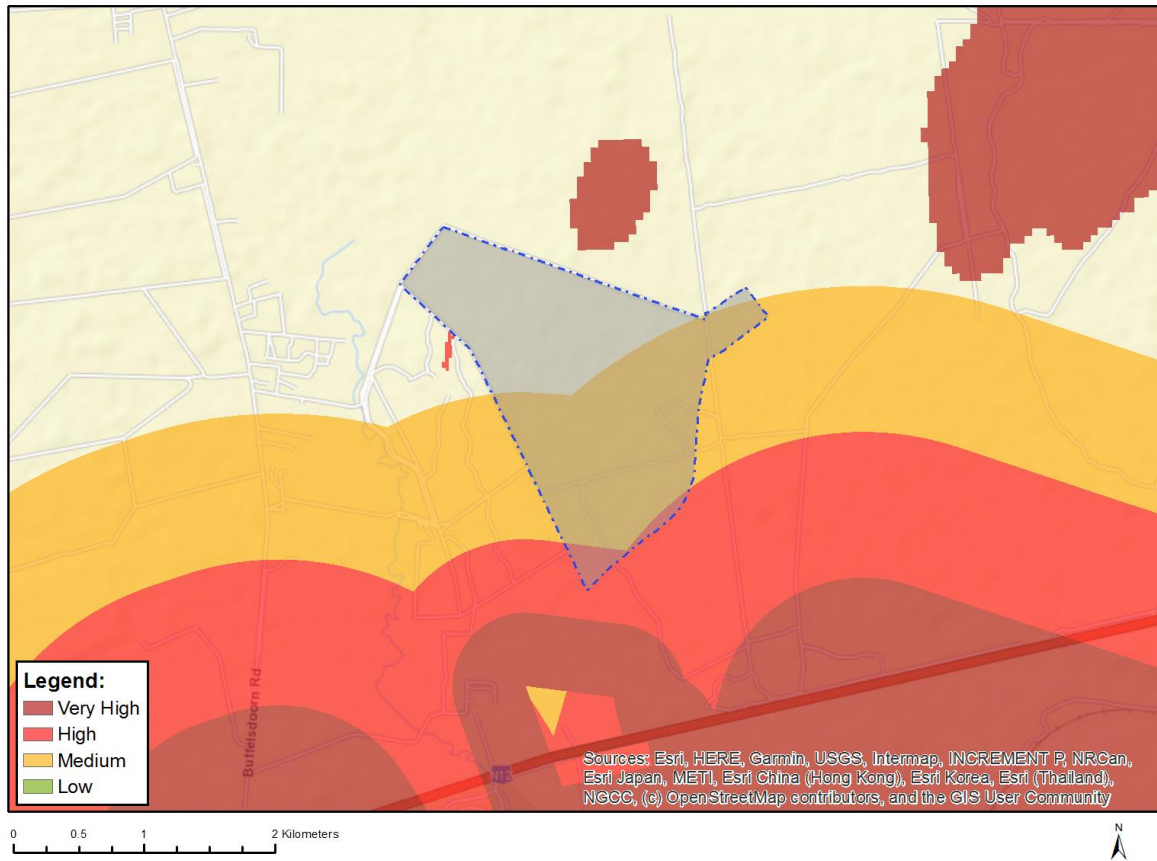


Very High sensitivity	High sensitivity	Medium sensitivity	Low sensitivity
			X

**Sensitivity Features:**

Sensitivity	Feature(s)
Low	Low sensitivity

## MAP OF RELATIVE LANDSCAPE (SOLAR) THEME SENSITIVITY

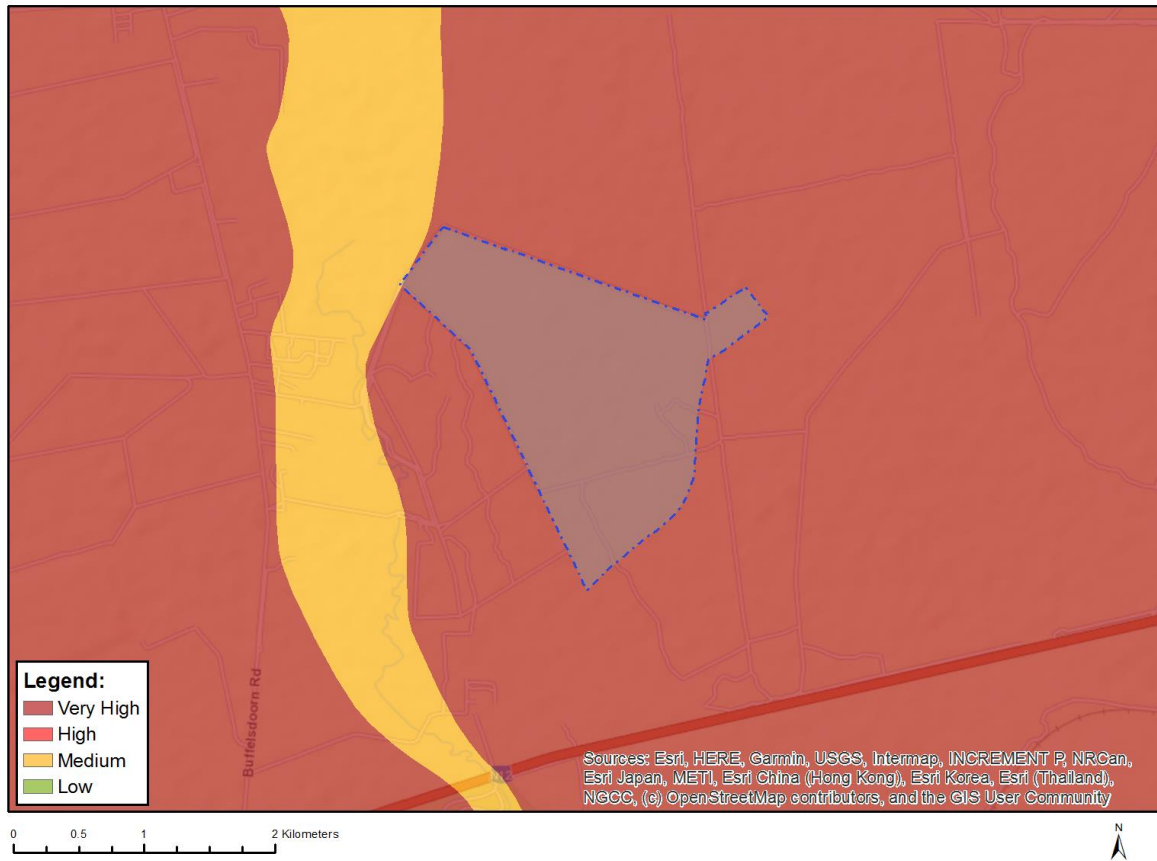


Very High sensitivity	High sensitivity	Medium sensitivity	Low sensitivity
	X		

### Sensitivity Features:

Sensitivity	Feature(s)
High	Between 500 and 1000 m of a town or village
High	Between 1 and 2 km of a game farm
Medium	Between a and 2 km of a town or village
Medium	Between 2 and 3 km of a game farm

## MAP OF RELATIVE PALEONTOLOGY THEME SENSITIVITY

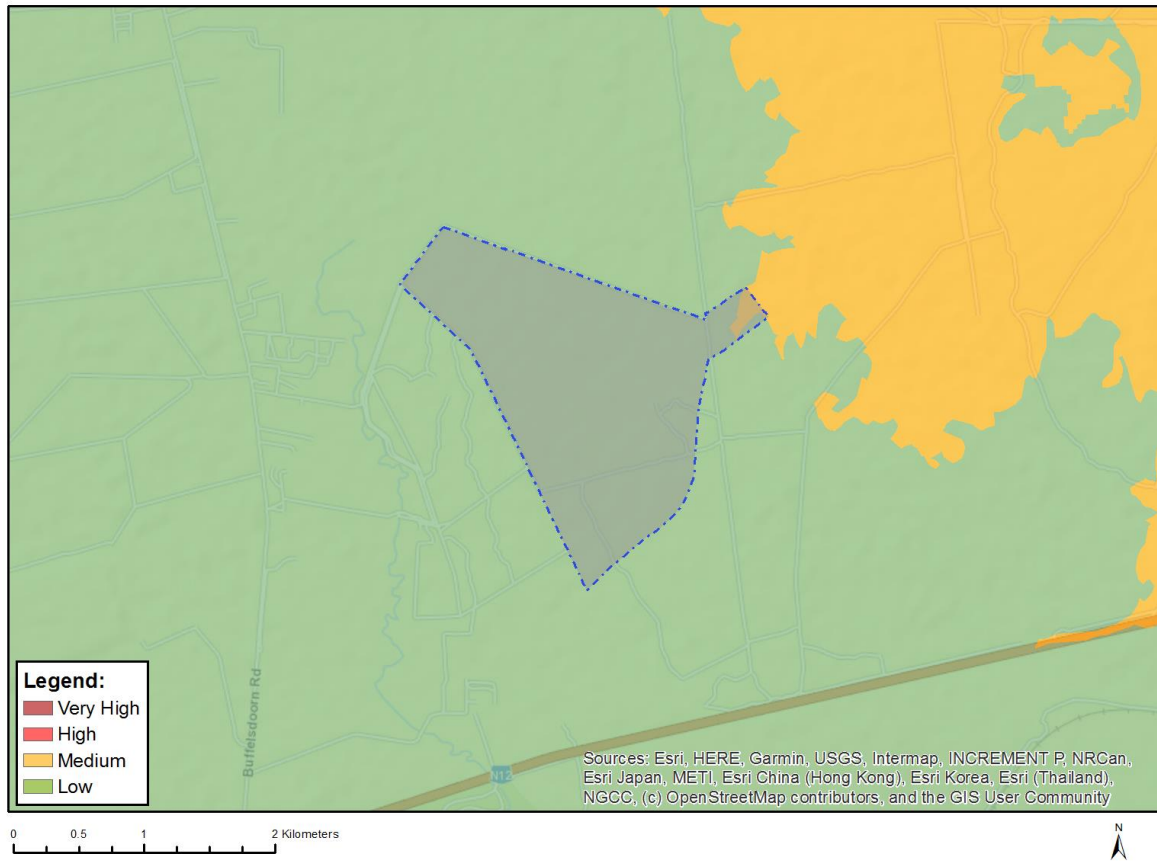


Very High sensitivity	High sensitivity	Medium sensitivity	Low sensitivity
X			

### Sensitivity Features:

Sensitivity	Feature(s)
Medium	Features with a Medium paleontological sensitivity
Very High	Features with a Very High paleontological sensitivity

## MAP OF RELATIVE PLANT SPECIES THEME SENSITIVITY



Where only a sensitive plant unique number or sensitive animal unique number is provided in the screening report and an assessment is required, the environmental assessment practitioner (EAP) or specialist is required to email SANBI at [eiadatarequests@sanbi.org.za](mailto:eiadatarequests@sanbi.org.za) listing all sensitive species with their unique identifiers for which information is required. The name has been withheld as the species may be prone to illegal harvesting and must be protected. SANBI will release the actual species name after the details of the EAP or specialist have been documented.

Very High sensitivity	High sensitivity	Medium sensitivity	Low sensitivity
		X	

### Sensitivity Features:

Sensitivity	Feature(s)
Low	Low Sensitivity
Medium	Sensitive species 1261



MAP OF RELATIVE RFI THEME SENSITIVITY



Very High sensitivity	High sensitivity	Medium sensitivity	Low sensitivity
			X

Sensitivity Features:

Sensitivity	Feature(s)
Low	Low sensitivity

## MAP OF RELATIVE TERRESTRIAL BIODIVERSITY THEME SENSITIVITY



Very High sensitivity	High sensitivity	Medium sensitivity	Low sensitivity
X			

### Sensitivity Features:

Sensitivity	Feature(s)
Low	Low Sensitivity
Very High	Ecological support area 1