



SCOPING AND ENVIRONMENTAL IMPACT ASSESSMENT

**Scoping and Environmental Impact Assessment
for the proposed Manganese Export Facility and
Associated Infrastructure in the Coega Industrial
Development Zone, Port of Ngqura and Tankatara area**

DRAFT EIA REPORT

CHAPTER 14C:

HISTORICAL AND CULTURAL HERITAGE STATEMENT



Contents

CHAPTER 14C:	<u>HISTORICAL AND CULTURAL HERITAGE STATEMENT</u>	14-70
14C.1	INTRODUCTION AND METHODOLOGY	14-70
14C.1.1	PURPOSE	14-70
14C.1.2	ASSUMPTIONS AND INFORMATION SOURCES	14-70
14C.2	BRIEF DESCRIPTION OF THE AFFECTED ENVIRONMENT	14-70
14C.3	APPLICABLE LEGISLATION AND PERMITS	14-76
14C.3.1	NATIONAL HERITAGE RESOURCES ACT (NHRA) (ACT 25 OF 1999)	14-76
14C.4	ASSESSMENT OF IMPACTS AND IDENTIFICATION OF MANAGEMENT ACTIONS	14-79
14C.5	REFERENCES	14-80

TABLES AND FIGURES

Table 14C.1:	Coordinates of affected graveyards	14-72
Table 14C.2	Significance methodology (Whitelaw, 1997)	14-79
Figure 14C.1	Version 10 of the Coega Open Space Management Plan indicating graveyard sites in areas of zone 9 and 13 affected by the proposed project (grave sites are indicated by blue crosses and the stockyard by a red star).	14-72
Figure 14C.2	Location of the heritage resources identified within the study area	14-73
Figure 14C.3	Extract A (Figure 14C.2) and Photos of the cultural and historical sites that will potentially be affected by the proposed development. Photos by J. Bennie (2010)	14-74
Photo 14C.1	Algoa Bricks Graveyards 1 and 2	14-75
Photo 14C.2	Algoa Bricks Graveyard 1 (left) and 3 (right)	14-75
Photo 14C.3	Unfenced Graveyard	14-75
Photo 14C.4	Algoa Bricks Graveyard , also called Cemetery at Brickfield (Photo JS Bennie)	14-76



CHAPTER 14C: HISTORICAL AND CULTURAL HERITAGE STATEMENT

This section presents the findings of a historical and cultural heritage desktop study prepared by the EAPs who authored this report, in consultation with heritage specialists, as part of the Environmental Impact Assessment for the proposed Manganese Ore Export Facility and associated infrastructure in the Coega Industrial Development Zone, Port of Ngqura and Tankatara area.

14C.1 INTRODUCTION AND METHODOLOGY

14C.1.1 Purpose

This section provides an overview of the historical and cultural resources in the vicinity of the proposed development and how these could potentially be impacted by the development. Broad management actions, as proposed by the SAHRA and the Eastern Cape Provincial Heritage Authority, are recommended to avoid or mitigate any potential impacts.

14C.1.2 Assumptions and information sources

The description of the affected environment presented in this chapter is based on information gathered from available information sources such as studies previously conducted in the Coega IDZ. Information is predominantly based on a review of the draft historical report relating to the built environment and graves prepared by Jenny Bennie as part of the heritage study for the Coega IDZ that was commissioned by the Coega Development Corporation in 2010 (Bennie, 2010). An underlying assumption is that the sources of information used are reliable.

A limitation of the historical and cultural heritage review presented in this section is that it was prepared by the EAPs conducting this EIA, who are not qualified heritage specialists. But it should be noted that the EAPs did consult with heritage specialists as part of this review.

14C.2 BRIEF DESCRIPTION OF THE AFFECTED ENVIRONMENT

The historical report including built environment and graves prepared by Jenny Bennie as part of the heritage study for the Coega IDZ (commissioned by the Coega Development Corporation in 2010) concluded that no culturally sensitive pre-18th century structures were observed in the designated zones of the Coega IDZ, although oral history might show a variety of cultural groups (such as Early, Middle and Stone Age man, San, Khoekhoen and Black Xhosa speaking peoples)



CHAPTER 14C: HISTORICAL AND CULTURAL HERITAGE

passing through the territory. The Trekboer, Dutch and British 1820 Settlers, who also inhabited the area, left some remnants of their cultures in the form of buildings and demarcated grave sites.

Three graveyards that will be affected by the proposed development have been identified (Figures 14C.1 to 14C.3):

- Zone 9: Two graveyards located where the stockyard is proposed to be located (Algoa Bricks 1 and 3);
- Zone 13: An unfenced graveyard located to the east of the railway line; and
- Zone 13: A railway graveyard located to the west of the railway.

A fourth graveyard (Algoa Bricks 2) may potentially be affected by the proposed development. The archaeologist is currently assessing if any graves are located in between the fenced grave yards at Algoa Bricks. No graveyards have been located in Zone 11 and on the portion of Tankatara Farm that will be affected by the proposed development (J. Binneman pers. comment, 2012).

The coordinates of the above graveyards are provided in Table 14C.1. A field survey to inform the Grave Relocation Management Plan is currently being conducted by PGS Grave Solutions (Pty) Ltd to identify the exact location and number of graves that will need to be relocated as part of this project. Currently, it is estimated that approximately 141 graves will need to be relocated:

- Unfenced graveyard – estimate of 50 graves
- Rail graveyard – estimate of 60 graves
- Algoa Bricks 1 – 4 graves
- Algoa Bricks 3 – 27 graves

PGS will also develop a grave relocation management plan, in accordance with the requirements of the heritage authorities.

An old viaduct and culverts are located on the existing railway lines and may be affected by the proposed doubling of the railway line. Should these features be impacted upon, the proponent will have to apply for built environment permits.

No other historical or cultural sites that could potentially be affected by the proposed development have been identified.

The main conclusions from the Coega IDZ Cultural heritage study (Bennie, 2010) relating to the study area are the following:

- The mud and brick cottage near the Coega station is interesting in that it dates from the early 19th century and is typical of ordinary farm outbuildings of the era. It is completely disassociated from anything else in its environment, so has no historical enclave merit, but if it could be preserved and utilised intact it would serve as a worthwhile example of vernacular architecture. It is essential to prevent these early buildings from falling into disrepair by finding suitable alternatives for their use.
- The stone viaduct under the railway line is of interest and should be preserved. It dates probably from about 1875 when the railway line from Port Elizabeth was constructed.
- Most of the grave sites in the report need to be preserved and conserved.¹

¹ It is however suggested that in the event that a development cannot accommodate the preservation of grave sites, the owner must apply for a grave exhumation or relocation permit.



CHAPTER 14C: HISTORICAL AND CULTURAL HERITAGE

Table 14C.1: Coordinates of affected graveyards

Name of graveyard	Coordinates			
	Corner 1	Corner 2	Corner 3	Corner 4
Algoa Bricks 1	33°45'49.07"S	33°45'49.32"S	33°45'49.45"S	33°45'49.19"S
	25°39'58.81"E	25°39'59.00"E	25°39'58.74"E	25°39'58.57"E
Algoa Bricks 2	33°45'41.23"S	33°45'41.31"S	33°45'42.99"S	33°45'41.77"S
	25°39'29.04"E	25°39'29.15"E	25°39'27.54"E	25°39'27.37"E
Algoa Bricks 3	33°45'49.19"S	33°45'49.76"S	33°45'50.23"S	33°45'49.65"S
	25°39'59.85"E	25°40'0.26"E	25°39'59.44"E	25°39'59.03"E
Railway graveyards	33°45'17.11"S	33°45'17.36"S	33°45'18.95"S	33°45'18.66"S
	25°39'24.01"E	25°39'24.54"E	25°39'23.51"E	25°39'22.94"E
Unfenced graveyard	33°45'11.68"S	33°45'13.61"S	33°45'15.09"S	33°45'14.92"S
	25°39'31.58"E	25°39'34.04"E	25°39'32.35"E	25°39'31.58"E
			Corner 5	
			33°45'13.32"S	
			25°39'29.56"E	

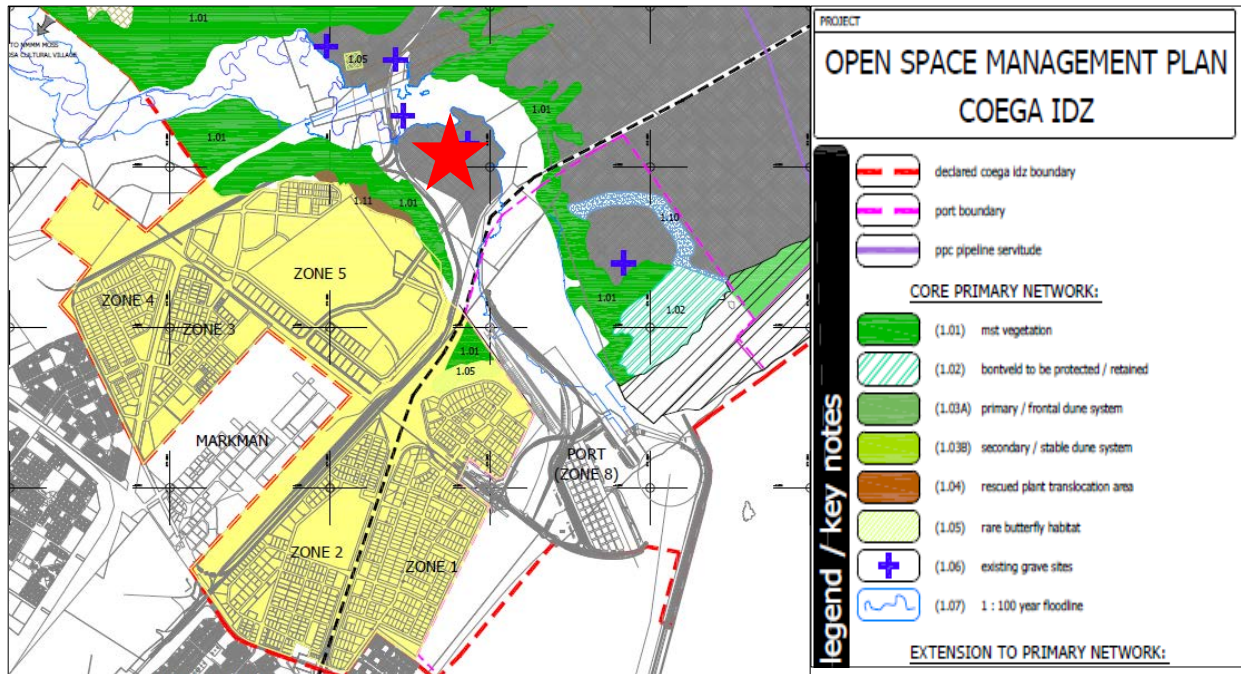


Figure 14.1 Version 10 of the Coega Open Space Management Plan indicating graveyard sites in areas of zone 9 and 13 affected by the proposed project (grave sites are indicated by blue crosses and the stockyard by a red star).

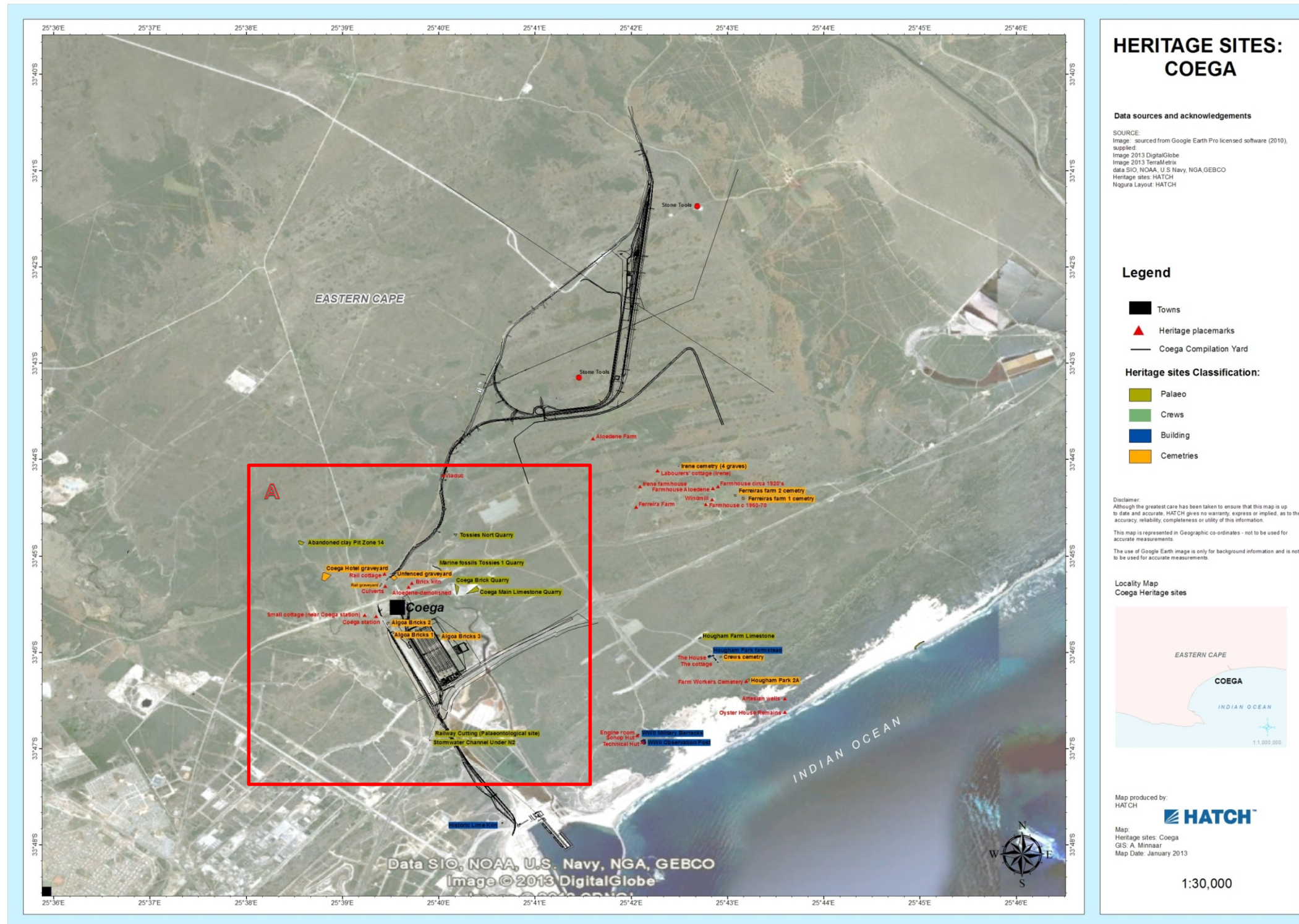


Figure 14.2 Location of the heritage resources identified within the study area



Figure 14.3 Extract A (Figure 14C.2) and Photos of the cultural and historical sites that will potentially be affected by the proposed development. Photos by J. Bennie (2010)



CHAPTER 14C: HISTORICAL AND CULTURAL HERITAGE



Photo 14.1 Algoa Bricks Graveyards 1 and 2



Photo 14.2 Algoa Bricks Graveyard 1 (left) and 3 (right)



Photo 14.3 Unfenced Graveyard



CHAPTER 14C: HISTORICAL AND CULTURAL HERITAGE



Photo 14.4 Algoa Bricks Graveyard, also called Cemetery at Brickfield (Photo JS Bennie)

14C.3 APPLICABLE LEGISLATION AND PERMITS

14C.3.1 National Heritage Resources Act (NHRA) (Act 25 of 1999)

Sections 34, 35, 36(3) (a), (4), (5) and (6) of the National Heritage Resources Act 25 of 1999 apply to the proposed project:

Structures

34. (1) No person may alter or demolish any structure or part of a structure which is older than 60 years without a permit issued by the relevant provincial heritage resources authority.

(2) Within three months of the refusal of the provincial heritage resources authority to issue a permit, consideration must be given to the protection of the place concerned in terms of one of the formal designations provided for in Part 1 of this Chapter.

(3) The provincial heritage resources authority may at its discretion, by notice in the Provincial Gazette, make an exemption from the requirements of subsection (1) within a defined geographical area, or for certain defined categories of site within a defined geographical area, provided that it is satisfied that heritage resources falling into the defined area or category have been identified and are adequately provided for in terms of the provisions of Part 1 of this Chapter.



CHAPTER 14C: HISTORICAL AND CULTURAL HERITAGE

(4) Should the provincial heritage resources authority believe it to be necessary it may, following a three-month notice period published in the Provincial Gazette, withdraw or amend a notice under subsection (3).

Archaeology, palaeontology and meteorites

Section 35

35. (1) Subject to the provisions of section 8, the protection of archaeological and palaeontological sites and material and meteorites is the responsibility of a provincial heritage resources authority: Provided that the protection of any wreck in the territorial waters and the maritime cultural zone shall be the responsibility of SAHRA.

(2) Subject to the provisions of subsection (8)(a), all archaeological objects, palaeontological material and meteorites are the property of the State. The responsible heritage authority must, on behalf of the State, at its discretion ensure that such objects are lodged with a museum or other public institution that has a collection policy acceptable to the heritage resources authority and may in so doing establish such terms and conditions as it sees fit for the conservation of such objects.

(3) Any person who discovers archaeological or palaeontological objects or material or a meteorite in the course of development or agricultural activity must immediately report the find to the responsible heritage resources authority, or to the nearest local authority offices or museum, which must immediately notify such heritage resources authority.

(4) No person may, without a permit issued by the responsible heritage resources authority—

- (a) destroy, damage, excavate, alter, deface or otherwise disturb any archaeological or palaeontological site or any meteorite;
- (b) destroy, damage, excavate, remove from its original position, collect or own any archaeological or palaeontological material or object or any meteorite;
- (d) bring onto or use at an archaeological or palaeontological site any excavation equipment or any equipment which assist in the detection or recovery of metals or archaeological and palaeontological material or objects, or use such equipment for the recovery of meteorites.

(5) When the responsible heritage resources authority has reasonable cause to believe that any activity or development which will destroy, damage or alter any archaeological or palaeontological site is under way, and where no application for a permit has been submitted and no heritage resources management procedure in terms of section 38 has been followed, it may—

- (a) serve on the owner or occupier of the site or on the person undertaking such development an order for the development to cease immediately for such period as is specified in the order;
- (b) carry out an investigation for the purpose of obtaining information on whether or not an archaeological or palaeontological site exists and whether mitigation is necessary;
- (c) if mitigation is deemed by the heritage resources authority to be necessary, assist the person on whom the order has been served under paragraph (a) to apply for a permit as required in subsection (4); and
- (d) recover the costs of such investigation from the owner or occupier of the land on which it is believed an archaeological or palaeontological site is located or from the person



CHAPTER 14C: HISTORICAL AND CULTURAL HERITAGE

proposing to undertake the development if no application for a permit is received within two weeks of the order being served.

Burial grounds and graves

Section 36. (3) (a) No person may, without a permit issued by SAHRA or a provincial heritage resources authority—

- (a) destroy, damage, alter, exhume or remove from its original position or otherwise disturb the grave of a victim of conflict, or any burial ground or part thereof which contains such graves;
- (b) destroy, damage, alter, exhume, remove from its original position or otherwise disturb any grave or burial ground older than 60 years which is situated outside a formal cemetery administered by a local authority; or
- (c) bring onto or use at a burial ground or grave referred to in paragraph (a) or (b) any excavation equipment, or any equipment which assists in the detection or recovery of metals.
- (4) SAHRA or PHRA may not issue a permit for the damage or destruction of any burial ground or grave unless it is satisfied that the applicant has made satisfactory arrangements for the exhumation and re-interment of the contents of such graves at the cost of the applicant and in accordance with any regulations made by the responsible heritage resources authority.
- (5) The applicant must have made a concerted effort to contact and consult communities and individuals who by tradition have an interest in such graves or burial grounds and reached agreements regarding the future of such graves or burial grounds.
- (6) During the course of any development, the discovery of any previously unknown graves or burial sites must result in the immediate cessation of activities and the discovery must be reported to the responsible heritage resources authority who in turn with the South African Police service will carry out an investigation for the purpose of obtaining information on whether or not such a grave is protected in terms of the Act or is of significance to any community. If it is, assistance must be given to any person or community to make arrangements for exhumation and re-interment of the contents of such graves or in the absence of any such person or community make arrangements as it deems fit.

14C.4 ASSESSMENT OF IMPACTS AND IDENTIFICATION OF MANAGEMENT ACTIONS

Potential impacts on historical and cultural heritage resources are limited to the relocation of approximately 30 graves as part of the construction phase. Using the criteria below (Table 14C.2), the potential for such an impact occurring is definite and the significance rating prior to mitigation is predicted to be of **low** significance in terms of historical structures and living heritage and of **high** significance in terms of the legislation.

Table 14C.2 Significance methodology (Whitelaw, 1997)

Class	Characteristic	Category 1	Category 2	Category 3
1	Context	Historical structures out of context and poorly preserved Scattered historical objects in vicinity of the ruins and surrounding landscape No oral history available	Limited context Historical structures in acceptable condition Medium concentration of historical objects in vicinity of the ruins and surrounding landscape Limited oral history available	Well defined context Historical structures well preserved High concentration of historical objects in vicinity of the ruins and surrounding area Significant oral history available
2	Rarity of historical Items	Absent	Present	Highly visible
3	Need for future investigation	Absent	Present	Highly visible
4	Potential for future public display	Low	Medium	High
5	Visual value	Low	Medium	High
6	Need for a heritage management plan	Low	Medium	High

Note: This table is based on the methodology developed by the Natal Museum and used by heritage practitioners to determine site significance (Whitelaw, 1997).

The following management actions to avoid or mitigate any potential impacts on historical and cultural heritage resources have been recommended by SAHRA:

- A buffer zone of at least 15 m must be maintained between the fence around the graves and any proposed development;
- In the event that historical structures are located within the development footprint, a permit application for demolition will be applied for from ECPHRA
- A sampling and monitoring permit will be applied for that will allow the professional archaeologist to remove heritage objects/artefacts from the site before and during construction



CHAPTER 14C: HISTORICAL AND CULTURAL HERITAGE

- The EO will be trained in the type of heritage objects/artefacts that may occur at the proposed impacted area

With the implementation of appropriate mitigation measures as recommended above, the potential impact of the construction of the proposed Manganese Ore Export Facility on historical and cultural heritage resources can be reduced to a negative **Low Significance** impact.

14C.5 REFERENCES

Bennie, J., 2010, Historical component of heritage impact assessment relating to the built environment and graves of the greater Coega Industrial Development Zone (IDZ), near Port Elizabeth, Nelson Mandela Bay Municipality, Eastern Cape Province. Prepared for Coega Development Corporation, version dated May 2010.

Whitelaw, G. 1997. Archaeological monuments in KwaZulu-Natal: a procedure for the identification of value. Natal Museum Journal of Humanities. Chapter 9. Pages 99 – 109