

**SCREENING REPORT FOR AN ENVIRONMENTAL AUTHORIZATION AS
REQUIRED BY THE 2014 EIA REGULATIONS – PROPOSED DEVELOPMENT
FOOTPRINT ENVIRONMENTAL SENSITIVITY**

EIA Reference number: TBC

Project name: Maralla 132kV Powerline

Project title: Basic Assessment

Date screening report generated: 23/07/2021 20:34:38

Applicant: BTE Renewables

Compiler: WSP Group Africa (Pty) Ltd

Compiler signature:
.....

Application Category: Utilities Infrastructure | Electricity | Distribution and Transmission | Powerline

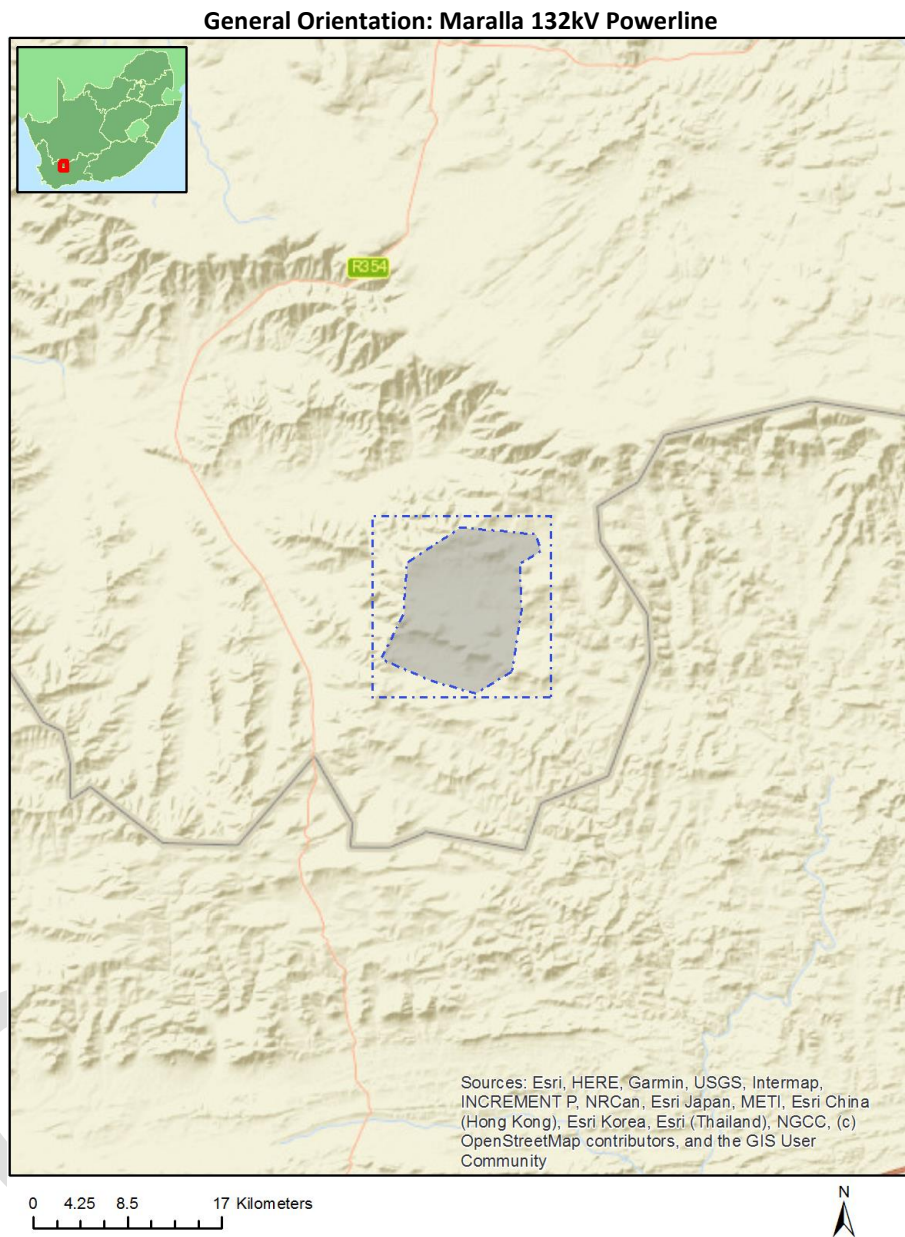


Table of Contents

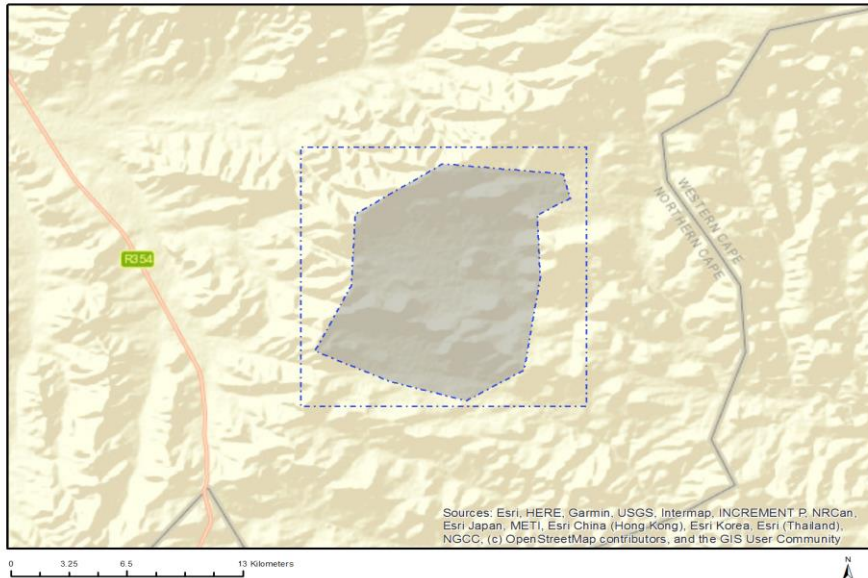
Proposed Project Location	3
Orientation map 1: General location	3
Map of proposed site and relevant area(s)	4
Cadastral details of the proposed site	4
Wind and Solar developments with an approved Environmental Authorisation or applications under consideration within 30 km of the proposed area	5
Environmental Management Frameworks relevant to the application	5
Environmental screening results and assessment outcomes	6
Relevant development incentives, restrictions, exclusions or prohibitions	6
Map indicating proposed development footprint within applicable development incentive, restriction, exclusion or prohibition zones	7
Proposed Development Area Environmental Sensitivity	7
Specialist assessments identified	8
Results of the environmental sensitivity of the proposed area	10
MAP OF RELATIVE AGRICULTURE THEME SENSITIVITY	10
MAP OF RELATIVE ANIMAL SPECIES THEME SENSITIVITY	11
MAP OF RELATIVE AQUATIC BIODIVERSITY THEME SENSITIVITY	12
MAP OF RELATIVE ARCHAEOLOGICAL AND CULTURAL HERITAGE THEME SENSITIVITY	13
MAP OF RELATIVE CIVIL AVIATION THEME SENSITIVITY	14
MAP OF RELATIVE DEFENCE THEME SENSITIVITY	15
MAP OF RELATIVE PALEONTOLOGY THEME SENSITIVITY	16
MAP OF RELATIVE PLANT SPECIES THEME SENSITIVITY	17
MAP OF RELATIVE TERRESTRIAL BIODIVERSITY THEME SENSITIVITY	18

Proposed Project Location

Orientation map 1: General location



Map of proposed site and relevant area(s)



Cadastral details of the proposed site

Property details:

No	Farm Name	Farm/ Erf No	Portion	Latitude	Longitude	Property Type
1	DE HOOP	202	0	32°49'4.06S	20°39'7.2E	Farm
2	APPELS FONTEIN	201	0	32°50'14.11S	20°34'31.95E	Farm
3	LEEUWE HOEK	183	0	32°43'49.99S	20°36'29.48E	Farm
4	KNOFFEL VLEI	186	0	32°46'10.67S	20°35'15.34E	Farm
5	RHEEBOKKE FONTEIN	209	0	32°51'49.03S	20°39'47.61E	Farm
6	DRIE ROODE HEUVELS	180	0	32°43'34.16S	20°44'32.03E	Farm
7	ZWANEOELSHOEK	184	0	32°42'55.62S	20°37'46.14E	Farm
8	VOLVENKOP	207	0	32°52'11.8S	20°45'24.44E	Farm
9	ORANGIE FONTEIN	203	0	32°46'12.4S	20°41'6.61E	Farm
10	WOLVEN HOEK	182	0	32°42'16.98S	20°40'1.42E	Farm
11	ORANGE FONTEIN	185	0	32°45'7.18S	20°38'46.91E	Farm
12	KENTUCKY	206	0	32°48'6.7S	20°45'17.43E	Farm
13	SCHALKWYKSKRAAL	204	0	32°45'15.99S	20°46'53.87E	Farm
14	DRIE ROODEHEUVELS	181	0	32°43'15.01S	20°41'20.47E	Farm
15	DRIE ROODE HEUVELS	180	0	32°44'0.43S	20°44'13.29E	Farm Portion
16	LEEUWE HOEK	183	0	32°43'49.99S	20°36'29.48E	Farm Portion
17	KNOFFEL VLEI	186	0	32°46'10.67S	20°35'15.34E	Farm Portion
18	ORANGIE FONTEIN	203	3	32°47'11.22S	20°42'48.36E	Farm Portion
19	ORANGE FONTEIN	185	0	32°45'7.18S	20°38'46.91E	Farm Portion
20	APPELS FONTEIN	201	0	32°50'14.11S	20°34'31.95E	Farm Portion
21	WOLVEN HOEK	182	1	32°42'29.51S	20°41'0.21E	Farm Portion
22	WOLVEN HOEK	182	2	32°42'18.19S	20°39'44.33E	Farm Portion
23	SCHALKWYKSKRAAL	204	0	32°45'15.99S	20°46'53.87E	Farm Portion
24	VOLVENKOP	207	1	32°51'16.56S	20°44'10.01E	Farm Portion
25	ORANGIE FONTEIN	203	1	32°46'47.72S	20°40'16.44E	Farm Portion

26	KENTUCKY	206	0	32°48'6.7S	20°45'17.43E	Farm Portion
27	RHEEBOKKE FONTEIN	209	1	32°50'49.31S	20°41'36.35E	Farm Portion
28	DE HOOP	202	0	32°49'4.06S	20°39'7.2E	Farm Portion
29	ORANGIE FONTEIN	203	0	32°45'37.12S	20°41'55.99E	Farm Portion
30	ORANGIE FONTEIN	203	4	32°46'33.75S	20°41'9.68E	Farm Portion
31	DRIE ROODEHEUVELS	181	0	32°43'15.01S	20°41'20.47E	Farm Portion
32	ZWANPELSHOEK	184	0	32°42'55.62S	20°37'46.14E	Farm Portion
33	ORANGIE FONTEIN	203	2	32°47'1.33S	20°42'48.3E	Farm Portion
34	RHEEBOKKE FONTEIN	209	0	32°51'11.86S	20°38'14.74E	Farm Portion

Development footprint¹ vertices:

Footprint	Latitude	Longitude
1	32°44'58.57S	20°38'8.64E
1	32°43'33.32S	20°40'44.38E
1	32°43'50.65S	20°44'25.21E
1	32°44'32.23S	20°44'37.57E
1	32°45'1.33S	20°43'38.24E
1	32°46'45.28S	20°43'43.18E
1	32°49'27.34S	20°43'13.52E
1	32°50'19.26S	20°41'29.7E
1	32°49'46.03S	20°39'11.27E
1	32°48'54.09S	20°36'55.32E
1	32°47'1.89S	20°38'0.4E
1	32°47'1.89S	20°38'0.4E
1	32°47'1.89S	20°38'0.4E
1	32°44'58.57S	20°38'8.64E

Wind and Solar developments with an approved Environmental Authorisation or applications under consideration within 30 km of the proposed area

No	EIA Reference No	Classification	Status of application	Distance from proposed area (km)
1	12/12/20/2235	Solar PV	Approved	29.5

Environmental Management Frameworks relevant to the application

No intersections with EMF areas found.

¹ “development footprint”, means the area within the site on which the development will take place and includes all ancillary developments for example roads, power lines, boundary walls, paving etc. which require vegetation clearance or which will be disturbed and for which the application has been submitted.

Environmental screening results and assessment outcomes

The following sections contain a summary of any development incentives, restrictions, exclusions or prohibitions that apply to the proposed development footprint as well as the most environmental sensitive features on the footprint based on the footprint sensitivity screening results for the application classification that was selected. The application classification selected for this report is:

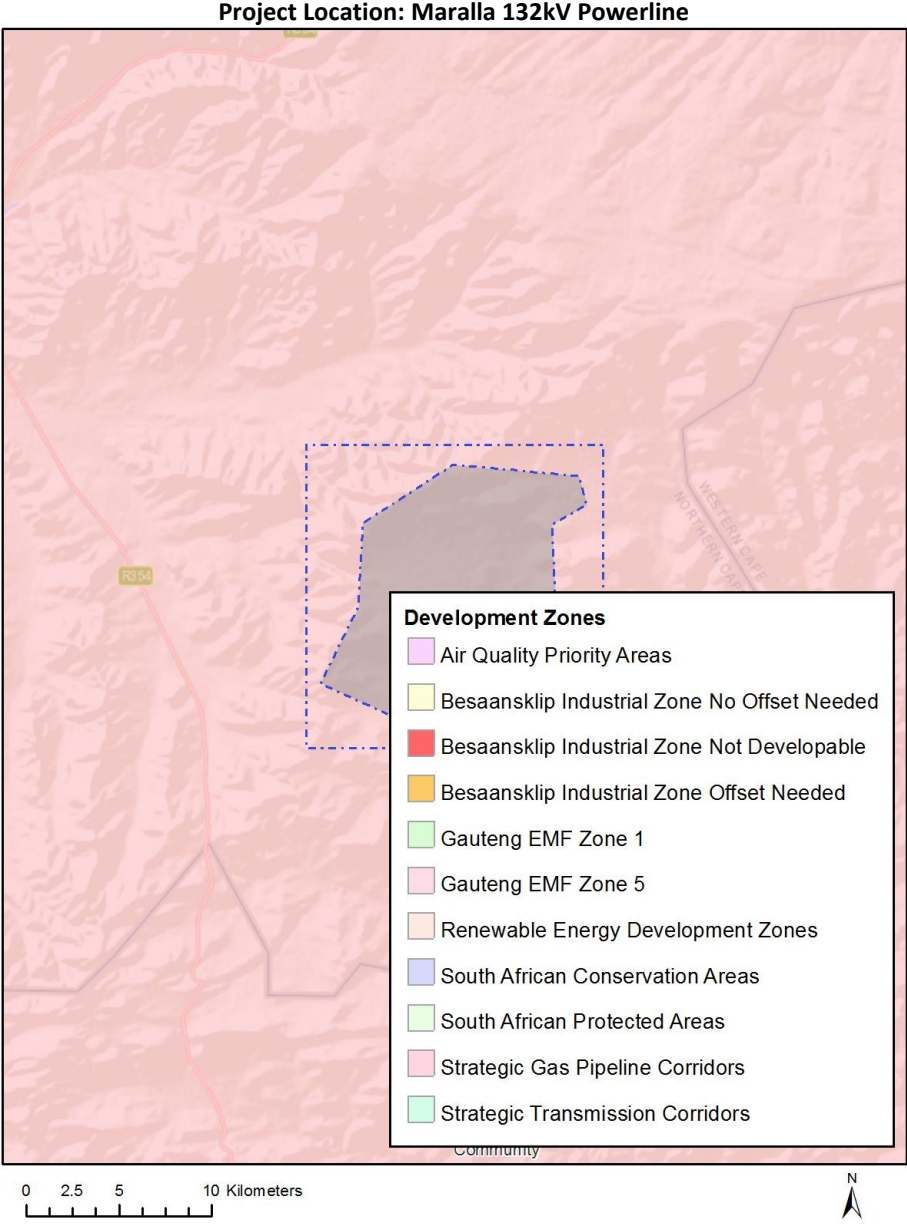
Utilities Infrastructure | Electricity | Distribution and Transmission | Powerline.

Relevant development incentives, restrictions, exclusions or prohibitions

The following development incentives, restrictions, exclusions or prohibitions and their implications that apply to this footprint are indicated below.

Incentive, restriction or prohibition	Implication
Strategic Transmission Corridor-Central corridor	https://screening.environment.gov.za/ScreeningDownloads/DevelopmentZones/GN_11_3_16_February_2018.pdf
Renewable energy development zones 2-Komsberg	https://screening.environment.gov.za/ScreeningDownloads/DevelopmentZones/GN_11_4_of_16_February_2018.pdf
Strategic Gas Pipeline Corridors-Phase 9: Inland Corridor from Saldan	https://screening.environment.gov.za/ScreeningDownloads/DevelopmentZones/Notice_411_Gazette_44551_07May2021_Strategic_Gas_Pipeline_Corridors.pdf

Map indicating proposed development footprint within applicable development incentive, restriction, exclusion or prohibition zones



Proposed Development Area Environmental Sensitivity

The following summary of the development footprint environmental sensitivities is identified. Only the highest environmental sensitivity is indicated. The footprint environmental sensitivities for the proposed development footprint as identified, are indicative only and must be verified on site by a suitably qualified person before the specialist assessments identified below can be confirmed.

Theme	Very High	High	Medium	Low
-------	-----------	------	--------	-----

	sensitivity	sensitivity	sensitivity	sensitivity
Agriculture Theme	X			
Animal Species Theme		X		
Aquatic Biodiversity Theme	X			
Archaeological and Cultural Heritage Theme		X		
Civil Aviation Theme			X	
Defence Theme				X
Paleontology Theme	X			
Plant Species Theme			X	
Terrestrial Biodiversity Theme	X			

Specialist assessments identified

Based on the selected classification, and the environmental sensitivities of the proposed development footprint, the following list of specialist assessments have been identified for inclusion in the assessment report. It is the responsibility of the EAP to confirm this list and to motivate in the assessment report, the reason for not including any of the identified specialist study including the provision of photographic evidence of the footprint situation.

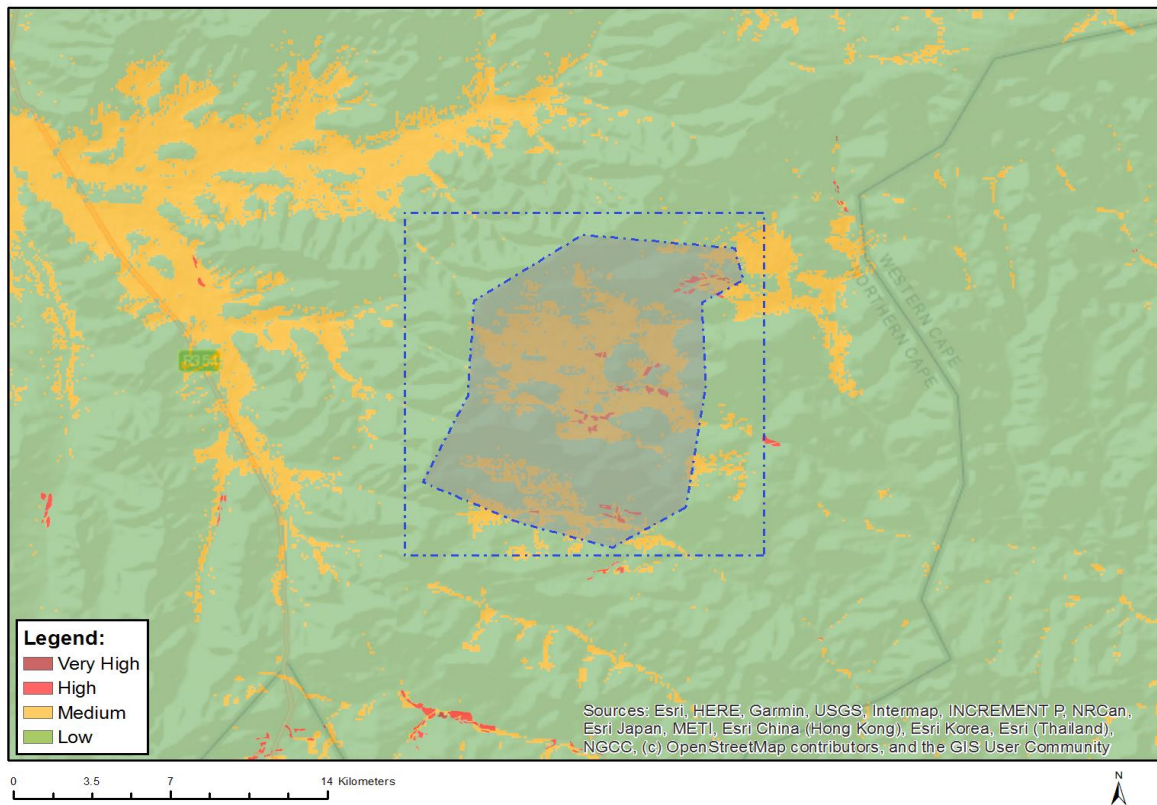
N	Specialist assessment	Assessment Protocol
1	Agricultural Impact Assessment	https://screening.environment.gov.za/ScreeningDownloads/AssessmentProtocols/Gazetted_General_Agriculture_Assessment_Protocols.pdf
2	Landscape/Visual Impact Assessment	https://screening.environment.gov.za/ScreeningDownloads/AssessmentProtocols/Gazetted_General_Requirement_Assessment_Protocols.pdf
3	Archaeological and Cultural Heritage Impact Assessment	https://screening.environment.gov.za/ScreeningDownloads/AssessmentProtocols/Gazetted_General_Requirement_Assessment_Protocols.pdf
4	Palaeontology Impact Assessment	https://screening.environment.gov.za/ScreeningDownloads/AssessmentProtocols/Gazetted_General_Requirement_Assessment_Protocols.pdf
5	Terrestrial Biodiversity Impact Assessment	https://screening.environment.gov.za/ScreeningDownloads/AssessmentProtocols/Gazetted_Terrestrial_Biodiversity_Assessment_Protocols.pdf
6	Aquatic Biodiversity	https://screening.environment.gov.za/ScreeningDownloads/AssessmentProtocols/Gazetted_Aquatic_Biodiversity_Assessment_Protocols.pdf

	Impact Assessment	
7	Avian Impact Assessment	https://screening.environment.gov.za/ScreeningDownloads/AssessmentProtocols/Gazetted_Avifauna_Assessment_Protocols.pdf
8	Civil Aviation Assessment	https://screening.environment.gov.za/ScreeningDownloads/AssessmentProtocols/Gazetted_Civil_Aviation_Installations_Assessment_Protocols.pdf
9	RFI Assessment	https://screening.environment.gov.za/ScreeningDownloads/AssessmentProtocols/Gazetted_General_Requirement_Assessment_Protocols.pdf
10	Geotechnical Assessment	https://screening.environment.gov.za/ScreeningDownloads/AssessmentProtocols/Gazetted_General_Requirement_Assessment_Protocols.pdf
11	Plant Species Assessment	https://screening.environment.gov.za/ScreeningDownloads/AssessmentProtocols/Gazetted_Plant_Species_Assessment_Protocols.pdf
12	Animal Species Assessment	https://screening.environment.gov.za/ScreeningDownloads/AssessmentProtocols/Gazetted_Animal_Species_Assessment_Protocols.pdf

Results of the environmental sensitivity of the proposed area.

The following section represents the results of the screening for environmental sensitivity of the proposed footprint for relevant environmental themes associated with the project classification. It is the duty of the EAP to ensure that the environmental themes provided by the screening tool are comprehensive and complete for the project. Refer to the disclaimer.

MAP OF RELATIVE AGRICULTURE THEME SENSITIVITY

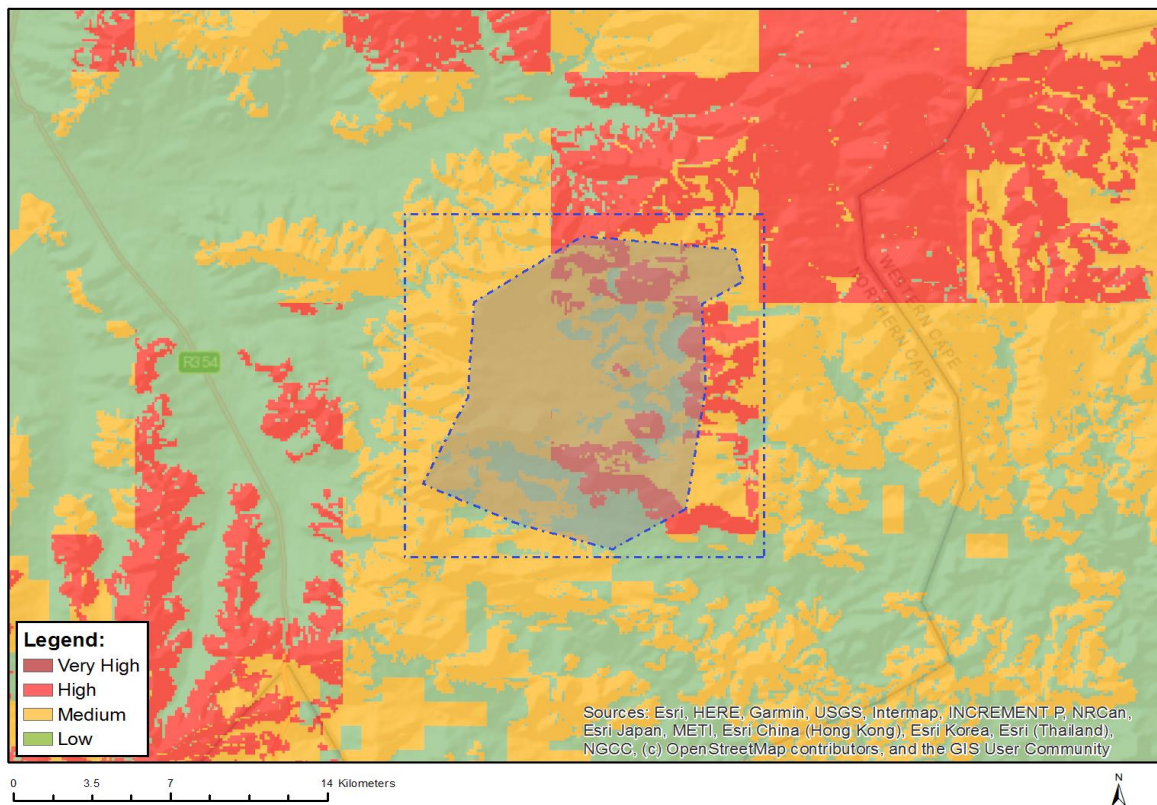


Very High sensitivity	High sensitivity	Medium sensitivity	Low sensitivity
X			

Sensitivity Features:

Sensitivity	Feature(s)
High	Annual Crop Cultivation / Planted Pastures Rotation; Land capability; 01. Very low/02. Very low/03. Low-Very low/04. Low-Very low/05. Low
High	Annual Crop Cultivation / Planted Pastures Rotation; Land capability; 06. Low-Moderate/07. Low-Moderate/08. Moderate
Low	Land capability; 01. Very low/02. Very low/03. Low-Very low/04. Low-Very low/05. Low
Medium	Land capability; 06. Low-Moderate/07. Low-Moderate/08. Moderate
Very High	Horticulture / Viticulture; Land capability; 06. Low-Moderate/07. Low-Moderate/08. Moderate
Very High	Horticulture / Viticulture; Land capability; 01. Very low/02. Very low/03. Low-Very low/04. Low-Very low/05. Low

MAP OF RELATIVE ANIMAL SPECIES THEME SENSITIVITY



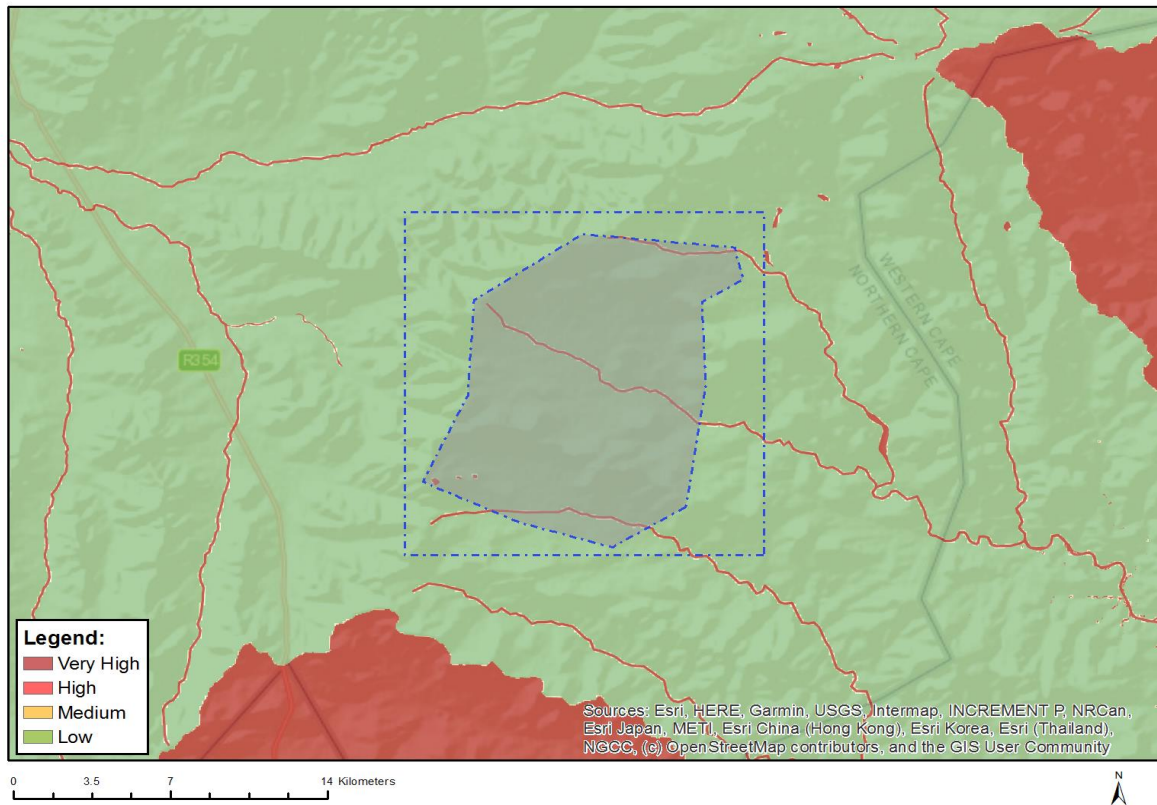
Where only a sensitive plant unique number or sensitive animal unique number is provided in the screening report and an assessment is required, the environmental assessment practitioner (EAP) or specialist is required to email SANBI at eiadatarequests@sanbi.org.za listing all sensitive species with their unique identifiers for which information is required. The name has been withheld as the species may be prone to illegal harvesting and must be protected. SANBI will release the actual species name after the details of the EAP or specialist have been documented.

Very High sensitivity	High sensitivity	Medium sensitivity	Low sensitivity
	X		

Sensitivity Features:

Sensitivity	Feature(s)
High	Aves-Aquila verreauxii
Low	Low sensitivity
Medium	Aves-Neotis ludwigii
Medium	Aves-Sagittarius serpentarius
Medium	Aves-Aquila verreauxii
Medium	Mammalia-Bunolagus monticularis

MAP OF RELATIVE AQUATIC BIODIVERSITY THEME SENSITIVITY

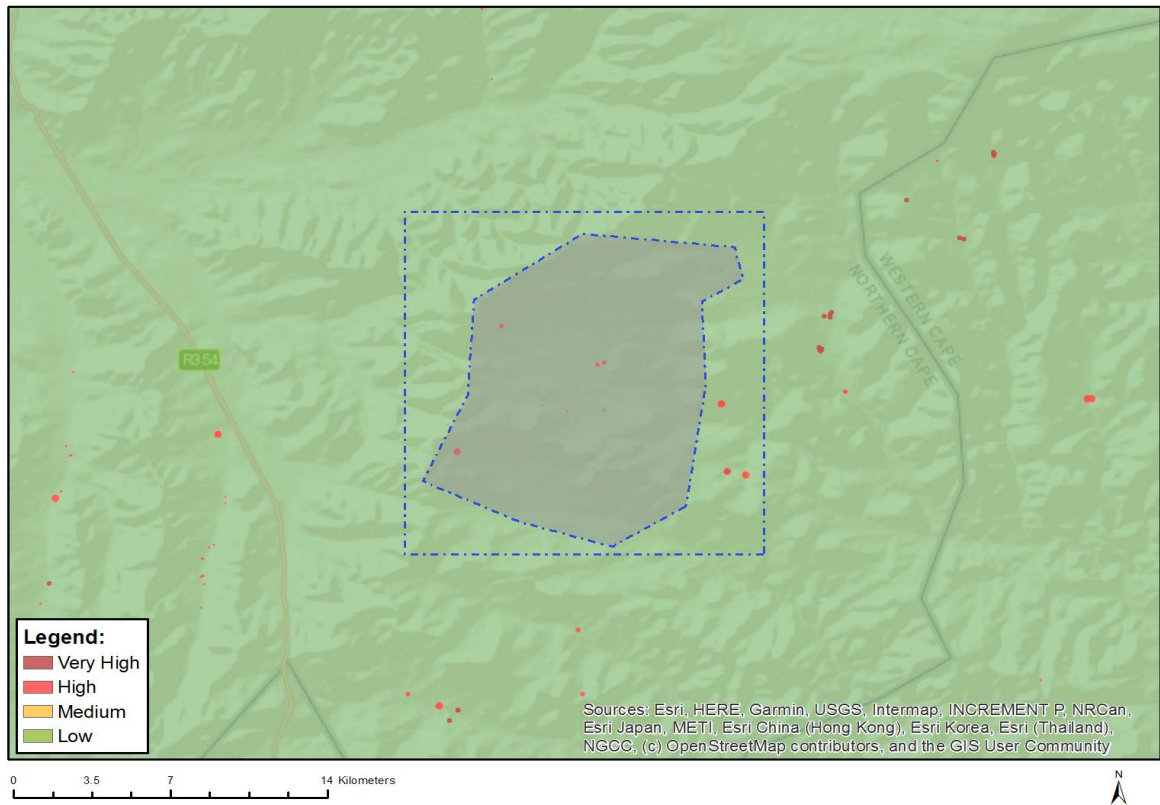


Very High sensitivity	High sensitivity	Medium sensitivity	Low sensitivity
X			

Sensitivity Features:

Sensitivity	Feature(s)
Low	Low sensitivity
Very High	Rivers
Very High	Wetlands and Estuaries

MAP OF RELATIVE ARCHAEOLOGICAL AND CULTURAL HERITAGE THEME SENSITIVITY

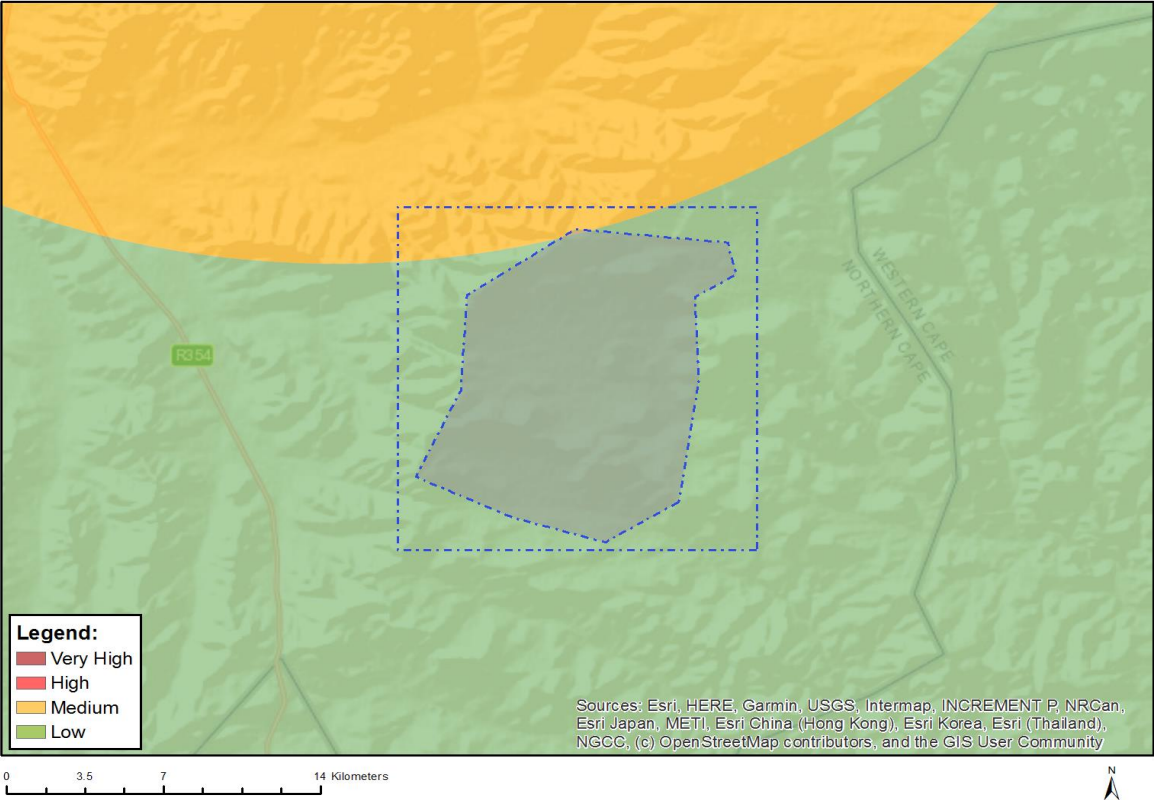


Very High sensitivity	High sensitivity	Medium sensitivity	Low sensitivity
	X		

Sensitivity Features:

Sensitivity	Feature(s)
High	Within 150m of a Grade IIIa Heritage site
High	Within 100m of a Grade IIIb Heritage site
High	Within 50m of a Grade IIIc Heritage site
Low	Low sensitivity

MAP OF RELATIVE CIVIL AVIATION THEME SENSITIVITY

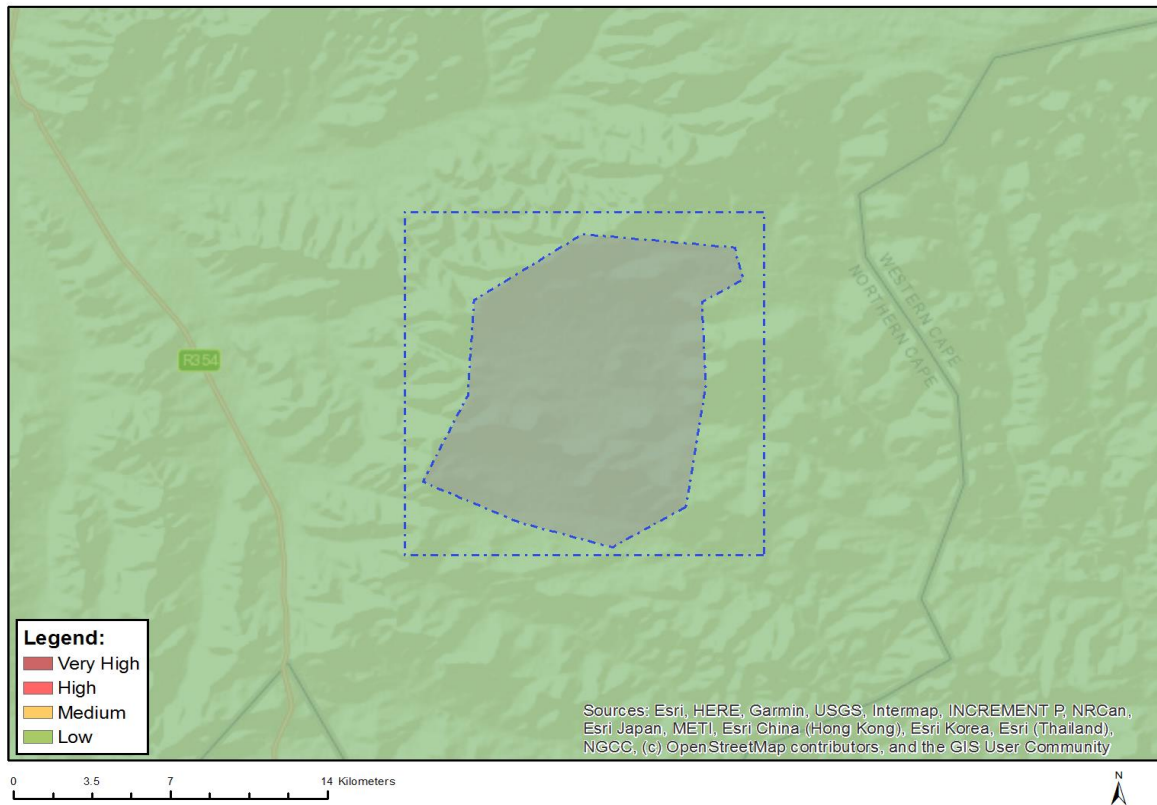


Very High sensitivity	High sensitivity	Medium sensitivity	Low sensitivity
		X	

Sensitivity Features:

Sensitivity	Feature(s)
Low	Low sensitivity
Medium	Between 15 and 35 km from a civil aviation radar

MAP OF RELATIVE DEFENCE THEME SENSITIVITY

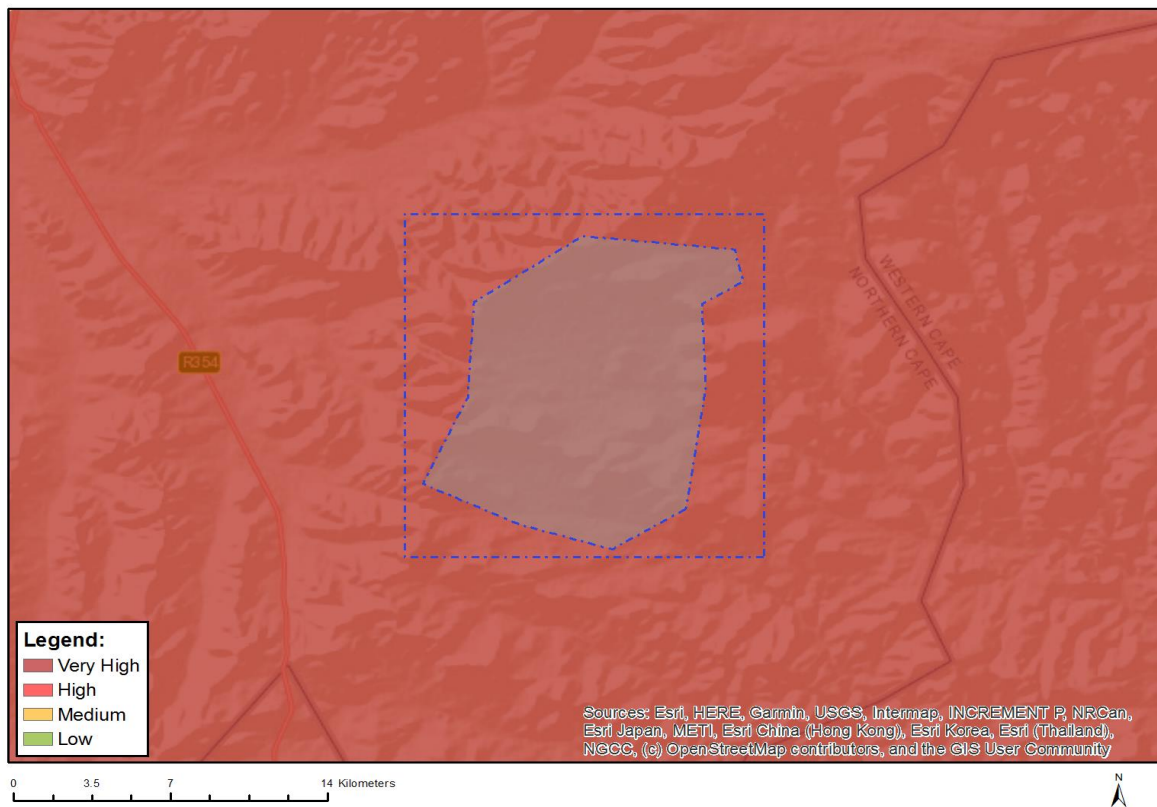


Very High sensitivity	High sensitivity	Medium sensitivity	Low sensitivity
			X

Sensitivity Features:

Sensitivity	Feature(s)
Low	Low Sensitivity

MAP OF RELATIVE PALEONTOLOGY THEME SENSITIVITY

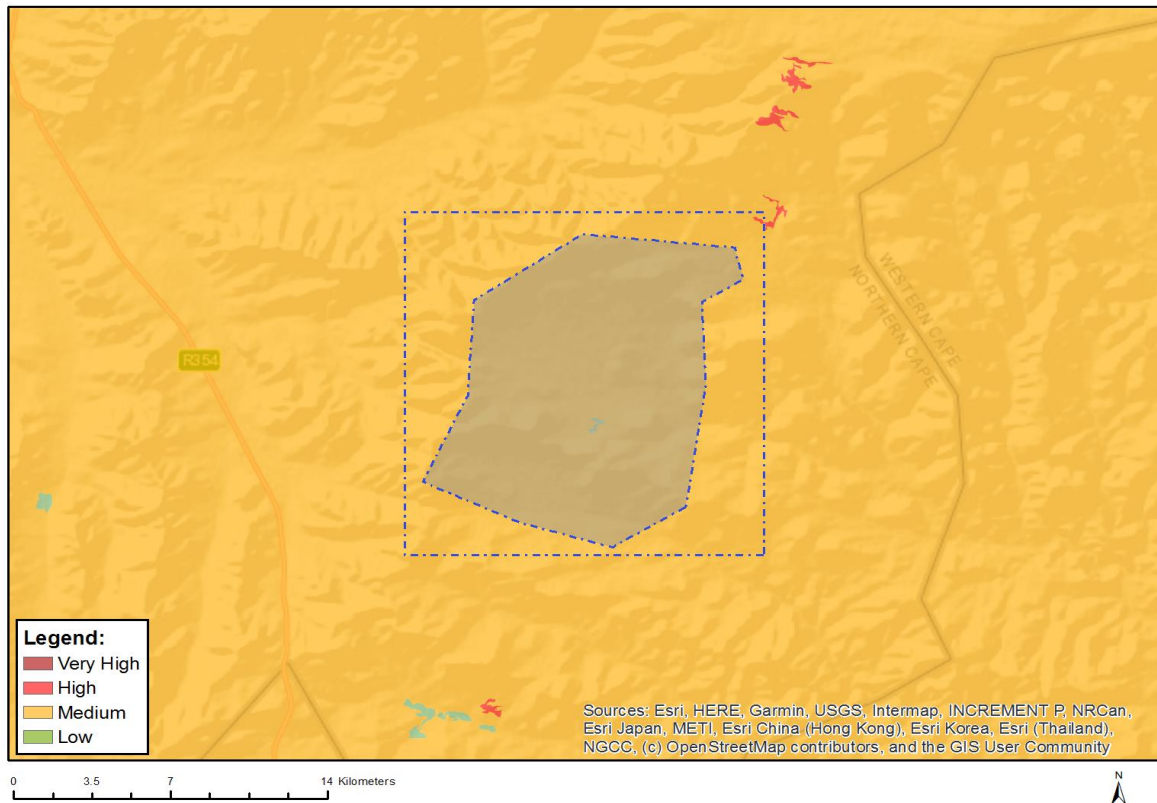


Very High sensitivity	High sensitivity	Medium sensitivity	Low sensitivity
X			

Sensitivity Features:

Sensitivity	Feature(s)
Very High	Features with a Very High paleontological sensitivity

MAP OF RELATIVE PLANT SPECIES THEME SENSITIVITY



Where only a sensitive plant unique number or sensitive animal unique number is provided in the screening report and an assessment is required, the environmental assessment practitioner (EAP) or specialist is required to email SANBI at eiadatarequests@sanbi.org.za listing all sensitive species with their unique identifiers for which information is required. The name has been withheld as the species may be prone to illegal harvesting and must be protected. SANBI will release the actual species name after the details of the EAP or specialist have been documented.

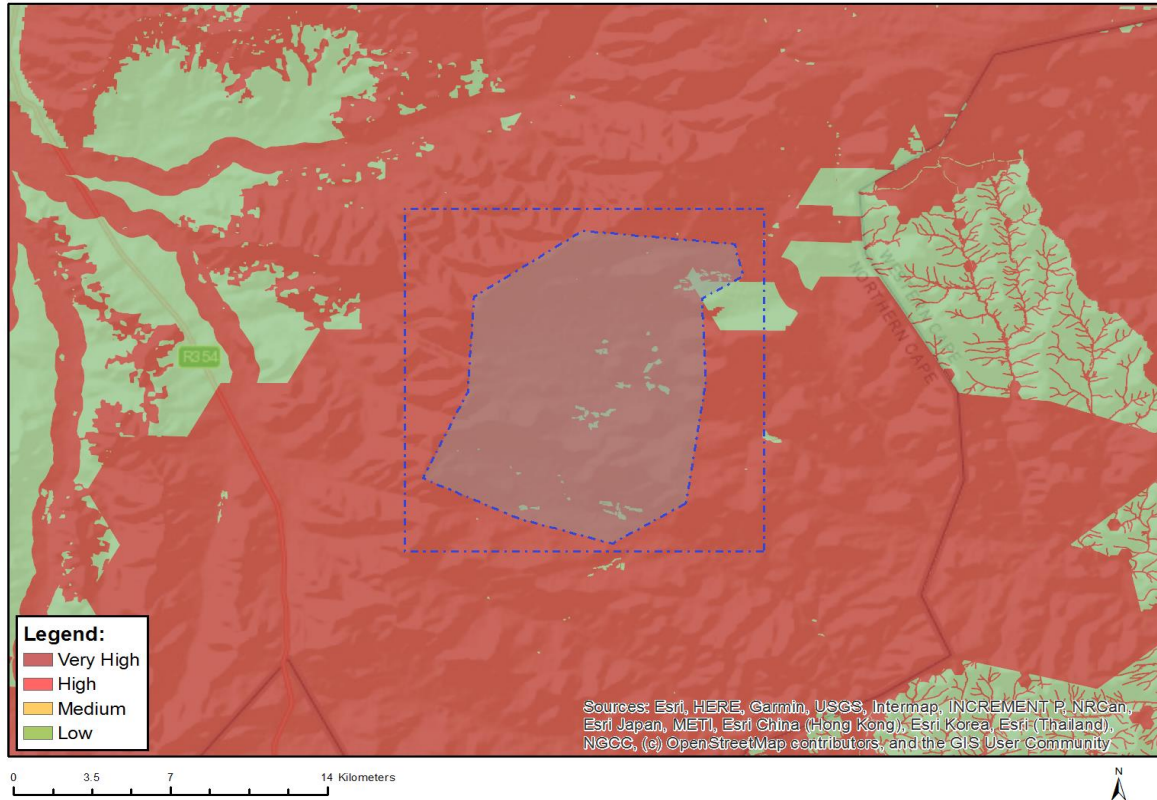
Very High sensitivity	High sensitivity	Medium sensitivity	Low sensitivity
		X	

Sensitivity Features:

Sensitivity	Feature(s)
Low	Low Sensitivity
Medium	Lotononis venosa
Medium	Zaluzianskya mirabilis
Medium	Ixia linearifolia
Medium	Romulea eburnea
Medium	Pauridia breviscapa
Medium	Sensitive species 346
Medium	Sensitive species 338
Medium	Sensitive species 936
Medium	Sensitive species 65
Medium	Adromischus phillipsiae
Medium	Sensitive species 620
Medium	Asparagus mollis
Medium	Sensitive species 142
Medium	Sensitive species 1107

Medium	Sensitive species 886
Medium	Eriocephalus grandiflorus
Medium	Sensitive species 722

MAP OF RELATIVE TERRESTRIAL BIODIVERSITY THEME SENSITIVITY



Very High sensitivity	High sensitivity	Medium sensitivity	Low sensitivity
X			

Sensitivity Features:

Sensitivity	Feature(s)
Low	Low Sensitivity
Very High	Critical Biodiversity Area 1
Very High	Critical Biodiversity Area 2
Very High	Ecological Support Area
Very High	Focus Areas for land-based protected areas expansion