

WHAT IS THE PUBLIC PARTICIPATION PROCESS ?

The public participation process gives **you** the opportunity to:

- ✓ Get clear, accurate and understandable information about proposed project, as well as the expected social and environmental impacts it may have;
- ✓ Voice your concerns and to raise questions about the BA process for the proposed project;
- ✓ Suggest ways for reducing or mitigating any negative impacts of the proposed project, and for potentially increasing its benefits;
- ✓ Provide the applicant, *Eskom Holdings (SOC) Ltd*, with an opportunity to consider the needs, preferences and values of yourself and your fellow I&APs in their decisions;
- ✓ Be involved in the sharing of information, which forms the backbone of public participation and offers you the chance to become actively involved in the project from the outset;
- ✓ Fully understand the intention of the environmental investigation, as your input ensures that all relevant issues are considered in the BA process; and
- ✓ Influence the decision-making process of the competent authority, the *Department of Forestry, Fisheries and the Environment (DFFE)* by ensuring that they have all relevant information at hand.

BENEFITS OF REGISTERING

As a registered I&AP you are entitled to the following:

- ✓ Invitations to public events (if any);
- ✓ Information on the project;
- ✓ An opportunity to participate in the BA processes; and
- ✓ Access to information and reports that are available for public comment.

HOW TO REGISTER

To register and be involved you should do the following:

- ✓ Respond to the relevant newspaper advertisements, site notice or notification letter.;
- ✓ Provide us with your contact details via telephone, fax or e-mail. This is so that we may get in touch with you in relation to the processes; and
- ✓ Attend public participation events, if any. This provides you with a one-on-one opportunity to engage with the EAP's project team about the project and the processes.

BACKGROUND INFORMATION DOCUMENT

BASIC ASSESSMENT (BA) PROCESS FOR THE PROPOSED DEVELOPMENT OF A BATTERY ENERGY STORAGE SYSTEM (BESS) AND ASSOCIATED INFRASTRUCTURE AT THE CUPRUM SUBSTATION LOCATED WITHIN COPPERTON, NEAR THE TOWN OF PRIESKA, NORTHERN CAPE PROVINCE

August 2022

PURPOSE OF THE DOCUMENT

The intention of this Background Information Document (BID) is to inform interested and/or affected parties (I&APs) about the BA process for the proposed Eskom project. The proposed project is located within Copperton, near the town of Prieska, Northern Cape Province.

Eskom (SOC) Ltd is applying for Environmental Authorisation (EA) from the competent authority, the **Department of Forestry, Fisheries and the Environment (DFFE)** for the proposed development of a Battery Energy Storage System (BESS) and associated infrastructure at the Cuprum substation.

A BA process must be undertaken to support the application for EA. This BA process will be undertaken in terms of Government Notice Regulations (GNR) No. 982, 983 and 985 of the Environmental Impact Assessment (EIA) Regulations (2014), as amended. The EIA Regulations were promulgated in terms of the National Environmental Management Act, 1998 (Act No. 107 of 1998), as amended (NEMA). This BA process will follow the requirements listed in Section 19-20 and Appendix 1 of GNR 982 of the EIA Regulations (2014), as amended.

As an I&AP, you are invited to engage in this BA process by submitting your comments to the project team. Your participation will help in identifying potential environmental and social impacts to be assessed as part of the BA process.

Mrs Sarah Caulfield from AECOM (Pty) Ltd (AECOM) has been appointed as the independent Environmental Assessment Practitioner (EAP) for the management of the BA process. Please provide your inputs utilising the following contact details:

Sarah Caulfield
AECOM
Mobile: +27 82 385 9881
Post: P O Box 3173, Pretoria, 0001
Email: sarah.caulfield@aecom.com

PROJECT DESCRIPTION

A BESS is a technology developed for storing electric charge by using specially developed batteries.

This project involves the installation and establishment of a BESS and associated infrastructure to accommodate the storage of energy at the existing Cuprum substation located within Copperton, near the town of Prieska in the Northern Cape Province.

The project will provide energy support to business services within the area, integrate energy from the surrounding renewable facilities into the grid and act as a distributor collector substation for the surrounding substations. The BESS will typically store energy during the low demand load periods at night (23h00 to 4h59) and provide ancillary energy services into the grid during high demand periods in the day (5h00 to 22h59). The project activities will specifically include the following:

- Re-alignment of the Cuprum/Karoo 66kV and Cuprum/Kronos 11kV overhead lines along the peripheries of the Eskom property boundary to make provision for the BESS and substation expansion;
- Extension of the Cuprum Substation's fence around the substation to include the BESS area;
- Extension of the Cuprum Substation's 132kV busbar to make provision for the new transformer which will extend the substation on the south-western side;
- Installation of control panels for the BESS within the existing control room located within the Cuprum Substation;
- Establishment of the BESS containers on a cleared area and connection to Eskom grid infrastructure;
- Extension of the existing road by 180m which will connect to the runway inside the Cuprum substation; and
- Re-alignment of a 170m water pipeline with a diameter of 32mm.

Organisations involved

Applicant	Eskom Holdings (SOC) Ltd.
Independent EAP	Mrs. Sarah Caulfield from AECOM SA (Pty)Ltd
Environmental Authority	Department of Forestry, Fisheries and the Environment (DFFE)

Specialist studies

The following specialist studies have been undertaken:

- Ecological Assessment
- Heritage Assessment
- Palaeontological Assessment
- Avifauna Assessment
- Aquatic Site Verification Assessment

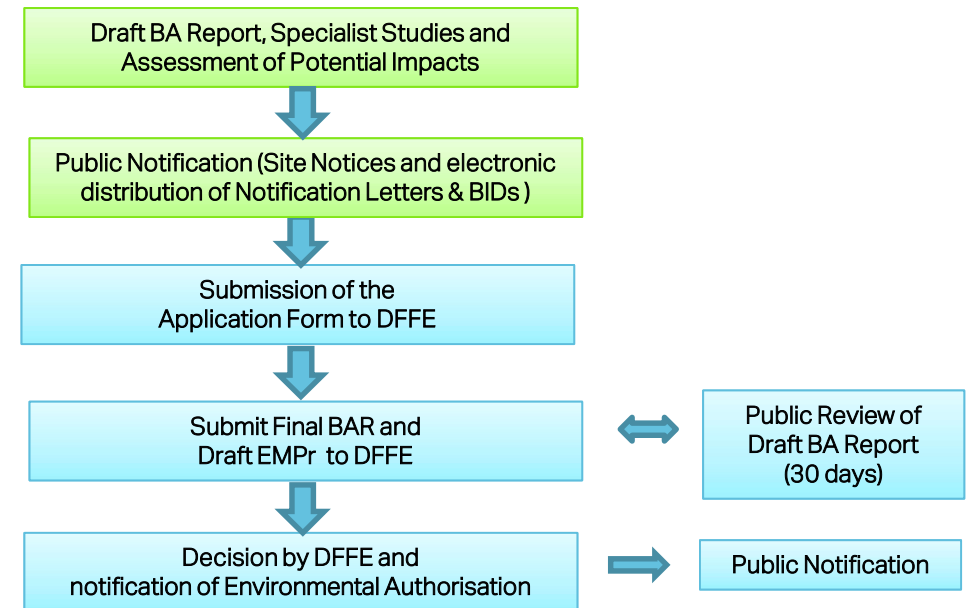
2

WHAT IS THE BASIC ASSESSMENT PROCESS?

A comprehensive and independent BA process identifies and assesses possible impacts associated with the proposed project, and provides mitigation measures to reduce the anticipated negative impacts and enhance the positive ones. It also contains recommendations regarding the conditions under which the DFFE should grant or refuse EA for the proposed project. Importantly, the BA process requires a comprehensive public participation process (PPP).

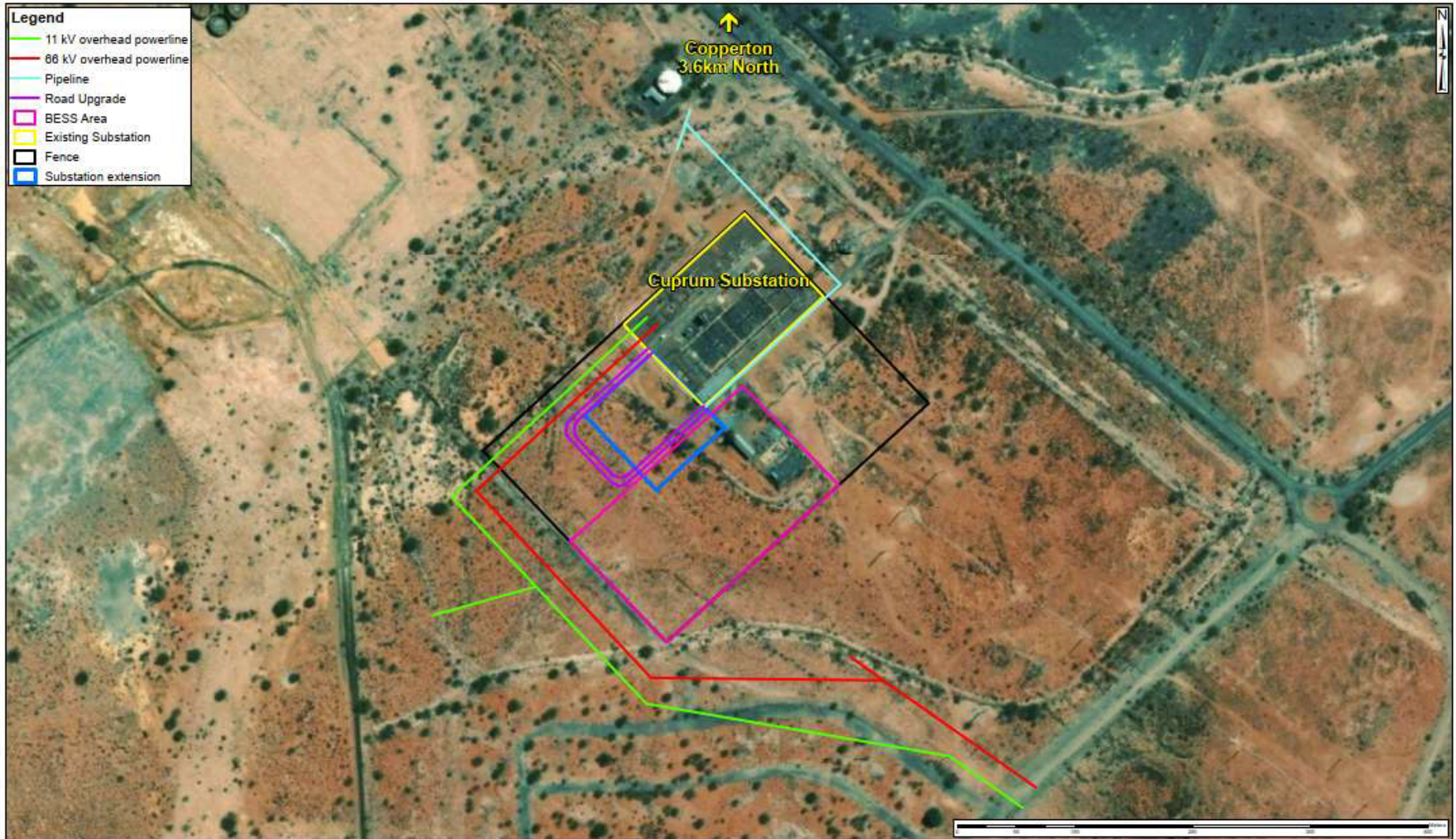
The BA process has already commenced, and is reflected in the flowchart below. We are currently at the steps shown in green. The next steps in the process are as follows:

1. The BA Report is to be compiled, inclusive of specialist studies and an Environmental Management Programme (EMPr).
2. An application for EA will be submitted to the DFFE.
3. I&APs will be given an opportunity to comment on the Draft BA Report, which will be made available to all I&APs for a period of 30 calendar days.
4. The Draft BA Report will be revised to include and address your comments, and a Final BA Report will be submitted to the DFFE for its consideration.
5. The DFFE reviews the documents and makes a decision regarding the proposed project. The DFFE's decision will be to **grant** or **refuse** EA, under specific conditions.
6. A copy of the EA document (which contains the reasons for the decision reached) will be made available to all registered I&APs for consideration. If you disagree with the decision, you will be provided with information on how to lodge an appeal.



3

LOCALITY MAP



Project Title:	Eskom Battery Energy Storage System (BESS): Basic Assessment	Scale 1:3 000	Figure 1
Map Title:	Locality Map	Projection: Transverse Mercator Datum: Hartbeestreek 1984 Central Meridian: 23.0 G.A. Maseko	Source: Esri, DeLorme, GeoEye, Earthstar, Geographic, CNES/Airbus DS, USDA, USGS, AeroGRID, IGN, and the GIS User Community National Geographic, Esri, DeLorme, HERE, UNEP-WFP, USGS, NASA, ESA, METI, NRCAN, GEBCO, NOAA, increment P Corp.
<small>Where every care has been taken in compiling the information on this map, AECOM cannot accept responsibility for any inaccuracies.</small>		<small>Copyright</small> Compiled By: G.A. Maseko GIS QC By: D. Gwendler Approved By: D. Gwendler Date Saved: 2021/04/03 Project Number: 66457237 Map Ref: LocalityPlan.mxd Revision: 00	L:\LegacyGISData7_Projects\66457237_EskomBESS_Prelim\LocalityPlan.mxd

