

**SCREENING REPORT FOR AN ENVIRONMENTAL AUTHORIZATION AS
REQUIRED BY THE 2014 EIA REGULATIONS – PROPOSED DEVELOPMENT
FOOTPRINT ENVIRONMENTAL SENSITIVITY**

EIA Reference number: TBC

Project name: Esizayo 132kV Powerline

Project title: Basic Assessment

Date screening report generated: 23/07/2021 17:43:29

Applicant: BTE Renewables

Compiler: WSP Group Africa (Pty) Ltd

Compiler signature:
.....

Application Category: Utilities Infrastructure | Electricity | Distribution and Transmission | Powerline

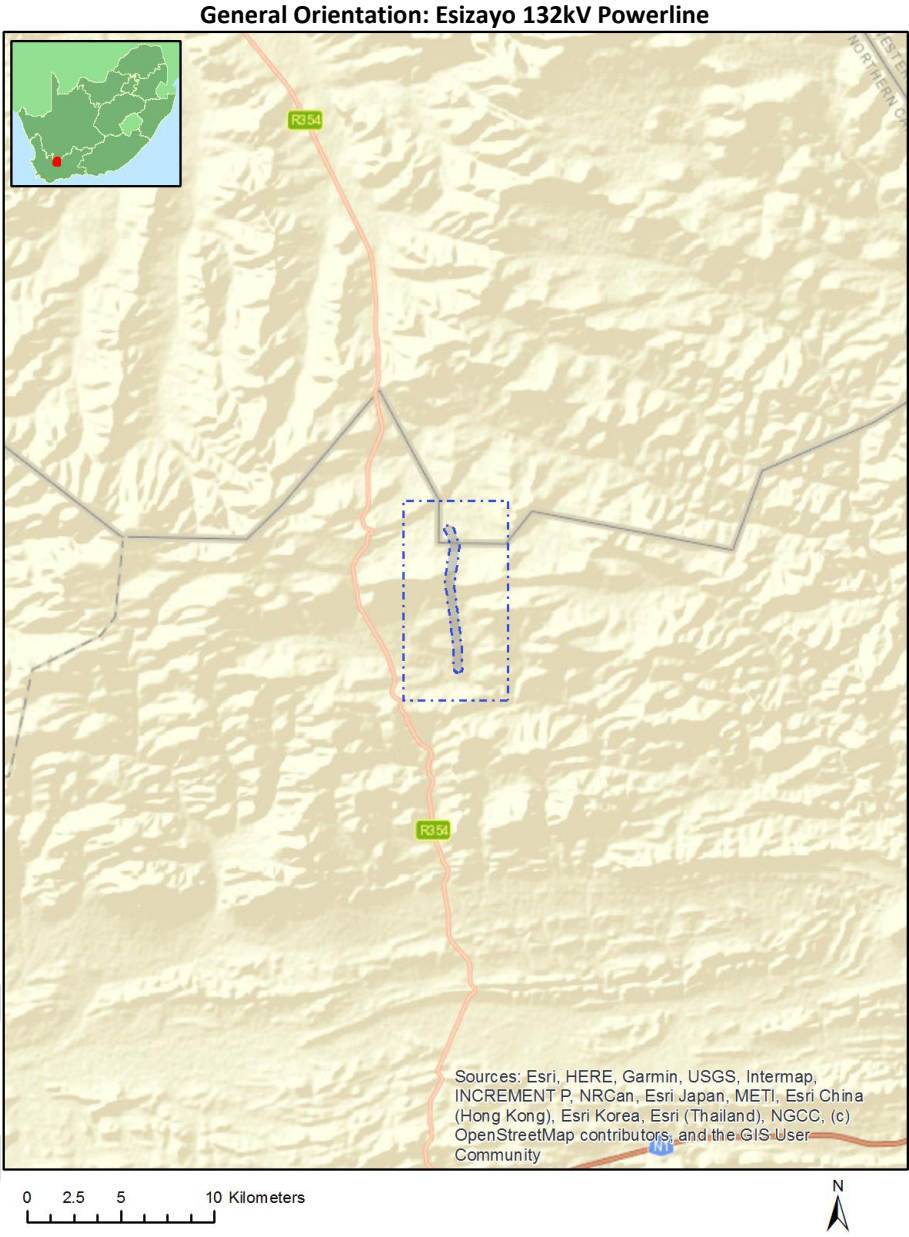


Table of Contents

Proposed Project Location	3
Orientation map 1: General location	3
Map of proposed site and relevant area(s)	4
Cadastral details of the proposed site	4
Wind and Solar developments with an approved Environmental Authorisation or applications under consideration within 30 km of the proposed area	6
Environmental Management Frameworks relevant to the application	6
Environmental screening results and assessment outcomes	6
Relevant development incentives, restrictions, exclusions or prohibitions	6
Map indicating proposed development footprint within applicable development incentive, restriction, exclusion or prohibition zones	8
Proposed Development Area Environmental Sensitivity	8
Specialist assessments identified	9
Results of the environmental sensitivity of the proposed area	11
MAP OF RELATIVE AGRICULTURE THEME SENSITIVITY	11
MAP OF RELATIVE ANIMAL SPECIES THEME SENSITIVITY	12
MAP OF RELATIVE AQUATIC BIODIVERSITY THEME SENSITIVITY	13
MAP OF RELATIVE ARCHAEOLOGICAL AND CULTURAL HERITAGE THEME SENSITIVITY	14
MAP OF RELATIVE CIVIL AVIATION THEME SENSITIVITY	15
MAP OF RELATIVE DEFENCE THEME SENSITIVITY	16
MAP OF RELATIVE PALEONTOLOGY THEME SENSITIVITY	17
MAP OF RELATIVE PLANT SPECIES THEME SENSITIVITY	18
MAP OF RELATIVE TERRESTRIAL BIODIVERSITY THEME SENSITIVITY	19

Proposed Project Location

Orientation map 1: General location



Map of proposed site and relevant area(s)



Cadastral details of the proposed site

Property details:

No	Farm Name	Farm/ Erf No	Portion	Latitude	Longitude	Property Type
1	AURORA	285	0	33°0'1.83S	20°35'54E	Farm
2	BON ESPIRANGE	73	0	32°55'20.12S	20°32'59.19E	Farm
3	LEEUFONTEIN	71	0	32°57'35.31S	20°40'40.25E	Farm
4	AANSTOOT	72	0	32°57'59.85S	20°36'57.49E	Farm
5		105	0	32°56'37.63S	20°34'28.92E	Farm
6	STANDVASTIGHEID	210	0	32°54'6.93S	20°37'0.58E	Farm
7		105	0	32°56'37.63S	20°34'28.92E	Farm Portion
8	LEEUFONTEIN	71	0	32°57'31.22S	20°39'50.13E	Farm Portion
9	AANSTOOT	72	2	32°57'53.22S	20°36'56.55E	Farm Portion
10	BON ESPIRANGE	73	1	32°54'59.15S	20°33'49.06E	Farm Portion
11	STANDVASTIGHEID	210	0	32°54'6.21S	20°37'1.09E	Farm Portion
12	STANDVASTIGHEID	210	2	32°56'1.29S	20°35'40.15E	Farm Portion
13	AURORA	285	0	32°59'45.06S	20°35'35.26E	Farm Portion

Development footprint¹ vertices:

Footprint	Latitude	Longitude
1	32°59'39.11S	20°35'56.79E
1	32°59'39.07S	20°35'55.9E
1	32°59'38.93S	20°35'55.02E
1	32°59'38.73S	20°35'54.16E
1	32°59'38.43S	20°35'53.34E

¹ "development footprint", means the area within the site on which the development will take place and includes all ancillary developments for example roads, power lines, boundary walls, paving etc. which require vegetation clearance or which will be disturbed and for which the application has been submitted.

1	32°59'38.04S	20°35'52.57E
1	32°59'37.6S	20°35'51.84E
1	32°59'37.08S	20°35'51.2E
1	32°59'36.5S	20°35'50.61E
1	32°59'35.87S	20°35'50.13E
1	32°59'35.2S	20°35'49.72E
1	32°59'34.48S	20°35'49.41E
1	32°59'33.76S	20°35'49.21E
1	32°59'33S	20°35'49.11E
1	32°59'32.92S	20°35'49.1E
1	32°59'1.04S	20°35'47.39E
1	32°57'55.66S	20°35'38.28E
1	32°57'28.35S	20°35'34.17E
1	32°57'27.91S	20°35'34.12E
1	32°57'27.15S	20°35'34.12E
1	32°57'26.52S	20°35'34.2E
1	32°56'35.53S	20°35'43.69E
1	32°56'13.71S	20°35'33.61E
1	32°56'13.21S	20°35'33.41E
1	32°56'12.49S	20°35'33.21E
1	32°56'11.73S	20°35'33.1E
1	32°56'10.98S	20°35'33.1E
1	32°56'10.23S	20°35'33.21E
1	32°56'9.49S	20°35'33.41E
1	32°56'8.79S	20°35'33.72E
1	32°56'8.11S	20°35'34.12E
1	32°56'7.47S	20°35'34.62E
1	32°56'6.9S	20°35'35.19E
1	32°56'6.39S	20°35'35.85E
1	32°56'5.94S	20°35'36.55E
1	32°56'5.57S	20°35'37.33E
1	32°56'5.25S	20°35'38.15E
1	32°56'5.04S	20°35'39.01E
1	32°56'4.91S	20°35'39.89E
1	32°56'4.87S	20°35'40.79E
1	32°56'4.91S	20°35'41.68E
1	32°56'5.04S	20°35'42.56E
1	32°56'5.25S	20°35'43.42E
1	32°56'5.57S	20°35'44.24E
1	32°56'5.94S	20°35'45.02E
1	32°56'6.39S	20°35'45.74E
1	32°56'6.9S	20°35'46.39E
1	32°56'7.47S	20°35'46.96E
1	32°56'8.11S	20°35'47.45E
1	32°56'8.79S	20°35'47.85E
1	32°56'9.01S	20°35'47.96E
1	32°56'32.45S	20°35'58.79E
1	32°56'32.95S	20°35'58.98E
1	32°56'33.68S	20°35'59.19E
1	32°56'34.43S	20°35'59.29E
1	32°56'35.19S	20°35'59.29E
1	32°56'35.82S	20°35'59.22E
1	32°57'27.63S	20°35'49.58E
1	32°57'54.04S	20°35'53.57E
1	32°58'59.75S	20°36'2.73E
1	32°59'0.22S	20°36'2.76E
1	32°59'32.33S	20°36'4.49E
1	32°59'33S	20°36'4.49E
1	32°59'33.76S	20°36'4.38E
1	32°59'34.48S	20°36'4.18E

1	32°59'35.2S	20°36'3.87E
1	32°59'35.87S	20°36'3.47E
1	32°59'36.5S	20°36'2.97E
1	32°59'37.08S	20°36'2.4E
1	32°59'37.6S	20°36'1.75E
1	32°59'38.04S	20°36'1.02E
1	32°59'38.43S	20°36'0.25E
1	32°59'38.73S	20°35'59.43E
1	32°59'38.93S	20°35'58.58E
1	32°59'39.07S	20°35'57.69E
1	32°59'39.11S	20°35'56.79E

Wind and Solar developments with an approved Environmental Authorisation or applications under consideration within 30 km of the proposed area

No nearby wind or solar developments found.

Environmental Management Frameworks relevant to the application

No intersections with EMF areas found.

Environmental screening results and assessment outcomes

The following sections contain a summary of any development incentives, restrictions, exclusions or prohibitions that apply to the proposed development footprint as well as the most environmental sensitive features on the footprint based on the footprint sensitivity screening results for the application classification that was selected. The application classification selected for this report is:

Utilities Infrastructure | Electricity | Distribution and Transmission | Powerline.

Relevant development incentives, restrictions, exclusions or prohibitions

The following development incentives, restrictions, exclusions or prohibitions and their implications that apply to this footprint are indicated below.

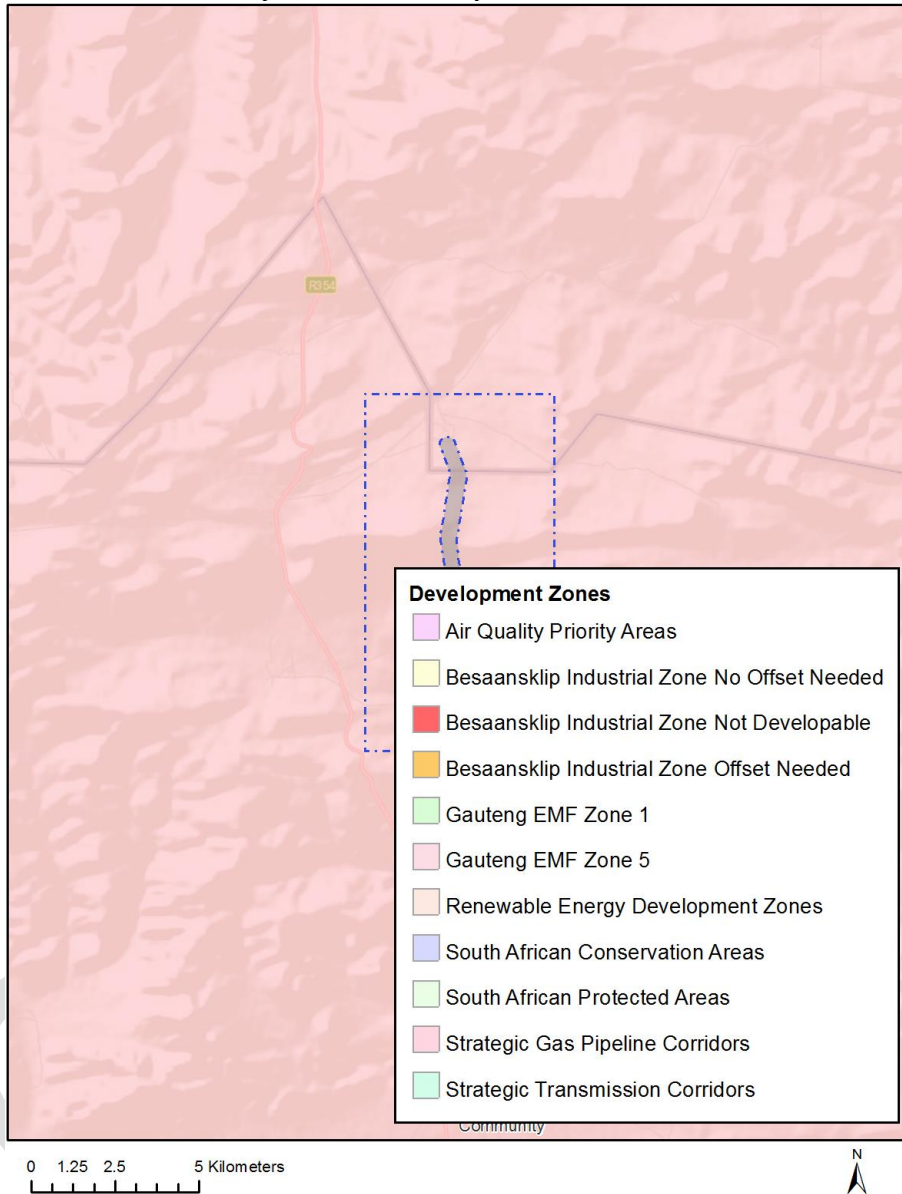
Incentive, restriction or prohibition	Implication
Strategic Transmission Corridor	https://screening.environment.gov.za/ScreeningDownloads/DevelopmentZones/GN_11_3_16_February_2018.pdf

or-Central corridor	
Renewable energy development zones 2-Komsberg	https://screening.environment.gov.za/ScreeningDownloads/DevelopmentZones/GN_114_of_16_February_2018.pdf
Strategic Gas Pipeline Corridors-Phase 9: Inland Corridor from Saldanha to Coega	https://screening.environment.gov.za/ScreeningDownloads/DevelopmentZones/Notice_411_Gazette_44551_07May2021_Strategic_Gas_Pipeline_Corridors.pdf

OFFICIAL

Map indicating proposed development footprint within applicable development incentive, restriction, exclusion or prohibition zones

Project Location: Esizayo 132kV Powerline



Proposed Development Area Environmental Sensitivity

The following summary of the development footprint environmental sensitivities is identified. Only the highest environmental sensitivity is indicated. The footprint environmental sensitivities for the proposed development footprint as identified, are indicative only and must be verified on site by a suitably qualified person before the specialist assessments identified below can be confirmed.

Theme	Very High sensitivity	High sensitivity	Medium sensitivity	Low sensitivity
Agriculture Theme				X
Animal Species Theme		X		

Aquatic Biodiversity Theme	X			
Archaeological and Cultural Heritage Theme				X
Civil Aviation Theme				X
Defence Theme				X
Paleontology Theme	X			
Plant Species Theme			X	
Terrestrial Biodiversity Theme	X			

Specialist assessments identified

Based on the selected classification, and the environmental sensitivities of the proposed development footprint, the following list of specialist assessments have been identified for inclusion in the assessment report. It is the responsibility of the EAP to confirm this list and to motivate in the assessment report, the reason for not including any of the identified specialist study including the provision of photographic evidence of the footprint situation.

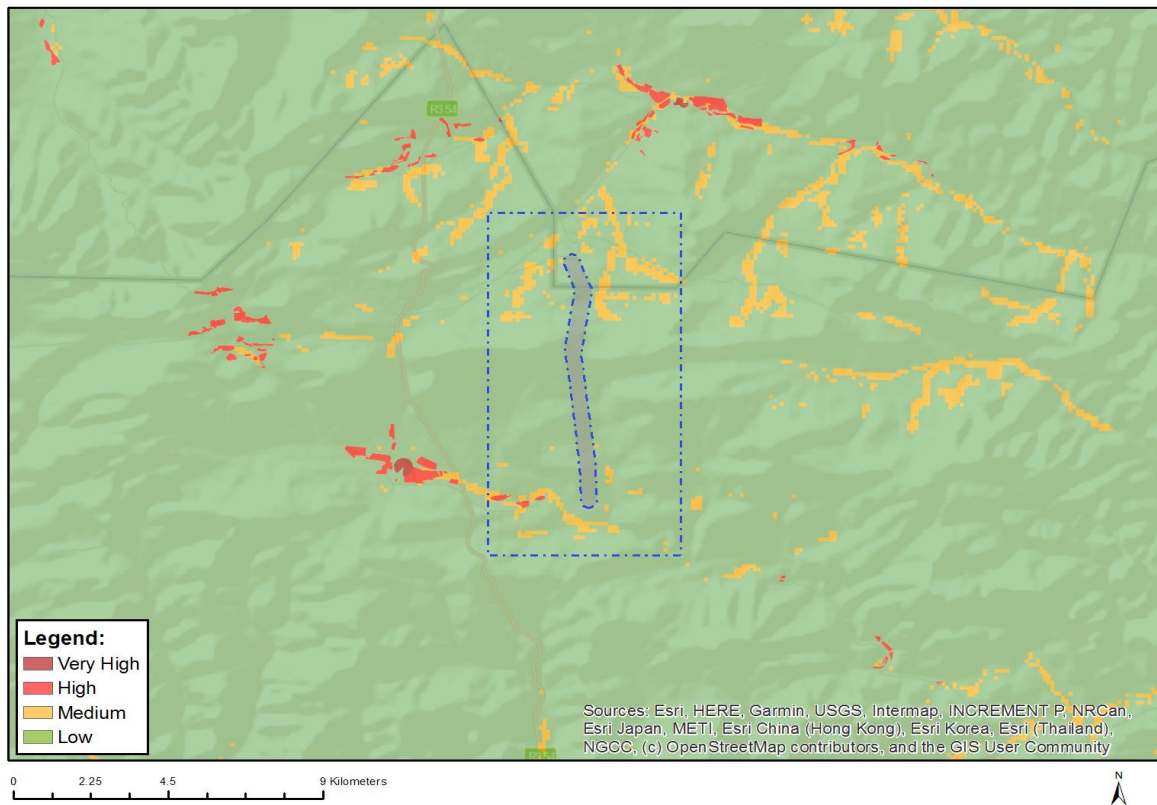
N o	Special ist assess ment	Assessment Protocol
1	Agricultural Impact Assessment	https://screening.environment.gov.za/ScreeningDownloads/AssessmentProtocols/Gazetted_General_Agriculture_Assessment_Protocols.pdf
2	Landscape/Visual Impact Assessment	https://screening.environment.gov.za/ScreeningDownloads/AssessmentProtocols/Gazetted_General_Requirement_Assessment_Protocols.pdf
3	Archaeological and Cultural Heritage Impact Assessment	https://screening.environment.gov.za/ScreeningDownloads/AssessmentProtocols/Gazetted_General_Requirement_Assessment_Protocols.pdf
4	Palaeontology Impact Assessment	https://screening.environment.gov.za/ScreeningDownloads/AssessmentProtocols/Gazetted_General_Requirement_Assessment_Protocols.pdf
5	Terrestrial Biodiversity Impact Assessment	https://screening.environment.gov.za/ScreeningDownloads/AssessmentProtocols/Gazetted_Terrestrial_Biodiversity_Assessment_Protocols.pdf
6	Aquatic Biodiversity Impact Assessment	https://screening.environment.gov.za/ScreeningDownloads/AssessmentProtocols/Gazetted_Aquatic_Biodiversity_Assessment_Protocols.pdf

7	Avian Impact Assessment	https://screening.environment.gov.za/ScreeningDownloads/AssessmentProtocols/Gazetted_Avifauna_Assessment_Protocols.pdf
8	Civil Aviation Assessment	https://screening.environment.gov.za/ScreeningDownloads/AssessmentProtocols/Gazetted_Civil_Aviation_Installations_Assessment_Protocols.pdf
9	RFI Assessment	https://screening.environment.gov.za/ScreeningDownloads/AssessmentProtocols/Gazetted_General_Requirement_Assessment_Protocols.pdf
10	Geotechnical Assessment	https://screening.environment.gov.za/ScreeningDownloads/AssessmentProtocols/Gazetted_General_Requirement_Assessment_Protocols.pdf
11	Plant Species Assessment	https://screening.environment.gov.za/ScreeningDownloads/AssessmentProtocols/Gazetted_Plant_Species_Assessment_Protocols.pdf
12	Animal Species Assessment	https://screening.environment.gov.za/ScreeningDownloads/AssessmentProtocols/Gazetted_Animal_Species_Assessment_Protocols.pdf

Results of the environmental sensitivity of the proposed area.

The following section represents the results of the screening for environmental sensitivity of the proposed footprint for relevant environmental themes associated with the project classification. It is the duty of the EAP to ensure that the environmental themes provided by the screening tool are comprehensive and complete for the project. Refer to the disclaimer.

MAP OF RELATIVE AGRICULTURE THEME SENSITIVITY

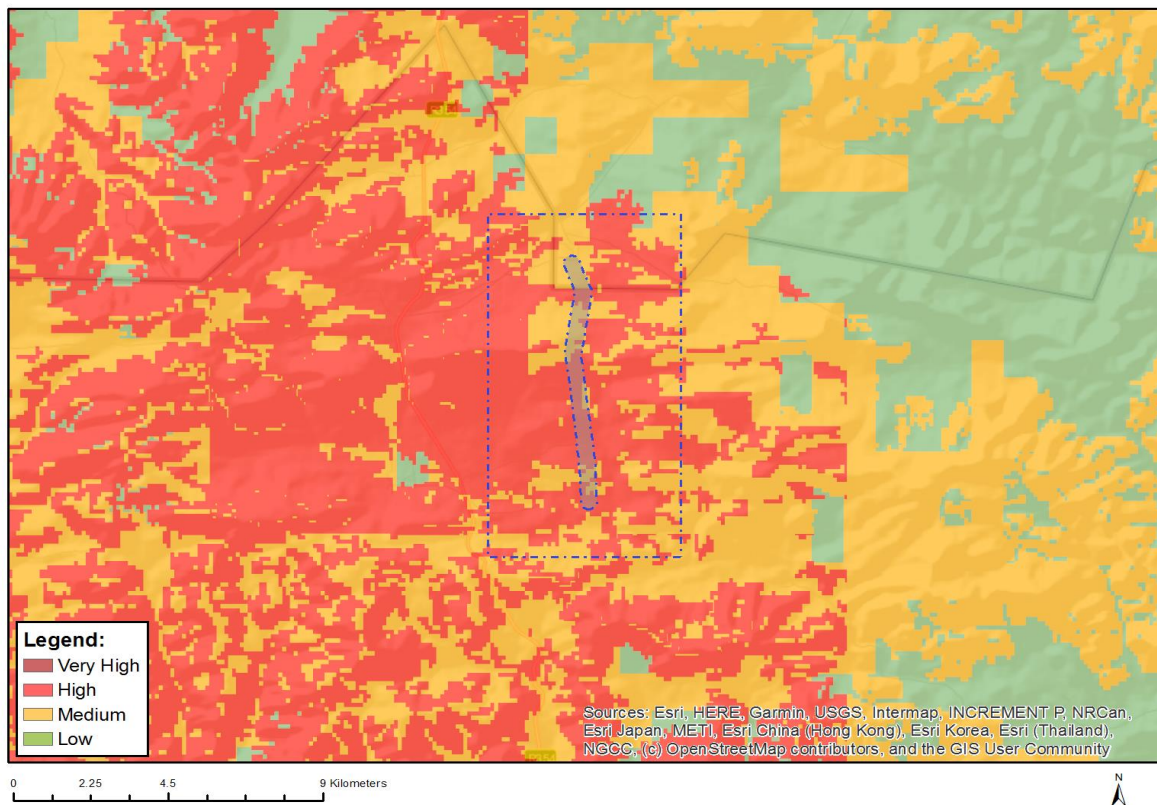


Very High sensitivity	High sensitivity	Medium sensitivity	Low sensitivity
			X

Sensitivity Features:

Sensitivity	Feature(s)
Low	Land capability;01. Very low/02. Very low/03. Low-Very low/04. Low-Very low/05. Low

MAP OF RELATIVE ANIMAL SPECIES THEME SENSITIVITY



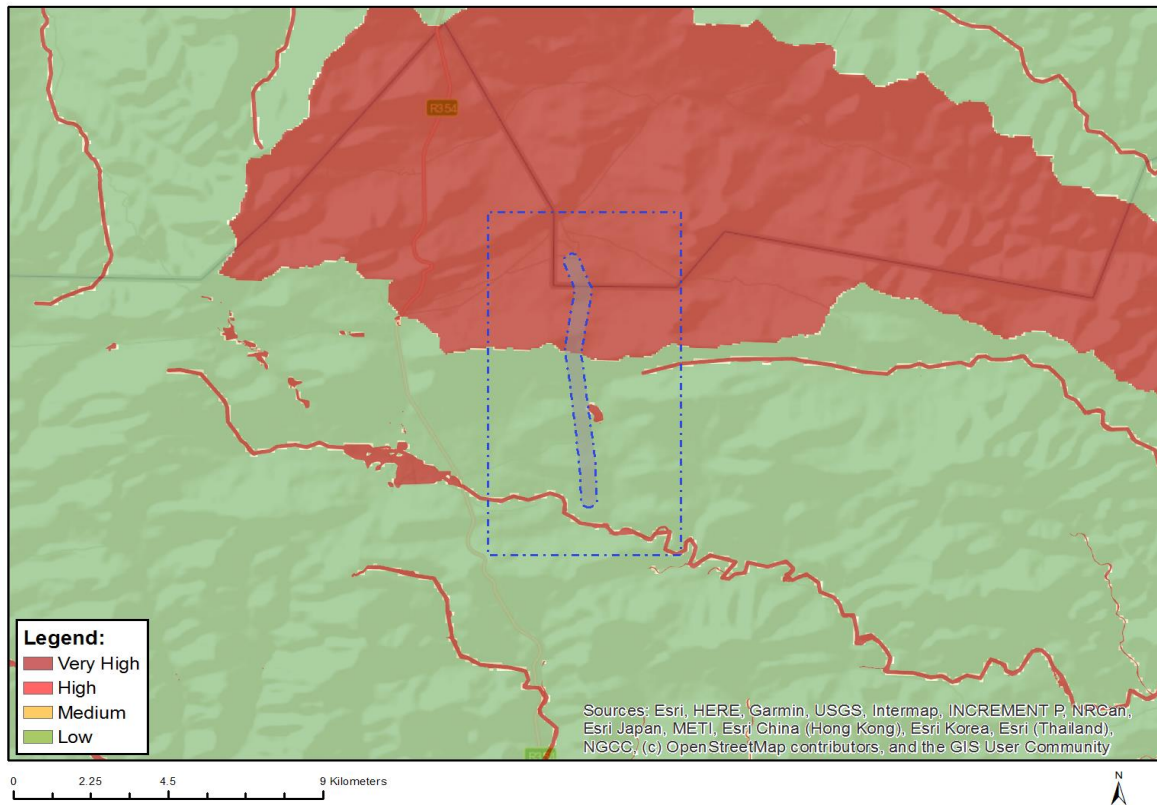
Where only a sensitive plant unique number or sensitive animal unique number is provided in the screening report and an assessment is required, the environmental assessment practitioner (EAP) or specialist is required to email SANBI at eiadatarequests@sanbi.org.za listing all sensitive species with their unique identifiers for which information is required. The name has been withheld as the species may be prone to illegal harvesting and must be protected. SANBI will release the actual species name after the details of the EAP or specialist have been documented.

Very High sensitivity	High sensitivity	Medium sensitivity	Low sensitivity
	X		

Sensitivity Features:

Sensitivity	Feature(s)
High	Aves-Neotis ludwigii
Medium	Aves-Aquila verreauxii
Medium	Mammalia-Bunolagus monticularis

MAP OF RELATIVE AQUATIC BIODIVERSITY THEME SENSITIVITY

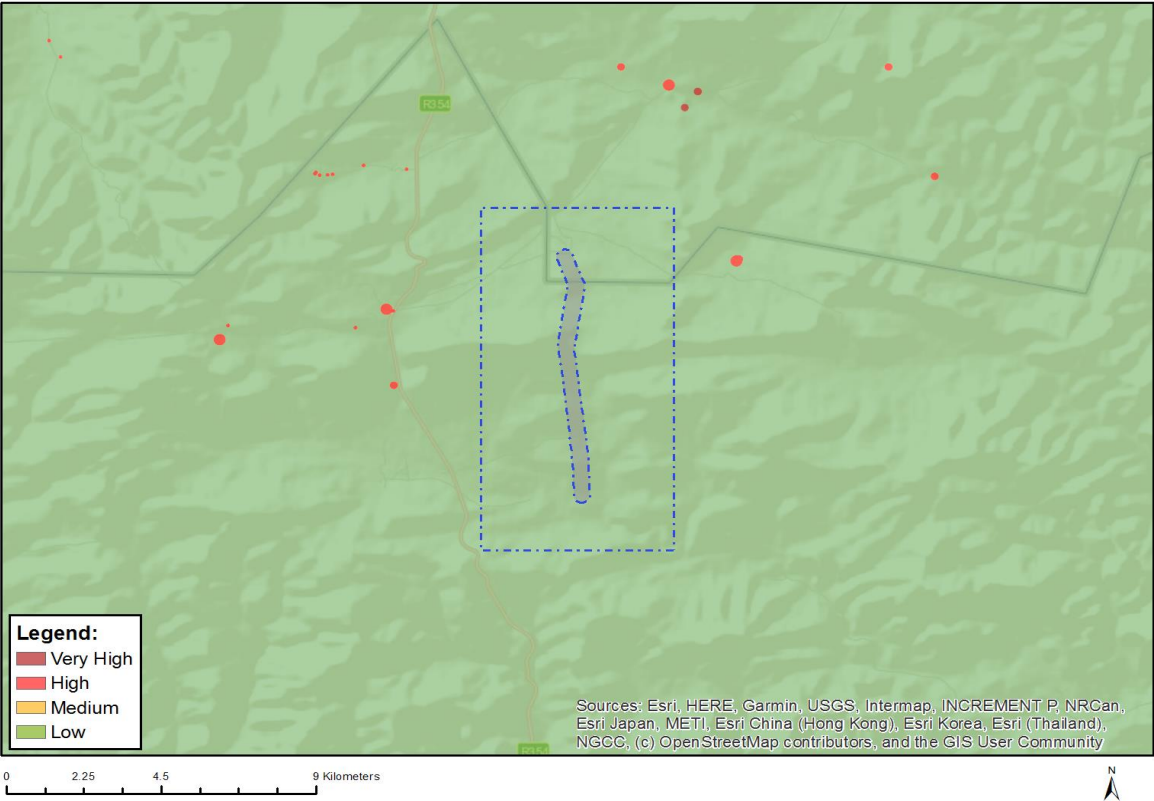


Very High sensitivity	High sensitivity	Medium sensitivity	Low sensitivity
X			

Sensitivity Features:

Sensitivity	Feature(s)
Low	Low sensitivity
Very High	Aquatic CBAs
Very High	Wetlands and Estuaries
Very High	Freshwater ecosystem priority area quinary catchments

MAP OF RELATIVE ARCHAEOLOGICAL AND CULTURAL HERITAGE THEME SENSITIVITY

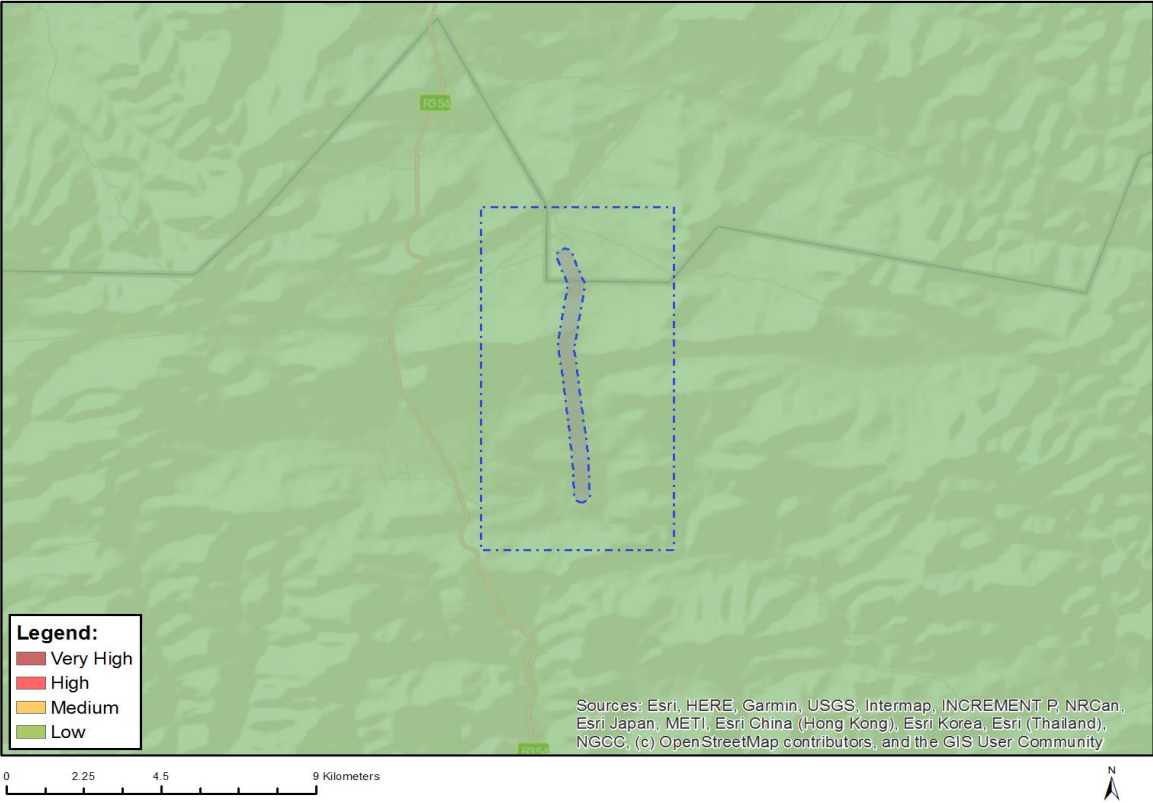


Very High sensitivity	High sensitivity	Medium sensitivity	Low sensitivity
			X

Sensitivity Features:

Sensitivity	Feature(s)
Low	Low sensitivity

MAP OF RELATIVE CIVIL AVIATION THEME SENSITIVITY

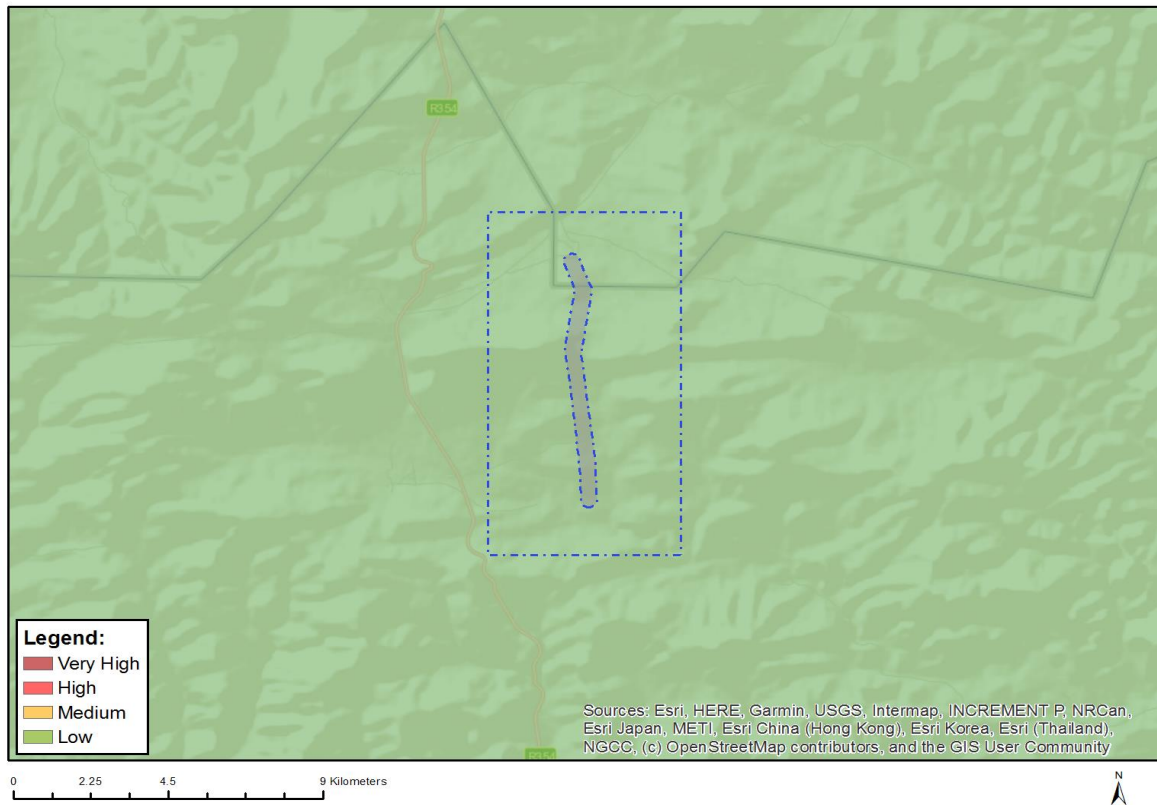


Very High sensitivity	High sensitivity	Medium sensitivity	Low sensitivity
			X

Sensitivity Features:

Sensitivity	Feature(s)
Low	Low sensitivity

MAP OF RELATIVE DEFENCE THEME SENSITIVITY

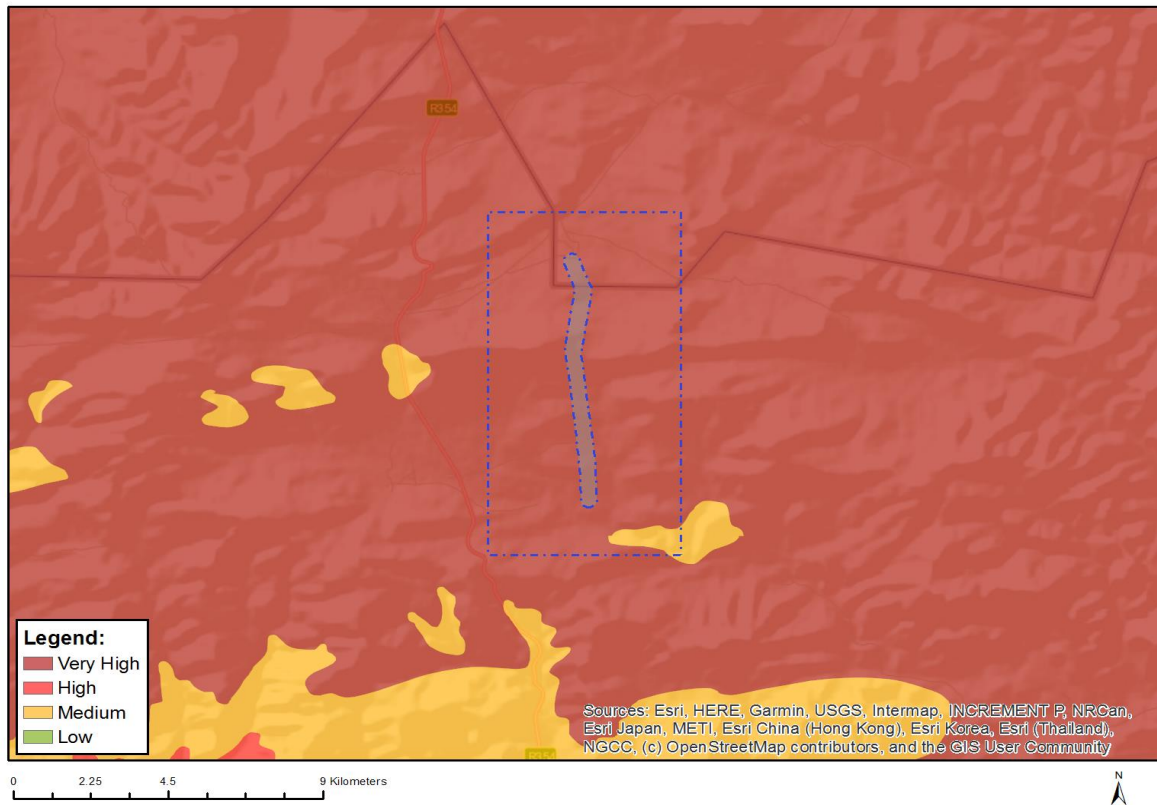


Very High sensitivity	High sensitivity	Medium sensitivity	Low sensitivity
			X

Sensitivity Features:

Sensitivity	Feature(s)
Low	Low Sensitivity

MAP OF RELATIVE PALEONTOLOGY THEME SENSITIVITY

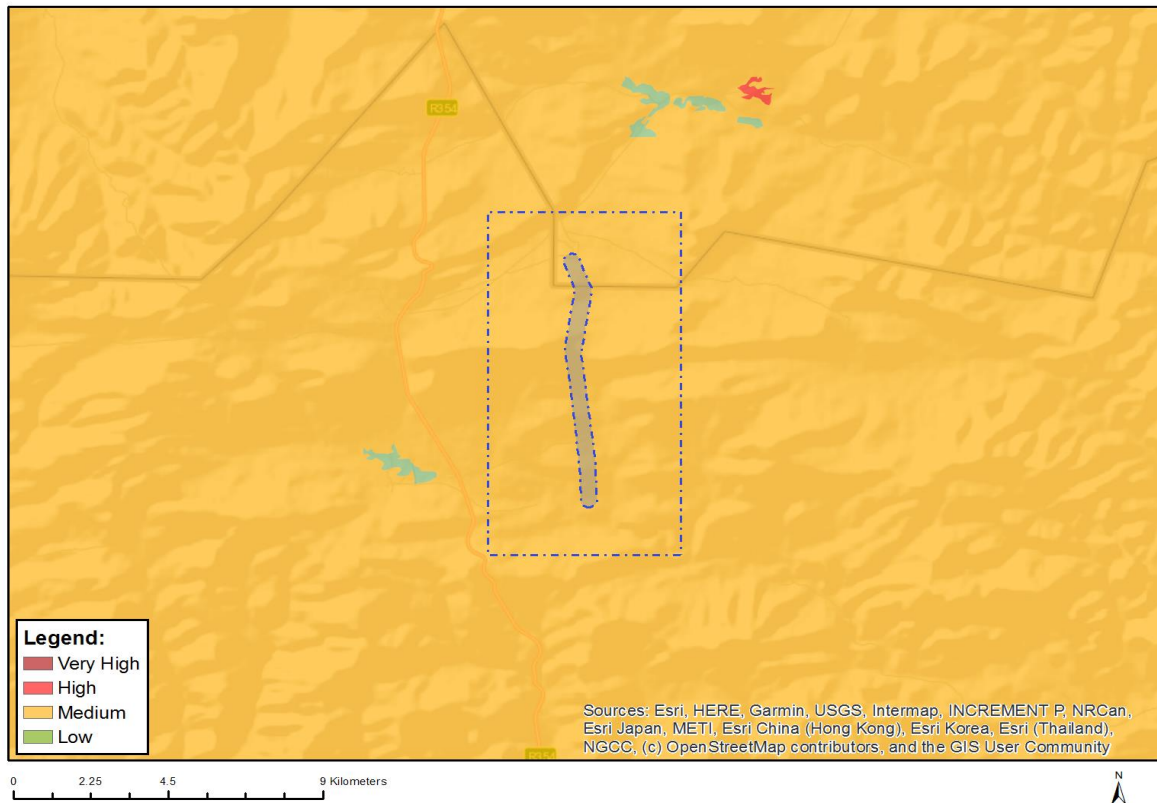


Very High sensitivity	High sensitivity	Medium sensitivity	Low sensitivity
X			

Sensitivity Features:

Sensitivity	Feature(s)
Very High	Features with a Very High paleontological sensitivity

MAP OF RELATIVE PLANT SPECIES THEME SENSITIVITY



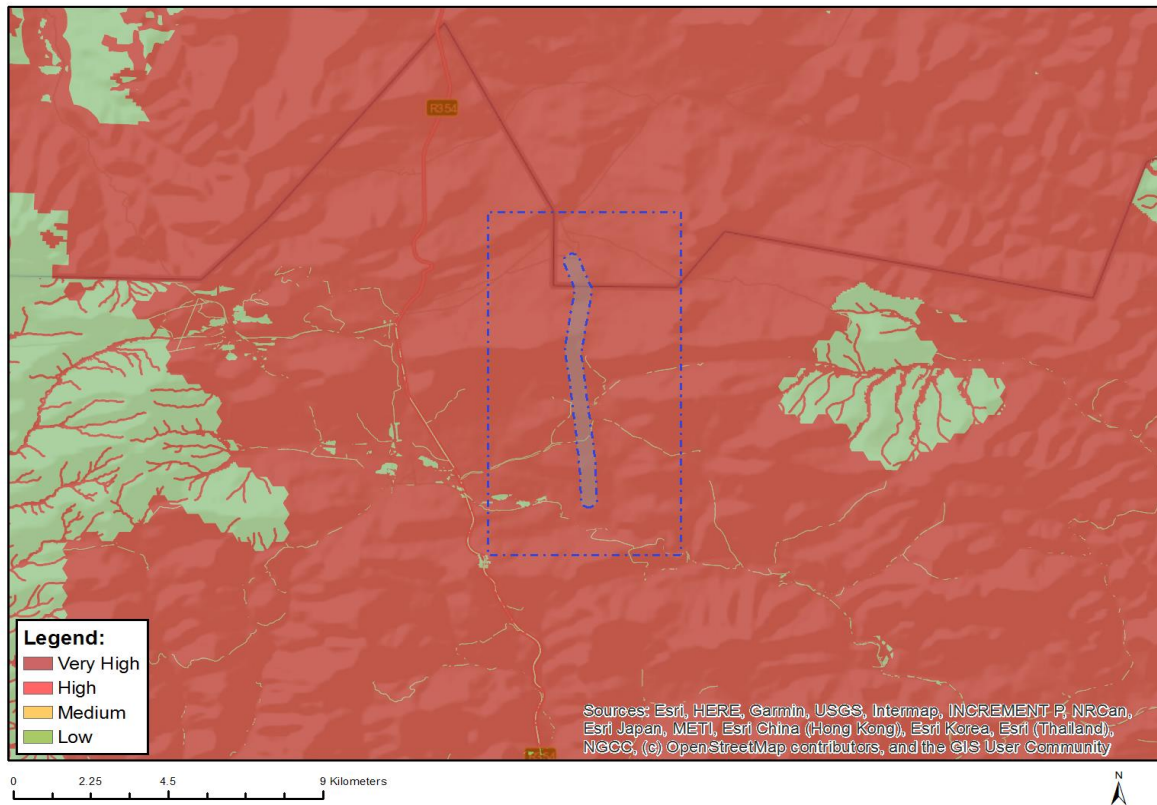
Where only a sensitive plant unique number or sensitive animal unique number is provided in the screening report and an assessment is required, the environmental assessment practitioner (EAP) or specialist is required to email SANBI at eiadatarequests@sanbi.org.za listing all sensitive species with their unique identifiers for which information is required. The name has been withheld as the species may be prone to illegal harvesting and must be protected. SANBI will release the actual species name after the details of the EAP or specialist have been documented.

Very High sensitivity	High sensitivity	Medium sensitivity	Low sensitivity
		X	

Sensitivity Features:

Sensitivity	Feature(s)
Medium	Sensitive species 1138
Medium	Sensitive species 1041
Medium	Lotononis venosa
Medium	Pauridia breviscapa
Medium	Sensitive species 346
Medium	Sensitive species 338
Medium	Sensitive species 711
Medium	Sensitive species 936
Medium	Adromischus phillipsiae
Medium	Asparagus mollis
Medium	Sensitive species 142
Medium	Sensitive species 886
Medium	Eriocephalus grandiflorus
Medium	Sensitive species 722

MAP OF RELATIVE TERRESTRIAL BIODIVERSITY THEME SENSITIVITY



Very High sensitivity	High sensitivity	Medium sensitivity	Low sensitivity
X			

Sensitivity Features:

Sensitivity	Feature(s)
Low	Low Sensitivity
Very High	Ecological Support Area 2
Very High	Ecological Support Area 1
Very High	Critical Biodiversity Area 1
Very High	Critical Biodiversity Area 2
Very High	Freshwater ecosystem priority area quinary catchments
Very High	Focus Areas for land-based protected areas expansion