

From: Samkelisiwe Dlamini [mailto:SDlamini@environment.gov.za]
Sent: Friday, 06 August 2021 03:48
To: Strong, Ashlea <Ashlea.Strong@wsp.com>
Cc: Masina Litsoane <MLitsoane@environment.gov.za>
Subject: 2021-07-0017 - BTE - Pre-Application Meeting Minutes and PP Plan

Dear Ashlea

THE PUBLIC PARTICIPATION PROCESS (PPP) PLANS FOR THE FOR THE BIOTHERM ESIZAYO AND MARALLA EAST AND WEST ENVIRONMENTAL CONSENT PROJECTS and received on the 22 05 August 2021 refers.

The Department has evaluated the Public Participation Plan submitted as per Minister Directive dated 05 June 2020 in response to Covid-19 pandemic and hereby approves the plan for the abovementioned project.

Please ensure that all correspondence to be sent to I&APs must clearly specify the dates when comments on the report should be submitted. Further, should there be a need to for a meetings from I&APs, the meeting can take place via virtual platforms such as Microsoft Teams.

You may proceed with the public participation process in accordance with the tasks contemplated in the PPP plan. Should you wish to deviate from the submitted PPP Plan, the amended PPP Plan must be submitted to the Department for approval prior commencement.

You are hereby reminded of Section 24F of the National Environmental Management Act 1998 (Act No. 107 of 1998), as amended, that no activity may commence prior to an Environmental Authorization being granted by the Department.

The minutes of the meeting are the true reflection of what was discussed in the meeting held on 28 July 2021

Do not hesitate to contact me if you need further clarity

Regards

Ms Samkelisiwe Dlamini
National Infrastructure Projects
Department of Forestry, Fisheries and the Environment
473 Steve Biko Road
Arcadia
Tel: 012 399 9379
Cell: 0727667508



MEETING NOTES

JOB TITLE	BioTherm_EsizayoMaralla_Pre-App Meeting
PROJECT NUMBER	41103480 and 41103481
DATE	28 July 2021
TIME	10h00
VENUE	Online (MS Teams)
SUBJECT	Pre-Application Meeting with DFFE
CLIENT	BTE Renewables
PRESENT	Samkelisiwe Dhlamini (DFFE) – SD Masina Litsoane (DFFE) – ML Winnie Tebogo Mabena (DFFE) – WTM Sandhisha Jay Narain (BTE Renewables) – SJN Maanda Maseli (BTE Renewables) – MM Tonderai Munthumbira (BTE Renewables) – TM Alicia Govender (BTE Renewables) – AG Libby Hirshon (BTE Renewables) – LH Ashlea Strong (WSP) – AS Lukanyo Kewana (WSP) – LK
APOLOGIES	None
DISTRIBUTION	As above See Appendix A

MATTERS ARISING

ACTION

MATTERS ARISING	ACTION
1.0 INTRODUCTIONS AND WELCOME	
<ul style="list-style-type: none">AS welcomed everyone followed by a round of introductions and an overview of the meeting agenda.A PowerPoint presentation was presented to all attendees to provide information and mapping. <p><i>* AS received consent from all parties present to record the meeting.</i> <i>** A copy of the PowerPoint presentation has been attached hereto for reference (Appendix B).</i></p>	-
2.0 PROJECT BACKGROUND	
2.1 Project Background and Description <ul style="list-style-type: none">AS provided a brief overview of the Project, identifying Esizayo and Maralla Wind Energy Facilities as the applicants with both projects ran by BTE Renewables and noted	

The Pavilion, 1st Floor
Cnr Portwood and Beach Road, Waterfront
Cape Town, 8001
South Africa

T: +27 21 481 8700
F: +086 606 7121
www.wsp.com

MATTERS ARISING

ACTION

<p>that BTE Renewables proposes to include both the Esizayo and Maralla Wind Energy Facilities as part of their submissions for the Round 5 REIPPPP Bidding, and that as part of this process they are required to provide evidence that the required Environmental Consents for these projects are underway.</p> <ul style="list-style-type: none"> – AS noted that the Environmental Consents include the following: <ul style="list-style-type: none"> ▪ A number of Part 1 Amendments to update administrative items in the existing EAs such as amending the name of the applicant. ▪ Updating and approval of the EMPs for the Maralla East, Maralla West and Esizayo WEFs as required by the existing EAs ▪ Updating the EMPs for the approved Esizayo and Maralla transmission Integration Powerlines as required by the existing EAs ▪ Undertaking two new Basic Assessment Processes for two new Transmission integration powerlines, one for Esizayo and one for Maralla. – The location of all these Projects is in the Western and Northern Cape, essentially between the Karoo Hoogland and the Laignsburg Local Municipalities – The Projects traverses 10 farm portions – Key consideration noted include the WEFs and Powerlines traversing CBAs, ESAs, NPAES, the Komsberg Renewable Energy Development Zone and that the WEFs and Powerlines falls within the Central Strategic Transmission Corridor (STC). <p>2.2 Assessment Process and Competent Authority</p> <ul style="list-style-type: none"> – AS ran through the applicable Listed Activities of the EIA Regulations (2014, as amended), noting a Basic Assessment (BA) process is required for the application for Environmental Authorisation for two 132kV powerlines. – AS indicated that DFFE had been identified as the Competent Authority (CA). – ML confirmed that DFFE is the CA. <p>2.3 Specialist Assessments</p> <ul style="list-style-type: none"> – AS ran through the identified sensitivities as per the DEA Online Screening Tool report, and specialist assessments noted therein. – AS identified the specialist assessments that are to be undertaken as part of the BA process, as well as the studies that are not being undertaken as part of the assessment and supporting reasons for their exclusion. <p>2.4 Public Participation Process</p> <ul style="list-style-type: none"> – AS provided an overview of the proposed public participation process in accordance with the EIA Regulations (2014, as amended). – AS noted that the same Public Participation Plan (PPP) will be followed for both the new Basic Assessment, EMPR and Layout updates. – AS noted that a draft Public Participation Plan (PPP) will be issued to DFFE along with the meeting minutes for consideration and approval. <p>2.5 Timeframes</p> <ul style="list-style-type: none"> – AS noted the application process will follow the legislated BA timelines; however, as the 132kV OHPL is located within the Central Strategic Transmission Corridor and the Komsberg REDZ (it would benefit from the shortened decision-making timeframes (57 days instead of 90 days) outlined in GN 113 and GN 114. – The authority’s decision-making timeframe will be 30 days for the Part 1 Amendments and Updated EMPr and Final layouts 	
<p>3.0 QUESTIONS AND COMMENTS</p>	
<p>AS opened the floor for any comments or questions. The following items were raised and discussed.</p> <p>3.1 Part 1 Amendment</p> <ul style="list-style-type: none"> – AS queried whether a turbine output change for the Esizayo project could constitutes a Part 1 amendment? – SD queried whether if it’s only the technology used on these turbines that will be changed? – AS noted that just the technology will change and asked for confirmation of the current authorisation from the BTE team. 	

MATTERS ARISING

ACTION

- TM stated that the current authorisation says that it's a turbine of 4 Megawatts in size but BTE proposes to change the size of the generator to a larger size of about 6 Megawatts.
- AS noted that it's just the generation capacity of each turbine that will be increased, the specifications of the Turbine structures themselves will remain the same as authorised.
- SD noted that it does and further opened the floor to ML for her inputs.
- ML queried how much of the input will increase the overall wind energy facility, for instance if you are increasing it from 4 to 6 per turbine, then how much output increase?
- TM replied that this will not increase the output, the output will remain the same (140 Megawatts) the change actually means that less turbine positions will be used.
- ML queried that will this decrease the number of turbines.
- AS responded that, that is correct.
- ML further queried that the decrease of turbines will not alter the layout
- AS replied that, that will be shown in the final layouts that need to be submitted together with the amended EMPRs
- ML interjected if increasing the turbine generating capacity does not change the overall output generated (i.e. 140MW) then that means this is potentially a part 1 amendment but if this will shift the layouts, it might be a part 2.
- AS noted that at this stage they are only reducing the number of turbines.
- AS noted that in terms of condition 15 and 17 of the WEFs, The EAs issued for the Maralla and Esizayo WEFs indicate that the EMPrs and layouts submitted as part of the original EIA processes were not approved and must be amended to include measures as dictated by the final site lay-out map and micro-siting and the provisions of the EAs.
- AS then queried whether shifting Turbine positions would constitute a Part 2 amendment, noting that the current layouts have not been approved and need to be updated and amended and the final submitted with the amended EMPr in terms of the conditions of the EA?
- ML noted that if the layouts were never approved then it cannot be a Part 2 Amendment.
- SD queried if the applications will be done separately or all at once.
- AS replied that the applications need to be done separately and that the Part 1 amendment will be the first in line to be sent through and that the EMPr still require specialist inputs such as walk-downs and micro-siting and the majority of these specialist will have to wait for the Spring season because of the ecology and the birds, so the EMPr updates drafts will be sent towards the end of November and the final in December.
- AS queried that for this EMPr update, should a letter be sent to DFFE to say that we are going to be updating the EMPrs and the layouts, so that we can comply with condition 15 and 17 of the EA or does it constitute a Reg 37 process
- SD asked for clarity on AS query
- AS replied that if it's a Reg 37 process, post April 2021 there is now a Reg 37 application form on the website, so if it is a Reg 34 process, do we then need to submit that form
- ML replied that she does not think that the Reg 37 process needs to be followed when submitting the EMPr updates because they have never been approved in the first place and also the project has not commenced yet with the Audit point in the Reg. SD and I will need to run the understanding with our colleagues.
- ML queried that this Pre-Application is for EA amendments, EMPRs and Layout approvals and grid connection applications, so for grid connections its going to be new applications and how many of them?
- AS confirmed that two applications will be submitted for grid connections, one for Esizayo and one for Maralla.

3.2 **Minutes and PPP**

- AS noted that the PPP and pre-application meeting minutes will be sent together and further queried if the DFFE would prefer a separate PPP for the BA processes and one for the EMPRs or a combined one.
- SD confirmed that this can be combined.

3.3 **Summary of Decisions:**

- The change in turbine generating capacity will be a part 1 amendment
- The EMPr amendments will not follow a Regulation 37 process as the EMPrs and layout are not approved.
- A letter must be issued to the DFFE prior to the submission of the EMPr amendments

MEETING NOTES

MATTERS ARISING

ACTION

4.0 WAY FORWARD

- WSP to formalise meeting minutes and distribute, along with PPP, for approval.

AS closed the meeting at 10h46.

NEXT MEETING

No additional meetings have been scheduled.

MEETING NOTES

APPENDIX A: ATTENDANCE REGISTER

Maralla and Esizayo Environmental Consents - DFFE Pre-Application Meeting Chat Files Meeting Notes +

Strong, Ashlea joined the meeting.

Tuesday, 27 July 2021

Kewana, Lukanyo was invited to the meeting.

Strong, Ashlea named the meeting to Maralla and Esizayo Environmental Consents - DFFE Pre-Application Meeting.

Wednesday, 28 July 2021

Meeting ended 5m 54s 07/28 09:57


Attendance report
Click here to download attendance report

Meeting started 07/28 09:58

- Sandhisha Jay Narain (External) has temporarily joined the chat.
- Winnie Tebogo Mabena (Guest) has temporarily joined the chat.
- Libby Hirshon (Guest) has temporarily joined the chat.
- Alicia Govender (Guest) has temporarily joined the chat.
- Tonderai Munthumbira (Guest) has temporarily joined the chat.
- Samkelisiwe Dlamini (Guest) has temporarily joined the chat.
- Maanda Maseli (External) has temporarily joined the chat.
- Masina Litsoane (Guest) has temporarily joined the chat.

MEETING NOTES

APPENDIX B: PRESENTATION



DFFE Pre-Application Meeting
Esizayo and Maralla Environmental Consents, Northern and Western Cape

28 July 2021

Agenda

1. Introductions
2. Overview of the Project
 - Background
 - Location
 - Technical Description
3. Overview and Confirmation of Permitting Processes
 - Part 1 Amendments
 - EMPr Updates and Final Layouts
 - Basic Assessments
 - Listed Activities
 - Specialist Assessments as identified by DEA Screening Tool
 - Specialist Studies commissioned
 - Competent Authority
4. Public Participation Process
5. Timeframes
6. Questions and Discussions
7. Way Forward

wsp

2

1. Introductions

- BTE Renewables:
 - Sandhisha Jay Narain
 - Maanda Maseli
 - Tonderai Munthumbira
 - Werner Engelbrecht
 - Libby Hirshon
 - Alicia Govender
- WSP Group Africa (Pty) Ltd:
 - Lukanyo Kewana (Environmental Consultant)
 - Ashlea Strong (Project Manager)
- Department of Forestry, Fisheries and Environment (DFFE):
 - Samkelisiwe Dlamini
 - Masina Litsoane
 - Winnie Tebogo Mabena



3

2. Overview of the Project

Background

- BTE Renewables (Applicants: Relevant Project Companies)
- BTE Renewables propose to include both the Esizayo and Maralla Wind Energy Facilities as part of their submissions for the Round 5 REIPPPP Bidding. As part of this process they are required to provide evidence that the required Environmental Consents for these projects are underway. These include:
 - A number of Part 1 Amendments to update administrative items in the existing EAs;
 - Updating and approval of the EMPs for the Maralla East, Maralla West and Esizayo WEFs as required by the existing EAs
 - Updating the EMPs for the approved Esizayo and Maralla transmission Integration Powerlines as required by the existing EAs
 - Undertaking two new Basic Assessment Processes for two new Transmission integration powerlines, one for Esizayo and one for Maralla.



4

2. Overview of the Project

Existing Environmental Authorisations

- Maralla East WEF:
 - 14/12/16/3/3/2/962 – 14 July 2017
 - 14/12/16/3/3/2/962/AM1 – 18 December 2019
- Maralla West WEF:
 - 14/12/16/3/3/2/962 – 14 July 2017
 - 14/12/16/3/3/2/962/AM1 – 25 August 2017
 - 14/12/16/3/3/2/962/AM2 – 18 December 2019
- Maralla Power Integration:
 - 14/12/16/3/3/1/1774 – 14 November 2017
 - 14/12/16/3/3/1/1774/AM1 – 13 December 2017
- Esizayo WEF:
 - 14/12/16/3/3/2/967 – 14 July 2017
- Esizayo Power Integration:
 - 14/12/16/3/3/1/1775 – 01 December 2017
 - 14/12/16/3/3/1/1775/AM1 – 26 January 2018



5

2. Overview of the Project

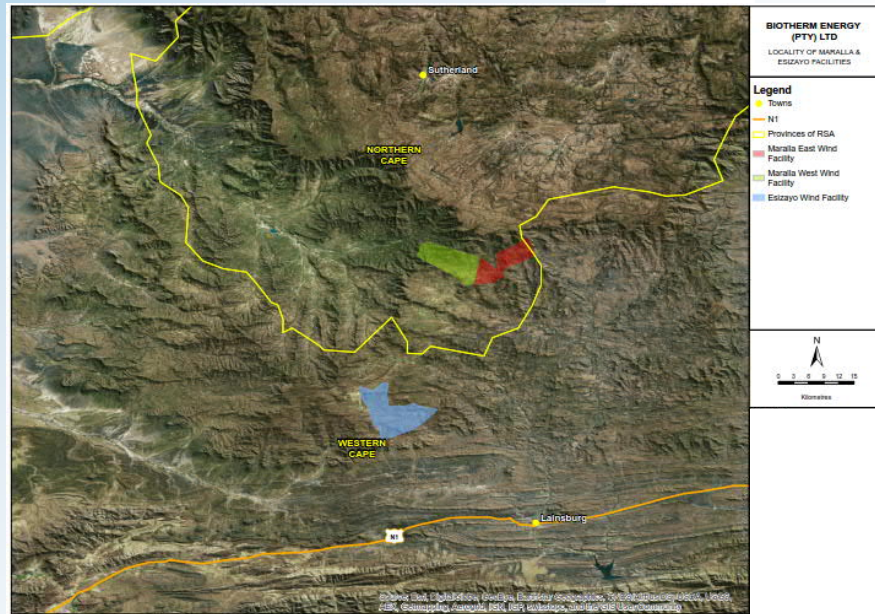
Location

	Maralla East WEF	Maralla West WEF	Esizayo WEF
Province:	Western and Northern Cape	Northern Cape	Western Cape
Local Municipality:	Karoo Hoogland and Laingsburg	Karoo Hoogland	Laingsburg
Farms:	<ul style="list-style-type: none"> • Farm Welgemoed 268 (the Remainder); • Farm Schalkwykskraal 204 (the Remainder); and • Farm Drie Roode Heuvels 180 (the Remainder). 	<ul style="list-style-type: none"> • Portion of Farm Drie Roode Heuvels 180 Remainder • Farm Annex Drie Roode Heuvels 181 Remainder • Farm Wolven Hoek 182 Portion 1 • Farm Wolven Hoek 182 Portion 2 	<ul style="list-style-type: none"> • Farm Aanstoot 72 Portion 1 • Farm Annex Joseph's Kraal 84 • Farm Aurora 285.



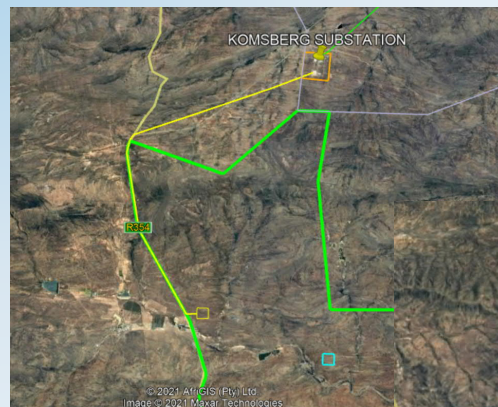
6

2. Overview of the Project

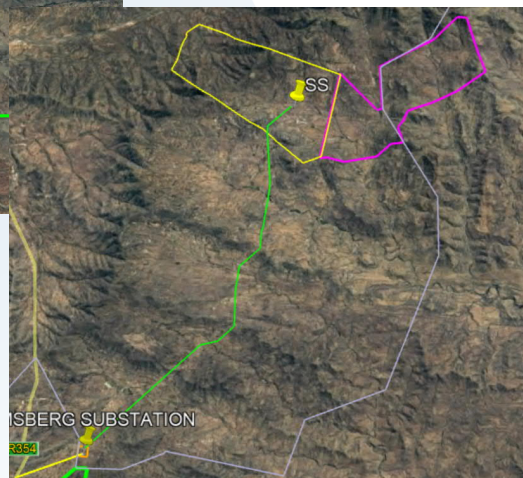


7

2. Overview of the Project



Esizayo 132kV Powerline



Maralla 132kV Powerline

8

2. Overview of the Project

Key Considerations

- The WEFs and Powerlines fall within Critical Biodiversity Areas (CBA) and Ecological Support Areas (ESA) in both the Northern and Western Cape Provinces
- The WEFs and Powerlines fall within National Protected Area Expansion Strategy (NPAES) focus areas in both the Northern and Western Cape Provinces
- Falls within the Central Strategic Transmission Corridor
- Falls within the Komsberg Renewable Energy Development Zone



9

3. Permitting Processes

Part 1 Amendment Process

- The Amendment Process prescribed in GNR 326 promulgated in terms of section 24(5) and 44 of the National Environmental Management Act (No. 107 of 1998) (NEMA) will be undertaken.
- EIA Regulations (GNR 326) (April 2014) makes provision for Amendments where no change of scope to the EA occurs or a change of ownership occurs (Part 1 Amendments) or for Amendments where a change in scope occurs (Part 2 Amendments).
- The client proposes to only amend the client contact details of the EA.
- It is understood that a Part 1 Amendment Processes will be required.
- Query:
 - The Applicant would like to consider a turbine output change. This will not change the size of the turbines themselves – could this constitute a Part 1 amendment?



10

3. Permitting Processes



EMPr Update and Final Layout Processes

- The EAs issued for the Maralla WEFs and the powerline indicate that the EMPrs and layouts submitted as part of the original EIA process were not approved and must be amended to include measures as dictated by the final site lay-out map and micro-siting and the provisions of the EAs
 - Condition 15 – WEFs
- The EMPrs must be made available for comments by registered Interested and Affected Parties (I&APs) and the holder of EAs must consider such comments
 - Condition 17 - WEFs.
- Once amended, the final EMPrs must be submitted to the Department of Forestry, Fisheries and Environment (DFFE) for written approval prior to commencement of the activity.
- Queries:
 - DFFE to confirm if the amended EMPrs can just be submitted for approval – or whether a Regulation 37 process is required.
 - DFFE to confirm if the final layout can be submitted as part of the EMPr approval process.

11

3. Permitting Processes

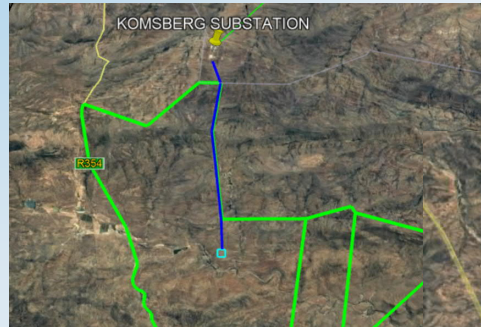


Basic Assessment Processes for 132kV Powerlines

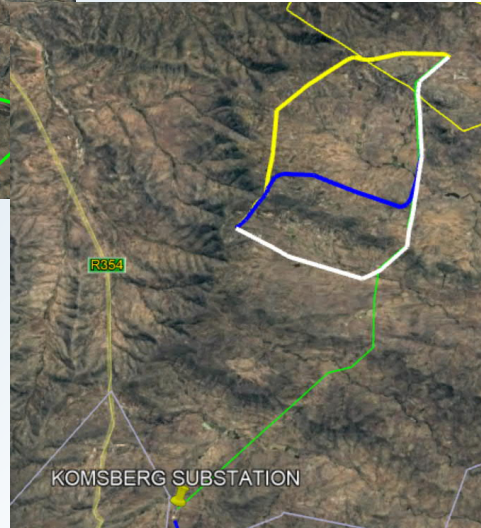
- The Applicant is looking to investigate two alternative 132kV power integration options for the Maralla and Esizayo WEFs.
- Overhead Powerlines
 - 132kV steel single or double structure with kingbird conductor
 - A 100m corridor around the powerline will be assessed
 - Pole positions will only be available post preferred bidder award (i.e. once the powerline design has started)
- Construction Methodology
 - Standard overhead line construction methodology will be employed-
 - Drill holes or excavate (depending on ground conditions), plant poles, string conductor
 - Not envisaged that any large excavations and stabilized backfill will be required

12

3. Permitting Processes



New Esizayo 132kV Powerline



New Maralla 132kV Powerline to Karusa Substation

3. Permitting Processes



Listed Activities

- [Listing Notice 1 - GNR 327](#)

LISTED ACTIVITY	DESCRIPTION OF PROJECT ACTIVITY
<p>Activity 11: The development of facilities or infrastructure for the transmission and distribution of electricity—</p> <p>(i) outside urban areas or industrial complexes with a capacity of more than 33 but less than 275 kilovolts; or</p> <p>(ii) inside urban areas or industrial complexes with a capacity of 275 kilovolts or more; excluding the development of bypass infrastructure for the transmission and distribution of electricity where such bypass infrastructure is —</p> <p>(a) temporarily required to allow for maintenance of existing infrastructure;</p> <p>(b) 2 kilometres or shorter in length;</p> <p>(c) within an existing transmission line servitude; and</p> <p>(d) will be removed within 18 months of the commencement of development.</p>	<p>The 132 kV transmission lines will connect the Esizayo WEF and Maralla WEFs to the national grid. The WEFs and the transmission lines are outside of the urban edge. This activity is therefore triggered by the proposed construction of the transmission infrastructure. .</p>
<p>Activity 12 (ii), (a) and (c): The development of—</p> <p>(ii) infrastructure or structures with a physical footprint of 100 square metres or more; where such development occurs—</p> <p>(a) within a watercourse; or</p> <p>(c) if no development setback exists, within 32 metres of a watercourse, measured from the edge of a watercourse</p>	<p>The powerlines will require the erection of tower structures, which may require a construction area of approximately 100m2. There is the potential that a tower structure or access road will transverse a watercourse (or drainage line) which will require excavation of removal of soil or sand from the watercourse. This activity will potentially be triggered by the proposed construction of the transmission infrastructure.</p>
<p>Activity 19 The infilling or depositing of any material of more than 10 cubic metres into, or the dredging, excavation, removal or moving of soil, sand, shells, shell grit, pebbles or rock of more than 10 cubic metres from a watercourse</p>	<p>The powerlines will require the erection of tower structures and access roads. There is the potential that a tower structure or access road will transverse a watercourse (or drainage line) which will require excavation of removal of soil or sand from the watercourse. This activity will potentially be triggered by the proposed construction of the transmission infrastructure.</p>

3. Permitting Processes



Listed Activities

- Listing Notice 1 - GNR 327

LISTED ACTIVITY	DESCRIPTION OF PROJECT ACTIVITY
Activity 27: The clearance of an area of 1 hectare or more, but less than 20 hectares of indigenous vegetation except where such clearance of indigenous vegetation is required for- (i) the undertaking of a linear activity; or maintenance purposes undertaken in accordance with a maintenance management plan.	The powerlines are considered a linear activity and therefore this activity is not triggered by the proposed construction of the transmission lines. However, the construction of the common 132 kV on-site substation will require the clearance of indigenous vegetation of more than 1ha but less than 20 ha.
Activity 30: Any process or activity identified in terms of section 53(1) of the National Environmental Management: Biodiversity Act, 2004 (Act No. 10 of 2004).	The transmission line routes traverse Critical Biodiversity Areas and fall within National Protected Areas Expansion Strategy Focus Areas. This activity is therefore triggered by the proposed construction of the transmission infrastructure.

3. Permitting Processes

A Basic Assessment Process is therefore proposed for the Project



Listed Activities (Cont.)

- Listing Notice 3 - GNR 324

LISTED ACTIVITY	DESCRIPTION OF PROJECT ACTIVITY
Activity 4: The development of a road wider than 4 metres with a reserve less than 13,5 metres. (i) Western Cape- (ii) areas outside urban areas (aa) containing indigenous vegetation	The transmission line routes traverse Critical Biodiversity Areas and fall within National Protected Areas Expansion Strategy Focus Areas. However, the transmission line may require an access road (of approximately 4 m in width) although it will likely be a two-track road. This activity is potentially triggered by the proposed construction of the transmission infrastructure.
Activity 12 (i) (i) and (ii): The clearance of an area of 300 square metres or more of indigenous vegetation. Except where such clearance of indigenous vegetation is required for maintenance purposes undertaken in accordance with a maintenance management plan. Northern Cape i. Within any critically endangered or endangered ecosystem listed in terms of section 52 of the NEMBA or prior to the publication of such a list, within an area that has been identified as critically endangered in the National Spatial Biodiversity Assessment 2004; ii. Within critical biodiversity areas identified in bioregional plans.	The transmission line routes traverse Critical Biodiversity Areas and fall within National Protected Areas Expansion Strategy Focus Areas. The construction of the common 132 kV on-site substation will require the clearance of more than 300 m2 of indigenous vegetation. This activity is therefore triggered by the proposed construction of the transmission infrastructure.
Activity 14 (ii) (a) and (c) (i) (i) (bb) and (ff): The development of— (ii) infrastructure or structures with a physical footprint of 10 square metres or more; where such development occurs— (a) within a watercourse; or (c) if no development setback has been adopted, within 32 metres of a watercourse, measured from the edge of a watercourse.; Northern Cape i. Outside urban areas: (bb) National Protected Area Expansion Strategy Focus areas; (ff) Critical biodiversity areas or ecosystem service areas as identified in systematic biodiversity plans adopted by the competent authority or in bioregional plans.	The transmission line routes traverse Critical Biodiversity Areas and fall within National Protected Areas Expansion Strategy Focus Areas. The powerlines will require the erection of tower structures, which may require a construction area of approximately 100m2. There is the potential that a tower structure or access road will transverse a watercourse (or drainage line). This activity is therefore triggered by the proposed construction of the transmission infrastructure

3. Permitting Processes



DEA Screening Tool Identified Sensitivities

	Very High Sensitivity	High Sensitivity	Medium Sensitivity	Low Sensitivity
Agriculture Theme	MTx			ETx
Animal Species Theme		MTx ETx		
Aquatic Biodiversity Theme	MTx ETx			
Archaeological and Cultural Heritage Theme		MTx		ETx
Civil Aviation Theme			MTx	ETx
Defence Theme				MTx ETx
Palaeontology Theme	MTx ETx			
Plant Species Theme			MTx ETx	
Terrestrial Biodiversity Theme	MTx ETx			

3. Permitting Processes



DEA Screening Tool Specialist Assessments

- Agricultural
- Landscape/Visual
- Archaeological & Cultural Heritage
- Palaeontology
- Terrestrial Biodiversity
- Aquatic Biodiversity
- Avian
- Civil Aviation
- Radio Frequency Interference (RFI)
- Geotechnical
- Plant Species
- Animal Species

No	Specialist assessment	Assessment Protocol
1	Agricultural Impact Assessment	https://screening.environment.gov.za/ScreeningDownloads/AssessmentProtocols/Gazetted_General_Agriculture_Assessment_Protocols.pdf
2	Landscape/Visual Impact Assessment	https://screening.environment.gov.za/ScreeningDownloads/AssessmentProtocols/Gazetted_General_Requirement_Assessment_Protocols.pdf
3	Archaeological and Cultural Heritage Impact Assessment	https://screening.environment.gov.za/ScreeningDownloads/AssessmentProtocols/Gazetted_General_Requirement_Assessment_Protocols.pdf
4	Palaeontology Impact Assessment	https://screening.environment.gov.za/ScreeningDownloads/AssessmentProtocols/Gazetted_General_Requirement_Assessment_Protocols.pdf
5	Terrestrial Biodiversity Impact Assessment	https://screening.environment.gov.za/ScreeningDownloads/AssessmentProtocols/Gazetted_Terrestrial_Biodiversity_Assessment_Protocols.pdf
6	Aquatic Biodiversity Impact Assessment	https://screening.environment.gov.za/ScreeningDownloads/AssessmentProtocols/Gazetted_Aquatic_Biodiversity_Assessment_Protocols.pdf
7	Avian Impact Assessment	https://screening.environment.gov.za/ScreeningDownloads/AssessmentProtocols/Gazetted_Avifauna_Assessment_Protocols.pdf
8	Civil Aviation Assessment	https://screening.environment.gov.za/ScreeningDownloads/AssessmentProtocols/Gazetted_Civil_Aviation_Installations_Assessment_Protocols.pdf
9	RFI Assessment	https://screening.environment.gov.za/ScreeningDownloads/AssessmentProtocols/Gazetted_General_Requirement_Assessment_Protocols.pdf
10	Geotechnical Assessment	https://screening.environment.gov.za/ScreeningDownloads/AssessmentProtocols/Gazetted_General_Requirement_Assessment_Protocols.pdf
11	Plant Species Assessment	https://screening.environment.gov.za/ScreeningDownloads/AssessmentProtocols/Gazetted_Plant_Species_Assessment_Protocols.pdf
12	Animal Species Assessment	https://screening.environment.gov.za/ScreeningDownloads/AssessmentProtocols/Gazetted_Animal_Species_Assessment_Protocols.pdf

3. Permitting Processes



Specialist Studies Commissioned

SPECIALIST ASSESSMENT	COMMENT
Soils and Agricultural Potential Assessment	A soils and agricultural survey will be undertaken.
Archaeological and Cultural heritage Desktop Assessment	The powerline could potentially negatively impact on heritage and archaeological resources. An Archaeological and Heritage Impact Assessment will be undertaken.
Palaeontology	The powerline could potentially negatively impact on Palaeontological resources. A Palaeontological Impact Assessment will be undertaken.
Visual Impact Assessment	The powerline could potentially negatively impact sensitive visual receptors. A Visual Impact Assessment will therefore be undertaken.
Terrestrial Biodiversity Impact Assessment	A large portion of the route falls within a CBA and NPAES focus areas. A Terrestrial Biodiversity Assessment has therefore been included in the BA process.
Freshwater Impact Assessment	The proposed route falls within an FEPA and a wetland occurs within the Project area. A Freshwater Impact Assessment will therefore be undertaken.
Avifauna Impact Assessment	Due to the potential impacts on birds as a result of the Overhead Powerline, an Avifauna Assessment will be undertaken as part of the BA Process.
Social Impact Assessment	A detailed social assessment will be prepared. The social statement will be based on a desktop review and telephonic interviews with key stakeholders.

19

3. Permitting Processes



Specialist Studies NOT Commissioned

SPECIALIST ASSESSMENT	COMMENT
Geotechnical	A Geotechnical Assessment will not be undertaken as part of the BA Process as this will be undertaken during the design phase, once preferred bidder status is obtained.
RFI	A Radio Frequency Interference (RFI) Study will not be undertaken. During the previous EIA and BA processes the SKA-SA confirmed that Esizayo WEF is located within the Western Cape, and will have no impact on the SKA. Both Maralla projects are located a significant distance from the SKA and so will have a very low impact risk of impact SKA-SA will be engaged with as part of the Public Participation Process.
Civil Aviation	The Civil Aviation Authority will be included on the project stakeholder database. They will be informed of the proposed Project, and comment will be sought. An Application for the Approval of Obstacles will also be submitted to SACAA once preferred bidder status is obtained.

20

3. Permitting Processes

Competent Authority

- Section 24C(2)(a) of NEMA
 - The Minister must be identified as the CA if the activity has implications for international environmental commitments or relations
- GN 779 of 01 July 2016
 - Identifies the Minister as the CA for the consideration and processing of environmental authorisations and amendments thereto for activities related the Integrated Resource Plan (IRP) 2010 – 2030
- DFFE is therefore deemed to be the Competent Authority



21

4. Public Participation Process

Public Participation Plan

- Site notices:
 - English and Afrikaans
- Compilation and management of I&AP Database
- Written notification:
 - Owners and occupiers on or adjacent to the proposed project site
 - Municipality Ward Councillor
 - District Municipality
 - Relevant State Departments
- Advertisement (One English and one Afrikaans in local newspaper)
- Draft Report Review for 30 days
 - WSP on request
 - Online on the WSP website
 - WSP will confirm with local Public Libraries as to whether they are open and able to accept documents for public review
- No provision has been made for public or focus group meetings due to current COVID-19 restrictions.



22

5. Timeframes

- Basic Assessments
 - Falls within Central Strategic Transmission Corridor (GN 113)
 - Falls within the Komsberg REDZ (GN 114)
 - Authority decision making timeframe is 57 days
- Part 1 Amendment
 - It is understood that the authority's decision making timeframe will be 30days
- Updated EMPr and Final layout
 - It is understood that the authority's decision making timeframe will be 30days



23

6. Questions and Discussion



24

7. Way forward

wsp





PUBLIC PARTICIPATION PLAN FOR THE BIOTHERM ESIZAYO AND MARALLA EAST AND WEST ENVIRONMENTAL CONSENT PROJECTS

DFFE REF NUMBER: 2021-07-0017

The restrictions enforced in terms of Government Gazette 43096 which placed the country in a national state of disaster limiting the movement of people to curb the spread of the COVID-19 Virus has placed some limitations on the commencement and continuation of the public consultation as part of an EIA process. Considering these limitations, the following consultation process has been designed and will be implemented, on approval by the Department of Forestry, Fisheries and the Environment (DFFE), to cater for the facilitation of the public participation process (PPP). The PPP includes Interested and Affected Parties (I&APs), the competent authority, directly impacted landowners/occupiers, adjacent landowners/occupiers, relevant Organs of State departments, Municipalities, ward councillors and other key stakeholders and all other parties that may have interest on this project.

The Public Participation Plan (PPP) is submitted as per the requirements of the General Provisions of Annexure 2 of the Regulations issued in terms of Section 27(2) of the Disaster Management Act, 2002 (Act No.57 of 2002) and published on 05 June 2020 in Government Notice No R560 of Government Gazette No 43412.

This plan has been developed for the amendment of the Environmental Management Programmes (EMPrs) and layout plans as required by the environmental authorisations issued on 14 July 2017 (Maralla East and West WEFs and Esizayo WEF), as well as two new Basic Assessment Applications required for two 132kV powerlines

According to Section (2)(4)(f) of the National Environmental Management Act (NEMA), the participation of all Interested and Affected parties (I&APs) must be promoted and all potential I&APs must be informed early and in an informative and proactive way regarding applications that may affect their lives or livelihood in order to give effect to the above sections, and that it is essential to ensure that there is adequate and appropriate opportunity for public participation in decisions that may affect the environment.

The existing Esizayo and Maralla East and West Projects interested and affected party (I&AP) database will also be utilised for this amendment processes. I&APs will be provided with opportunity to review and make comments on the amendment application.

Table 1 below, provides the competent authority with the detailed process of the public participation process that will be undertaken by the project.

Table 1: Proposed Public Participation Plan

SUMMARY OF PPP REQUIREMENT (GNR 326 OF EIA REGULATIONS)

PROPOSED PLAN/ACTIVITIES

<p>41(2) The person conducting a PPP must give notice to all potential I&APs by-</p> <p>(a) fixing a notice board at a place conspicuous to and accessible by the public at the boundary, on the fence or along the corridor of—</p> <p>(i) the site where the activity to which the application or proposed application relates is or is to be undertaken; and</p> <p>(ii) any alternative site;</p>	<ul style="list-style-type: none"> — Placement of site notices (in English and Afrikaans) at appropriate locations on site and in the surrounding area. — This will include the boundary to the site, along the powerline alignments, as well as additional public places in the closest towns within the project area, such as grocery stores, municipality, and/or local public library.
---	--

The Pavilion, 1st Floor
Cnr Portswood and Beach Road, Waterfront
Cape Town, 8001
South Africa

T: +27 21 481 8700
F: +086 606 7121
www.wsp.com

**SUMMARY OF PPP REQUIREMENT
(GNR 326 OF EIA REGULATIONS)**

PROPOSED PLAN/ACTIVITIES

<p>(b) giving written notice, in any of the manners provided for in section 47D of the Act, to—</p> <p>(i) the occupiers of the site and, if the proponent or applicant is not the owner or person in control of the site on which the activity is to be undertaken, the owner or person in control of the site where the activity is or is to be undertaken and to any alternative site where the activity is to be undertaken;</p> <p>(ii) owners, persons in control of, and occupiers of land adjacent to the site where the activity is or is to be undertaken and to any alternative site where the activity is to be undertaken;</p> <p>(iii) the municipal councillor of the ward in which the site and alternative site is situated and any organisation of ratepayers that represent the community in the area;</p> <p>(iv) the municipality which has jurisdiction in the area;</p> <p>(v) any organ of state having jurisdiction in respect of any aspect of the activity; and</p> <p>(vi) any other party as required by the competent authority;</p>	<ul style="list-style-type: none"> – Written notification (in English and Afrikaans) will be sent to owners and occupiers on or adjacent to the proposed project site, municipality ward councillor, local and district municipality, and relevant state departments. – General communication (written notification) with stakeholders (public and government departments/authorities) throughout the Basic Assessment (BA) and EMPr amendment processes. – Stakeholders will be added to the database on request as the project progresses.
<p>(c) placing an advertisement in—</p> <p>(i) one local newspaper; or</p> <p>(ii) any official Gazette that is published specifically for the purpose of providing public notice of applications or other submissions made in terms of these Regulations;</p>	<p>An advert will be published in two local newspapers (in English and Afrikaans), formally announcing the commencement of the Environmental Authorisation (EA) application and EMPr amendment processes, requesting stakeholders to register their interest in the project, and informing them of the release of the Draft BARs and amended EMPs for public review and comment.</p>
<p>(d) placing an advertisement in at least one provincial newspaper or national newspaper, if the activity has or may have an impact that extends beyond the boundaries of the metropolitan or district municipality in which it is or will be undertaken</p>	<p>One advert will be placed in a regional newspaper (which covers the full study area as the impact of the Maralla East WEF activities extend within the boundaries of two district municipalities and Provinces</p>
<p>(e) using reasonable alternative methods, as agreed to by the competent authority, in those instances where a person is desirous of but unable to participate in the process due to—</p> <p>(i) illiteracy;</p> <p>(ii) disability; or</p> <p>(iii) any other disadvantage.</p>	<ul style="list-style-type: none"> – The existing database for the Esizayo and Maralla East and West projects will be verified and updated for the purposes of the BA and EMPr amendment processes. As part of the verification process, existing I&APs will be contacted telephonically and asked to confirm their preferred method of communication. The POPI act will also be put into consideration to confirm all the relevant POPI requirements for the database. – The relevant ward councillors will be contacted to ensure that community-based organisations are aware of the Project and can assist in distributing and communicating relevant Project information to community members. – Given the ongoing COVID-19 pandemic and associated restrictions in place, no public meetings or focus group discussions have been provided for.
<p>(42) A proponent or applicant must ensure the opening and maintenance of a register of interested and affected parties and submit such a register to the competent authority,</p>	<ul style="list-style-type: none"> – Stakeholders with a potential interest in the Project will be identified at the outset of the Project. As noted above, the existing database for the Esizayo and Maralla East and West projects will be verified and updated for the purposes of the BA and EMPr amendment processes. The database will also be updated to include landowners and other stakeholders relevant to the Projects.



**SUMMARY OF PPP REQUIREMENT
(GNR 326 OF EIA REGULATIONS)**

PROPOSED PLAN/ACTIVITIES

	<ul style="list-style-type: none"> – All stakeholders identified will be registered on the project stakeholder database, and the database will be maintained throughout the BA and EMPr amendment processes.
<p>(43) & (44) Registered Interested and affected parties (I&APs) must be given 30 days to comment on the draft Report</p>	<p>The Draft BARs and amended EMPrs will be made available to all stakeholders for a 30-day comment period. Strict adherence to all COVID-19 protocols and regulations as well as best practice measures will be ensured throughout PPP. As a result, the Draft BARs and amended EMPrs will be made available to stakeholders as follows:</p> <ul style="list-style-type: none"> – From WSP on request – Online on the WSP website <p>At the time of disclosure, WSP will confirm the relevant COVID-19 protocols and regulations in place and, should it be permissible, a hard copy of the Draft BARs and amended EMPrs will be placed at local Public Libraries. <i>Note: WSP will confirm with the local library as to whether it is open and able to accept documents for public review prior to placement.</i></p> <p>A Comment and Response Report (CRR) will be generated for inclusion in Final BARs and amended EMPrs for consideration by the competent authority.</p>

Table 2: Meetings

PROJECT MEETINGS

<p>Pre-Application Meeting</p>	<p>A pre-application consultation with DFFE was held on 28 July 2021 to discuss the proposed projects, proposed approach, and confirm the process.</p>
<p>Public and/or Focus Group Meetings</p>	<p>No provision has been made for public or focus group meetings due to current COVID-19 restrictions. Should significant interest be obtained in this project, a public meeting will be included as part of the PPP, should COVID-19 protocols and regulations permit.</p>