

Figure 1: Biophysical features map from the results of the scoping evaluation for the grid connection infrastructure project

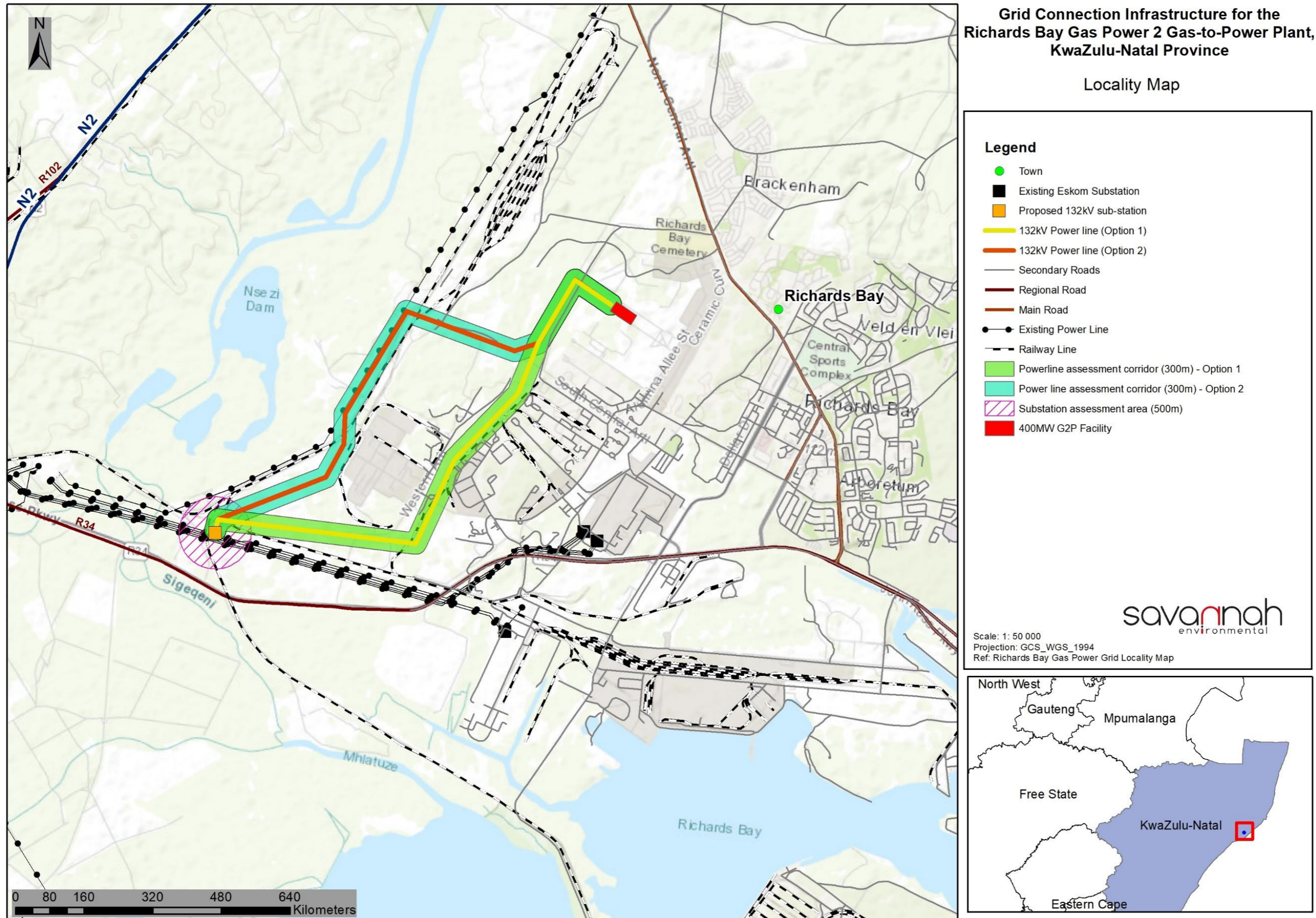


Figure 1.1: Locality Map of the proposed power line corridor alternatives and switching station location alternatives

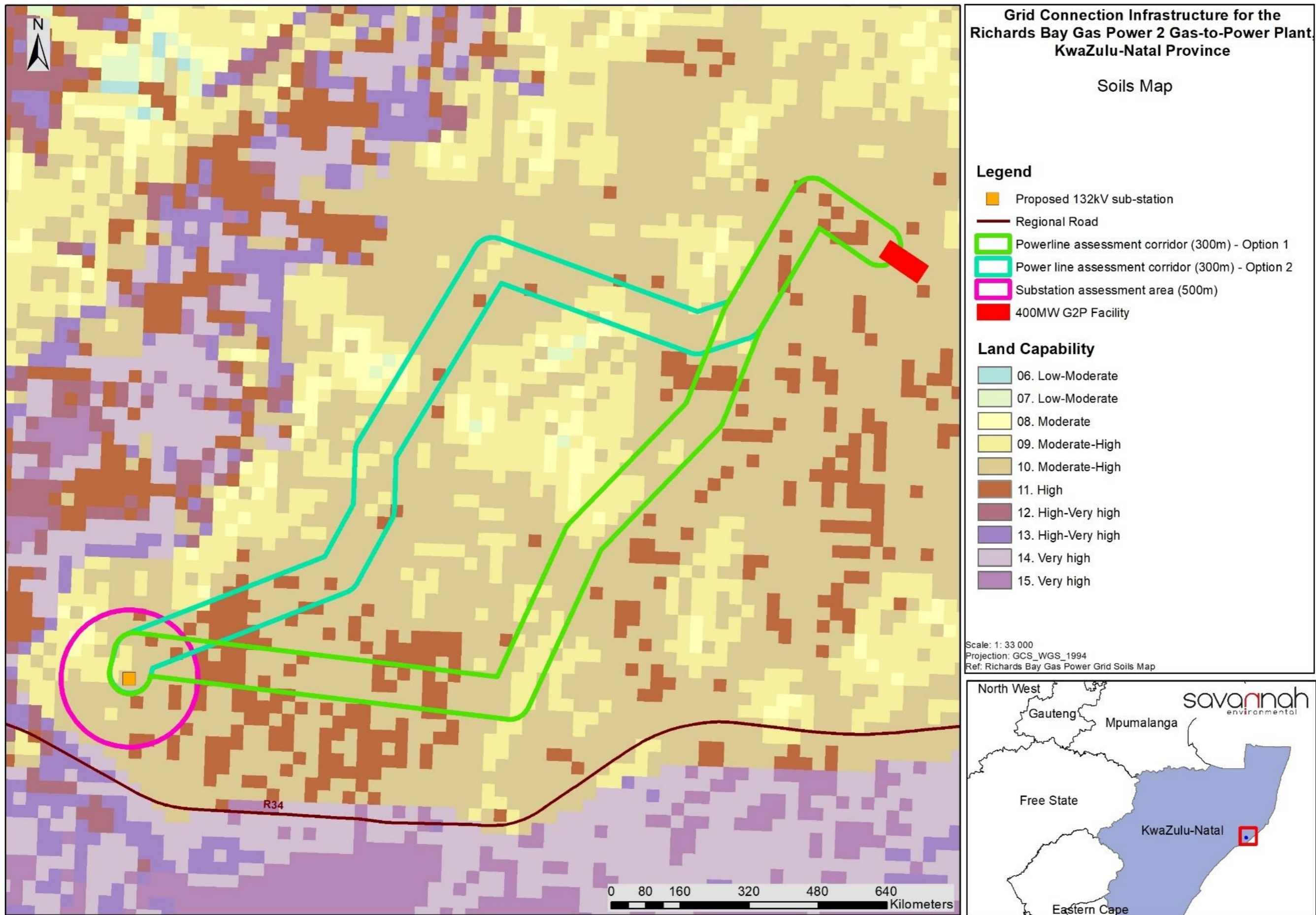


Figure 4.1: Soils and land capacity in the study area (as determined form existing information)

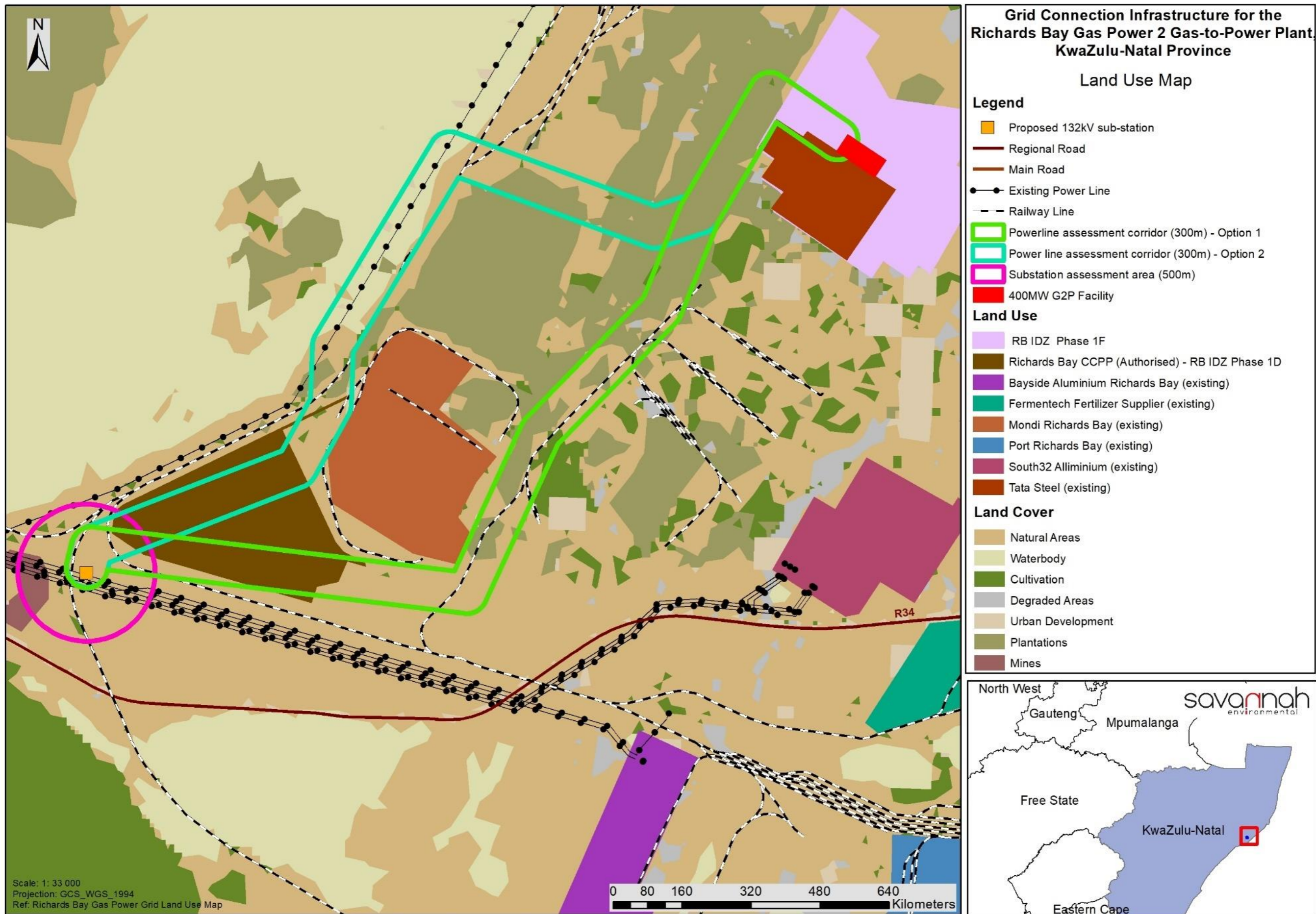


Figure 4.2: Land use in the Richards Bay area (as determined from existing information)

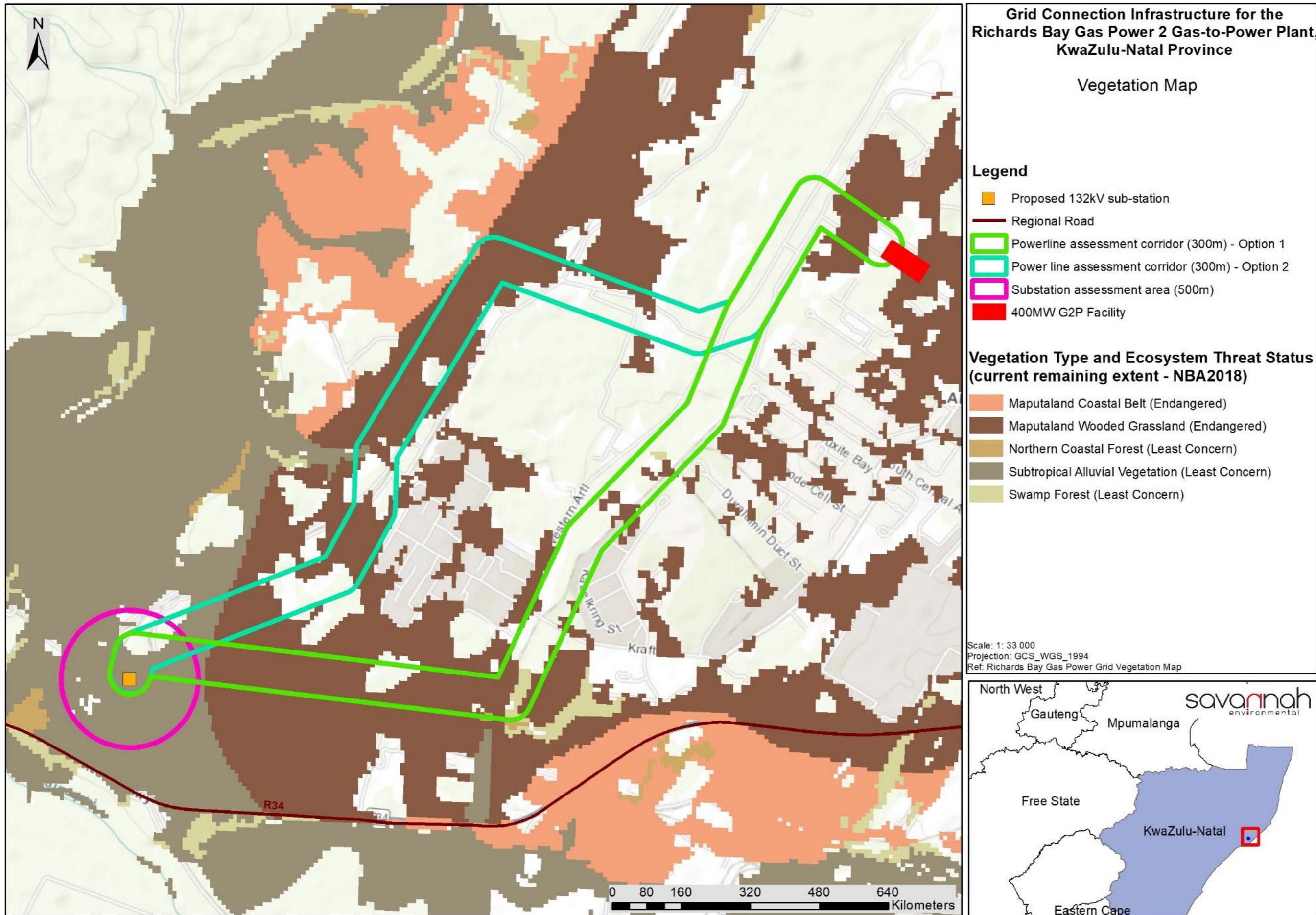


Figure 4.3: Vegetation within the study area

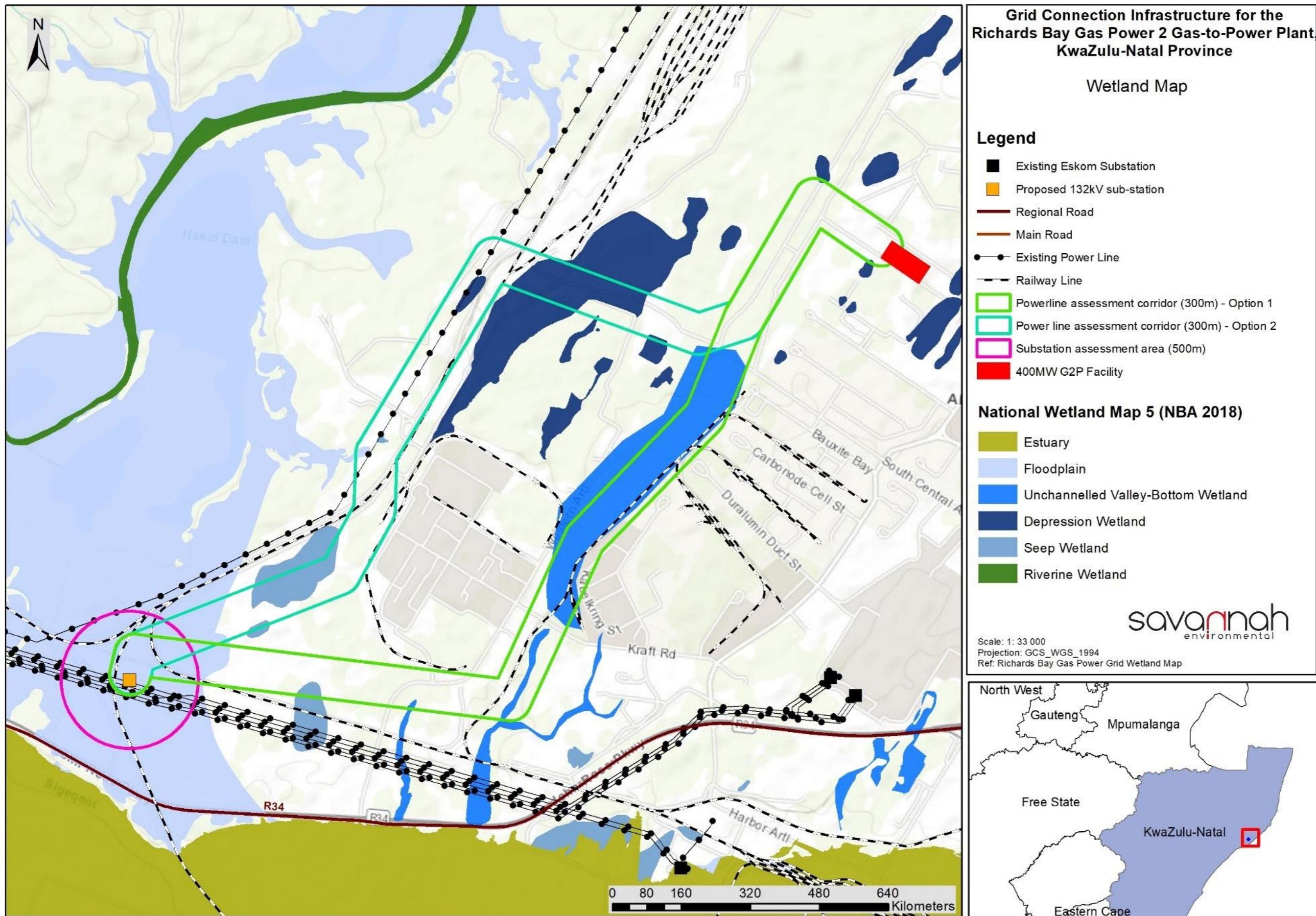


Figure 4.4: Wetlands identified in the study area from existing information available

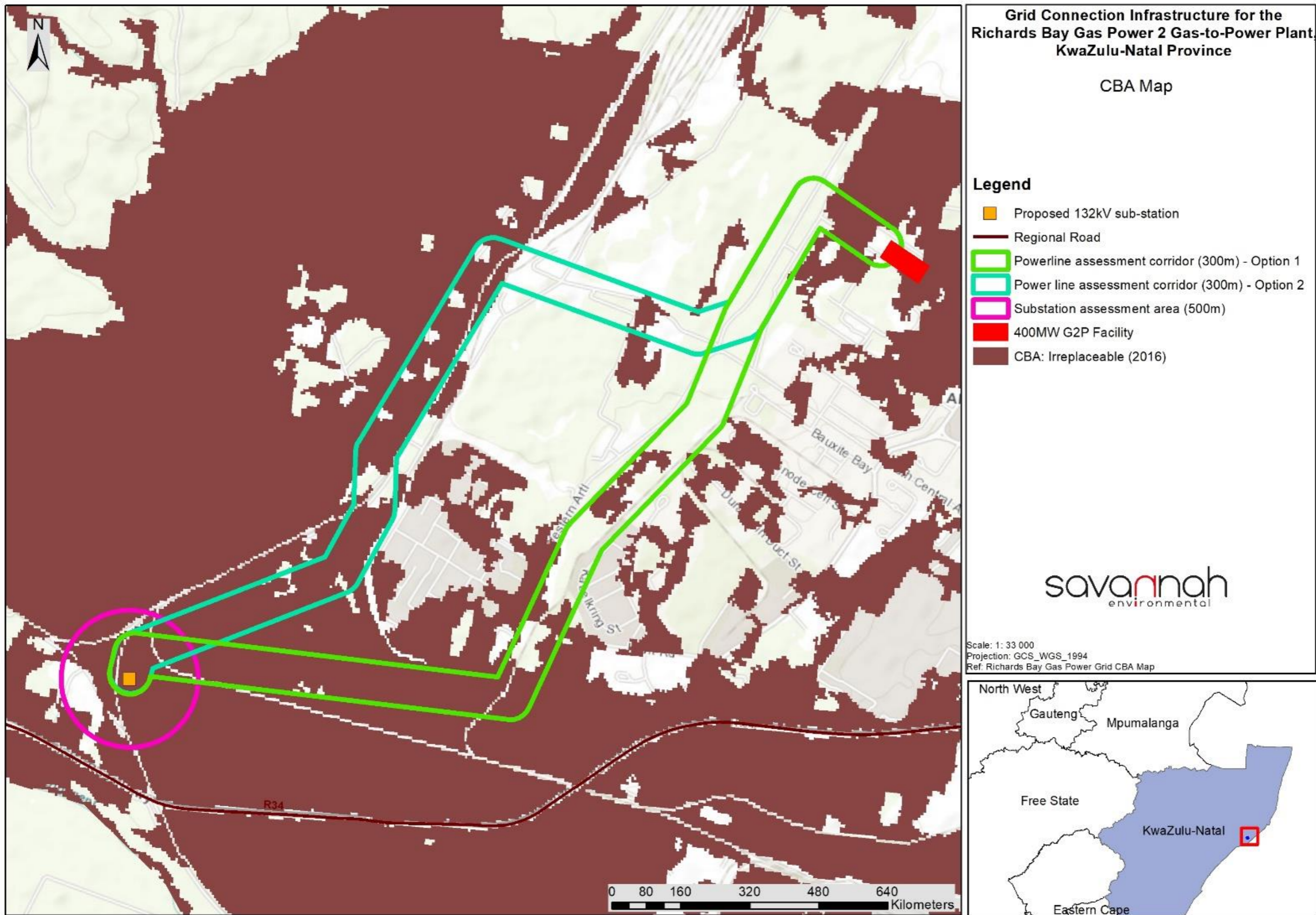


Figure 4.5: CBA classification of the study area from existing information available

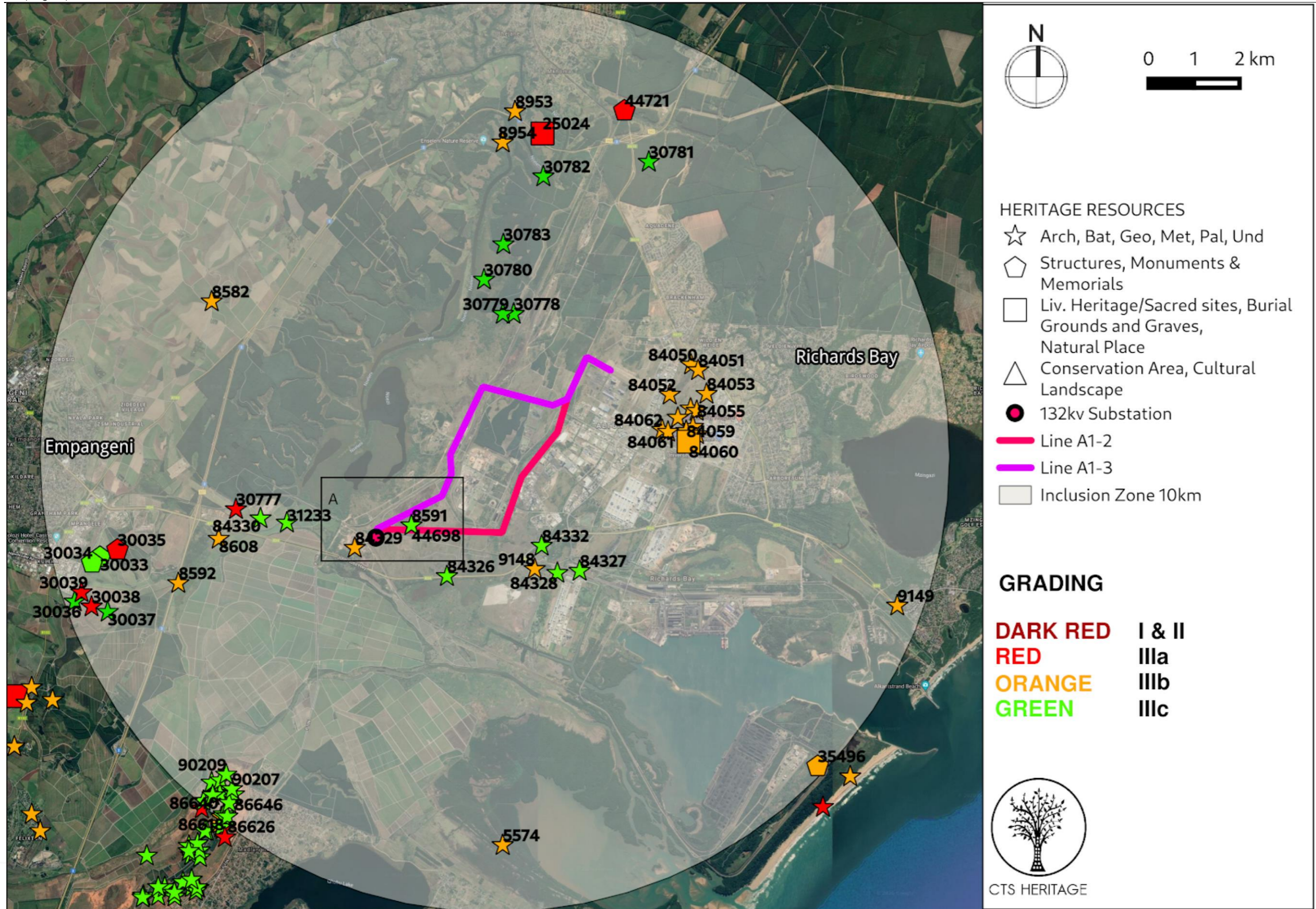


Figure 4.6: Heritage features within the broader study area of the grid connection and switching station corridors



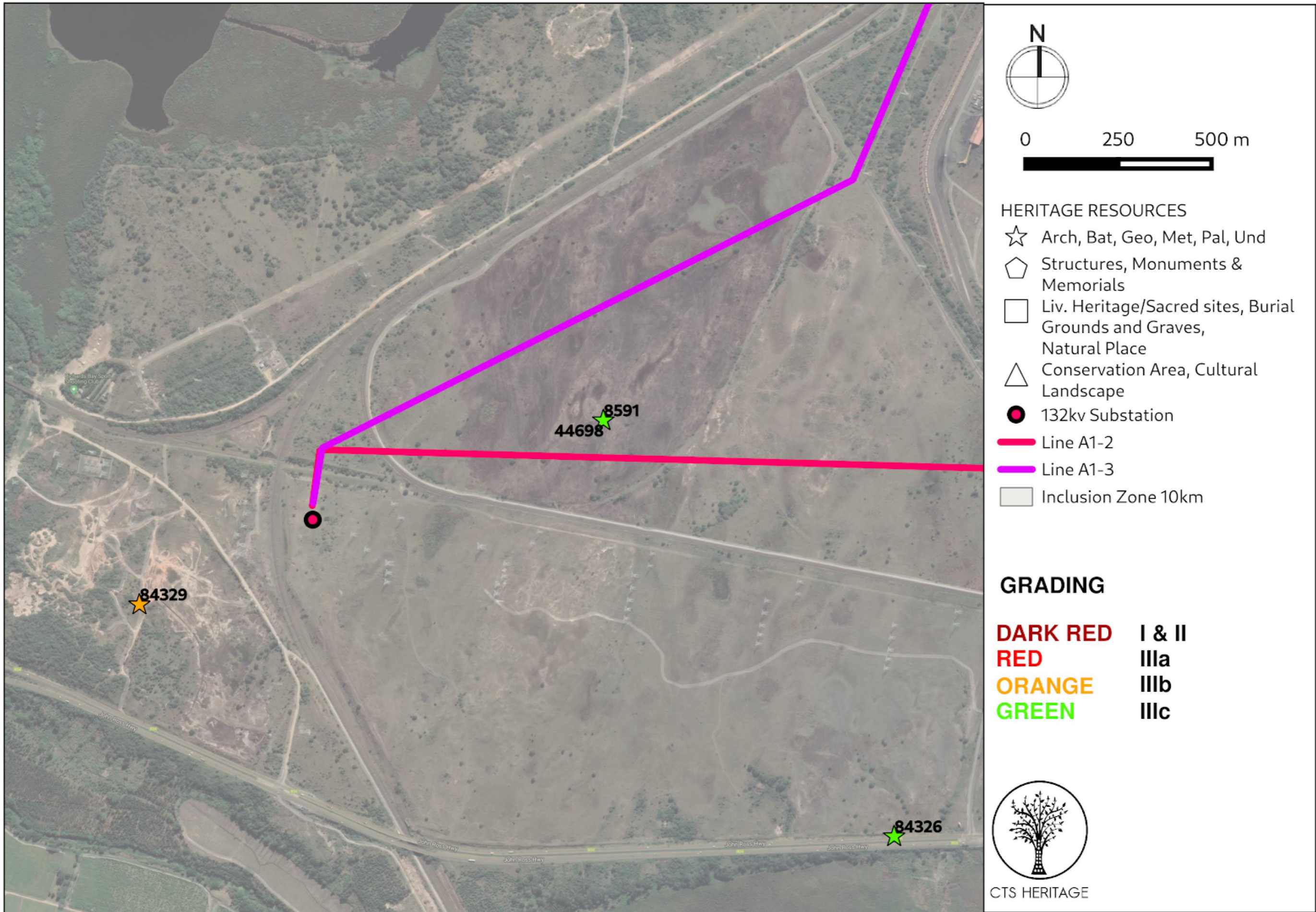


Figure 4.7: Inset map showing the heritage feature location near the switching station and grid connection corridor towards the southern alignment of the grid connection corridors.

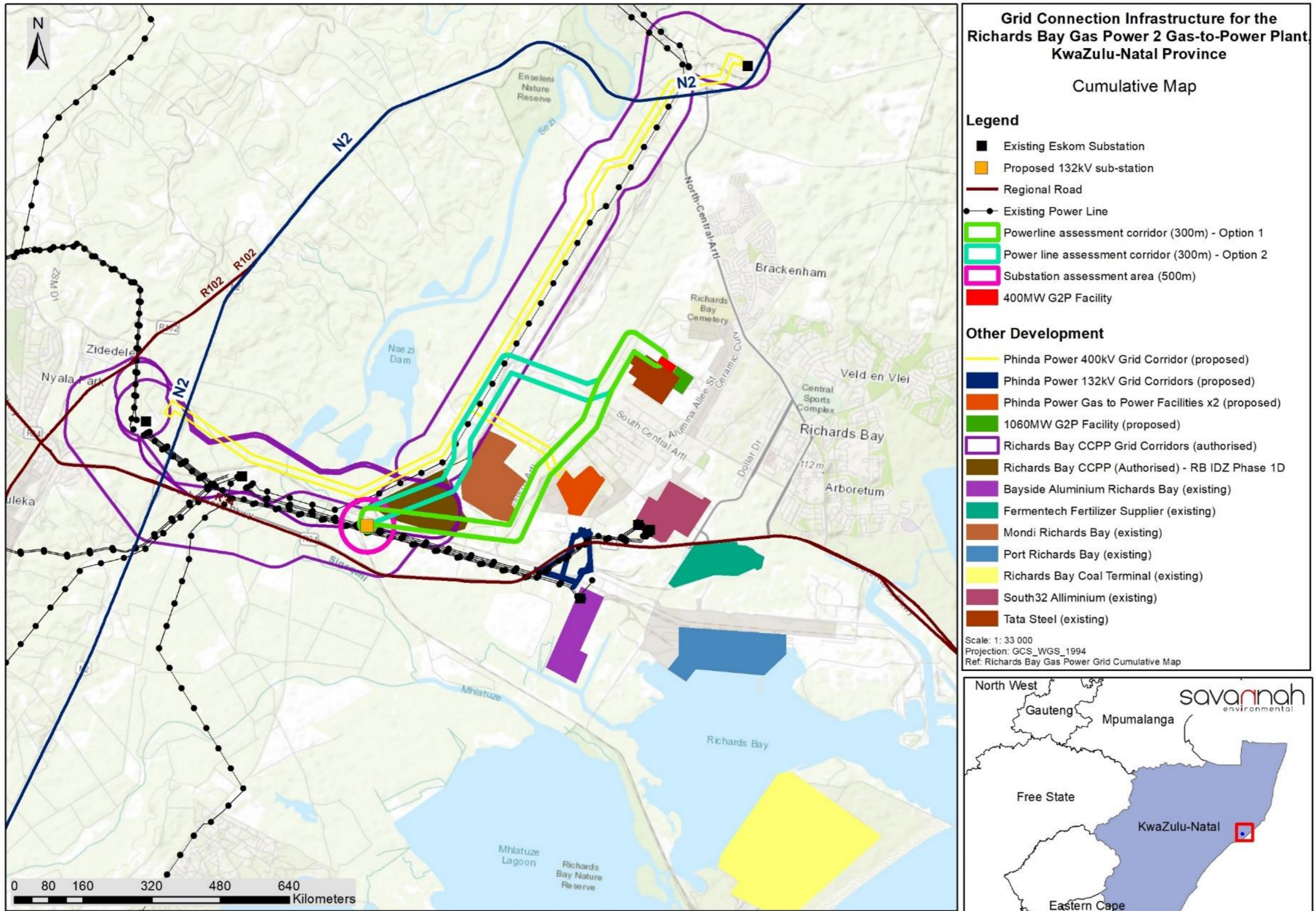


Figure 6.1: Cumulative map illustrating other approved and/or constructed grid connection infrastructure located within the vicinity of the grid corridor alternatives and switching station site

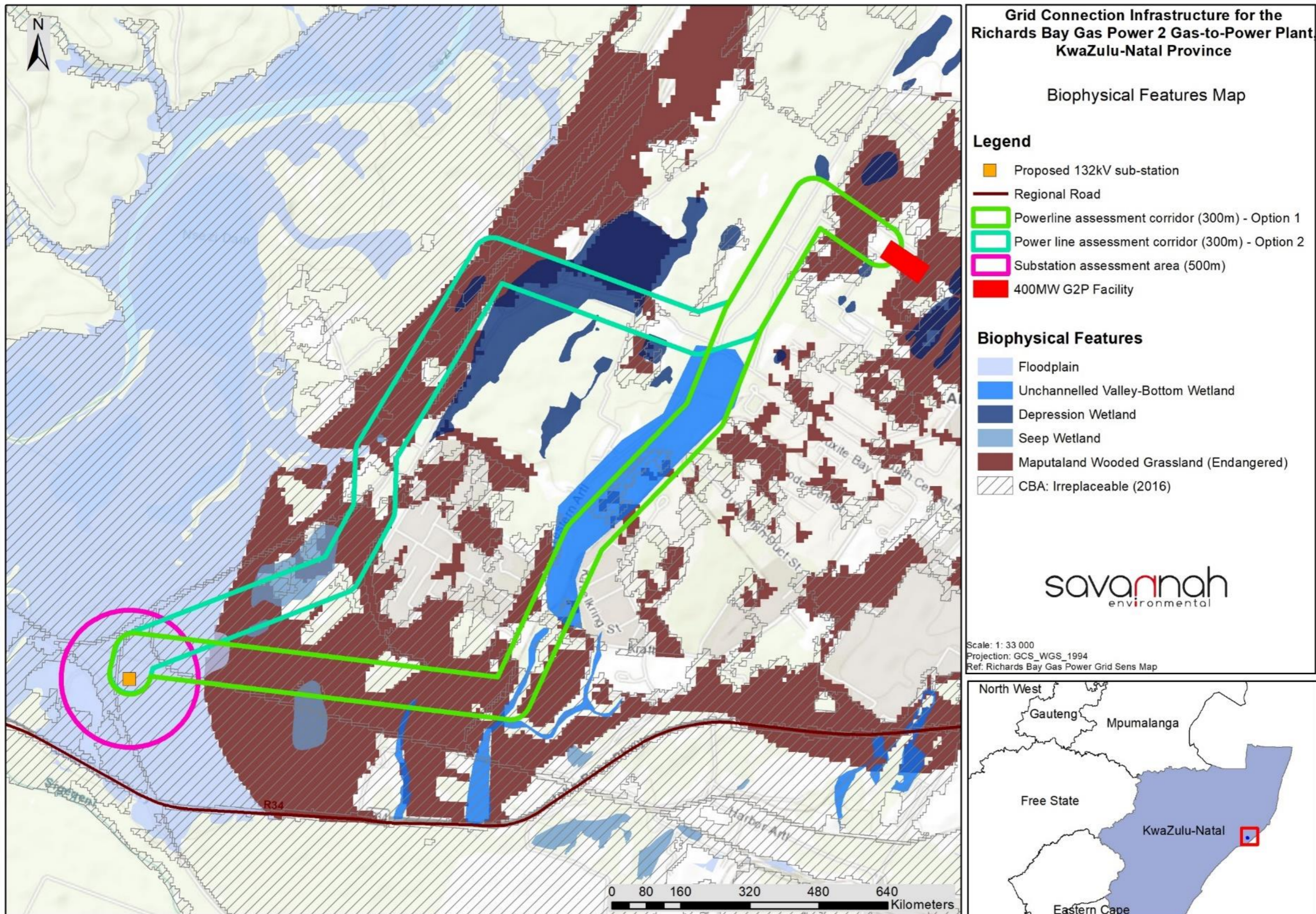


Figure 7.1: Biophysical features map from the results of the scoping evaluation