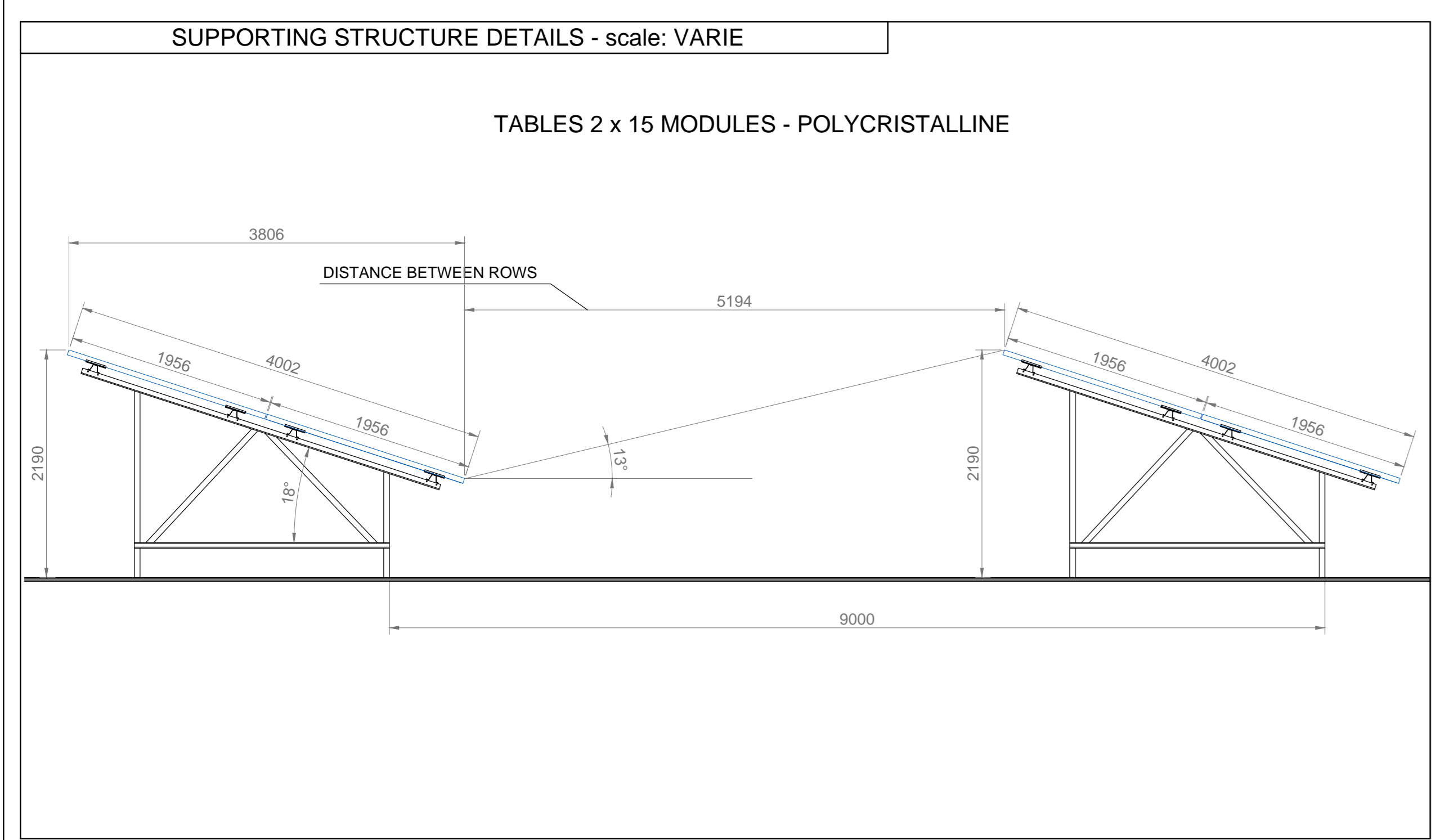
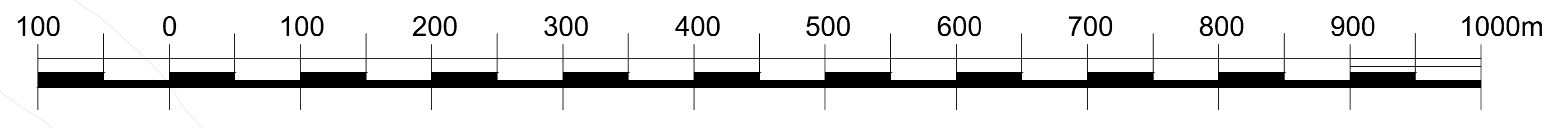
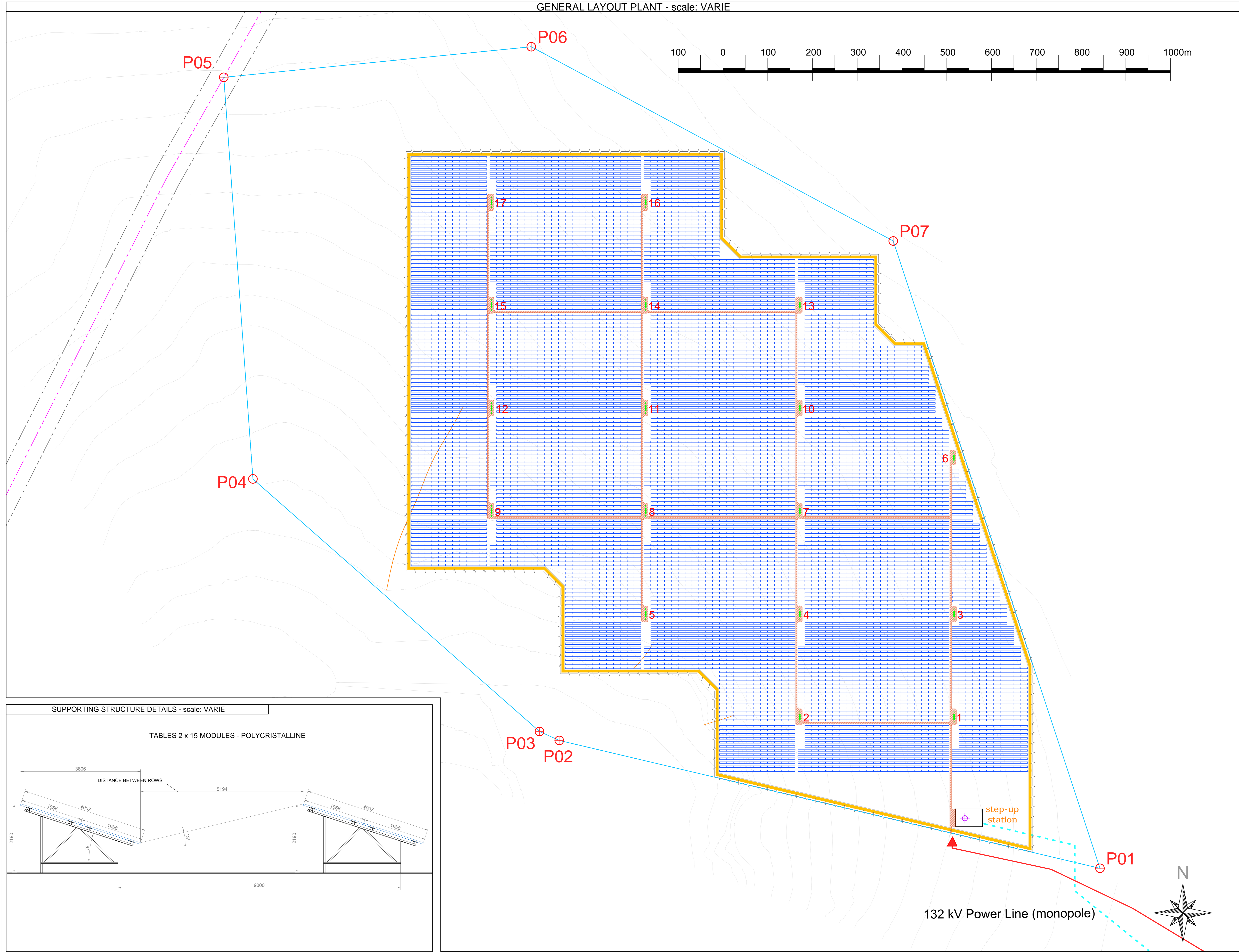
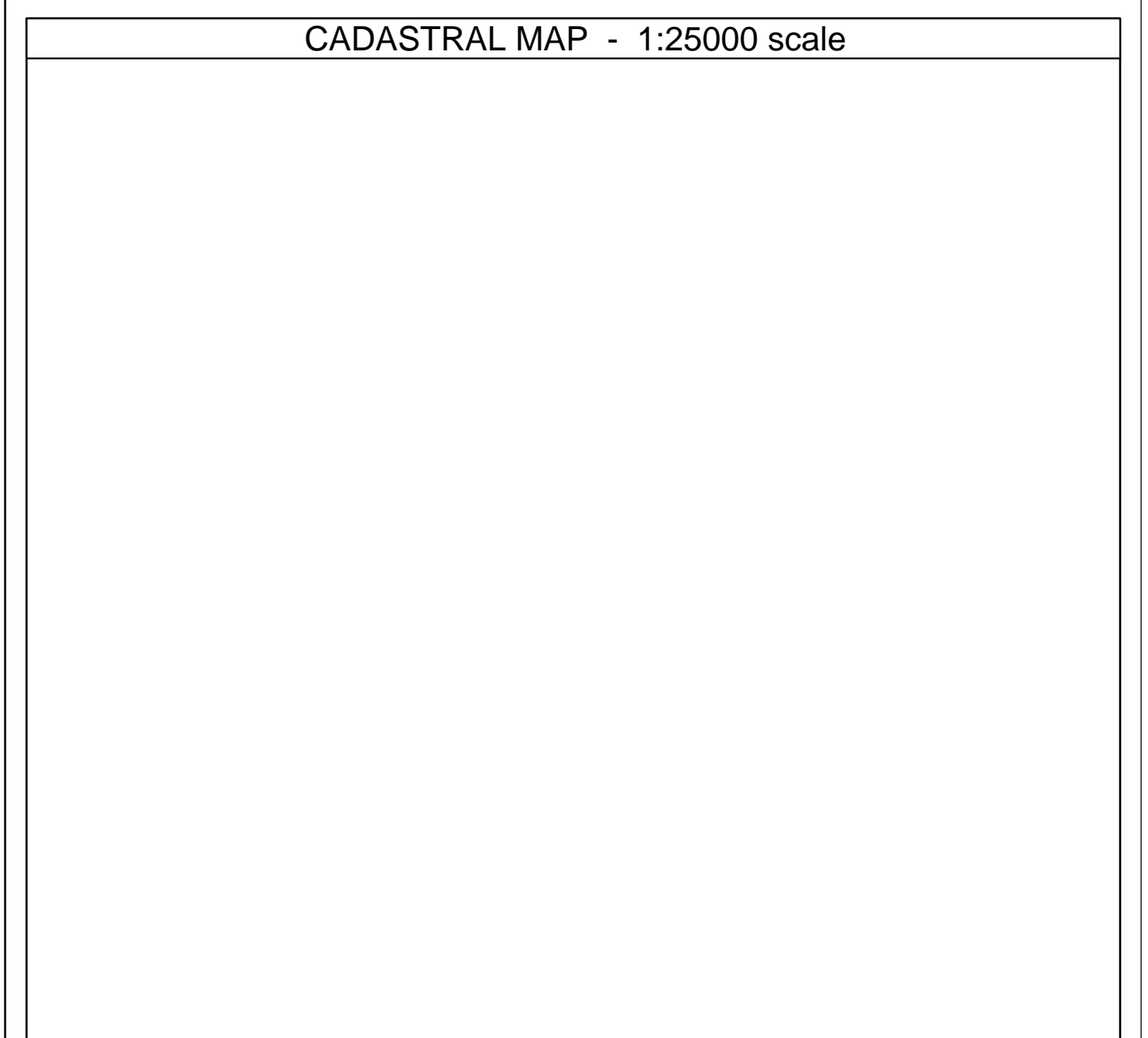
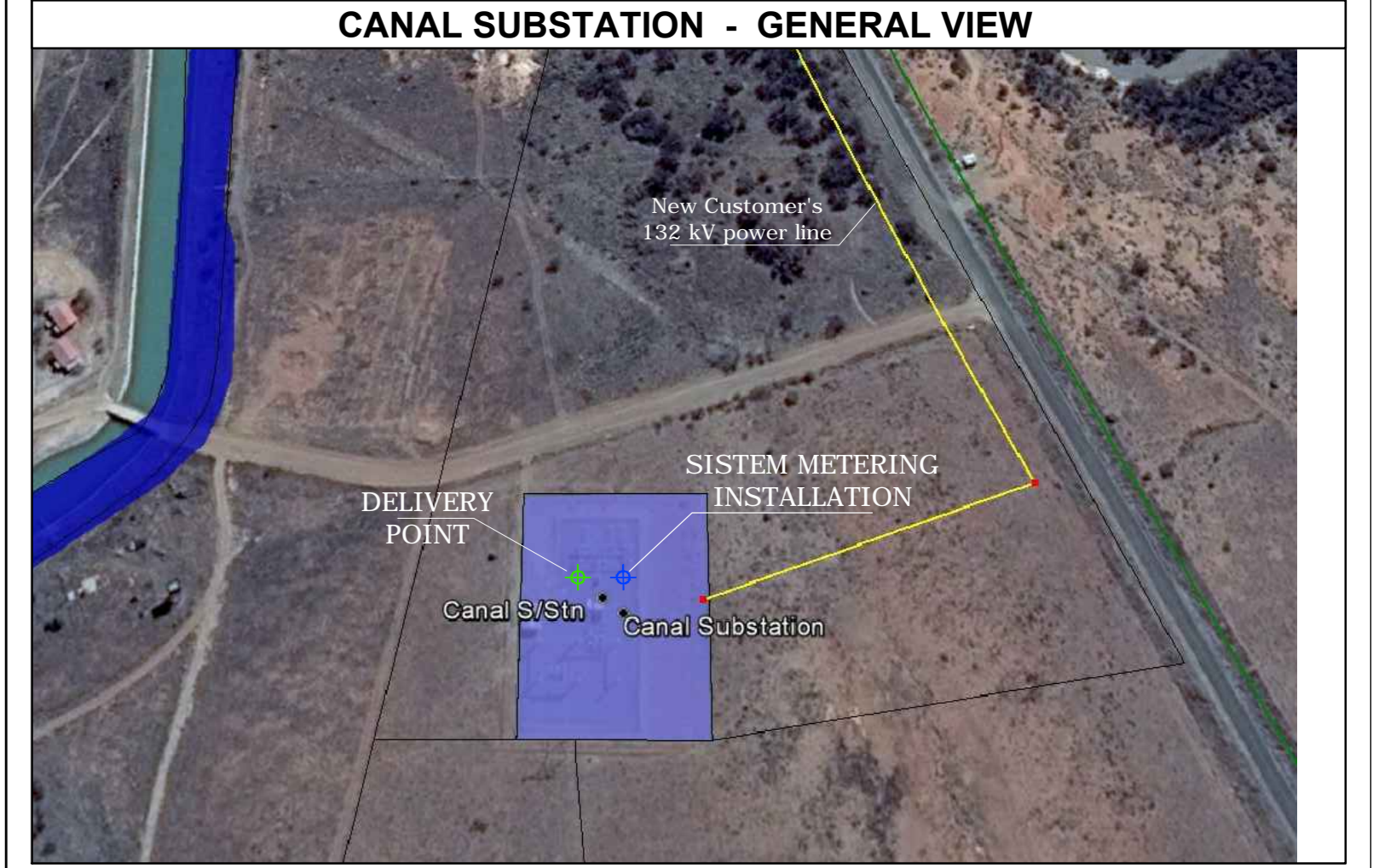
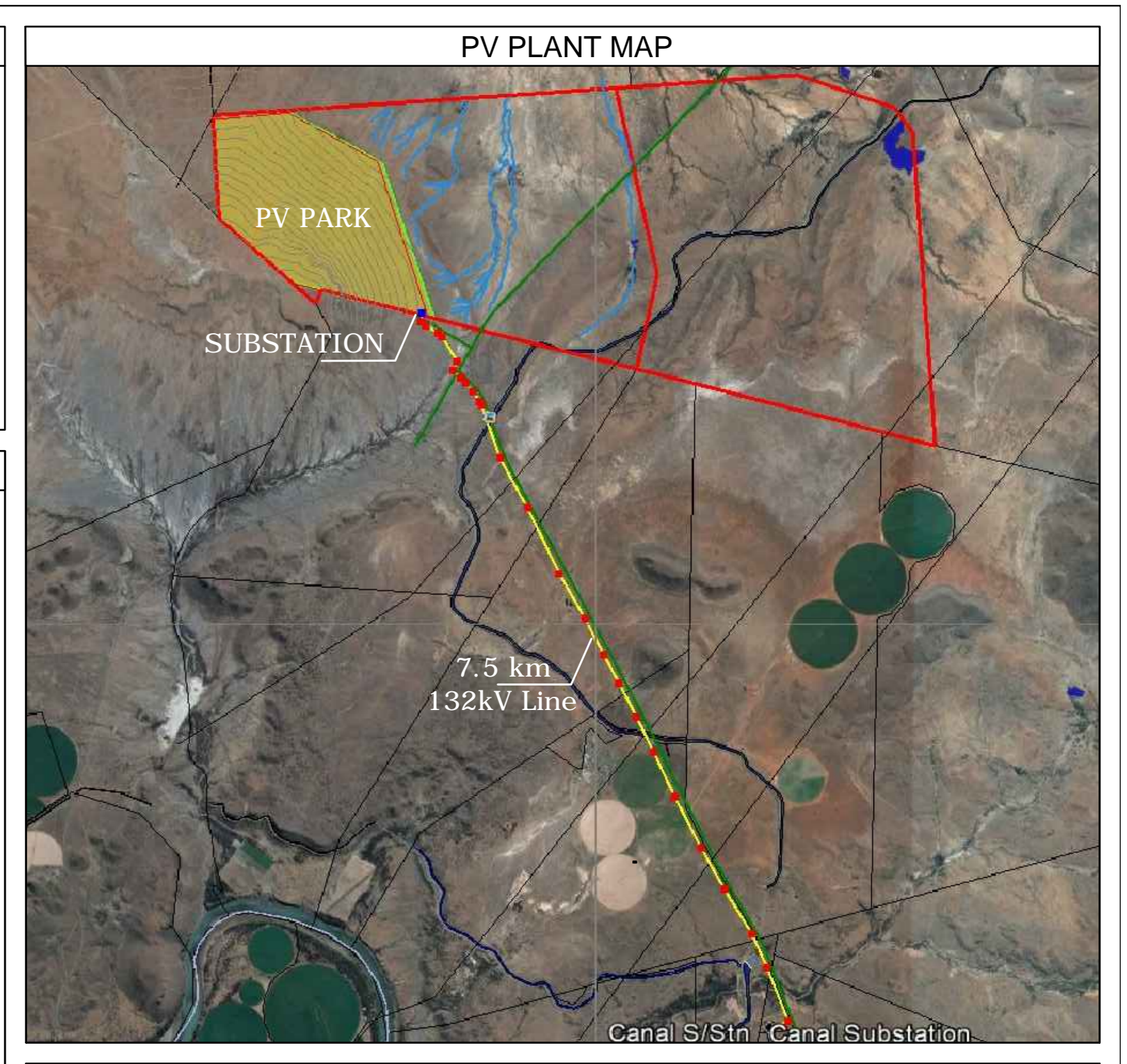


GROOTPOORT SOLAR PARK		KEY		GEO - GRAPHICAL COORDINATES			LEGAL DESCRIPTION	
NUMBER MODULE: 273,780	INVERTER CABINET	ESKOM 765 kV power line and servitude	SYSTEM MEETING INSTALLATION	CORNER	EAST	SOUTH	Cadastral Plot Name:	
STRING: 30 MODULES	INTERNAL ROADS	132 kV Power Line (monopole)	DELIVERY POINT	P01:ES	Portion ... of the Farm No.,	
NUMBER STRING: 9,126	ACCESS ROADS	Existing Erosion Channel	FACILITY MEETING INSTALLATION	P02:ES Local Municipality	
DC POWER [kWp]: 86,240.70	PERIMETER FENCES			P03:ES District Municipality	
AC POWER [kW]: 75,000	PV TABLES (2 x 15 MODULES)			P04:ES Province	
N. CONVERSION CABINET: 17	FIREBREAK > 6 m			P05:ES	LPI code:	
FACILITY FENCED AREA: 147 Hectares				P06:ES		
INTERNAL ROAD: 20,000 sqm				P07:ES		



Terni Energia EPC contractor
Terni Energia S.p.A.
 Strada dello Stabilimento 1
 05035 Narni (TR)

Solar PV Plant 75 MW "GROOTPOORT SOLAR PARK"
 Fixed Structure-Polycrystalline 1500Vdc
 pitch 9m

Review Date	Review Description	Designed	Verified	Approved
March/2016	00 - ISSUING PRELIMINARY PROJECT	M. Mantovani	M. Mantovani	

SCALE: various DRAWING: 1/1 DESCRIPTION: SCALE DRAWING OF THE FACILITY
 DATE: March/2016
 FORMAT: A0

PELE GREEN ENERGY
 3 Centex Close,
 Brooklyn Place, Eastgate
 Kramerville, Sandton