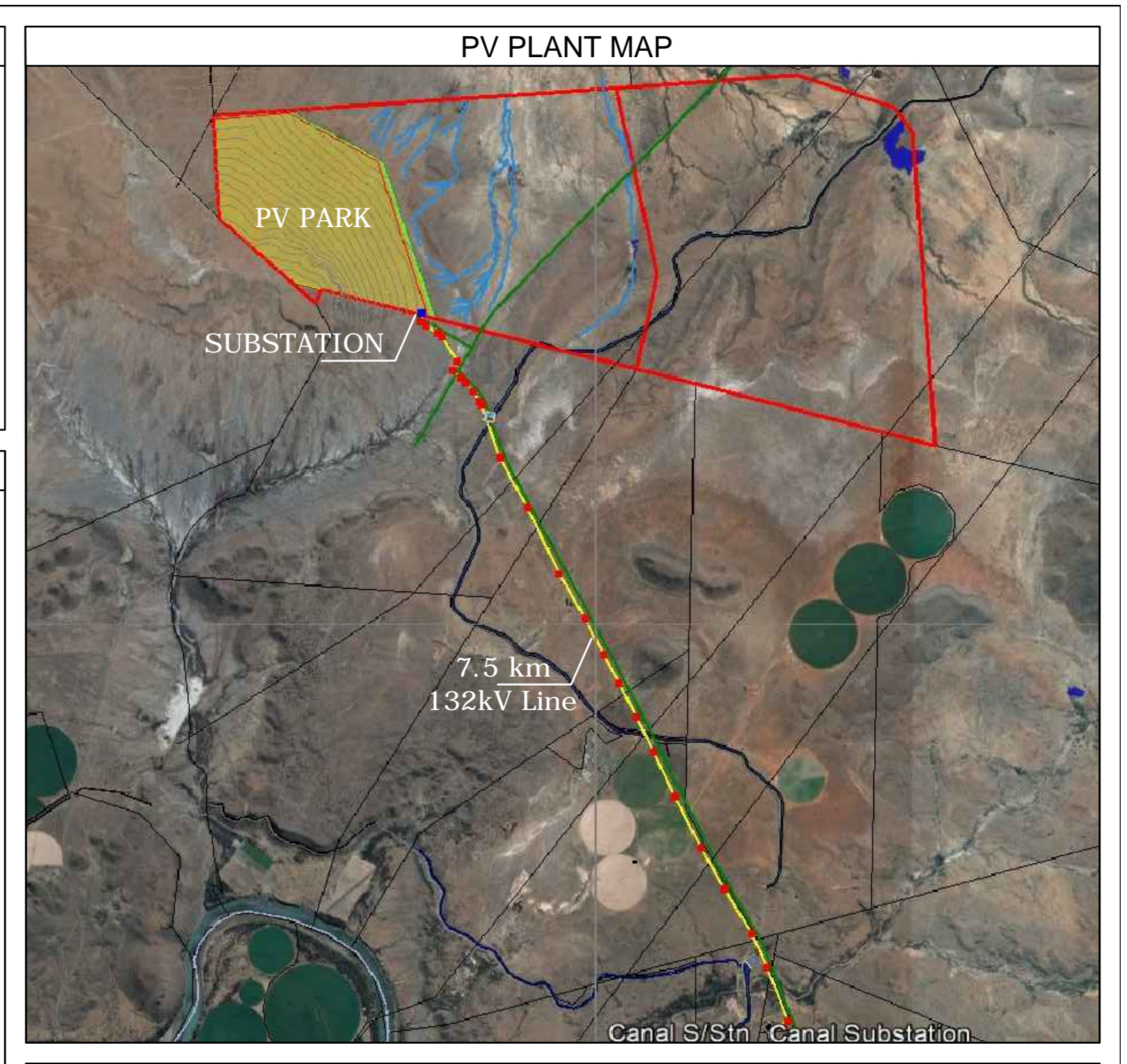
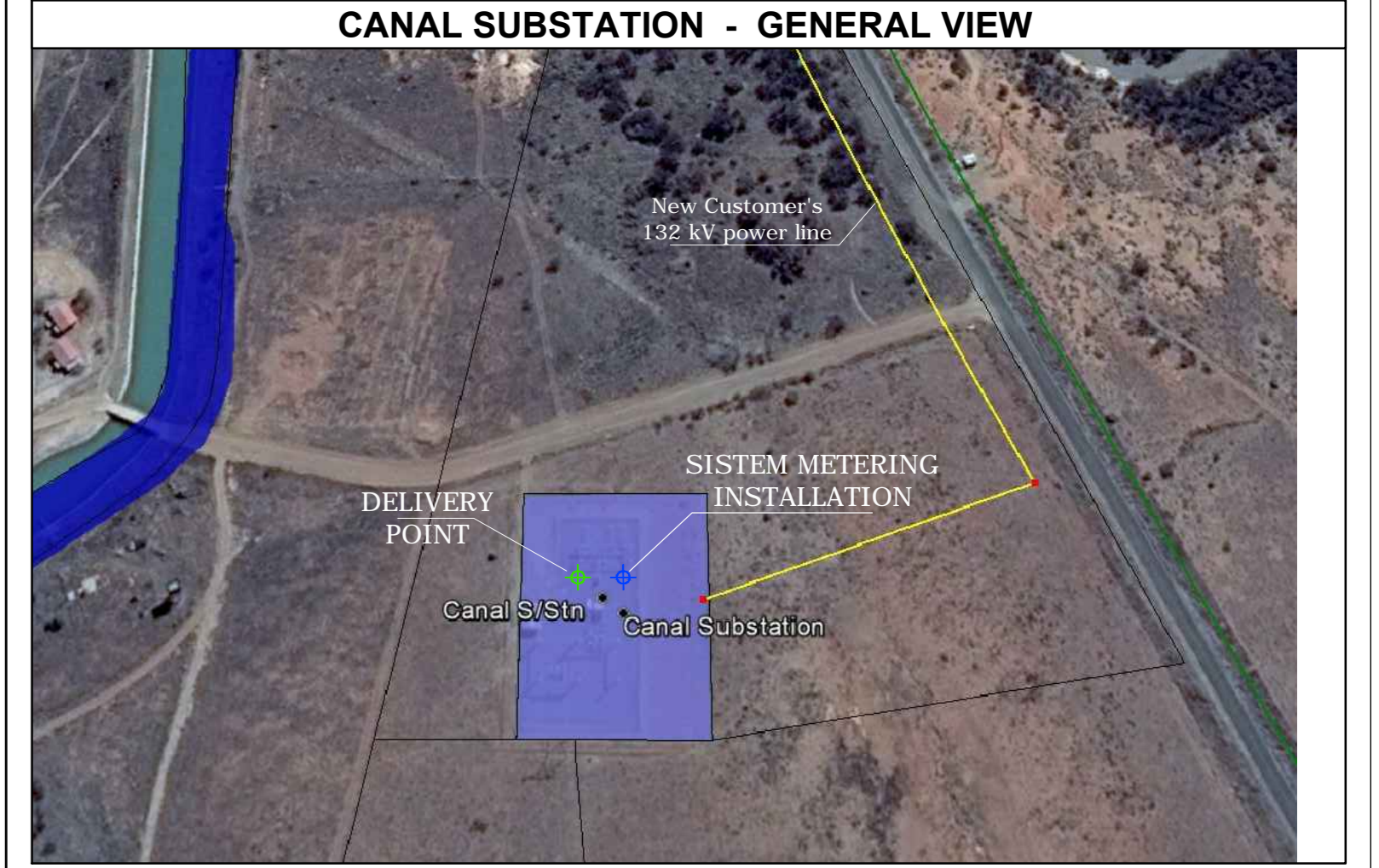
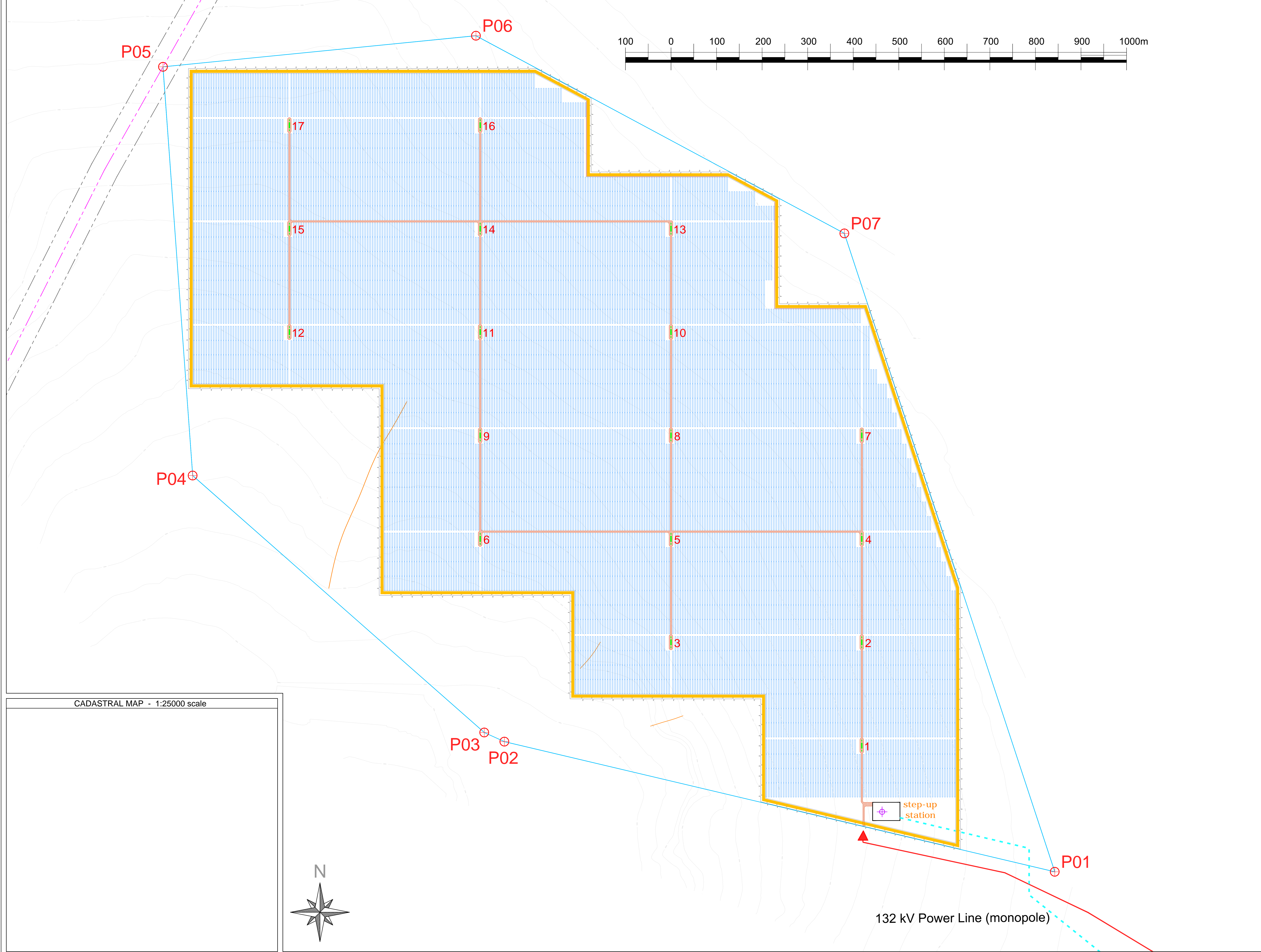


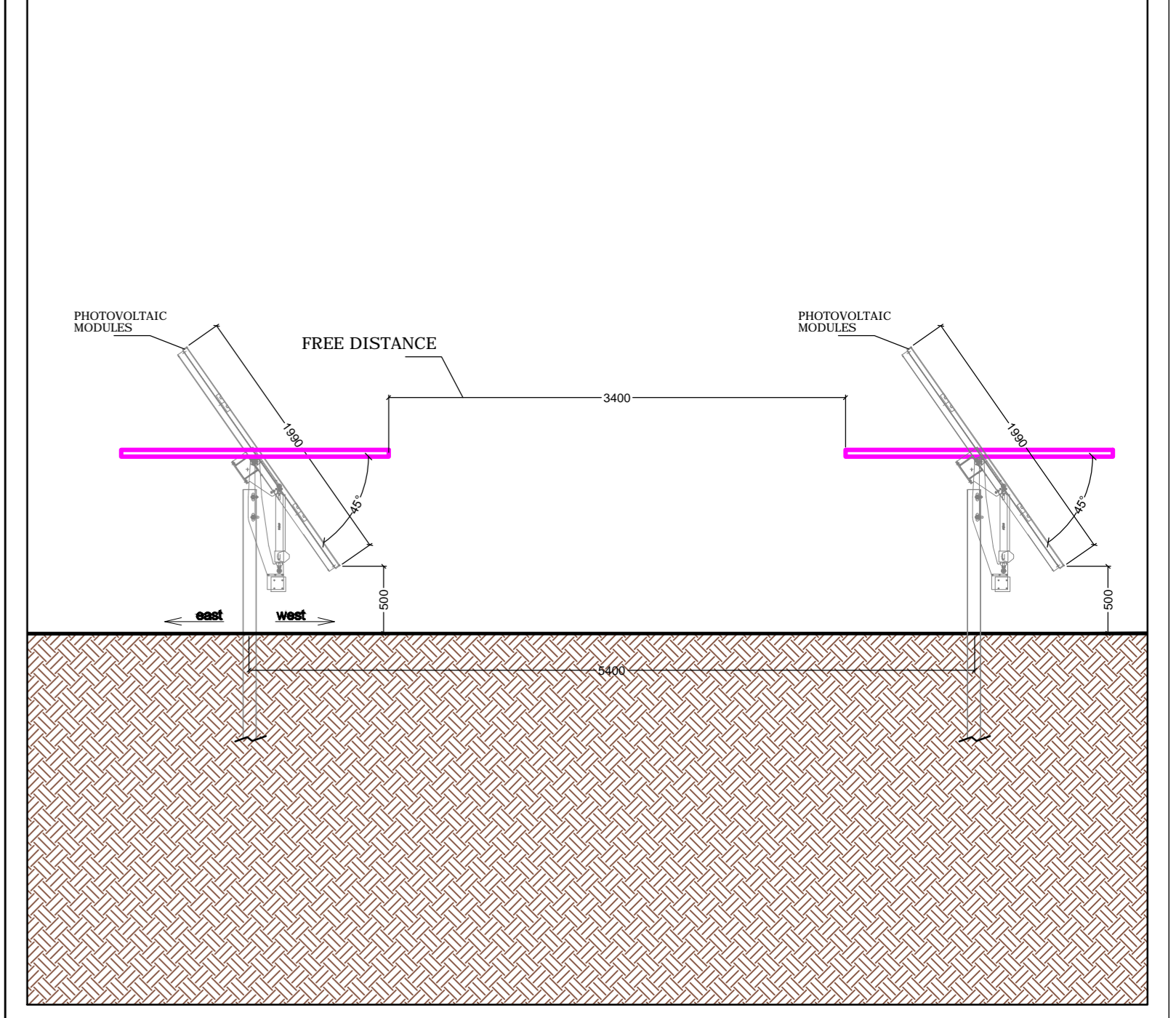
GROOTPOORT SOLAR PARK	KEY			GEO - GRAPHICAL COORDINATES			LEGAL DESCRIPTION	
NUMBER MODULE: 273,780 STRING: 30 MODULES NUMBER STRING: 9,126 DC POWER [kWp]: 86,240.70 AC POWER [kW]: 75,000 N. CONVERSION CABINET: 17 FACILITY FENCED AREA: 172 Hectares INTERNAL ROAD: 20,000 sqm	INVERTER CABINET	SUBSTATION	Eskom 765 kV power line and servitude	SYSTEM METERING INSTALLATION	CORNER	EAST	SOUTH	LEGAL DESCRIPTION
INTERNAL ROADS	132 kV Power Line (monopole)	DELIVERY POINT	Existing Erosion Channel	DELIVERY POINT	P01:ES	Cadastral Plot Name:
ACCESS ROADS	PROJECT SITE BOUNDARIES	FACILITY MEETING INSTALLATION		FACILITY MEETING INSTALLATION	P02:ES	Portion ... of the Farm No.,
PERIMETER FENCES					P03:ES Local Municipality
PV TABLES (3 x 15 MODULES)					P04:ES District Municipality
FIREBREAK > 6 m				ACCESS POINT	P05:ES Province
					P06:ES	LPI code:
					P07:ES	



GENERAL LAYOUT PLANT - scale: VARIE



SUPPORTING STRUCTURE DETAILS - scale: VARIE



Terminergia S.p.A.
Strada dello Stabilimento 1
05035 Narni (TR)

EPC contractor

Solar PV Plant 75 MW

"GROOTPOORT SOLAR PARK"

Tracker-Polycrystalline 1500Vdc
pitch 5.4 m

Review Date	Review Description	Designed	Verified	Approved
March/2016	00 - ISSUING PRELIMINARY PROJECT	M. Mantovani	M. Mantovani	

SCALE: various
DATE: March/2016
FORMAT: A0

DRAWING: 1/1

DESCRIPTION: SCALE DRAWING OF THE FACILITY

PELE GREEN ENERGY

Pele Green Energy
3 Centex Close,
Brooklyn Place, Eastgate
Kramerville, Sandton

This document is property of Terminergia S.p.A. It is strictly forbidden to reproduce this document or whole or in part, and to provide or disseminate any related information without the previous written consent by Terminergia S.p.A.