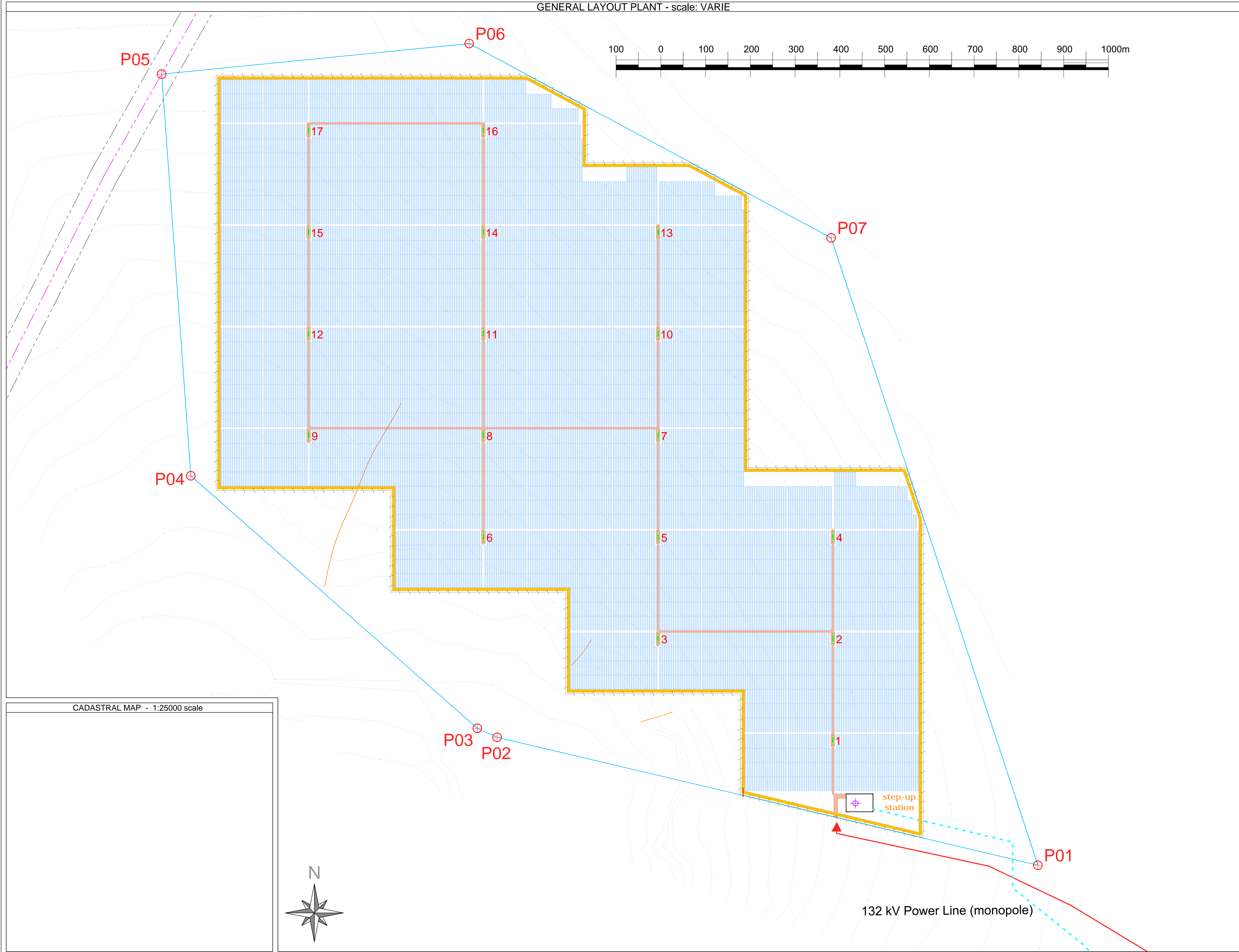
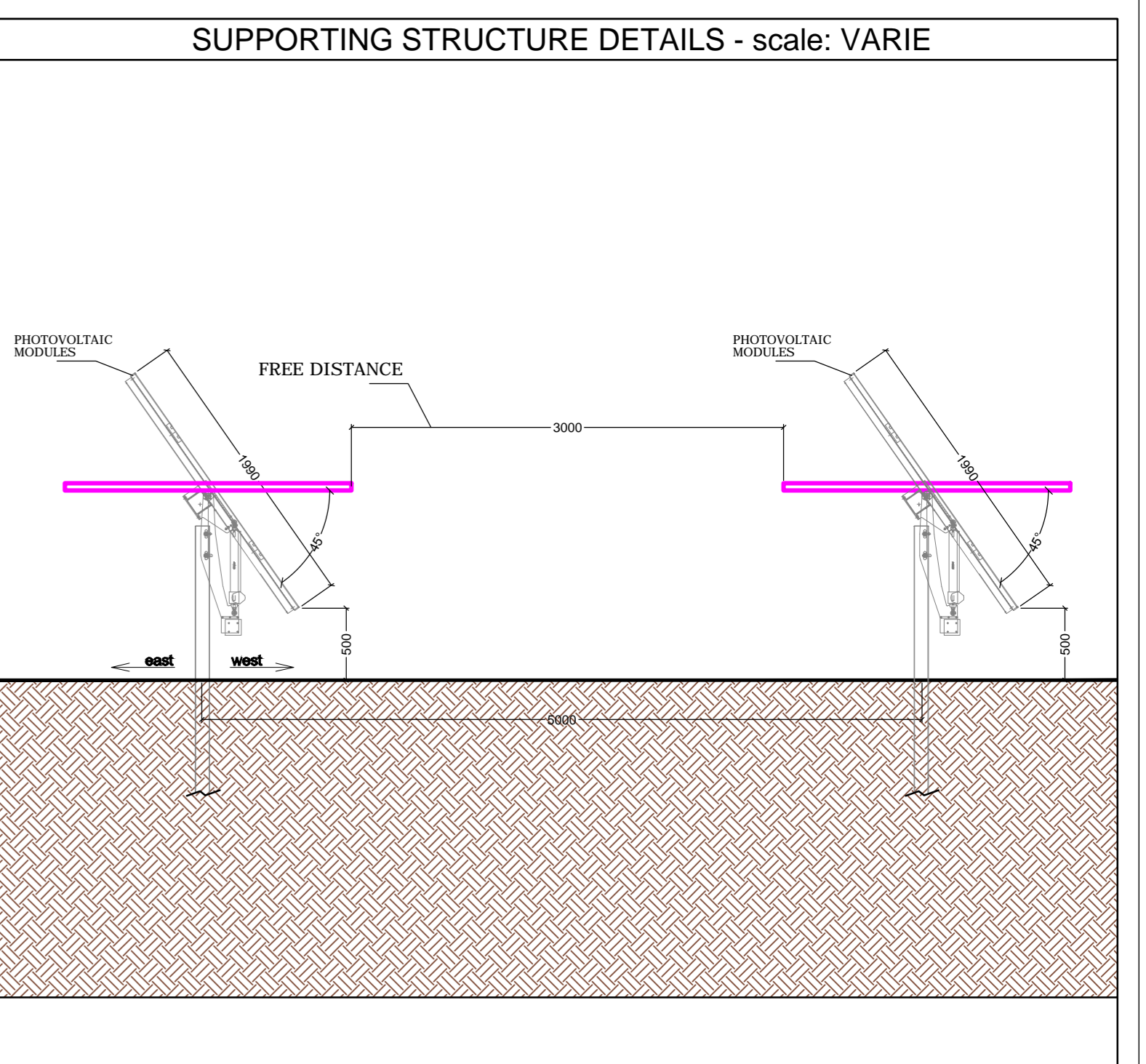
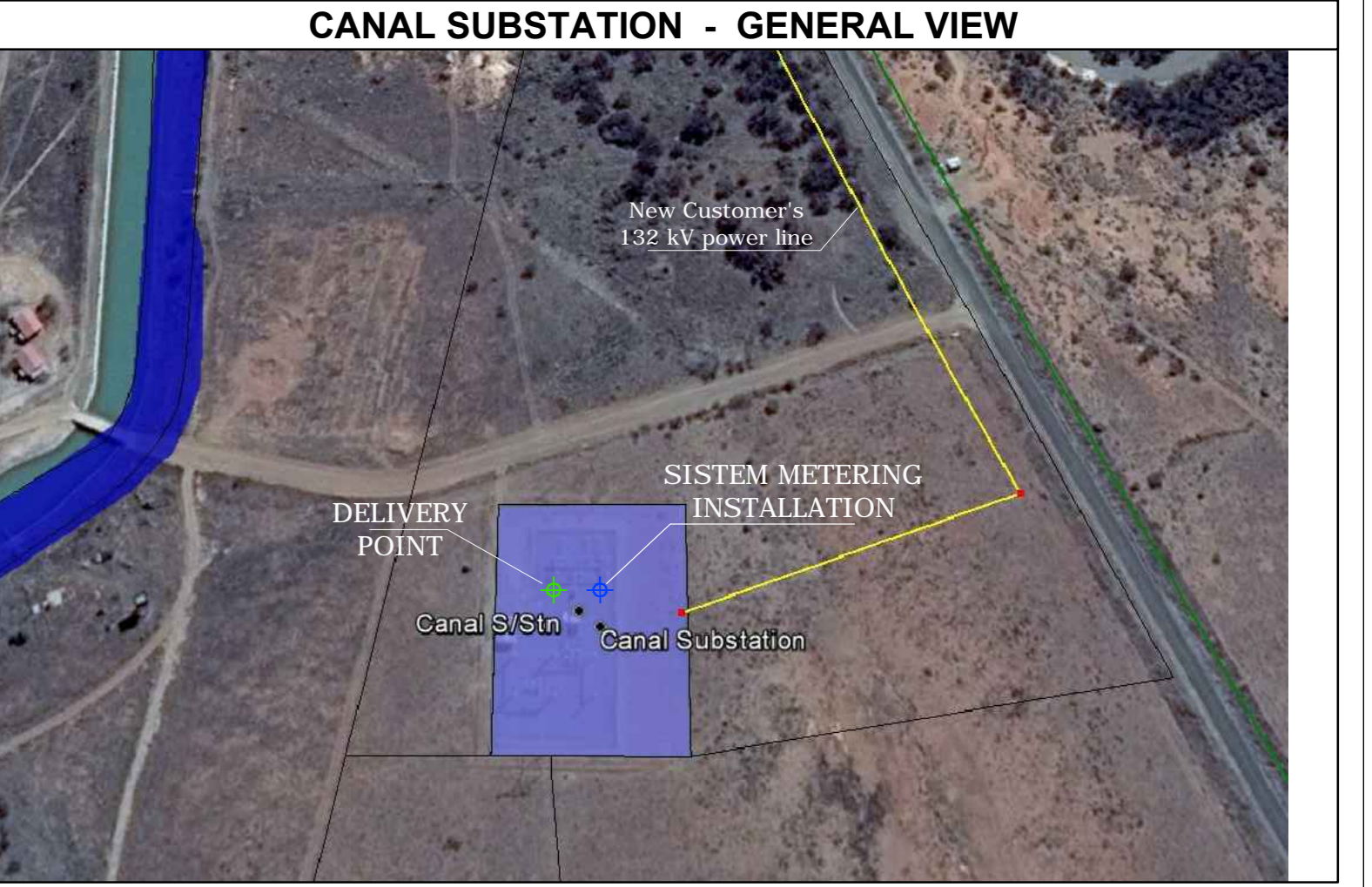
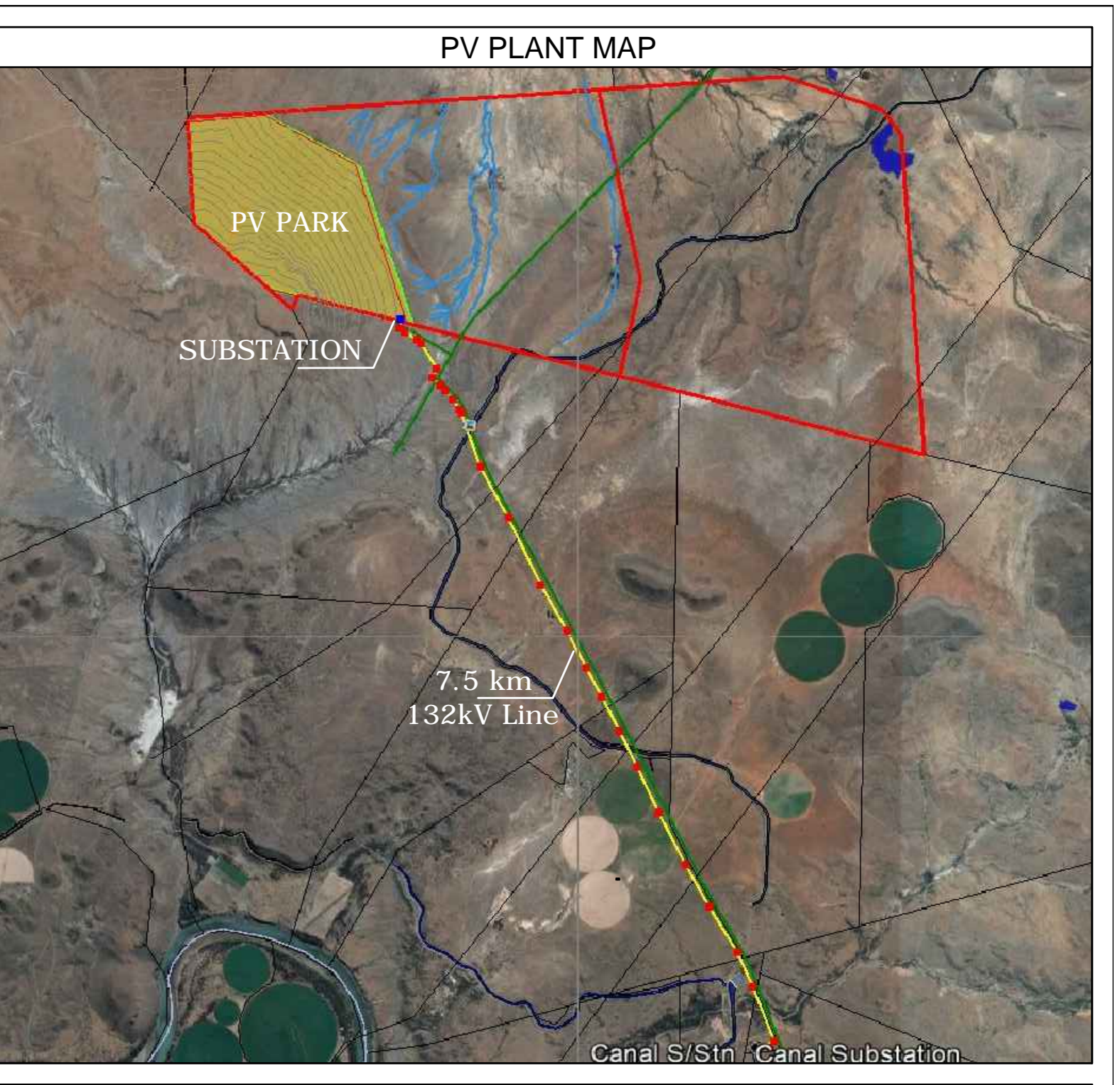


GROOTPOORT SOLAR PARK		KEY		GEO - GRAPHICAL COORDINATES			LEGAL DESCRIPTION			
NUMBER MODULE: 273,780 STRING: 30 MODULES NUMBER STRING: 9,126 DC POWER [kWp]: 86,240.70 AC POWER [kW]: 75,000 N. CONVERSION CABINET: 17 FACILITY FENCED AREA: 160.5 Hectares INTERNAL ROAD: 20,000 sqm		INVERTER CABINET INTERNAL ROADS ACCESS ROADS PERIMETER FENCES PV TABLES (3 x 15 MODULES) FIREBREAK > 6 m		SUBSTATION PROJECT SITE BOUNDARIES		Eskom 765 kV power line and servitude 132 kV Power Line (monopole) Existing Erosion Channel			SYSTEM MEETING INSTALLATION DELIVERY POINT FACILITY MEETING INSTALLATION ACCESS POINT	
				CORNER P01:ES P02:ES P03:ES P04:ES P05:ES P06:ES P07:ES			Cadastral Plot Name: Portion ... of the Farm No., Local Municipality District Municipality Province LPI code:			



Terni Energia S.p.A. Strada dello Stabilimento 1 05035 Narni (TR)		EPC contractor												
Solar PV Plant 75 MW "GROOTPOORT SOLAR PARK" Tracker-Polycrystalline 1500Vdc pitch 5m														
<table border="1"> <thead> <tr> <th>Review Date</th> <th>Review Description</th> <th>Designed</th> <th>Verified</th> <th>Approved</th> </tr> </thead> <tbody> <tr> <td>March/2016</td> <td>00 - ISSUING PRELIMINARY PROJECT</td> <td>M. Mantovani</td> <td>M. Mantovani</td> <td></td> </tr> </tbody> </table>	Review Date	Review Description	Designed	Verified	Approved	March/2016	00 - ISSUING PRELIMINARY PROJECT	M. Mantovani	M. Mantovani		SCALE: various DATE: March/2016 FORMAT: A0			DRAWING: 1/1 DESCRIPTION: SCALE DRAWING OF THE FACILITY
Review Date	Review Description	Designed	Verified	Approved										
March/2016	00 - ISSUING PRELIMINARY PROJECT	M. Mantovani	M. Mantovani											
PELE GREEN ENERGY		Pele Green Energy 3 Centex Close, Brooklyn Place, Eastgate Kramerville, Sandton												