

Figure 2: 2016 Environmental sensitivity map submitted as part of the EIA, of the project study area illustrating ecologically sensitive areas in relation to the gas to power plant as well as protected plant species. Please note this map has been updated in 2020 (refer Figure 5).

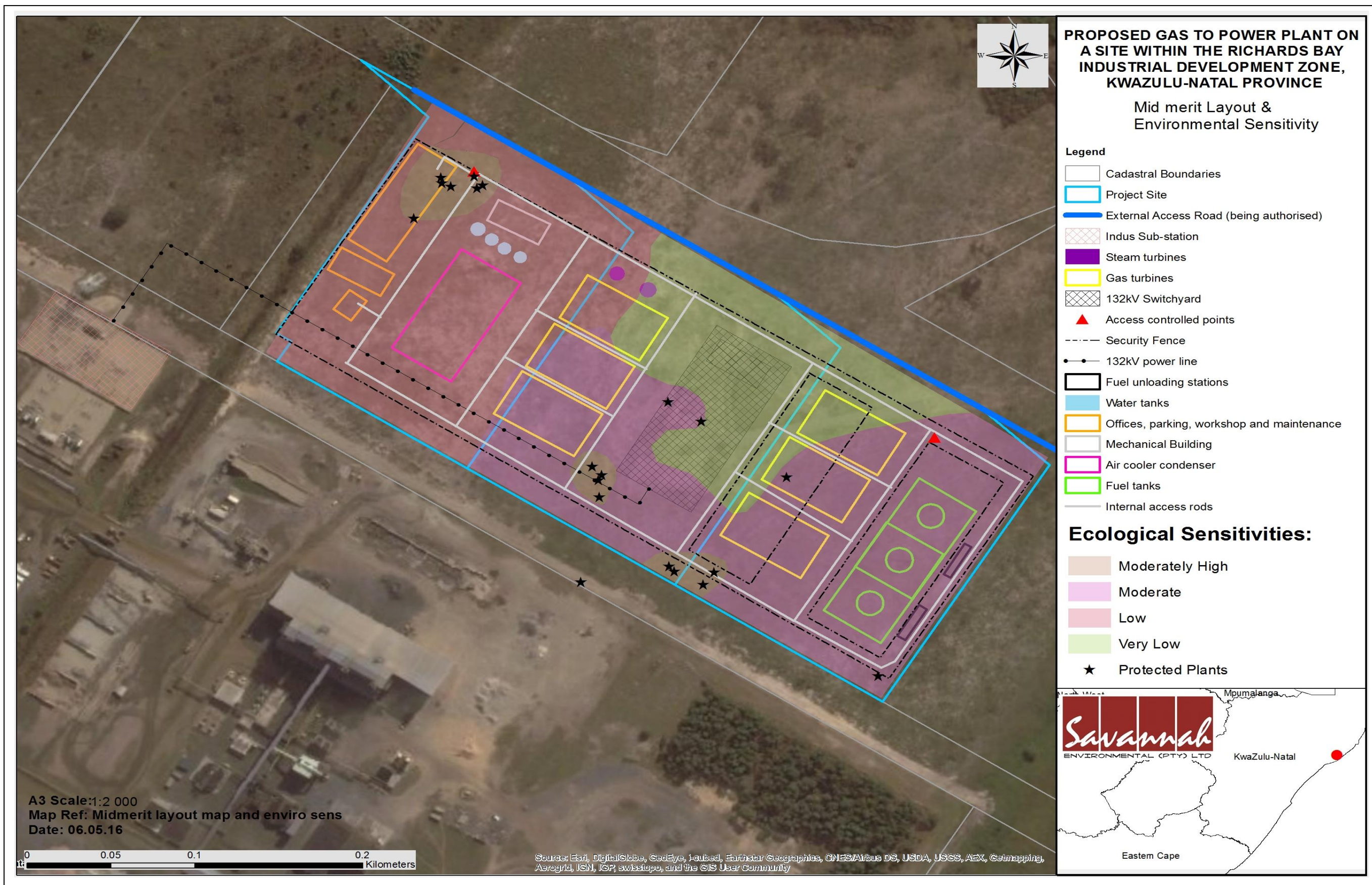


Figure 3: 2016 Environmental sensitivity map for the project study area illustrating ecologically sensitive areas in relation to the gas to power plant as well as protected plant species at mid-merit operational design. Please note this map has been updated in 2020 (refer Figure 4).

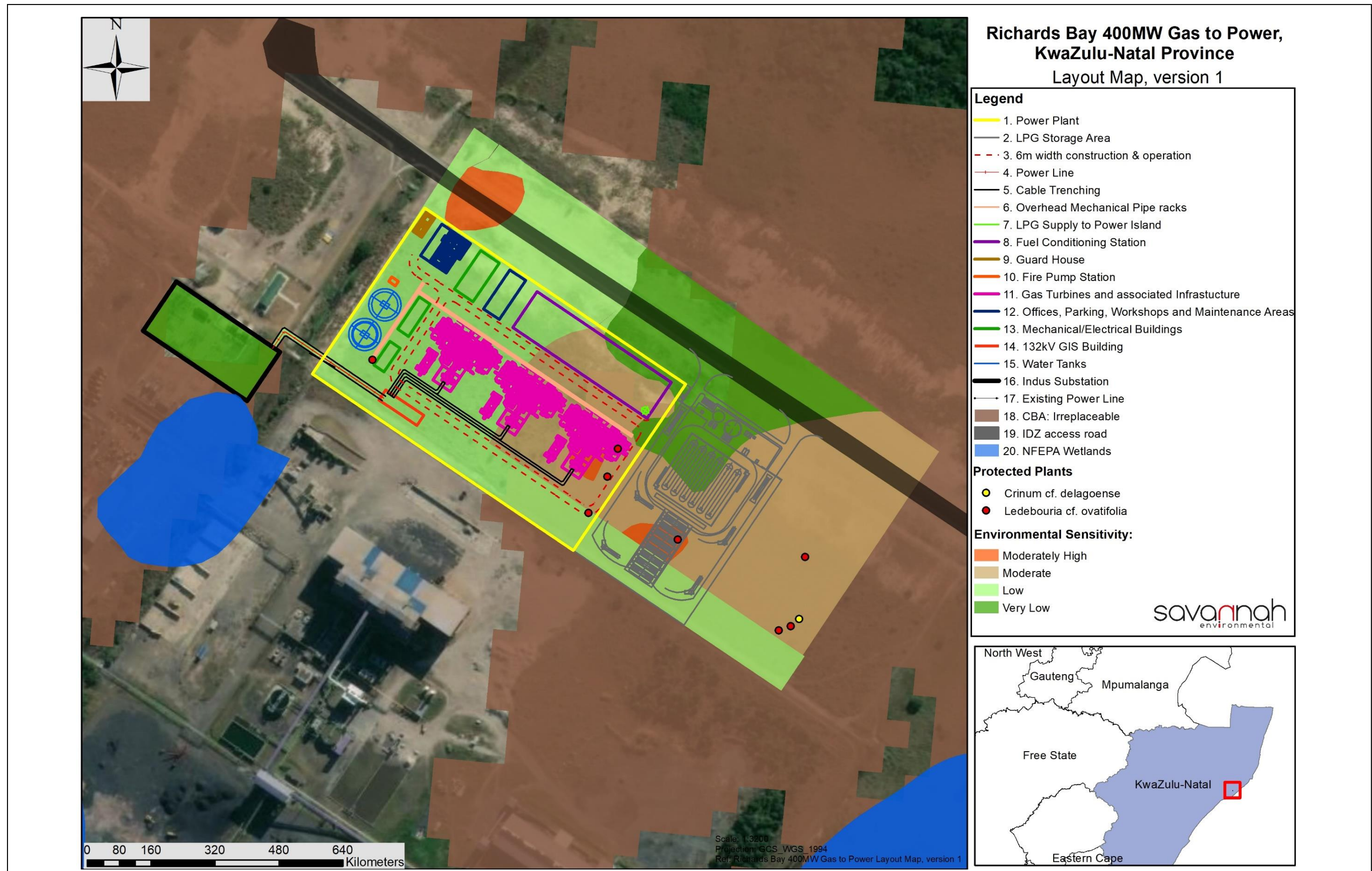


Figure 4: Updated Environmental sensitivity map (Version 1, 2020) for the project study area illustrating ecologically sensitive areas in relation to the gas to power plant layout.