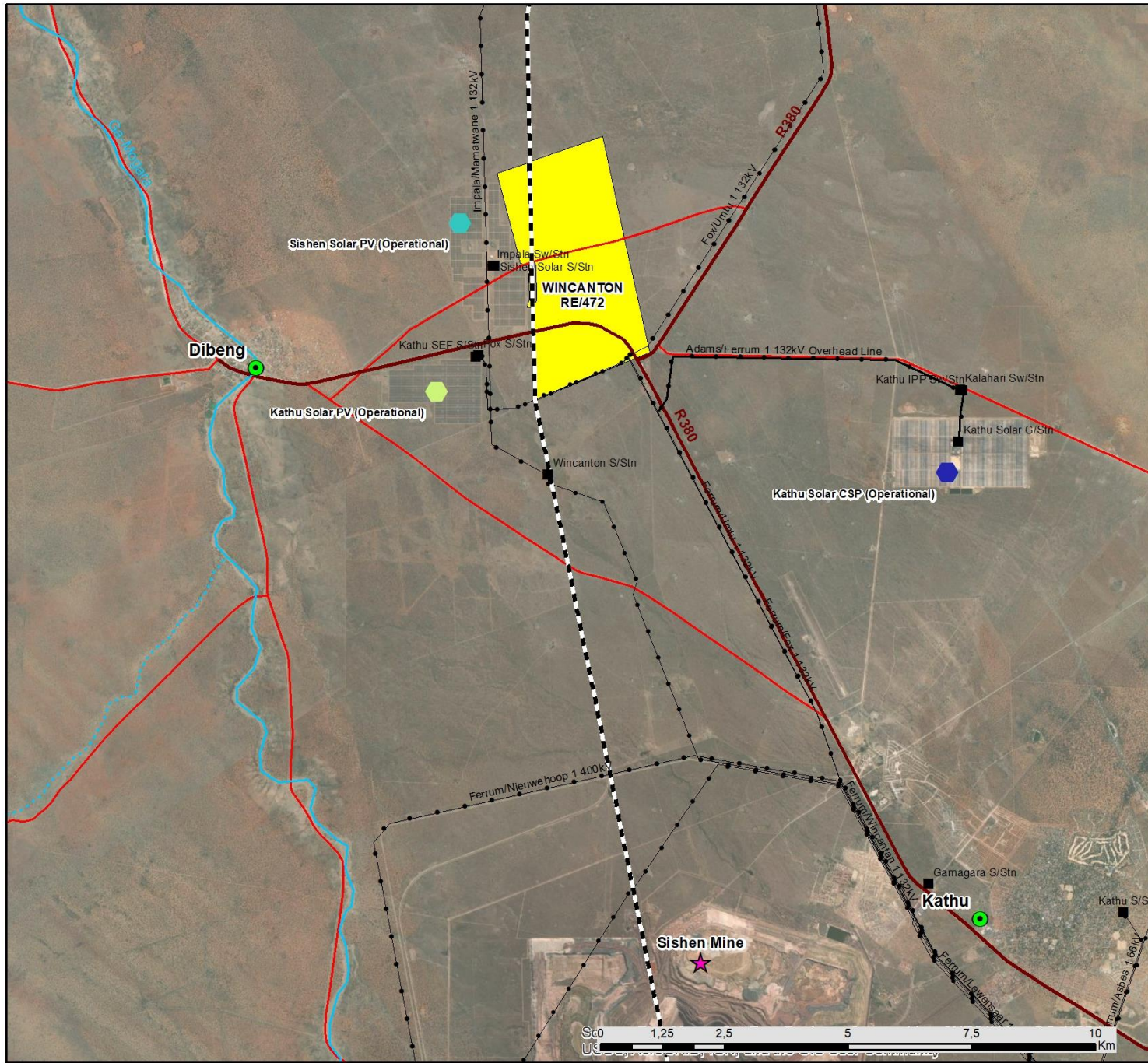


# San Solar PV Facility Northern Cape

## Locality Map

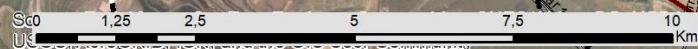
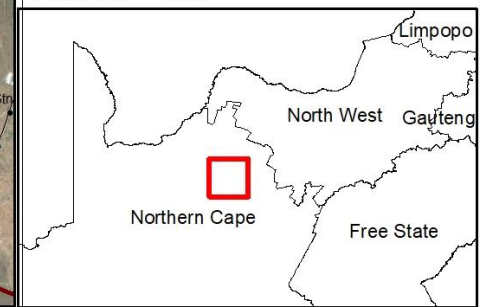
### Legend

-  Town
-  Sishen Mine
-  Existing Substation
-  Kathu Solar CSP (Operational)
-  Kathu Solar PV (Operational)
-  Sishen Solar PV (Operational)
-  Railway Line
-  Existing Power Line
-  Perennial River
-  Non-perennial River
-  Regional Road
-  Main Road
-  Project Site



Scale: 1: 101 000  
 Projection: LO23  
 Ref: San Solar PV - Locality

savannah  
 environmental

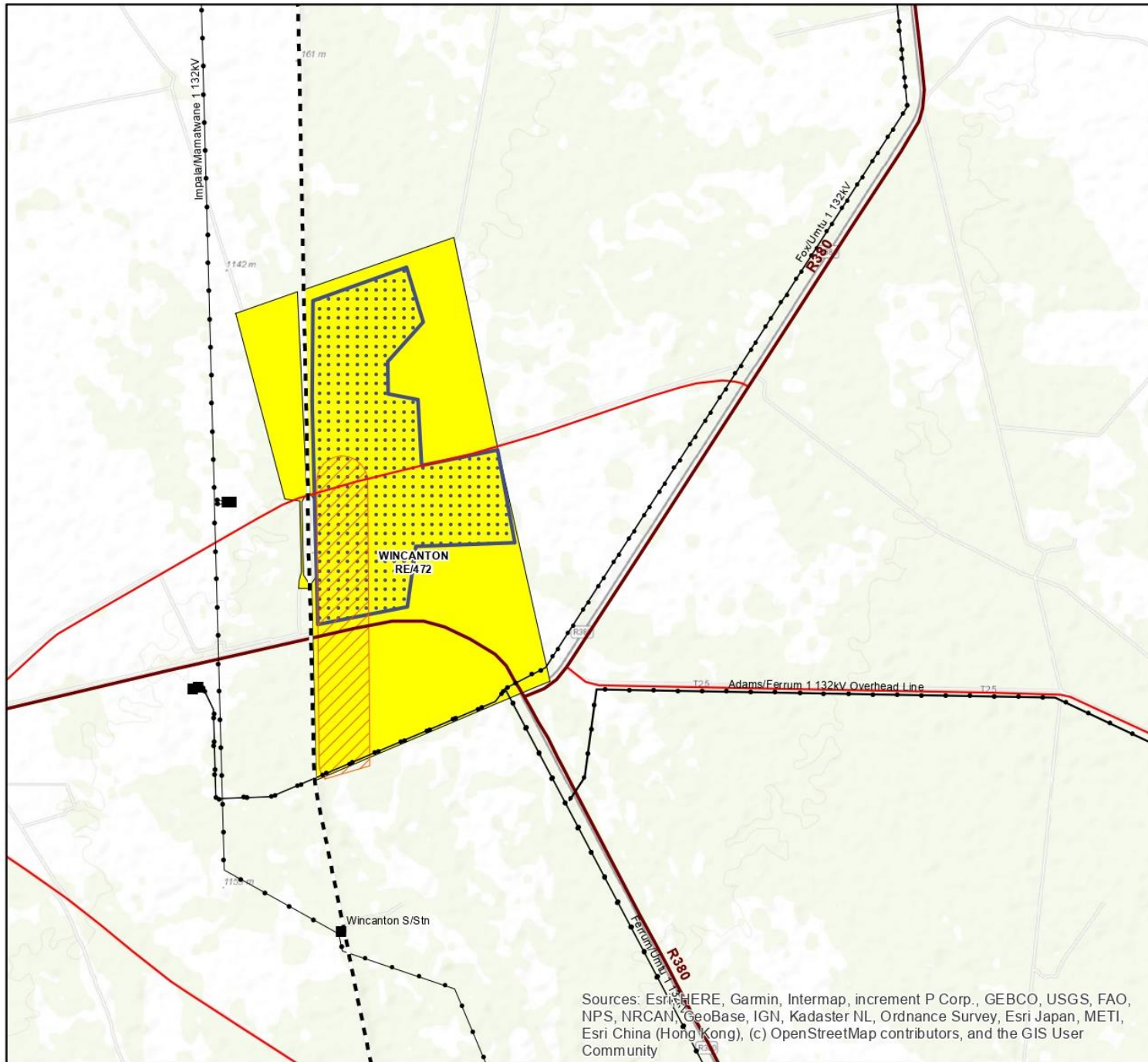


# San Solar PV Facility Northern Cape

## Development Area Map

### Legend

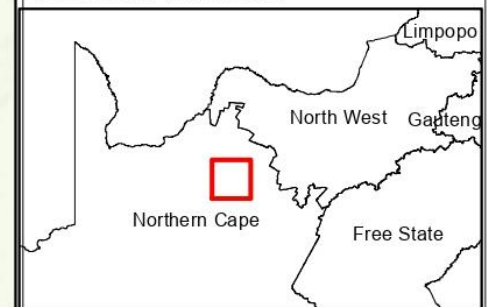
- Existing Substation
- - - Railway Line
- Existing Power Line
- Perennial River
- · - · Non-perennial River
- Regional Road
- Main Road
- Project Site
- ▨ Grid Connection Corridor (500m wide)
- ▤ Development Area (400ha)

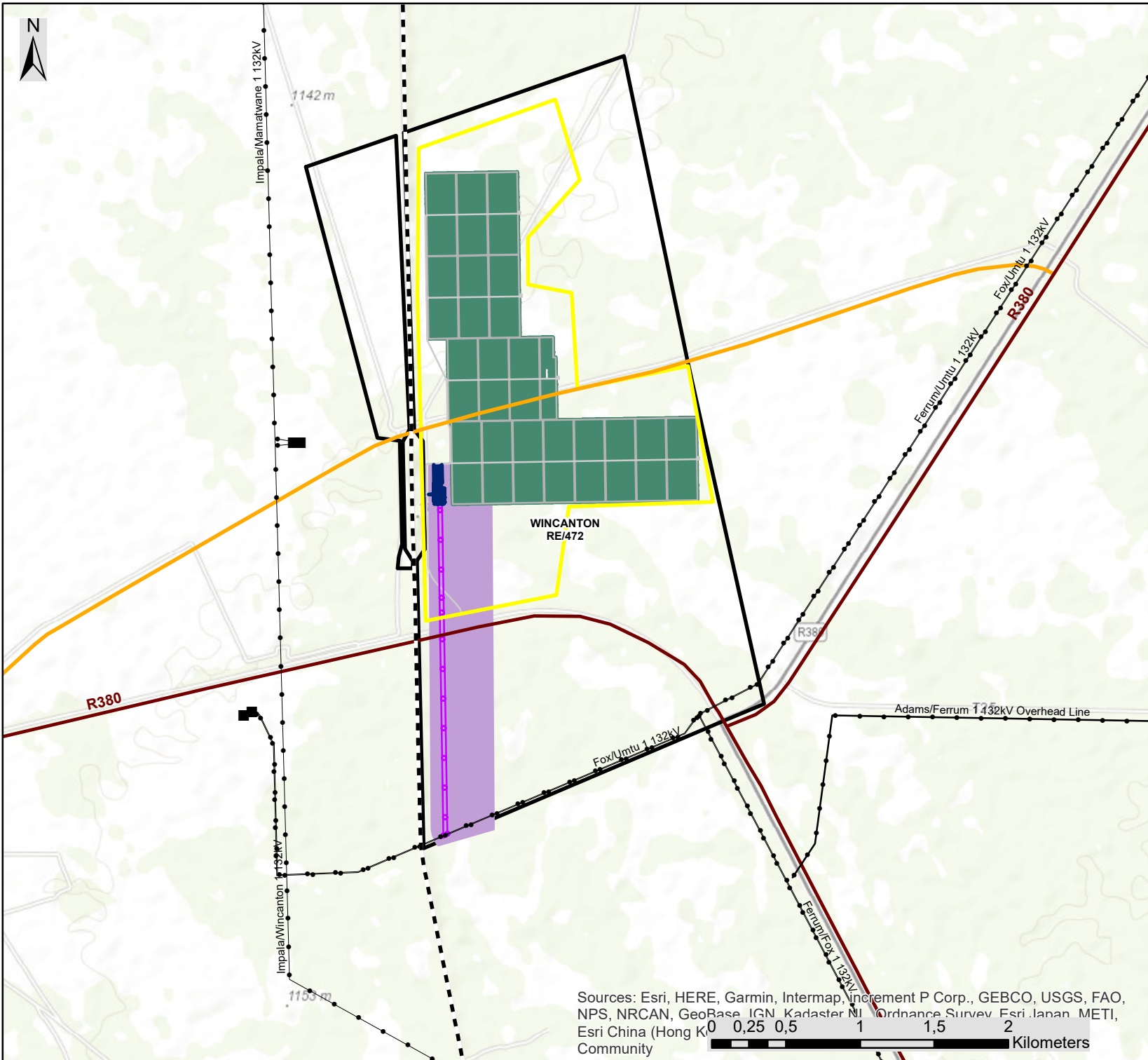


Sources: Esri, HERE, Garmin, Intermap, increment P Corp., GEBCO, USGS, FAO, NPS, NRCAN, GeoBase, IGN, Kadaster NL, Ordnance Survey, Esri Japan, METI, Esri China (Hong Kong), (c) OpenStreetMap contributors, and the GIS User Community

savannah  
environmental

Scale: 1: 50 000  
Projection: LO23  
Ref: San Solar PV - Development area





Sources: Esri, HERE, Garmin, Intermap, increment P Corp., GEBCO, USGS, FAO, NPS, NRCAN, GeoBase, IGN, Kadaster NL, Ordnance Survey, Esri Japan, METI, Esri China (Hong Kong)  
0 0,25 0,5 1 1,5 2 Kilometers

# San Solar PV Facility Northern Cape

Facility Layout Map

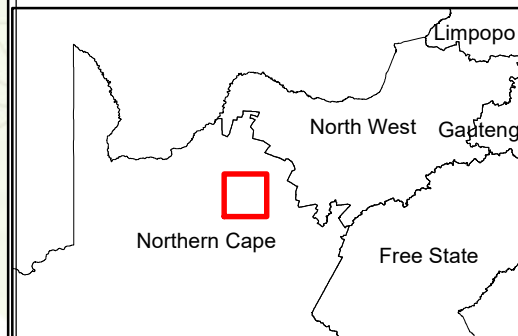
## Legend

- Existing Substation
- - - Railway Line
- Existing Power Line
- Perennial River
- · - · Non-perennial River
- Regional Road
- Private Road (Closed)
- Development Area (400ha)
- Project Site

## Facility Layout

- Facility substation, BESS, and O&M Hub
- Loop-in-Loop out grid connection infrastructure
- Internal Road (incl. MV Cabling)
- PV Array
- Grid Connection Corridor (500m wide)

Scale: 1: 35 000  
Projection: LO23  
Ref: San Solar PV - Layout Map



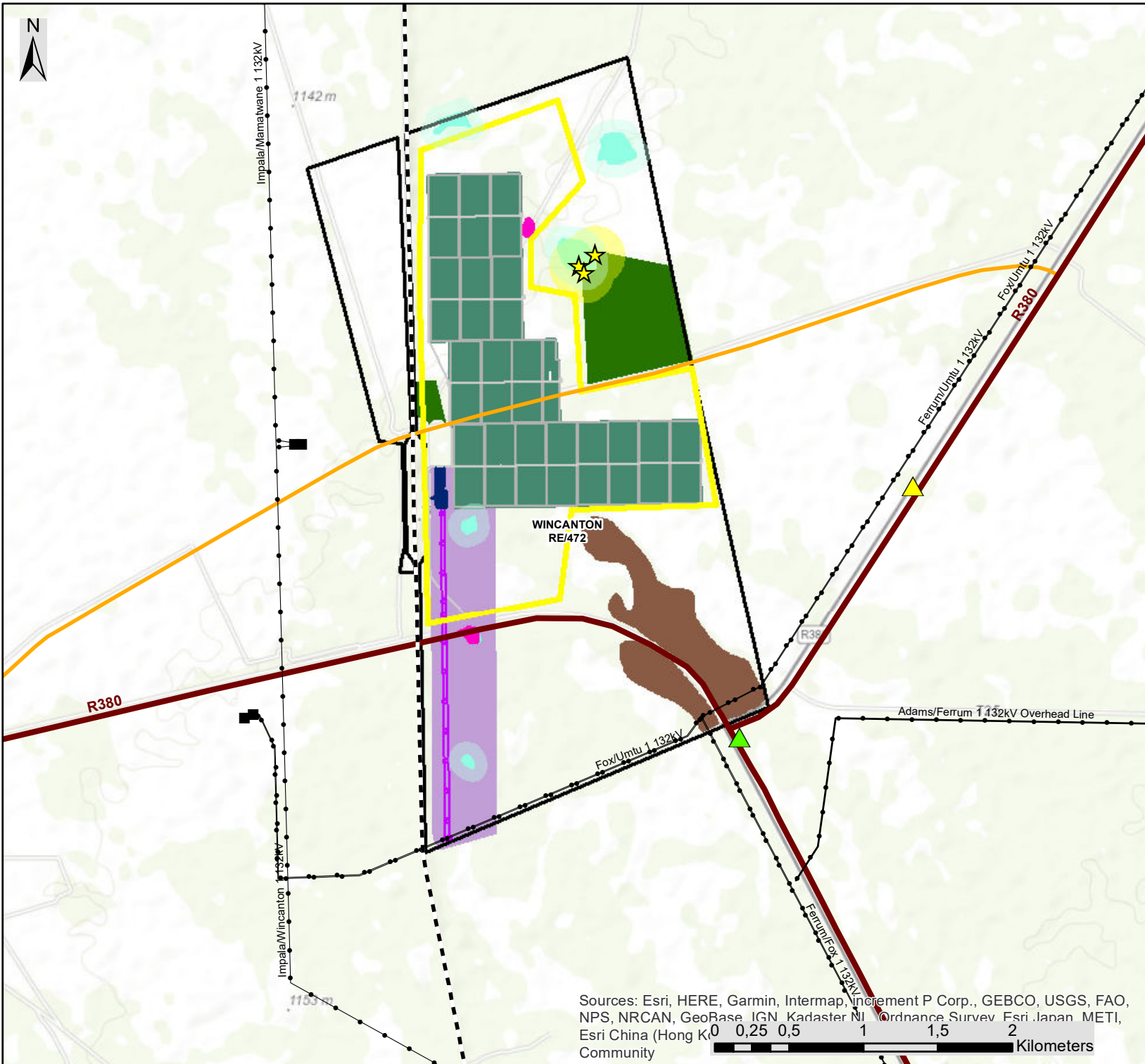


# San Solar PV Facility Northern Cape

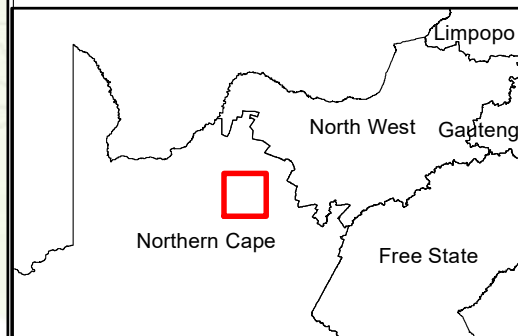
## Facility Layout & Sensitivity Map

### Legend

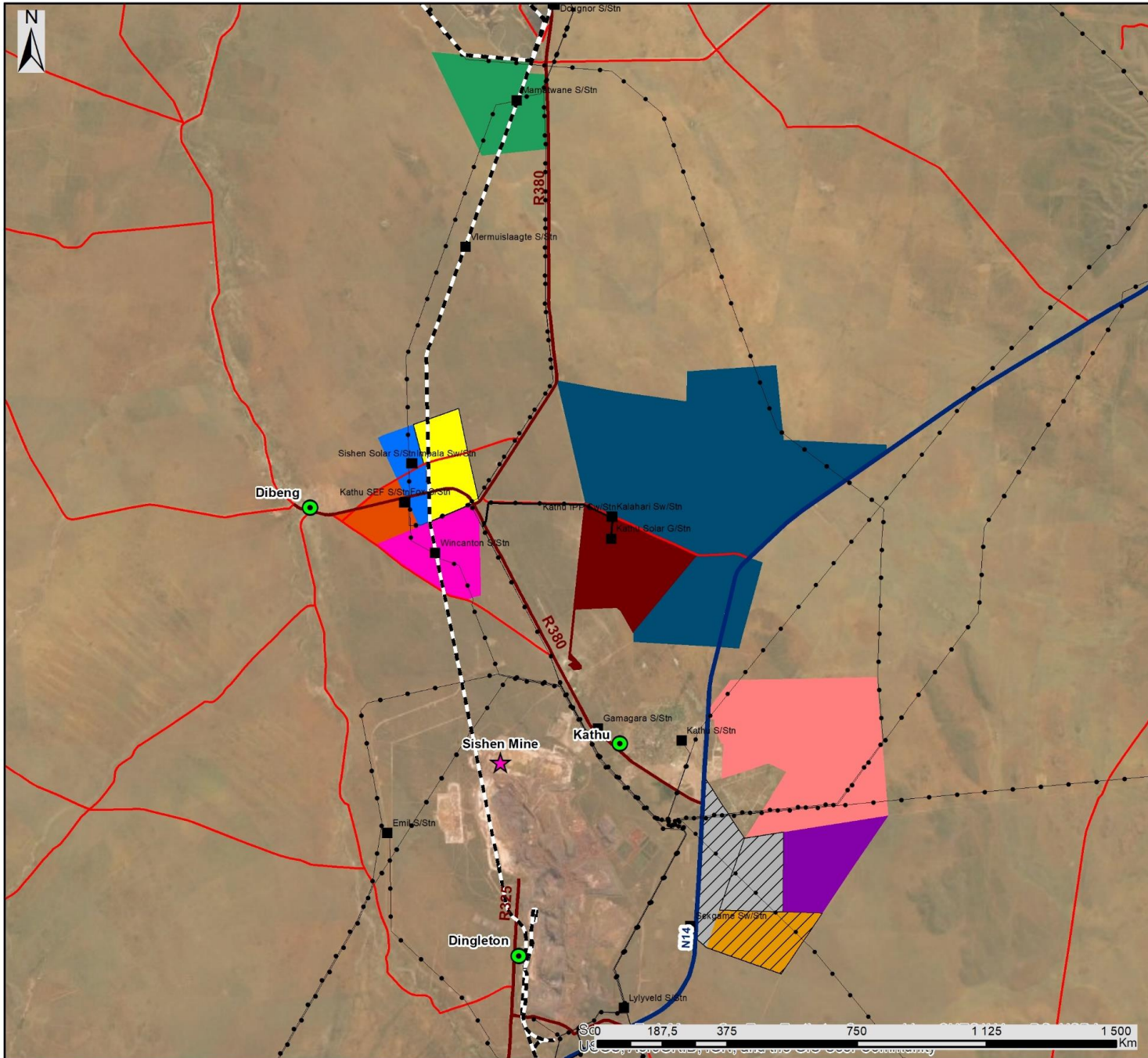
- Haakboskern Homestead and Restaurant
  - Stokkiesdraai Gueshouse
  - Existing Substation
  - Railway Line
  - Existing Power Line
  - Perennial River
  - Non-perennial River
  - Regional Road
  - Private Road (Closed)
  - Development Area (400ha)
  - Project Site
- ### Facility Layout
- Facility substation, BESS, and O&M Hub
  - Loop-in-Loop out grid connection infrastructure
  - Internal Road (incl. MV Cabling)
  - PV Array
  - Grid Connection Corridor (500m wide)
- ### Environmental Sensitivities
- Heritage site (High Archaeology Sensitivity)
  - Pan Buffer (200m)
  - Heritage Site Buffer (200m)
  - Artificial Watering Point Incl. Buffer (High Avifauna Sensitivity)
  - Open Kathu Bushveld (High Avifauna Sensitivity)
  - Deep Sands (High Ecological Sensitivity)
  - Pan (Very High Ecological Sensitivity & High Avifauna Sensitivity)



Scale: 1: 35 000  
 Projection: LQ23  
 Ref: San Solar PV - Layout & Sensitivity Map



Sources: Esri, HERE, Garmin, Intermap, increment P Corp., GEBCO, USGS, FAO, NPS, NRCAN, GeoBase, IGN, Kadaster NL, Ordnance Survey, Esri, Japan, METI, Esri China (Hong Kong), Swisstopo, Mapbox, CNES, Swire, NITRS, GEBCO, China, IGN, Met, Esri, Swisstopo  
 0 0,25 0,5 1 1,5 2 Kilometers



# San Solar PV Facility Northern Cape

## Cumulative Map

### Legend

- Sishen Mine
- Existing Substation
- Town
- Railway Line
- Existing Power Line
- National Route
- Regional Road
- Main Road
- Project Site

### Other known Renewable Energy Facilities (based on affected property):

- Kathu Solar PV (Operational)
- Sishen Solar PV (Operational)
- Kathu Solar CSP (Operational)
- Boitshoko Solar PV (Authorised)
- AEP Kathu Solar PV (Authorised)
- Mogara Solar PV (Authorised)
- Bestwood Solar PV (Authorised)
- Hyperion Solar PV Cluster (Authorised)
- Shirley Solar Park (Authorised)
- AEP Legoko Solar PV (Authorised)
- AEP Mogobe Solar PV (Authorised)

Scale: 1:250 000  
 Projection: LOZ3  
 Ref: San Solar PV - Locality

savannah  
 environmental

