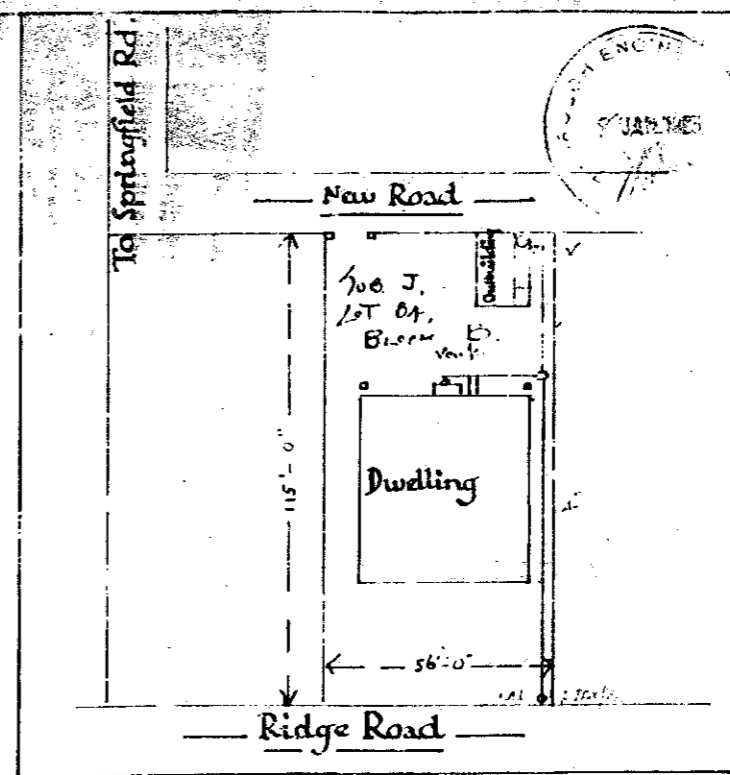
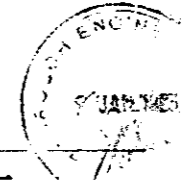


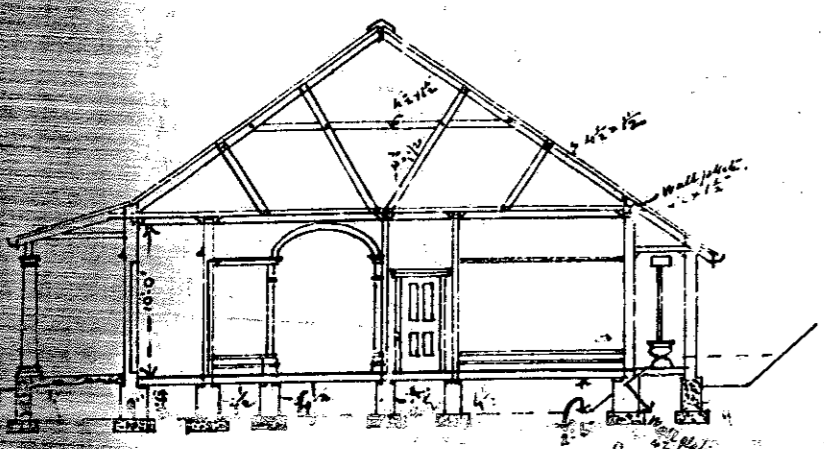
Proposed Dwelling off Springfield Road, Durban

for J. Turner, Port Elizabeth. Scale 1 inch = 8 feet.

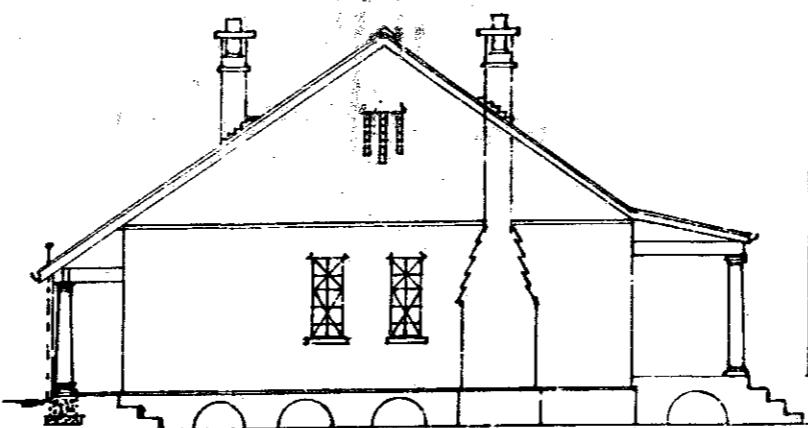


Block Plan

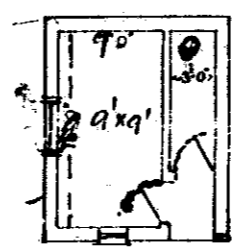
Scale 1 inch = 20 feet.



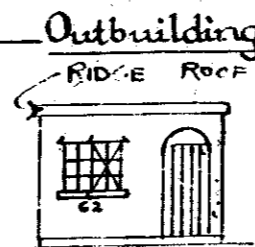
Section A.A.



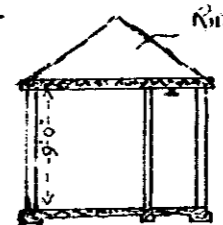
End Elevation



Plan

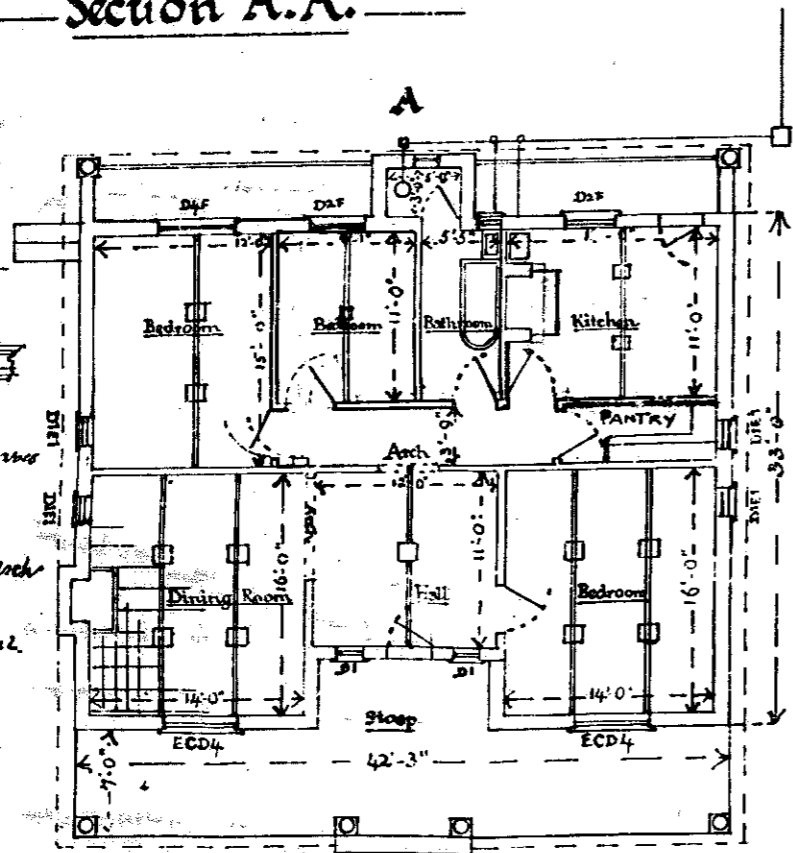


Elevation

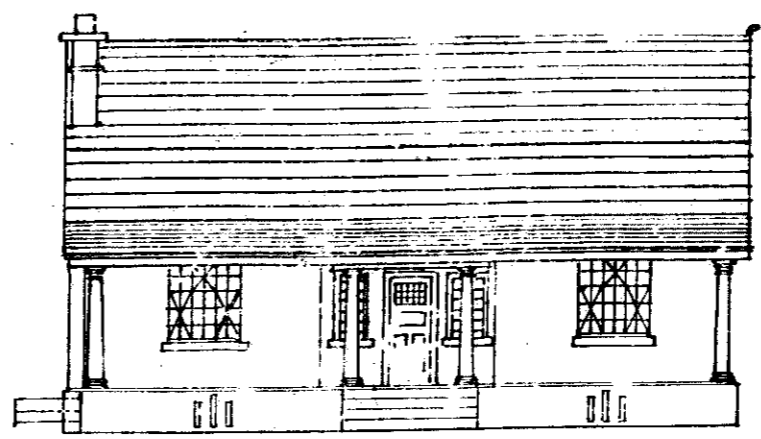
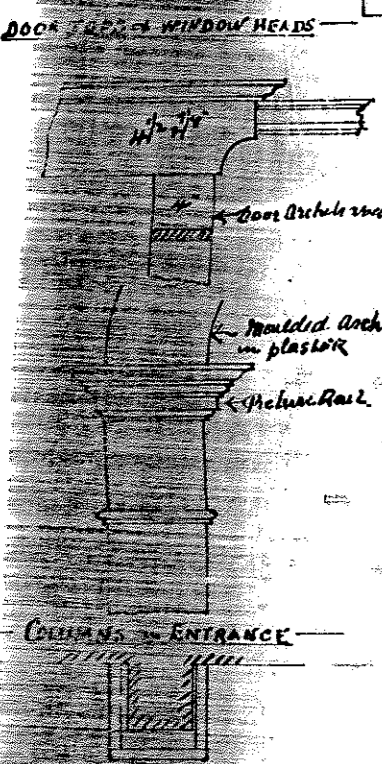


Section

Outbuildings



Plan



Front Elevation

Outbuildings to have a side roof of mud on road.

MURDOCH OF DURBAN APPROVED 14. 1. 1924

Scale 1/2" = 1 foot