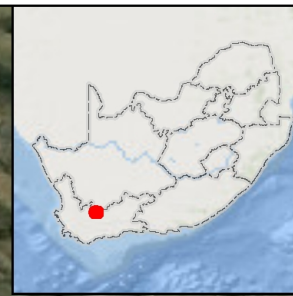


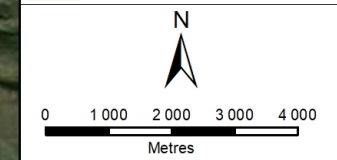
KARREEBOSCH WIND FARM (RF) (PTY) LTD

WEF SENSITIVITY



Legend

- Noise Sensitivity Receptors
- Heritage Locations
- ▲ Eagle Nest
- - - Avifauna Sensitivity
- NSA (500m buffer)
- ▭ Visual Proximity To Receptors
- Freshwater Sensitivity**
- Artificial Impoundments
- River System
- - - 32 m Zone of Regulation (NEMA)
- - - GN509 Zone of Regulation
- Ecological & Bat Sensitivity**
- High
- Moderate
- Low



DISCLAIMER
 The information on this figure was derived from various digital databases available to WSP Environmental (Pty) Ltd. All information is provided "as is" and it must be acknowledged that data, information, and maps are dynamic and in a constant state of maintenance, correction and update. WSP Environmental (Pty) Ltd cannot accept any responsibility for errors, omissions, or positional accuracy where it has not been directly responsible for the production of the data referenced. There are no warranties, expressed or implied, as to the use of this information, including the warranty of merchantability or fitness for a particular purpose. Notification of any errors will be appreciated.



WSP ENVIRONMENTAL (PTY) LTD
 BUILDING C, KINGHITSBROEGE,
 33 SLAANE STREET, BRYANSTON,
 P.O. BOX 9887, SLAANE PARK, 2152, RSA.
 Tel +27 (0)11 361 1360, Fax +27 (0)11 361 1361, wsp@wspgroup.co.za

DATA SOURCE:
 SERVICE LAYER CREDITS: SOURCE: ESRI, MAXAR, EARTHSTAR GEOGRAPHICS, AND THE GIS USER COMMUNITY
 ESRI, GARMIN, GEBCO, NOAA NGDC, AND OTHER

PROJECTION: Hartbeeshoek94 Lo21

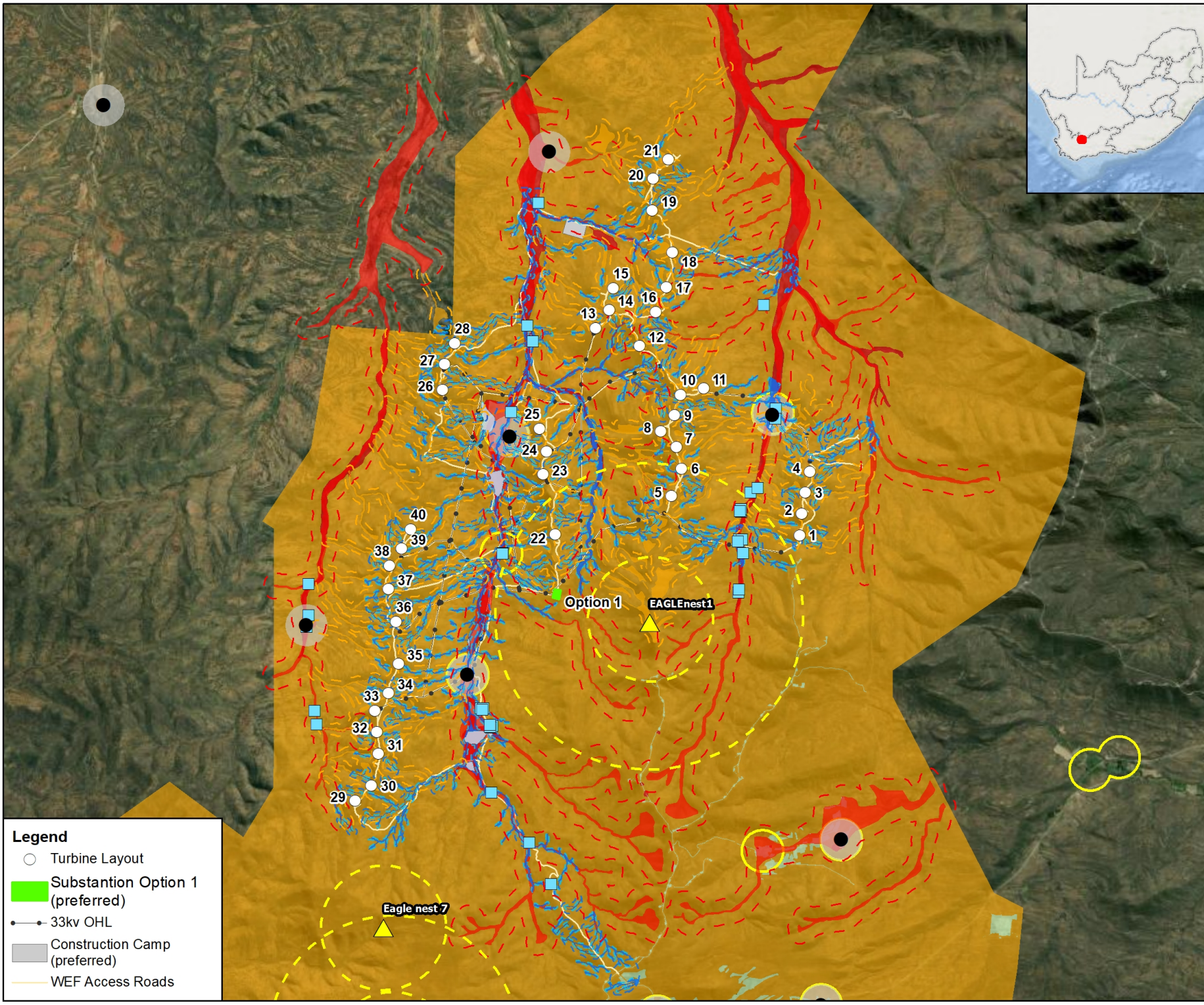
PROJECT TITLE:
 KARREEBOSCH WEF Part 2 & BAR

SCALE: 1:120 000 DRAWN BY: TS

DATE: 2022/10/13 REVIEWED BY: AS

FIGURE NO: PROJECT NO: 41103843 REV:

© COPYRIGHT RESERVED
 The content of this document is privileged and confidential and may not be disclosed or reproduced without the express authorisation of the author, being "WSP Environmental (Pty) Ltd"



- Legend**
- Turbine Layout
 - Substation Option 1 (preferred)
 - 33kv OHL
 - Construction Camp (preferred)
 - WEF Access Roads