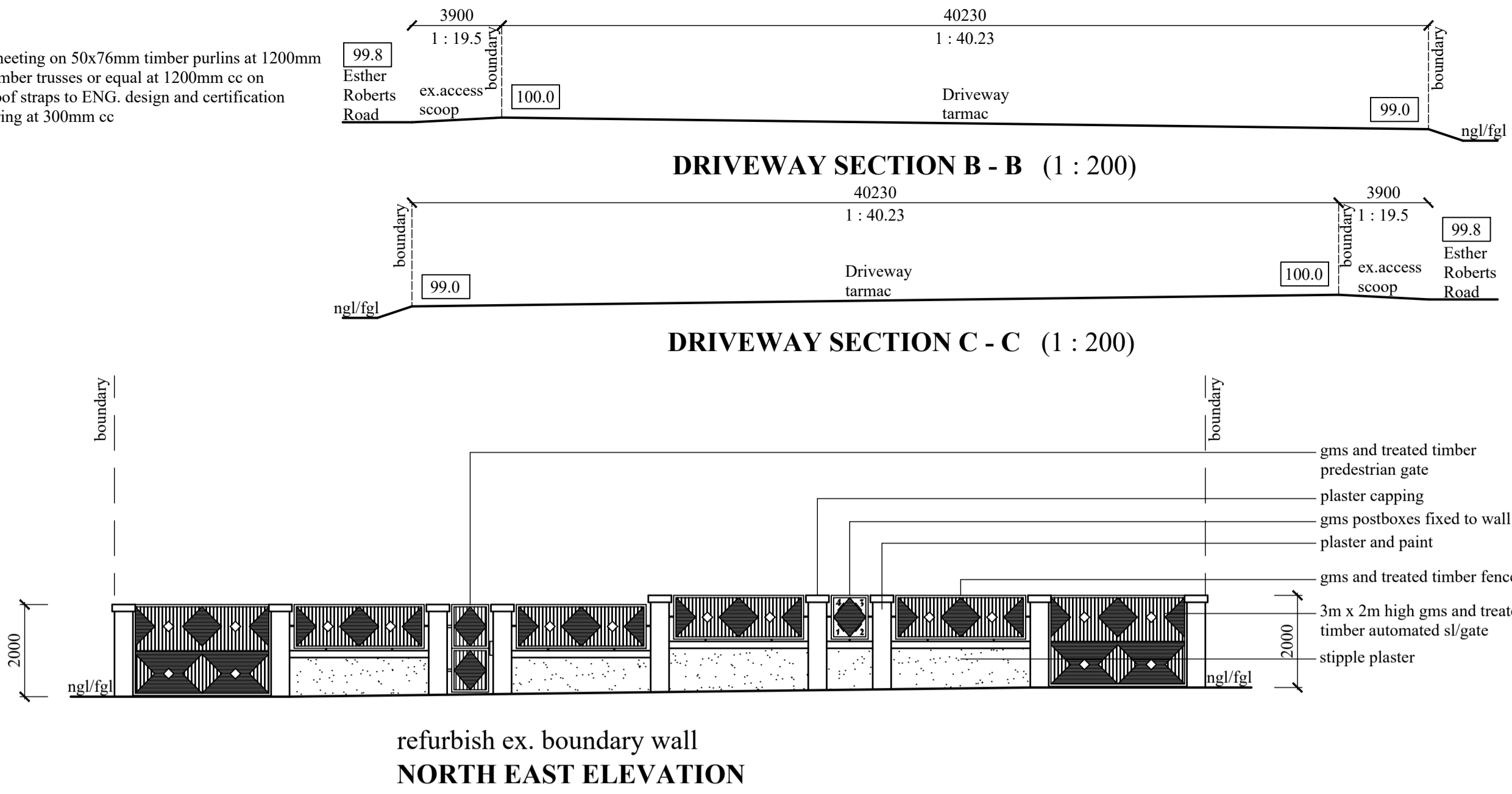


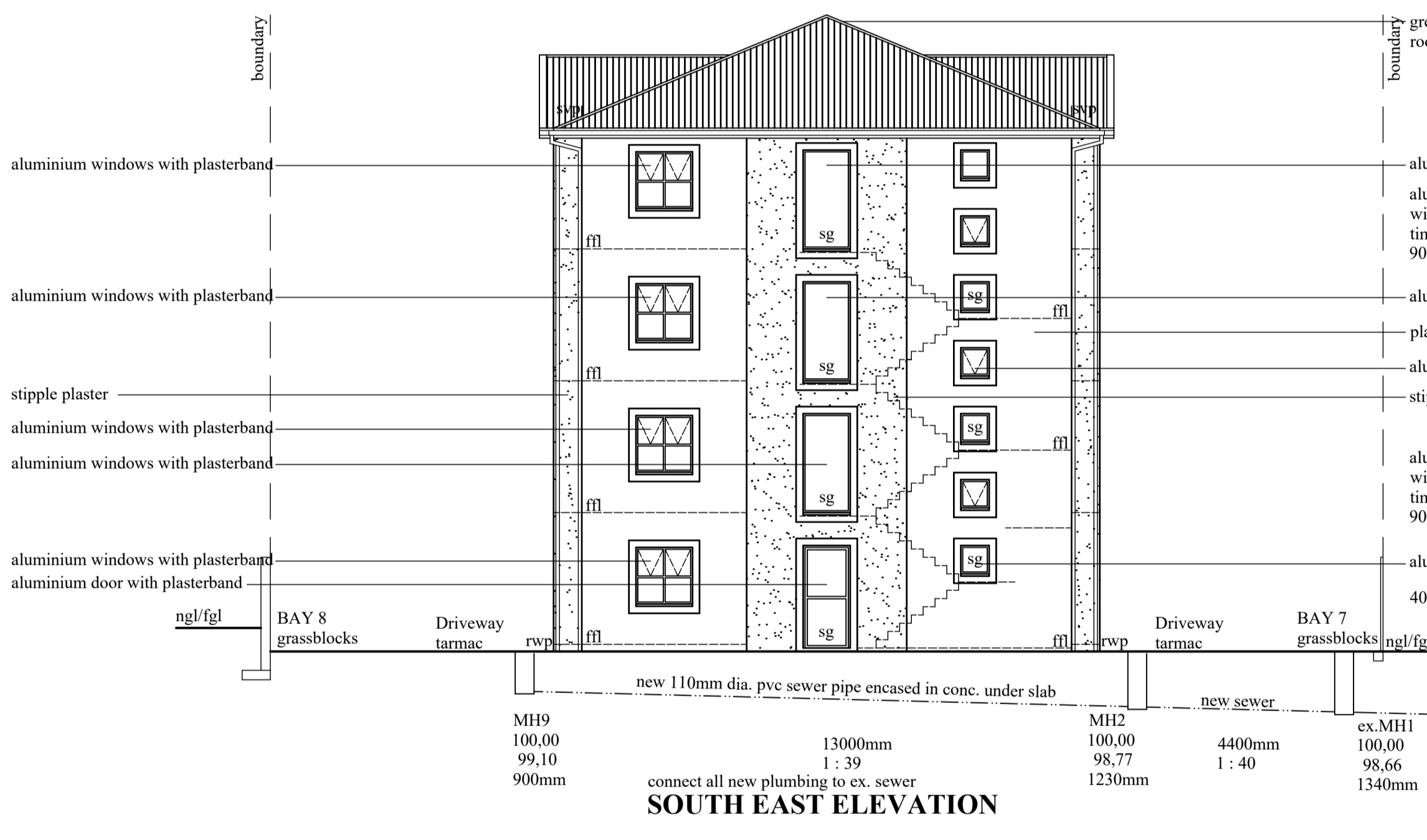
ROOF NOTES:
 roof pitch: 22.5°
 grey factory painted 's-profile' aluminium roof sheeting on 50x76mm timber purlins at 1200mm cc on SABS approved underlay on ganged timber trusses or equal at 1200mm cc on 114x38mm timber wallplate secured with gms roof straps to ENG. design and certification rhinoboard ceilings on 38x38mm timber bracing at 300mm cc uPVC gutters/ bargeboards/ fascias/ rwdps



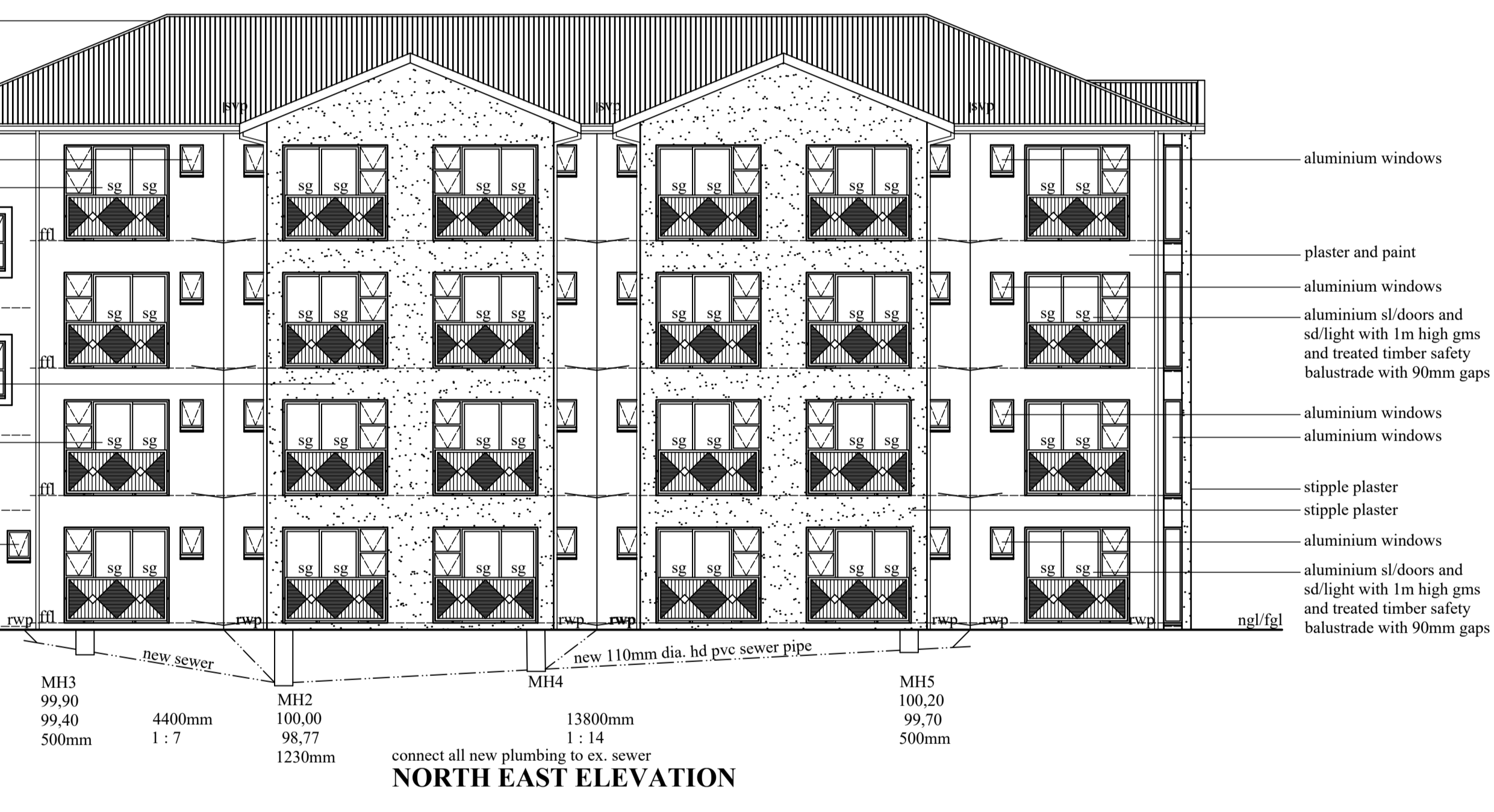
FLOOR NOTES:
 110mm thick brc mesh rc surface bed on dpm on well compacted, consolidated & certified poisoned soil

SECTION A - A

refurbish ex. boundary wall
 NORTH EAST ELEVATION



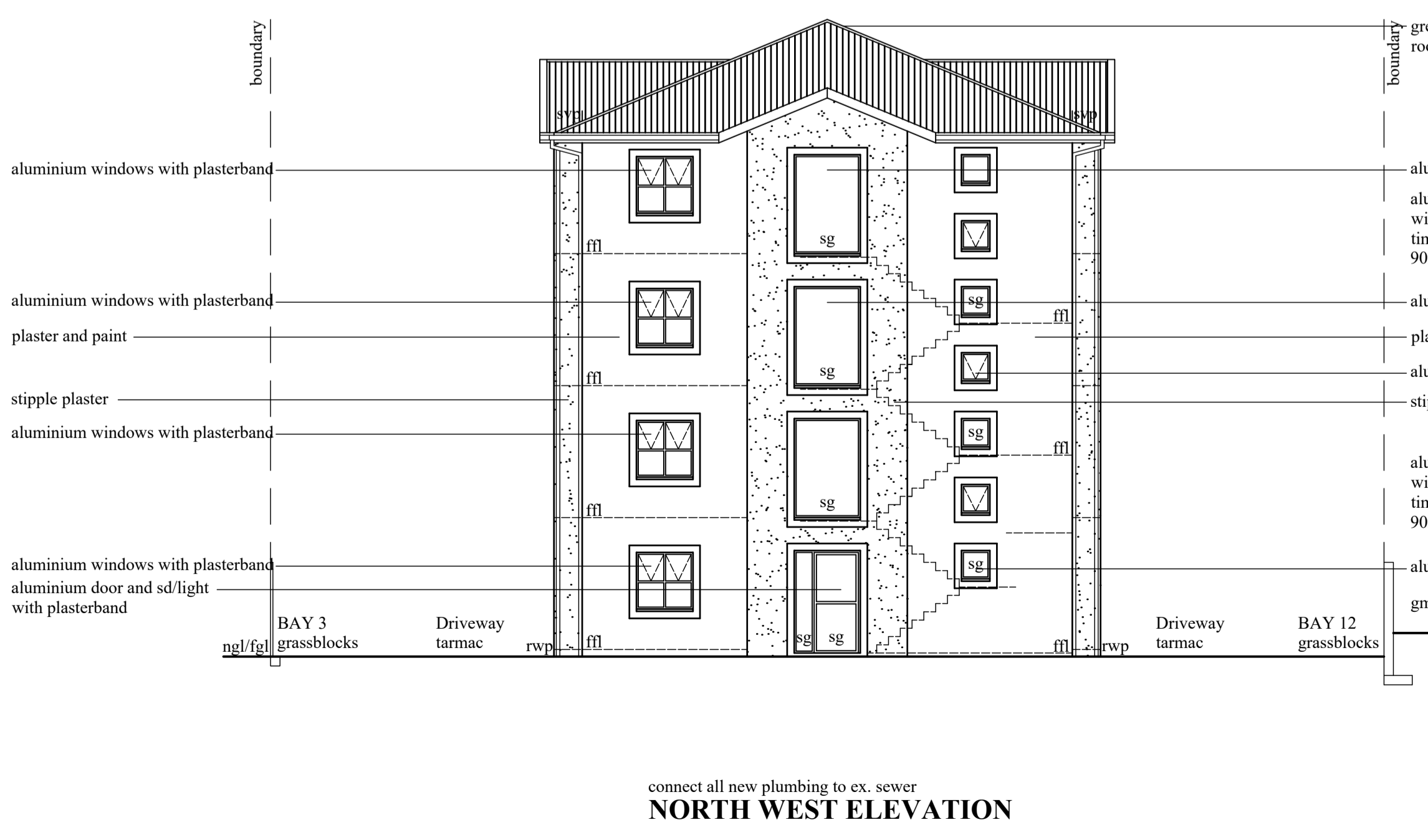
grey 's-profile' aluminium roofing
 aluminium windows
 aluminium s/d/doors and sd/light with 1m high gms and treated timber safety balustrade with 90mm gaps
 plaster and paint
 aluminium windows with plasterband
 stipple plaster
 aluminium s/d/doors and sd/light with 1m high gms and treated timber safety balustrade with 90mm gaps
 aluminium windows
 40mm hw door



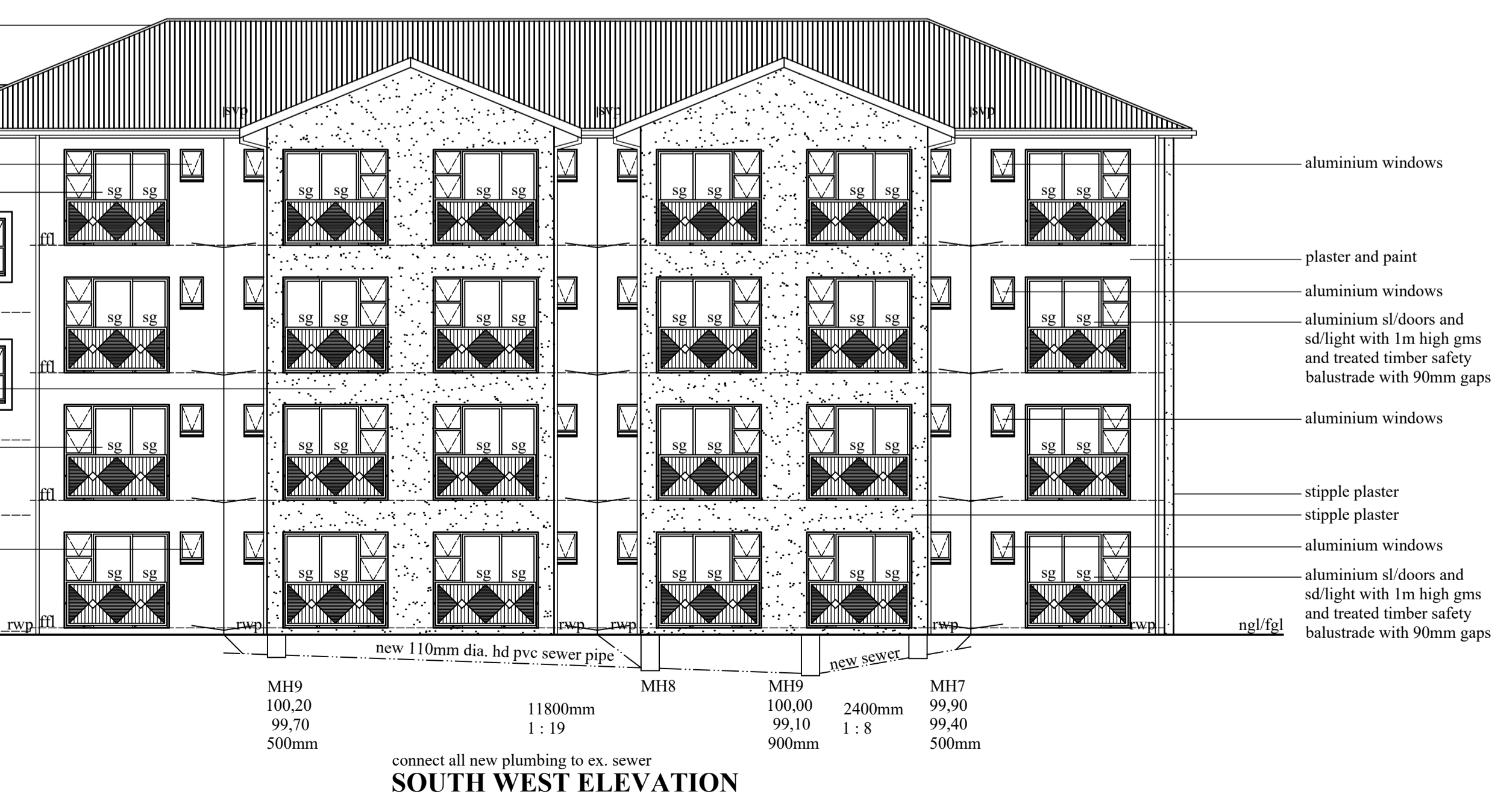
aluminium windows
 plaster and paint
 aluminium windows
 aluminium s/d/doors and sd/light with 1m high gms and treated timber safety balustrade with 90mm gaps
 aluminium windows
 aluminium windows
 stipple plaster
 stipple plaster
 aluminium windows
 aluminium s/d/doors and sd/light with 1m high gms and treated timber safety balustrade with 90mm gaps

SOUTH EAST ELEVATION

NORTH EAST ELEVATION



grey 's-profile' aluminium roofing
 aluminium windows
 aluminium s/d/doors and sd/light with 1m high gms and treated timber safety balustrade with 90mm gaps
 plaster and paint
 aluminium windows
 plaster and paint
 aluminium windows with plasterband
 stipple plaster
 aluminium s/d/doors and sd/light with 1m high gms and treated timber safety balustrade with 90mm gaps
 aluminium windows
 gms meter room door



aluminium windows
 plaster and paint
 aluminium windows
 aluminium s/d/doors and sd/light with 1m high gms and treated timber safety balustrade with 90mm gaps
 aluminium windows
 stipple plaster
 stipple plaster
 aluminium windows
 aluminium s/d/doors and sd/light with 1m high gms and treated timber safety balustrade with 90mm gaps

NORTH WEST ELEVATION

SOUTH WEST ELEVATION

TOTAL AREA - 1114,64 - sqm

OWNERS SIGNATURE: *[Signature]* 071 868 3494 CONTACT NO.

RATE NO. 1082 8028/000 -1082 9038/000

PROPOSED NEW RESIDENTIAL ACCOMMODATION AT 182-184 ESTHER ROBERTS ROAD ON ERF 7145 and 7146 DURBAN FOR SNOWDEEP PROPERTIES

GRAHAM BRAUM
 Architectural Designer
 Pr.S.Arch.T
 Reg. No. ST0010
 360 Umbilo Road Tel: 031-2054142
 Durban Cell: 082 454 0441
 4001
 gpbdesigners@gmail.com

SCALE 1 : 100 / 1 : 200
 CHECKED G. P. BRAUM
 DRAWN M. R. AZMUTH
 DATE APRIL 2023
 DRAWING NO. : 6598/ 20/ 2 of 3