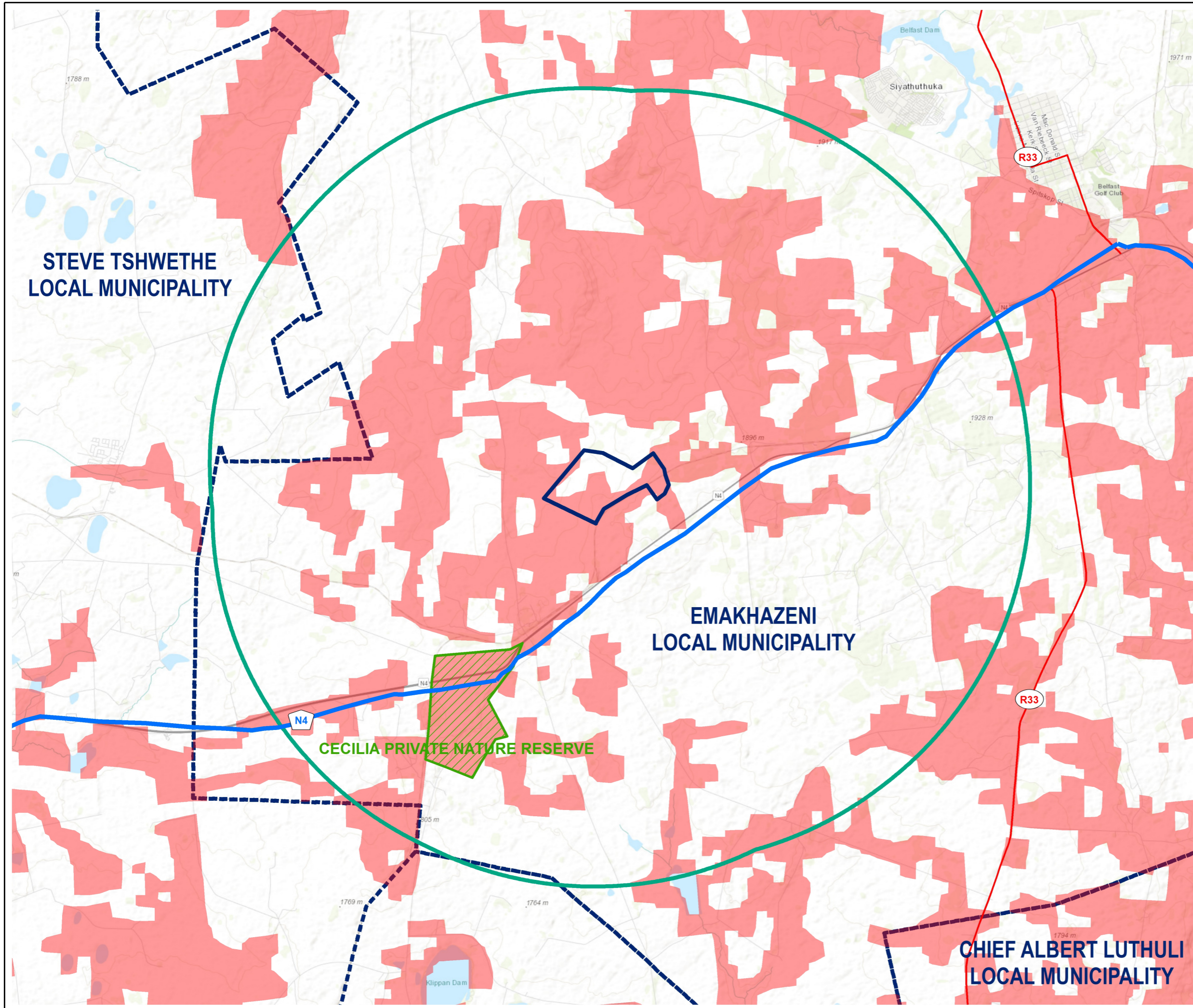


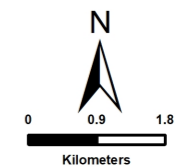
PROPOSED CONSTRUCTION OF THE ROOS PV FACILITY WITHIN EMAKHAZENI LOCAL MUNICIPALITY, MPUMALANGA PROVINCE PROTECTED AREAS

Legend

- Arterial Routes
- National Routes
- Local Municipal Boundaries
- Protected Areas
- NPAES: Priority Focus Area
- Roos PV Facility Application Site
- 10km Radius



Source:
 NGI, 2014
 DFFE, 2022
 MUNICIPAL DEMARICATION BOARD, 2016



ENVIRONMENTAL DIVISION
 4 PENCARROW CRESCENT
 LA LUCIA RIDGE OFFICE ESTATE
 UMHLANGA ROCKS
 4320
 Phone: +27 31 581 1500
 Fax: +27 31 581 2371
 e-mail: info@sivest.co.za

Project No 18456	Prepared By SB	Date 01/08/2023
Map Ref No 18456	Revision 0	Date

"COPYRIGHT IS VESTED IN SIVEST IN TERMS OF THE COPYRIGHT ACT (ACT 98 OF 1978) AND NO USE OR REPRODUCTION OR DUPLICATION THEREOF MAY OCCUR WITHOUT THE WRITTEN CONSENT OF THE AUTHOR"

THIS MAP HAS BEEN PREPARED UNDER THE CONTROLS ESTABLISHED BY THE SIVEST QUALITY MANAGEMENT SYSTEM WHICH HAS BEEN CERTIFIED ISO 9001:2015 COMPLIANT