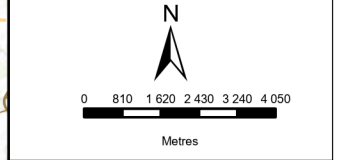


Camden Renewable Energy Complex

LOCALITY MAP

Legend

- + Towns
 - Turbine Locations
 - Eskom Substation
 - Existing Eskom Grid
 - Up to 400kV grid connection Alternatives
 - CD I WEF up to 132kV powerline alternatives
 - CD II WEF up to 132kV powerline alternatives
 - ▭ Camden I WEF
 - Camden I Solar PV site extent (100MW)
 - ▭ Eskom Collector & Switching SS Alternatives
 - ▭ Ammonia & Hydrogen Plant Alternatives
 - ▭ Camden II WEF
- Roads**
- National freeway
 - Arterial road
 - Main road
 - Secondary road
 - Street
 - Other
 - Internal Roads



DISCLAIMER
 The information on this figure was derived from various digital databases available to WSP Environmental (Pty) Ltd. All information is provided "as is" and it must be acknowledged that data, information, and maps are dynamic and in a constant state of maintenance, correction and update. WSP Environmental (Pty) Ltd cannot accept any responsibility for errors, omissions, or positional accuracy where it has not been directly responsible for the production of the data referenced. There are no warranties, expressed or implied, as to the use of the information, including the warranty of merchantability or fitness for a particular purpose. Notification of any errors will be appreciated.

wsp

WSP ENVIRONMENTAL (PTY) LTD
 BUILDING C, KNIGHTSBRIDGE,
 33 SLOANE STREET, BRYANSTON
 P O BOX 98867, SLOANE PARK 2152, RSA
 Tel +27 (0)11 361 1360, Fax +27 (0)11 361 1361, wsp@wspgroup.co.za

DATA SOURCE:
 Service Layer Credits: World Ocean Base: Esri, GEBCO, Delorme, NaturalVue
 World Topographic Map: Esri South Africa, Esri, HERE, Garmin,

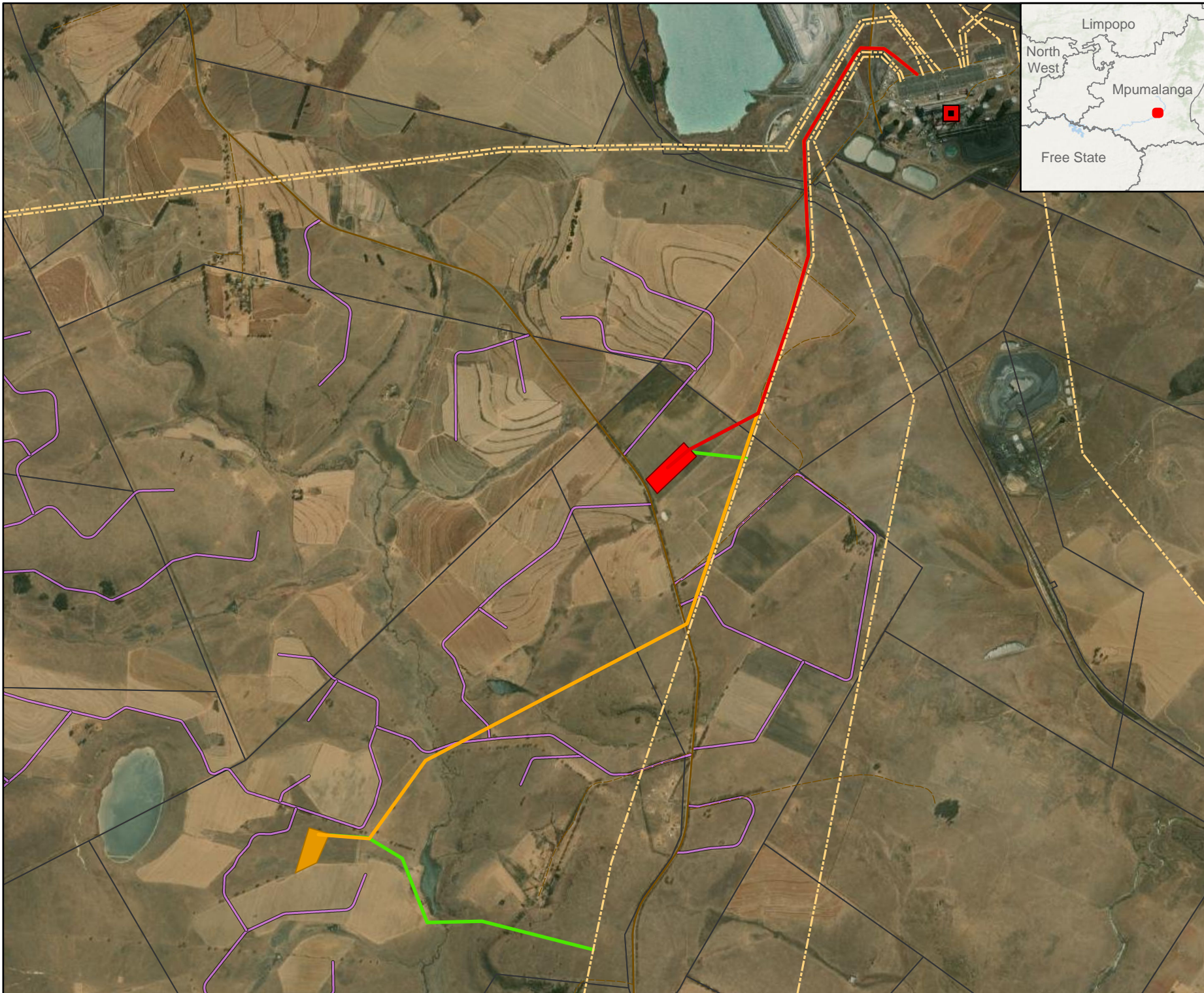
COORDINATE SYSTEM:

PROJECT TITLE:
 CAMDEN RENEWABLE ENERGY COMPLEX

SCALE: 1:160 000 **DRAWN BY:** TS
DATE: 2022/08/15 **REVIEWED BY:** AS

FIGURE NO.: **PROJECT NO.:** 41103247 **REV.:**

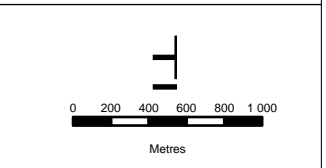
© COPYRIGHT RESERVED
 The content of this document is privileged and confidential and may not be disclosed or reproduced without the express authorisation of the author, being "WSP Environmental (Pty) Ltd"



Grid Connection and Collector substation

INFRASTRUCTURE LAYOUT

- Legend**
- Eskom Substation
 - Existing Eskom Grid
 - Farm Portions
 - Eskom up to 400kV OHL Alt2 (Preferred)
 - Eskom Collector & Switching SS Alt2 (5ha)(Preferred)
 - Eskom up to 400kV OHL Alt1
 - Eskom Collector & Switching SS Alt 1 (5ha)
 - Eskom up to 400kV LILO grid alternatives
 - Roads**
 - Secondary road
 - Other
 - Internal Roads



DISCLAIMER

The information on this figure was derived from various digital databases available to WSP Environmental (Pty) Ltd. All information is provided "as is" and it must be acknowledged that data, information, and maps are dynamic, and in a constant state of maintenance, correction and update. WSP Environmental (Pty) Ltd cannot accept any responsibility for errors, omissions, or positional accuracy where it has not been directly responsible for the production of the data referenced. There are no warranties, expressed or implied, as to the use of this information, including the warranty of merchantability or fitness for a particular purpose. Notification of any errors will be appreciated.

wsp

WSP ENVIRONMENTAL (PTY) LTD
 BUILDING C, KNIGHTSBURG
 33 SLOANE STREET, BRYANSTON
 P O BOX 99867, SLOANE PARK 2152, RSA
 Tel +27 (0)11 361 1360, Fax +27 (0)11 361 1361, wsp@wspgroup.co.za

DATA SOURCE:
 Service Layer Credits: World Ocean Base: Esri, GEBCO, DeLorme, NaturalVue
 World Imagery: Maxar

COORDINATE SYSTEM:

PROJECT TITLE:
 CAMDEN RENEWABLE ENERGY COMPLEX

SCALE: DRAWN BY: TS

DATE: 2022/08/12 **REVIEWED BY:** AS

FIGURE NO: PROJECT NO: 41103247 **REV:**

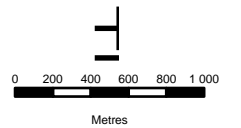
© COPYRIGHT RESERVED
The content of this document is privileged and confidential and may not be disclosed or reproduced without the express authorisation of the author, being "WSP Environmental (Pty) Ltd"

Grid Connection and Collector substation

SENSITIVITY MAP

Legend

- Infrastructure
- Infrastructure Heritage
- Burial Site
- Structure
- Bats - Sensitivities**
 - Medium
 - High
- Avifauna**
 - High Sensitivity Grassland
 - High Sensitivity Pans
 - Very High Sensitivity Wetlands
- Mpumalanga Biodiversity Sector Plan (2019)**
 - PA National Parks & Nature Reserves
 - CBA Irreplaceable
 - CBA Optimal
 - ESA Local corridor
 - ESA Protected Area buffer
 - Other Natural Areas
 - Moderately modified- Old lands
 - Heavily modified
- Roads**
 - Secondary road
 - Other



DISCLAIMER

The information on this figure was derived from various digital databases available to WSP Environmental (Pty) Ltd. All information is provided "as is" and it must be acknowledged that data, information, and maps are dynamic, and in a constant state of maintenance, correction and update. WSP Environmental (Pty) Ltd cannot accept any responsibility for errors, omissions, or positional accuracy where it has not been directly responsible for the production of the data referenced. There are no warranties, expressed or implied, as to the use of this information, including the warranty of merchantability or fitness for a particular purpose. Notification of any errors will be appreciated.



WSP ENVIRONMENTAL (PTY) LTD
 BUILDING C, KNIGHTSBARGE,
 33 SLOANE STREET, BRYANSTON
 P O BOX 99867, SLOANE PARK 2152, RSA
 Tel +27 (0)11 361 1360, Fax +27 (0)11 361 1361, wsp@wspgroup.co.za

DATA SOURCE:
 Service Layer Credits: World Ocean Base; Esri, GEBCO, DeLorme, NaturalVue, World Imagery; Maxar

COORDINATE SYSTEM:

PROJECT TITLE:
 CAMDEN RENEWABLE ENERGY COMPLEX

SCALE: DRAWN BY: JN

DATE: 2022/08/12 REVIEWED BY: AS

FIGURE NO: PROJECT NO: 41103247 REV:

© COPYRIGHT RESERVED
 The contents of this document is privileged and confidential and may not be disclosed or reproduced without the express authorisation of the author, being "WSP Environmental (Pty) Ltd"

