

**SCREENING REPORT FOR AN ENVIRONMENTAL AUTHORIZATION OR  
FOR A PART TWO AMENDMENT OF AN ENVIRONMENTAL AUTHORISATION  
AS REQUIRED BY THE 2014 EIA REGULATIONS – PROPOSED SITE  
ENVIRONMENTAL SENSITIVITY**

**EIA Reference number:** DEFF Ref: to be confirmed

**Project name:** Richards Bay Gas to Power Plant, Alton, Richards Bay

**Project title:** Transmission Infrastructure for the 400MW RBGP2 gas-to-power plant, Richards Bay, Kwazulu-Natal Province

**Date screening report generated:** 07/11/2020 21:18:35

**Applicant:** Richards Bay Gas Power 2 (Pty) Ltd

**Compiler:** Savannah Environmental (Pty) Ltd

**Compiler signature:**

.....

# Table of Contents

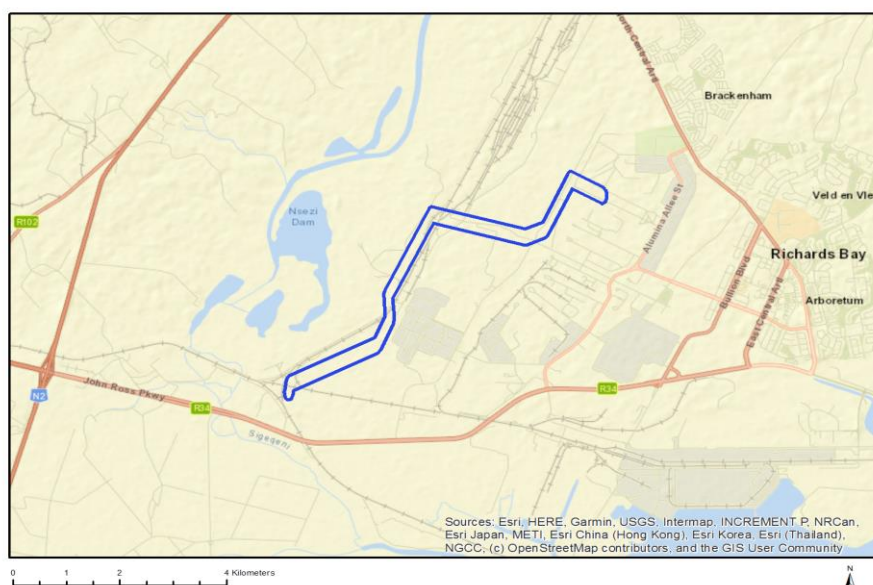
- Proposed Project Location ..... 3
  - Orientation map 1: General location ..... 3
- Map of proposed site and relevant area(s) ..... 4
  - Cadastral details of the proposed site ..... 4
  - Wind and Solar developments with an approved Environmental Authorisation or applications under consideration within 30 km of the proposed area ..... 5
  - Environmental Management Frameworks relevant to the application ..... 5
- Environmental screening results and assessment outcomes ..... 5
  - Relevant development incentives, restrictions, exclusions or prohibitions ..... 5
- Map indicating proposed development footprint within applicable development incentive, restriction, exclusion or prohibition zones ..... 6
  - Proposed Development Area Environmental Sensitivity ..... 6
  - Specialist assessments identified ..... 7
- Results of the environmental sensitivity of the proposed area ..... 9
  - MAP OF RELATIVE AGRICULTURE THEME SENSITIVITY ..... 9
  - MAP OF RELATIVE ANIMAL SPECIES THEME SENSITIVITY ..... 10
  - MAP OF RELATIVE AQUATIC BIODIVERSITY THEME SENSITIVITY ..... 11
  - MAP OF RELATIVE ARCHAEOLOGICAL AND CULTURAL HERITAGE THEME SENSITIVITY ..... 12
  - MAP OF RELATIVE CIVIL AVIATION THEME SENSITIVITY ..... 13
  - MAP OF RELATIVE DEFENCE THEME SENSITIVITY ..... 14
  - MAP OF RELATIVE PLANT SPECIES THEME SENSITIVITY ..... 15
  - MAP OF RELATIVE TERRESTRIAL BIODIVERSITY THEME SENSITIVITY ..... 16

# Proposed Project Location

## Orientation map 1: General location



## Map of proposed site and relevant area(s)



## Cadastral details of the proposed site

Property details:

No	Farm Name	Farm/ Erf No	Portion	Latitude	Longitude	Property Type
1	RICHARDS BAY	397	0	28°46'45.84S	32°3'53.35E	Erven
2	RICHARDS BAY	6724	7	28°45'25.89S	31°59'51.61E	Erven
3	RICHARDS BAY	5333	0	28°46'37S	31°59'15E	Erven
4	RICHARDS BAY	9074	0	28°44'14.52S	32°1'11.58E	Erven
5	RICHARDS BAY	16672	0	28°44'17.2S	32°1'18.44E	Erven
6	RICHARDS BAY	17455	0	28°44'24.1S	32°1'30.21E	Erven
7	RICHARDS BAY	17458	0	28°44'27.23S	32°1'44.51E	Erven
8	RICHARDS BAY	8721	0	28°44'32.39S	32°1'42.27E	Erven
9	RICHARDS BAY	8817	0	28°44'20.02S	32°1'26.41E	Erven
10	RICHARDS BAY	11376	2	28°46'11.62S	31°59'7.11E	Erven
11	RICHARDS BAY	16786	0	28°44'7.11S	32°1'25.25E	Erven
12	RICHARDS BAY	17456	0	28°44'21.89S	32°1'25.25E	Erven
13	RICHARDS BAY	17457	0	28°44'21.71S	32°1'36.03E	Erven
14	RICHARDS BAY	11376	1	28°46'0.14S	31°58'46.21E	Erven
15	RICHARDS BAY	8825	0	28°44'10.13S	32°1'18.92E	Erven
16	RICHARDS BAY	9033	0	28°44'21.97S	32°1'28.96E	Erven
17	RICHARDS BAY	11375	0	28°46'6.43S	31°58'58.99E	Erven
18	RICHARDS BAY	16670	0	28°44'35.27S	32°1'2.11E	Erven
19	RICHARDS BAY	16785	0	28°44'13.16S	32°1'11.63E	Erven
20	RICHARDS BAY	16671	0	28°44'34.61S	32°1'25.08E	Erven
21	RICHARDS BAY	8818	0	28°44'22.75S	32°1'32.11E	Erven
22	RICHARDS BAY	11376	5	28°46'21.7S	31°58'56.75E	Erven
23	RICHARDS BAY	11376	4	28°46'3.91S	31°59'18.88E	Erven
24	RESERVE 6	15825	0	28°46'20.3S	32°0'13.98E	Farm
25	RESERVE 6	15825	0	28°45'14.62S	31°58'58.11E	Farm Portion
26	RESERVE 6	15825	12	28°44'30.59S	32°0'13.54E	Farm Portion
27	RESERVE 6	15825	0	28°46'22.12S	31°58'28.38E	Farm Portion
28	RESERVE 6	15825	51	28°44'46.69S	32°0'47.74E	Farm Portion
29	RESERVE 6	15825	0	28°44'10.51S	32°2'28.85E	Farm Portion

Development footprint<sup>1</sup> vertices:  
No development footprint(s) specified.

## Wind and Solar developments with an approved Environmental Authorisation or applications under consideration within 30 km of the proposed area

No nearby wind or solar developments found.

## Environmental Management Frameworks relevant to the application

No intersections with EMF areas found.

## Environmental screening results and assessment outcomes

The following sections contain a summary of any development incentives, restrictions, exclusions or prohibitions that apply to the proposed development site as well as the most environmental sensitive features on the site based on the site sensitivity screening results for the application classification that was selected. The application classification selected for this report is:  
Any activities within or close to a watercourse | Any activities within or close to a watercourse.

### Relevant development incentives, restrictions, exclusions or prohibitions

The following development incentives, restrictions, exclusions or prohibitions and their implications that apply to this site are indicated below.

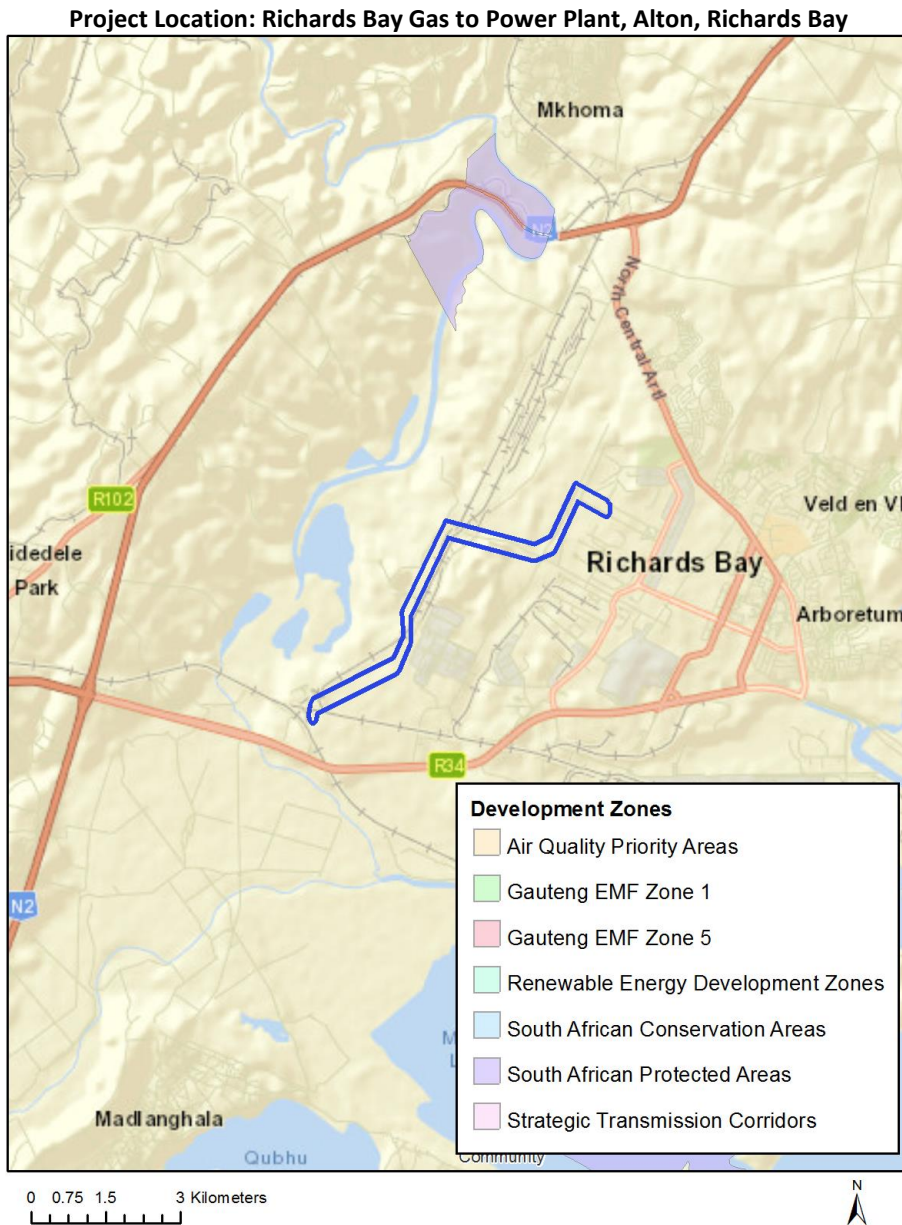
No intersection with any development zones found.

---

<sup>1</sup> “development footprint”, means the area within the site on which the development will take place and includes all ancillary developments for example roads, power lines, boundary walls, paving etc. which require vegetation clearance or which will be disturbed and for which the application has been submitted.



Map indicating proposed development footprint within applicable development incentive, restriction, exclusion or prohibition zones



**Proposed Development Area Environmental Sensitivity**

The following summary of the development site environmental sensitivities is identified. Only the highest environmental sensitivity is indicated. The footprint environmental sensitivities for the proposed development footprint as identified, are indicative only and must be verified on site by a suitably qualified person before the specialist assessments identified below can be confirmed.

Theme	Very High sensitivity	High sensitivity	Medium sensitivity	Low sensitivity
Agriculture Theme	X			
Animal Species Theme		X		

Aquatic Biodiversity Theme	X			
Archaeological and Cultural Heritage Theme			X	
Civil Aviation Theme		X		
Defence Theme				X
Plant Species Theme			X	
Terrestrial Biodiversity Theme	X			

### Specialist assessments identified

Based on the selected classification, and the environmental sensitivities of the proposed development footprint, the following list of specialist assessments have been identified for inclusion in the assessment report. It is the responsibility of the EAP to confirm this list and to motivate in the assessment report, the reason for not including any of the identified specialist study including the provision of photographic evidence of the site situation.

<b>N o</b>	<b>Special ist assess ment</b>	<b>Assessment Protocol</b>
1	Landscape/Visual Impact Assessment	<a href="https://screening.environment.gov.za/ScreeningDownloads/AssessmentProtocols/Gazetted_General_Requirement_Assessment_Protocols.pdf">https://screening.environment.gov.za/ScreeningDownloads/AssessmentProtocols/Gazetted_General_Requirement_Assessment_Protocols.pdf</a>
2	Archaeological and Cultural Heritage Impact Assessment	<a href="https://screening.environment.gov.za/ScreeningDownloads/AssessmentProtocols/Gazetted_General_Requirement_Assessment_Protocols.pdf">https://screening.environment.gov.za/ScreeningDownloads/AssessmentProtocols/Gazetted_General_Requirement_Assessment_Protocols.pdf</a>
3	Palaeontology Impact Assessment	<a href="https://screening.environment.gov.za/ScreeningDownloads/AssessmentProtocols/Gazetted_General_Requirement_Assessment_Protocols.pdf">https://screening.environment.gov.za/ScreeningDownloads/AssessmentProtocols/Gazetted_General_Requirement_Assessment_Protocols.pdf</a>
4	Terrestrial Biodiversity Impact Assessment	<a href="https://screening.environment.gov.za/ScreeningDownloads/AssessmentProtocols/Gazetted_Terrestrial_Biodiversity_Assessment_Protocols.pdf">https://screening.environment.gov.za/ScreeningDownloads/AssessmentProtocols/Gazetted_Terrestrial_Biodiversity_Assessment_Protocols.pdf</a>
5	Aquatic Biodiversity Impact Assessment	<a href="https://screening.environment.gov.za/ScreeningDownloads/AssessmentProtocols/Gazetted_Aquatic_Biodiversity_Assessment_Protocols.pdf">https://screening.environment.gov.za/ScreeningDownloads/AssessmentProtocols/Gazetted_Aquatic_Biodiversity_Assessment_Protocols.pdf</a>
6	Hydrology Assessment	<a href="https://screening.environment.gov.za/ScreeningDownloads/AssessmentProtocols/Gazetted_General_Requirement_Assessment_Protocols.pdf">https://screening.environment.gov.za/ScreeningDownloads/AssessmentProtocols/Gazetted_General_Requirement_Assessment_Protocols.pdf</a>
7	Socio-Economic Assessment	<a href="https://screening.environment.gov.za/ScreeningDownloads/AssessmentProtocols/Gazetted_General_Requirement_Assessment_Protocols.pdf">https://screening.environment.gov.za/ScreeningDownloads/AssessmentProtocols/Gazetted_General_Requirement_Assessment_Protocols.pdf</a>

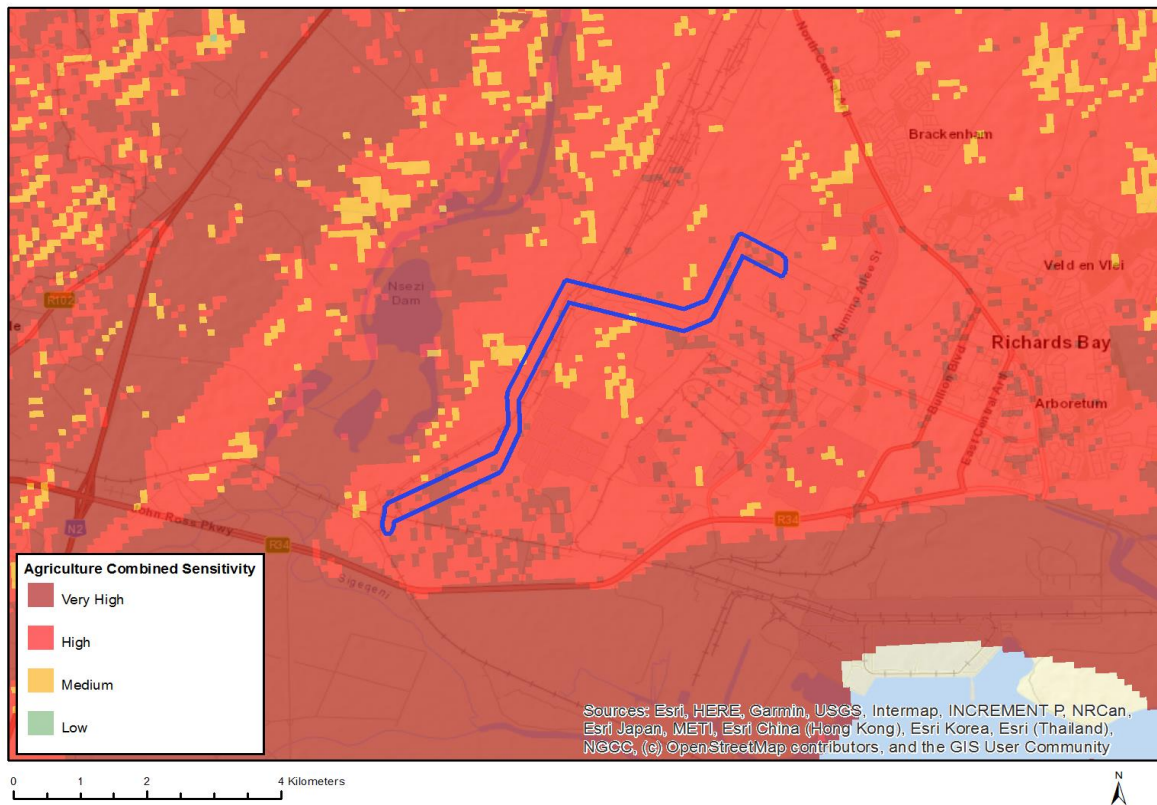
	ent	
8	Plant Species Assessm ent	<a href="https://screening.environment.gov.za/ScreeningDownloads/AssessmentProtocols/Gazetted_Plant_Species_Assessment_Protocols.pdf">https://screening.environment.gov.za/ScreeningDownloads/AssessmentProtocols/Gazetted_Plant_Species_Assessment_Protocols.pdf</a>
9	Animal Species Assessm ent	<a href="https://screening.environment.gov.za/ScreeningDownloads/AssessmentProtocols/Gazetted_Animal_Species_Assessment_Protocols.pdf">https://screening.environment.gov.za/ScreeningDownloads/AssessmentProtocols/Gazetted_Animal_Species_Assessment_Protocols.pdf</a>



## Results of the environmental sensitivity of the proposed area.

The following section represents the results of the screening for environmental sensitivity of the proposed site for relevant environmental themes associated with the project classification. It is the duty of the EAP to ensure that the environmental themes provided by the screening tool are comprehensive and complete for the project. Refer to the disclaimer.

### MAP OF RELATIVE AGRICULTURE THEME SENSITIVITY

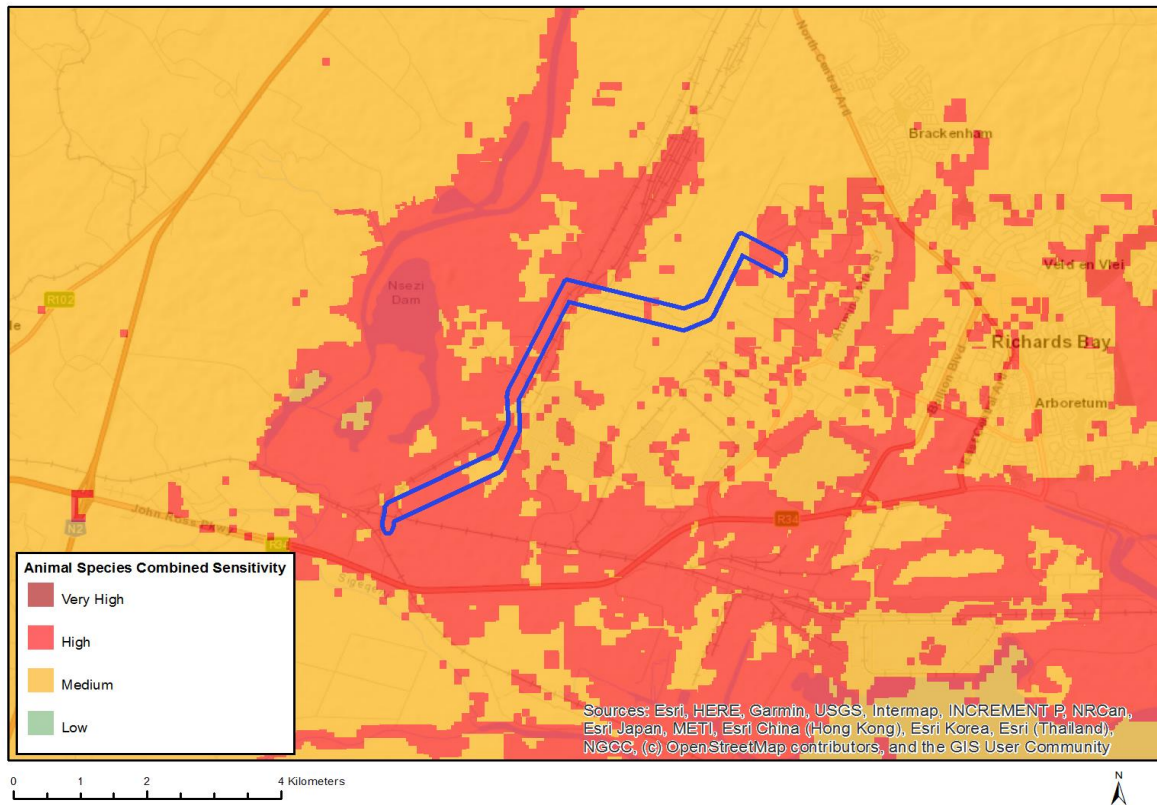


Very High sensitivity	High sensitivity	Medium sensitivity	Low sensitivity
X			

#### Sensitivity Features:

Sensitivity	Feature(s)
High	Land capability;09. Moderate-High/10. Moderate-High
Medium	Land capability;06. Low-Moderate/07. Low-Moderate/08. Moderate
Very High	Land capability;11. High/12. High-Very high/13. High-Very high/14. Very high/15. Very high

## MAP OF RELATIVE ANIMAL SPECIES THEME SENSITIVITY

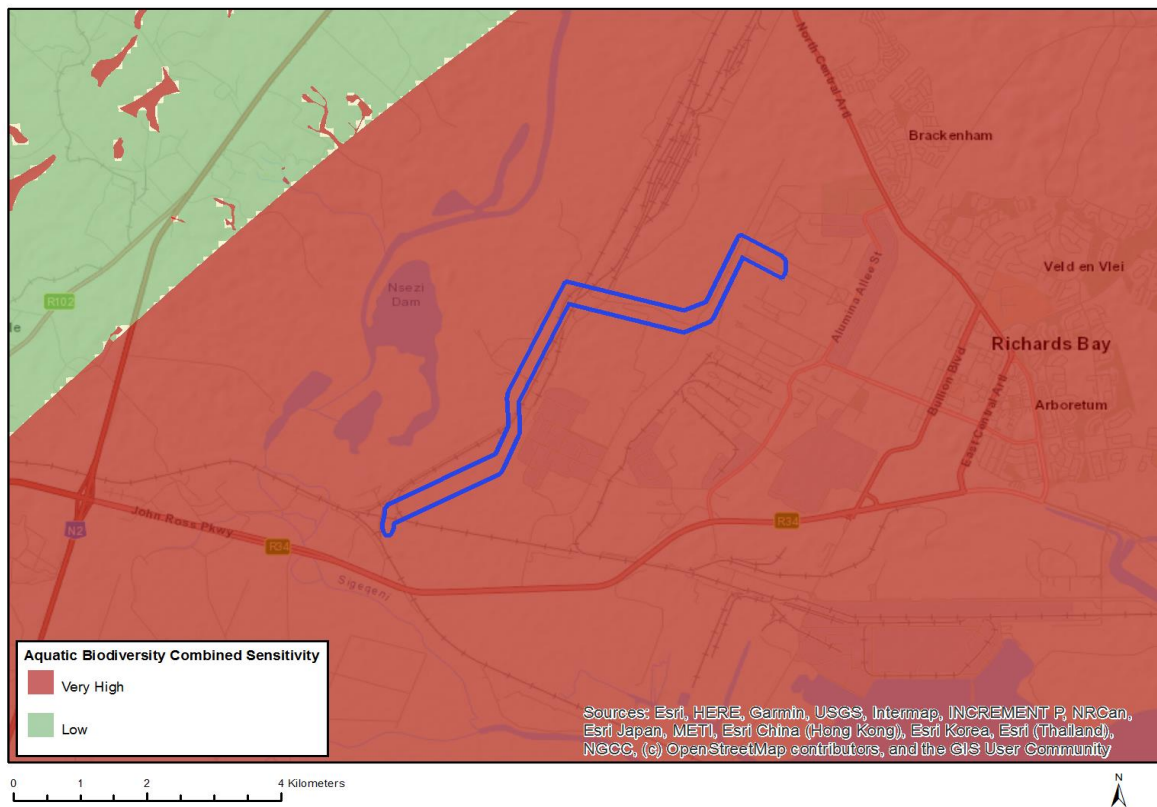


Very High sensitivity	High sensitivity	Medium sensitivity	Low sensitivity
	X		

### Sensitivity Features:

Sensitivity	Feature(s)
High	Sensitive species 9
High	Aves-Circus ranivorus
High	Aves-Nettapus auritus
High	Aves-Halcyon senegaloides
High	Aves-Circaetus fasciolatus
High	Aves-Geokichla guttata
Medium	Mammalia-Lycaon pictus
Medium	Invertebrate-Pomatonota dregii
Medium	Insecta-Deloneura millari millari
Medium	Reptilia-Pelusios rhodesianus
Medium	Sensitive species 2
Medium	Insecta-Teriomima zuluana
Medium	Sensitive species 5
Medium	Invertebrate-Forest invertebrate
Medium	Invertebrate-Arytropteris basalis
Medium	Aves-Halcyon senegaloides
Medium	Amphibia-Hyperolius pickersgilli
Medium	Sensitive species 9
Medium	Aves-Circaetus fasciolatus
Medium	Aves-Geokichla guttata

## MAP OF RELATIVE AQUATIC BIODIVERSITY THEME SENSITIVITY

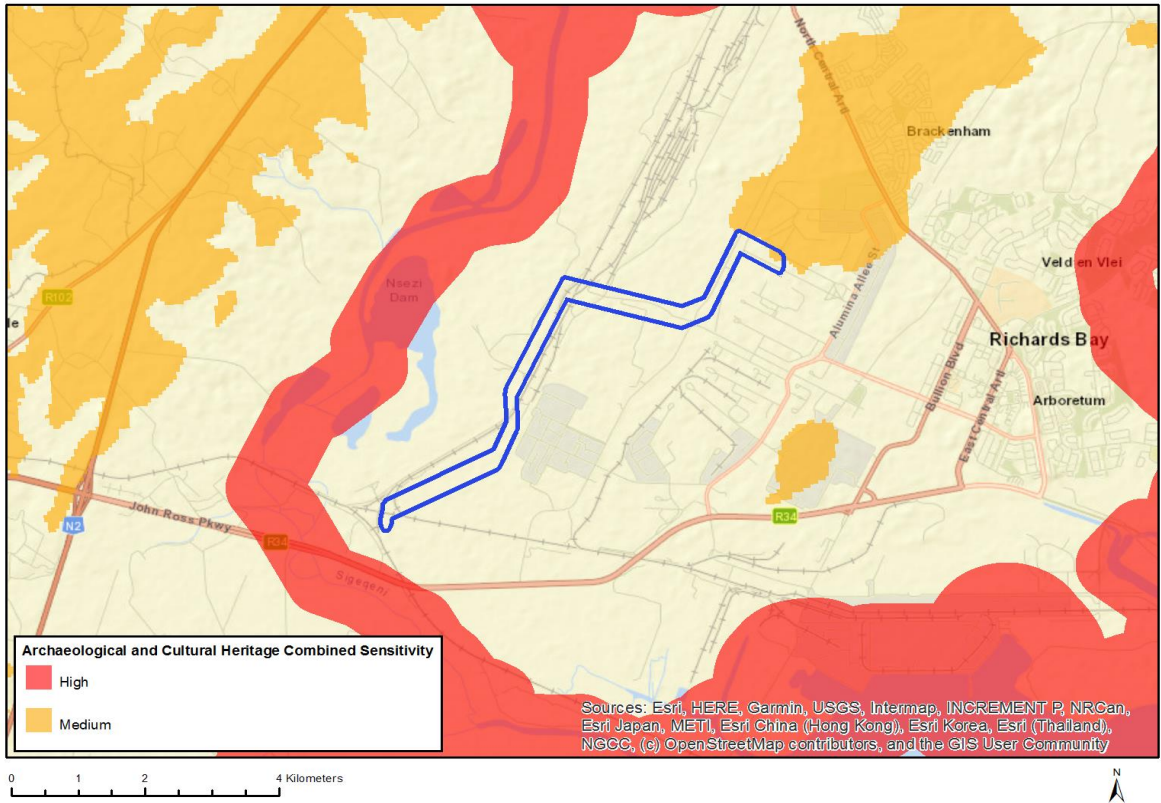


Very High sensitivity	High sensitivity	Medium sensitivity	Low sensitivity
X			

### Sensitivity Features:

Sensitivity	Feature(s)
Very High	Strategic water source area
Very High	Wetlands and Estuaries

# MAP OF RELATIVE ARCHAEOLOGICAL AND CULTURAL HERITAGE THEME SENSITIVITY



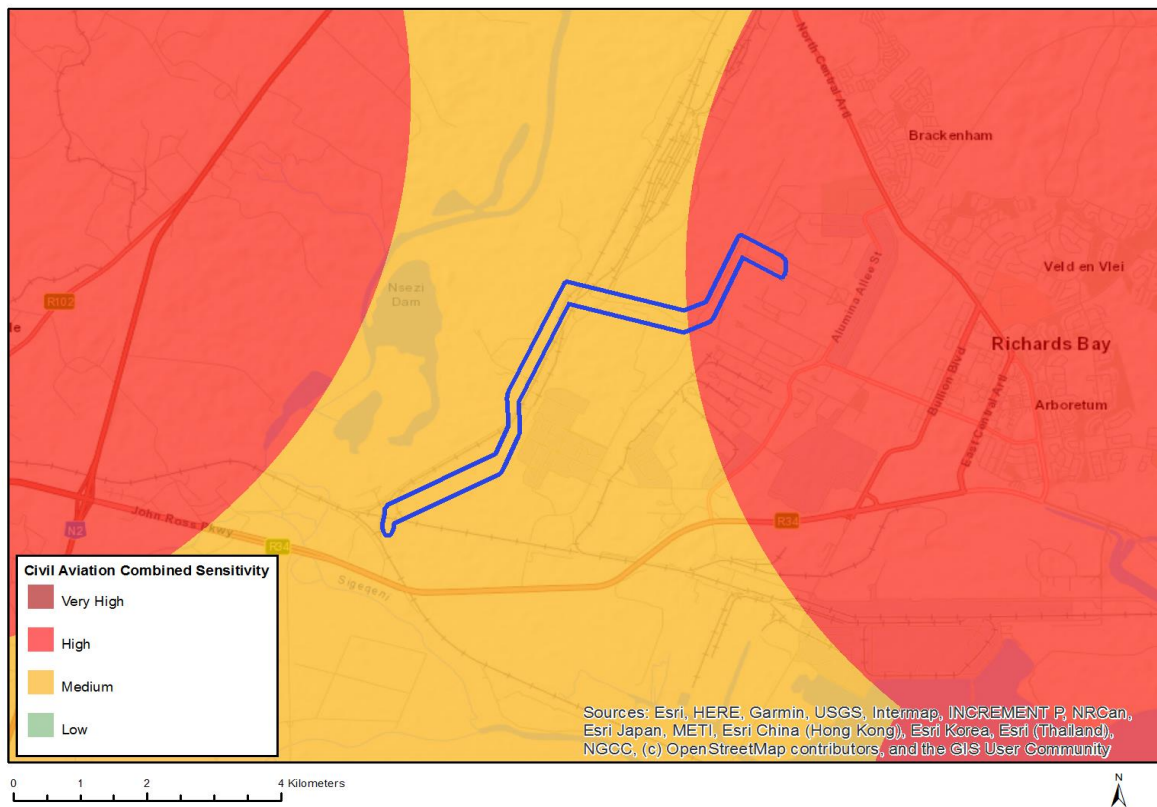
Very High sensitivity	High sensitivity	Medium sensitivity	Low sensitivity
		X	

## Sensitivity Features:

Sensitivity	Feature(s)
Medium	Mountain or ridge



## MAP OF RELATIVE CIVIL AVIATION THEME SENSITIVITY

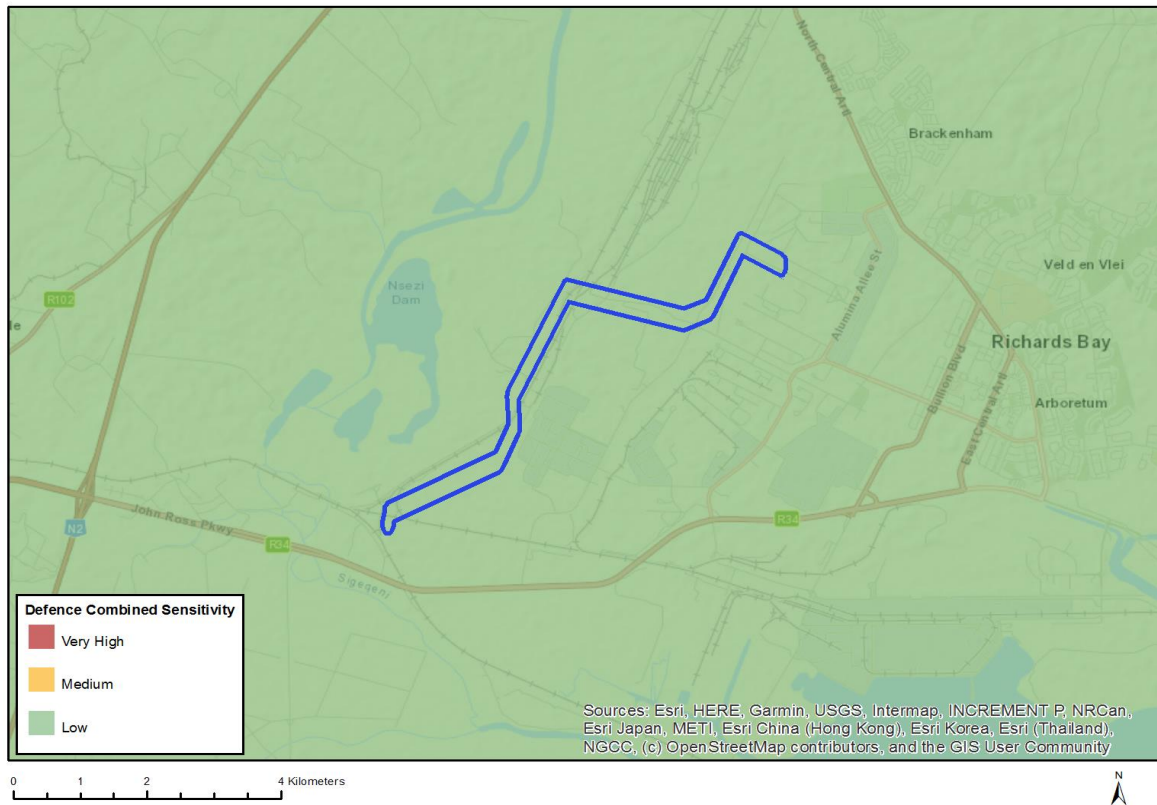


Very High sensitivity	High sensitivity	Medium sensitivity	Low sensitivity
	X		

### Sensitivity Features:

Sensitivity	Feature(s)
High	Within 8 km of other civil aviation aerodrome
Medium	Between 8 and 15 km of other civil aviation aerodrome

## MAP OF RELATIVE DEFENCE THEME SENSITIVITY

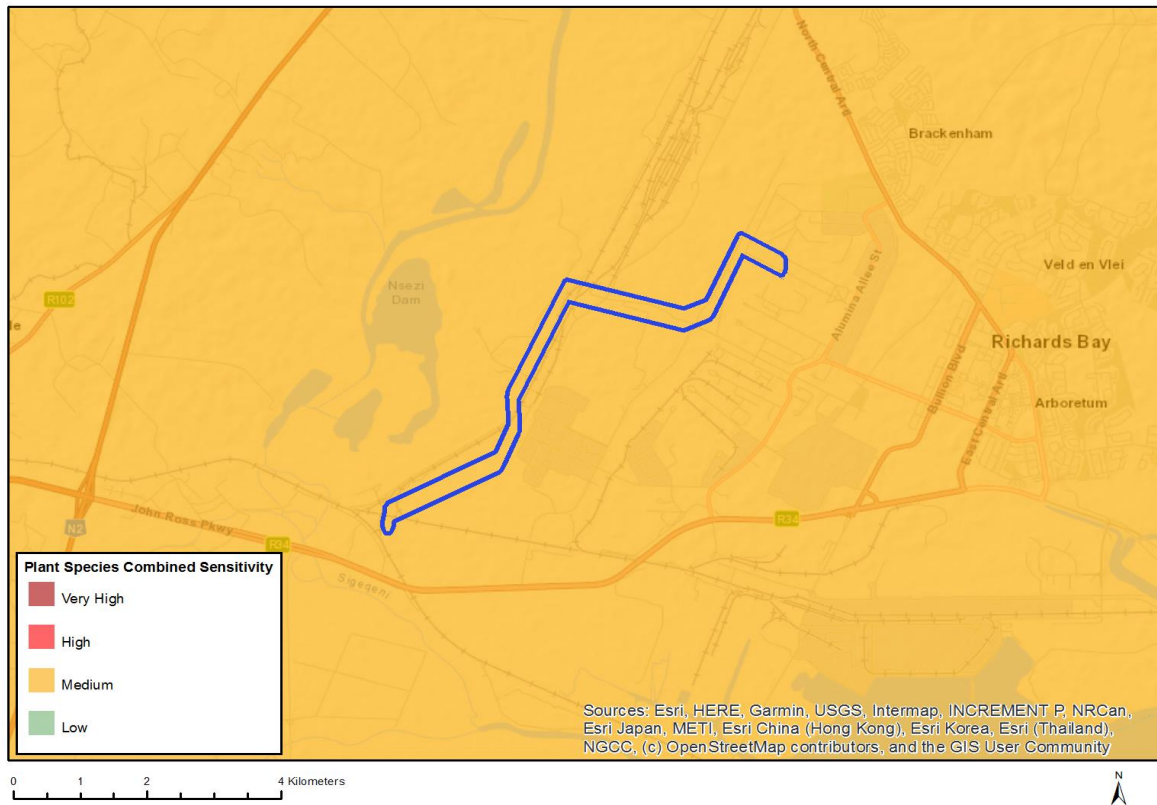


Very High sensitivity	High sensitivity	Medium sensitivity	Low sensitivity
			X

### Sensitivity Features:

Sensitivity	Feature(s)
Low	Low sensitivity

## MAP OF RELATIVE PLANT SPECIES THEME SENSITIVITY



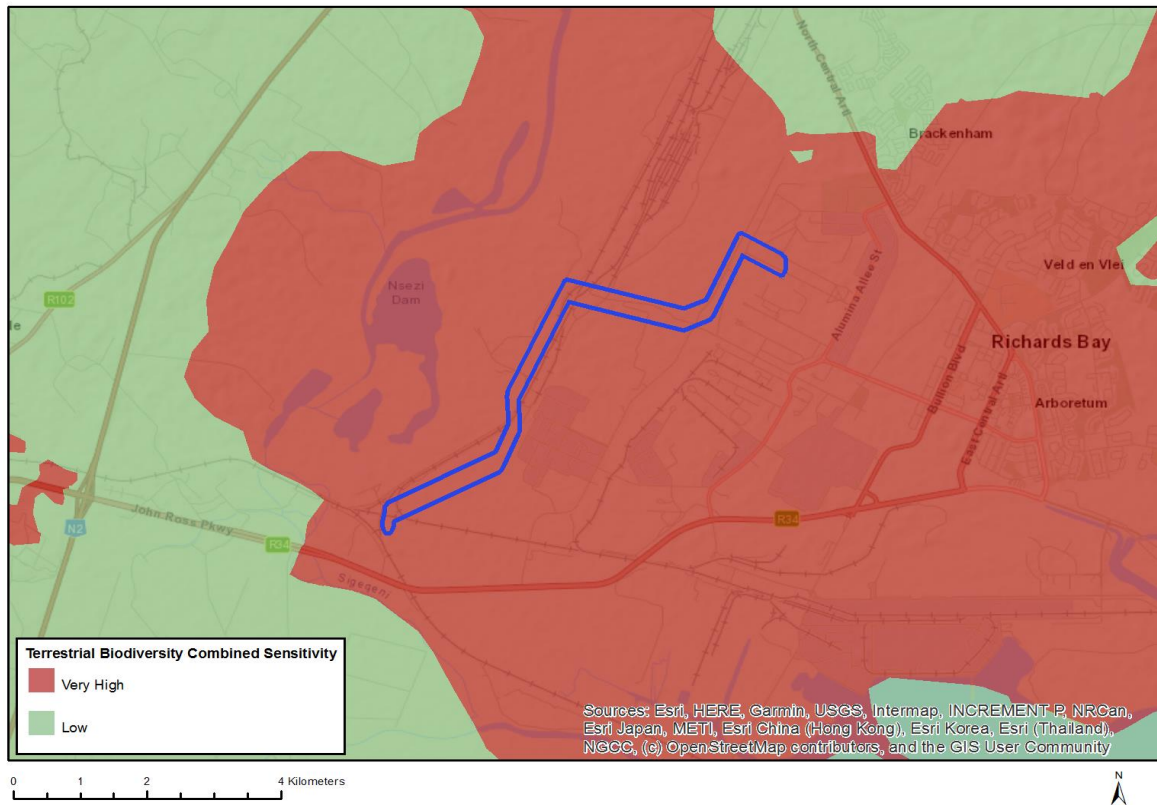
Very High sensitivity	High sensitivity	Medium sensitivity	Low sensitivity
		X	

### Sensitivity Features:

Sensitivity	Feature(s)
Medium	<i>Freesia laxa</i> subsp. <i>azurea</i>
Medium	Sensitive species 275
Medium	<i>Oxygonum dregeanum</i> subsp. <i>streyi</i>
Medium	<i>Pachycarpus concolor</i> subsp. <i>arenicola</i>
Medium	Sensitive species 471
Medium	<i>Nidorella tongensis</i>
Medium	<i>Senecio ngoyanus</i>
Medium	<i>Aspalathus gerrardii</i>
Medium	<i>Wolffiella denticulata</i>
Medium	<i>Thesium polygaloides</i>



## MAP OF RELATIVE TERRESTRIAL BIODIVERSITY THEME SENSITIVITY



Very High sensitivity	High sensitivity	Medium sensitivity	Low sensitivity
X			

### Sensitivity Features:

Sensitivity	Feature(s)
Very High	Critical Biodiversity Area
Very High	Focus Areas for land-based protected areas expansion
Very High	Critically endangered ecosystem