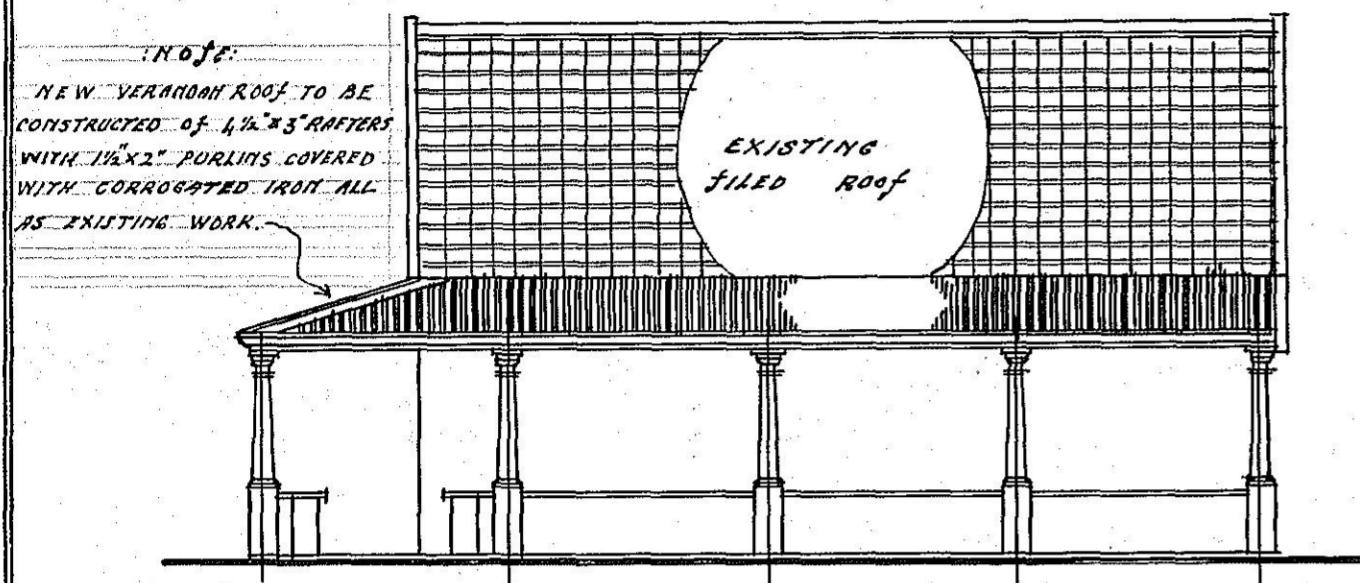


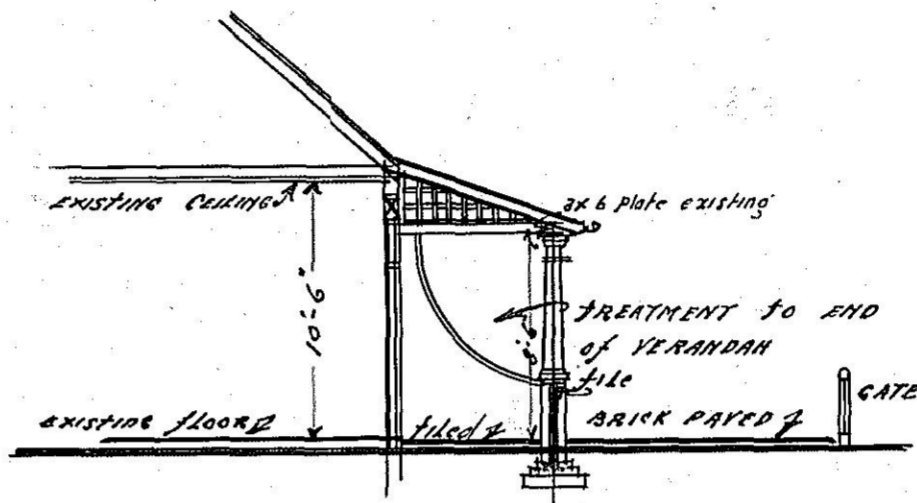
# ALTERATIONS TO HOUSE DAVIS STREET PIETERMARITZBURG FOR MR W. E. LUNDIE

DOMINION ENGINEERS OFFICE  
RECEIVED  
16 MAR 1926  
REPLY 1948/26

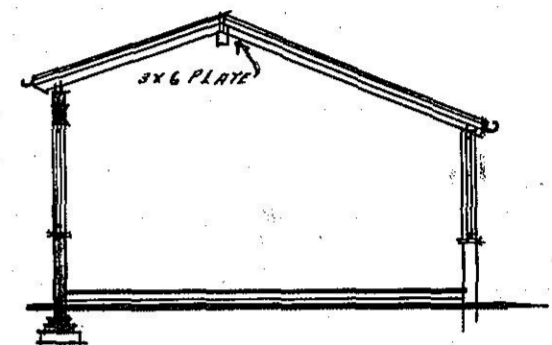
SCALE 8 FEET = 1 INCH



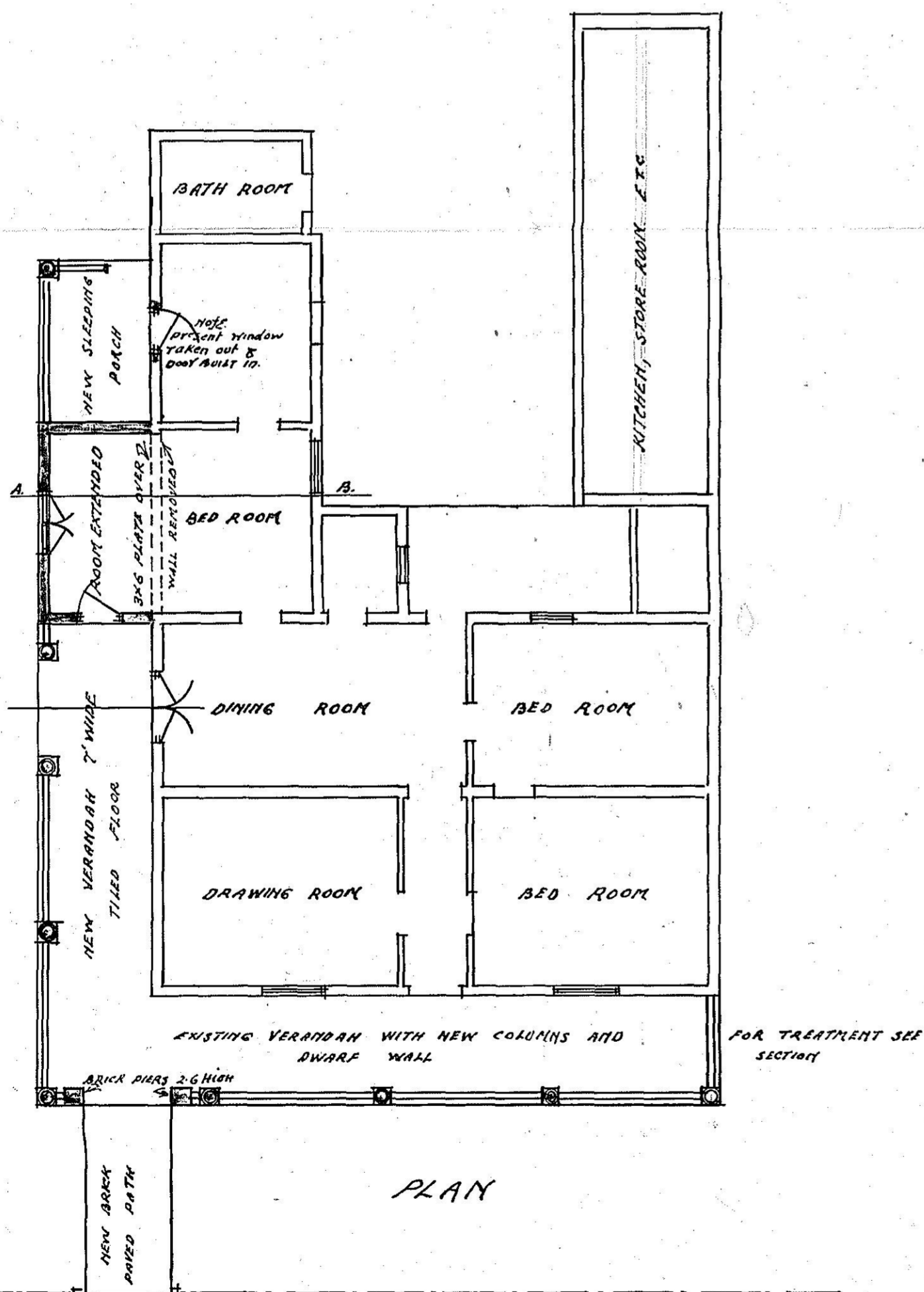
ELEVATION SHEWING NEW COLUMNS AND DWARF WALL



SECTION THRO' VERANDAH SHEWING NEW COLUMNS

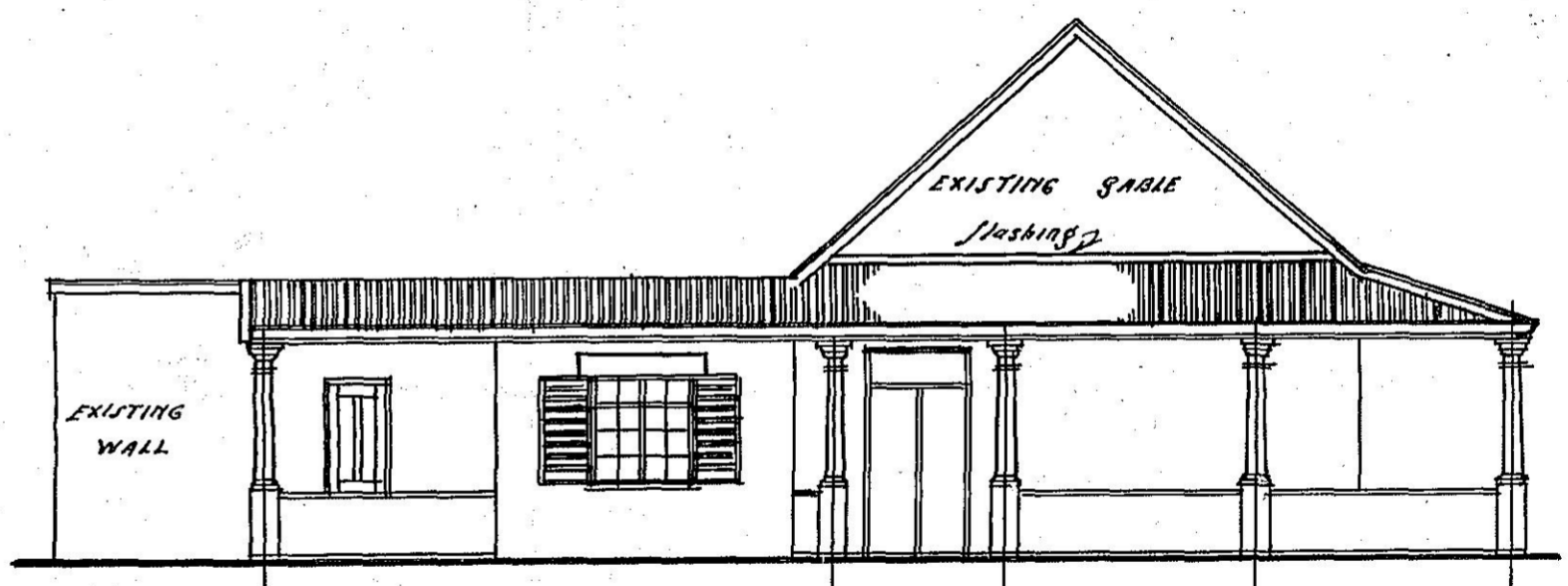


SECTION A. B. SHEWING NEW ADDITION TO ROOM.



PLAN

DAVIS STREET



SIDE ELEVATION

APPROVED  
16 MAR 1926

*A. R. Collins*  
for Actg. DOMINION ENGINEERS

J. COLLINGWOOD TULLY, F.R.I.B.A.  
LAND BANK CHAMBERS  
PIETERMARITZBURG.