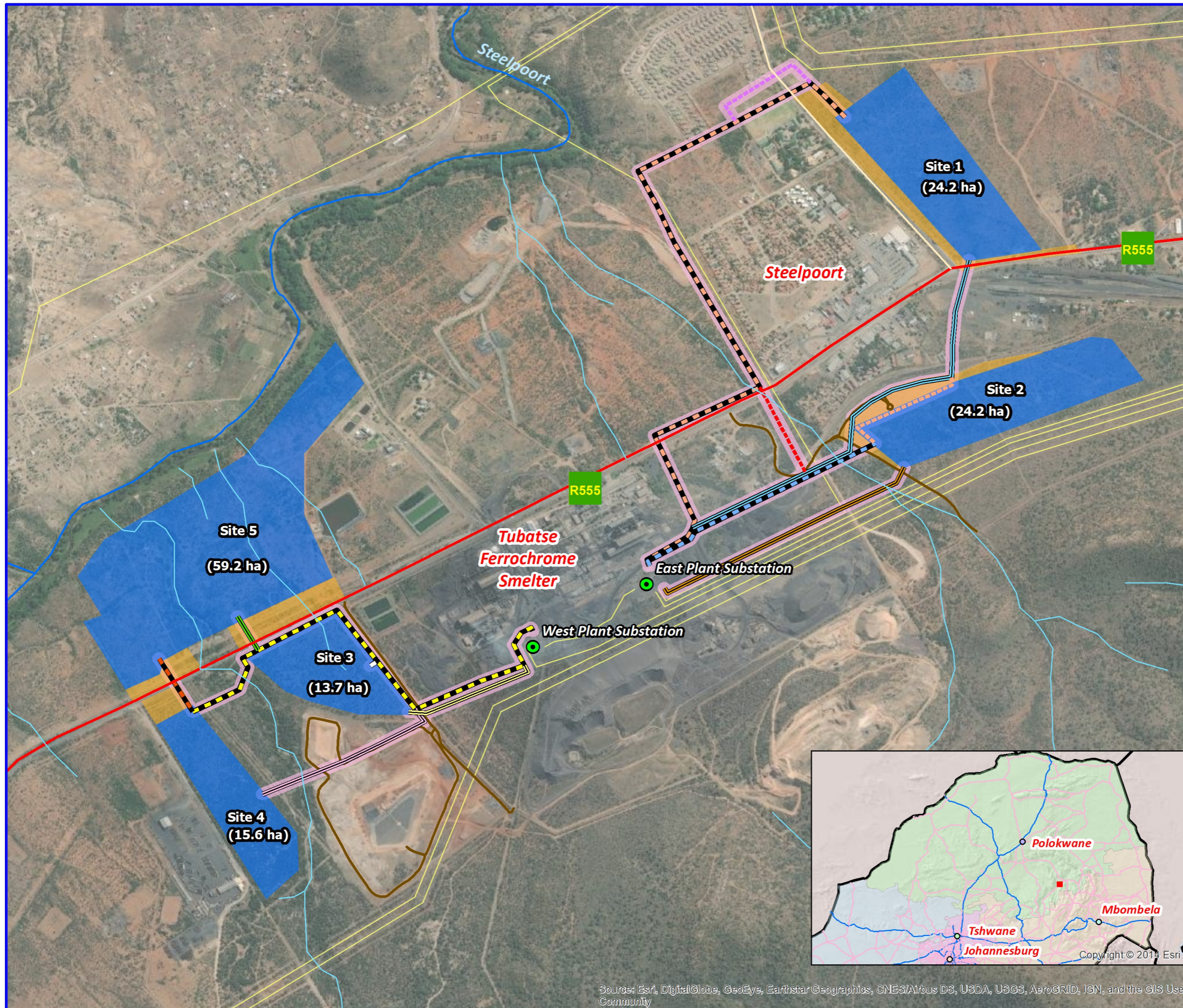


Appendix A: Maps and Coordinates

EIA for the proposed
60MWp Photovoltaic Power
Plant at the Tubatse
Ferrochrome Smelter,
Steelpoort

LOCALITY



Legend

- Proposed Development Sites
- Existing Eskom Power Lines
- Proposed Power Lines**
- Name**
- Site 1 33kV line
- Site 1 33kV line Alternative
- Site 1 33kV line Alternative A
- Site 1 33kV line Alternative B
- Site 1 33kV line Alternative C
- Site 2 33kV line
- Site 2 33kV line Alternative
- Site 3 33kV Alternative
- Site 3 33kV line link
- Site 4 33kV line
- Site 4 33kV line Alternative
- Site 5 33kV line
- Site 5 33kV line Alternative
- Power Lines - 50m Assessment Corridors
- Roads**
- Class**
- Provincial
- Secondary tar
- Existing Site Access Roads
- New Site Access Road Assessment Areas
- Rivers
- Watercourses



Scale 1:15,000
0 250 500 1,000 Meters

Date: 21 May 2021
Created by: Paul da Cruz
RHDHV Ref: MD5462

Coordinate System: Custom
Datum: WGS 1984
Units: Degree

Data Sources:
ESRI
MDB
DTI



Source: Esri, DigitalGlobe, GeoEye, Earthstar Geographics, CNES/Airbus DS, USDA, USGS, AeroGRID, IGN, and the GIS User Community

Tel: +27 (0) 11 798 6425
Fax: +27 (0) 11 798 6005
www.rhdhv.co.za



Component	Co-ordinates
Site 1	A: 24°43'31.02"S; 30°12'18.02"E B: 24°43'24.40"S; 30°12'27.18"E C: 24°43'48.38"S; 30°12'45.13"E D: 24°43'50.12"S; 30°12'35.36"E
Site 2	A: 24°43'59.87"S; 30°12'51.81"E B: 24°44'5.70"S; 30°12'58.81"E C: 24°44'17.42"S; 30°12'27.03"E D: 24°44'12.03"S; 30°12'20.22"E
Site 3	A: 24°44'36.11"S; 30°11'12.04"E B: 24°44'49.93"S; 30°11'22.50"E C: 24°44'48.60"S; 30°11'10.57"E D: 24°44'42.36"S; 30°11'0.28"E
Site 4	A: 24°44'51.24"S; 30°10'48.35"E B: 24°44'48.67"S; 30°10'53.17"E C: 24°45'5.58"S; 30°11'7.04"E D: 24°45'10.50"S; 30°11'7.16"E E: 24°45'14.15"S; 30°11'2.87"E
Site 5	A: 24°44'46.48"S; 30°10'44.29"E B: 24°44'31.56"S; 30°10'38.02"E C: 24°44'0.69"S; 30°11'11.95"E D: 24°44'5.99"S; 30°11'15.79"E E: 24°44'31.73"S; 30°11'11.60"E
Site 1 Access Road	Start: 24°43'30.14"S; 30°12'19.02"E Middle: 24°43'40.29"S; 30°12'25.14"E End: 24°43'48.25"S; 30°12'50.10"E
Site 2 Access Road	Start: 24°44'1.91"S; 30°12'45.40"E Middle: 24°44'6.94"S; 30°12'27.55"E End: 24°44'17.60"S; 30°12'27.09"E
Site 3 Access Road	Start: 24°44'32.86"S; 30°11'12.47"E Middle: 24°44'36.44"S; 30°11'5.36"E End: 24°44'39.88"S; 30°10'58.55"E
Site 4 Access Road	Start: 24°44'47.31"S; 30°10'52.22"E Middle: 24°44'48.33"S; 30°10'49.81"E End: 24°44'49.53"S; 30°10'47.46"E
Site 5 Access Road	Start: 24°44'42.49"S; 30°10'53.53"E Middle: 24°44'45.07"S; 30°10'49.45"E End: 24°44'47.40"S; 30°10'45.04"E
Site 1 33kV line	1: 24°43'30.82"S; 30°12'19.28"E 2: 24°43'28.44"S; 30°12'16.96"E 3: 24°43'26.26"S; 30°12'14.71"E (bend point) 4: 24°43'30.32"S; 30°12'7.02"E 5: 24°43'34.31"S; 30°11'59.23"E 6: 24°43'37.94"S; 30°11'52.01"E (bend point) 7: 24°43'45.27"S; 30°11'55.78"E 8: 24°43'52.54"S; 30°11'59.79"E 9: 24°43'59.72"S; 30°12'4.03"E 10: 24°44'6.50"S; 30°12'8.05"E (bend point) 11: 24°44'9.59"S; 30°12'1.22"E 12: 24°44'12.83"S; 30°11'54.16"E (bend point) 13: 24°44'18.60"S; 30°11'56.85"E 14: 24°44'24.11"S; 30°11'59.46"E (bend point) 15: 24°44'25.34"S; 30°11'59.08"E (bend point) 16: 24°44'26.21"S; 30°11'58.56"E (bend point) 17: 24°44'29.30"S; 30°11'53.15"E (bend point) 18: 24°44'30.13"S; 30°11'53.38"E

Site 1 33kV line Alternative	1: 24°43'49.86"S; 30°12'35.64"E 2: 24°43'56.64"S; 30°12'33.84"E 3: 24°44'5.21"S; 30°12'33.35"E (bend point) 4: 24°44'6.94"S; 30°12'25.49"E 5: 24°44'8.47"S; 30°12'22.64"E 6: 24°44'10.46"S; 30°12'20.31"E (bend point) 7: 24°44'15.07"S; 30°12'19.90"E (bend point) 8: 24°44'18.88"S; 30°12'12.08"E 9: 24°44'21.43"S; 30°12'6.68"E 10: 24°44'25.03"S; 30°11'59.18"E
Site 1 33kV line Alternative A	1: 24°44'5.21"S; 30°12'33.35"E 2: 24°44'6.25"S; 30°12'33.42"E (bend point) 3: 24°44'8.98"S; 30°12'27.23"E 4: 24°44'11.87"S; 30°12'20.91"E (bend point) 5: 24°44'13.89"S; 30°12'23.25"E
Site 1 33kV line Alternative B	1: 24°43'26.23"S; 30°12'14.62"E 2: 24°43'23.89"S; 30°12'12.30"E (bend point) 3: 24°43'26.47"S; 30°12'8.25"E 4: 24°43'29.40"S; 30°12'3.52"E (bend point) 5: 24°43'31.31"S; 30°12'4.86"E
Site 1 33kV line Alternative C	1: 24°44'6.50"S; 30°12'8.05"E 2: 24°44'11.58"S; 30°12'10.72"E 3: 24°44'17.81"S; 30°12'14.04"E
Site 2 33kV line	1: 24°44'13.89"S; 30°12'23.25"E 2: 24°44'17.82"S; 30°12'15.41"E 3: 24°44'21.70"S; 30°12'7.56"E 4: 24°44'25.59"S; 30°11'59.48"E (bend point) 5: 24°44'26.63"S; 30°11'58.88"E (bend point) 6: 24°44'28.10"S; 30°11'56.00"E 7: 24°44'29.53"S; 30°11'53.29"E (bend point) 8: 24°44'30.14"S; 30°11'53.54"E
Site 2 33kV line Alternative	1: 24°44'17.11"S; 30°12'27.07"E 2: 24°44'19.15"S; 30°12'26.03"E (bend point) 3: 24°44'22.90"S; 30°12'18.02"E 4: 24°44'26.72"S; 30°12'10.22"E 5: 24°44'30.49"S; 30°12'2.32"E 6: 24°44'33.66"S; 30°11'55.85"E (bend point) 7: 24°44'33.10"S; 30°11'55.43"E
Site 3 33kV Alternative	1: 24°44'49.45"S; 30°11'21.72"E 2: 24°44'49.59"S; 30°11'24.12"E 3: 24°44'46.83"S; 30°11'30.92"E 4: 24°44'44.09"S; 30°11'37.38"E (bend point) 5: 24°44'43.32"S; 30°11'36.98"E
Site 3 33kV line link	1: 24°44'43.29"S; 30°11'16.65"E 2: 24°44'42.74"S; 30°11'17.51"E

Site 4 33kV line	1: 24°44'49.34"S; 30°10'53.18"E 2: 24°44'46.49"S; 30°10'59.37"E (bend point) 3: 24°44'43.56"S; 30°11'0.42"E (bend point) 4: 24°44'42.27"S; 30°10'59.73"E (bend point) 5: 24°44'39.18"S; 30°11'6.00"E 6: 24°44'35.97"S; 30°11'12.19"E (bend point) 7: 24°44'42.74"S; 30°11'17.51"E 8: 24°44'49.09"S; 30°11'22.56"E (bend point) 9: 24°44'45.93"S; 30°11'29.88"E 10: 24°44'43.32"S; 30°11'36.98"E (bend point) 11: 24°44'40.51"S; 30°11'35.51"E (bend point) 12: 24°44'39.04"S; 30°11'36.48"E (bend point) 13: 24°44'38.33"S; 30°11'37.80"E 14: 24°44'38.71"S; 30°11'38.01"E
Site 4 33kV line Alternative	1: 24°45'0.26"S; 30°11'2.42"E 2: 24°44'56.93"S; 30°11'10.65"E 3: 24°44'54.32"S; 30°11'16.59"E 4: 24°44'50.70"S; 30°11'23.81"E 5: 24°44'49.09"S; 30°11'22.56"E
Site 5 33kV line	1: 24°44'42.40"S; 30°10'48.67"E 2: 24°44'45.97"S; 30°10'50.98"E 3: 24°44'49.34"S; 30°10'53.18"E
Site 5 33kV line Alternative	1: 24°44'36.87"S; 30°10'59.06"E 2: 24°44'38.99"S; 30°11'0.42"E 3: 24°44'41.20"S; 30°11'1.73"E

EIA for the proposed
60MW Photovoltaic Solar
Power Plant at the
Tubatse Ferrochrome
Smelter, Steelpoort

**ENVIRONMENTAL
SENSITIVITIES**

Legend

Proposed Development Sites

Proposed Power Lines

Name

- Site 1 33kV line
- Site 1 33kV line Alternative
- Site 1 33kV line Alternative A
- Site 1 33kV line Alternative B
- Site 1 33kV line Alternative C
- Site 2 33kV line
- Site 2 33kV line Alternative
- Site 3 33kV Alternative
- Site 3 33kV line link
- Site 4 33kV line
- Site 4 33kV line Alternative
- Site 5 33kV line
- Site 5 33kV line Alternative
- Site 6 33kV line
- Power Lines - 50m Assessment Corridors

Roads

Class

- Provincial
- Secondary tar
- New Site Access Road Assessment Areas

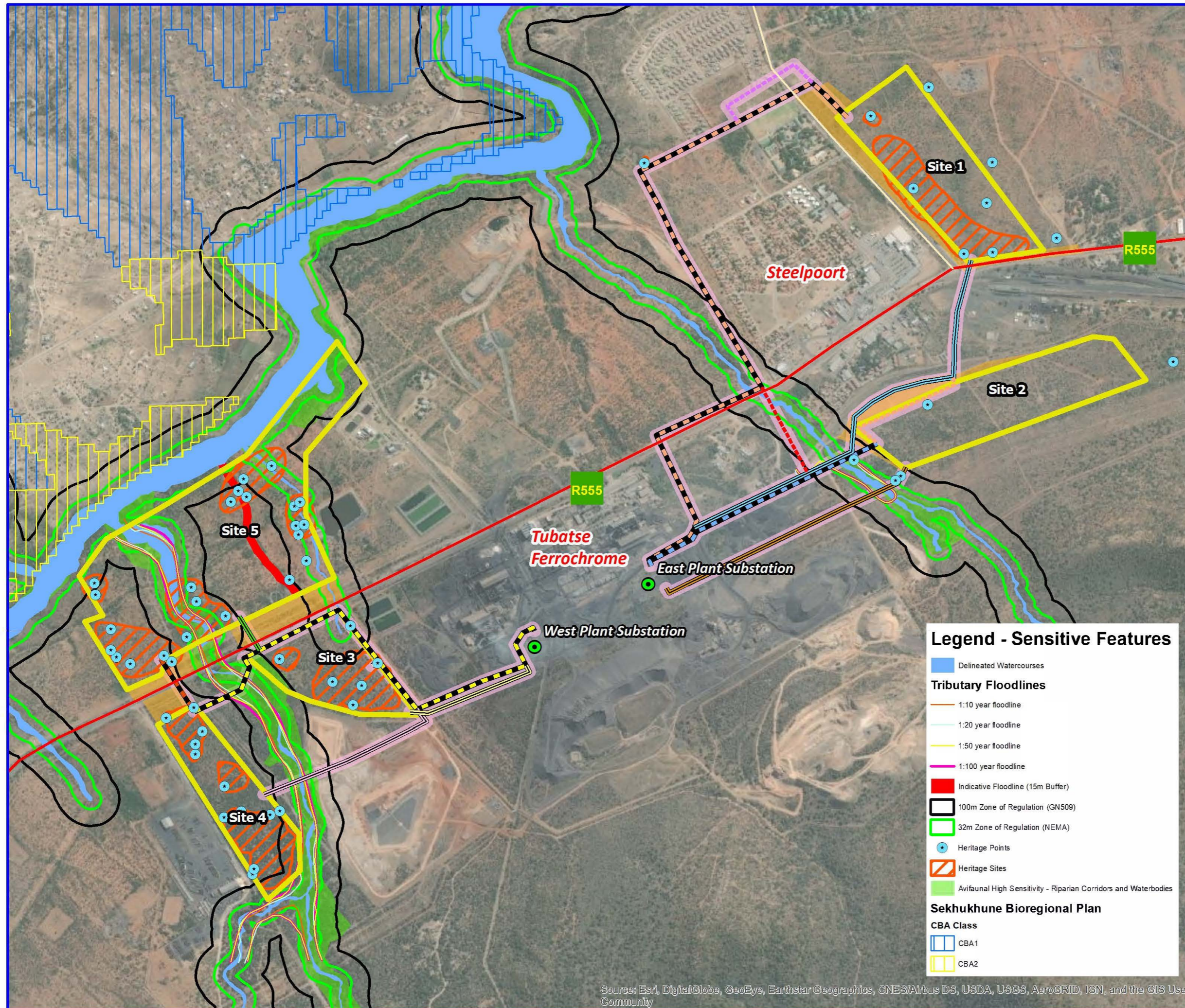
Scale 1:15,000
0 250 500 1,000 Meters

Date: 25 May 2021
Created by: Paul da Cruz
RHDHV Ref: MD5462

Coordinate System: Custom
Datum: WGS 1984
Units: Degree

Data Sources:
ESRI
MDB
DTI

Tel: +27 (0) 11 798 6425
Fax: +27 (0) 11 798 6005
www.rhdhv.co.za



Legend - Sensitive Features

- Delineated Watercourses
- Tributary Floodlines
 - 1:10 year floodline
 - 1:20 year floodline
 - 1:50 year floodline
 - 1:100 year floodline
 - Indicative Floodline (15m Buffer)
- 100m Zone of Regulation (GN509)
- 32m Zone of Regulation (NEMA)
- Heritage Points
- Heritage Sites
- Avifaunal High Sensitivity - Riparian Corridors and Waterbodies
- Sekhukhune Bioregional Plan
 - CBA Class
 - CBA1
 - CBA2

Source: Esri, DigitalGlobe, GeoEye, Earthstar Geographics, CNES/Airbus DS, USDA, USGS, AeroGRID, IGN, and the GIS User Community

**Appendix B:
Pre-application Minutes and Approval of Public
Participation Plan**

Minutes

**Royal HaskoningDHV (Pty) Ltd
Southern Africa**

Present: Malcolm Roods (MR-Royal HaskoningDHV);
Prashika Reddy (PR-Royal HaskoningDHV);
Seshni Govender (SG-Royal HaskoningDHV);
Phillip Konig (PK-Royal HaskoningDHV);
Rinesh Singh (RK-Royal HaskoningDHV);
Willem Den Heijer (WDH-Samancor Chrome Limited);
Heather Booysen (HB-Samancor Chrome Limited);
Winnie Tebogo Mabena (WTM-Department of Forestry, Fisheries and the Environment);
Samkelisiwe Dlamini (SD-Department of Forestry, Fisheries and the Environment)

Apologies: Masina Litsoane (DFFE)

From: Seshni Govender

Date: 11 June 2021

Location: Various Locations-Virtual Meeting via Microsoft Teams

Copy:

Our reference: MD5462-RHD-ZZ-XX-MI-YE-0001

Classification: Project related

Enclosures: Public Participation Plan and Presentation

Subject: **Department of Forestry, Fisheries and the Environment Pre-application meeting - Samancor 60MW PV Plant Project**

Number

Details

1

Welcome and Introduction:

MR welcomed everyone and a round of introductions was done.
One apology was noted for Masina Litsoane.

2

Purpose of the Meeting:

- a) Present the project background and scope to the Department of Forestry, Fisheries and the Environment (DFFE)
- b) Communicate project timelines with the DFFE
- c) Seek clarity on aspects of uncertainty

3

Background:

- Samancor Chrome invited proposals for the design, supply, delivery, erection, testing, commissioning, operation and maintenance of a PV solar-based power plant facility at their Tubatse Ferrochrome Smelter in Steelpoort (Limpopo) on a Build, Own, Operate and Maintain (BOOM) basis. It is Samancor's intent to sign a Power Purchase Agreement (PPA) with a successful bidder(s)
- A high-level desktop Environmental Screening Investigation (ESI) of twelve (12) sites were undertaken (also utilising the DFFE screening tool) to investigate the environmental sensitivities, opportunities and constraints and 5 sites were identified for further assessment

Number

Details

- The PV plant will consist of the following infrastructure:
 - Solar PV panels that will be able to deliver up to 60MWp to the Samancor grid
 - Inverters that convert direct current (DC) into alternating current (AC)
 - Transformer/s and transformer substations
 - Instrumentation and Control
 - Ancillary infrastructure – 33kV powerlines, switchgear substation at the Tubatse East and West substations, battery energy storage systems (BESS), internal access roads, construction laydown area(s), fencing and access control
- Listing Notices:
 - LN 1 Activities: 9,11,12,19, 24, 56
 - LN 2 Activities: 1, 4, 15
 - LN 3 Activities: 4 (e) (i), 10 (e) (i), 14 (e) (i)
- Samancor will also be applying for a Water Use Authorisation from the Department of Human Settlements, Water and Sanitation (DHSW&S)-
- Possible Water Use Triggers:
 - Section 21 a- Taking water from a water resource
 - Section 21 c & i- impeding of diverting the flow of water in a watercourse

4

Discussion:

- MR enquired about the approval of the Public Participation (PP) plan, SD stated that the PP plan will be commented on and approved with the minutes of the pre-application meeting. HB further enquired about the running of the PP process whether the PP plan will need to be approved prior to the commencement of the PP process, SD confirmed that the PP plan needs to be approved first.
- MR stated that the project is expected to require biodiversity offsets and what are the departmental requirements in this regard? SD stated that this is still something the DFFE is working on and that the Biodiversity and Conservation Unit are not as active in this discussion at the moment. SD stated on a previous project the way that it has been handled has not been necessarily the correct way as it should be handled during the EA decision making process rather than a post EA exercise.
- PR enquired whether a high-level plan/strategy can be provided which the Department can comment on, SD stated that this could be done but she will need to consult internally.
- SD further recommended that consultation with the relevant conservation authority in Limpopo be undertaken to ensure that their requirements are met as DFFE is not the custodian of the Biodiversity Offsets but rather has an overseeing function.
- PR asked whether the Draft Offset Policy has been gazetted, SD stated that it has not been gazetted.
- MR enquired in terms of interpreting the Listing Notice 3 (LN3) activities, there is provision for both the Conservation Plan (c-plan) and the Bioregional Plan (BRP), In Limpopo the C-plan was gazetted in 2013 whereas the BRP was subsequently gazetted in 2018 and is a more refined and accurate representation of the biodiversity conditions. MR enquired whether the DFFE comfortable with basing the interpretation of the LN3 according to the BRP (2018) as the BRP supercedes the Conservation Plan and is more refined/updated in terms of ESA and CBA

Number

Details

areas? SD stated that she is tentatively comfortable with this but will consult internally and provide feedback if required.

- MR enquired if the Generic Environmental Management Programme (EMPr) for the powerline or substation is required. SD confirmed that the Generic EMPr for the Powerline is applicable and if there are any upgrades to the substation then the Generic EMPr for the substation will also need to be compiled
- MR enquired if the specialist assessments needs to be appended to the Scoping report. SD stated that it is not required, the scoping report should list the relevant specialist reports though
- PR enquired about the requirements of a site visit which is usually done during the Environmental Impact Assessment Phase. SD stated that the Department hasn't been conducting site visits due to Covid-19 up until recently, SD stated that it's not always necessary to conduct site visits for project, SD will have to consult with manager and then can determine if a site visit is required at a later stage.
- SD wanted clarity on whether all 5 sites will be used. PK stated that they are currently looking at all 5 sites as all the sites will be needed to obtain the 60MWp peak output, PK further stated that the 'packing' of the sites will be determined by the technology used and usually the installed capacity is greater than then what is required to obtain the 60MWp.

5

Way Forward:

- Approval of PP Plan
- Public Participation period- 25 June-26 July
- Current programme indicates submission of final EIR/EMPr to be submitted to DFFE before December 2021 break
- Consultation with DSHW&S on WULA requirements

DECLARATION	
I declare that the information indicated above is an accurate depiction of the issues raised and discussed in the pre-application meeting:	
for the Department of Forestry, Fisheries and the Environment:	
Name:	
Signed:	Date:
for Royal HaskoningDHV:	
Name:	
Signed:	Date:

Pre-application meeting - Samancor 60MW PV Plant Project

Environmental Impact Assessment

11 June 2021



AGENDA

- Welcome & Introduction
- Background of the Project
- Project Description
- Project Alternatives
- Environmental Regulatory Process
- Project & Specialist Team
- Specialist Assessments
- Clarification Items
- Way Forward



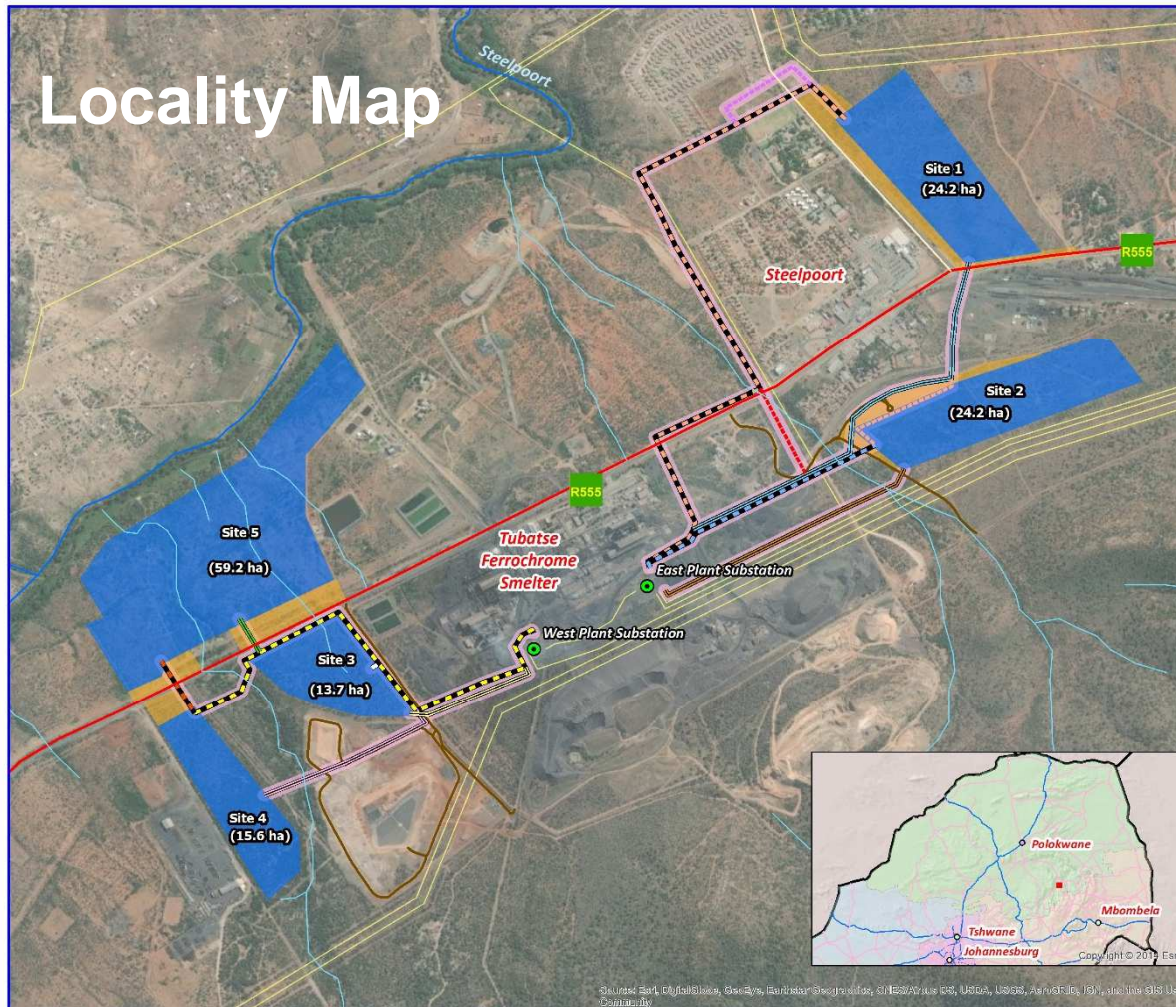
Welcome and Introduction

- Purpose of the Meeting
 - a) Introduce the team working on the project
 - b) Present the project background and scope to the Department
 - c) Communicate project timelines with the Department
 - d) Seek clarity on aspects of uncertainty

Background of the project

- Samancor Chrome invited proposals for the design, supply, delivery, erection, testing, commissioning, operation and maintenance of a PV solar-based power plant facility at their Tubatse Ferrochrome Smelter in Steelpoort (Limpopo) on a Build, Own, Operate and Maintain (BOOM) basis. It is Samancor's intent to sign a Power Purchase Agreement (PPA) with a successful bidder(s)
- A high-level desktop Environmental Screening Investigation (ESI) of twelve (12) sites were undertaken (also utilising the DFFE screening tool) to investigate the environmental sensitivities, opportunities and constraints and 5 sites were identified for further assessment

Locality Map



EIA for the proposed 60MWp Photovoltaic Power Plant at the Tubatse Ferrochrome Smelter, Steelpoort

LOCALITY

Legend

- Proposed Development Sites
 - Existing Exskom Power Lines
- Proposed Power Lines**
- | Name |
|--------------------------------|
| Site 1 33kV line |
| Site 1 33kV line Alternative A |
| Site 1 33kV line Alternative B |
| Site 1 33kV line Alternative C |
| Site 2 33kV line |
| Site 2 33kV line Alternative |
| Site 3 33kV Alternative |
| Site 3 33kV line Link |
| Site 4 33kV line |
| Site 4 33kV line Alternative |
| Site 5 33kV line |
| Site 5 33kV line Alternative |
- Power Lines - 50m Assessment Corridors
- Roads**
- | Class |
|--------------------------------------|
| Provincial |
| Secondary tar |
| Existing Site Access Roads |
| New 60m Access Road Assessment Areas |
| Rivers |
| Watercourses |



Date: 21 May 2021
 Created by: Paul de Cruz
 RHCIV Ref: MD5462

Coordinate System: Custom
 Datum: WGS 1984
 Units: Degree

Data Sources:
 zfile
 MCB
 DTI

Tel: +27 (0) 11 798 6425
 Fax: +27 (0) 11 798 6005
 www.haskoning.co.za

Royal HaskoningDHV

Project Description

- The PV plant will consist of the following infrastructure:
 - Solar PV panels that will be able to deliver up to 60MWp to the Samancor grid
 - Inverters that convert direct current (DC) into alternating current (AC)
 - Transformer/s and transformer substations
 - Instrumentation and Control
 - Ancillary infrastructure – 33kV powerlines, switchgear substation at the Tubatse East and West substations, battery energy storage systems (BESS), internal access roads, construction laydown area(s), fencing and access control

Project Alternatives

- Site alternatives – no alternatives, all 5 potential sites will be developed
- Fixed vs tracking systems
- Monofacial and bifacial panels
- Grid infrastructure (33kV overhead powerline alternatives)
- BESS (expected to be either lead-acid or lithium-ion)

Environmental Regulatory Process

Scoping & EIA study in terms of EIA Regulations, 2014 (as amended in 2017) promulgated under the National Environmental Management Act (No. 107 of 1998)

Competent Authority: Dept of Forestry, Fisheries & Environment (DFFE)

GA/WULA is required in terms of National Water Act (No. 36 of 1998)

Competent Authority: Dept of Human Settlements, Water & Sanitation (DHSW&S)

Environmental Authorisation & WULA / GA

Environmental Regulatory Process: EIA Triggers

Listing Notice	Activity Description
1: Activity 9	The development of infrastructure exceeding 1,000m in length for the bulk transportation of water or stormwater – (i) with an internal diameter of 0.36 m or more; or (ii) with a peak throughput of 120 l/s or more
1: Activity 11	The development of facilities or infrastructure for the transmission and distribution of electricity – (i) outside urban areas or industrial complexes with a capacity of more than 33 but less than 275kV; or (ii) inside urban areas or industrial complexes with a capacity of 275kV or more
1: Activity 12	The development of – (ii) infrastructure or structures with a physical footprint of 100m ² or more; where such development occurs – within a watercourse; or (c) if no development setback exists, within 32m of a watercourse, measured from the edge of a watercourse
1: Activity 19	The infilling or depositing of any material of more than 10m ³ into, or the dredging, excavation, removal or moving of soil, sand, shells, shell grit, pebbles or rock of more than 10m ³ from a watercourse
1: Activity 24	The development of a road - (i) for which an environmental authorisation was obtained for the route determination in terms of activity 5 in Government Notice 387 of 2006 or activity 18 in Government Notice 545 of 2010; or (ii) with a reserve wider than 13,5 meters, or where no reserve exists where the road is wider than 8 metres

Environmental Regulatory Process: EIA Triggers

Listing Notice	Activity Description
1: Activity 28	Residential, mixed, retail, commercial, industrial or institutional developments where such land was used for agriculture, game farming, equestrian purposes or afforestation on or after 01 April 1998 and where such development: (i) will occur inside an urban area, where the total land to be developed is bigger than 5 ha; or (ii) will occur outside an urban area, where the total land to be developed is bigger than 1 ha; excluding where such land has already been developed for residential, mixed, retail, commercial, industrial or institutional purposes.
1: Activity 56	The widening of a road by more than 6m, or the lengthening of a road by more than 1km – (i) where the existing reserve is wider than 13.5m; or (ii) where no reserve exists, where the existing road is wider than 8m; excluding where widening or lengthening occur inside urban areas
2: Activity 1	The development of facilities or infrastructure for the generation of electricity from a renewable resource where the electricity output is 20MW or more
2: Activity 4	The development and related operation of facilities or infrastructure, for the storage, or storage and handling of a dangerous good, where such storage occurs in containers with a combined capacity of more than 500m ³
2: Activity 15	The clearance of an area of 20ha or more of indigenous vegetation
10	

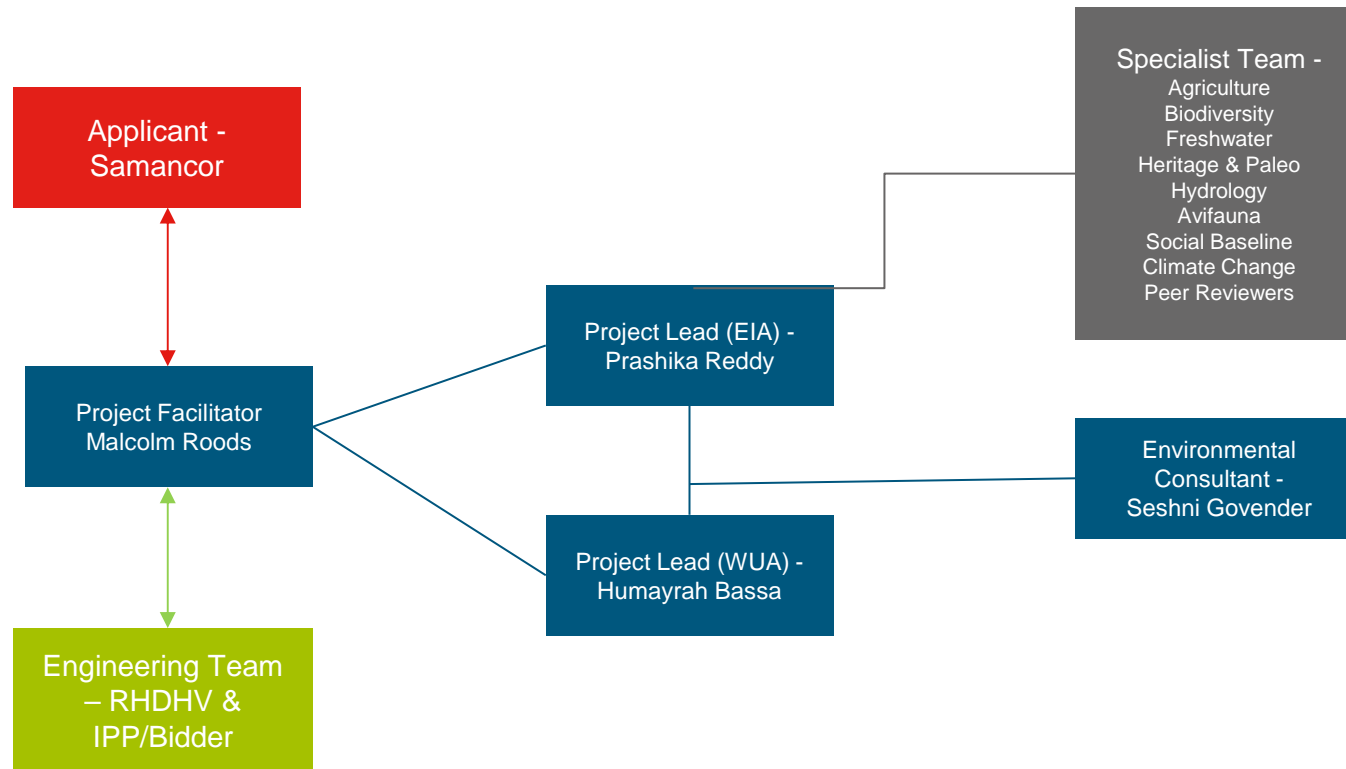
Environmental Regulatory Process: EIA Triggers

Listing Notice	Activity Description
3. Activity 4 (e) (i)	The development of a road wider than 4 m with a reserve less than 13.5 m
3: Activity 10 (e) (i)	The development and related operation of facilities or infrastructure for the storage, or storage and handling of a dangerous good, where such storage occurs in containers with a combined capacity of 30 but not exceeding 80m ³
3. Activity 12 (e)	The clearance of an area of 300 m ² or more of indigenous vegetation
3. Activity 14 (e) (i)	The development of - (ii) infrastructure or structures with a physical footprint of 10 m ² or more; where such development occurs - (a) within a watercourse; (c) if no development setback has been adopted, within 32 m of a watercourse, measured from the edge of a watercourse

Environmental Regulatory Process: WULA Triggers

Section 21 Water Uses	Description
Section 21 (a)	<p>Taking water from a water resource:</p> <ul style="list-style-type: none">• Possible existing Samancor WUL amendment to ensure for water provision from the Tubatse Smelter to the PV plant
Section 21 (c) & (i)	<p>Impeding or diverting the flow of water in a watercourse:</p> <ul style="list-style-type: none">• Applicable to any infrastructure (e.g. pump in the Steelpoort River or any other associated infrastructure like pipelines) within the 1:100 year floodline of a river

Project & Specialist Team



Specialist Assessments

Theme	Very High sensitivity	High sensitivity	Medium sensitivity	Low sensitivity
Agriculture Theme		X		
Animal Species Theme			X	
Aquatic Biodiversity Theme				X
Archaeological and Cultural Heritage Theme	X			
Avian Theme		X		
Bats Theme				X
Civil Aviation (Solar PV) Theme			X	
Defence Theme				X
Landscape (Solar) Theme	X			
Paleontology Theme		X		
Plant Species Theme			X	
RFI Theme			X	
Terrestrial Biodiversity Theme	X			

Clarification items

- Comments / approval of DFFE Public Participation Plan
- We expect biodiversity offsetting to take place - any specific departmental requirement in this regard?
- BRP (2018) says ESA1 but C-Plan (2013) shows sites in CBA. Confirm that we use BRP designation as it supercedes C-Plan? The decision on what plan we use has an impact on which of the LN3 activities we apply for
- EMPr – Generic EMPr for the powerline and potentially Generic EMPr for the substation based on any upgrades
- Specialist assessments – must they be appended to the ESR?



Way Forward

- Pre-application consultation with the DHSW&S regarding the Water Use Authorisation requirements to be undertaken
- Scoping Report Public review (proposed for 25 June – 26 July)
- As per our current programme we aim to submit the final EIR / EMP_r to the Department before the December 2021 break

Department of Forestry, Fisheries and the Environment
(DFFE)
Integrated Environmental Authorisations
Attn: To be confirmed

ROYAL HASKONINGDHV (PTY) LTD

21 Woodlands Drive
Building 5
Country Club Estate
Woodmead
Johannesburg
2191

+27 87 352 1500 **T**
+27 11 798 6005 **F**
Johannesburg@rhdhv.com **E**
royalhaskoningdhv.com **W**

Date:	20 May 2021	Contact name:	Malcolm Roods
Your reference:		Telephone:	[REDACTED]
Our reference:	MD5462-RHD-ZZ-XX-CO-YE- 0001	Email:	[REDACTED]
Classification:	Project related		

Public Participation Plan: Environmental Authorisation for the 60MWp Photovoltaic Plant associated with the Tubatse Ferrochrome Smelter, Steelpoort, Fetakgomo Tubatse Local Municipality

Dear Sirs/Mams

The rising electricity tariffs in South Africa, combined with the load shedding patterns experienced across the country, has a negative impact on the production and revenue of the Samancor business. This has motivated Samancor to consider renewable energy generation at their smelter plants. Implementing solar PV generation will result in improved availability of supply and reduced utility bills, especially since a major portion of the Samancor product is being exported. A PV plant converts the solar radiation into electric energy by using photovoltaic solar arrays. The name plate rating of the plant will be a minimum of 60 MWp, which will be spread over several sites surrounding the Tubatse Ferrochrome mining operations.

Each of the PV plants will consist of the following infrastructure:

- Solar PV panels that will be able to deliver up to 60MWp to the Samancor grid;
- Inverters that convert direct current (DC) generated by the PV modules into alternating current (AC) to be exported to the electrical grid;
- Transformer /s that raises the system AC low voltage to medium voltage. The transformer converts the voltage of the electricity generated by the PV panels to the correct voltage for delivery to Eskom;
- Transformer substation; and
- Instrumentation and Control consisting of hardware and software for remote plant monitoring and operation of the facility.

Associated infrastructure includes:

- Mounting structures for the solar panels in a fixed tilt of rotating tracking configuration;
- Cabling between the structures, to be lain underground where practical;

- New 33kV overhead powerlines between the various sites and the Tubatse East and -West substation buildings;
- Local substation and transformer yard at each PV site;
- Containerized switchgear substation at Tubatse East and -West MV substations for connecting to the Tubatse substation busbars;
- Water provision infrastructure (i.e. pipeline/ s, storage tank/ s, etc.) for PV panel cleaning;
- Battery Energy Storage System (BESS); and
- Internal access roads (4 - 6m wide roads will be constructed, but existing roads will be used as far as possible), fencing (approximately 3m in height), gates and access control.

As per Government Gazette 43412 GN R. 650 Disaster Management Act (57/2002): Directions Regarding Measures to Address, Prevent and Combat the Spread of COVID-19 Relating to National Environmental Management Permits and Licences: Annexure 2 and 3 published on 5 June 2020, the DFFE requires a Public Participation (PP) Plan to be approved for an application for Environmental Authorisation that requires public participation.

PP is a process that is designed to enable all Interested and Affected parties (I&APs) to voice their opinion and/or concerns which enables the practitioner to evaluate all aspects of the proposed development, with the objective of improving the project by maximising its benefits while minimising its adverse effects.

I&APs include all interested stakeholders, technical specialists, and the various relevant organs of state who work together to produce better decisions.

The primary aims of the PP process are:

- to inform I&APs and key stakeholders of the proposed application and environmental studies;
- to initiate meaningful and timeous participation of I&APs;
- to identify issues and concerns of key stakeholders and I&APs with regards to the development;
- to promote transparency and an understanding of the project and its potential environmental (social and biophysical) impacts (both positive and negative);
- to provide information used for decision-making;
- to provide a structure for liaison and communication with I&APs and key stakeholders;
- to ensure inclusivity (the needs, interests and values of I&APs must be considered in the decision-making process);
- to focus on issues relevant to the project, and issues considered important by I&APs and key stakeholders; and
- to provide responses to I&AP queries.

The public participation process must adhere to the requirements of Regulations 41 and 42 (GN R.326). Further, a Public Participation guideline in terms of NEMA was issued by the DFFE in 2017, of which provisions will also be implemented.

PUBLIC PARTICIPATION PLAN

1. Identification of I&APs

An I&AP database is already available due to previous projects undertaken. The I&AP database will be updated with new I&APs requesting to be registered and will be maintained throughout the duration of the project. All registered I&APs on the database will be informed of the project, review period as well as outcome of the decision issued by DFFE.

2. Advertisement

In compliance with the EIA Regulations 2014 (as amended in 2017), notification of the draft Consultation Environmental Scoping Report (ESR) and draft Environmental Impact Report (EIR) will be advertised in the local newspaper in the Steelpoort area. Two rounds of advertisements will take place (one in the Scoping phase and one in the EIA phase) in English.

3. Site Notices

The NEMA EIA Regulations 2014 (as amended in 2017) require that a site notice be fixed at a place conspicuous to the public at the boundary or on the fence of the site where the activity to which the application relates is to be undertaken and on any alternative sites. The purpose of this is to notify the public of the proposed project and to invite the public to register as stakeholders and inform them of the PP Process. Site Notices were placed at the Tubatse Chrome Golf Club, Steelpoort Primary School, Post Office and the proposed Site 3.

4. Public Review of the Draft Consultation Environmental Scoping Report (ESR)

The draft consultation Environmental Scoping Report (ESR) will be made available electronically for a public review period of 30-days, via the Royal HaskoningDHV Website:

<https://www.royalhaskoningdhv.com/en/south-africa/projects/environmental-reports>.

At the time of compilation of this document adjusted level 1 Covid-19 restrictions are in place, therefore it has been proposed that copies of the draft consultation ESR will also be made available at the Fetakgomo Tubatse Municipality Public Library and Municipal Offices and the Tubatse Ferrochrome Smelter offices. These locations have been chosen as they are required to ensure that Covid-19 regulations and protocols are in place according to the Disaster Management Act, 2002,

Should the Covid-19 restrictions increase, the PP Plan will be adjusted with guidance from the DFFE to accommodate these restrictions whilst ensuring a robust and transparent process is conducted.

Limited electronic copies will be distributed to stakeholders who specifically request a copy.

5. Public Review of the Draft Consultation Environmental Impact Report (EIR) and Environmental Management Programme (EMPr)

The draft consultation Environmental Impact Report (EIR) and EMPr will be made available electronically for a public review period of 30-days, via the Royal HaskoningDHV Website:

<https://www.royalhaskoningdhv.com/en/south-africa/projects/environmental-reports>.

At the time of compilation of this document adjusted level 1 restriction covid-19 restrictions are in place, therefore it has been proposed that copies of the draft consultation EIR and EMPr be made available at the Fetakgomo Tubatse Municipality Public Library and Municipal Offices and the Tubatse Ferrochrome Smelter offices. These locations have been chosen as they are required to ensure that Covid-19 regulations and protocols are in place according to the Disaster Management Act, 2002, at the time of compilation of this document adjusted level 1 restrictions are in place.

Should the covid-19 restrictions increase, the PP Plan will be adjusted with guidance from the DFFE to accommodate these restrictions whilst ensuring a robust and transparent process is conducted.

Limited electronic copies will be distributed to stakeholders who specifically request a copy.

6. Meetings

A public participation meeting and two Focus Group Meetings will be conducted in the EIA Phase only, the venue will be chosen taking into consideration the Covid-19 regulations as stipulated in the Disaster Management Act, 2002.

7. Comments and Responses Report (CRR)

A CRR will be compiled with any comments and issues received and responded to which will form part of the submission of the final consultation ESR and EIR.

Comments must be forwarded either via email, letter, by hand or via phone calls (documented in a letter or email thereafter) to:

Seshni Govender
PO Box, 867, Gallo Manor, 2052
Tel: 087 352 1592, Email: Seshni.govender@rhdhv.com

8. Environmental Authorisations

On receipt of the EA (positive or negative) for the proposed project, I&APs registered on the project database will be informed of this decision and its associated terms and conditions as well as the appeal process by email correspondence. An advert will be placed in the local newspaper in the Steelpoort area notifying I&APs of the decision.

Kind Regards

Malcolm Roods
EAP

From: Samkelisiwe Dlamini [REDACTED]
Sent: Friday, June 18, 2021 10:25 AM
To: Malcolm Roods [REDACTED]
Cc: Masina Litsoane [REDACTED]
Subject: PP Plan for the PV

Dear Malcolm

THE public participation plan for the 60MWp Photovoltaic Plant associated with the Tubatse Ferrochrome Smelter, Steelpoort, Fetakgomo Tubatse Local Municipality and received on the 11 June 2021 refers.

The Department has evaluated the Public Participation Plan which is submitted as per Minister Directive dated 05 June 2020 in response to Covid-19 pandemic and hereby approves the plan for the abovementioned project.

Please ensure that all correspondence to be sent to I&APs must clearly specify the dates when comments on the report should be submitted. Further, should there be a need to for a meetings from I&APs, the meeting can take place via virtual platforms such as Microsoft Teams.

You may proceed with the public participation process in accordance with the tasks contemplated in the PPP plan. Should you wish to deviate from the submitted PPP Plan, the amended PPP Plan must be submitted to the Department for approval prior commencement.

You are hereby reminded of Section 24F of the National Environmental Management Act 1998 (Act No. 107 of 1998), as amended, that no activity may commence prior to an Environmental Authorization being granted by the Department.

Please note that the minutes of the meeting reflect what was discussed on the meeting. Further, the approach in terms of Listing Notice 3 (LN3) activities is accepted as D: Biodiversity & Conservation stated "That approach is supported because of the latest status of the information then we get accurate information compared using old CBA and ESA data".

Do not hesitate to contact me if you need further clarity

Regards

Samke

Ms Samkelisiwe Dlamini
National Infrastructure Projects

Department of Forestry, Fisheries and the Environment
473 Steve Biko Road
Arcadia
Tel: 012 399 9379
Cell: 0727667508

Disclaimer

This message and any attachments transmitted with it are intended solely for the addressee(s) and may be legally privileged and/or confidential. If you have received this message in error please destroy it and notify the sender. Any unauthorized usage, disclosure, alteration or dissemination is prohibited. The Department of Environmental Affairs accepts no responsibility for any loss whether it be direct, indirect or consequential, arising from information made available and actions resulting there from. The views and opinions expressed in this e-mail message may not necessarily be those of Management..

**Appendix C:
Peer Review of the Environmental Scoping
Report**



W & L CONSULTANTS

REG. NO. CK 89/020810/23

17 June 2021

Royal HaskoningDHV

78 Kalkoen Street

Fountain Square

Monument Park Ext 2

Pretoria

0181

Attention: Prashika Reddy

Dear Prashika,

PEER REVIEW OF THE DRAFT SCOPING REPORT COMPILED FOR THE SAMANCOR 60MW PHOTOVOLTAIC (PV) PROJECT

I herewith confirm that the above information was reviewed as per the requirements stipulated by Royal HaskoningDHV in the letter of appointment received on 15 April 2021.

SECTION A: DECLARATION OF INTEREST

- Declaration of Interest: I, Liselle van Niekerk of W & L Consultants Cc, declare that I:
 - Have independently peer-reviewed the documentation, and other than fair remuneration for work performed in terms of this application, have no business, financial, personal or other interest in the activity or application and that there are no circumstances that could have compromised my objectivity and independence when assessing said documentation;
 - Am fully aware of and meets all the requirements of Regulation 13, and that failure to comply with any of the requirements may result in disqualification;
 - Have reviewed all the work (mentioned above) undertaken by the EAP;
 - Will disclose, to the applicant, the EAP, other specialist (if any), the Department and interested and affected parties, all material information that has or may have the potential

to influence the decision of the Department or the objectivity of any report, plan or document prepared or to be prepared as part of the application; and

- Am aware that a false declaration is an offence in terms of regulation 48 of the 2014 NEMA EIA Regulations.

SECTION B: COMMENTS

B.1 Legislative Context and Process

An Environmental Impact Assessment process is undertaken as per the EIA Regulations, 2014 (amended) and the National Environmental Management Act, 1998 (Act No. 107 of 1998) (as amended). Listed activities listed in Notice 1, - 2 and – 3 were identified. The following represents a summary of the listed activities:

- Listing Notice 1: Activities 9, 19, 24, 28 & 56
- Listing Notice 2: Activities 1, 4 & 15 and
- Listing Notice 3: Activity 10 (e) (i)

The EIA process is divided into two phases with phase one (1) being the circulation & submission of the environmental scoping report and plan of study for environmental impact assessment. The latter being the subject of this phase of the peer review process.

Findings:

The legislative framework provided was comprehensive and included all relevant Provincial - and National Acts, Frameworks and Policies.

- The public participation process adheres to the requirements of Regulations 41 and 42 (GNR 326) (amended). The report further indicates that the additional guidelines issued by the DFFE in 2017, will be implemented.

B.2 Project Description & Receiving Environment

- Overall, the project is well described and presented in the report.
- The environment to be affected and the baseline were generally well described.
- Impact identification and scoping are well conducted.
- The baseline information presented, is accurate and of good quality, resulting in good quality impact identification, as tabled in the report.
- No location alternatives were presented. The five (5) sites identified were viewed as the most feasible sites for the proposed activity. Technology and process alternatives were provided and will be discussed and assessed in the impact assessment report.
- The No-go option was clearly motivated.

B.3 Plan of Study for Environmental Impact Assessment and Impact Identification & Assessment

- The plan of study is comprehensive. It unpacks the EIA phase which is phase two of the process.
- Impacts were identified and the various specialist studies required to assess the potential impacts were listed. Quality specialist studies are important as the availability of good quality data and information, results in good quality impact identification and mitigation.
- Risks associated with potential impacts and mitigation measures were presented. Impacts and mitigation measures are project specific and concise.
- Due to the nature of the activity, the extent of the development footprint as well as the close proximity to sensitive receptors, it is suggested that a visual impact assessment be undertaken for this activity.

SECTION C: CONCLUSIONS & RECOMMENDATIONS

The aim of a Scoping Report is to identify the priority issues from a broader range of potential impacts and issues, for assessment in the Environmental Impact Assessment phase (Phase 2). The Scoping Report and Plan of Study for Environmental Impact Assessment translates EIA policy and regulations into practice. It is concluded that the scoping report presented for review achieves this objective, and that the EAP can commence with the EIA phase of the project.

I trust the above is satisfactory. Feel free to contact me if you have any questions regarding the above.

Kind Regards,



LISELLE VAN NIEKERK

Reg. EAP (EAPASA: 2020/1047)

M Sc Environmental Management (UJ)

Appendix D: EAPs CV



Curriculum Vitae

Prashika Reddy

Road and Rail

Senior Environmental Scientist

E: [REDACTED]

T: [REDACTED]

M: [REDACTED]

Prashika started her career in the environmental field after spending 5 years' working for the Department of Agriculture: Genetic Resources Directorate. She is a Senior Environmental Scientist in the Environmental Management and Planning Unit within the Roads and Rail Advisory Group. In 2010, she obtained her professional registration as a Natural Scientist in the field of Environmental Science. She is a registered Environmental Assessment Practitioner with EAPASA.

Prashika has built up an impressive résumé, having worked on diverse projects mainly in the petrochemical industry, as well as various large-scale power generation projects. She has established good working relationships with key clients and has undertaken several flagship projects on their behalf, such as Sasol and Eskom's Underground Coal Gasification project.

Years of experience

19

Years with Royal HaskoningDHV

14

Professional memberships

SA Council for Natural Scientific Professions, Pr Sci Nat, 400133/10

EAPASA, Registered EAP, 2019/917

Qualifications

1999: Bachelor of Science Honours: Botany, University of KwaZulu-Natal

2006: Bachelor of Science Honours: Geography (with distinction), University of Pretoria

Professional experience

Environmental Impact Assessment (EIA), Waste Management Licence and Integrated Water Use Licence for the Underground Coal Gasification (UCG) Project and associated infrastructure in support of co-firing of gas at the Majuba Power Station, Mpumalanga, South Africa, South Africa

Start Date: 2008 - 2015

Client Name: Eskom Holdings SOC Ltd

Project Value: R 5,900,000

Eskom Holdings (SOC) Ltd appointed Royal HaskoningDHV to undertake the integrated environmental authorisation process, as well as the integrated Water Use Licence, for the UCG pilot project and associated infrastructure in support of co-firing of gas at the Majuba Power Station. UCG is a process whereby coal is converted in situ into combustible gas that can be used for power generation and is one of the new clean coal technologies being developed for implementation by Eskom that intends to diversify Eskom's fuel supply.

Position: Project Manager

Assigned Tasks: Project management, client liaison, compilation of environmental reports, management of the specialist team, authority consultation and co-management of the public participation process

Integrated Environmental Authorisations for the proposed Concentrated Solar Power (CSP) Plants on the farm Sand Draai, Northern Cape Province

Start Date: 2014 - 2016

Client Name: Solafrika Energy (Pty) Ltd

Project Value: R 1,500,000

Solafrika appointed Royal HaskoningDHV to undertake the integrated environmental authorisation and waste licence processes for two CSP plants (central receiver and parabolic trough) with an electricity generation capacity of between 100 - 150MW to be constructed on the farm Sand Draai, Upington.

Position: Environmental Scientist

Assigned Tasks: Compilation of environmental reports

Environmental Impact Assessment for the Pumped Storage Power Generation Facility in the Steelpoort area, Mpumalanga and Limpopo Provinces

> Start Date: 2005 - 2007

> Client Name: Eskom Holdings SOC Ltd

> Project Value: R 1,300,000

As part of the increased electricity supply plan, Eskom will be constructing a Pumped Storage Scheme (PSS) in the Steelpoort area, Limpopo and Mpumalanga Provinces. It is planned that the scheme will have an installed capacity of approximately 1520MW. The proposed scheme consists of the following components: upper and lower reservoirs; underground power house complex and associated waterways that link the reservoirs; and ancillary works.

Position: Project Manager

Assigned Tasks: Completion of the EIA study and reports (EIA Report and EMP), project management, client liaison, management of the specialist team, authority consultation and co-management of the public participation process

Basic Assessment Study for Eight New PV Developments on the Farm Bokpoort, Groblershoop

Start Date: 2019

Client Name: ACWA Power Africa Holdings (Pty) Ltd

Project Value: R 966,123

Due to the changes in the Integrated Resource Plan published in October 2019, ACWA Power intend replacing the authorised CSP site with 8 new PV plants. The updated layout has been revised to incorporate the 8 new PV plants of 200MW each, covering a total of 1200ha (i.e. 150ha for each plant) on Remaining Extent of the Farm Bokpoort 390.

Position: Environmental Scientist and Project Manager

Assigned Tasks: Compilation of environmental reports and project management

Basic Assessment Study for Seven 9.9MW Internal Combustion Engines (ICE) at the Previously Authorised PV Developments on the Farm Bokpoort, Groblershoop

Start Date: 2020

Client Name: ACWA Power Africa Holdings (Pty) Ltd

Project Value: R 153 000

Recently, the Department of Mineral Resources and Energy issued a Request For Proposal (RFP) to which ACWA Power will be participating. A condition in the RFP requires Bidders to not tap into the national grid for power and requires that a reliability test be undertaken at specified generation rate and time. In meeting the RFP requirements, ACWA Power has decided to supplement their already authorised project infrastructure by the addition of ICE infrastructure in the projects to be bid.

Position: Environmental Scientist and Project Manager
Assigned Tasks: Compilation of environmental reports and project management

Environmental Screening Investigation for the Establishment of a Solar Based Electricity Generation System on a Build, Own, Operate and Maintain Basis – 118MW Photovoltaic Plant at the Tubatse Chrome Plant, Steelpoort, Limpopo

Start Date: 2020

Client Name: Samancor Chrome

Project Value: R 146 000

As part of the Transaction Advisory Services, Royal HaskoningDHV's Environmental Management and Planning (EM&P) Knowledge Group have been appointed to conduct a high-level desktop Environmental Screening Investigation (ESI) of twelve (12) sites to investigate the environmental sensitivities, opportunities and constraints associated with the proposed project for the proposed 118MW PV plant at the Tubatse Chrome Plant in the Steelpoort area, Limpopo Province.

Position: Environmental Scientist

Assigned Tasks: Compilation of environmental reports and project management

Environmental Impact Assessment (EIA), Waste Management Licence and Integrated Water Use Licence for the Matimba Power Station Ash Disposal Facility, South Africa

Start Date: 2012 - 2016

Client Name: Eskom Holdings SOC Ltd

Project Value: R 5,800,000

Approximately 4.8 million tons of ash is produced annually from the Matimba Power Station. This ash is currently being disposed by means of 'dry ashing' ~3km south of the power station. The proposed ash disposal facility will ensure that the power station is able to accommodate the 'ashing' requirements for the remaining life (approximately 44 years) of the Power Station.

Position: Environmental Scientist, Project Manager

Assigned Tasks: Compilation of environmental reports (EIA Report and EMPr), project management, management of the public participation process and specialist team

Charlie 1 Landfill Stormwater Management & Optimisation Project, Sasol Secunda, South Africa

Start Date: 2015 - 2016

Client Name: Sasol Chemical Industries (Pty) Ltd

Project Value: R 735,000

The Sasol Synfuels, Secunda, Charlie 1 landfill site was authorised in 1993 as a Class II Site, in terms of the Environmental Conservation Act (ECA) (Act No. 73 of 1989). Recent legislation changes such as the National Environmental Management: Waste Act, 2008 (Act No. 59 of 2008) and the new Waste Classification and Management Regulations, August 2013 (GN 634) have implications for the management of waste disposal sites. The latest audits conducted at Charlie 1 landfill site highlighted that the water management is not in accordance with the permit requirements. Therefore, the Pollution Control Dam (PCD) of approximately 16000m³ will be constructed to ensure compliance with the existing permit requirements. It will be constructed to ensure effective management of leachate and stormwater.

Position: Project Manager

Assigned Tasks: Project management

Scoping Study for the Full-Scale Composting of Sludge Waste Streams, South Africa

Start Date: 2014

Client Name: Sasol Chemical Industries (Pty) Ltd

Project Value: R 850,000

The proposed project involves constructing a full-scale composting site that will be able to handle approximately 200000 - 300000t/a of sludge generated at the Sasol Secunda plant.

Position: Project Manager

Assigned Tasks: Project management, quality review of Environmental Scoping Report and public participation documentation

Waste Management Licence for the BMW Waste Facility, South Africa

Start Date: 2010

Client Name: BMW SA (Pty) Ltd

Project Value: R 168,797

Position: Project Manager

Assigned Tasks: Project management, client management, authority consultation, report compilations and internal review of work

EIA and Water Use Authorisation for the Removal, Re-Instatement and Re-Positioning of Two High-Voltage Powerlines routed through the Devon Valley Landfill, Stellenbosch

Start Date: 2019

Client Name: Stellenbosch Municipality

Project Value: R 820,000

The Stellenbosch Municipality owns and operates the Stellenbosch Landfill situated off Devon Valley Road. The landfill comprises completed cells (cell 1 and 2) as well as an operating cell (cell 3). Cell 3 is separated from cells 1 and 2 by an area on the landfill property footprint that is used for access roads, entrance area and weighbridge, green waste chipping and rubble crushing and stockpiling activities. This area is also transversed by two high voltage Eskom powerlines. The presence of these powerlines prevents the Municipality from engineering and operating the area between completed cells 1 and 2 and operating cell 3 as waste disposal cells.

Position: Project Manager and Environmental Scientist

Assigned Tasks: Project management, compilation of environmental reports, management of specialist team

Site Clearance: Planning and Design for Maintenance and/or Upgrade of the Patrol Roads and Fencing on the Borders between RSA, Swaziland and Mozambique

Start Date: 2016

Client Name: Department of Public Works

Project Value: R 2,598,000

Undertake the Basic Assessment study, mining permitting as well as Water Use Licencing application processes associated with the border patrol road and fence.

Position: Project Manager

Assigned Tasks: Project management

Basic Assessment and Water Use Licence for the rehabilitation of the existing P236 gravel road from km6.235 to km14.0 in Ubombo, KwaZulu-Natal

Start Date: 2016

Client Name: KwaZulu-Natal Department of Transport

Project Value: R 546,186

This project is a rehabilitation of a portion of the existing P236 road from km6.235 to km14.0, where the surfaced width will be increased by 2.5m and where there are climbing lanes; the surfaced width will increase by 5.6m.

In areas where there will be horizontal curve widening, the width will be increased by 4.5m. Furthermore, existing culverts will be lengthened where required to accommodate the increase in the road bed width. A culvert at a stream crossing, is also planned to be replaced at km6.240 of the P236.

Position: Strategic Environmental Advisor

Assigned Tasks: Quality review of environmental reports and public participation documentation

Basic Assessment and Water Use Licence for the proposed bridge crossing over the uMfolozi River linking the Esiyembeni and Novunula areas within the Mtubatuba Local Municipality, KwaZulu-Natal

Start Date: 2016

Client Name: KwaZulu-Natal Department of Transport

Project Value: R 522,225

The KwaZulu-Natal Department of Transport (KZN DoT) is planning to construct a bridge over the uMfolozi River and associated link road that will serve to link the Esiyembeni and Novunula local communities situated on either side of the uMfolozi River which is currently impassable save for the existing N2 bridge crossing to the east near Mtubatuba.

Position: Strategic Environmental Advisor

Assigned Tasks: Quality review of environmental reports and public participation documentation

Basic Assessment for the construction of two 7km long 88kV Power Lines Grootpan / Brakfontein, South Africa

Start Date: 2015

Client Name: Eskom Holdings SOC Ltd

Project Value: R 458,021

The proposed project involves the construction of two (2) 7km 88kV power lines and dismantling of two (2) 88kV power lines from Grootpan to Brakfontein, south of Ogies in Mpumalanga.

Position: Project Principal

Assigned Tasks: Quality review and overall project management

Proposed Tinley Southbanks Beach Enhancement Project in the KwaDukuza Municipality, KwaZulu-Natal

Start Date: 2016

Client Name: Tongaat Hulett Developments (Pty) Ltd

Project Value: R 925,270

The Tinley Manor Southbanks development provides for the coastal resort, however, it does not provide for what is critical for the success of the resort and that is a safe swimming beach in close proximity to the resort. The lack of a safe swimming beach with public amenities adjacent the development was identified as a major constraint. This EIA is therefore targeted at dealing with this constraint and to enable the provision of a new beach resort that has all the requirements to be able to attract international investment, including specifically a safe, swimming beach.

Position: Strategic Environmental Advisor

Assigned Tasks: Provide strategic advice on project, review of environmental reports

Environmental Impact Assessment for the Cornubia Phase 2 Development, KwaZulu-Natal, South Africa

Start Date: 2012

Client Name: Tongaat Hulett Developments (Pty) Ltd

Project Value: R 989,660

Conduct a full Environmental Impact Assessment (EIA) for the proposed Cornubia Mixed Use Phased development - Phase 2 in Mount Edgecombe, KwaZulu-Natal.

Position: Strategic Environmental Advisor

Assigned Tasks: Provide strategic advice on project, review of environmental reports

Cornubia Retail Park - EIA, South Africa

Start Date: 2012

Client Name: Tongaat Hulett Developments (Pty) Ltd

Project Value: R 370,120

Undertaking the EIA, Public Participation Process (PPP), attending client progress meetings and providing environmental input into the planning of the proposed Phase 2 Retail Development.

Position: Strategic Environmental Advisor

Assigned Tasks: Environmental Scientist. Strategic project advice, quality review and approval of reports

Centurion Metropolitan Core Masterplan: Stormwater and Flooding, South Africa

Start Date: 2012

Client Name: City of Tshwane Metropolitan Municipality

Project Value: R 4,300,000

The City of Tshwane requires a multi-disciplinary project team to assist the Client with the Preparation of a Master Plan of the Centurion Metropolitan Core Study Area.

Position: Environmental Scientist

Assigned Tasks: Environmental Screening Investigation

Environmental Screening for the Commercial 125MW CSP, South Africa

Start Date: 2012

Client Name: Sasol Technology (Pty) Ltd

Project Value: R 185,000

Environmental Screening Investigation for the proposed 125MW commercial concentrated Solar Power Plant located in Upington.

Position: Project Principal

Assigned Tasks: Project Management, financial management, review of Environmental Screening Report

Route Determination and Environmental Screening Investigation of 14 K-routes, South Africa

Start Date: 2016-2019

Client Name: Gauteng Department of Roads and Transport

Project Value: R 5.6 Million

Route determination and ESI for routes K

Position: Environmental Scientist

Assigned Tasks: Environmental Screening Investigation and compilation of the ESI Report

City of Tshwane: Waste Transfer Facilities, South Africa

Start Date: 2014

Client Name: City of Tshwane Metropolitan Municipality

Project Value: R 150,000

Report on environmental and sustainability considerations in Waste to Energy (WtE) Plants when they are co-fired with Municipal Solid Waste. Concept designs and environmental screening of various waste transfer stations. Situational assessment of other closed landfill facilities.

Position: Environmental Scientist

Assigned Tasks: Advise the client on Environmental authorisation requirements

Basic Assessment for the Sasol C3 Expansion Project, Sasol Industrial Complex, South Africa

Start Date: 2013

Client Name: Sasol Polymers

Project Value: R 267,614

The C3 expansion project was initiated to address an estimated 105ktpa additional propylene that will be

available in 2014 as a result of various optimisation projects on the upstream Sasol Synfuels facilities. An opportunity was identified for the additional propylene to be utilised as feed for the polypropylene (PP) plants, namely PP1 and PP2. The C3 expansion project involves upgrading and implementing changes to the existing PP1 and PP2 process equipment to accommodate the increase in throughput.

Position: Project Principal

Assigned Tasks: Strategic project advice, quality review and approval of reports

BA for the Sasol Iso-Octanol Long Term Phase II Project, Sasol Industrial Complex, South Africa

Start Date: 2012

Client Name: Sasol Technology (Pty) Ltd

Project Value: R 261,184

The Iso-octanol long-term phase 2 project involves a process whereby aldehydes are converted in the existing Iso-alcohol stream (in Octene Train III) by hydrogenation to its corresponding alcohols to achieve the desired product specification for the Iso-octanol product. A new reactor and a new distillation column with its associated equipment will be installed for this purpose. The expected Iso-octanol production will range between 7 and 9kt/annum. In addition, a storage tank with a capacity of approximately 400m³ and a loading pump will be installed to enable storage and loading of the final Iso-octanol product.

Position: Project Principal

Assigned Tasks: Strategic project advice, quality review and approval of reports

Environmental Impact Assessment for the C3 Stabilisation Project situated on the Sasol Secunda Site, South Africa

Start Date: 2010

Client Name: Sasol Technology (Pty) Ltd

Project Value: R 447,172.00

Environmental Impact Assessment for the C3 Stabilisation Project situated on the Sasol Secunda Site

Position: Project Manager

Assigned Tasks: Project Management, review and compilation of EIA documentation, management of public process, liaise with client and authorities

Environmental Impact Assessment for the proposed Biogas to Power Plant Project at Sasol Synfuels, South Africa

Start Date: 2009

Client Name: Sasol Technology (Pty) Ltd

Project Value: R 167,865

Basic assessment study for the Biogas to power plant project.

Position: Project Manager

Assigned Tasks: Project management, compilation of environmental reports

Environmental Impact Assessment for the proposed Sasol Bioworks upgrade, South Africa

Start Date: 2008

Client Name: Sasol Technology (Pty) Ltd

Project Value: R306,101 Sasol One Bioworks Expansion

Position: Project Manager

Assigned Tasks: Overall Project Management and quality control

EIA or the Amendment of Mining Right for the UCG Pilot Plant, South Africa

Start Date: 2008

Client Name: Sasol Technology (Pty) Ltd

Project Value: R 404,000

Environmental Impact Assessment and Mining Authorisation for the Underground Coal Gasification Pilot Project located in Secunda Mpumalanga Province.

Position: Project Manager

Assigned Tasks: Overall Project Management and quality control

Department of Public Works: ECO Work in Pretoria, South Africa

Start Date: 2010 - 2017

Client Name: Department of Public Works

Project Value: R 2,100,000

Environmental Control Officer and Occupational Health and Safety for the demolition activities associated with the HG de Witt Building in Pretoria.

Position: Project Manager

AssignedTasks: Project Managementand Environmental Control Officer (ECO) work

AEL OEMPr Compilation

Start Date: 2019
Client Name: AEL Africa
Project Value: R 100,000
Position: Senior Environmental Scientist
Assigned Tasks: Compilation of OEMPr for the ISAP and Nitrate Plant

HaskoningDHV are the project managers in charge of the Design and Construction, as well as the designers for the Intelligent Transportation Systems and Urban Traffic Control.

Position: Environmental Scientist
Assigned Tasks: Environmental Screening Investigation and Ad Hoc environmental advice

Environmental Status Quo for the Scottsville Local Area Plan

Start Date: 2018
Client Name: Msunduzi Municipality
Project Value: R 2.5 million
Position: Environmental Scientist
Assigned Compilation of Environmental Status Quo chapter

Previous Experience

2010 - 2012

SSI Engineers and Environmental Consultants (Pty) Ltd Associate

2008 – 2010

SSI Engineers and Environmental Consultants (Pty) Ltd formerly known as Bohlweki Environmental (Pty) Ltd Senior Environmental Consultant

White Mfolozi Bridge & Link Road, South Africa

Start Date: 2016
Client Name: Kwa-Zulu Natal Department of Transport
Project Value: R 0.8 million
Position: EAP
Assigned Tasks: Compilation of the Basic Assessment Report and EMPr in support of the necessary Environmental Authorisations and permits

2006 – 2008

Bohlweki Environmental (Pty) Ltd Junior Environmental Consultant

2001 – 2006

Department of Agriculture Senior Plant and Quality Control Officer

Sundumbili Wastewater Treatment Works, South Africa

Start Date: 2015
Client Name: Ilembe Municipality
Project Value: R2 000 000
Position: EAP
Assigned Tasks: Environmental Screening and Environmental Impact Assessment

Rustenburg Integrated Rapid Public Transport Network (IRPTN), South Africa

Start Date: 2009
Client Name: Rustenburg Local Municipality
Project Value: R 3,000,000,000
Planning, design and implementation of the Rustenburg Rapid Transport project in Rustenburg.
The final system, which will consist of several phases, will comprise of approximately 900 busses, 600 kilometres (km), 50 bus routes, 35 km segregated bus lanes, 30 stations, 3 depots, 1 transport management centre, and zero compromise in public transport service quality. Royal

Curriculum Vitae

Seshni Govender

Roads and Rail

Environmental Consultant



E: seshni.govender@rhdhv.com

T: 087 352 1592

Seshni is an Environmental Consultant working on strategic environmental planning and water-related projects. Seshni has been involved in numerous Water Use Licence projects, including complex integrated licencing that requires understanding cumulative environmental impacts. She also has been involved in the development of the Environmental Authorisation Processes for the N11-13X Mokpane Ring Road and the development of Photovoltaic Plants in the Northern Cape Province and Gauteng Environment Outlook .

Seshni has drafted applications for complex integrated licences that include components of National Environmental Management Act and National Water Act on behalf of Eskom and private companies. This has exposed her to the intricate mechanisms of trying to integrate environmental impacts with mitigation measures that will be in line with the sustainable development principles.

As an Environmental Scientist Seshni contributes to projects through; report writing, data management and analysis, environmental impact analysis, policy review and public engagement/consultation.

Degree

BSc Environmental Science (Hons)

Nationality

South African

Years of experience

9

Years with Royal HaskoningDHV

9

Professional experience

Basic Assessment for the Proposed Developments of Ten (10) Photovoltaic (PV) plants at the Bokpoort farm near Groblershoop, Northern Cape

- > ACWA Power Energy Africa (Pty) Ltd
- > Northern Cape Province, 2019

ACWA Power Energy Africa (Pty) Ltd (hereafter referred to as ACWA Power) is proposing to construct a solar energy facility (Bokpoort II) consisting of ten (10) photovoltaic (PV) plants on the north-eastern portion of the Remaining Extent (RE) of the Farm Bokpoort 390, located 20 km north-west of the town of Groblershoop within the !Kheis Local Municipality in the ZF Mgcawu District Municipality, Northern Cape Province.

On 21 October 2016, a 900 ha, 150 MW Concentrating Solar Power (CSP) plant was authorised by the Department of Environmental Affairs (DEA). Due to the changes in the Integrated Resource Plan (IRP) published in October 2019, ACWA Power intend replacing the authorised CSP site with eight (8) new PV plants. The updated layout has been revised to incorporate the 8 new PV plants of 250 MW each, covering a total of 1200 ha (i.e. 150 ha for each plant).

Two 250 ha 75 MW PV plants including ancillary infrastructure, were also authorised by the DEA on 24 October 2016. As the PV 1 and PV 2 plants are also approved on the Farm Bokpoort 390 RE, the footprints of these approved PV plants will undergo an amendment to accommodate the 8 new PV plants and ancillary infrastructure.

Basic Assessment and Water Use Authorisation for the removal, re-instatement and repositioning of two high voltage powerlines routed through the Stellenbosch Landfill off Devon Valley Road, Stellenbosch, Western Cape

- > Eskom Holdings SOC Ltd and Stellenbosch Municipality
- > Western Cape Province, 2020

The Stellenbosch Municipality owns and operates the Stellenbosch Landfill situated off Devon Valley Road. The landfill comprises completed cells (cell 1 and 2) as well as an operating cell (cell 3). Cell 3 is separated from cells 1 and 2 by an area on the landfill property footprint that is used for access roads, entrance area and weighbridge, green waste chipping and rubble crushing and stockpiling activities. This area is also transversed by two high voltage Eskom powerlines. The presence of these powerlines

prevents the Municipality from engineering and operating the area between completed cells 1 and 2 and operating cell 3 as waste disposal cells.

Eskom Distribution (Western Cape Operating Unit) therefore proposes removing, re-instating and repositioning the two powerlines (132kV and 66kV) routed through the landfill. The 132kV powerline will be relocated to the northern and eastern boundary of the landfill, whilst the 66kV powerline will be relocated to the eastern and southern boundary. The proposed length of each of the deviated lines are approximately 1km. Two alternative pylon structures are currently being considered i.e. monopoles and lattice towers.

Basic Assessment and Environmental Management Programme for the Borrow Pit 5.5L associated with the N11 Section 13X (N11-13X), Mokopane Ring Road, Mogalakwena Local Municipality, Limpopo province

- > South African National Roads Agency Ltd
- > Limpopo Province, 2019

The South African National Roads Agency Ltd (SANRAL) has commissioned the Detail Design and the Construction Monitoring of the N11-13X Mokopane Ring Road to divert the heavy vehicle traffic that travels to and from the mines on the western side of Mokopane and to Botswana, from the already congested existing N11 section which passes through the existing villages and the Mahwelereng Township.

The N11-13X Mokopane Ring Road is a “greenfields” project where a new road will be constructed. The class of the new road will be Class 1. The new road to be constructed will typically have an overall width of 13.4 m where the initial carriageway will comprise a minimum 2.5 m outer shoulder, 2 x 3.7 m lanes, and 2.5 m inner shoulder. In general, the road reserve varies between 71 – 75 m but there are wider sections where there is a deep cutting or because of allowance for future interchanges.

A limited amount of gravel (G5 – G7 quality) will be available from cut widenings within the road reserve. The remainder of the gravel required for the proposed road construction (gravel layer works) will need to be sourced from borrow pits.

Application for Postponement of Compliance Timeframes to achieve New Plant Standards at ArcelorMittal South Africa, Vanderbijlpark Works, Emfuleni Local Municipality

- > ArcelorMittal South Africa
- > Gauteng Province, 2019

In response to Section 21 of the National Environmental Management: Air Quality Act, 2004 (Act No.39 of 2004) (as amended in 2018), ArcelorMittal applied for a postponement of the compliance timeframes to achieve the new plant minimum emission standards, as well as alternative emission standards for certain plants at the Vanderbijlpark Works (AMSAVW), Emfuleni Local Municipality, Gauteng.

Application for an Alternative Plant Standard and Suspension Application for activities associated with the ArcelorMittal Pretoria Works, City of Tshwane, Gauteng.

- > ArcelorMittal South Africa
- > Gauteng Province, 2019

In response to Section 21 of the National Environmental Management: Air Quality Act, 2004 (Act No. 39 of 2004) (as amended in 2018), ArcelorMittal intends to apply for an alternative plant standard and submit a suspension application of the compliance timeframes to achieve the new plant minimum emission standards for the Pretoria Works, City of Tshwane, Gauteng.

Water Use Licence application for the Urania-Bronville Powerline Upgrade Project, Matjhabeng Local Municipality, Free State Province

- > Matjhabeng Local Municipality
- > Free State Province, 2019

The construction of new overhead powerlines to replace the existing underground powerlines that are no longer operational. The works will comprise the supply, delivery, off-loading, installation, erection, commissioning and handing-over (in a proper working condition) of the following infrastructure.

The construction of a new approximately 3.3 km, 132 kV overhead line between the Welkom Main Intake Substation and Urania Substation.

The construction of a new approximately 5.5 km, 11 kV overhead line between the Industries Substation and Bronville Substation.

Water Use Licence for the Proposed Deviation of the 88kV Firham-Platrand Powerline near Standerton, Mpumalanga Province

- > Eskom Holdings SOC Limited
- > Mpumalanga Province, 2018

Eskom Holdings Limited, a State-Owned Company (SoC) proposed a deviation of a portion of the existing 88kV Firham-Platrand Powerline from pole 157 to pole 180 within a servitude of 31m and a length of approximately 2km. The purpose of the deviation is to avoid a wetland in which these poles are currently located which poses a network stability risk as it is located within a wetland area.

Firham Platrand is an interconnector between Standerton and Volksrust for network stability, the line supplies Transnet Traction Stations, should the line fail, the trains in the nearby tractions will not be able to move.

Water Use Licence Application for the Proposed Site Clearance for Planning and Design of a Border Barrier, Patrol Roads and Fencing between the Republic of South Africa (RSA), Swaziland and Mozambique, Phase 1 (KM 0.0 0 KM 54.0)

- > The National Department of Public Works (DPW) and KwaZulu-Natal Department of Transport (KZN DoT)
- > KwaZulu-Natal Province, 2018

Proposed the upgrade of existing border control infrastructure, and development of new border control infrastructure along a portion of the South Africa (KwaZulu-Natal) - Mozambique Border in the north-eastern part of the KwaZulu-Natal (KZN) Province. This application is termed the 'Phase 1' application and forms a component of a wider project being undertaken by the DPW for the upgrading of border control infrastructure along the South Africa - Swaziland border and the southern part of the South Africa - Mozambique border (the Phase 2 Project). The Phase 1 alignment is comprised of the section of the international border with Mozambique from the high-water mark of the Indian Ocean (KM0.0) to the eastern boundary of the Ndumo Game Reserve (KM54.0).

Environmental Screening Investigation: Route Determination for the K178 between the Gauteng Provincial Border and PWV1, Gauteng Province

- > Gauteng Department of Roads and Transport (GDRT)
- > Gauteng, 2018

The purpose of the Gauteng Strategic Road Network (GSRN) conceived by the Gauteng Department of Roads and Transport (GDRT) some 40 years ago was to plan a robust road system, with the objective of preserving transportation corridors and serving as a guideline for the rapid development and urbanisation of Gauteng.

The route for the K178 is the section between the Gauteng Provincial Border (in the east) and the future PWV1 (in the west) with an approximate length of 18.8km. The alignment generally follows the previous planned GDRT route along the alignment of the existing R54.

In the context of integrated environmental management, screening determines whether a development proposal requires environmental assessment, and if so, what level of assessment is appropriate. Screening is thus a decision-making process that is initiated during the early stages of the development of a project.

The main purpose of the ESI was to determine at this stage of the road design whether there are aspects of the development proposal that have the potential to give rise to significant or unacceptable environmental consequences i.e. fatal flaws.

Water Use Licence Application for the Proposed Site Clearance for Planning and Design of a Border Barrier, Patrol Roads and Fencing between the Republic of South Africa (RSA), Swaziland and Mozambique, Phase 2 (KM 54.0 0 KM 524.0)

- > The National Department of Public Works (DPW)
- > KwaZulu-Natal and Mpumalanga Provinces, 2018

The National Department of Public Works (DPW) as the applicant, (in conjunction with the KwaZulu-Natal Department of Transport (KZN DoT) as an implementing agent) is proposing the upgrade of existing border control infrastructure, and development of new border control infrastructure along a portion of the South Africa–Mozambique–Swaziland Border in KwaZulu-Natal and Mpumalanga. This application was termed the 'Phase 2' application and forms a component of a wider project being undertaken by the DPW for the upgrading of border control infrastructure along the South Africa - Swaziland border

and the southern part of the South Africa - Mozambique border. The Phase 1 alignment is comprised of the section of the international border with Mozambique from the high-water mark of the Indian Ocean (KM0.0) to the eastern boundary of the Ndumo Game Reserve (KM54.0), whilst this Application (Phase 2) is from KM54.0 to KM524.0.

The project is being undertaken by the DPW in conjunction with the Department of Agriculture Forestry and Fisheries (DAFF) and the South African National Defence Force (SANDF), and Ezemvelo KZN Wildlife (EKZNW) and the iSimangaliso Wetland Park Authority (IWPA) as partner organs of state. The KZN DoT is an implementing agent for one of the infrastructure components (the border barrier structure).

The aim of the project is to stop the illegal trafficking of stolen vehicles and contraband across this section of the international border, as well as to prevent the illegal movement of people as well as livestock that could transmit disease. South Africa has approximately 4 800 km of land border and 2 800 km of coastline border which is required to be secured. South Africa is greatly affected and financial impacted by illegal imports, smuggling and other similar illegal activities which transpire over borders. In order to effectively respond to the range of security and control challenges that are being experienced by responsible organs of the State, it is important to assess the situation and to be able to incorporate a viable solution.

Basic Assessment for the Proposed Construction of a Bridge over the Rooisloot River, Various Culverts and Borrow Pits Associated With the National Route N11 Section 13x (N11-13x) (Mokopane Ring Road) in the Mokopane Area

- > South African National Roads Agency Ltd
- > Limpopo Province, 2018

The South African National Roads Agency Ltd (SANRAL) has commissioned the Detail Design and the Construction Monitoring of the N11-13X Mokopane Ring Road. An Environmental Impact Assessment (EIA) study was previously conducted for the proposed re-routing of the N11-13X road. The Environmental Authorisation and subsequent approval of the Environmental Management Plan (EMP) was obtained in 2009. The subject of this Basic Assessment Process was therefore to address the infilling activities within the watercourses which pertain to the Rooisloot Bridge and the associated culverts. There were 5 Borrow Pits associated with this project that were also subject to Basic Assessment Processes.

NW Environment Outlook, South Africa

- > North West Department of Rural, Environment and Agricultural Development
 - > Mahikeng, 2018
- Compilation of the water chapter as part of the publication of the North West Environment Outlook

Integrated Water Use Licence Application for the Rehabilitation of the Existing P236 and Culvert from km 6.235 to km 14.0

- > KwaZulu-Natal Department of Transport
- > Ubombo, KwaZulu-Natal, 2017

The P236 is located north of Mkhuze and starts at km 0.0 at the intersection with P2-9 and ends at km 32.0, intersecting P449. The application, however, was only for the rehabilitation of km 6.235 to km 14.0 of the P236 as well as the replacement of a culvert at Km 6.240.

Integrated Open Space for the Greater Khayalami and Ruimsig/Honeydew Sub Regions

- > City of Joburg, 2017

Development of two integrated open space plans for the Greater Khayalami and Ruimsig-Honeydew Sub-regions which aim to ensure that ecological goods and services are maintained and enhanced so as to contribute to spatial planning in the City of Johannesburg, and both economic and social development.

Water Use Licence Application for the Proposed Upgrade of Dango Bridge (B1372) and Bedlane Bridge (B1336) situated along P393 (R34) Road Between Nkwalini Pass (Km0,0) and Empangeni (Km24,0)

- > KwaZulu-Natal Department of Transport
- > Empangeni, KwaZulu-Natal, 2017

The KwaZulu-Natal Department of Transport (DoT) proposed to improve the Provincial road P393 (R34) from P47-4 at Nkwalini Pass (km 0.0) to P230 at Empangeni (km 24.0) within the King Cetshwayo District Municipality in KwaZulu-Natal Province. The project starts at the intersection of P47-4 (R66) with P393 (R34) at Nkwalini Pass (km 0.0) and ends at P230 (km 24.0) towards Empangeni. The Bedlane river bridge (B1334) is situated at km 2.6 from Nkwalini Pass and the Dango river bridge (B1372) is situated at km 3.9 from Nkwalini Pass. The existing P393 road is 8.8m wide and the proposed road geometry for the rehabilitation is 10.0m wide including shoulders.

Water Use Licence Application for the Proposed Culvert Rehabilitation along Provincial Road P230 from Km37.0 to Km47.0

- > KwaZulu-Natal Department of Transport
- > Umhlathuze Local Municipality, KwaZulu-Natal, 2017

This project formed part of the Empangeni Road Rehabilitation Programme and covers the rehabilitation of the provincial road P230 between km 37,0 and km 47,0 within the uMhlathuze Local Municipality which forms part of the King Cetshwayo District Municipality (DC28), KwaZulu-Natal. Provincial Road P230 from the intersection with P393 at km 37,0 to km 47,0 near Empangeni is defined as an undivided two lane road, and has been classified as a Class R1 Rural Arterial Road (in terms of the TRH26). The P230 forms part of the R34 long distance heavy haul freight route, which connects the harbour of Richards Bay and the surrounding industrial and commercial areas, with inland provinces.

Integrated Water Use Licence Application for the Canelands Extension Development, KwaZulu-Natal

- > Tongaat Hulett Developments
- > Kwadukuza Municipality, KwaZulu-Natal, 2017

Tongaat Hulett Development wishes to develop the site for industrial purposes. The site lies adjacent to the existing Canelands Industrial estate. Potential land uses may include general / industrial, logistics, warehousing and distribution. These land uses will complement those of the existing Canelands Industrial Estate and will ensure that this land parcel reads as an extension to the existing development. It is proposed, due to the proximity of the floodplain and numerous other constraints located on-site, that a single platform covering an area of approximately 1.67 hectares (1.67 ha) is created. Both a servicing and traffic report has been completed, which details how this development will be accommodated by the existing bulk infrastructure within the region.

Gauteng Province Environment Outlook Report

- > Gauteng Department of Agriculture and Rural Development
- > Gauteng, 2017

State of the Environment Report (SoER) is a report card on the condition or quality of the environment. It provides information on how we affect the environment, how the environment affects us, and how this condition has changed over time. Environmental conditions are analysed through the use of environmental indicators which are proxies of environmental status, and which can be monitored over time and space. Reporting on the State of Environment (SoE) is therefore an important tool in identifying, assessing and setting priorities for environmental issues, as well as in determining whether environmental policies and actions are effective. Furthermore, the 'environment outlook' component attempts to describe or predict how environmental challenges will evolve in the near future, and what needs to be done to achieve a more sustainable state of living for all people in the province. The ultimate value of environmental outlook reporting lies in the degree to which that assessment can be used for adaptive environmental management to address anticipated future environmental conditions and pressures.

North West Environmental Outlook/State of the Environment Trend Analysis

- > North West Department of Rural, Environment and Agricultural Development
- > Mahikeng, 2017

The *Environmental Trend Analysis Report* focused on the publications of the North West Province State of Environment and Environment Outlook Reports dated 1995, 2002, 2008 and 2013, in an effort to expand this trend reporting to fully cover the period 1995 to 2013. This exercise followed on from the 2013 Environment Outlook Report which reported on environmental trends and made related recommendations to guide the province towards a more sustainable future. As such, the following objectives were achieved:

- > The indicators for each chapter were tracked through the reporting period
- > Data Gaps Identified
- > the value of the indicator set determined

Environmental Impact Assessment and Integrated Water Use Licence Application for the Tinley Manor Southbanks Coastal Development, KwaZulu-Natal

- > Tongaat Hulett Developments
- > Kwadukuza Municipality, KwaZulu-Natal, 2017

Tongaat Hulett Developments proposes to develop the Tinley Manor Southbanks Coastal Development into a mixed-use coastal development including a large residential component. Tinley Manor Southbanks Coastal Development is an approximately 485 ha site, located between the coastal towns of Tinley Manor and Sheffield Beach within the KwaDukuza Municipality, KwaZulu-Natal.

The proposed Tinley Manor Southbanks Coastal Development is set to be the first phase of the development of Tongaat Hulett Developments' land holdings in Tinley Manor, which is situated to the south and north of the Umhlali River.

Integrated Open Space Plan – Greater Khayalami and Ruimsig-Honeydew Sub-Regions, Johannesburg, South Africa

- > Client: City of Johannesburg, 2016

Development of two integrated open space plans for the Greater Khayalami and Ruimsig-Honeydew Sub-regions which aim to ensure that ecological goods and services are maintained and enhanced so as to contribute to spatial planning in the City of Johannesburg, and both economic and social development.

Update of the Dube Tradeport State of the Environment Report

- > Dube Tradeport Corporation
- > KwaZulu-Natal, 2016

Compilation of the Dube Tradeport State of the Environment Report 2016/2017

Integrated Open Space Plan - Linbro Park & Greater Bassonia, Johannesburg, South Africa

- > City of Johannesburg, 2016

Development of two integrated open space plans for the Linbro Park and Greater Bassonia which aim to ensure that ecological goods and services are maintained and enhanced so as to contribute to spatial planning in the City of Johannesburg, and both economic and social development.

Final Consultation Basic Assessment Report for the Dismantling of a portion of the existing double-circuit power line and the construction of two (2) 7 km long 88 kV power lines within a 2 km corridor between the Grootpan and Brakfontein Substations

- > Eskom Holdings SOC Ltd
- > Ogies, Mpumalanga, 2015

Eskom Holdings (SoC) Pty Ltd (Eskom Distribution – Mpumalanga Operating Unit) proposes to construct two (2) 7 km 88 kV overhead power lines within a 2 km corridor between Grootpan and Brakfontein Substations near Ogies. The existing power lines are located on GlencoreXstrata mining property. The mine has requested that Eskom relocate the lines as they are within the operational footprint of the mine. The project also involves the dismantling of a portion of the existing 88 kV double-circuit mink power line approximately 5.2 km in length. The new power lines will ensure continuity of supply and access to electricity for the surrounding communities.

Conduct Pre-Feasibility (FEL-2) Waterberg Heavy Haul Line, South Africa

- > Transnet SOC Ltd
- > Waterberg, 2015

High-level environmental screening investigation for the proposed +/- 600km rail corridor running from Lephalale to Ermelo as part of the national Strategic Infrastructure Project (SIP) suite.

Tembisa Hub Plan, South Africa

- > Intersite Property Management Services
- > Ekurhuleni Metropolitan Municipality, 2015

Preparation of a Precinct plan for the Tembisa Urban Hub in Ekurhuleni.

Review and Update of the City of Windhoek's Environmental Policy

- > Consulting Services Africa (CSA)
- > Windhoek, Namibia, 2014

Review the existing City of Windhoek Environmental Management Policy, 2004 and revise and improve the existing policy so that it may be approved, launched, and implemented by the Windhoek City Council.

Green existing by-laws and develop a set of new environmental by-laws or amend the existing by-laws,

- > Ekurhuleni Metropolitan Municipality
- > Ekurhuleni, 2014

Review the existing Ekurhuleni by-laws by introducing environmental considerations and develop a set of new environmental by-laws if required.

Route Determination and EIA for K86, K118, K181 K208, K217 and K219,

- > Gauteng Department of Roads and Transport
- > Gauteng Province, 2014

Route Determination and Environmental Scan of K-routes in the Gauteng Province.

Dube Tradeport State of the Environment Report

- > Dube Tradeport Corporation
- > KwaZulu-Natal, 2014

Compilation of the Dube Tradeport State of the Environment Report 2013/2014

State of Environment Report (SOER) for City of Johannesburg, South Africa

- > South African Cities Network
- > City of Joburg, 2014

Compilation of the State of the Environment Report for the City of Johannesburg 2014

Cornubia Human Settlement - Integrated Water Use Licence Application, South Africa

- > Tongaat Hulett Developments (Pty) Ltd
- > Cornubia, KwaZulu-Natal, 2013

Water Use Licence Application for the Cornubia Industrial and Business Estate, Phase 1-Retail Park, Cornubia Phase and Cornubia Bridge

NW Environment Outlook, South Africa

> North West Department of Economic Development,
Environment, Conservation and Tourism

> Mahikeng, 2013

Compilation and Publication of the North West Provincial

Qualifications

2010 BSc (Hons) Environmental Science, University of
KwaZulu Natal, South Africa

2009 BSc Environmental Science, University of KwaZulu
Natal, South Africa

Appendix E: Public Participation Report

REPORT

Environmental Scoping Report for the Development of a 60MWp Photovoltaic Plant associated with the Tubatse Ferrochrome (TFC) Smelter, Steelpoort, Tetakgomo Tubatse Local Municipality

Public Participation Summary Report

Client: Samancor Chrome Pty Ltd

Reference: MD5426-RHD-ZZ-XX-RP-YE-0001

Status: S0/P01.01

Date: 05 June 2021

ROYAL HASKONINGDHV (PTY) LTD

21 Woodlands Drive
Building 5
Country Club Estate
Woodmead
Johannesburg
2191
Southern Africa
Reg No. 1966/001916/07

+27 87 352 1500 **T**
+27 11 798 6005 **F**
email **E**
royalhaskoningdhv.com **W**

Document title: Environmental Scoping Report for the Development of a 60MWp Photovoltaic Plant associated with the Tubatse Ferrochrome (TFC) Smelter, Steelpoort, Tetakgomo Tubatse Local Municipality

Document short title:

Reference: MD5426-RHD-ZZ-XX-RP-YE-0001

Status: P01.01/S0

Date: 05 June 2021

Project name: The Development of a 60MWp Photovoltaic Plant associated with the Tubatse Ferrochrome (TFC) Smelter

Project number: MD5426

Author(s): Seshni Govender

Drafted by: Seshni Govender

Checked by: Prashika Reddy

Date: 14.06.2021

Approved by: Prashika Reddy

Date: 14.06.2021

Classification

Project related

Unless otherwise agreed with the Client, no part of this document may be reproduced or made public or used for any purpose other than that for which the document was produced. Royal HaskoningDHV (Pty) Ltd accepts no responsibility or liability whatsoever for this document other than towards the Client.

Please note: this document contains personal data of employees of Royal HaskoningDHV (Pty) Ltd. Before publication or any other way of disclosing, this report needs to be anonymized.

Table of Contents

1	Introduction	1
1.1	Background	1
1.2	Public Participation Process	1
1.3	Purpose of the Report	2
1.4	Terms of Reference for Public Participation	2
1.5	Public Participation Summary	2
2	Identification of I&APs	2
3	Site Notices	3
3.1	Proof of Placement of Site Notices	3
4	Background Notification Document	10
5	Advertisement	10
6	Public Review of the Draft Consultation BAR	11
7	Comments and Responses Report (CRR)	11
8	Environmental Authorisation	11

Table of Tables

No table of figures entries found.

Table of Figures

Figure 1-1: Steps in the public participation process	1
Figure 3-1: Tubatse Chrome Golf Club	4
Figure 3-2: Steelpoort Laerskool	6
Figure 3-3: Steelpoort Post Office	8
Figure 3-4: Boundary of Proposed Site 3	10

Appendices

Appendix A: PP Plan & Approval

Appendix B: I&AP Database

Appendix C: Proof of Notification



Appendix D: Notification Documents

Appendix E: Proof of Advert

1 Introduction

1.1 Background

Samancor Chrome Ltd's core business is the mining and smelting of chrome ore. With an annual production capacity of 2.4 million tons of ferrochrome, Samancor Chrome is one of the largest integrated ferrochrome producers in the world. The ferrochrome produced is used in areas of the stainless-steel smelting process. Samancor Chrome has been, and continues to be, a major player in ferrochromium production. The company's total chromite resources exceed 900 million tons and are expected to support current mining activity for well over 100 years at the current rate of extraction. Some ores and concentrates are exported, but main allotments are destined for conversion into ferrochrome at the alloy plants.

The Tubatse Ferrochrome (TFC) Smelter was initially built as a three-furnace operation in 1975 as a joint venture between Gencor Ltd and Union Carbide Inc. (USA). In the same year, the Union Carbide Inc. shareholding was taken over by Samancor Chrome, and in 1989, Samancor Chrome acquired the Gencor Ltd shareholding. During the years 1989 – 1990, the plant was expanded to five furnaces with the sixth furnace being built in 1996. The plant is situated in Steelpoort, Limpopo Province and is in close proximity to the Eastern Chrome Mines. The core business of the operation is the production of charge chrome using six Submerged-Arc Furnaces, one metal recovery plant, and a Pellet and Sintering Plant.

1.2 Public Participation Process

Public Participation (PP) is a process that is designed to enable all interested and affected parties (I&APs) to voice their opinion and/or concerns which enables the practitioner to evaluate all aspects of the proposed development, with the objective of improving the project by maximising its benefits while minimising its adverse effects.

The PP Process must adhere to the requirements of Regulations 41 and 42 (GNR 982) as amended in 2017. Further, a PP guideline in terms of NEMA was issued by the Department of Forestry, Fisheries and the Environment in 2017, of which provisions will also be implemented. A PP Plan was submitted and subsequently accepted by the Department on 18 June 2021 (**Appendix A**)

The PP Process for proposed project will be undertaken according to the stages outlined below as well as the requirements for the stakeholders.

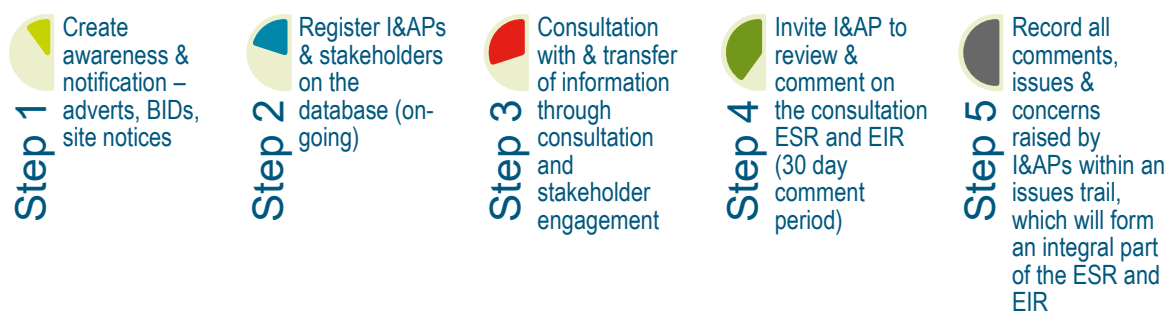


Figure 1-1: Steps in the public participation process

1.3 Purpose of the Report

The key purpose of this PP Summary Report is to:

- Summarise the PP Process undertaken for the Environmental Scoping Study;
- Highlight what has been done to date;
- Synthesise the issues and concerns identified by I&APs and various stakeholders during the PP Process; and
- Synthesise comments on the proposed development.

1.4 Terms of Reference for Public Participation

The terms of reference for the implementation of a successful and robust PP Process, are as follows:

- Identification of I&APs in the vicinity of the study area;
- Provision to all I&APs of an opportunity to comment or raise concerns regarding the project;
- Maintenance of procedures for communication with I&APs and receiving, documenting and responding to relevant communication from I&APs;
- Identification and elimination of any sources of misunderstandings between the Applicant, EAP and the I&APs;
- Always aim to improve the communication between the Applicant, EAP and I&APs;
- Present the project in an objective way by supplying all appropriate, relevant and accurate information and facts in an unbiased manner to ensure a better understanding of the proposed project; and
- Ensure that the PP Process is an independent and transparent process.

1.5 Public Participation Summary

The PP Process commenced in May 2021 where site notices were erected at strategic locations around the study area, on 05 May 2021. A Background Information Document (BID) was distributed to the I&APs as well as commenting authorities. I&APs were introduced to the project and encouraged to register on the database.

An advertisement will be placed in the Steelburger Newspaper on 25 June 2021 followed by a commenting period which will provide an opportunity for the I&APs to raise their issues and concerns regarding the proposed project.

The draft Consultation Environmental Scoping Report (ESR) will be made available for authority and public review for a 30-day period from 25 June – 26 July 2021.

2 Identification of I&APs

The first step in the PP Process entailed the identification of key I&APs and Stakeholders, including:

- Local and provincial government;
- Affected and neighbouring landowners; and
- General I&APs.

An I&AP database (**Appendix B**) and Proof of notification (**Appendix C**) has been compiled which will be maintained and updated throughout the duration of the Scoping and EIA study.

3 Site Notices

The NEMA EIA Regulations (2014 as amended in 2017) require that a site notice be fixed at a place conspicuous to the public at the boundary or on the fence of the site where the activity to which the application relates is to be undertaken and on any alternative sites. The purpose of this is to notify the public of the project and to invite the public to register as stakeholders and inform them of the PP Process. Royal HaskoningDHV erected site notices at various noticeable locations around the perimeter of the site and at strategic locations on or near the site (The Tubatse Chrome Golf Club, Steelpoort Primary School, Post Office; and proposed Site 3).

3.1 Proof of Placement of Site Notices

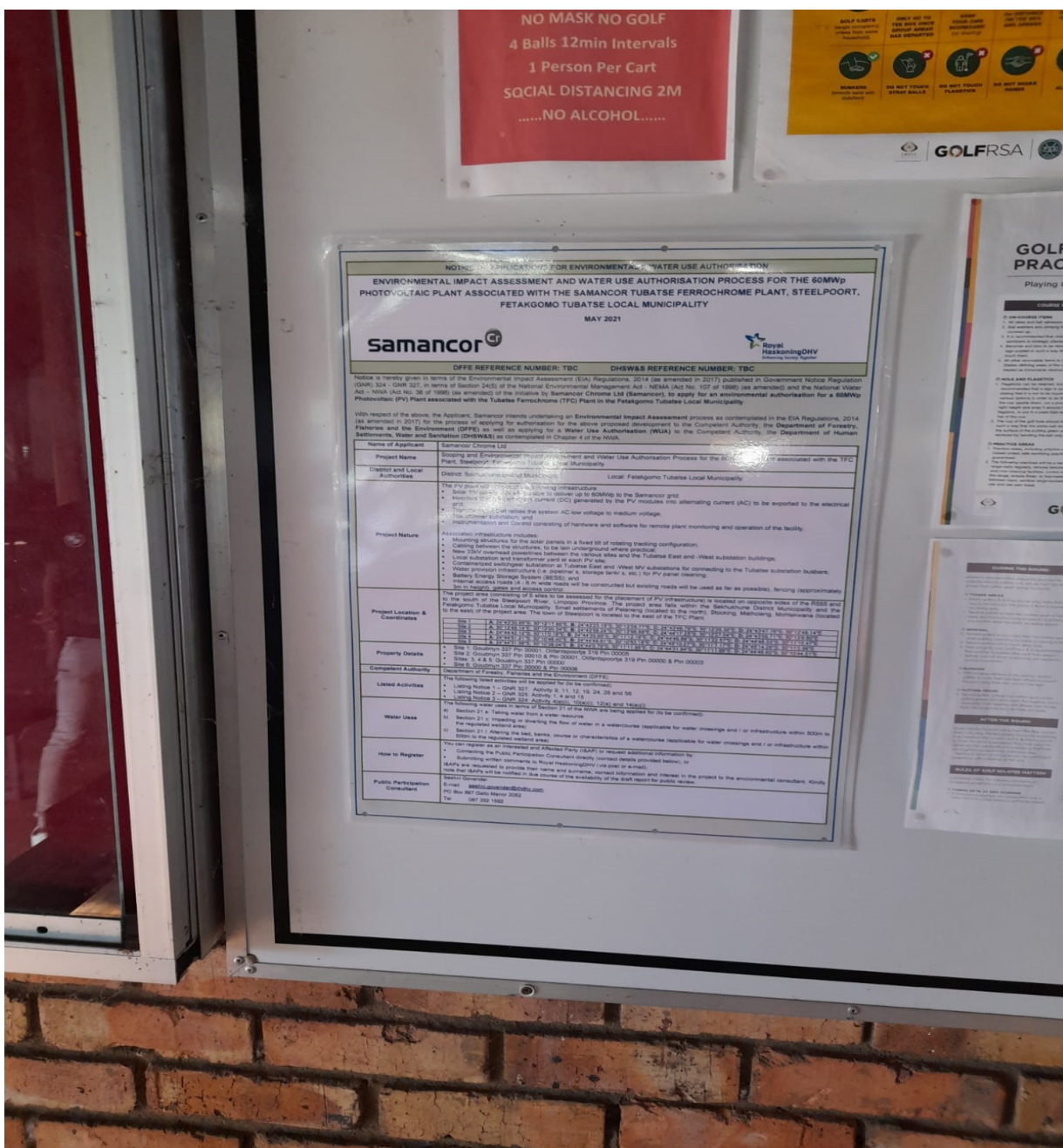




Figure 3-1: Tubatse Chrome Golf Club





Figure 3-2: Steelpoort Laerskool





Figure 3-3: Steelpoort Post Office





Figure 3-4: Boundary of Proposed Site 3

4 Background Notification Document

A BID that contained the project brief (**Appendix D**) for the project was compiled in English. The aim of this document was to provide a brief outline of the application and the nature of the development. It is also aimed at providing preliminary details regarding the Scoping and EIA study and explains how I&APs could become involved in the project. The document was distributed to all identified I&APs and stakeholders, together with details of the Public Participation Consultant.

5 Advertisement

In compliance with the EIA Regulations (2014 as amended in 2017), notification of the commencement of the Environmental Scoping Study for the project will be advertised in one local newspaper, the Steelburger Newspaper on 25 June 2021 in English (**Appendix E**).

I&APs are requested to register their interest in the project and become involved in the study. The primary aim of this advertisement is to ensure that the widest group of I&APs possible are informed and invited to provide input and questions and comments on the project. I&APs will also be notified of the availability of the draft consultation ESR for review and comment.

6 Public Review of the Draft Consultation BAR

The draft consultation ESR is available for authority and public review for a total of 30-days from 25 June – 26 July 2021.

The report will be made available at the following public locations within the study area, which are all readily accessible to I&APs:

- Burgersfort Public Library
- Fetakgomo Tubatse Municipal Office
- Tubatse Ferrochrome Smelter offices; and
- Electronically on the Royal HaskoningDHV Website: <https://www.royalhaskoningdhv.com/en/south-africa/projects/environmental-reports>

7 Comments and Responses Report (CRR)

Issues and concerns raised will be compiled into an CRR and will form part of the final ESR.

8 Environmental Authorisation

On receipt of environmental authorisation (positive or negative) for the project, I&APs registered on the project database will be informed of this authorisation and its associated terms and conditions by correspondence and advertisement.

Appendix A: PP Plan & Approval

From: Samkelisiwe Dlamini <[REDACTED]>
Sent: Friday, June 18, 2021 10:25 AM
To: Malcolm Roods <[REDACTED]>
Cc: Masina Litsoane <[REDACTED]>
Subject: PP Plan for the PV

Dear Malcolm

THE public participation plan for the 60MWp Photovoltaic Plant associated with the Tubatse Ferrochrome Smelter, Steelpoort, Fetakgomo Tubatse Local Municipality and received on the 11 June 2021 refers.

The Department has evaluated the Public Participation Plan which is submitted as per Minister Directive dated 05 June 2020 in response to Covid-19 pandemic and hereby approves the plan for the abovementioned project.

Please ensure that all correspondence to be sent to I&APs must clearly specify the dates when comments on the report should be submitted. Further, should there be a need to for a meetings from I&APs, the meeting can take place via virtual platforms such as Microsoft Teams.

You may proceed with the public participation process in accordance with the tasks contemplated in the PPP plan. Should you wish to deviate from the submitted PPP Plan, the amended PPP Plan must be submitted to the Department for approval prior commencement.

You are hereby reminded of Section 24F of the National Environmental Management Act 1998 (Act No. 107 of 1998), as amended, that no activity may commence prior to an Environmental Authorization being granted by the Department.

Please note that the minutes of the meeting reflect what was discussed on the meeting. Further, the approach in terms of Listing Notice 3 (LN3) activities is accepted as D: Biodiversity & Conservation stated "That approach is supported because of the latest status of the information then we get accurate information compared using old CBA and ESA data".

Do not hesitate to contact me if you need further clarity

Regards

Samke

Ms Samkelisiwe Dlamini
National Infrastructure Projects
Department of Forestry, Fisheries and the Environment
473 Steve Biko Road
Arcadia

[REDACTED]

[REDACTED]

Disclaimer

This message and any attachments transmitted with it are intended solely for the addressee(s) and may be legally privileged and/or confidential. If you have received this message in error please destroy it and notify the sender. Any unauthorized usage, disclosure, alteration or dissemination is prohibited. The Department of Environmental Affairs accepts no responsibility for any loss whether it be direct, indirect or consequential, arising from information made available and actions resulting there from. The views and opinions expressed in this e-mail message may not necessarily be those of Management..

Department of Forestry, Fisheries and the Environment
(DFFE)
Integrated Environmental Authorisations
Attn: To be confirmed

ROYAL HASKONINGDHV (PTY) LTD

21 Woodlands Drive
Building 5
Country Club Estate
Woodmead
Johannesburg
2191

+27 87 352 1500 **T**
+27 11 798 6005 **F**
Johannesburg@rhdhv.com **E**
royalhaskoningdhv.com **W**

Date:	20 May 2021	Contact name:	Malcolm Roods
Your reference:		Telephone:	[REDACTED]
Our reference:	MD5462-RHD-ZZ-XX-CO-YE- 0001	Email:	[REDACTED]
Classification:	Project related		

Public Participation Plan: Environmental Authorisation for the 60MWp Photovoltaic Plant associated with the Tubatse Ferrochrome Smelter, Steelpoort, Fetakgomo Tubatse Local Municipality

Dear Sirs/Mams

The rising electricity tariffs in South Africa, combined with the load shedding patterns experienced across the country, has a negative impact on the production and revenue of the Samancor business. This has motivated Samancor to consider renewable energy generation at their smelter plants. Implementing solar PV generation will result in improved availability of supply and reduced utility bills, especially since a major portion of the Samancor product is being exported. A PV plant converts the solar radiation into electric energy by using photovoltaic solar arrays. The name plate rating of the plant will be a minimum of 60 MWp, which will be spread over several sites surrounding the Tubatse Ferrochrome mining operations.

Each of the PV plants will consist of the following infrastructure:

- Solar PV panels that will be able to deliver up to 60MWp to the Samancor grid;
- Inverters that convert direct current (DC) generated by the PV modules into alternating current (AC) to be exported to the electrical grid;
- Transformer /s that raises the system AC low voltage to medium voltage. The transformer converts the voltage of the electricity generated by the PV panels to the correct voltage for delivery to Eskom;
- Transformer substation; and
- Instrumentation and Control consisting of hardware and software for remote plant monitoring and operation of the facility.

Associated infrastructure includes:

- Mounting structures for the solar panels in a fixed tilt of rotating tracking configuration;
- Cabling between the structures, to be lain underground where practical;

- New 33kV overhead powerlines between the various sites and the Tubatse East and -West substation buildings;
- Local substation and transformer yard at each PV site;
- Containerized switchgear substation at Tubatse East and -West MV substations for connecting to the Tubatse substation busbars;
- Water provision infrastructure (i.e. pipeline/ s, storage tank/ s, etc.) for PV panel cleaning;
- Battery Energy Storage System (BESS); and
- Internal access roads (4 - 6m wide roads will be constructed, but existing roads will be used as far as possible), fencing (approximately 3m in height), gates and access control.

As per Government Gazette 43412 GN R. 650 Disaster Management Act (57/2002): Directions Regarding Measures to Address, Prevent and Combat the Spread of COVID-19 Relating to National Environmental Management Permits and Licences: Annexure 2 and 3 published on 5 June 2020, the DFFE requires a Public Participation (PP) Plan to be approved for an application for Environmental Authorisation that requires public participation.

PP is a process that is designed to enable all Interested and Affected parties (I&APs) to voice their opinion and/or concerns which enables the practitioner to evaluate all aspects of the proposed development, with the objective of improving the project by maximising its benefits while minimising its adverse effects.

I&APs include all interested stakeholders, technical specialists, and the various relevant organs of state who work together to produce better decisions.

The primary aims of the PP process are:

- to inform I&APs and key stakeholders of the proposed application and environmental studies;
- to initiate meaningful and timeous participation of I&APs;
- to identify issues and concerns of key stakeholders and I&APs with regards to the development;
- to promote transparency and an understanding of the project and its potential environmental (social and biophysical) impacts (both positive and negative);
- to provide information used for decision-making;
- to provide a structure for liaison and communication with I&APs and key stakeholders;
- to ensure inclusivity (the needs, interests and values of I&APs must be considered in the decision-making process);
- to focus on issues relevant to the project, and issues considered important by I&APs and key stakeholders; and
- to provide responses to I&AP queries.

The public participation process must adhere to the requirements of Regulations 41 and 42 (GN R.326). Further, a Public Participation guideline in terms of NEMA was issued by the DFFE in 2017, of which provisions will also be implemented.

PUBLIC PARTICIPATION PLAN

1. Identification of I&APs

An I&AP database is already available due to previous projects undertaken. The I&AP database will be updated with new I&APs requesting to be registered and will be maintained throughout the duration of the project. All registered I&APs on the database will be informed of the project, review period as well as outcome of the decision issued by DFFE.

2. Advertisement

In compliance with the EIA Regulations 2014 (as amended in 2017), notification of the draft Consultation Environmental Scoping Report (ESR) and draft Environmental Impact Report (EIR) will be advertised in the local newspaper in the Steelpoort area. Two rounds of advertisements will take place (one in the Scoping phase and one in the EIA phase) in English.

3. Site Notices

The NEMA EIA Regulations 2014 (as amended in 2017) require that a site notice be fixed at a place conspicuous to the public at the boundary or on the fence of the site where the activity to which the application relates is to be undertaken and on any alternative sites. The purpose of this is to notify the public of the proposed project and to invite the public to register as stakeholders and inform them of the PP Process. Site Notices were placed at the Tubatse Chrome Golf Club, Steelpoort Primary School, Post Office and the proposed Site 3.

4. Public Review of the Draft Consultation Environmental Scoping Report (ESR)

The draft consultation Environmental Scoping Report (ESR) will be made available electronically for a public review period of 30-days, via the Royal HaskoningDHV Website:

<https://www.royalhaskoningdhv.com/en/south-africa/projects/environmental-reports>.

At the time of compilation of this document adjusted level 1 Covid-19 restrictions are in place, therefore it has been proposed that copies of the draft consultation ESR will also be made available at the Fetakgomo Tubatse Municipality Public Library and Municipal Offices and the Tubatse Ferrochrome Smelter offices. These locations have been chosen as they are required to ensure that Covid-19 regulations and protocols are in place according to the Disaster Management Act, 2002,

Should the Covid-19 restrictions increase, the PP Plan will be adjusted with guidance from the DFFE to accommodate these restrictions whilst ensuring a robust and transparent process is conducted.

Limited electronic copies will be distributed to stakeholders who specifically request a copy.

5. Public Review of the Draft Consultation Environmental Impact Report (EIR) and Environmental Management Programme (EMPr)

The draft consultation Environmental Impact Report (EIR) and EMPr will be made available electronically for a public review period of 30-days, via the Royal HaskoningDHV Website:

<https://www.royalhaskoningdhv.com/en/south-africa/projects/environmental-reports>.

At the time of compilation of this document adjusted level 1 restriction covid-19 restrictions are in place, therefore it has been proposed that copies of the draft consultation EIR and EMPr be made available at the Fetakgomo Tubatse Municipality Public Library and Municipal Offices and the Tubatse Ferrochrome Smelter offices. These locations have been chosen as they are required to ensure that Covid-19 regulations and protocols are in place according to the Disaster Management Act, 2002, at the time of compilation of this document adjusted level 1 restrictions are in place.

Should the covid-19 restrictions increase, the PP Plan will be adjusted with guidance from the DFFE to accommodate these restrictions whilst ensuring a robust and transparent process is conducted.

Limited electronic copies will be distributed to stakeholders who specifically request a copy.

6. Meetings

A public participation meeting and two Focus Group Meetings will be conducted in the EIA Phase only, the venue will be chosen taking into consideration the Covid-19 regulations as stipulated in the Disaster Management Act, 2002.

7. Comments and Responses Report (CRR)

A CRR will be compiled with any comments and issues received and responded to which will form part of the submission of the final consultation ESR and EIR.

Comments must be forwarded either via email, letter, by hand or via phone calls (documented in a letter or email thereafter) to:

Seshni Govender
PO Box, 867, Gallo Manor, 2052
Tel: 087 352 1592, Email: Seshni.govender@rhdhv.com

8. Environmental Authorisations

On receipt of the EA (positive or negative) for the proposed project, I&APs registered on the project database will be informed of this decision and its associated terms and conditions as well as the appeal process by email correspondence. An advert will be placed in the local newspaper in the Steelpoort area notifying I&APs of the decision.

Kind Regards

Malcolm Roods
EAP

Project related



Appendix B: I&AP Database

Title	Name	Surname	Organisation
Mr	Anton	Alberts	Steelpoort Primary School
Mr	Dirk	Badenhorst	The South African College of Business
Mr	Obed	Baloyi	Department of Forestry, Fisheries and the Environment
Mr	Maarten	Benecke	Olifantshoel and Diepgezet Farms
Mr	Neels	Beukes	AGS Steelpoort
Mrs	Eva	Bhembe	
Ms	Heather	Booyens	Eastern Chrome Mines
Mr	Hannes	Botha	Mpumalanga Tourism and Parks Agency
Ms	Bianna	Cellier	Platinum Gazette
Mr	Hendrik Stephanus	Coetzee	Plant O' Hire Rentals
Dr	CL	De Jager	
Mr	Loedewyk	De Jager	Eagle Greek Investments 165 (PTY) Ltd
Mr	Pierre	De Villiers	Steelpoort Properties
Mr	Pierre	De Walt	Olifantspoort Chemist
Dr	Martin	Erasmus	Tini (Pty) Ltd Phasha
Mr	Essop	Shaheen	Sasol Garage Steelpoort
Mr	Shadrack	Fhedzisani	Department of Mineral Resources and Energy
Mr	Johan	Fourie	Transnet
Mr	Hendrik	Goosen	Eagle Greek Investments 165 (PTY) Ltd
Mr	Henk	Goosen	DR Henk Goosen
Mr	L	Gouws	Five Star Butchery
Mrs	Jan	Graham	Olifantspoortjie Guesthouse
Mr	Coert	Grobbelaar	Izinyoni Trading 349 (PTY) Ltd
Mr	Matthew	Hayden	Trade Plus Aid
Mr	Henry	Herbert	Plant O' Hire Rentals
Mr	Phillip	Hine	South African Heritage Resources Agency
Mr	Love	Hlekane	Department of Human Settlements, Water and Sanitation
Mr	Jakes	Jacobs	Two Rivers Platinum Mine
Mr	Glen	Janse van Rensburg	Kremetart Guesthouse
Mr	Nick	Janse van Rensburg	Kremetart Guesthouse
Mr	Juta	Kgokong	Tubatse Ferrochrome (Pty) Limited
Mr	Aaron	Khariwe	Department of Mineral Resources and Energy
Mr	Henry	Knoetze	Steelpoort Transport
Mr	Thivhulawi	Kolani	Department of Mineral Resources and Energy
Mr	Martha	Komape	Department of Human Settlements, Water and Sanitation
Mr	Henry	Language	Plant O' Hire CC
Dr	Ian	Little	Endangered Wildlife Trust
Mr	Donald Hangwani	Mabada	Department of Human Settlements, Water and Sanitation
Mr	Lesitlane	Mabelane	
Mr	Stanford	Macevele	Department of Human Settlements, Water and Sanitation
Mr	Solomon	Magashule	Global Unity Environment
Mr	Johannes	Magoane	Bathopele Community Development Forum
Mr	Tshepo	Magongwa	Limpopo Department of Economic Development
Mr	Lucas	Mahlangu	Department of Forestry, Fisheries and the Environment
Mr	Patrick	Makine	Fetakgomo-Greater Tubatse Local Municipality-Ward 2 Councillor
Mr	Steve	Makuwa	Limpopo Department of Economic Development
Mr	David	Malapane	Batho Pele Forum (Ga-mampuru village)
Mr	Kgosi	Malekane	Kgamalekana Tribal Authority
Mr	Frans	Mampuru	Mampuru Moshate (Traditional Council)
Mr	Jackson	Mampuru	Mampuru Moshate (Traditional Council)
Kgoshi	Makopele Herbert	Mampuru	BabinaNoko-Ba-Mampuru Royal Council
Mrs	Maria	Manamela	ANC Womens League
Ms	Tebogo	Mangaba	Department of Mineral Resources
Ms	Brenda	Maphanga	Department of Environmental Affairs
Mr	Ephraim	Maphanga	
Mr	Tele	Maphoto	Department of Rural Development and Land
Mrs	Delia	Mare	Golder Associates
Mr	Joggie	Mare	GPM Services
			Pulana Maroga Tribal Authority
Ms	Koena Johanna	Masebe	Fetakgomo Tubatse Local Municipality
Ms	Norah	Maseko	Sekhukhune District Municipality
Mr	Tshepo	Maselela	Limpopo Department of Economic Development
Ms	Marencia	Mashilo	Department of Human Settlements, Water and Sanitation
Ms	Maggy	Masufi	Ga-Phasha
Mr	M.A	Mathebula	Fetakgomo - Greater Tubatse Local Municipality
Mr	Thomas	Matlebane	Regray Security
Ms	Doris	Maumela	Department of Human Settlements, Water and Sanitation

Ms	Mahlogonolo	Mengwai	Fetakgomo - Greater Tubatse Local Municipality
Mr	Peter	Mokwena	Provincial Heritage Authority Gauteng
Mr	Mandla	Mona	Department of Forestry, Fisheries and the Environment
Mr	Victor	Mongwe	Limpopo Department of Economic Development
Mr	George	Mosehla	Bagaugelwa (Pty) Ltd
Mr	Petrus	Mosehla	Global Unity
Mr	Phillip	Mosima	Department of Labour
Mr	Moses	Mqhayi	Global Unity Environment
Ms	Faith	Mugivhi	ASA Metals
Mr	Hendrie	Mulder	Thembaletu Bus Services
Ms	Johanna Susanna Corneli	Naude	Goldenspot Trading 682
Mr	Roget	Naude	Goldenspot Trading 682
Mr	Andrew	Nkosi	
Mr	Daniel	Nkosi	Global Unity Environment
Mr	January	Nkosi	Global Unity Environment
Miss	Modega	Phasha	Phasha Royal Council
Mr	Paul	Phasha	Mampuru Moshate (Traditional Council)
Mr	David Puleng	Phurutsi	Mafathe Development
Mr	Piere	Pienaar	Steelpoort Bricks and Paving
Mrs	Antoinette	Pietersen	Golder Associates
Ms	Bridget	Pilusa	Sekhukhune District Municipality
Mrs	Martie	Plessis	Didingwe Lodge - Moreson of Northcliff
Mr	JP	Prinsloo	JP Guesthouse
Ms	Samantha	Ralston-Paton	Birdlife South Africa
Mr	John	Rosmaryn	Investec/Flashfin
Mr	Mohamed	Safraez	Sasol Garage Steelpoort
Mr	Shiba	Sebone	Department of Forestry, Fisheries and the Environment
Mr	Dube	Serage	Spitzkop Community, Bathopele development
Ms	Mukondeleli	Siminya	Limpopo Department of Economic Development
Ms	Puseletso	Tau	Tubatse Chrome (Pty) Limited
Ms	Palesa	Tjebane	Sekhukhune District Municipality
Mr	Marius	van der Merwe	Cash Build Steelpoort
Mr	P	Van Niekerk	Van Niekerk Stene
Mr	Peter Charles Brian	Van Niekerk	Izinyoni Trading 349 (PTY) Ltd
Ms	Ansie	Viljoen	Goldbroz
Mr	Piet	Viljoen	Steelpoort Diesel
Mr	Dawe	Wessels	Ngululu Bulk Carriers

Appendix C: Proof of Notification

From: [Seshni Govender](#)
To: [REDACTED]
Subject: Public Participation: Scoping And Environmental Impact Assessment for the 60MWp Photovoltaic Plant Associated with the Tubatse Ferrochrome Smelter, Steelpoort, Fetakgomo Tubatse Local Municipality
Date: Tuesday, 08 June 2021 16:56:00
Attachments: [EIA PV Plant Steelpoort BID Final.pdf](#)
Importance: High



Dear Councillor Mohlala

Notice is hereby given in terms of the Environmental Impact Assessment (EIA) Regulations, 2014 (as amended in 2017) published in Government Notice Regulation (GNR) 324, in terms of Section 24(5) of the National Environmental Management Act - NEMA (Act No. 107 of 1998) (as amended) and the National Water Act – NWA (Act No. 36 of 1998) (as amended) of the initiative by Samancor Chrome Ltd (Samancor), to apply for an environmental authorisation and water use authorisation for a 60MWp Photovoltaic (PV) Plant associated with the Tubatse Ferrochrome Smelter in the Fetakgomo Tubatse Local Municipality.

Please find attached a Background Information Document which provides details regarding the project as well as how you can become involved during the process.

Regards

Seshni Govender (*Pr. Sci. Nat.*)
Environmental Consultant

D 087 352 1592 | E seshni.govender@rhdhv.com | W www.rhdhv.co.za
Royal HaskoningDHV (Pty) Ltd trading as Royal HaskoningDHV | Reg No. 1966/001916/07
Building No. 5 Country Club Estate, 21 Woodlands Drive, Woodmead, 2191
PO Box 867, Gallo Manor, 2052, Gauteng, South Africa



 **Please, consider your environment.**

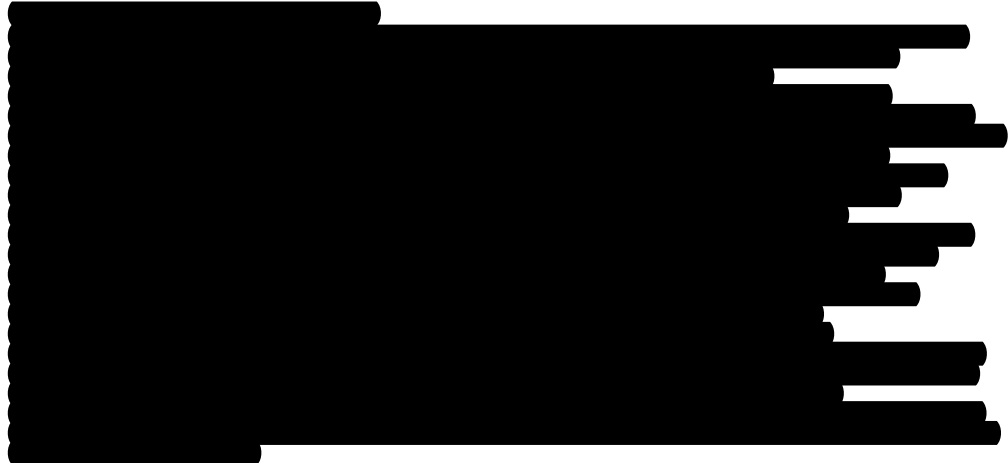
Before printing this e-mail ask yourself: "Do I need a hard copy?"

This e-mail and any files transmitted with it are confidential and intended solely for the authorised use of the individual or entity to whom they are addressed. If you have received this e-mail in error, Please notify mailadm-za@rhdhv.com and delete all copies of the e-mail. Any views or opinions expressed in this e-mail are not necessarily those of, nor endorsed by, the Royal HaskoningDHV Group. Information disclosed in this e-mail may not be accurate, current or complete and the Royal HaskoningDHV Group disclaims all liability in this regard.

From: [Seshni Govender](#)

Cc:

Bcc:



Subject: Public Participation: Scoping And Environmental Impact Assessment for the 60MWp Photovoltaic Plant Associated with the Tubatse Ferrochrome Smelter, Steelpoort, Fetakgomo Tubatse Local Municipality

Date: Tuesday, 01 June 2021 08:34:00

Attachments: [EIA PV Plant Steelpoort BID Final.pdf](#)

Importance: High



Dear Stakeholder

Notice is hereby given in terms of the Environmental Impact Assessment (EIA) Regulations, 2014 (as amended in 2017) published in Government Notice Regulation (GNR) 324, in terms of Section 24(5) of the National Environmental Management Act - NEMA (Act No. 107 of 1998) (as amended) and the National Water Act – NWA (Act No. 36 of 1998) (as amended) of the initiative by Samancor Chrome Ltd (Samancor), to apply for an environmental authorisation and water use authorisation for a 60MWp Photovoltaic (PV) Plant associated with the Tubatse Ferrochrome Smelter in the Fetakgomo Tubatse Local Municipality.

Please find attached a Background Information Document which provides details regarding the project as well as how you can become involved during the process.

Regards

Seshni Govender (*Pr. Sci. Nat.*)

Environmental Consultant

D 087 352 1592 | E seshni.govender@rhdhv.com | W www.rhdhv.co.za
Royal HaskoningDHV (Pty) Ltd trading as Royal HaskoningDHV | Reg No. 1966/001916/07
Building No. 5 Country Club Estate, 21 Woodlands Drive, Woodmead, 2191
PO Box 867, Gallo Manor, 2052, Gauteng, South Africa



Please, consider your environment.

Before printing this e-mail ask yourself: "Do I need a hard copy?"

This e-mail and any files transmitted with it are confidential and intended solely for the authorised use of the individual or entity to whom they are addressed. If you have received this e-mail in error, Please notify mailadm-za@rhdhv.com and delete all copies of the e-mail. Any views or opinions expressed in this e-mail are not necessarily those of, nor endorsed by, the Royal HaskoningDHV Group. Information disclosed in this e-mail may not be accurate, current or complete and the Royal HaskoningDHV Group disclaims all liability in this regard.

**Environmental Impact Assessment and Water Use Authorisation Process for the 60MWp
Photovoltaic Plant Associated with the Tubatse Ferrochrome Smelter, Steelpoort, Fetakgomo
Tubatse Local Municipality-
Interested and Affected Party Postage List**

Mrs Eva Bhembe

[REDACTED]

REGISTERED LETTER
(with a domestic insurance option)
ShareCall 0860 111 502 www.sapo.co.za
RC458673179ZA
CUSTOMER COPY 301028R

Mr Hendrik Stephanus Coetzee

[REDACTED]

REGISTERED LETTER
(with a domestic insurance option)
ShareCall 0860 111 502 www.sapo.co.za
RC458673165ZA
CUSTOMER COPY 301028R

Dr Cl. De Jager

[REDACTED]

REGISTERED LETTER
(with a domestic insurance option)
ShareCall 0860 111 502 www.sapo.co.za
RC458673148ZA
CUSTOMER COPY 301028R

Mr Loedewyk De Jager

[REDACTED]

REGISTERED LETTER
(with a domestic insurance option)
ShareCall 0860 111 502 www.sapo.co.za
RC458673134ZA
CUSTOMER COPY 301028R

Mr Pierre De Villiers

[REDACTED]

REGISTERED LETTER
(with a domestic insurance option)
ShareCall 0860 111 502 www.sapo.co.za
RC458673125ZA
CUSTOMER COPY 301028R

Mr Hendrik Goosen

[REDACTED]

REGISTERED LETTER
(with a domestic insurance option)
ShareCall 0860 111 502 www.sapo.co.za
RC458673085ZA
CUSTOMER COPY 301028R

Mr L Gouws

[REDACTED]

REGISTERED LETTER
(with a domestic insurance option)
ShareCall 0860 111 502 www.sapo.co.za
RC458673077ZA
CUSTOMER COPY 301028R

Mr Coert Grobbelaar

[REDACTED]

REGISTERED LETTER
(with a domestic insurance option)
ShareCall 0860 111 502 www.sapo.co.za
RC458673046ZA
CUSTOMER COPY 301028R

Mr Henry Herbert

[REDACTED]

REGISTERED LETTER
(with a domestic insurance option)
ShareCall 0860 111 502 www.sapo.co.za
RC458673117ZA
CUSTOMER COPY 301028R

S. Masi



Mr David Malapane

[Redacted]

REGISTERED LETTER
(with a domestic insurance option)
ShareCall 0860 111 502 www.sapo.co.za
RC458673063ZA
CUSTOMER COPY 301028R

Mr Frans Mampuru

[Redacted]

REGISTERED LETTER
(with a domestic insurance option)
ShareCall 0860 111 502 www.sapo.co.za
RC458673050Z
CUSTOMER COPY 301028R

Mr Jackson Mampuru

[Redacted]

REGISTERED LETTER
(with a domestic insurance option)
ShareCall 0860 111 502 www.sapo.co.za
RC458673103ZA
CUSTOMER COPY 301028R

Mrs Maria Manamela

[Redacted]

REGISTERED LETTER
(with a domestic insurance option)
ShareCall 0860 111 502 www.sapo.co.za
RC458673032ZA
CUSTOMER COPY 301028R

Mr Ephraim Maphanga

[Redacted]

REGISTERED LETTER
(with a domestic insurance option)
ShareCall 0860 111 502 www.sapo.co.za
RC458672981ZA
CUSTOMER COPY 301028R

Mr Joggie Mare

[Redacted]

REGISTERED LETTER
(with a domestic insurance option)
ShareCall 0860 111 502 www.sapo.co.za
RC458673029ZA
CUSTOMER COPY 301028R

Pulana Maroga Tribal Authority

[Redacted]

REGISTERED LETTER
(with a domestic insurance option)
ShareCall 0860 111 502 www.sapo.co.za
RC458673094ZA
CUSTOMER COPY 301028R

Ms Maggy Masufi

[Redacted]

REGISTERED LETTER
(with a domestic insurance option)
ShareCall 0860 111 502 www.sapo.co.za
RC458672978ZA
CUSTOMER COPY 301028R

Mr Thomas Matlebane

[Redacted]

REGISTERED LETTER
(with a domestic insurance option)
ShareCall 0860 111 502 www.sapo.co.za
RC458672964ZA
CUSTOMER COPY 301028R

S Masu



Ms Johanna Susanna Corneli Naude

REGISTERED LETTER
(with a domestic insurance option)
ShareCall 0860 111 502 www.sapo.co.za
RC458673182ZA
CUSTOMER COPY 301028R

Mr Rogert Naude

REGISTERED LETTER
(with a domestic insurance option)
ShareCall 0860 111 502 www.sapo.co.za
RC458672955ZA
CUSTOMER COPY 301028R

Mr Andrew Nkosi

REGISTERED LETTER
(with a domestic insurance option)
ShareCall 0860 111 502 www.sapo.co.za
RC458673253ZA
CUSTOMER COPY 301028R

Mr Paul Phasha

REGISTERED LETTER
(with a domestic insurance option)
ShareCall 0860 111 502 www.sapo.co.za
RC458673196ZA
CUSTOMER COPY 301028R

Ms Mukondeleli Siminya

REGISTERED LETTER
(with a domestic insurance option)
ShareCall 0860 111 502 www.sapo.co.za
RC458673151ZA
CUSTOMER COPY 301028R

Mr P Van Niekerk
Van Niekerk Stene

REGISTERED LETTER
(with a domestic insurance option)
ShareCall 0860 111 502 www.sapo.co.za
RC458673001ZA
CUSTOMER COPY 301028R

Mr Peter Charles Brian Van Niekerk

Mr Dirk Badenhorst

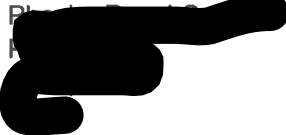
REGISTERED LETTER
(with a domestic insurance option)
ShareCall 0860 111 502 www.sapo.co.za
RC458672995ZA
CUSTOMER COPY 301028R

Ms Tebogo Mangaba

REGISTERED LETTER
(with a domestic insurance option)
ShareCall 0860 111 502 www.sapo.co.za
RC458673205ZA
CUSTOMER COPY 301028R

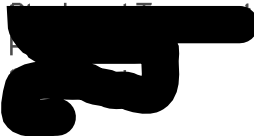


Miss Modega Phasha



REGISTERED LETTER
(with a domestic insurance option)
ShareCall 0860 111 502 www.sapo.co.za
RC458673219ZA
CUSTOMER COPY 301028R

Mr Henry Knoetze



REGISTERED LETTER
(with a domestic insurance option)
ShareCall 0860 111 502 www.sapo.co.za
RC458673015ZA
CUSTOMER COPY 301028R

Mr Dube Serage



REGISTERED LETTER
(with a domestic insurance option)
ShareCall 0860 111 502 www.sapo.co.za
RC458673236ZA
CUSTOMER COPY 301028R

Mr David Puleng Phurutsi



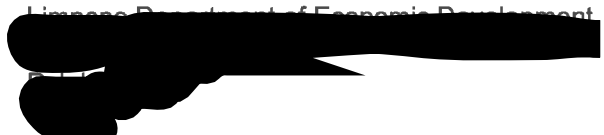
REGISTERED LETTER
(with a domestic insurance option)
ShareCall 0860 111 502 www.sapo.co.za
RC458673222ZA
CUSTOMER COPY 301028R

Mr Victor Mongwe



REGISTERED LETTER
(with a domestic insurance option)
ShareCall 0860 111 502 www.sapo.co.za
RC458673267ZA
CUSTOMER COPY 301028R

Mr Tshepo Maselela



REGISTERED LETTER
(with a domestic insurance option)
ShareCall 0860 111 502 www.sapo.co.za
RC458673240ZA
CUSTOMER COPY 301028R



Appendix D: Notification Documents

NOTICE OF APPLICATIONS FOR ENVIRONMENTAL & WATER USE AUTHORISATION

ENVIRONMENTAL IMPACT ASSESSMENT AND WATER USE AUTHORISATION PROCESS FOR THE 60MWp PHOTOVOLTAIC PLANT ASSOCIATED WITH THE SAMANCOR TUBATSE FERROCHROME PLANT, STEELPOORT, FETAKGOMO TUBATSE LOCAL MUNICIPALITY

MAY 2021



DFFE REFERENCE NUMBER: TBC

DHSW&S REFERENCE NUMBER: TBC

Notice is hereby given in terms of the Environmental Impact Assessment (EIA) Regulations, 2014 (as amended in 2017) published in Government Notice Regulation (GNR) 324 - GNR 327, in terms of Section 24(5) of the National Environmental Management Act - NEMA (Act No. 107 of 1998) (as amended) and the National Water Act – NWA (Act No. 36 of 1998) (as amended) of the initiative by **Samancor Chrome Ltd (Samancor)**, to apply for an environmental authorisation for a **60MWp Photovoltaic (PV) Plant associated with the Tubatse Ferrochrome (TFC) Plant in the Fetakgomo Tubatse Local Municipality**.

With respect of the above, the Applicant, Samancor intends undertaking an **Environmental Impact Assessment** process as contemplated in the EIA Regulations, 2014 (as amended in 2017) for the process of applying for authorisation for the above proposed development to the Competent Authority, the **Department of Forestry, Fisheries and the Environment (DFFE)** as well as applying for a **Water Use Authorisation (WUA)** to the Competent Authority, the **Department of Human Settlements, Water and Sanitation (DHSW&S)** as contemplated in Chapter 4 of the NWA.

Name of Applicant	Samancor Chrome Ltd										
Project Name	Scoping and Environmental Impact Assessment and Water Use Authorisation Process for the 60MWp PV Plant associated with the TFC Plant, Steelpoort, Fetakgomo Tubatse Local Municipality										
District and Local Authorities	District: Sekhukhune District Municipality Local: Fetakgomo Tubatse Local Municipality										
Project Nature	<p>The PV plant will consist of the following infrastructure:</p> <ul style="list-style-type: none"> Solar PV panels that will be able to deliver up to 60MWp to the Samancor grid; Inverters that convert direct current (DC) generated by the PV modules into alternating current (AC) to be exported to the electrical grid; Transformer/ s that raises the system AC low voltage to medium voltage; Transformer substation; and Instrumentation and Control consisting of hardware and software for remote plant monitoring and operation of the facility. <p>Associated infrastructure includes:</p> <ul style="list-style-type: none"> Mounting structures for the solar panels in a fixed tilt of rotating tracking configuration; Cabling between the structures, to be laid underground where practical; New 33kV overhead powerlines between the various sites and the Tubatse East and -West substation buildings; Local substation and transformer yard at each PV site; Containerized switchgear substation at Tubatse East and -West MV substations for connecting to the Tubatse substation busbars; Water provision infrastructure (i.e. pipeline/ s, storage tank/ s, etc.) for PV panel cleaning; Battery Energy Storage System (BESS); and Internal access roads (4 - 6 m wide roads will be constructed but existing roads will be used as far as possible), fencing (approximately 3m in height), gates and access control. 										
Project Location & Coordinates	<p>The project area (consisting of 5 sites to be assessed for the placement of PV infrastructure) is located on opposite sides of the R555 and to the south of the Steelpoort River, Limpopo Province. The project area falls within the Sekhukhune District Municipality and the Fetakgomo Tubatse Local Municipality. Small settlements of Pelaneng (located to the north), Stocking, Matholeng, Mohlakwana (located to the east) of the project area. The town of Steelpoort is located to the east of the TFC Plant.</p> <table border="1"> <tr> <td>Site 1</td> <td>A: 24°43'30.95"S; 30°12'17.90"E; B: 24°43'23.19"S; 30°12'28.77"E; C: 24°43'49.79"S; 30°12'35.35"E; D: 24°43'47.76"S; 30°12'49.14"E</td> </tr> <tr> <td>Site 2</td> <td>A: 30°12'49.14"E; 30°12'20.34"E; B: 24°43'58.24"S; 30°12'56.69"E; C: 24°44'17.25"S; 30°12'27.04"E; D: 24°43'59.71"S; 30°13'9.60"E</td> </tr> <tr> <td>Site 3</td> <td>A: 24°44'42.12"S; 30°11'0.18"E; B: 24°44'35.95"S; 30°11'12.16"E; C: 24°44'49.89"S; 30°11'22.57"E; D: 24°44'48.55"S; 30°11'10.47"E</td> </tr> <tr> <td>Site 4</td> <td>A: 24°44'51.21"S; 30°10'48.40"E; B: 24°44'48.61"S; 30°10'53.18"E; C: 24°45'10.27"S; 30°11'7.17"E; D: 24°45'14.29"S; 30°11'2.86"E</td> </tr> <tr> <td>Site 5</td> <td>A: 24°44'31.56"S; 30°10'38.04"E; B: 24°44'0.79"S; 30°11'11.95"E; C: 24°44'31.94"S; 30°11'11.66"E; D: 24°44'46.60"S; 30°10'44.51"E</td> </tr> </table>	Site 1	A: 24°43'30.95"S; 30°12'17.90"E; B: 24°43'23.19"S; 30°12'28.77"E; C: 24°43'49.79"S; 30°12'35.35"E; D: 24°43'47.76"S; 30°12'49.14"E	Site 2	A: 30°12'49.14"E; 30°12'20.34"E; B: 24°43'58.24"S; 30°12'56.69"E; C: 24°44'17.25"S; 30°12'27.04"E; D: 24°43'59.71"S; 30°13'9.60"E	Site 3	A: 24°44'42.12"S; 30°11'0.18"E; B: 24°44'35.95"S; 30°11'12.16"E; C: 24°44'49.89"S; 30°11'22.57"E; D: 24°44'48.55"S; 30°11'10.47"E	Site 4	A: 24°44'51.21"S; 30°10'48.40"E; B: 24°44'48.61"S; 30°10'53.18"E; C: 24°45'10.27"S; 30°11'7.17"E; D: 24°45'14.29"S; 30°11'2.86"E	Site 5	A: 24°44'31.56"S; 30°10'38.04"E; B: 24°44'0.79"S; 30°11'11.95"E; C: 24°44'31.94"S; 30°11'11.66"E; D: 24°44'46.60"S; 30°10'44.51"E
Site 1	A: 24°43'30.95"S; 30°12'17.90"E; B: 24°43'23.19"S; 30°12'28.77"E; C: 24°43'49.79"S; 30°12'35.35"E; D: 24°43'47.76"S; 30°12'49.14"E										
Site 2	A: 30°12'49.14"E; 30°12'20.34"E; B: 24°43'58.24"S; 30°12'56.69"E; C: 24°44'17.25"S; 30°12'27.04"E; D: 24°43'59.71"S; 30°13'9.60"E										
Site 3	A: 24°44'42.12"S; 30°11'0.18"E; B: 24°44'35.95"S; 30°11'12.16"E; C: 24°44'49.89"S; 30°11'22.57"E; D: 24°44'48.55"S; 30°11'10.47"E										
Site 4	A: 24°44'51.21"S; 30°10'48.40"E; B: 24°44'48.61"S; 30°10'53.18"E; C: 24°45'10.27"S; 30°11'7.17"E; D: 24°45'14.29"S; 30°11'2.86"E										
Site 5	A: 24°44'31.56"S; 30°10'38.04"E; B: 24°44'0.79"S; 30°11'11.95"E; C: 24°44'31.94"S; 30°11'11.66"E; D: 24°44'46.60"S; 30°10'44.51"E										
Property Details	<ul style="list-style-type: none"> Site 1: Goudmyn 337 Ptn 00001, Olifantspoortje 319 Ptn 00005 Site 2: Goudmyn 337 Ptn 00010 & Ptn 00001, Olifantspoortje 319 Ptn 00000 & Ptn 00003 Sites: 3, 4 & 5: Goudmyn 337 Ptn 00000 Site 6: Goudmyn 337 Ptn 00000 & Ptn 00006 										
Competent Authority	Department of Forestry, Fisheries and the Environment (DFFE)										
Listed Activities	<p>The following listed activities will be applied for (to be confirmed):</p> <ul style="list-style-type: none"> Listing Notice 1 – GNR 327: Activity 9, 11, 12, 19, 24, 28 and 56 Listing Notice 2 – GNR 325: Activity 1, 4 and 15 Listing Notice 3 – GNR 324: Activity 4(e)(i), 10(e)(i), 12(e) and 14(e)(i) 										
Water Uses	<p>The following water uses in terms of Section 21 of the NWA are being applied for (to be confirmed):</p> <ol style="list-style-type: none"> Section 21 a: Taking water from a water resource Section 21 c: Impeding or diverting the flow of water in a watercourse (applicable for water crossings and / or infrastructure within 500m to the regulated wetland area) Section 21 i: Altering the bed, banks, course or characteristics of a watercourse (applicable for water crossings and / or infrastructure within 500m to the regulated wetland area) 										
How to Register	<p>You can register as an Interested and Affected Party (I&AP) or request additional information by:</p> <ul style="list-style-type: none"> Contacting the Public Participation Consultant directly (contact details provided below), or Submitting written comments to Royal HaskoningDHV (via post or e-mail). <p>I&APs are requested to provide their name and surname, contact information and interest in the project to the environmental consultant. Kindly note that I&APs will be notified in due course of the availability of the draft report for public review.</p>										
Public Participation Consultant	<p>Seshni Govender</p> <p>E-mail seshni.govender@rhdhv.com</p> <p>PO Box 867 Gallo Manor 2052</p> <p>Tel 087 352 1592</p>										

ENVIRONMENTAL IMPACT ASSESSMENT AND WATER USE AUTHORISATION PROCESS FOR THE 60MWp PHOTOVOLTAIC PLANT ASSOCIATED WITH THE TUBATSE FERROCHROME SMELTER, STEELPOORT, FETAKGOMO TUBATSE LOCAL MUNICIPALITY

BACKGROUND INFORMATION DOCUMENT
(JUNE 2021)



DFFE REF: TBC

DHSW&S Ref: TBC

WHAT DOES THIS DOCUMENT TELL YOU?

This document aims to inform you as an Interested and Affected Party (I&AP), with background information regarding the development of a 60MWp Photovoltaic (PV) Plant associated with the Tubatse Ferrochrome (TFC) Smelter, Steelpoort, Fetakgomo Tubatse Local Municipality.

The document also provides information regarding the Environmental Impact Assessment (EIA) and Water Use Authorisation (WUA) Processes to be undertaken. The document advises you on how you can become involved in the project – by reviewing information, and making inputs thereon, including raising any possible issues and concerns. This sharing of information forms the basis of the Public Participation Process (PPP) and offers you the opportunity to become actively involved in the project from the outset.

PROPERTY DESCRIPTION

The project area is located on opposite sides of the R555 and to the south of the Steelpoort River, Limpopo Province. The project area falls within the Sekhukhune District Municipality and the Fetakgomo Tubatse Local Municipality. Small settlements of Pelaneng (located to the north), Stocking, Matholeng and Mohlakwana (located to the east) exist within the project area. The town of Steelpoort is located to the east of the TFC Smelter.

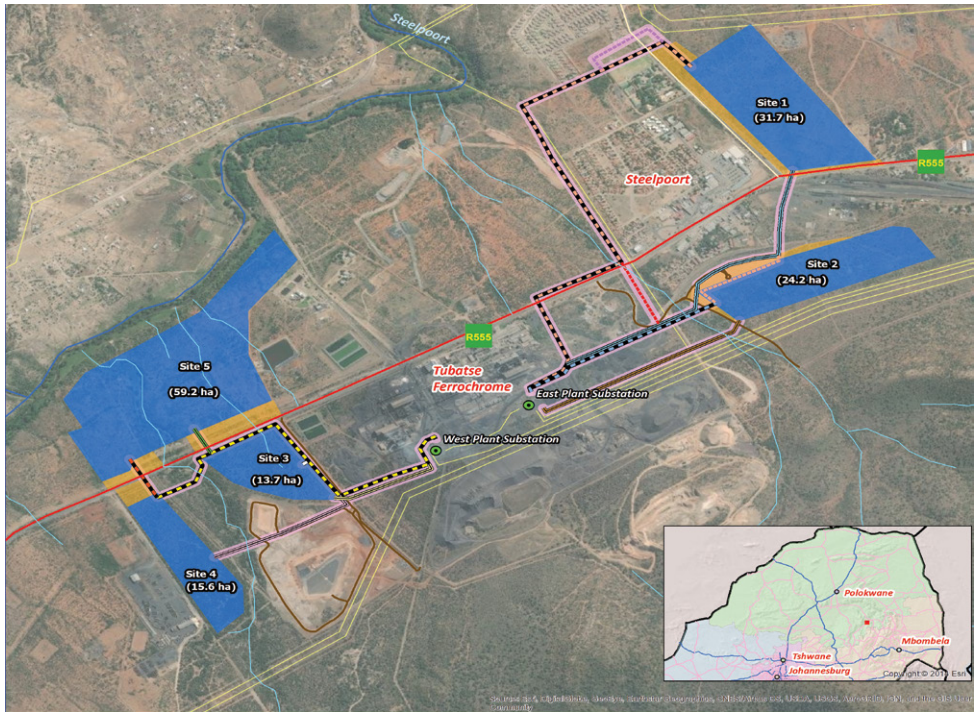
PROJECT DESCRIPTION

Five (5) potential sites are being assessed in the Scoping Study for the placement of PV infrastructure as shown in the Locality map - Figure 1.

The details of the sites are provided below:

Site Number	Size (ha)	Farm Details
1	31.7	Goudmyn 337 Ptn 00001
2	24.2	Goudmyn 337 Ptn 00010 & Ptn 00001
3	13.7	Goudmyn 337 Ptn 00000
4	15.6	Goudmyn 337 Ptn 00000
5	59.2	Goudmyn 337 Ptn 00000 & Ptn 00006

Environmental Impact Assessment for the Establishment of a Solar Based Electricity Generation System - 60MWp Photovoltaic Plant at the Tubatse Ferrochrome Smelter, Steelpoort



Legend



Scale 1:15 000



Figure 1: Locality map

The PV plant will consist of the following infrastructure:

- Solar PV panels that will be able to deliver up to 60MWp to the Samancor grid;
- Inverters that convert direct current (DC) generated by the PV modules into alternating current (AC) to be exported to the Samancor grid;
- Transformer/ s that raises the system AC low voltage to medium voltage. The transformer converts the voltage of the electricity generated by the PV panels to the correct voltage for delivery to the TFC Smelter;
- Transformer substation; and
- Instrumentation and Control consisting of hardware and software for remote plant monitoring and operation of the facility.

Associated infrastructure includes:

- Mounting structures for the solar panels in a fixed tilt of rotating tracking configuration;
- Cabling between the structures, to be laid underground where practical;
- New 33kV overhead powerlines between the various sites and the Tubatse East and -West substation buildings;
- Local substation and transformer yard at each PV site;
- Containerized switchgear substation at Tubatse East and -West MV substations for connecting to the Tubatse substation busbars;
- Water provision infrastructure (i.e. pipeline/ s, storage tank/ s, etc.) for PV panel cleaning;
- Battery Energy Storage System (BESS); and
- Internal access roads (4 - 6m wide roads will be constructed, but existing roads will be used as far as possible), fencing (approximately 3m in height), gates and access control.





WHAT THE POTENTIAL ENVIRONMENTAL IMPACTS ASSOCIATED WITH THE PROPOSED PROJECT?


A number of potential environmental impacts associated with the project have been identified. As part of the EIA and WUA studies, these potential impacts will be assessed through the following specialist studies:



Specialist Study	Organisation
Avifauna	Royal HaskoningDHV
Agriculture	Johann Lanz
Biodiversity	Bathusi Environmental Consulting
Heritage & Palaeontology	PGS Heritage
Social Baseline	Royal HaskoningDHV
Hydrology	GCS Water & Environmental Consultants
Freshwater	Scientific Aquatic Services
Climate Change	Royal HaskoningDHV
Peer Review – Avifauna	Ecological Logistics
Peer Review - Climate Change	Themis Environmental
Peer Review - Scoping and Environmental Reports	W&L Consultants
Peer Review – Social Baseline	NLN Consulting

WHY ARE ENVIRONMENTAL STUDIES NEEDED?

In terms of the Environmental Impact Assessment (EIA) Regulations Government Notice Regulation (GNR) 324 – 327, published in terms of Section 24(5), and read with Section 44, of the National Environmental Management Act (NEMA) (Act No. 107 of 1998), Samancor Chrome Ltd requires an Environmental Authorisation from the Department of Forestry, Fisheries and the Environment (DFFE) for undertaking the proposed project as it includes electrical generation and transmission activities listed under Listing Notices 1 - 3 of the EIA Regulations 2014 (as amended in 2017).



The following activities of Listing Notice 1, 2 and 3 are triggered:

Listing Notice	Activity Number	Description and Applicability
1 (GNR 327)	9	<p>The development of infrastructure exceeding 1,000m in length for the bulk transportation of water or stormwater – (i) with an internal diameter of 0.36m or more; or (ii) with a peak throughput of 120l/s or more.</p> <p><i>Applicable to the water pipelines associated with the construction and maintenance activities for the 60MWp PV Plant.</i></p>
	11	<p>The development of facilities or infrastructure for the transmission and distribution of electricity outside urban areas or industrial complexes with a capacity of more than 33kV but less than 275kV.</p> <p><i>Applicable to the new 33kV overhead power lines between the various sites and the Tubatse East and -West substation buildings.</i></p>
	12	<p>The development of infrastructure or structures with a physical footprint of 100m² or more; where such development occurs – within a watercourse or if no development setback exists, within 32m of a watercourse, measured from the edge of a watercourse.</p> <p><i>To be confirmed by the Freshwater assessment.</i></p>
	19	<p>The infilling or depositing of any material of more than 10m³ into, or the dredging, excavation, removal or moving of soil, sand, shells, shell grit, pebbles or rock of more than 10m³ from a watercourse.</p> <p><i>To be confirmed by the Freshwater assessment.</i></p>
	24	<p>The development of a road - (i) for which an environmental authorisation was obtained for the route determination in terms of activity 5 in Government Notice 387 of 2006 or activity 18 in Government Notice 545 of 2010; or (ii) with a reserve wider than 13,5 meters, or where no reserve exists where the road is wider than 8 metres.</p> <p><i>Applicable to the development of internal access roads associated with the 60MWp PV Plant.</i></p>
	28	<p>Residential, mixed, retail, commercial, industrial or institutional developments where such land was used for agriculture on or after 01 April 1998 and where such development will occur outside an urban area, where the total land to be developed is bigger than 1ha.</p> <p><i>The development of the solar facility will involve the transformation of approximately 150ha of agricultural land. The project site is located outside an urban area.</i></p>
	56	<p>The widening of a road by more than 6m, or the lengthening of a road by more than 1km –</p> <p>(i) where the existing reserve is wider than 13.5m; or (ii) where no reserve exists, where the existing road is wider than 8m; excluding where widening or lengthening occur inside urban areas.</p> <p><i>Applicable to the widening of existing access roads.</i></p>

Listing Notice	Activity Number	Description and Applicability
<p style="text-align: center;">2 (GNR 325)</p>	1	<p>The development of facilities or infrastructure for the generation of electricity from a renewable resource where the electricity output is 20MW or more.</p> <p><i>The electricity generation capacity of the PV plant will be 60MWp.</i></p>
	4	<p>The development and related operation of facilities or infrastructure, for the storage, or storage and handling of a dangerous good, where such storage occurs in containers with a combined capacity of more than 500m³.</p> <p><i>The PV plant will have its own BESS with a combined capacity of dangerous good exceeding 500m³.</i></p>
	15	<p>The clearance of an area of 20ha or more of indigenous vegetation.</p> <p><i>The construction of the proposed PV plant will require the clearance of approximately 150ha of indigenous vegetation.</i></p>
<p style="text-align: center;">3 (GNR 324)</p>	4	<p>The development of a road wider than 4m with a reserve less than 13.5m. In Limpopo – Critical biodiversity areas as identified in systematic biodiversity plans adopted by the competent authority or in bioregional plans.</p> <p><i>Internal access roads (4 – 6m wide roads will be constructed but existing roads will be used as far as possible). To be confirmed by the Biodiversity assessment.</i></p>
	10	<p>The development and related operation of facilities or infrastructure for the storage, or storage and handling of a dangerous good, where such storage occurs in containers with a combined capacity of 30m³ but not exceeding 80m³. In Limpopo.</p> <p><i>The use of a BESS (configuration still to be determined). To be confirmed by the Biodiversity assessment.</i></p>
	12	<p>The clearance of an area of 300m² or more of indigenous vegetation except where such clearance of indigenous vegetation is required for maintenance purposes undertaken in accordance with a maintenance management plan.</p> <p><i>Development of the 60MWp PV Plant and associated infrastructure. To be confirmed by the Biodiversity and Freshwater assessments.</i></p>
	14	<p>The development of infrastructure or structures with a physical footprint of 10m² or more; where such development occurs within a watercourse or within 32m of a watercourse, measured from the edge of a watercourse. In Limpopo – Critical biodiversity areas as identified in bioregional plans.</p> <p><i>Development of the 60MWp PV Plant and associated infrastructure. To be confirmed by the Biodiversity assessment.</i></p>

Since Listing Notice 2 activities of the EIA Regulations 2014 (as amended in 2017) are triggered, a S&EIA procedure as contemplated in Regulation 21, 22, 23 and 24 of the EIA Regulations 2014 (as amended in 2017), must be followed in order to obtain environmental authorisation.

Additionally, as the project involves the crossing of watercourses, a **Water Use Authorisation** application will be submitted to the **Department of Human Settlements, Water and Sanitation (DHSW&S)** as per **Sections 21 (a), (c) and (i)** of the National Water Act (Act No. 36 of 1998) (as amended).

The following water uses in terms of Section 21 of the NWA are being applied for:

- **Section 21 a:** Taking water from a water resource (*subject to confirmation if alternative water sources may be used then this water use will no longer be applicable*);
- **Section 21 c:** Impeding or diverting the flow of water in a watercourse (applicable for water crossings and/ or infrastructure within 500m to the regulated wetland area); and
- **Section 21 i:** Altering the bed, banks, course or characteristics of a watercourse (applicable for water crossings and/ or infrastructure within 500m to the regulated wetland area).

Samancor has appointed Royal HaskoningDHV to provide independent Environmental Assessment Practitioner (EAP) services for the proposed project. As part of these environmental studies, all I&APs will be actively involved through a public participation process. An Independent Power Producer (IPP) will be appointed that will design, build, operate and maintain the PV plant.

PUBLIC PARTICIPATION PROCESS (PPP)

It is important that relevant I&APs are identified and involved in the PPP from the outset of the project. To ensure effective public participation, the process includes the following key steps:



HOW CAN YOU GET INVOLVED?

If you consider yourself an I&AP for this proposed project, we urge you to become involved.

- By responding (by phone or e-mail) to our invitation for your involvement in the process;
- By completing the attached comment form and mailing it to Seshni Govender at Royal HaskoningDHV;
- In writing, contacting the EAP if you have a query, comment or require further project information; and
- By reviewing and commenting on the consultation Scoping and Environmental Impact Reports within the allowed 30-day review period and the WUA Application within the allowed 60-day review period.

Your input into this process forms a key part of the environmental study and we would like to hear from you to obtain your views on the proposed project.

By completing and submitting the accompanying response form, you automatically register yourself as an I&AP for this project, and ensure that your comments, concerns and/ or queries raised regarding the project will be noted.

COMMENTS AND QUERIES ON THE PROJECT CAN BE DIRECTED TO:



Seshni Govender

Royal HaskoningDHV

PO Box 867, Gallo Manor, 2052

Tel: 087 352 1592

Email: Seshni.govender@rhdhv.com



YOUR COMMENTS & QUERIES ARE WELCOME

Please complete this comment form in full before 25 June 2021 and return to:



Seshni Govender

Royal HaskoningDHV

PO Box 867, Gallo Manor, 2052

Tel: 087 352 1592

Email: Seshni.govender@rhdhv.com



**ENVIRONMENTAL IMPACT ASSESSMENT AND WATER USE
AUTHORISATION PROCESS FOR THE 60MWp PHOTOVOLTAIC PLANT
ASSOCIATED WITH THE TUBATSE FERROCHROME SMELTER,
STEELPOORT, FETAKGOMO TUBATSE LOCAL MUNICIPALITY**

(JUNE 2021)

DDFE REF: TBC

DHSW&S REF: TBC

Title (Prof/Mr/Mrs)	First name
Surname	
Capacity (e.g. Secretary / Director)	
Organisation	
Postal address	Postal code
Tel No. ()	Cell No.
Fax No. ()	Email

What comments / concerns would you like to raise regarding this proposed project?
(Please use additional pages, if required)

PLEASE REGISTER THE FOLLOWING PERSON(S) ON THE PROJECT DATABASE:

Title (Prof/Mr/Mrs)	First name
Surname	
Capacity (e.g. Secretary / Director)	
Organisation	
Postal address	Postal code
Tel No. ()	Cell No.
Fax No. ()	Email
Signature	

If you prefer not to receive any further information regarding this proposed project, and, would prefer to be removed from the project database, please tick the box below and return the form to the public participation consultants (contact details as provided above).



Project related



Appendix E: Proof of Advert

NOTICE OF APPLICATION FOR ENVIRONMENTAL AUTHORISATION ENVIRONMENTAL IMPACT ASSESSMENT (EIA) FOR THE 60MWP PHOTOVOLTAIC PLANT ASSOCIATED WITH THE TUBATSE FERROCHROME SMELTER, STEELPOORT, FETAKGOMO TUBATSE LOCAL MUNICIPALITY

DFFE REF Number: To Be Confirmed
DHSW&S REF Number: To Be Confirmed

Notice is hereby given in terms of the EIA Regulations, 2014 (as amended in 2017) published in Government Notice Regulation (GNR) 324 - GNR 327, in terms of Section 24(5) of the National Environmental Management Act - NEMA (Act No. 107 of 1998) (as amended) and the National Water Act - NWA (Act No. 36 of 1998) (as amended) of the initiative by Samancor Chrome Ltd, to apply for an environmental authorisation for a 60MWp Photovoltaic (PV) Plant associated with the Tubatse Ferrochrome Smelter in the Fetakgomo Tubatse Local Municipality, Limpopo Province.

With respect of the above, the Applicant, Samancor Chrome intends undertaking an EIA process as contemplated in the EIA Regulations, 2014 (as amended in 2017) to apply for authorisation for the above proposed development to the Competent Authority, the Department of Forestry, Fisheries and the Environment (DFFE) as well as applying for a Water Use Authorisation (WUA) from the Competent Authority, the Department of Human Settlements, Water and Sanitation (DHSW&S) as contemplated in Chapter 4 of the NWA.

The rising electricity tariffs in South Africa, combined with the increasingly severe load shedding patterns experienced across the country, has a negative impact on the production and revenue of the Samancor Chrome business. This has motivated Samancor Chrome to consider renewable energy generation at their smelter plants. Implementing solar PV generation will result in improved availability of supply and reduced utility bills. A PV plant converts the solar radiation into electric energy by using photovoltaic solar arrays. The nameplate rating of the plant will be a minimum of 60MWp, which will be distributed over five (5) potential sites surrounding the Tubatse Ferrochrome Smelter operations.

The following Listed Activities are being applied for as per the EIA Regulations 2014 (as amended in 2017) for the project:

- Listing Notice 1 - GNR 327 of April 2017: Activities 9,11,12,19, 24, 28, 56;
- Listing Notice 2 - GNR 325 of April 2017: Activities 1,4,15; and
- Listing Notice 3 - GNR 324 of April 2017: Activity 10 (e) (i).

PUBLIC PARTICIPATION PROCESS

The public participation process aims to provide Interested and Affected Parties (I&APs) with information regarding the proposed project and will provide an opportunity to raise any issues or concerns.

As part of the public participation process, you are invited to review the draft Environmental Scoping Report (ESR) and raise comments on the document. The report will be available for review at the following public places and website(s):

- Steelpoort Public Library;
- Fetakgomo Tubatse Municipal Office;
- Tubatse Ferrochrome Smelter Office; and
- Royal HaskoningDHV website:
<https://www.royalhaskoningdhv.com/en/south-africa/projects/environmental-reports>

The draft ESR will be available for review and comments between the following dates:

- NEMA EIA Regulations (30 days): **25 June 2021 – 26 July 2021.**

WHO SHOULD YOU CONTACT?

The Environmental Management and Planning Team at Royal HaskoningDHV, as independent environmental assessment practitioners, have been appointed to conduct the environmental studies.

I&APs are invited to register by submitting their name, contact information and interest in the project to the environmental consultants. Comments on the draft ESR can also be sent to the environmental consultants. Contact details are provided below.

Seshni Govender
Royal HaskoningDHV
PO Box 867, Gallo Manor, 2052, Gauteng
Tel | 087 352 1592
E-mail | seshni.govender@rhdhv.com



**Royal
HaskoningDHV**
Enhancing Society Together