



APPENDIX A: SITE PLAN(S)

"Innovation for Sustainable Development"

[†] Floor Room 274 • Beacon Hill • Hockley Close • Kind William's Town • 5600 | Private Bag X0054 • 5605 • Republic of South Africa
Tel; 043 605 7099 • Fax: 043 605 7300 | Email: • Web: www.dedeat.gov.za










VERSION 1 dated 8 December 2014

**NELSON MANDELA BAY
MUNICIPALITY**

PROPOSED COEGA KOP WELLFIELD

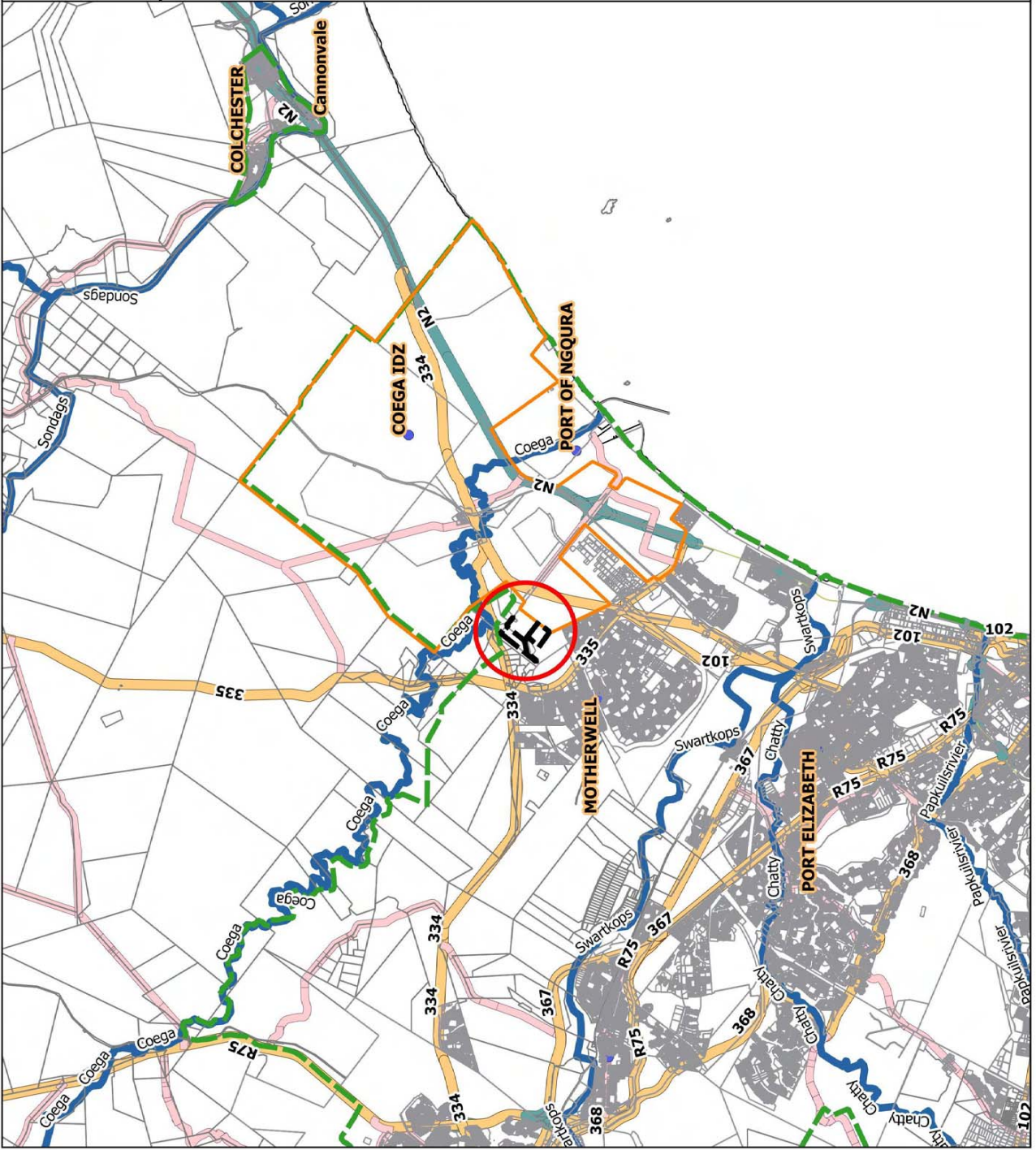
LOCALITY

Legend

-  Cadastral
-  Study Area
-  IDZ_Boundary
-  Urban Edge Approved 2015
-  NEFFPA_Rivers_NMBA
-  NMBM Roads 1_50000
-  MAIN ROAD
-  NATIONAL ROUTE
-  SECONDARY ROAD



0500000 m



**PROPOSED COEGA KOP
WELLFIELD, NELSON MANDELA
BAY MUNICIPALITY, EASTERN CAPE**

**LAYOUT - ALTERNATIVE 1
(PREFERRED)**

Legend

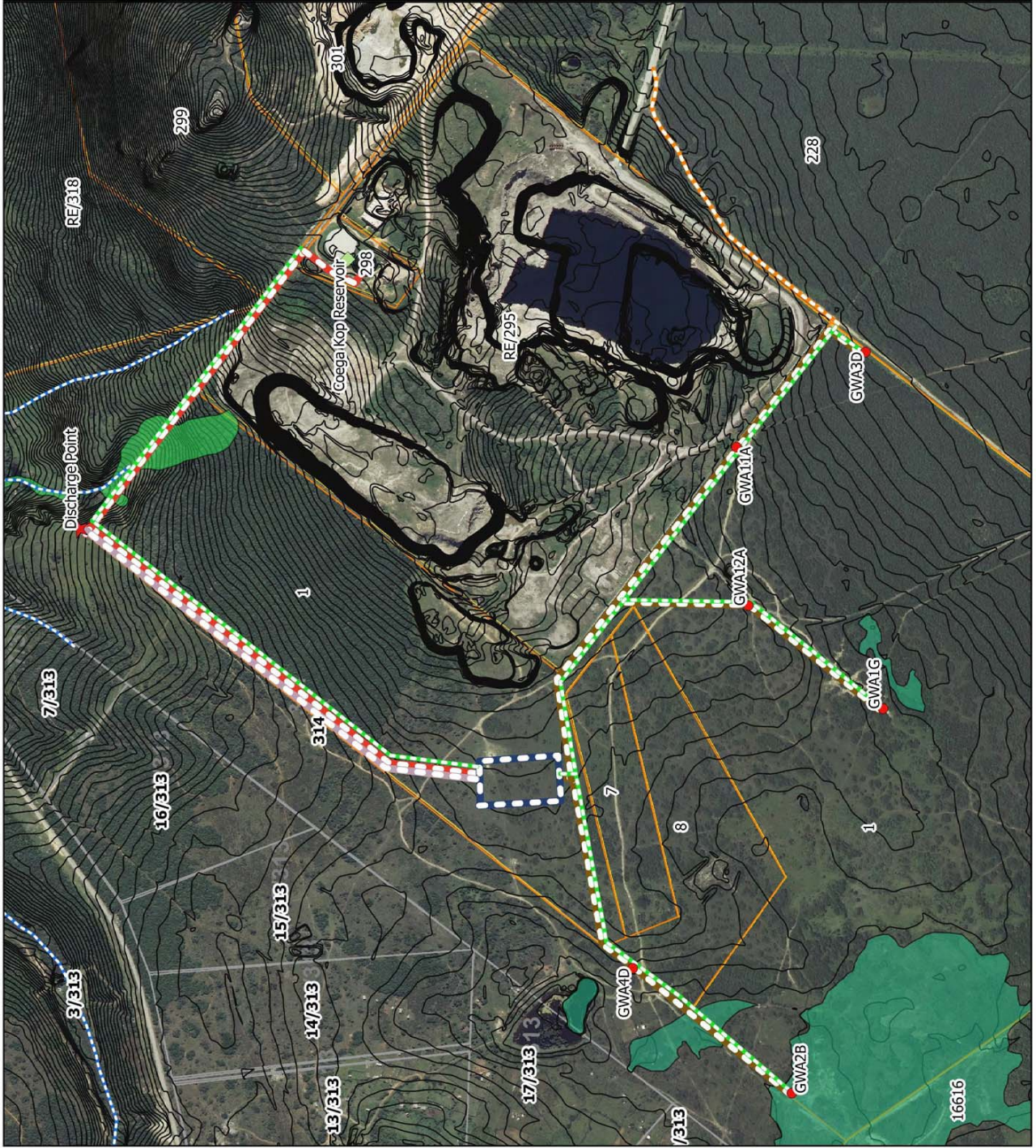
- Farm Portion
- Erf
- Non_Perennial_Rivers_Streams
- Wetlands_Delineated
- Riparian_Zone
- 1m Contours

CoegaKop Wellfield Points

- Borehole
- Discharge Point
- Coega Kop Reservoir

CoegaKop Wellfield Infrastructure

- Borehole Pipeline
- WTW & Associated Infrastructure Area
- WTW Reservoir Pipeline
- Discharge Pipeline
- Access / Service Road
- Existing Access Road

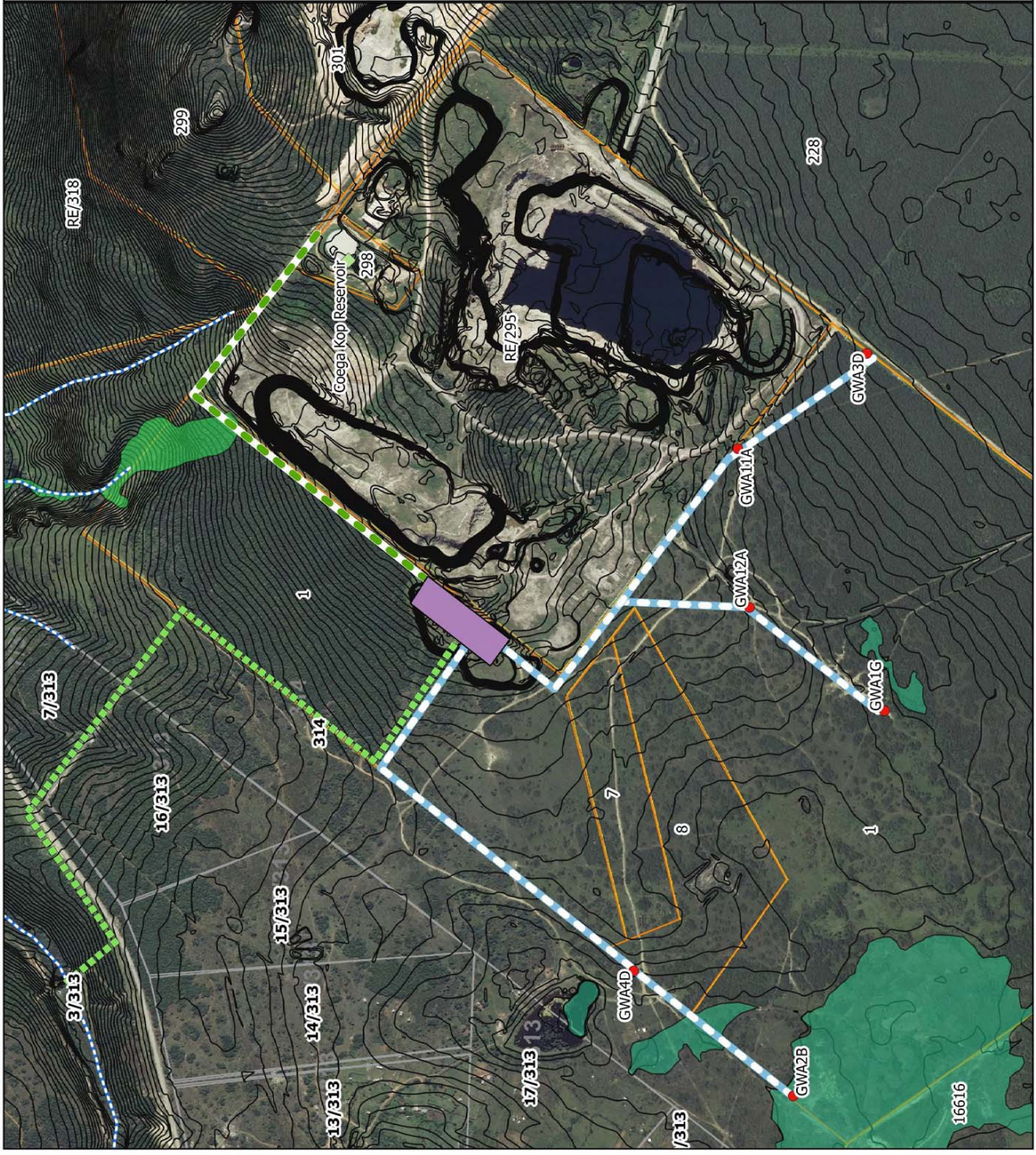


**PROPOSED COEGA KOP
WELLFIELD, NELSON MANDELA
BAY MUNICIPALITY, EASTERN CAPE**

LAYOUT - ALTERNATIVE 2

Legend

- Farm Portion
 - Erf
 - Non_Perennial_Rivers_Streams
 - Wetlands_Delineated
 - Riparian_Zone
 - 1m Contours
- CoegaKop Wellfield Points**
- Borehole
 - Coega Kop Reservoir
 - Proposed CoegaKop WTW Alternative 2
- CoegaKop Wellfield Pipelines**
- Borehole Line
 - Potable Water Line
 - Discharge Pipeline



**PROPOSED COEGA KOP
WELLFIELD, NELSON MANDELA
BAY MUNICIPALITY, EASTERN CAPE**

LAND USE

Legend

- Farm Portion
- Erf
- Existing_Bulk_Water_Pipelines
- Buildings
- IDZ_Boundary
- Cemeteries
- NGA Boreholes

CoegaKop Borehole Points

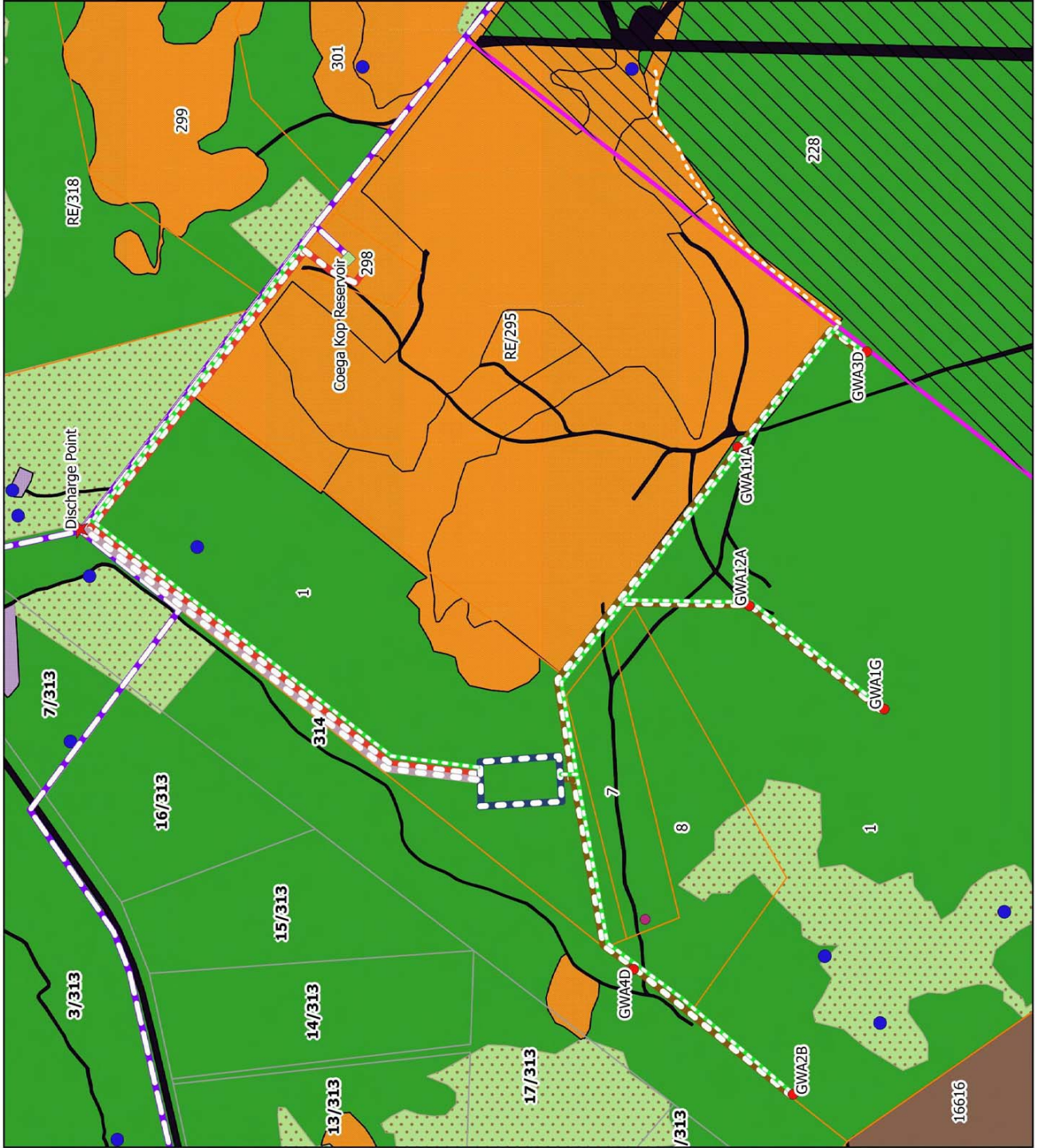
- Borehole
- Discharge Point
- Coega Kop Reservoir

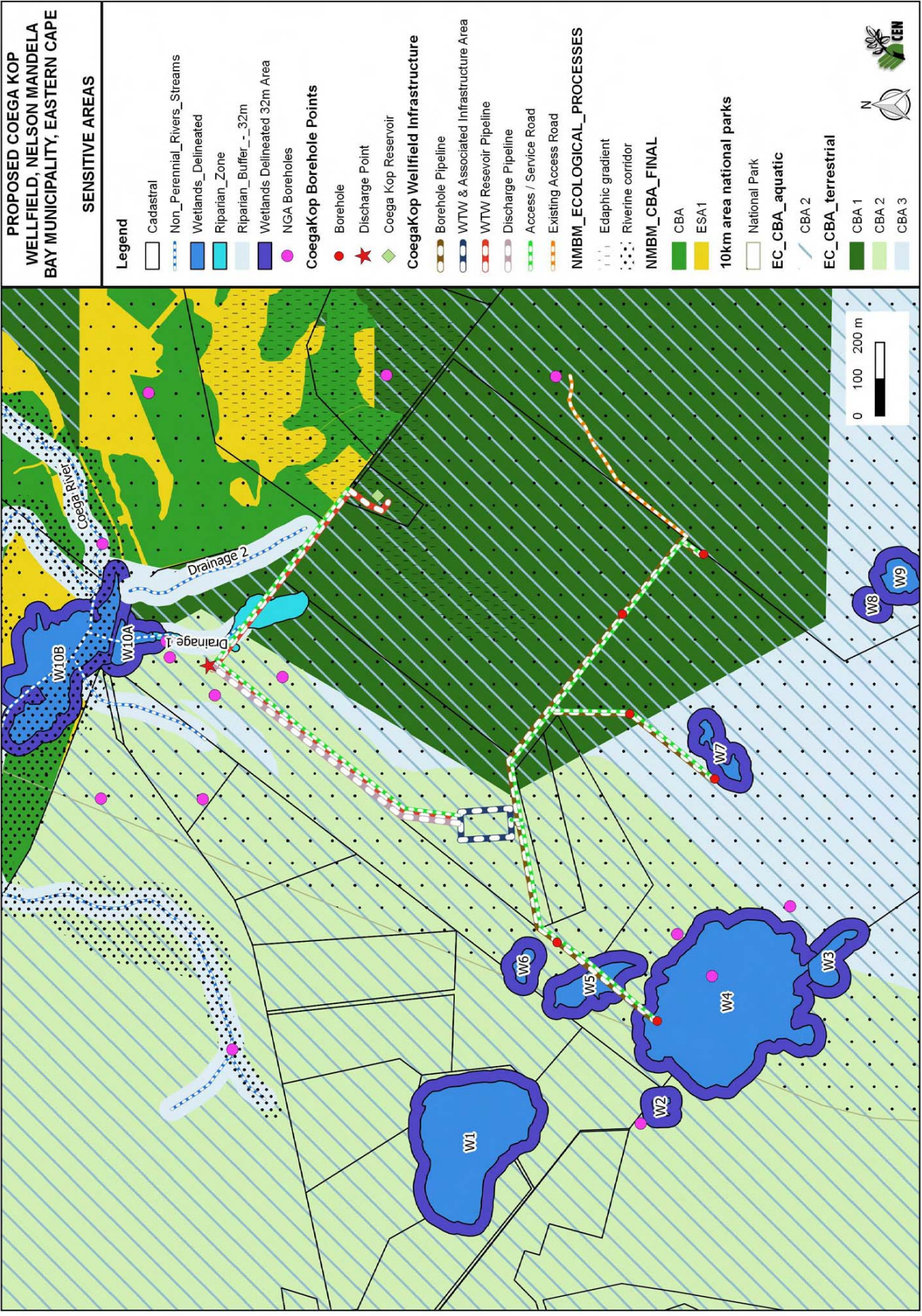
CoegaKop Wellfield Infrastructure

- Borehole Pipeline
- WTW & Associated Infrastructure Area
- WTW Reservoir Pipeline
- Discharge Pipeline
- Access / Service Road
- Existing Access Road

367380_NMBM_LANDCOVER_051007

- Agric (cult)
- Natural Area
- Mine
- Roads
- Urban formal





**PROPOSED COEGA KOP
WELLFIELD, NELSON MANDELA
BAY MUNICIPALITY, EASTERN CAPE**

SENSITIVITY MAP

- Legend**
- Cadastral
 - Non_Perennial_Rivers_Streams
 - Wetlands_Delineated
 - Riparian_Zone
 - Riparian_Buffer_-_32m
 - Wetland_Buffer_-_50m
 - CoegaKop Intact Thicket
- CoegaKop Borehole Points**
- Borehole
 - Discharge Point
 - Coega Kop Reservoir
- CoegaKop Wellfield Infrastructure**
- Borehole Pipeline
 - WTW & Associated Infrastructure Area
 - WTW Reservoir Pipeline
 - Discharge Pipeline
 - Access / Service Road
 - Existing Access Road

