

Appendix 2: Screening Tool Report

**SCREENING REPORT FOR AN ENVIRONMENTAL AUTHORIZATION AS
REQUIRED BY THE 2014 EIA REGULATIONS – PROPOSED SITE
ENVIRONMENTAL SENSITIVITY**

EIA Reference number: 2022-08-0023

Project name: Gamma 400 KV Gridline Project

Project title: Gamma 400 KV Gridline Project

Date screening report generated: 16/10/2022 06:47:17

Applicant: Red Cap Nuweveld North (Pty) Ltd

Compiler: CEN IEM Unit

Compiler signature:



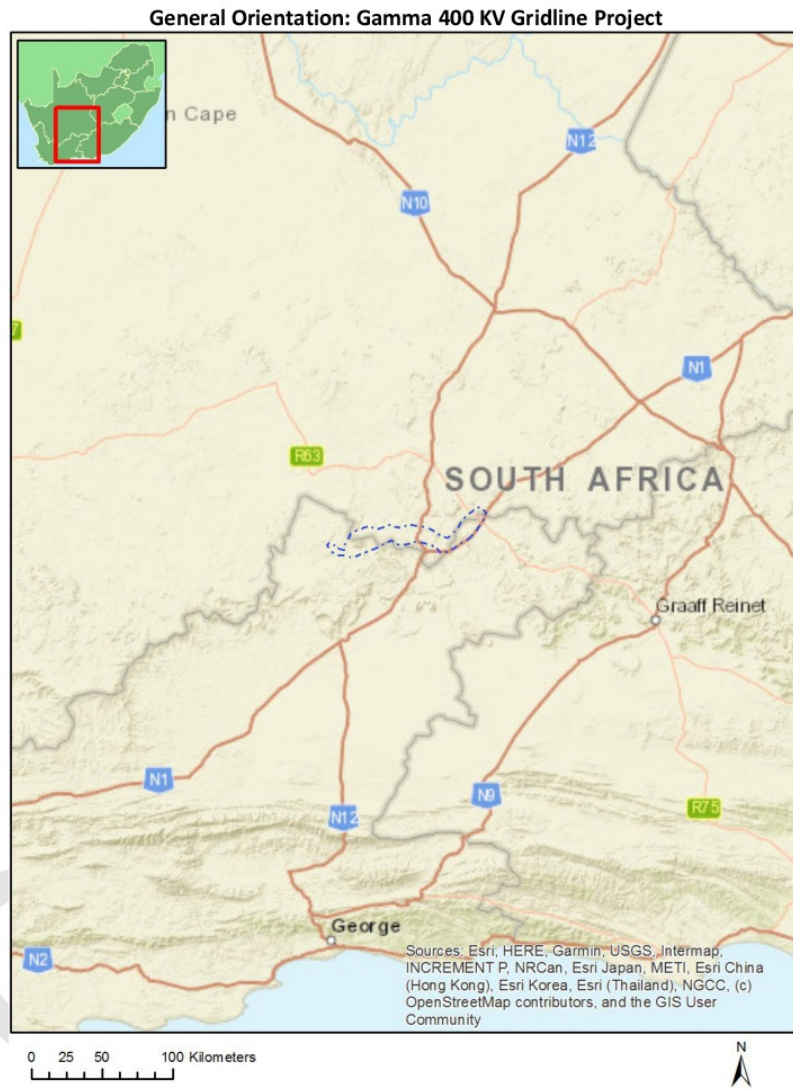
Application Category: Utilities Infrastructure|Electricity|Distribution and Transmission|Powerline

Table of Contents

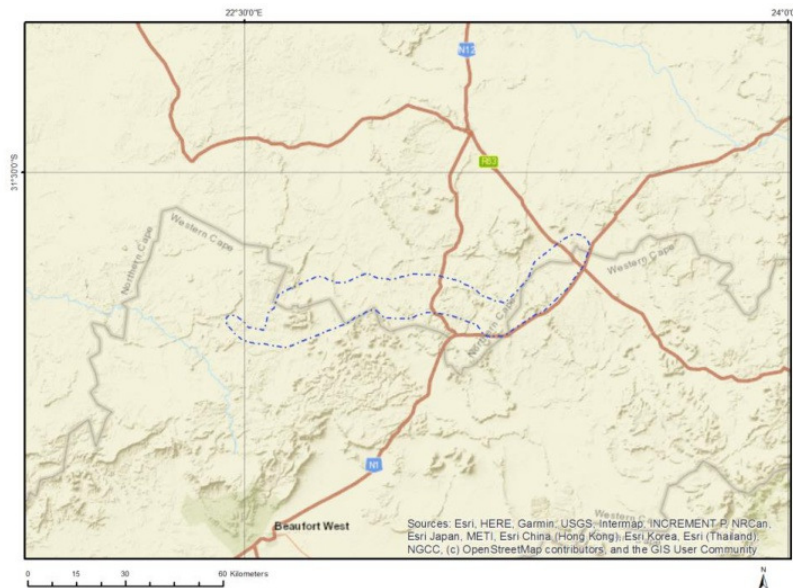
Proposed Project Location	3
Orientation map 1: General location	3
Map of proposed site and relevant area(s)	4
Cadastral details of the proposed site	4
Wind and Solar developments with an approved Environmental Authorisation or applications under consideration within 30 km of the proposed area	7
Environmental Management Frameworks relevant to the application	7
Environmental screening results and assessment outcomes	7
Relevant development incentives, restrictions, exclusions or prohibitions	7
Map indicating proposed development footprint within applicable development incentive, restriction, exclusion or prohibition zones.....	8
Proposed Development Area Environmental Sensitivity.....	8
Specialist assessments identified.....	9
Results of the environmental sensitivity of the proposed area	11
MAP OF RELATIVE AGRICULTURE THEME SENSITIVITY	11
MAP OF RELATIVE ANIMAL SPECIES THEME SENSITIVITY.....	12
MAP OF RELATIVE AQUATIC BIODIVERSITY THEME SENSITIVITY	13
MAP OF RELATIVE ARCHAEOLOGICAL AND CULTURAL HERITAGE THEME SENSITIVITY	14
MAP OF RELATIVE CIVIL AVIATION THEME SENSITIVITY	15
MAP OF RELATIVE DEFENCE THEME SENSITIVITY.....	16
MAP OF RELATIVE PALEONTOLOGY THEME SENSITIVITY	17
MAP OF RELATIVE PLANT SPECIES THEME SENSITIVITY	18
MAP OF RELATIVE TERRESTRIAL BIODIVERSITY THEME SENSITIVITY	19

Proposed Project Location

Orientation map 1: General location



Map of proposed site and relevant area(s)



Cadastral details of the proposed site

Property details:

No	Farm Name	Farm/ Erf No	Portion	Latitude	Longitude	Property Type
1	WAAYFONTEIN	65	0	31°59'2.75S	23°12'8.84E	Farm
2	VLAK FONTEIN	207	0	31°45'56S	22°46'25.65E	Farm
3	MODDERFONTEIN	228	0	31°45'45.75S	23°14'20.48E	Farm
4		395	0	31°55'10.25S	22°39'38.46E	Farm
5	GABRIELS BAKEN	2	0	31°44'25.54S	23°21'18.76E	Farm
6	SCHIEKUIL	3	0	31°43'58.76S	23°26'43.19E	Farm
7	KLEINFONTEIN	93	0	31°40'7.03S	23°28'35.98E	Farm
8	WOLVE KRAAL	176	0	31°47'15.01S	23°22'30.76E	Farm
9	ZWARTKOPJES	240	0	31°51'47.19S	23°12'21.21E	Farm
10	PHAISANT KRAAL	1	0	31°46'44.55S	23°17'45.74E	Farm
11	WATERVAL	237	0	31°49'39.33S	23°4'49.96E	Farm
12	GROOTKLIP	238	0	31°52'14.21S	23°8'17.01E	Farm
13	WILLEMS KRAAL	76	0	31°56'4.95S	22°35'33.77E	Farm
14	RIETKLOOF PLAATEN	239	0	31°50'43.63S	23°10'46.5E	Farm
15	STERKFONTEIN	249	0	31°44'13.91S	22°58'25.91E	Farm
16		59	0	31°50'59.56S	22°45'52.38E	Farm
17	BRAKFONTEIN	225	0	31°49'12.18S	23°0'14.52E	Farm
18		396	0	31°52'44.87S	22°38'48.62E	Farm
19		241	0	31°53'57.97S	23°10'57.99E	Farm
20	ANNEX NOBELS FONTEIN	234	0	31°48'45.25S	23°10'43.51E	Farm
21	UIT VLUGT FONTEIN	265	0	31°40'42.26S	23°22'17.76E	Farm
22	BURGERSFONTEIN	92	0	31°37'7.11S	23°26'14.06E	Farm
23	TAAYBOSCHFONTEIN	15	0	31°51'31.28S	23°15'59.35E	Farm
24	MORDANT KLAASSENSKRAAL	14	0	31°50'16.39S	23°21'30.15E	Farm
25	DUIKER KRANSE	45	0	31°52'7.19S	22°31'34.72E	Farm

26	SNEEUW KRAAL	46	0	31°51'28.35S	22°35'27.43E	Farm
27	ADJ SNEEUW KRAAL	47	0	31°51'48.76S	22°36'38.87E	Farm
28	PAARDEBERG	49	0	31°50'3.79S	22°38'37.22E	Farm
29	ADJ. PAARDEBERG	50	0	31°50'19.08S	22°41'12.63E	Farm
30	DOORN KLOOF	224	0	31°50'12.54S	22°54'35.33E	Farm
31	KOOK FONTEIN	226	0	31°45'27.63S	23°4'14.71E	Farm
32	CAFFAR KRAAL	232	0	31°41'30.92S	23°18'4.31E	Farm
33	EZELSFONTEIN	235	0	31°49'21.21S	23°7'37.07E	Farm
34		242	0	31°53'40.99S	23°9'59.31E	Farm
35		43	0	31°52'16.6S	22°26'14.66E	Farm
36	ADJ DRIEKOP	48	0	31°54'9.98S	22°37'5.73E	Farm
37	DRIE KOP	53	0	31°52'44.93S	22°41'26.98E	Farm
38	ABRAMS KRAAL	206	0	31°46'39.5S	22°39'2.37E	Farm
39	DRUP FONTEIN	208	0	31°43'36.59S	22°51'35.08E	Farm
40	NOBELSFONTEIN	248	0	31°45'23.63S	23°10'5.96E	Farm
41	BULTFONTEIN	387	0	31°48'23.91S	22°31'9.77E	Farm
42	PHAISANT KRAAL	1	0	31°46'44.55S	23°17'45.74E	Farm Portion
43	DUIKER KRANSE	45	0	31°53'4.99S	22°34'35.98E	Farm Portion
44	PAARDEBERG	49	1	31°49'23.49S	22°39'47.13E	Farm Portion
45	DRIE KOP	53	1	31°52'44.93S	22°41'26.98E	Farm Portion
46		59	0	31°50'23.66S	22°49'48.02E	Farm Portion
47		59	4	31°50'8.24S	22°43'37.33E	Farm Portion
48	DUIKER KRANSE	45	4	31°51'55.65S	22°29'44.79E	Farm Portion
49	KOOK FONTEIN	226	2	31°44'30.89S	23°2'37.9E	Farm Portion
50	WATERVAL	237	0	31°49'38.95S	23°4'51.85E	Farm Portion
51	RIETKLOOF PLAATEN	239	0	31°51'4.43S	23°10'44.38E	Farm Portion
52		242	0	31°53'8.34S	23°10'39.62E	Farm Portion
53		395	0	31°55'10.2S	22°39'38.46E	Farm Portion
54	ABRAMS KRAAL	206	0	31°47'12.39S	22°38'58.08E	Farm Portion
55	VLAK FONTEIN	207	3	31°46'17.85S	22°43'54.8E	Farm Portion
56	DRUP FONTEIN	208	1	31°46'15.06S	22°53'54.05E	Farm Portion
57	BRAKFONTEIN	225	0	31°48'45.12S	22°57'55.26E	Farm Portion
58	BRAKFONTEIN	225	1	31°49'17.31S	22°59'52.63E	Farm Portion
59	ADJ DRIEKOP	48	0	31°53'45.24S	22°36'41.12E	Farm Portion
60		59	2	31°52'8.1S	22°45'43.86E	Farm Portion
61	WILLEMS KRAAL	76	0	31°55'15.31S	22°35'56.25E	Farm Portion
62	WOLVE KRAAL	176	0	31°47'0.77S	23°21'36.93E	Farm Portion
63	DRUP FONTEIN	208	0	31°42'29.47S	22°51'2.91E	Farm Portion
64	BRAKFONTEIN	225	2	31°50'51.32S	23°2'58.11E	Farm Portion
65	SCHIEKUIL	3	0	31°42'49.02S	23°25'19.57E	Farm Portion
66	SNEEUW KRAAL	46	0	31°51'28.35S	22°35'27.43E	Farm Portion
67	ABRAMS KRAAL	206	1	31°44'37.16S	22°39'18.33E	Farm Portion
68	DRUP FONTEIN	208	2	31°45'45.68S	22°51'6.1E	Farm Portion
69	DOORN KLOOF	224	0	31°50'12.54S	22°54'35.33E	Farm Portion
70	BRAKFONTEIN	225	3	31°47'57.13S	23°1'12.08E	Farm Portion
71	ADJ DRIEKOP	48	2	31°54'35.6S	22°37'31.2E	Farm Portion
72	PAARDEBERG	49	0	31°50'41.39S	22°38'28.04E	Farm Portion
73	ADJ. PAARDEBERG	50	0	31°50'12.68S	22°41'38.03E	Farm Portion
74	WOLVE KRAAL	176	0	31°46'55.77S	23°22'27.25E	Farm Portion
75	KOOK FONTEIN	226	0	31°45'29S	23°4'18.23E	Farm Portion
76	MODDERFONTEIN	228	4	31°47'45.8S	23°12'49.35E	Farm Portion
77	ANNEX NOBELS FONTEIN	234	1	31°48'33.72S	23°10'44.22E	Farm Portion
78	ZWARTKOPJES	240	1	31°50'39.1S	23°12'28.77E	Farm Portion
79	NOBELSFONTEIN	248	3	31°45'31.09S	23°11'34.5E	Farm Portion
80	GABRIELS BAKEN	2	0	31°44'25.54S	23°21'18.76E	Farm Portion
81	SCHIEKUIL	3	1	31°41'47.74S	23°24'24.79E	Farm Portion
82	MORDANT KLAASSENSKRAAL	14	11	31°49'1.76S	23°19'32.46E	Farm Portion
83	MORDANT	14	11	31°48'58.33S	23°20'34.63E	Farm Portion

	KLAASSENSKRAAL					
84	PAARDEBERG	49	2	31°50'8.98S	22°37'25.37E	Farm Portion
85	VLAK FONTEIN	207	4	31°45'16.62S	22°46'55.07E	Farm Portion
86	KOOK FONTEIN	226	0	31°45'27.65S	23°1'27.71E	Farm Portion
87	MODDERFONTEIN	228	3	31°48'54.1S	23°14'15.6E	Farm Portion
88	MODDERFONTEIN	228	0	31°43'58.44S	23°14'50.82E	Farm Portion
89	ZWARTKOPJES	240	2	31°50'10.54S	23°11'41.15E	Farm Portion
90	NOBELSFONTEIN	248	0	31°45'19.77S	23°9'35.11E	Farm Portion
91	NOBELSFONTEIN	248	4	31°43'3.45S	23°11'0.52E	Farm Portion
92	SCHIEKUIL	3	0	31°42'58.81S	23°25'19.02E	Farm Portion
93	DUIKER KRANSE	45	3	31°52'3.63S	22°32'36.79E	Farm Portion
94	ADJ SNEEUW KRAAL	47	0	31°51'48.76S	22°36'38.87E	Farm Portion
95	PAARDEBERG	49	3	31°51'44.52S	22°36'49.03E	Farm Portion
96	VLAK FONTEIN	207	1	31°48'45.49S	22°48'38.75E	Farm Portion
97	MODDERFONTEIN	228	1	31°50'57.8S	23°13'27.47E	Farm Portion
98		241	0	31°53'7.81S	23°11'10.98E	Farm Portion
99		242	1	31°53'10.01S	23°10'35.85E	Farm Portion
100	ANNEX NOBELS FONTEIN	234	0	31°49'5.79S	23°10'42.23E	Farm Portion
101	RIETKLOOF PLAATEN	239	1	31°49'44.94S	23°10'52.49E	Farm Portion
102		396	0	31°52'44.87S	22°38'48.62E	Farm Portion
103	UIT VLUGT FONTEIN	265	0	31°41'20.29S	23°21'42.91E	Farm Portion
104	GROOTKLIP	238	1	31°51'22.72S	23°7'42.81E	Farm Portion
105	EZELSFONTEIN	235	3	31°48'55.61S	23°8'27.31E	Farm Portion
106	EZELSFONTEIN	235	2	31°47'52.27S	23°7'41.84E	Farm Portion
107	GROOTKLIP	238	0	31°52'0.56S	23°9'5.96E	Farm Portion
108	KLEINFONTEIN	93	0	31°39'28.56S	23°27'11.2E	Farm Portion
109	EZELSFONTEIN	235	4	31°49'28.2S	23°9'58.99E	Farm Portion
110	TAAYBOSCHFONTEIN	15	1	31°51'54.71S	23°14'4.82E	Farm Portion
111	EZELSFONTEIN	235	0	31°50'20.26S	23°6'52.25E	Farm Portion
112	BRAKFONTEIN	225	1	31°49'19.79S	23°2'15.63E	Farm Portion
113		241	2	31°53'11.56S	23°11'0.37E	Farm Portion
114		241	0	31°53'47.73S	23°11'1.27E	Farm Portion
115	BULTFONTEIN	387	0	31°48'23.91S	22°31'9.77E	Farm Portion
116	UIT VLUGT FONTEIN	265	2	31°39'14.34S	23°21'55.72E	Farm Portion
117	UIT VLUGT FONTEIN	265	1	31°40'10.88S	23°23'37.61E	Farm Portion
118	EZELSFONTEIN	235	5	31°49'35.8S	23°9'13.02E	Farm Portion
119	STERKFONTEIN	249	0	31°44'12.67S	22°58'32.17E	Farm Portion
120	TAAYBOSCHFONTEIN	15	0	31°50'27.85S	23°15'55.35E	Farm Portion
121	GROOTKLIP	238	0	31°51'40.1S	23°7'10.22E	Farm Portion
122	EZELSFONTEIN	235	2	31°48'37.36S	23°10'5.24E	Farm Portion
123	EZELSFONTEIN	235	1	31°49'19.1S	23°9'24.86E	Farm Portion
124	WAAYFONTEIN	65	3	31°52'54.29S	23°13'38.24E	Farm Portion
125	BURGERSFONTEIN	92	0	31°37'7.11S	23°26'14.06E	Farm Portion
126	ADJ. PAARDEBERG	50	1	31°50'32.33S	22°40'20.03E	Farm Portion
127		59	1	31°48'44.88S	22°41'44.2E	Farm Portion
128	EZELSFONTEIN	235	0	31°50'6.97S	23°9'19.54E	Farm Portion
129		43	0	31°52'16.6S	22°26'14.66E	Farm Portion
130	ZWARTKOPJES	240	0	31°52'5.29S	23°12'30.54E	Farm Portion
131		241	3	31°53'13.11S	23°11'9.89E	Farm Portion
132	CAFFAR KRAAL	232	0	31°41'30.92S	23°18'4.31E	Farm Portion

Development footprint¹ vertices:

¹ "development footprint", means the area within the site on which the development will take place and includes all ancillary developments for example roads, power lines, boundary walls, paving etc. which require vegetation clearance or which will be disturbed and for which the application has been submitted.

No development footprint(s) specified.

Wind and Solar developments with an approved Environmental Authorisation or applications under consideration within 30 km of the proposed area

No	EIA Reference No	Classification	Status of application	Distance from proposed area (km)
1	14/12/16/3/1/2	Solar PV	Approved	0
2	12/12/20/2428	Solar PV	Approved	18.5

Environmental Management Frameworks relevant to the application

No intersections with EMF areas found.

Environmental screening results and assessment outcomes

The following sections contain a summary of any development incentives, restrictions, exclusions or prohibitions that apply to the proposed development site as well as the most environmental sensitive features on the site based on the site sensitivity screening results for the application classification that was selected. The application classification selected for this report is:

Utilities Infrastructure | Electricity | Distribution and Transmission | Powerline.

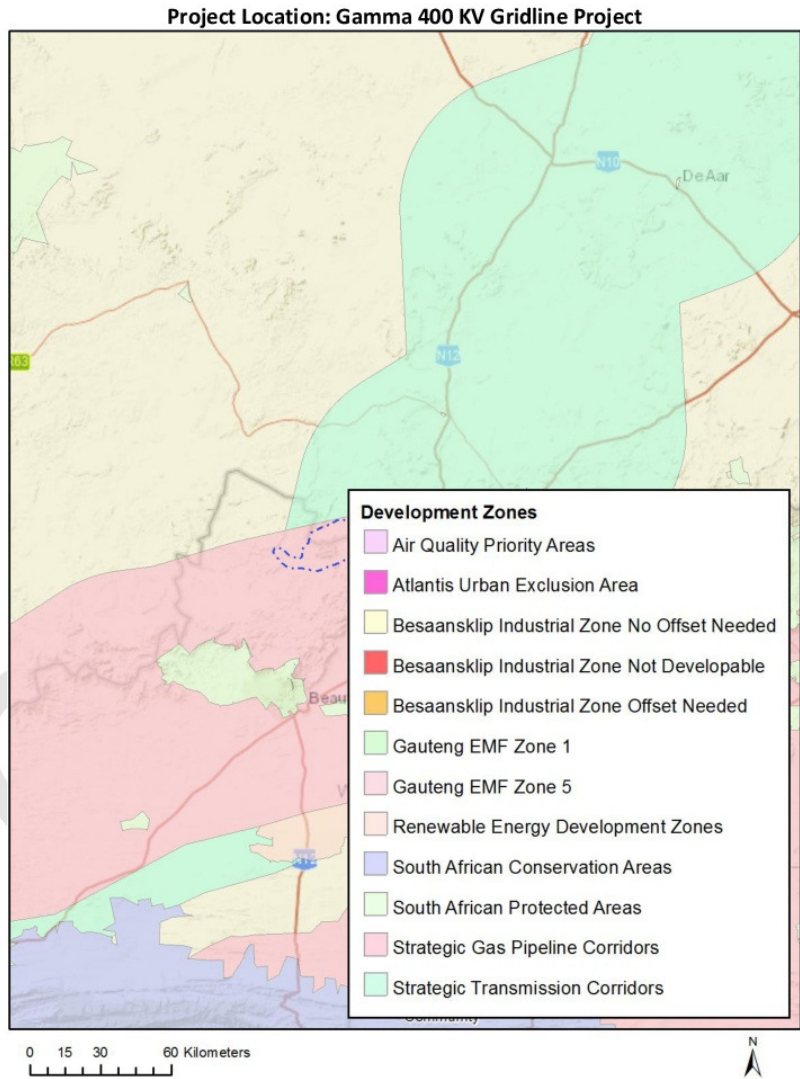
Relevant development incentives, restrictions, exclusions or prohibitions

The following development incentives, restrictions, exclusions or prohibitions and their implications that apply to this site are indicated below.

Incentive, restriction or prohibition	Implication
Strategic Transmission Corridor-Central corridor	https://screening.environment.gov.za/ScreeningDownloads/DevelopmentZones/Combined_EGI.pdf
Renewable energy development zones 11-Beaufort West	https://screening.environment.gov.za/ScreeningDownloads/DevelopmentZones/Combined_REDZ.pdf
Strategic Gas Pipeline	https://screening.environment.gov.za/ScreeningDownloads/DevelopmentZones/Combined_GAS.pdf

Corridors- Phase 9: Inland Corridor from Saldanha to Coega	
--	--

Map indicating proposed development footprint within applicable development incentive, restriction, exclusion or prohibition zones



Proposed Development Area Environmental Sensitivity

The following summary of the development site environmental sensitivities is identified. Only the highest environmental sensitivity is indicated. The footprint environmental sensitivities for the

proposed development footprint as identified, are indicative only and must be verified on site by a suitably qualified person before the specialist assessments identified below can be confirmed.

Theme	Very High sensitivity	High sensitivity	Medium sensitivity	Low sensitivity
Agriculture Theme			X	
Animal Species Theme		X		
Aquatic Biodiversity Theme	X			
Archaeological and Cultural Heritage Theme	X			
Civil Aviation Theme				X
Defence Theme				X
Paleontology Theme	X			
Plant Species Theme			X	
Terrestrial Biodiversity Theme	X			

Specialist assessments identified

Based on the selected classification, and the environmental sensitivities of the proposed development footprint, the following list of specialist assessments have been identified for inclusion in the assessment report. It is the responsibility of the EAP to confirm this list and to motivate in the assessment report, the reason for not including any of the identified specialist study including the provision of photographic evidence of the site situation.

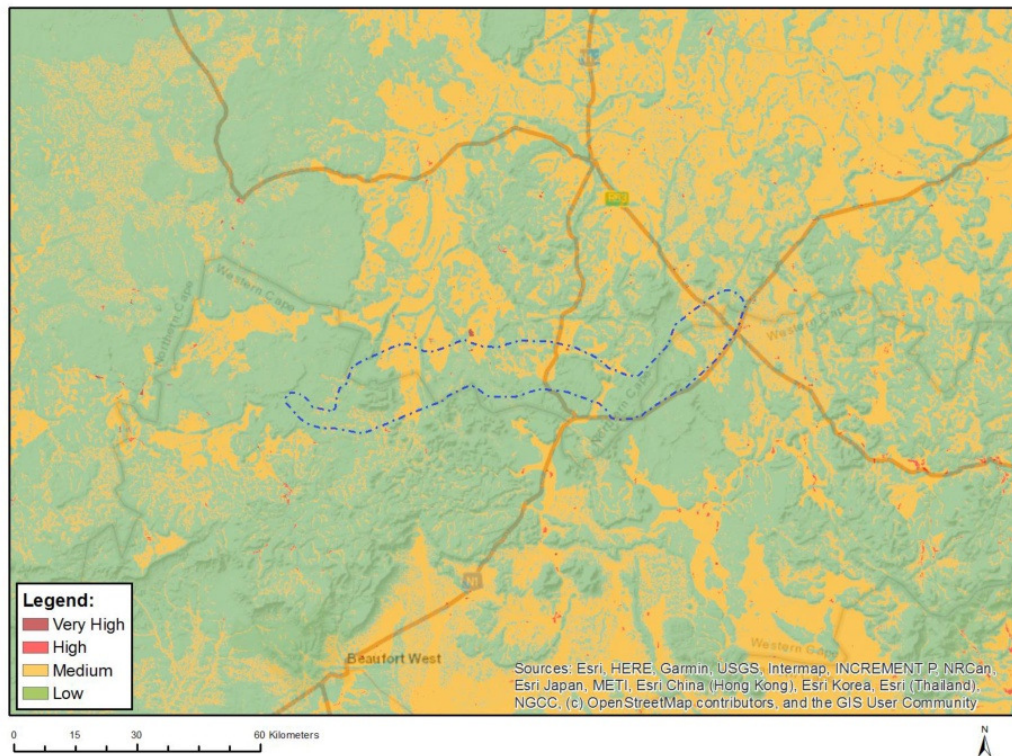
No	Specialist assessment	Assessment Protocol
1	Agricultural Impact Assessment	https://screening.environment.gov.za/ScreeningDownloads/AssessmentProtocols/Gazetted General Agriculture Assessment Protocols.pdf
2	Landscapes/Visual Impact Assessment	https://screening.environment.gov.za/ScreeningDownloads/AssessmentProtocols/Gazetted General Requirement Assessment Protocols.pdf
3	Archaeological and Cultural Heritage Impact Assessment	https://screening.environment.gov.za/ScreeningDownloads/AssessmentProtocols/Gazetted General Requirement Assessment Protocols.pdf
4	Palaeontology Impact Assessment	https://screening.environment.gov.za/ScreeningDownloads/AssessmentProtocols/Gazetted General Requirement Assessment Protocols.pdf
5	Terrestrial Biodiversity	https://screening.environment.gov.za/ScreeningDownloads/AssessmentProtocols/Gazetted Terrestrial Biodiversity Assessment Protocols.pdf

	Impact Assessment	
6	Aquatic Biodiversity Impact Assessment	https://screening.environment.gov.za/ScreeningDownloads/AssessmentProtocols/Gazetted Aquatic Biodiversity Assessment Protocols.pdf
7	Avian Impact Assessment	https://screening.environment.gov.za/ScreeningDownloads/AssessmentProtocols/Gazetted Avifauna Assessment Protocols.pdf
8	Civil Aviation Assessment	https://screening.environment.gov.za/ScreeningDownloads/AssessmentProtocols/Gazetted Civil Aviation Installations Assessment Protocols.pdf
9	RFI Assessment	https://screening.environment.gov.za/ScreeningDownloads/AssessmentProtocols/Gazetted General Requirement Assessment Protocols.pdf
10	Geotechnical Assessment	https://screening.environment.gov.za/ScreeningDownloads/AssessmentProtocols/Gazetted General Requirement Assessment Protocols.pdf
11	Plant Species Assessment	https://screening.environment.gov.za/ScreeningDownloads/AssessmentProtocols/Gazetted Plant Species Assessment Protocols.pdf
12	Animal Species Assessment	https://screening.environment.gov.za/ScreeningDownloads/AssessmentProtocols/Gazetted Animal Species Assessment Protocols.pdf

Results of the environmental sensitivity of the proposed area.

The following section represents the results of the screening for environmental sensitivity of the proposed site for relevant environmental themes associated with the project classification. It is the duty of the EAP to ensure that the environmental themes provided by the screening tool are comprehensive and complete for the project. Refer to the disclaimer.

MAP OF RELATIVE AGRICULTURE THEME SENSITIVITY

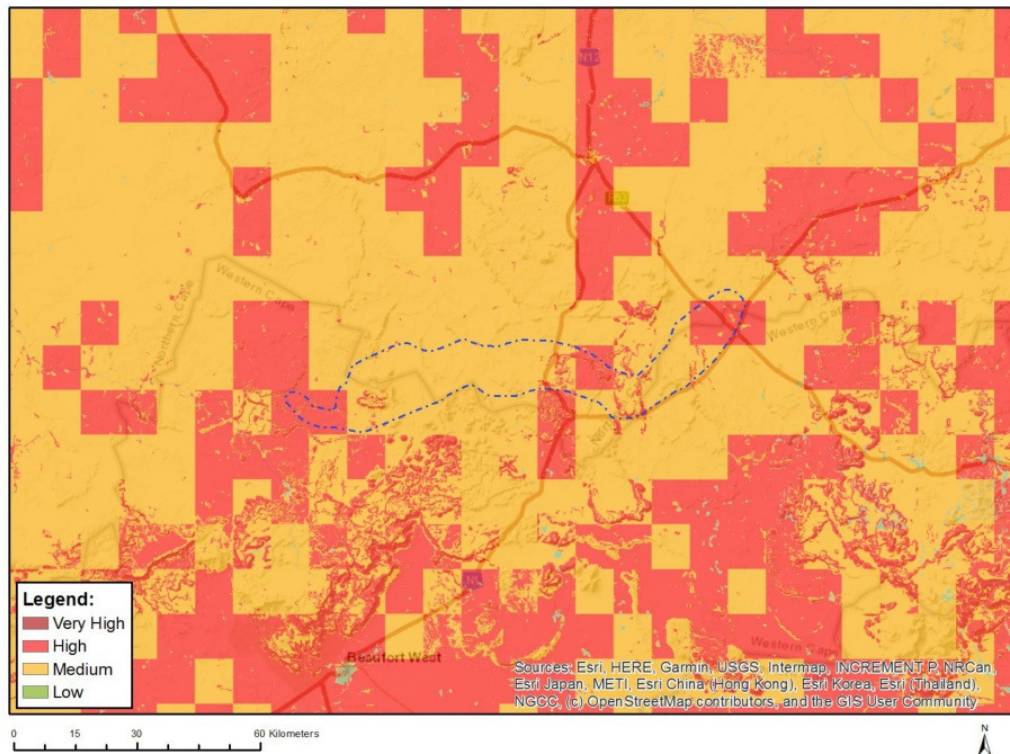


Very High sensitivity	High sensitivity	Medium sensitivity	Low sensitivity
		X	

Sensitivity Features:

Sensitivity	Feature(s)
Low	Land capability;01. Very low/02. Very low/03. Low-Very low/04. Low-Very low/05. Low
Medium	Land capability;06. Low-Moderate/07. Low-Moderate/08. Moderate

MAP OF RELATIVE ANIMAL SPECIES THEME SENSITIVITY



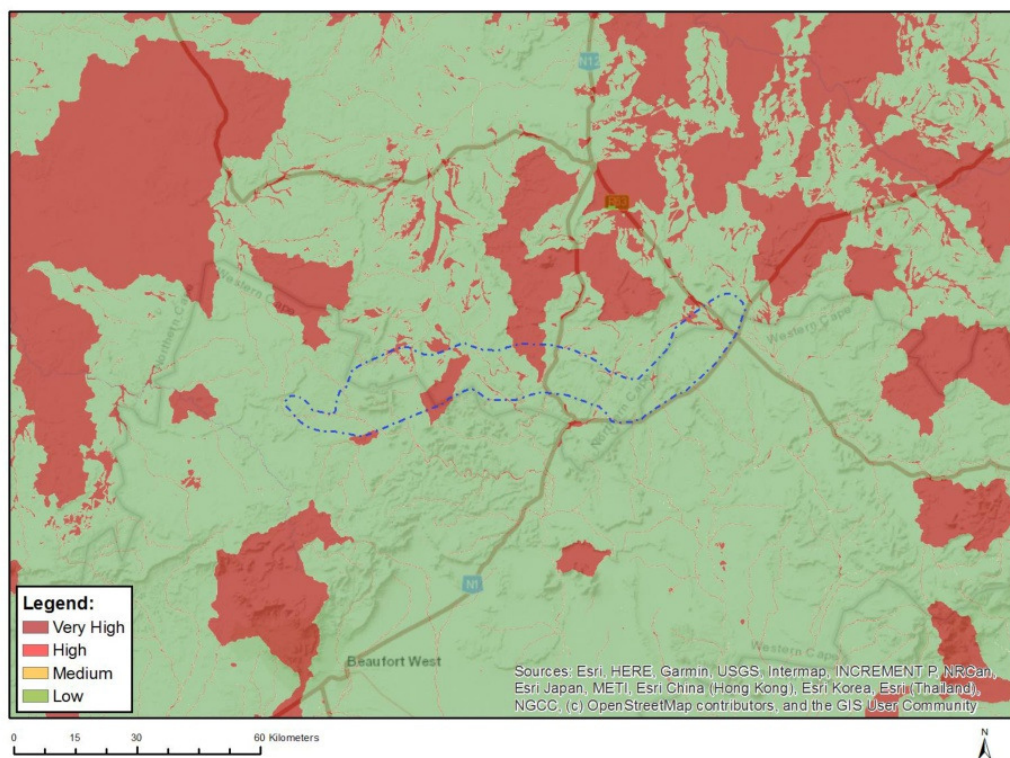
Where only a sensitive plant unique number or sensitive animal unique number is provided in the screening report and an assessment is required, the environmental assessment practitioner (EAP) or specialist is required to email SANBI at eiadatarequests@sanbi.org.za listing all sensitive species with their unique identifiers for which information is required. The name has been withheld as the species may be prone to illegal harvesting and must be protected. SANBI will release the actual species name after the details of the EAP or specialist have been documented.

Very High sensitivity	High sensitivity	Medium sensitivity	Low sensitivity
	X		

Sensitivity Features:

Sensitivity	Feature(s)
High	Aves-Ciconia nigra
High	Aves-Neotis ludwigii
High	Aves-Falco biarmicus
High	Aves-Aquila verreauxii
High	Mammalia-Bunolagus monticularis
Low	Subject to confirmation
Medium	Aves-Hydroprogne caspia
Medium	Aves-Neotis ludwigii
Medium	Aves-Aquila verreauxii
Medium	Aves-Ciconia nigra
Medium	Mammalia-Bunolagus monticularis
Medium	Reptilia-Chersobius boulengeri

MAP OF RELATIVE AQUATIC BIODIVERSITY THEME SENSITIVITY

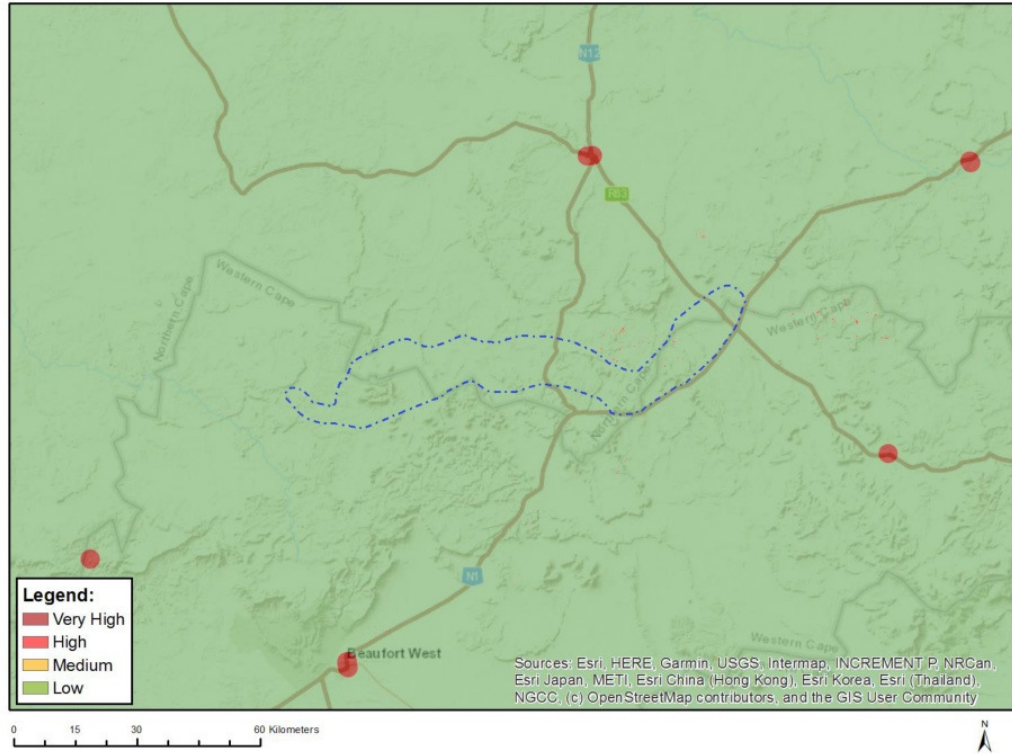


Very High sensitivity	High sensitivity	Medium sensitivity	Low sensitivity
X			

Sensitivity Features:

Sensitivity	Feature(s)
Low	Low sensitivity
Very High	Aquatic CBAs
Very High	Rivers
Very High	Wetlands and Estuaries
Very High	Freshwater ecosystem priority area quinary catchments

MAP OF RELATIVE ARCHAEOLOGICAL AND CULTURAL HERITAGE THEME SENSITIVITY

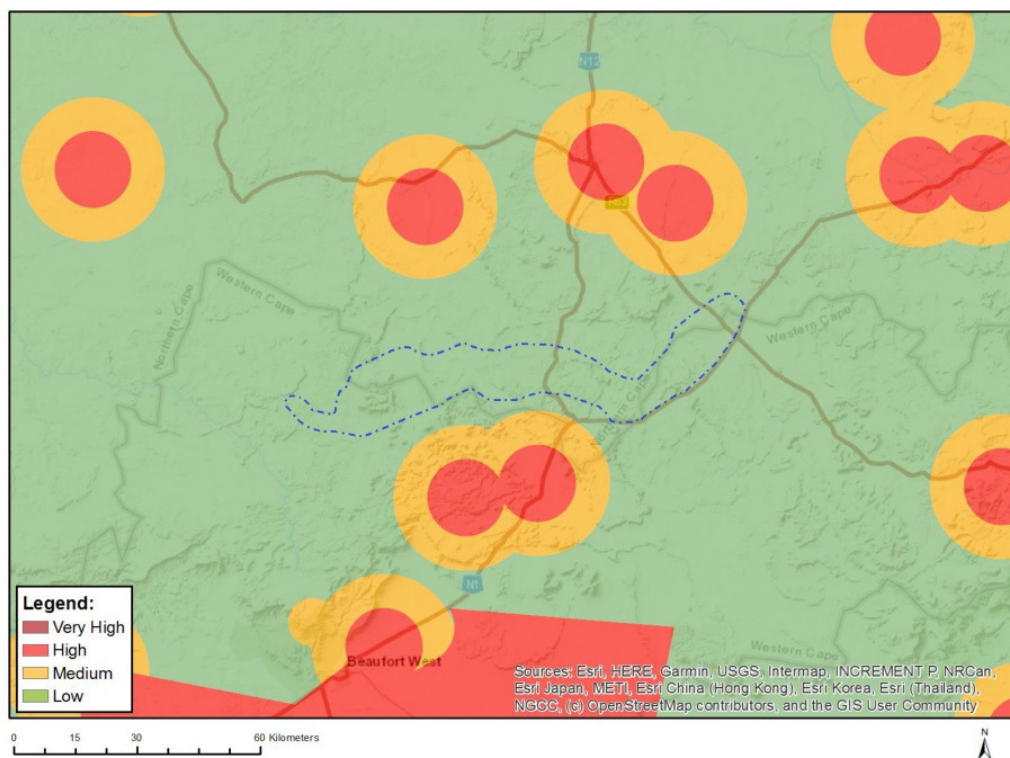


Very High sensitivity	High sensitivity	Medium sensitivity	Low sensitivity
X			

Sensitivity Features:

Sensitivity	Feature(s)
High	Within 150m of a Grade IIIa Heritage site
High	Within 100m of a Grade IIIb Heritage site
High	Within 50m of a Grade IIIc Heritage site
Low	Low sensitivity
Very High	Within 100m of an Ungraded Heritage site

MAP OF RELATIVE CIVIL AVIATION THEME SENSITIVITY

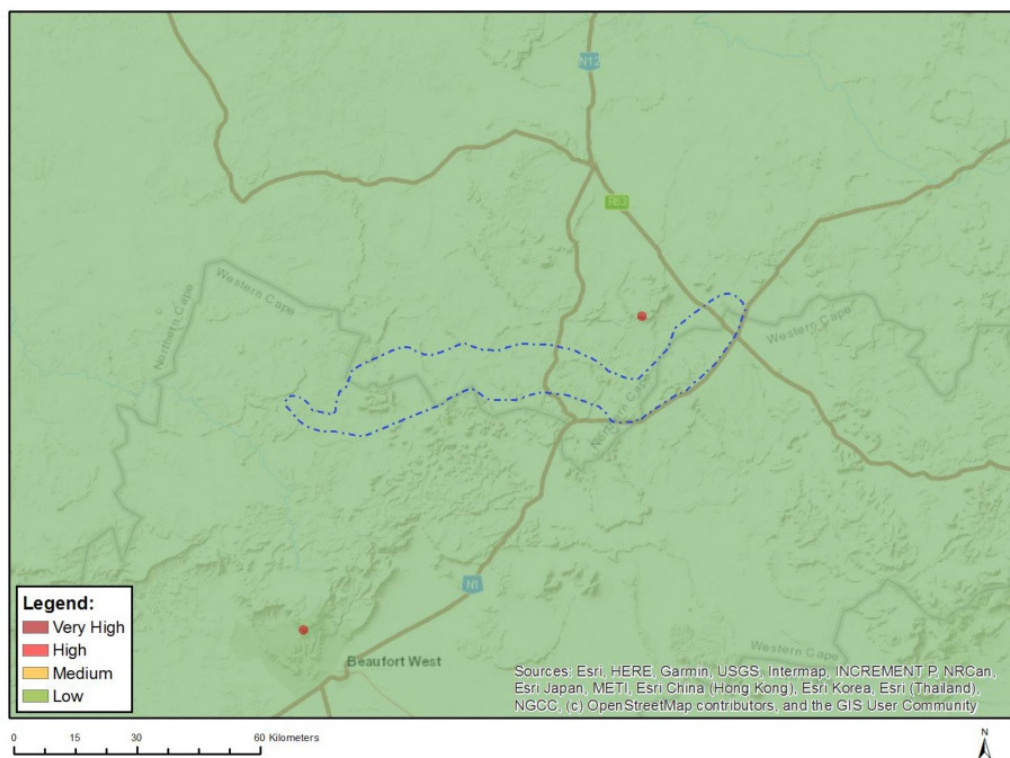


Very High sensitivity	High sensitivity	Medium sensitivity	Low sensitivity
			X

Sensitivity Features:

Sensitivity	Feature(s)
Low	Low sensitivity

MAP OF RELATIVE DEFENCE THEME SENSITIVITY

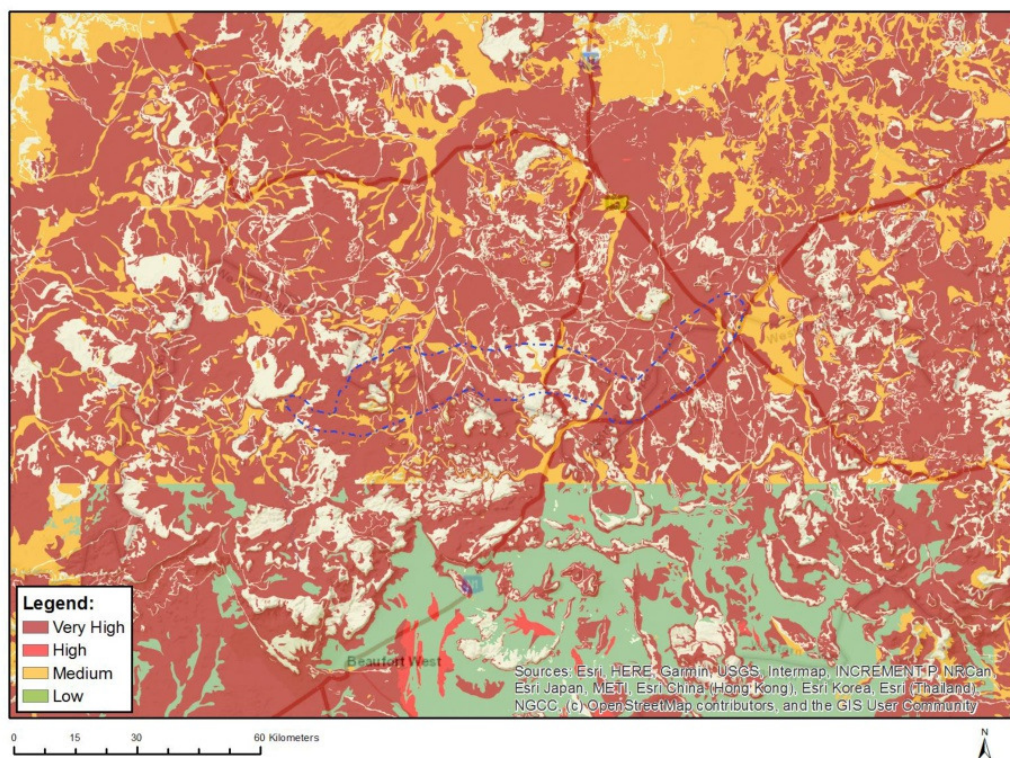


Very High sensitivity	High sensitivity	Medium sensitivity	Low sensitivity
			X

Sensitivity Features:

Sensitivity	Feature(s)
Low	Low Sensitivity

MAP OF RELATIVE PALEONTOLOGY THEME SENSITIVITY

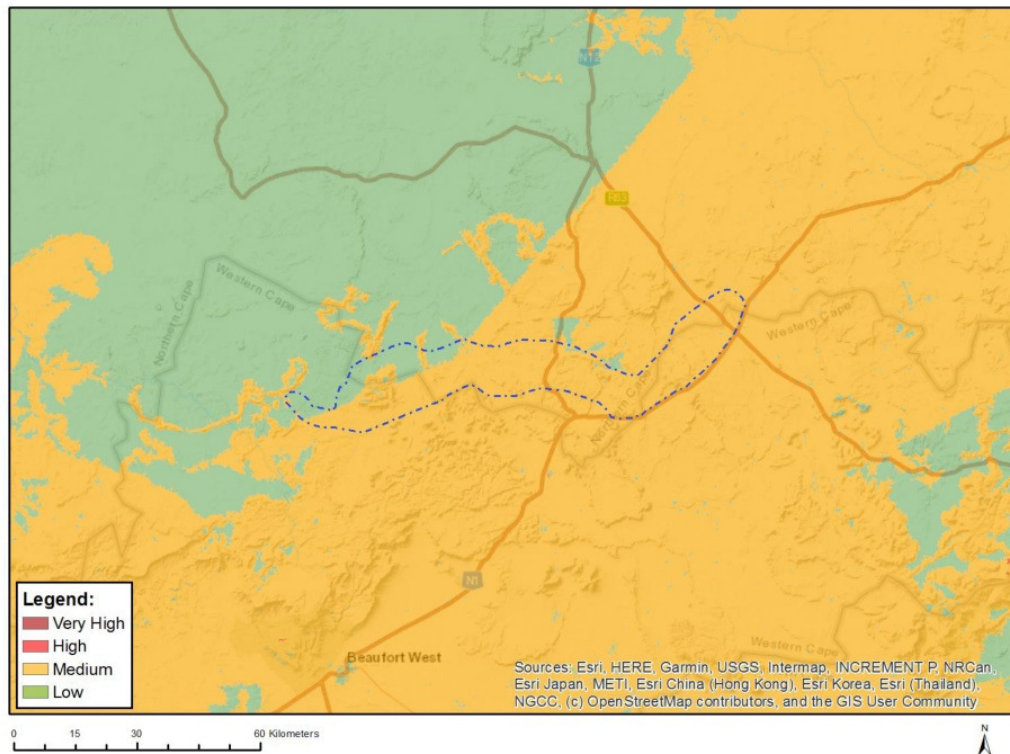


Very High sensitivity	High sensitivity	Medium sensitivity	Low sensitivity
X			

Sensitivity Features:

Sensitivity	Feature(s)
Medium	Features with a Medium paleontological sensitivity
Very High	Features with a Very High paleontological sensitivity

MAP OF RELATIVE PLANT SPECIES THEME SENSITIVITY



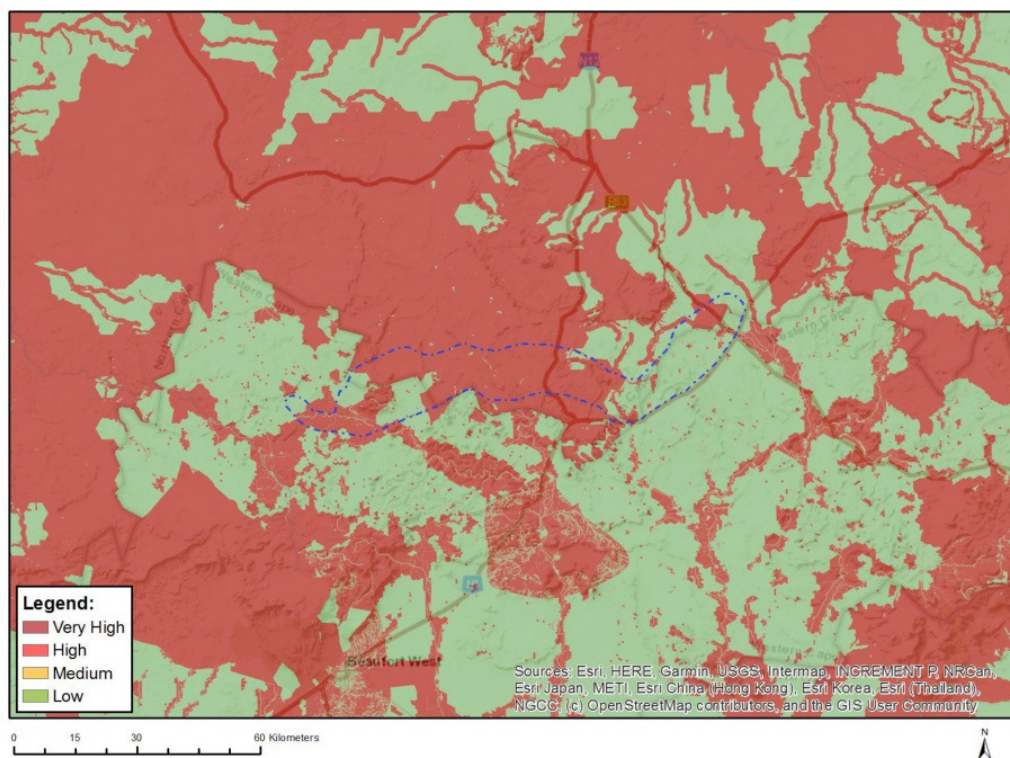
Where only a sensitive plant unique number or sensitive animal unique number is provided in the screening report and an assessment is required, the environmental assessment practitioner (EAP) or specialist is required to email SANBI at eiadatarequests@sanbi.org.za listing all sensitive species with their unique identifiers for which information is required. The name has been withheld as the species may be prone to illegal harvesting and must be protected. SANBI will release the actual species name after the details of the EAP or specialist have been documented.

Very High sensitivity	High sensitivity	Medium sensitivity	Low sensitivity
		X	

Sensitivity Features:

Sensitivity	Feature(s)
Low	Low Sensitivity
Medium	Isolepis expallescens
Medium	Hereroa concava
Medium	Sensitive species 945
Medium	Tridentea virescens

MAP OF RELATIVE TERRESTRIAL BIODIVERSITY THEME SENSITIVITY



Very High sensitivity	High sensitivity	Medium sensitivity	Low sensitivity
X			

Sensitivity Features:

Sensitivity	Feature(s)
Low	Low Sensitivity
Very High	Critical biodiversity area 1
Very High	Critical biodiversity area 2
Very High	Ecological support area 2
Very High	Ecological support area
Very High	FEPA Subcatchments
Very High	Protected Areas Expansion Strategy