

1. ISETHULO

Lesi Sifinyezo Esilula (NTS) sifinqa Umbiko Womthelela Kwezemvelo (EIA) kanye Nohlelo Lokuphathwa Kwezemvelo (EMPr) futhi silungiselelwe i-Melmoth Iron Ore Project (MIOP). Le EIA kanye ne-EMPr kuzothunyelwa eMnyangweni Wezimbiwa Namandla waKwaZulu-Natal (DMRE) ukuze kufakwe iSicelo Selungelo Lokumba Umgodi (MRA). Le NTS itholakala ngesiNgesi nangesiZulu futhi iye yasabalaliswa kubabambiqhaza ngenjongo yokubazisa nokubanika ithuba lokuphawula.

I-Jindal Iron Ore (Pty) Ltd (Jindal), ingeye-Jindal Steel and Power (Mauritius) Limited (74%) nozakwabo we-BBBEE yaseNingizimu Afrika, uMnu. Thabang Khomo (Pty) Ltd (26%). I-Jindal inamaLungelo Okuhlola Izimbiwa (PR) amabili kuMasipala Wendawo YaseMthonjaneni (LM) e-KZN. Umhlaba Osenyakatho (PR 10644) uwubukhulu obungu-8 467 ha bese Umhlaba Oseningizimu (PR 10652) ube ubukhulu obungu-11 703 ha. Ngaphambilini i-Jindal ike yahlola izimbiwa kulezi zindawo ze-PR, kodwa yawumisa lowo msebenzi ngo-2016. Ukusimama kwakamuva kwentengo ye-iron ore kuye kwakhuthaza i-Jindal ukuba iphinde iqale i-Jindal MIOP futhi njengamanje yenza i-Bankable Feasibility Study (BFS).

Indawo ye-Jindal MIOP iqhele ngamakhilomitha awu-25 eningizimu-mpumalanga yeMelmoth, kuMasipala Wendawo YaseMthonjaneni (LM) eSifundazweni saKwaZulu-Natal (KZN) eNingizimu Afrika. I-Jindal ihlongoza ukumba imayini engumgodi ovulekile we-iron ore kanye nengqalasizinda yokucubungula kuleyo ndawo ukuze kumbiwe amathani ayizigidi eziwu-32 njalo ngonyaka (mtpa) e-iron ore azobe esecubungulwa kuyo le ndawo ukuze kukhiqizwe cishe u-7 mtpa we-iron ore concentrate. Kuhlongozwa ukuba i-Jindal MIOP yenziwe ngezigaba futhi lesi Sicelo Selungelo Lokumba Umgodi (MRA) sihlanganisa kuphela ukumba engxenyeni eseningizimu-mpumalanga Yomhlaba Oseningizimu (Umfanekiso 1). Nge-MRA i-Jindal ihlose ukuhlanganisa ama-PR ayo Emihlaba Esenyakatho Neseningizimu ukuze abe yiLungelo Lokumba elilodwa.

I-Jindal iqoke i-SLR Consulting (Ningizimu Afrika) (Pty) Ltd Njengomhloli Wezemvelo Ozimele, ukuba yenze inqubo ye-EIA kanye nokusingatha ukubamba iqhaza komphakathi (PPP) kwenzelwa i-MRA.

2. IMIHLABA ETHINTEKAYO KU-MRA

Imihlaba elandelayo iyingxenye ye-MRA:

UMhlaba Osenyakatho

- Ingxenye 3 no-4 wePulazi No. 11 15831
- Ingxenye ye-Remaining Extent (RE) yePulazi iNtembeni 16921

UMhlaba Oseningizimu

- I-RE, Izingxenye 1, 2, 3, no-4 zePulazi i-Black Eyes 13385
- I-RE, Izingxenye 1, 2, no-3 zePulazi i-Goedgeloof 6106
- I-RE yePulazi i-Kromdraai 6110
- Ingxenye 3, 4, 5, 6, 7, 8, 12, 13, 14, 15, no-16 yePulazi i-Wilderness 6107
- Ingxenye ye-RE yePulazi i-Vergelegen 6104
- I-Goedertrow 89 No. 7806
- Ingxenye ye-Rem of Reserve No. 11 No. 15831

3. UNGABANDAKANYEKA KANJANI?

Le EIA kanye Nombiko Wohlelo Lokuphathwa Kwezemvelo (EMPr) kukhishiwe njengamanje njengengxenye yenkathi eyizinsuku ezingu-30 zokuhlola komphakathi kusukela ngomhla ka-14 Julayi kuya ku-14 Agasti 2023 ukuze kunikezwe Abanesifiso Nabathintekayo (I&APs) ithuba lokuphawula kunoma yisiphi isici sephrojekthi kanye nalokho okutholwe yinqubo ye-EIA neye-EMPr. Konke ukuphawula okutholwe phakathi nenqubo yokuhlola kuzofakwa ku-EIA Nasembikweni Wokuphawula Nokuphendula ozothunyelwa ku-DMRE.

Ungabandakanyeka ngokuhlola i-NTS noma Umbiko:

UMbiko We-EIA nowe-EMPr uyatholakala kulezi zindawo ezilandelayo:

- Ukuya emhlanganweni womphakathi - 26 Julayi 2023 eMari's Cottage, 17 Flight Street, Melmoth, kusukela ngo-09:00 kuze kube u-21:00. Izethulo ezisemthethweni zizokwenziwa ngo-11:00, ngo-15:00 nango-18:00.
- Umbiko ophelele utholakala lapha <https://slrpublicdocs.datafree.co/public-documents/JindalMIOP>, ungangena kuwo usebenzisa umakhalekhukhwini ongena ku-inthanethi ngaphandle kokusebenzisa idatha.
- Umbiko ophelele uyatholakala nalapha: <https://slrconsulting.com/public-documents>.
- Okubhalwe ephepheni kutholakala kulezi zindawo ezilandelayo:

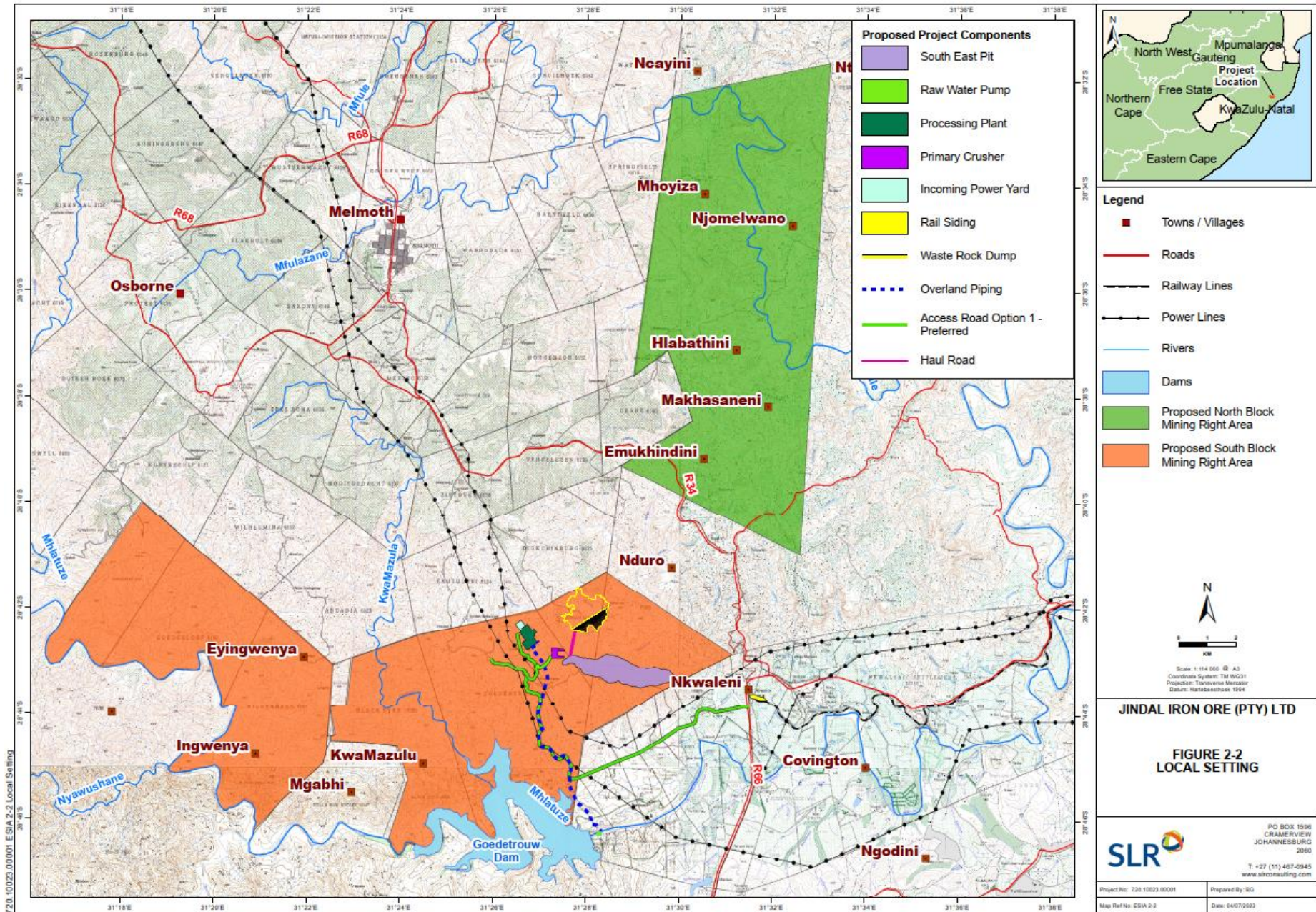
INDAWO	IKHELI
Entembeni Traditional Court	Ndundulu
Obuka Traditional Court	Obuka
Yanguye Traditional Court	Yanguye
Melmoth Public Library	21 Reinhold Street, Melmoth
Eshowe Public Library	1 Hutchinson Street, Eshowe
King Dinuzulu Public Library	875 Inkosi Ndwandwe Street, Eshowe
Nkwaleni Store	Nkwaleni
Jindal Africa Office	15 Arbor Street, Melmoth

Ukuze uthole imininingwane eyengeziwe sicela uthinte lo muntu:

KUQONDISWE KU: Ms Genie de Waal

I-imeyili: genie.dewaal@zutari.com

UKUPHAWULA KUDINGEKA NGOMHLA KA-14 AGASTI 2023



Umfanekiso 2: Ukhwakheka okuhlongozwayo kwe-Jindal MIOP

4. INCAZELO YEPHROJEKTHI

I-Jindal ihlongoza okulandelayo kwe-Jindal MIOP:

- Ukumba emgodini ovulekile engxenyeni eseningizimu-mpumalanga yoMhlaba Oseningizimu (obizwa ngokuthi Umgodi Oseningizimu-mpumalanga) Izilinganiso zokugcina Zomgodi Oseningizimu-mpumalanga ngemva kweminyaka ewu-25 cishe ziyoba amamitha awu-4 000 empumalanga kuya entshonalanga, amamitha awu-1000 enyakatho kuya eningizimu namamitha awu-550 ukujula.
- Ukumba amathani angaphezu kwezigidi eziwu-800 e-ore eminyakeni engaba ngu-25 okukhiqiza amathani acishe abe izigidi eziwu-32 ngonyaka (mtpa) e-iron ore.
- I-waste rock dump (WRD) ukuze kulahlwe amatshe angadingeki. I-WRD iklanyelwe ukuba ibe nobude obungamamitha awu-251 futhi ithatha indawo engaba ngu-204 Ha. I-WRD ihlinzeka ngendawo yokugcina izinto eziyizigidi eziwu-194 m³ ezosetshenziswa iminyaka engu-25.
- Umshini wokucubungula ozogaya futhi uhlukanise izinto ngozibuthe ukuze kukhiqizwe cishe u-7 mtpa we-concentrate ezobe isithunyelwa kwamanye amazwe (bambalwa abantu abayithengayo kuleli).
- Ingqalasizinda ehambisana nalokhu ezosekela imayini izohlanganisa: ilebhu, indawo yokulayisha esitimeleni, imigwaqo, intambo kagesi kanye nesiteshi esincane, amapayipi amanzi, ingqalasizinda yokulawulwa kwamanzi emvula, amapayipi e-concentrate, amahhovisi, indlu yokushintsha, izindawo zokusebenza kanye ncingo lokubuya (phakathi kokunye).
- Isibalo samanzi adingekayo singamamitha awu-1 500³/h, ngokusekelwe emsebenzini wesikhungo waminyaka yonke. Lokhu kulingana no-11.56 Gl/a. Nokho indawo okuqoqana kuyo amanzi eMhlathuze, njengamanje ithwele kanzima, ngenxa yalokho kudingeka kuhlolwe izindlela ezihlukahlukene njengengxenyane yeSicelo Selayisensi Yokusebenzisa Amanzi (WULA).
- Ukuthuthukisa umzila wesitimela phakathi kweNkwalini Siding kanye ne-Richards Bay Port ukuze kuthuthwe i-iron ore concentrate (ingxenyane yomsebenzi ohlukile).
- Okusadaka okuvela emshinini ocubungulayo kuzolahlwa endaweni egcina izinsalela (TSF) (nalokhu kuyingxenyane yomsebenzi ohlukile).

Ukwakheka okuhlongozwayo kwe-MIOP kungabonwa eMfanekisweni 1.

3. INQUBOMGOMO KANYE NOKOMTHETHO

Ngaphambi kokuqala kwe-Jindal MIOP okuhlongozwayo, kudingeka Ukugunyazwa Kwezemvelo okuvela kulezi ziphathimandla ezifanele:

- ISicelo SeLungelo Lokumba esivela e-DMRE ngokuvumelana noMthetho We-Mineral and Petroleum Resources Development Ka-2002 (uMthetho No. 28 Ka-2002) (MPRDA).
- Ukugunyazwa Kwezemvelo okuvela e-DMRE ngokuvumelana noMthetho We-National Environmental Management Ka-1998 (uMthetho No. 107 Ka-1998) (NEMA), njengoba uchibiyelwe.
- ILayisensi Yokulawulwa Kwemfucuzwa (WML) evela e-DMRE ngokuvumelana noMthetho We-National Environmental Management Waste Ka-2008 (uMthetho No. 59 Ka-2008) (NEM:WA).
- ILayisensi Yokusebenzisa Amanzi (WUL) evela eMnyangweni Wezamanzi Nokuthuthwa Kwendle (DWS) ngokuvumelana

noMthetho Wezamanzi Kazwelonke Ka-1998 (No. 36 Ka-1998) (NWA).

Inqubo yokuhlola ezemvelo kanye neye-EIA, eyenziwa ngokuvumelana Nemithethonqubo Ye-EIA, 2014, yenziwe ukuze isize ekuthathweni kwesinqumo se-DMRE. UMBiko We-EIA nowe-EMPr uhlola izinkinga ezingase zibe khona ngokuphathelele ne-Jindal MIOP ehlongozwayo futhi uthole izinkinga ezingase zibe nkulu kanye nezixazululo ukuze kuncishiswe umthelelo ngokusemandleni.

4. ISIDINGO NOKUFISELEKA KWEPHROJEKTHI

Izici eziyinhloko zoMhlahlandlela Wesidingo Nokufiseleka zidingidwa ezingxenyeni ezilandelayo:

Ukusetshenziswa Kwemvelo Ngendlela Esimeme Kanye Nokusetshenziswa Kwezimbiwa

Indawo ehlongozwayo ye-Jindal MIOP iwumhlaba 'okungakhiwanga lutho' kuwo (Umfanekiso 2) futhi imiphumela yocwaningo lwezinhlobo zezinto eziphilayo ibonisa ukuthi indawo ekhonjwe yephrojekthi okuzokwenziwa kuyo i-Jindal MIOP ihlotshaniswa nezinye zezinhlobo zezilwane okudingeka zivikelwe (SCC). Ukukhuliswa Komgodi Oseningizimu-mpumalanga kanye ne-WRD kuzoholela ekulahlekeni kwe-Moist Coast Hinterland Grassland (Esengozini) kanye ne-Dry Coast Hinterland Grassland (Esengcupheni). Nokho, ngenxa yokuba kwalo mhlaba amadlelo kuso sonke isifunda lezi zindawo ezinotshani ngokwezinga elithile beseziqalile ukonakala/ukushintsha.



Umfanekiso 2. Isithombe SoMhlaba Oseningizimu uma umi enyakatho

Ucwaningo lwe-Terrestrial Ecology luye lwenziwa ukuze kuqondwe umthelelo ongase ube khona endaweni enotshani kanye nokuxhumana okuqhubekayo nababambiqhaza basendaweni futhi ukusetshenziswa kohlelo lokuphathwa kwendawo enotshani ngendlela esimeme kuzoba semqoka ekuqinisekiseni ukuthi indawo enotshani esaphelele ayonakaliswa. Kuzobaluleka nokulwa nezitshalo ezivela kwenye indawo ezihlobana nokushintsho emvelweni, okubangelwe ukumba kanye nokudla kwemfuyo ngokweqile, kanye nokusetshenziswa kohlelo lokulwa nezitshalo ezivela kwenye indawo.

Umsebenzi wokumba uzodinga amanzi asetshenziswa emshinini wokucubungula, ukulawulwa kothuli, ukuqezwa kwezimoto, endlini yokushintsha kanye nasehovisi. Ukuhlolwa kokutholakala kwamanzi kuye kwenziwa futhi ukudonswa kwamanzi endaweni okuqoqana kuyo amanzi eMhlathuze kuye kwahlolwa. Indawo okuqoqana kuyo amanzi eMhlathuze ithwele kanzima futhi ngenxa yalokho i-DWS ingase icabangele kuphela izindawo ezintsha uma abafake isicelo besiza ekuzeni nezixazululo, okuzobe sekukhiqiza amanzi engeziwe endaweni aqoqana kuyo. Lezi zindlela zizodinga ukuhlolwa okwengeziwe uma kwenzeka iLungelo Lokumba ligunyazwe futhi zizoxhomeka ekugunyazweni yi-DWS isebenzisa i-WULA. Izidingo zamanzi cishe zizoncipha njengoba umgodi ujula

ngenxa yokusetshenziswa ngokuphindaphindiwe kwamanzi aqoqana emgodini.

Ukuthuthukiswa Okufanele Komnotho Nomphakathi

Cishe i-Jindal MIOP izoba ngenye yamaprojekthi amakhulu angaphandle atshala imali eNingizimu Afrika eminyakeni yamuva. Imayini izodala ngokuqondile amathuba emisebenzi abantu abangaba ngu-800 kanye nemisebenzi engaqondile yabantu abangaba ngu-1 600 phakathi nesigaba sokusebenza. UHulumeni WaseNingizimu Afrika, omasipala besifundazwe nabasendaweni bazothola inkokhelo enezelwe evela ekumbiweni komgodi, intela, izimvume kanye nezindleko.

Umqulu Wezimayini, 2018, washicilelwa ngoSeptemba 2018 futhi ubhekwa njengethuluzi lokugquguzela ushintsho lwemboni yemayini nezimbiwa. Ngokuyinhloko, Umqulu Wezimayini usekelwe esiqinisekiseni sokuthi umcebo wezimbiwa wezwe ungowazo zonke izakhamuzi futhi labo abahlala eduze kwemithombo yezimbiwa kufanele bathole izinzuzo zokuthuthukiswa komnotho womphakathi ekumbiweni nasekucubungulweni kwezimbiwa. Njengoba kunjalo ngezinye izinkampani zezimayini eNingizimu Afrika, i-Jindal ibophekile ukuba ithobele lo Mqulu Wezimayini.

Ukwenezela kulokhu, Uhlelo Lokuthuthukiswa Kwezwe LaseNingizimu Afrika lihlose ukuqeda ububha kanye nokunciphisa ukungalingani ngo-2030. I-Jindal MIOP ehlongozwayo ingafaka isandla ekuphumelelisweni kokuthuthukiswa komnotho kanye nokukhula okubandakanya wonke umuntu kusetshenziswa imali engenayo kanye nentela futhi kudalwe amathuba emisebenzi. Ngokusetshenziswa Kohlelo Lomphakathi Nemisebenzi (SLP), iprojekthi ehlongozwayo ingafaka isandla kumaprojekthi akhoniwe kusetshenziswa uhlelo Lokuthuthukiswa Komnotho Wasendaweni (LED) olwenziwe uMasipala Wendawo YaseMthonjaneni (LM), oluzobe seluletha izinzuzo eziqondile emiphakathini ethintwa ukwakhiwa kweprojekthi.

Okubaluleke nakakhulu, i-Jindal MIOP ehlongozwayo kumele ithathe izinyathelo zokunciphisa noma yimiphi imithelela emibi kwezolimo (Umfanekiso 3) kanye nokuthuthukiswa kwezokuvakasha, njengoba kokubili lokhu kubhekwa njengezimboni ezisemqoka emnothweni kamasipala.



Umfanekiso 1 Ukukhiqizwa Komoba Ngaphansi Komshini Wokunisela eNkwalini Valley

5. UKUBAMBA IQHAZA KOMPHAKATHI OSEKWEZIWE KUZE KUBE MANJE

Ukubamba iqhaza komphakathi okulandelayo kuye kwenziwa kuze kube manje:

- Umhlangano owandulela ukufakwa kwesicelo obanjwe ne-DMRE kanye nokugunyazwa Kohlelo Lokubandakanya Ababambiqhaza – 3 Mashi 2021.
- Ukuxhumana njalo ne-Zulu-Entembeni Traditional Authority.
- Ukuthuthukiswa nokubuyekizwa okuqhubekayo kweminingwane Yabanesifiso Nabathintekayo (I&AP);
- Ukwaziswa kwama-I&AP, kuhlangele abanikazi bemihlaba, iziphathimandla zikahulumeni nezendabuko – 17 Juni 2021;
- Ukusabalaliswa Kwedokhumenti Enolwazi Lwesizinda (BID), ngesiNgesi nangesiZulu, kusukela ngomhla ka-17 Juni 2021;
- Ukushicilelwa kwezikhangiso;
 - I-The Mercury, 15 Juni 2021, IsiNgesi;
 - I-Eyethu Baywatch - 16 Juni 2021, IsiNgesi;
 - Isolezwe - 18 Juni 2021, IsiZulu;
 - I-Zululand Observer - 21 Juni 2021, IsiNgesi;
- Ukufakwa kwezaziso ezindaweni ezihlukahlukene eMelmoth, Eshowe NaseMhlabeni Oseningizimu;
- Imihlangano Yokunika Umphakathi Ulwazi eMelmoth (18 Agasti 2021) kanye naku-MS Teams (6 Julayi 2021);
- Imihlangano engu-24 yababambiqhaza kanye nabaholi bendabuko nemiphakathi yabo, abalimi, osomabizini basendaweni kanye neziphathimandla (eyabanjwa phakathi kukaJuni no-Agasti 2021);
- Izikhangiso zomsakazo;
 - I-Icora 100.40 fm – 15 kuya ku-19 Juni 2021;
 - Izwi Lomzansi 98.0 fm – 21 kuya ku-23 Juni 2021;
- Umbiko Wezemvelo wakhishwa izinsuku ezingu-30 ukuze uhlolwe umphakathi kusukela ngomhla ka-16 Febhuwari kuya ku-18 Mashi 2022;
- Umbiko we-EIA nowe-EMPr usukhishiwe manje ukuze uhlolwe umphakathi izinsuku ezingu-30 kusukela ngo-14 Julayi kuya ku-14 Agasti 2023.

6. UKUHLAZIYA OKUHLUKILE

Kuye kwenziwa ukuhlola ukuze kuqondwe ukuphumelela kokumbiwa koMhlaba Oseningizimu kuqala kunalowo Osenyakatho. Ngenxa yobunzima bokufinyelela uMhlaba Osenyakatho kuye kwenziwa umsebenzi owengeziwe oyisisekelo kanye nomklamo oningiliziwe woMhlaba Oseningizimu. Ukwenezela kulokho, uMhlaba Oseningizimu unemigwaqo engcono, unezintambo zakwa-Eskom esezikhona kakade eduze kwendawo ethandwayo yesikhungo futhi yiwona ofinyeleleka kangcono eNkwalini Rail Siding (indlela ehlongozwayo yokuthutha i-concentrate iye eRichards Bay). Ngakho, uhlelo lwamanje ukwenza isigaba 1 Sokumba engxenyeni eseningizimu-mpumalanga yoMhlaba Oseningizimu. Okunye okuhlukile okuye kwacatshangelwa kuhlangelelwa:

- Umgodi ovulekile (okuyiwo okhethwayo) uma uqhathaniswa nongaphansi komhlaba;
- Izikali ezihlukile zokumba: 20, 24, 28 noma 32 mtpa (okukhethwayo);
- Ukwakheka kwalo mhlaba okuhlukile ngokuvumelana ne-WRD, imigwaqo yokufinyelela kanye nesikhungo sokucubungula (ngisho noma izinketho zilinganiselwe ngenxa yomhlaba onezintaba):

- Okuhlukile “okungeke kusetshenziswe”, kucatshangelwa imiphumela kwezenhlalo nakwezemvelo engase ivele uma ukwakhiwa kungaqhubeki.

Ngale nqubo indlela ehlukile iye yahlolwa futhi ihlanganisiwe eMfanekisweni 1.

7. YIZIPHI IZINTO ZEMVELO NEZENHLALO EZIBUCAYI NGOKUYINHLOKO?

Isimo sendawo engokoqobo, isimo sezinto eziphilayo kanye nesimo sezenhlalo sendawo engase ithinteki siye saphenywa ukuze kuhlolwe umthelela. Umbiko we-EIA wethula okutholwe uphenyo oluye lwenziwa. Isifinyezo salokho okutholiwe sikulezi zingxenye ezilandelayo futhi kuvezwe eMfanekisweni 8.

7. 1 Indawo Engokoqobo

Indawo yaseMthonjaneni LM inesimo sezulu esifudumele nesinomswakama, esikusekela kahle ukulima okwenziwa endaweni. Indawo yaseMthonjaneni LM ithola amazinga okushisa ansuku zonke aphakathi kuka-16°C no-20°C, futhi isilinganiselo semvula siphakathi kuka-2 000 mm no-2 400 mm njalo ngonyaka.

Ngokuphathelene nokuma kweMelmoth, ingamamitha angu-800 ngaphezu kwezinga lamanzi futhi izungezwe izintaba eziphansi zetshe lesihlabathi kanye nezigodi zetshe lodaka. Umumo wamatshe endawo uye wabangela ukwakheka okuhlukahlukene komhlaba, kusukela emithambekeni kuye emagqumeni aphakeme atholakala ezigodini. Kokubili uMhlaba Osenyakatho Noseningizimu uqokethe amagquma. Ukuchazwa koMhlaba Osenyakatho Noseningizimu kubonisa ukuthi lo mhlaba ufaneleka kangcono ukuba ngamadlelo emfuyo, zincane kakhulu izindawo ezinomhlaba ofanelekela ukutshalwa kwesivuno.



Umfanekiso 4. Idamu Lase-Goedertrouw

Imininingwane yamanzi angaphansi komhlaba evela ku-DWS National Groundwater Archive eqhele ngamakhilomitha awu-5 e-Jindal MIOP ibonisa ukuthi amazinga amanzi angaphansi komhlaba aphakathi kwamamitha angu-2.1 kuya kwangu-56.4 ngaphansi kwezinga lomhlaba (mbgl). Amazinga amanzi angaphansi komhlaba akalwe nge-Golder (2016) phakathi ne-hydrocensus eMhlabeni Oseningizimu abonise izinga elivamile lamanzi angaphansi komhlaba elingu-45 mbgl. Eduze kwe-TSF, okuyindawo esezansi eduze nomfula uMhlathuze, amanzi angaphansi komhlaba ngokuvamile aba mancane kakhulu (< 5mbgl). Ukuhamba kwamanzi angaphansi komhlaba esifundeni kuye kwatholakala ukuthi kusuka entshonalanga kuye empumalanga kodwa endaweni ukuhamba kwawo kungase kuhluke. Ngokwe-Golder (2016), imiphumela yekhwalthi yamanzi etholwe ngaleso sikhathi yonke ibingaphansi kweMihlahlandlela Yokusebenzisa Endaweni, okwenza amanzi angaphansi komhlaba abe umthombo wamanzi osebenzisekayo. Ngokuphathelene nekhwalithi yamanzi angaphansi komhlaba yale nqubo ye-EIA akukho ukufinyelela okunikeziwe endaweni yomgodi futhi ngenxa yalokho ayikho imininingwane yamakhemikhali amanzi asendaweni yomgodi. Amasampula aqoqwe emithonjeni yamanzi ye-TSF egujwe ngo-

2022 (yi-SLR) abonise ukweqiwa okuningana kwemihlahlandlela yekhwalthi yamanzi ye-SANS 241:2015. Ukweqa kuvamile kwikhwalthi yamanzi ezindaweni okulinywa kuzo isivuno.

Ngokuphathelene namanzi angaphezulu ezimpophoma eMhlabeni Osenyakatho phakathi kwendawo okuqoqana kuyo amanzi e-quaternary (QC) W12B, W12C ne-W12D athululela eMfuleni iMfula bese ehamba njalo aye eningizimu-mpumalanga ayohlangana noMfula uMhlathuze.

UMhlaba Oseningizimu uwelela e-QC W12B nase-W12D futhi uthululela emifuleni uMhlathuze, iKwaMazula, iNyawushane neMavungwini. I-QC W12D ithululela ngasemifuleni iMfula neNtambanana bese ishona eningizimu-mpumalanga iyohlangana noMfula uMhlathuze. IDamu i-Goedertrouw liseMfuleni uMhlathuze (Umfanekiso). Ukuthathwa kwesampula lamanzi aphezulu kwenziwa yi-SLR ngoMeyi 2021 lapho kwathathwa khona amasampula amanzi ayisithupha eziteshini zokuqapha ikhwalthi ezisendaweni yePhrojekthi. Imiphumela yokuhlaziya kwekhwalithi yamanzi yaqathaniswa nemihlahlandlela yokunisela ye-DWS, amanzi emfuyo kanye nezinto eziphilayo zasemanzini kuhlangukane nemihlahlandlela ye-SANS 241 yamanzi aphuzwayo. Imihlahlandlela ye-DWS iqine kakhulu ngoba ilandela indlela engenazingozi ngokuvumelana nezimfuneko zesivuno esizwela kalula. Imiphumela yekhwalthi yamanzi ibonise ukwedlulela kwe-aluminium, i-copper, i-mercury, i-pH kanye ne-Total Cyanide concentrations kuzo zonke izindawo eziyisithupha zokuhlola amanzi.

7. 2 Indawo Yezinto Eziphilayo

I-Melmoth iwela ngaphansi kwesifunda sezimbali sase-Maputoland-Pondoland futhi siyindawo ebaluleke kakhulu ngenxa yezitshalo ezitholakala kuleyo ndawo. Izindawo Ezisemqoka Zezinto Eziphilayo Ezinhlobonhlobo (CBA) kanye Nezindawo Ezisekela Imvelo (ESA) zitholakala kokubili eMhlabeni Osenyakatho Noseningizimu okwenziwa kuwo ucwaningo.

Ngemva kokuhlolwa kokuqala kwendawo kwatholwa imiphakathi emihlanu yezitshalo ezihlukile eMhlabeni Oseningizimu, ehlanganisa:

- Umphakathi 1: I-Ngongoni Veld/I-Eastern Valley Bushveld Open Savannah;
- Umphakathi 2: I-Eastern Valley Bushveld Thicket/I-Ngongoni Veld Closed Woodland (Umfanekiso 5);
- Umphakathi 3: I-Degraded Ngongoni Veld/I-Eastern Valley Bushveld Open Savannah;
- Umphakathi 4: I-Degraded Eastern Valley Bushveld Thicket/I-Ngongoni Veld Closed Woodland;
- Umphakathi 5: I-Secondary Open Savannah/I-Thicket/I-Closed Woodland.



Umfanekiso 5 Umphakathi 2 - I-Dense Closed Thicket (UMhlaba Oseningizimu Ephakathi)

Kwatholwa imiphakathi emihlanu eyengeziwe yezitshalo eMhlabeni Osenyakatho, kuhlanganise:

- Umphakathi 6: I-Ngongoni Veld/I-Northern Zululand Sourveld Open Savannah;
- Umphakathi 7: I-Scarp Forest /I-Northern Zululand Sourveld Thicket/I-Ngongoni Veld Closed Woodland;
- Umphakathi 8: I-Degraded Ngongoni Veld Closed Woodland/I-Northern Zululand Sourveld Thicket;
- Umphakathi 9: I-Degraded Ngongoni Veld/I-Northern Zululand Sourveld Open Savannah;
- Umphakathi 10: I-Secondary Open Savannah/I-Thicket/I-Closed Woodland

Imiphakathi emine kweyishumi esemephini ibhekwa njengefanelana nezimo zemvelo futhi Ibaluleke Kakhulu Emazingeni Emvelo (SEI) (Imiphakathi 1, 2, 6 no-7). Imiphakathi yezitshalo eyisithupha esele Iphakathi Nendawo Kuya Kwephansi kakhulu ku-SEI. Ukwenzela ekubeni sesimweni semvelo esihle kuya kwesiphakathi nendawo imiphakathi emine yezitshalo inamathuba amakhulu okusekela izimbali ze-SCC ezihlukahlukene ezisengozini yokushabalala, eziyivela kancane, noma ezikhula kuphela kulezi zindawo. Ngemva kokuhlolwa kokuqala kwale ndawo, kwaqinisekiswa ukuvela kwama-SCC amabili endaweni eyi-savannah evulekile/endaweni enotshani, okungukuthi Izitshalo Ezizwela Kalula 191 (Ezisengozini) kanye ne-*Moraea graminicola* subsp. *graminicola* (Ecishe Ibe Sengozini, Ekhula Kuphela ENingizimu Afrika). Ukwenzela ezinhlotsheni ezimbili zezitshalo ezisengozini ezikhula kule ndawo, ezivikelwe ngaphansi kwe-National Environmental Management: Biodiversity Act (NEM:BA), kunezinhlobo eziningana zezitshalo ezivikelwe ngaphansi kwe-Natal Conservation Ordinance kanye ne-National Forest Act ezizodinga izimvume zezitshalo ezifanele eziphathimandleni ezifanele (okungukuthi, uMnyango Wezamazalathu, Wezokudoba Kanye Nezemvelo (DFFE) kanye nEzemvelo KwaZulu-Natal Wildlife (EKZNW)).

Ama-SCC amaningana akule ndawo aye aphawulwa njengavela endaweni ecwaningwayo futhi adinga ucwaningo olwengeziwe oluzokwenziwa ongoti abafanele, kuzodingeka kuxazululwe noma yimiphi imithelela engase ibe khona ehlobana nezinhlobo ezithile.



Umfanekiso 6 Isithombe somfudlana ohamba uyothululela eMfuleni Omkhulu (UMhlaba Oseningizimu)

EMhlabeni Oseningizimu, kwatholakala ingqikithi yemifula/imifudlana engu-599 kanye nezindawo ezimanzi ezingu-22 endaweni ecwaningwayo (Umfanekiso 6). EMhlabeni Osenyakatho kwatholakala ingqikithi yemifula/imifudlana engu-331 kanye nezindawo ezimanzi ezingu-63.

Ukuhlolwa komfula ophakeme nempilo yezinto ezihlala emanzini eMhlabeni Osenyakatho kubonisa ukuthi ohamba uyofika eMfuleni iMfule futhi udabule kulo Mhlaba usesimweni esingokwemvelo nesilinganiso esiphezulu se-Ecological Importance and Sensitivity (EIS). Imisebenzi yamanje ivezwe njengaleyo engase ithinte impilo yohlelo lwenhlalo yasemaphandleni, ukufika kwezitshalo zakwezinye izindawo kanye nokulaxazwa kwemihlaba okulinywa kuyo.

Isisekelo socwaningo lomhlaba omanzi kanye nezinto eziphila emanzini eMhlabeni Oseningizimu (PR 10652) siveze ukuthi imizila eminingi yamanzi kule ndawo iyimifula nemifudlana. Imifula nemifudlana iphakathi kwezigaba zemvelo ezisuka ku-D (Isimo Esibi) ziye ku-A (Isimo Esingokwemvelo). Ama-EIS amaningi Asezansi kuya Kwaphakathi nendawo, ngaphandle kwalawo afinyelela uMfula uMhlatuze, abhekwa njengayi-EIS Ephuzulu. Ingqikithi yemihlaba emanzi yafakwa emephini eMhlabeni Oseningizimu. Lokhu kwahlanganisa izigodi ezingu-11 eziwumhlaba omazi ongenayo imizila yamanzi kanye namaxhaphozi angu-12. Lena iphakathi kwezigaba zemvelo ezisuka ku-D (Isimo Esibi) kuya ku-C (Isimo Esiphakathi Nendawo) nezisuka ku-EIS Ephansi kuya Kwephakathi Nendawo.

7. Isimo Somnotho Womphakathi

Indawo ezungeze i-MIOP ehlongozwayo ibhekwa njengendawo esemaphandleni/ indawo engelona idolobha, futhi cishe u-70% womhlaba uphethwe amakhosi neziphathimandla zendabuko. Ukuphela kwendawo ethuthukile kwezicwaningwayo yi-Melmoth (maphakathi nentshonalanga yendawo ecwaningwayo), ecishe ibe ngamakhilomitha angu-15 uma uya enyakatho yentshonalanga ye-Jindal MIOP ehlongozwayo.

Kunemiphakathi eminingana ehlala endaweni ehlongozwayo ye-Jindal MIOP futhi amakhaya amaningi anezindlu zezitini kanye nezakhiwe ngendlela yendabuko (Umfanekiso 7).

Kukhona izindawo ezintathu zeziPhathimandla Zendabuko eMthonjaneni LM:

- IBiyela KwaYanguye Traditional Authority isenyakatho mpumalanga kamasipala.
- IZulu-Entembeni Traditional Authority iseningizimu mpumalanga kamasipala.
- IBiyela-Obuka Traditional Authority ingaseMpumalanga kamasipala.

Kokubili uMthonjaneni kanye noMlalazi LM zinomnotho oncike kakhulu embonini yezolimo, eyokukhiqiza kanye neyezimayini.

Kulabo masipala ababili iningi labantu abafuna umsebenzi linomatikuletsheni futhi amathuba okuthola umsebenzi aphakeme eMthonjaneni kunaseMlalazi. Nokho, iholo lonyaka elivamile

lekhaya lisesigabeni esiphansi sehoho, okuyihoho lonyaka elingaphansi kuka-R40 000.

Umkhizozo wezolimo eMihlabeni Esenyakatho Neseningizimu uphelela nje kowokuziphilisa, amasimu aphakathi kuka-5 no-10 ha. IMihlabeni Esenyakatho naseNingizimu ayiweli ngaphansi kwe-High Potential Agricultural Area (HPAA) ngisho noma indawo yase-Jindal MIOP izungezwe izindawo ezinamathuba amakhulu okulima. Indawo edume kakhulu yomkhizozo eningizimu-mpumalanga yomngcele Womhlaba Oseningizimu, yisifunda saseNkwalini. Kule ndawo, kukhizozwa izitshalo ezihlukahlukene eziniselwayo ezihlanganisa okusawolintshi, ama-macadamia, ubhanana kanye ne-passion fruit. Ezinye izindawo zinomoba oniselwayo. Amahlathi nezitshalo ezidayiswayo kutholakala ngasenyakatho yoMhlaba Oseningizimu.

Bobabili omasipala babonisa ithuba elincane lokuncipha kwenani labantu eminyakeni engu-30 ezayo okuyinto cishe ebangelwa ukuhamba kwabantu endaweni beyofuna amathuba emisebenzi emadolobheni aseduzane, njengasEmpangeni nase-Richards Bay. Kunobufakazi bokuthi ukuthuthuka kwamazinga emfundo kuye kwabangela ukuba intsha eqeqeshiwe ishiye amakhaya ihambe iyofuna umsebenzi kwezinye izindawo.

Iningi labantu, kuwo womabili ama-LM, liseminyakeni yokusebenza engu-15 kuya ku-64. Nokho, lokhu kusayisilinganiso esiphansi futhi kubangela umthwalo wokuncika kakhulu endaweni. Kubalulekile kulesi simo ukuba amathuba emisebenzi abe khona ukuze kusekelwe amakhaya anomzali oyedwa onakekela abantu abaningi. Ikhaya elivamile liba nabantu abangaphezu kwabangu-4.

Kuwo womabili la ma-LM, zingaphansi kukahhafa izindlu ezithola amanzi kamasipala. Ukuthola amazinga ayisisekelo okuthuthwa kwendle nakho akukuhle kubo bobabili omasipala futhi cishe ingxenye yezindlu azinazo izindlu zangasese ezishaywayo. Ukuncika kakhulu ezindlini zangasese zomgodi kuyinto ekhathazayo ngoba ukungasingathwa kahle kwendle kungabangela izifo. Izindlu ezingaphezudlwana kweyodwa kwezintathu ethola amasevisi okuthuthwa kukadoti okwenziwa omasipala. Bangaphansi kuka-20% abantu abanogesi emakhaya abo. Ezinye izindlu zincike kupharafini ukuze zipheke futhi zikhanyise.



Umfanekiso 7 Izindlu Zendabuko Zakule Ndawo

Sekuphele iminyaka engaba ngu-200 abantu bakwaZulu behleli endaweni yaseMelmoth futhi izakhamuzi eziningi zisabambelele ngokuqinile emasikweni endawo. Izindawo zasemaphandleni (Umfanekiso 7) ziye zahlala emindenini izizukulwane eziningi futhi abantu abaningi banamathele ngokuqinile emhlabeni onamathuna, izinto zobuciko nezinto zesiko okungenzeka zikhona. Luye lwazanywa Ucwaningo Oluphelele Lwamagugu, nokho ngenxa yezingxabano zomphakathi ngasendaweni yePhrojekthi,

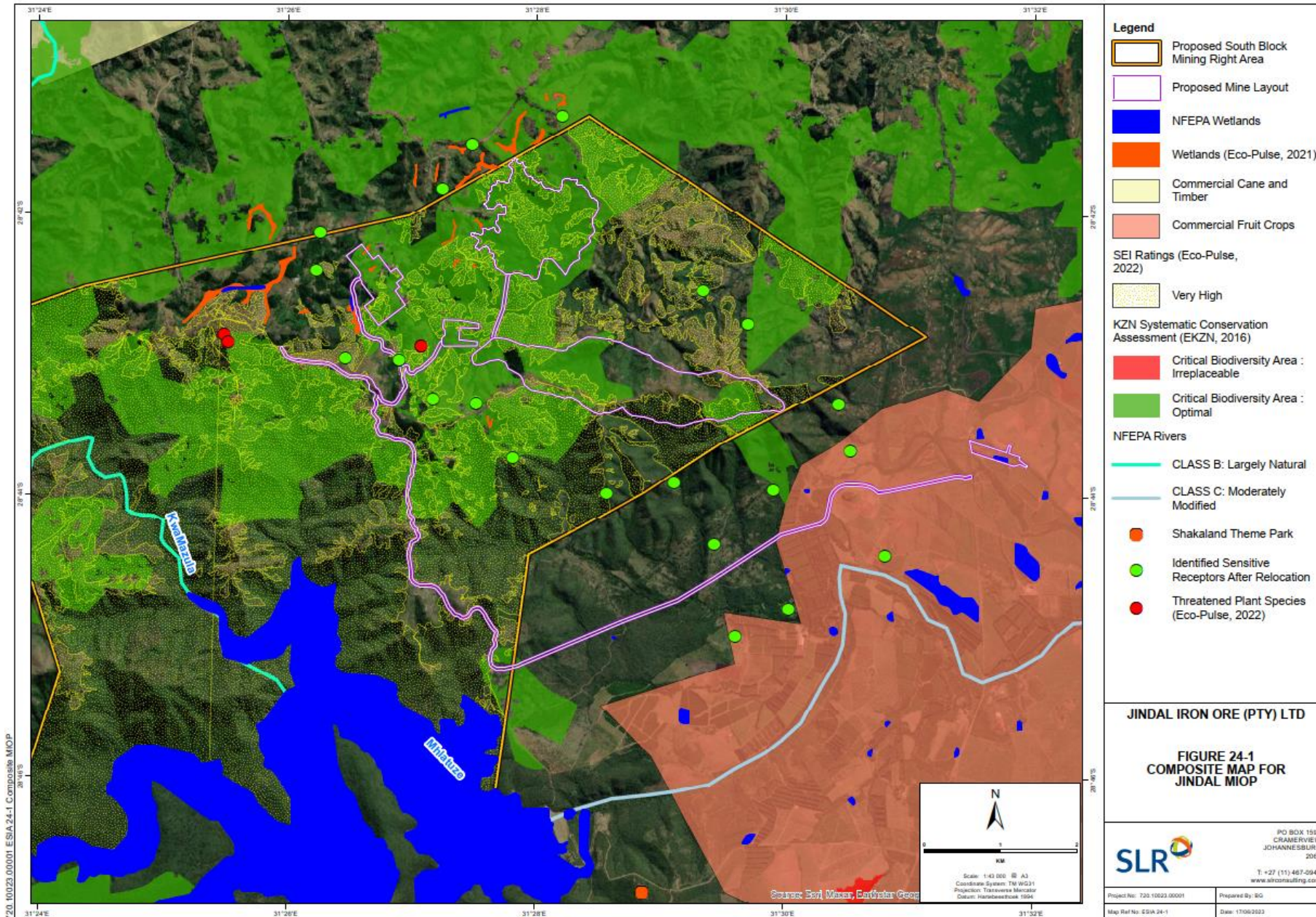
kuye kwangakwazeka ukuya kule ndawo. Ezingxoxweni ezaba khona kwaqinisekiswa ukuthi imingcwabo yenziwa kulandelwa amasiko nokuthi amathuna ngokuvamile aba sekhayeni lomndeni. Izinhlolovo ezengeziwe zizodingeka ukuze kutholakale zonke izinsiza ezingokwesiko noma zamagugu eziwela ngaphansi kwendawo ye-Jindal MIOP njengengxenye yenqubo yokubekwa kabusha endaweni.

5. UCWANINGO LONGOTI

Kuye kwenziwa ucwaningo longoti olulandelayo ukuze kutholwe umthelela:

- Ucwaningo Lwamanzi Angaphansi Komhlaba;
- Ucwaningo Lwamanzi Angaphezulu;
- Ucwaningo Lwezinto Eziphila Emhlabeni;
- Ucwaningo Lwezinto Eziphila Emanzini;
- Ucwaningo Lwekhwalthi Yomoya;
- Ucwaningo Lomsindo;
- Ucwaningo Lwenhlabathi, Amandla Omhlaba Kanye Nokusetshenziswa Komhlaba;
- Ucwaningo Lokubuka;
- Ucwaningo Lwegesi Ebamba Ukushisa Kanye Nokushintsha Kwesimo Sezulu;
- Ucwaningo Lokuqhumisa Nokushukumisa;
- Ucwaningo Lwezinto Zasendulo Ezisendaweni;
- Ucwaningo Lwempilo Yomphakathi;
- Ucwaningo Lwamagugu Amasiko;
- Ucwaningo Lokucinana Kwezimoto;
- Ucwaningo Lomnotho Womphakathi;
- Ukuvala Nesibopho Sezimali.

Okutholakele kulokhu kuhlola kufakiwe kuThebula 1, Thebula 2 neThebula 3.



Umfanekiso 8 Imephu ye-Jindal MIOP yokuzwela kalula

8. OKUTHOLWE KU-EIA KANYE NOKUNCONYELWAYO KWE-JINDAL MIOP

Ukuhlolwa komthelela kwenzelwa ukuqonda imithelela engase ibe khona ehlobana nokwakha okuhlongozwayo, izigaba ze-Jindal MIOP zokusebenza kanye nokuyeka ukusebenza.

Lokhu okutholakele kulokhu kuhlolwa komthelela, okuhlanganisa nokutholwe ongoti, kufinyezwe kuThebula 1, Thebula 2 nakuThebula 3.

Isigaba Sokwakha

Phakathi nesigaba sokwakha kukhona imithelela eminingana emvelweni kanye nasemnothweni womphakathi engase ivele lapho ukwakhiwa kwephrojekthi kuqala. Imithelela eminingi engase ivele ingancishiswa ibe ephakathi nendawo noma ibe mincane kakhulu, nokho, kukhona imithelela eminingana ezoqhubeka imikhulu ngisho noma sekwenziwe imizamo yokuyinciphisa. Le mithelela emikhulu ihlobene ikakhulu nemithelela emvelweni ezwela kalula endaweni ye-Jindal MIOP nasezindaweni ezizungezile (IThebula 1). Imithelela ephawuleka kakhulu ihlobene nokulahleka kwekhaya lezinto eziphilayo, ukulahleka kwe-SCC kanye nemithelela ezinqubweni zemvelo. Ngokusekelwe emihlahlandleni yokusebenza kahle, kuzodingeka kwenziwe ushintsho ezintweni eziphilayo ukuze kusingathwe imithelela uma isicelo sigunyazwa. Kutuswa ukuba imithelela ehlala isikhathi eside emhlabeni nasemanzini aphuzwayo iphenywe futhi isingathwe njengengxenywe yophenyo loshintsho olwenziwa ezintweni eziphilayo. Izimvume zezitshalo ezivikelwe kuzodingeka zitholwe eziphathimandleni ezifanele. Umthelela ekubukekeni kwemvelo unzima kakhulu ukubhekana nawo ngenxa yobukhulu beprojekthi futhi uqhubeka uyinto ebalulekile.

Omune umthelela omkhulu uhlotshaniswa nokuthuthelwa kwabantu kwenye indawo ukuze ukwakhiwa kwemayini kuqale. Lokhu kuzohlanganisa imfuneko yokuthutha amathuna okungase kuthinte imindeni kanye nezizukulwana ezilandelayo. Ukuthuthelwa kwabantu kwenye indawo, uma kwenzeka iphrojekthi iqhubeka ize ifike lapho, kuzokwenziwa ngokuvumelana nemihlahlandlela efanele njengengxenywe ye-Resettlement Action Plan (RAP) (inqubo ehlukile ku-EIA kanye nesicelo sokugunyazwa kwezemvelo). Inani lamakhaya okuzodingeka athuthelwe kwenye indawo cishe lizofika ku-350 kuye ngemiphumela yezingxoxo nomphakathi ngokuphathelene nokuthuthela kwenye indawo. Le nqubo izobangela ukucindezeleka emiphakathini ethintekayo futhi ibaluleke kakhulu. I-RAP kanye nokuthuthwa kwabantu okuhlobene nayo kuzomele kuqedwe ngaphambi kokuba kwenziwe noma yimuphi umsebenzi owandulela ukwakha. Ukwenzela kulokho, imithelela kwezenhlalo ehlobana ne-Jindal MIOP kudingeka iqondwe kucatshangelwa ezombusazwe zomphakathi ngokuphathelene nezemvelo kanye nemiphakathi ethinteka ngokuqondile. Ingozi yokuphazamisa ezenhlalo nezombusazwe ekwakhiweni nasekusebenzeni kwe-Jindal MIOP iqhubeka iphezulu ku-Area of Influence (AoI) ngenxa yokungazinzi komphakathi kanye nemibango yezombusazwe endaweni.

Uhlobo nobukhulu bokwakhiwa okuhlongozwayo cishe kuzoba nomthelela omuhle emnothweni womphakathi ngokudaleka kwamathuba emisebenzi (kulinganiselwa ukuthi kuzodala imisebenzi engu-57 939, engu-26 437 kuyo kulindeleke ukuthi kube yimisebenzi eqondile, engu-14 438 kube yimisebenzi engaqondile bese engu-17 064 ivele ngenxa yokudaleka kwemisebenzi eqondile – UrbanEcon, 2023), ngisho noma lokhu kuzokwenzeka isikhathi esifushane (cishe iminyaka engu-5).

Nakuba iphrojekthi yalolu hlobo kulindeleke ukuba idale amathuba emisebenzi endaweni kanye nasemiphakathini ezungezile, ukuthuthwa kwempahla okwenziwa abahlinzeki bezinkonzo kanye namazinga amakhono amalungu omphakathi kuzonquma izinga la mathuba adluliselwa ngalo emiphakathini.

IThebula 1 Isifinyezo Semithelela Yesigaba Sokwakha Etholakele Kanye Nezilinganiso Zangaphambi Nangemva Kokunciphisa

Umthelela Ongase Ube Khona	Awuncishisiwe	Uncishisiwe
Imvelo		
Umthelela wobuningi bamanzi angaphansi komhlaba	Uphansi kakhulu -	Uyaphawuleka -
Umthelela kwikhwalthi yamanzi angaphansi komhlaba	Uphansi -	Uyaphawuleka
Ikhwalithi enciphile yamanzi aphezulu	Uphakathi nendawo -	Uphansi -
Ukushintshwa kwezindlela zokuthulula nokugeleza kwamanzi	Uphakathi nendawo -	Uphansi -
Umthelela wezikhukhula (kwingqalasizinda)	Uphakathi nendawo -	Uphansi -
Uqondile - Umthelela ezitshalweni, emiphakathini kanye nemithelela ezimisweni zemvelo ezisengozini kanye nokuvikelwa kwezinto eziphilayo	Uphezulu kakhulu -	Uphezulu -
Awuqondile - Umthelela ezitshalweni, emiphakathini kanye nemithelela ezimisweni zemvelo ezisengozini kanye nokuvikelwa kwezinto eziphilayo	Uphezulu -	Uphakathi nendawo -
Uqondile - Umthelela ohlotsheni lwezinto eziphilayo kanye nokuvikelwa kwalezo ezisengozini	Uphezulu -	Uphakathi nendawo -
Awuqondile - Umthelela ohlotsheni lwezinto eziphilayo kanye nokuvikelwa kwalezo ezisengozini	Uphakathi nendawo -	Uphakathi nendawo -
Uqondile - Umthelela ezinqubweni zemvelo zasendaweni nezasesifundeni	Uphezulu -	Uphezulu -
Awuqondile - Umthelela ezinqubweni zemvelo zasendaweni nezasesifundeni	Uphakathi nendawo -	Uphakathi nendawo -

Umthelela Ongase Ube Khona	Awuncishisiwe	Uncishisiwe
Ukulahleka okungokoqobo noma ukushintsha kwendawo ehlala amanzi	Uphakathi nendawo	Uphakathi nendawo
Ukushintsha kwezinqubo zamanzi nomumo womhlaba	Uphakathi nendawo	Uphansi -
Umthelela ezindaweni ezimanzi nasezintweni eziphila emanzini ngenxa yokuncipha kwekhwalthi yamanzi	Uphakathi nendawo	Uphansi -
Umthelela ukuxhumaneni kwemvelo kanye/noma ukuphazamiseka kwemvelo	Kuphakathi nendawo- Kuphansi	Uphansi -
Umthelela kwikhwalthi yomoya ohlanzekile	Uphakathi nendawo	Uphansi -
Umthelela emazingeni omsindo	Uphansi -	Uphansi kakhulu -
Umthelela ekushintsheni kokusetshenziswa komhlaba, ukusuka ekulimeni kuye ekumbeni	Uphakathi nendawo -	Uphansi -
Umthelela wokulahleka kanye/noma ukuncipha kwamandla amanje omhlaba	Uphezulu -	Uphansi -
Umthelela wokwanda kokuguguleka kwenhlabathi	Uphezulu -	Uphakathi nendawo -
Umthelela wokucinana kwenhlabathi	Uphezulu -	Uphakathi nendawo -
Umthelela wokungcola kwenhlabathi	Uphezulu -	Uphansi -
Umthelela wokubukeka kwendawo	Uphezulu -	Uphezulu -
Umthelela wephrojekthi ekushintsheni kwesimo sezulu	Uphansi -	Uphansi -
Umnotho womphakathi		
Ukulahleka kwezinto zasendulo ezilondolozekile	Uyaphawuleka	Uyaphawuleka
Umthelela wokushintsha izinqubo zokulima, izinketho zemakethe kanye nemithombo yomsoco	Uphezulu kakhulu -	Uphakathi nendawo -
Ukuchayeka esifweni se-vector-bone nese-zoonotic	Uphakathi nendawo -	Uphansi -
Ushintsho ekufinyeleleni ezokwelapha	Uphezulu kakhulu -	Uphezulu kakhulu +
Ukulahleka kwezindawo zamagugu amasiko	Uphezulu kakhulu -	Uphakathi nendawo -
Ukuthuthwa kwamathuna	Uphezulu kakhulu -	Uphezulu -
Umthelela kubasebenzisi bomgwaqo kanye nokuphepha emgwaqweni	Uphansi -	Uphansi -
Ukufika kwabantu abazosebenza / ukutheleka kwabafuna imisebenzi	Uphansi -	Uphansi Kakhulu -
Ukubekwa kabusha kanye nokuthuthelwa kwenye indawo	Uphezulu -	Uphakathi nendawo -
Ukuthuthukiswa komphakathi nendlela yokuphila	Uphakathi nendawo -	Uphansi -
Ibhizinisi - imithelela - embonini yezolimo	Uphezulu -	Uphakathi nendawo -
Ibhizinisi - imithelela kwezokuvakasha	Uphezulu -	Uphakathi nendawo -
Umthelela emnothweni wasendaweni nowasesifundeni	Uphezulu +	Uphezulu +

Isigaba Sokusebenza

Phakathi nokusebenza (iThebula 2) kunemithelela emibili engase ibe khona ebilokhu ikhathaza ababambiqhaza; ikhwalthi yomoya (uthuli), kanye nokutholakala kwamanzi. Imodeli yekhwalthi yamanzi ibonisa ukuthi amazanga othuli ezindaweni ezizungezile okulinywa kuzo cishe izoba ngaphakathi kwamazinga alawulekayo. Nokho, kuzobaluleka kakhulu uma i-Jindal MIOP igunyazwa, ukuba iqaphe ngokuqhubekayo ukuze kuqondwe ukuthi imiphumela yemodeli inembile yini futhi kuqinisekiswa ukuthi izinyathelo ezengeziwe zokunciphisa ziyathathwa uma kwenzeka amazanga abe ngaphezu kwalokho obekulindelwe.

Mayelana nokutholakala kwamanzi, kuye kwahlolwa ukudonswa kwamanzi endaweni aqoqana kuyo eMhlathuze, nokho, indawo okuqoqana kuyo amanzi eMhlathuze ithwele kanzima njengamanje futhi ngenxa yalokho i-DWS ingase icabangele kuphela izindawo ezintsha uma abafake isicelo besiza ngezixazululo ezizokhiqiza amanzi engeziwe endaweni aqoqana kuyo. Lezi zixazululo zizohlolwa nge-WULA.

Eminye imithelela engase ibe khona ngemva kokunciphisa ehlobana nesigaba sokusebenza ihlanganisa ukuncipha kwamazinga amanzi angaphansi komhlaba ngenxa yokususwa kwamanzi emgodini ovulekile, ukulahleka okwengeziwe noma ukushintsha kwendawo ehlala amanzi njengoba umgodi ovulekile kanye nomsebenzi we-WRD ukhula kanye nemithelela yokubukeka eqhubekayo. Kukhona nethuba lemithelela emihle ngokuphathelene nokudalwa kwemisebenzi, ukuthuthukiswa komnotho, kanye nemithelela engase ibe mihle ngenxa

yokuthuthukiswa kwemigwaqo. Omunye wemithelela emihle kakhulu phakathi nesigaba sokusebenza kuzoba umthelela omuhle obangelwa ukusebenzisa i-iron, kanye nensimbi, embonini yamandla avuselelwayo. Umnotho womhlaba jikelele ngeke ukwazi ukukhiqiza izinga eliphansi lomoya ongcolisayo we-GHG ngaphandle kokwandiswa kwengqalasizinda yamandla avuselelwayo, okudinga insimbi.

Ngokuphathelele nemithelela emihle, imayini kulindeleke ukuba ibangele imisebenzi yesikhathi esigcwele engu-800 (FTE) ngesikhathi sokusebenza ezohlanganisa imisebenzi yabanamakhono, abanamakhono alinganiselwe kanye nabangenawo amakhono. Kulinganiselwa ukuthi umthelela wokukhiqiza kwamapulazi adayisa imikhiqizo, ngenxa yemayini, uzoba phansi okusho ukuthi izoba mbalwa imisebenzi elahlekayo ngenxa yalokhu. Noma yikuphi ukulahleka kwemisebenzi embonini yezolimo kuzovalwa ukuvuleka kwamathuba emisebenzi okubangelwa yimayini.

IThebula 2 Isifinyezo Semithelela Yesigaba Sokusebenza Etholakele Kanye Nezilinganiso Zangaphambi Nangemva Kokunciphisa

Umthelela Ongase Ube Khona	Awuncishisiwe	Uncishisiwe
Imvelo		
Umthelela kwikhwalthi yamanzi angaphansi komhlaba	Uphezulu kakhulu -	Uphezulu -
Umthelela kwikhwalthi yamanzi angaphansi komhlaba	Uyaphawuleka	Uyaphawuleka
Ikhwalithi enciphile yamanzi aphezulu	Uphezulu -	Uphakathi nendawo -
Ukushintsha kwezindlela zokuthulula nokugeleza kwamanzi	Uphakathi nendawo -	Uphansi -
Umthelela wezikhukhula	Uphakathi nendawo -	Uphansi -
Uqondile - Umthelela ezitshalweni, emiphakathini kanye nemithelela ezimisweni zemvelo ezisengozini kanye nokuvikelwa kwezinto eziphilayo	Uphezulu -	Uphakathi nendawo
Awuqondile - Umthelela ezitshalweni, emiphakathini kanye nemithelela ezimisweni zemvelo ezisengozini kanye nokuvikelwa kwezinto eziphilayo	Uphezulu -	Uphakathi nendawo -
Uqondile - Umthelela enhlotsheni zezinto eziphilayo kanye nokuvikelwa kwalezo ezisengozini	Uphezulu -	Uphakathi nendawo -
Awuqondile - Umthelela ohlotsheni lwezinto eziphilayo kanye nokuvikelwa kwalezo ezisengozini	Uphakathi nendawo -	Uphakathi nendawo -
Uqondile - Umthelela ezinqubweni zemvelo zasendaweni nezasesifundeni	Uphakathi nendawo -	Uphakathi nendawo -
Awuqondile - Umthelela ezinqubweni zemvelo zasendaweni nezasesifundeni	Uphakathi nendawo -	Uphakathi nendawo -
Ukulahleka okungokoqobo noma ukushintsha kwendawo enamazi aphuzwayo	Uphezulu	Uphezulu
Ukushintsha kwezinqubo zamanzi nomumo womhlaba	Uphezulu	Uphakathi nendawo
Umthelela ezindaweni ezimanzi nasezintweni eziphila emanzini ngenxa yokuncipha kwekhwalithi yamanzi	Uphezulu	Uphakathi nendawo
Umthelela ekuxhumaneni kwemvelo kanye/noma ukuphazamiseka kwemvelo	Uphakathi nendawo -	Uphansi -
Umthelela kwikhwalthi yomoya ohlanzekile - impilo yomphakathi	Uphezulu - kuya Phakathi Nendawo	Uphakathi nendawo - kuya Phansi -
Umthelela kwikhwalthi yomoya ohlanzekile - izitshalo ezidayiswayo	Uphansi -	Uphansi Kakhulu -
Umthelela kwikhwalthi yomoya ohlanzekile - ukuqhumisa	Uphakathi nendawo -	Uphansi -
Umthelela emazingeni omsindo	Uphezulu -	Uphakathi nendawo -
Umthelela ekushintsheni kokusetshenziswa komhlaba, ukusuka ekulimeni kuye ekumbeni	Uphezulu -	Uphansi -
Umthelela wokulahleka kanye/noma ukuncipha kwamandla amanje omhlaba	Uphakathi nendawo -	Uphansi -
Umthelela wokwanda kokuguguleka komhlaba	Uphakathi nendawo -	Uphansi Kakhulu -
Umthelela wokucinana kwenhlabathi	Uphezulu -	Uphakathi nendawo -
Umthelela wokungcola kwenhlabathi	Uphezulu -	Uphansi -
Umthelela wokubukeka kwendawo	Uphezulu kakhulu -	Uphezulu -
Umthelela wephrojekthi ekushintsheni kwesimo sezulu	Uphezulu +	Uphezulu +
Umthelela wokushukuma komhlaba, ukuqhumisa emoyeni namatshe andizayo ngenxa yemisebenzi yokuqhumisa	Uphezulu -	Uphansi -

Umthelela Ongase Ube Khona	Awuncishisiwe	Uncishisiwe
Umnotho womphakathi		
Umthelela wokushintsha izinqubo zokulima, izinketho zemakethe kanye nemithombo yomsoco	Uphezulu kakhulu -	Uphakathi nendawo -
Ukuchayeka esifweni se-vector-bone ne-zoonotic	Uphakathi nendawo -	Uphansi -
Ushintsho ekufinyeleleni ezokwelapha	Uphezulu kakhulu -	Uphezulu kakhulu +
Ukulahleka kwezindawo zamagugu amasiko	Uphezulu kakhulu -	Uphakathi nendawo -
Ukuthuthwa kwamathuna	Uphezulu kakhulu -	Uphezulu -
Umthelela kubasebenzisi bomgwaqo kanye nokuphepha emgwaqweni	Uphezulu kuya Phakathi Nendawo -	Uphakathi Nendawo kuya Phezulu +
Ukufika kwabantu abazosebenza / ukutheleka kwabafuna imisebenzi	Uphakathi nendawo -	Uphansi -
Ukuthuthukiswa komphakathi nendlela yokuphila	Uphakathi nendawo +	Uphezulu +
Ibhizinisi - imithelela kwezokuvakasha	Uphakathi nendawo -	Uphakathi nendawo -
Umthelela emnothweni wasendaweni nowasesifundeni	Uphezulu +	Uphezulu +

Isigaba Sokuyeka Ukusebenza

Lapho kuyekwa ukusebenza futhi kuvalwa (**Error! Reference source not found.**) i-Jindal MIOP imithelela eminingi izophela, futhi izinga l emithelela lizoba phansi kuya kwenganakeki (izoba mbalwa imithelela ephakathi nendawo) uma nje ingqalazinda iyekiswa futhi ivuselelwe ngokuvumelana Nohlelo Lokuvala olugunyaziwe kanye Nohlelo Lokuvuselela oluhambisana nalo. Imithelela yokubukeka ehlobene ne-Jindal MIOP izoba yingxenywe yendawo unomphela kodwa ingancishiswa ngezinga elithile ngokuvuselelwa. Umthelela obalulekile lapho kuyekwa ukusebenza kuzoba umthelela ongase ube mubi endaweni ngenxa yokulahleka kwemisebenzi kanye nezinzuzo ezihlobene nokusebenza kwe-Jindal MIOP emnothweni wasendaweni. Nokho, uma kulawulwa kahle futhi kuhlelwa kahle ngaphambi kwesikhathi, kusetshenziswa Uhlelo Lokuvala imayini, imithelela engemihle emiphakathini yasendaweni kanye namadolobha asondele ingancishiswa kakhulu.

IThebula 3 Isifinyezo Semithelela Yesigaba Sokuyeka Ukusebenza Nokuvala Etholakele Kanye Nezilinganiso Zangaphambi Nangemva Kokunciphisa

Umthelela Ongase Ube Khona	Awuncishisiwe	Uncishisiwe
Imvelo		
Umthelela kwikhwalthi yamanzi angaphansi komhlaba	Uphansi -	Uyaphawuleka -
Umthelela kwikhwalthi yamanzi angaphansi komhlaba	Uyaphawuleka	Uyaphawuleka
Ikhwalithi enciphile yamanzi aphezulu	Uphakathi nendawo -	Uphansi -
Ukushintshwa kwezindlela zokuthulula nokugeleza kwamanzi	Uphakathi nendawo -	Uphansi -
Umthelela wezikhukhula	Uphakathi nendawo -	Uphansi -
Uqondile - Umthelela ezitshalweni, emiphakathini kanye nemithelela ezimisweni zemvelo ezisengozini kanye nokuvikelwa kwezinto eziphilayo	Uphakathi nendawo -	Uphansi -
Awuqondile - Umthelela ezitshalweni, emiphakathini kanye nemithelela ezimisweni zemvelo ezisengozini kanye nokuvikelwa kwezinto eziphilayo	Uphezulu -	Uphakathi nendawo -
Uqondile - Umthelela ohlotsheni lwezinto eziphilayo kanye nokuvikelwa kwalezo ezisengozini	Uphakathi nendawo -	Uphansi -
Awuqondile - Umthelela ohlotsheni lwezinto eziphilayo kanye nokuvikelwa kwalezo ezisengozini	Uphakathi nendawo -	Uphansi -
Uqondile - Umthelela ezinqubweni zemvelo zasendaweni nezasesifundeni	Uphakathi nendawo -	Uphakathi nendawo -
Awuqondile - Umthelela ezinqubweni zemvelo zasendaweni nezasesifundeni	Uphakathi nendawo -	Uphansi -
Ukulahleka okungokoqobo noma ukushintsha kwendawo ehlala amanzi	Uphakathi nendawo -	Uphakathi nendawo -
Ukushintsha kwezinqubo zamanzi nomumo womhlaba	Uphakathi nendawo -	Uphansi -

Umthelela Ongase Ube Khona	Awuncishisiwe	Uncishisiwe
Umthelela ezindaweni ezimanzi nasezintweni eziphila emanzini ngenxa yokuncipha kwekhwalithi yamanzi	Uphakathi nendawo -	Uphansi -
Umthelela ekuxhumaneni kwemvelo kanye/noma ukuphazamiseka kwemvelo	Kuphakathi nendawo- Kuphansi -	Uphansi -
Umthelela kwikhwalithi yomoya ohlanzekile	Uphakathi nendawo -	Uphansi -
Umthelela emazingeni omsindo	Uphansi -	Uphansi kakhulu -
Umthelela ekushintsheni kokusetshenziswa komhlaba, ukusuka ekulimeni kuye ekumbeni	Uphezulu -	Uphansi -
Umthelela wokulahleka kanye/noma ukuncipha kwamandla amanje omhlaba	Uphakathi nendawo -	Uphansi -
Umthelela wokwanda kokuguguleka komhlaba	Uphezulu -	Uphakathi nendawo -
Umthelela wokucinana kwenhlabathi	Uphezulu -	Uphakathi nendawo -
Umthelela wokungcola kwenhlabathi	Uphezulu -	Uphansi -
Umthelela wokubukeka kwendawo	Uphezulu -	Uphakathi nendawo -
Umthelela wephrojekthi ekushintsheni kwesimo sezulu	Akuhlolwanga	
Umnotho womphakathi		
Umthelela wokushintsha izinqubo zokulima, izinketho zemakethe kanye nemithombo yomsoco	Uphezulu kakhulu -	Uphakathi nendawo -
Umthelela kubasebenzisi bomgwaqo kanye nokuphepha emgwaqweni	Uphansi -	Uphansi -
Ukufika kwabantu abazosebenza / ukutheleka kwabafuna imisebenzi	Uphansi -	Uphansi Kakhulu -
Ukuthuthukiswa komphakathi nendlela yokuphila	Uphakathi nendawo -	Uphansi -
Ibhizinisi - imithelela kwezokuvakasha	Uphezulu -	Uphakathi nendawo -
Umthelela emnothweni wasendaweni nowasesifundeni	Uphakathi nendawo -	Uphansi -

UHLELO LOKULAWULWA KWEMVELO

Ngokusekelwe emiphumeleni Yokuhlolwa Kwemithelela kanye, nalapho kusebenza khona, izincomo zongoti, ukulawulwa okuhlongozwayo kwezinjongo nemiphumela ye-Jindal MIOP ehlongozwayo ku-EMPr. Izinjongo eziqondile zezemvelo kanye nezinyathelo zokulawula, ukunciphisa noma ukuvimbela imithelela engase ibe khona zichazwe njengezinciphisa imithelela engemihle noma njengezithuthukisa imithelela emihle phakathi nazo zonke izigaba zokuhlola, ukuklama, ukwakha, ukusebenza nokuyeka ukusebenza.

ISIPHETHO NEZIPHAKAMISO

Inqubo ephelile Yokuhlola Imvelo neye-EIA yenziwe yinkampani ezimele, i-SLR Consulting (Ningizimu Afrika) (Pty) Ltd isizwa ongoti njengoba kuchaziwe ngaphambili.

Okutholakele kubonisa ukuthi nakuba kunemithelela emibi kanye nezinzuzo ze-Jindal MIOP, ukucabanga ngokucophelela kuyadingeka ezicini eziningana eziyinhloko kuhlalanise ukulawulwa kwemithelela ezintweni eziphilayo (kanye nezinhlelo ezihmabisana nakho), imithelela kwikhwalithi yomoya nekhwalithi yamanzi (ikakhulukazi ngokuphathelele nezindawo okulinywa kuzo izinto ezidayiswayo), isilinganiso samanzi ngokuphathelele nokuncipha kwamanzi angaphansi komhlaba, izinkinga zokutholakala kwamanzi, ukuthuthukiswa kwezinzuzo zasemphakathini, kanye nohlelo olufanele lokuvala.

Lokho kusho ukuthi, okutholakele ekuhlolweni komthelela kubonisa ukuthi ingase ibe khona imithelela ebalulekile kuzo zonke izigaba zephrojekthi, nokho, uma i-EMPr isetshenziswa kahle, kuhlelwe ngokucophelela futhi kuxoxwe ngokuqhubekayo nabo bonke ababambiqhaza kanye nabo bonke abanye abathintekayo, ngeke sibe khona isizathu semvelo, sezenhlobo noma somnotho esibangela ukuba iphrojekthi ingaqhubeki.

