

Legend

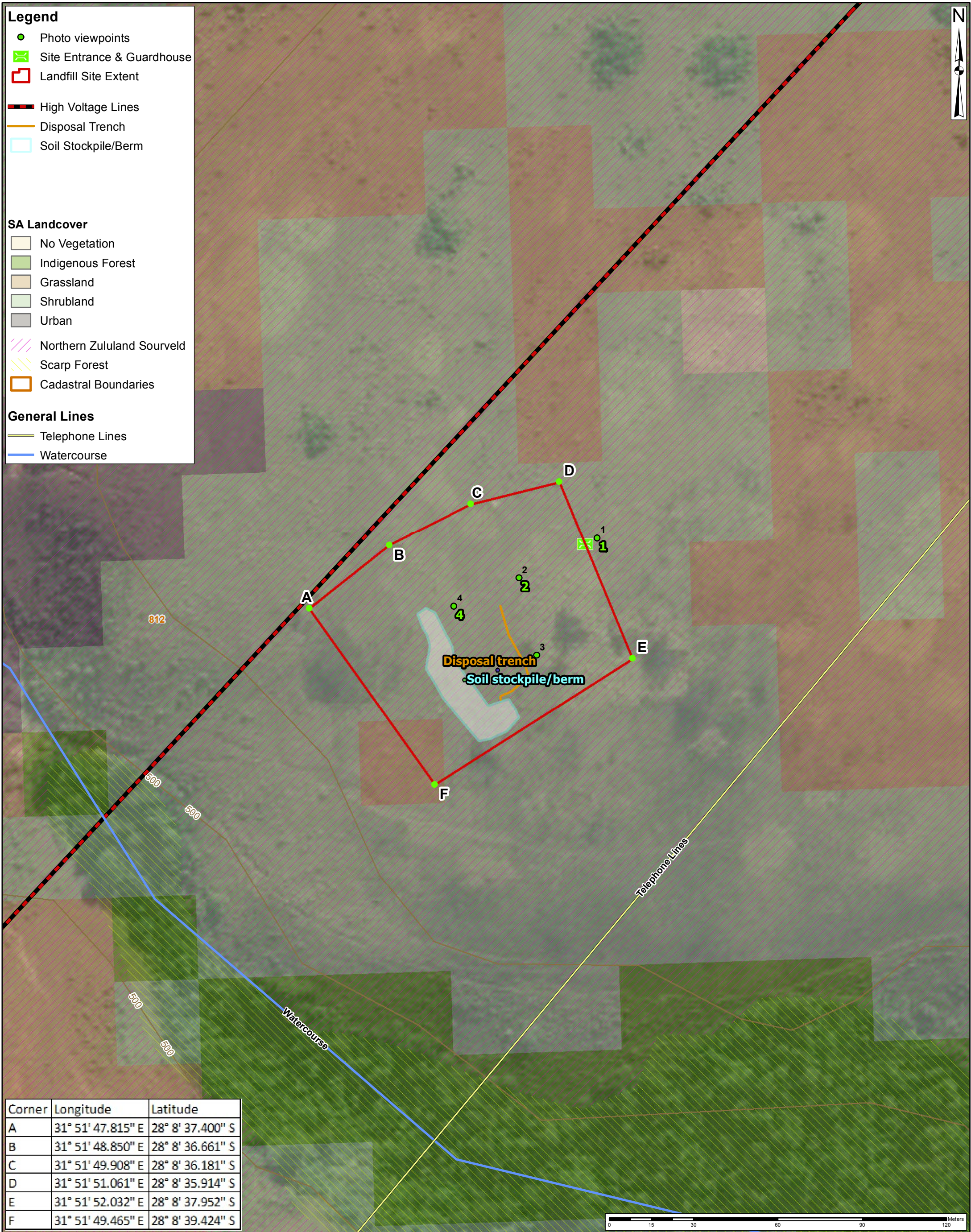
- Photo viewpoints
- 🚧 Site Entrance & Guardhouse
- 📏 Landfill Site Extent
- ⚡ High Voltage Lines
- 🟡 Disposal Trench
- 🟦 Soil Stockpile/Berm

SA Landcover

- 🟡 No Vegetation
- 🟢 Indigenous Forest
- 🟤 Grassland
- 🟩 Shrubland
- 🟠 Urban
- 🟪 Northern Zululand Sourveld
- 🟨 Scarp Forest
- 🟭 Cadastral Boundaries

General Lines

- 🟫 Telephone Lines
- 🟩 Watercourse



Corner	Longitude	Latitude
A	31° 51' 47.815" E	28° 8' 37.400" S
B	31° 51' 48.850" E	28° 8' 36.661" S
C	31° 51' 49.908" E	28° 8' 36.181" S
D	31° 51' 51.061" E	28° 8' 35.914" S
E	31° 51' 52.032" E	28° 8' 37.952" S
F	31° 51' 49.465" E	28° 8' 39.424" S

Project Title: DEA Waste Licenses 2015		Scale 1:1 200 <small>(When page size is: A3 portrait)</small>	Figure
Map Title: Site Plan of Hlabisa Landfill		Projection: Transverse Mercator Datum: Hartebeesthoek 1994 Central Meridian: 31.0	CD:NGI Source: Esri, DigitalGlobe, GeoEye, i-cubed, Earthstar Geographics, CNES/Airbus DS, USDA, USGS, AEX, Getmapping, Aerogrid, IGN, IGP, swisstopo, and the GIS User Community © OpenStreetMap & contributors NFEPA, SANBI, 2011. Vegetation, SANBI 2012. CBA, SANBI BGIS. Land Cover, GeoTerraImage (GTI) 2013.
<small>Whilst every care has been taken in compiling the information on this map, AECOM cannot accept responsibility for any inaccuracies. © Copyright</small>		Compiled By: GA Maree GIS QC By: TBD Approved By: J Hayes Date Saved: 2015/11/26 Project Number: 60437185 Map Ref: EnviroConsolidated.mxd Revision: 00	
		DDP Ref.: 9 of 13	