



Client ref.: 14/12/16/3/3/2/900 & 14/12/16/3/3/1/1591  
WSP ref.: 41103473

19 May 2022

Dear Stakeholder

**Subject: NOTICE OF THE PROPOSED AMENDMENT OF THE ENVIRONMENTAL AUTHORISATION ISSUED 23 NOVEMBER 2016 FOR THE 140MW BRANDVALLEY WIND ENERGY FACILITY (REF: 14/12/16/3/3/2/900) AND THE AMENDED ENVIRONMENTAL MANAGEMENT PROGRAMME AND FINAL LAYOUT FOR THE BRANDVALLEY WIND ENERGY FACILITY AND ASSOCIATED 132KV POWERLINE (REF: 14/12/16/3/3/2/900 and 14/12/16/3/3/1/1591)**

**Notice is given in terms of Regulation 32 (GNR 982) of the Environmental Impact Assessment (EIA) Regulations, 2014 as amended published under section 24 and 24D of the National Environmental Management Act (No. 107 of 1998) (NEMA) (as amended) for submission of applications for an Amendment in terms of a Part 2 Amendment Process described in Regulation 31.**

**In addition, notice is given in terms of Condition 13 and 16 of the authorised Environmental Authorisations (EAs) that the Environmental Management Programmes (EMPr) for the Brandvalley Wind Energy Facility (WEF) and the Brandvalley 132kV Powerline, respectively, have been amended.**

## **PART 2 AMENDMENT PROCESS**

In 2016, the Department of Environmental Affairs (DEA) (now known as the Department of Forestry, Fisheries and the Environment – DFFE) issued an Environmental Authorisation (EA) (Ref No: 14/12/16/3/3/2/900) approving an up to 140MW WEF, subsequently an amendment to this EA was issued on 14 February 2019 (Ref No: 14/12/16/3/3/1/900/AM1). The proponent, Brandvalley Wind Farm (Pty) Ltd (Brandvalley), now wishes to further amend the above-mentioned EA to undertake substantive amendments e.g. increase the hub height and rotor diameter to 125 m and 180 m respectively, increase the generation capacity of the individual authorised turbines, as well as undertake administrative amendments (the entire scope of the amendment request is detailed in the amendment report). None of amendments trigger new listed activities in terms of GNR 983, 984 and 985 of the EIA Regulations, 2014 (as amended). However, the proposed amendments will result in a change in scope of the valid EA. As such, a Regulation 31 Amendment Process in terms the EIA Regulations (GNR 982) of the EIA Regulations, 2014 as amended is applicable. The authorised Brandvalley WEF is a confirmed Round 5 Preferred Bidder project and is located within the Laingsburg Local Municipality in the Central Karoo District Municipality near Matjiesfontein in the Western Cape Province. The project is also situated within the Komsberg Renewable Energy Development Zone (REDZ) promulgated in GNR 114 of 2018, and includes the following properties:

- The Remainder and Portion 1 of Barendskraal 76
- The Remainder and Portion 1 of Brandvalley 75
- The Remainder and Portion 3 of Fortuin 74

Building C  
Knightsbridge, 33 Sloane Street  
Bryanston, 2191  
South Africa

T: +27 11 361 1392  
F: +27 11 361 1381  
wsp.com



- The Remainder of Kabeltouw 160
- The Remainder and Portion 1 of Muishond Rivier 161
- Portion 1 of Fortuin 74 (Ou Mure)
- Rietfontein 197

### **EMPR AMENDMENTS**

The EMPRs submitted as part of the Basic Assessment Reports (BARs) for the Brandvalley WEF and Brandvalley 132kV Powerline projects were not approved. In terms of Condition 16 of both the authorised EAs 14/12/16/3/3/2/900 and 14/12/16/3/3/1/1591, the EMPRs are to be amended to include measures dictated by the final layout maps, micro-siting and the provisions of the EAs. The amended EMPRs and Final Layouts are to be made available to interested and affected parties (I&APs) for comment.

### **REGISTRATION**

WSP Group Africa (Pty) Ltd (WSP) has been appointed as the independent and suitably qualified Environmental Assessment Practitioner (EAP) by Brandvalley, to manage and undertake the Part 2 Amendment process and to amend the EMPRs. Parties wishing to formally register as interested and affected parties in order to receive more information and/ or raise their comment(s) on the project amendments, are requested to forward their full contact details to the EAP and disclose their direct business, financial, personal or other interest in the project. Any comments on the proposed project may be submitted to the EAP via the details provided below. Registered interested and affected parties will be forwarded all future project related correspondence.

### **DRAFT AMENDMENT REPORT AND EMPR REVIEW PERIOD**

The Draft Amendment Report and amended EMPRs and Final Layouts are available from WSP on request and at the venues below for public review and comment for 30 days from 19 May 2022 to 21 June 2022:

- Matjiesfontein - Matjiesfontein Community Centre (Tel: 023 551 1019);
- Laingsburg - Laingsburg Library (Van Riebeeck street, Tel: 023 551 1019); and
- Website - <https://www.wsp.com/en-ZA/services/public-documents>

Kindly ensure that all comments on the proposed project or requests to be registered as an Interested and Affected Party are submitted to the contact details provided below, by 21 June 2022. Should you have any queries/comments, please do not hesitate to contact the EAP.

The contact details of the EAP:

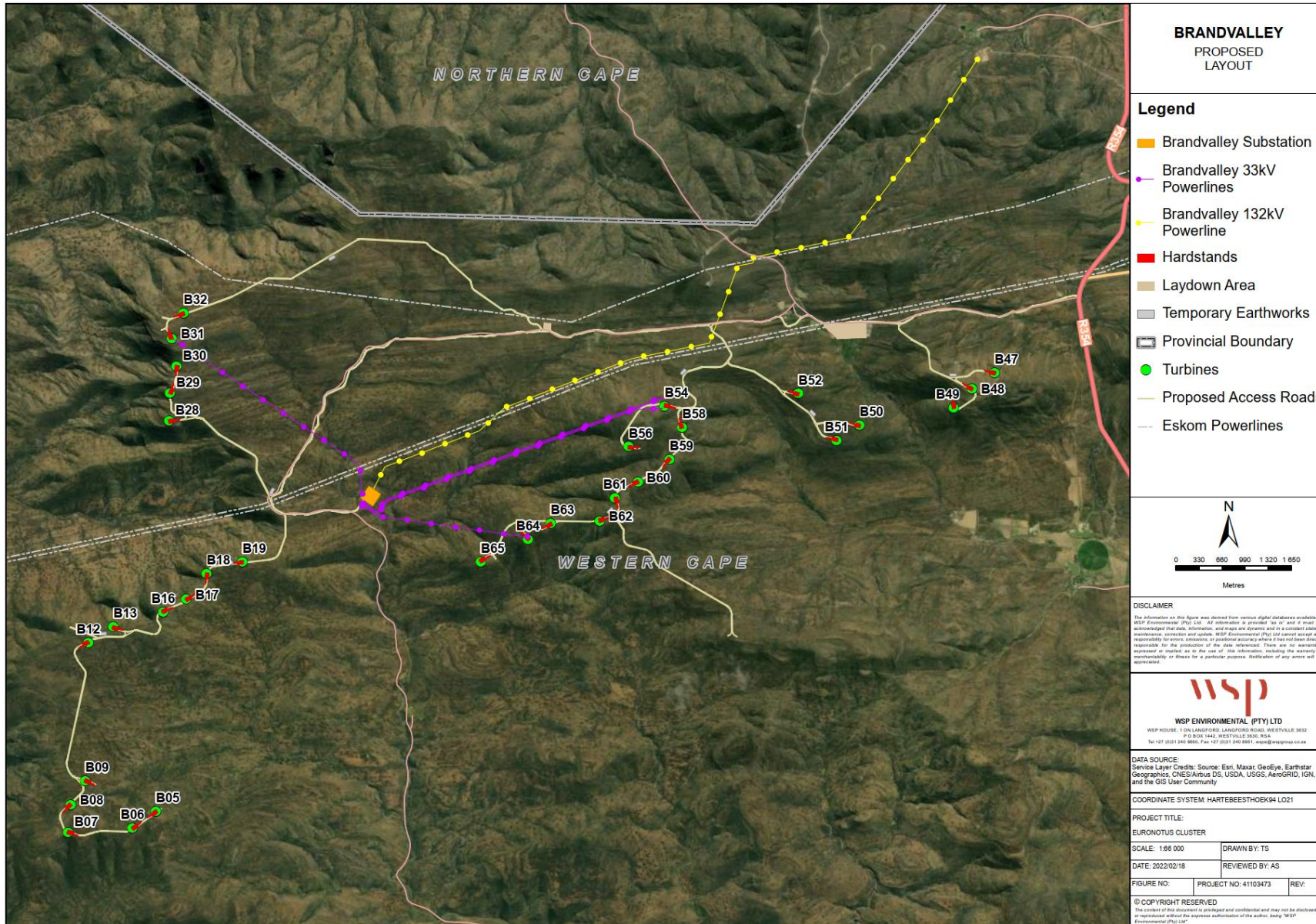
Babalwa Mqokeli

(T) 031 240 8804

(F) 031 240 8801

(E) [Babalwa.Mqokeli@wsp.com](mailto:Babalwa.Mqokeli@wsp.com)

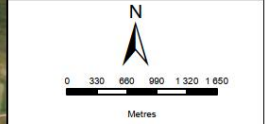
(A) PO Box 98867, Sloane Park, 2152.



**BRANDVALLEY**  
PROPOSED  
LAYOUT

**Legend**

- Brandvalley Substation
- Brandvalley 33kV Powerlines
- Brandvalley 132kV Powerline
- Hardstands
- Laydown Area
- Temporary Earthworks
- Provincial Boundary
- Turbines
- Proposed Access Roads
- Eskom Powerlines



**DISCLAIMER**  
The information on this figure was derived from various digital databases available to WSP Environmental (Pty) Ltd. All information is provided 'as is' and is made for informational purposes only. WSP Environmental (Pty) Ltd cannot accept any responsibility for errors, omissions, or positional accuracy where it has not been directly responsible for the production of the data referenced. There are no warranties, expressed or implied, as to the use of this information, including the warranty of merchantability or fitness for a particular purpose. Reproduction of any errors will be corrected.

**WSP ENVIRONMENTAL (PTY) LTD**  
WSP HOUSE, 1 ON LANGFORDS, LANGFORD ROAD, WESTVILLE 3632  
P.O. BOX 1442, WESTVILLE 3630, RSA  
Tel: +27 (0)11 240 8800, Fax: +27 (0)11 240 8851, email: info@wspgroup.co.za

**DATA SOURCE:**  
Service Layer Credits: Source: Esri, Maxar, GeoEye, Earthstar Geographics, CNES/Airbus DS, USDA, USGS, AeroGRID, IGN, and the GIS User Community

**COORDINATE SYSTEM:** HARTBEESTHOEK#4 LO21

**PROJECT TITLE:**  
EURONOTUS CLUSTER

**SCALE:** 1:88 000

**DRAWN BY:** TS

**DATE:** 2022/02/18

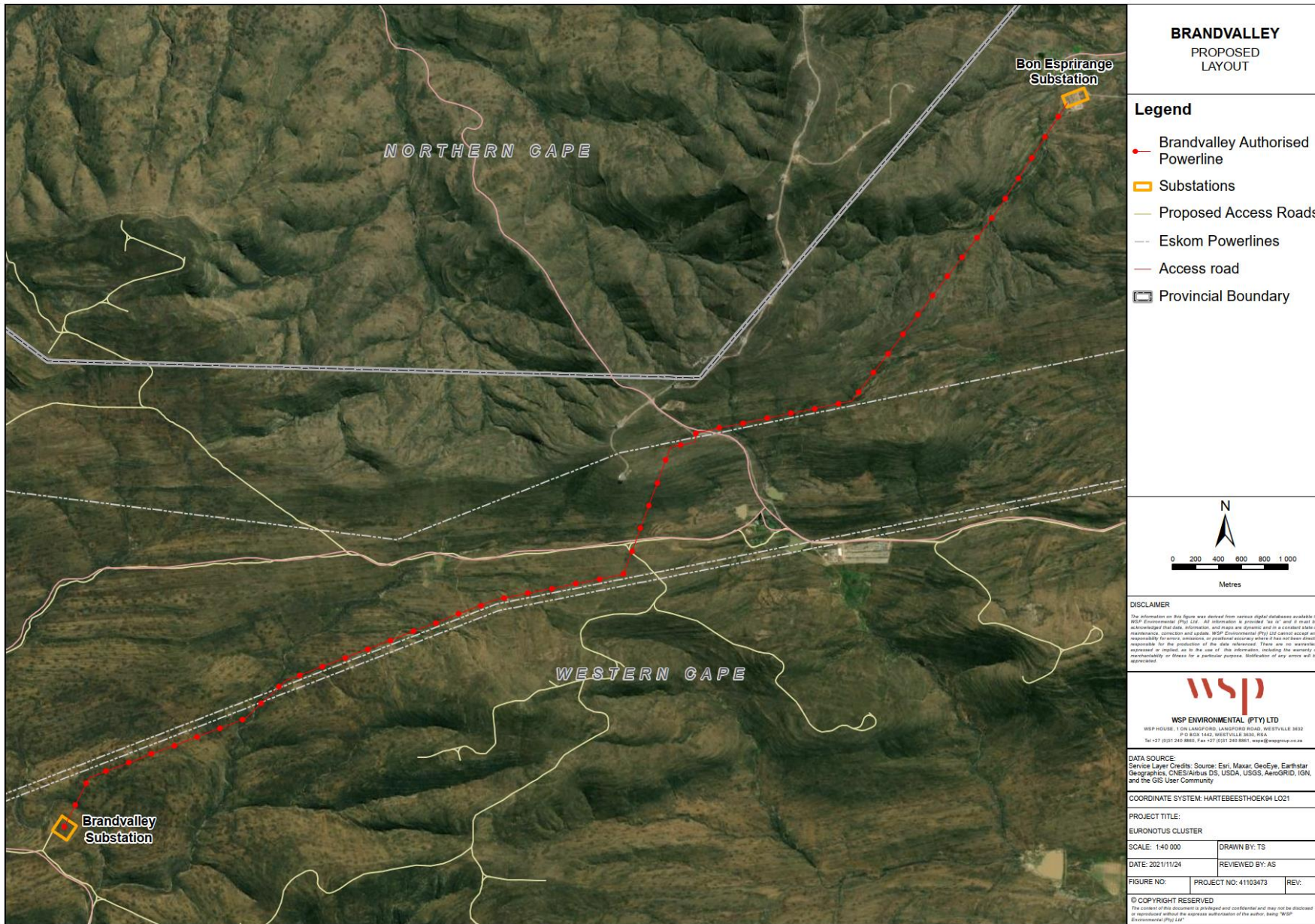
**REVIEWED BY:** AS

**FIGURE NO:**

**PROJECT NO:** 41103473

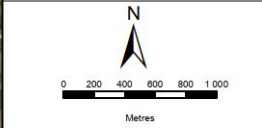
**REV:**

**© COPYRIGHT RESERVED**  
The content of this document is proprietary and confidential and may not be disclosed or reproduced without the express authorisation of the author, being "WSP Environmental (Pty) Ltd".



**BRANDVALLEY  
PROPOSED  
LAYOUT**

- Legend**
- Brandvalley Authorised Powerline
  - Substations
  - Proposed Access Roads
  - Eskom Powerlines
  - Access road
  - Provincial Boundary



**DISCLAIMER**  
The information on this figure was derived from various digital databases available to WSP Environmental (PTY) Ltd. All information is provided 'as is' and it must be acknowledged that data, information, and maps are dynamic and in a constant state of maintenance, correction and update. WSP Environmental (PTY) Ltd cannot accept any responsibility for errors, omissions, or probable inaccuracies that may arise from their direct or indirect use of the information. There are no warranties, expressed or implied, as to the use of the information, including the warranty of merchantability or fitness for a particular purpose. Notification of any errors will be appreciated.

**wsp**  
**WSP ENVIRONMENTAL (PTY) LTD**  
WSP HOUSE, 1 ON LANGFORD, LANGFORD ROAD, WESTVILLE 3612  
P.O. BOX 1442, WESTVILLE 3610, RSA  
Tel: +27 (0)11 240 8800, Fax: +27 (0)11 240 8881, [www@wspgroup.co.za](mailto:www@wspgroup.co.za)

**DATA SOURCE:**  
Service Layer Credits: Source: Esri, Maxar, GeoEye, Earthstar Geographics, CNES/Airbus DS, USDA, USGS, AeroGRID, IGN, and the GIS User Community

**COORDINATE SYSTEM:** HARTEBEESTHOEK4 LO21

**PROJECT TITLE:**  
EURONOTUS CLUSTER

**SCALE:** 1:40 000      **DRAWN BY:** TS

**DATE:** 2021/11/24      **REVIEWED BY:** AS

<b>FIGURE NO:</b>	<b>PROJECT NO:</b> 41103473	<b>REV:</b>
-------------------	-----------------------------	-------------

**© COPYRIGHT RESERVED**  
The content of this document is privileged and confidential and may not be disclosed or reproduced without the express authorization of the author, being "WSP Environmental (PTY) Ltd".



Client ref.: 14/12/16/3/3/2/900 & 14/12/16/3/3/1/1591  
WSP ref.: 41103473

19 Mei 2022

Dear Stakeholder

**Subject: KENNISGEWING VAN DIE VOORGESTELDE WYSIGING VAN DIE OMGEWINGSMAGTIGING UITGEREIK 23 NOVEMBER 2016 VIR DIE 140MW BRANDVALLEY WINDENERGIE FASILITEIT (VERW: 14/12/16/3/3/2/900) EN DIE GEWYSIGDE OMGEWINGSBESTUURSPROGRAM EN FINALE UITLEG VIR DIE BRANDVALLEY WINDENERGIE FASILITEIT EN GEASSOSIEERDE 132KV KRAGLYN (VERW: 14/12/16/3/3/2/900 and 14/12/16/3/3/1/1591)**

**Kennis word gegee ingevolge Regulasie 32 (GNR 982) van die Omgewingsimpakbepaling (OIB) Regulasies, 2014 soos gewysig gepubliseer kragtens artikel 24 en 24D van die Nasionale Omgewingsbestuurswet (No. 107 van 1998) (NEMA) (soos gewysig) vir die indiening van wysigings aansoeke ingevolge Regulasie 31.**

**Daarby word kennis gegee in terme van Voorwaarde 13 en 16 van die gemagtigde Omgewingsmagtigings (OM's) dat die Omgewingsbestuursprogram (OBP) vir die Brandvalley Windenergiefasiliteit (WEF) en die Brandvalley 132kV Kraglyn, onderskeidelik, gewysig is.**

## **DEEL 2 WYSIGINGSPROSES**

In 2016 het die Departement van Omgewingsake (DEA) (nou bekend as die Departement van Bosbou, Visserye en die Omgewing – DFFE) 'n Omgewingsmagtiging (EA) uitgereik (Verw. No: 14/12/16/3/3/2/ 900) vir 'n 140MW WEF, en daarna is 'n wysiging aan hierdie OM uitgereik op 14 Februarie 2019 (Verw. No: 14/12/16/3/3/1/900/AM1). Die proponent, Brandvalley Wind Farm (Edms) Bpk (Brandvalley), wil die bogenoemde OM verder wysig om wesenlike wysigings te onderneem bv. verhoging van die naafhoogte en rotordeersnee tot onderskeidelik 125 m en 180 m, vermeerdering van die opwekkingskapasiteit van die individuele gemagtigde turbines, asook administratiewe wysigings (die hele omvang van die wysigingsversoek word in die wysigingsverslag uiteengesit). Geen van die wysigings veroorsaak nuwe gelyste aktiwiteite ingevolge GNR 983, 984 en 985 van die OIB-regulasies, 2014 (soos gewysig) nie. Die voorgestelde wysigings sal egter lei tot 'n verandering in omvang van die geldige OM. Sodanig is 'n Regulasie 31-wysigingsproses ingevolge die OIB-regulasies (GNR 982) van die OIB-regulasies, 2014 soos gewysig van toepassing. Die gemagtigde Brandvalley WEF is 'n bevestigde Ronde 5 Voorkeurbiëer-projek en is geleë binne die Laingsburg Plaaslike Munisipaliteit in die Sentraal Karoo Distriksmunisipaliteit naby Matjiesfontein in die Wes-Kaap Provinsie. Die projek is ook geleë binne die Komsberg Hernubare Energie-ontwikkelingsone (REDZ) wat in GNR 114 van 2018 afgekondig is, en sluit die volgende eiendomme in:

- Die Restant en Gedeelte 1 van Barendskraal 76
- Die Resant en Gedeelte 1 van Brandvalley 75
- Die Restant en Gedeelte 3 van Fortuin 74
- Die Resant van Kabeltouw 160

Building C  
Knightsbridge, 33 Sloane Street  
Bryanston, 2191  
South Africa

T: +27 11 361 1392  
F: +27 11 361 1381  
wsp.com

- The Resant en Gedeelte 1 van Muishond Rivier 161
- Gedeelte 1 van Fortuin 74 (Ou Mure)
- Rietfontein 197

### **OBP WYSIGINGS**

Die OBP'e wat as deel van die Basiese Assesseringsverslae vir die Brandvalley WEF- en Brandvalley 132kV-kraglynprojekte ingedien is, is nie goedgekeur nie. Ingevolge voorwaarde 13 en 16 van die OM'e 14/12/16/3/3/2/900 en 14/12/16/3/3/1/1591 onderskeidelik, moet die OBPs gewysig word om maatreëls in te sluit soos gedikteer in die finale uitlegkaart, mikro-sitting en die bepaling van die OMs. Die gewysigde OBP'e en Finale uitlegte moet aan belanghebbende en geaffekteerde partye (B&GP's) beskikbaar gestel word vir kommentaar.

### **REGISTRASIE**

WSP Group Africa (Edms) Bpk (WSP) is deur Brandvalley as die onafhanklike en toepaslik gekwalifiseerde Omgewingsbeoordelingspraktisyn (OBP) aangestel om die Deel 2 Wysigingsproses te bestuur en te onderneem en om die OBPs te wysig. Partye wat formeel as belanghebbende en geaffekteerde partye wil registreer om meer inligting te ontvang en/of hul kommentaar(s) op die projekwysigings te lewer, word versoek om hul volledige kontakbesonderhede aan die WHP te stuur en hul direkte besigheid, finansiële, persoonlike of ander belangstelling in die projek. Enige kommentaar oor die voorgestelde projek kan by die WHP ingedien word via die besonderhede hieronder verskaf. Geregistreeerde belangstellende en geaffekteerde partye sal alle toekomstige projekverwante korrespondensie aangestuur word.

### **KONSEP-WYSIGINGSVERSLAG EN OBP-OORSIGTYDPERK**

Die Konsepwysigingsverslag, gewysigde OBPs en Finale uitlegte is op aanvraag vanaf WSP en by die lokale hieronder beskikbaar vir publieke hersiening en kommentaar vir 30 dae vanaf 19 Mei 2022 tot 21 Junie 2022:

- Matjiesfontein - Matjiesfontein Gemeenskapsentrum (Tel: 023 551 1019);
- Laingsburg - Laingsburg Biblioteek (Van Riebeeckstraat, Tel: 023 551 1019); en
- Webwerf - <https://www.wsp.com/en-ZA/services/public-documents>

Maak asseblief seker dat alle kommentaar oor die voorgestelde projek of versoeke om geregistreeer te word as 'n Belanghebbende en Geaffekteerde Party ingedien word by die kontakbesonderhede hieronder verskaf, teen 21 Junie 2022. Indien u enige navrae/opmerkings het, moet asseblief nie huiwer om die OBP te kontak nie.

Die kontakbesonderhede van die OBP:

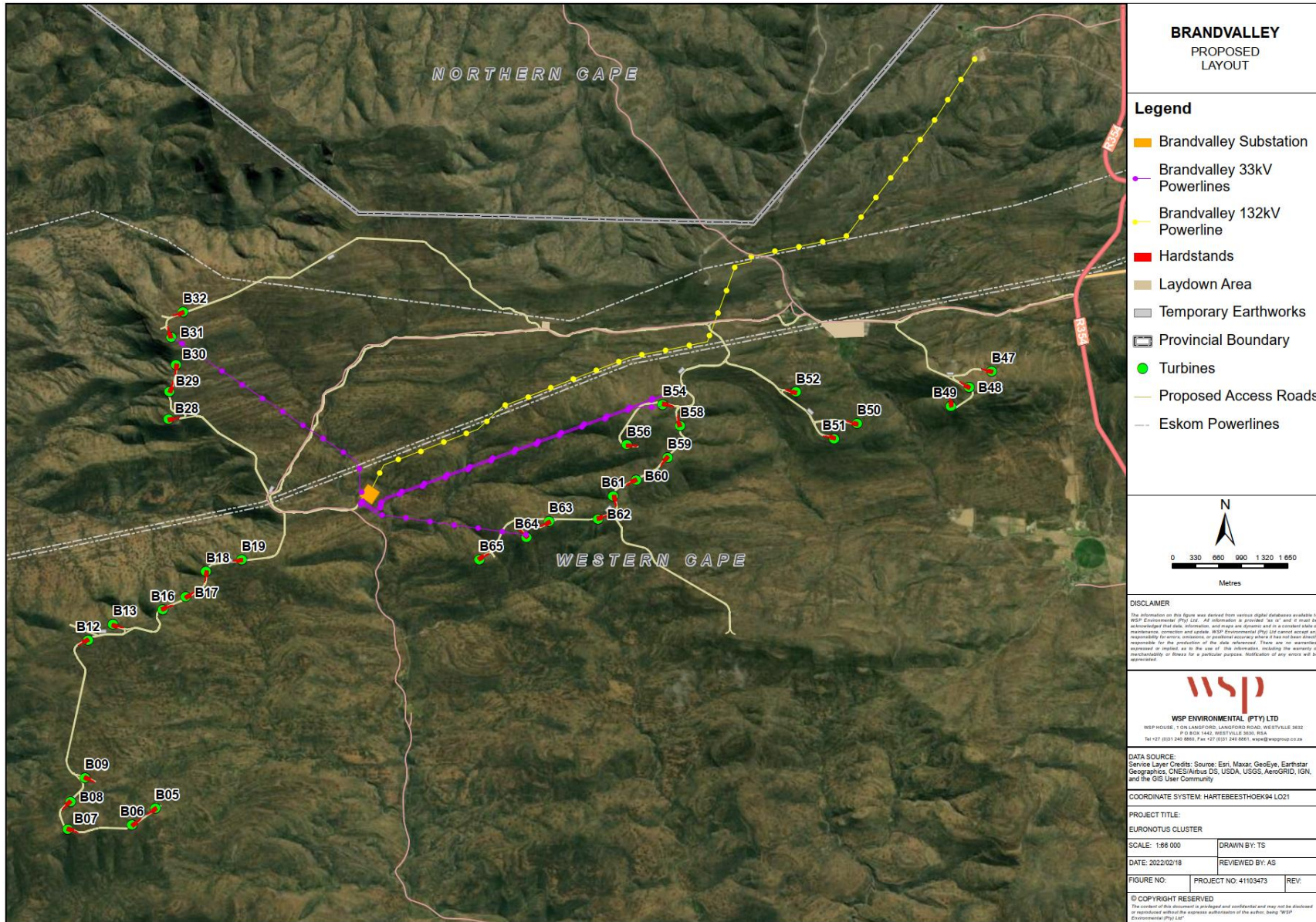
Babalwa Mqokeli

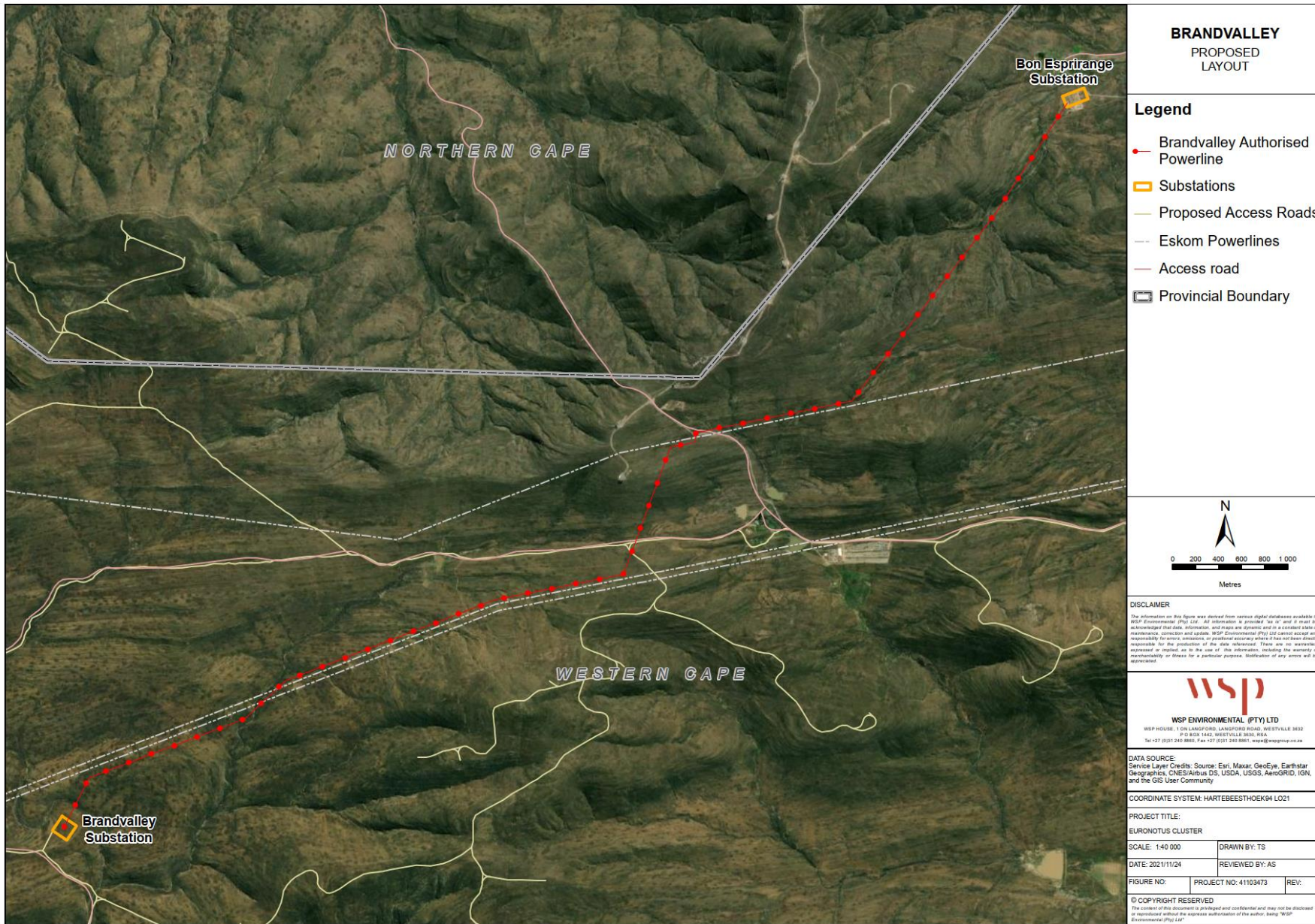
(T) 031 240 8804

(V) 031 240 8801

(E) [Babalwa.Mqokeli@wsp.com](mailto:Babalwa.Mqokeli@wsp.com)

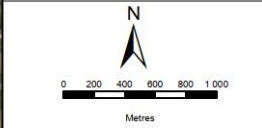
(A) Posbus 98867, Sloane Park, 2152.





**BRANDVALLEY  
PROPOSED  
LAYOUT**

- Legend**
- Brandvalley Authorised Powerline
  - Substations
  - Proposed Access Roads
  - Eskom Powerlines
  - Access road
  - Provincial Boundary



**DISCLAIMER**  
The information on this figure was derived from various digital databases available to WSP Environmental (PTY) LTD. All information is provided 'as is' and it must be acknowledged that data, information, and maps are dynamic and in a constant state of maintenance, correction and update. WSP Environmental (PTY) LTD cannot accept any responsibility for errors, omissions, or probable inaccuracies that may arise from their direct or indirect use of the information. There are no warranties, expressed or implied, as to the use of the information, including the warranty of merchantability or fitness for a particular purpose. Notification of any errors will be appreciated.

**wsp**  
**WSP ENVIRONMENTAL (PTY) LTD**  
WSP HOUSE, 1 ON LANGFORD, LANGFORD ROAD, WESTVILLE 3612  
P.O. BOX 1442, WESTVILLE 3610, RSA  
Tel: +27 (0)11 240 8800, Fax: +27 (0)11 240 8881, [www@wspgroup.co.za](mailto:www@wspgroup.co.za)

**DATA SOURCE:**  
Service Layer Credits: Source: Esri, Maxar, GeoEye, Earthstar Geographics, CNES/Airbus DS, USDA, USGS, AeroGRID, IGN, and the GIS User Community

**COORDINATE SYSTEM:** HARTEBEESTHOEK4 LO21

**PROJECT TITLE:**  
EURONOTUS CLUSTER

**SCALE:** 1:40 000      **DRAWN BY:** TS

**DATE:** 2021/11/24      **REVIEWED BY:** AS

<b>FIGURE NO:</b>	<b>PROJECT NO:</b> 41103473	<b>REV:</b>
-------------------	-----------------------------	-------------

**© COPYRIGHT RESERVED**  
The content of this document is privileged and confidential and may not be disclosed or reproduced without the express authorization of the author, being "WSP Environmental (PTY) LTD".