



Client ref.: 14/12/16/3/3/1/1977/AM1
WSP ref.: 41103473_RKP2

09 December 2021

Dear Stakeholder

Subject: NOTICE OF THE PROPOSED AMENDMENT OF THE ENVIRONMENTAL AUTHORISATION ISSUED 16 SEPTEMBER 2019 FOR THE RIETKLOOF WIND ENERGY FACILITY (REF: 14/12/16/3/3/1/1977/AM1) AND THE AMENDED ENVIRONMENTAL MANAGEMENT PROGRAMME AND FINAL LAYOUT FOR THE RIETKLOOF WIND ENERGY FACILITY AND ASSOCIATED 132KV POWERLINE (REF: 14/12/16/3/3/1/1977/AM1 and 14/12/16/3/3/1/1590)

Notice is given in terms of Regulation 32 (GNR 982) of the Environmental Impact Assessment (EIA) Regulations, 2014 as amended published under section 24 and 24D of the National Environmental Management Act (No. 107 of 1998) (NEMA) (as amended) for submission of applications for an Amendment in terms of a Part 2 Amendment Process described in Regulation 31.

In addition, notice is given in terms of Condition 13 and 16 of the authorised Environmental Authorisations (EAs) that the Environmental Management Programmes (EMPr) for the Rietkloof Wind Energy Facility (WEF) and the Rietkloof 132kV Powerline, respectively, have been amended

PART 2 AMENDMENT PROCESS

In 2019, the Department of Environmental Affairs (DEA) (now known as the Department of Forestry, Fisheries and the Environment – DFFE) issued an Environmental Authorisation (EA) (Ref No: 14/12/16/3/3/1/1977/AM1) approving an up to 183MW WEF. The proponent, Rietkloof Wind Farm (Pty) Ltd (Rietkloof), now wishes to amend the above-mentioned EA to undertake substantive amendments e.g. increase the hub height and rotor diameter to 125 m and 180 m respectively, increase the generation capacity of the individual authorised turbines, as well as undertake administrative amendments (the entire scope of the amendment request is detailed in the amendment report). None of amendments trigger new listed activities in terms of GNR 983, 984 and 985 of the EIA Regulations, 2014 (as amended). However, the proposed amendments will result in a change in scope of the valid EA. As such, a Regulation 31 Amendment Process in terms the EIA Regulations (GNR 982) of the EIA Regulations, 2014 as amended is applicable. The authorised Rietkloof WEF is a confirmed Round 5 Preferred Bidder project and is located within the Laingsburg Local Municipality in the Central Karoo District Municipality near Matjiesfontein in the Western Cape Province. The project is also

Building C
Knightsbridge, 33 Sloane Street
Bryanston, 2191
South Africa

T: +27 11 361 1392
F: +27 11 361 1381
wsp.com

situated within the Komsberg Renewable Energy Development Zone (REDZ) promulgated in GNR 114 of 2018, and includes the following properties:

- Portion 1 of Barendskraal 76
- The Remainder and Portion 3 of Fortuin 74
- The Remainder and Portion 1 of Hartjieskraal 77
- The Remainder of Nuwerus 284
- Portion 1 of Rietkloof Annexe 88
- The Remainder and Portion 1 of Snyders Kloof 80
- Vogelstruisfontein 81
- Remainder of Wilgehout Fontein 87
- Portion 1 of Ou Mure 74

EMPR AMENDMENTS

The EMPRs submitted as part of the Basic Assessment Reports (BARs) for the Rietkloof WEF and Reitkloof 132kV Powerline projects were not approved. In terms of Condition 13 and 16 of the authorised EAs 14/12/16/3/3/1/1977/AM1 and 14/12/16/3/3/1/1590 respectively, the EMPRs are to be amended to include measures dictated by the final layout maps, micro-siting and the provisions of the EAs. The amended EMPRs and Final Layouts are to be made available to interested and affected parties (I&APs) for comment.

REGISTRATION

WSP Group Africa (Pty) Ltd (WSP) has been appointed as the independent and suitably qualified Environmental Assessment Practitioner (EAP) by Rietkloof, to manage and undertake the Part 2 Amendment process and to amend the EMPRs. Parties wishing to formally register as interested and affected parties in order to receive more information and/ or raise their comment(s) on the project amendments, are requested to forward their full contact details to the EAP and disclose their direct business, financial, personal or other interest in the project. Any comments on the proposed project may be submitted to the EAP via the details provided below. Registered interested and affected parties will be forwarded all future project related correspondence.

DRAFT AMENDMENT REPORT AND EMPR REVIEW PERIOD

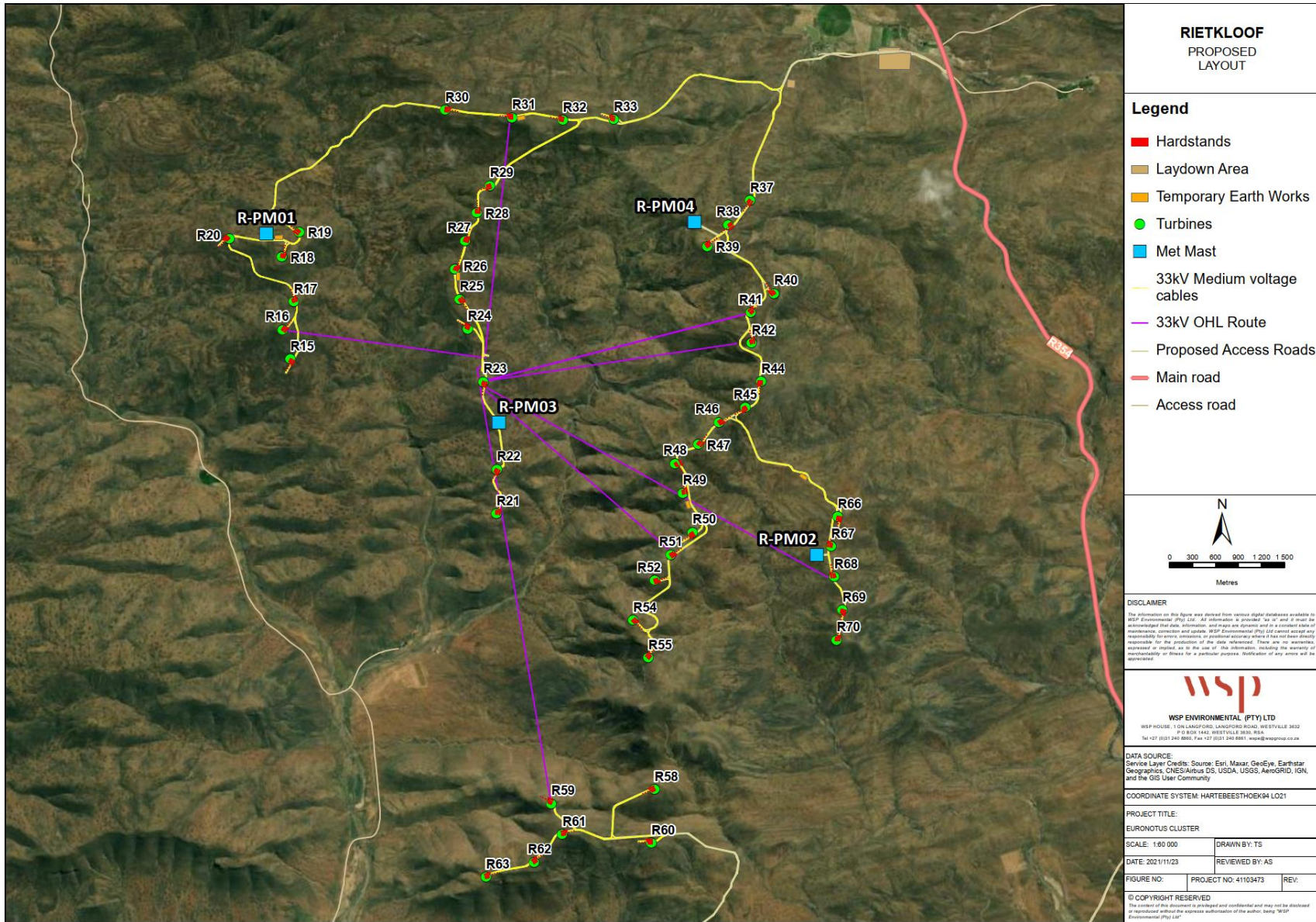
The Draft Amendment Report and amended EMPRs and Final Layouts are available from WSP on request and at the venues below for public review and comment for 30 days from 9 December 2021 to 31 January 2022:

- Matjiesfontein - Matjiesfontein Community Centre (Tel: 023 551 1019);
- Laingsburg - Laingsburg Library (Van Riebeeck street, Tel: 023 551 1019); and
- Website - <https://www.wsp.com/en-ZA/services/public-documents>

Kindly ensure that all comments on the proposed project or requests to be registered as an Interested and Affected Party are submitted to the contact details provided below, by 31 January 2022. Should you have any queries/comments, please do not hesitate to contact the EAP

The contact details of the EAP:

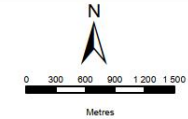
Babalwa Mqokeli (T) 031 240 8804 (F) 031 240 8801 (E) Babalwa.Mqokeli@wsp.com (A) PO Box 98867, Sloane Park, 2152



**RIETKLOOF
PROPOSED
LAYOUT**

Legend

- Hardstands
- Laydown Area
- Temporary Earth Works
- Turbines
- Met Mast
- 33kV Medium voltage cables
- 33kV OHL Route
- Proposed Access Roads
- Main road
- Access road



DISCLAIMER
 The information on this figure was derived from various digital databases available to WSP Environmental (PTY) Ltd. All information is provided 'as is' and it must be acknowledged that data, information, and maps are dynamic and in a constant state of maintenance, correction and update. WSP Environmental (PTY) Ltd cannot accept any responsibility for errors, omissions or positional inaccuracy unless it has not been directly responsible for the production of the data referenced. There are no warranties, expressed or implied, as to the use of the information, including the accuracy of reachability or fitness for a particular purpose. Notification of any errors will be appreciated.



WSP ENVIRONMENTAL (PTY) LTD
 WSP HOUSE, 1 ON LANGFORD, LANGFORD ROAD, WESTVILLE 3632
 P O BOX 1242, WESTVILLE 3635, RSA
 Tel: +27 (0)11 240 8800, Fax: +27 (0)11 240 8881, wsp@wspgroup.co.za

DATA SOURCE:
 Service Layer Credits: Source: Esri, Maxar, GeoEye, Earthstar
 Geographics, CNES/Airbus DS, USDA, USGS, AeroGRID, IGN,
 and the GIS User Community

COORDINATE SYSTEM: HARTBEESTHOEK#4 LO21

PROJECT TITLE:
 EURONOTUS CLUSTER

SCALE: 1:60 000 **DRAWN BY:** TS

DATE: 2021/11/23 **REVIEWED BY:** AS

FIGURE NO: **PROJECT NO:** 41103473 **REV:**

© COPYRIGHT RESERVED
 The content of this document is privileged and confidential and may not be disclosed or reproduced without the express authorization of the author, being WSP Environmental (PTY) Ltd.





Client ref.: 14/12/16/3/3/1/1977/AM1
WSP ref.: 41103473_RKP2

09 December 2021

Geagte Belanghebbende

Kennis word gegee ingevolge Regulasie 32 (GNR 982) van die Omgewingsimpakbepaling (OIB) Regulasies, 2014 soos gewysig gepubliseer kragtens artikel 24 en 24D van die Nasionale Omgewingsbestuurswet (No. 107 van 1998) (NEMA) (soos gewysig) vir die indiening van wysigings aansoeke ingevolge Regulasie 31.

Daarby word kennis gegee in terme van Voorwaarde 13 en 16 van die gemagtigde Omgewingsmagtigings (OM's) dat die Omgewingsbestuursprogram (OBP) vir die Rietkloof Windenergiefasiliteit (WEF) en die Rietkloof 132kV Kraglyn, onderskeidelik, gewysig is

DEEL 2 WYSIGINGSPROSES

In 2019 het die Departement van Omgewingsake (DEA) (nou bekend as die Departement van Bosbou, Visserye en die Omgewing – DFFE) 'n Omgewingsmagtiging (OM) uitgereik (Verw. No: 14/12/16/3/3/1/ 1977/AM1) vir die goedkeuring van die 183MW Rietkloof WEF r. Die voorstaander, Rietkloof Wind Farm (Edms) Bpk (Rietkloof), wil die bogenoemde OM wysig om wesenlike wysigings te onderneem bv. Verhoging van die naafhoogte en rotorsnee tot onderskeidelik 125 m en 180 m, vermeerdering van die opwekkingskapasiteit van die individuele gemagtigde turbines, asook administratiewe wysigings (die hele omvang van die wysigingsversoek word in die wysigingsverslag uiteengesit). Geen van die wysigings veroorsaak nuwe gelyste aktiwiteite ingevolge GNR 983, 984 en 985 van die OIB-regulasies, 2014 (soos gewysig) nie. Die voorgestelde wysigings sal egter lei tot 'n verandering in omvang van die geldige OM. Sodanig is 'n Regulasie 31-wysigingsproses ingevolge die OIB-regulasies (GNR 982) van die OIB-regulasies, 2014 soos gewysig van toepassing. Die gemagtigde Rietkloof WEF is 'n bevestigde Ronde 5 Voorkeurbieër-projek en is geleë binne die Laingsburg Plaaslike Munisipaliteit in die Sentraal Karoo Distriksmunisipaliteit naby Matjiesfontein in die Wes-Kaap Provinsie. Die projek is ook geleë binne die Komsberg Hernubare Energie-ontwikkelingsone (REDZ) wat in GNR 114 van 2018 afgekondig is, en sluit die volgende eiendomme in:

- Gedeelte 1 van Barendskraal 76
- Die Restant en Gedeelte 3 van Fortuin 74
- Die Restant en Gedeelte 1 van Hartjieskraal 77
- Die Restant van Nuwerus 284
- Gedeelte 1 van Rietkloof Annexe 88

Building C
Knightsbridge, 33 Sloane Street
Bryanston, 2191
South Africa

T: +27 11 361 1392
F: +27 11 361 1381
wsp.com

- Die Restant en Gedeelte 1 van Snyders Kloof 80
- Vogelstruisfontein 81
- Die Restant van Wilgehout Fontein 87
- Gedeelte 1 van Ou Mure 74

OBP WYSIGINGS

Die EBBP'e wat as deel van die Basiese Asseseringsverslae vir die Rietkloof WEF- en Reitkloof 132kV-kraglynprojekte ingedien is, is nie goedgekeur nie. Ingevolge voorwaarde 13 en 16 van die OM'e 14/12/16/3/3/1/1977/AM1 en 14/12/16/3/3/1/1590 onderskeidelik, moet die OBPs gewysig word om maatreëls in te sluit soos gedikteer in die finale uitlegkaart, mikro-sitplek en die bepalings van die OMs. Die gewysigde OBP'e en Finale uitlegte moet aan belanghebbende en geaffekteerde partye (B&GP's) beskikbaar gestel word vir kommentaar.

REGISTRASIE

WSP Group Africa (Edms) Bpk (WSP) is deur Rietkloof as die onafhanklike en toepaslik gekwalifiseerde Omgewingsbeoordelingspraktisyn (OBP) aangestel om die Deel 2 Wysigingsproses te bestuur en te onderneem en om die OBPs te wysig. Partye wat formeel as belanghebbende en geaffekteerde partye wil registreer om meer inligting te ontvang en/of hul kommentaar(s) op die projekwysigings te lewer, word versoek om hul volledige kontakbesonderhede aan die WHP te stuur en hul direkte besigheid, finansiële, persoonlike of ander belangstelling in die projek. Enige kommentaar oor die voorgestelde projek kan by die WHP ingedien word via die besonderhede hieronder verskaf. Geregistreeerde belangstellende en geaffekteerde partye sal alle toekomstige projekverwante korrespondensie aangestuur word.

KONSEP-WYSIGINGSVERSLAG EN OBP-OORSIGTYDPERK

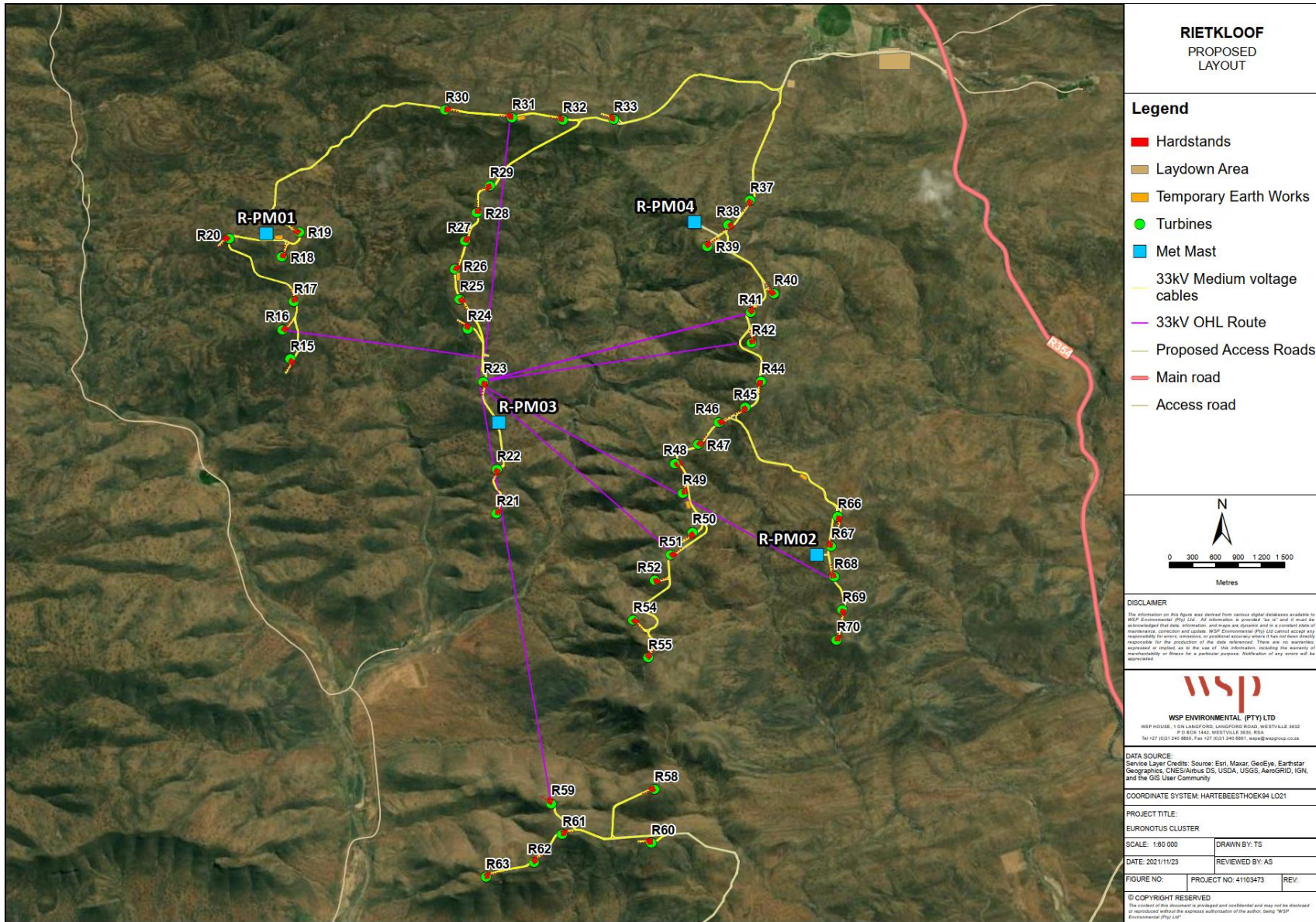
Die Konsepwysigingsverslag en gewysigde OBPs en Finale uitlegte is op aanvraag by WSP en by die lokale hieronder beskikbaar vir publieke hersiening en kommentaar vir 30 dae vanaf 9 Desember 2021 tot 31 Januarie 2022:

- Matjiesfontein - Matjiesfontein Gemeenskapsentrum (Tel: 023 551 1019);
- Laingsburg - Laingsburg Biblioteek (Van Riebeeckstraat, Tel: 023 551 1019); en
- Webwerf - <https://www.wsp.com/en-ZA/services/public-documents>

Maak asseblief seker dat alle kommentaar oor die voorgestelde projek of versoeke om geregistreer te word as 'n Belanghebbende en Geaffekteerde Party ingedien word by die kontakbesonderhede hieronder verskaf, teen 31 Januarie 2022. Indien u enige navrae/opmerkings het, moet asseblief nie huiwer om die OBP te kontak nie

Die kontakbesonderhede van die OBP:

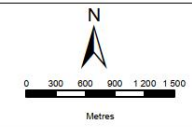
Babalwa Mqokeli (T) 031 240 8804 (F) 031 240 8801 (E) Babalwa.Mqokeli@wsp.com (A)
Posbus 98867, Sloane Park, 2152



**RIETKLOOF
PROPOSED
LAYOUT**

Legend

- Hardstands
- Laydown Area
- Temporary Earth Works
- Turbines
- Met Mast
- 33kV Medium voltage cables
- 33kV OHL Route
- Proposed Access Roads
- Main road
- Access road



DISCLAIMER
 The information on this figure was derived from various digital databases available to WSP Environmental (PTY) Ltd. All information is provided 'as is' and it must be acknowledged that data, information, and maps are dynamic and in a constant state of maintenance, correction and update. WSP Environmental (PTY) Ltd cannot accept any responsibility for errors, omissions or positional inaccuracy unless it has not been directly responsible for the production of the data referenced. There are no warranties, expressed or implied, as to the use of the information, including the accuracy of reachability or fitness for a particular purpose. Notification of any errors will be appreciated.



WSP ENVIRONMENTAL (PTY) LTD
 WSP HOUSE, 1 ON LANGFORD, LANGFORD ROAD, WESTVILLE 3632
 P O BOX 1242, WESTVILLE 3635, RSA
 Tel: +27 (0)11 240 8800, Fax: +27 (0)11 240 8881, wsp@wspgroup.co.za

DATA SOURCE:
 Service Layer Credits: Source: Esri, Maxar, GeoEye, Earthstar
 Geographics, CNES/Airbus DS, USDA, USGS, AeroGRID, IGN,
 and the GIS User Community

COORDINATE SYSTEM: HARTBEESTHOEK#4 LO21

PROJECT TITLE:
 EURONOTUS CLUSTER

SCALE: 1:60 000 **DRAWN BY:** TS

DATE: 2021/11/23 **REVIEWED BY:** AS

FIGURE NO: **PROJECT NO:** 41103473 **REV:**

© COPYRIGHT RESERVED
 The content of this document is privileged and confidential and may not be disclosed or reproduced without the express authorization of the author, being WSP Environmental (PTY) Ltd.

