

**SCREENING REPORT FOR AN ENVIRONMENTAL AUTHORIZATION OR
FOR A PART TWO AMENDMENT OF AN ENVIRONMENTAL AUTHORISATION
AS REQUIRED BY THE 2014 EIA REGULATIONS – PROPOSED SITE
ENVIRONMENTAL SENSITIVITY**

EIA Reference number: DEFF Ref: to be confirmed

Project name: 400MW Richards Bay Gas to Power plant, Phas 1F, Alton, Richards Bay

Project title: Transmission Infrastructure for the 400MW RBGP2 gas-to-power plant, Richards Bay, Kwazulu-Natal Province

Date screening report generated: 07/11/2020 21:15:23

Applicant: Richards Bay Gas Power 2 (Pty) Ltd

Compiler: Savannah Environmental (Pty) Ltd

Compiler signature:

.....

Table of Contents

- Proposed Project Location 3
 - Orientation map 1: General location 3
- Map of proposed site and relevant area(s) 4
 - Cadastral details of the proposed site 4
 - Wind and Solar developments with an approved Environmental Authorisation or applications under consideration within 30 km of the proposed area 5
 - Environmental Management Frameworks relevant to the application 5
- Environmental screening results and assessment outcomes 5
 - Relevant development incentives, restrictions, exclusions or prohibitions 6
- Map indicating proposed development footprint within applicable development incentive, restriction, exclusion or prohibition zones 6
 - Proposed Development Area Environmental Sensitivity 7
 - Specialist assessments identified 7
- Results of the environmental sensitivity of the proposed area 9
 - MAP OF RELATIVE AGRICULTURE THEME SENSITIVITY 9
 - MAP OF RELATIVE ANIMAL SPECIES THEME SENSITIVITY 10
 - MAP OF RELATIVE AQUATIC BIODIVERSITY THEME SENSITIVITY 11
 - MAP OF RELATIVE ARCHAEOLOGICAL AND CULTURAL HERITAGE THEME SENSITIVITY 12
 - MAP OF RELATIVE CIVIL AVIATION THEME SENSITIVITY 13
 - MAP OF RELATIVE DEFENCE THEME SENSITIVITY 14
 - MAP OF RELATIVE PLANT SPECIES THEME SENSITIVITY 15
 - MAP OF RELATIVE TERRESTRIAL BIODIVERSITY THEME SENSITIVITY 16

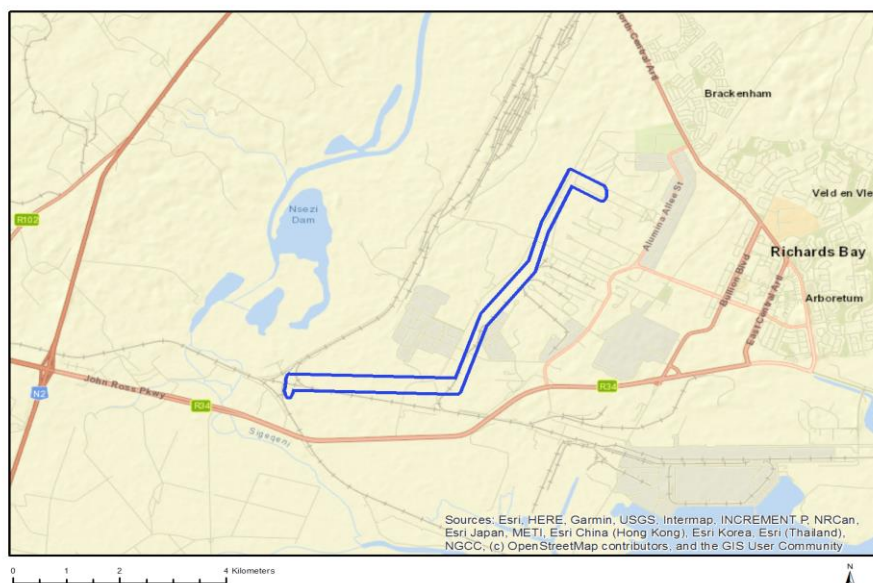
Proposed Project Location

Orientation map 1: General location

General Orientation: 400MW Richards Bay Gas to Power plant, Phas 1F, Alton, Richards Bay



Map of proposed site and relevant area(s)



Cadastral details of the proposed site

Property details:

No	Farm Name	Farm/ Erf No	Portion	Latitude	Longitude	Property Type
1	RICHARDS BAY	397	0	28°46'45.84S	32°3'53.35E	Erven
2	RICHARDS BAY	1814	0	28°45'51.14S	32°0'14.34E	Erven
3	RICHARDS BAY	1856	0	28°45'26.26S	32°0'32.97E	Erven
4	RICHARDS BAY	1819	0	28°45'39.11S	32°0'20.3E	Erven
5	RICHARDS BAY	1903	0	28°45'24.19S	32°1'2.57E	Erven
6	RICHARDS BAY	1858	0	28°45'20.65S	32°0'40.79E	Erven
7	RICHARDS BAY	1859	0	28°45'16.58S	32°0'44.81E	Erven
8	RICHARDS BAY	1819	2	28°45'37.63S	32°0'21.46E	Erven
9	RICHARDS BAY	1819	1	28°45'36.13S	32°0'23.43E	Erven
10	RICHARDS BAY	1860	0	28°45'11.63S	32°0'47.93E	Erven
11	RICHARDS BAY	5333	0	28°46'37S	31°59'15E	Erven
12	RICHARDS BAY	6724	1	28°45'34.06S	32°0'10.19E	Erven
13	RICHARDS BAY	1817	0	28°45'42.48S	32°0'16.58E	Erven
14	RICHARDS BAY	1855	0	28°45'32.09S	32°0'29.09E	Erven
15	RICHARDS BAY	1819	3	28°45'36.82S	32°0'22.41E	Erven
16	RICHARDS BAY	1902	0	28°45'39.18S	32°0'58.05E	Erven
17	RICHARDS BAY	9074	0	28°44'14.52S	32°1'11.58E	Erven
18	RICHARDS BAY	11376	2	28°46'11.62S	31°59'7.11E	Erven
19	RICHARDS BAY	8721	0	28°44'32.39S	32°1'42.27E	Erven
20	RICHARDS BAY	8817	0	28°44'20.02S	32°1'26.41E	Erven
21	RICHARDS BAY	16672	0	28°44'17.2S	32°1'18.44E	Erven
22	RICHARDS BAY	17455	0	28°44'24.1S	32°1'30.21E	Erven
23	RICHARDS BAY	17458	0	28°44'27.23S	32°1'44.51E	Erven
24	RICHARDS BAY	16786	0	28°44'7.11S	32°1'25.25E	Erven
25	RICHARDS BAY	17456	0	28°44'21.89S	32°1'25.25E	Erven
26	RICHARDS BAY	17457	0	28°44'21.71S	32°1'36.03E	Erven
27	RICHARDS BAY	11376	1	28°46'0.14S	31°58'46.21E	Erven
28	RICHARDS BAY	11376	3	28°46'19.44S	31°59'25.19E	Erven
29	RICHARDS BAY	15406	0	28°46'18.82S	31°59'29.29E	Erven
30	RICHARDS BAY	6720	0	28°45'46.51S	32°0'14.8E	Erven

31	RICHARDS BAY	11375	0	28°46'6.43S	31°58'58.99E	Erven
32	RICHARDS BAY	16670	0	28°44'35.27S	32°1'2.11E	Erven
33	RICHARDS BAY	16785	0	28°44'13.16S	32°1'11.63E	Erven
34	RICHARDS BAY	1818	0	28°45'40.35S	32°0'18.77E	Erven
35	RICHARDS BAY	1906	0	28°45'21.89S	32°0'36.63E	Erven
36	RICHARDS BAY	6724	6	28°46'12.87S	31°59'52.25E	Erven
37	RICHARDS BAY	6724	7	28°45'25.89S	31°59'51.61E	Erven
38	RICHARDS BAY	16671	0	28°44'34.61S	32°1'25.08E	Erven
39	RICHARDS BAY	8825	0	28°44'10.13S	32°1'18.92E	Erven
40	RICHARDS BAY	9033	0	28°44'21.97S	32°1'28.96E	Erven
41	RICHARDS BAY	15410	0	28°46'22.34S	31°59'38.9E	Erven
42	RICHARDS BAY	8818	0	28°44'22.75S	32°1'32.11E	Erven
43	RICHARDS BAY	11376	5	28°46'21.7S	31°58'56.75E	Erven
44	RICHARDS BAY	11376	4	28°46'3.91S	31°59'18.88E	Erven
45	RICHARDS BAY	16875	0	28°46'32.82S	32°0'3.97E	Erven
46	RICHARDS BAY	16876	0	28°46'18.83S	32°0'7.5E	Erven
47	RESERVE 6	15825	0	28°46'20.3S	32°0'13.98E	Farm
48	RESERVE 6	15825	65	28°45'58.33S	32°0'12.8E	Farm Portion
49	RESERVE 6	15825	12	28°44'30.59S	32°0'13.54E	Farm Portion
50	RESERVE 6	15825	0	28°46'22.12S	31°58'28.38E	Farm Portion
51	RESERVE 6	15825	1	28°45'24.12S	32°0'25.65E	Farm Portion
52	RESERVE 6	15825	51	28°44'46.69S	32°0'47.74E	Farm Portion
53	RESERVE 6	15825	70	28°46'1.13S	32°0'12.33E	Farm Portion
54	RESERVE 6	15825	66	28°46'6.9S	32°0'13.29E	Farm Portion
55	RESERVE 6	15825	0	28°44'10.51S	32°2'28.85E	Farm Portion

Development footprint¹ vertices:
No development footprint(s) specified.

Wind and Solar developments with an approved Environmental Authorisation or applications under consideration within 30 km of the proposed area

No nearby wind or solar developments found.

Environmental Management Frameworks relevant to the application

No intersections with EMF areas found.

Environmental screening results and assessment outcomes

The following sections contain a summary of any development incentives, restrictions, exclusions or prohibitions that apply to the proposed development site as well as the most environmental sensitive features on the site based on the site sensitivity screening results for the application classification that was selected. The application classification selected for this report is: Any activities within or close to a watercourse | Any activities within or close to a watercourse.

¹ “development footprint”, means the area within the site on which the development will take place and includes all ancillary developments for example roads, power lines, boundary walls, paving etc. which require vegetation clearance or which will be disturbed and for which the application has been submitted.

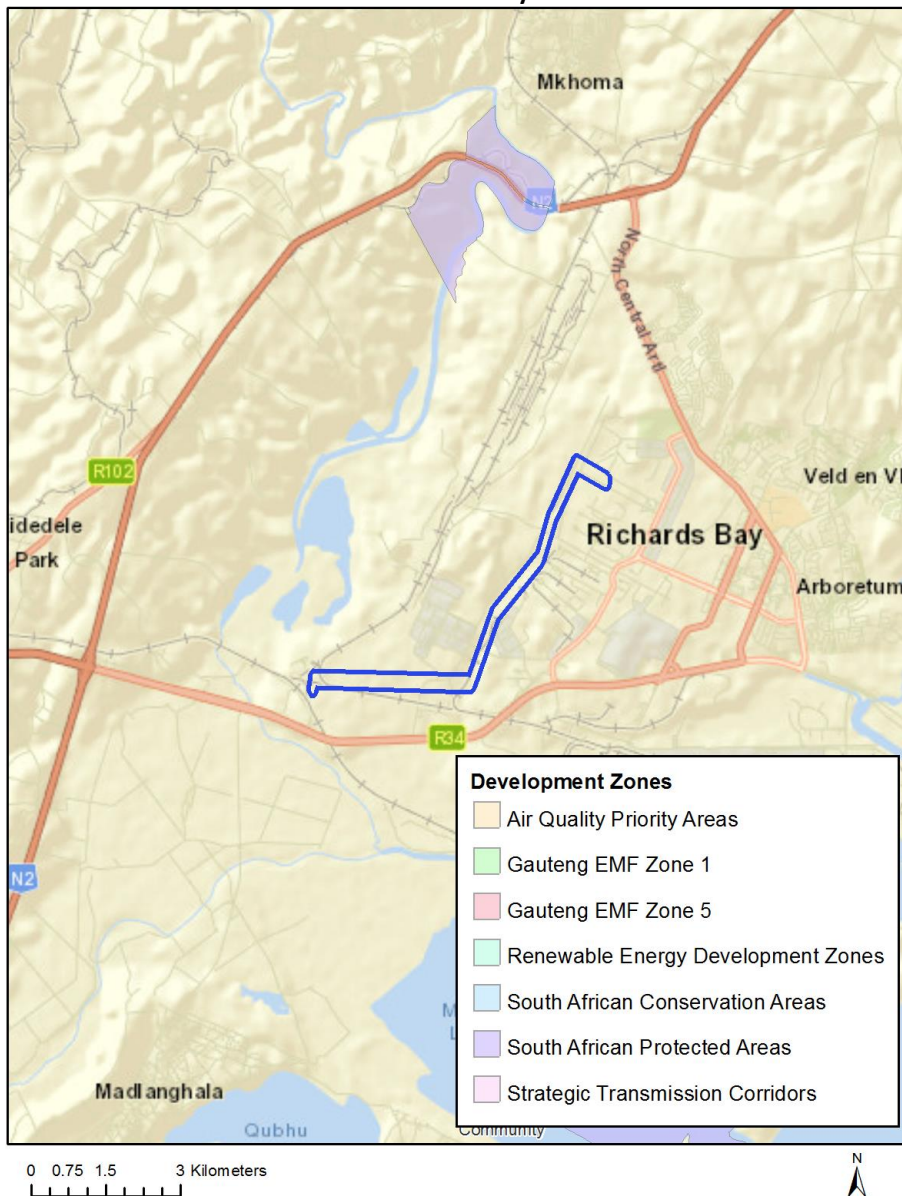
Relevant development incentives, restrictions, exclusions or prohibitions

The following development incentives, restrictions, exclusions or prohibitions and their implications that apply to this site are indicated below.

No intersection with any development zones found.

Map indicating proposed development footprint within applicable development incentive, restriction, exclusion or prohibition zones

Project Location: 400MW Richards Bay Gas to Power plant, Phas 1F, Alton, Richards Bay



Proposed Development Area Environmental Sensitivity

The following summary of the development site environmental sensitivities is identified. Only the highest environmental sensitivity is indicated. The footprint environmental sensitivities for the proposed development footprint as identified, are indicative only and must be verified on site by a suitably qualified person before the specialist assessments identified below can be confirmed.

Theme	Very High sensitivity	High sensitivity	Medium sensitivity	Low sensitivity
Agriculture Theme	X			
Animal Species Theme		X		
Aquatic Biodiversity Theme	X			
Archaeological and Cultural Heritage Theme			X	
Civil Aviation Theme		X		
Defence Theme				X
Plant Species Theme			X	
Terrestrial Biodiversity Theme	X			

Specialist assessments identified

Based on the selected classification, and the environmental sensitivities of the proposed development footprint, the following list of specialist assessments have been identified for inclusion in the assessment report. It is the responsibility of the EAP to confirm this list and to motivate in the assessment report, the reason for not including any of the identified specialist study including the provision of photographic evidence of the site situation.

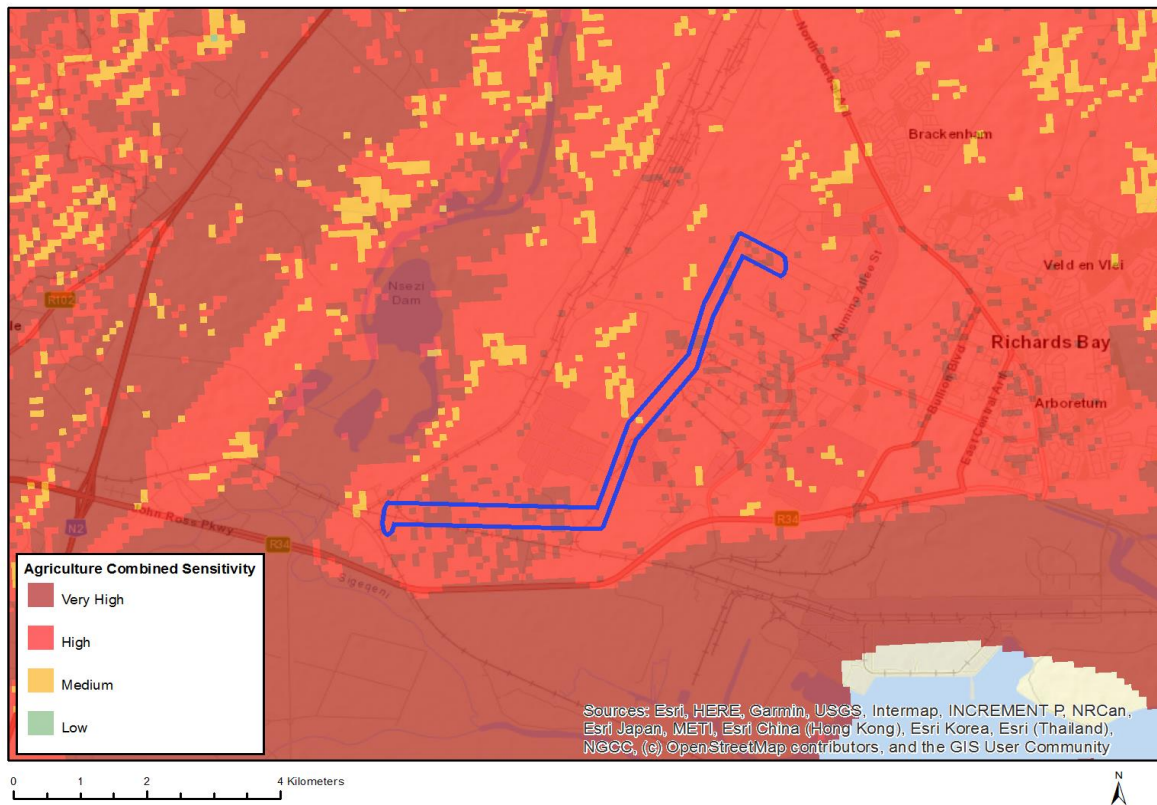
N o	Special ist assess ment	Assessment Protocol
1	Landscape/Visual Impact Assessment	https://screening.environment.gov.za/ScreeningDownloads/AssessmentProtocols/Gazetted_General_Requirement_Assessment_Protocols.pdf
2	Archaeological and Cultural Heritage Impact Assessment	https://screening.environment.gov.za/ScreeningDownloads/AssessmentProtocols/Gazetted_General_Requirement_Assessment_Protocols.pdf
3	Palaeontology Impact Assessment	https://screening.environment.gov.za/ScreeningDownloads/AssessmentProtocols/Gazetted_General_Requirement_Assessment_Protocols.pdf
4	Terrestrial Biodiversity Impact Assessment	https://screening.environment.gov.za/ScreeningDownloads/AssessmentProtocols/Gazetted_Terrestrial_Biodiversity_Assessment_Protocols.pdf

5	Aquatic Biodiversity Impact Assessment	https://screening.environment.gov.za/ScreeningDownloads/AssessmentProtocols/Gazetted_Aquatic_Biodiversity_Assessment_Protocols.pdf
6	Hydrology Assessment	https://screening.environment.gov.za/ScreeningDownloads/AssessmentProtocols/Gazetted_General_Requirement_Assessment_Protocols.pdf
7	Socio-Economic Assessment	https://screening.environment.gov.za/ScreeningDownloads/AssessmentProtocols/Gazetted_General_Requirement_Assessment_Protocols.pdf
8	Plant Species Assessment	https://screening.environment.gov.za/ScreeningDownloads/AssessmentProtocols/Gazetted_Plant_Species_Assessment_Protocols.pdf
9	Animal Species Assessment	https://screening.environment.gov.za/ScreeningDownloads/AssessmentProtocols/Gazetted_Animal_Species_Assessment_Protocols.pdf

Results of the environmental sensitivity of the proposed area.

The following section represents the results of the screening for environmental sensitivity of the proposed site for relevant environmental themes associated with the project classification. It is the duty of the EAP to ensure that the environmental themes provided by the screening tool are comprehensive and complete for the project. Refer to the disclaimer.

MAP OF RELATIVE AGRICULTURE THEME SENSITIVITY

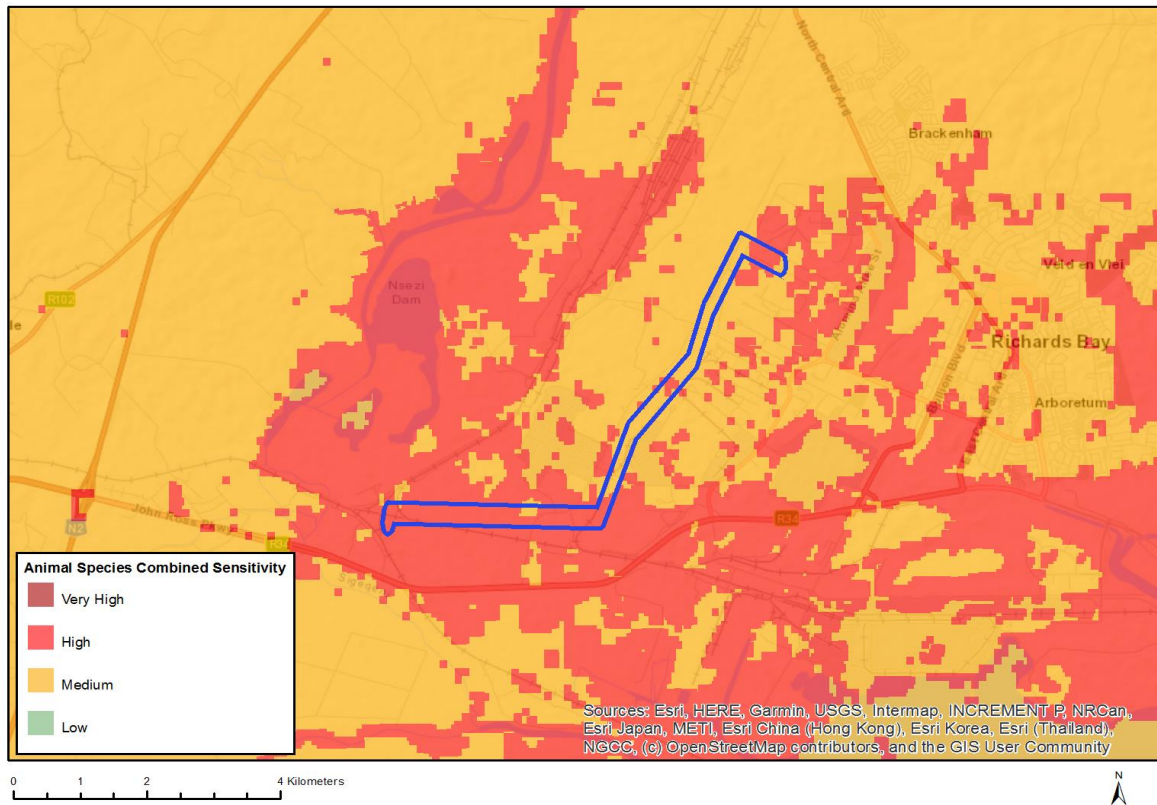


Very High sensitivity	High sensitivity	Medium sensitivity	Low sensitivity
X			

Sensitivity Features:

Sensitivity	Feature(s)
High	Land capability;09. Moderate-High/10. Moderate-High
Medium	Land capability;06. Low-Moderate/07. Low-Moderate/08. Moderate
Very High	Land capability;11. High/12. High-Very high/13. High-Very high/14. Very high/15. Very high

MAP OF RELATIVE ANIMAL SPECIES THEME SENSITIVITY

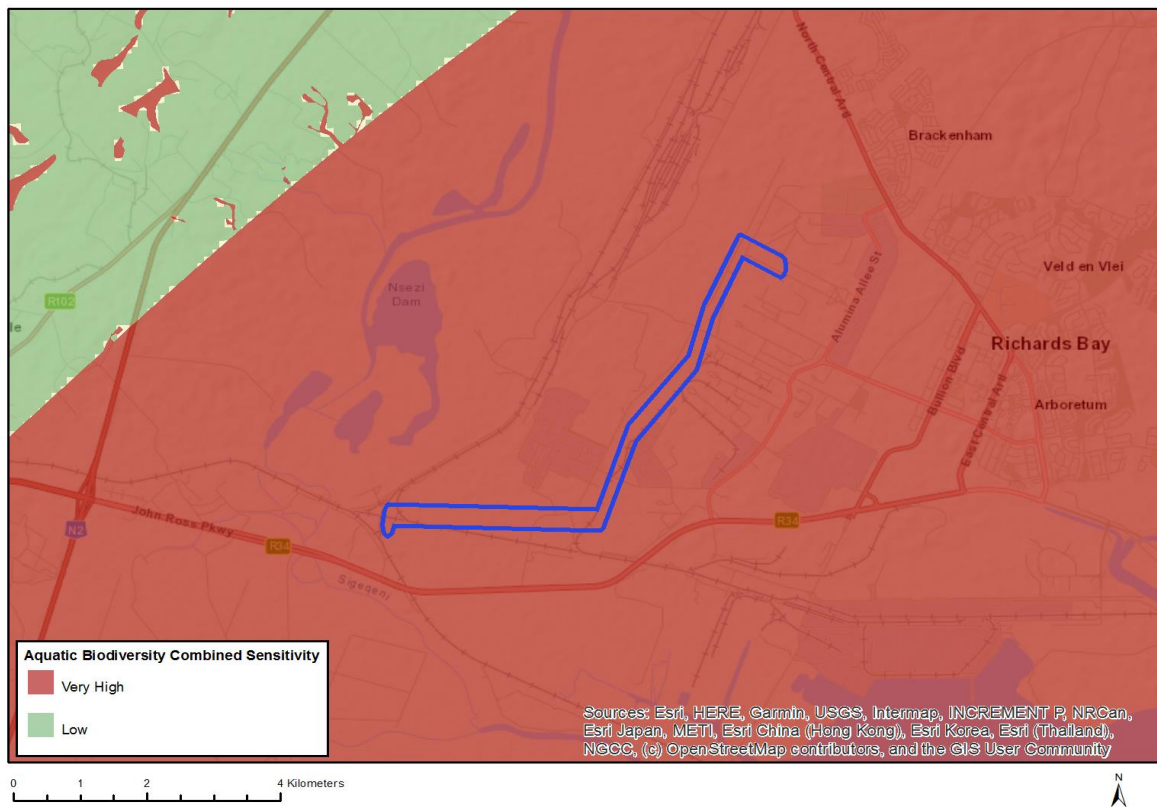


Very High sensitivity	High sensitivity	Medium sensitivity	Low sensitivity
	X		

Sensitivity Features:

Sensitivity	Feature(s)
High	Aves-Circus ranivorus
High	Sensitive species 9
High	Aves-Halcyon senegaloides
High	Aves-Geokichla guttata
High	Aves-Circaetus fasciolatus
High	Aves-Nettapus auritus
Medium	Invertebrate-Forest invertebrate
Medium	Invertebrate-Pomatonota dregii
Medium	Reptilia-Pelusios rhodesianus
Medium	Sensitive species 2
Medium	Insecta-Teriomima zuluana
Medium	Sensitive species 5
Medium	Invertebrate-Arytropteris basalis
Medium	Amphibia-Hyperolius pickersgilli
Medium	Aves-Circaetus fasciolatus
Medium	Sensitive species 9
Medium	Aves-Geokichla guttata
Medium	Aves-Halcyon senegaloides

MAP OF RELATIVE AQUATIC BIODIVERSITY THEME SENSITIVITY

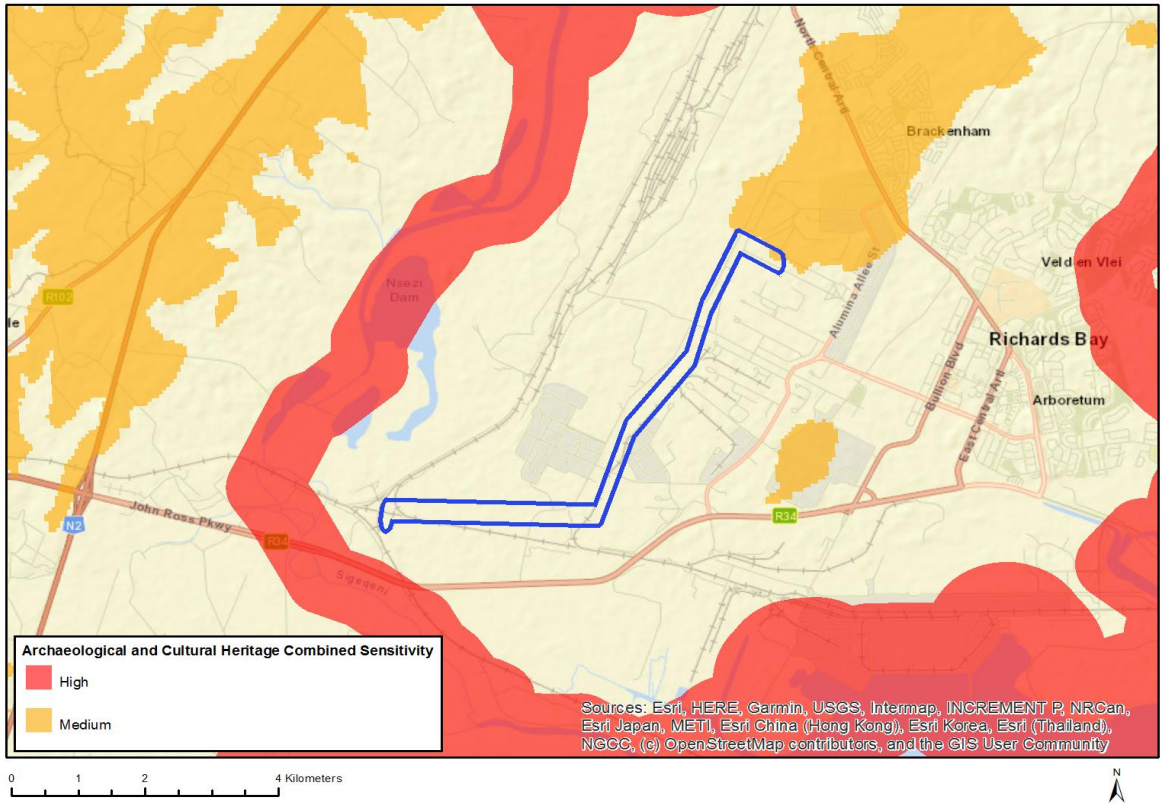


Very High sensitivity	High sensitivity	Medium sensitivity	Low sensitivity
X			

Sensitivity Features:

Sensitivity	Feature(s)
Very High	Strategic water source area
Very High	Wetlands and Estuaries

MAP OF RELATIVE ARCHAEOLOGICAL AND CULTURAL HERITAGE THEME SENSITIVITY

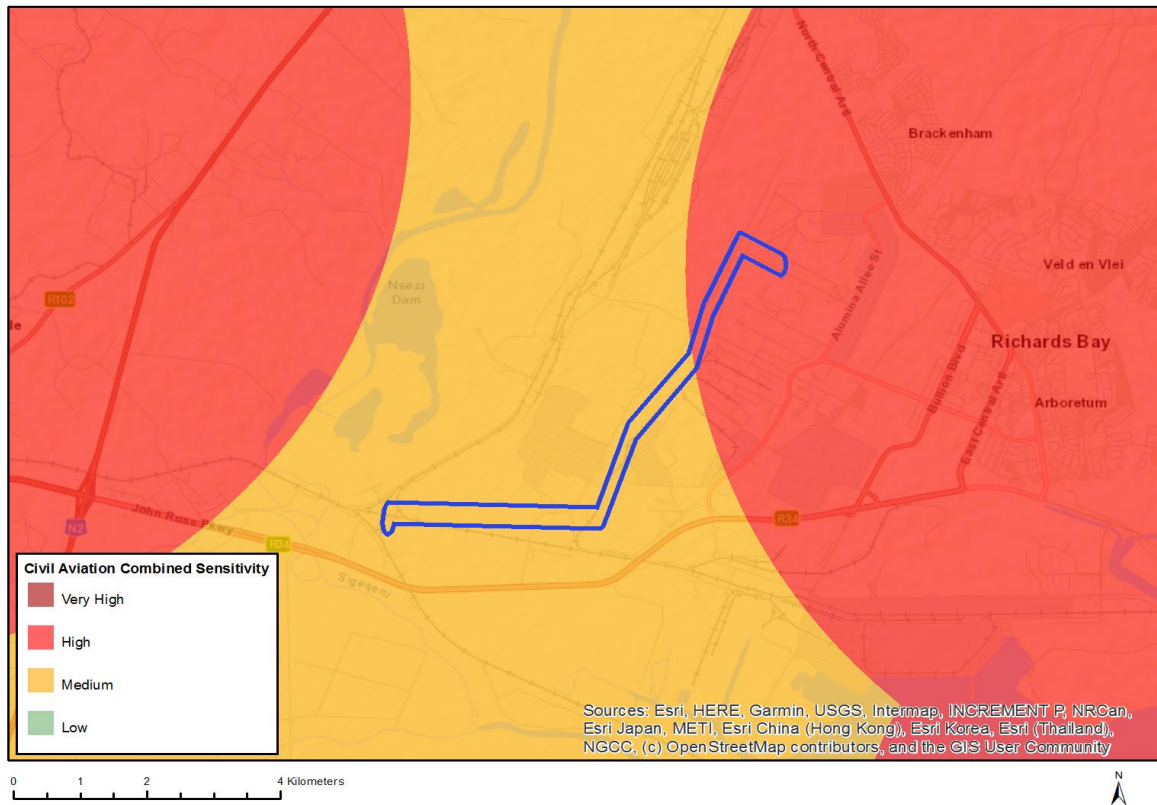


Very High sensitivity	High sensitivity	Medium sensitivity	Low sensitivity
		X	

Sensitivity Features:

Sensitivity	Feature(s)
Medium	Mountain or ridge

MAP OF RELATIVE CIVIL AVIATION THEME SENSITIVITY

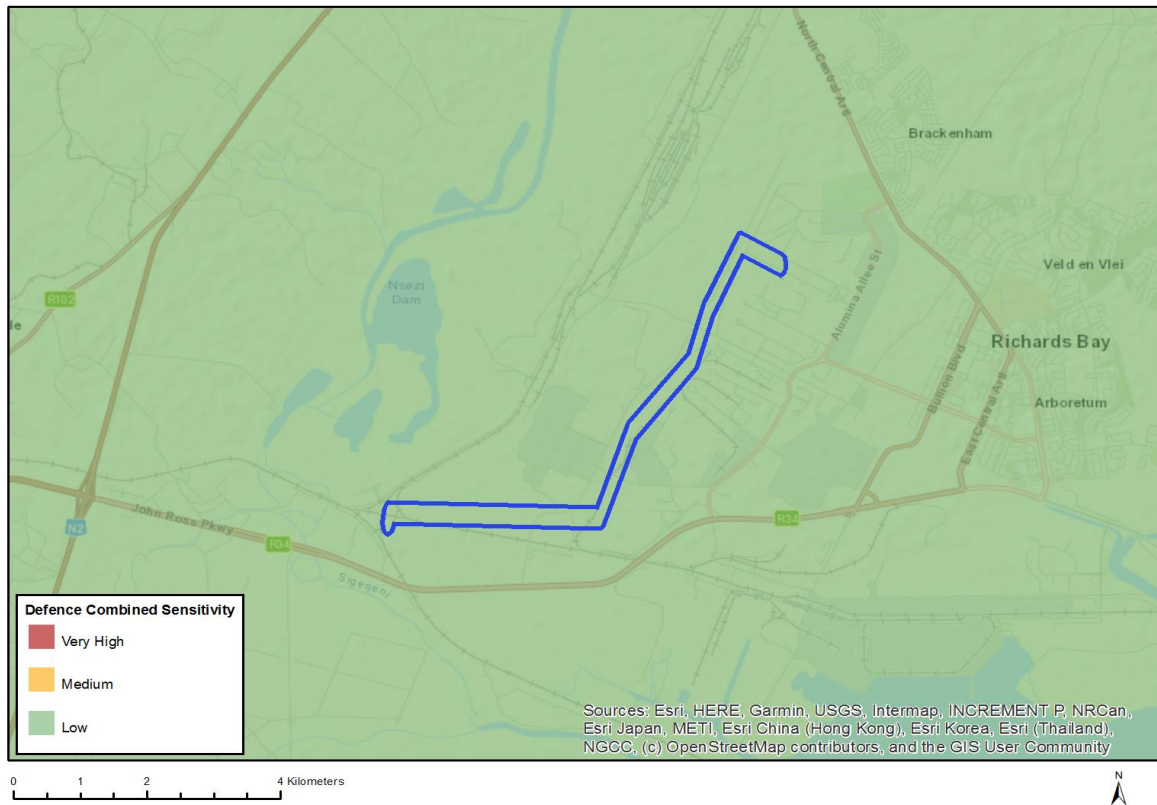


Very High sensitivity	High sensitivity	Medium sensitivity	Low sensitivity
	X		

Sensitivity Features:

Sensitivity	Feature(s)
High	Within 8 km of other civil aviation aerodrome
Medium	Between 8 and 15 km of other civil aviation aerodrome

MAP OF RELATIVE DEFENCE THEME SENSITIVITY

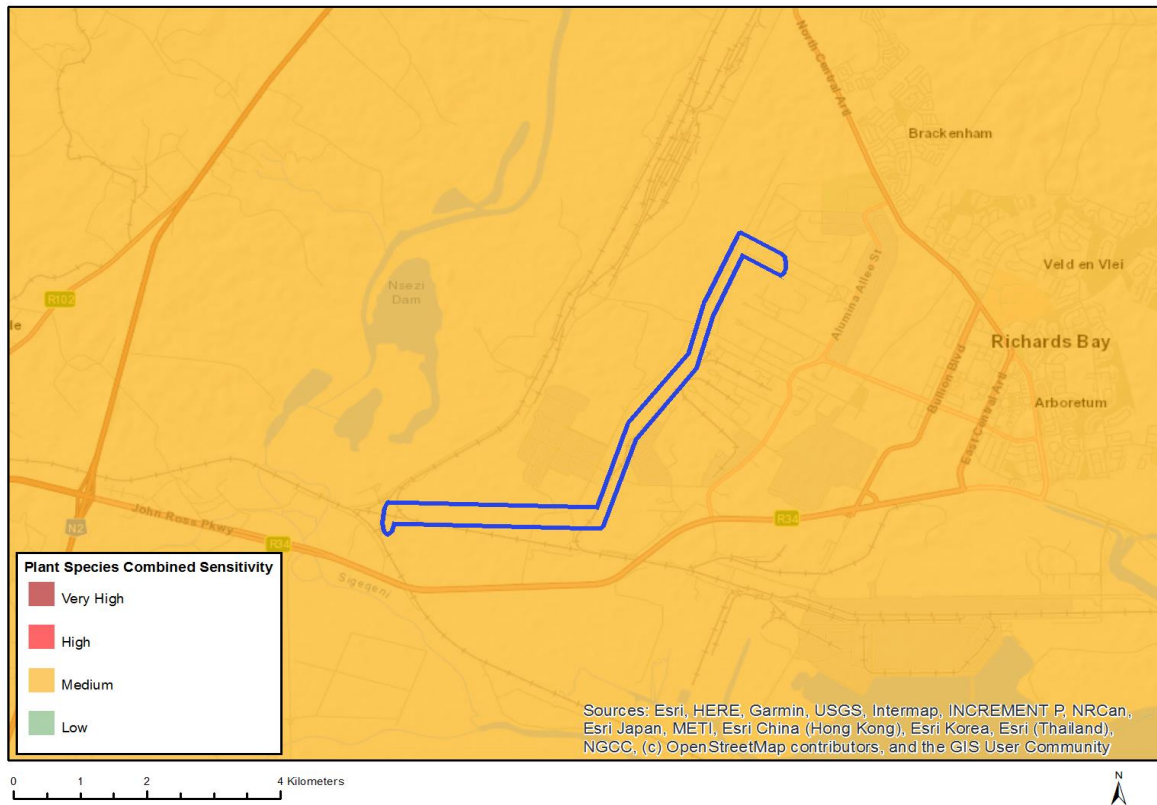


Very High sensitivity	High sensitivity	Medium sensitivity	Low sensitivity
			X

Sensitivity Features:

Sensitivity	Feature(s)
Low	Low sensitivity

MAP OF RELATIVE PLANT SPECIES THEME SENSITIVITY

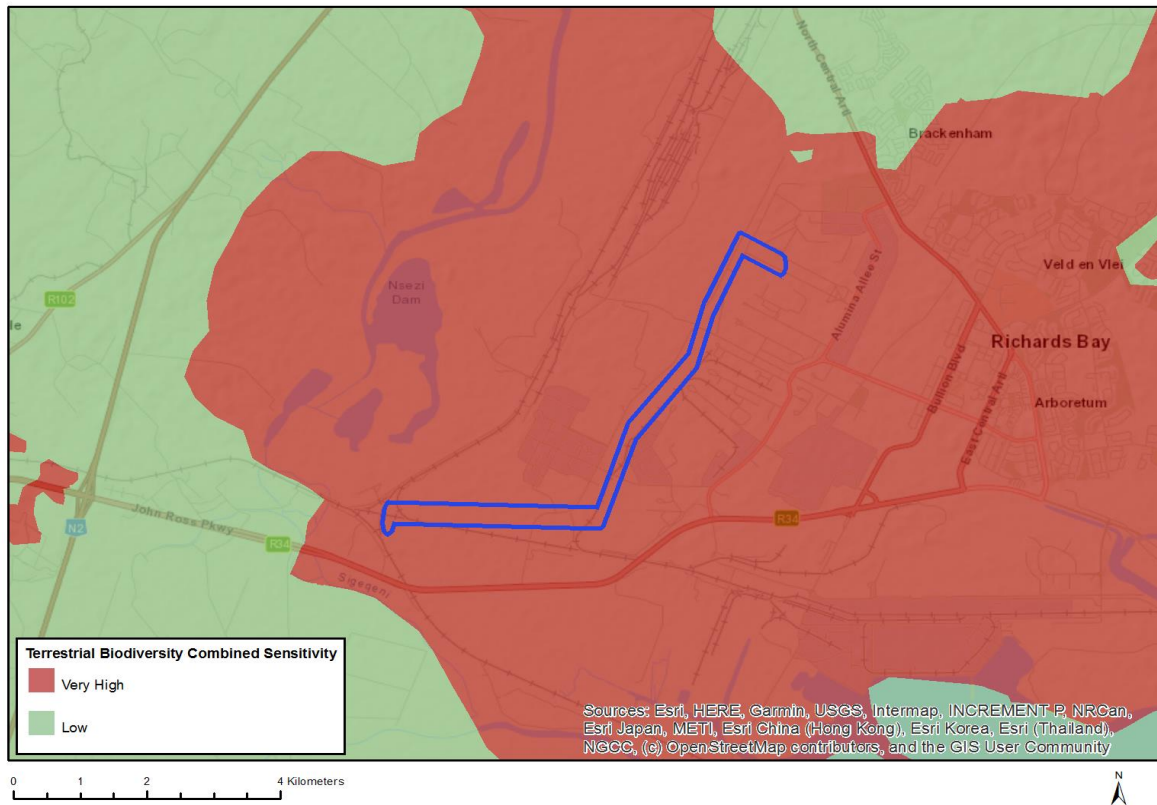


Very High sensitivity	High sensitivity	Medium sensitivity	Low sensitivity
		X	

Sensitivity Features:

Sensitivity	Feature(s)
Medium	<i>Freesia laxa</i> subsp. <i>azurea</i>
Medium	Sensitive species 275
Medium	<i>Oxygonum dregeanum</i> subsp. <i>streyi</i>
Medium	<i>Pachycarpus concolor</i> subsp. <i>arenicola</i>
Medium	Sensitive species 471
Medium	<i>Nidorella tongensis</i>
Medium	<i>Senecio ngoyanus</i>
Medium	<i>Aspalathus gerrardii</i>
Medium	<i>Wolffiella denticulata</i>
Medium	<i>Thesium polygaloides</i>

MAP OF RELATIVE TERRESTRIAL BIODIVERSITY THEME SENSITIVITY



Very High sensitivity	High sensitivity	Medium sensitivity	Low sensitivity
X			

Sensitivity Features:

Sensitivity	Feature(s)
Very High	Critical Biodiversity Area
Very High	Focus Areas for land-based protected areas expansion
Very High	Critically endangered ecosystem