

**PROJECT** WESTERN CAPE: CAPE TOWN:  
 ROBBER ISLAND MUSEUM;  
 MAXIMUM SECURITY PRISON.

REPAIRS, RENOVATIONS AND MINOR WORKS.

## YARD GATES SCHEDULE

WCS No. 021448  
 GPARCH REF No. 01/423  
 DOCUMENT No. 021448/C01

DATE REVISED 200X-XX-XX  
 DATE PRINTED 2002-12-06

**YARD GATES** TYPES YG01 to YG15

REVISIONS:		
REV. No.	DATE	DESCRIPTION:

W:\PROJECT\ROBNSLE\RI-MAXPRI\YARDGA-11YGCOV423.WPD

## GATE REPAIR SPECIFICATION

LOCATION	REFER TO SITE PLAN: DRAWING No. 021448/A01
FIXING CONDITIONS	Head: Lintel supporting 345mm thick brick wall with rough cast plaster to both sides. To be checked on site.
	Jams: 345mm thick brick wall with rough cast plaster to both sides
	Threshold: In-situ concrete ramping up
EXISTING FRAME	Overall size 850 x 2005mm frame made of 50 x 10mm galvanised mild steel bars to top and reveals fixed with lugs built into the reveal walls. Frame has a hole cut out for lock, a 3mm metal plate stopper welded on at lock height and three hinging sockets. FINISH: Painted
CONDITION OF FRAME	-Frame surface is completely covered with rust.
FRAME FINISH	<b>SURFACE PREPARATION:</b> -Remove all paint manually and/or using 'Plascon Stripclean Super Paint Stripper' or equal approved. -Wash with 'PlasconAquasolve Degreaser' or equal approved, to remove all traces of the paint stripper and any other residues. Rinse thoroughly with fresh water and allow to dry. -Remove rust completely to bright metal by sanding and/or using 'Plascon Rust Remover' or equal approved. -Use 'Plascon Rusist Rust Converter' or equal approved, copiously to rusted areas that can not be reached.  <b>PRIMER:</b> two coats 'Plascon Zinc Phosphate Primer' or equal approved. <b>FINAL COAT:</b> three coats 'Plascon Velvagio Gloss' or equal approved. Colour: to be worked out by specialist to match existing to architect's approval.
FRAME REPAIRS	
EXISTING GATE	Overall size 820 x 1985mm gate made of 50 x 10mm galvanised mild steel bar top rail, side rails, bottom rail, three 50 x 10mm galvanised mild steel bar horizontal intermediate rails at equal centres, five 20mm diameter solid vertical bars at equal centres, and 3mm thick metal sheet backing welded flash to one side. Gate has three hinging sockets. FINISH: Painted
CONDITION OF GATE	Gate completely fallen off the frame. -3x hinging sockets on gate broken off -Fairly rusted.
GATE FINISH	<b>SURFACE PREPARATION:</b> -Similar to preparation to frame outlined above.  <b>PRIMER:</b> two coats 'Plascon Zinc Phosphate Primer' or equal approved. <b>FINAL COAT:</b> three coats 'Plascon Velvagio Gloss' or equal approved. Colour: to be worked out by specialist to match existing to architect's approval.
GATE REPAIRS	-3x new hinging sockets to be welded onto gate -Gate to be lifted and fitted back into position.
IRONMONGERY	Hinge pin: Provide 3x new hinge pins.
	Handles: N/A
	Lockset: Intact. To be checked & serviced -Lock to be protected/removed during the works by specialist.
NOTES	- All dimensions and other information to be confirmed on site and any discrepancies reported to the Architect for verification and/or instruction. - Robben Island Museum Conservation Policy requirements to be adhered to. - All items taken apart or off their position to be carefully marked and recorded for reinstallatio./ restoration and/or replacement. Use of photographs may be necessary.
REVISIONS	2002-10-08 REV A: Finishes specifications

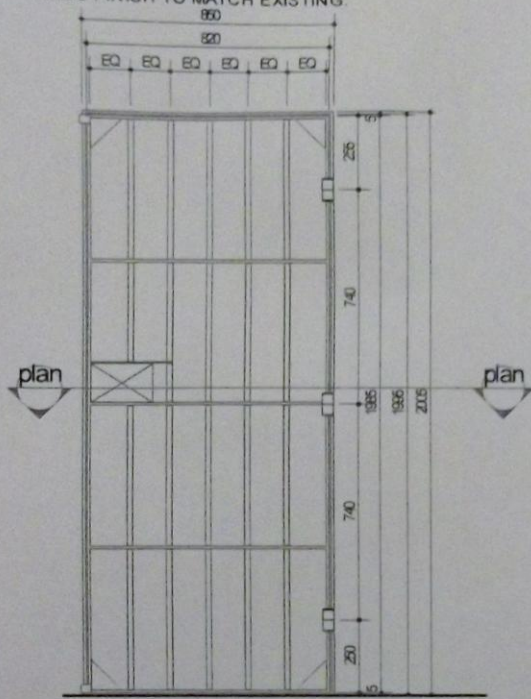
### YARD GATES SCHEDULE

PROJECT <b>ROBBED ISLAND MUSEUM: MAXIMUM SECURITY PRISON: MINOR WORKS, REPAIRS &amp; RENOVATIONS</b>	WCS No.	021448	DOC. No.	C01-01.1
	GPA REF:	01/423	REV No.	A
GROENEWALD PRELLER ARCHITECTS CC E-MAIL: gparch@new.co.za Tel (021) 423 5915 Fax (021) 423 5949	DATE	2002-10-08	GATE No.	<b>YG01</b>
	HAND	RH		

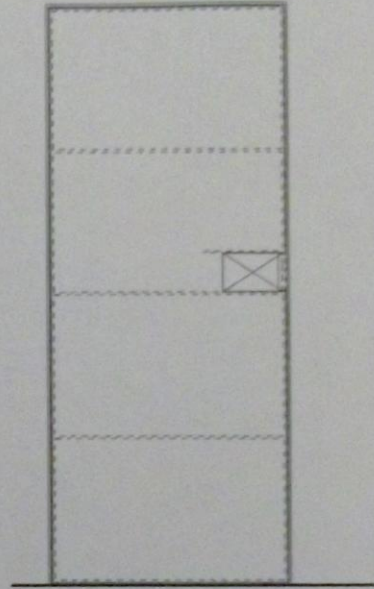
W:\PROJECT\ROBBISLE\RI-MAXPR\YARDGA-1\YG01-423.WPD

GENERAL DESCRIPTION OF WORK:  
 -REPAIR EXISTING GATE.  
 -FIT BACK INTO FRAME.  
 -REDO FINISH TO MATCH EXISTING.

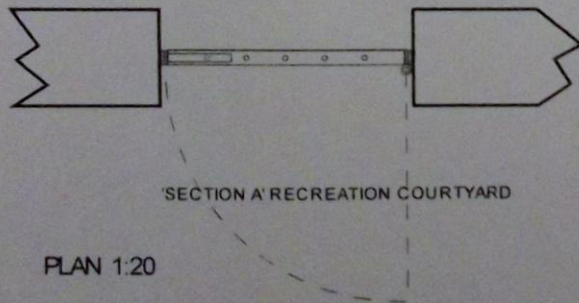
GATE YG01



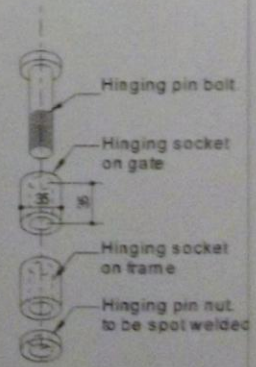
ELEVATION 1:20  
 'SECTION A' YARD



ELEVATION 1:20  
 VIEWED FROM  
 OUTSIDE THE PRISON


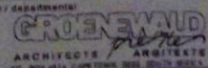


PLAN 1:20



HINGE ASSEMBLY  
 DIAGRAM 1:5

JTE  
 ALL DIMENSIONS TO BE CHECKED ON SITE AND ANY DISCREPANCIES  
 QUERIED WITH THE ARCHITECT BEFORE COMMENCING WITH THE WORK

 <p>DEPARTMENT OF PUBLIC WORKS Private Bag 385 Pretoria 0001 Tel: (012) 327 2000</p> <p>Director-General T.M. SIMU</p>	<p>DISCIPLINE: ARCHITECTURE</p> <p>PROJECT: WESTERN CAPE, CAPE TOWN, ROBBEN ISLAND MUSEUM MAXIMUM SECURITY PRISON -REPAIRS, RENOVATIONS AND MINOR WORKS</p> <p>CONSULTANT/DEPARTMENT:            ARCHITECTS ARCHITECTS          Tel: (021) 201 2111 / 201 2112 / 201 2113</p>	<p>WCS No: 021448</p> <p>SECURITY: YARD GATE DETAILS GATE YG01</p> <p>NO. OF PROFILES: 01/423</p> <p>SCALE: 1:20 DATE: 2002-08-25</p> <p>TYPE: GEN 063</p> <p>REVISIONS: NO. DATE: APPROVED BY: (initials) DATE: (initials)</p> <p>Copyright 2002 in the Department of Public Works</p>	<p>WCS No: 021448</p> <p>SECURITY: YARD GATE DETAILS GATE YG01</p> <p>NO. OF PROFILES: 01/423</p> <p>SCALE: 1:20 DATE: 2002-08-25</p> <p>TYPE: GEN 063</p> <p>REVISIONS: NO. DATE: APPROVED BY: (initials) DATE: (initials)</p> <p>Copyright 2002 in the Department of Public Works</p>
	<p>REVISIONS: NO. DATE: APPROVED BY: (initials) DATE: (initials)</p>	<p>WCS No: 021448</p> <p>SECURITY: YARD GATE DETAILS GATE YG01</p> <p>NO. OF PROFILES: 01/423</p> <p>SCALE: 1:20 DATE: 2002-08-25</p> <p>TYPE: GEN 063</p> <p>REVISIONS: NO. DATE: APPROVED BY: (initials) DATE: (initials)</p> <p>Copyright 2002 in the Department of Public Works</p>	

## GATE REPAIR SPECIFICATION

LOCATION	REFER TO SITE PLAN, DRAWING No. 021448/A01
FIXED CONNECTIONS	Head: Lintel supporting 230mm thick brick wall with rough cast plaster to both sides. To be checked on site.
	Jamba: 230mm thick brick wall with rough cast plaster to both sides.
	Threshold: In situ concrete ramping up
EXISTING FRAME	Overall size 880 x 2130mm frame made of 50 x 10mm galvanised mild steel bars to top, reveals and threshold, fixed with lugs built into the reveal walls. Frame has a hole cut out for lock, a 3mm metal plate stopper welded on at lock height and three hinging sockets. FINISH: Painted
CONDITION OF FRAME	-Frame completely rusted
FRAME FINISH	-Galvanised to SABS 1461- heavy industrial.
	-Face of frame that abuts to wall to be painted with bituminous paint before installation
	PRIMER: one coat Plascon Zinc Phosphate Primer or equal approved. FINAL COAT: two coat Plascon Velvaco Gloss or equal approved. Colour: to be worked out by specialist to match existing to architect's approval.
FRAME REPAIRS	-Remove frame and brickwork around it -Install new frame to match previous exactly and make good to brickwall around the opening. -Rough splatter plaster to face of wall in which gate is located, 1 metre to each side. -Face of frame that abuts to wall to be painted with bituminous paint before installation.
EXISTING GATE	Overall size 820 x 1985mm gate made of 50 x 10mm galvanised mild steel bar top rail, side rails, bottom rail, three 50 x 10mm galvanised mild steel bar horizontal intermediate rails at equal centres, five 20mm diameter solid vertical bars at equal centres, and four panels of 1mm thick metal sheet backing welded to the inside faces of the flatbars and fixed with brackets to vertical round bars. Gate has three hinging sockets. FINISH: Painted
CONDITION OF GATE	Gate completely rusted in open position.
GATE FINISH	-Galvanised to SABS 1461- heavy industrial.
	PRIMER: one coat Plascon Zinc Phosphate Primer or equal approved.
	FINAL COAT: two coat Plascon Velvaco Gloss or equal approved. Colour: to be worked out by specialist to match existing to architect's approval.
GATE REPAIRS	-Remove gate -Install new gate to match previous exactly
HARDWARE	Hinge pin: Provide 3x new hinge pins.
	Handles: N/A
	Lockset: To be obtained from the Department of Correctional Services
NOTES	- All dimensions and other information to be confirmed on site and any discrepancies reported to the Architect for verification and/or instruction. - Robben Island Museum Conservation Policy requirements to be adhered to. - All items taken apart or off their position to be carefully marked and recorded for reinstatement / restoration and/or replacement. Use of photographs may be necessary. - Removed gate remains the property of Robben Island Museum.
REVISIONS	2005-10-08 REV A. Final specifications

### YARD GATES SCHEDULE

PROJECT	ROBBEN ISLAND MUSEUM: MAXIMUM SECURITY PRISON: MAJOR WORKS, REPAIRS & RENOVATIONS	WCS No.	021448	DOC No.	CG1-08.1
		GFA REF.	01/423	REV No.	A
CONSULTANT	GREENWALD PRELLER ARCHITECTS CC 6 MAB, apent@oww.co.za Tel: (021) 423 5515 Fax: (021) 423 5548 17 WILSON STREET, ROSSBACH, 7800	DATE	2005-10-08	GATE No.	<b>YG05</b>
		HAND	GH		



## GATE REPAIR SPECIFICATION

LOCATION	REFER TO SITE PLAN: DRAWING No. 021448/A01
FIXING CONDITIONS	Head: Lintel supporting 230mm thick brick wall with rough cast plaster to both sides. To be checked on site. Jamb: 230mm thick brick wall with rough cast plaster to both sides. Threshold: In-situ concrete ramping up
EXISTING FRAME	Overall size 860 x 2040mm frame made of 50 x 10mm galvanised mild steel bars to top and reveals, fixed with lugs built into the reveal walls. Frame has a hole cut out for lock, a 3mm metal plate stopper welded on at lock height and three hinging sockets. FINISH: Painted
CONDITION OF FRAME	-Frame completely rusted.
FRAME FINISH	-Galvanised to SABS 1461- heavy industrial.  -Face of frame that abuts to wall to be painted with bituminous paint before installation PRIMER: one coat 'Plascon Zinc Phosphate Primer' or equal approved. FINAL COAT: two coat 'Plascon Velvagio Gloss' or equal approved. Colour: to be worked out by specialist to match existing to architect's approval.
FRAME REPAIRS	-Remove frame and brickwork around it. -Install new frame to match previous exactly and make good to brickwall around the opening. -Redo splatter plaster to face of wall in which gate is located, 1 metre to each side.
EXISTING GATE	Overall size 820 x 1985mm gate made of 50 x 10mm galvanised mild steel bar top rail, side rails, bottom rail, three 50 x 10mm galvanised mild steel bar horizontal intermediate rails at equal centres, five 20mm diameter solid vertical bars at equal centres, and four panels of 1mm thick metal sheet backing welded to the inside faces of the flatbars and fixed with brackets to vertical round bars. Gate has three hinging sockets. FINISH: Painted
CONDITION OF GATE	Gate is completely rusted in open position.
GATE FINISH	-Galvanised to SABS 1461- heavy industrial.  PRIMER: one coat 'Plascon Zinc Phosphate Primer' or equal approved. FINAL COAT: two coat 'Plascon Velvagio Gloss' or equal approved. Colour: to be worked out by specialist to match existing to architect's approval.
GATE REPAIRS	-Remove gate. -Install new gate to match previous one exactly.
IRONMONGERY	Hinge pin: Provide 3x new hinge pins. Handles: N/A Lockset: To be obtained from the Department of Correctional Services
NOTES	- All dimensions and other information to be confirmed on site and any discrepancies reported to the Architect for verification and/or instruction. - Robben Island Museum Conservation Policy requirements to be adhered to. - All items taken apart or off their position to be carefully marked and recorded for reinstallation / restoration and/or replacement. Use of photographs may be necessary. - Removed gate remains the property of Robben Island Museum.
REVISIONS	2002-10-08 REV A: Finishes specifications

### YARD GATES SCHEDULE

PROJECT	<b>ROBBED ISLAND MUSEUM: MAXIMUM SECURITY PRISON: MINOR WORKS, REPAIRS &amp; RENOVATIONS</b>	WCS No.	021448	DOC No.	C01-06.1
		GPA REF:	01/423	REV No.	A
GROENEWALD PRELLER ARCHITECTS CC E-MAIL: gparch@new.co.za Tel (021) 423 5915 Fax (021) 423 5949	DATE	2002-10-08		GATE No.	<b>YG06</b>
	HAND		RH		

W:\PROJECT\ROBNSLEIRI-MAXPRI\YARDGA~1\YG06-423.WPD

